

AREA 4 NEWSLETTER

WELCOME TO THE IESE NETWORK AREA 4 MONTHLY NEWSLETTER- EIGHTH ISSUE

Greetings and Happy Fall!

We want to express our gratitude for your hard work and dedication to the students, teachers, schools, and families in our area. We know how busy you must be this school year, and we appreciate all that you do. The Area 4 staff has been working hard. We are thrilled to provide you with high-quality professional development, coaching, mentoring, and resources to help stakeholders stay informed.

In our eighth edition, we are highlighting October as National Bullying Prevention Month. We have partnered with Family Matters and their Fall newsletter, which provides educators and parents with valuable resources on this issue. We have also included information about community resources and student-led IEPs, which we know are a common need among our teachers. Be sure to check out the FREE professional development opportunities we have scheduled and mark your calendars!

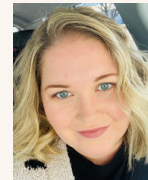
Remember, we are always here to serve your schools, leaders, teachers, students, and families, and our services are completely FREE! Thank you for your continued support and collaboration with the Area 4 IESE Network team. We look forward to another great year working alongside our districts.

IESE AREA 4 Staff



Melinda Miethe
Program Advisor
217-766-2603

mmiethe@iesenetwork.org



Ashton Powell
Regional Specialist
217-251-7683

apowell@iesenetwork.org

“WHATEVER YOU DO, DO IT WELL.”

– WALT DISNEY



IMPROVE.
CONNECT.
BUILD.



CONNECTING WITH THE COMMUNITY: RESOURCES AND LINKS

IT'S VITAL FOR CASE MANAGERS, PARENTS, SUPPORT SERVICES, AND SCHOOL PERSONNEL TO MAINTAIN CONTACT WITH LOCAL AND COMMUNITY RESOURCES FOR FAMILIES AND STUDENTS. WE'VE CREATED A TWO-PAGE DOCUMENT TO ASSIST YOU IN CONNECTING WITH OUTSIDE AGENCIES, UNIVERSITIES, COLLEGES, AND OTHER SUPPORT SERVICES FOR VARIOUS REQUIREMENTS. TAKE A LOOK AT THESE RESOURCES TO HELP YOU IN YOUR WORK. CLICK ABOVE ON THE GREEN LINK TO ACCESS THE DOCUMENT.

HOT TOPIC WITH TEACHERS

October: National Bullying Prevention Month

Did you know that one in five students report experiencing bullying? Bullying is defined as the repeated use of unwanted words or actions by someone with the power to intentionally hurt another individual, either physically or emotionally. Students often describe bullying as making them feel inferior as a person. The consequences of bullying can be far-reaching, potentially affecting school attendance, participation, and class engagement. Although different schools manage bullying in different ways, schools must have a well-thought-out plan that prioritizes students and families and provides necessary resources and follow-up.

Those who experience bullying are at an increased risk of developing depression, anxiety, sleep difficulties, lower academic achievement, and dropping out of school.

October is National Bullying Prevention Month, and we can all do our part to help prevent bullying.

Check out <https://www.pacer.org/bullying/info/> to learn more about how you can get involved and support bullying prevention.

ADULT SELF CARE

SELF-CARE IS NOT SYNONYMOUS WITH SELF-INDULGENCE OR BEING SELFISH.

SELF-CARE MEANS TAKING CARE OF YOURSELF SO THAT YOU CAN BE HEALTHY, YOU CAN BE WELL, YOU CAN DO YOUR JOB, YOU CAN HELP AND CARE FOR OTHERS, AND YOU CAN DO ALL THE THINGS YOU NEED TO AND WANT TO ACCOMPLISH IN A DAY.

RESEARCH SUGGESTS SELF-CARE PROMOTES POSITIVE HEALTH OUTCOMES, SUCH AS FOSTERING RESILIENCE, LIVING LONGER, AND BECOMING BETTER EQUIPPED TO MANAGE STRESS.

(EVERYDAY HEALTH)

**SELF CARE CAN BE TEMPORARY OR ENDURING
SELF CARE CAN BE PHYSICAL, MENTAL, SPIRITUAL
SELF CARE IS DIFFERENT FOR EVERYONE
CREATE YOUR OWN SELF CARE PLAN**



Collaborating with Parents

As a case manager, building a strong connection with parents is crucial. This year, wouldn't it be great to offer them more educational resources at your meetings? If so, take a look at Family Matters PTIC's website – our trusted partner organization. To get started, check out their September Newsletter.



CLASSROOM STRATEGY

Empowering Students with Disabilities through Student-Led IEPs

Student-led Individual Educational Plans (IEPs) offer a unique opportunity for students with disabilities to actively participate in their education planning process. By taking an active role, students are more likely to be engaged in their school experience and successfully achieve their goals. Here are some key areas to focus on during the IEP and/or transition planning process:

Student Led IEP Video

The Promise Act- ALL About Me Forms

Student Led IEP Script PowerPoint

Student Led IEP Resource Kit



Update on Area 4

Area 4 has been highly active since the start of the school year offering research-based professional development, coaching and mentoring services, and meeting with districts to discuss specific needs. Since August 2023, Area 4 has hosted 53 events, including professional development for district staff, coaching and mentoring for special education staff, and roundtable discussions aimed at tailoring plans to meet the unique needs of each district under our continuous improvement agreements this year.

Stay tuned for what's next in Area 4 for the month of November!


Want to stay in the loop? Subscribe to our monthly newsletter and receive updates by clicking [here](#) and adding your contact information.

Acknowledging Ms. Sandra Jones: A Remarkable Educator at Middlefork School


We would like to take a moment to celebrate Ms. Sandra Jones from the Vermilion Association for Special Education. Her passion for teaching junior high students is inspiring, and despite beginning her teaching career later in life, Ms. Jones has accomplished exceptional results. She works with some of the most challenging student behaviors and age groups while maintaining high expectations for academic success. Furthermore, she takes care of her students' social and emotional needs daily, making her an exceptional educator.

UPCOMING AREA 4 PD

- October 10th- Teaching students to manage behavior with de-escalation 3:30 - 4:30 pm [IESE Network's PDC Flyer and Register Here](#)
 - October 10th- What are HLPs / The Crosswalk Between HLPs and the Danielson Model (ADMIN)- Virtual ROE 39 Register [HERE](#)
 - October 11th- Effective Behavior Management and Data Collection for Paraeducators at ROE 39 in person Register to attend [HERE](#)
 - October 26th- Reading and Math Strategies
Area 4 Wide Virtual Communities of Practice Flyer [HERE](#)
- ROE 9 and 54 PD Offerings for 23-24 School year ~IESE has a section for PD offerings To access the digital version of the catalog and see a complete list of events with descriptions, dates, times, locations, PD hours earned, and links to register, [click here](#). It can also be found on the homepage of the website, [roeschoolworks.org](#), and it's attached to this email as a PDF. Please share this with any and all educators in Champaign, Ford, and Vermilion counties (and beyond).
- Check out the [IESE Network website](#) and social media platforms for specific upcoming events and trainings.



AREA 4
COMMUNITY OF PRACTICE (COP)




3:30PM - 4:30PM
Online via ZOOM
1.0 PDH Earned

Come learn, connect, and chat with other area Special Educators

September 14, 2023: Setting the Year Up for Success
October 26, 2023: Reading & Math Strategies
November 9, 2023: Inclusive Practices & Differentiation
December 7, 2023: Behavior Management & De-Escalation
January 11, 2024: Collaboration in the Classroom
February 15, 2024: High Leverage Practices
March 14, 2024: Restorative Practices
April 18, 2024: Adult Self-Care

[Register Here](#)





AREA 3
SPECIAL EDUCATORS LITERACY
MAKE AND TAKE

Friday, November 3rd
8:30AM-3:30PM
Capital Area Career Center (CACC)
2201 Toronto Road
Springfield, IL 62712
Cost: FREE!

Keynote by Dr. Ethan Lynn
*Includes materials to use for a great year in your classroom!
Dr. Ethan Lynn is an education specialist with years of experience as a teacher, administrator, and researcher of literacy. Currently, Dr. Lynn is a national presenter and consultant on the Science of Reading and Dyslexia. He is passionate about sharing the gift of literacy with all educators and students!
Afternoon breakout sessions will be based around the science of literacy for a variety of grade levels with an exciting presentation from the Illinois SLD Support Project. [slsupport.org](#)

**REGISTER**
[www.iesenetwork.org](#)



Illinois SLD Support Project

The SLDSP offers professional learning opportunities to teachers and school personnel to improve learning outcomes for students with specific learning disabilities.

Needs Assessment

We want to hear from YOU! We will be providing a survey and professional development opportunities to help you to better understand the needs of your students.



[Click HERE for more information.](#)



In-Person Events
Face-to-face workshops will be offered across the state including an annual conference.



Virtual Events
Webinars will be provided for educators, including a monthly webinar, a virtual conference, and a virtual summit.



On-Demand
Webinars will be recorded and made available for those unable to attend live. Micro-credentials will also be provided.



[Facebook](#)



[Instagram](#)



[Twitter](#)

Currently On-Demand

- Collaborative Teaching: Maximizing Student Learning Through Co-Teaching - 1 PDH
- Designing Accessible Assignments - 1 PDH
- Addressing Learning Loss in Students with Specific Learning Disabilities - 1 PDH
- Back to Basics: Strategies to Improve Writing in the Classroom - 1 PDH
- Middle School and Secondary Desk Supports - 1 PDH
- Desk Supports: Make the most of your Students' Work Area (Primary) - 1 PDH
- No Screener? No Problem! Foundational Literacy Skill Assessments for ALL Learners - 1 PDH
- Engaging Students with Google Tools - 1 PDH
- Google Classroom - Tips and Tricks - 1 PDH
- Google Slides - Creating Interactive Worksheets and Templates - 1 PDH

- What is SLD? RTI and Child Find Requirements in Illinois - 1 PDH
- The Evaluation Process and Eligibility - 1 PDH
- The Dyslexia Cases: Evaluation, Eligibility, and Methodology Issues - 1 PDH
- Turning SLD Evaluations into IEPs - 1 PDH
- Progress Monitoring, MTSS/RTI, and Re-Evaluations and Overcoming Five Myths About SLD - 1 PDH
- How to Create and Deliver Specialty Designed Instruction for the Inclusive Classroom Part 1 - 4 PDHs
- How to Create and Deliver Specialty Designed Instruction for the Inclusive Classroom Part 2 - 3.5 PDHs

- The Power of Pictures: Utilizing Images to Engage Students in Math (K-6) - 1 PDH
- Beyond the Textbook: Math Resources that Capture Students' Attention (K-6) - 1 PDH
- Making Number Sense Active (K-3) - 1 PDH
- The Power of Pictures: Utilizing Images to Engage Students in Math (6-8) - 1 PDH
- Where did the Numbers Go? (Numberless Word Problems) (6-8) - 1 PDH

- The Writing Rope: A Framework for Effective Writing Instruction - 1 PDH
- Instructional Suggestions to Support Sentence and Paragraph Writing (3-12) - 1 PDH
- Teaching Summarizing to Support Comprehension and Develop Writing Skills (4-12) - 1 PDH
- First Steps for Beginning Writing: Drawing, Labeling, Linking (K-1) - 1 PDH
- An Overview of the Components of Beginning Writing Instruction (K-2) - 1 PDH

- Introduction to Explicit Instruction in Learning Strategies for Adolescents with Learning Disabilities (Secondary) - 1 PDH
- Overview of Learning Strategies for Improved Academic Performance (Secondary) - 1 PDH
- Explicit Vocabulary Instruction: Word Specific and Generative Strategies to Support Vocabulary (Secondary) - 1 PDH
- Explicit Instruction in Learning Strategies to Promote Paraphrasing and Summarizing - 1 PDH
- Content Enhancement Using Explicit Instruction Principles to Teach Secondary Content - 1 PDH
- What is Dyslexia and How Does the Brain Learn to Read? - 1 PDH
- Dyslexia and a Structured Literacy Approach to Teaching Phonics (K-6) - 1 PDH
- Intervention Instruction for Struggling Students in (grades 4-9) - 1 PDH
- Teaching Comprehension Strategies (K-6) - 1 PDH
- Instructional Suggestions for Growing Students' Vocabulary (K-6) - 1 PDH
- What Administrators Need to Know about the Science of Reading - 3 PDHs
- Unraveling Dyslexia: Guidance for Teachers and Support Personnel to Improve Outcomes of Struggling Readers Part 1 - 2 PDHs
- Unraveling Dyslexia: Guidance for Teachers and Support Personnel to Improve Outcomes of Struggling Readers Part 2 - 2.75 PDHs

Illinois SLD Support Project



<https://www.facebook.com/illinoisldsupportproject>



<https://www.instagram.com/sldsproject>



<https://www.sldsproject.org/>

ABOUT THE PROJECT

The SLDSP offers professional learning opportunities on specially designed instruction for students with specific learning disabilities for diverse populations across all grade levels for educators and families in the following ways:

- Annual statewide conference
- Regional in-person and virtual workshops
- PD for schools identified as needing intensive support
- Monthly webinars
- Update the ISLL Dyslexia Handbook
- Develop a Dyslexia Toolkit



info@sldsproject.org



IL SLD SUPPORT PROJECT

TYPES OF PD



On-Demand

Workshops



Webinars



PD TOPICS



AUDIENCE
School personnel who support students with specific learning disabilities.

REGISTRATION



QUESTIONS?

Contact Robin Thoma at rtoma@sldsproject.org

PDHS

PDHs can be earned following the completion of each session.



SLD Project Professional Learning

Click Here

CONTINUING EDUCATIONAL OPPORTUNITIES

LBS-1

Learning Behavior Specialist
Special Education Endorsement



100% online, 15 credit hours

Can be applied towards a master's degree in Special Education



Taught by graduate faculty with K-12 classroom experience

Gain skills to teach students with disabilities in the general classroom

Interested in our program?
Scan this QR code to learn
how to apply!



MASTER OF SCIENCE IN SPECIAL ED



100% online, with multiple options for one year capstone experience

Focus on teacher leadership



Methods courses in both high and low incidence disabilities

Electives sequences specific to LBS II options



Interested in our program?
Scan this QR code to learn how to apply!

Want to attend a virtual info session?
Scan this QR code to sign up!



PULSE



Paraprofessionals Unlocking
Licensure in Special Education



100% online, 2-year program

\$1,500 scholarship & financial assistance available

Work while in the program



Earn a Bachelor's degree in Special Education and your Professional Educator's License



Wheeler Foundation

Funding Exceptional Dreams

There are FULL scholarship opportunities for those who reside in Area 4 and in the Wheeler Foundation reach. For more information Contact Derrick Drenckpohl at ddrenck@ilstu.edu

COMPLIMENTARY PROFESSIONAL DEVELOPMENT: MONTHLY COURSES

Build your educators' skills and invest in your organization at no cost to you by taking advantage of monthly, limited-release courses provided by GCU's Canyon Professional Development.

AUGUST COURSE

Lesson Planning: The Basics and Beyond (LDS-06)

Throughout this course, participants will reflect on the importance of consistently planning for instruction. They will identify the necessary components of a single-topic lesson plan and a weekly lesson plan. Participants will be prompted to examine the alignment of their lesson plans and how this can impact student success.

FOR MORE INFORMATION, CONTACT:

Kylie Collins
602-513-4336
Kylie.Collins@gcu.edu
<https://www.gcu.edu/counselor/kylie.collins/step-1/>

GRAND CANYON
UNIVERSITY

K12 EDUCATIONAL DEVELOPMENT

CANYON
PROFESSIONAL DEVELOPMENT

BY KYLE COLLINS



Grand Canyon University is accredited by the Higher Learning Commission (HLC) and is an institutional accreditation agency recognized by the U.S. Department of Education. Approved by the Assistant Vice President of GCU Marketing on Aug. 1, 2023. ©2023 Grand Canyon University. 2023-08-01