

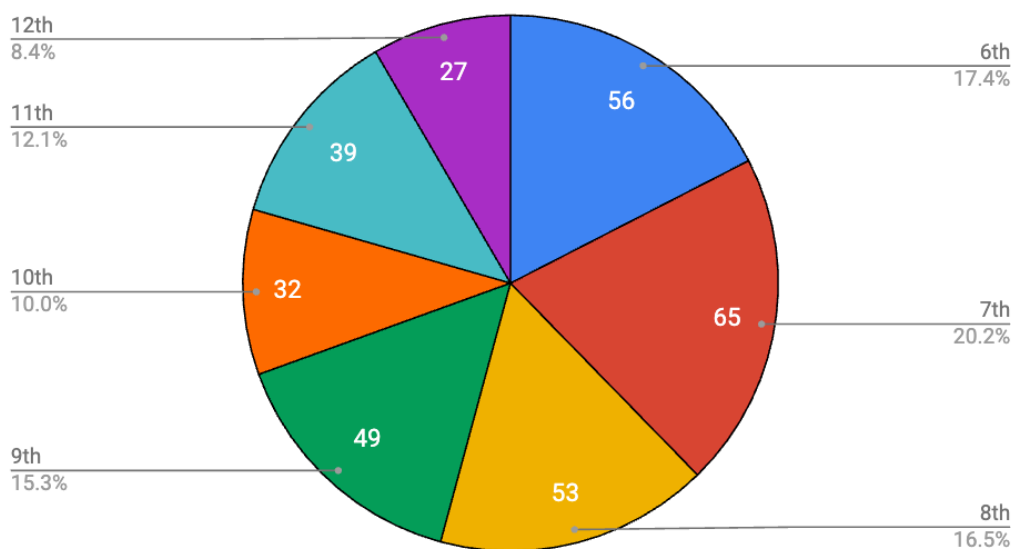


AUGUST 29, 2023

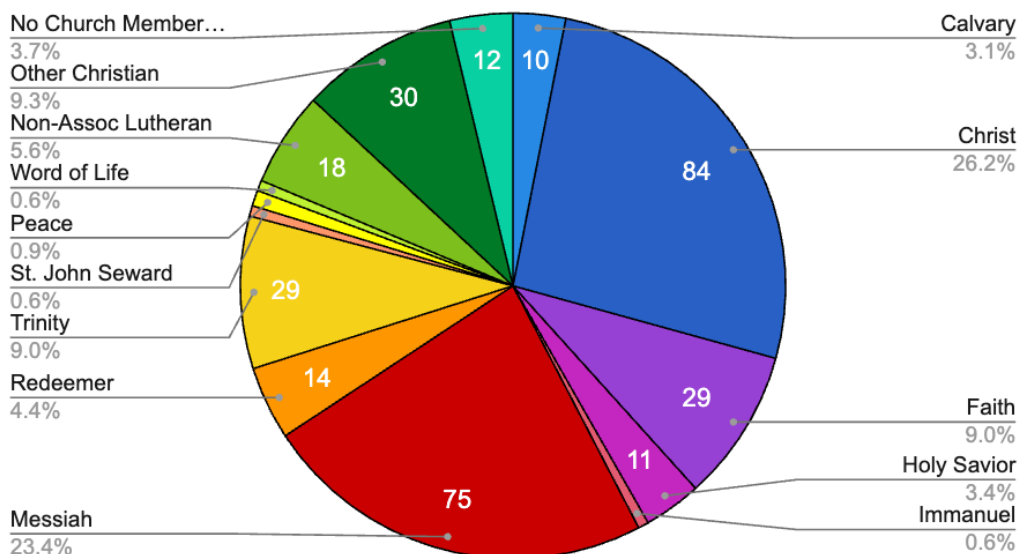
# LINCOLN LUTHERAN ANNUAL REPORT

## 2023-24 ENROLLMENT INFORMATION

### Total Number of Students = 321



### Church Membership of Lincoln Lutheran Students



## FACULTY FACTS

24

Teachers

5

Administrators

595

Total Years of Experience

20.5

Ave. Years of Experience

319

Total Years at LL

13

Ave. Years at LL

100%

Bachelor's Degree

72%

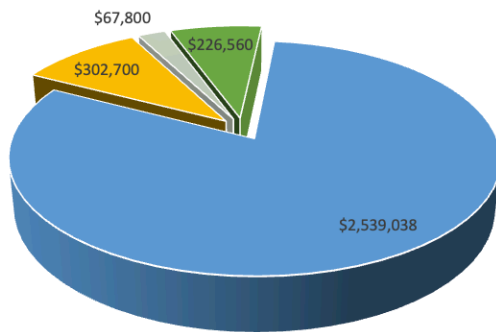
Master's Degree

11

Faculty who have ONLY taught at Lincoln Lutheran for a combined total of 152 years

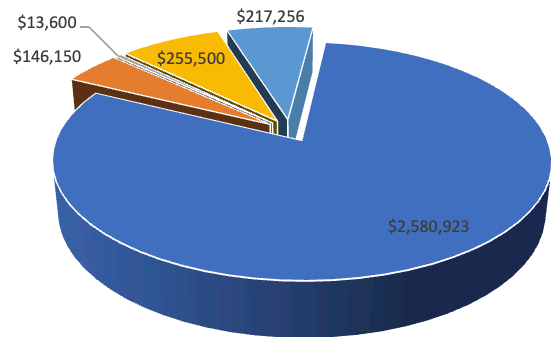
# 2022-23 FINANCIAL INFORMATION

## Budgeted Income



- Mission Support
- Tuition Income
- Development Income
- Other Income

## Budgeted Expense



- Payroll
- Professional and Instructional
- Prof. Development
- Operations
- Debt Service

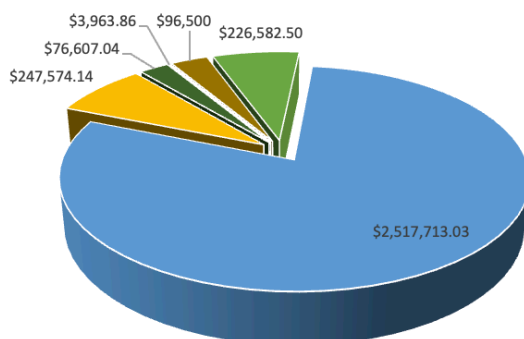
## 2022-23 BUDGET

**Income: \$3,136,098**

**Expense: \$3,127,315**

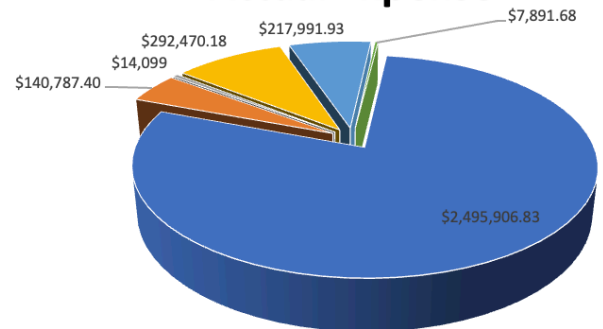
**Projected Difference: \$8,783**

## Actual Income



- Mission Support
- Tuition Income
- Development Income
- Other Income
- Out of Period Income
- Contingency Fund

## Actual Expense



- Payroll
- Professional and Instructional
- Prof. Development
- Operations
- Debt Service
- Out of Period Expense

## 2022-23 ACTUAL

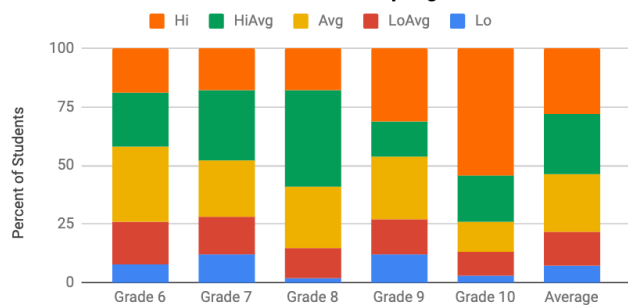
**Income: \$3,072,440.57**

**Expense: \$3,168,861.57**

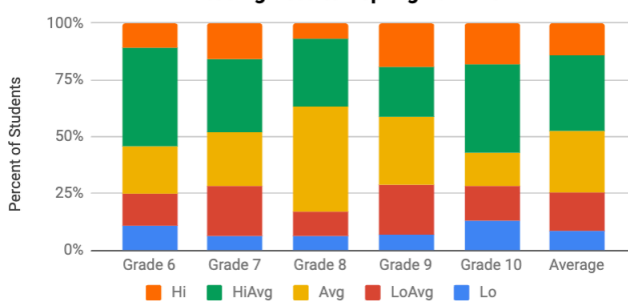
**Net Income: \$79**

*\* \$96,500 was utilized from the Contingency Fund to balance the budget.*

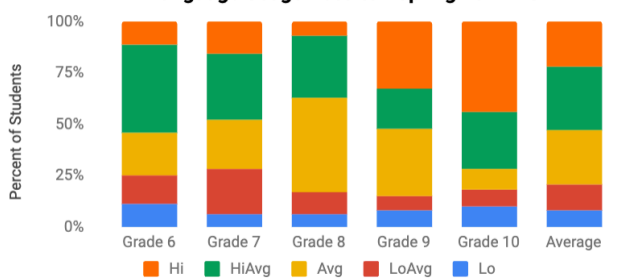
MAP Mathematics Results - Spring 22-23



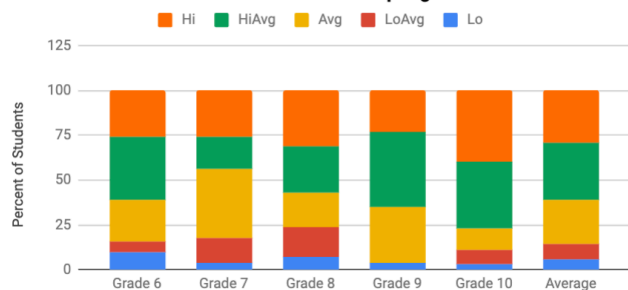
MAP Reading Results - Spring 2022-23



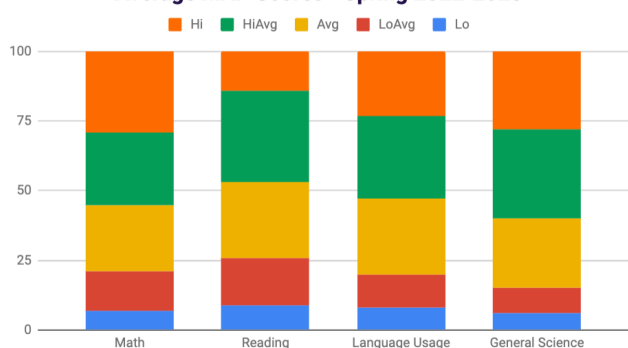
MAP Language Usage Results - Spring 2022-23



MAP Science Test Results - Spring 2022-23



Average MAP Scores - Spring 2022-23



## CLASS OF 2023

### POST-GRADUATION PLANS

### 56 GRADUATES

Bryan College of Health Sciences (1)  
 Buena Vista University (1)  
 Concordia University - Nebraska (3)  
 D'Youville University (1)  
 Davines Academy of Beauty (1)  
 Dordt University (1)  
 Grand Canyon University (1)  
 Morningside University (2)  
 Nebraska Wesleyan University (4)  
 Northwest Missouri St. University (2)  
 Northwestern College (1)  
 Southeast Community College (9)  
 St. Cloud State University (1)  
 United State Air Force (1)  
 University of Kansas (1)  
 University of Nebraska - Kearney (1)  
 University of Nebraska - Lincoln (19)  
 Wayne State College (1)  
 Returning to Norway (3)  
 Entering the Workforce (2)

All Graduates

Math = 22.0  
 Science = 23.2  
 STEM = 22.8  
 English = 22.6  
 Reading = 24.9

Composite = 23.4

Top 1/2 of Class

Math = 24.9  
 Science = 25.5  
 STEM = 25.4  
 English = 26.9  
 Reading = 29.2

Composite = 26.8

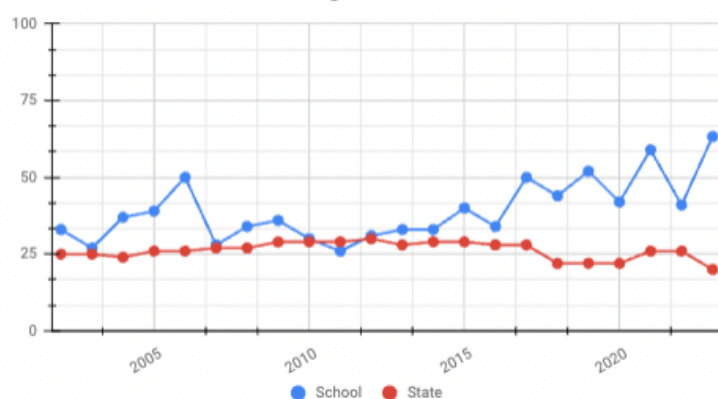
Top 1/4 of Class

Math = 27.0  
 Science = 27.0  
 STEM = 27.2  
 English = 29.8  
 Reading = 31.0

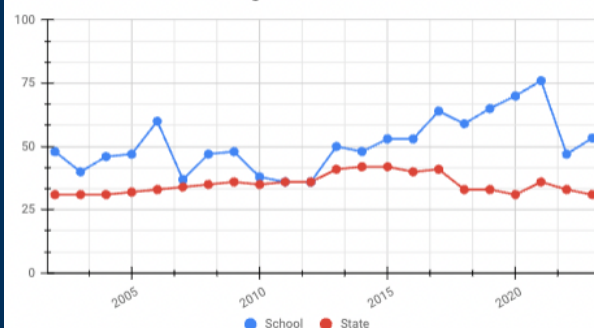
Composite = 28.9

# ACT COLLEGE READINESS BENCHMARKS

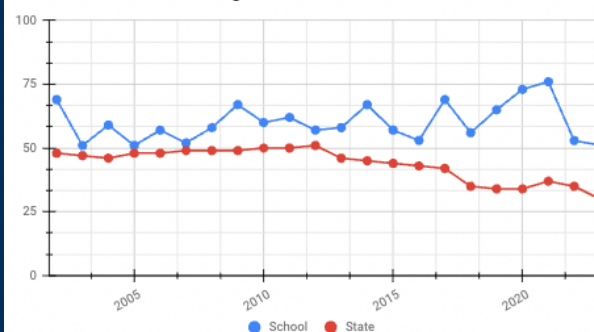
% of Students Meeting All Four Benchmark Scores



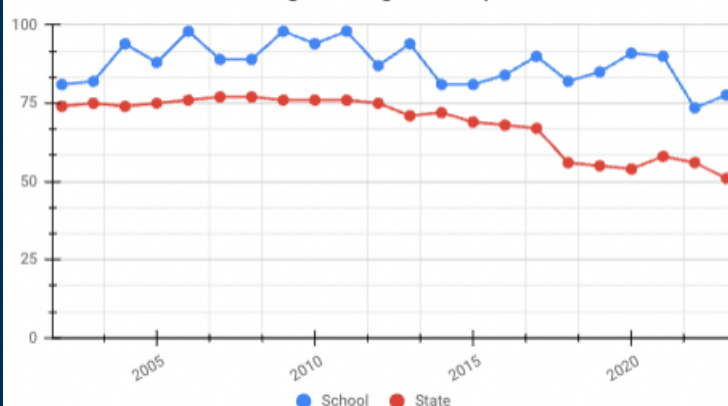
% of Students Meeting ACT Science Benchmark Score



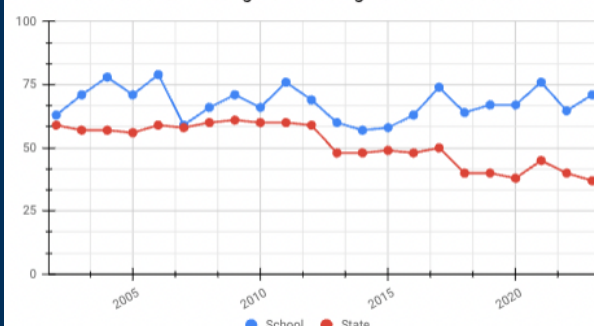
% of Students Meeting ACT Mathematics Benchmark Scores



% of Students Meeting ACT English Comp Benchmark Score



% of Students Meeting ACT Reading Benchmark Scores



## DETAILED ENROLLMENT BY GRADE

### Student Enrollment by Grade – 2023-24

Gender	6th	7th	8th	9th	10th	11th	12th	Total
Male	25	29	26	28	17	26	16	154
Female	31	36	27	21	15	13	11	167
Total	56	65	53	49	32	29	27	321

## DETAILED ENROLLMENT BY CHURCH MEMBERSHIP

### Student Enrollment by Church Affiliation – 2023-24

	6th	7th	8th	9th	10th	11th	12th	Total
Calvary	-	-	4	2	2	2	0	10
Christ	14	22	14	16	8	7	3	84
Faith	9	9	4	3	2	2	1	29
Holy Savior	2	1	1	2	1	1	3	11
Immanuel	-	-	-	-	-	-	2	2
Messiah	14	15	9	7	10	11	9	75
Redeemer	-	1	-	7	1	1	4	14
Trinity	5	5	7	2	1	8	1	29
St. John Seward	-	-	1	-	1	-	-	2
Peace	1	-	2	-	-	-	-	3
The Rock	-	-	-	-	-	-	-	-
Word of Life	-	-	-	1	-	1	-	2
Non-Assoc Lutheran	4	3	3	3	1	2	2	18
Other Christian	3	6	6	5	5	4	1	30
No Church	5	3	2	1	-	-	1	12
Totals	56	65	53	49	27	39	27	321