

High school below slab plumbing and electrical installation is in progress, slab forms are 75% complete, and structural steel delivered 10/18/23. Elementary school addition footings are complete.



Concrete footings complete. Below slab plumbing and electrical in progress. (October 11, 2023)



Chemical pipe installation in progress (October 17, 2023)



Slab edge forms in progress (October 17, 2023)



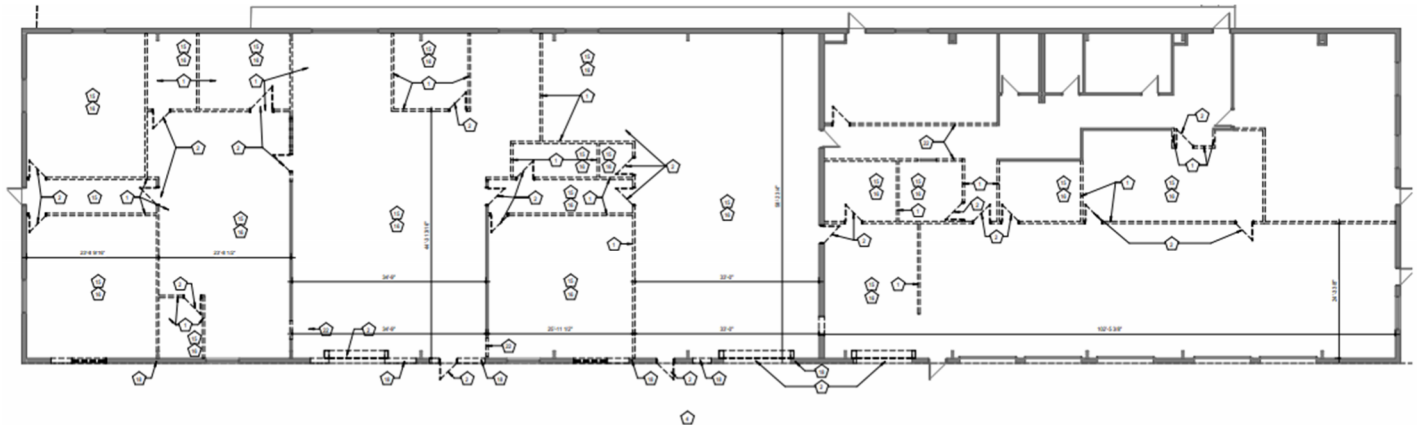
Concrete footings in progress (October 11, 2023)



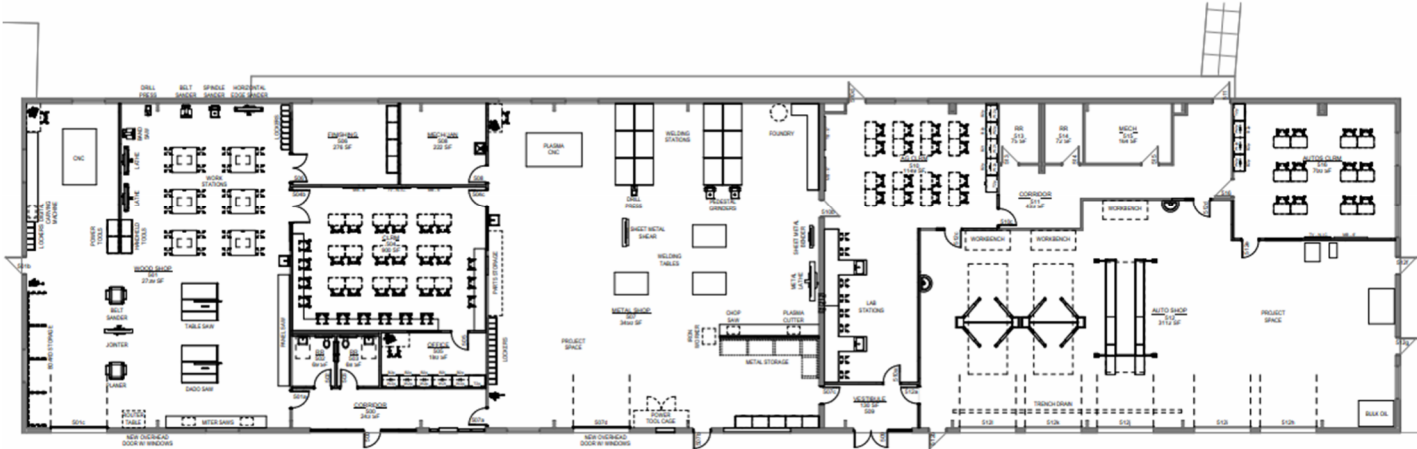
Concrete footings and anchor bolts complete (October 17, 2023)



Concrete footings and anchor bolts complete (October 17, 2023)



2 DEMOLITION PLAN - AREA F
130' x 110'



Project Plan for new CTE building (September 26, 2023)

- Upcoming:
 - High School Addition
 - Concrete slab on grade placement
 - Structural steel erection
 - Masonry storm structure erection
 - Elementary School Addition
 - Under slab plumbing and electrical install
 - Concrete slab on grade placement
 - Structural steel erection