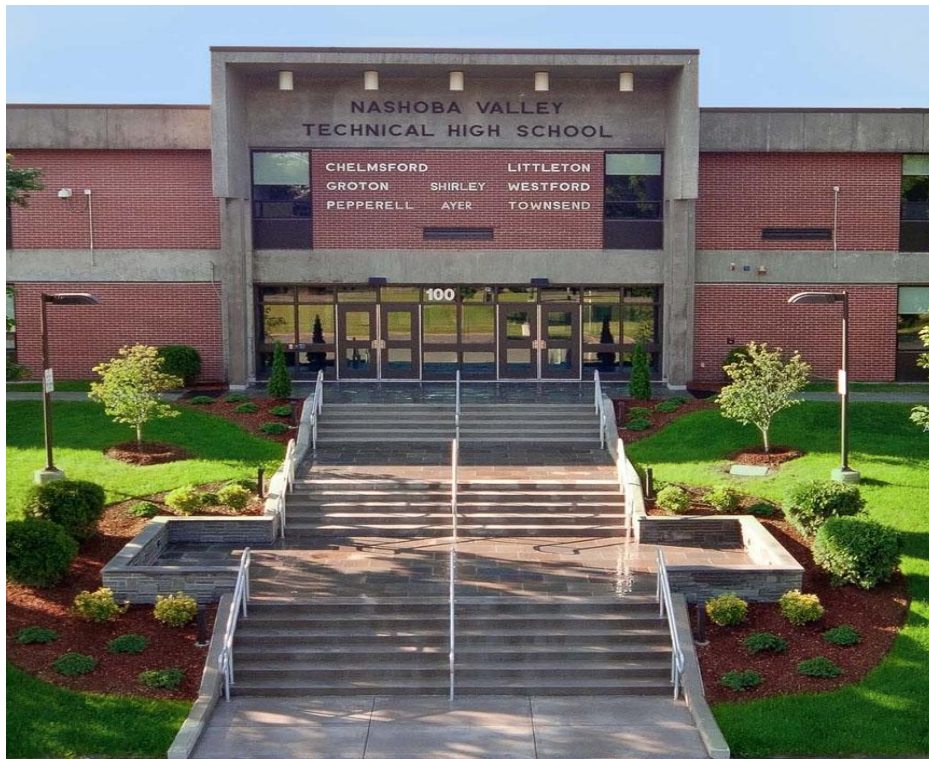




Back to School Newsletter

Nashoba Valley Technical High School!



From Principal Slotnick,

We hope you had a great summer full of fun and enriching activities. We can't wait to hear about your many summer experiences, and we look forward to your eager participation in all aspects of life at NT. Staff have been planning, preparing and studying to make sure they are ready to provide you with the best possible experience at our school. We hope you are as excited to kick off the start of the 2023-2024 school year as we are.

OPENING WEEK Schedule

Monday	August 28, 2023	Freshmen Orientation Day
Tuesday	August 29, 2023	Transfer Student Orientation
Wednesday	August 30, 2023	1st day of school-all students
Thursday	August 31, 2023	2nd day of school
Friday	September 1, 2023	No School
Monday	September 4, 2023	No School- Labor Day

SCHOOL YEAR CALENDAR

The NVTHS 2023-2024 School Year Calendar can be found on the school website under Documents; Calendars Folder at www.nashobatech.net or at the following link: [School Year Calendar](#)

STUDENT HEALTH AND EMERGENCY FORMS

Physical Exams and Immunizations

Massachusetts General Law chapter 76 section 15, mandates that all students entering high school submit a current physical examination and proof of immunizations. The physical must be within one year of the school start date or within 30 days after school entry.

Annual Student Health & Emergency Contact Form, Medications, and Action Plans

An Annual Student Emergency and Health Form is *required for all students and needs to be returned to the student's homeroom within the first 2 days of school.* [LINK To FORM](#)

WHO IS YOUR GUIDANCE COUNSELOR?

Last Names beginning with: **A - F** Ms. Courtney Crory

Last Names beginning with: **G - M** Mr. Aaron Spencer

Last Names beginning with: **N - Z** Ms. Erin Doherty

BUS ROUTES

[2023 - 2024 BUS Routes](#)

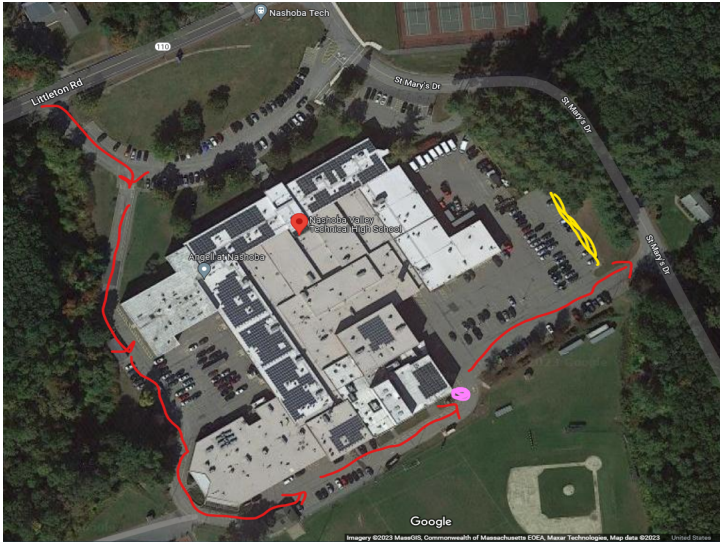
(Dee Bus Services, Inc - (978) 392-8639)

As soon as Dee Bus finalizes the bus routes for the year, we will post on the Nashoba Tech Website. Nashoba Tech does not create the Bus Routes. During the school year, if you have questions or concerns with bus drivers, or bus routes etc. please contact Dee Bus directly at the number above.

STUDENT DROP OFF and PICK UP

Morning Drop off will occur as follows:

Take the immediate right turn after entering the semicircle in front of the school (*see map*). This will take you around the school, towards the rear of the building. Students will be permitted to exit vehicles when they reach the staff member at the corner closest to the Performing Arts Center beginning at 7:30am.



Additionally, we are requiring student drivers with trucks to park along the St. Mary's Drive side of the lot (yellow lines) in order to make it easier for parents to exit after dropping off their students.

Afternoon Pick Up

Afternoon pick up will take place in the front of the school building. Please adhere to the following:

- Please pull all the way in as tightly as possible to the car in front of you.
(no big gaps)
- The first cars in, should pull in all the way to the end of where the right side of the parking lot ends, before the school bus entrance..
- Please park as tightly as possible so as to fit all cars into the school area as opposed to waiting on Route 110.
- Please continue to pull up when you can to keep the line tight and moving.
- As a reminder, it is state and federal law that cars cannot idle for more than 5 minutes.

SCHOOL DAY SCHEDULE

The school day begins at **7:55 a.m.** and all students must report to their homeroom no later than this time. Students dropped between 7:30 and 7:45 can wait in the cafeteria until the first bell. Doors open for student drivers at 7:45 a.m. Please be aware that the school building is locked, and students are not supervised before 7:30 a.m. Students should not arrive prior to this time. The school day ends at 2:30 p.m.

Students alternate between an academic week and a technical week referred to as an A week/B week schedule. The A/B week schedule is as follows:

A Week - Grade 9 & 11 (Academics)

B Week - Grade 9 & 11 (Technical)

A Week - Grade 10 & 12 (Technical)

B Week - Grade 10 & 12 (Academics)

CAFETERIA MEAL PROGRAM

In the school year 2023-2024, **all students will receive free breakfast and lunch at school.** This free program is being provided by the State of Massachusetts for all public schools. For the full letter and additional information please follow this link:

<https://www.nashobatech.net/documents/free-and-reduced-lunch-update/337845>

NVTHS DRESS CODE

Nashoba Tech is a community that is career-focused, fostering academic, personal and professional success. Standards of dress are maintained to ensure individual safety and promote student interest in their appearance for the future workforce. The educational experience at Nashoba Tech is to prepare students for life after high school. Therefore, we encourage a dress code that embraces moderation and avoids extremes. Students should wear clothing that is clean, neat, and appropriate for their academic and career technical training area as defined by the career program standards.

NEW POLICY - NVTHS POLICY RE: CELL PHONES

Below is an excerpt/summary of the Phones and Personal Entertainment Devices policy from the 2023-2024 student handbook. Please see the student handbook for a full review of the policy.

The NVTHS cell phone protocol is aimed to help students learn and reduce distractions. According to recent studies, when schools restrict smartphones in the classroom, student attention, engagement and grades quickly improve on the whole. Subsequently, test scores increased by an average of 10 to 15 percent. The results of these surveys were most pronounced for high school students over 16 who – not coincidentally – have been found to have the highest volume of screen time usage with their cellphones. The new NVTHS cell phone policy is in place to prevent students from using their phones during inappropriate times of the school day, which can distract from learning, participation and engaging in their education.

Below are guidelines that have been put in place for 2023-2024 School Year with respect to the NVTHS Cell Phone Policy:

1. *Cell phones and earbuds may only be used on school grounds before school, during lunch, and after school.*
2. *Cell phone and earbud use is prohibited in classrooms, restrooms, and school offices.*
3. *During the instructional day, cell phones and earbuds must remain out of sight and in silent mode.*
4. *Cell phones and earbuds must be placed in lockers, backpacks, cell phone holders within classrooms or another location away from students and their desks during tests and assessments.*
5. *At teacher request, students must give cell phones and earbuds to teachers for storage during the class period.*

6. *If students need to place an emergency phone call during the day, they should request to go to the guidance office, the dean's office or the main office/reception.*
7. *Students may be subject to disciplinary action if their use of their cell phone disrupts the school's educational environment. Examples of this include, but are not limited to: cheating, bullying, harassment, unlawful recording or photographing, violating other school rules.*
8. *The school and its staff are not responsible for any damage to or theft of a student's cell phone. Students must properly secure and take care of their own phones.*

In Summary:

Personal entertainment devices, including any type of headphone and/or earbuds are prohibited from use at NVTHS between the hours of 7:55 a.m. and 2:30 p.m., with the exception being during lunch. Any student using a cell phone or personal entertainment device during the school day where not allowed, outside of a specific educational or health plan, is subject to disciplinary action.

NEW POLICY - NVTHS POLICY RE: ATTENDANCE

Helpful Hints to Avoid Attendance Problems

Call the **attendance line at 978-692-4711/Option 2** or complete the Google form LINK: **[Absent Tardy Dismissal Reporting GoogleForm](#)** when a student is going to be absent

The student attendance policy has been changed to reflect absences accrued throughout the school year. Previously, students were limited to three (3) unexcused absences per trimester for a total of nine (9) unexcused absences per year. After considering the appeals of the attendance committee, that number has increased and absences are no longer accrued by trimester. The new policy in place for the 2023-24 school year now allows students twelve (12) unexcused absences in a 180-day school year.

Excused absences are defined as the following:

- Death in the family
- Doctor verified illness
- Religious holidays
- Court/legal matters (verification to be provided to the principal)
- College visits (3 per year pre-approved by the Guidance Counselor)
- Union Tests, Program Certification Tests & Co-Op Interviews (verified by the CTE instructor)
- School-sponsored trips
- Extenuating circumstances (Approved by the Dean or Principal)
- Dangerous driving conditions
- Out-of-school suspensions

Unexcused absences are defined as any absences not qualifying as an “excused absence”.

Students absent from school are responsible to collect work missed during their absence.

Students who are absent during the regular school day are not permitted to participate in any after-school activity occurring on the day of absence.

Consequences for accruing twelve (12) unexcused absences are as follows: During the school year, a student with twelve (12) unexcused absences will be assigned an attendance failure/no credit received in all academic and technical courses. Additionally, if a student participates or plans to participate in cooperative education and/or athletics/extracurricular activities such as but not limited to athletics, class officers, Skills USA, etc. will be prohibited from doing so. This is subject to protections related to students with disabilities. Students may appeal the failure through the Dean of Students Office.

The same policies regarding attendance that apply to the school day are upheld for individual classes. Students missing more than ½ of a class are considered absent. Twelve (12) absences in an individual class will result in a loss of credit for that class.

STUDENT AND PARENT HANDBOOK

For a full guide to Nashoba Tech information and policies please read through the Student and Parent Handbook. All Students are required to sign the student handbook acknowledgement by the end of the first week of school.

[Student Handbook](#)

TECHNOLOGY HELP DESK:

(NVTHS website/Useful Links) or at:

[Chromebook Help Desk Ticket](#)

[ASPEN Student Help Desk Ticket](#)

[ASPEN Portal Basic Instruction.pdf](#)

[ASPEN Parent Guardian Help Desk Ticket](#)

A NOTE FROM THE NVTHS FOUNDATION

Welcome back! On behalf of the NVTHS Foundation I would like to share a bit about us, our purpose and activities, as well as opportunities for involvement. The NVTHS Foundation is a 501c3 non-profit educational foundation formed to support and enrich the NT community. The board is made up of administrators, teachers, parents and community members. We have already provided scholarships, support for Skills USA and supported a successful application for a grant a teacher applied for to use with his students. Our hope is to continue growing and increase our impact for good in the NT community. Please consider volunteering time or attending one of our events - Cornhole Tournament, Craft Fair, Trivia Night! We will send out information on a meet and greet as well in the near future. Also, stay tuned for a school year calendar available to purchase, production will begin soon after school starts. Pre-order forms will be available soon. If you have any questions please feel free to email NVTHSFoundation@nashobatech.net. We look forward to another successful year supporting the NT community!

Milaina Mainieri
NVTHS Foundation President