

St. Thomas the Apostle Catholic School  
1331 N. Main Street Elkhart, IN 46514  
574-264-4855 Website: stselkhart.com

February 16, 2024



# STS Newsletter

## From the Principal's Desk.....

Happy Lenten Friday St. Thomas Families,

Our Ash Wednesday service was packed! It was wonderful to see so many families attend Mass as we entered the season of Lent. We host boys basketball tonight and tomorrow, the gym has been in steady use for several weekends in a row now. And our PTO sponsored ice-skating last night at NIBCO Park. St. Thomas has continued to make progress as the "center" of activities in our community.

As we begin Lent, Father Logan will be offering confession for our students. Father has focused his lessons on helping students understand the importance of confession in order to prepare for the opportunity on February 21.

Nice job to our Athletic Department these past four weeks. St. Thomas has hosted games for the ICCL consistently, establishing us as a center of activities on the Elkhart Side of the Diocese. We appreciate all those who volunteer to help staff concessions, ticket taking, score-

board, and other duties required by a host school. Your time and talent helps to offset costs and give every Spartan student the ability to participate free of charge.

We had a beautiful night for ice skating yesterday. Temperatures were chilly, but not too cold and the ice was perfect for skating. I thoroughly enjoyed spending time with everyone who attended, it was great to see kids learning to skate do well by the end of the night. I raced a few kids too - I'm not ashamed to say I was bested a time or two.

Thank you all for a great week and terrific start to the Lenten season. I hope you all have a restful 3 days, we'll look forward to seeing everyone back on Tuesday.

All the best in Christ,

Chris

Darkness cannot drive out darkness, only light can do that. Hate cannot drive out hate, only Love can do that. ~Rev. King

## UPCOMING!!!

### NO SCHOOL

President's Day  
2/19/24

### Confession

Grades 2—8  
2/21/24

### FREE

### Casual Day

Thur., Feb. 22, 2024

### Open House

Sun, Mar. 24, 2024  
11:30 AM-1:30 PM  
More info to come

### Daddy Daughter Dance

Fri, April 19, 2024

### Grandparent's Day

Fri, April 26, 2024

### Mother Son Nerf Night

Sat., May 18, 2024

### 8th Grade Graduation & Mass

Wed. May 29, 2024



## REMINDER!!

**JEANS/ATHLETIC PANTS ARE ONLY TO BE WORN ON NON MASS DAYS & ONCE MONEY IS TURNED IN.**



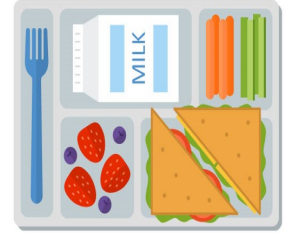
Please continue to send back your \$ for You Can Lend A Hand -Burger King Coupon fundraiser.

\*\*If you will not be taking part, please return coupons to the office. STS pays for coupons whether sold or not.

## LUNCH NOTES!!!

Please remember to order lunches for the following week by 5 PM on Friday!

We are having many students without lunch and without a lunch order. Students without a lunch will be given an alternate lunch.



# SPRING PTO

## EVENTS

YOUR INVITED

19

APRIL

DADDY  
DAUGHTER  
DANCE

26

APRIL

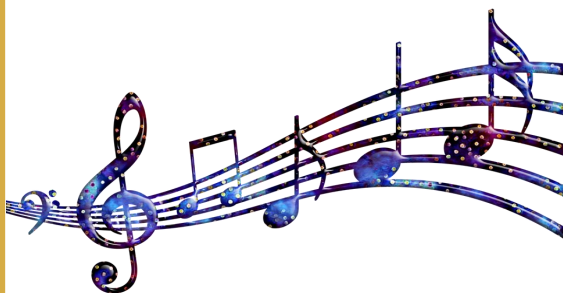
GRANDPARENT'S  
DAY

18

MAY

MOTHER & SON  
NERF NIGHT

ALL STS STUDENTS ARE ALWAYS INVITED TO  
PARTICIPATE ANY PTO EVENT!  
PLEASE JOIN US WITH ANY  
SPECIAL PERSON IN YOUR LIFE!  
WE LOOK FORWARD TO SEEING YOU THERE!



## SAVE THESE MUSICAL DATES!!!!

*Tuesday, March 26th -*

4th/5th Music Program at 6:30pm

*Thursday, May 16th -*

Middle School Spring Program at 6:30pm

*Tuesday, May 21st -*

Spring Band Concert at 6:30pm



# WINTER HAPPENINGS

Spartans on Ice





# WINTER HAPPENINGS

Spartans on Ice



Diaper Drive  
Thank you St. Thomas  
Families!! Look at our  
mountain behind the  
smiling Spartans!





# ST. THOMAS THE APOSTLE PARISH

## LENTEN ACTIVITIES



AT ST. THOMAS PARISH, THIS  
WILL BE IN CONJUNCTION WITH  
MASS & ADORATION.

### LENTEN EMAIL CHALLENGE

It's not too late to sign up!  
<https://forms.gle/Nn3Z5fdP56YZpRxx8>  
or call or email the church office.

**Are you interested in "challenging" yourself this Lenten season? Sign up now to join us for a 40 day journey of spiritual renewal that traditionally focuses on prayer, fasting, and almsgiving. Each day a new but manageable challenge will be sent to you via email. Regardless of how many you do, the aim is to push yourself in your spiritual growth. As with any good work, it can be challenging and should be! Prepare to be amazed by the gift that will result from the fruits of your labors in this Lenten Challenge.**

### WELCOME WEEKEND

2024

#### WHAT IS WELCOME WEEKEND?

A WEEKEND FILLED WITH NEW EXPERIENCES, BUILDING KINGDOM COMMUNITY, AND INSPIRATION TO GROW OR RENEW YOUR FAITH. WELCOME IS AN OPPORTUNITY TO RE-ENERGIZE YOUR HEART AND MIND WITH JESUS.



#### JOIN US

RETREAT FROM YOUR LIVES FOR TWO DAYS AND FOCUS ON YOU AND YOUR FAITH. LEAVE WITH A FULL HEART AND TRANSFORMATION OF THE MIND.



#### Contact Us



574-226-1881 - WOMEN'S CONTACT  
574-226-1300 - MEN'S CONTACT



PAGJSS@AOL.COM - WOMEN'S CONTACT  
AHICKS@WARRICK&BOYN.COM - MEN'S CONTACT



[WWW.STTHOMASELKHART.COM](http://WWW.STTHOMASELKHART.COM)



ST THOMAS THE APOSTLE  
CATHOLIC CHURCH

WOMEN'S RETREAT MARCH 9 & 10

MEN'S RETREAT MARCH 16 & 17



### Stations of the Cross



One way to enter into prayer this Lent is to reflect on the suffering of Jesus with the Stations of the Cross.

Join us each Friday in Lent (except Good Friday)  
for Stations of the Cross at  
2:15pm and 7:00pm

\*Friday, March 22nd will be Living Stations of the Cross. The afternoon time will change to 1:30pm that day only.

# FEBRUARY 2024

\*UPDATED 2/16/24-Confessions 2/21/24

Sun	Mon	Tue	Wed	Thu	Fri	Sat
				1 JA in a Day	2	3
			Catholic Schools Week January 28—Feb 3			
				B	C	
4	5 D	6 A	7 All School Mass 8:15 AM PTO Mtg After Mass B	8 \$2 CASUAL DAY C	9 D	10
11	12 A	13 Early Dismissal 12:30 PM NO AFTERCARE B	14 ASH WEDNESDAY All School Mass 8:15 AM C	15 D	16 A	17
18 	19 NO SCHOOL President's Day	20 B	21 All School Mass 8:15 AM *CONFESSION GRADES 2-8* C	22 FREE CASUAL DAY D	23 A	24
25	26 B	27 C	28 All School Mass 8:15 AM D	29 A	Saint Valentine, Bishop & Martyr, pray for us.	



# St. Thomas the Apostle School 2023 - 2024 Academic Calendar

Updated August 14, 2023

August 2023						
S	M	T	W	T	F	S
		1	2	3	4	5
6	7	8	9	10	11	12
13	14	15	16	17	18	19
20	21	22	23	24	25	26
27	28	29	30	31		

14-15 Teacher work days  
16 First Day for Students  
24 Parent Night 6 —7:30 PM

January 2024						
S	M	T	W	T	F	S
	1	2	3	4	5	6
7	8	9	10	11	12	13
14	15	16	17	18	19	20
21	22	23	24	25	26	27
28	29	30	31			

1-5 Christmas Break  
8 Classes Resume  
15 Martin Luther King Jr. – No School

September 2023						
S	M	T	W	T	F	S
					1	2
3	4	5	6	7	8	9
10	11	12	13	14	15	16
17	18	19	20	21	22	23
24	25	26	27	28	29	30

4 Labor Day - No School  
7 Curriculum Day—No School  
8 Mission Day—No School

February 2024						
S	M	T	W	T	F	S
				1	2	3
4	5	6	7	8	9	10
11	12	13	14	15	16	17
18	19	20	21	22	23	24
25	26	27	28	29		

14 Ash Wednesday  
19 President's Day - No School

October 2023						
S	M	T	W	T	F	S
1	2	3	4	5	6	7
8	9	10	11	12	13	14
15	16	17	18	19	20	21
22	23	24	25	26	27	28
29	30	31				

13 End of Quarter 1  
19-23 Washington DC Trip  
27 Fall Break - No School

March 2024						
S	M	T	W	T	F	S
					1	2
3	4	5	6	7	8	9
10	11	12	13	14	15	16
17	18	19	20	21	22	23
24	25	26	27	28	29	30
31						

15 End of Quarter  
29 Good Friday—No School  
31 Easter Sunday

November 2023						
S	M	T	W	T	F	S
			1	2	3	4
5	6	7	8	9	10	11
12	13	14	15	16	17	18
19	20	21	22	23	24	25
26	27	28	29	30		

20-24 Thanksgiving Break

April 2024						
S	M	T	W	T	F	S
	1	2	3	4	5	6
7	8	9	10	11	12	13
14	15	16	17	18	19	20
21	22	23	24	25	26	27
28	29	30				

1-5 Spring Break

December 2023						
S	M	T	W	T	F	S
					1	2
3	4	5	6	7	8	9
10	11	12	13	14	15	16
17	18	19	20	21	22	23
24	25	26	27	28	29	30
31						

22 End of Quarter 2  
Dismissal at 12:30 pm  
25-29 Christmas Break - No School

May 2024						
S	M	T	W	T	F	S
			1	2	3	4
5	6	7	8	9	10	11
12	13	14	15	16	17	18
19	20	21	22	23	24	25
26	27	28	29	30	31	

27 Memorial Day—No School  
31 Last Day of School  
Dismissal at 12:30 pm

## End of Grading Periods

1st Quarter	October 13	40
2nd Quarter	December 22	44
3rd Quarter	March 15	48
4th Quarter	May 24	48
		180

**Key** No School  
End of Quarter  
Important Dates

