

LEA Name : Columbia Borough SD
Address : 200 N. Fifth St.
Columbia , PA 17512

County : Lancaster
AUN Number : 113361503
LEA Type : SD

Annual Financial Report
Accuracy Certification Statement

For Fiscal Year Ending
6/30/2023

Pennsylvania Department of Education
&
Office of Comptroller Operations

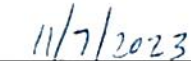
PDE-2056: Intermediate Unit

PDE-2057: School District, AVTS/CTC, Charter School,
and Special Program Jointure

CERTIFICATION: By signing this page I agree that the electronic data submitted is a complete and accurate statement of the financial operations and status of the local education agency for the fiscal year. It has been prepared in accordance with generally accepted accounting principles and established Commonwealth of PA reporting guidelines.



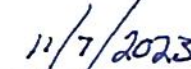
Chief School Administrator Signature



Date



Board Secretary Signature



Date

Keith D Ramsey

Contact Person

kramsey@columbiabsd.org

Contact Person E-mail Address

(717)629-3786

Ext :

Contact Person Telephone Number

(717)351-1408

Contact Person Fax Number

Audit Certification
Annual Financial Report:
For Fiscal Year Ending 6/30/2023
(Pursuant to PA School Code Section 218(b))

LEA Name : Columbia Borough SD
AUN Number : 113361503
County : Lancaster

Audit Certification Due: 12/31/2023

This certification is applicable to the Annual Financial Report data submitted through the Consolidated Financial Reporting System (CFRS).

CERTIFICATION: By signing this page I agree that the financial statements of the school have been properly audited as noted above pursuant to Article XXIV, and in the auditor's professional opinion, the Annual Financial Report (PDE-2057) submitted through CFRS is materially consistent with the audited financial statements.

Chief School Administrator


Signature

11/7/2023
Date

Board Secretary


Signature

11/7/2023
Date

Keith D Ramsey

Contact Person

kramsey@columbiabsd.org

Contact Person E-mail Address

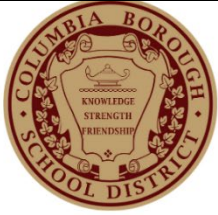
(717)629-3786

Ext :

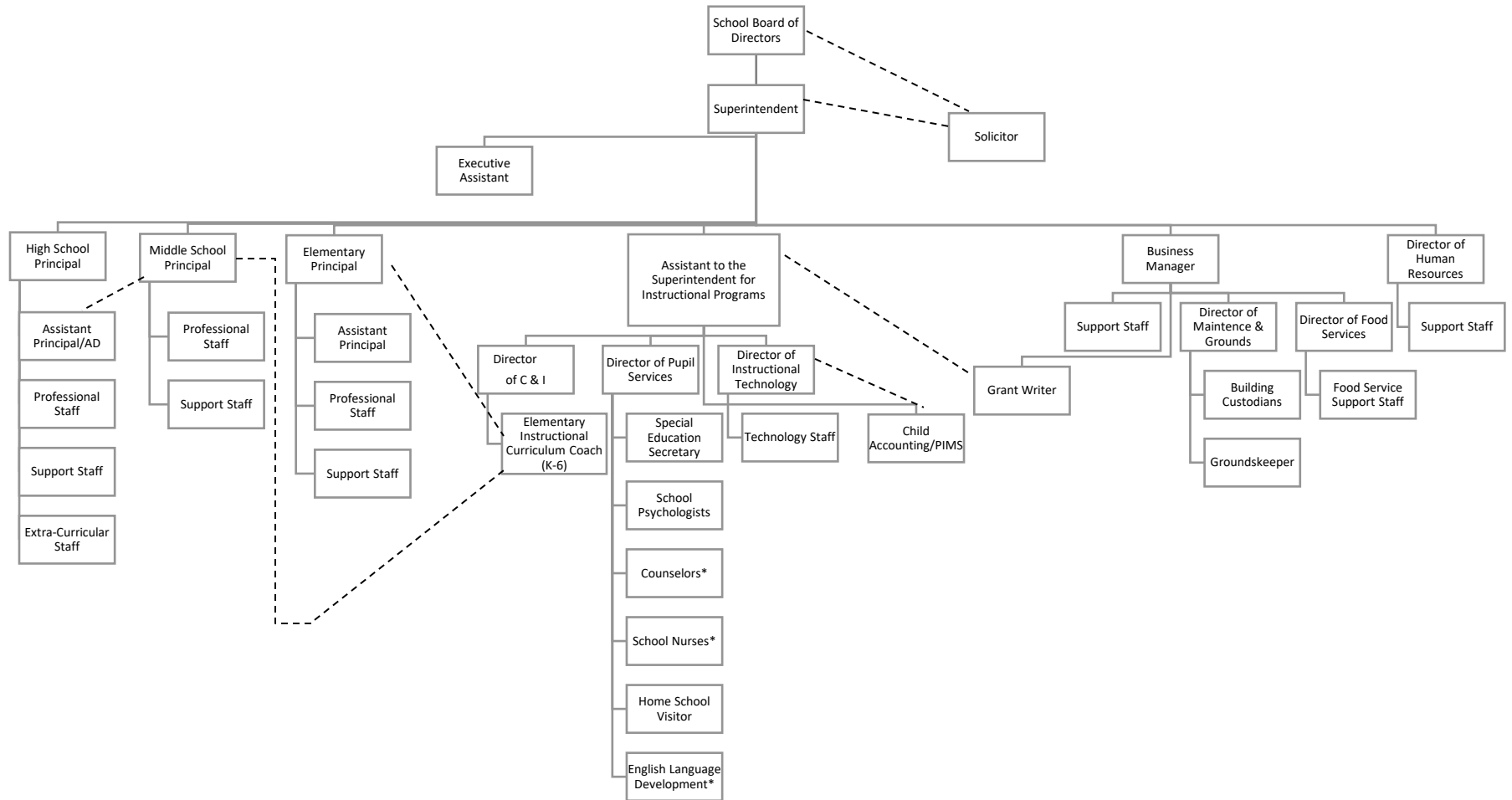
Contact Person Telephone Number

(717)351-1408

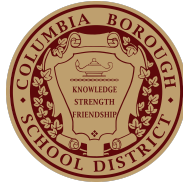
Contact Person Fax Number



COLUMBIA BOROUGH SCHOOL DISTRICT



*co-supervision with building principals



Book	Policy Manual
Section	600 Finances
Title	GASB Statement 34
Code	622
Status	Active
Adopted	May 20, 2021

Purpose

The Board recognizes the need to implement the required accounting and financial reporting standards stipulated by the Pennsylvania Department of Education.

The primary objectives of implementing the Governmental Accounting Standards Board (GASB) Statement 34 are to assure compliance with state requirements, and properly account for both the financial and economic resources of the district.

Authority

Participation of the school district in any such activity shall be in accordance with Board policy.[\[1\]](#)[\[2\]](#)

Delegation of Responsibility

The responsibility to coordinate the compilation and preparation of all information necessary to implement this policy is delegated to the Business Manager.

The designated individual shall be responsible for implementing the necessary procedures to establish and maintain a fixed asset inventory, including depreciation schedules. Depreciation shall be computed on a straight-line basis over the useful lives of the assets, using an averaging convention. Normal maintenance and repairs shall be charged to expense as incurred; major renewals and betterments that materially extend the life or increase the value of the asset shall be capitalized. A schedule of accumulated depreciation shall be consistent from year to year. The basis for depreciation, including groups of assets and useful lives, shall be in writing and submitted for review to the Board.

The Business Manager shall prepare the required Management Discussion and Analysis (MD&A). The MD&A shall be in the form required by GASB Statement 34 and shall be submitted to the Board for approval, prior to publication.

Prior to submission of the MD&A for Board approval, the district's independent auditors shall review the MD&A, in accordance with SAS No. 52, "Required Supplementary Information".

Legal [1. 24 P.S. 218](#)

[2. 24 P.S. 613](#)

Governmental Accounting Standards Board, Statement No. 34

<u>Val Number</u>	<u>Description</u>	<u>Justification</u>
30116	<p>Revenue Detail: A large amount has been reported as Earnings on Investments in Fund 32, account 6500, which should only include interest earnings of this fund. Correct or provide a brief explanation of the revenue reported.</p> <p>Revenue Detail 6500, Fund 32: \$178,218.36</p>	<p>The amount reported in Fund 32 under 6500 includes only earnings on investments for Fund 32. The interest rate has increased from the prior year.</p>
42420	<p>Expenditure Detail: Total current year 2700-513 expenditure varies from prior year by 10%. Correct the data or enter a justification.</p> <p>2700-513, AFR Exp Detail: \$411,686.87 2700-513, PY AFR Amount: \$320,190.48</p>	<p>The District transported additional students in 2022-23 as compared to 2021-22</p>
50440	<p>SESS - 2260 Instruction and Curriculum Development Services: SESS Schedule amounts for Special Education vary from prior year by 40% or more. Correct the data or enter a justification.</p> <p>SESS Schedule 2260: \$383,865.31 Prior Year SESS Schedule 2260: \$266,140.77</p>	<p>The District added a position in the 2022-23 fiscal year for a</p>
50450	<p>SESS - 2350 Legal and Accounting Services: SESS Schedule amounts for Special Education vary from prior year by 40% or more. Correct the data or enter a justification.</p> <p>SESS Schedule 2350: \$4,757.17 Prior Year SESS Schedule 2350: \$1,665.67</p>	<p>The District incurred additional legal fees during 2022-23 as compared to the previous year.</p>

LEA : 113361503 Columbia Borough SD

Printed 11/7/2023 11:57:22 AM

Amounts Expressed in Whole Dollars		<u>General Fund</u> <u>(10)</u>	<u>Student Sponsored</u> <u>Activity Fund</u> <u>(21)</u>	<u>Public Purpose Trust</u> <u>(27)</u>	<u>Other Compt Approved</u> <u>(28)</u>	<u>Athletic / Activity</u> <u>(29)</u>
Assets And Deferred Outflows Of Resources						
Assets						
0100	Cash and Cash Equivalents	13,782,635				
0110	Investments	504,852				
0120	Taxes Receivable	621,749				
0130	Due From Other Funds	8,210				
0141	Due From Other Governments	107,018				
0142	State Revenue Receivable	1,135,036				
0143	Federal Revenue Receivable	1,477,102				
0145	Other Intergovernmental Revenue Receivable	156,834				
0146	Due from Primary Government					
0147	Due from Component Unit					
0150	Other Receivables	21,118				
0170	Inventories					
0180	Prepaid Expenses (Expenditures)					
0190	Other Current Assets					
Total Assets		\$17,814,554				
0910	Deferred Outflows of Resources					
Total Assets And Deferred Outflows Of Resources		\$17,814,554				

LEA : 113361503 Columbia Borough SD

Printed 11/7/2023 11:57:22 AM

Amounts Expressed in Whole Dollars		<u>Capital Reserve (690.</u> <u>1850)</u> <u>(31)</u>	<u>Capital Reserve (1431)</u> <u>(32)</u>	<u>Other Capital Projects</u> <u>Fund</u> <u>(39)</u>	<u>Debt Service</u> <u>(40)</u>	<u>Permanent</u> <u>(90)</u>
Assets And Deferred Outflows Of Resources						
Assets						
0100	Cash and Cash Equivalents		4,153,272			
0110	Investments					
0120	Taxes Receivable					
0130	Due From Other Funds		1,280,973			
0141	Due From Other Governments					
0142	State Revenue Receivable					
0143	Federal Revenue Receivable					
0145	Other Intergovernmental Revenue Receivable					
0146	Due from Primary Government					
0147	Due from Component Unit					
0150	Other Receivables					
0170	Inventories					
0180	Prepaid Expenses (Expenditures)					
0190	Other Current Assets					
Total Assets			\$5,434,245			
0910	Deferred Outflows of Resources					
Total Assets And Deferred Outflows Of Resources			\$5,434,245			

LEA : 113361503 Columbia Borough SD

Printed 11/7/2023 11:57:22 AM

Amounts Expressed in Whole Dollars		<u>Total Governmental</u> <u>Funds</u>
Assets And Deferred Outflows Of Resources		
Assets		
0100 Cash and Cash Equivalents	17,935,907	
0110 Investments	504,852	
0120 Taxes Receivable	621,749	
0130 Due From Other Funds	1,289,183	
0141 Due From Other Governments	107,018	
0142 State Revenue Receivable	1,135,036	
0143 Federal Revenue Receivable	1,477,102	
0145 Other Intergovernmental Revenue Receivable	156,834	
0146 Due from Primary Government		
0147 Due from Component Unit		
0150 Other Receivables	21,118	
0170 Inventories		
0180 Prepaid Expenses (Expenditures)		
0190 Other Current Assets		
Total Assets	\$23,248,799	
0910 Deferred Outflows of Resources		
Total Assets And Deferred Outflows Of Resources	\$23,248,799	

LEA : 113361503 Columbia Borough SD

Printed 11/7/2023 11:57:22 AM

Amounts Expressed in Whole Dollars		<u>General Fund</u> <u>(10)</u>	<u>Student Sponsored</u> <u>Activity Fund</u> <u>(21)</u>	<u>Public Purpose Trust</u> <u>(27)</u>	<u>Other Compt Approved</u> <u>(28)</u>	<u>Athletic / Activity</u> <u>(29)</u>
Liabilities And Deferred Inflows Of Resources And Fund Balances						
Liabilities						
0400	Due to Other Funds	3,455,245				
0411	Due to Other Governments					
0412	Due to Primary Government					
0413	Due to Component Unit					
0420	Accounts Payable	1,389,919				
0430	Contracts Payable					
0440	Current Portion of Long-Term Debt					
0450	Short-Term Payables					
0461	Accrued Salaries and Benefits	2,394,581				
0462	Payroll Deductions and Withholding	93,367				
0480	Unearned Revenues	63,802				
0490	Other Current Liabilities	221,038				
Total Liabilities		\$7,617,952				
0950	Deferred Inflows of Resources	234,745				
Fund Balances						
0810	Nonspendable Fund Balance					
0820	Restricted Fund Balance					
0830	Committed Fund Balance	7,496,368				
0840	Assigned Fund Balance					
0850	Unassigned Fund Balance	2,465,489				
Total Fund Balances		\$9,961,857				
Total Liabilities, Deferred Inflows Of Resources And Fund Balances		\$17,814,554				

LEA : 113361503 Columbia Borough SD

Printed 11/7/2023 11:57:22 AM

Amounts Expressed in Whole Dollars		<u>Capital Reserve (690.</u> <u>1850)</u> <u>(31)</u>	<u>Capital Reserve (1431)</u> <u>(32)</u>	<u>Other Capital Projects</u> <u>Fund</u> <u>(39)</u>	<u>Debt Service</u> <u>(40)</u>	<u>Permanent</u> <u>(90)</u>
Liabilities And Deferred Inflows Of Resources And Fund Balances						
Liabilities						
0400	Due to Other Funds					
0411	Due to Other Governments					
0412	Due to Primary Government					
0413	Due to Component Unit					
0420	Accounts Payable		1,635,177			
0430	Contracts Payable					
0440	Current Portion of Long-Term Debt					
0450	Short-Term Payables					
0461	Accrued Salaries and Benefits					
0462	Payroll Deductions and Withholding					
0480	Unearned Revenues					
0490	Other Current Liabilities					
Total Liabilities			\$1,635,177			
0950	Deferred Inflows of Resources					
Fund Balances						
0810	Nonspendable Fund Balance					
0820	Restricted Fund Balance		3,799,068			
0830	Committed Fund Balance					
0840	Assigned Fund Balance					
0850	Unassigned Fund Balance					
Total Fund Balances			\$3,799,068			
Total Liabilities, Deferred Inflows Of Resources And Fund Balances			\$5,434,245			

LEA : 113361503 Columbia Borough SD

Printed 11/7/2023 11:57:22 AM

Amounts Expressed in Whole Dollars		<u>Total Governmental</u> <u>Funds</u>
Liabilities And Deferred Inflows Of Resources And Fund Balances		
Liabilities		
0400 Due to Other Funds		3,455,245
0411 Due to Other Governments		
0412 Due to Primary Government		
0413 Due to Component Unit		
0420 Accounts Payable		3,025,096
0430 Contracts Payable		
0440 Current Portion of Long-Term Debt		
0450 Short-Term Payables		
0461 Accrued Salaries and Benefits		2,394,581
0462 Payroll Deductions and Withholding		93,367
0480 Unearned Revenues		63,802
0490 Other Current Liabilities		221,038
Total Liabilities		\$9,253,129
0950 Deferred Inflows of Resources		234,745
Fund Balances		
0810 Nonspendable Fund Balance		
0820 Restricted Fund Balance		3,799,068
0830 Committed Fund Balance		7,496,368
0840 Assigned Fund Balance		
0850 Unassigned Fund Balance		2,465,489
Total Fund Balances		\$13,760,925
Total Liabilities, Deferred Inflows Of Resources And Fund Balances		\$23,248,799

Amounts Expressed in Whole Dollars	<u>General Fund</u> <u>(10)</u>	<u>Student Sponsored</u> <u>Activity Fund</u> <u>(21)</u>	<u>Public Purpose Trust</u> <u>(27)</u>	<u>Other Compt Approved</u> <u>(28)</u>	<u>Athletic / Activity</u> <u>(29)</u>
Revenues					
6000 Revenue from Local Sources	13,348,886				
7000 Revenue from State Sources	16,609,914				
8000 Revenue from Federal Sources	4,963,355				
Total Revenues	\$34,922,155				
Expenditures					
1000 Instruction	17,556,052				
2000 Support Services	9,735,742				
3000 Operation of Non-Instructional Services	706,386				
4000 Facilities Acquisition, Construction and Improvement Services	465,328				
5110 Debt Service	2,630,725				
5130 Refund of Prior Year Revenues / Receipts	6,610				
5140 Leases and Other Right-to-Use Arrangements					
Total Expenditures	\$31,100,843				
Excess (Deficiency) Of Revenues Over Expenditures	\$3,821,312				
Other Financing Sources (Uses)					
9110 Face Value of Bonds Issued					
9120 Proceeds from Refunding of Bonds					
9130 Bond Premiums					
9200 Proceeds from Extended Term Financing, Leases, and Other Right-to-Use Arrangements					
9300 Interfund Transfers - IN					
9400 Sale of or Compensation for Loss of Fixed Assets					
9710 Transfers from Component Units					
9720 Transfers from Primary Governments					
9910 Other Financing Sources Not Listed in the 9000 Series					
9990 Insurance Recoveries					
5120 Debt Service – Refunded Bonds					
5150 Bond Discounts					
5200 Interfund Transfers – Out	1,000,179				
5300 Transfers Out to Component Units/Primary Governments					
Total Other Financing Sources (Uses)	(\$1,000,179)				

Amounts Expressed in Whole Dollars		<u>Capital Reserve (690.1850)</u> <u>(31)</u>	<u>Capital Reserve (1431)</u> <u>(32)</u>	<u>Other Capital Projects</u> <u>Fund</u> <u>(39)</u>	<u>Debt Service</u> <u>(40)</u>	<u>Permanent</u> <u>(90)</u>
Revenues						
6000	Revenue from Local Sources		178,218			
7000	Revenue from State Sources					
8000	Revenue from Federal Sources					
Total Revenues			\$178,218			
Expenditures						
1000	Instruction					
2000	Support Services					
3000	Operation of Non-Instructional Services					
4000	Facilities Acquisition, Construction and Improvement Services		2,822,312			
5110	Debt Service					
5130	Refund of Prior Year Revenues / Receipts					
5140	Leases and Other Right-to-Use Arrangements					
Total Expenditures			\$2,822,312			
Excess (Deficiency) Of Revenues Over Expenditures			(\$2,644,094)			
Other Financing Sources (Uses)						
9110	Face Value of Bonds Issued					
9120	Proceeds from Refunding of Bonds					
9130	Bond Premiums					
9200	Proceeds from Extended Term Financing, Leases, and Other Right-to-Use Arrangements					
9300	Interfund Transfers - IN		1,000,000			
9400	Sale of or Compensation for Loss of Fixed Assets					
9710	Transfers from Component Units					
9720	Transfers from Primary Governments					
9910	Other Financing Sources Not Listed in the 9000 Series					
9990	Insurance Recoveries					
5120	Debt Service – Refunded Bonds					
5150	Bond Discounts					
5200	Interfund Transfers – Out					
5300	Transfers Out to Component Units/Primary Governments					
Total Other Financing Sources (Uses)			\$1,000,000			

Amounts Expressed in Whole Dollars		<u>Total Governmental Funds</u>
Revenues		
6000	Revenue from Local Sources	13,527,104
7000	Revenue from State Sources	16,609,914
8000	Revenue from Federal Sources	4,963,355
Total Revenues		\$35,100,373
Expenditures		
1000	Instruction	17,556,052
2000	Support Services	9,735,742
3000	Operation of Non-Instructional Services	706,386
4000	Facilities Acquisition, Construction and Improvement Services	3,287,640
5110	Debt Service	2,630,725
5130	Refund of Prior Year Revenues / Receipts	6,610
5140	Leases and Other Right-to-Use Arrangements	
Total Expenditures		\$33,923,155
Excess (Deficiency) Of Revenues Over Expenditures		\$1,177,218
Other Financing Sources (Uses)		
9110	Face Value of Bonds Issued	
9120	Proceeds from Refunding of Bonds	
9130	Bond Premiums	
9200	Proceeds from Extended Term Financing, Leases, and Other Right-to-Use Arrangements	
9300	Interfund Transfers - IN	1,000,000
9400	Sale of or Compensation for Loss of Fixed Assets	
9710	Transfers from Component Units	
9720	Transfers from Primary Governments	
9910	Other Financing Sources Not Listed in the 9000 Series	
9990	Insurance Recoveries	
5120	Debt Service – Refunded Bonds	
5150	Bond Discounts	
5200	Interfund Transfers – Out	1,000,179
5300	Transfers Out to Component Units/Primary Governments	
Total Other Financing Sources (Uses)		(\$179)

Amounts Expressed in Whole Dollars		<u>General Fund</u> <u>(10)</u>	<u>Student Sponsored</u> <u>Activity Fund</u> <u>(21)</u>	<u>Public Purpose Trust</u> <u>(27)</u>	<u>Other Compt Approved</u> <u>(28)</u>	<u>Athletic / Activity</u> <u>(29)</u>
Special And Extraordinary Items						
9920	Special Items – Gains					
9930	Extraordinary Items – Gains					
5520	Special Items – Losses					
5530	Extraordinary Items – Losses					
Net Change In Fund Balances		\$2,821,133				
Fund Balance						
0001	Fund Balance - Beginning of Fiscal Year	7,140,725				
Fund Balance - End Of Year		\$9,961,858				

Amounts Expressed in Whole Dollars		<u>Capital Reserve (690.</u> <u>1850)</u> <u>(31)</u>	<u>Capital Reserve (1431)</u> <u>(32)</u>	<u>Other Capital Projects</u> <u>Fund</u> <u>(39)</u>	<u>Debt Service</u> <u>(40)</u>	<u>Permanent</u> <u>(90)</u>
Special And Extraordinary Items						
9920	Special Items – Gains					
9930	Extraordinary Items – Gains					
5520	Special Items – Losses					
5530	Extraordinary Items – Losses					
Net Change In Fund Balances			(\$1,644,094)			
Fund Balance						
0001	Fund Balance - Beginning of Fiscal Year		5,443,162			
Fund Balance - End Of Year			\$3,799,068			

Amounts Expressed in Whole Dollars		<u>Total Governmental Funds</u>
Special And Extraordinary Items		
9920	Special Items – Gains	
9930	Extraordinary Items – Gains	
5520	Special Items – Losses	
5530	Extraordinary Items – Losses	
Net Change In Fund Balances		\$1,177,039
Fund Balance		
0001	Fund Balance - Beginning of Fiscal Year	12,583,887
Fund Balance - End Of Year		\$13,760,926

Amounts Expressed in Whole Dollars		<u>Food Service</u> <u>(51)</u>	<u>Child Care</u> <u>Operations</u> <u>(52)</u>	<u>Other Enterprise</u> <u>(58)</u>	<u>TOTAL</u>	<u>Internal Service</u> <u>(60)</u>
Assets And Deferred Outflows Of Resources						
Current Assets						
0100	Cash and Cash Equivalents	770,265			770,265	2,796,079
0110	Investments					1,022,685
0130	Due From Other Funds	75,592			75,592	2,098,680
0141	Due From Other Governments					
0142	State Revenue Receivable					
0143	Federal Revenue Receivable	2,030			2,030	
0146	Due from Primary Government					
0147	Due from Component Unit					
0150	Other Receivables	779			779	321,101
0170	Inventories	35,201			35,201	
0180	Prepaid Expenses (Expenditures)					
0190	Other Current Assets					
Total Current Assets		\$883,867			\$883,867	\$6,238,545
Noncurrent Assets						
0211	Land					
0212	Site Improvements (Net)					
0220	Buildings and Building Improvements (Net)					
0230	Tangible Property and Intangible Right-To-Use Assets (Net)	115,535			115,535	
0250	Construction in Progress					
0260	Long Term Prepayments					
0290	Other Noncurrent Assets					
Total Noncurrent Assets		\$115,535			\$115,535	
0910	Deferred Outflows of Resources	180,622			180,622	
Total Assets And Deferred Outflows Of Resources		\$1,180,024			\$1,180,024	\$6,238,545

Amounts Expressed in Whole Dollars	<u>Food Service</u> <u>(51)</u>	<u>Child Care</u> <u>Operations</u> <u>(52)</u>	<u>Other Enterprise</u> <u>(58)</u>	<u>TOTAL</u>	<u>Internal Service</u> <u>(60)</u>
Liabilities And Deferred Inflows Of Resources And Net Position					
Current Liabilities					
0400 Due to Other Funds					
0411 Due to Other Governments					
0413 Due to Component Unit					
0420 Accounts Payable	963			963	
0430 Contracts Payable					
0440 Current Portion of Long-Term Debt					
0450 Short-Term Payables					
0461 Accrued Salaries and Benefits	3,842			3,842	186,984
0462 Payroll Deductions and Withholding					
0480 Unearned Revenues	3,872			3,872	
0490 Other Current Liabilities					
Total Current Liabilities	\$8,677			\$8,677	\$186,984
Noncurrent Liabilities					
0510 Bonds Payable					
0520 Extended-Term Financing Agreements Payable					
0530 Lease and Other Right-To-Use Obligations					
0540 Accumulated Compensated Absences					
0550 Authority Lease Obligations					
0560 Other Post-Employment Benefits (OPEB)	35,188			35,188	
0570 Net Pension Liability	845,739			845,739	
0599 Other Noncurrent Liabilities					
Total Noncurrent Liabilities	\$880,927			\$880,927	
Total Liabilities	\$889,604			\$889,604	\$186,984
0950 Deferred Inflows of Resources	52,756			52,756	
Net Position					
0791 Net Investment in Capital Assets	115,535			115,535	
0008 Restricted Net Position (0792 – 0798)					
0799 Unrestricted Net Position	122,129			122,129	6,051,561
Total Net Position	\$237,664			\$237,664	\$6,051,561
Total Liabilities And Deferred Inflows Of Resources And Net Position	\$1,180,024			\$1,180,024	\$6,238,545

Amounts Expressed in Whole Dollars	Food Service (51)	Child Care Operations (52)	Other Enterprise (58)	TOTAL	Internal Service (60)
Operating Revenues					
6600 Food Service Revenue	40,514			40,514	
0071 Charges for Services					3,732,012
0072 Other Operating Revenue	6,028			6,028	36,891
Total Operating Revenues	\$46,542			\$46,542	\$3,768,903
Operating Expenses					
100 Personnel Services – Salaries	302,070			302,070	
200 Personnel Services – Employee Benefits	214,308			214,308	2,124,919
300 Purchased Professional and Technical Services	7,739			7,739	
400 Purchased Property Services	21,525			21,525	
500 Other Purchased Services	41,147			41,147	
600 Supplies	525,737			525,737	
740 Depreciation	11,654			11,654	
770 Amortization Expense					
810 Dues and Fees	250			250	
880 Refunds of Prior Years' Receipts					
890 Miscellaneous Expenditures					
Total Operating Expenses	\$1,124,430			\$1,124,430	\$2,124,919
Operating Income (Loss)	(\$1,077,888)			(\$1,077,888)	\$1,643,984
Non Operating Revenues (Expenses)					
6500 Earnings on Investments	22,820			22,820	140,685
6830 Federal Revenue from Intermediary Sources					
6920 Contributions and Donations from Private Sources					
6930 Gains or Losses on Sale of Fixed Assets					
6991 Refunds of a Prior Year Expenditure					
7000 Revenue from State Sources	118,235			118,235	
8000 Revenue from Federal Sources	1,042,916			1,042,916	
9990 Insurance Recoveries					
820 Claims and Judgments Against the LEA					
830 Interest					
TOTAL Non Operating Revenues (Expenses)	\$1,183,971			\$1,183,971	\$140,685
Income (Loss) Before Contributions And Transfers	\$106,083			\$106,083	\$1,784,669

Amounts Expressed in Whole Dollars	<u>Food Service</u> <u>(51)</u>	<u>Child Care Operations</u> <u>(52)</u>	<u>Other Enterprise</u> <u>(58)</u>	<u>TOTAL</u>	<u>Internal Service</u> <u>(60)</u>
Contributions, Transfers, and Special and Extraordinary Items					
5200 Interfund Transfers – Out					
5300 Transfers Out to Component Units/Primary Governments					
5520 Special Items – Losses					
5530 Extraordinary Items – Losses					
9300 Interfund Transfers - IN	179			179	
9500 Capital Contributions					
9700 Transfers IN From Component Units/Primary Governments					
9920 Special Items – Gains					
9930 Extraordinary Items – Gains					
Change In Net Position	\$106,262			\$106,262	\$1,784,669
0002 Net Position - Beginning of Fiscal Year	131,402			131,402	4,266,892
0003 Accounting Changes / Residual Equity Transfers					
Net Position - End Of Year	\$237,664			\$237,664	\$6,051,561

LEA : 113361503 Columbia Borough SD

Printed 11/7/2023 11:57:56 AM

Amounts Expressed in Whole Dollars		<u>Food Service</u> <u>(51)</u>	<u>Child Care Operations</u> <u>(52)</u>	<u>Other Enterprise</u> <u>(58)</u>	<u>TOTAL</u>	<u>Internal Service(60)</u>
Cash Flows From Operating Activities						
0011	Cash Receipts From Users	41,911			41,911	
0012	Cash Receipts From Assessments Made to Other Funds					1,369,367
0013	Cash Receipts From Earnings on Investments					
0014	Cash Receipts From Other Operating Revenue					
0015	Cash Payments To Employees For Services	483,754			483,754	
0016	Cash Payments For Insurance Claims					2,004,992
0017	Cash Payments To Suppliers For Goods and Services	512,103			512,103	
0018	Cash Payments For Other Operating Expenses					
Net Cash Provided By (Used For) Operating Activities		(\$953,946)			(\$953,946)	(\$635,625)
Cash Flows From Non-Capital Financing Activities						
0021	Receipts From Local Sources - 6000					
0022	Receipts From State Sources - 7000	118,235			118,235	
0023	Receipts From Federal Sources -8000	955,059			955,059	
0024	Notes and Loans Received (Repaid)					
0025	Interest Paid on Notes/Loans - 5100-830					
0026	Operating Transfers In (Out)/Residual Equity Trans					
0027	Operating Transfers In (Out) Primary Government / Comp Unit	179			179	
0028	Receipts From Refund of Prior Year Expenditures - 6991					
0029	Special and Extraordinary Gains (losses)					
0030	Receipts from Insurance Recoveries -9990					
Net Cash Prov By (Used for) Non-Capital Financing Activities		\$1,073,473			\$1,073,473	
Cash Flows From Capital and Related Financing Activities						
0031	Payments For Fac Acq, Const, and Imp - 4000					
0032	Gain / (Loss) on Sale of Fixed Assets - 6930					
0033	Proceeds From Extended Term Financing - 9200					
0034	Principal Paid on Financing Agreements					
0035	Interest Paid on Financing Agreements - 5100-830					
0036	(Inc) Dec in Contributed Capital	(25,475)			(25,475)	
Net Cash Prov By (Used for) Capital and Related Financing Activities		(\$25,475)			(\$25,475)	
Cash Flows From Investing Activities						
0041	Earnings on Investments - 6500	22,820			22,820	140,685
0042	Purchase of Inv Securities / Deposits to Inv Pools					(1,000,000)
0043	Receipts From Investment Pool Withdrawals					
0044	Proceeds from Sale and Maturity of Inv Securities					

LEA : 113361503 Columbia Borough SD

Printed 11/7/2023 11:57:56 AM

0045 Loans Received (Paid)

Net Cash Prov By (Used for) Investing Activities	\$22,820	\$22,820	(\$859,315)
--	----------	----------	-------------

LEA : 113361503 Columbia Borough SD

Printed 11/7/2023 11:57:56 AM

	Food Service (51)	Child Care Operations (52)	Other Enterprise (58)	TOTAL	Internal Service (60)
Net Increase (Decrease) in Cash Flows	116,872			116,872	(1,494,940)
0004 Cash and Cash Equivalents Beginning of Year	653,393			653,393	4,291,019
Cash and Cash Equivalents at Year End	\$770,265			\$770,265	\$2,796,079
Reconciliation of Operating Income (Loss) To Net Cash Provided by (Used For) Operating Activities					
0005 Operating Income (Loss) per REP	(1,077,888)			(1,077,888)	1,643,984
Adjustments					
0051 Depreciation and Net Amortization	11,654			11,654	
0052 Provision for Uncollectible Accounts					
0053 Other Adjustments	89,015			89,015	
Effect of Changes in Assets, Liabilities, Deferred Outflows and Deferred Inflows					
0054 (Inc) Dec In Accounts Receivable (0120-0150)	(4,439)			(4,439)	(2,399,536)
0055 Advances to Other Funds					
0056 (Inc) Dec in Inventories (0170)	(2,170)			(2,170)	
0057 (Inc) Dec in Prepaid Expenses (0180)					
0058 (Inc) Dec in Other Current or Noncurrent Assets					
0064 Deferred Outflows (0910)	(37,115)			(37,115)	
0059 Inc (Dec) in Accounts Payable (0400-0450)	(2,550)			(2,550)	
0060 Inc (Dec) in Accrued Salaries/Benefits (0461)	(422)			(422)	119,927
0065 Inc (Dec) in Net Pension Liabilities (0570)	169,488			169,488	
0066 Inc (Dec) in Other Postemp Benefit Oblig (0560)	(3,985)			(3,985)	
0061 Inc (Dec) in Payroll Deductions/Withholding (0462)					
0062 Inc (Dec) in Unearned Revenue (0480)	(192)			(192)	
0063 Inc (Dec) in Other Current or Noncurrent Liabilities					
0067 Deferred Inflows (0950)	(95,342)			(95,342)	
Total Adjustments	\$123,942			\$123,942	(\$2,279,609)
Cash Provided By (Used for) Total	(\$953,946)			(\$953,946)	(\$635,625)

COMBINED STATEMENT OF CASH FLOWS
SCHEDULE OF NONCASH INVESTING, CAPITAL, AND FINANCING ACTIVITIES

Explanation of Transaction and Balance Sheet Effect	Amount
USDA Donated Commodities	89,015
Total	\$89,015

LEA : 113361503 Columbia Borough SD

Printed 11/7/2023 11:57:57 AM

Amounts Expressed in Whole Dollars		<u>Private Purpose Trust</u> <u>(71)</u>	<u>Investment Trust</u> <u>(72)</u>	<u>Pension Trust</u> <u>(73)</u>	<u>Student Activity Custodial</u> <u>(81)</u>
Assets And Deferred Outflows Of Resources					
Assets					
0100	Cash and Cash Equivalents	134,439			34,013
0110	Investments				
0130	Due From Other Funds				
0140	Due from Other Governments, Primary Government and Component Units				
0150	Other Receivables				500
0170	Inventories				
0180	Prepaid Expenses (Expenditures)				
0190	Other Current Assets				
0220	Buildings and Building Improvements (Net)				
0230	Tangible Property and Intangible Right-To-Use Assets (Net)				
Total Assets		\$134,439			\$34,513
0910	Deferred Outflows of Resources				
Total Assets And Deferred Outflows Of Resources		\$134,439			\$34,513

LEA : 113361503 Columbia Borough SD

Printed 11/7/2023 11:57:57 AM

Amounts Expressed in Whole Dollars		<u>Other Custodial</u> <u>(89)</u>	<u>Fiduciary Component Units</u> <u>(98)</u>	<u>Total Fiduciary Funds</u>
Assets And Deferred Outflows Of Resources				
Assets				
0100	Cash and Cash Equivalents			168,452
0110	Investments			
0130	Due From Other Funds			
0140	Due from Other Governments, Primary Government and Component Units			
0150	Other Receivables			500
0170	Inventories			
0180	Prepaid Expenses (Expenditures)			
0190	Other Current Assets			
0220	Buildings and Building Improvements (Net)			
0230	Tangible Property and Intangible Right-To-Use Assets (Net)			
Total Assets				\$168,952
0910	Deferred Outflows of Resources			
Total Assets And Deferred Outflows Of Resources				\$168,952

LEA : 113361503 Columbia Borough SD

Printed 11/7/2023 11:57:57 AM

Amounts Expressed in Whole Dollars	<u>Private Purpose Trust</u> <u>(71)</u>	<u>Investment Trust</u> <u>(72)</u>	<u>Pension Trust</u> <u>(73)</u>	<u>Student Activity Custodial</u> <u>(81)</u>
Liabilities, Deferred Inflows Of Resources And Net Position				
Liabilities				
0400 Due to Other Funds				
0410 Due to Other Governments, Primary Government and Component Units				
0420 Accounts Payable				8,497
0430 Contracts Payable				
0450 Short-Term Payables				
0460 Payroll Accruals and Withholdings				
0480 Unearned Revenues				
0490 Other Current Liabilities				
Total Liabilities				\$8,497
0950 Deferred Inflows of Resources				
Net Position				
0791 Net Investment in Capital Assets				
0009 Restricted Net Position (0792 – 0798)	134,439			26,016
0799 Unrestricted Net Position				
Total Net Position	\$134,439			\$26,016
Total Liabilities, Deferred Inflows Of Resources And Net Position	\$134,439			\$34,513

LEA : 113361503 Columbia Borough SD

Printed 11/7/2023 11:57:57 AM

Amounts Expressed in Whole Dollars		<u>Other Custodial</u> <u>(89)</u>	<u>Fiduciary Component Units</u> <u>(98)</u>	<u>Total Fiduciary Funds</u>
Liabilities, Deferred Inflows Of Resources And Net Position				
Liabilities				
0400	Due to Other Funds			
0410	Due to Other Governments, Primary Government and Component Units			
0420	Accounts Payable			8,497
0430	Contracts Payable			
0450	Short-Term Payables			
0460	Payroll Accruals and Withholdings			
0480	Unearned Revenues			
0490	Other Current Liabilities			
Total Liabilities				\$8,497
0950	Deferred Inflows of Resources			
Net Position				
0791	Net Investment in Capital Assets			
0009	Restricted Net Position (0792 – 0798)			160,455
0799	Unrestricted Net Position			
Total Net Position				\$160,455
Total Liabilities, Deferred Inflows Of Resources And Net Position				\$168,952

LEA : 113361503 Columbia Borough SD

Printed 11/7/2023 11:57:59 AM

Amounts Expressed in Whole Dollars	<u>Private Purpose Trust</u> <u>(71)</u>	<u>Investment Trust</u> <u>(72)</u>	<u>Pension Trust</u> <u>(73)</u>	<u>Student Activity</u> <u>Custodial</u> <u>(81)</u>	<u>Other Custodial</u> <u>(89)</u>	<u>Fiduciary Component</u> <u>Units</u> <u>(98)</u>
Additions						
0091 Gifts and Contributions	14,696					
0095 Net Investment Earnings						
0092 Other Additions				28,346		
Deductions						
0093 Scholarships Awarded	10,775					
0094 Other Deductions				29,007		
Change In Net Position	\$3,921			(\$661)		
0006 Net Position – Beginning of Fiscal Year	130,518			26,677		
0007 Net Position Held in Trust for Pension Benefits						
Net Position - End of Fiscal Year	\$134,439			\$26,016		

LEA : 113361503 Columbia Borough SD

Printed 11/7/2023 11:57:59 AM

Amounts Expressed in Whole Dollars		<u>Total Fiduciary</u>
		<u>Funds</u>
Additions		
0091	Gifts and Contributions	14,696
0095	Net Investment Earnings	
0092	Other Additions	28,346
Deductions		
0093	Scholarships Awarded	10,775
0094	Other Deductions	29,007
Change In Net Position		\$3,260
0006	Net Position – Beginning of Fiscal Year	157,195
0007	Net Position Held in Trust for Pension Benefits	
Net Position - End of Fiscal Year		\$160,455

	Revenue Reported In Current Year	Current Year Tax Accrual	Prior Year Tax Accrual	Taxes Collected In Current Year
Revenue from Local Sources				
6111 Current Real Estate Taxes	10,000,362.36			10,000,362.36
6112 Interim Real Estate Taxes	31,009.04			31,009.04
6113 Public Utility Realty Taxes	11,580.07			11,580.07
6114 Payments in Lieu of Current Taxes - State / Local	15,366.16			15,366.16
6143 Current Act 511 Local Services Taxes	13,582.81	3,437.13	3,412.99	13,558.67
6151 Current Act 511 Earned Income Taxes	1,193,144.24	246,255.91	236,699.07	1,183,587.40
6153 Current Act 511 Real Estate Transfer Taxes	245,509.72	51,887.24	17,896.90	211,519.38
6411 Delinquent Real Estate Taxes	477,458.12	85,424.54	93,276.15	485,309.73
6500 Earnings on Investments	540,769.53			
6700 Revenues from LEA Activities	29,003.12			
6831 Federal Revenue Received from Other Pennsylvania Public LEAs	30,697.85			
6832 Federal IDEA Revenue Received as Pass Through	454,775.00			
6833 Federal ARP Act IDEA Revenue Received as Pass Through	48,783.59			
6910 Rentals	23,360.30			
6920 Contributions and Donations from Private Sources	146,440.34			
6944 Receipts from Other LEAs in Pennsylvania - Education	34,965.39			
6991 Refunds of a Prior Year Expenditure	12,577.18			
6999 Other Revenues Not Specified Above	39,500.73			
TOTAL Revenue from Local Sources	\$13,348,885.55	\$387,004.82	\$351,285.11	\$11,952,292.81

	Revenue Reported In Current Year			
<u>Revenue from State Sources</u>				
7111 Basic Education Funding-Formula	9,273,532.27			
7112 Basic Education Funding-Social Security	329,268.25			
7120 Level Up Supplement	755,979.12			
7160 Tuition for Orphans Subsidy	17,339.00			
7250 Migratory Children	200.00			
7271 Special Education funds for School-Aged Pupils	1,742,856.30			
7311 Pupil Transportation Subsidy	180,706.65			
7320 Rental and Sinking Fund Payments / Building Reimbursement Subsidy	787,547.08			
7330 Health Services (Medical, Dental, Nurse, Act 25)	24,616.26			
7340 State Property Tax Reduction Allocation	801,697.27			
7362 School Mental Health & Safety and Security Grants	103,888.25			
7505 Ready to Learn Block Grant	295,569.00			
7820 State Share of Retirement Contributions	2,296,714.45			
TOTAL Revenue from State Sources	\$16,609,913.90			

	Revenue Reported In Current Year			
<u>Revenue from Federal Sources</u>				
8514 Title I - Improving the Academic Achievement of the Disadvantaged	744,911.83			
8515 Title II - Preparing, Training, and Recruiting High Quality Teachers and Principals	111,117.95			
8516 Title III - Language Instruction for English Learners and Immigrant Students	3,208.58			
8517 Title IV - 21st Century Schools	56,611.26			
8743 ESSER II - Elementary and Secondary School Emergency Relief Fund	1,657,953.34			
8744 ARP ESSER - Elementary and Secondary School Emergency Relief Fund	2,082,397.25			
8747 ARP ECF - Emergency Connectivity Fund	3,350.70			
8751 ARP ESSER Learning Loss	79,449.39			
8752 ARP ESSER Summer Programs	29,739.87			
8753 ARP ESSER Afterschool Programs	2,327.48			
8754 ARP ESSER Homeless Children and Youth Funds	38,323.00			
8810 School-Based Access Medicaid Reimbursement Program (SBAP) Reimbursements (Access)	134,446.70			
8820 Medical Assistance Reimbursement for Administrative Claiming (Quarterly) Program	19,517.26			
TOTAL Revenue from Federal Sources	\$4,963,354.61			
TOTAL FROM ALL SOURCES	\$34,922,154.06	\$387,004.82	\$351,285.11	\$11,952,292.81

LEA : 113361503 Columbia Borough SD

Printed 11/7/2023 11:58:02 AM

	<u>General Fund (10)</u>	<u>Student Sponsored Activity Fund (21)</u>	<u>Public Purpose Trust (27)</u>	<u>Other Compt Approved (28)</u>	<u>Athletic / Activity (29)</u>	<u>Capital Reserve (690, 1850) (31)</u>
6000 Revenue from Local Sources						
6111 Current Real Estate Taxes	10,000,362.36					
6112 Interim Real Estate Taxes	31,009.04					
6113 Public Utility Realty Taxes	11,580.07					
6114 Payments in Lieu of Current Taxes - State / Local	15,366.16					
6143 Current Act 511 Local Services Taxes	13,582.81					
6151 Current Act 511 Earned Income Taxes	1,193,144.24					
6153 Current Act 511 Real Estate Transfer Taxes	245,509.72					
6411 Delinquent Real Estate Taxes	477,458.12					
6500 Earnings on Investments	540,769.53					
6700 Revenues from LEA Activities	29,003.12					
6831 Federal Revenue Received from Other Pennsylvania Public LEAs	30,697.85					
6832 Federal IDEA Revenue Received as Pass Through	454,775.00					
6833 Federal ARP Act IDEA Revenue Received as Pass Through	48,783.59					
6910 Rentals	23,360.30					
6920 Contributions and Donations from Private Sources	146,440.34					
6944 Receipts from Other LEAs in Pennsylvania - Education	34,965.39					
6991 Refunds of a Prior Year Expenditure	12,577.18					
6999 Other Revenues Not Specified Above	39,500.73					
6000 Total Revenue from Local Sources	\$13,348,885.55					
7000 Revenue from State Sources						
7111 Basic Education Funding-Formula	9,273,532.27					
7112 Basic Education Funding-Social Security	329,268.25					
7120 Level Up Supplement	755,979.12					
7160 Tuition for Orphans Subsidy	17,339.00					
7250 Migratory Children	200.00					
7271 Special Education funds for School-Aged Pupils	1,742,856.30					
7311 Pupil Transportation Subsidy	180,706.65					
7320 Rental and Sinking Fund Payments / Building Reimbursement Subsidy	787,547.08					
7330 Health Services (Medical, Dental, Nurse, Act 25)	24,616.26					
7340 State Property Tax Reduction Allocation	801,697.27					
7362 School Mental Health & Safety and Security Grants	103,888.25					
7505 Ready to Learn Block Grant	295,569.00					
7820 State Share of Retirement Contributions	2,296,714.45					
7000 Total Revenue from State Sources	\$16,609,913.90					

LEA : 113361503 Columbia Borough SD

Printed 11/7/2023 11:58:02 AM

	<u>Capital Reserve</u> <u>(1431) (32)</u>	<u>Other Capital</u> <u>Projects Fund (39)</u>	<u>Debt Service (40)</u>	<u>Permanent (90)</u>	<u>Total</u>
6000 Revenue from Local Sources					
6111 Current Real Estate Taxes					10,000,362.36
6112 Interim Real Estate Taxes					31,009.04
6113 Public Utility Realty Taxes					11,580.07
6114 Payments in Lieu of Current Taxes - State / Local					15,366.16
6143 Current Act 511 Local Services Taxes					13,582.81
6151 Current Act 511 Earned Income Taxes					1,193,144.24
6153 Current Act 511 Real Estate Transfer Taxes					245,509.72
6411 Delinquent Real Estate Taxes					477,458.12
6500 Earnings on Investments	178,218.36				718,987.89
6700 Revenues from LEA Activities					29,003.12
6831 Federal Revenue Received from Other Pennsylvania Public LEAs					30,697.85
6832 Federal IDEA Revenue Received as Pass Through					454,775.00
6833 Federal ARP Act IDEA Revenue Received as Pass Through					48,783.59
6910 Rentals					23,360.30
6920 Contributions and Donations from Private Sources					146,440.34
6944 Receipts from Other LEAs in Pennsylvania - Education					34,965.39
6991 Refunds of a Prior Year Expenditure					12,577.18
6999 Other Revenues Not Specified Above					39,500.73
6000 Total Revenue from Local Sources	\$178,218.36				\$13,527,103.91
7000 Revenue from State Sources					
7111 Basic Education Funding-Formula					9,273,532.27
7112 Basic Education Funding-Social Security					329,268.25
7120 Level Up Supplement					755,979.12
7160 Tuition for Orphans Subsidy					17,339.00
7250 Migratory Children					200.00
7271 Special Education funds for School-Aged Pupils					1,742,856.30
7311 Pupil Transportation Subsidy					180,706.65
7320 Rental and Sinking Fund Payments / Building Reimbursement Subsidy					787,547.08
7330 Health Services (Medical, Dental, Nurse, Act 25)					24,616.26
7340 State Property Tax Reduction Allocation					801,697.27
7362 School Mental Health & Safety and Security Grants					103,888.25
7505 Ready to Learn Block Grant					295,569.00
7820 State Share of Retirement Contributions					2,296,714.45
7000 Total Revenue from State Sources					\$16,609,913.90

LEA : 113361503 Columbia Borough SD

Printed 11/7/2023 11:58:02 AM

	<u>General Fund (10)</u>	<u>Student Sponsored Activity Fund (21)</u>	<u>Public Purpose Trust (27)</u>	<u>Other Compt Approved (28)</u>	<u>Athletic / Activity (29)</u>	<u>Capital Reserve (690, 1850) (31)</u>
8000 Revenue from Federal Sources						
8514 Title I - Improving the Academic Achievement of the Disadvantaged	744,911.83					
8515 Title II - Preparing, Training, and Recruiting High Quality Teachers and Principals	111,117.95					
8516 Title III - Language Instruction for English Learners and Immigrant Students	3,208.58					
8517 Title IV - 21st Century Schools	56,611.26					
8743 ESSER II - Elementary and Secondary School Emergency Relief Fund	1,657,953.34					
8744 ARP ESSER - Elementary and Secondary School Emergency Relief Fund	2,082,397.25					
8747 ARP ECF - Emergency Connectivity Fund	3,350.70					
8751 ARP ESSER Learning Loss	79,449.39					
8752 ARP ESSER Summer Programs	29,739.87					
8753 ARP ESSER Afterschool Programs	2,327.48					
8754 ARP ESSER Homeless Children and Youth Funds	38,323.00					
8810 School-Based Access Medicaid Reimbursement Program (SBAP) Reimbursements (Access)	134,446.70					
8820 Medical Assistance Reimbursement for Administrative Claiming (Quarterly) Program	19,517.26					
8000 Total Revenue from Federal Sources	\$4,963,354.61					
9000 Other Financing Sources						
9310 General Fund Transfers						
9000 Total Other Financing Sources						
Total From All Sources	\$34,922,154.06					

LEA : 113361503 Columbia Borough SD

Printed 11/7/2023 11:58:02 AM

	<u>Capital Reserve</u> <u>(1431) (32)</u>	<u>Other Capital</u> <u>Projects Fund (39)</u>	<u>Debt Service (40)</u>	<u>Permanent (90)</u>	<u>Total</u>
8000 Revenue from Federal Sources					
8514 Title I - Improving the Academic Achievement of the Disadvantaged					744,911.83
8515 Title II - Preparing, Training, and Recruiting High Quality Teachers and Principals					111,117.95
8516 Title III - Language Instruction for English Learners and Immigrant Students					3,208.58
8517 Title IV - 21st Century Schools					56,611.26
8743 ESSER II - Elementary and Secondary School Emergency Relief Fund					1,657,953.34
8744 ARP ESSER - Elementary and Secondary School Emergency Relief Fund					2,082,397.25
8747 ARP ECF - Emergency Connectivity Fund					3,350.70
8751 ARP ESSER Learning Loss					79,449.39
8752 ARP ESSER Summer Programs					29,739.87
8753 ARP ESSER Afterschool Programs					2,327.48
8754 ARP ESSER Homeless Children and Youth Funds					38,323.00
8810 School-Based Access Medicaid Reimbursement Program (SBAP) Reimbursements (Access)					134,446.70
8820 Medical Assistance Reimbursement for Administrative Claiming (Quarterly) Program					19,517.26
8000 Total Revenue from Federal Sources					\$4,963,354.61
9000 Other Financing Sources					
9310 General Fund Transfers	1,000,000.00				1,000,000.00
9000 Total Other Financing Sources	\$1,000,000.00				\$1,000,000.00
Total From All Sources	\$1,178,218.36				\$36,100,372.42

LEA : 113361503 Columbia Borough SD

Printed 11/7/2023 11:58:05 AM

	<u>General Fund (10)</u>	<u>Student Sponsored Activity Fund (21)</u>	<u>Public Purpose Trust (27)</u>	<u>Other Compt Approved (28)</u>	<u>Athletic / Activity (29)</u>	<u>Capital Reserve (690. 1850) (31)</u>
Revenue from Local Sources	13,348,885.55					
Revenue from State Sources	16,609,913.90					
Revenue from Federal Sources	4,963,354.61					
Other Financing Sources						
Total From All Sources	\$34,922,154.06					

LEA : 113361503 Columbia Borough SD

Printed 11/7/2023 11:58:05 AM

	<u>Capital Reserve (1431)</u> <u>(32)</u>	<u>Other Capital Projects</u> <u>Fund (39)</u>	<u>Debt Service (40)</u>	<u>Permanent (90)</u>	<u>Total</u>
Revenue from Local Sources	178,218.36				13,527,103.91
Revenue from State Sources					16,609,913.90
Revenue from Federal Sources					4,963,354.61
Other Financing Sources	1,000,000.00				1,000,000.00
Total From All Sources	\$1,178,218.36				\$36,100,372.42

LEA : 113361503 Columbia Borough SD

Printed 11/7/2023 11:58:09 AM

General Fund (10)

1000 Instruction	Total
100 <u>Personnel Services – Salaries</u>	
100 Personnel Services – Salaries	6,374,940.39
Total Personnel Services – Salaries	\$6,374,940.39
200 <u>Personnel Services – Employee Benefits</u>	
210 Group Insurance – Contracted Provider	5,417.17
220 Social Security Contributions	425,778.18
230 PSERS Retirement Contributions	2,082,352.74
260 Workers' Compensation	19,628.55
270 Group Insurance – Self-Insurance	2,448,568.55
Total Personnel Services – Employee Benefits	\$4,981,745.19
300 <u>Purchased Professional and Technical Services</u>	
322 Professional Educational Services – Ius	1,369,818.64
329 Professional Educational Services – Other	1,198,931.46
330 Other Professional Services	15,991.19
360 Employee Training and Development Services	1,200.00
390 Other Purchased Professional and Technical Services	960.50
Total Purchased Professional and Technical Services	\$2,586,901.79
400 <u>Purchased Property Services</u>	
430 Repairs and Maintenance Services	3,159.93
Total Purchased Property Services	\$3,159.93
500 <u>Other Purchased Services</u>	
510 Student Transportation Services	3,771.98
550 Printing and Binding	237.30
561 Tuition To Other School Districts Within the State	206,193.44
562 Tuition To Pennsylvania Charter Schools	1,544,030.78
564 Tuition To Career and Technology Centers	438,921.18
567 Tuition To Approved Private Schools (APS) and PA Chartered Schools for the Deaf and Blind	22,096.40
568 Tuition To Private Residential Rehabilitative Institutions (PRRI) [In-State] and Detention Centers	13,049.27
569 Tuition – Other	309,316.60
580 Travel	190.15
Total Other Purchased Services	\$2,537,807.10
600 <u>Supplies</u>	
610 General Supplies	472,441.34
630 Food	7,654.74
640 Books and Periodicals	17,708.76
650 Supplies & Fees – Technology Related	572,512.92
Total Supplies	\$1,070,317.76
800 <u>Other Objects</u>	
810 Dues and Fees	1,179.50
Total Other Objects	\$1,179.50
Total 1000 Instruction	\$17,556,051.66

LEA : 113361503 Columbia Borough SD

Printed 11/7/2023 11:58:09 AM

General Fund (10)				
1100 Regular Programs – Elementary / Secondary	<u>Elementary</u>	<u>Secondary</u>	<u>Federal</u>	<u>Total</u>
100 <u>Personnel Services – Salaries</u>				
100 Personnel Services – Salaries	852,713.14	2,070,397.03	1,942,844.09	4,865,954.26
Total Personnel Services – Salaries	\$852,713.14	\$2,070,397.03	\$1,942,844.09	\$4,865,954.26
200 <u>Personnel Services – Employee Benefits</u>				
210 Group Insurance – Contracted Provider	610.07	2,246.27	1,101.90	3,958.24
220 Social Security Contributions	63,360.46	156,164.08	92,937.44	312,461.98
230 PSERS Retirement Contributions	645,555.13	788,893.98	123,109.65	1,557,558.76
260 Workers' Compensation	3,186.26	5,091.93	6,955.45	15,233.64
270 Group Insurance – Self-Insurance	371,798.70	1,062,969.23	429,427.87	1,864,195.80
Total Personnel Services – Employee Benefits	\$1,084,510.62	\$2,015,365.49	\$653,532.31	\$3,753,408.42
300 <u>Purchased Professional and Technical Services</u>				
322 Professional Educational Services – lus	6,782.18	130,599.76		137,381.94
329 Professional Educational Services – Other	175,078.10	83,712.37	1,525.00	260,315.47
330 Other Professional Services	1,205.10	1,044.90	13,333.00	15,583.00
390 Other Purchased Professional and Technical Services	99.00			99.00
Total Purchased Professional and Technical Services	\$183,164.38	\$215,357.03	\$14,858.00	\$413,379.41
400 <u>Purchased Property Services</u>				
430 Repairs and Maintenance Services	1,030.00	2,129.93		3,159.93
Total Purchased Property Services	\$1,030.00	\$2,129.93		\$3,159.93
500 <u>Other Purchased Services</u>				
510 Student Transportation Services	390.00	2,391.98	990.00	3,771.98
550 Printing and Binding		237.30		237.30
561 Tuition To Other School Districts Within the State	9,300.16	49,435.78		58,735.94
562 Tuition To Pennsylvania Charter Schools	122,840.38	413,222.41		536,062.79
569 Tuition – Other		10,087.68		10,087.68
580 Travel	190.15			190.15
Total Other Purchased Services	\$132,720.69	\$475,375.15	\$990.00	\$609,085.84
600 <u>Supplies</u>				
610 General Supplies	172,856.37	67,387.18	225,356.95	465,600.50
630 Food	1,694.73	5,945.76		7,640.49
640 Books and Periodicals	5,985.26	3,921.82	6,317.04	16,224.12
650 Supplies & Fees – Technology Related	269,173.74	241,377.98	48,854.34	559,406.06
Total Supplies	\$449,710.10	\$318,632.74	\$280,528.33	\$1,048,871.17
800 <u>Other Objects</u>				
810 Dues and Fees	142.00	887.50		1,029.50
Total Other Objects	\$142.00	\$887.50		\$1,029.50
Total 1100 Regular Programs – Elementary / Secondary	\$2,703,990.93	\$5,098,144.87	\$2,892,752.73	\$10,694,888.53

LEA : 113361503 Columbia Borough SD

Printed 11/7/2023 11:58:09 AM

General Fund (10)

1110 Regular Programs

	Elementary	Secondary	Federal	Total
100 <u>Personnel Services – Salaries</u>				
100 Personnel Services – Salaries	852,713.14	2,070,397.03	1,496,744.95	4,419,855.12
Total Personnel Services – Salaries	\$852,713.14	\$2,070,397.03	\$1,496,744.95	\$4,419,855.12
200 <u>Personnel Services – Employee Benefits</u>				
210 Group Insurance – Contracted Provider	610.07	2,246.27	834.30	3,690.64
220 Social Security Contributions	63,360.46	156,164.08	59,546.22	279,070.76
230 PSERS Retirement Contributions	645,555.13	788,893.98	79,066.99	1,513,516.10
260 Workers' Compensation	3,186.26	5,091.93	4,465.98	12,744.17
270 Group Insurance – Self-Insurance	371,798.70	1,062,969.23	331,796.18	1,766,564.11
Total Personnel Services – Employee Benefits	\$1,084,510.62	\$2,015,365.49	\$475,709.67	\$3,575,585.78
300 <u>Purchased Professional and Technical Services</u>				
322 Professional Educational Services – lus	6,782.18	130,599.76		137,381.94
329 Professional Educational Services – Other	175,078.10	83,712.37		258,790.47
330 Other Professional Services	1,205.10	1,044.90	3,033.00	5,283.00
390 Other Purchased Professional and Technical Services	99.00			99.00
Total Purchased Professional and Technical Services	\$183,164.38	\$215,357.03	\$3,033.00	\$401,554.41
400 <u>Purchased Property Services</u>				
430 Repairs and Maintenance Services	1,030.00	2,129.93		3,159.93
Total Purchased Property Services	\$1,030.00	\$2,129.93		\$3,159.93
500 <u>Other Purchased Services</u>				
510 Student Transportation Services	390.00	2,391.98		2,781.98
550 Printing and Binding		237.30		237.30
561 Tuition To Other School Districts Within the State	9,300.16	49,435.78		58,735.94
562 Tuition To Pennsylvania Charter Schools	122,840.38	413,222.41		536,062.79
569 Tuition – Other		10,087.68		10,087.68
580 Travel	190.15			190.15
Total Other Purchased Services	\$132,720.69	\$475,375.15		\$608,095.84
600 <u>Supplies</u>				
610 General Supplies	172,856.37	67,387.18	225,356.95	465,600.50
630 Food	1,694.73	5,945.76		7,640.49
640 Books and Periodicals	5,985.26	3,921.82	6,317.04	16,224.12
650 Supplies & Fees – Technology Related	269,173.74	241,377.98	48,171.84	558,723.56
Total Supplies	\$449,710.10	\$318,632.74	\$279,845.83	\$1,048,188.67
800 <u>Other Objects</u>				
810 Dues and Fees	142.00	887.50		1,029.50
Total Other Objects	\$142.00	\$887.50		\$1,029.50
Total 1110 Regular Programs	\$2,703,990.93	\$5,098,144.87	\$2,255,333.45	\$10,057,469.25

LEA : 113361503 Columbia Borough SD

Printed 11/7/2023 11:58:09 AM

General Fund (10)

1190 Federally-Funded Regular Programs

	<u>Elementary</u>	<u>Secondary</u>	<u>Federal</u>	<u>Total</u>
100 <u>Personnel Services – Salaries</u>				
100 Personnel Services – Salaries			446,099.14	446,099.14
Total Personnel Services – Salaries			\$446,099.14	\$446,099.14
200 <u>Personnel Services – Employee Benefits</u>				
210 Group Insurance – Contracted Provider			267.60	267.60
220 Social Security Contributions			33,391.22	33,391.22
230 PSERS Retirement Contributions			44,042.66	44,042.66
260 Workers' Compensation			2,489.47	2,489.47
270 Group Insurance – Self-Insurance			97,631.69	97,631.69
Total Personnel Services – Employee Benefits			\$177,822.64	\$177,822.64
300 <u>Purchased Professional and Technical Services</u>				
329 Professional Educational Services – Other			1,525.00	1,525.00
330 Other Professional Services			10,300.00	10,300.00
Total Purchased Professional and Technical Services			\$11,825.00	\$11,825.00
500 <u>Other Purchased Services</u>				
510 Student Transportation Services			990.00	990.00
Total Other Purchased Services			\$990.00	\$990.00
600 <u>Supplies</u>				
650 Supplies & Fees – Technology Related			682.50	682.50
Total Supplies			\$682.50	\$682.50
Total 1190 Federally-Funded Regular Programs			\$637,419.28	\$637,419.28

LEA : 113361503 Columbia Borough SD

Printed 11/7/2023 11:58:09 AM

General Fund (10)

1200 Special Programs – Elementary / Secondary	Elementary	Secondary	Federal	Total
100 Personnel Services – Salaries				
100 Personnel Services – Salaries	742,777.36	559,360.54	177,227.38	1,479,365.28
Total Personnel Services – Salaries	\$742,777.36	\$559,360.54	\$177,227.38	\$1,479,365.28
200 Personnel Services – Employee Benefits				
210 Group Insurance – Contracted Provider	870.65	486.28	102.00	1,458.93
220 Social Security Contributions	55,765.59	41,959.11	13,361.93	111,086.63
230 PSERS Retirement Contributions	282,467.02	215,756.84	22,215.74	520,439.60
260 Workers' Compensation	1,864.49	1,375.36	986.48	4,226.33
270 Group Insurance – Self-Insurance	338,069.53	207,736.40	38,566.82	584,372.75
Total Personnel Services – Employee Benefits	\$679,037.28	\$467,313.99	\$75,232.97	\$1,221,584.24
300 Purchased Professional and Technical Services				
322 Professional Educational Services – lus	369,811.42	567,026.71	249,742.00	1,186,580.13
329 Professional Educational Services – Other	485,760.02	237,218.80	183,753.59	906,732.41
330 Other Professional Services		408.19		408.19
390 Other Purchased Professional and Technical Services	99.00			99.00
Total Purchased Professional and Technical Services	\$855,670.44	\$804,653.70	\$433,495.59	\$2,093,819.73
500 Other Purchased Services				
561 Tuition To Other School Districts Within the State	30,960.10	116,351.51		147,311.61
562 Tuition To Pennsylvania Charter Schools	225,001.17	782,966.82		1,007,967.99
567 Tuition To Approved Private Schools (APS) and PA Chartered Schools for the Deaf and Blind		22,096.40		22,096.40
568 Tuition To Private Residential Rehabilitative Institutions (PRRI) [In-State] and Detention Centers		13,049.27		13,049.27
569 Tuition – Other	77,850.00	206,808.92		284,658.92
Total Other Purchased Services	\$333,811.27	\$1,141,272.92		\$1,475,084.19
600 Supplies				
610 General Supplies	2,711.70	855.03		3,566.73
640 Books and Periodicals	1,296.00			1,296.00
650 Supplies & Fees – Technology Related	299.98		7,390.00	7,689.98
Total Supplies	\$4,307.68	\$855.03	\$7,390.00	\$12,552.71
800 Other Objects				
810 Dues and Fees	150.00			150.00
Total Other Objects	\$150.00			\$150.00
Total 1200 Special Programs – Elementary / Secondary	\$2,615,754.03	\$2,973,456.18	\$693,345.94	\$6,282,556.15

LEA : 113361503 Columbia Borough SD

Printed 11/7/2023 11:58:09 AM

General Fund (10)

1210 Life Skills Support

	<u>Elementary</u>	<u>Secondary</u>	<u>Federal</u>	<u>Total</u>
100 <u>Personnel Services – Salaries</u>				
100 Personnel Services – Salaries	82,267.93	50,825.13	10,587.04	143,680.10
Total Personnel Services – Salaries	\$82,267.93	\$50,825.13	\$10,587.04	\$143,680.10
200 <u>Personnel Services – Employee Benefits</u>				
210 Group Insurance – Contracted Provider	104.59	54.10	7.80	166.49
220 Social Security Contributions	6,112.05	3,709.44	777.03	10,598.52
230 PSERS Retirement Contributions	30,261.88	19,354.57	1,045.23	50,661.68
260 Workers' Compensation	207.63	124.74	59.16	391.53
270 Group Insurance – Self-Insurance	44,887.66	28,887.11	2,667.61	76,442.38
Total Personnel Services – Employee Benefits	\$81,573.81	\$52,129.96	\$4,556.83	\$138,260.60
300 <u>Purchased Professional and Technical Services</u>				
329 Professional Educational Services – Other	62,804.58	63,104.72		125,909.30
Total Purchased Professional and Technical Services	\$62,804.58	\$63,104.72		\$125,909.30
500 <u>Other Purchased Services</u>				
561 Tuition To Other School Districts Within the State	30,960.10			30,960.10
Total Other Purchased Services	\$30,960.10			\$30,960.10
600 <u>Supplies</u>				
610 General Supplies		183.55		183.55
Total Supplies		\$183.55		\$183.55
Total 1210 Life Skills Support	\$257,606.42	\$166,243.36	\$15,143.87	\$438,993.65

LEA : 113361503 Columbia Borough SD

Printed 11/7/2023 11:58:09 AM

General Fund (10)

1220 Sensory Support	Elementary	Secondary	Federal	Total
100 Personnel Services – Salaries				
100 Personnel Services – Salaries	134,202.00	63,652.26		197,854.26
Total Personnel Services – Salaries	\$134,202.00	\$63,652.26		\$197,854.26
200 Personnel Services – Employee Benefits				
210 Group Insurance – Contracted Provider	144.26	9.00		153.26
220 Social Security Contributions	10,125.99	4,869.29		14,995.28
230 PSERS Retirement Contributions	47,319.40	22,443.85		69,763.25
260 Workers' Compensation	342.48	157.75		500.23
270 Group Insurance – Self-Insurance	44,206.89	1,292.18		45,499.07
Total Personnel Services – Employee Benefits	\$102,139.02	\$28,772.07		\$130,911.09
300 Purchased Professional and Technical Services				
322 Professional Educational Services – lus	32,137.96	18,893.47		51,031.43
330 Other Professional Services		408.19		408.19
Total Purchased Professional and Technical Services	\$32,137.96	\$19,301.66		\$51,439.62
600 Supplies				
610 General Supplies	494.43	343.08		837.51
Total Supplies	\$494.43	\$343.08		\$837.51
Total 1220 Sensory Support	\$268,973.41	\$112,069.07		\$381,042.48

LEA : 113361503 Columbia Borough SD

Printed 11/7/2023 11:58:09 AM

General Fund (10)

1230 Emotional Support

	<u>Elementary</u>	<u>Secondary</u>	<u>Federal</u>	<u>Total</u>
100 <u>Personnel Services – Salaries</u>				
100 Personnel Services – Salaries	176,521.92	174,382.18	99,394.49	450,298.59
Total Personnel Services – Salaries	\$176,521.92	\$174,382.18	\$99,394.49	\$450,298.59
200 <u>Personnel Services – Employee Benefits</u>				
210 Group Insurance – Contracted Provider	225.08	137.36	57.00	419.44
220 Social Security Contributions	13,210.91	12,876.83	7,508.89	33,596.63
230 PSERS Retirement Contributions	72,590.11	71,386.11	14,531.48	158,507.70
260 Workers' Compensation	439.89	429.26	551.85	1,421.00
270 Group Insurance – Self-Insurance	129,694.39	93,162.54	28,281.58	251,138.51
Total Personnel Services – Employee Benefits	\$216,160.38	\$177,992.10	\$50,930.80	\$445,083.28
300 <u>Purchased Professional and Technical Services</u>				
322 Professional Educational Services – lus	302,302.46	400,718.24	248,672.00	951,692.70
329 Professional Educational Services – Other	323,138.18	132,158.27		455,296.45
Total Purchased Professional and Technical Services	\$625,440.64	\$532,876.51	\$248,672.00	\$1,406,989.15
500 <u>Other Purchased Services</u>				
561 Tuition To Other School Districts Within the State		101,421.71		101,421.71
569 Tuition – Other	30,510.00	191,943.16		222,453.16
Total Other Purchased Services	\$30,510.00	\$293,364.87		\$323,874.87
600 <u>Supplies</u>				
610 General Supplies	1,402.05	128.08		1,530.13
Total Supplies	\$1,402.05	\$128.08		\$1,530.13
800 <u>Other Objects</u>				
810 Dues and Fees	150.00			150.00
Total Other Objects	\$150.00			\$150.00
Total 1230 Emotional Support	\$1,050,184.99	\$1,178,743.74	\$398,997.29	\$2,627,926.02

LEA : 113361503 Columbia Borough SD

Printed 11/7/2023 11:58:09 AM

General Fund (10)				
1240 Academic Support	<u>Elementary</u>	<u>Secondary</u>	<u>Federal</u>	<u>Total</u>
100 <u>Personnel Services – Salaries</u>				
100 Personnel Services – Salaries	349,785.51	270,500.97	67,245.85	687,532.33
Total Personnel Services – Salaries	\$349,785.51	\$270,500.97	\$67,245.85	\$687,532.33
200 <u>Personnel Services – Employee Benefits</u>				
210 Group Insurance – Contracted Provider	396.72	285.82	37.20	719.74
220 Social Security Contributions	26,316.64	20,503.55	5,076.01	51,896.20
230 PSERS Retirement Contributions	132,295.63	102,572.31	6,639.03	241,506.97
260 Workers' Compensation	874.49	663.61	375.47	1,913.57
270 Group Insurance – Self-Insurance	119,280.59	84,394.57	7,617.63	211,292.79
Total Personnel Services – Employee Benefits	\$279,164.07	\$208,419.86	\$19,745.34	\$507,329.27
300 <u>Purchased Professional and Technical Services</u>				
322 Professional Educational Services – lus		80,081.00		80,081.00
329 Professional Educational Services – Other	99,817.26	17,926.57		117,743.83
390 Other Purchased Professional and Technical Services	99.00			99.00
Total Purchased Professional and Technical Services	\$99,916.26	\$98,007.57		\$197,923.83
500 <u>Other Purchased Services</u>				
561 Tuition To Other School Districts Within the State		6,833.43		6,833.43
562 Tuition To Pennsylvania Charter Schools	225,001.17	782,966.82		1,007,967.99
569 Tuition – Other		7,565.76		7,565.76
Total Other Purchased Services	\$225,001.17	\$797,366.01		\$1,022,367.18
600 <u>Supplies</u>				
610 General Supplies	815.22	200.32		1,015.54
640 Books and Periodicals	1,296.00			1,296.00
Total Supplies	\$2,111.22	\$200.32		\$2,311.54
Total 1240 Academic Support	\$955,978.23	\$1,374,494.73	\$86,991.19	\$2,417,464.15

LEA : 113361503 Columbia Borough SD

Printed 11/7/2023 11:58:09 AM

General Fund (10)

1241 Learning Support – Public	Elementary	Secondary	Federal	Total
100 Personnel Services – Salaries				
100 Personnel Services – Salaries	343,701.51	270,500.97	67,245.85	681,448.33
Total Personnel Services – Salaries	\$343,701.51	\$270,500.97	\$67,245.85	\$681,448.33
200 Personnel Services – Employee Benefits				
210 Group Insurance – Contracted Provider	389.51	281.32	37.20	708.03
220 Social Security Contributions	25,855.79	20,503.51	5,076.01	51,435.31
230 PSERS Retirement Contributions	130,150.39	102,572.33	6,639.03	239,361.75
260 Workers' Compensation	859.49	664.32	375.47	1,899.28
270 Group Insurance – Self-Insurance	117,070.36	78,035.39	7,617.63	202,723.38
Total Personnel Services – Employee Benefits	\$274,325.54	\$202,056.87	\$19,745.34	\$496,127.75
300 Purchased Professional and Technical Services				
322 Professional Educational Services – lus		80,081.00		80,081.00
329 Professional Educational Services – Other	99,817.26	17,926.57		117,743.83
390 Other Purchased Professional and Technical Services	99.00			99.00
Total Purchased Professional and Technical Services	\$99,916.26	\$98,007.57		\$197,923.83
500 Other Purchased Services				
561 Tuition To Other School Districts Within the State		6,833.43		6,833.43
562 Tuition To Pennsylvania Charter Schools	225,001.17	782,966.82		1,007,967.99
569 Tuition – Other		7,565.76		7,565.76
Total Other Purchased Services	\$225,001.17	\$797,366.01		\$1,022,367.18
600 Supplies				
610 General Supplies	815.22	200.32		1,015.54
640 Books and Periodicals	1,296.00			1,296.00
Total Supplies	\$2,111.22	\$200.32		\$2,311.54
Total 1241 Learning Support – Public	\$945,055.70	\$1,368,131.74	\$86,991.19	\$2,400,178.63

LEA : 113361503 Columbia Borough SD

Printed 11/7/2023 11:58:09 AM

General Fund (10)

1243 Gifted Support	<u>Elementary</u>	<u>Secondary</u>	<u>Federal</u>	<u>Total</u>
100 <u>Personnel Services – Salaries</u>				
100 Personnel Services – Salaries	6,084.00			6,084.00
Total Personnel Services – Salaries	\$6,084.00			\$6,084.00
200 <u>Personnel Services – Employee Benefits</u>				
210 Group Insurance – Contracted Provider	7.21	4.50		11.71
220 Social Security Contributions	460.85	0.04		460.89
230 PSERS Retirement Contributions	2,145.24	(0.02)		2,145.22
260 Workers' Compensation	15.00	(0.71)		14.29
270 Group Insurance – Self-Insurance	2,210.23	6,359.18		8,569.41
Total Personnel Services – Employee Benefits	\$4,838.53	\$6,362.99		\$11,201.52
Total 1243 Gifted Support	\$10,922.53	\$6,362.99		\$17,285.52

General Fund (10)

1270 Multi-Handicapped Support	<u>Elementary</u>	<u>Secondary</u>	<u>Federal</u>	<u>Total</u>
300 <u>Purchased Professional and Technical Services</u>				
322 Professional Educational Services – Ius		45,620.00		45,620.00
329 Professional Educational Services – Other		24,029.24		24,029.24
Total Purchased Professional and Technical Services		\$69,649.24		\$69,649.24
600 <u>Supplies</u>				
650 Supplies & Fees – Technology Related	299.98			299.98
Total Supplies	\$299.98			\$299.98
Total 1270 Multi-Handicapped Support	\$299.98	\$69,649.24		\$69,949.22

LEA : 113361503 Columbia Borough SD

Printed 11/7/2023 11:58:09 AM

General Fund (10)

1280 Early Intervention Support	<u>Elementary</u>	<u>Secondary</u>	<u>Federal</u>	<u>Total</u>
300 <u>Purchased Professional and Technical Services</u>				
322 Professional Educational Services – lus	35,371.00		1,070.00	36,441.00
Total Purchased Professional and Technical Services	\$35,371.00		\$1,070.00	\$36,441.00
Total 1280 Early Intervention Support	\$35,371.00		\$1,070.00	\$36,441.00

LEA : 113361503 Columbia Borough SD

Printed 11/7/2023 11:58:09 AM

General Fund (10)				
1290 Special Programs - Other Support	<u>Elementary</u>	<u>Secondary</u>	<u>Federal</u>	<u>Total</u>
300 <u>Purchased Professional and Technical Services</u>				
322 Professional Educational Services – Ius		21,714.00		21,714.00
329 Professional Educational Services – Other			183,753.59	183,753.59
Total Purchased Professional and Technical Services		\$21,714.00	\$183,753.59	\$205,467.59
500 <u>Other Purchased Services</u>				
561 Tuition To Other School Districts Within the State		8,096.37		8,096.37
567 Tuition To Approved Private Schools (APS) and PA Chartered Schools for the Deaf and Blind		22,096.40		22,096.40
568 Tuition To Private Residential Rehabilitative Institutions (PRRI) [In-State] and Detention Centers		13,049.27		13,049.27
569 Tuition – Other	47,340.00	7,300.00		54,640.00
Total Other Purchased Services	\$47,340.00	\$50,542.04		\$97,882.04
600 <u>Supplies</u>				
650 Supplies & Fees – Technology Related			7,390.00	7,390.00
Total Supplies			\$7,390.00	\$7,390.00
Total 1290 Special Programs - Other Support	\$47,340.00	\$72,256.04	\$191,143.59	\$310,739.63

LEA : 113361503 Columbia Borough SD

Printed 11/7/2023 11:58:09 AM

General Fund (10)

1300 Vocational Education

500 Other Purchased Services

	<u>Elementary</u>	<u>Secondary</u>	<u>Federal</u>	<u>Total</u>
564 Tuition To Career and Technology Centers		438,921.18		438,921.18
Total Other Purchased Services		\$438,921.18		\$438,921.18
Total 1300 Vocational Education		\$438,921.18		\$438,921.18

LEA : 113361503 Columbia Borough SD

Printed 11/7/2023 11:58:09 AM

General Fund (10)

1400 Other Instructional Programs – Elementary / Secondary	Elementary	Secondary	Federal	Total
100 Personnel Services – Salaries				
100 Personnel Services – Salaries	2,624.50	2,552.00	24,444.35	29,620.85
Total Personnel Services – Salaries	\$2,624.50	\$2,552.00	\$24,444.35	\$29,620.85
200 Personnel Services – Employee Benefits				
220 Social Security Contributions	192.95	193.76	1,842.86	2,229.57
230 PSERS Retirement Contributions	933.07	907.49	2,513.82	4,354.38
260 Workers’ Compensation	14.86	6.33	147.39	168.58
Total Personnel Services – Employee Benefits	\$1,140.88	\$1,107.58	\$4,504.07	\$6,752.53
300 Purchased Professional and Technical Services				
322 Professional Educational Services – Ius		24,558.93		24,558.93
329 Professional Educational Services – Other	11,815.16	18,997.68	1,070.74	31,883.58
390 Other Purchased Professional and Technical Services			762.50	762.50
Total Purchased Professional and Technical Services	\$11,815.16	\$43,556.61	\$1,833.24	\$57,205.01
500 Other Purchased Services				
561 Tuition To Other School Districts Within the State	78.14	67.75		145.89
569 Tuition – Other		14,570.00		14,570.00
Total Other Purchased Services	\$78.14	\$14,637.75		\$14,715.89
600 Supplies				
610 General Supplies	1,055.53		94.27	1,149.80
630 Food		14.25		14.25
650 Supplies & Fees – Technology Related			67.50	67.50
Total Supplies	\$1,055.53	\$14.25	\$161.77	\$1,231.55
Total 1400 Other Instructional Programs – Elementary / Secondary	\$16,714.21	\$61,868.19	\$30,943.43	\$109,525.83

LEA : 113361503 Columbia Borough SD

Printed 11/7/2023 11:58:09 AM

General Fund (10)

1420 Summer School	Elementary	Secondary	Federal	Total
100 <u>Personnel Services – Salaries</u>				
100 Personnel Services – Salaries	2,189.50		22,421.60	24,611.10
Total Personnel Services – Salaries	\$2,189.50		\$22,421.60	\$24,611.10
200 <u>Personnel Services – Employee Benefits</u>				
220 Social Security Contributions	160.94		1,690.06	1,851.00
230 PSERS Retirement Contributions	772.02		2,296.31	3,068.33
260 Workers’ Compensation	13.78		136.16	149.94
Total Personnel Services – Employee Benefits	\$946.74		\$4,122.53	\$5,069.27
300 <u>Purchased Professional and Technical Services</u>				
329 Professional Educational Services – Other	11,603.00		1,070.74	12,673.74
Total Purchased Professional and Technical Services	\$11,603.00		\$1,070.74	\$12,673.74
600 <u>Supplies</u>				
610 General Supplies	1,055.53			1,055.53
Total Supplies	\$1,055.53			\$1,055.53
Total 1420 Summer School	\$15,794.77		\$27,614.87	\$43,409.64

LEA : 113361503 Columbia Borough SD

Printed 11/7/2023 11:58:09 AM

General Fund (10)

1430 Homebound Instruction	<u>Elementary</u>	<u>Secondary</u>	<u>Federal</u>	<u>Total</u>
100 <u>Personnel Services – Salaries</u>				
100 Personnel Services – Salaries	435.00	1,827.00		2,262.00
Total Personnel Services – Salaries	\$435.00	\$1,827.00		\$2,262.00
200 <u>Personnel Services – Employee Benefits</u>				
220 Social Security Contributions	32.01	139.47		171.48
230 PSERS Retirement Contributions	153.38	644.19		797.57
260 Workers’ Compensation	1.08	4.53		5.61
Total Personnel Services – Employee Benefits	\$186.47	\$788.19		\$974.66
300 <u>Purchased Professional and Technical Services</u>				
329 Professional Educational Services – Other	212.16	5,697.68		5,909.84
Total Purchased Professional and Technical Services	\$212.16	\$5,697.68		\$5,909.84
Total 1430 Homebound Instruction	\$833.63	\$8,312.87		\$9,146.50

LEA : 113361503 Columbia Borough SD

Printed 11/7/2023 11:58:09 AM

General Fund (10)

1440 Alternative Regular Education Programs	<u>Elementary</u>	<u>Secondary</u>	<u>Federal</u>	<u>Total</u>
300 <u>Purchased Professional and Technical Services</u>				
322 Professional Educational Services – lus		24,558.93		24,558.93
Total Purchased Professional and Technical Services		\$24,558.93		\$24,558.93
500 <u>Other Purchased Services</u>				
561 Tuition To Other School Districts Within the State	78.14	67.75		145.89
569 Tuition – Other		14,570.00		14,570.00
Total Other Purchased Services	\$78.14	\$14,637.75		\$14,715.89
Total 1440 Alternative Regular Education Programs	\$78.14	\$39,196.68		\$39,274.82

LEA : 113361503 Columbia Borough SD

Printed 11/7/2023 11:58:09 AM

General Fund (10)

1441 Adjudicated / Court-Placed Programs	<u>Elementary</u>	<u>Secondary</u>	<u>Federal</u>	<u>Total</u>
500 <u>Other Purchased Services</u>				
561 Tuition To Other School Districts Within the State	78.14	67.75		145.89
Total Other Purchased Services	\$78.14	\$67.75		\$145.89
Total 1441 Adjudicated / Court-Placed Programs	\$78.14	\$67.75		\$145.89

LEA : 113361503 Columbia Borough SD

Printed 11/7/2023 11:58:09 AM

General Fund (10)

1442 Alternative Education Programs	<u>Elementary</u>	<u>Secondary</u>	<u>Federal</u>	<u>Total</u>
300 <u>Purchased Professional and Technical Services</u>				
322 Professional Educational Services – lus		24,558.93		24,558.93
Total Purchased Professional and Technical Services		\$24,558.93		\$24,558.93
500 <u>Other Purchased Services</u>				
569 Tuition – Other		14,570.00		14,570.00
Total Other Purchased Services		\$14,570.00		\$14,570.00
Total 1442 Alternative Education Programs		\$39,128.93		\$39,128.93

LEA : 113361503 Columbia Borough SD

Printed 11/7/2023 11:58:09 AM

General Fund (10)

1450 Instructional Programs Outside the Established School Day	<u>Elementary</u>	<u>Secondary</u>	<u>Federal</u>	<u>Total</u>
100 <u>Personnel Services – Salaries</u>				
100 Personnel Services – Salaries			1,892.25	1,892.25
Total Personnel Services – Salaries			\$1,892.25	\$1,892.25
200 <u>Personnel Services – Employee Benefits</u>				
220 Social Security Contributions			143.62	143.62
230 PSERS Retirement Contributions			186.83	186.83
260 Workers’ Compensation			10.51	10.51
Total Personnel Services – Employee Benefits			\$340.96	\$340.96
600 <u>Supplies</u>				
610 General Supplies			94.27	94.27
630 Food		14.25		14.25
Total Supplies		\$14.25	\$94.27	\$108.52
Total 1450 Instructional Programs Outside the Established School Day		\$14.25	\$2,327.48	\$2,341.73

LEA : 113361503 Columbia Borough SD

Printed 11/7/2023 11:58:09 AM

General Fund (10)

1490 Additional Other Instructional Programs	<u>Elementary</u>	<u>Secondary</u>	<u>Federal</u>	<u>Total</u>
100 <u>Personnel Services – Salaries</u>				
100 Personnel Services – Salaries		725.00	130.50	855.50
Total Personnel Services – Salaries		\$725.00	\$130.50	\$855.50
200 <u>Personnel Services – Employee Benefits</u>				
220 Social Security Contributions		54.29	9.18	63.47
230 PSERS Retirement Contributions	7.67	263.30	30.68	301.65
260 Workers’ Compensation		1.80	0.72	2.52
Total Personnel Services – Employee Benefits	\$7.67	\$319.39	\$40.58	\$367.64
300 <u>Purchased Professional and Technical Services</u>				
329 Professional Educational Services – Other		13,300.00		13,300.00
390 Other Purchased Professional and Technical Services			762.50	762.50
Total Purchased Professional and Technical Services		\$13,300.00	\$762.50	\$14,062.50
600 <u>Supplies</u>				
650 Supplies & Fees – Technology Related			67.50	67.50
Total Supplies			\$67.50	\$67.50
Total 1490 Additional Other Instructional Programs	\$7.67	\$14,344.39	\$1,001.08	\$15,353.14

LEA : 113361503 Columbia Borough SD

Printed 11/7/2023 11:58:09 AM

General Fund (10)

1500 Nonpublic School Programs

	<u>Elementary</u>	<u>Secondary</u>	<u>Federal</u>	<u>Total</u>
300 <u>Purchased Professional and Technical Services</u>				
322 Professional Educational Services – Ius			21,297.64	21,297.64
360 Employee Training and Development Services			1,200.00	1,200.00
Total Purchased Professional and Technical Services			\$22,497.64	\$22,497.64
600 <u>Supplies</u>				
610 General Supplies			2,124.31	2,124.31
640 Books and Periodicals			188.64	188.64
650 Supplies & Fees – Technology Related			5,349.38	5,349.38
Total Supplies			\$7,662.33	\$7,662.33
Total 1500 Nonpublic School Programs			\$30,159.97	\$30,159.97

LEA : 113361503 Columbia Borough SD

Printed 11/7/2023 11:58:12 AM

General Fund (10)

2000 Support Services		Total
100 <u>Personnel Services – Salaries</u>		
100 Personnel Services – Salaries		2,795,019.48
Total Personnel Services – Salaries		\$2,795,019.48
200 <u>Personnel Services – Employee Benefits</u>		
210 Group Insurance – Contracted Provider		5,382.71
220 Social Security Contributions		258,769.10
230 PSERS Retirement Contributions		1,125,588.64
240 Tuition Reimbursement		141,669.68
260 Workers' Compensation		13,920.08
270 Group Insurance – Self-Insurance		1,220,561.51
Total Personnel Services – Employee Benefits		\$2,765,891.72
300 <u>Purchased Professional and Technical Services</u>		
322 Professional Educational Services – Ius		89,018.52
330 Other Professional Services		681,923.82
340 Technical Services		262,380.18
350 Security / Safety Services		47,002.06
360 Employee Training and Development Services		19,194.00
390 Other Purchased Professional and Technical Services		91,168.85
Total Purchased Professional and Technical Services		\$1,190,687.43
400 <u>Purchased Property Services</u>		
410 Cleaning Services		409,863.05
420 Utility Services		34,486.59
430 Repairs and Maintenance Services		248,537.46
440 Rentals		14,625.63
450 Construction Services		39,884.99
460 Extermination Services		5,384.19
Total Purchased Property Services		\$752,781.91
500 <u>Other Purchased Services</u>		
513 Contracted Carriers		411,686.87
516 Student Transportation Services From the IU		617.49
520 Insurance – General		455.00
523 General Property and Liability Insurance		144,061.00
530 Communications		85,789.65
549 Other Advertising/Public Relations		9,679.26
550 Printing and Binding		20,049.49
580 Travel		16,874.15
595 IU Payments By Withholding		5,008.71
Total Other Purchased Services		\$694,221.62
600 <u>Supplies</u>		
610 General Supplies		332,600.84
620 Energy		363,809.97
630 Food		25,931.89
640 Books and Periodicals		12,206.39
650 Supplies & Fees – Technology Related		294,373.34

LEA : 113361503 Columbia Borough SD

Printed 11/7/2023 11:58:12 AM

General Fund (10)

2000 Support Services

	<u>Total</u>
Total Supplies	\$1,028,922.43
700 <u>Property</u>	
752 Capital Equipment – Original and Additional	61,933.00
756 Capitalized Technology Equipment – Original	27,567.82
758 Capitalized Technology Software - Original	583.59
762 Capitalized Equipment - Replacement	341,319.99
766 Capitalized Technology Equipment – Replacement	42,742.46
Total Property	\$474,146.86
800 <u>Other Objects</u>	
810 Dues and Fees	34,070.99
Total Other Objects	\$34,070.99
Total 2000 Support Services	\$9,735,742.44

LEA : 113361503 Columbia Borough SD

Printed 11/7/2023 11:58:12 AM

General Fund (10)

2100 Support Services – Students	Elementary	Secondary	Federal	Total
100 Personnel Services – Salaries				
100 Personnel Services – Salaries	3,330.85	25,475.35	532,145.19	614,729.98
Total Personnel Services – Salaries	\$3,330.85	\$25,475.35	\$532,145.19	\$614,729.98
200 Personnel Services – Employee Benefits				
210 Group Insurance – Contracted Provider		66.12	249.00	417.31
220 Social Security Contributions	253.30	1,937.55	39,185.18	45,278.93
230 PSERS Retirement Contributions	63,377.21	60,259.54	56,276.00	215,312.11
260 Workers' Compensation	8.26	63.12	2,956.43	3,162.04
270 Group Insurance – Self-Insurance		26,412.49	94,637.82	152,388.73
Total Personnel Services – Employee Benefits	\$63,638.77	\$88,738.82	\$193,304.43	\$416,559.12
300 Purchased Professional and Technical Services				
322 Professional Educational Services – lus		17,328.75	54,127.47	71,456.22
330 Other Professional Services	80,267.80	30,232.20	64,744.91	175,244.91
390 Other Purchased Professional and Technical Services	10,949.63	1,100.00	46,410.00	58,459.63
Total Purchased Professional and Technical Services	\$91,217.43	\$48,660.95	\$165,282.38	\$305,160.76
500 Other Purchased Services				
530 Communications				19.23
549 Other Advertising/Public Relations				1,964.41
550 Printing and Binding	82.55			82.55
580 Travel	72.07	62.49		134.56
Total Other Purchased Services	\$154.62	\$62.49		\$2,200.75
600 Supplies				
610 General Supplies	1,590.68	3,132.64		5,426.37
630 Food		2,330.17		2,457.73
640 Books and Periodicals		234.00		234.00
650 Supplies & Fees – Technology Related	9,506.74	7,591.89		18,583.69
Total Supplies	\$11,097.42	\$13,288.70		\$26,701.79
800 Other Objects				
810 Dues and Fees	21.42	418.58		440.00
Total Other Objects	\$21.42	\$418.58		\$440.00
Total 2100 Support Services – Students	\$169,460.51	\$176,644.89	\$890,732.00	\$1,365,792.40

LEA : 113361503 Columbia Borough SD

Printed 11/7/2023 11:58:12 AM

General Fund (10)				
2120 Guidance Services	<u>Elementary</u>	<u>Secondary</u>	<u>Federal</u>	<u>Total</u>
100 <u>Personnel Services – Salaries</u>				
100 Personnel Services – Salaries	3,330.85	25,417.35	287,320.41	316,068.61
Total Personnel Services – Salaries	\$3,330.85	\$25,417.35	\$287,320.41	\$316,068.61
200 <u>Personnel Services – Employee Benefits</u>				
210 Group Insurance – Contracted Provider		66.12	141.00	207.12
220 Social Security Contributions	253.30	1,933.26	21,640.96	23,827.52
230 PSERS Retirement Contributions	41,304.91	39,144.69	30,537.62	110,987.22
260 Workers' Compensation	8.26	62.98	1,599.02	1,670.26
270 Group Insurance – Self-Insurance		26,412.49	36,098.77	62,511.26
Total Personnel Services – Employee Benefits	\$41,566.47	\$67,619.54	\$90,017.37	\$199,203.38
300 <u>Purchased Professional and Technical Services</u>				
322 Professional Educational Services – lus		17,328.75	54,127.47	71,456.22
330 Other Professional Services	267.80	30,232.20		30,500.00
Total Purchased Professional and Technical Services	\$267.80	\$47,560.95	\$54,127.47	\$101,956.22
500 <u>Other Purchased Services</u>				
550 Printing and Binding	82.55			82.55
Total Other Purchased Services	\$82.55			\$82.55
600 <u>Supplies</u>				
610 General Supplies	1,186.63	2,584.03		3,770.66
630 Food		2,330.17		2,330.17
640 Books and Periodicals		234.00		234.00
650 Supplies & Fees – Technology Related	8,072.48	6,348.29		14,420.77
Total Supplies	\$9,259.11	\$11,496.49		\$20,755.60
800 <u>Other Objects</u>				
810 Dues and Fees		400.00		400.00
Total Other Objects		\$400.00		\$400.00
Total 2120 Guidance Services	\$54,506.78	\$152,494.33	\$431,465.25	\$638,466.36

LEA : 113361503 Columbia Borough SD

Printed 11/7/2023 11:58:12 AM

General Fund (10)

2130 Attendance Services

Elementary Secondary Federal Total

100 <u>Personnel Services – Salaries</u>				
100 Personnel Services – Salaries				28,764.48
Total Personnel Services – Salaries				\$28,764.48
200 <u>Personnel Services – Employee Benefits</u>				
210 Group Insurance – Contracted Provider				66.12
220 Social Security Contributions				2,135.68
230 PSERS Retirement Contributions				9,944.92
260 Workers' Compensation				71.83
270 Group Insurance – Self-Insurance				20,286.63
Total Personnel Services – Employee Benefits				\$32,505.18
600 <u>Supplies</u>				
610 General Supplies				177.86
Total Supplies				\$177.86
Total 2130 Attendance Services				\$61,447.52

LEA : 113361503 Columbia Borough SD

Printed 11/7/2023 11:58:12 AM

General Fund (10)

2140 Psychological Services	Elementary	Secondary	Federal	Total
100 <u>Personnel Services – Salaries</u>				
100 Personnel Services – Salaries		58.00	174,423.86	174,481.86
Total Personnel Services – Salaries		\$58.00	\$174,423.86	\$174,481.86
200 <u>Personnel Services – Employee Benefits</u>				
210 Group Insurance – Contracted Provider			72.00	72.00
220 Social Security Contributions		4.29	12,538.30	12,542.59
230 PSERS Retirement Contributions	22,072.30	21,114.85	18,335.22	61,522.37
260 Workers' Compensation		0.14	967.51	967.65
270 Group Insurance – Self-Insurance			38,697.88	38,697.88
Total Personnel Services – Employee Benefits	\$22,072.30	\$21,119.28	\$70,610.91	\$113,802.49
300 <u>Purchased Professional and Technical Services</u>				
390 Other Purchased Professional and Technical Services	1,899.63	1,100.00		2,999.63
Total Purchased Professional and Technical Services	\$1,899.63	\$1,100.00		\$2,999.63
500 <u>Other Purchased Services</u>				
580 Travel	72.07	62.49		134.56
Total Other Purchased Services	\$72.07	\$62.49		\$134.56
600 <u>Supplies</u>				
610 General Supplies	404.05	350.34		754.39
650 Supplies & Fees – Technology Related	1,434.26	1,243.60		2,677.86
Total Supplies	\$1,838.31	\$1,593.94		\$3,432.25
800 <u>Other Objects</u>				
810 Dues and Fees	21.42	18.58		40.00
Total Other Objects	\$21.42	\$18.58		\$40.00
Total 2140 Psychological Services	\$25,903.73	\$23,952.29	\$245,034.77	\$294,890.79

LEA : 113361503 Columbia Borough SD

Printed 11/7/2023 11:58:12 AM

General Fund (10)

2160 Social Work Services	<u>Elementary</u>	<u>Secondary</u>	<u>Federal</u>	<u>Total</u>
100 <u>Personnel Services – Salaries</u>				
100 Personnel Services – Salaries			70,400.92	70,400.92
Total Personnel Services – Salaries			\$70,400.92	\$70,400.92
200 <u>Personnel Services – Employee Benefits</u>				
210 Group Insurance – Contracted Provider			36.00	36.00
220 Social Security Contributions			5,005.92	5,005.92
230 PSERS Retirement Contributions			7,403.16	24,664.75
260 Workers' Compensation			389.90	389.90
270 Group Insurance – Self-Insurance			19,841.17	19,841.17
Total Personnel Services – Employee Benefits			\$32,676.15	\$49,937.74
600 <u>Supplies</u>				
610 General Supplies				525.19
Total Supplies				\$525.19
Total 2160 Social Work Services			\$103,077.07	\$120,863.85

LEA : 113361503 Columbia Borough SD

Printed 11/7/2023 11:58:12 AM

General Fund (10)

2170 Student Accounting Services

Elementary Secondary Federal Total

100 <u>Personnel Services – Salaries</u>				
100 Personnel Services – Salaries				25,014.11
Total Personnel Services – Salaries				\$25,014.11
200 <u>Personnel Services – Employee Benefits</u>				
210 Group Insurance – Contracted Provider				36.07
220 Social Security Contributions				1,767.22
230 PSERS Retirement Contributions				8,192.85
260 Workers' Compensation				62.40
270 Group Insurance – Self-Insurance				11,051.79
Total Personnel Services – Employee Benefits				\$21,110.33
500 <u>Other Purchased Services</u>				
530 Communications				19.23
549 Other Advertising/Public Relations				1,964.41
Total Other Purchased Services				\$1,983.64
600 <u>Supplies</u>				
630 Food				127.56
650 Supplies & Fees – Technology Related				1,485.06
Total Supplies				\$1,612.62
Total 2170 Student Accounting Services				\$49,720.70

LEA : 113361503 Columbia Borough SD

Printed 11/7/2023 11:58:12 AM

General Fund (10)

2190 Other Student Services	<u>Elementary</u>	<u>Secondary</u>	<u>Federal</u>	<u>Total</u>
300 <u>Purchased Professional and Technical Services</u>				
330 Other Professional Services	80,000.00		64,744.91	144,744.91
390 Other Purchased Professional and Technical Services	9,050.00		46,410.00	55,460.00
Total Purchased Professional and Technical Services	\$89,050.00		\$111,154.91	\$200,204.91
600 <u>Supplies</u>				
610 General Supplies		198.27		198.27
Total Supplies		\$198.27		\$198.27
Total 2190 Other Student Services	\$89,050.00	\$198.27	\$111,154.91	\$200,403.18

LEA : 113361503 Columbia Borough SD

Printed 11/7/2023 11:58:12 AM

General Fund (10)

2200 Support Services – Instructional Staff	Elementary	Secondary	Federal	Total
100 <u>Personnel Services – Salaries</u>				
100 Personnel Services – Salaries	163,951.45	202,720.05	357,101.88	723,773.38
Total Personnel Services – Salaries	\$163,951.45	\$202,720.05	\$357,101.88	\$723,773.38
200 <u>Personnel Services – Employee Benefits</u>				
210 Group Insurance – Contracted Provider	435.04	421.83	814.92	1,671.79
220 Social Security Contributions	11,751.45	14,901.89	78,705.03	105,358.37
230 PSERS Retirement Contributions	190,613.00	107,083.24	121,125.93	418,822.17
240 Tuition Reimbursement	35,083.35	54,342.38		89,425.73
260 Workers' Compensation	405.87	501.68	5,803.22	6,710.77
270 Group Insurance – Self-Insurance	85,877.56	76,024.96	41,362.41	203,264.93
Total Personnel Services – Employee Benefits	\$324,166.27	\$253,275.98	\$247,811.51	\$825,253.76
300 <u>Purchased Professional and Technical Services</u>				
322 Professional Educational Services – Ius	374.92	325.08		700.00
330 Other Professional Services	20,988.89	24,940.54		45,929.43
390 Other Purchased Professional and Technical Services			4,123.00	4,123.00
Total Purchased Professional and Technical Services	\$21,363.81	\$25,265.62	\$4,123.00	\$50,752.43
500 <u>Other Purchased Services</u>				
530 Communications	55.88	48.46		104.34
550 Printing and Binding	415.63	360.37		776.00
580 Travel	387.55	162.62		550.17
Total Other Purchased Services	\$859.06	\$571.45		\$1,430.51
600 <u>Supplies</u>				
610 General Supplies	52,659.44	5,959.45		58,618.89
630 Food	1,645.98	1,427.17		3,073.15
640 Books and Periodicals	4,897.49	5,615.75	1,318.00	11,831.24
650 Supplies & Fees – Technology Related	7,883.58	6,016.70		13,900.28
Total Supplies	\$67,086.49	\$19,019.07	\$1,318.00	\$87,423.56
700 <u>Property</u>				
758 Capitalized Technology Software - Original	312.57	271.02		583.59
Total Property	\$312.57	\$271.02		\$583.59
800 <u>Other Objects</u>				
810 Dues and Fees	741.27	642.73		1,384.00
Total Other Objects	\$741.27	\$642.73		\$1,384.00
Total 2200 Support Services – Instructional Staff	\$578,480.92	\$501,765.92	\$610,354.39	\$1,690,601.23

LEA : 113361503 Columbia Borough SD

Printed 11/7/2023 11:58:12 AM

General Fund (10)

2220 Technology Support Services	<u>Elementary</u>	<u>Secondary</u>	<u>Federal</u>	<u>Total</u>
100 <u>Personnel Services – Salaries</u>				
100 Personnel Services – Salaries	500.00			500.00
Total Personnel Services – Salaries	\$500.00			\$500.00
200 <u>Personnel Services – Employee Benefits</u>				
220 Social Security Contributions	38.14			38.14
230 PSERS Retirement Contributions	176.30			176.30
260 Workers’ Compensation	1.24			1.24
Total Personnel Services – Employee Benefits	\$215.68			\$215.68
Total 2220 Technology Support Services	\$715.68			\$715.68

LEA : 113361503 Columbia Borough SD

Printed 11/7/2023 11:58:12 AM

General Fund (10)

2240 Computer-Assisted Instruction Support Services	<u>Elementary</u>	<u>Secondary</u>	<u>Federal</u>	<u>Total</u>
100 <u>Personnel Services – Salaries</u>				
100 Personnel Services – Salaries	743.60	28,097.16	10,189.65	39,030.41
Total Personnel Services – Salaries	\$743.60	\$28,097.16	\$10,189.65	\$39,030.41
200 <u>Personnel Services – Employee Benefits</u>				
210 Group Insurance – Contracted Provider		36.00	12.00	48.00
220 Social Security Contributions	56.73	2,145.17	777.81	2,979.71
230 PSERS Retirement Contributions	1,968.97	9,697.29	1,361.74	13,028.00
260 Workers' Compensation	1.84	69.63	56.85	128.32
270 Group Insurance – Self-Insurance		23,536.13	3,836.75	27,372.88
Total Personnel Services – Employee Benefits	\$2,027.54	\$35,484.22	\$6,045.15	\$43,556.91
Total 2240 Computer-Assisted Instruction Support Services	\$2,771.14	\$63,581.38	\$16,234.80	\$82,587.32

LEA : 113361503 Columbia Borough SD

Printed 11/7/2023 11:58:12 AM

General Fund (10)				
2250 School Library Services	<u>Elementary</u>	<u>Secondary</u>	<u>Federal</u>	<u>Total</u>
100 <u>Personnel Services – Salaries</u>				
100 Personnel Services – Salaries	57,439.03	65,797.10		123,236.13
Total Personnel Services – Salaries	\$57,439.03	\$65,797.10		\$123,236.13
200 <u>Personnel Services – Employee Benefits</u>				
210 Group Insurance – Contracted Provider	64.92	64.92		129.84
220 Social Security Contributions	4,015.54	4,812.64		8,828.18
230 PSERS Retirement Contributions	20,252.90	23,200.15		43,453.05
260 Workers' Compensation	141.24	161.78		303.02
270 Group Insurance – Self-Insurance	48,284.51	19,893.21		68,177.72
Total Personnel Services – Employee Benefits	\$72,759.11	\$48,132.70		\$120,891.81
600 <u>Supplies</u>				
610 General Supplies	51,375.23	10.56		51,385.79
640 Books and Periodicals	4,102.00	4,986.36		9,088.36
650 Supplies & Fees – Technology Related	1,319.25	325.00		1,644.25
Total Supplies	\$56,796.48	\$5,321.92		\$62,118.40
Total 2250 School Library Services	\$186,994.62	\$119,251.72		\$306,246.34

LEA : 113361503 Columbia Borough SD

Printed 11/7/2023 11:58:12 AM

General Fund (10)

2260 Instruction and Curriculum Development Services	Elementary	Secondary	Federal	Total
100 Personnel Services – Salaries				
100 Personnel Services – Salaries	104,818.82	108,796.79	346,912.23	560,527.84
Total Personnel Services – Salaries	\$104,818.82	\$108,796.79	\$346,912.23	\$560,527.84
200 Personnel Services – Employee Benefits				
210 Group Insurance – Contracted Provider	370.12	320.91	802.92	1,493.95
220 Social Security Contributions	7,609.24	7,941.93	77,927.22	93,478.39
230 PSERS Retirement Contributions	168,056.16	74,175.57	119,764.19	361,995.92
260 Workers' Compensation	260.44	270.20	5,746.37	6,277.01
270 Group Insurance – Self-Insurance	37,593.05	32,595.62	37,525.66	107,714.33
Total Personnel Services – Employee Benefits	\$213,889.01	\$115,304.23	\$241,766.36	\$570,959.60
300 Purchased Professional and Technical Services				
322 Professional Educational Services – lus	374.92	325.08		700.00
330 Other Professional Services	10,276.89	15,652.54		25,929.43
390 Other Purchased Professional and Technical Services			4,123.00	4,123.00
Total Purchased Professional and Technical Services	\$10,651.81	\$15,977.62	\$4,123.00	\$30,752.43
500 Other Purchased Services				
530 Communications	55.88	48.46		104.34
550 Printing and Binding	415.63	360.37		776.00
580 Travel	187.55	162.62		350.17
Total Other Purchased Services	\$659.06	\$571.45		\$1,230.51
600 Supplies				
610 General Supplies	1,284.21	5,948.89		7,233.10
630 Food	951.04	824.61		1,775.65
640 Books and Periodicals	795.49	629.39	1,318.00	2,742.88
650 Supplies & Fees – Technology Related	1,350.66	1,171.11		2,521.77
Total Supplies	\$4,381.40	\$8,574.00	\$1,318.00	\$14,273.40
700 Property				
758 Capitalized Technology Software - Original	312.57	271.02		583.59
Total Property	\$312.57	\$271.02		\$583.59
800 Other Objects				
810 Dues and Fees	634.15	549.85		1,184.00
Total Other Objects	\$634.15	\$549.85		\$1,184.00
Total 2260 Instruction and Curriculum Development Services	\$335,346.82	\$250,044.96	\$594,119.59	\$1,179,511.37

LEA : 113361503 Columbia Borough SD

Printed 11/7/2023 11:58:12 AM

General Fund (10)

2270 Instructional Staff Professional Development Services	Elementary	Secondary	Federal	Total
100 <u>Personnel Services – Salaries</u>				
100 Personnel Services – Salaries	450.00	29.00		479.00
Total Personnel Services – Salaries	\$450.00	\$29.00		\$479.00
200 <u>Personnel Services – Employee Benefits</u>				
220 Social Security Contributions	31.80	2.15		33.95
230 PSERS Retirement Contributions	158.67	10.23		168.90
240 Tuition Reimbursement	35,083.35	54,342.38		89,425.73
260 Workers' Compensation	1.11	0.07		1.18
Total Personnel Services – Employee Benefits	\$35,274.93	\$54,354.83		\$89,629.76
300 <u>Purchased Professional and Technical Services</u>				
330 Other Professional Services	10,712.00	9,288.00		20,000.00
Total Purchased Professional and Technical Services	\$10,712.00	\$9,288.00		\$20,000.00
500 <u>Other Purchased Services</u>				
580 Travel	200.00			200.00
Total Other Purchased Services	\$200.00			\$200.00
600 <u>Supplies</u>				
630 Food	694.94	602.56		1,297.50
650 Supplies & Fees – Technology Related	5,213.67	4,520.59		9,734.26
Total Supplies	\$5,908.61	\$5,123.15		\$11,031.76
800 <u>Other Objects</u>				
810 Dues and Fees	107.12	92.88		200.00
Total Other Objects	\$107.12	\$92.88		\$200.00
Total 2270 Instructional Staff Professional Development Services	\$52,652.66	\$68,887.86		\$121,540.52

LEA : 113361503 Columbia Borough SD

Printed 11/7/2023 11:58:12 AM

General Fund (10)

2300 Support Services – Administration	<u>Elementary</u>	<u>Secondary</u>	<u>Federal</u>	<u>Total</u>
100 <u>Personnel Services – Salaries</u>				
100 Personnel Services – Salaries	334,680.34	296,612.72	37,000.00	882,416.52
Total Personnel Services – Salaries	\$334,680.34	\$296,612.72	\$37,000.00	\$882,416.52
200 <u>Personnel Services – Employee Benefits</u>				
210 Group Insurance – Contracted Provider	1,110.19	737.65		2,545.53
220 Social Security Contributions	25,129.62	22,239.19		65,817.72
230 PSERS Retirement Contributions	117,936.07	104,237.29		296,255.97
260 Workers' Compensation	830.01	735.60		2,189.09
270 Group Insurance – Self-Insurance	230,096.80	187,260.19		509,891.33
Total Personnel Services – Employee Benefits	\$375,102.69	\$315,209.92		\$876,699.64
300 <u>Purchased Professional and Technical Services</u>				
330 Other Professional Services				67,088.06
390 Other Purchased Professional and Technical Services	22,071.74	5,734.48		27,806.22
Total Purchased Professional and Technical Services	\$22,071.74	\$5,734.48		\$94,894.28
400 <u>Purchased Property Services</u>				
410 Cleaning Services	999.13	507.47		2,216.60
440 Rentals				1,202.00
Total Purchased Property Services	\$999.13	\$507.47		\$3,418.60
500 <u>Other Purchased Services</u>				
520 Insurance – General				455.00
530 Communications	3,579.74	4,601.09		8,341.07
549 Other Advertising/Public Relations				2,026.52
550 Printing and Binding		7,607.55		15,420.64
580 Travel	178.18			4,272.18
Total Other Purchased Services	\$3,757.92	\$12,208.64		\$30,515.41
600 <u>Supplies</u>				
610 General Supplies	41,639.21	8,820.37		71,584.32
630 Food	297.00	4,480.22		18,773.04
640 Books and Periodicals		99.15		99.15
650 Supplies & Fees – Technology Related	7,328.49	4,885.66		26,701.51
Total Supplies	\$49,264.70	\$18,285.40		\$117,158.02
800 <u>Other Objects</u>				
810 Dues and Fees	99.62	40.00		24,592.09
Total Other Objects	\$99.62	\$40.00		\$24,592.09
Total 2300 Support Services – Administration	\$785,976.14	\$648,598.63	\$37,000.00	\$2,029,694.56

LEA : 113361503 Columbia Borough SD

Printed 11/7/2023 11:58:12 AM

General Fund (10)

2310 Board Services

Elementary Secondary Federal Total

500 <u>Other Purchased Services</u>				
520 Insurance – General				100.00
530 Communications				160.24
549 Other Advertising/Public Relations				1,386.20
550 Printing and Binding				43.33
580 Travel				100.00
Total Other Purchased Services				\$1,789.77
600 <u>Supplies</u>				
610 General Supplies				80.77
Total Supplies				\$80.77
800 <u>Other Objects</u>				
810 Dues and Fees				8,288.55
Total Other Objects				\$8,288.55
Total 2310 Board Services				\$10,159.09

LEA : 113361503 Columbia Borough SD

Printed 11/7/2023 11:58:12 AM

General Fund (10)

2320 Board Treasurer Services	<u>Elementary</u>	<u>Secondary</u>	<u>Federal</u>	<u>Total</u>
500 <u>Other Purchased Services</u>				
520 Insurance – General				355.00
Total Other Purchased Services				\$355.00
Total 2320 Board Treasurer Services				\$355.00

LEA : 113361503 Columbia Borough SD

Printed 11/7/2023 11:58:12 AM

General Fund (10)

2330 Tax Assessment and Collection Services	<u>Elementary</u>	<u>Secondary</u>	<u>Federal</u>	<u>Total</u>
300 <u>Purchased Professional and Technical Services</u>				
330 Other Professional Services				21,463.14
Total Purchased Professional and Technical Services				\$21,463.14
500 <u>Other Purchased Services</u>				
550 Printing and Binding				7,656.80
Total Other Purchased Services				\$7,656.80
600 <u>Supplies</u>				
650 Supplies & Fees – Technology Related				2,700.00
Total Supplies				\$2,700.00
800 <u>Other Objects</u>				
810 Dues and Fees				10,490.02
Total Other Objects				\$10,490.02
Total 2330 Tax Assessment and Collection Services				\$42,309.96

LEA : 113361503 Columbia Borough SD

Printed 11/7/2023 11:58:12 AM

General Fund (10)

2350 Legal and Accounting Services	<u>Elementary</u>	<u>Secondary</u>	<u>Federal</u>	<u>Total</u>
300 <u>Purchased Professional and Technical Services</u>				
330 Other Professional Services				45,624.92
Total Purchased Professional and Technical Services				\$45,624.92
500 <u>Other Purchased Services</u>				
549 Other Advertising/Public Relations				640.32
Total Other Purchased Services				\$640.32
Total 2350 Legal and Accounting Services				\$46,265.24

LEA : 113361503 Columbia Borough SD

Printed 11/7/2023 11:58:12 AM

General Fund (10)

2360 Office of the Superintendent / Executive Director Services	<u>Elementary</u>	<u>Secondary</u>	<u>Federal</u>	<u>Total</u>
100 <u>Personnel Services – Salaries</u>				
100 Personnel Services – Salaries				214,123.46
Total Personnel Services – Salaries				\$214,123.46
200 <u>Personnel Services – Employee Benefits</u>				
210 Group Insurance – Contracted Provider				697.69
220 Social Security Contributions				15,617.67
230 PSERS Retirement Contributions				74,082.61
260 Workers' Compensation				531.47
270 Group Insurance – Self-Insurance				92,534.34
Total Personnel Services – Employee Benefits				\$183,463.78
400 <u>Purchased Property Services</u>				
410 Cleaning Services				710.00
440 Rentals				1,202.00
Total Purchased Property Services				\$1,912.00
500 <u>Other Purchased Services</u>				
530 Communications	3.90	3.39		7.29
550 Printing and Binding				112.96
580 Travel				3,994.00
Total Other Purchased Services	\$3.90	\$3.39		\$4,114.25
600 <u>Supplies</u>				
610 General Supplies				15,826.97
630 Food				13,995.82
650 Supplies & Fees – Technology Related				11,787.36
Total Supplies				\$41,610.15
800 <u>Other Objects</u>				
810 Dues and Fees				5,673.90
Total Other Objects				\$5,673.90
Total 2360 Office of the Superintendent / Executive Director Services	\$3.90	\$3.39		\$450,897.54

LEA : 113361503 Columbia Borough SD

Printed 11/7/2023 11:58:12 AM

General Fund (10)				
2380 Office of the Principal Services	<u>Elementary</u>	<u>Secondary</u>	<u>Federal</u>	<u>Total</u>
100 <u>Personnel Services – Salaries</u>				
100 Personnel Services – Salaries	334,680.34	296,612.72		631,293.06
Total Personnel Services – Salaries	\$334,680.34	\$296,612.72		\$631,293.06
200 <u>Personnel Services – Employee Benefits</u>				
210 Group Insurance – Contracted Provider	1,110.19	737.65		1,847.84
220 Social Security Contributions	25,129.62	22,239.19		47,368.81
230 PSERS Retirement Contributions	117,936.07	104,237.29		222,173.36
260 Workers' Compensation	830.01	735.60		1,565.61
270 Group Insurance – Self-Insurance	230,096.80	187,260.19		417,356.99
Total Personnel Services – Employee Benefits	\$375,102.69	\$315,209.92		\$690,312.61
300 <u>Purchased Professional and Technical Services</u>				
390 Other Purchased Professional and Technical Services	22,071.74	5,734.48		27,806.22
Total Purchased Professional and Technical Services	\$22,071.74	\$5,734.48		\$27,806.22
400 <u>Purchased Property Services</u>				
410 Cleaning Services	999.13	507.47		1,506.60
Total Purchased Property Services	\$999.13	\$507.47		\$1,506.60
500 <u>Other Purchased Services</u>				
530 Communications	3,575.84	4,597.70		8,173.54
550 Printing and Binding		7,607.55		7,607.55
580 Travel	178.18			178.18
Total Other Purchased Services	\$3,754.02	\$12,205.25		\$15,959.27
600 <u>Supplies</u>				
610 General Supplies	41,639.21	8,820.37		50,459.58
630 Food	297.00	4,480.22		4,777.22
640 Books and Periodicals		99.15		99.15
650 Supplies & Fees – Technology Related	7,328.49	4,885.66		12,214.15
Total Supplies	\$49,264.70	\$18,285.40		\$67,550.10
800 <u>Other Objects</u>				
810 Dues and Fees	99.62	40.00		139.62
Total Other Objects	\$99.62	\$40.00		\$139.62
Total 2380 Office of the Principal Services	\$785,972.24	\$648,595.24		\$1,434,567.48

LEA : 113361503 Columbia Borough SD

Printed 11/7/2023 11:58:12 AM

General Fund (10)

2390 Other Administration Services	<u>Elementary</u>	<u>Secondary</u>	<u>Federal</u>	<u>Total</u>
100 <u>Personnel Services – Salaries</u>				
100 Personnel Services – Salaries			37,000.00	37,000.00
Total Personnel Services – Salaries			\$37,000.00	\$37,000.00
200 <u>Personnel Services – Employee Benefits</u>				
220 Social Security Contributions				2,831.24
260 Workers’ Compensation				92.01
Total Personnel Services – Employee Benefits				\$2,923.25
600 <u>Supplies</u>				
610 General Supplies				5,217.00
Total Supplies				\$5,217.00
Total 2390 Other Administration Services			\$37,000.00	\$45,140.25

LEA : 113361503 Columbia Borough SD

Printed 11/7/2023 11:58:12 AM

General Fund (10)

2400 Support Services – Pupil Health	<u>Elementary</u>	<u>Secondary</u>	<u>Federal</u>	<u>Total</u>
100 <u>Personnel Services – Salaries</u>				
100 Personnel Services – Salaries			146,135.75	147,005.75
Total Personnel Services – Salaries			\$146,135.75	\$147,005.75
200 <u>Personnel Services – Employee Benefits</u>				
210 Group Insurance – Contracted Provider			108.00	108.00
220 Social Security Contributions			10,624.00	10,687.76
230 PSERS Retirement Contributions			15,251.51	51,834.22
260 Workers' Compensation			810.27	814.19
270 Group Insurance – Self-Insurance			53,038.71	53,038.71
Total Personnel Services – Employee Benefits			\$79,832.49	\$116,482.88
300 <u>Purchased Professional and Technical Services</u>				
322 Professional Educational Services – lus				16,862.30
330 Other Professional Services				153,058.58
Total Purchased Professional and Technical Services				\$169,920.88
600 <u>Supplies</u>				
610 General Supplies				3,453.98
650 Supplies & Fees – Technology Related				7,949.67
Total Supplies				\$11,403.65
Total 2400 Support Services – Pupil Health			\$225,968.24	\$444,813.16

LEA : 113361503 Columbia Borough SD

Printed 11/7/2023 11:58:12 AM

General Fund (10)

2420 Medical Services	<u>Elementary</u>	<u>Secondary</u>	<u>Federal</u>	<u>Total</u>
100 <u>Personnel Services – Salaries</u>				
100 Personnel Services – Salaries				464.00
Total Personnel Services – Salaries				\$464.00
200 <u>Personnel Services – Employee Benefits</u>				
220 Social Security Contributions				35.20
230 PSERS Retirement Contributions				163.61
260 Workers’ Compensation				2.92
Total Personnel Services – Employee Benefits				\$201.73
300 <u>Purchased Professional and Technical Services</u>				
322 Professional Educational Services – Ius				16,862.30
330 Other Professional Services				100,071.08
Total Purchased Professional and Technical Services				\$116,933.38
600 <u>Supplies</u>				
610 General Supplies				415.34
Total Supplies				\$415.34
Total 2420 Medical Services				\$118,014.45

LEA : 113361503 Columbia Borough SD

Printed 11/7/2023 11:58:12 AM

General Fund (10)

2440 Nursing Services

	<u>Elementary</u>	<u>Secondary</u>	<u>Federal</u>	<u>Total</u>
100 <u>Personnel Services – Salaries</u>				
100 Personnel Services – Salaries			146,135.75	146,541.75
Total Personnel Services – Salaries			\$146,135.75	\$146,541.75
200 <u>Personnel Services – Employee Benefits</u>				
210 Group Insurance – Contracted Provider			108.00	108.00
220 Social Security Contributions			10,624.00	10,652.56
230 PSERS Retirement Contributions			15,251.51	51,670.61
260 Workers' Compensation			810.27	811.27
270 Group Insurance – Self-Insurance			53,038.71	53,038.71
Total Personnel Services – Employee Benefits			\$79,832.49	\$116,281.15
300 <u>Purchased Professional and Technical Services</u>				
330 Other Professional Services				52,987.50
Total Purchased Professional and Technical Services				\$52,987.50
600 <u>Supplies</u>				
610 General Supplies				3,038.64
650 Supplies & Fees – Technology Related				7,949.67
Total Supplies				\$10,988.31
Total 2440 Nursing Services			\$225,968.24	\$326,798.71

LEA : 113361503 Columbia Borough SD

Printed 11/7/2023 11:58:12 AM

General Fund (10)				
2500 Support Services – Business	<u>Elementary</u>	<u>Secondary</u>	<u>Federal</u>	<u>Total</u>
100 <u>Personnel Services – Salaries</u>				
100 Personnel Services – Salaries				53,239.11
Total Personnel Services – Salaries				\$53,239.11
200 <u>Personnel Services – Employee Benefits</u>				
210 Group Insurance – Contracted Provider				72.14
220 Social Security Contributions				3,636.58
230 PSERS Retirement Contributions				17,437.90
260 Workers' Compensation				132.87
270 Group Insurance – Self-Insurance				35,493.15
Total Personnel Services – Employee Benefits				\$56,772.64
300 <u>Purchased Professional and Technical Services</u>				
330 Other Professional Services			2,867.79	104,577.15
390 Other Purchased Professional and Technical Services				780.00
Total Purchased Professional and Technical Services			\$2,867.79	\$105,357.15
400 <u>Purchased Property Services</u>				
410 Cleaning Services				235.98
430 Repairs and Maintenance Services				23,409.12
Total Purchased Property Services				\$23,645.10
500 <u>Other Purchased Services</u>				
530 Communications				2,558.29
580 Travel				1,024.71
Total Other Purchased Services				\$3,583.00
600 <u>Supplies</u>				
610 General Supplies				2,477.11
630 Food				777.75
650 Supplies & Fees – Technology Related				16,717.40
Total Supplies				\$19,972.26
800 <u>Other Objects</u>				
810 Dues and Fees				3,465.48
Total Other Objects				\$3,465.48
Total 2500 Support Services – Business			\$2,867.79	\$266,034.74

LEA : 113361503 Columbia Borough SD

Printed 11/7/2023 11:58:12 AM

General Fund (10)				
2510 Fiscal Services	<u>Elementary</u>	<u>Secondary</u>	<u>Federal</u>	<u>Total</u>
100 <u>Personnel Services – Salaries</u>				
100 Personnel Services – Salaries				53,239.11
Total Personnel Services – Salaries				\$53,239.11
200 <u>Personnel Services – Employee Benefits</u>				
210 Group Insurance – Contracted Provider				72.14
220 Social Security Contributions				3,636.58
230 PSERS Retirement Contributions				17,437.90
260 Workers' Compensation				132.87
270 Group Insurance – Self-Insurance				35,493.15
Total Personnel Services – Employee Benefits				\$56,772.64
300 <u>Purchased Professional and Technical Services</u>				
330 Other Professional Services			2,867.79	104,577.15
390 Other Purchased Professional and Technical Services				780.00
Total Purchased Professional and Technical Services			\$2,867.79	\$105,357.15
400 <u>Purchased Property Services</u>				
410 Cleaning Services				235.98
430 Repairs and Maintenance Services				23,409.12
Total Purchased Property Services				\$23,645.10
500 <u>Other Purchased Services</u>				
530 Communications				2,558.29
580 Travel				1,024.71
Total Other Purchased Services				\$3,583.00
600 <u>Supplies</u>				
610 General Supplies				2,477.11
630 Food				777.75
650 Supplies & Fees – Technology Related				16,717.40
Total Supplies				\$19,972.26
800 <u>Other Objects</u>				
810 Dues and Fees				3,465.48
Total Other Objects				\$3,465.48
Total 2510 Fiscal Services			\$2,867.79	\$266,034.74

LEA : 113361503 Columbia Borough SD

Printed 11/7/2023 11:58:12 AM

General Fund (10)

2511 Supervision of Fiscal Services - Head of Component	<u>Elementary</u>	<u>Secondary</u>	<u>Federal</u>	<u>Total</u>
300 <u>Purchased Professional and Technical Services</u>				
330 Other Professional Services				101,709.36
Total Purchased Professional and Technical Services				\$101,709.36
400 <u>Purchased Property Services</u>				
410 Cleaning Services				235.98
Total Purchased Property Services				\$235.98
600 <u>Supplies</u>				
610 General Supplies				336.23
Total Supplies				\$336.23
800 <u>Other Objects</u>				
810 Dues and Fees				200.00
Total Other Objects				\$200.00
Total 2511 Supervision of Fiscal Services - Head of Component				\$102,481.57

LEA : 113361503 Columbia Borough SD

Printed 11/7/2023 11:58:12 AM

General Fund (10)

2514 Payroll Services

	<u>Elementary</u>	<u>Secondary</u>	<u>Federal</u>	<u>Total</u>
100 <u>Personnel Services – Salaries</u>				
100 Personnel Services – Salaries				26,600.22
Total Personnel Services – Salaries				\$26,600.22
200 <u>Personnel Services – Employee Benefits</u>				
210 Group Insurance – Contracted Provider				36.07
220 Social Security Contributions				1,816.93
230 PSERS Retirement Contributions				8,712.13
260 Workers' Compensation				66.39
270 Group Insurance – Self-Insurance				17,746.73
Total Personnel Services – Employee Benefits				\$28,378.25
300 <u>Purchased Professional and Technical Services</u>				
390 Other Purchased Professional and Technical Services				780.00
Total Purchased Professional and Technical Services				\$780.00
600 <u>Supplies</u>				
650 Supplies & Fees – Technology Related				6,665.30
Total Supplies				\$6,665.30
Total 2514 Payroll Services				\$62,423.77

LEA : 113361503 Columbia Borough SD

Printed 11/7/2023 11:58:12 AM

General Fund (10)				
2515 Financial Accounting Services	<u>Elementary</u>	<u>Secondary</u>	<u>Federal</u>	<u>Total</u>
100 <u>Personnel Services – Salaries</u>				
100 Personnel Services – Salaries				26,638.89
Total Personnel Services – Salaries				\$26,638.89
200 <u>Personnel Services – Employee Benefits</u>				
210 Group Insurance – Contracted Provider				36.07
220 Social Security Contributions				1,819.65
230 PSERS Retirement Contributions				8,725.77
260 Workers' Compensation				66.48
270 Group Insurance – Self-Insurance				17,746.42
Total Personnel Services – Employee Benefits				\$28,394.39
300 <u>Purchased Professional and Technical Services</u>				
330 Other Professional Services			2,867.79	2,867.79
Total Purchased Professional and Technical Services			\$2,867.79	\$2,867.79
500 <u>Other Purchased Services</u>				
530 Communications				719.59
580 Travel				348.54
Total Other Purchased Services				\$1,068.13
600 <u>Supplies</u>				
610 General Supplies				16.99
650 Supplies & Fees – Technology Related				8,452.10
Total Supplies				\$8,469.09
Total 2515 Financial Accounting Services			\$2,867.79	\$67,438.29

LEA : 113361503 Columbia Borough SD

Printed 11/7/2023 11:58:12 AM

General Fund (10)				
2517 Property Accounting Services	<u>Elementary</u>	<u>Secondary</u>	<u>Federal</u>	<u>Total</u>
600 <u>Supplies</u>				
650 Supplies & Fees – Technology Related				1,600.00
Total Supplies				\$1,600.00
Total 2517 Property Accounting Services				\$1,600.00

LEA : 113361503 Columbia Borough SD

Printed 11/7/2023 11:58:12 AM

General Fund (10)

2519 Other Fiscal Services	<u>Elementary</u>	<u>Secondary</u>	<u>Federal</u>	<u>Total</u>
400 <u>Purchased Property Services</u>				
430 Repairs and Maintenance Services				23,409.12
Total Purchased Property Services				\$23,409.12
500 <u>Other Purchased Services</u>				
530 Communications				1,838.70
580 Travel				676.17
Total Other Purchased Services				\$2,514.87
600 <u>Supplies</u>				
610 General Supplies				2,123.89
630 Food				777.75
Total Supplies				\$2,901.64
800 <u>Other Objects</u>				
810 Dues and Fees				3,265.48
Total Other Objects				\$3,265.48
Total 2519 Other Fiscal Services				\$32,091.11

LEA : 113361503 Columbia Borough SD

Printed 11/7/2023 11:58:12 AM

General Fund (10)

2600 Operation and Maintenance of Plant Services	<u>Elementary</u>	<u>Secondary</u>	<u>Federal</u>	<u>Total</u>
100 <u>Personnel Services – Salaries</u>				
100 Personnel Services – Salaries				292,160.58
Total Personnel Services – Salaries				\$292,160.58
200 <u>Personnel Services – Employee Benefits</u>				
210 Group Insurance – Contracted Provider				495.81
220 Social Security Contributions				22,408.42
230 PSERS Retirement Contributions				100,231.44
260 Workers' Compensation				726.79
270 Group Insurance – Self-Insurance				223,882.95
Total Personnel Services – Employee Benefits				\$347,745.41
300 <u>Purchased Professional and Technical Services</u>				
350 Security / Safety Services				47,002.06
Total Purchased Professional and Technical Services				\$47,002.06
400 <u>Purchased Property Services</u>				
410 Cleaning Services				405,938.49
420 Utility Services				34,486.59
430 Repairs and Maintenance Services				215,017.73
440 Rentals				10,261.63
450 Construction Services				39,884.99
460 Extermination Services				5,384.19
Total Purchased Property Services				\$710,973.62
500 <u>Other Purchased Services</u>				
523 General Property and Liability Insurance				144,061.00
549 Other Advertising/Public Relations				364.20
550 Printing and Binding				490.57
580 Travel				726.00
Total Other Purchased Services				\$145,641.77
600 <u>Supplies</u>				
610 General Supplies	76,206.53	84,067.77		160,274.30
620 Energy				363,809.97
630 Food				72.02
640 Books and Periodicals				42.00
650 Supplies & Fees – Technology Related				10,295.07
Total Supplies	\$76,206.53	\$84,067.77		\$534,493.36
700 <u>Property</u>				
752 Capital Equipment – Original and Additional				61,933.00
762 Capitalized Equipment - Replacement				341,319.99
Total Property				\$403,252.99
800 <u>Other Objects</u>				
810 Dues and Fees				2,079.42
Total Other Objects				\$2,079.42
Total 2600 Operation and Maintenance of Plant Services	\$76,206.53	\$84,067.77		\$2,483,349.21

LEA : 113361503 Columbia Borough SD

Printed 11/7/2023 11:58:12 AM

General Fund (10)

2610 Supervision of Operation and Maintenance of Plant Services	<u>Elementary</u>	<u>Secondary</u>	<u>Federal</u>	<u>Total</u>
100 <u>Personnel Services – Salaries</u>				
100 Personnel Services – Salaries				95,947.43
Total Personnel Services – Salaries				\$95,947.43
200 <u>Personnel Services – Employee Benefits</u>				
210 Group Insurance – Contracted Provider				183.24
220 Social Security Contributions				7,676.24
230 PSERS Retirement Contributions				33,831.16
260 Workers' Compensation				237.73
270 Group Insurance – Self-Insurance				57,246.08
Total Personnel Services – Employee Benefits				\$99,174.45
600 <u>Supplies</u>				
610 General Supplies	1,919.19	1,664.07		3,583.26
650 Supplies & Fees – Technology Related				2,442.83
Total Supplies	\$1,919.19	\$1,664.07		\$6,026.09
Total 2610 Supervision of Operation and Maintenance of Plant Services	\$1,919.19	\$1,664.07		\$201,147.97

General Fund (10)				
2611 Supervision of Operation and Maintenance of Plant Services – Head of Component	<u>Elementary</u>	<u>Secondary</u>	<u>Federal</u>	<u>Total</u>
100 <u>Personnel Services – Salaries</u>				
100 Personnel Services – Salaries				95,947.43
Total Personnel Services – Salaries				\$95,947.43
200 <u>Personnel Services – Employee Benefits</u>				
210 Group Insurance – Contracted Provider				183.24
220 Social Security Contributions				7,676.24
230 PSERS Retirement Contributions				33,831.16
260 Workers' Compensation				237.73
270 Group Insurance – Self-Insurance				57,246.08
Total Personnel Services – Employee Benefits				\$99,174.45
600 <u>Supplies</u>				
610 General Supplies	1,919.19	1,664.07		3,583.26
650 Supplies & Fees – Technology Related				2,442.83
Total Supplies	\$1,919.19	\$1,664.07		\$6,026.09
Total 2611 Supervision of Operation and Maintenance of Plant Services – Head of Component	\$1,919.19	\$1,664.07		\$201,147.97

LEA : 113361503 Columbia Borough SD

Printed 11/7/2023 11:58:12 AM

General Fund (10)

2620 Operation of Buildings Services	Elementary	Secondary	Federal	Total
100 <u>Personnel Services – Salaries</u>				
100 Personnel Services – Salaries				196,184.15
Total Personnel Services – Salaries				\$196,184.15
200 <u>Personnel Services – Employee Benefits</u>				
210 Group Insurance – Contracted Provider				312.57
220 Social Security Contributions				14,730.03
230 PSERS Retirement Contributions				66,390.05
260 Workers' Compensation				488.99
270 Group Insurance – Self-Insurance				166,636.87
Total Personnel Services – Employee Benefits				\$248,558.51
400 <u>Purchased Property Services</u>				
410 Cleaning Services				369,540.00
420 Utility Services				34,486.59
430 Repairs and Maintenance Services				213,179.83
440 Rentals				10,261.63
460 Extermination Services				5,384.19
Total Purchased Property Services				\$632,852.24
500 <u>Other Purchased Services</u>				
523 General Property and Liability Insurance				144,061.00
549 Other Advertising/Public Relations				364.20
580 Travel				85.00
Total Other Purchased Services				\$144,510.20
600 <u>Supplies</u>				
610 General Supplies	72,254.50	80,685.10		152,939.60
620 Energy				363,359.13
630 Food				72.02
640 Books and Periodicals				42.00
650 Supplies & Fees – Technology Related				3,582.24
Total Supplies	\$72,254.50	\$80,685.10		\$519,994.99
700 <u>Property</u>				
762 Capitalized Equipment - Replacement				310,319.99
Total Property				\$310,319.99
800 <u>Other Objects</u>				
810 Dues and Fees				300.44
Total Other Objects				\$300.44
Total 2620 Operation of Buildings Services	\$72,254.50	\$80,685.10		\$2,052,720.52

LEA : 113361503 Columbia Borough SD

Printed 11/7/2023 11:58:12 AM

General Fund (10)

2630 Care and Upkeep of Grounds Services	<u>Elementary</u>	<u>Secondary</u>	<u>Federal</u>	<u>Total</u>
400 <u>Purchased Property Services</u>				
410 Cleaning Services				36,398.49
450 Construction Services				1,800.00
Total Purchased Property Services				\$38,198.49
700 <u>Property</u>				
762 Capitalized Equipment - Replacement				31,000.00
Total Property				\$31,000.00
Total 2630 Care and Upkeep of Grounds Services				\$69,198.49

LEA : 113361503 Columbia Borough SD

Printed 11/7/2023 11:58:12 AM

General Fund (10)				
2640 Care and Upkeep of Equipment Services	<u>Elementary</u>	<u>Secondary</u>	<u>Federal</u>	<u>Total</u>
800 <u>Other Objects</u>				
810 Dues and Fees				1,778.98
Total Other Objects				\$1,778.98
Total 2640 Care and Upkeep of Equipment Services				\$1,778.98

LEA : 113361503 Columbia Borough SD

Printed 11/7/2023 11:58:12 AM

General Fund (10)

2650 Vehicle Operation and Maintenance Services (Other Than Student Transportation Vehicles)	<u>Elementary</u>	<u>Secondary</u>	<u>Federal</u>	<u>Total</u>
400 <u>Purchased Property Services</u>				
430 Repairs and Maintenance Services				1,837.90
Total Purchased Property Services				\$1,837.90
600 <u>Supplies</u>				
610 General Supplies	33.28	28.86		62.14
620 Energy				450.84
Total Supplies	\$33.28	\$28.86		\$512.98
700 <u>Property</u>				
752 Capital Equipment – Original and Additional				61,933.00
Total Property				\$61,933.00
Total 2650 Vehicle Operation and Maintenance Services (Other Than Student Transportation Vehicles)	\$33.28	\$28.86		\$64,283.88

LEA : 113361503 Columbia Borough SD

Printed 11/7/2023 11:58:12 AM

General Fund (10)

2660 Safety and Security Services	<u>Elementary</u>	<u>Secondary</u>	<u>Federal</u>	<u>Total</u>
100 <u>Personnel Services – Salaries</u>				
100 Personnel Services – Salaries				29.00
Total Personnel Services – Salaries				\$29.00
200 <u>Personnel Services – Employee Benefits</u>				
220 Social Security Contributions				2.15
230 PSERS Retirement Contributions				10.23
260 Workers’ Compensation				0.07
Total Personnel Services – Employee Benefits				\$12.45
300 <u>Purchased Professional and Technical Services</u>				
350 Security / Safety Services				47,002.06
Total Purchased Professional and Technical Services				\$47,002.06
400 <u>Purchased Property Services</u>				
450 Construction Services				38,084.99
Total Purchased Property Services				\$38,084.99
500 <u>Other Purchased Services</u>				
550 Printing and Binding				490.57
580 Travel				641.00
Total Other Purchased Services				\$1,131.57
600 <u>Supplies</u>				
610 General Supplies	1,999.56	1,689.74		3,689.30
650 Supplies & Fees – Technology Related				4,270.00
Total Supplies	\$1,999.56	\$1,689.74		\$7,959.30
Total 2660 Safety and Security Services	\$1,999.56	\$1,689.74		\$94,219.37

LEA : 113361503 Columbia Borough SD

Printed 11/7/2023 11:58:12 AM

General Fund (10)

2700 Student Transportation Services	<u>Elementary</u>	<u>Secondary</u>	<u>Federal</u>	<u>Total</u>
500 <u>Other Purchased Services</u>				
513 Contracted Carriers			38,323.00	411,686.87
516 Student Transportation Services From the IU				617.49
Total Other Purchased Services			\$38,323.00	\$412,304.36
Total 2700 Student Transportation Services			\$38,323.00	\$412,304.36

LEA : 113361503 Columbia Borough SD

Printed 11/7/2023 11:58:12 AM

General Fund (10)

2720 Vehicle Operation Services	<u>Elementary</u>	<u>Secondary</u>	<u>Federal</u>	<u>Total</u>
500 <u>Other Purchased Services</u>				
513 Contracted Carriers			38,323.00	411,686.87
516 Student Transportation Services From the IU				617.49
Total Other Purchased Services			\$38,323.00	\$412,304.36
Total 2720 Vehicle Operation Services			\$38,323.00	\$412,304.36

LEA : 113361503 Columbia Borough SD

Printed 11/7/2023 11:58:12 AM

General Fund (10)

2800 Support Services – Central	Elementary	Secondary	Federal	Total
100 <u>Personnel Services – Salaries</u>				
100 Personnel Services – Salaries				73,678.88
Total Personnel Services – Salaries				\$73,678.88
200 <u>Personnel Services – Employee Benefits</u>				
210 Group Insurance – Contracted Provider				72.13
220 Social Security Contributions				5,581.32
230 PSERS Retirement Contributions				25,655.92
240 Tuition Reimbursement				52,243.95
260 Workers' Compensation				184.33
270 Group Insurance – Self-Insurance				22,103.44
Total Personnel Services – Employee Benefits				\$105,841.09
300 <u>Purchased Professional and Technical Services</u>				
330 Other Professional Services			22,735.00	136,025.69
340 Technical Services				262,380.18
360 Employee Training and Development Services			13,215.00	19,194.00
Total Purchased Professional and Technical Services			\$35,950.00	\$417,599.87
400 <u>Purchased Property Services</u>				
410 Cleaning Services				1,471.98
430 Repairs and Maintenance Services				10,110.61
440 Rentals				3,162.00
Total Purchased Property Services				\$14,744.59
500 <u>Other Purchased Services</u>				
530 Communications			3,350.70	74,766.72
549 Other Advertising/Public Relations				5,324.13
550 Printing and Binding				3,279.73
580 Travel				10,166.53
Total Other Purchased Services			\$3,350.70	\$93,537.11
600 <u>Supplies</u>				
610 General Supplies				30,765.87
630 Food				778.20
650 Supplies & Fees – Technology Related				200,225.72
Total Supplies				\$231,769.79
700 <u>Property</u>				
756 Capitalized Technology Equipment – Original				27,567.82
766 Capitalized Technology Equipment – Replacement				42,742.46
Total Property				\$70,310.28
800 <u>Other Objects</u>				
810 Dues and Fees				2,110.00
Total Other Objects				\$2,110.00
Total 2800 Support Services – Central			\$39,300.70	\$1,009,591.61

LEA : 113361503 Columbia Borough SD

Printed 11/7/2023 11:58:12 AM

General Fund (10)				
2810 Planning, Research, Development and Evaluation Services	<u>Elementary</u>	<u>Secondary</u>	<u>Federal</u>	<u>Total</u>
100 <u>Personnel Services – Salaries</u>				
100 Personnel Services – Salaries				24,604.26
Total Personnel Services – Salaries				\$24,604.26
200 <u>Personnel Services – Employee Benefits</u>				
220 Social Security Contributions				1,880.04
230 PSERS Retirement Contributions				8,675.43
260 Workers’ Compensation				61.86
Total Personnel Services – Employee Benefits				\$10,617.33
300 <u>Purchased Professional and Technical Services</u>				
330 Other Professional Services				50,791.12
340 Technical Services				262,380.18
Total Purchased Professional and Technical Services				\$313,171.30
400 <u>Purchased Property Services</u>				
410 Cleaning Services				1,471.98
430 Repairs and Maintenance Services				10,110.61
440 Rentals				3,162.00
Total Purchased Property Services				\$14,744.59
500 <u>Other Purchased Services</u>				
530 Communications			3,350.70	73,851.14
580 Travel				2,464.00
Total Other Purchased Services			\$3,350.70	\$76,315.14
600 <u>Supplies</u>				
610 General Supplies				28,670.15
650 Supplies & Fees – Technology Related				180,205.84
Total Supplies				\$208,875.99
700 <u>Property</u>				
756 Capitalized Technology Equipment – Original				27,567.82
766 Capitalized Technology Equipment – Replacement				42,742.46
Total Property				\$70,310.28
Total 2810 Planning, Research, Development and Evaluation Services			\$3,350.70	\$718,638.89

LEA : 113361503 Columbia Borough SD

Printed 11/7/2023 11:58:12 AM

General Fund (10)

2820 Information Services

Elementary Secondary Federal Total

500 Other Purchased Services

530 Communications				915.58
549 Other Advertising/Public Relations				1,000.00
550 Printing and Binding				3,279.73

Total Other Purchased Services				\$5,195.31
---------------------------------------	--	--	--	-------------------

Total 2820 Information Services				\$5,195.31
--	--	--	--	-------------------

LEA : 113361503 Columbia Borough SD

Printed 11/7/2023 11:58:12 AM

General Fund (10)

2823 Public Information Services	<u>Elementary</u>	<u>Secondary</u>	<u>Federal</u>	<u>Total</u>
500 <u>Other Purchased Services</u>				
530 Communications				915.58
549 Other Advertising/Public Relations				1,000.00
550 Printing and Binding				3,279.73
Total Other Purchased Services				\$5,195.31
Total 2823 Public Information Services				\$5,195.31

LEA : 113361503 Columbia Borough SD

Printed 11/7/2023 11:58:12 AM

General Fund (10)				
2830 Staff Services				
	<u>Elementary</u>	<u>Secondary</u>	<u>Federal</u>	<u>Total</u>
200 <u>Personnel Services – Employee Benefits</u>				
240 Tuition Reimbursement				52,243.95
Total Personnel Services – Employee Benefits				\$52,243.95
300 <u>Purchased Professional and Technical Services</u>				
330 Other Professional Services			22,735.00	85,234.57
360 Employee Training and Development Services			13,215.00	19,194.00
Total Purchased Professional and Technical Services			\$35,950.00	\$104,428.57
500 <u>Other Purchased Services</u>				
549 Other Advertising/Public Relations				4,324.13
580 Travel				7,702.53
Total Other Purchased Services				\$12,026.66
600 <u>Supplies</u>				
610 General Supplies				2,095.72
630 Food				778.20
650 Supplies & Fees – Technology Related				20,019.88
Total Supplies				\$22,893.80
800 <u>Other Objects</u>				
810 Dues and Fees				1,610.00
Total Other Objects				\$1,610.00
Total 2830 Staff Services			\$35,950.00	\$193,202.98

LEA : 113361503 Columbia Borough SD

Printed 11/7/2023 11:58:12 AM

General Fund (10)

2831 Supervision of Staff Services	<u>Elementary</u>	<u>Secondary</u>	<u>Federal</u>	<u>Total</u>
300 <u>Purchased Professional and Technical Services</u>				
330 Other Professional Services				60,549.57
Total Purchased Professional and Technical Services				\$60,549.57
500 <u>Other Purchased Services</u>				
580 Travel				38.94
Total Other Purchased Services				\$38.94
600 <u>Supplies</u>				
610 General Supplies				161.66
650 Supplies & Fees – Technology Related				3,682.48
Total Supplies				\$3,844.14
Total 2831 Supervision of Staff Services				\$64,432.65

LEA : 113361503 Columbia Borough SD

Printed 11/7/2023 11:58:12 AM

General Fund (10)

2832 Recruitment and Placement Services	<u>Elementary</u>	<u>Secondary</u>	<u>Federal</u>	<u>Total</u>
300 <u>Purchased Professional and Technical Services</u>				
330 Other Professional Services				1,950.00
Total Purchased Professional and Technical Services				\$1,950.00
500 <u>Other Purchased Services</u>				
549 Other Advertising/Public Relations				4,324.13
Total Other Purchased Services				\$4,324.13
600 <u>Supplies</u>				
610 General Supplies				531.78
650 Supplies & Fees – Technology Related				109.99
Total Supplies				\$641.77
800 <u>Other Objects</u>				
810 Dues and Fees				1,560.00
Total Other Objects				\$1,560.00
Total 2832 Recruitment and Placement Services				\$8,475.90

LEA : 113361503 Columbia Borough SD

Printed 11/7/2023 11:58:12 AM

General Fund (10)

2833 Staff Accounting Services

Elementary Secondary Federal Total

600 <u>Supplies</u>				
650 Supplies & Fees – Technology Related				14,479.41

Total Supplies				\$14,479.41
Total 2833 Staff Accounting Services				\$14,479.41

LEA : 113361503 Columbia Borough SD

Printed 11/7/2023 11:58:12 AM

General Fund (10)				
2834 Staff Development Services – Non-Instructional, Certified Staff Only	<u>Elementary</u>	<u>Secondary</u>	<u>Federal</u>	<u>Total</u>
200 <u>Personnel Services – Employee Benefits</u>				
240 Tuition Reimbursement				45,402.95
Total Personnel Services – Employee Benefits				\$45,402.95
300 <u>Purchased Professional and Technical Services</u>				
330 Other Professional Services			22,735.00	22,735.00
360 Employee Training and Development Services			13,215.00	18,510.00
Total Purchased Professional and Technical Services			\$35,950.00	\$41,245.00
500 <u>Other Purchased Services</u>				
580 Travel				3,328.77
Total Other Purchased Services				\$3,328.77
600 <u>Supplies</u>				
610 General Supplies				1,402.28
630 Food				211.08
Total Supplies				\$1,613.36
Total 2834 Staff Development Services – Non-Instructional, Certified Staff Only			\$35,950.00	\$91,590.08

LEA : 113361503 Columbia Borough SD

Printed 11/7/2023 11:58:12 AM

General Fund (10)

2836 Staff Development Services – Non-Instructional, Non-Certified Staff Only	<u>Elementary</u>	<u>Secondary</u>	<u>Federal</u>	<u>Total</u>
200 <u>Personnel Services – Employee Benefits</u>				
240 Tuition Reimbursement				6,841.00
Total Personnel Services – Employee Benefits				\$6,841.00
300 <u>Purchased Professional and Technical Services</u>				
360 Employee Training and Development Services				684.00
Total Purchased Professional and Technical Services				\$684.00
500 <u>Other Purchased Services</u>				
580 Travel				4,334.82
Total Other Purchased Services				\$4,334.82
600 <u>Supplies</u>				
630 Food				567.12
Total Supplies				\$567.12
800 <u>Other Objects</u>				
810 Dues and Fees				50.00
Total Other Objects				\$50.00
Total 2836 Staff Development Services – Non-Instructional, Non-Certified Staff Only				\$12,476.94

LEA : 113361503 Columbia Borough SD

Printed 11/7/2023 11:58:12 AM

General Fund (10)

2839 Other Staff Services

<u>Elementary</u>	<u>Secondary</u>	<u>Federal</u>	<u>Total</u>
-------------------	------------------	----------------	--------------

600 Supplies

650 Supplies & Fees – Technology Related				1,748.00
--	--	--	--	----------

Total Supplies				\$1,748.00
-----------------------	--	--	--	-------------------

Total 2839 Other Staff Services				\$1,748.00
--	--	--	--	-------------------

LEA : 113361503 Columbia Borough SD

Printed 11/7/2023 11:58:12 AM

General Fund (10)

2850 State and Federal Agency Liaison Services	<u>Elementary</u>	<u>Secondary</u>	<u>Federal</u>	<u>Total</u>
100 <u>Personnel Services – Salaries</u>				
100 Personnel Services – Salaries				49,074.62
Total Personnel Services – Salaries				\$49,074.62
200 <u>Personnel Services – Employee Benefits</u>				
210 Group Insurance – Contracted Provider				72.13
220 Social Security Contributions				3,701.28
230 PSERS Retirement Contributions				16,980.49
260 Workers' Compensation				122.47
270 Group Insurance – Self-Insurance				22,103.44
Total Personnel Services – Employee Benefits				\$42,979.81
800 <u>Other Objects</u>				
810 Dues and Fees				500.00
Total Other Objects				\$500.00
Total 2850 State and Federal Agency Liaison Services				\$92,554.43

LEA : 113361503 Columbia Borough SD

Printed 11/7/2023 11:58:12 AM

General Fund (10)

2900 Other Support Services	<u>Elementary</u>	<u>Secondary</u>	<u>Federal</u>	<u>Total</u>
100 <u>Personnel Services – Salaries</u>				
100 Personnel Services – Salaries				8,015.28
Total Personnel Services – Salaries				\$8,015.28
200 <u>Personnel Services – Employee Benefits</u>				
230 PSERS Retirement Contributions				38.91
270 Group Insurance – Self-Insurance				20,498.27
Total Personnel Services – Employee Benefits				\$20,537.18
500 <u>Other Purchased Services</u>				
595 IU Payments By Withholding				5,008.71
Total Other Purchased Services				\$5,008.71
Total 2900 Other Support Services				\$33,561.17

LEA : 113361503 Columbia Borough SD

Printed 11/7/2023 11:58:12 AM

General Fund (10)

2910 Support Services Not Listed Elsewhere In the 2000 Series	<u>Elementary</u>	<u>Secondary</u>	<u>Federal</u>	<u>Total</u>
100 <u>Personnel Services – Salaries</u>				
100 Personnel Services – Salaries				8,015.28
Total Personnel Services – Salaries				\$8,015.28
200 <u>Personnel Services – Employee Benefits</u>				
230 PSERS Retirement Contributions				38.91
270 Group Insurance – Self-Insurance				20,498.27
Total Personnel Services – Employee Benefits				\$20,537.18
500 <u>Other Purchased Services</u>				
595 IU Payments By Withholding				5,008.71
Total Other Purchased Services				\$5,008.71
Total 2910 Support Services Not Listed Elsewhere In the 2000 Series				\$33,561.17

LEA : 113361503 Columbia Borough SD

Printed 11/7/2023 11:58:19 AM

General Fund (10)	
3000 Operation of Non-Instructional Services	<u>Total</u>
100 <u>Personnel Services – Salaries</u>	
100 Personnel Services – Salaries	261,908.68
Total Personnel Services – Salaries	\$261,908.68
200 <u>Personnel Services – Employee Benefits</u>	
210 Group Insurance – Contracted Provider	51.21
220 Social Security Contributions	19,952.57
230 PSERS Retirement Contributions	73,529.74
260 Workers' Compensation	647.91
270 Group Insurance – Self-Insurance	3,162.00
Total Personnel Services – Employee Benefits	\$97,343.43
300 <u>Purchased Professional and Technical Services</u>	
330 Other Professional Services	382.50
340 Technical Services	20,534.00
350 Security / Safety Services	10,108.42
390 Other Purchased Professional and Technical Services	30,761.00
Total Purchased Professional and Technical Services	\$61,785.92
400 <u>Purchased Property Services</u>	
430 Repairs and Maintenance Services	11,735.00
440 Rentals	1,300.00
Total Purchased Property Services	\$13,035.00
500 <u>Other Purchased Services</u>	
510 Student Transportation Services	45,600.15
580 Travel	259.30
Total Other Purchased Services	\$45,859.45
600 <u>Supplies</u>	
610 General Supplies	178,097.53
630 Food	2,269.06
650 Supplies & Fees – Technology Related	3,987.06
Total Supplies	\$184,353.65
700 <u>Property</u>	
762 Capitalized Equipment - Replacement	34,561.00
Total Property	\$34,561.00
800 <u>Other Objects</u>	
810 Dues and Fees	7,538.88
Total Other Objects	\$7,538.88
Total 3000 Operation of Non-Instructional Services	\$706,386.01

LEA : 113361503 Columbia Borough SD

Printed 11/7/2023 11:58:19 AM

General Fund (10)

3200 Student Activities

	<u>Elementary</u>	<u>Secondary</u>	<u>Federal</u>	<u>Total</u>
100 <u>Personnel Services – Salaries</u>				
100 Personnel Services – Salaries				261,908.68
Total Personnel Services – Salaries				\$261,908.68
200 <u>Personnel Services – Employee Benefits</u>				
210 Group Insurance – Contracted Provider				51.21
220 Social Security Contributions				19,952.57
230 PSERS Retirement Contributions				73,529.74
260 Workers' Compensation				647.91
270 Group Insurance – Self-Insurance				3,162.00
Total Personnel Services – Employee Benefits				\$97,343.43
300 <u>Purchased Professional and Technical Services</u>				
330 Other Professional Services				382.50
340 Technical Services				20,534.00
390 Other Purchased Professional and Technical Services				30,761.00
Total Purchased Professional and Technical Services				\$51,677.50
400 <u>Purchased Property Services</u>				
430 Repairs and Maintenance Services				11,735.00
440 Rentals				1,300.00
Total Purchased Property Services				\$13,035.00
500 <u>Other Purchased Services</u>				
510 Student Transportation Services				45,600.15
580 Travel				217.30
Total Other Purchased Services				\$45,817.45
600 <u>Supplies</u>				
610 General Supplies				157,407.85
630 Food				38.25
650 Supplies & Fees – Technology Related				2,814.81
Total Supplies				\$160,260.91
700 <u>Property</u>				
762 Capitalized Equipment - Replacement				34,561.00
Total Property				\$34,561.00
800 <u>Other Objects</u>				
810 Dues and Fees				7,538.88
Total Other Objects				\$7,538.88
Total 3200 Student Activities				\$672,142.85

LEA : 113361503 Columbia Borough SD

Printed 11/7/2023 11:58:19 AM

General Fund (10)

3300 Community Services

Elementary Secondary Federal Total

300 <u>Purchased Professional and Technical Services</u>				
350 Security / Safety Services				10,108.42
Total Purchased Professional and Technical Services				\$10,108.42
500 <u>Other Purchased Services</u>				
580 Travel			42.00	42.00
Total Other Purchased Services			\$42.00	\$42.00
600 <u>Supplies</u>				
610 General Supplies			3,590.05	20,689.68
630 Food			2,230.81	2,230.81
650 Supplies & Fees – Technology Related				1,172.25
Total Supplies			\$5,820.86	\$24,092.74
Total 3300 Community Services			\$5,862.86	\$34,243.16

LEA : 113361503 Columbia Borough SD

Printed 11/7/2023 11:58:25 AM

General Fund (10)

4000 Facilities Acquisition, Construction and Improvement Services		<u>Total</u>
300 <u>Purchased Professional and Technical Services</u>		
330 Other Professional Services	3,375.00	
Total Purchased Professional and Technical Services	\$3,375.00	
400 <u>Purchased Property Services</u>		
410 Cleaning Services	10,257.00	
Total Purchased Property Services	\$10,257.00	
700 <u>Property</u>		
710 Land and Improvements	451,696.00	
Total Property	\$451,696.00	
Total 4000 Facilities Acquisition, Construction and Improvement Services	\$465,328.00	

LEA : 113361503 Columbia Borough SD

Printed 11/7/2023 11:58:25 AM

General Fund (10)

4200 Existing Site Improvement Services	<u>Elementary</u>	<u>Secondary</u>	<u>Federal</u>	<u>Total</u>
400 <u>Purchased Property Services</u>				
410 Cleaning Services				10,257.00
Total Purchased Property Services				\$10,257.00
700 <u>Property</u>				
710 Land and Improvements				451,696.00
Total Property				\$451,696.00
Total 4200 Existing Site Improvement Services				\$461,953.00

LEA : 113361503 Columbia Borough SD

Printed 11/7/2023 11:58:25 AM

General Fund (10)

4300 Architecture and Engineering Services / Educational Specifications Development – Original and Additional	<u>Elementary</u>	<u>Secondary</u>	<u>Federal</u>	<u>Total</u>
300 <u>Purchased Professional and Technical Services</u>				
330 Other Professional Services				1,000.00
Total Purchased Professional and Technical Services				\$1,000.00
Total 4300 Architecture and Engineering Services / Educational Specifications Development – Original and Additional				\$1,000.00

LEA : 113361503 Columbia Borough SD

Printed 11/7/2023 11:58:25 AM

General Fund (10)

4400 Architecture and Engineering Services / Educational Specifications – Improvements	<u>Elementary</u>	<u>Secondary</u>	<u>Federal</u>	<u>Total</u>
300 <u>Purchased Professional and Technical Services</u>				
330 Other Professional Services				2,375.00
Total Purchased Professional and Technical Services				\$2,375.00
Total 4400 Architecture and Engineering Services / Educational Specifications – Improvements				\$2,375.00

LEA : 113361503 Columbia Borough SD

Printed 11/7/2023 11:58:32 AM

General Fund (10)

5000 Other Expenditures and Financing Uses		<u>Total</u>
800 <u>Other Objects</u>		
830 Interest		330,725.00
880 Refunds of Prior Years' Receipts		6,609.82
Total Other Objects		\$337,334.82
900 <u>Other Uses of Funds</u>		
910 Redemption of Principal		2,300,000.00
932 Capital Reserve Fund Transfers Applicable To Fund 32		1,000,000.00
939 Other Fund Transfers		179.05
Total Other Uses of Funds		\$3,300,179.05
Total 5000 Other Expenditures and Financing Uses		\$3,637,513.87

LEA : 113361503 Columbia Borough SD

Printed 11/7/2023 11:58:32 AM

General Fund (10)

5100 Debt Service / Other Expenditures and Financing Uses	<u>Elementary</u>	<u>Secondary</u>	<u>Federal</u>	<u>Total</u>
800 <u>Other Objects</u>				
830 Interest				330,725.00
880 Refunds of Prior Years' Receipts				6,609.82
Total Other Objects				\$337,334.82
900 <u>Other Uses of Funds</u>				
910 Redemption of Principal				2,300,000.00
Total Other Uses of Funds				\$2,300,000.00
Total 5100 Debt Service / Other Expenditures and Financing Uses				\$2,637,334.82

LEA : 113361503 Columbia Borough SD

Printed 11/7/2023 11:58:32 AM

General Fund (10)

5110 Debt Service	<u>Elementary</u>	<u>Secondary</u>	<u>Federal</u>	<u>Total</u>
800 <u>Other Objects</u>				
830 Interest				330,725.00
Total Other Objects				\$330,725.00
900 <u>Other Uses of Funds</u>				
910 Redemption of Principal				2,300,000.00
Total Other Uses of Funds				\$2,300,000.00
Total 5110 Debt Service				\$2,630,725.00

LEA : 113361503 Columbia Borough SD

Printed 11/7/2023 11:58:32 AM

General Fund (10)

5130 Refund of Prior Year Revenues / Receipts	<u>Elementary</u>	<u>Secondary</u>	<u>Federal</u>	<u>Total</u>
800 <u>Other Objects</u>				
880 Refunds of Prior Years' Receipts				6,609.82
Total Other Objects				\$6,609.82
Total 5130 Refund of Prior Year Revenues / Receipts				\$6,609.82

LEA : 113361503 Columbia Borough SD

Printed 11/7/2023 11:58:32 AM

General Fund (10)

5200 Interfund Transfers – Out	<u>Elementary</u>	<u>Secondary</u>	<u>Federal</u>	<u>Total</u>
900 <u>Other Uses of Funds</u>				
932 Capital Reserve Fund Transfers Applicable To Fund 32				1,000,000.00
939 Other Fund Transfers				179.05
Total Other Uses of Funds				\$1,000,179.05
Total 5200 Interfund Transfers – Out				\$1,000,179.05

LEA : 113361503 Columbia Borough SD

Printed 11/7/2023 11:58:32 AM

General Fund (10)

5230 Capital Projects Fund Transfers	<u>Elementary</u>	<u>Secondary</u>	<u>Federal</u>	<u>Total</u>
900 <u>Other Uses of Funds</u>				
932 Capital Reserve Fund Transfers Applicable To Fund 32				1,000,000.00
Total Other Uses of Funds				\$1,000,000.00
Total 5230 Capital Projects Fund Transfers				\$1,000,000.00

LEA : 113361503 Columbia Borough SD

Printed 11/7/2023 11:58:32 AM

General Fund (10)

5250 Enterprise Fund Transfers	<u>Elementary</u>	<u>Secondary</u>	<u>Federal</u>	<u>Total</u>
900 <u>Other Uses of Funds</u>				
939 Other Fund Transfers				179.05
Total Other Uses of Funds				\$179.05
Total 5250 Enterprise Fund Transfers				\$179.05

LEA : 113361503 Columbia Borough SD

Printed 11/7/2023 11:58:28 AM

Capital Reserve Fund - § 1431 (32)

4000 Facilities Acquisition, Construction and Improvement Services

Total

300 Purchased Professional and Technical Services

330 Other Professional Services	1,400.00
---------------------------------	----------

Total Purchased Professional and Technical Services	\$1,400.00
---	------------

400 Purchased Property Services

450 Construction Services	2,820,911.63
---------------------------	--------------

Total Purchased Property Services	\$2,820,911.63
-----------------------------------	----------------

Total 4000 Facilities Acquisition, Construction and Improvement Services	\$2,822,311.63
--	----------------

LEA : 113361503 Columbia Borough SD

Printed 11/7/2023 11:58:28 AM

Capital Reserve Fund - § 1431 (32)

4200 Existing Site Improvement Services

Elementary

Secondary

Federal

Total

400 Purchased Property Services

450 Construction Services

150,915.00

Total Purchased Property Services				\$150,915.00
Total 4200 Existing Site Improvement Services				\$150,915.00

LEA : 113361503 Columbia Borough SD

Printed 11/7/2023 11:58:28 AM

Capital Reserve Fund - § 1431 (32)

4600 Existing Building Improvement Services	<u>Elementary</u>	<u>Secondary</u>	<u>Federal</u>	<u>Total</u>
300 <u>Purchased Professional and Technical Services</u>				
330 Other Professional Services				1,400.00
Total Purchased Professional and Technical Services				\$1,400.00
400 <u>Purchased Property Services</u>				
450 Construction Services				2,669,996.63
Total Purchased Property Services				\$2,669,996.63
Total 4600 Existing Building Improvement Services				\$2,671,396.63

LEA : 113361503 Columbia Borough SD

Printed 11/7/2023 11:58:35 AM

	<u>General Fund(10)</u>	<u>Student Sponsored Activity Fund(21)</u>	<u>Public Purpose Trust(27)</u>	<u>Other Compt Approved (28)</u>	<u>Athletic / Activity(29)</u>
1000 <u>Instruction</u>					
1100 Regular Programs - Elementary / Secondary	10,694,888.53				
1200 Special Programs - Elementary / Secondary	6,282,556.15				
1300 Vocational Education	438,921.18				
1400 Other Instructional Programs - Elementary / Secondary	109,525.83				
1500 Nonpublic School Programs	30,159.97				
Total Instruction	\$17,556,051.66				
2000 <u>Support Services</u>					
2100 Support Services - Students	1,365,792.40				
2200 Support Services - Instructional Staff	1,690,601.23				
2300 Support Services - Administration	2,029,694.56				
2400 Support Services - Pupil Health	444,813.16				
2500 Support Services - Business	266,034.74				
2600 Operation and Maintenance of Plant Services	2,483,349.21				
2700 Student Transportation Services	412,304.36				
2800 Support Services - Central	1,009,591.61				
2900 Other Support Services	33,561.17				
Total Support Services	\$9,735,742.44				
3000 <u>Operation of Non-Instructional Services</u>					
3200 Student Activities	672,142.85				
3300 Community Services	34,243.16				
Total Operation of Non-Instructional Services	\$706,386.01				
4000 <u>Facilities Acquisition, Construction and Improvement Services</u>					
4200 Existing Site Improvement Services	461,953.00				
4300 Architecture and Engineering Services / Educational Specifications Development - Original and Additional	1,000.00				
4400 Architecture and Engineering Services / Educational Specifications - Improvements	2,375.00				
4600 Existing Building Improvement Services					
Total Facilities Acquisition, Construction and Improvement Services	\$465,328.00				
5000 <u>Other Expenditures and Financing Uses</u>					
5100 Debt Service / Other Expenditures and Financing Uses	2,637,334.82				
5200 Interfund Transfers - Out	1,000,179.05				
Total Other Expenditures and Financing Uses	\$3,637,513.87				
TOTAL ACTUAL EXPENDITURES & OTHER FINANCING USES	\$32,101,021.98				

LEA : 113361503 Columbia Borough SD

Printed 11/7/2023 11:58:35 AM

	<u>Capital Reserve (690.</u>	<u>Capital Reserve (1431)(32)</u>	<u>Other Capital Projects</u>	<u>Debt Service(40)</u>	<u>Permanent(90)</u>
	<u>1850)(31)</u>		<u>Fund(39)</u>		
1000 <u>Instruction</u>					
1100 Regular Programs - Elementary / Secondary					
1200 Special Programs - Elementary / Secondary					
1300 Vocational Education					
1400 Other Instructional Programs - Elementary / Secondary					
1500 Nonpublic School Programs					
Total Instruction					
2000 <u>Support Services</u>					
2100 Support Services - Students					
2200 Support Services - Instructional Staff					
2300 Support Services - Administration					
2400 Support Services - Pupil Health					
2500 Support Services - Business					
2600 Operation and Maintenance of Plant Services					
2700 Student Transportation Services					
2800 Support Services - Central					
2900 Other Support Services					
Total Support Services					
3000 <u>Operation of Non-Instructional Services</u>					
3200 Student Activities					
3300 Community Services					
Total Operation of Non-Instructional Services					
4000 <u>Facilities Acquisition, Construction and Improvement Services</u>					
4200 Existing Site Improvement Services			150,915.00		
4300 Architecture and Engineering Services / Educational Specifications Development - Original and Additional					
4400 Architecture and Engineering Services / Educational Specifications - Improvements					
4600 Existing Building Improvement Services			2,671,396.63		
Total Facilities Acquisition, Construction and Improvement Services			\$2,822,311.63		
5000 <u>Other Expenditures and Financing Uses</u>					
5100 Debt Service / Other Expenditures and Financing Uses					
5200 Interfund Transfers - Out					
Total Other Expenditures and Financing Uses					
TOTAL ACTUAL EXPENDITURES & OTHER FINANCING USES			\$2,822,311.63		

LEA : 113361503 Columbia Borough SD

Printed 11/7/2023 11:58:35 AM

	<u>Total</u>
1000 <u>Instruction</u>	
1100 Regular Programs - Elementary / Secondary	10,694,888.53
1200 Special Programs - Elementary / Secondary	6,282,556.15
1300 Vocational Education	438,921.18
1400 Other Instructional Programs - Elementary / Secondary	109,525.83
1500 Nonpublic School Programs	30,159.97
Total Instruction	\$17,556,051.66
2000 <u>Support Services</u>	
2100 Support Services - Students	1,365,792.40
2200 Support Services - Instructional Staff	1,690,601.23
2300 Support Services - Administration	2,029,694.56
2400 Support Services - Pupil Health	444,813.16
2500 Support Services - Business	266,034.74
2600 Operation and Maintenance of Plant Services	2,483,349.21
2700 Student Transportation Services	412,304.36
2800 Support Services - Central	1,009,591.61
2900 Other Support Services	33,561.17
Total Support Services	\$9,735,742.44
3000 <u>Operation of Non-Instructional Services</u>	
3200 Student Activities	672,142.85
3300 Community Services	34,243.16
Total Operation of Non-Instructional Services	\$706,386.01
4000 <u>Facilities Acquisition, Construction and Improvement Services</u>	
4200 Existing Site Improvement Services	612,868.00
4300 Architecture and Engineering Services / Educational Specifications Development - Original and Additional	1,000.00
4400 Architecture and Engineering Services / Educational Specifications - Improvements	2,375.00
4600 Existing Building Improvement Services	2,671,396.63
Total Facilities Acquisition, Construction and Improvement Services	\$3,287,639.63
5000 <u>Other Expenditures and Financing Uses</u>	
5100 Debt Service / Other Expenditures and Financing Uses	2,637,334.82
5200 Interfund Transfers - Out	1,000,179.05
Total Other Expenditures and Financing Uses	\$3,637,513.87
TOTAL ACTUAL EXPENDITURES & OTHER FINANCING USES	\$34,923,333.61

LEA : 113361503 Columbia Borough SD

Printed 11/7/2023 11:58:46 AM

PSERS Salary Data (Salary Data should relate to the General Fund only)

Amount	Description	Amount
	Total Salary Base for salaries subject to PSERS withholding	9,306,497.79
	Total Federally Funded salaries subject to PSERS withholding	3,216,898.64

Title I Expenditure Data

Amount	Description	Amount
	Expenditures Funded with Current Title I Funds	732,446.06
	Expenditures Funded with Carry over Title I Funds	12,465.77
Total	Title I Expenditure Data	\$744,911.83

Title IV Revenue Data

Amount	Description	Amount
	Revenue from Title IV-A-1: Student Support and Academic Enrichment Grants	56,611.26
	Revenue from Title IV-B: 21st Century Community Learning Centers	

Title V Revenue Data

Amount	Description	Amount
	Revenue from Title V-B-2: Rural and Low-Income School Programs	
	Revenue from Title V-B-1: Small Rural School Achievement (Directly from the Federal Govt)	

1 .	<u>Current Special Education Expenditures within Function 1000</u> See list of exclusions in the note below.	3,940,696.42
2 .	<u>Current Special Education Expenditures within Function 2000</u> See list of exclusions in the note below.	1,920,361.07
2A.	<u>Current Special Education Expenditures within Sub-Function 2100</u> This data should also be included in line 2 above. See list of exclusions in the note below.	507,400.93
2B.	<u>Current Special Education Expenditures within Sub-Function 2200</u> This data should also be included in line 2 above. See list of exclusions in the note below.	408,665.37
2C.	<u>Current Special Education Expenditures within Sub-Function 2700</u> This data should also be included in line 2 above. See list of exclusions in the note below.	365,455.12
3.	<u>Current Special Education Expenditures within Sub-Function 3100</u> See list of exclusions in the note below.	
4.	<u>Current Special Education Expenditures within Sub-Function 3200</u> See list of exclusions in the note below.	

Note: The Current Special Education Expenditure amounts for each line should be calculated as follows:

- * Include the total expenditures for special education costs from all governmental funds and the food service fund 51 for the function/sub-function requested
- * Exclude data from sub-functions: 1243,1450,1500,1600,1807,2280,2450,2750,2990
- * Exclude data from objects: 322,511,512,516,561,562,564,566,592,593,594,595,596,597,700,830,899

Benefits for Staff Relative to Collective Bargaining Agreements

	OBJECT	COVERED	NOT COVERED	TOTAL
10 General Fund	No Self Insurance data to report			
	211 Medical Insurance			
	212 Dental Insurance			
	215 Eye Care Insurance			
	216 Prescription Insurance			
	271 Self-Insurance Medical Benefits			
	272 Self-Insurance Dental Benefits			
	275 Self-Insurance Eye Care Benefits			
	276 Self-Insurance Prescription Benefits			
	FUND TOTAL			
50 Enterprise Fund	No Self Insurance data to report			
	211 Medical Insurance			
	212 Dental Insurance			
	215 Eye Care Insurance			
	216 Prescription Insurance			
	271 Self-Insurance Medical Benefits			
	272 Self-Insurance Dental Benefits			
	275 Self-Insurance Eye Care Benefits			
	276 Self-Insurance Prescription Benefits			
	FUND TOTAL			
60 Internal Service Fund				
	211 Medical Insurance			
	212 Dental Insurance			
	215 Eye Care Insurance			
	216 Prescription Insurance			
	271 Self-Insurance Medical Benefits	1,187,995.38	439,395.55	1,627,390.93
	272 Self-Insurance Dental Benefits	64,494.92	23,854.29	88,349.21
	275 Self-Insurance Eye Care Benefits			
	276 Self-Insurance Prescription Benefits	123,651.08	45,733.96	169,385.04
	FUND TOTAL	\$1,376,141.38	\$508,983.80	\$1,885,125.18
Total of All Funds		\$1,376,141.38	\$508,983.80	\$1,885,125.18

LEA : 113361503 Columbia Borough SD

Printed 11/7/2023 11:59:01 AM

Function	Special Education (Prior Year)	Nonspecial Education (Prior Year)	Total (Prior Year)	Special Education (Current Year)	Nonspecial Education (Current Year)	Total (Current Year)
2120 Guidance Services	193,835.12	353,248.44	547,083.56	235,620.82	402,845.54	638,466.36
2140 Psychological Services	285,423.95		285,423.95	294,890.79		294,890.79
2150 Speech Pathology and Audiology Services						
2160 Social Work Services	52,451.90	78,677.86	131,129.76	48,345.54	72,518.31	120,863.85
2260 Instruction and Curriculum Development Services	266,140.77	407,301.91	673,442.68	383,865.31	795,646.06	1,179,511.37
2350 Legal and Accounting Services	1,665.67	53,691.57	55,357.24	4,757.17	41,508.07	46,265.24
2420 Medical Services	96,420.25	5,900.00	102,320.25	117,066.47	947.98	118,014.45
2440 Nursing Services	135,335.31	230,143.82	365,479.13	129,928.45	196,870.26	326,798.71
2700 Student Transportation Services	351,258.90	6,283.97	357,542.87	366,072.61	46,231.75	412,304.36
Total	\$1,382,531.87	\$1,135,247.57	\$2,517,779.44	\$1,580,547.16	\$1,556,567.97	\$3,137,115.13

LEA : 113361503 Columbia Borough SD

Printed 11/7/2023 11:59:05 AM

	(PRINCIPAL AMOUNTS ONLY)							
<u>GOVERNMENTAL FUNDS/ ACTIVITIES</u>	Short-Term Borrowing	General Obligation Bonds/Notes	Authority Building Obligations	Leases, Other Right to Use Arrangements	Extended Term Financing Agreements	Other Long Term Debt/Liabilities	OPEB, Comp Abs, Net Pension Liab	Total
1. Debt at Beginning of Fiscal Year		11,455,000.00				149,454.40	26,833,153.00	38,437,607.40
2. Additional Debt Incurred During Year							3,715,700.00	3,715,700.00
3. Retirements and Repayments		2,300,000.00				8,398.40	958,990.00	3,267,388.40
4. Debt at End of Fiscal Year		9,155,000.00				141,056.00	29,589,863.00	38,885,919.00
5. Accreted Interest at End Of Fiscal Year								
6. Total Debt and Accreted Interest		9,155,000.00				141,056.00	29,589,863.00	38,885,919.00
7. Current Portion P&I - Due within 1 year		2,631,475.00				12,638.57	2,055.00	2,646,168.57
8. Interest Paid during current fiscal year		330,725.00				4,293.30		335,018.30

(PRINCIPAL AMOUNTS ONLY)								
<u>PROPRIETARY FUNDS</u>	Short-Term Borrowing	General Obligation Bonds/Notes	Authority Building Obligations	Leases, Other Right to Use Arrangements	Extended Term Financing Agreements	Other Long Term Debt/Liabilities	OPEB, Comp Abs, Net Pension Liab	Total
1. Debt at Beginning of Fiscal Year							715,424.00	715,424.00
2. Additional Debt Incurred During Year							169,488.00	169,488.00
3. Retirements and Repayments							3,985.00	3,985.00
4. Debt at End of Fiscal Year							880,927.00	880,927.00
5. Accreted Interest at End Of Fiscal Year								
6. Total Debt and Accreted Interest							880,927.00	880,927.00
7. Current Portion P&I - Due within 1 year								
8. Interest Paid during current fiscal year								

LEA : 113361503 Columbia Borough SD

Total Principal and Interest Payments Made by Your School - All Funds

Function	Fund		Principal (910)	Principal (920)	Interest (830)	Total (Principal +Interest)	Misc Other Uses (990)
5110	10	General Fund	2,300,000.00		330,725.00	2,630,725.00	
5110	20	Special Revenue Funds					
5110	30	Capital Projects Funds					
5110	40	Debt Service Fund					
5110	90	Permanent Fund					
5120	10	General Fund					
5120	20	Special Revenue Funds					
5120	30	Capital Projects Funds					
5120	40	Debt Service Fund					
5140	10	General Fund					
5140	20	Special Revenue Funds					
5140	30	Capital Projects Funds					
5140	40	Debt Service Fund					
5140	90	Permanent Fund					
Total Debt Payments - Governmental Funds			\$2,300,000.00		\$330,725.00	\$2,630,725.00	

Function	Fund		Principal (910)	Principal (920)	Interest (830)	Total (Principal +Interest)
5110	50	Enterprise Fund				
5110	60	Internal Service Fund				
5120	50	Enterprise Fund				
5120	60	Internal Service Fund				
5140	50	Enterprise Fund				
5140	60	Internal Service Fund				
Total Debt Payments - Proprietary Funds						

LEA : 113361503 Columbia Borough SD

Printed 11/7/2023 11:59:05 AM

Debt Details
Governmental Funds/ Activities

Debt Category	Debt Issue Date (MM/YYYY)	Principal Amounts Only				Current Portion Due Within One Year (Principal and Interest)	Interest Paid During Fiscal Year
		Debt at Beginning of Fiscal Year	Additions	Reductions / Repayments	Debt at End of Fiscal Year		
General Obligation Bonds/Notes – CIB	11/2020	8,815,000.00		510,000.00	8,305,000.00	1,755,475.00	233,125.00
General Obligation Bonds/Notes – CIB	11/2019	2,640,000.00		1,790,000.00	850,000.00	876,000.00	97,600.00
Other Long Term Debt/Liabilities		149,454.40		8,398.40	141,056.00	12,638.57	4,293.30
Compensated Absences		133,733.00	1,976.00		135,709.00	2,055.00	
Other Post-Employment Benefits (OPEB)		3,644,881.00	360,805.00	958,990.00	3,046,696.00		
Net Pension Liability		23,054,539.00	3,352,919.00		26,407,458.00		
Totals for Debt Entered:		\$38,437,607.40	\$3,715,700.00	\$3,267,388.40	\$38,885,919.00	\$2,646,168.57	\$335,018.30

Bond Details
Proprietary Funds

Debt Category	Debt Issue Date (MM/YYYY)	Principal Amounts Only				Current Portion Due Within One Year (Principal and Interest)	Interest Paid During Fiscal Year
		Debt at Beginning of Fiscal Year	Additions	Reductions / Repayments	Debt at End of Fiscal Year		
Other Post-Employment Benefits (OPEB)		39,173.00		3,985.00	35,188.00		
Net Pension Liability		676,251.00	169,488.00		845,739.00		
Totals for Debt Entered:		\$715,424.00	\$169,488.00	\$3,985.00	\$880,927.00		

LEA : 113361503 Columbia Borough SD

General Fund (10)

Section 1: Tuition/Purchased Services as Reported within Expenditure Detail	Amount
Tuition Reported in General Fund Expenditures 1000-560	2,533,607.67
Purchased Services in General Fund Expenditures 1000-594 and 1000-597	
Section 1 Total	\$2,533,607.67

Section 2: Tuition Paid to Institution Types During Fiscal Year	Tuition Paid For Nonspecial Education	Tuition Paid For Special Education	Total
1 1306 Institutions			
2 Institutionalized Children's Programs			
3 Juveniles Incarcerated in Adult Facilities			
4 Residential Treatment Facilities			
5 Other Local Education Agencies	58,881.83	147,311.61	206,193.44
6 Brick and Mortar Charter Schools	14,818.54		14,818.54
7 Cyber Charter Schools	521,244.25	1,007,967.99	1,529,212.24
8 Career and Technology Centers	241,406.65	197,514.53	438,921.18
9 Approved Private Schools			
10 PA Chartered Schools for the Deaf and Blind			
11 Private Residential Rehabilitative Institutions		13,049.27	13,049.27
12 Juvenile Detention Centers			
13 Special Program Jointures			
14 Other Tuition Not Included Elsewhere In This Section	24,657.68	306,755.32	331,413.00
Section 2 Total	\$861,008.95	\$1,672,598.72	\$2,533,607.67

LEA : 113361503 Columbia Borough SD

Printed 11/7/2023 11:59:11 AM

Food Service / Cafeteria Operations Fund (51)

2000 Support Services	<u>Total</u>
800 <u>Other Objects</u>	
810 Dues and Fees	200.00
Total Other Objects	\$200.00
Total 2000 Support Services	\$200.00

LEA : 113361503 Columbia Borough SD

Printed 11/7/2023 11:59:11 AM

Food Service / Cafeteria Operations Fund (51)

2800 Support Services – Central	<u>Elementary</u>	<u>Secondary</u>	<u>Federal</u>	<u>Total</u>
800 <u>Other Objects</u>				
810 Dues and Fees				200.00
Total Other Objects				\$200.00
Total 2800 Support Services – Central				\$200.00

LEA : 113361503 Columbia Borough SD

Printed 11/7/2023 11:59:11 AM

Food Service / Cafeteria Operations Fund (51)

2830 Staff Services	<u>Elementary</u>	<u>Secondary</u>	<u>Federal</u>	<u>Total</u>
800 <u>Other Objects</u>				
810 Dues and Fees				200.00
Total Other Objects				\$200.00
Total 2830 Staff Services				\$200.00

LEA : 113361503 Columbia Borough SD

Printed 11/7/2023 11:59:11 AM

Food Service / Cafeteria Operations Fund (51)

2836 Staff Development Services – Non-Instructional, Non-Certified Staff Only	<u>Elementary</u>	<u>Secondary</u>	<u>Federal</u>	<u>Total</u>
800 <u>Other Objects</u>				
810 Dues and Fees				200.00
Total Other Objects				\$200.00
Total 2836 Staff Development Services – Non-Instructional, Non-Certified Staff Only				\$200.00

LEA : 113361503 Columbia Borough SD

Printed 11/7/2023 11:59:21 AM

Food Service / Cafeteria Operations Fund (51)

3000 Operation of Non-Instructional Services		Total
100	<u>Personnel Services – Salaries</u>	
100	Personnel Services – Salaries	302,069.98
Total Personnel Services – Salaries		\$302,069.98
200	<u>Personnel Services – Employee Benefits</u>	
210	Group Insurance – Contracted Provider	127.56
220	Social Security Contributions	22,786.42
230	PSERS Retirement Contributions	135,020.14
260	Workers' Compensation	1,687.68
270	Group Insurance – Self-Insurance	54,686.20
Total Personnel Services – Employee Benefits		\$214,308.00
300	<u>Purchased Professional and Technical Services</u>	
329	Professional Educational Services – Other	5,586.09
330	Other Professional Services	2,152.44
Total Purchased Professional and Technical Services		\$7,738.53
400	<u>Purchased Property Services</u>	
430	Repairs and Maintenance Services	21,525.15
Total Purchased Property Services		\$21,525.15
500	<u>Other Purchased Services</u>	
540	Advertising	5,973.46
570	Food Service Management	35,123.81
580	Travel	49.40
Total Other Purchased Services		\$41,146.67
600	<u>Supplies</u>	
610	General Supplies	52,847.72
620	Energy	146.77
630	Food	466,168.73
650	Supplies & Fees – Technology Related	6,573.83
Total Supplies		\$525,737.05
700	<u>Property</u>	
740	Depreciation	11,654.24
Total Property		\$11,654.24
800	<u>Other Objects</u>	
810	Dues and Fees	50.00
Total Other Objects		\$50.00
Total 3000 Operation of Non-Instructional Services		\$1,124,229.62

LEA : 113361503 Columbia Borough SD

Printed 11/7/2023 11:59:21 AM

Food Service / Cafeteria Operations Fund (51)

3100 Food Services	Elementary	Secondary	Federal	Total
100 Personnel Services – Salaries				
100 Personnel Services – Salaries			302,069.98	302,069.98
Total Personnel Services – Salaries			\$302,069.98	\$302,069.98
200 Personnel Services – Employee Benefits				
210 Group Insurance – Contracted Provider			127.56	127.56
220 Social Security Contributions			22,786.42	22,786.42
230 PSERS Retirement Contributions			101,974.00	135,020.14
260 Workers' Compensation			1,687.68	1,687.68
270 Group Insurance – Self-Insurance			54,686.20	54,686.20
Total Personnel Services – Employee Benefits			\$181,261.86	\$214,308.00
300 Purchased Professional and Technical Services				
329 Professional Educational Services – Other			5,586.09	5,586.09
330 Other Professional Services			2,152.44	2,152.44
Total Purchased Professional and Technical Services			\$7,738.53	\$7,738.53
400 Purchased Property Services				
430 Repairs and Maintenance Services			21,525.15	21,525.15
Total Purchased Property Services			\$21,525.15	\$21,525.15
500 Other Purchased Services				
540 Advertising			5,973.46	5,973.46
570 Food Service Management			35,123.81	35,123.81
580 Travel			49.40	49.40
Total Other Purchased Services			\$41,146.67	\$41,146.67
600 Supplies				
610 General Supplies			4,580.37	52,847.72
620 Energy			146.77	146.77
630 Food			466,168.73	466,168.73
650 Supplies & Fees – Technology Related			6,573.83	6,573.83
Total Supplies			\$477,469.70	\$525,737.05
700 Property				
740 Depreciation			11,654.24	11,654.24
Total Property			\$11,654.24	\$11,654.24
800 Other Objects				
810 Dues and Fees			50.00	50.00
Total Other Objects			\$50.00	\$50.00
Total 3100 Food Services			\$1,042,916.13	\$1,124,229.62

LEA : 113361503 Columbia Borough SD

Printed 11/7/2023 11:59:15 AM

Internal Service Fund (60)

2000 Support Services

Total

200 Personnel Services – Employee Benefits

270 Group Insurance – Self-Insurance	1,885,125.18
--------------------------------------	--------------

292 Health Savings Accounts	239,794.50
-----------------------------	------------

Total Personnel Services – Employee Benefits		\$2,124,919.68
Total 2000 Support Services		\$2,124,919.68

LEA : 113361503 Columbia Borough SD

Printed 11/7/2023 11:59:15 AM

Internal Service Fund (60)

2900 Other Support Services

Elementary Secondary Federal Total

200 <u>Personnel Services – Employee Benefits</u>				
270 Group Insurance – Self-Insurance				1,885,125.18
292 Health Savings Accounts				239,794.50
Total Personnel Services – Employee Benefits				\$2,124,919.68
Total 2900 Other Support Services				\$2,124,919.68

LEA : 113361503 Columbia Borough SD

Printed 11/7/2023 11:59:15 AM

Internal Service Fund (60)

2910 Support Services Not Listed Elsewhere In the 2000 Series

Elementary Secondary Federal Total

200 <u>Personnel Services – Employee Benefits</u>				
270 Group Insurance – Self-Insurance				1,885,125.18
292 Health Savings Accounts				239,794.50
Total Personnel Services – Employee Benefits				\$2,124,919.68
Total 2910 Support Services Not Listed Elsewhere In the 2000 Series				\$2,124,919.68

	<u>Food Service(51)</u>	<u>Child Care Operations(52)</u>	<u>Other Enterprise(58)</u>	<u>Internal Service(60)</u>	<u>Total</u>
2000 <u>Support Services</u>					
2800 Support Services - Central	200.00				200.00
2900 Other Support Services				2,124,919.68	2,124,919.68
Total Support Services	\$200.00			\$2,124,919.68	\$2,125,119.68
3000 <u>Operation of Non-Instructional Services</u>					
3100 Food Services	1,124,229.62				1,124,229.62
Total Operation of Non-Instructional Services	\$1,124,229.62				\$1,124,229.62
TOTAL ACTUAL EXPENDITURES & OTHER FINANCING USES	\$1,124,429.62			\$2,124,919.68	\$3,249,349.30

LEA : 113361503 Columbia Borough SD

Printed 11/7/2023 11:59:30 AM

Fund	School	School Number	Local Personnel	Local Nonpersonnel	State Personnel	State Nonpersonnel	Federal Personnel	Federal Nonpersonnel	Total	Explanation
10										
	Columbia HS	2515	2,424,462.85	803,541.53	3,016,740.16	999,840.45	735,989.95	149,832.58	8,130,407.52	
	Columbia MS Hill Campus	8502	877,737.41	311,709.05	1,092,161.79	387,857.13	353,442.38	101,202.76	3,124,110.52	
	Columbia MS Taylor Campus	8501	713,427.84	423,635.81	887,712.69	527,126.73	961,468.18	108,956.39	3,622,327.64	
	Park El Sch	7056	1,690,283.36	907,522.55	2,103,206.36	1,129,223.22	2,417,982.72	326,516.31	8,574,734.52	
Total			5,705,911.46	2,446,408.94	7,099,821.00	3,044,047.53	4,468,883.23	686,508.04	23,451,580.20	