



PERKINS MEASURES

HELP

1S1: Four-Year Graduation Rate: The percentage of CTE concentrators who graduate high school as measured by the four-year adjusted cohort graduation rate (as defined in Section 8101 of the Elementary and Secondary Education Act of 1965).

1S2: Extended Graduation Rate: The percentage of CTE concentrators who graduate high school as measured by the extended-year adjusted graduation rate as defined in such Section 8101 (within six years of entering high school).

2S1: Academic Proficiency in Reading: CTE concentrator proficiency in the challenging state academic standards adopted by the state under Section 1111(b)(1) of the ESEA of 1965, as measured by the academic assessments in reading/language arts as described in Section 1111(b)(2) of such Act.

2S2: Academic Proficiency in Mathematics: CTE concentrator proficiency in the challenging state academic standards adopted by the state under Section 1111(b)(1) of the ESEA of 1965, as measured by the academic assessments in mathematics as described in Section 1111(b)(2) of such Act.

2S3: Academic Proficiency in Science: CTE concentrator proficiency in the challenging state academic standards adopted by the state under Section 1111(b)(1) of the ESEA of 1965, as measured by the academic assessments in science as described in Section 1111(b)(2) of such Act.

3S1: Post-Program Placement: The percentage of CTE concentrators who, in the second quarter after exiting from secondary education, are in post secondary education or advanced training, military service, or a service program that receives assistance under Title I of the National and Community Service Act of 1990 (42 U.S.C. 12511 et seq.), are volunteers as described in Section 5(a) of the Peace Corps Act (22 U.S.C. 2504(a)), or are employed (these data are not yet available).

4S1: Nontraditional Program: The percentage of CTE concentrators in CTE programs and programs of study that lead to fields in which their gender is underrepresented.

5S2: Program Quality – Attained Post secondary Credits: The percentage of CTE concentrators graduating from high school having attained post secondary credits in the relevant career and technical education program or program of study earned through a dual or concurrent enrollment or another credit transfer agreement.

5S3: Program Quality – Work-Based Learning: The percentage of CTE concentrators graduating from high school having participated in work-based learning.

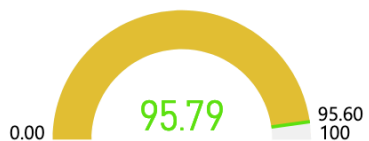


PERKINS MEASURES 2023

State

HELP

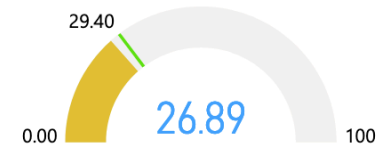
1S1: Four-Year Graduation Rate



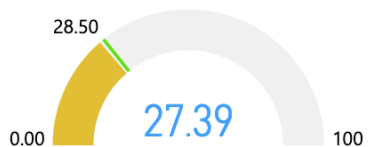
1S2: Extended Graduation Rate



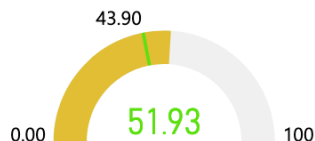
2S1: Academic Proficiency in Reading



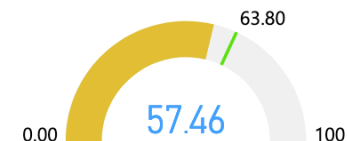
2S2: Academic Proficiency in Mathematics



2S3: Academic Proficiency in Science



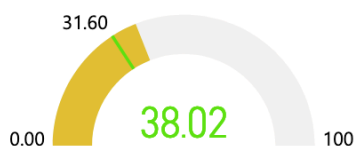
3S1: Post-Program Placement



4S1: Nontraditional Program



5S2: Program Quality Attained Postsecondary Credits



5S3: Program Quality – Work-Based Learning





PERKINS MEASURES 2023

District

HELP

District

North Greene CUSD 3

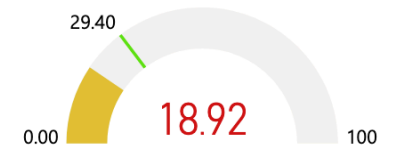
1S1: Four-Year Graduation Rate



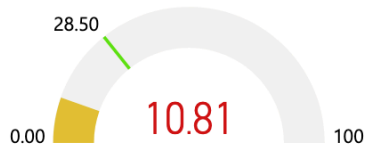
1S2: Extended Graduation Rate



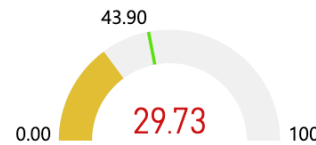
2S1: Academic Proficiency in Reading



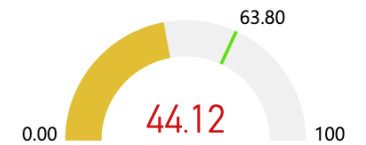
2S2: Academic Proficiency in Mathematics



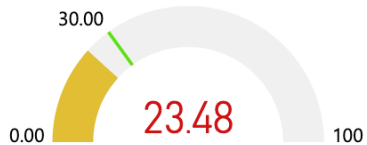
2S3: Academic Proficiency in Science



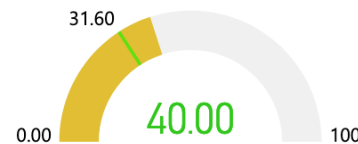
3S1: Post-Program Placement



4S1: Nontraditional Program



5S2: Program Quality Attained Postsecondary Credits



5S3: Program Quality – Work-Based Learning





PERKINS MEASURES 2023

Region

HELP

Region EFE

Central Ill Rural Region

1S1: Four-Year Graduation Rate



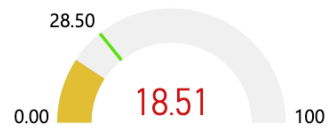
1S2: Extended Graduation Rate



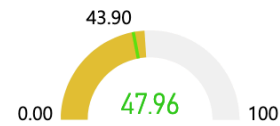
2S1: Academic Proficiency in Reading



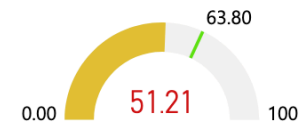
2S2: Academic Proficiency in Mathematics



2S3: Academic Proficiency in Science



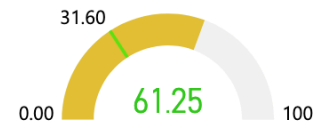
3S1: Post-Program Placement



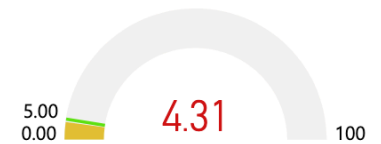
4S1: Nontraditional Program



5S2: Program Quality Attained Postsecondary Credits



5S3: Program Quality – Work-Based Learning





PERKINS MEASURES 2023

School

HELP



School
North Greene Jr/Sr High Sch - Greene

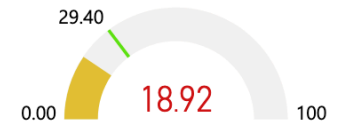
1S1: Four-Year Graduation Rate



1S2: Extended Graduation Rate



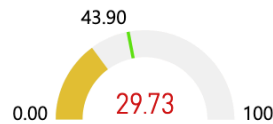
2S1: Academic Proficiency in Reading



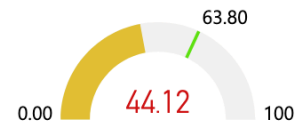
2S2: Academic Proficiency in Mathematics



2S3: Academic Proficiency in Science



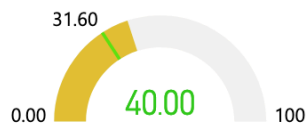
3S1: Post-Program Placement



4S1: Nontraditional Program



5S2: Program Quality Attained Postsecondary Credits



5S3: Program Quality – Work-Based Learning





PERKINS MEASURES 2023

Special Populations

HELP

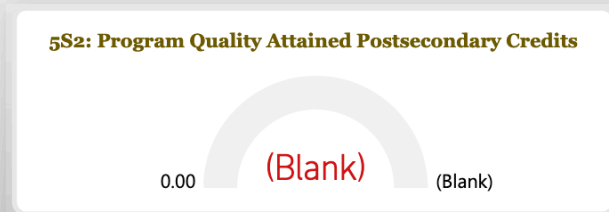
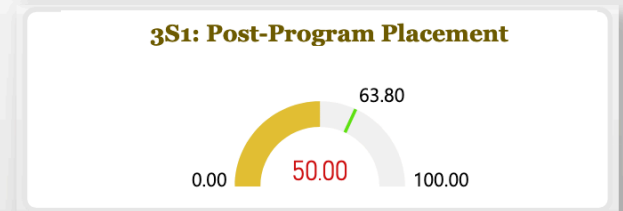
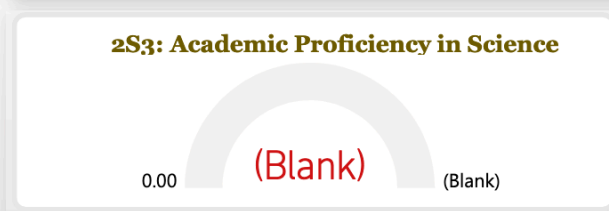
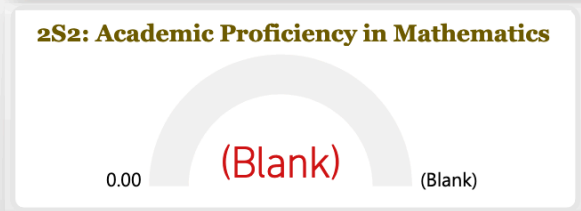
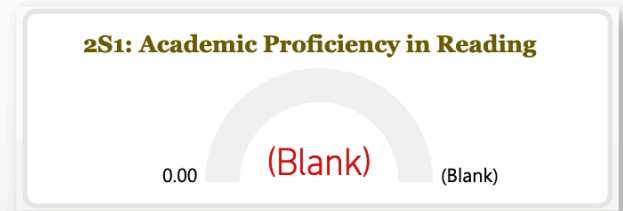
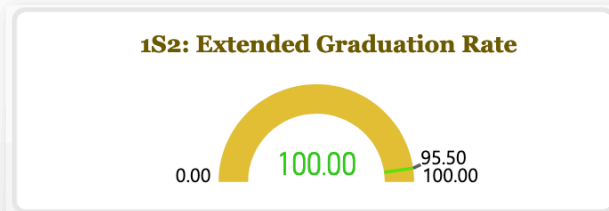
Special Populations
Foster

State
IL

Region EFE
CENTRAL ILL RURAL ...

District
North Greene CUSD 3

School
North Greene Jr/Sr High Sch - Gree...





PERKINS MEASURES 2023

Special Populations

HELP

Special Populations

Homeless

State

IL

Region EFE

CENTRAL ILL RURAL ...

District

North Greene CUSD 3

School

North Greene Jr/Sr High Sch - Gree...

1S1: Four-Year Graduation Rate



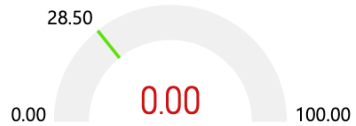
1S2: Extended Graduation Rate



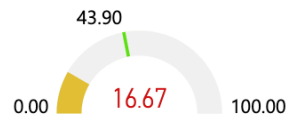
2S1: Academic Proficiency in Reading



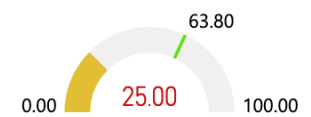
2S2: Academic Proficiency in Mathematics



2S3: Academic Proficiency in Science



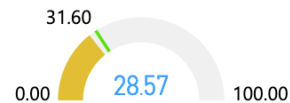
3S1: Post-Program Placement



4S1: Nontraditional Program



5S2: Program Quality Attained Postsecondary Credits



5S3: Program Quality – Work-Based Learning





PERKINS MEASURES 2023

Special Populations

HELP

Special Populations

Low-Income

State

IL

Region EFE

CENTRAL ILL RURAL ...

District

North Greene CUSD 3

School

North Greene Jr/Sr High Sch - Gree...

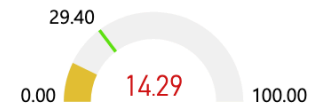
1S1: Four-Year Graduation Rate



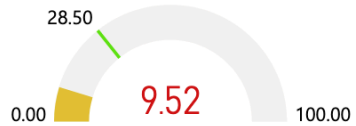
1S2: Extended Graduation Rate



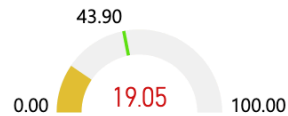
2S1: Academic Proficiency in Reading



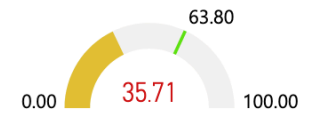
2S2: Academic Proficiency in Mathematics



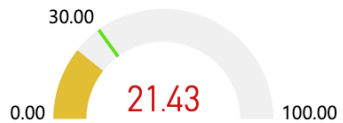
2S3: Academic Proficiency in Science



3S1: Post-Program Placement



4S1: Nontraditional Program



5S2: Program Quality Attained Postsecondary Credits



5S3: Program Quality – Work-Based Learning





PERKINS MEASURES 2023

Special Populations

HELP

Special Populations

Military

State

IL

Region EFE

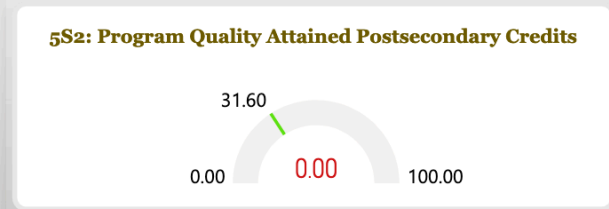
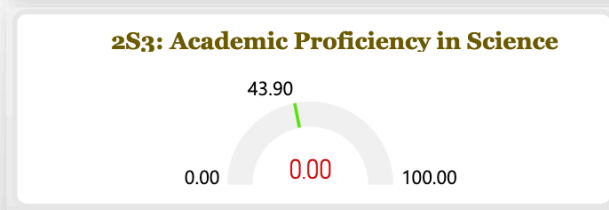
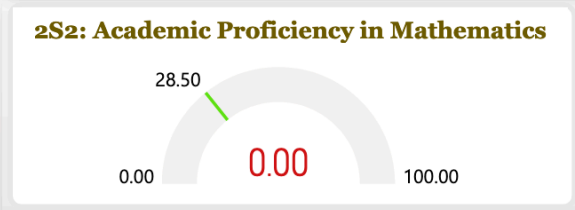
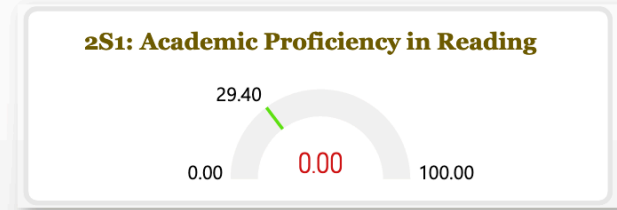
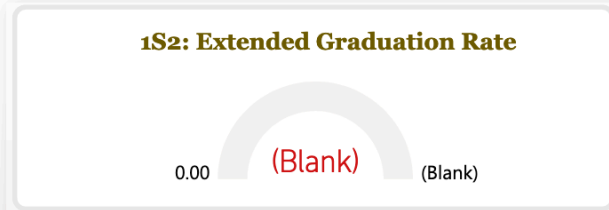
CENTRAL ILL RURAL ...

District

North Greene CUSD 3

School

North Greene Jr/Sr High Sch - Gree...





PERKINS MEASURES 2023

Special Populations

HELP

Special Populations

Non-Traditional

State

IL

Region EFE

CENTRAL ILL RURAL ...

District

North Greene CUSD 3

School

North Greene Jr/Sr High Sch - Gree...

1S1: Four-Year Graduation Rate



1S2: Extended Graduation Rate



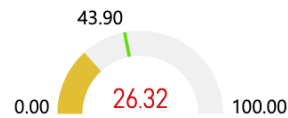
2S1: Academic Proficiency in Reading



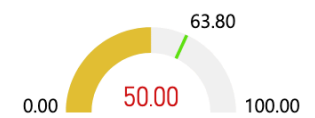
2S2: Academic Proficiency in Mathematics



2S3: Academic Proficiency in Science



3S1: Post-Program Placement



4S1: Nontraditional Program



5S2: Program Quality Attained Postsecondary Credits



5S3: Program Quality – Work-Based Learning





PERKINS MEASURES 2023

Special Populations

HELP

Special Populations

Special Ed

State

IL

Region EFE

CENTRAL ILL RURAL ...

District

North Greene CUSD 3

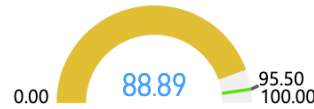
School

North Greene Jr/Sr High Sch - Gree...

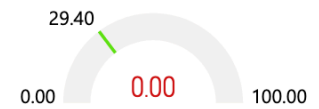
1S1: Four-Year Graduation Rate



1S2: Extended Graduation Rate



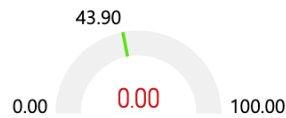
2S1: Academic Proficiency in Reading



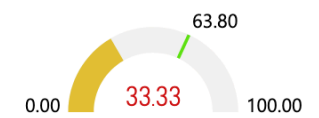
2S2: Academic Proficiency in Mathematics



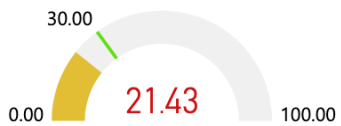
2S3: Academic Proficiency in Science



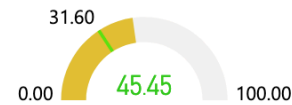
3S1: Post-Program Placement



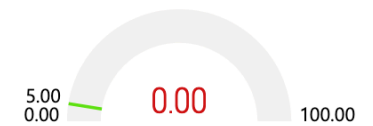
4S1: Nontraditional Program



5S2: Program Quality Attained Postsecondary Credits



5S3: Program Quality – Work-Based Learning





PERKINS MEASURES 2023

Comparisons

HELP

	State		Region EFE		District		School		
	IL		Central III Rural Region		North Greene CUS...		North Greene Jr/Sr High Sch - Greene		
	151	152	251	252	253	351	451	552	553
State	95.79%	95.56%	26.89%	27.39%	51.93%	57.46%	30.84%	38.02%	10.31%
Region	95.87%	94.13%	21.13%	18.51%	47.96%	51.21%	36.36%	61.25%	4.31%
District	94.74%	93.33%	18.92%	10.81%	29.73%	44.12%	23.48%	40%	0%
School	94.74%	93.33%	18.92%	10.81%	29.73%	44.12%	23.48%	40%	0%