

Home / HINTON / HINTON HS

Translate
INDICATORS

ADDRESS

2021 - 2022 ▼

HINTON HS

09 - 12 Grades

- OVERVIEW
- INDICATORS ▼
- ABOUT OUR SCHOOL ▼
- YOUR STUDENT
- DATA MATRIX

PRINCIPAL
JARROD HOHMANN

ENROLLMENT
217 (2022)

PHONE
(405) 542-3235

WEBSITE

WWW.HINTONSCHOOLS.ORG

* Enrollment as of October 1st for the 2021 - 2022 school year.

PROGRAMS OF EXCELLENCE

In 2019, schools identified up to three Programs of Excellence areas as priorities. These priority areas indicate the intent of the school to plan, implement, and evaluate activities that support the whole child. In future years, schools will be able to self-identify as Programs of Excellence at one of three levels - bronze, silver, or gold - with input from staff, school leadership, and stakeholders. When available, these identifications will be reflected here.



Computer Science



English Language Arts



Fine Arts



Mathematics



Safe and Healthy Schools



Science



Social Studies and Civics



World Languages

RELATED PROGRAMS

Programs included here support a well-rounded education and are reported by the school. For more information, please visit the school's website.

✔ indicates available program

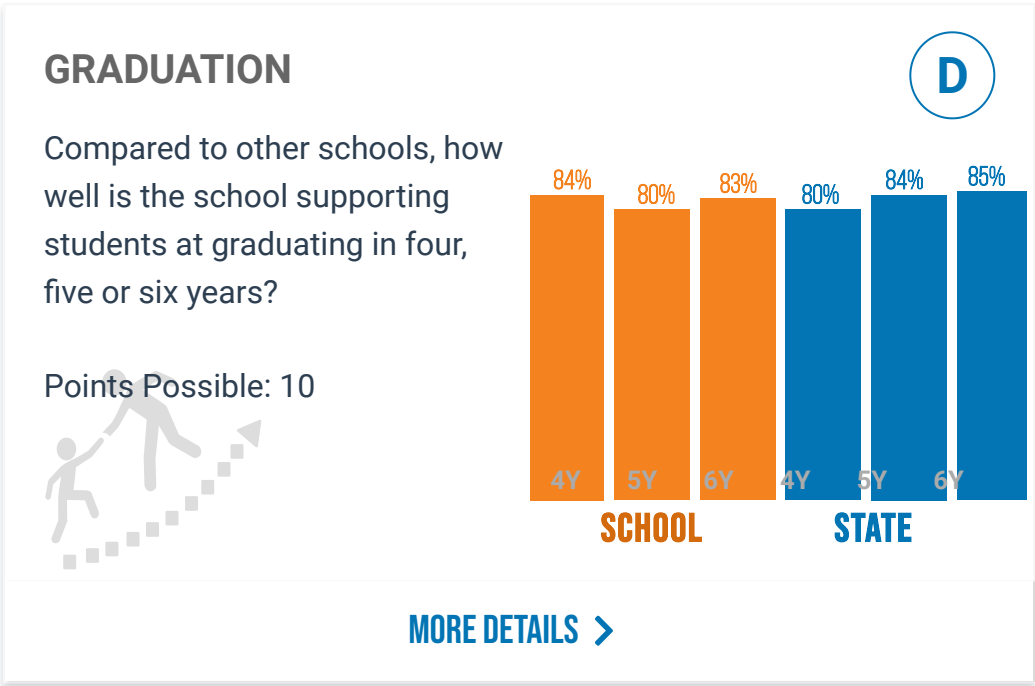
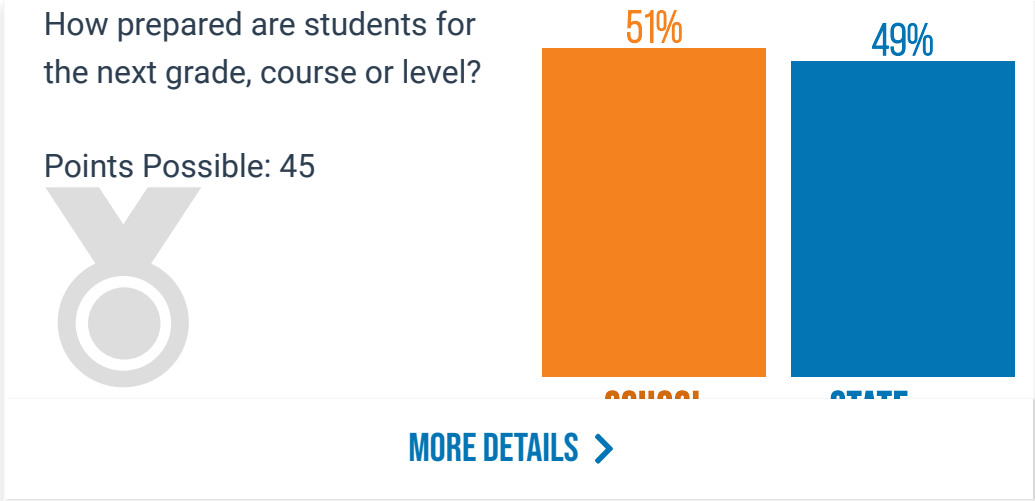
ABOUT THE OKLAHOMA SCHOOL REPORT CARDS

Report card measures displayed here serve as indicators of how public schools are serving students in a variety of areas. Measured at different points, indicators work together to provide a snapshot of school performance.

INDICATORS

ACADEMIC ACHIEVEMENT





ENGLISH LANGUAGE PROFICIENCY PROGRESS

SS

D

How well are English learners
meeting their language-
acquisition targets?

Points Possible: 10

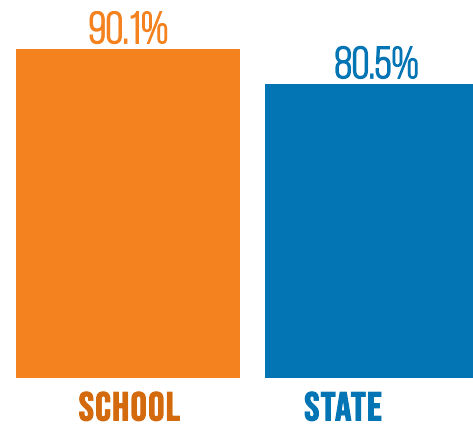
[MORE DETAILS >](#)

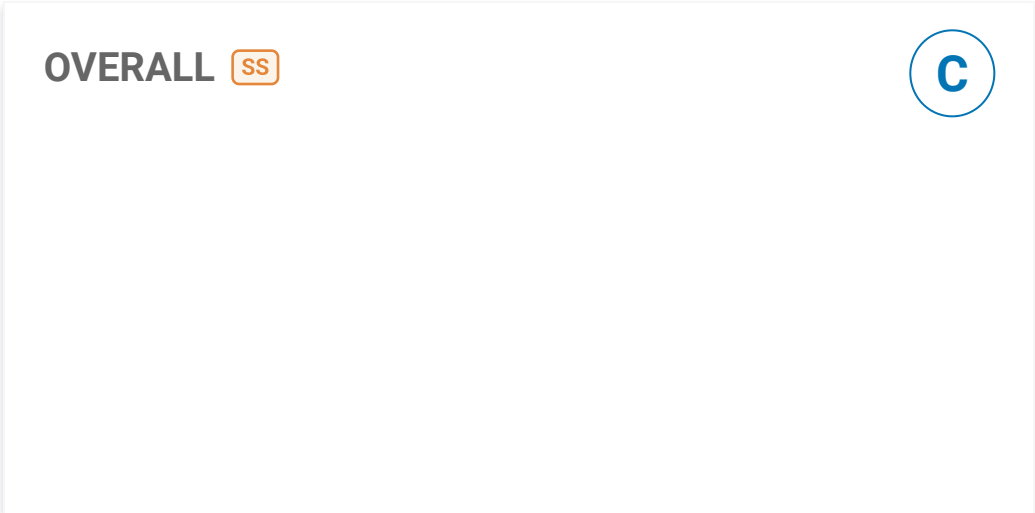
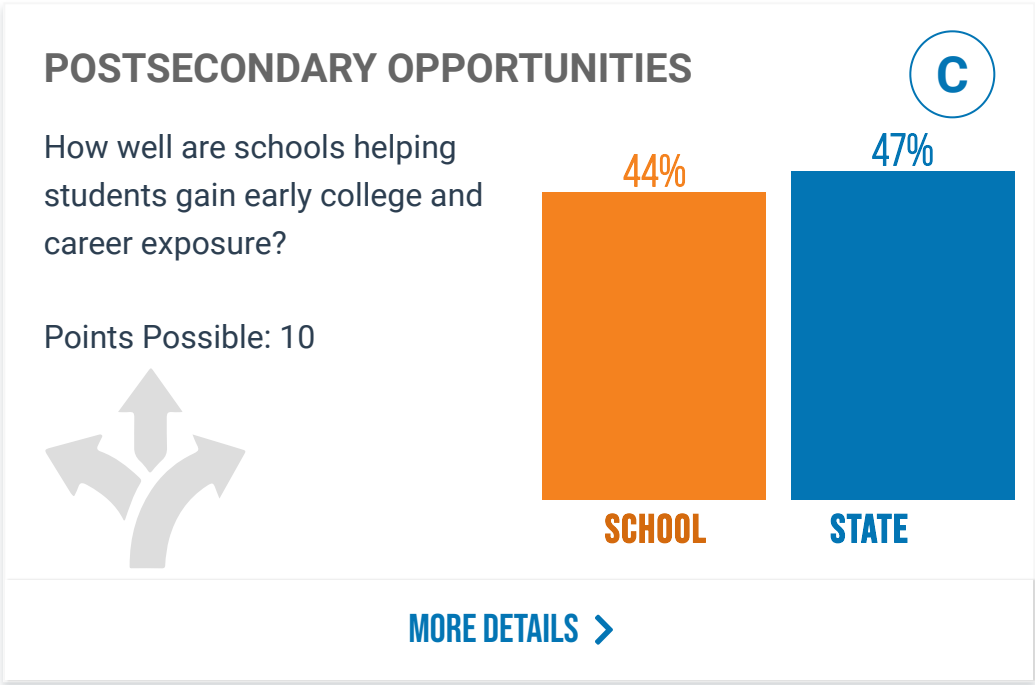
CHRONIC ABSENTEEISM

B

What percentage of students is
in good attendance?

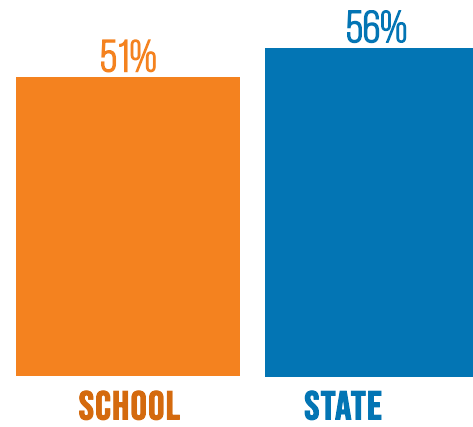
Points Possible: 10

[MORE DETAILS >](#)



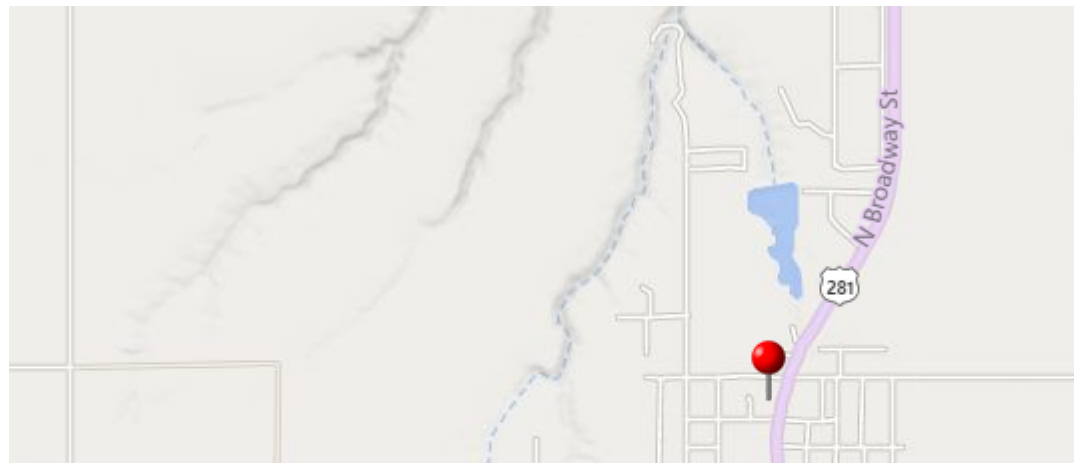
How did the school perform overall?

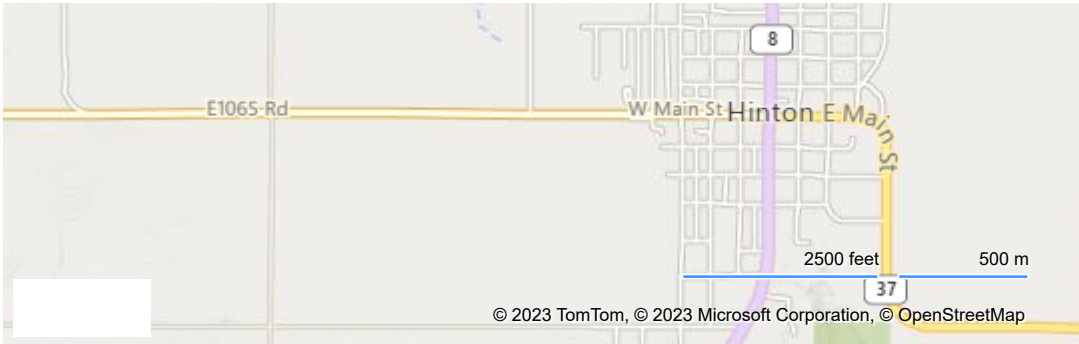
Points Possible: 85



HINTON HS

708 N. Broadway
Hinton, Oklahoma 73047
United States





SCHOOLS

DISTRICTS

STATE

OK.gov Policies

Version 3.12.0 **Release Notes**