

Medfield Public Schools

Student Growth Percentiles

1/8/24

Christine Power

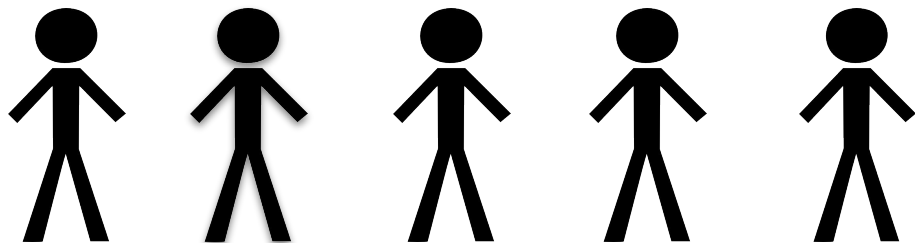
Director of Instruction and Innovation

What is Student Growth Percentile?

Student Growth Percentiles (SGPs) provide a measure of the degree to which a student's achievement has changed from the prior year(s) to the current year, in comparison to other students in the same grade who performed similarly in the past. (DESE, 2021)

Inclusivity-Respect-Responsibility-Continuous Growth

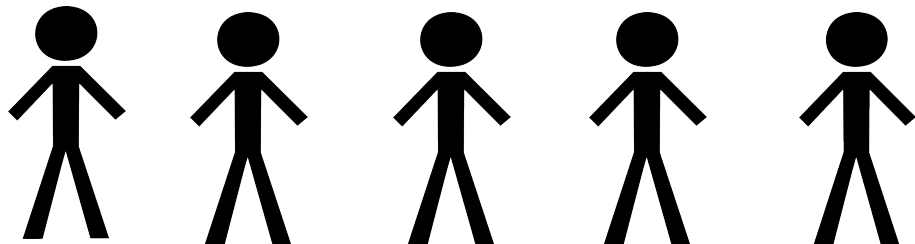
What is Student Growth Percentile?



472

540

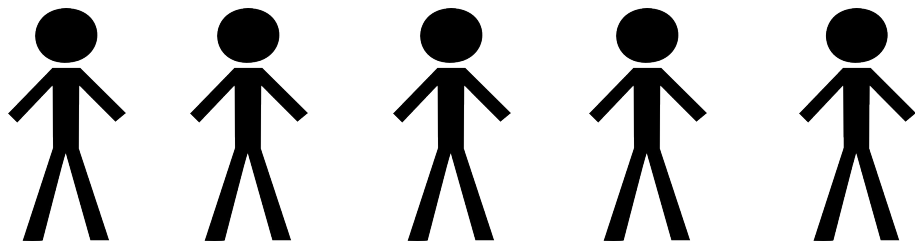
465



505

535

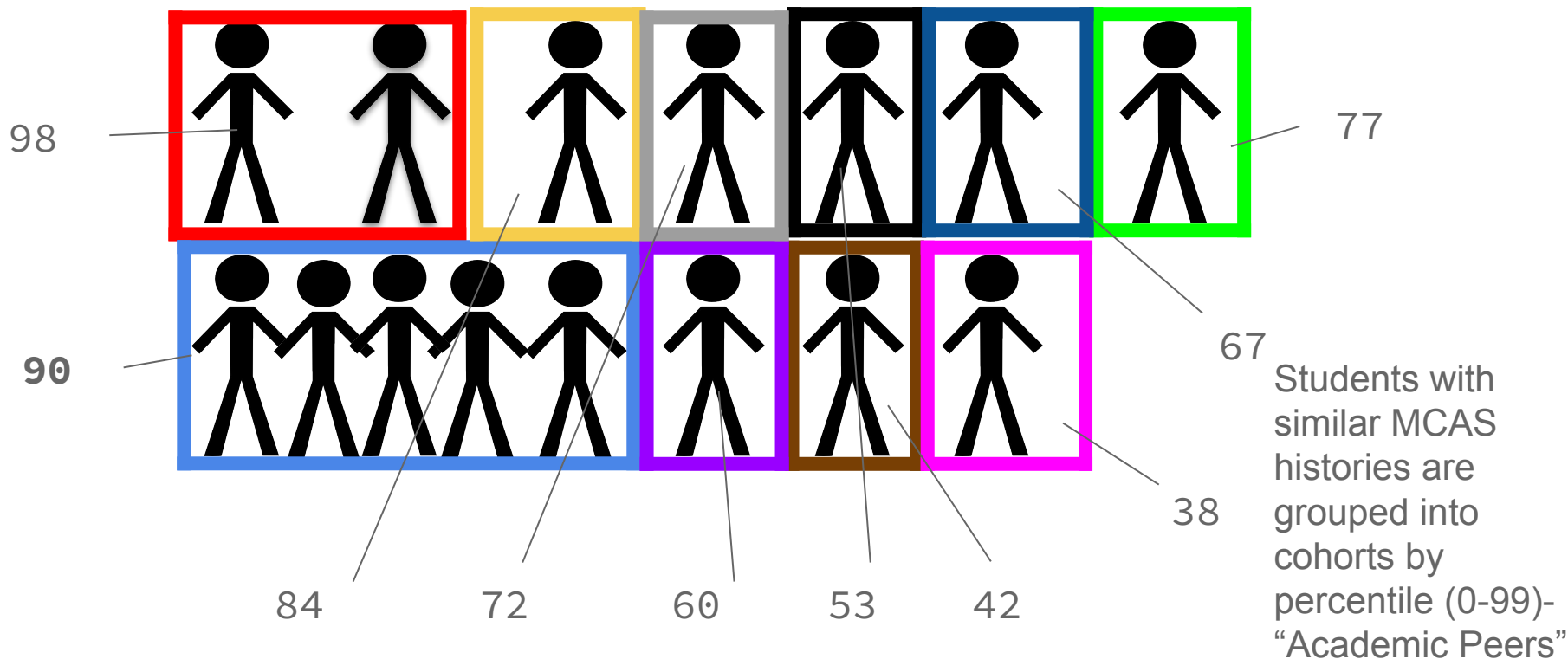
556



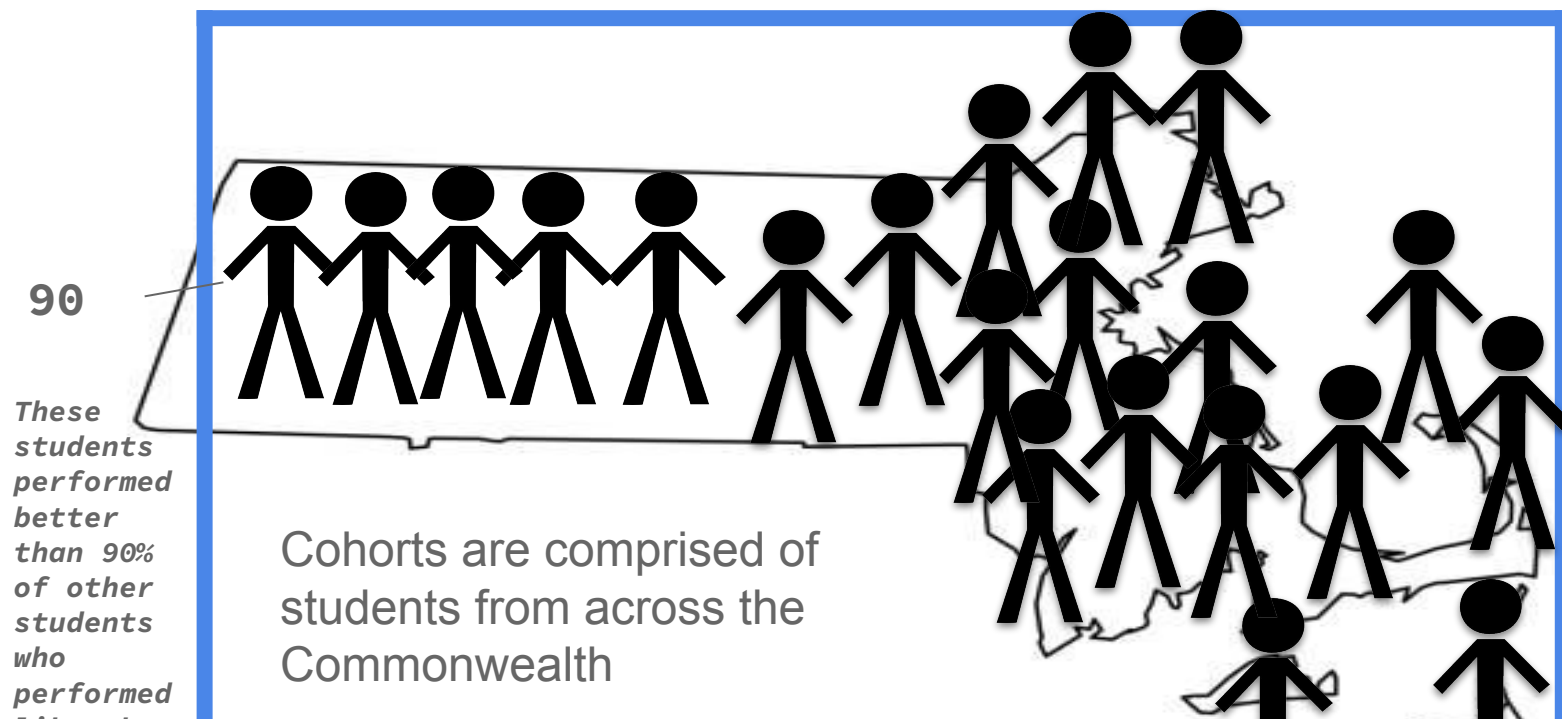
477

518

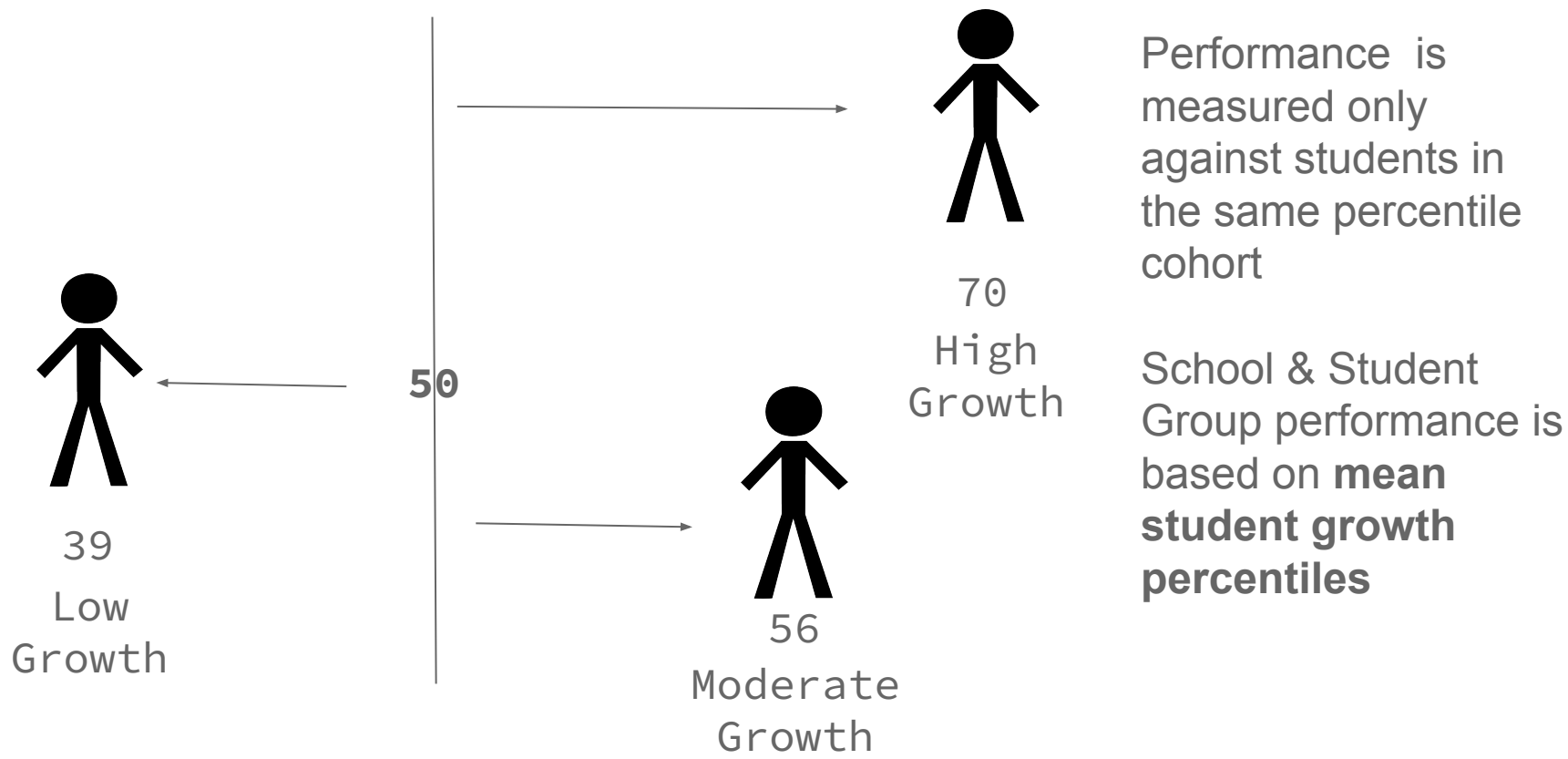
What is Student Growth Percentile?



What is Student Growth Percentile?



What is Student Growth Percentile?



What is Student Growth Percentile?

Above **60%**= **High Growth**

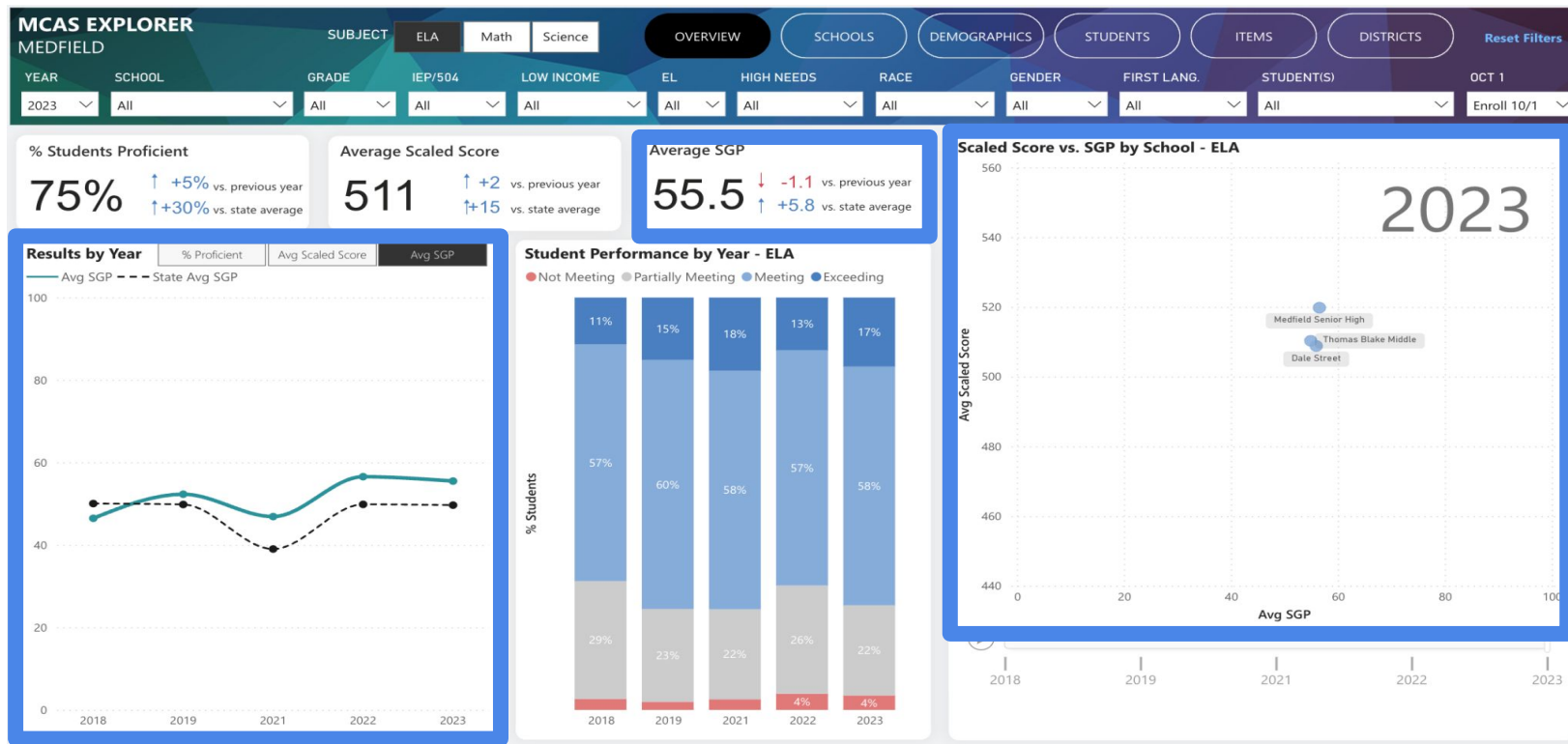
Between **40-60%**= **Moderate Growth**

Below **40%**= **Low Growth**

*Medfield Public Schools expects
50% student growth or higher*

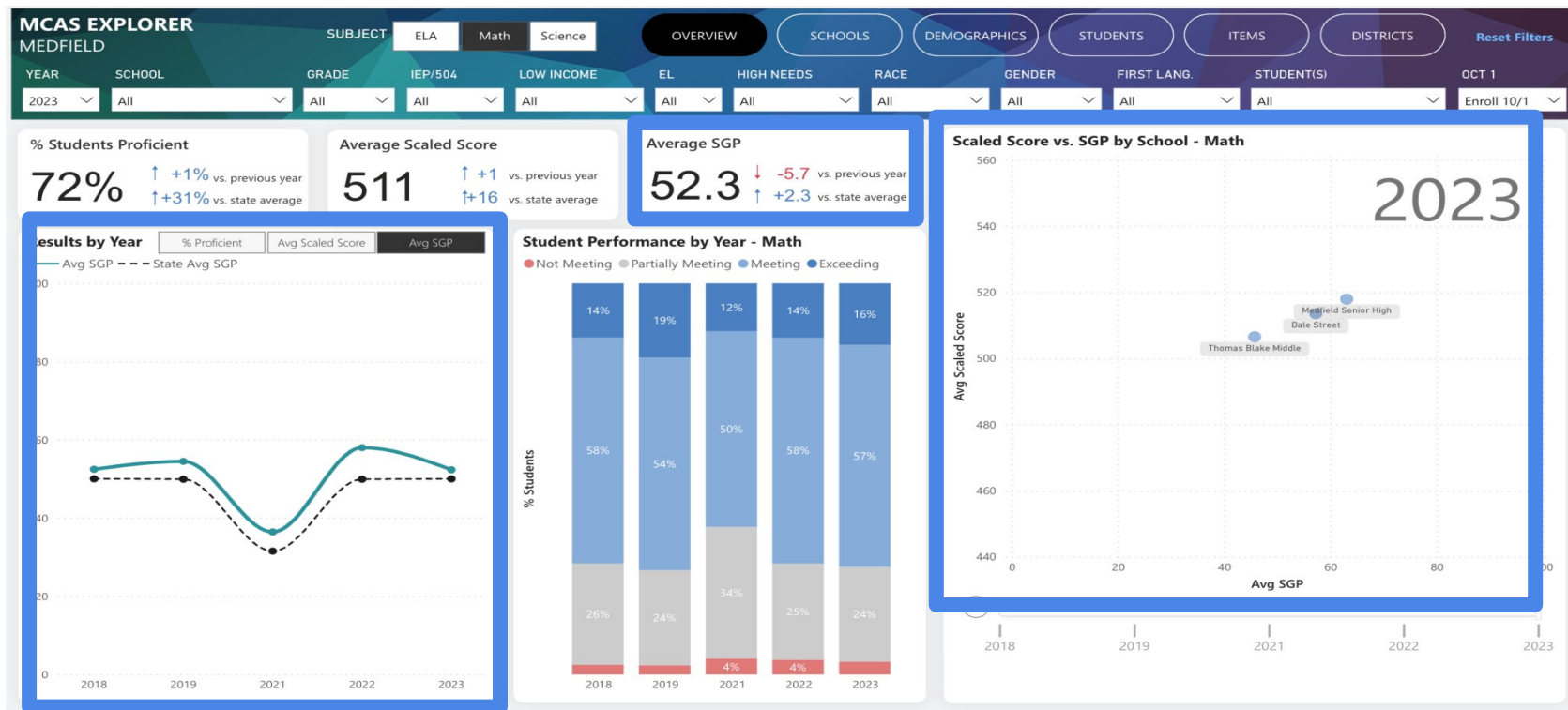
Inclusivity-Respect-Responsibility-Continuous Growth

District- ELA



Inclusivity-Respect-Responsibility-Continuous Growth

District- Math



Inclusivity-Respect-Responsibility-Continuous Growth

Medfield High School- ELA

% Students Proficient

85% ↑ +3% vs. previous year
↑ +41% vs. state average

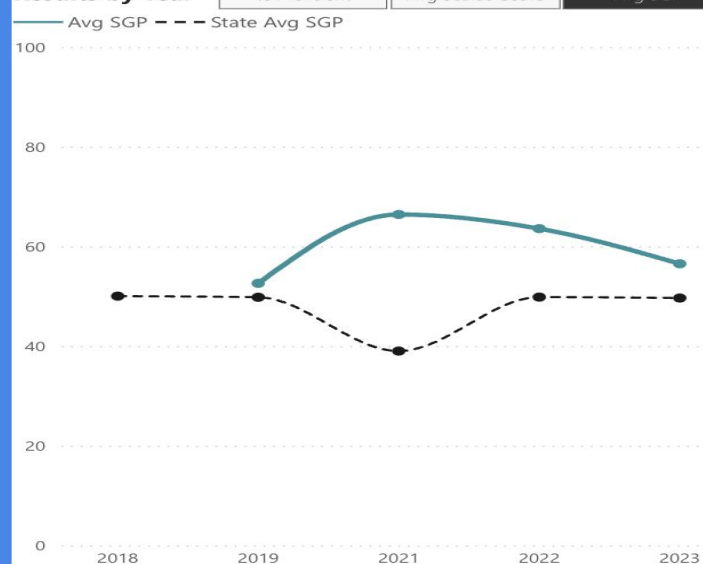
Average Scaled Score

520 ↑ +2 vs. previous year
↑ +24 vs. state average

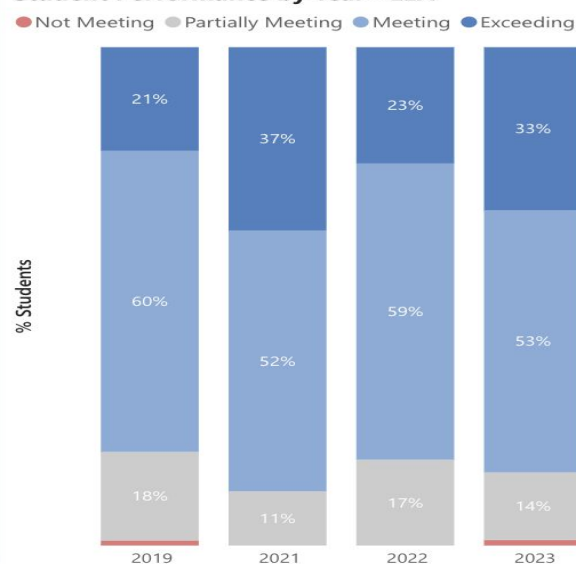
Average SGP

56.5 ↓ -7.1 vs. previous year
↑ +6.9 vs. state average

Results by Year

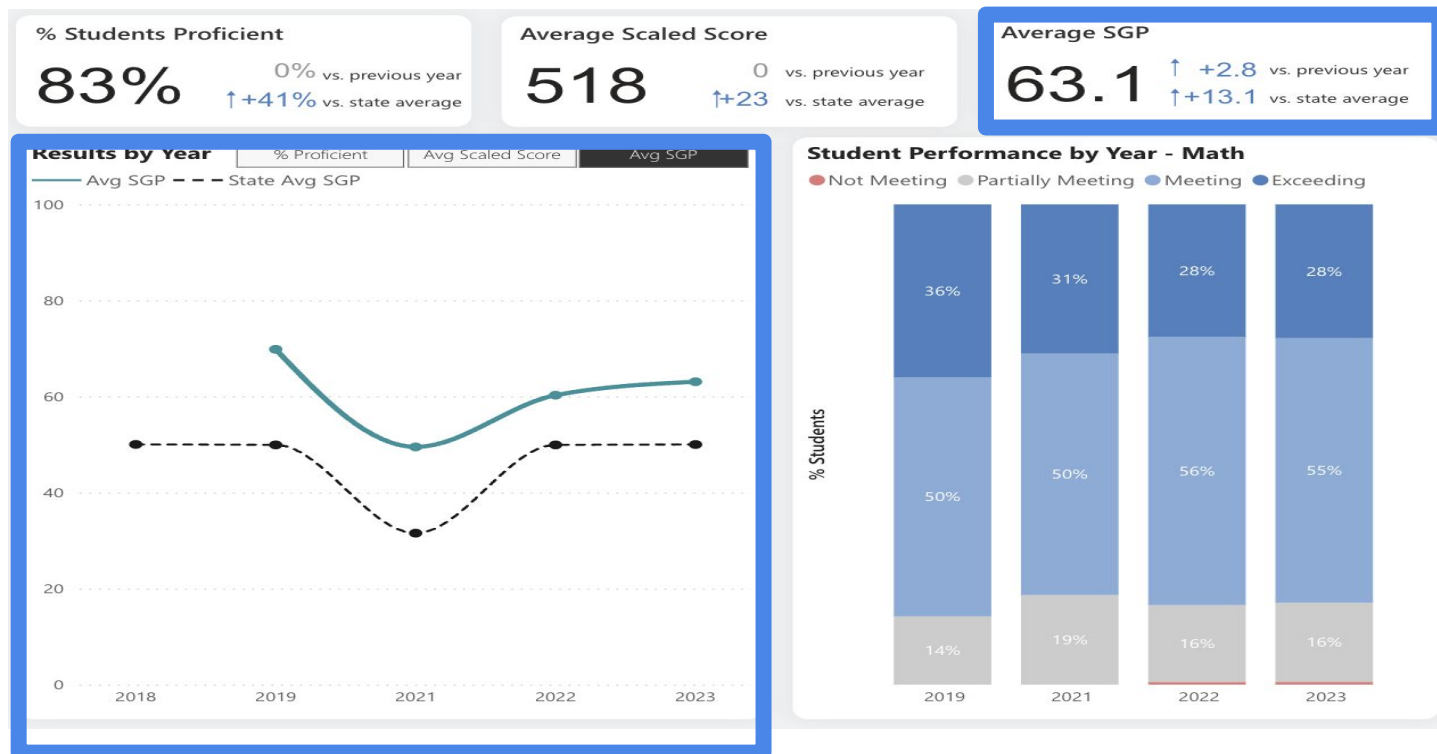


Student Performance by Year - ELA



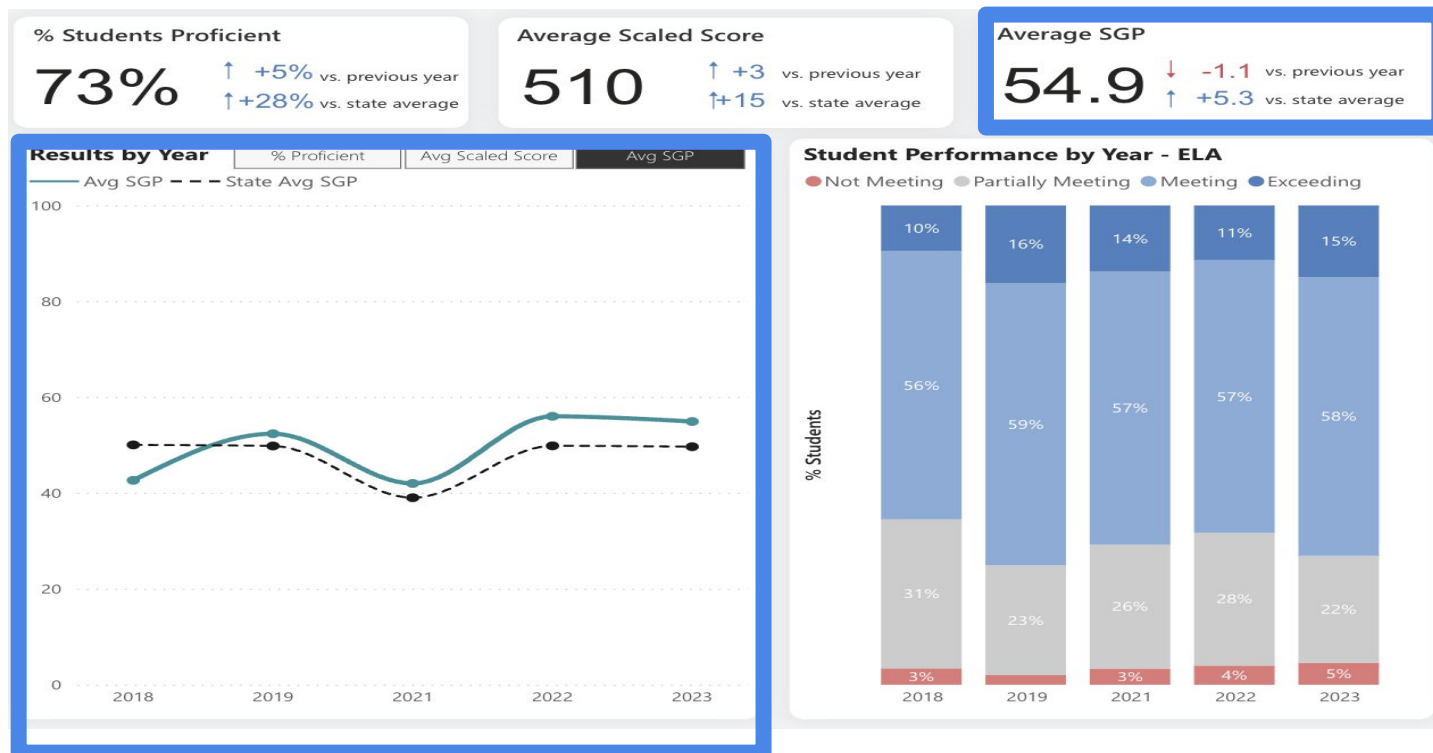
Inclusivity-Respect-Responsibility-Continuous Growth

Medfield High School- Math



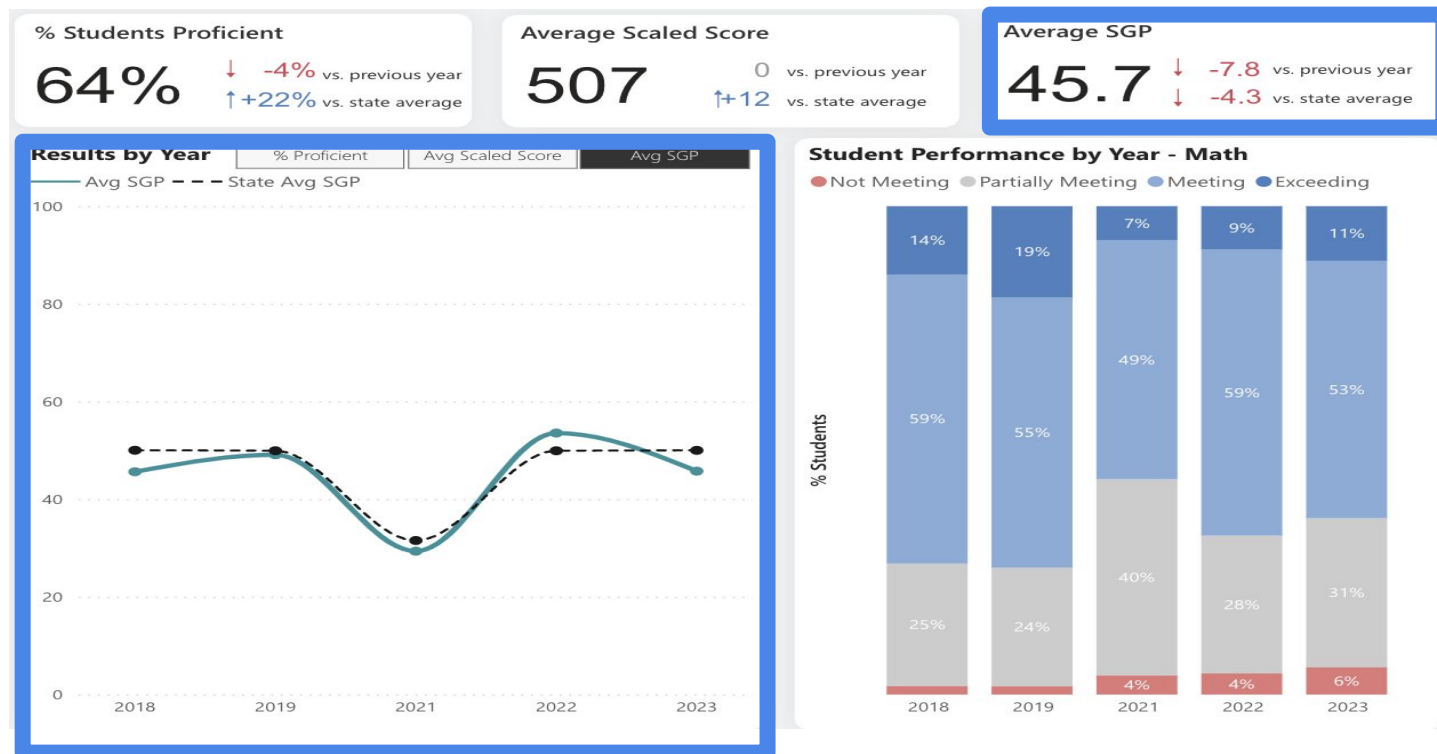
Inclusivity-Respect-Responsibility-Continuous Growth

Blake Middle School- ELA



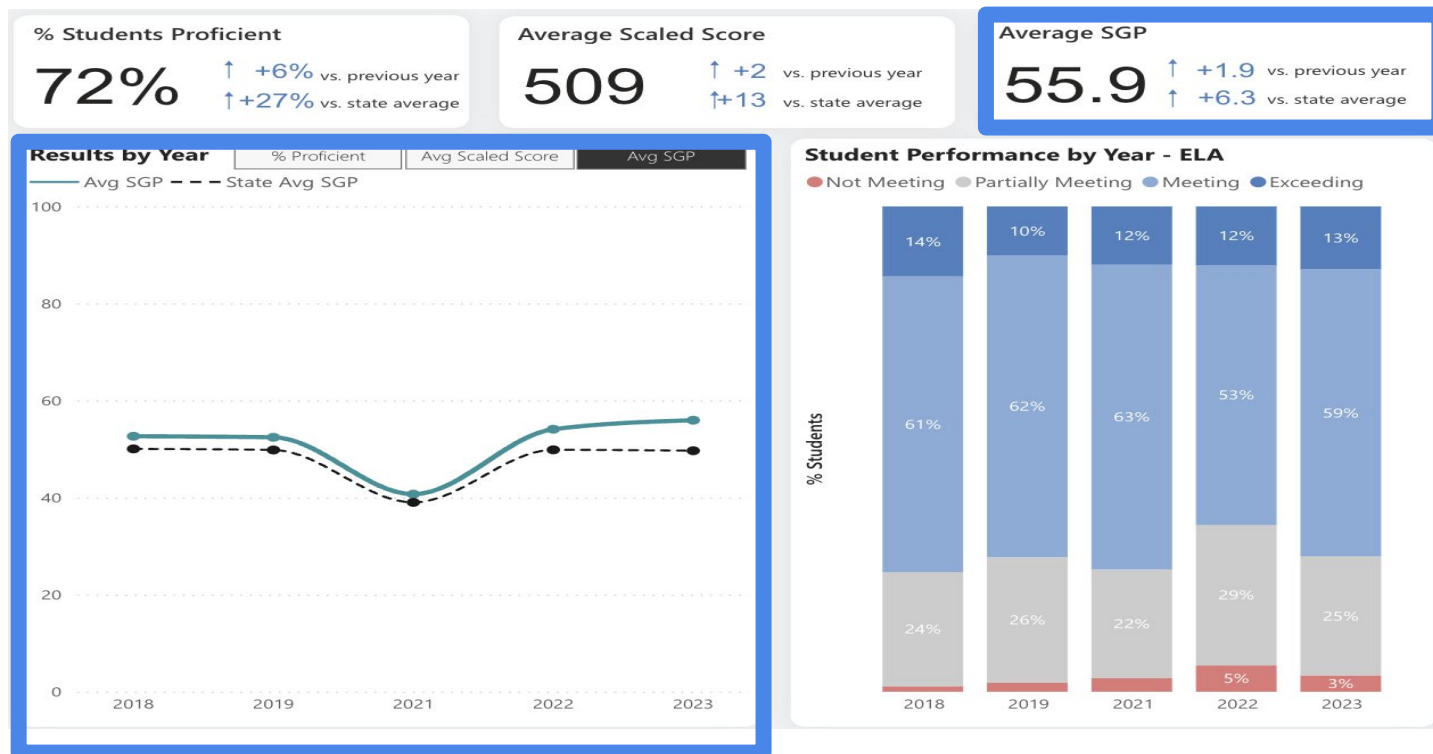
Inclusivity-Respect-Responsibility-Continuous Growth

Blake Middle School- Math



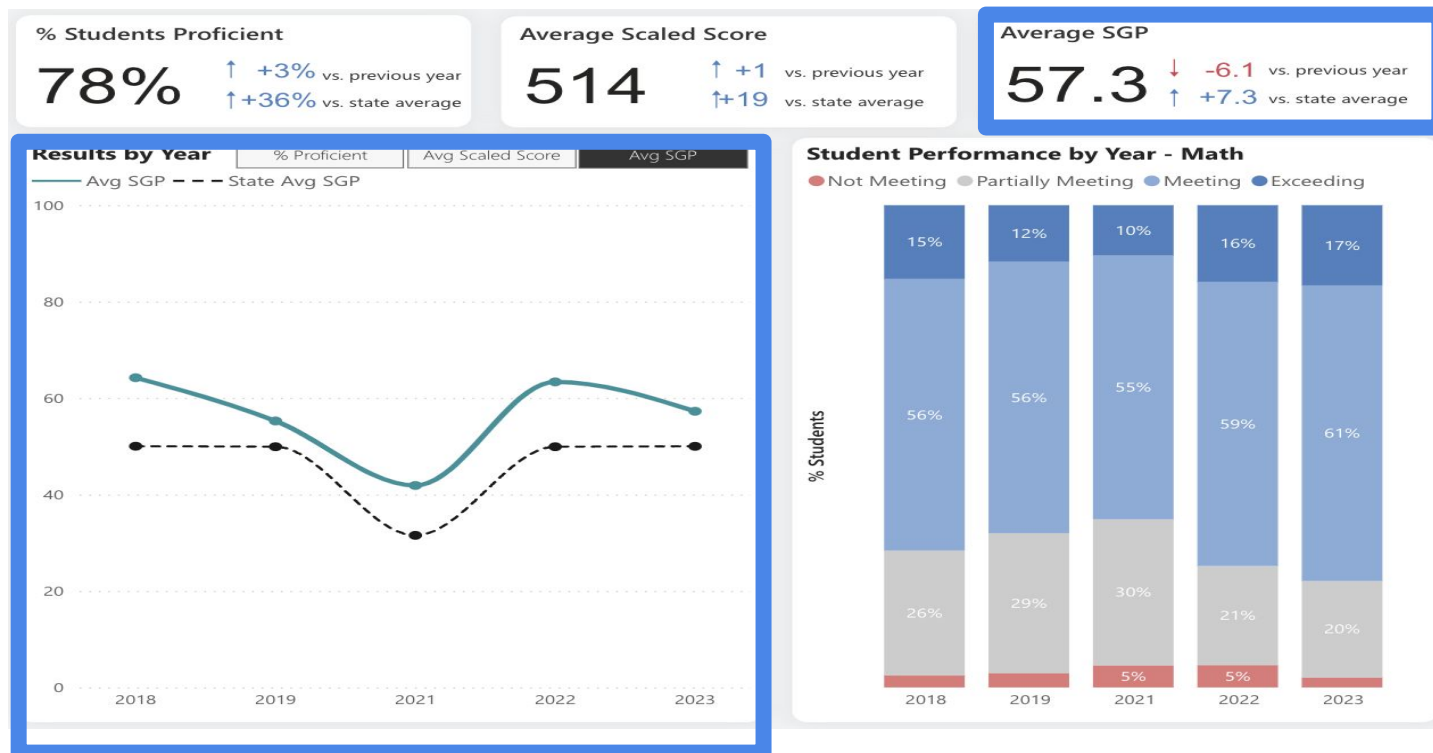
Inclusivity-Respect-Responsibility-Continuous Growth

Dale Street School- ELA



Inclusivity-Respect-Responsibility-Continuous Growth

Dale Street School- Math



Inclusivity-Respect-Responsibility-Continuous Growth

SGP By Grade- ELA

School/Grade	2019	2022	2023
Dale- Grade 4	55.8	55.1	58.6
Dale- Grade 5	49.1	53.1	53.2
Dale- Overall Average	52.4	54.1	55.9
Blake- Grade 6	53.6	54.4	55.4
Blake- Grade 7	59.5	66.0	69.2
Blake- Grade 8	45.0	47.9	38.2
Blake- Overall Average	52.4	56.0	54.9
MHS- Grade 10	52.6	63.6	56.5
MHS- Overall Average	52.6	63.6	56.5

SGP By Grade- Math

School/Grade	2019	2022	2023
Dale- Grade 4	58.3	64.2	62.2
Dale- Grade 5	52.2	62.6	52.2
Dale- Overall Average	55.3	63.4	57.3
Blake- Grade 6	46.0	46.3	31.5
Blake- Grade 7	67.4	59.9	60.8
Blake- Grade 8	35.5	55.9	44.7
Blake- Overall Average	49.1	53.5	45.7
MHS- Grade 10	69.8	60.3	63.1
MHS- Overall Average	69.8	60.3	63.1

Subgroups

Subgroup	N	Average SGP
IEP/504	340	49.2
Low Income	121	58.8
EL	13	64.2

Inclusivity-Respect-Responsibility-Continuous Growth

Subgroups- Race

Race	N	Average SGP
White	1137	54.8
Hispanic	63	58.0
Asian	59	63.7
Multi	50	59.5
Black	23	54.1
Native American	<10	—

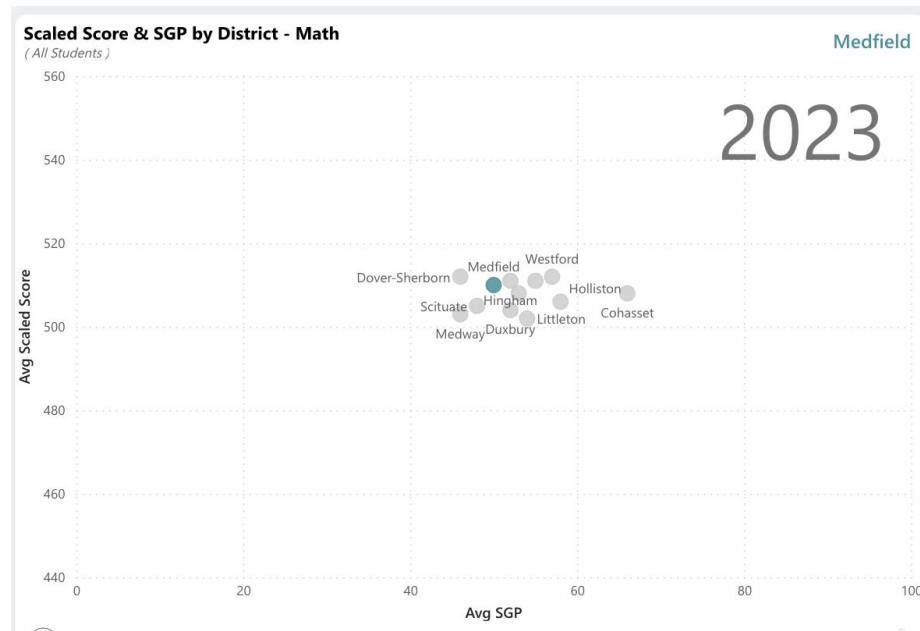
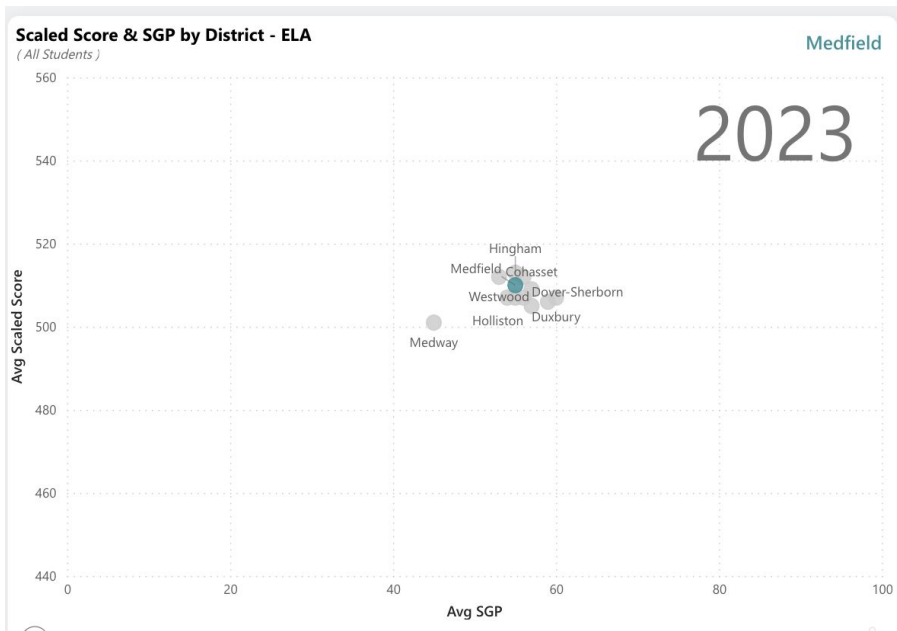
Inclusivity-Respect-Responsibility-Continuous Growth

Subgroups- First Language

First Language	N	Average SGP
English	1272	55.5
Other	30	58.6
Portuguese	11	43.9
Spanish	11	56.8
Arabic	<10	—
Chinese	<10	—

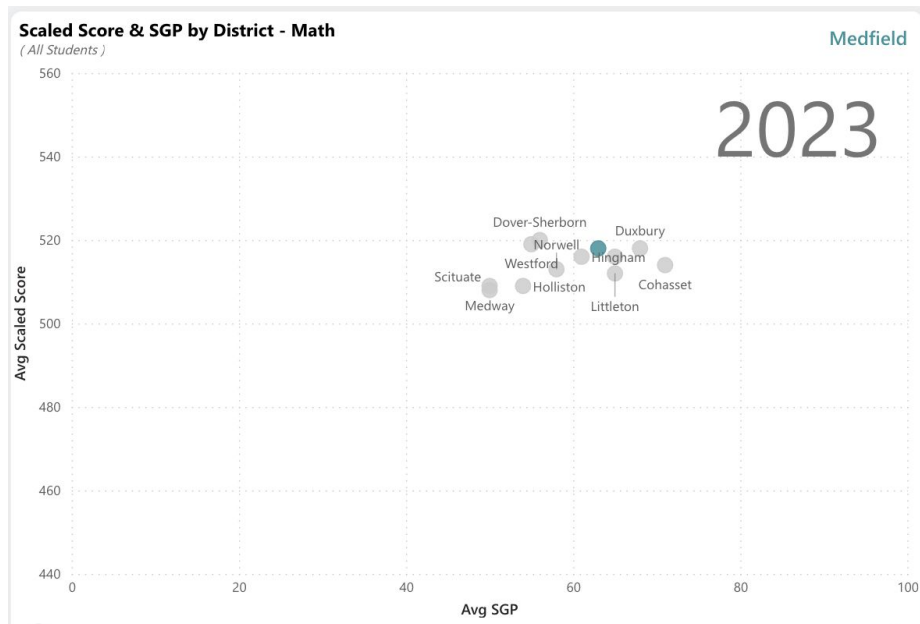
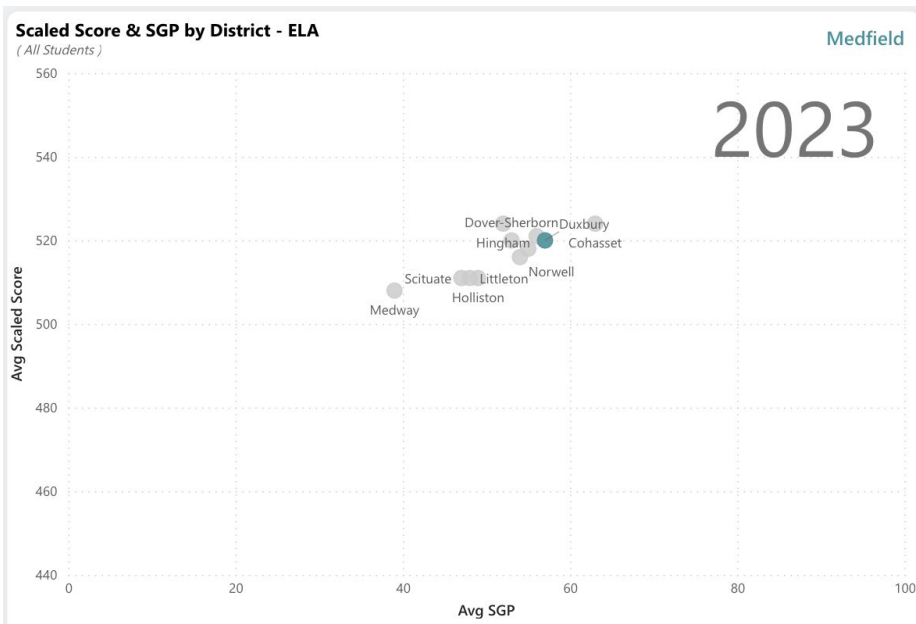
Inclusivity-Respect-Responsibility-Continuous Growth

District Comparisons (Grades 3-8)



Inclusivity-Respect-Responsibility-Continuous Growth

District Comparisons (Grade 10)



Inclusivity-Respect-Responsibility-Continuous Growth

Using SGP Data

- Although 40-60% SGP Range is considered to be “Moderate Growth”, Medfield Public Schools expects all groups to achieve **50% growth or higher**
- Ongoing data discussions with building leadership and department chairs to discuss trends and analyze areas of success and needed improvements by **School**, **Grade**, and **Subgroup**
 - Curriculum Alignment
 - Instructional Strategies
 - Targeted Focus (Grades, Subgroups)

Inclusivity-Respect-Responsibility-Continuous Growth

2023 Student Growth Percentiles

Reactions? Questions? Comments?

Inclusivity-Respect-Responsibility-Continuous Growth