



**Environmental  
Works, Inc.**

**Puxico R-VIII School District  
Lead in Drinking Water  
Sampling and Testing Plan**

**Prepared For:**

Puxico R-VIII School District  
481 North Bedford Street  
Puxico, Stoddard County, Missouri 63960-9144

**Prepared By:**

Environmental Works, Inc.  
2008 North Westwood Blvd.  
Poplar Bluff, Missouri 63901

**Plan Prepared:**

December 27, 2023

# Table of Contents

- 1.0 Purpose.....1**
  - 1.1 Regulatory Schedule Requirements (RSMo 160.077(4)) ..... 1
- 2.0 School District Description and Contact Information.....2**
  - 2.1 School District Information ..... 2
  - 2.2 Buildings ..... 2
- 3.0 Inventory .....3**
  - 3.1 Outlet Identification and Prioritization ..... 3
- 4.0 Sampling and Testing.....4**
  - 4.1 Initial Sampling and Testing..... 4
  - 4.2 Subsequent Sampling and Testing ..... 4
- APPENDIX A – Building Diagrams..... A**
- APPENDIX B – Building Summary..... B**
- APPENDIX C – Outlet Inventory ..... C**

## 1.0 Purpose

Environmental Works, Inc. (EWI), on behalf of the Puxico R-VIII School District (Puxico R-VIII), has prepared this Lead in Drinking Water Sampling and Testing (LDWST) Plan in response to the Missouri Revised Statutes of Missouri (RSMo) Chapter 160 Section 077 (160.077). This LDWST Plan includes procedures for inventorying and sampling outlets used for drinking water and water dispensed for cooking and cleaning of eating and cooking utensils in each of the school buildings.

This Plan has been prepared to meet the requirements of the RSMo 160.077, the Environmental Protection Agency's (EPA) 3Ts for Reducing Lead in Drinking Water, and the EPA Safe Drinking Water Act (SDWA). The Puxico R-VIII School District has distributed this LDWST Plan to the public through the District website (<https://www.puxico.k12.mo.us/>). General information on the health effects of lead contamination and additional informational resources for employees and parents of children at each school will be provided upon request.

### 1.1 Regulatory Schedule Requirements (RSMo 160.077(4))

In accordance with RSMo 160.077, on or before January 1, 2024, each school will:

- Conduct an inventory of all drinking water outlets and all outlets that are used for dispensing water for consumption, cooking, and cleaning of cooking and eating utensils;
- Develop a Plan for testing each outlet inventoried;
- Provide the Plan to the public; and
- Upon request, provide general information on the health effects of lead contamination and additional informational resources for employees and parents of children at each school.

Before August 1, 2024, or on the first day students will be present in the building, whichever is later, each school will:

- Complete sampling in accordance with RSMo 160.077,
- Make all testing results and any lead remediation plans available on the school's website within two weeks of receiving final analytical test results, and
- Remove and replace any drinking water coolers or drinking water outlets that the EPA has determined are not lead-free under the federal Lead Contamination Control Act of 1988.

## 2.0 School District Description and Contact Information

### 2.1 School District Information

**School District:** Puxico R-VIII Schools

**School Type:** Public

**Address:** 481 N. Bedford St.  
Puxico, Stoddard County, Missouri 63960

**Phone:** (573) 222-3762 (O) and (573) 222-3137 (F)

**Email:** ccrabb@puxico.k12.mo.us

**Contact:** Cindy Crabb  
Superintendent  
573-222-3762 (O)

### 2.2 Buildings

The following table summarizes the schools covered in this LDWST Plan.

| Schools                  | Grade       | Address                                  |
|--------------------------|-------------|--|
| Puxico R-VIII Elementary | Pre-K – 5th | 381 E. Reed<br>Puxico, Missouri 63960    |
| Puxico R-VIII Jr. High   | 6th – 8th   | 466 N. Hickman<br>Puxico, Missouri 63960 |
| Puxico R-VIII High       | 9th – 12th  | 441 N. Hickman<br>Puxico, Missouri 63960 |

### 3.0 Inventory

The Puxico R-VIII School District completed a building and outlet questionnaire, and EWI completed a site visit to gather information such as:

- Date of building construction,
- Year and location of plumbing repairs,
- Location where water enters the building and flow,
- Identification of any known lead lines or plumbing components,
- Location of water pipes and piping material,
- Location of any tanks in the plumbing system,
- Identification of all faucets and fixtures used for drinking water and cooking, and
- Identification of filters, aerators, signs of corrosion, or banned water cooler tanks.

#### 3.1 Outlet Identification and Prioritization

Drinking water and cooking outlets were identified from the questionnaire and site visit in accordance with the Missouri RSMo's 160.077.2 drinking water outlet definition, which includes but may not be limited to:

- a) A water fountain, faucet, or tap that is used or potentially used for drinking or food preparation and
- b) Ice-making and hot drink machines.

Building diagrams are attached in **Appendix A**, detailed information on each building can be found in **Appendix B**, and the outlets identified in the inventory are outlined in **Appendix C**.

## 4.0 Sampling and Testing

### 4.1 Initial Sampling and Testing

The outlet inventory and prioritization schedule included in this plan will be used to conduct sampling for the Puxico R-VIII School District. Samples will be collected using proper sampling procedures. The sampler will utilize laboratory prepared 250-milliliter (mL) unpreserved plastic containers to collect outlet water for analysis of lead by Method 200.8. Samples will be labeled, managed under a Chain of Custody, and sent to a certified laboratory for analysis. EWI personnel will collect samples from each identified outlet based on the following criteria:

#### **First Draw Sampling**

First draw samples will be immediately collected from the outlet from the first water after the outlet is turned on. Samples will be collected after a stagnation period of at least 8 hours but no greater than 18 hours.

#### **Flush Sampling**

Follow-up flush samples will be collected from at least 25% of inventoried drinking water outlets.

All results will be summarized in a final report, submitted to the Missouri Department of Health and Senior Services, and published on the Puxico R-VIII School District website.

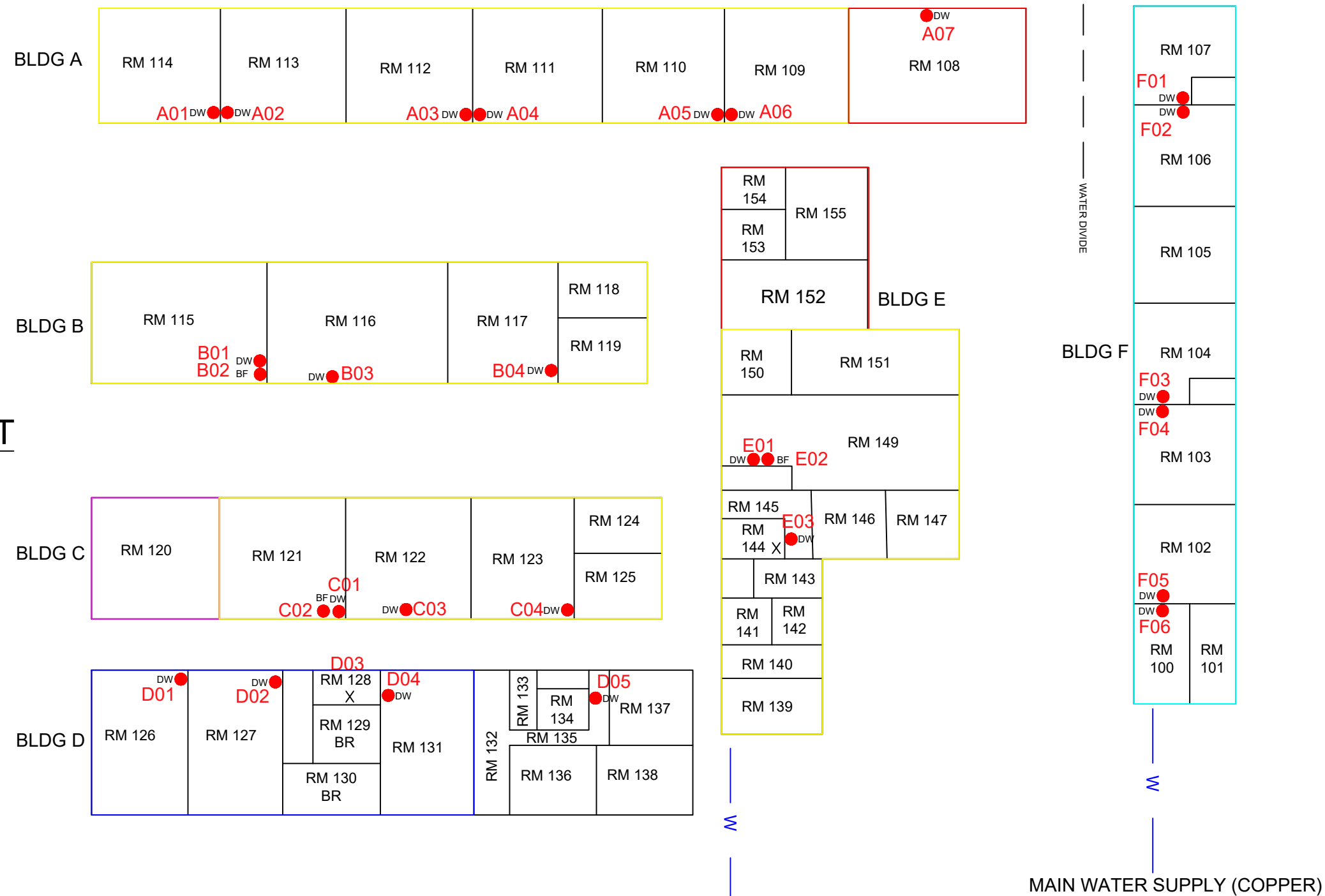
### 4.2 Subsequent Sampling and Testing

If initial testing finds lead above 5 parts per billion (ppb), the Puxico R-VIII School District will implement remedial measures, then test and sample 25% of remediated drinking water outlets by first draw and follow-up flush sampling annually.

If initial testing does not find a drinking water source with a lead concentration above 5 ppb, Puxico R-VIII School District will complete testing and sampling every five years.

## APPENDIX A – Building Diagrams

# PUXICO R-VIII SCHOOL DISTRICT BUILDINGS A-F ELEMETARY



### LEGEND

APPROXIMATE OUTLET LOCATIONS:

- FOUNTAIN
- NON-OPERATIONAL OUTLET
- X WATER HEATER

- PHASE 1 - 1955
- PHASE 2 - 1971
- PHASE 3 - 1973
- PHASE 4 - 2002-2003
- ART ROOM - 1979



CHECKED BY:  
T. ABERNATHY  
E.W.I. # 234214  
DRAWN BY: REH  
Dec. 23, 2023

NOT TO SCALE



Kansas City Office Location:  
1731 Locust Street  
Kansas City, MO 64108  
Phone: (417) 890-9500

BUILDING DIAGRAM

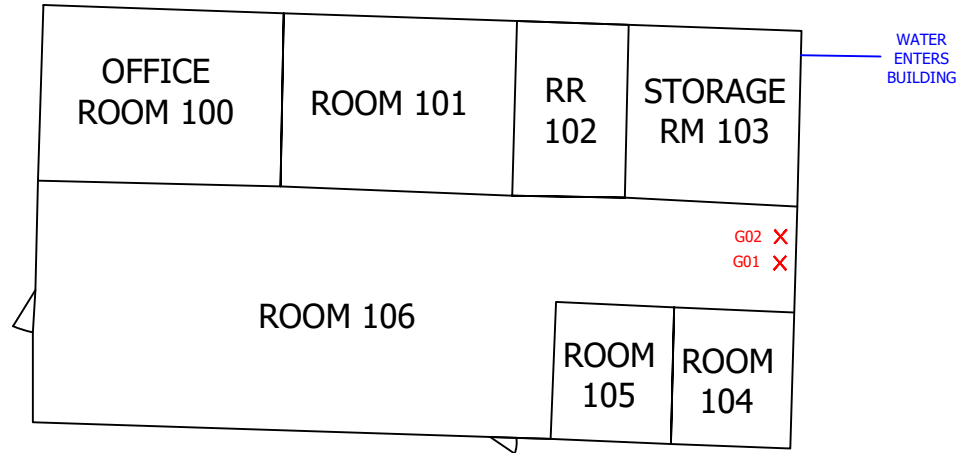
BUILDING A-F ELEMENTARY BUILDING  
393 E REED AVENUE  
PUXICO, STODDARD COUNTY, MISSOURI

FIGURE  
**1**

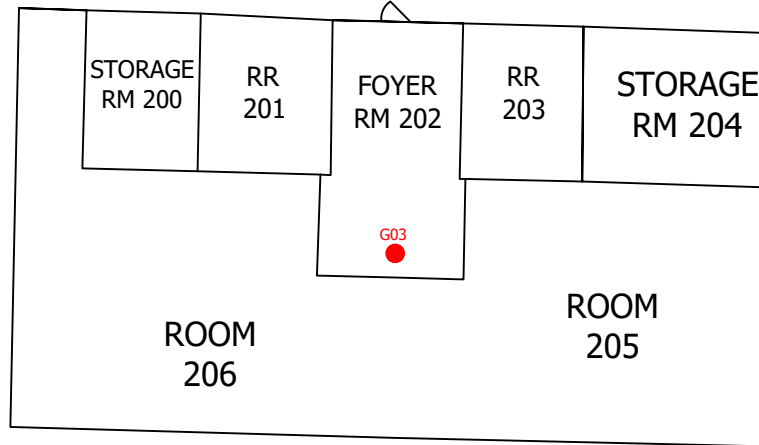


# BUILDING G- SPECIAL EDUCATION BUILDING

LOWER LEVEL



UPPER LEVEL



LEGEND

APPROXIMATE OUTLET LOCATIONS:

- ✕ FAUCET
- FOUNTAIN
- NON-OPERATIONAL OUTLET

NORTH



CHECKED BY:  
J. PFANNENSTIEL

E.W.I. # 171003.01  
DRAWN BY: TW  
JULY 6, 2022

NOT TO SCALE



Kansas City Office Location:  
1731 Locust Street  
Kansas City, MO 64108  
Phone: (816) 285-8410

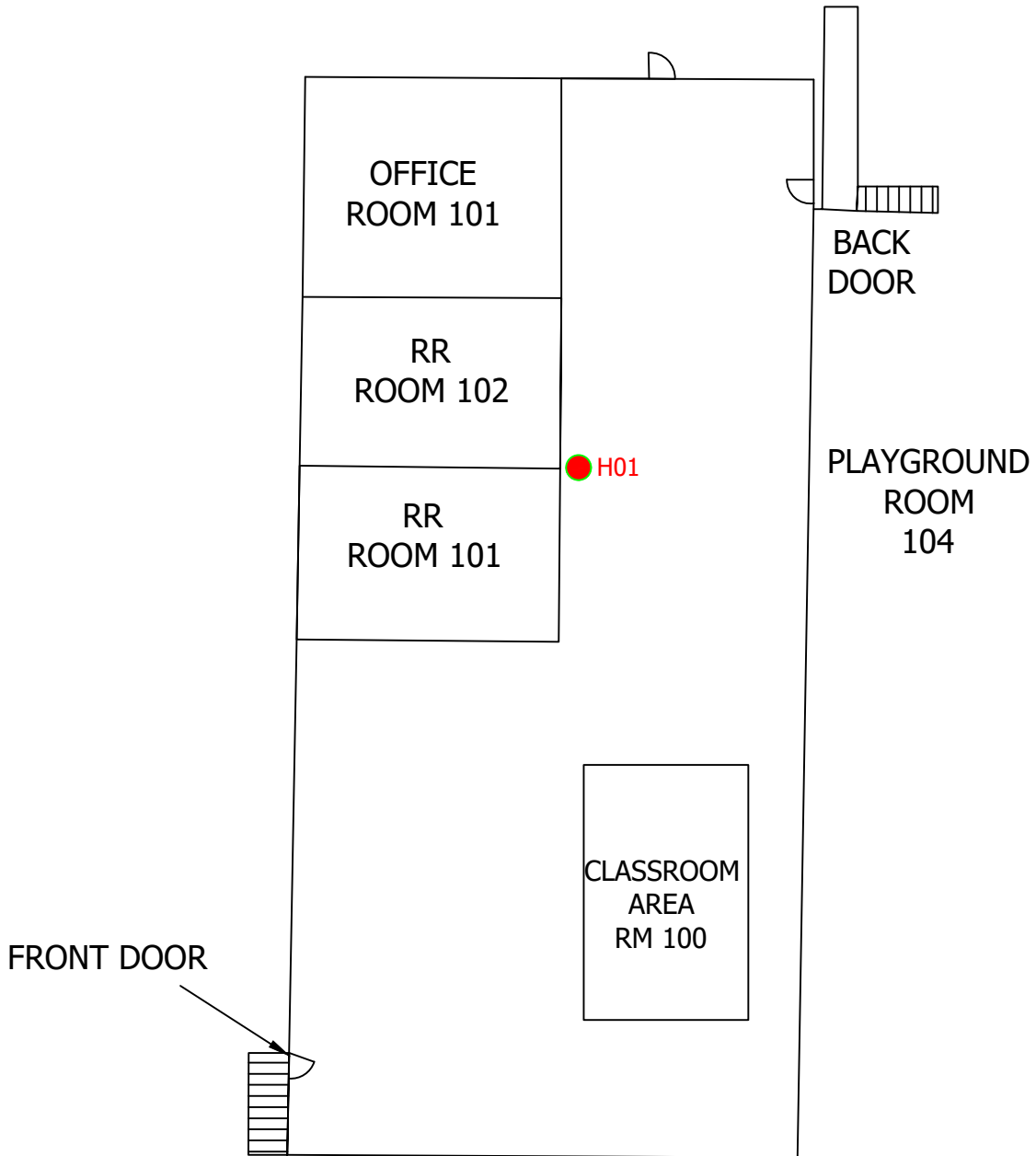
BUILDING DIAGRAM

BUILDING G- SPECIAL EDUCATION BUILDING  
393 E REED AVENUE  
PUXICO, STODDARD COUNTY, MISSOURI

FIGURE

2

# Building H - Little Indians Preschool



NORTH



LEGEND

APPROXIMATE OUTLET LOCATIONS:

- FOUNTAIN
- NON-OPERATIONAL OUTLET

CHECKED BY:  
T. Abernathy

E.W.I. # 23414  
DRAWN BY: TW  
December 8, 2023

NOT TO SCALE



ENVIRONMENTAL WORKS  
1455 E. Chestnut Expressway, Springfield, MO 65802

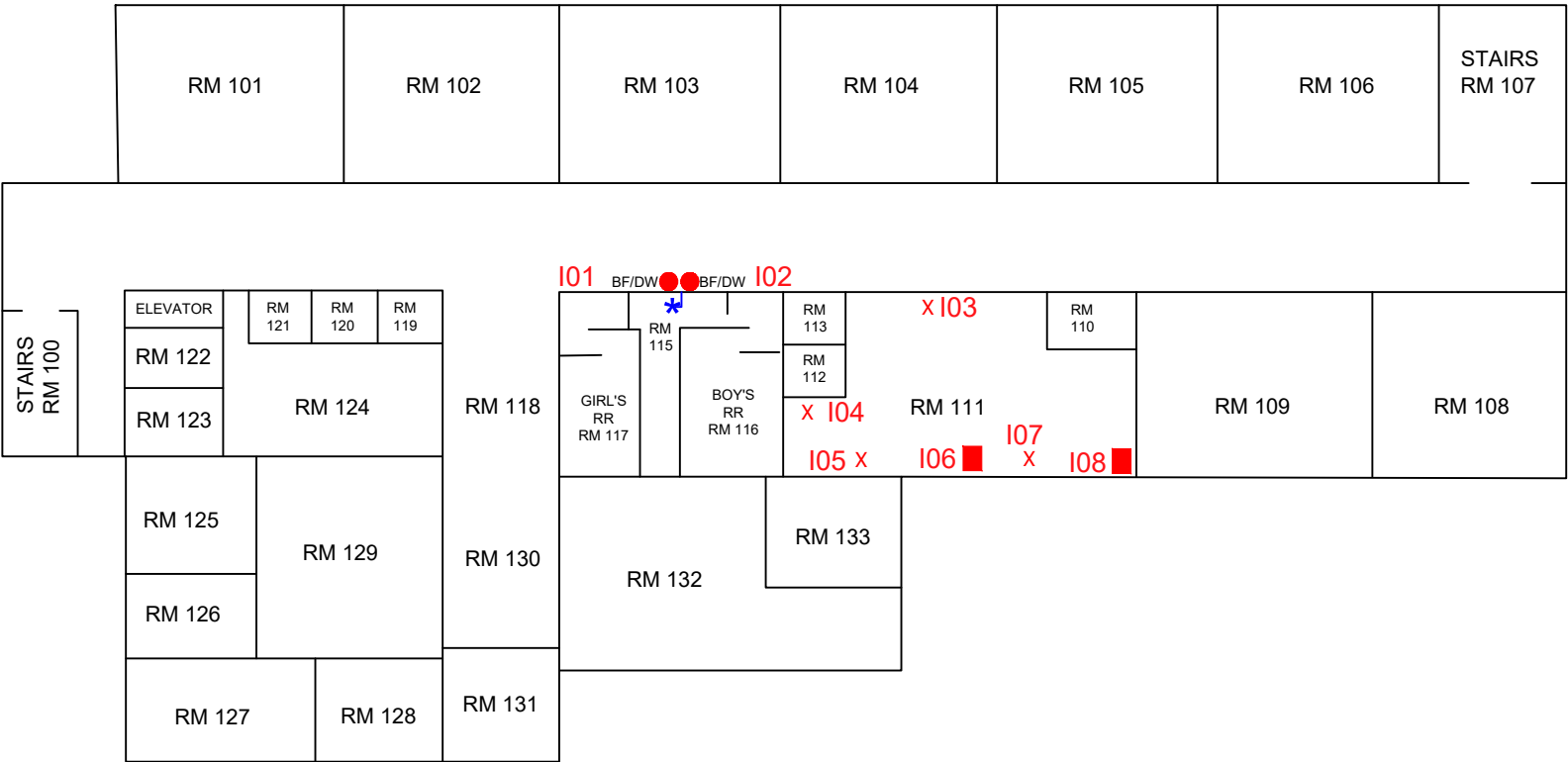
BUILDING DIAGRAM

Building H-Little Indians Preschool  
400 North Hickman Street  
Puxico, Stoddard County, Missouri

FIGURE

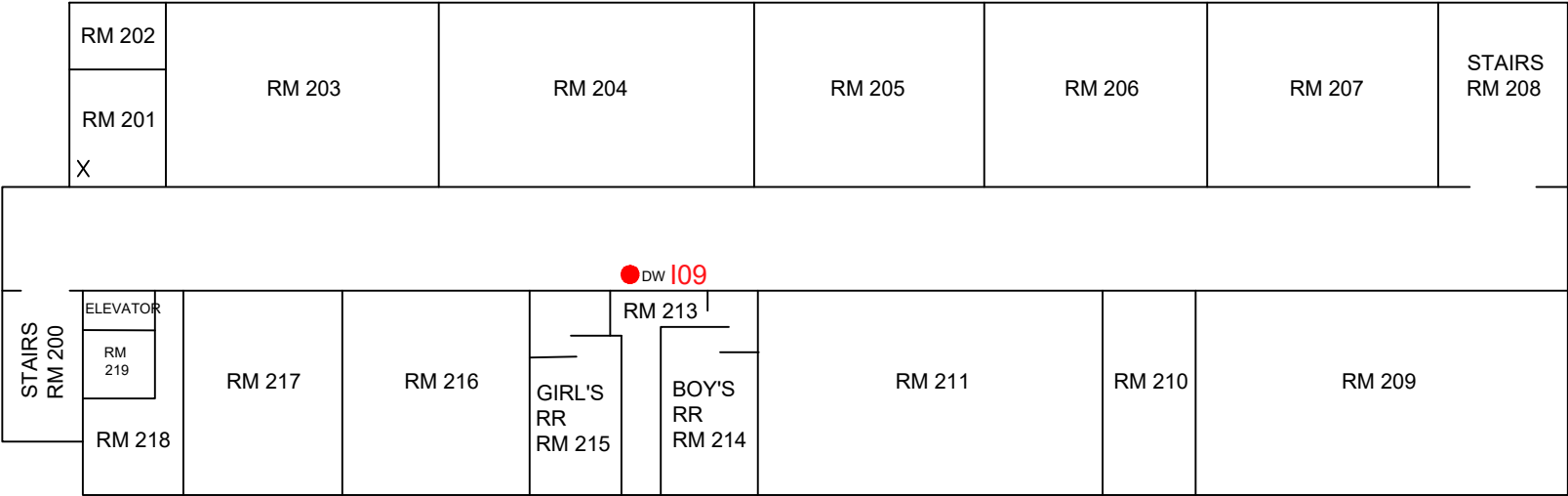
3

# HIGH SCHOOL - LOWER LEVEL





## PUXICO R-VIII SCHOOL DISTRICT BUILDING I HIGH SCHOOL

# HIGH SCHOOL - UPPER LEVEL

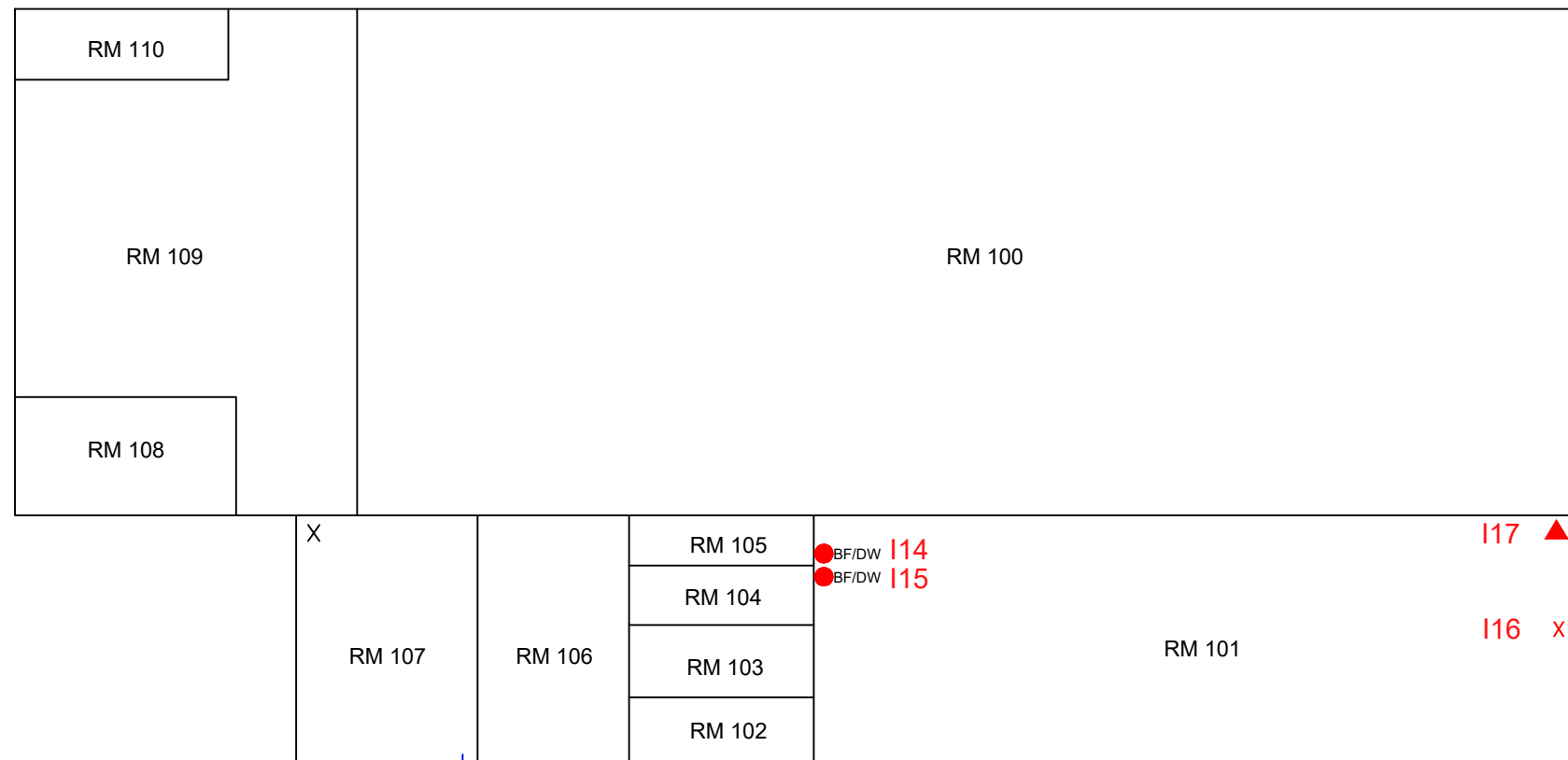


| LEGEND                              |                   |
|-------------------------------------|-------------------|
| <span style="color: red;">●</span>  | DRINK FOUNTAIN    |
| <span style="color: red;">■</span>  | DISHWASHER        |
| <span style="color: red;">X</span>  | FAUCET            |
| <span style="color: blue;">★</span> | MAIN WATER SUPPLY |

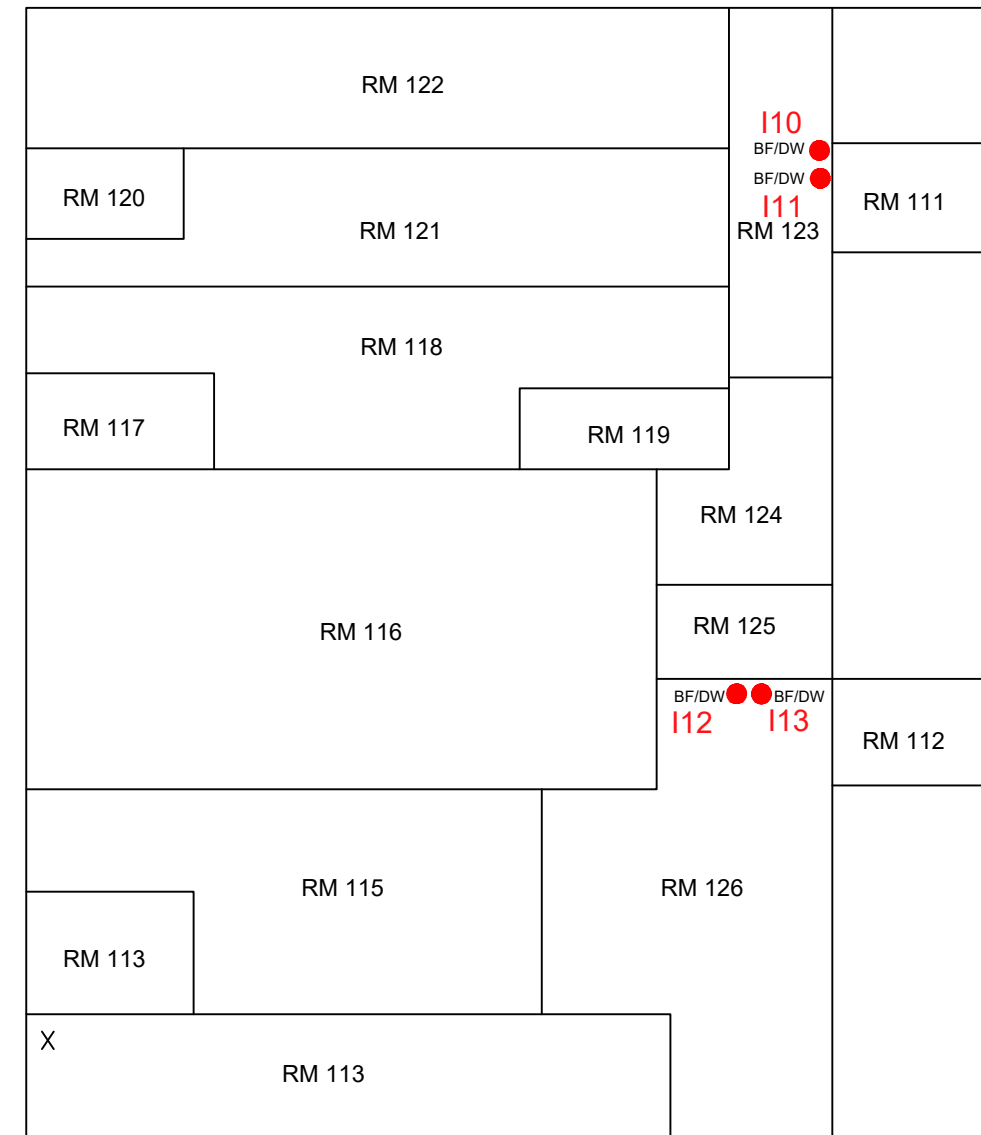
|   |   |              |   |  |  |                    |
|---|---|--------------|---|--|--|--------------------|
|  | CHECKED BY:<br>T. ABERNATHY                       | NOT TO SCALE |  | Kansas City Office Location:<br>1731 Locust Street<br>Kansas City, MO 64108<br>Phone: (417) 890-9500 | BUILDING DIAGRAM   | FIGURE<br><b>4</b> |
|   | E.W.I. # 234214<br>DRAWN BY: REH<br>Dec. 24, 2023 |              |   |  | BUILDING I HIGH SCHOOL<br>393 E REED AVENUE<br>PUXICO, STODDARD COUNTY, MISSOURI |                    |

PUXICO R-VIII SCHOOL DISTRICT  
BUILDING I HIGH SCHOOL GYM

GYM - UPPER LEVEL





GYM - LOWER LEVEL

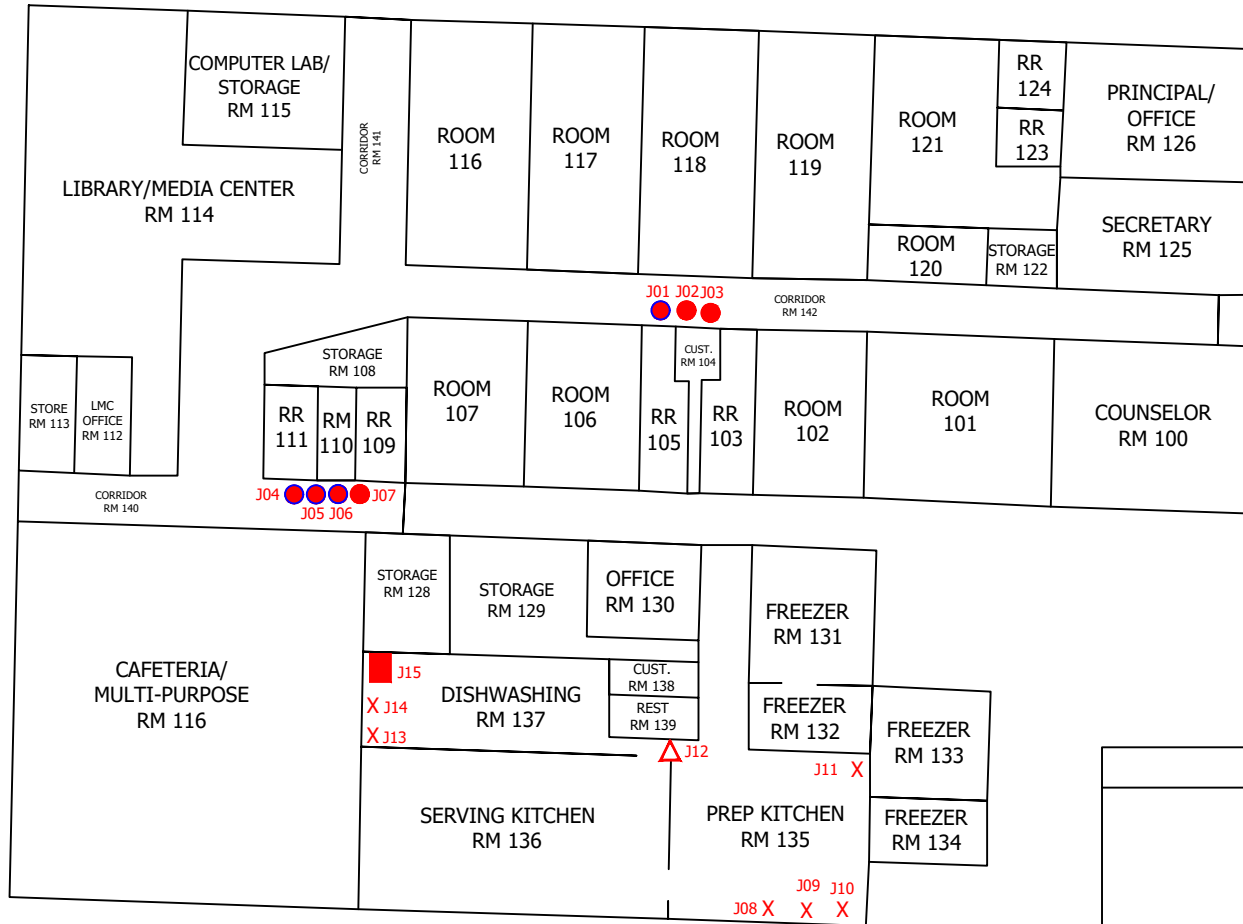


BLDG I

| LEGEND |                   |
|--------|-------------------|
| ●      | DRINK FOUNTAIN    |
| X      | FAUCET            |
| ▲      | ICE MACHINE       |
| *      | MAIN WATER SUPPLY |

|   |   |              |   |  |  |             |
|---|---|--------------|---|--|--|-------------|
|  | CHECKED BY:<br>T. ABERNATHY                       | NOT TO SCALE |  | Kansas City Office Location:<br>1731 Locust Street<br>Kansas City, MO 64108<br>Phone: (417) 890-9500 | BUILDING DIAGRAM   | FIGURE<br>5 |
|   | E.W.I. # 234214<br>DRAWN BY: REH<br>Dec. 24, 2023 |              |   |  | BUILDING I HIGH SCHOOL GYM<br>393 E REED AVENUE<br>PUXICO, STODDARD COUNTY, MISSOURI |             |

# BUILDING J- JUNIOR HIGH SCHOOL



| LEGEND                        |                   |
|-------------------------------|-------------------|
| APPROXIMATE OUTLET LOCATIONS: |                   |
| X                             | FAUCET            |
| ●                             | DRINKING FOUNTAIN |
| ▲                             | ICE MACHINE       |
| ■                             | DISHWASHER        |



CHECKED BY:  
T. Abernathy

E.W.I. # 234214  
DRAWN BY: TW  
December 8, 2023

**NOT TO SCALE**



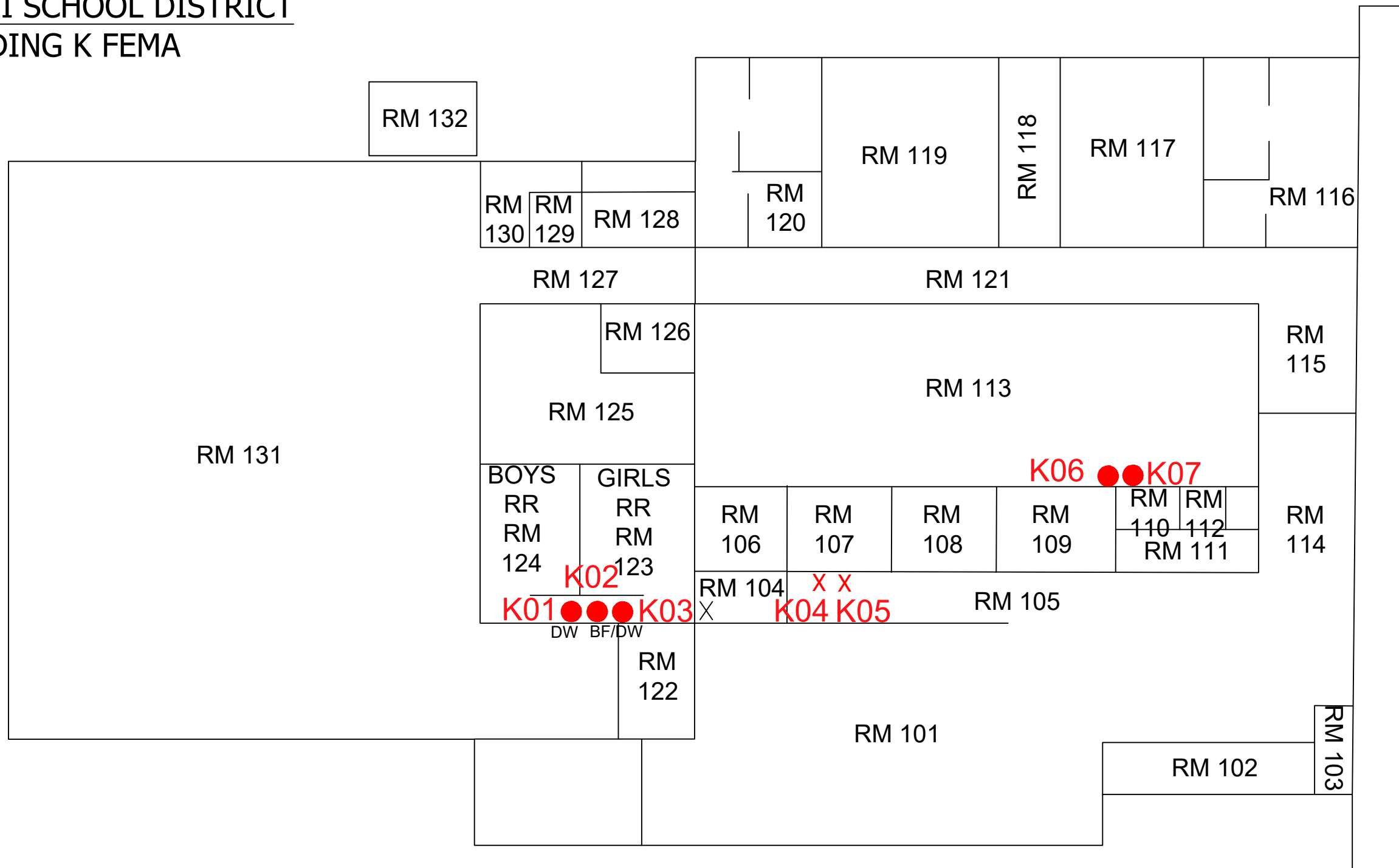
Kansas City Office Location:  
1731 Locust Street  
Kansas City, MO 64108  
Phone: (816) 285-8410

**BUILDING DIAGRAM**


Building J- Junior High School  
398 North Hickman Street  
PUXICO, STODDARD COUNTY, MISSOURI

**FIGURE**  
**6**


**PUXICO R-VIII SCHOOL DISTRICT  
BUILDING K FEMA**



| LEGEND |                   |
|--------|-------------------|
| ●      | FOUNTAIN          |
| X      | FAUCET            |
| *      | MAIN WATER SUPPLY |

|   |   |
|---|---|
|  | CHECKED BY:<br>T. ABERNATHY                       |
|   | E.W.I. # 234214<br>DRAWN BY: REH<br>Dec. 24, 2023 |

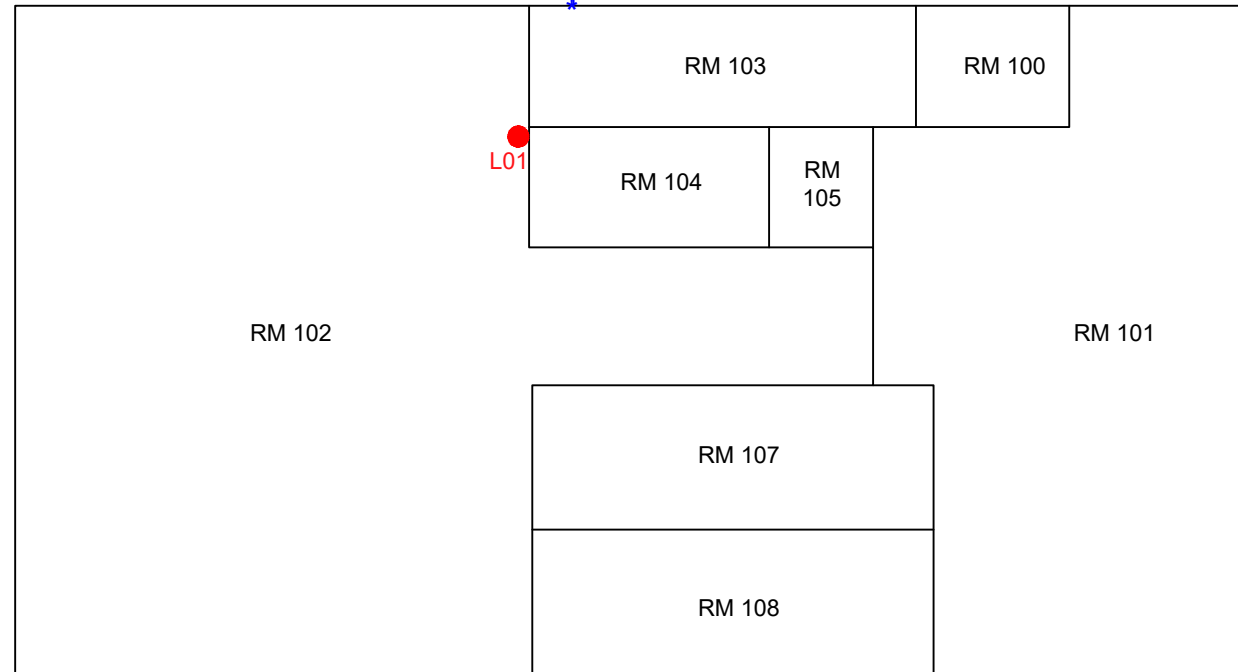
NOT TO SCALE

|   |  |
|---|--|
|  | Kansas City Office Location:<br>1731 Locust Street<br>Kansas City, MO 64108<br>Phone: (417) 890-9500 |
|---|--|

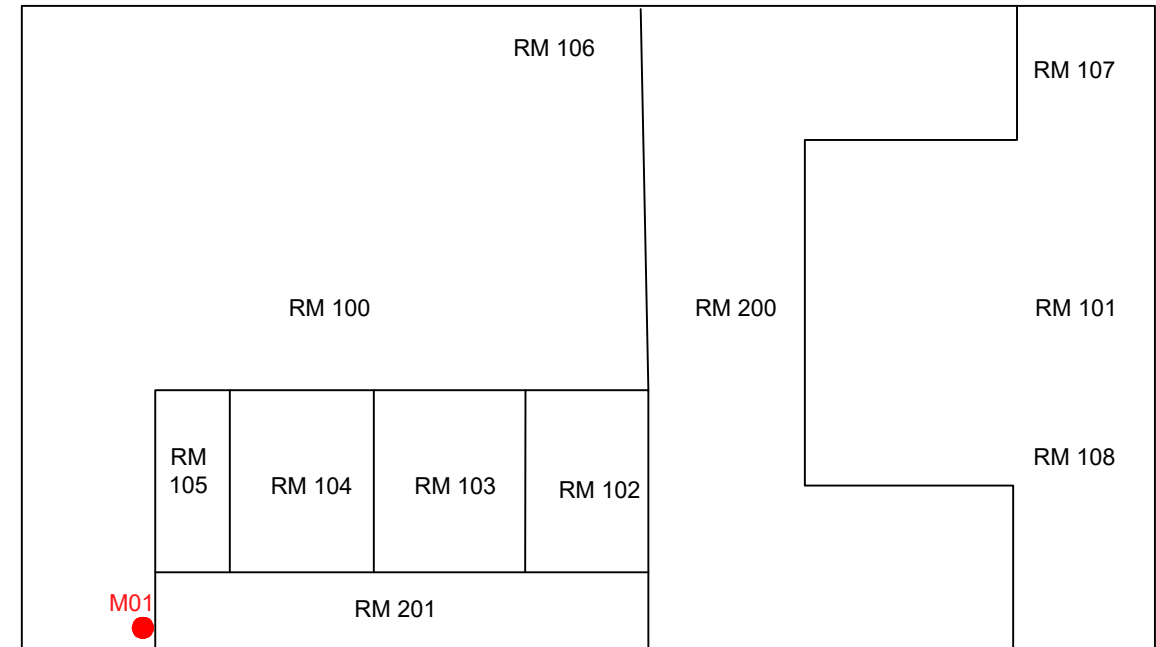
BUILDING DIAGRAM  
BUILDING K FEMA  
393 E REED AVENUE  
PUXICO, STODDARD COUNTY, MISSOURI

FIGURE  
7

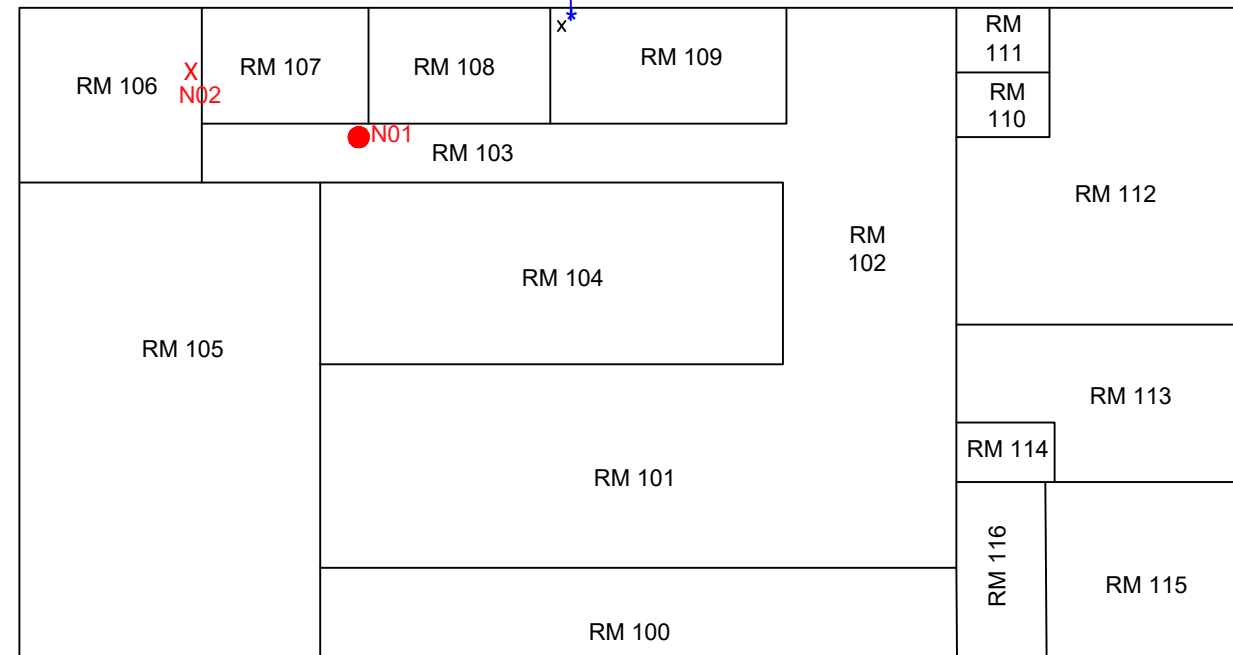
### VO-AG BUILDING L



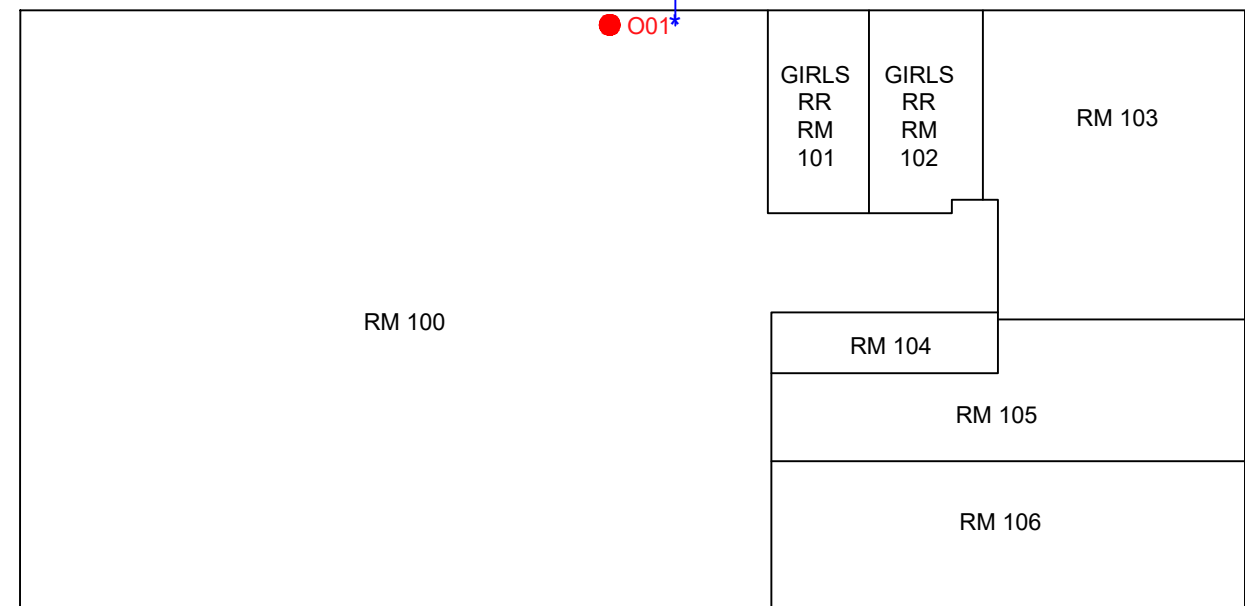
### TRANSPORTATION BUILDING M



### CENTRAL OFFICE BUILDING N



### ALT SCHOOL BUILDING O



#### LEGEND

- FOUNTAIN
- X FAUCET
- \* MAIN WATER SUPPLY



CHECKED BY:  
T. ABERNATHY  
E.W.I. # 234214  
DRAWN BY: REH  
Dec. 24, 2023

NOT TO SCALE



Kansas City Office Location:  
1731 Locust Street  
Kansas City, MO 64108  
Phone: (417) 890-9500

BUILDING DIAGRAM

BUILDING L, M, N & O  
393 E REED AVENUE  
PUXICO, STODDARD COUNTY, MISSOURI

FIGURE  
**8**

## **APPENDIX B – Building Summary**



School District:  
 Person Completing Questionnaire:

Puxico R-VIII  
 Jim Clark & Cindy Crab

Date: 11/2/2023  
 Title: Maintenance Supervisor, Superintendent

| Building                             | Address  | Original Construction Date | Outlet Count | Any Building Maps/Drawings |   | Any Building Additions? |                                      |                 | Where Does Water Enter the Building? | Who Provides Water to the Building? | Any Tanks in the Plumbing System? |  |                         | Notes    |
|--------------------------------------|--|----------------------------|--------------|----------------------------|---|-------------------------|--------------------------------------|-----------------|--------------------------------------|-------------------------------------|-----------------------------------|--|-------------------------|----------|
|                                      |  |                            |              | Yes/No                     | Electronic/<br>Hard Copy<br><i>(see note below)</i> | Yes/No                  | Year of Addition                     | What Was Added? |                                      |                                     | Yes/No                            | Tank Types<br><i>(i.e. boiler, water heaters, water chillers etc.)</i> | Is the tank Lead Lined? |          |
| Elementary-Phase 1                   | 381 East Reed, Puxico, MO 63960                      | 1955                       | 18           | Yes                        | Hard Copy   | Yes                     | documented in next phase             |                 | By elementary office                 | City of Puxico                      | Yes                               | Water Heater   | No                      | 144      |
| Elementary-Phase 2                   | 381 East Reed, Puxico, MO 63960                      | 1971                       | 1            | Yes                        | Hard Copy   | Yes                     | documented in next phase             |                 | By elementary office                 | City of Puxico                      | No                                |  |                         |          |
| Elementary- Phase 3                  | 381 East Reed, Puxico, MO 63960                      | 1973                       | 6            | Yes                        | Hard Copy   | Yes                     | documented in next phase             |                 | Southeast corner of building         | City of Puxico                      | No                                |  |                         |          |
| Elementary- Phase 4                  | 381 East Reed, Puxico, MO 63960                      | 2002-2003                  | 4            | Yes                        | Hard Copy   | Yes                     | documented in next phase             |                 | By elementary office                 | City of Puxico                      | Yes                               | Water Heater   | No                      | 128      |
| Elementary Art Room                  | 381 East Reed, Puxico, MO 63960                      | 1979                       | 0            | Yes                        | Hard Copy   | No                      |                                      |                 | By elementary office                 | City of Puxico                      | No                                |  |                         |          |
| Special Education Classroom Building | 381 East Reed, Puxico, MO 63960                      | 2009-2010                  | 2            | Yes                        | Hard Copy   | No                      |                                      |                 | Northeast Corner of building         | City of Puxico                      | Yes                               | Water Heater   | No                      | 103      |
| Preschool-Modular                    | 382 East Reed, Puxico, MO 63960                      | 1999                       | 1            | Yes                        | Hard Copy   | No                      |                                      |                 | West side of building                | City of Puxico                      | Yes                               | Water Heater   | No                      | 103      |
| Junior High-Phase 1                  | 466 N. Hickman, Puxico, MO 63960                     | 1996                       | 3            | Yes                        | Hard Copy   | Yes                     | documented in next phase & cafeteria |                 | Room 104                             | City of Puxico                      | Yes                               | Water Heater   | No                      | 104      |
| Junior High-Phase 2                  | 466 N. Hickman, Puxico, MO 63960                     | 2005                       | 1            | Yes                        | Hard Copy   | Yes                     | last addition to building            |                 | Room 104 in Phase 1                  | City of Puxico                      | No                                |  |                         |          |
| Cafeteria/Media Center               | 466 N. Hickman, Puxico, MO 63960                     | 1998                       | 7            | Yes                        | Hard Copy   | Yes                     | documented in JH-Phase2              |                 | Room 108                             | City of Puxico                      | Yes                               | Water Heater   | No                      | 108, 128 |
| High School-Ag Building              | 394 N. EL Hawk Street, Puxico, MO 63960              | 1955                       | 1            | Yes                        | Hard Copy   | No                      |                                      |                 | West side of building                | City of Puxico                      | No                                |  |                         |          |
| High School-Alternative School       | N. Hickman, Puxico, MO 63960                         | 1970                       | 1            | Yes                        | Hard Copy   | No                      |                                      |                 | West side of building                | City of Puxico                      | No                                |  |                         |          |
| High School Building                 | 441 N. Hickman, Puxico, MO 63960                     | 2008                       | 9            | Yes                        | Hard Copy   | No                      |                                      |                 | Lower Level, Room 115                | City of Puxico                      | Yes                               | Water Heater   | No                      | 201      |
| Arnold Ryan Gymnasium                | 443 N. Hickman, Puxico MO 63960                      | 1958                       | 6            | Yes                        | Hard Copy   | Yes                     | documented with FEMA                 |                 | S.W. Corner of building, rm 107      | City of Puxico                      | Yes                               | Water Heater   | No                      | 107, 113 |
| Puxico Activity Center (FEMA)        | 490 N. Highway 51, Puxico, MO 63960                  | 2013                       | 5            | Yes                        | Hard Copy   | No                      | last addition to building            |                 | S.W. Corner of building, rm 102      | City of Puxico                      | Yes                               | Water Heater   | No                      | 104      |
| Puxico Transportation/Maintenance    | 395 N EL Hawk Street Puxico, MO 63960                | 1997                       | 1            | Yes                        | Hard Copy   | No                      |                                      |                 | East side of building                | City of Puxico                      | Yes                               | Water Heater   | No                      | 105      |
| Special Education Administration     | 437 N. Bedford, Puxico, MO 63960                     | 1969                       | 1            | Yes                        | Hard Copy   | Yes                     | 2023 meeting room                    |                 | S.W. Corner of building,             | City of Puxico                      | Yes                               | Water Heater   | No                      | 101      |
| Puxico Central Office                | 481 N. Bedford, Puxico, MO 63960                     | 2005                       | 2            | Yes                        | Hard Copy   | No                      |                                      |                 | West side of building                | City of Puxico                      | Yes                               | Water Heater   | No                      | 109      |
| Technical High School                | OFF CAMPUS-Not District Property-<br>Virtual Classes |                            |              |                            |   |                         |                                      |                 |                                      |                                     |                                   |  |                         |          |
| ^^ Enter New line above ^^           |  |                            |              |                            |   |                         |                                      |                 |                                      |                                     |                                   |  |                         |          |

**Total Outlets** 70

## **APPENDIX C – Outlet Inventory**

School District:

Puxico R-VIII Elementary All Phases

Date: 11/2/2023

Person Completing Questionnaire: Jim Clark & Cindy Crab

Title: Maintenance Supervisor, Superintendent

| Outlet Type<br><i>(see examples below)</i> | Location<br><i>(hall, room #, etc.)</i> | Specific<br>Location | Map ID | SAMPLE ID         |
|--|---|----------------------|--------|-------------------|
|  |   |                      |        |                   |
| Phase 1 Water Fountains                    | BLDG A                                  | Room 114             | A01    | 01-01-CR-DW-P-001 |
| Phase 1 Water Fountains                    | BLDG A                                  | Room 113             | A02    | 01-01-CR-DW-P-002 |
| Phase 1 Water Fountains                    | BLDG A                                  | Room 112             | A03    | 01-01-CR-DW-P-003 |
| Phase 1 Water Fountains                    | BLDG A                                  | Room 111             | A04    | 01-01-CR-DW-P-004 |
| Phase 1 Water Fountains                    | BLDG A                                  | Room 110             | A05    | 01-01-CR-DW-P-005 |
| Phase 1 Water Fountains                    | BLDG A                                  | Room 109             | A06    | 01-01-CR-DW-P-006 |
| Phase 2 Water Fountains                    | BLDG A                                  | Room 108             | A07    | 01-01-CR-DW-P-007 |
| Phase 1 Water Fountains                    | BLDG B                                  | Room 115             | B01    | 02-01-CR-DW-P-008 |
| Phase 1 Bottle Filler                      | BLDG B                                  | Room 116             | B02    | 02-01-CR-BF-P-009 |
| Phase 1 Water Fountains                    | BLDG B                                  | Room 117             | B03    | 02-01-CR-DW-P-010 |
| Phase 1 Water Fountains                    | BLDG B                                  | Room 118             | B04    | 02-01-CR-DW-P-011 |
| Phase 1 Water Fountains                    | BLDG C                                  | Room 121             | C01    | 03-01-CR-DW-P-013 |
| Phase 1 -Bottle Filler                     | BLDG C                                  | Room 121             | C02    | 03-01-CR-BF-P-014 |
| Phase 1 Water Fountains                    | BLDG C                                  | Room 122             | C03    | 03-01-CR-DW-P-015 |
| Phase 1 Water Fountains                    | BLDG C                                  | Room 123             | C04    | 03-01-CR-DW-P-016 |
| Phase 4 Water Fountain                     | BLDG D                                  | ROOM 126             | D01    | 04-01-CR-DW-P-014 |
| Phase 4 Water Fountain                     | BLDG D                                  | ROOM 127             | D02    | 04-01-CR-DW-P-015 |
| Phase 4 Water Fountain                     | BLDG D                                  | ROOM 128             | D03    | 04-01-CR-DW-P-016 |
| Phase 4 Water Fountain                     | BLDG D                                  | Room 131             | D04    | 04-01-CR-DW-P-017 |
| Phase 4 Water Fountain                     | BLDG D                                  | Room 135             | D05    | 04-01-CR-DW-P-018 |
| Phase 1 Water Fountains                    | BLDG E                                  | Front of RM 149      | E01    | 05-01-HW-DW-P-019 |
| Phase 1 -Bottle Filler                     | BLDG E                                  | Front of RM 149      | E02    | 05-01-HW-BF-P-020 |
| Phase 1 Water Fountains                    | BLDG E                                  | Front of RM 144      | E03    | 05-01-HW-DW-P-021 |
| Phase 3 Water Fountain                     | BLDG F                                  | Room 107             | F01    | 06-01-CR-DW-P-022 |
| Phase 3 Water Fountain                     | BLDG F                                  | Room 106             | F02    | 06-01-CR-DW-P-023 |
| Phase 3 Water Fountain                     | BLDG F                                  | Room 104             | F03    | 06-01-CR-DW-P-024 |
| Phase 3 Water Fountain                     | BLDG F                                  | Room 103             | F04    | 06-01-CR-DW-P-025 |
| Phase 3 Water Fountain                     | BLDG F                                  | Room 102             | F05    | 06-01-CR-DW-P-026 |
| Phase 3 Water Fountain                     | BLDG F                                  | Room 100             | F06    | 06-01-CR-DW-P-027 |

|           |                               |
|-----------|-------------------------------|
| <b>29</b> | <b>Total Building Outlets</b> |
|-----------|-------------------------------|

**School District:**

Puxico R-VIII Special Education

**Date:** 11/2/2023

**Person Completing Questionnaire:** Jim Clark & Cindy Crab

**Title:** Maintenance Supervisor, Superintendent

| Outlet Type<br><i>(see examples below)</i> | Location<br><i>(hall, room #, etc.)</i> | Specific<br>Location |        |                   |
|--|---|----------------------|--------|-------------------|
|  |   |                      | Map ID | SAMPLE ID         |
| SPED Classrooms Faucet                     | Lower Level                             | Room 106             | G01    | 07-01-CR-CF-P-028 |
| SPED Classrooms Faucet Sprayer             | Lower Level                             | Room 106             | G02    | 07-01-CR-CF-P-029 |
| SPED Classrooms Fountain                   | Upper Level                             | Room 202             | G03    | 07-02-CR-DW-P-030 |
|  |   |                      |        |                   |
|  |   |                      |        |                   |
|  |   |                      |        |                   |
|  |   |                      |        |                   |
|  |   |                      |        |                   |
| <b>3</b>                                   | <b>Total Building Outlets</b>           |                      |        |                   |

**School District:**

Puxico-VIII Pre K

**Date:** 11/2/2023

**Person Completing Questionnaire:** Jim Clark & Cindy Crab

**Title:** Maintenance Supervisor, Superintendent

| Outlet Type<br><i>(see examples below)</i> | Location<br><i>(hall, room #, etc.)</i> | Specific<br>Location |        |                   |
|--|---|----------------------|--------|-------------------|
|  |   |                      | Map ID | SAMPLE ID         |
| Preschool - Water Fountain                 | Room 100                                | Near Restrooms       | H01    | 08-01-HW-DW-P-031 |
|  |   |                      |        |                   |
|  |   |                      |        |                   |
|  |   |                      |        |                   |
|  |   |                      |        |                   |
|  |   |                      |        |                   |
|  |   |                      |        |                   |
|  |   |                      |        |                   |
| <b>1</b>                                   | <b>Total Building Outlets</b>           |                      |        |                   |

School District:

Puxico R-VIII High School

Date: 11/2/2023

Person Completing Questionnaire:

Jim Clark & Cindy Crab Title: Maintenance Supervisor, Superintendent

| Outlet Type<br><i>(see examples below)</i> | Location<br><i>(hall, room #, etc.)</i> | Specific<br>Location    | Map ID | SAMPLE ID           |
|--|---|-------------------------|--------|---------------------|
|  |   |                         |        |                     |
| Water Fountain                             | Hallway                                 | High School Lower Level | I01    | 09-01-HW-DW-P-032   |
| Bottle Filler                              | Hallway                                 | High School Lower Level | I02    | 09-01-HW-BF-P-033   |
| Faucet                                     | FACS                                    | High School Lower Level | I03    | 09-01-CR-KF-P-034   |
| Faucet                                     | FACS                                    | High School Lower Level | I04    | 09-01-CR-KF-P-035   |
| Faucet                                     | FACS                                    | High School Lower Level | I05    | 09-01-CR-KF-P-036   |
| Dishwasher                                 | FACS                                    | High School Lower Level | I06    | 09-01-CR-DISH-P-037 |
| Faucet                                     | FACS                                    | High School Lower Level | I07    | 09-01-CR-KF-P-038   |
| Dishwasher                                 | FACS                                    | High School Lower Level | I08    | 09-01-CR-DISH-P-039 |
| Water Fountain                             | Hallway                                 | High School Upper Level | I09    | 09-01-HW-DW-P-040   |
| Water Fountain                             | BLDG I Arnold Ryan Gymnasium            | Room 123 Lower Level    | I10    | 09-01-HW-DW-P-041   |
| Bottle Filler                              | BLDG I Arnold Ryan Gymnasium            | Room 123 Lower Level    | I11    | 09-01-HW-BF-P-042   |
| Water Fountain                             | BLDG I Arnold Ryan Gymnasium            | Room 126 Lower Level    | I12    | 09-01-HW-DW-P-043   |
| Faucet                                     | BLDG I Arnold Ryan Gymnasium            | Room 107 Upper Level    | I13    | 09-02-CR-CF-P-044   |
| Water Fountain                             | BLDG I Arnold Ryan Gymnasium            | Room 101 Upper Level    | I14    | 09-02-HW-DW-P-045   |
| Bottle Filler                              | BLDG I Arnold Ryan Gymnasium            | Room 101 Upper Level    | I15    | 09-02-HW-BF-P-046   |
| Faucet                                     | BLDG I Arnold Ryan Gymnasium            | Room 101 Upper Level    | I16    | 09-02-HW-CF-P-047   |
| Ice Machine                                | BLDG I Arnold Ryan Gymnasium            | Room 101 Upper Level    | I17    | 09-02-HW-IM-P-048   |
|  |   |                         |        |                     |

|           |                               |
|-----------|-------------------------------|
| <b>17</b> | <b>Total Building Outlets</b> |
|-----------|-------------------------------|

School District:

Puxico R-VIII Jr.High School

Date: 11/2/2023

Person Completing Questionnaire:

Jim Clark & Cindy Crab Title: Maintenance Supervisor, Superintendent

| Outlet Type<br><i>(see examples below)</i> | Location<br><i>(hall, room #, etc.)</i> | Specific<br>Location | Map ID | SAMPLE ID         |
|--|---|----------------------|--------|-------------------|
|  |   |                      |        |                   |
| JH Phase 1 - Bottle Filler                 | Hallway - Corridor RM 142               | Junior High School   | J01    | 10-1-HW-BF-P-049  |
| JH Phase 1 - Water Fountains               | Hallway - Corridor RM 142               | Junior High School   | J02    | 10-1-HW-DW-P-050  |
| JH Phase 1 - Water Fountains               | Hallway - Corridor RM 142               | Junior High School   | J03    | 10-1-HW-DW-P-051  |
| Bottle Filler                              | Hallway                                 | Junior High School   | J04    | 10-HW-BF-P-052    |
| Water Fountains                            | Hallway                                 | Junior High School   | J05    | 10-HW-BF-P-053    |
| Water Fountains                            | Hallway                                 | Junior High School   | J06    | 10-HW-BF-P-054    |
| Water Fountains                            | Hallway                                 | Junior High School   | J07    | 10-HW-BF-P-055    |
| Faucet                                     | Kitchen                                 | Junior High School   | J08    | 10-KIT-KF-P-056   |
| Faucet                                     | Kitchen                                 | Junior High School   | J09    | 10-KIT-KF-P-057   |
| Faucet                                     | Kitchen                                 | Junior High School   | J10    | 10-KIT-KF-P-058   |
| Faucet                                     | Kitchen                                 | Junior High School   | J11    | 10-KIT-KF-P-059   |
| Ice Maker                                  | Kitchen                                 | Junior High School   | J12    | 10-KIT-IM-P-060   |
| Faucet                                     | Kitchen                                 | Junior High School   | J13    | 10-KIT-KF-P-061   |
| Faucet                                     | Kitchen                                 | Junior High School   | J14    | 10-KIT-KF-P-062   |
| Dishwasher                                 | Kitchen                                 | Junior High School   | J15    | 10-KIT-DISH-P-063 |
|  |   |                      |        |                   |
| <b>15</b>                                  | <b>Total Building Outlets</b>           |                      |        |                   |

School District:

Puxico R-VIII FEMA Building

Date: 11/2/2023

Person Completing Questionnaire:

Jim Clark & Cindy Crab Title: Maintenance Supervisor, Superintendent

| Outlet Type<br><i>(see examples below)</i> | Location<br><i>(hall, room #, etc.)</i> | Specific<br>Location |        |                     |
|--|---|----------------------|--------|---------------------|
|  |   |                      | Map ID | SAMPLE ID           |
| Water Fountain                             | Puxico Activity Center (FEMA)           | Gym Restrooms        | K01    | 11-01-RR-DW-P-064   |
| Water Fountain                             | Puxico Activity Center (FEMA)           | Gym Restrooms        | K02    | 11-01-RR-DW-P-065   |
| Bottle Filler                              | Puxico Activity Center (FEMA)           | Gym Restrooms        | K03    | 11-01-RR-BF-P-066   |
| Faucet                                     | Puxico Activity Center (FEMA)           | Concession Room 105  | K04    | 11-01-CS-KF-P-067   |
| Faucet Sprayer                             | Puxico Activity Center (FEMA)           | Concession Room 106  | K05    | 11-01-CS-KF-P-068   |
| Water Fountain                             | Puxico Activity Center (FEMA)           | Band Room 113        | K06    | 11-01-BAND-DW-P-069 |
| Bottle Filler                              | Puxico Activity Center (FEMA)           | Band Room 113        | K06    | 11-01-BAND-BF-P-070 |
| ^^ Enter New Line Above ^^                 |   |                      |        |                     |
| <b>7</b>                                   | <b>Total Building Outlets</b>           |                      |        |                     |



School District:

Puxico R-VIII All Other Buildings

Date: 11/2/2023

Person Completing Questionnaire:

Jim Clark & Cindy Crab Title: Maintenance Supervisor, Superintendent

| Outlet Type<br><i>(see examples below)</i> | Location<br><i>(hall, room #, etc.)</i> | Specific<br>Location | Map ID | SAMPLE ID             |
|--|---|----------------------|--------|-----------------------|
|  |   |                      |        |                       |
| Water Fountain                             | BLDG L High School-Ag Building          | Shop Room 102        | L01    | 12-01-AG-DWP-071      |
| Water Fountain                             | BLDG M Transportation/Maintenance       | Garage Room 100      | M01    | 13-01-GARAGE-DW-P-072 |
| Water Fountain                             | BLDG O High School-Alternative School   | Room 100             | O01    | 14-01-CR-DW-P-073     |
| Water Fountain (1)                         | BLDG N Central Office                   | Hallway 103          | N01    | 15-01-HW-DW-P-074     |
| Sink                                       | BLDG N Central Office                   | Break room 106       | N02    | 16-01-CR-KF-P-075     |
|  |   |                      |        |                       |
| <b>4</b>                                   | <b>Total Building Outlets</b>           |                      |        |                       |