



**Mandaree School**  
**P.O. Box 488**  
**Mandaree, ND 58757**  
*"Home of the Warriors"*



---

## **INSTRUCTIONAL PLAN**

### **Updated: September 13, 2023**

Mandaree School Families,

The pandemic created a complex response to a highly contagious disease. Schools and communities came together and responded to the challenges and found a way to provide instruction that was meaningful.

We have moved beyond the initial COVID response and look forward to a more normal school year.

The District is required to have a plan that will align with state and federal requirement for 23-24 school year.

We appreciate you time in reviewing the Instructional Plan.

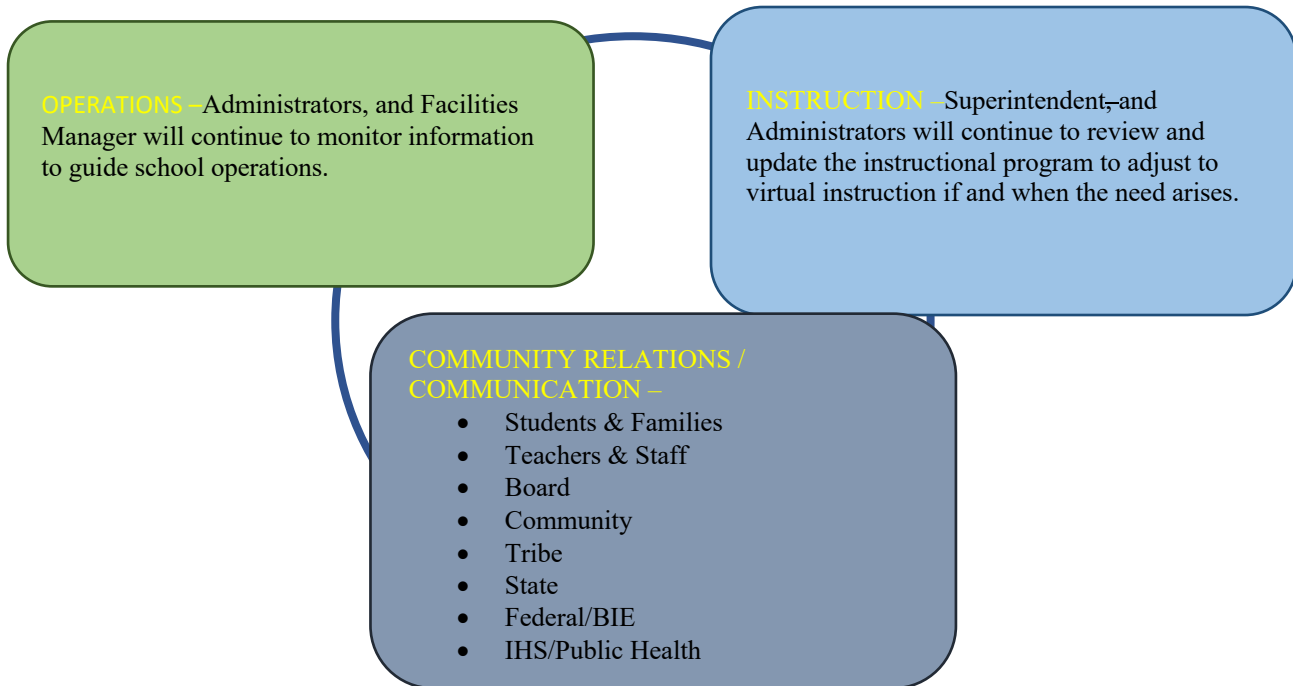
Respectfully,

Hector Serna  
Superintendent

Kelly Bradfield  
School Board President

## COVID-19 Response Team & Coordinators

This organizational structure was crafted to assist in the development and monitoring of the district's health and safety protocols.



The three components have been identified as key operational teams that consist of multiple departments. Each operational team will work to provide an instructional program that is responsive the student needs as defined by current conditions relative to infectious diseases.

School operations will continue as normal as possible with the inclusion of precautions recognized to control transmission of COVID-19. The District will remain open and cleared for operations until an emergency is declared by the North Dakota Department of Health.

## Instructional Models

The education delivery system will be traditional face-to-face instruction. Virtual Learning will be used as allowed by School Board Policy FDJ Virtual Learning Due to Weather/Other Conditions. School and/or classroom closure will be determined by administration on a targeted basis as necessary.



### **Traditional Learning**

All instruction is delivered in-person. Teachers and students maintain a normal daily schedule. Safety precautions are implemented to enhance staff and student safety.



## Virtual Learning

All instruction is provided through a virtual learning format with teachers providing instruction from their classroom. Students unable to log into the virtual platform will be marked absent and given the opportunity to make up assignments on their return to the classroom. This aligns with standard procedures for any absence.

## Health and Safety Guidance

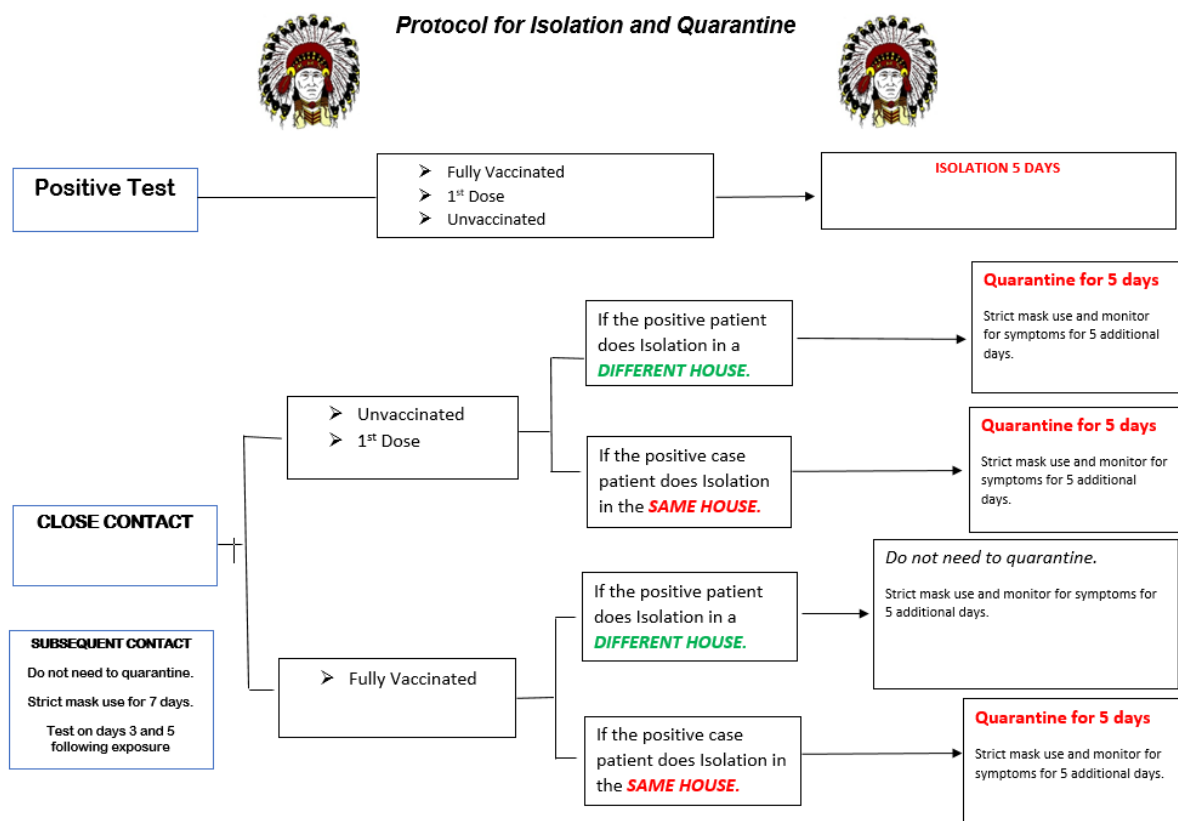
The district strives to provide a healthy and safe environment for all who occupy our schools.

The following guidelines are intended to provide a framework for the district's response to COVID-19.

### Student & Staff Health

Monitoring the health of students and staff will be an important component of a safe and healthy educational environment. Mandaree School will take the following measures to ensure all students and staff are healthy while they are at school. If you are feeling ill:

- Inform your supervisor immediately and wear a face mask until they can be replaced if supervising students at that time.
- Leave the school building/grounds and consult with a health care professional.
- Follow isolation and quarantine guidelines.



\*If you are exposed to COVID-19 within 90 days of illness onset, it is not recommended that you quarantine for those exposures. [NDDoH](#)

SCHOOL BOARD APPROVED: 3/10/2022

When a student or staff member has been isolated or quarantined as directed by NDDoH or local Health unit they will be allowed to return to school after meeting Isolation and Quarantine Protocols. Those students at home due to being in close contact with someone with COVID-19 are expected to make up all assigned work.

### **District-wide Practices**

- Social distancing where possible and reasonable.
- Buildings routinely cleaned and disinfected according to CDC guidelines. Special focus on high touch/traffic areas.
- Handwashing integrated throughout the day.
- Hand sanitizer available throughout each building.
- Support and train parents on use of technology tools and online curricular resources.
- Protective measures (cleaning and sanitizing) will continue in classrooms and office spaces.
- Limited use of shared materials and supplies in classrooms.
- Student desks arranged to allow for cohort groups and social distancing where possible and reasonable.
- Students when moving around the building will try to maintain social distance where possible and reasonable.
- Guidance and directives from the NDHSAA and other governing boards will be used to guide extra-curricular activities.

### **Masks**

Masks are voluntary for all students and employees.

Masks are required for 5 days following a quarantine for exposure or active COVID-19.

### **Facilities and Cleaning**

Cleaning will take place daily following cleaning schedules set by facilities manager.

Disinfecting will occur twice daily; this will include all high traffic areas and high-contact surface.

Facilities will be responsible for all deep cleaning procedures. “Foggers” will be used to disinfect classrooms, hallways, and other school building areas when deemed necessary.



**Mandaree School**  
**P.O. Box 488**  
**Mandaree, ND 58757**  
*"Home of the Warriors"*



PARENTS: BE SURE YOUR CONTACT INFORMATION IS CORRECT IN NASIS SO THAT IF THE NEED ARISES WE CAN CONTACT YOU QUICKLY IF YOUR CHILD NEEDS TO BE PICKED UP.

**Please keep this document for reference. This information is also available on the District website.**

### **BEFORE SCHOOL!**

Parents are asked to review this daily health checklist by answering these questions before sending their child to school.

(Parents do not need to send the questionnaire to school)

---

Has your child had close contact with a confirmed case of COVID-19 in the past 14 days?

Yes\_\_\_\_ No\_\_\_\_

Does your child have a new or worsening shortness of breath?

Yes\_\_\_\_ No\_\_\_\_

Does your child have new or worsening cough?

Yes\_\_\_\_ No\_\_\_\_

Does your child have a fever of 100.4 or greater?

Yes\_\_\_\_ No\_\_\_\_

Does your child have chills?

Yes\_\_\_\_ No\_\_\_\_

Does your child have a sore throat?

Yes\_\_\_\_ No\_\_\_\_

Does your child have a new loss of taste or smell?

Yes\_\_\_\_ No\_\_\_\_



If **YES** to any of the questions **STOP!**

Do not send your child to school. Contact your healthcare provider. Contact your child's school to inform them of your child's absence.



If you are able to answer **NO** to all questions, go to school.