



GUIDE *for schools*

2023-24
School Year



**FAYETTEVILLE
PUBLIC SCHOOLS**
Since 1871

Letter from the Superintendent

Welcome to the 2023-24 school year and to a year full of learning and success. We offer this guide to provide you with information that will help you best prepare for and enjoy a safe and successful experience in Fayetteville Public Schools.

I remain confident that together we will overcome any challenges from COVID-19. To best protect our students, staff members and the community from the spread of the virus, please see Board Policy 1.19. We are grateful for your assistance in keeping everyone healthy, so that we may continue to have school together.

Updates will be posted on the district website and shared with staff and families. Please keep in mind that a transition to virtual learning continues to be a possibility as our situation changes.

This year, Fayetteville Public Schools offers two options for learning:

- Traditional (Onsite) Learning (K-12)
- Fayetteville Virtual Academy (K-12)

If it is necessary to close a classroom or a school due to COVID-19, students will have options for virtual learning so that school continues.

Please review the information presented in this guide as you prepare for the coming year. I appreciate your patience, support, and collaboration as we move forward. Please do not hesitate to contact me, your school principal, or district leader if you have questions.

John Mulford, Ed.D.
Superintendent

Table of Contents

Letter from the Superintendent	2
State of Arkansas Guidance	5
COVID-19 & Safety Considerations	5
Face Masks	5
FPS COVID-19 Self Screen	7
Options for Learning	8
Traditional (Onsite)	8
Fayetteville Virtual Academy	9
Pre-K Programs	9
Procedures While Learning On Campus	9
Arrival	9
Tardies	10
Dismissal/Departure/Check-out	10
Attendance	10
Handwashing	11
School Supplies	11
Classrooms	11
Libraries	12
Class Transitions & Hallways	13
K-6 Art, Music, & PE	13
7-12 PE	13
Middle School, Junior High & High School Electives	14
AP Classes	14
High School Band, Athletics & Choir	14
Group Work & Labs	14
Personal Items	15

Outdoor Recess (Elementary)	15
Open Houses & Other Activities	15
Transportation	15
Social & Emotional Learning	16
Cleaning Protocols	16
Technology	17
Meal Service	17
Special Services	18
504 Accommodation Services	19
Social Services	20
Gifted & Talented	20
English Language Learners	21
 Professional Development	 21
Certified Staff	21
Classified Staff	21
Parents & Guardians	21
 Human Resources & Personnel	 22
 COVID-19 Protocols - Response to Positive Cases	 23
When Someone is Sick	23
Positive Cases of COVID-19	24
Terminology	25
COVID-19 Communication Protocols.....	26

State of Arkansas Guidance

The Department of Elementary and Secondary Education (DESE) has released guidance regarding the reopening of school. Below are links to this important information.

[COVID Information from DESE](#)

COVID-19 & Safety Considerations

Face Masks

Fayetteville School District Policy 1.19 Wearing Masks and Face Coverings

1.19 – WEARING MASKS AND FACE COVERINGS

Until further action of the Board, it is strongly recommended that all visitors to Fayetteville Public Schools wear a mask or face covering while present in any school building, indoor facility or other indoor area of a school campus.

Masks are required when riding in school provided transportation until such time that the CDC mandate is repealed or otherwise expires, at which point it will be strongly recommended that masks be worn when riding in school provided transportation.

Options for Learning

There are two options for Fayetteville Public School students:

- Traditional (Onsite) Learning (K-12)
- Fayetteville Virtual Academy (K-12)

Please see the [Options for Learning Chart](#) for a comparison of the options.

Traditional (Onsite) Learning K-12

This option is for families preferring in-person on-site face-to-face instruction at school. Students will attend their assigned school, for five (5) days of on-site face-to-face instruction.

This traditional learning environment will incorporate a face-to-face learning model with the ability to transition to virtual learning should buildings or classrooms close due to COVID-19. Attendance will be taken daily. Any mandated transition to full-time virtual (offsite) instruction will be provided by the child's current teacher.

Fayetteville Virtual Academy K-12

Fayetteville Virtual Academy, available by application for grades K-12, utilizes a blended approach to online learning by providing a web-based curriculum. FVA employs FPS teachers who are certified in the State of Arkansas.

FVA follows the FPS traditional school calendar ensuring that students complete their courses on time and stay on track for graduation. FVA offers a large variety of courses from multiple sources, creating unique opportunities for students. Fayetteville Virtual Academy requires an application to be admitted. Please visit fva.fayar.net to learn more.

Pre-K Programs

Pre-K is primarily funded by Arkansas Better Chance for School Success, or ABCSS. The state ABCSS office has issued a directive which limits the options for reopening Pre-K to one choice. ABCSS is requiring that students attend in person 5 days per week. There will be no virtual or hybrid option when Pre-K reopens. In the event that schools close, currently enrolled Pre-K students will pivot to virtual.

Procedures While Learning On Campus

Handwashing

- Handwashing reduces the spread of infections, including COVID-19, and is recommended by CDC and ADH to be a part of the student education plan.
- Students and staff should wash their hands for at least 20 seconds (approximately the length of singing the "Happy Birthday" song twice.)

○

Middle, Junior High, and High School Electives

Please consult your school-provided guide for detailed information on electives.

High School Band, Athletics & Choir

[Arkansas Activities Association \(AAA\)](#) offerings will be provided as allowed (such as team sports, band, spirit squads), please see link above for complete list and guidelines. More guidance will be forthcoming, pending approval of state/national guidelines.

Personal Items

- The borrowing or sharing of items by students will be discouraged.
- Everyone is encouraged to bring a filled water bottle from home.

Outdoor Recess (Elementary)

- Recess durations will remain 40 minutes total each day.

Social & Emotional Learning

The district has incorporated a variety of Social and Emotional Learning (SEL) tools into the curriculum and the professional development for the coming school year to promote positive social behaviors for student success.

Elementary and Middle School

- [Choose Love](#)
- [Second Step](#)

Junior High and High School

- [Habitudes](#)

Technology

- FPS is a 1:1 district, all students in kindergarten through twelfth grade are assigned a device for learning. FPS students will be provided a device once school begins.
- If your child kept the Chromebook issued to them last school year, please make sure they bring it to school the first day of school in good working condition. If your child's device is not in good working order please drop it off at your zoned school as soon as possible.
- Insurance may be purchased online at <https://vstore.fayar.net/>
- Staff members experiencing problems with a FPS device should contact their building Technology Integration Specialist.
- Students experiencing problems with their device should contact their school office to let them know about the issue.
- Families should reach out to local Internet providers to explore low-cost options available that meet their Internet access needs. Those who need additional support should contact their building principal.

FPS Meal Service

Traditional (Onsite) Meal Service:

- Breakfast and lunch provided Monday - Friday for students.

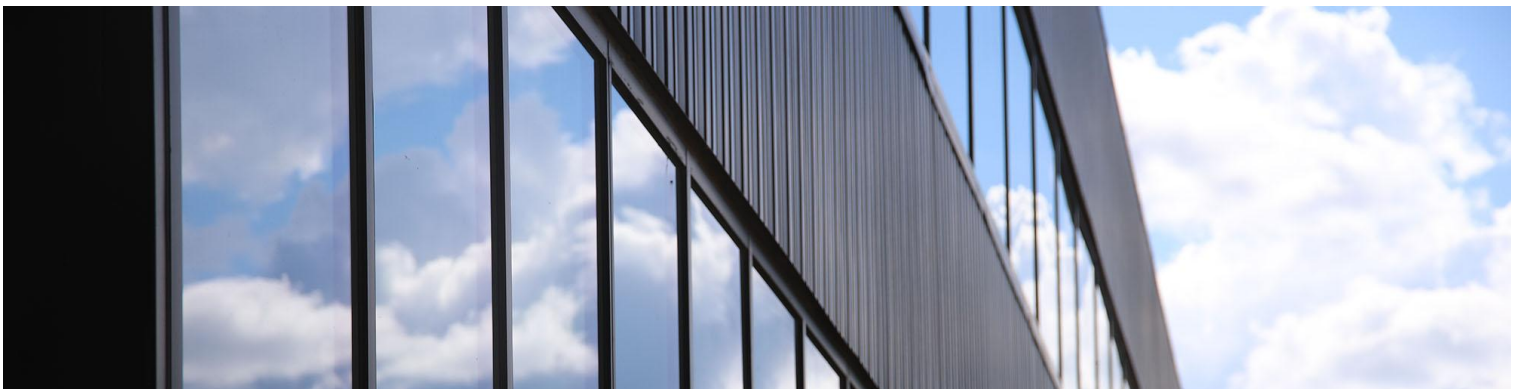
Special Services

- Specialized instructional and related services will continue to be provided to students with disabilities for all learning options.
- Contingency plans will be used as part of each child's IEP in the event students in the traditional setting have to pivot to a virtual setting. The child's special education teacher and service providers will discuss with parents how the services within the IEP will continue to be provided during virtual learning.
- General education teachers will have access to the student IEPs of those on their class rosters.
 - *IEPs outline individual students' classroom modifications and accommodations.*
 - *Teachers are responsible for implementing the modifications and accommodations.*

- Any evaluations that are unable to be completed during a school closure will be completed without any further delay once school resumes.
- Virtual IEP meetings will continue to be utilized as an option to ensure appropriate social distancing requirements can be met.
- Physician guidance and Individual Healthcare Plans (IHPs) will be followed for students with disabilities with medical conditions that require an individual healthcare plan. Students who have chronic medical conditions, are medically fragile, or have health related disabilities will have their individual situation assessed by the school nurse and appropriate educational team members. Individual Education Plans (IEPs), 504 Plans, IHPs and any other relevant documentation will be reviewed. Parents will be included as a relevant team member and will be collaboratively involved in team decision making.
- Should a student be unable to attend school due to a health condition, consideration will be given to all service delivery options including homebound instruction. The service delivery, time, and frequency will be reviewed and agreed upon collaboratively by the child's parent and educational team.

504 Accommodation Services

- Classroom teachers will have access to their students' 504 Service Plans.
 - *Service Plans outline individual students' classroom accommodations.*
 - *Teachers are responsible for implementing the accommodations.*
- Students who have chronic medical conditions, are medically fragile, or have health related disabilities will have their individual situation assessed by the school nurse and appropriate educational team members. Individual Healthcare Plans (IHPs), Individual Education Plans (IEPs), 504 Plans and any other relevant documentation will be reviewed. Parents will be included as a relevant team member and will be collaboratively involved in team decision making. Input from the student's physician will be sought when needed.



- Should a student be unable to attend school due to a health condition, consideration will be given to all service delivery options including homebound instruction. The service delivery, time, and frequency will be reviewed and agreed upon collaboratively by the child's parent and educational team.

Social Services

- Social services will continue providing direct support to students and families. Partnerships with community agencies and organizations will be utilized as additional services are needed.
- Social workers will continue to process referrals from school staff and community partners and provide case management for individuals in need.
 - *School staff can make referrals to their [school counselor and social worker](#) in regard to student/family needs*
- The FPS Outback, the district's food pantry, will be available to serve families. Referrals will provide the social work team necessary information for weekly preparation.
- FPS families may be eligible for rental assistance. Social workers will be available to work with families to determine eligibility.
- The district [Families in Transition \(FIT\) Coordinator, Lisa Hughey](#), will work with school counselors, social workers, and families to identify students who meet the [McKinney Vento Homeless Assistance Act](#) criteria. This identification serves to reduce barriers as students strive to obtain academic achievement.

Gifted & Talented Education

- GT instruction and services will continue for all current GT students.
- Students will still be screened for gifted and talented placement regardless of the option they choose.



English Language Learners

- Language support will continue to be provided to English learners (ELs) for all learning options. This support will help ELs' meaningfully participate in content-area learning experiences.
- ELs will receive accommodations and modifications according to their proficiency level needs. These will be recorded and distributed, as always, by their LPAC.
- Parents/guardians may waive any ESL services, but students who are identified as ELs must complete annual language proficiency assessments.
- English language development (ELD) classes, taught by ESL teachers, will continue to be offered at students' proficiency levels in both traditional/ blended/hybrid and virtual settings.
- New students who indicate a language other than English on the Home Language Usage Survey will be screened in-person to determine if they should participate in ESL programming.
- Both oral and written communication will be provided to parents/guardians in languages other than English regardless of a student's EL status..
 - *If interpretation (oral) or translation (written) services are necessary, please contact the ESL office at 479-973-8692 or christen.graham@fayar.net.*

Professional Development

Certified Staff

All certified staff will participate in professional learning provided by their school.

The Office of Teaching and Learning will be available to provide additional support for all teachers.

Classified Staff

Classified Staff will receive two days of training that will focus on required trainings per their department and supporting students, teachers and families.

Parents & Guardians

Parent Resources are available on the [FPS and school websites](#).

Human Resources & Personnel

FPS teachers with concerns regarding their health and underlying conditions and COVID-19 should contact the FPS Human Resources Department (mybenefits@fayar.net) to discuss available options for their particular situation. District Leave Policies, FMLA, and [Policy 1.21](#) may apply to specific situations. District Leave Policy 4150 (Policy 4243 for classified staff) does have an option for an Extended Leave for one or two semesters. Please contact the HR Department at mybenefits@fayar.net if you would like any information regarding any of the types of leave mentioned above.

Substitute Teachers

FPS is working with ESS (substitute provider) to provide subs for each day this fall to teach in classrooms. When possible, these subs will work in the same building each day.

COVID-19 Protocols - Response to Positive Cases

When Someone is Sick

- Any individual who shows any signs or symptoms of illness should stay home.
- Students will not be penalized for missing school and are encouraged to stay home when they are not feeling well.
- Any student or employee who begins to exhibit a high fever associated with COVID-19 like symptoms should report immediately to the school nurse.

Positive Cases of COVID-19

- Any individual who tests positive for COVID-19 or who shows any signs or symptoms of illness should refer to the [CDC guidance for COVID-19](#)