



School Configuration Scenario Planning



November 2025

Agenda

- ☐ PowerSchool Predictive Enrollment Analytics and your consultant
- ☐ Current State and evaluative Criteria
- ☐ Realignment Option
- ☐ Associated Data Tables

Background and History - Predictive Enrollment Analytics

Zach Worthen

Solution Engineer, PowerSchool

Provided boundary and enrollment analysis and curricular services to school districts and financial and policy guidance to NGOs since 2012

- United Nations Development Programme
- New York City Department of Education
- Portland Public Schools

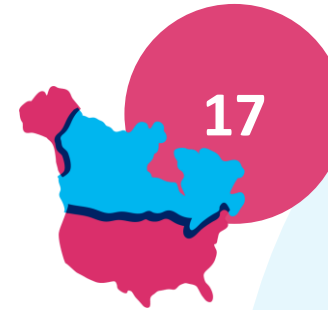
Current responsibilities for DI includes Boundary & Enrollment Analysis and Client Support



Compton Unified School District



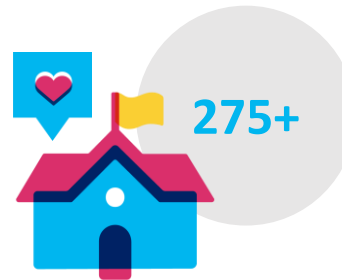
BAKERSFIELD CITY SCHOOL DISTRICT



Customers in
17 states

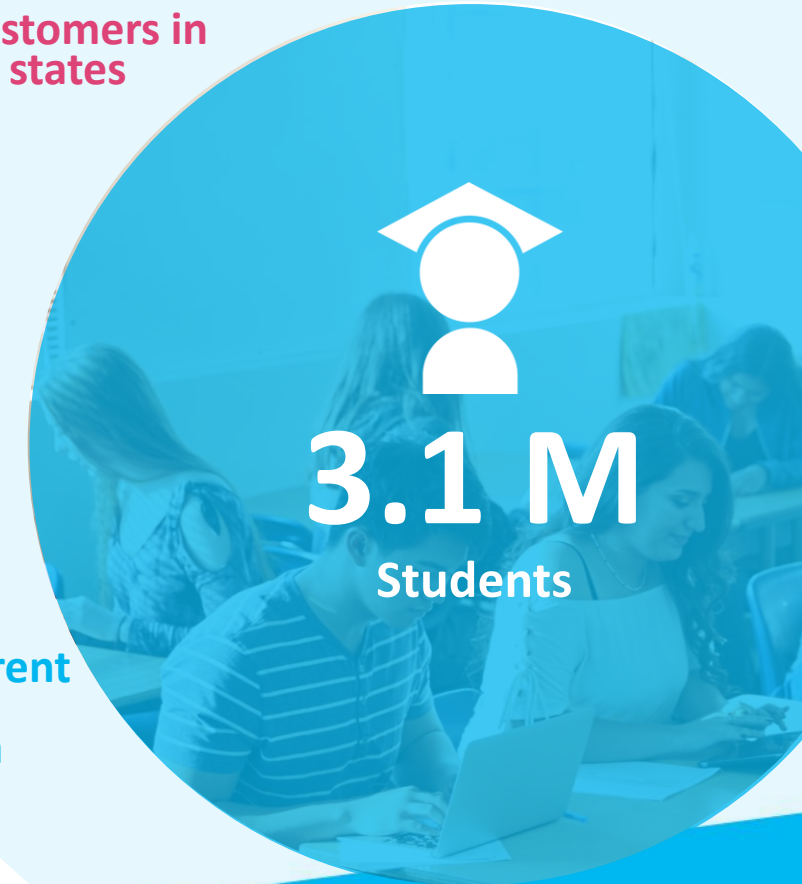


17 Years



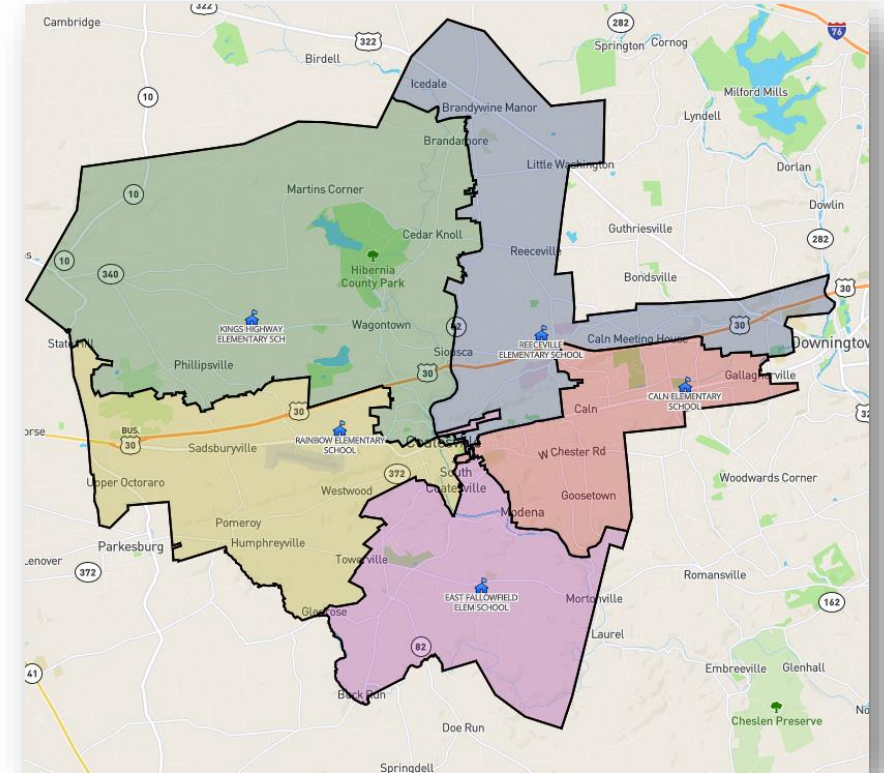
District
Partners

120+ Current
Clients in
California

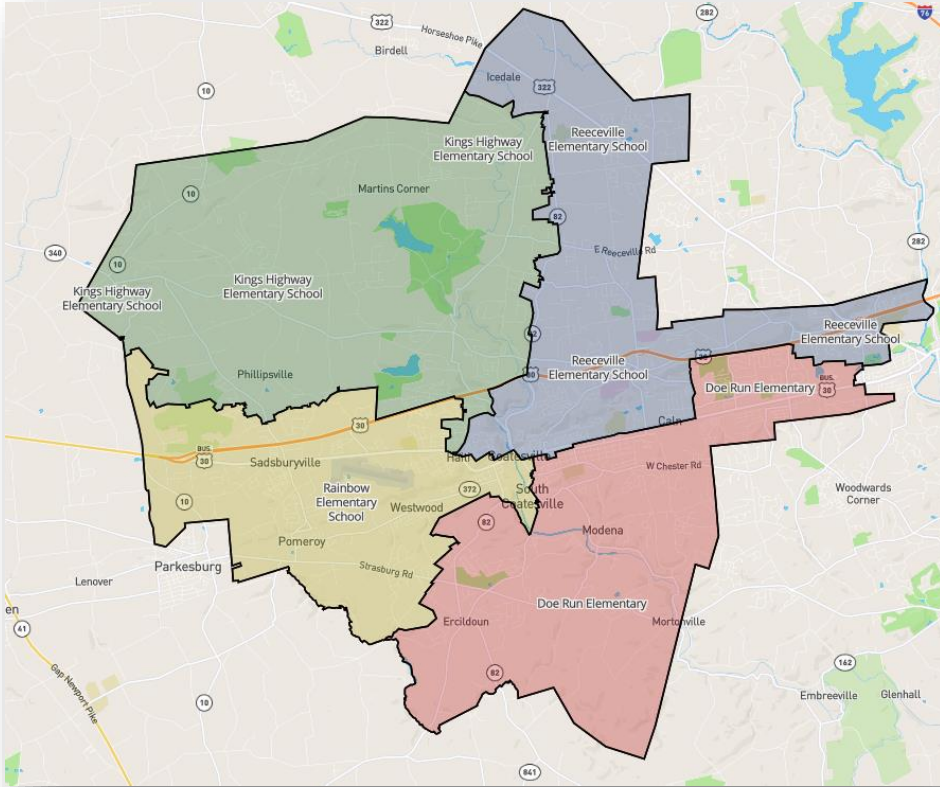


Informational: Current State

- The **25-26** Coatesville Area SD elementary boundaries are presented here. In addition, the current Middle boundaries comprise the entire district as each building houses grades 6-8
- CASD is closing the Caln and East Fallowfield buildings, and in the process of building Doe Run Elementary on the site of the former South Brandywine MS campus
- CASD is looking at creating 4 robust ES boundaries, 2 MS boundaries with aligned feeder patterns
- Among the driving forces behind this change will be the following:
 - Create Neighborhood schools, minimize bus transport
 - Balance neighborhood school attendance
 - Evaluate Ethnic and Socio-economic data for equity



Informational: Initial 2024 Proposal



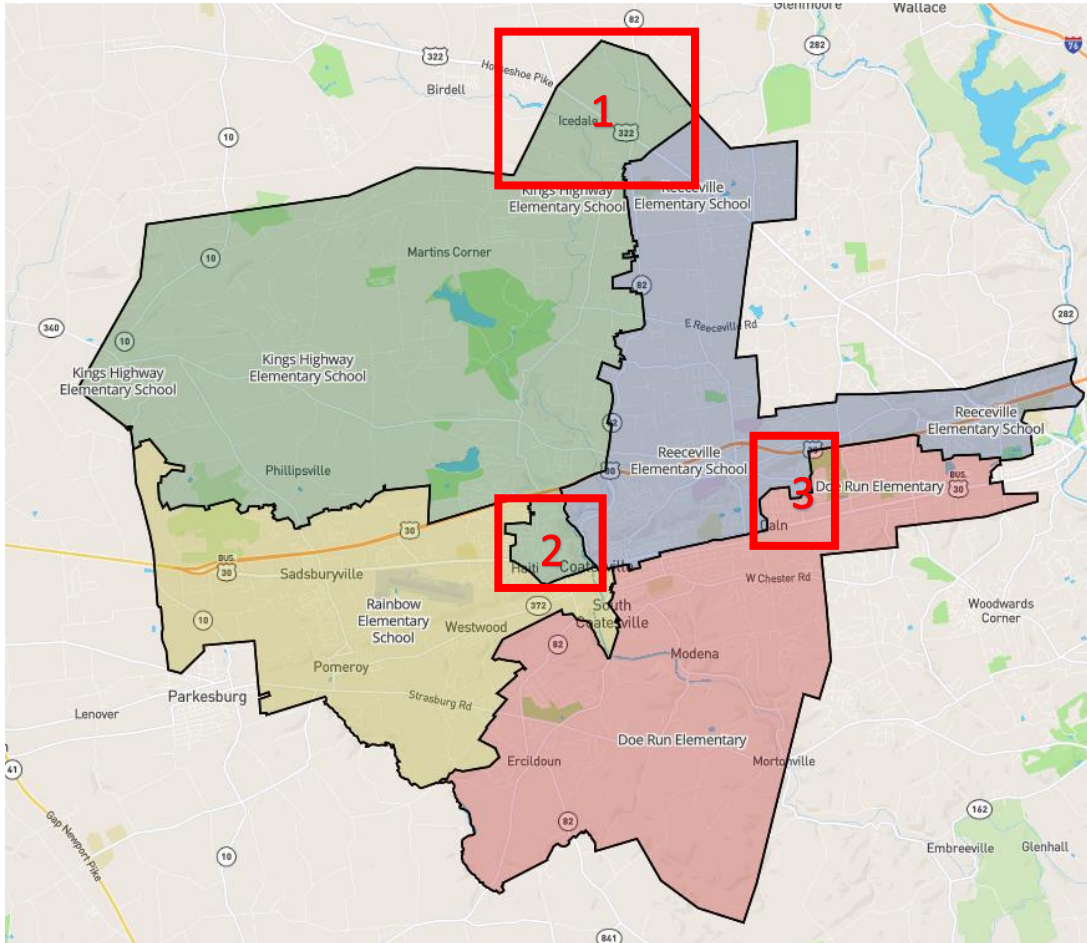
- In Spring of 2024, Coatesville conducted an initial proposal planning stage and looked at creating new boundaries for Kings Highway ES, Reeceville ES, Rainbow ES, and the now-named Doe Run ES
- Those tentative boundaries are presented here
- In the intervening 18 months, there have been several changes to the capacities of CASD buildings, most notably a future increase in the capacity of the Kings Highway building
- This additional space means that District Staff and PowerSchool consultants were able to identify a few critical zones for re-alignment that both better-balance the overall enrollment between the 4 schools, and allow CASD to ensure a more equitable racial and socio-economic balance

Informational: Best Practices in School Configuration and Grade Alignment

As CASD finalizes the realignment of Schools, we review the structure and inputs that guide the creation of newly aligned schools:


- Stable and viable enrollment for new and existing schools
- Meets educational needs of the student body and educational policies of Board and District Leadership
- Respects community boundaries and history

Proposed Elementary Map and Description



- The New Elementary map splits the district into four roughly even geographic areas.
- All 4 schools have an appropriate capacity utilization while also maintaining an ethnic and socio-economic balance
- Additionally, annexes and geographical anomalies have been cleaned up to facilitate transportation and neighborhood identity.
- While changes from the 2024 proposal are limited, they are focused around the 3 highlighted areas:
 1. Indian Run Village has been re-assigned to Kings Highway ES
 2. The area around Millview Park has been wholly assigned to Kings Highway ES – as opposed to split between KHES, Reeceville and Rainbow
 3. A community divided by Barley Sheaf Rd that had unique transportation and community alignment has been realigned will now attend Reeceville Elementary

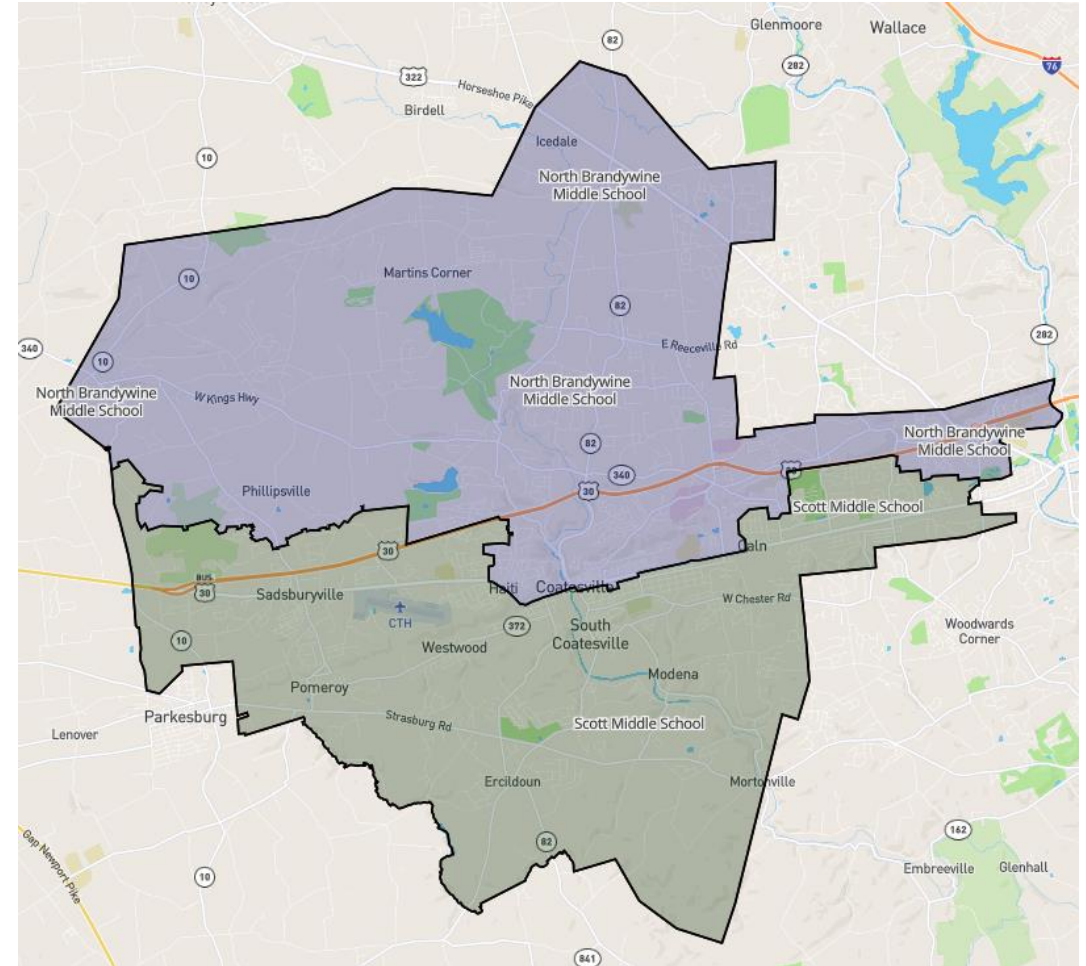
Proposed Elementary Map Data Tables

 Predictive Enrollment Analytics		Enrollment			Utilization			Racial %			Socio-Economic
School	Max Capacity	2026	2030	2034	2026	2030	2034	White	Black	Hispanic	Free and Reduced Y %
Kings Highway ES	547	454	483	475	83%	88%	87%	54%	24%	20%	60%
Rainbow ES	820	638	671	655	78%	82%	80%	44%	32%	22%	62%
Reeceville ES	658	503	508	500	76%	77%	76%	34%	36%	30%	71%
Doe Run ES	825	703	676	662	85%	82%	80%	37%	37%	25%	67%


Proposed Middle Map and Description

The New Middle map splits the district into 2 roughly equal geographic sections and aligns the Elementary -> Middle feeder patterns for intermediate students. All cohorts of Rainbow ES and Doe Run ES feed into Scott Middle, while Kings Highway ES and Reeceville ES feed into North Brandywine.

The only change from the 2024 map is in the section along Barley Sheaf that is swapped between Doe Run and Reeceville and a sliver of land north of Lincoln Highway that has been re-assigned from Rainbow to Kings and has moved from Scott to North Brandywine.



Proposed Middle Map Data Tables

		Enrollment			Utilization			Racial %			
School	Max Capacity	2026	2030	2034	2026	2030	2034	White	Black	Hispanic	Free and Reduced Y %
Scott MS	758	653	674	646	86%	89%	85%	44%	31%	24%	54%
North Brandywine MS	690	455	415	449	66%	60%	65%	42%	35%	21%	62%

Q & A