



RIVERSIDE SCHOOL DISTRICT 96 IMPROVEMENTS 2020



Construction Progress - August 2020

This newsletter seeks to update Village residents with regards to renovations currently underway at Ames Elementary School and Central Elementary School. Blythe Park and Hollywood Elementary Schools to begin improvements during the summer of 2020.

Project Scope

Ames Elementary School (February 1-August 14, 2020)

- 2-Storey Addition (~15,000SF) to the Existing Building
- Multipurpose Room, Classrooms, Library, Learning Hub, Toilets
- Elevator for improved Internal Access
- Site Improvements including Improved Parking, Playgrounds, Storm Drainage
- Improve School Drop Off

Central Elementary School (March 1-August 14, 2020)

- New Elevator Access to all floors
- Ramp Accessibility to Main Entry
- Reconfiguration of select areas in the lower level as Multipurpose Rooms
- Select interior ramps between levels

Blythe Park Elementary School (June 1-August 14, 2020)

- New Secure Entrance
- Additional Classroom
- Maintain Historical Significance

Hollywood Elementary School (June 1-August 14, 2020)

- Remodeling of select interiors including the Office
- New Secure Entrance

Project Team

Owner: Riverside School District 96
 Architect: DLA Architects, LLC.
 Contractor Manager: Berglund Construction Co.
 Owner's Representative: Vistara Construction Services, Inc

Project Schedule

Ames -	Building Interior by 8/14 Casework by 8/24 Furniture by 8/22 Building Inspections by 8/24 Playground by 8/24 Sitework by 8/24
Central -	Building Interior by 8/14 Casework by 8/24 Furniture by 8/17 Building Inspections by 8/24
Blythe Park -	Building Interior by 8/14 Casework by 8/15 Furniture by 8/15 Building Inspections by 8/24
Hollywood -	Building Interior by 8/14 Casework by 8/15 Furniture by 8/15 Building Inspections by 8/24



Contact Persons

Superintendent of Schools: Martha Ryan-Toye 708-447-5007
 Director of Finance: James Fitton 708-447-5007
 Building Engineer: Bill Radtke 708-447-7044
 Owner's Representative: Ramesh Nair 312-404-9530



RIVERSIDE SCHOOL DISTRICT 96 IMPROVEMENTS 2020



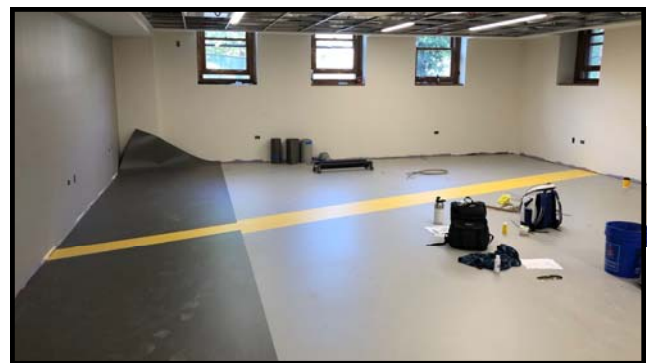
Construction Progress - August 2020



Ames Elementary School



Blythe Park Elementary School



Hollywood Elementary School

Central Elementary School