

mySpringISD

Username

Password

Sign In



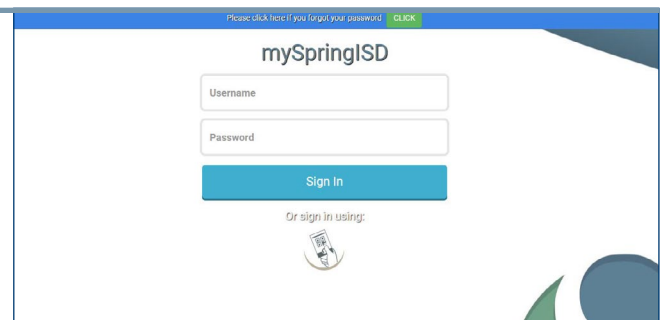
Access All of Your Digital Resources and Applications Under the All New MySpringISD Portal

MySpringISD single sign-on gives parents, students and staff instant access to all their online resources from any device and any location. Parents and educators no longer have to worry whether or not their students can access everything they need to continue learning from home.

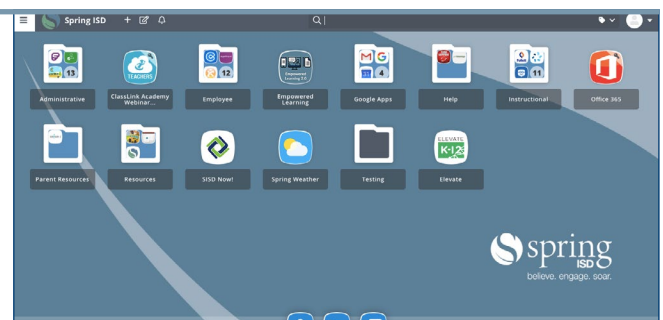
- Simply log on to my.springisd.org, and sign in by using your current Spring ISD network login username and password.

If you forgot your log-in/username, please contact the Help Desk at 281-891-6337. Service Desk hours are Monday through Friday 8 a.m. - 4 p.m.

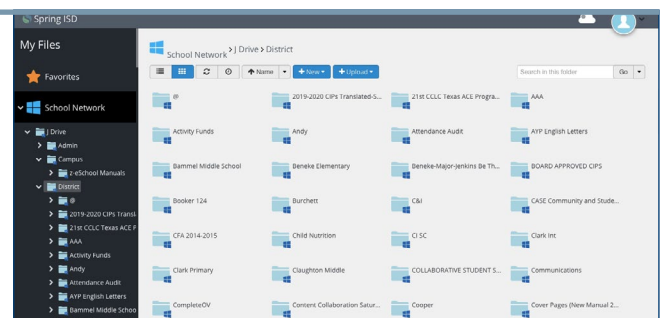
****Students may also reach out to one of their teachers to reset their login**



- The new portal features a cleaner, more modern look and allows users to customize their folders and icons.



- Students, parents, teachers and Spring ISD staff can easily access school network files from anywhere, including Google Drive.



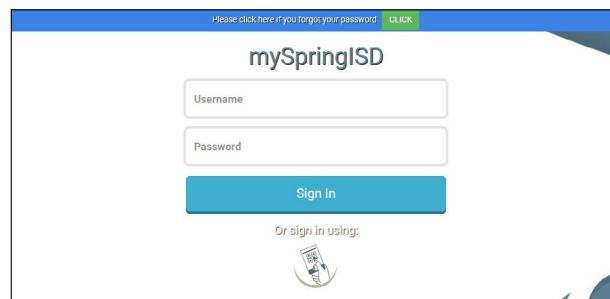


mySpringISD QUICK GUIDE

my.springisd.org

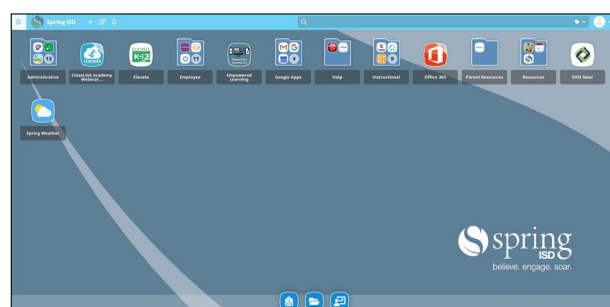
1 Sign In

Your **login page** is a custom page specific to Spring ISD. Sign in by using your network login username and password.



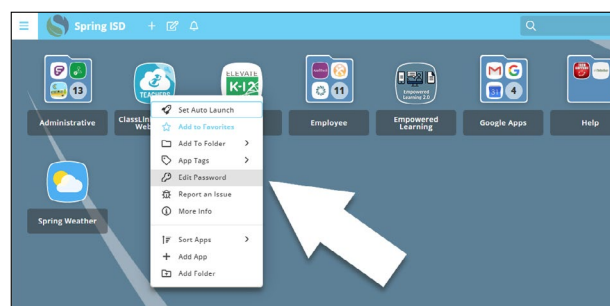
2 My Apps

The **My Apps** screen is where all of your online resources will be located. If required, enter your username and password once and myspringisd will remember it for you!



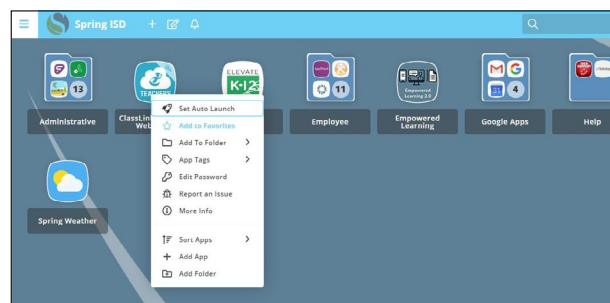
3 Edit Password

Users have the option to go under 'Settings' and edit their passwords or enable a single sign-on.



4 App Options

Right-click on an application to access its menu options in order to add it to the Favorites Bar, to a folder, to add tags, or to report issues the app may be having.



5 Edit Mode

To go into **Edit Mode**, click the paper and pencil symbol on the top left of your screen. While in Edit Mode, you can create folders and customize your My Apps screen.

