

LEA Name : Upper Moreland Township SD
Address : 2900 Terwood Rd
Willow Grove , PA 19090

County : Montgomery
AUN Number : 123468503
LEA Type : SD

Annual Financial Report Accuracy Certification Statement

For Fiscal Year Ending
6/30/2022

Pennsylvania Department of Education
&
Office of Comptroller Operations

PDE-2056: Intermediate Unit
PDE-2057: School District, AVTS/CTC, Charter School,
and Special Program Jointure

CERTIFICATION: By signing this page I agree that the electronic data submitted is a complete and accurate statement of the financial operations and status of the local education agency for the fiscal year. It has been prepared in accordance with generally accepted accounting principles and established Commonwealth of PA reporting guidelines.

Chief School Administrator Signature

Date

Board Secretary Signature

Date

William R Hyatt

Contact Person

whyatt@umtsd.org

Contact Person E-mail Address

(215)830-1521 Ext :1521

Contact Person Telephone Number

Contact Person Fax Number

Audit Certification
Annual Financial Report:
For Fiscal Year Ending **6/30/2022**
(Pursuant to PA School Code Section 218(b))

LEA Name : Upper Moreland Township SD
AUN Number : 123468503
County : Montgomery

Audit Certification Due: 12/31/2022

This certification is applicable to the Annual Financial Report data submitted through the Consolidated Financial Reporting System (CFRS).

CERTIFICATION: By signing this page I agree that the financial statements of the school have been properly audited as noted above pursuant to Article XXIV, and in the auditor's professional opinion, the Annual Financial Report (PDE-2057) submitted through CFRS is materially consistent with the audited financial statements.

Chief School Administrator

Board Secretary

Signature

Date

Signature

Date

William R Hyatt

Contact Person

whyatt@umtsd.org

Contact Person E-mail Address

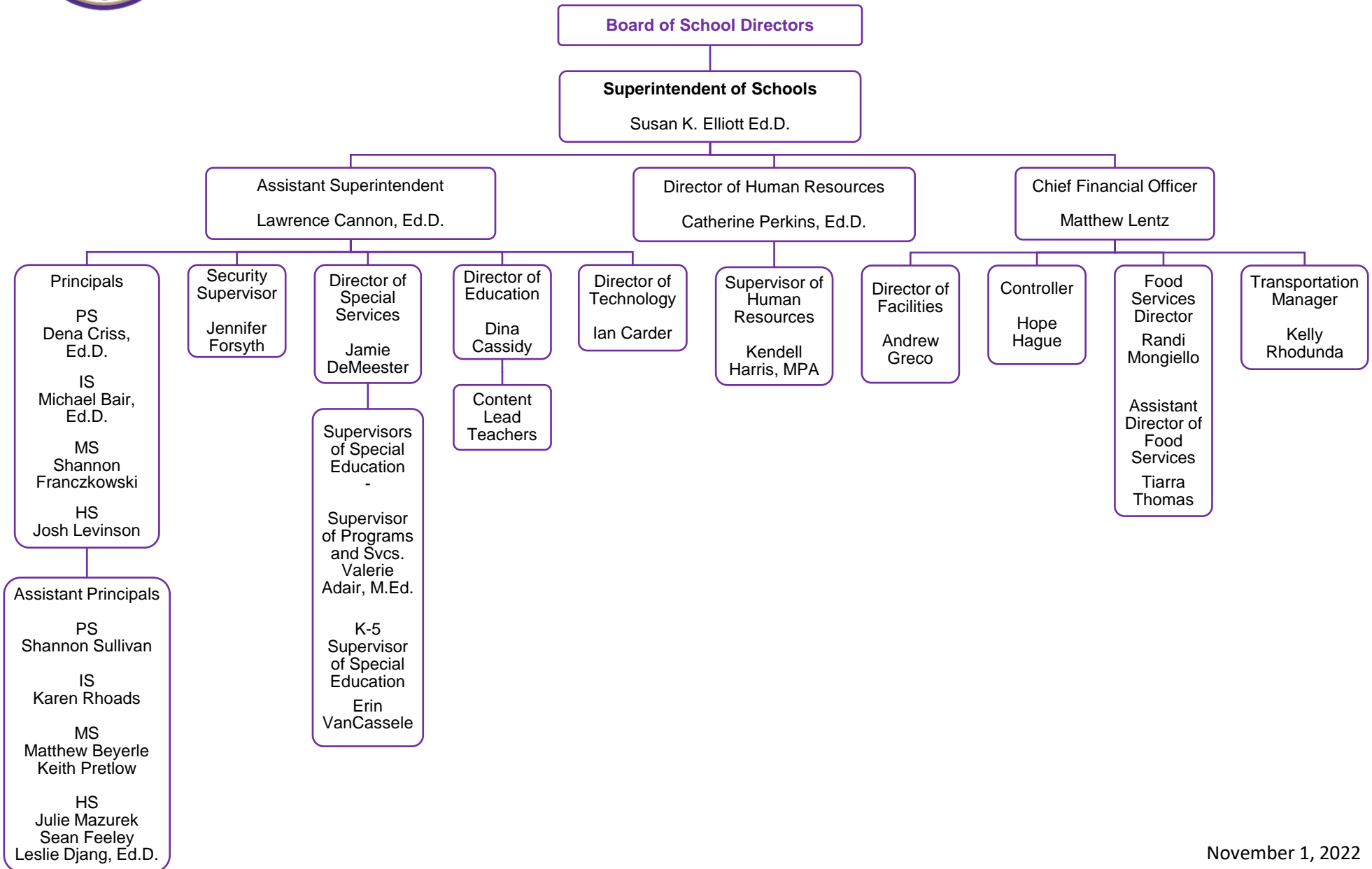
(215)830-1521 Ext :1521

Contact Person Telephone Number

Contact Person Fax Number



Upper Moreland Township School District Leadership Organizational Chart 2022-2023



November 1, 2022

SCHOOL DISTRICT OF UPPER MORELAND TOWNSHIP

NOTES TO THE BASIC FINANCIAL STATEMENTS

JUNE 30, 2022

NOTE A - SUMMARY OF SIGNIFICANT ACCOUNTING POLICIES (Continued)

The School District has adopted GASB Statements No. 31, Accounting and Financial Reporting for Certain Investments and for External Investment Pools, No. 72, Fair Value Measurement and Application and No. 79 Certain External Investment Pools and Pool Participants. In accordance with these Statements, investments in marketable securities with readily determinable fair value and all investments in debt securities are reported at their fair values. Investments in qualifying external investment pools are reported at amortized cost basis.

Short-Term Interfund Receivables/Payables

During the course of operations, transactions may occur between individual funds for goods provided or services rendered. These receivables and payables are classified as "due from other funds" or "due to other funds" on the Governmental Funds balance sheet. Short-term interfund loans are classified as "interfund receivables/payables." These amounts are eliminated in the statement of net position, except for amounts due between governmental and business-type activities, which, when present, are shown as internal balances.

Inventories and Prepaid Items

Inventory of purchased food and paper supplies within the Proprietary Funds is carried at cost using the first-in, first-out method of accounting and is subsequently charged to expense when consumed. Inventory of donated food is valued at fair market value as established by the U.S. Department of Agriculture.

Inventories of Governmental Funds are valued at cost using the first-in, first-out method. The cost of such inventories is recorded as expenditures/expenses when consumed rather than when purchased.

Certain payments to vendors reflect costs applicable to future accounting periods and are recorded as prepaid items in both the government-wide and fund financial statements. The cost of prepaid items is recorded as expenditures/expenses when consumed rather than when purchased.

Capital Assets and Depreciation

Capital assets, which include property, plant, equipment and construction in progress, are reported in the applicable governmental or business-type activities columns in the government-wide financial statements. The School District defines a capital asset as an asset with an initial, individual cost equal to or greater than \$5,000 or purchased with debt proceeds and must also have an estimated useful life in excess of one year. Capital assets are recorded at historical cost or estimated historical cost if purchased or constructed. Donated capital assets, donated works of art and similar items, and capital assets received in a service concession arrangement are reported at acquisition value.

The costs of normal maintenance and repairs that do not add to the value of the asset or materially extend asset lives are not capitalized.

NOTE A - SUMMARY OF SIGNIFICANT ACCOUNTING POLICIES (Continued)

Property, plant and equipment of the School District are depreciated using the straight-line method over the following estimated useful lives:

	Years
Site improvements, buildings and building improvements	15-40
Furniture and equipment	5-15
Vehicles	8

Long-Term Obligations

In the government-wide financial statements and Proprietary Fund Types in the fund financial statements, long-term debt and other long-term obligations are reported as liabilities in the applicable governmental activities, business-type activities, or Proprietary Fund Type statement of net position. Bond premiums and discounts are deferred and amortized over the life of the bonds. Bonds payable are reported net of the applicable bond premium or discount. Bond issuance costs are expensed in the year incurred.

In the fund financial statements, Governmental Funds recognize bond premiums and discounts, as well as bond issuance costs, during the current period. The face amount of debt issued is reported as other financing sources. Premiums received on debt issuances are reported as other financing sources while discounts on debt issuances are reported as other financing uses. Issuance costs, whether or not withheld from the actual debt proceeds received, are reported as debt service expenditures.

Compensated Absences

Full-time School District employees (excluding teachers) earn vacation up to a maximum of 20 days based on job classifications and length of service. Unused vacation pay is due upon termination. School District employees accumulate sick time in accordance with their applicable contracts. Compensated absences are reported as accrued in the government-wide financial statements. Governmental Funds report only matured compensated absences payable to currently terminated employees and are included in accrued salaries and benefits.

Net Position

Net position represents the difference between assets, deferred outflows of resources, liabilities, and deferred inflows of resources. Net investment in capital assets consists of capital assets, net of accumulated depreciation, reduced by the outstanding balance of any borrowing used for the acquisition, construction, or improvement of those assets. Net position is reported as restricted when there are limitations imposed on its use either through the enabling legislation adopted by the School District or through external restrictions imposed by creditors, grantors, or laws or regulations of other governments.

<u>Val Number</u>	<u>Description</u>	<u>Justification</u>
30685	Revenue Detail: Current Tax Revenue amount cannot exceed 50% variance from prior year amount. Correct the data or enter a justification. 6153, Current AFR Rev Detail: \$1,149,155.29 6153, Prior AFR Rev Detail: \$742,363.14	There was in increase in the number and value of homes sold within the district in FY22 compared to FY21
42420	Expenditure Detail: Total current year 2700-513 expenditure varies from prior year by 10%. Correct the data or enter a justification. 2700-513, AFR Exp Detail: \$9,829.14 2700-513, PY AFR Amount: \$97,644.75	Transportation provided by Suburban Transit in FY22 were contracted through the MCIU and costs were deducted from our subsidy. In FY21 Suburban Transit services were procured by the district.

LEA : 123468503 Upper Moreland Township SD

Printed 12/14/2022 4:45:00 PM

Amounts Expressed in Whole Dollars		<u>General Fund</u> <u>(10)</u>	<u>Student Sponsored</u> <u>Activity Fund</u> <u>(21)</u>	<u>Public Purpose Trust</u> <u>(27)</u>	<u>Other Compt Approved</u> <u>(28)</u>	<u>Athletic / Activity</u> <u>(29)</u>
Assets And Deferred Outflows Of Resources						
Assets						
0100	Cash and Cash Equivalents	18,887,832				
0110	Investments	565,284				
0120	Taxes Receivable	713,081				
0130	Due From Other Funds					
0141	Due From Other Governments					
0142	State Revenue Receivable	2,101,483				
0143	Federal Revenue Receivable	180,014				
0145	Other Intergovernmental Revenue Receivable					
0146	Due from Primary Government					
0147	Due from Component Unit					
0150	Other Receivables	20,434				
0170	Inventories	37,266				
0180	Prepaid Expenses (Expenditures)	59,670				
0190	Other Current Assets					
Total Assets		\$22,565,064				
0910	Deferred Outflows of Resources					
Total Assets And Deferred Outflows Of Resources		\$22,565,064				

LEA : 123468503 Upper Moreland Township SD

Printed 12/14/2022 4:45:00 PM

Amounts Expressed in Whole Dollars		<u>Capital Reserve (690.</u> <u>1850)</u> <u>(31)</u>	<u>Capital Reserve (1431)</u> <u>(32)</u>	<u>Other Capital Projects</u> <u>Fund</u> <u>(39)</u>	<u>Debt Service</u> <u>(40)</u>	<u>Permanent</u> <u>(90)</u>
Assets And Deferred Outflows Of Resources						
Assets						
0100	Cash and Cash Equivalents					
0110	Investments		6,738,789		4,191,745	
0120	Taxes Receivable					
0130	Due From Other Funds		1,164,553		2,841,000	
0141	Due From Other Governments					
0142	State Revenue Receivable					
0143	Federal Revenue Receivable					
0145	Other Intergovernmental Revenue Receivable					
0146	Due from Primary Government					
0147	Due from Component Unit					
0150	Other Receivables					
0170	Inventories					
0180	Prepaid Expenses (Expenditures)					
0190	Other Current Assets					
Total Assets			\$7,903,342		\$7,032,745	
0910	Deferred Outflows of Resources					
Total Assets And Deferred Outflows Of Resources			\$7,903,342		\$7,032,745	

LEA : 123468503 Upper Moreland Township SD

Printed 12/14/2022 4:45:00 PM

Amounts Expressed in Whole Dollars		<u>Total Governmental</u>
		<u>Funds</u>
Assets And Deferred Outflows Of Resources		
Assets		
0100 Cash and Cash Equivalents	18,887,832	
0110 Investments	11,495,818	
0120 Taxes Receivable	713,081	
0130 Due From Other Funds	4,005,553	
0141 Due From Other Governments		
0142 State Revenue Receivable	2,101,483	
0143 Federal Revenue Receivable	180,014	
0145 Other Intergovernmental Revenue Receivable		
0146 Due from Primary Government		
0147 Due from Component Unit		
0150 Other Receivables	20,434	
0170 Inventories	37,266	
0180 Prepaid Expenses (Expenditures)	59,670	
0190 Other Current Assets		
Total Assets	\$37,501,151	
0910 Deferred Outflows of Resources		
Total Assets And Deferred Outflows Of Resources	\$37,501,151	

LEA : 123468503 Upper Moreland Township SD

Printed 12/14/2022 4:45:00 PM

Amounts Expressed in Whole Dollars		<u>General Fund</u> <u>(10)</u>	<u>Student Sponsored</u> <u>Activity Fund</u> <u>(21)</u>	<u>Public Purpose Trust</u> <u>(27)</u>	<u>Other Compt Approved</u> <u>(28)</u>	<u>Athletic / Activity</u> <u>(29)</u>
Liabilities And Deferred Inflows Of Resources And Fund Balances						
Liabilities						
0400	Due to Other Funds	3,442,441				
0411	Due to Other Governments					
0412	Due to Primary Government					
0413	Due to Component Unit					
0420	Accounts Payable	925,217				
0430	Contracts Payable					
0440	Current Portion of Long-Term Debt					
0450	Short-Term Payables					
0461	Accrued Salaries and Benefits	1,972,378				
0462	Payroll Deductions and Withholding	6,654,325				
0480	Unearned Revenues	733,676				
0490	Other Current Liabilities					
Total Liabilities		\$13,728,037				
0950	Deferred Inflows of Resources	595,501				
Fund Balances						
0810	Nonspendable Fund Balance	96,936				
0820	Restricted Fund Balance					
0830	Committed Fund Balance	2,200,000				
0840	Assigned Fund Balance	900,000				
0850	Unassigned Fund Balance	5,044,590				
Total Fund Balances		\$8,241,526				
Total Liabilities, Deferred Inflows Of Resources And Fund Balances		\$22,565,064				

LEA : 123468503 Upper Moreland Township SD

Printed 12/14/2022 4:45:00 PM

Amounts Expressed in Whole Dollars		<u>Capital Reserve (690.</u> <u>1850)</u> <u>(31)</u>	<u>Capital Reserve (1431)</u> <u>(32)</u>	<u>Other Capital Projects</u> <u>Fund</u> <u>(39)</u>	<u>Debt Service</u> <u>(40)</u>	<u>Permanent</u> <u>(90)</u>
Liabilities And Deferred Inflows Of Resources And Fund Balances						
Liabilities						
0400	Due to Other Funds				415,768	
0411	Due to Other Governments					
0412	Due to Primary Government					
0413	Due to Component Unit					
0420	Accounts Payable		56,188			
0430	Contracts Payable					
0440	Current Portion of Long-Term Debt					
0450	Short-Term Payables					
0461	Accrued Salaries and Benefits					
0462	Payroll Deductions and Withholding					
0480	Unearned Revenues					
0490	Other Current Liabilities					
Total Liabilities			\$56,188		\$415,768	
0950	Deferred Inflows of Resources					
Fund Balances						
0810	Nonspendable Fund Balance					
0820	Restricted Fund Balance		7,847,154			
0830	Committed Fund Balance					
0840	Assigned Fund Balance				6,616,977	
0850	Unassigned Fund Balance					
Total Fund Balances			\$7,847,154		\$6,616,977	
Total Liabilities, Deferred Inflows Of Resources And Fund Balances			\$7,903,342		\$7,032,745	

LEA : 123468503 Upper Moreland Township SD

Printed 12/14/2022 4:45:00 PM

Amounts Expressed in Whole Dollars		<u>Total Governmental</u> <u>Funds</u>
Liabilities And Deferred Inflows Of Resources And Fund Balances		
Liabilities		
0400 Due to Other Funds		3,858,209
0411 Due to Other Governments		
0412 Due to Primary Government		
0413 Due to Component Unit		
0420 Accounts Payable		981,405
0430 Contracts Payable		
0440 Current Portion of Long-Term Debt		
0450 Short-Term Payables		
0461 Accrued Salaries and Benefits		1,972,378
0462 Payroll Deductions and Withholding		6,654,325
0480 Unearned Revenues		733,676
0490 Other Current Liabilities		
Total Liabilities		\$14,199,993
0950 Deferred Inflows of Resources		595,501
Fund Balances		
0810 Nonspendable Fund Balance		96,936
0820 Restricted Fund Balance		7,847,154
0830 Committed Fund Balance		2,200,000
0840 Assigned Fund Balance		7,516,977
0850 Unassigned Fund Balance		5,044,590
Total Fund Balances		\$22,705,657
Total Liabilities, Deferred Inflows Of Resources And Fund Balances		\$37,501,151

Amounts Expressed in Whole Dollars	<u>General Fund</u> <u>(10)</u>	<u>Student Sponsored</u> <u>Activity Fund</u> <u>(21)</u>	<u>Public Purpose Trust</u> <u>(27)</u>	<u>Other Compt Approved</u> <u>(28)</u>	<u>Athletic / Activity</u> <u>(29)</u>
Revenues					
6000 Revenue from Local Sources	56,956,118				
7000 Revenue from State Sources	14,191,051				
8000 Revenue from Federal Sources	2,180,227				
Total Revenues	\$73,327,396				
Expenditures					
1000 Instruction	40,319,700				
2000 Support Services	20,204,884				
3000 Operation of Non-Instructional Services	782,791				
4000 Facilities Acquisition, Construction and Improvement Services	109,860				
5110 Debt Service					
5130 Refund of Prior Year Revenues / Receipts	1,604				
5140 Leases					
Total Expenditures	\$61,418,839				
Excess (Deficiency) Of Revenues Over Expenditures	\$11,908,557				
Other Financing Sources (Uses)					
9110 Face Value of Bonds Issued					
9120 Proceeds from Refunding of Bonds					
9130 Bond Premiums					
9200 Proceeds from Extended-Term Financing and Leases					
9300 Interfund Transfers - IN	111,693				
9400 Sale of or Compensation for Loss of Fixed Assets					
9710 Transfers from Component Units					
9720 Transfers from Primary Governments					
9910 Other Financing Sources Not Listed in the 9000 Series					
9990 Insurance Recoveries					
5120 Debt Service – Refunded Bonds					
5150 Bond Discounts					
5200 Interfund Transfers – Out	11,339,390				
5300 Transfers Out to Component Units/Primary Governments					
Total Other Financing Sources (Uses)	(\$11,227,697)				

LEA : 123468503 Upper Moreland Township SD

Printed 12/14/2022 4:45:06 PM

Amounts Expressed in Whole Dollars		<u>Capital Reserve (690.1850)</u> <u>(31)</u>	<u>Capital Reserve (1431)</u> <u>(32)</u>	<u>Other Capital Projects</u> <u>Fund</u> <u>(39)</u>	<u>Debt Service</u> <u>(40)</u>	<u>Permanent</u> <u>(90)</u>
Revenues						
6000	Revenue from Local Sources		14,759		14,792	
7000	Revenue from State Sources					
8000	Revenue from Federal Sources					
Total Revenues			\$14,759		\$14,792	
Expenditures						
1000	Instruction					
2000	Support Services		701,069			
3000	Operation of Non-Instructional Services					
4000	Facilities Acquisition, Construction and Improvement Services		55,096			
5110	Debt Service				7,129,051	
5130	Refund of Prior Year Revenues / Receipts					
5140	Leases					
Total Expenditures			\$756,165		\$7,129,051	
Excess (Deficiency) Of Revenues Over Expenditures			(\$741,406)		(\$7,114,259)	
Other Financing Sources (Uses)						
9110	Face Value of Bonds Issued					
9120	Proceeds from Refunding of Bonds					
9130	Bond Premiums					
9200	Proceeds from Extended-Term Financing and Leases					
9300	Interfund Transfers - IN		4,211,119		7,128,271	
9400	Sale of or Compensation for Loss of Fixed Assets					
9710	Transfers from Component Units					
9720	Transfers from Primary Governments					
9910	Other Financing Sources Not Listed in the 9000 Series					
9990	Insurance Recoveries					
5120	Debt Service – Refunded Bonds					
5150	Bond Discounts					
5200	Interfund Transfers – Out					
5300	Transfers Out to Component Units/Primary Governments					
Total Other Financing Sources (Uses)			\$4,211,119		\$7,128,271	

Amounts Expressed in Whole Dollars		<u>Total Governmental Funds</u>
Revenues		
6000	Revenue from Local Sources	56,985,669
7000	Revenue from State Sources	14,191,051
8000	Revenue from Federal Sources	2,180,227
Total Revenues		\$73,356,947
Expenditures		
1000	Instruction	40,319,700
2000	Support Services	20,905,953
3000	Operation of Non-Instructional Services	782,791
4000	Facilities Acquisition, Construction and Improvement Services	164,956
5110	Debt Service	7,129,051
5130	Refund of Prior Year Revenues / Receipts	1,604
5140	Leases	
Total Expenditures		\$69,304,055
Excess (Deficiency) Of Revenues Over Expenditures		\$4,052,892
Other Financing Sources (Uses)		
9110	Face Value of Bonds Issued	
9120	Proceeds from Refunding of Bonds	
9130	Bond Premiums	
9200	Proceeds from Extended-Term Financing and Leases	
9300	Interfund Transfers - IN	11,451,083
9400	Sale of or Compensation for Loss of Fixed Assets	
9710	Transfers from Component Units	
9720	Transfers from Primary Governments	
9910	Other Financing Sources Not Listed in the 9000 Series	
9990	Insurance Recoveries	
5120	Debt Service – Refunded Bonds	
5150	Bond Discounts	
5200	Interfund Transfers – Out	11,339,390
5300	Transfers Out to Component Units/Primary Governments	
Total Other Financing Sources (Uses)		\$111,693

Amounts Expressed in Whole Dollars		<u>General Fund</u> <u>(10)</u>	<u>Student Sponsored</u> <u>Activity Fund</u> <u>(21)</u>	<u>Public Purpose Trust</u> <u>(27)</u>	<u>Other Compt Approved</u> <u>(28)</u>	<u>Athletic / Activity</u> <u>(29)</u>
Special And Extraordinary Items						
9920	Special Items – Gains					
9930	Extraordinary Items – Gains					
5520	Special Items – Losses					
5530	Extraordinary Items – Losses					
Net Change In Fund Balances		\$680,860				
Fund Balance						
0001	Fund Balance - Beginning of Fiscal Year	7,560,665				
Fund Balance - End Of Year		\$8,241,525				

Amounts Expressed in Whole Dollars		<u>Capital Reserve (690.</u> <u>1850)</u> <u>(31)</u>	<u>Capital Reserve (1431)</u> <u>(32)</u>	<u>Other Capital Projects</u> <u>Fund</u> <u>(39)</u>	<u>Debt Service</u> <u>(40)</u>	<u>Permanent</u> <u>(90)</u>
Special And Extraordinary Items						
9920	Special Items – Gains					
9930	Extraordinary Items – Gains					
5520	Special Items – Losses					
5530	Extraordinary Items – Losses					
Net Change In Fund Balances			\$3,469,713		\$14,012	
Fund Balance						
0001	Fund Balance - Beginning of Fiscal Year		4,377,441		6,602,966	
Fund Balance - End Of Year			\$7,847,154		\$6,616,978	

Amounts Expressed in Whole Dollars		<u>Total Governmental</u> <u>Funds</u>
Special And Extraordinary Items		
9920	Special Items – Gains	
9930	Extraordinary Items – Gains	
5520	Special Items – Losses	
5530	Extraordinary Items – Losses	
Net Change In Fund Balances		\$4,164,585
Fund Balance		
0001	Fund Balance - Beginning of Fiscal Year	18,541,072
Fund Balance - End Of Year		\$22,705,657

LEA : 123468503 Upper Moreland Township SD

Printed 12/14/2022 4:45:07 PM

Amounts Expressed in Whole Dollars		<u>Food Service</u> <u>(51)</u>	<u>Child Care</u> <u>Operations</u> <u>(52)</u>	<u>Other Enterprise</u> <u>(58)</u>	<u>TOTAL</u>	<u>Internal Service</u> <u>(60)</u>
Assets And Deferred Outflows Of Resources						
Current Assets						
0100	Cash and Cash Equivalents	2,433,588			2,433,588	
0110	Investments					
0130	Due From Other Funds					1,034,079
0141	Due From Other Governments					
0142	State Revenue Receivable	1,604			1,604	
0143	Federal Revenue Receivable	55,252			55,252	
0146	Due from Primary Government					
0147	Due from Component Unit					
0150	Other Receivables					
0170	Inventories	21,539			21,539	
0180	Prepaid Expenses (Expenditures)	1,043			1,043	
0190	Other Current Assets					
Total Current Assets		\$2,513,026			\$2,513,026	\$1,034,079
Noncurrent Assets						
0211	Land					
0212	Site Improvements (Net)					
0220	Buildings and Building Improvements (Net)					
0230	Machinery, Equipment and Furniture (Net)	307,360			307,360	
0250	Construction in Progress					
0260	Long Term Prepayments					
0290	Other Noncurrent Assets					
Total Noncurrent Assets		\$307,360			\$307,360	
0910	Deferred Outflows of Resources	223,000			223,000	
Total Assets And Deferred Outflows Of Resources		\$3,043,386			\$3,043,386	\$1,034,079

LEA : 123468503 Upper Moreland Township SD

Printed 12/14/2022 4:45:07 PM

Amounts Expressed in Whole Dollars	<u>Food Service</u> <u>(51)</u>	<u>Child Care</u> <u>Operations</u> <u>(52)</u>	<u>Other Enterprise</u> <u>(58)</u>	<u>TOTAL</u>	<u>Internal Service</u> <u>(60)</u>
Liabilities And Deferred Inflows Of Resources And Net Position					
Current Liabilities					
0400 Due to Other Funds	1,181,422			1,181,422	
0411 Due to Other Governments					
0413 Due to Component Unit					
0420 Accounts Payable	2,784			2,784	
0430 Contracts Payable					
0440 Current Portion of Long-Term Debt					
0450 Short-Term Payables					
0461 Accrued Salaries and Benefits	19,234			19,234	
0462 Payroll Deductions and Withholding	1,539			1,539	
0480 Unearned Revenues	71,232			71,232	
0490 Other Current Liabilities					
Total Current Liabilities	\$1,276,211			\$1,276,211	
Noncurrent Liabilities					
0510 Bonds Payable					
0520 Extended-Term Financing Agreements Payable					
0530 Lease Obligations					
0540 Accumulated Compensated Absences					
0550 Authority Lease Obligations					
0560 Other Post-Employment Benefits (OPEB)	67,000			67,000	
0570 Net Pension Liability	1,145,000			1,145,000	
0599 Other Noncurrent Liabilities					
Total Noncurrent Liabilities	\$1,212,000			\$1,212,000	
Total Liabilities	\$2,488,211			\$2,488,211	
0950 Deferred Inflows of Resources	357,000			357,000	
Net Position					
0791 Net Investment in Capital Assets	307,360			307,360	
0008 Restricted Net Position (0792 – 0798)					
0799 Unrestricted Net Position	(109,185)			(109,185)	1,034,079
Total Net Position	\$198,175			\$198,175	\$1,034,079
Total Liabilities And Deferred Inflows Of Resources And Net Position	\$3,043,386			\$3,043,386	\$1,034,079

Amounts Expressed in Whole Dollars	<u>Food Service</u> <u>(51)</u>	<u>Child Care Operations</u> <u>(52)</u>	<u>Other Enterprise</u> <u>(58)</u>	<u>TOTAL</u>	<u>Internal Service</u> <u>(60)</u>
Operating Revenues					
6600 Food Service Revenue	181,498			181,498	
0071 Charges for Services					7,170,059
0072 Other Operating Revenue					
Total Operating Revenues	\$181,498			\$181,498	\$7,170,059
Operating Expenses					
100 Personnel Services – Salaries	457,142			457,142	
200 Personnel Services – Employee Benefits	156,071			156,071	7,068,660
300 Purchased Professional and Technical Services	10,550			10,550	22,522
400 Purchased Property Services	36,099			36,099	
500 Other Purchased Services	3,130			3,130	
600 Supplies	825,837			825,837	
740 Depreciation	74,538			74,538	
810 Dues and Fees	1,383			1,383	
880 Refunds of Prior Years' Receipts					
890 Miscellaneous Expenditures					
Total Operating Expenses	\$1,564,750			\$1,564,750	\$7,091,182
Operating Income (Loss)	(\$1,383,252)			(\$1,383,252)	\$78,877
Non Operating Revenues (Expenses)					
6500 Earnings on Investments	4,218			4,218	
6920 Contributions and Donations from Private Sources	37,036			37,036	
6930 Gains or Losses on Sale of Fixed Assets					
6991 Refunds of a Prior Year Expenditure					
7000 Revenue from State Sources	79,495			79,495	
8000 Revenue from Federal Sources	2,092,342			2,092,342	
9990 Insurance Recoveries					
820 Claims and Judgments Against the LEA					
830 Interest					
TOTAL Non Operating Revenues (Expenses)	\$2,213,091			\$2,213,091	
Income (Loss) Before Contributions And Transfers	\$829,839			\$829,839	\$78,877

Amounts Expressed in Whole Dollars	<u>Food Service</u> <u>(51)</u>	<u>Child Care Operations</u> <u>(52)</u>	<u>Other Enterprise</u> <u>(58)</u>	<u>TOTAL</u>	<u>Internal Service</u> <u>(60)</u>
Contributions, Transfers, and Special and Extraordinary Items					
5200 Interfund Transfers – Out	111,693			111,693	
5300 Transfers Out to Component Units/Primary Governments					
5520 Special Items – Losses					
5530 Extraordinary Items – Losses					
9300 Interfund Transfers - IN					
9500 Capital Contributions					
9700 Transfers IN From Component Units/Primary Governments					
9920 Special Items – Gains					
9930 Extraordinary Items – Gains					
Change In Net Position	\$718,146			\$718,146	\$78,877
0002 Net Position - Beginning of Fiscal Year	(519,967)			(519,967)	955,202
0003 Accounting Changes / Residual Equity Transfers					
Net Position - End Of Year	\$198,179			\$198,179	\$1,034,079

LEA : 123468503 Upper Moreland Township SD

Printed 12/14/2022 4:45:14 PM

Amounts Expressed in Whole Dollars		<u>Food Service</u> <u>(51)</u>	<u>Child Care Operations</u> <u>(52)</u>	<u>Other Enterprise</u> <u>(58)</u>	<u>TOTAL</u>	<u>Internal Service(60)</u>
Cash Flows From Operating Activities						
0011	Cash Receipts From Users	272,349			272,349	
0012	Cash Receipts From Assessments Made to Other Funds					7,170,059
0013	Cash Receipts From Earnings on Investments					
0014	Cash Receipts From Other Operating Revenue					
0015	Cash Payments To Employees For Services	725,643			725,643	
0016	Cash Payments For Insurance Claims					
0017	Cash Payments To Suppliers For Goods and Services	701,935			701,935	7,091,182
0018	Cash Payments For Other Operating Expenses					
Net Cash Provided By (Used For) Operating Activities		(\$1,155,229)			(\$1,155,229)	\$78,877
Cash Flows From Non-Capital Financing Activities						
0021	Receipts From Local Sources - 6000					
0022	Receipts From State Sources - 7000	77,891			77,891	
0023	Receipts From Federal Sources -8000	1,943,382			1,943,382	
0024	Notes and Loans Received (Repaid)					
0025	Interest Paid on Notes/Loans - 5100-830					
0026	Operating Transfers In (Out)/Residual Equity Trans					
0027	Operating Transfers In (Out) Primary Government / Comp Unit	1,156,986			1,156,986	(78,877)
0028	Receipts From Refund of Prior Year Expenditures - 6991					
0029	Special and Extraordinary Gains (losses)					
0030	Receipts from Insurance Recoveries -9990					
Net Cash Prov By (Used for) Non-Capital Financing Activities		\$3,178,259			\$3,178,259	(\$78,877)
Cash Flows From Capital and Related Financing Activities						
0031	Payments For Fac Acq, Const, and Imp - 4000					
0032	Gain / (Loss) on Sale of Fixed Assets - 6930					
0033	Proceeds From Extended Term Financing - 9200					
0034	Principal Paid on Financing Agreements					
0035	Interest Paid on Financing Agreements - 5100-830					
0036	(Inc) Dec in Contributed Capital					
Net Cash Prov By (Used for) Capital and Related Financing Activities						
Cash Flows From Investing Activities						
0041	Earnings on Investments - 6500	4,218			4,218	
0042	Purchase of Inv Securities / Deposits to Inv Pools					
0043	Receipts From Investment Pool Withdrawals					
0044	Proceeds from Sale and Maturity of Inv Securities					

LEA : 123468503 Upper Moreland Township SD

Printed 12/14/2022 4:45:14 PM

0045 Loans Received (Paid)

Net Cash Prov By (Used for) Investing Activities	\$4,218	\$4,218
--	---------	---------

LEA : 123468503 Upper Moreland Township SD

Printed 12/14/2022 4:45:14 PM

	<u>Food Service</u> <u>(51)</u>	<u>Child Care Operations</u> <u>(52)</u>	<u>Other Enterprise</u> <u>(58)</u>	<u>TOTAL</u>	<u>Internal Service</u> <u>(60)</u>
Net Increase (Decrease) in Cash Flows	2,027,248			2,027,248	
0004 Cash and Cash Equivalents Beginning of Year	406,340			406,340	
Cash and Cash Equivalents at Year End	\$2,433,588			\$2,433,588	
<hr/>					
Reconciliation of Operating Income (Loss) To Net Cash Provided by (Used For) Operating Activities					
0005 Operating Income (Loss) per REP	(1,383,252)			(1,383,252)	78,877
Adjustments					
0051 Depreciation and Net Amortization	74,538			74,538	
0052 Provision for Uncollectible Accounts					
0053 Other Adjustments					
Effect of Changes in Assets, Liabilities, Deferred Outflows and Deferred Inflows					
0054 (Inc) Dec In Accounts Receivable (0120-0150)	21			21	
0055 Advances to Other Funds (0160)					
0056 (Inc) Dec in Inventories (0170)	12,965			12,965	
0057 (Inc) Dec in Prepaid Expenses (0180)	(1,043)			(1,043)	
0058 (Inc) Dec in Other Current or Noncurrent Assets	37,036			37,036	
0064 Deferred Outflows (0910)					
0059 Inc (Dec) in Accounts Payable (0400-0450)	(10,742)			(10,742)	
0060 Inc (Dec) in Accrued Salaries/Benefits (0461)	(14,027)			(14,027)	
0065 Inc (Dec) in Net Pension Liabilities (0570)	(100,000)			(100,000)	
0066 Inc (Dec) in Other Postemp Benefit Oblig (0560)	1,600			1,600	
0061 Inc (Dec) in Payroll Deductions/Withholding (0462)					
0062 Inc (Dec) in Unearned Revenue (0480)	53,794			53,794	
0063 Inc (Dec) in Other Current or Noncurrent Liabilities	173,885			173,885	
0067 Deferred Inflows (0950)					
Total Adjustments	\$228,027			\$228,027	
Cash Provided By (Used for) Total	(\$1,155,225)			(\$1,155,225)	\$78,877
<hr/>					

COMBINED STATEMENT OF CASH FLOWS
SCHEDULE OF NONCASH INVESTING, CAPITAL, AND FINANCING ACTIVITIES

Explanation of Transaction and Balance Sheet Effect	Amount
Total	

LEA : 123468503 Upper Moreland Township SD

Printed 12/14/2022 4:45:15 PM

Amounts Expressed in Whole Dollars		<u>Private Purpose Trust</u> <u>(71)</u>	<u>Investment Trust</u> <u>(72)</u>	<u>Pension Trust</u> <u>(73)</u>	<u>Student Activity Custodial</u> <u>(81)</u>
Assets And Deferred Outflows Of Resources					
Assets					
0100	Cash and Cash Equivalents		58,434		38,128
0110	Investments				
0130	Due From Other Funds				
0140	Due from Other Governments, Primary Government and Component Units				
0150	Other Receivables				7,485
0170	Inventories				
0180	Prepaid Expenses (Expenditures)				
0190	Other Current Assets				
0220	Buildings and Building Improvements (Net)				
0230	Machinery, Equipment and Furniture (Net)				
Total Assets			\$58,434		\$45,613
0910	Deferred Outflows of Resources				
Total Assets And Deferred Outflows Of Resources			\$58,434		\$45,613

LEA : 123468503 Upper Moreland Township SD

Printed 12/14/2022 4:45:15 PM

Amounts Expressed in Whole Dollars		<u>Other Custodial</u> <u>(89)</u>	<u>Fiduciary Component Units</u> <u>(98)</u>	<u>Total Fiduciary Funds</u>
Assets And Deferred Outflows Of Resources				
Assets				
0100	Cash and Cash Equivalents			96,562
0110	Investments			
0130	Due From Other Funds			
0140	Due from Other Governments, Primary Government and Component Units			
0150	Other Receivables			7,485
0170	Inventories			
0180	Prepaid Expenses (Expenditures)			
0190	Other Current Assets			
0220	Buildings and Building Improvements (Net)			
0230	Machinery, Equipment and Furniture (Net)			
Total Assets				\$104,047
0910	Deferred Outflows of Resources			
Total Assets And Deferred Outflows Of Resources				\$104,047

LEA : 123468503 Upper Moreland Township SD

Printed 12/14/2022 4:45:15 PM

Amounts Expressed in Whole Dollars		<u>Private Purpose Trust</u> <u>(71)</u>	<u>Investment Trust</u> <u>(72)</u>	<u>Pension Trust</u> <u>(73)</u>	<u>Student Activity Custodial</u> <u>(81)</u>
Liabilities, Deferred Inflows Of Resources And Net Position					
Liabilities					
0400	Due to Other Funds				
0410	Due to Other Governments, Primary Government and Component Units				
0420	Accounts Payable				
0430	Contracts Payable				
0450	Short-Term Payables				
0460	Payroll Accruals and Withholdings				
0480	Unearned Revenues				
0490	Other Current Liabilities		9,600		
Total Liabilities			\$9,600		
0950	Deferred Inflows of Resources				
Net Position					
0791	Net Investment in Capital Assets				
0009	Restricted Net Position (0792 – 0798)		48,834		45,613
0799	Unrestricted Net Position				
Total Net Position			\$48,834		\$45,613
Total Liabilities, Deferred Inflows Of Resources And Net Position			\$58,434		\$45,613

LEA : 123468503 Upper Moreland Township SD

Printed 12/14/2022 4:45:15 PM

Amounts Expressed in Whole Dollars		<u>Other Custodial</u> <u>(89)</u>	<u>Fiduciary Component Units</u> <u>(98)</u>	<u>Total Fiduciary Funds</u>
Liabilities, Deferred Inflows Of Resources And Net Position				
Liabilities				
0400	Due to Other Funds			
0410	Due to Other Governments, Primary Government and Component Units			
0420	Accounts Payable			
0430	Contracts Payable			
0450	Short-Term Payables			
0460	Payroll Accruals and Withholdings			
0480	Unearned Revenues			
0490	Other Current Liabilities			9,600
Total Liabilities				\$9,600
0950	Deferred Inflows of Resources			
Net Position				
0791	Net Investment in Capital Assets			
0009	Restricted Net Position (0792 – 0798)			94,447
0799	Unrestricted Net Position			
Total Net Position				\$94,447
Total Liabilities, Deferred Inflows Of Resources And Net Position				\$104,047

LEA : 123468503 Upper Moreland Township SD

Printed 12/14/2022 4:45:17 PM

Amounts Expressed in Whole Dollars	<u>Private Purpose Trust</u> <u>(71)</u>	<u>Investment Trust</u> <u>(72)</u>	<u>Pension Trust</u> <u>(73)</u>	<u>Student Activity</u> <u>Custodial</u> <u>(81)</u>	<u>Other Custodial</u> <u>(89)</u>	<u>Fiduciary Component</u> <u>Units</u> <u>(98)</u>
Additions						
0091 Gifts and Contributions		17,976				
0095 Net Investment Earnings		185		132		
0092 Other Additions				205,428		
Deductions						
0093 Scholarships Awarded		10,100				
0094 Other Deductions				194,845		
Change In Net Position		\$8,061		\$10,715		
0006 Net Position – Beginning of Fiscal Year		40,773		34,898		
0007 Net Position Held in Trust for Pension Benefits						
Net Position - End of Fiscal Year		\$48,834		\$45,613		

LEA : 123468503 Upper Moreland Township SD

Printed 12/14/2022 4:45:17 PM

Amounts Expressed in Whole Dollars		<u>Total Fiduciary</u>
		<u>Funds</u>
Additions		
0091	Gifts and Contributions	17,976
0095	Net Investment Earnings	317
0092	Other Additions	205,428
Deductions		
0093	Scholarships Awarded	10,100
0094	Other Deductions	194,845
Change In Net Position		\$18,776
0006	Net Position – Beginning of Fiscal Year	75,671
0007	Net Position Held in Trust for Pension Benefits	
Net Position - End of Fiscal Year		\$94,447

	Revenue Reported In Current Year	Current Year Tax Accrual	Prior Year Tax Accrual	Taxes Collected In Current Year
Revenue from Local Sources				
6111 Current Real Estate Taxes	49,443,713.94			49,443,713.94
6112 Interim Real Estate Taxes	349,898.83			349,898.83
6113 Public Utility Realty Taxes	49,610.43			49,610.43
6151 Current Act 511 Earned Income Taxes	3,804,998.92			3,804,998.92
6153 Current Act 511 Real Estate Transfer Taxes	1,149,155.29			1,149,155.29
6411 Delinquent Real Estate Taxes	921,913.20			921,913.20
6500 Earnings on Investments	37,223.81			
6700 Revenues from LEA Activities	127,420.58			
6831 Federal Revenue Received from Other Pennsylvania Public LEAs	618,088.58			
6832 Federal IDEA Revenue Received as Pass Through	2,744.00			
6910 Rentals	110,423.62			
6944 Receipts from Other LEAs in Pennsylvania - Education	2,133.22			
6962 Other Services Provided Other Pennsylvania LEAs	786.94			
6991 Refunds of a Prior Year Expenditure	55,364.51			
6992 Energy Efficiency Revenues and Incentives	16,502.09			
6999 Other Revenues Not Specified Above	266,139.84			
TOTAL Revenue from Local Sources	\$56,956,117.80			\$55,719,290.61

	Revenue Reported <u>In Current Year</u>			
<u>Revenue from State Sources</u>				
7111 Basic Education Funding-Formula	4,203,165.17			
7112 Basic Education Funding-Social Security	722,427.38			
7160 Tuition for Orphans Subsidy	55,760.09			
7271 Special Education funds for School-Aged Pupils	1,851,400.22			
7311 Pupil Transportation Subsidy	244,192.44			
7312 Nonpublic and Charter School Pupil Transportation Subsidy	124,740.00			
7320 Rental and Sinking Fund Payments / Building Reimbursement Subsidy	492,570.22			
7330 Health Services (Medical, Dental, Nurse, Act 25)	63,021.06			
7340 State Property Tax Reduction Allocation	1,345,390.79			
7505 Ready to Learn Block Grant	187,164.00			
7820 State Share of Retirement Contributions	4,901,219.54			
TOTAL Revenue from State Sources	\$14,191,050.91			

Revenue Reported In Current Year				
Revenue from Federal Sources				
8514 NCLB, Title I - Improving the Academic Achievement of the Disadvantaged	320,712.00			
8515 NCLB, Title II - Preparing, Training and Recruiting High Quality Teachers and Principals	66,984.00			
8516 NCLB, Title III - Language Instruction for Limited English Proficient and Immigrant Students	34,432.00			
8517 NCLB, Title IV - 21St Century Schools	23,442.00			
8743 ESSER II - Elementary and Secondary School Emergency Relief Fund	633,608.58			
8744 ARP ESSER - Elementary and Secondary School Emergency Relief Fund	924,818.79			
8751 ARP ESSER Learning Loss	87,018.04			
8752 ARP ESSER Summer Programs	9,900.23			
8753 ARP ESSER Afterschool Programs	5,385.16			
8810 School-Based Access Medicaid Reimbursement Program (SBAP) Reimbursements (Access)	59,038.78			
8820 Medical Assistance Reimbursement for Administrative Claiming (Quarterly) Program	14,887.22			
TOTAL Revenue from Federal Sources	\$2,180,226.80			

	Revenue Reported <u>In Current Year</u>	
<u>Other Financing Sources</u>		
9350 Enterprise Fund Transfers	111,693.14	
TOTAL Other Financing Sources	\$111,693.14	
TOTAL FROM ALL SOURCES	\$73,439,088.65	\$55,719,290.61

LEA : 123468503 Upper Moreland Township SD

Printed 12/14/2022 4:45:19 PM

	<u>General Fund (10)</u>	<u>Student Sponsored Activity Fund (21)</u>	<u>Public Purpose Trust (27)</u>	<u>Other Compt Approved (28)</u>	<u>Athletic / Activity (29)</u>	<u>Capital Reserve (690, 1850) (31)</u>
6000 Revenue from Local Sources						
6111 Current Real Estate Taxes	49,443,713.94					
6112 Interim Real Estate Taxes	349,898.83					
6113 Public Utility Realty Taxes	49,610.43					
6151 Current Act 511 Earned Income Taxes	3,804,998.92					
6153 Current Act 511 Real Estate Transfer Taxes	1,149,155.29					
6411 Delinquent Real Estate Taxes	921,913.20					
6500 Earnings on Investments	37,223.81					
6700 Revenues from LEA Activities	127,420.58					
6831 Federal Revenue Received from Other Pennsylvania Public LEAs	618,088.58					
6832 Federal IDEA Revenue Received as Pass Through	2,744.00					
6910 Rentals	110,423.62					
6944 Receipts from Other LEAs in Pennsylvania - Education	2,133.22					
6962 Other Services Provided Other Pennsylvania LEAs	786.94					
6991 Refunds of a Prior Year Expenditure	55,364.51					
6992 Energy Efficiency Revenues and Incentives	16,502.09					
6999 Other Revenues Not Specified Above	266,139.84					
6000 Total Revenue from Local Sources	\$56,956,117.80					
7000 Revenue from State Sources						
7111 Basic Education Funding-Formula	4,203,165.17					
7112 Basic Education Funding-Social Security	722,427.38					
7160 Tuition for Orphans Subsidy	55,760.09					
7271 Special Education funds for School-Aged Pupils	1,851,400.22					
7311 Pupil Transportation Subsidy	244,192.44					
7312 Nonpublic and Charter School Pupil Transportation Subsidy	124,740.00					
7320 Rental and Sinking Fund Payments / Building Reimbursement Subsidy	492,570.22					
7330 Health Services (Medical, Dental, Nurse, Act 25)	63,021.06					
7340 State Property Tax Reduction Allocation	1,345,390.79					
7505 Ready to Learn Block Grant	187,164.00					
7820 State Share of Retirement Contributions	4,901,219.54					
7000 Total Revenue from State Sources	\$14,191,050.91					
8000 Revenue from Federal Sources						
8514 NCLB, Title I - Improving the Academic Achievement of the Disadvantaged	320,712.00					
8515 NCLB, Title II - Preparing, Training and Recruiting High Quality Teachers and Principals	66,984.00					
8516 NCLB, Title III - Language Instruction for Limited English Proficient and Immigrant Students	34,432.00					

LEA : 123468503 Upper Moreland Township SD

Printed 12/14/2022 4:45:19 PM

	<u>Capital Reserve</u> <u>(1431) (32)</u>	<u>Other Capital</u> <u>Projects Fund (39)</u>	<u>Debt Service (40)</u>	<u>Permanent (90)</u>	<u>Total</u>
6000 Revenue from Local Sources					
6111 Current Real Estate Taxes					49,443,713.94
6112 Interim Real Estate Taxes					349,898.83
6113 Public Utility Realty Taxes					49,610.43
6151 Current Act 511 Earned Income Taxes					3,804,998.92
6153 Current Act 511 Real Estate Transfer Taxes					1,149,155.29
6411 Delinquent Real Estate Taxes					921,913.20
6500 Earnings on Investments	14,759.24		14,791.61		66,774.66
6700 Revenues from LEA Activities					127,420.58
6831 Federal Revenue Received from Other Pennsylvania Public LEAs					618,088.58
6832 Federal IDEA Revenue Received as Pass Through					2,744.00
6910 Rentals					110,423.62
6944 Receipts from Other LEAs in Pennsylvania - Education					2,133.22
6962 Other Services Provided Other Pennsylvania LEAs					786.94
6991 Refunds of a Prior Year Expenditure					55,364.51
6992 Energy Efficiency Revenues and Incentives					16,502.09
6999 Other Revenues Not Specified Above					266,139.84
6000 Total Revenue from Local Sources	\$14,759.24		\$14,791.61		\$56,985,668.65
7000 Revenue from State Sources					
7111 Basic Education Funding-Formula					4,203,165.17
7112 Basic Education Funding-Social Security					722,427.38
7160 Tuition for Orphans Subsidy					55,760.09
7271 Special Education funds for School-Aged Pupils					1,851,400.22
7311 Pupil Transportation Subsidy					244,192.44
7312 Nonpublic and Charter School Pupil Transportation Subsidy					124,740.00
7320 Rental and Sinking Fund Payments / Building Reimbursement Subsidy					492,570.22
7330 Health Services (Medical, Dental, Nurse, Act 25)					63,021.06
7340 State Property Tax Reduction Allocation					1,345,390.79
7505 Ready to Learn Block Grant					187,164.00
7820 State Share of Retirement Contributions					4,901,219.54
7000 Total Revenue from State Sources					\$14,191,050.91
8000 Revenue from Federal Sources					
8514 NCLB, Title I - Improving the Academic Achievement of the Disadvantaged					320,712.00
8515 NCLB, Title II - Preparing, Training and Recruiting High Quality Teachers and Principals					66,984.00
8516 NCLB, Title III - Language Instruction for Limited English Proficient and Immigrant Students					34,432.00

LEA : 123468503 Upper Moreland Township SD

Printed 12/14/2022 4:45:19 PM

	<u>General Fund (10)</u>	<u>Student Sponsored Activity Fund (21)</u>	<u>Public Purpose Trust (27)</u>	<u>Other Compt Approved (28)</u>	<u>Athletic / Activity (29)</u>	<u>Capital Reserve (690, 1850) (31)</u>
8000 Revenue from Federal Sources						
8517 NCLB, Title IV - 21st Century Schools	23,442.00					
8743 ESSER II - Elementary and Secondary School Emergency Relief Fund	633,608.58					
8744 ARP ESSER - Elementary and Secondary School Emergency Relief Fund	924,818.79					
8751 ARP ESSER Learning Loss	87,018.04					
8752 ARP ESSER Summer Programs	9,900.23					
8753 ARP ESSER Afterschool Programs	5,385.16					
8810 School-Based Access Medicaid Reimbursement Program (SBAP) Reimbursements (Access)	59,038.78					
8820 Medical Assistance Reimbursement for Administrative Claiming (Quarterly) Program	14,887.22					
8000 Total Revenue from Federal Sources	\$2,180,226.80					
9000 Other Financing Sources						
9310 General Fund Transfers						
9350 Enterprise Fund Transfers	111,693.14					
9000 Total Other Financing Sources	\$111,693.14					
Total From All Sources	\$73,439,088.65					

LEA : 123468503 Upper Moreland Township SD

Printed 12/14/2022 4:45:19 PM

	<u>Capital Reserve</u> <u>(1431) (32)</u>	<u>Other Capital</u> <u>Projects Fund (39)</u>	<u>Debt Service (40)</u>	<u>Permanent (90)</u>	<u>Total</u>
8000 Revenue from Federal Sources					
8517 NCLB, Title IV - 21st Century Schools					23,442.00
8743 ESSER II - Elementary and Secondary School Emergency Relief Fund					633,608.58
8744 ARP ESSER - Elementary and Secondary School Emergency Relief Fund					924,818.79
8751 ARP ESSER Learning Loss					87,018.04
8752 ARP ESSER Summer Programs					9,900.23
8753 ARP ESSER Afterschool Programs					5,385.16
8810 School-Based Access Medicaid Reimbursement Program (SBAP) Reimbursements (Access)					59,038.78
8820 Medical Assistance Reimbursement for Administrative Claiming (Quarterly) Program					14,887.22
8000 Total Revenue from Federal Sources					\$2,180,226.80
9000 Other Financing Sources					
9310 General Fund Transfers	4,211,119.04		7,128,270.75		11,339,389.79
9350 Enterprise Fund Transfers					111,693.14
9000 Total Other Financing Sources	\$4,211,119.04		\$7,128,270.75		\$11,451,082.93
Total From All Sources	\$4,225,878.28		\$7,143,062.36		\$84,808,029.29

LEA : 123468503 Upper Moreland Township SD

Printed 12/14/2022 4:45:21 PM

	<u>General Fund (10)</u>	<u>Student Sponsored Activity Fund (21)</u>	<u>Public Purpose Trust (27)</u>	<u>Other Compt Approved (28)</u>	<u>Athletic / Activity (29)</u>	<u>Capital Reserve (690. 1850) (31)</u>
Revenue from Local Sources	56,956,117.80					
Revenue from State Sources	14,191,050.91					
Revenue from Federal Sources	2,180,226.80					
Other Financing Sources	111,693.14					
Total From All Sources	\$73,439,088.65					

LEA : 123468503 Upper Moreland Township SD

Printed 12/14/2022 4:45:21 PM

	<u>Capital Reserve (1431)</u> <u>(32)</u>	<u>Other Capital Projects</u> <u>Fund (39)</u>	<u>Debt Service (40)</u>	<u>Permanent (90)</u>	<u>Total</u>
Revenue from Local Sources	14,759.24		14,791.61		56,985,668.65
Revenue from State Sources					14,191,050.91
Revenue from Federal Sources					2,180,226.80
Other Financing Sources	4,211,119.04		7,128,270.75		11,451,082.93
Total From All Sources	\$4,225,878.28		\$7,143,062.36		\$84,808,029.29

LEA : 123468503 Upper Moreland Township SD

Printed 12/14/2022 4:45:28 PM

General Fund (10)

1000 Instruction	Total
100 <u>Personnel Services – Salaries</u>	
100 Personnel Services – Salaries	19,946,212.90
Total Personnel Services – Salaries	\$19,946,212.90
200 <u>Personnel Services – Employee Benefits</u>	
210 Group Insurance – Contracted Provider	31,180.17
220 Social Security Contributions	1,458,815.82
230 PSERS Retirement Contributions	6,777,104.46
250 Unemployment Compensation	198,285.95
260 Workers' Compensation	129,964.37
270 Group Insurance – Self-Insurance	3,958,361.41
299 All Other Employee Benefits	(95.43)
Total Personnel Services – Employee Benefits	\$12,553,616.75
300 <u>Purchased Professional and Technical Services</u>	
322 Professional Educational Services – lus	788,799.30
330 Other Professional Services	1,122,716.99
340 Technical Services	86,102.84
Total Purchased Professional and Technical Services	\$1,997,619.13
400 <u>Purchased Property Services</u>	
430 Repairs and Maintenance Services	4,739.10
Total Purchased Property Services	\$4,739.10
500 <u>Other Purchased Services</u>	
530 Communications	8.30
561 Tuition To Other School Districts Within the State	9,748.00
562 Tuition To Pennsylvania Charter Schools	1,708,648.31
563 Tuition To Nonpublic Schools	9,444.99
564 Tuition To Career and Technology Centers	1,384,927.00
566 Tuition To Institutions of Higher Education and Technical Institutes	2,352.00
567 Tuition To Approved Private Schools (APS) and PA Chartered Schools for the Deaf and Blind	438,708.82
569 Tuition – Other	742,877.63
580 Travel	11,629.32
594 IU Payment By Withholding for Institutionalized Children's Programs – Special Classes	878.58
Total Other Purchased Services	\$4,309,222.95
600 <u>Supplies</u>	
610 General Supplies	718,761.03
640 Books and Periodicals	749,737.88
Total Supplies	\$1,468,498.91
800 <u>Other Objects</u>	
810 Dues and Fees	1,637.22
880 Refunds of Prior Years' Receipts	6,653.00
890 Miscellaneous Expenditures	31,500.00
Total Other Objects	\$39,790.22
Total 1000 Instruction	\$40,319,699.96

LEA : 123468503 Upper Moreland Township SD

Printed 12/14/2022 4:45:28 PM

General Fund (10)

1100 Regular Programs – Elementary / Secondary	Elementary	Secondary	Federal	Total
100 <u>Personnel Services – Salaries</u>				
100 Personnel Services – Salaries	8,049,929.45	7,282,810.95	539,220.48	15,871,960.88
Total Personnel Services – Salaries	\$8,049,929.45	\$7,282,810.95	\$539,220.48	\$15,871,960.88
200 <u>Personnel Services – Employee Benefits</u>				
210 Group Insurance – Contracted Provider	12,100.62	10,386.17	798.76	23,285.55
220 Social Security Contributions	591,191.81	533,456.38	40,245.66	1,164,893.85
230 PSERS Retirement Contributions	2,763,957.13	2,515,458.97	151,535.00	5,430,951.10
250 Unemployment Compensation	80,186.11	72,390.75	5,393.53	157,970.39
260 Workers' Compensation	52,481.97	47,648.83	3,550.18	103,680.98
270 Group Insurance – Self-Insurance	1,544,304.52	1,457,001.71	70,783.35	3,072,089.58
Total Personnel Services – Employee Benefits	\$5,044,222.16	\$4,636,342.81	\$272,306.48	\$9,952,871.45
300 <u>Purchased Professional and Technical Services</u>				
330 Other Professional Services	369,060.78	131,156.07	16,925.75	517,142.60
340 Technical Services	42,338.33	42,037.39		84,375.72
Total Purchased Professional and Technical Services	\$411,399.11	\$173,193.46	\$16,925.75	\$601,518.32
400 <u>Purchased Property Services</u>				
430 Repairs and Maintenance Services	900.00	3,839.10		4,739.10
Total Purchased Property Services	\$900.00	\$3,839.10		\$4,739.10
500 <u>Other Purchased Services</u>				
562 Tuition To Pennsylvania Charter Schools	439,468.64	671,962.69		1,111,431.33
563 Tuition To Nonpublic Schools	1,899.16	7,545.83		9,444.99
566 Tuition To Institutions of Higher Education and Technical Institutes		2,352.00		2,352.00
569 Tuition – Other		18,895.11		18,895.11
580 Travel	9.41	1,372.15		1,381.56
Total Other Purchased Services	\$441,377.21	\$702,127.78		\$1,143,504.99
600 <u>Supplies</u>				
610 General Supplies	76,591.13	190,055.45	399,001.12	665,647.70
640 Books and Periodicals	78,663.03	71,669.64	598,064.49	748,397.16
Total Supplies	\$155,254.16	\$261,725.09	\$997,065.61	\$1,414,044.86
800 <u>Other Objects</u>				
810 Dues and Fees	459.00	1,178.22		1,637.22
880 Refunds of Prior Years' Receipts		6,653.00		6,653.00
Total Other Objects	\$459.00	\$7,831.22		\$8,290.22
Total 1100 Regular Programs – Elementary / Secondary	\$14,103,541.09	\$13,067,870.41	\$1,825,518.32	\$28,996,929.82

LEA : 123468503 Upper Moreland Township SD

Printed 12/14/2022 4:45:28 PM

General Fund (10)

1110 Regular Programs	Elementary	Secondary	Federal	Total
100 <u>Personnel Services – Salaries</u>				
100 Personnel Services – Salaries	8,049,929.45	7,282,810.95		15,332,740.40
Total Personnel Services – Salaries	\$8,049,929.45	\$7,282,810.95		\$15,332,740.40
200 <u>Personnel Services – Employee Benefits</u>				
210 Group Insurance – Contracted Provider	12,100.62	10,386.17		22,486.79
220 Social Security Contributions	591,191.81	533,456.38		1,124,648.19
230 PSERS Retirement Contributions	2,763,957.13	2,515,458.97		5,279,416.10
250 Unemployment Compensation	80,186.11	72,390.75		152,576.86
260 Workers' Compensation	52,481.97	47,648.83		100,130.80
270 Group Insurance – Self-Insurance	1,544,304.52	1,457,001.71		3,001,306.23
Total Personnel Services – Employee Benefits	\$5,044,222.16	\$4,636,342.81		\$9,680,564.97
300 <u>Purchased Professional and Technical Services</u>				
330 Other Professional Services	369,060.78	131,156.07		500,216.85
340 Technical Services	42,338.33	42,037.39		84,375.72
Total Purchased Professional and Technical Services	\$411,399.11	\$173,193.46		\$584,592.57
400 <u>Purchased Property Services</u>				
430 Repairs and Maintenance Services	900.00	3,839.10		4,739.10
Total Purchased Property Services	\$900.00	\$3,839.10		\$4,739.10
500 <u>Other Purchased Services</u>				
562 Tuition To Pennsylvania Charter Schools	439,468.64	671,962.69		1,111,431.33
563 Tuition To Nonpublic Schools	1,899.16	7,545.83		9,444.99
566 Tuition To Institutions of Higher Education and Technical Institutes		2,352.00		2,352.00
569 Tuition – Other		18,895.11		18,895.11
580 Travel	9.41	1,372.15		1,381.56
Total Other Purchased Services	\$441,377.21	\$702,127.78		\$1,143,504.99
600 <u>Supplies</u>				
610 General Supplies	76,591.13	190,055.45		266,646.58
640 Books and Periodicals	78,663.03	71,669.64		150,332.67
Total Supplies	\$155,254.16	\$261,725.09		\$416,979.25
800 <u>Other Objects</u>				
810 Dues and Fees	459.00	1,178.22		1,637.22
880 Refunds of Prior Years' Receipts		6,653.00		6,653.00
Total Other Objects	\$459.00	\$7,831.22		\$8,290.22
Total 1110 Regular Programs	\$14,103,541.09	\$13,067,870.41		\$27,171,411.50

LEA : 123468503 Upper Moreland Township SD

Printed 12/14/2022 4:45:28 PM

General Fund (10)

1190 Federally-Funded Regular Programs	<u>Elementary</u>	<u>Secondary</u>	<u>Federal</u>	<u>Total</u>
100 <u>Personnel Services – Salaries</u>				
100 Personnel Services – Salaries			539,220.48	539,220.48
Total Personnel Services – Salaries			\$539,220.48	\$539,220.48
200 <u>Personnel Services – Employee Benefits</u>				
210 Group Insurance – Contracted Provider			798.76	798.76
220 Social Security Contributions			40,245.66	40,245.66
230 PSERS Retirement Contributions			151,535.00	151,535.00
250 Unemployment Compensation			5,393.53	5,393.53
260 Workers' Compensation			3,550.18	3,550.18
270 Group Insurance – Self-Insurance			70,783.35	70,783.35
Total Personnel Services – Employee Benefits			\$272,306.48	\$272,306.48
300 <u>Purchased Professional and Technical Services</u>				
330 Other Professional Services			16,925.75	16,925.75
Total Purchased Professional and Technical Services			\$16,925.75	\$16,925.75
600 <u>Supplies</u>				
610 General Supplies			399,001.12	399,001.12
640 Books and Periodicals			598,064.49	598,064.49
Total Supplies			\$997,065.61	\$997,065.61
Total 1190 Federally-Funded Regular Programs			\$1,825,518.32	\$1,825,518.32

LEA : 123468503 Upper Moreland Township SD

Printed 12/14/2022 4:45:28 PM

General Fund (10)

1200 Special Programs – Elementary / Secondary

	Elementary	Secondary	Federal	Total
100 Personnel Services – Salaries				
100 Personnel Services – Salaries	1,856,246.29	2,146,838.00	71,167.73	4,074,252.02
Total Personnel Services – Salaries	\$1,856,246.29	\$2,146,838.00	\$71,167.73	\$4,074,252.02
200 Personnel Services – Employee Benefits				
210 Group Insurance – Contracted Provider	3,730.71	4,141.99	21.92	7,894.62
220 Social Security Contributions	134,916.69	153,648.59	5,356.69	293,921.97
230 PSERS Retirement Contributions	615,216.39	711,082.59	19,854.38	1,346,153.36
250 Unemployment Compensation	18,536.02	21,067.74	711.80	40,315.56
260 Workers' Compensation	11,905.82	13,951.39	426.18	26,283.39
270 Group Insurance – Self-Insurance	414,530.25	466,826.33	4,915.25	886,271.83
299 All Other Employee Benefits	(70.82)	(24.61)		(95.43)
Total Personnel Services – Employee Benefits	\$1,198,765.06	\$1,370,694.02	\$31,286.22	\$2,600,745.30
300 Purchased Professional and Technical Services				
322 Professional Educational Services – Ius	322,597.53	459,693.39		782,290.92
330 Other Professional Services	180,746.53	70,130.23	354,697.63	605,574.39
340 Technical Services	1,727.12			1,727.12
Total Purchased Professional and Technical Services	\$505,071.18	\$529,823.62	\$354,697.63	\$1,389,592.43
500 Other Purchased Services				
530 Communications		8.30		8.30
561 Tuition To Other School Districts Within the State	9,748.00			9,748.00
562 Tuition To Pennsylvania Charter Schools	105,351.68	491,865.30		597,216.98
567 Tuition To Approved Private Schools (APS) and PA Chartered Schools for the Deaf and Blind	146,236.28	292,472.54		438,708.82
569 Tuition – Other	90,167.56	380,118.96	253,696.00	723,982.52
580 Travel	8,695.23	1,552.53		10,247.76
594 IU Payment By Withholding for Institutionalized Children's Programs – Special Classes		878.58		878.58
Total Other Purchased Services	\$360,198.75	\$1,166,896.21	\$253,696.00	\$1,780,790.96
600 Supplies				
610 General Supplies	21,693.42	7,433.54	20,523.73	49,650.69
640 Books and Periodicals	663.33	677.39		1,340.72
Total Supplies	\$22,356.75	\$8,110.93	\$20,523.73	\$50,991.41
Total 1200 Special Programs – Elementary / Secondary	\$3,942,638.03	\$5,222,362.78	\$731,371.31	\$9,896,372.12

LEA : 123468503 Upper Moreland Township SD

Printed 12/14/2022 4:45:28 PM

General Fund (10)

1210 Life Skills Support

	<u>Elementary</u>	<u>Secondary</u>	<u>Federal</u>	<u>Total</u>
100 <u>Personnel Services – Salaries</u>				
100 Personnel Services – Salaries	320,879.79	299,055.14	61,265.64	681,200.57
Total Personnel Services – Salaries	\$320,879.79	\$299,055.14	\$61,265.64	\$681,200.57
200 <u>Personnel Services – Employee Benefits</u>				
210 Group Insurance – Contracted Provider	527.66	584.41		1,112.07
220 Social Security Contributions	23,566.63	21,671.65	4,661.90	49,900.18
230 PSERS Retirement Contributions	108,440.45	101,138.67	16,399.44	225,978.56
250 Unemployment Compensation	3,208.46	2,991.01	612.79	6,812.26
260 Workers' Compensation	1,993.22	1,902.40	367.78	4,263.40
270 Group Insurance – Self-Insurance	48,220.49	54,960.94		103,181.43
299 All Other Employee Benefits	(35.41)	(35.40)		(70.81)
Total Personnel Services – Employee Benefits	\$185,921.50	\$183,213.68	\$22,041.91	\$391,177.09
300 <u>Purchased Professional and Technical Services</u>				
322 Professional Educational Services – lus	38,096.08			38,096.08
340 Technical Services	1,727.12			1,727.12
Total Purchased Professional and Technical Services	\$39,823.20			\$39,823.20
500 <u>Other Purchased Services</u>				
530 Communications		8.30		8.30
580 Travel	743.61	743.40		1,487.01
Total Other Purchased Services	\$743.61	\$751.70		\$1,495.31
600 <u>Supplies</u>				
610 General Supplies	1,453.44	373.05	2,157.84	3,984.33
Total Supplies	\$1,453.44	\$373.05	\$2,157.84	\$3,984.33
Total 1210 Life Skills Support	\$548,821.54	\$483,393.57	\$85,465.39	\$1,117,680.50

LEA : 123468503 Upper Moreland Township SD

Printed 12/14/2022 4:45:28 PM

General Fund (10)

1220 Sensory Support	Elementary	Secondary	Federal	Total
100 <u>Personnel Services – Salaries</u>				
100 Personnel Services – Salaries	119,549.99	48,729.24		168,279.23
Total Personnel Services – Salaries	\$119,549.99	\$48,729.24		\$168,279.23
200 <u>Personnel Services – Employee Benefits</u>				
210 Group Insurance – Contracted Provider	262.54	78.30		340.84
220 Social Security Contributions	8,924.68	3,670.48		12,595.16
230 PSERS Retirement Contributions	23,015.77	16,795.06		39,810.83
250 Unemployment Compensation	1,195.32	487.28		1,682.60
260 Workers' Compensation	758.58	320.01		1,078.59
270 Group Insurance – Self-Insurance	18,615.14	5,473.28		24,088.42
Total Personnel Services – Employee Benefits	\$52,772.03	\$26,824.41		\$79,596.44
300 <u>Purchased Professional and Technical Services</u>				
322 Professional Educational Services – Ius	11,135.09	72,533.21		83,668.30
330 Other Professional Services	95,407.83			95,407.83
Total Purchased Professional and Technical Services	\$106,542.92	\$72,533.21		\$179,076.13
600 <u>Supplies</u>				
610 General Supplies	181.03	3,829.85		4,010.88
Total Supplies	\$181.03	\$3,829.85		\$4,010.88
Total 1220 Sensory Support	\$279,045.97	\$151,916.71		\$430,962.68

LEA : 123468503 Upper Moreland Township SD

Printed 12/14/2022 4:45:28 PM

General Fund (10)

1230 Emotional Support	Elementary	Secondary	Federal	Total
100 <u>Personnel Services – Salaries</u>				
100 Personnel Services – Salaries	302,782.07	271,695.51		574,477.58
Total Personnel Services – Salaries	\$302,782.07	\$271,695.51		\$574,477.58
200 <u>Personnel Services – Employee Benefits</u>				
210 Group Insurance – Contracted Provider	712.85	644.45		1,357.30
220 Social Security Contributions	21,524.60	19,786.92		41,311.52
230 PSERS Retirement Contributions	97,907.99	93,953.55		191,861.54
250 Unemployment Compensation	3,022.36	2,716.93		5,739.29
260 Workers' Compensation	1,949.51	1,752.70		3,702.21
270 Group Insurance – Self-Insurance	92,392.65	74,027.30		166,419.95
Total Personnel Services – Employee Benefits	\$217,509.96	\$192,881.85		\$410,391.81
300 <u>Purchased Professional and Technical Services</u>				
322 Professional Educational Services – Ius	54,130.00	263,958.45		318,088.45
330 Other Professional Services		4,999.78		4,999.78
Total Purchased Professional and Technical Services	\$54,130.00	\$268,958.23		\$323,088.23
500 <u>Other Purchased Services</u>				
569 Tuition – Other	90,167.56	218,543.96	165,331.40	474,042.92
Total Other Purchased Services	\$90,167.56	\$218,543.96	\$165,331.40	\$474,042.92
600 <u>Supplies</u>				
610 General Supplies	1,035.33	390.54		1,425.87
Total Supplies	\$1,035.33	\$390.54		\$1,425.87
Total 1230 Emotional Support	\$665,624.92	\$952,470.09	\$165,331.40	\$1,783,426.41

LEA : 123468503 Upper Moreland Township SD

Printed 12/14/2022 4:45:28 PM

General Fund (10)

1240 Academic Support

	Elementary	Secondary	Federal	Total
100 <u>Personnel Services – Salaries</u>				
100 Personnel Services – Salaries	1,113,034.44	1,527,358.11	9,902.09	2,650,294.64
Total Personnel Services – Salaries	\$1,113,034.44	\$1,527,358.11	\$9,902.09	\$2,650,294.64
200 <u>Personnel Services – Employee Benefits</u>				
210 Group Insurance – Contracted Provider	2,227.66	2,834.83	21.92	5,084.41
220 Social Security Contributions	80,900.78	108,519.54	694.79	190,115.11
230 PSERS Retirement Contributions	385,852.18	499,195.31	3,454.94	888,502.43
250 Unemployment Compensation	11,109.88	14,872.52	99.01	26,081.41
260 Workers' Compensation	7,204.51	9,976.28	58.40	17,239.19
270 Group Insurance – Self-Insurance	255,301.97	332,364.81	4,915.25	592,582.03
299 All Other Employee Benefits	(35.41)	10.79		(24.62)
Total Personnel Services – Employee Benefits	\$742,561.57	\$967,774.08	\$9,244.31	\$1,719,579.96
300 <u>Purchased Professional and Technical Services</u>				
322 Professional Educational Services – lus		30,117.93		30,117.93
330 Other Professional Services	85,338.70	9,605.00	11,864.37	106,808.07
Total Purchased Professional and Technical Services	\$85,338.70	\$39,722.93	\$11,864.37	\$136,926.00
500 <u>Other Purchased Services</u>				
562 Tuition To Pennsylvania Charter Schools	105,351.68	491,865.30		597,216.98
569 Tuition – Other		161,575.00	88,364.60	249,939.60
580 Travel	7,951.62	809.13		8,760.75
Total Other Purchased Services	\$113,303.30	\$654,249.43	\$88,364.60	\$855,917.33
600 <u>Supplies</u>				
610 General Supplies	19,023.62	2,283.74	18,365.89	39,673.25
640 Books and Periodicals	663.33	677.39		1,340.72
Total Supplies	\$19,686.95	\$2,961.13	\$18,365.89	\$41,013.97
Total 1240 Academic Support	\$2,073,924.96	\$3,192,065.68	\$137,741.26	\$5,403,731.90

LEA : 123468503 Upper Moreland Township SD

Printed 12/14/2022 4:45:28 PM

General Fund (10)

1241 Learning Support – Public	Elementary	Secondary	Federal	Total
100 <u>Personnel Services – Salaries</u>				
100 Personnel Services – Salaries	969,577.57	1,378,629.01	9,902.09	2,358,108.67
Total Personnel Services – Salaries	\$969,577.57	\$1,378,629.01	\$9,902.09	\$2,358,108.67
200 <u>Personnel Services – Employee Benefits</u>				
210 Group Insurance – Contracted Provider	2,067.40	2,683.29	21.92	4,772.61
220 Social Security Contributions	70,365.82	97,654.03	694.79	168,714.64
230 PSERS Retirement Contributions	336,303.70	447,688.88	3,454.94	787,447.52
250 Unemployment Compensation	9,675.06	13,385.44	99.01	23,159.51
260 Workers' Compensation	6,324.79	8,989.10	58.40	15,372.29
270 Group Insurance – Self-Insurance	222,174.86	292,338.98	4,915.25	519,429.09
299 All Other Employee Benefits	(35.41)	10.79		(24.62)
Total Personnel Services – Employee Benefits	\$646,876.22	\$862,750.51	\$9,244.31	\$1,518,871.04
300 <u>Purchased Professional and Technical Services</u>				
322 Professional Educational Services – Ius		30,117.93		30,117.93
330 Other Professional Services	85,338.70	9,605.00	11,864.37	106,808.07
Total Purchased Professional and Technical Services	\$85,338.70	\$39,722.93	\$11,864.37	\$136,926.00
500 <u>Other Purchased Services</u>				
562 Tuition To Pennsylvania Charter Schools	105,351.68	491,865.30		597,216.98
569 Tuition – Other		161,575.00	88,364.60	249,939.60
580 Travel	7,951.62	809.13		8,760.75
Total Other Purchased Services	\$113,303.30	\$654,249.43	\$88,364.60	\$855,917.33
600 <u>Supplies</u>				
610 General Supplies	18,754.05	1,834.23	18,365.89	38,954.17
640 Books and Periodicals	212.51	677.39		889.90
Total Supplies	\$18,966.56	\$2,511.62	\$18,365.89	\$39,844.07
Total 1241 Learning Support – Public	\$1,834,062.35	\$2,937,863.50	\$137,741.26	\$4,909,667.11

LEA : 123468503 Upper Moreland Township SD

Printed 12/14/2022 4:45:28 PM

General Fund (10)

1243 Gifted Support

	<u>Elementary</u>	<u>Secondary</u>	<u>Federal</u>	<u>Total</u>
100 <u>Personnel Services – Salaries</u>				
100 Personnel Services – Salaries	143,456.87	148,729.10		292,185.97
Total Personnel Services – Salaries	\$143,456.87	\$148,729.10		\$292,185.97
200 <u>Personnel Services – Employee Benefits</u>				
210 Group Insurance – Contracted Provider	160.26	151.54		311.80
220 Social Security Contributions	10,534.96	10,865.51		21,400.47
230 PSERS Retirement Contributions	49,548.48	51,506.43		101,054.91
250 Unemployment Compensation	1,434.82	1,487.08		2,921.90
260 Workers' Compensation	879.72	987.18		1,866.90
270 Group Insurance – Self-Insurance	33,127.11	40,025.83		73,152.94
Total Personnel Services – Employee Benefits	\$95,685.35	\$105,023.57		\$200,708.92
600 <u>Supplies</u>				
610 General Supplies	269.57	449.51		719.08
640 Books and Periodicals	450.82			450.82
Total Supplies	\$720.39	\$449.51		\$1,169.90
Total 1243 Gifted Support	\$239,862.61	\$254,202.18		\$494,064.79

LEA : 123468503 Upper Moreland Township SD

Printed 12/14/2022 4:45:28 PM

General Fund (10)

1260 Physical Support

	<u>Elementary</u>	<u>Secondary</u>	<u>Federal</u>	<u>Total</u>
600 <u>Supplies</u>				
610 General Supplies		556.36		556.36
Total Supplies		\$556.36		\$556.36
Total 1260 Physical Support		\$556.36		\$556.36

LEA : 123468503 Upper Moreland Township SD

Printed 12/14/2022 4:45:28 PM

General Fund (10)

1270 Multi-Handicapped Support

	<u>Elementary</u>	<u>Secondary</u>	<u>Federal</u>	<u>Total</u>
300 <u>Purchased Professional and Technical Services</u>				
322 Professional Educational Services – lus	154,609.23	93,083.80		247,693.03
330 Other Professional Services		55,525.45		55,525.45
Total Purchased Professional and Technical Services	\$154,609.23	\$148,609.25		\$303,218.48
Total 1270 Multi-Handicapped Support	\$154,609.23	\$148,609.25		\$303,218.48

LEA : 123468503 Upper Moreland Township SD

Printed 12/14/2022 4:45:28 PM

General Fund (10)

1280 Early Intervention Support	<u>Elementary</u>	<u>Secondary</u>	<u>Federal</u>	<u>Total</u>
300 <u>Purchased Professional and Technical Services</u>				
322 Professional Educational Services – lus	64,627.13			64,627.13
Total Purchased Professional and Technical Services	\$64,627.13			\$64,627.13
500 <u>Other Purchased Services</u>				
561 Tuition To Other School Districts Within the State	9,748.00			9,748.00
Total Other Purchased Services	\$9,748.00			\$9,748.00
Total 1280 Early Intervention Support	\$74,375.13			\$74,375.13

LEA : 123468503 Upper Moreland Township SD

Printed 12/14/2022 4:45:28 PM

General Fund (10)

1290 Special Programs - Other Support	<u>Elementary</u>	<u>Secondary</u>	<u>Federal</u>	<u>Total</u>
300 <u>Purchased Professional and Technical Services</u>				
330 Other Professional Services			342,833.26	342,833.26
Total Purchased Professional and Technical Services			\$342,833.26	\$342,833.26
500 <u>Other Purchased Services</u>				
567 Tuition To Approved Private Schools (APS) and PA Chartered Schools for the Deaf and Blind	146,236.28	292,472.54		438,708.82
594 IU Payment By Withholding for Institutionalized Children's Programs – Special Classes		878.58		878.58
Total Other Purchased Services	\$146,236.28	\$293,351.12		\$439,587.40
Total 1290 Special Programs - Other Support	\$146,236.28	\$293,351.12	\$342,833.26	\$782,420.66

LEA : 123468503 Upper Moreland Township SD

Printed 12/14/2022 4:45:28 PM

General Fund (10)

1300 Vocational Education

	<u>Elementary</u>	<u>Secondary</u>	<u>Federal</u>	<u>Total</u>
500 <u>Other Purchased Services</u>				
564 Tuition To Career and Technology Centers		1,384,927.00		1,384,927.00
Total Other Purchased Services		\$1,384,927.00		\$1,384,927.00
800 <u>Other Objects</u>				
890 Miscellaneous Expenditures		31,500.00		31,500.00
Total Other Objects		\$31,500.00		\$31,500.00
Total 1300 Vocational Education		\$1,416,427.00		\$1,416,427.00

LEA : 123468503 Upper Moreland Township SD

Printed 12/14/2022 4:45:28 PM

General Fund (10)

1500 Nonpublic School Programs	<u>Elementary</u>	<u>Secondary</u>	<u>Federal</u>	<u>Total</u>
300 <u>Purchased Professional and Technical Services</u>				
322 Professional Educational Services – lus			6,508.38	6,508.38
Total Purchased Professional and Technical Services			\$6,508.38	\$6,508.38
600 <u>Supplies</u>				
610 General Supplies			3,462.64	3,462.64
Total Supplies			\$3,462.64	\$3,462.64
Total 1500 Nonpublic School Programs			\$9,971.02	\$9,971.02

LEA : 123468503 Upper Moreland Township SD

Printed 12/14/2022 4:45:31 PM

General Fund (10)

2000 Support Services

Total

100	<u>Personnel Services – Salaries</u>	
100	Personnel Services – Salaries	9,730,181.47
Total Personnel Services – Salaries		\$9,730,181.47
200	<u>Personnel Services – Employee Benefits</u>	
210	Group Insurance – Contracted Provider	21,877.33
220	Social Security Contributions	710,742.00
230	PSERS Retirement Contributions	3,023,510.00
240	Tuition Reimbursement	110,140.71
250	Unemployment Compensation	96,168.18
260	Workers' Compensation	57,678.86
270	Group Insurance – Self-Insurance	1,425,414.40
299	All Other Employee Benefits	71,927.49
Total Personnel Services – Employee Benefits		\$5,517,458.97
300	<u>Purchased Professional and Technical Services</u>	
310	Official / Administrative Services	40,571.44
330	Other Professional Services	896,258.88
340	Technical Services	288,034.01
Total Purchased Professional and Technical Services		\$1,224,864.33
400	<u>Purchased Property Services</u>	
410	Cleaning Services	31,564.46
420	Utility Services	566,365.62
430	Repairs and Maintenance Services	508,758.23
440	Rentals	6,179.56
460	Extermination Services	6,737.50
Total Purchased Property Services		\$1,119,605.37
500	<u>Other Purchased Services</u>	
513	Contracted Carriers	9,829.14
516	Student Transportation Services From the IU	285,615.55
520	Insurance – General	59,056.60
521	Fire Insurance	110,191.00
522	Automotive Liability Insurance	227,297.40
530	Communications	89,784.07
549	Other Advertising/Public Relations	6,501.79
550	Printing and Binding	5,295.00
580	Travel	70,700.07
595	IU Payments By Withholding	39,493.07
599	Other Miscellaneous Purchased Services	4,935.87
Total Other Purchased Services		\$908,699.56
600	<u>Supplies</u>	
610	General Supplies	1,142,836.13
620	Energy	307,027.53
630	Food	1,080.49
640	Books and Periodicals	48,213.26

LEA : 123468503 Upper Moreland Township SD

Printed 12/14/2022 4:45:31 PM

General Fund (10)

2000 Support Services

Total

Total Supplies		\$1,499,157.41
700 <u>Property</u>		
762 Capitalized Equipment - Replacement		92,829.00
Total Property		\$92,829.00
800 <u>Other Objects</u>		
810 Dues and Fees		95,479.32
820 Claims and Judgments Against the LEA		10,213.38
890 Miscellaneous Expenditures		6,395.29
Total Other Objects		\$112,087.99
Total 2000 Support Services		\$20,204,884.10

LEA : 123468503 Upper Moreland Township SD

Printed 12/14/2022 4:45:31 PM

General Fund (10)

2100 Support Services – Students	Elementary	Secondary	Federal	Total
100 <u>Personnel Services – Salaries</u>				
100 Personnel Services – Salaries	505,115.56	687,437.70		1,225,426.06
Total Personnel Services – Salaries	\$505,115.56	\$687,437.70		\$1,225,426.06
200 <u>Personnel Services – Employee Benefits</u>				
210 Group Insurance – Contracted Provider	770.90	1,231.62		2,072.95
220 Social Security Contributions	37,704.17	50,590.90		90,728.65
230 PSERS Retirement Contributions	168,114.29	243,428.86		422,896.44
250 Unemployment Compensation	5,051.23	6,081.85		11,462.01
260 Workers' Compensation	3,309.41	4,362.55		7,869.58
270 Group Insurance – Self-Insurance	75,781.22	175,518.00		258,202.99
Total Personnel Services – Employee Benefits	\$290,731.22	\$481,213.78		\$793,232.62
300 <u>Purchased Professional and Technical Services</u>				
340 Technical Services	6,935.98	0.04		6,936.02
Total Purchased Professional and Technical Services	\$6,935.98	\$0.04		\$6,936.02
500 <u>Other Purchased Services</u>				
530 Communications		1,626.40		1,626.40
580 Travel	150.00	50.00		1,520.74
Total Other Purchased Services	\$150.00	\$1,676.40		\$3,147.14
600 <u>Supplies</u>				
610 General Supplies	7,888.01	10,787.59		18,675.60
640 Books and Periodicals	40.84	129.89		170.73
Total Supplies	\$7,928.85	\$10,917.48		\$18,846.33
800 <u>Other Objects</u>				
810 Dues and Fees		1,692.00		2,192.46
Total Other Objects		\$1,692.00		\$2,192.46
Total 2100 Support Services – Students	\$810,861.61	\$1,182,937.40		\$2,049,780.63

LEA : 123468503 Upper Moreland Township SD

Printed 12/14/2022 4:45:31 PM

General Fund (10)

2110 Supervision of Student Services	<u>Elementary</u>	<u>Secondary</u>	<u>Federal</u>	<u>Total</u>
300 <u>Purchased Professional and Technical Services</u>				
340 Technical Services	6,935.98			6,935.98
Total Purchased Professional and Technical Services	\$6,935.98			\$6,935.98
500 <u>Other Purchased Services</u>				
530 Communications		181.92		181.92
Total Other Purchased Services		\$181.92		\$181.92
Total 2110 Supervision of Student Services	\$6,935.98	\$181.92		\$7,117.90

LEA : 123468503 Upper Moreland Township SD

Printed 12/14/2022 4:45:31 PM

General Fund (10)

2111 Supervision of Student Services – Head of Component	<u>Elementary</u>	<u>Secondary</u>	<u>Federal</u>	<u>Total</u>
300 <u>Purchased Professional and Technical Services</u>				
340 Technical Services	6,935.98			6,935.98
Total Purchased Professional and Technical Services	\$6,935.98			\$6,935.98
500 <u>Other Purchased Services</u>				
530 Communications		181.92		181.92
Total Other Purchased Services		\$181.92		\$181.92
Total 2111 Supervision of Student Services – Head of Component	\$6,935.98	\$181.92		\$7,117.90

LEA : 123468503 Upper Moreland Township SD

Printed 12/14/2022 4:45:31 PM

General Fund (10)

2120 Guidance Services	Elementary	Secondary	Federal	Total
100 <u>Personnel Services – Salaries</u>				
100 Personnel Services – Salaries	344,096.95	580,864.16		924,961.11
Total Personnel Services – Salaries	\$344,096.95	\$580,864.16		\$924,961.11
200 <u>Personnel Services – Employee Benefits</u>				
210 Group Insurance – Contracted Provider	458.44	1,014.60		1,473.04
220 Social Security Contributions	25,933.86	42,548.42		68,482.28
230 PSERS Retirement Contributions	118,402.78	200,737.28		319,140.06
250 Unemployment Compensation	3,441.22	5,806.46		9,247.68
260 Workers' Compensation	2,281.79	3,657.82		5,939.61
270 Group Insurance – Self-Insurance	32,423.28	137,003.47		169,426.75
Total Personnel Services – Employee Benefits	\$182,941.37	\$390,768.05		\$573,709.42
300 <u>Purchased Professional and Technical Services</u>				
340 Technical Services		0.04		0.04
Total Purchased Professional and Technical Services		\$0.04		\$0.04
500 <u>Other Purchased Services</u>				
530 Communications		1,444.48		1,444.48
580 Travel		50.00		50.00
Total Other Purchased Services		\$1,494.48		\$1,494.48
600 <u>Supplies</u>				
610 General Supplies	385.43	6,902.90		7,288.33
640 Books and Periodicals	40.84	129.89		170.73
Total Supplies	\$426.27	\$7,032.79		\$7,459.06
800 <u>Other Objects</u>				
810 Dues and Fees		1,692.00		1,692.00
Total Other Objects		\$1,692.00		\$1,692.00
Total 2120 Guidance Services	\$527,464.59	\$981,851.52		\$1,509,316.11

LEA : 123468503 Upper Moreland Township SD

Printed 12/14/2022 4:45:31 PM

General Fund (10)

2140 Psychological Services	Elementary	Secondary	Federal	Total
100 <u>Personnel Services – Salaries</u>				
100 Personnel Services – Salaries	161,018.61	106,573.54		267,592.15
Total Personnel Services – Salaries	\$161,018.61	\$106,573.54		\$267,592.15
200 <u>Personnel Services – Employee Benefits</u>				
210 Group Insurance – Contracted Provider	312.46	217.02		529.48
220 Social Security Contributions	11,770.31	8,042.48		19,812.79
230 PSERS Retirement Contributions	49,711.51	42,691.58		92,403.09
250 Unemployment Compensation	1,610.01	275.39		1,885.40
260 Workers' Compensation	1,027.62	704.73		1,732.35
270 Group Insurance – Self-Insurance	43,357.94	38,514.53		81,872.47
Total Personnel Services – Employee Benefits	\$107,789.85	\$90,445.73		\$198,235.58
500 <u>Other Purchased Services</u>				
580 Travel	150.00			150.00
Total Other Purchased Services	\$150.00			\$150.00
600 <u>Supplies</u>				
610 General Supplies	7,502.58	3,884.69		11,387.27
Total Supplies	\$7,502.58	\$3,884.69		\$11,387.27
Total 2140 Psychological Services	\$276,461.04	\$200,903.96		\$477,365.00

LEA : 123468503 Upper Moreland Township SD

Printed 12/14/2022 4:45:31 PM

General Fund (10)

2170 Student Accounting Services

	<u>Elementary</u>	<u>Secondary</u>	<u>Federal</u>	<u>Total</u>
100 <u>Personnel Services – Salaries</u>				
100 Personnel Services – Salaries				32,872.80
Total Personnel Services – Salaries				\$32,872.80
200 <u>Personnel Services – Employee Benefits</u>				
210 Group Insurance – Contracted Provider				70.43
220 Social Security Contributions				2,433.58
230 PSERS Retirement Contributions				11,353.29
250 Unemployment Compensation				328.93
260 Workers' Compensation				197.62
270 Group Insurance – Self-Insurance				6,903.77
Total Personnel Services – Employee Benefits				\$21,287.62
500 <u>Other Purchased Services</u>				
580 Travel				1,320.74
Total Other Purchased Services				\$1,320.74
800 <u>Other Objects</u>				
810 Dues and Fees				500.46
Total Other Objects				\$500.46
Total 2170 Student Accounting Services				\$55,981.62

LEA : 123468503 Upper Moreland Township SD

Printed 12/14/2022 4:45:31 PM

General Fund (10)

2200 Support Services – Instructional Staff	Elementary	Secondary	Federal	Total
100 Personnel Services – Salaries				
100 Personnel Services – Salaries	365,016.08	393,118.86		758,134.94
Total Personnel Services – Salaries	\$365,016.08	\$393,118.86		\$758,134.94
200 Personnel Services – Employee Benefits				
210 Group Insurance – Contracted Provider	1,003.52	1,014.71		2,018.23
220 Social Security Contributions	26,205.34	28,437.42		54,642.76
230 PSERS Retirement Contributions	121,847.81	131,543.97		253,391.78
240 Tuition Reimbursement	37,249.88	72,890.83		110,140.71
250 Unemployment Compensation	3,643.66	3,939.60		7,583.26
260 Workers' Compensation	2,216.96	2,394.16		4,611.12
270 Group Insurance – Self-Insurance	52,131.38	53,546.05		105,677.43
299 All Other Employee Benefits	(35.41)	(106.22)		(141.63)
Total Personnel Services – Employee Benefits	\$244,263.14	\$293,660.52		\$537,923.66
300 Purchased Professional and Technical Services				
330 Other Professional Services	637.50	3,141.50	203,052.75	206,831.75
340 Technical Services	(0.01)	0.03		0.02
Total Purchased Professional and Technical Services	\$637.49	\$3,141.53	\$203,052.75	\$206,831.77
400 Purchased Property Services				
430 Repairs and Maintenance Services	15,232.41	147.00		15,379.41
Total Purchased Property Services	\$15,232.41	\$147.00		\$15,379.41
500 Other Purchased Services				
530 Communications		85.21		85.21
580 Travel	2,384.84	7,253.86	12,908.44	22,547.14
Total Other Purchased Services	\$2,384.84	\$7,339.07	\$12,908.44	\$22,632.35
600 Supplies				
610 General Supplies	43,573.65	24,031.92	19,910.36	87,515.93
640 Books and Periodicals	11,357.82	12,340.28		23,698.10
Total Supplies	\$54,931.47	\$36,372.20	\$19,910.36	\$111,214.03
800 Other Objects				
810 Dues and Fees	264.70	589.70		854.40
Total Other Objects	\$264.70	\$589.70		\$854.40
Total 2200 Support Services – Instructional Staff	\$682,730.13	\$734,368.88	\$235,871.55	\$1,652,970.56

LEA : 123468503 Upper Moreland Township SD

Printed 12/14/2022 4:45:31 PM

General Fund (10)

2220 Technology Support Services	Elementary	Secondary	Federal	Total
100 <u>Personnel Services – Salaries</u>				
100 Personnel Services – Salaries	18,030.56	18,030.56		36,061.12
Total Personnel Services – Salaries	\$18,030.56	\$18,030.56		\$36,061.12
200 <u>Personnel Services – Employee Benefits</u>				
210 Group Insurance – Contracted Provider	89.24	89.50		178.74
220 Social Security Contributions	1,335.46	1,335.46		2,670.92
230 PSERS Retirement Contributions	6,095.84	6,095.84		12,191.68
250 Unemployment Compensation	180.23	180.23		360.46
260 Workers' Compensation	104.31	104.31		208.62
270 Group Insurance – Self-Insurance	3,224.62	3,224.38		6,449.00
Total Personnel Services – Employee Benefits	\$11,029.70	\$11,029.72		\$22,059.42
300 <u>Purchased Professional and Technical Services</u>				
330 Other Professional Services			9,825.00	9,825.00
Total Purchased Professional and Technical Services			\$9,825.00	\$9,825.00
400 <u>Purchased Property Services</u>				
430 Repairs and Maintenance Services	2,335.36			2,335.36
Total Purchased Property Services	\$2,335.36			\$2,335.36
600 <u>Supplies</u>				
610 General Supplies	29,953.53			29,953.53
640 Books and Periodicals	2,585.61			2,585.61
Total Supplies	\$32,539.14			\$32,539.14
Total 2220 Technology Support Services	\$63,934.76	\$29,060.28	\$9,825.00	\$102,820.04

LEA : 123468503 Upper Moreland Township SD

Printed 12/14/2022 4:45:31 PM

General Fund (10)

2250 School Library Services	Elementary	Secondary	Federal	Total
100 Personnel Services – Salaries				
100 Personnel Services – Salaries	134,486.65	158,344.64		292,831.29
Total Personnel Services – Salaries	\$134,486.65	\$158,344.64		\$292,831.29
200 Personnel Services – Employee Benefits				
210 Group Insurance – Contracted Provider	198.90	209.82		408.72
220 Social Security Contributions	9,845.18	11,668.71		21,513.89
230 PSERS Retirement Contributions	46,571.35	54,826.89		101,398.24
250 Unemployment Compensation	1,344.89	1,583.75		2,928.64
260 Workers' Compensation	891.99	1,053.24		1,945.23
270 Group Insurance – Self-Insurance	31,376.41	32,790.50		64,166.91
Total Personnel Services – Employee Benefits	\$90,228.72	\$102,132.91		\$192,361.63
300 Purchased Professional and Technical Services				
340 Technical Services	(0.01)	0.03		0.02
Total Purchased Professional and Technical Services	(\$0.01)	\$0.03		\$0.02
400 Purchased Property Services				
430 Repairs and Maintenance Services		147.00		147.00
Total Purchased Property Services		\$147.00		\$147.00
600 Supplies				
610 General Supplies	4,794.18	8,339.74		13,133.92
640 Books and Periodicals	3,636.22	11,554.08		15,190.30
Total Supplies	\$8,430.40	\$19,893.82		\$28,324.22
Total 2250 School Library Services	\$233,145.76	\$280,518.40		\$513,664.16

LEA : 123468503 Upper Moreland Township SD

Printed 12/14/2022 4:45:31 PM

General Fund (10)

2260 Instruction and Curriculum Development Services

	<u>Elementary</u>	<u>Secondary</u>	<u>Federal</u>	<u>Total</u>
100 <u>Personnel Services – Salaries</u>				
100 Personnel Services – Salaries	107,050.91	111,295.93		218,346.84
Total Personnel Services – Salaries	\$107,050.91	\$111,295.93		\$218,346.84
200 <u>Personnel Services – Employee Benefits</u>				
210 Group Insurance – Contracted Provider	357.69	357.69		715.38
220 Social Security Contributions	7,593.03	7,906.27		15,499.30
230 PSERS Retirement Contributions	34,868.07	36,309.44		71,177.51
250 Unemployment Compensation	1,070.96	1,112.69		2,183.65
260 Workers' Compensation	615.78	632.03		1,247.81
270 Group Insurance – Self-Insurance	8,765.23	8,765.23		17,530.46
299 All Other Employee Benefits	(35.41)	(35.41)		(70.82)
Total Personnel Services – Employee Benefits	\$53,235.35	\$55,047.94		\$108,283.29
400 <u>Purchased Property Services</u>				
430 Repairs and Maintenance Services	12,897.05			12,897.05
Total Purchased Property Services	\$12,897.05			\$12,897.05
500 <u>Other Purchased Services</u>				
530 Communications		85.21		85.21
580 Travel	800.00	1,411.31		2,211.31
Total Other Purchased Services	\$800.00	\$1,496.52		\$2,296.52
800 <u>Other Objects</u>				
810 Dues and Fees	264.70	589.70		854.40
Total Other Objects	\$264.70	\$589.70		\$854.40
Total 2260 Instruction and Curriculum Development Services	\$174,248.01	\$168,430.09		\$342,678.10

LEA : 123468503 Upper Moreland Township SD

Printed 12/14/2022 4:45:31 PM

General Fund (10)

2270 Instructional Staff Professional Development Services	Elementary	Secondary	Federal	Total
100 Personnel Services – Salaries				
100 Personnel Services – Salaries	105,447.96	105,447.73		210,895.69
Total Personnel Services – Salaries	\$105,447.96	\$105,447.73		\$210,895.69
200 Personnel Services – Employee Benefits				
210 Group Insurance – Contracted Provider	357.69	357.70		715.39
220 Social Security Contributions	7,431.67	7,526.98		14,958.65
230 PSERS Retirement Contributions	34,312.55	34,311.80		68,624.35
240 Tuition Reimbursement	37,249.88	72,890.83		110,140.71
250 Unemployment Compensation	1,047.58	1,062.93		2,110.51
260 Workers' Compensation	604.88	604.58		1,209.46
270 Group Insurance – Self-Insurance	8,765.12	8,765.94		17,531.06
299 All Other Employee Benefits		(70.81)		(70.81)
Total Personnel Services – Employee Benefits	\$89,769.37	\$125,449.95		\$215,219.32
300 Purchased Professional and Technical Services				
330 Other Professional Services	637.50	3,141.50	193,227.75	197,006.75
Total Purchased Professional and Technical Services	\$637.50	\$3,141.50	\$193,227.75	\$197,006.75
500 Other Purchased Services				
580 Travel	1,584.84	5,842.55	12,908.44	20,335.83
Total Other Purchased Services	\$1,584.84	\$5,842.55	\$12,908.44	\$20,335.83
600 Supplies				
610 General Supplies	8,825.94	15,692.18	19,910.36	44,428.48
640 Books and Periodicals	5,135.99	786.20		5,922.19
Total Supplies	\$13,961.93	\$16,478.38	\$19,910.36	\$50,350.67
Total 2270 Instructional Staff Professional Development Services	\$211,401.60	\$256,360.11	\$226,046.55	\$693,808.26

LEA : 123468503 Upper Moreland Township SD

Printed 12/14/2022 4:45:31 PM

General Fund (10)

2300 Support Services – Administration	Elementary	Secondary	Federal	Total
100 Personnel Services – Salaries				
100 Personnel Services – Salaries	945,983.95	1,063,322.78		2,485,477.58
Total Personnel Services – Salaries	\$945,983.95	\$1,063,322.78		\$2,485,477.58
200 Personnel Services – Employee Benefits				
210 Group Insurance – Contracted Provider	3,045.37	3,218.99		7,703.09
220 Social Security Contributions	68,281.90	78,789.87		174,623.51
230 PSERS Retirement Contributions	265,704.94	354,753.40		734,478.97
250 Unemployment Compensation	9,453.17	10,675.01		24,890.99
260 Workers' Compensation	5,549.96	6,219.47		14,545.99
270 Group Insurance – Self-Insurance	117,205.46	161,126.21		345,312.90
299 All Other Employee Benefits				18,272.10
Total Personnel Services – Employee Benefits	\$469,240.80	\$614,782.95		\$1,319,827.55
300 Purchased Professional and Technical Services				
310 Official / Administrative Services				40,571.44
330 Other Professional Services		206.58		438,385.46
340 Technical Services		19,940.29		42,262.27
Total Purchased Professional and Technical Services		\$20,146.87		\$521,219.17
400 Purchased Property Services				
430 Repairs and Maintenance Services		493.47		493.47
440 Rentals		2,539.60		2,539.60
Total Purchased Property Services		\$3,033.07		\$3,033.07
500 Other Purchased Services				
520 Insurance – General				59,056.60
530 Communications	786.43	6,349.70		24,636.13
549 Other Advertising/Public Relations				4,163.07
550 Printing and Binding		1,693.00		5,295.00
580 Travel				1,435.50
Total Other Purchased Services	\$786.43	\$8,042.70		\$94,586.30
600 Supplies				
610 General Supplies	5,686.61	31,290.47		61,129.92
630 Food				1,080.49
640 Books and Periodicals		5,561.01		5,603.22
Total Supplies	\$5,686.61	\$36,851.48		\$67,813.63
800 Other Objects				
810 Dues and Fees		7,535.80		45,195.87
820 Claims and Judgments Against the LEA				10,213.38
Total Other Objects		\$7,535.80		\$55,409.25
Total 2300 Support Services – Administration	\$1,421,697.79	\$1,753,715.65		\$4,547,366.55

LEA : 123468503 Upper Moreland Township SD

Printed 12/14/2022 4:45:31 PM

General Fund (10)

2310 Board Services

	<u>Elementary</u>	<u>Secondary</u>	<u>Federal</u>	<u>Total</u>
100 <u>Personnel Services – Salaries</u>				
100 Personnel Services – Salaries				61,052.17
Total Personnel Services – Salaries				\$61,052.17
200 <u>Personnel Services – Employee Benefits</u>				
210 Group Insurance – Contracted Provider				149.66
220 Social Security Contributions				3,332.96
230 PSERS Retirement Contributions				18,423.28
250 Unemployment Compensation				610.48
260 Workers' Compensation				354.63
270 Group Insurance – Self-Insurance				5,244.99
299 All Other Employee Benefits				2,970.27
Total Personnel Services – Employee Benefits				\$31,086.27
300 <u>Purchased Professional and Technical Services</u>				
330 Other Professional Services				48,500.00
Total Purchased Professional and Technical Services				\$48,500.00
500 <u>Other Purchased Services</u>				
520 Insurance – General				30,475.60
530 Communications				17,500.00
549 Other Advertising/Public Relations				4,163.07
Total Other Purchased Services				\$52,138.67
600 <u>Supplies</u>				
610 General Supplies				5,970.80
Total Supplies				\$5,970.80
800 <u>Other Objects</u>				
810 Dues and Fees				20,991.42
Total Other Objects				\$20,991.42
Total 2310 Board Services				\$219,739.33

LEA : 123468503 Upper Moreland Township SD

Printed 12/14/2022 4:45:31 PM

General Fund (10)

2330 Tax Assessment and Collection Services	<u>Elementary</u>	<u>Secondary</u>	<u>Federal</u>	<u>Total</u>
100 <u>Personnel Services – Salaries</u>				
100 Personnel Services – Salaries				18,690.00
Total Personnel Services – Salaries				\$18,690.00
200 <u>Personnel Services – Employee Benefits</u>				
220 Social Security Contributions				1,429.84
250 Unemployment Compensation				186.90
260 Workers’ Compensation				112.14
Total Personnel Services – Employee Benefits				\$1,728.88
300 <u>Purchased Professional and Technical Services</u>				
310 Official / Administrative Services				40,571.44
Total Purchased Professional and Technical Services				\$40,571.44
500 <u>Other Purchased Services</u>				
520 Insurance – General				28,581.00
Total Other Purchased Services				\$28,581.00
600 <u>Supplies</u>				
610 General Supplies				4,307.66
Total Supplies				\$4,307.66
Total 2330 Tax Assessment and Collection Services				\$93,878.98

LEA : 123468503 Upper Moreland Township SD

Printed 12/14/2022 4:45:31 PM

General Fund (10)

2350 Legal and Accounting Services	<u>Elementary</u>	<u>Secondary</u>	<u>Federal</u>	<u>Total</u>
300 <u>Purchased Professional and Technical Services</u>				
330 Other Professional Services				271,718.38
Total Purchased Professional and Technical Services				\$271,718.38
800 <u>Other Objects</u>				
820 Claims and Judgments Against the LEA				10,213.38
Total Other Objects				\$10,213.38
Total 2350 Legal and Accounting Services				\$281,931.76

LEA : 123468503 Upper Moreland Township SD

Printed 12/14/2022 4:45:31 PM

General Fund (10)

2360 Office of the Superintendent / Executive Director Services	<u>Elementary</u>	<u>Secondary</u>	<u>Federal</u>	<u>Total</u>
100 <u>Personnel Services – Salaries</u>				
100 Personnel Services – Salaries				396,428.68
Total Personnel Services – Salaries				\$396,428.68
200 <u>Personnel Services – Employee Benefits</u>				
210 Group Insurance – Contracted Provider				1,289.07
220 Social Security Contributions				22,788.94
230 PSERS Retirement Contributions				95,597.35
250 Unemployment Compensation				3,965.43
260 Workers' Compensation				2,309.79
270 Group Insurance – Self-Insurance				61,736.24
299 All Other Employee Benefits				15,301.83
Total Personnel Services – Employee Benefits				\$202,988.65
300 <u>Purchased Professional and Technical Services</u>				
330 Other Professional Services				117,960.50
340 Technical Services				22,321.98
Total Purchased Professional and Technical Services				\$140,282.48
500 <u>Other Purchased Services</u>				
530 Communications	545.41			545.41
550 Printing and Binding				3,602.00
580 Travel				1,435.50
Total Other Purchased Services	\$545.41			\$5,582.91
600 <u>Supplies</u>				
610 General Supplies				13,874.38
630 Food				1,080.49
640 Books and Periodicals				42.21
Total Supplies				\$14,997.08
800 <u>Other Objects</u>				
810 Dues and Fees				16,668.65
Total Other Objects				\$16,668.65
Total 2360 Office of the Superintendent / Executive Director Services	\$545.41			\$776,948.45

LEA : 123468503 Upper Moreland Township SD

Printed 12/14/2022 4:45:31 PM

General Fund (10)

2380 Office of the Principal Services	Elementary	Secondary	Federal	Total
100 <u>Personnel Services – Salaries</u>				
100 Personnel Services – Salaries	945,983.95	1,063,322.78		2,009,306.73
Total Personnel Services – Salaries	\$945,983.95	\$1,063,322.78		\$2,009,306.73
200 <u>Personnel Services – Employee Benefits</u>				
210 Group Insurance – Contracted Provider	3,045.37	3,218.99		6,264.36
220 Social Security Contributions	68,281.90	78,789.87		147,071.77
230 PSERS Retirement Contributions	265,704.94	354,753.40		620,458.34
250 Unemployment Compensation	9,453.17	10,675.01		20,128.18
260 Workers' Compensation	5,549.96	6,219.47		11,769.43
270 Group Insurance – Self-Insurance	117,205.46	161,126.21		278,331.67
Total Personnel Services – Employee Benefits	\$469,240.80	\$614,782.95		\$1,084,023.75
300 <u>Purchased Professional and Technical Services</u>				
330 Other Professional Services		206.58		206.58
340 Technical Services		19,940.29		19,940.29
Total Purchased Professional and Technical Services		\$20,146.87		\$20,146.87
400 <u>Purchased Property Services</u>				
430 Repairs and Maintenance Services		493.47		493.47
440 Rentals		2,539.60		2,539.60
Total Purchased Property Services		\$3,033.07		\$3,033.07
500 <u>Other Purchased Services</u>				
530 Communications	241.02	6,349.70		6,590.72
550 Printing and Binding		1,693.00		1,693.00
Total Other Purchased Services	\$241.02	\$8,042.70		\$8,283.72
600 <u>Supplies</u>				
610 General Supplies	5,686.61	31,290.47		36,977.08
640 Books and Periodicals		5,561.01		5,561.01
Total Supplies	\$5,686.61	\$36,851.48		\$42,538.09
800 <u>Other Objects</u>				
810 Dues and Fees		7,535.80		7,535.80
Total Other Objects		\$7,535.80		\$7,535.80
Total 2380 Office of the Principal Services	\$1,421,152.38	\$1,753,715.65		\$3,174,868.03

LEA : 123468503 Upper Moreland Township SD

Printed 12/14/2022 4:45:31 PM

General Fund (10)

2400 Support Services – Pupil Health	<u>Elementary</u>	<u>Secondary</u>	<u>Federal</u>	<u>Total</u>
100 <u>Personnel Services – Salaries</u>				
100 Personnel Services – Salaries			3,710.88	316,800.58
Total Personnel Services – Salaries			\$3,710.88	\$316,800.58
200 <u>Personnel Services – Employee Benefits</u>				
210 Group Insurance – Contracted Provider				663.20
220 Social Security Contributions			283.89	22,485.55
230 PSERS Retirement Contributions			1,280.63	105,828.44
250 Unemployment Compensation			37.11	3,100.83
260 Workers' Compensation			22.27	1,958.93
270 Group Insurance – Self-Insurance				93,853.26
Total Personnel Services – Employee Benefits			\$1,623.90	\$227,890.21
500 <u>Other Purchased Services</u>				
580 Travel				445.76
Total Other Purchased Services				\$445.76
600 <u>Supplies</u>				
610 General Supplies				3,984.40
Total Supplies				\$3,984.40
Total 2400 Support Services – Pupil Health			\$5,334.78	\$549,120.95

LEA : 123468503 Upper Moreland Township SD

Printed 12/14/2022 4:45:31 PM

General Fund (10)

2440 Nursing Services

	<u>Elementary</u>	<u>Secondary</u>	<u>Federal</u>	<u>Total</u>
100 <u>Personnel Services – Salaries</u>				
100 Personnel Services – Salaries			3,710.88	284,886.75
Total Personnel Services – Salaries			\$3,710.88	\$284,886.75
200 <u>Personnel Services – Employee Benefits</u>				
210 Group Insurance – Contracted Provider				566.03
220 Social Security Contributions			283.89	20,367.61
230 PSERS Retirement Contributions			1,280.63	95,224.39
250 Unemployment Compensation			37.11	2,794.10
260 Workers' Compensation			22.27	1,770.72
270 Group Insurance – Self-Insurance				76,375.83
Total Personnel Services – Employee Benefits			\$1,623.90	\$197,098.68
500 <u>Other Purchased Services</u>				
580 Travel				445.76
Total Other Purchased Services				\$445.76
600 <u>Supplies</u>				
610 General Supplies				3,090.79
Total Supplies				\$3,090.79
Total 2440 Nursing Services			\$5,334.78	\$485,521.98

LEA : 123468503 Upper Moreland Township SD

Printed 12/14/2022 4:45:31 PM

General Fund (10)

2450 Nonpublic Health Services	<u>Elementary</u>	<u>Secondary</u>	<u>Federal</u>	<u>Total</u>
100 <u>Personnel Services – Salaries</u>				
100 Personnel Services – Salaries				31,913.83
Total Personnel Services – Salaries				\$31,913.83
200 <u>Personnel Services – Employee Benefits</u>				
210 Group Insurance – Contracted Provider				97.17
220 Social Security Contributions				2,117.94
230 PSERS Retirement Contributions				10,604.05
250 Unemployment Compensation				306.73
260 Workers' Compensation				188.21
270 Group Insurance – Self-Insurance				17,477.43
Total Personnel Services – Employee Benefits				\$30,791.53
600 <u>Supplies</u>				
610 General Supplies				893.61
Total Supplies				\$893.61
Total 2450 Nonpublic Health Services				\$63,598.97

LEA : 123468503 Upper Moreland Township SD

Printed 12/14/2022 4:45:31 PM

General Fund (10)

2500 Support Services – Business

	<u>Elementary</u>	<u>Secondary</u>	<u>Federal</u>	<u>Total</u>
100 <u>Personnel Services – Salaries</u>				
100 Personnel Services – Salaries				559,449.38
Total Personnel Services – Salaries				\$559,449.38
200 <u>Personnel Services – Employee Benefits</u>				
210 Group Insurance – Contracted Provider				1,417.62
220 Social Security Contributions				38,985.98
230 PSERS Retirement Contributions				160,377.85
250 Unemployment Compensation				5,497.71
260 Workers' Compensation				3,260.66
270 Group Insurance – Self-Insurance				83,477.80
299 All Other Employee Benefits				5,838.93
Total Personnel Services – Employee Benefits				\$298,856.55
300 <u>Purchased Professional and Technical Services</u>				
330 Other Professional Services				103,847.01
340 Technical Services				49,150.11
Total Purchased Professional and Technical Services				\$152,997.12
400 <u>Purchased Property Services</u>				
430 Repairs and Maintenance Services				631.00
Total Purchased Property Services				\$631.00
500 <u>Other Purchased Services</u>				
530 Communications				3,246.73
549 Other Advertising/Public Relations				639.72
580 Travel				29,131.10
599 Other Miscellaneous Purchased Services				4,935.87
Total Other Purchased Services				\$37,953.42
600 <u>Supplies</u>				
610 General Supplies				34,547.39
Total Supplies				\$34,547.39
800 <u>Other Objects</u>				
810 Dues and Fees				24,679.11
890 Miscellaneous Expenditures				6,395.29
Total Other Objects				\$31,074.40
Total 2500 Support Services – Business				\$1,115,509.26

LEA : 123468503 Upper Moreland Township SD

Printed 12/14/2022 4:45:31 PM

General Fund (10)

2510 Fiscal Services

	<u>Elementary</u>	<u>Secondary</u>	<u>Federal</u>	<u>Total</u>
100 <u>Personnel Services – Salaries</u>				
100 Personnel Services – Salaries				545,152.95
Total Personnel Services – Salaries				\$545,152.95
200 <u>Personnel Services – Employee Benefits</u>				
210 Group Insurance – Contracted Provider				1,408.50
220 Social Security Contributions				37,885.53
230 PSERS Retirement Contributions				155,334.26
250 Unemployment Compensation				5,496.56
260 Workers' Compensation				3,175.33
270 Group Insurance – Self-Insurance				81,934.63
299 All Other Employee Benefits				5,838.93
Total Personnel Services – Employee Benefits				\$291,073.74
300 <u>Purchased Professional and Technical Services</u>				
330 Other Professional Services				103,847.01
340 Technical Services				49,150.11
Total Purchased Professional and Technical Services				\$152,997.12
400 <u>Purchased Property Services</u>				
430 Repairs and Maintenance Services				631.00
Total Purchased Property Services				\$631.00
500 <u>Other Purchased Services</u>				
530 Communications				3,246.73
549 Other Advertising/Public Relations				639.72
580 Travel				29,131.10
599 Other Miscellaneous Purchased Services				4,935.87
Total Other Purchased Services				\$37,953.42
600 <u>Supplies</u>				
610 General Supplies				34,422.83
Total Supplies				\$34,422.83
800 <u>Other Objects</u>				
810 Dues and Fees				24,679.11
890 Miscellaneous Expenditures				6,395.29
Total Other Objects				\$31,074.40
Total 2510 Fiscal Services				\$1,093,305.46

LEA : 123468503 Upper Moreland Township SD

Printed 12/14/2022 4:45:31 PM

General Fund (10)

2511 Supervision of Fiscal Services - Head of Component	<u>Elementary</u>	<u>Secondary</u>	<u>Federal</u>	<u>Total</u>
100 <u>Personnel Services – Salaries</u>				
100 Personnel Services – Salaries				230,332.51
Total Personnel Services – Salaries				\$230,332.51
200 <u>Personnel Services – Employee Benefits</u>				
210 Group Insurance – Contracted Provider				1,116.98
220 Social Security Contributions				14,881.30
230 PSERS Retirement Contributions				72,697.77
250 Unemployment Compensation				2,348.35
260 Workers' Compensation				1,334.07
270 Group Insurance – Self-Insurance				36,761.35
299 All Other Employee Benefits				5,838.93
Total Personnel Services – Employee Benefits				\$134,978.75
300 <u>Purchased Professional and Technical Services</u>				
330 Other Professional Services				103,847.01
340 Technical Services				49,150.11
Total Purchased Professional and Technical Services				\$152,997.12
400 <u>Purchased Property Services</u>				
430 Repairs and Maintenance Services				631.00
Total Purchased Property Services				\$631.00
500 <u>Other Purchased Services</u>				
530 Communications				3,246.73
549 Other Advertising/Public Relations				639.72
580 Travel				29,131.10
599 Other Miscellaneous Purchased Services				4,935.87
Total Other Purchased Services				\$37,953.42
600 <u>Supplies</u>				
610 General Supplies				34,422.83
Total Supplies				\$34,422.83
800 <u>Other Objects</u>				
810 Dues and Fees				11,066.42
890 Miscellaneous Expenditures				6,395.29
Total Other Objects				\$17,461.71
Total 2511 Supervision of Fiscal Services - Head of Component				\$608,777.34

LEA : 123468503 Upper Moreland Township SD

Printed 12/14/2022 4:45:31 PM

General Fund (10)

2512 Budgeting Services

	<u>Elementary</u>	<u>Secondary</u>	<u>Federal</u>	<u>Total</u>
100 <u>Personnel Services – Salaries</u>				
100 Personnel Services – Salaries				81,517.66
Total Personnel Services – Salaries				\$81,517.66
200 <u>Personnel Services – Employee Benefits</u>				
210 Group Insurance – Contracted Provider				27.65
220 Social Security Contributions				5,802.87
230 PSERS Retirement Contributions				17,994.60
250 Unemployment Compensation				815.18
260 Workers' Compensation				477.07
270 Group Insurance – Self-Insurance				695.53
Total Personnel Services – Employee Benefits				\$25,812.90
Total 2512 Budgeting Services				\$107,330.56

LEA : 123468503 Upper Moreland Township SD

Printed 12/14/2022 4:45:31 PM

General Fund (10)

2513 Receiving and Disbursing Funds Services	<u>Elementary</u>	<u>Secondary</u>	<u>Federal</u>	<u>Total</u>
100 <u>Personnel Services – Salaries</u>				
100 Personnel Services – Salaries				9,517.93
Total Personnel Services – Salaries				\$9,517.93
200 <u>Personnel Services – Employee Benefits</u>				
210 Group Insurance – Contracted Provider				22.20
220 Social Security Contributions				725.65
230 PSERS Retirement Contributions				1,110.03
250 Unemployment Compensation				95.18
260 Workers' Compensation				49.15
270 Group Insurance – Self-Insurance				348.81
Total Personnel Services – Employee Benefits				\$2,351.02
Total 2513 Receiving and Disbursing Funds Services				\$11,868.95

LEA : 123468503 Upper Moreland Township SD

Printed 12/14/2022 4:45:31 PM

General Fund (10)

2514 Payroll Services

	<u>Elementary</u>	<u>Secondary</u>	<u>Federal</u>	<u>Total</u>
100 <u>Personnel Services – Salaries</u>				
100 Personnel Services – Salaries				194,646.06
Total Personnel Services – Salaries				\$194,646.06
200 <u>Personnel Services – Employee Benefits</u>				
210 Group Insurance – Contracted Provider				186.37
220 Social Security Contributions				14,281.95
230 PSERS Retirement Contributions				58,458.22
250 Unemployment Compensation				1,946.47
260 Workers' Compensation				1,160.20
270 Group Insurance – Self-Insurance				41,120.80
Total Personnel Services – Employee Benefits				\$117,154.01
Total 2514 Payroll Services				\$311,800.07

LEA : 123468503 Upper Moreland Township SD

Printed 12/14/2022 4:45:31 PM

General Fund (10)

2515 Financial Accounting Services	<u>Elementary</u>	<u>Secondary</u>	<u>Federal</u>	<u>Total</u>
100 <u>Personnel Services – Salaries</u>				
100 Personnel Services – Salaries				19,620.92
Total Personnel Services – Salaries				\$19,620.92
200 <u>Personnel Services – Employee Benefits</u>				
210 Group Insurance – Contracted Provider				33.10
220 Social Security Contributions				1,468.14
230 PSERS Retirement Contributions				3,963.64
250 Unemployment Compensation				196.20
260 Workers' Compensation				105.68
270 Group Insurance – Self-Insurance				2,659.31
Total Personnel Services – Employee Benefits				\$8,426.07
Total 2515 Financial Accounting Services				\$28,046.99

LEA : 123468503 Upper Moreland Township SD

Printed 12/14/2022 4:45:31 PM

General Fund (10)

2516 Internal Auditing Services	<u>Elementary</u>	<u>Secondary</u>	<u>Federal</u>	<u>Total</u>
100 <u>Personnel Services – Salaries</u>				
100 Personnel Services – Salaries				9,517.87
Total Personnel Services – Salaries				\$9,517.87
200 <u>Personnel Services – Employee Benefits</u>				
210 Group Insurance – Contracted Provider				22.20
220 Social Security Contributions				725.62
230 PSERS Retirement Contributions				1,110.00
250 Unemployment Compensation				95.18
260 Workers' Compensation				49.16
270 Group Insurance – Self-Insurance				348.83
Total Personnel Services – Employee Benefits				\$2,350.99
Total 2516 Internal Auditing Services				\$11,868.86

Total

13,612.69

\$13,612.69

\$13,612.69

LEA : 123468503 Upper Moreland Township SD

Printed 12/14/2022 4:45:31 PM

General Fund (10)

2530 Warehousing and Distributing Services	<u>Elementary</u>	<u>Secondary</u>	<u>Federal</u>	<u>Total</u>
100 <u>Personnel Services – Salaries</u>				
100 Personnel Services – Salaries				14,296.43
Total Personnel Services – Salaries				\$14,296.43
200 <u>Personnel Services – Employee Benefits</u>				
210 Group Insurance – Contracted Provider				9.12
220 Social Security Contributions				1,100.45
230 PSERS Retirement Contributions				5,043.59
250 Unemployment Compensation				1.15
260 Workers' Compensation				85.33
270 Group Insurance – Self-Insurance				1,543.17
Total Personnel Services – Employee Benefits				\$7,782.81
600 <u>Supplies</u>				
610 General Supplies				124.56
Total Supplies				\$124.56
Total 2530 Warehousing and Distributing Services				\$22,203.80

LEA : 123468503 Upper Moreland Township SD

Printed 12/14/2022 4:45:31 PM

General Fund (10)

2600 Operation and Maintenance of Plant Services	<u>Elementary</u>	<u>Secondary</u>	<u>Federal</u>	<u>Total</u>
100 <u>Personnel Services – Salaries</u>				
100 Personnel Services – Salaries				1,754,016.75
Total Personnel Services – Salaries				\$1,754,016.75
200 <u>Personnel Services – Employee Benefits</u>				
210 Group Insurance – Contracted Provider				2,953.80
220 Social Security Contributions				129,722.16
230 PSERS Retirement Contributions				582,862.30
250 Unemployment Compensation				17,567.78
260 Workers' Compensation				10,088.16
270 Group Insurance – Self-Insurance				357,787.96
299 All Other Employee Benefits				5,689.38
Total Personnel Services – Employee Benefits				\$1,106,671.54
300 <u>Purchased Professional and Technical Services</u>				
330 Other Professional Services				17,503.44
340 Technical Services				6,395.98
Total Purchased Professional and Technical Services				\$23,899.42
400 <u>Purchased Property Services</u>				
410 Cleaning Services				31,564.46
420 Utility Services				566,365.62
430 Repairs and Maintenance Services				465,340.99
440 Rentals			1,559.22	1,559.22
460 Extermination Services				6,737.50
Total Purchased Property Services			\$1,559.22	\$1,071,567.79
500 <u>Other Purchased Services</u>				
521 Fire Insurance				110,191.00
522 Automotive Liability Insurance				97,929.99
530 Communications				50,315.14
580 Travel				3,487.14
Total Other Purchased Services				\$261,923.27
600 <u>Supplies</u>				
610 General Supplies	284,336.51		8,639.99	292,976.50
620 Energy				172,600.11
Total Supplies	\$284,336.51		\$8,639.99	\$465,576.61
800 <u>Other Objects</u>				
810 Dues and Fees				17,884.00
Total Other Objects				\$17,884.00
Total 2600 Operation and Maintenance of Plant Services	\$284,336.51		\$10,199.21	\$4,701,539.38

LEA : 123468503 Upper Moreland Township SD

Printed 12/14/2022 4:45:31 PM

General Fund (10)

2610 Supervision of Operation and Maintenance of Plant Services	<u>Elementary</u>	<u>Secondary</u>	<u>Federal</u>	<u>Total</u>
100 <u>Personnel Services – Salaries</u>				
100 Personnel Services – Salaries				525,192.30
Total Personnel Services – Salaries				\$525,192.30
200 <u>Personnel Services – Employee Benefits</u>				
210 Group Insurance – Contracted Provider				1,306.72
220 Social Security Contributions				38,519.04
230 PSERS Retirement Contributions				179,527.07
250 Unemployment Compensation				5,248.21
260 Workers' Compensation				3,012.05
270 Group Insurance – Self-Insurance				117,680.44
Total Personnel Services – Employee Benefits				\$345,293.53
Total 2610 Supervision of Operation and Maintenance of Plant Services				\$870,485.83

LEA : 123468503 Upper Moreland Township SD

Printed 12/14/2022 4:45:31 PM

General Fund (10)

2611 Supervision of Operation and Maintenance of Plant Services – Head of Component	<u>Elementary</u>	<u>Secondary</u>	<u>Federal</u>	<u>Total</u>
100 <u>Personnel Services – Salaries</u>				
100 Personnel Services – Salaries				284,827.55
Total Personnel Services – Salaries				\$284,827.55
200 <u>Personnel Services – Employee Benefits</u>				
210 Group Insurance – Contracted Provider				292.80
220 Social Security Contributions				20,715.80
230 PSERS Retirement Contributions				98,360.01
250 Unemployment Compensation				2,844.52
260 Workers' Compensation				1,613.03
270 Group Insurance – Self-Insurance				65,029.75
Total Personnel Services – Employee Benefits				\$188,855.91
Total 2611 Supervision of Operation and Maintenance of Plant Services – Head of Component				\$473,683.46

LEA : 123468503 Upper Moreland Township SD

Printed 12/14/2022 4:45:31 PM

General Fund (10)

2619 Supervision of Operation and Maintenance of Plant Services – All Other Supervision	<u>Elementary</u>	<u>Secondary</u>	<u>Federal</u>	<u>Total</u>
100 <u>Personnel Services – Salaries</u>				
100 Personnel Services – Salaries				240,364.75
Total Personnel Services – Salaries				\$240,364.75
200 <u>Personnel Services – Employee Benefits</u>				
210 Group Insurance – Contracted Provider				1,013.92
220 Social Security Contributions				17,803.24
230 PSERS Retirement Contributions				81,167.06
250 Unemployment Compensation				2,403.69
260 Workers' Compensation				1,399.02
270 Group Insurance – Self-Insurance				52,650.69
Total Personnel Services – Employee Benefits				\$156,437.62
Total 2619 Supervision of Operation and Maintenance of Plant Services – All Other Supervision				\$396,802.37

LEA : 123468503 Upper Moreland Township SD

Printed 12/14/2022 4:45:31 PM

General Fund (10)				
2620 Operation of Buildings Services	<u>Elementary</u>	<u>Secondary</u>	<u>Federal</u>	<u>Total</u>
100 <u>Personnel Services – Salaries</u>				
100 Personnel Services – Salaries				1,084,140.46
Total Personnel Services – Salaries				\$1,084,140.46
200 <u>Personnel Services – Employee Benefits</u>				
210 Group Insurance – Contracted Provider				1,464.68
220 Social Security Contributions				80,360.95
230 PSERS Retirement Contributions				354,700.15
250 Unemployment Compensation				10,875.13
260 Workers' Compensation				6,251.33
270 Group Insurance – Self-Insurance				221,771.78
299 All Other Employee Benefits				5,689.38
Total Personnel Services – Employee Benefits				\$681,113.40
300 <u>Purchased Professional and Technical Services</u>				
330 Other Professional Services				17,503.44
340 Technical Services				6,395.98
Total Purchased Professional and Technical Services				\$23,899.42
400 <u>Purchased Property Services</u>				
410 Cleaning Services				31,564.46
420 Utility Services				566,365.62
430 Repairs and Maintenance Services				382,762.18
440 Rentals			1,559.22	1,559.22
460 Extermination Services				6,737.50
Total Purchased Property Services			\$1,559.22	\$988,988.98
500 <u>Other Purchased Services</u>				
530 Communications				50,315.14
580 Travel				3,487.14
Total Other Purchased Services				\$53,802.28
600 <u>Supplies</u>				
610 General Supplies	234,679.10		8,639.99	243,319.09
620 Energy				172,600.11
Total Supplies	\$234,679.10		\$8,639.99	\$415,919.20
800 <u>Other Objects</u>				
810 Dues and Fees				10,264.00
Total Other Objects				\$10,264.00
Total 2620 Operation of Buildings Services	\$234,679.10		\$10,199.21	\$3,258,127.74

LEA : 123468503 Upper Moreland Township SD

Printed 12/14/2022 4:45:31 PM

General Fund (10)

2630 Care and Upkeep of Grounds Services	<u>Elementary</u>	<u>Secondary</u>	<u>Federal</u>	<u>Total</u>
100 <u>Personnel Services – Salaries</u>				
100 Personnel Services – Salaries				144,683.99
Total Personnel Services – Salaries				\$144,683.99
200 <u>Personnel Services – Employee Benefits</u>				
210 Group Insurance – Contracted Provider				182.40
220 Social Security Contributions				10,842.17
230 PSERS Retirement Contributions				48,635.08
250 Unemployment Compensation				1,444.44
260 Workers' Compensation				824.78
270 Group Insurance – Self-Insurance				18,335.74
Total Personnel Services – Employee Benefits				\$80,264.61
400 <u>Purchased Property Services</u>				
430 Repairs and Maintenance Services				82,578.81
Total Purchased Property Services				\$82,578.81
600 <u>Supplies</u>				
610 General Supplies	49,657.41			49,657.41
Total Supplies	\$49,657.41			\$49,657.41
800 <u>Other Objects</u>				
810 Dues and Fees				7,620.00
Total Other Objects				\$7,620.00
Total 2630 Care and Upkeep of Grounds Services	\$49,657.41			\$364,804.82

LEA : 123468503 Upper Moreland Township SD

Printed 12/14/2022 4:45:31 PM

General Fund (10)

2690 Other Operation and Maintenance of Plant Services	<u>Elementary</u>	<u>Secondary</u>	<u>Federal</u>	<u>Total</u>
500 <u>Other Purchased Services</u>				
521 Fire Insurance				110,191.00
522 Automotive Liability Insurance				97,929.99
Total Other Purchased Services				\$208,120.99
Total 2690 Other Operation and Maintenance of Plant Services				\$208,120.99

LEA : 123468503 Upper Moreland Township SD

Printed 12/14/2022 4:45:31 PM

General Fund (10)

2700 Student Transportation Services	Elementary	Secondary	Federal	Total
100 <u>Personnel Services – Salaries</u>				
100 Personnel Services – Salaries				1,770,087.11
Total Personnel Services – Salaries				\$1,770,087.11
200 <u>Personnel Services – Employee Benefits</u>				
210 Group Insurance – Contracted Provider				2,626.17
220 Social Security Contributions				135,180.97
230 PSERS Retirement Contributions				517,300.10
250 Unemployment Compensation				17,447.96
260 Workers' Compensation				10,346.24
270 Group Insurance – Self-Insurance				60,416.73
299 All Other Employee Benefits				42,424.98
Total Personnel Services – Employee Benefits				\$785,743.15
300 <u>Purchased Professional and Technical Services</u>				
330 Other Professional Services				10,691.22
340 Technical Services				34,632.68
Total Purchased Professional and Technical Services				\$45,323.90
400 <u>Purchased Property Services</u>				
430 Repairs and Maintenance Services				26,913.36
440 Rentals				2,080.74
Total Purchased Property Services				\$28,994.10
500 <u>Other Purchased Services</u>				
513 Contracted Carriers				9,829.14
516 Student Transportation Services From the IU				285,615.55
522 Automotive Liability Insurance				129,367.41
530 Communications				244.91
580 Travel			275.17	10,128.76
Total Other Purchased Services			\$275.17	\$435,185.77
600 <u>Supplies</u>				
610 General Supplies				114,617.51
620 Energy				134,427.42
Total Supplies				\$249,044.93
700 <u>Property</u>				
762 Capitalized Equipment - Replacement				92,829.00
Total Property				\$92,829.00
800 <u>Other Objects</u>				
810 Dues and Fees				937.50
Total Other Objects				\$937.50
Total 2700 Student Transportation Services			\$275.17	\$3,408,145.46

LEA : 123468503 Upper Moreland Township SD

Printed 12/14/2022 4:45:31 PM

General Fund (10)

2710 Supervision of Student Transportation Services	<u>Elementary</u>	<u>Secondary</u>	<u>Federal</u>	<u>Total</u>
100 <u>Personnel Services – Salaries</u>				
100 Personnel Services – Salaries				237,777.98
Total Personnel Services – Salaries				\$237,777.98
200 <u>Personnel Services – Employee Benefits</u>				
210 Group Insurance – Contracted Provider				741.80
220 Social Security Contributions				17,650.44
230 PSERS Retirement Contributions				75,451.69
250 Unemployment Compensation				1,827.68
260 Workers' Compensation				1,396.65
270 Group Insurance – Self-Insurance				48,097.39
Total Personnel Services – Employee Benefits				\$145,165.65
300 <u>Purchased Professional and Technical Services</u>				
330 Other Professional Services				250.00
340 Technical Services				34,632.68
Total Purchased Professional and Technical Services				\$34,882.68
400 <u>Purchased Property Services</u>				
430 Repairs and Maintenance Services				24,192.22
440 Rentals				2,080.74
Total Purchased Property Services				\$26,272.96
500 <u>Other Purchased Services</u>				
522 Automotive Liability Insurance				63,856.50
580 Travel				990.84
Total Other Purchased Services				\$64,847.34
600 <u>Supplies</u>				
610 General Supplies				5,086.16
Total Supplies				\$5,086.16
800 <u>Other Objects</u>				
810 Dues and Fees				328.50
Total Other Objects				\$328.50
Total 2710 Supervision of Student Transportation Services				\$514,361.27

LEA : 123468503 Upper Moreland Township SD

Printed 12/14/2022 4:45:31 PM

General Fund (10)				
2711 Supervision of Student Transportation Services – Head of Component	<u>Elementary</u>	<u>Secondary</u>	<u>Federal</u>	<u>Total</u>
100 <u>Personnel Services – Salaries</u>				
100 Personnel Services – Salaries				237,777.98
Total Personnel Services – Salaries				\$237,777.98
200 <u>Personnel Services – Employee Benefits</u>				
210 Group Insurance – Contracted Provider				741.80
220 Social Security Contributions				17,650.44
230 PSERS Retirement Contributions				75,451.69
250 Unemployment Compensation				1,827.68
260 Workers' Compensation				1,396.65
270 Group Insurance – Self-Insurance				48,097.39
Total Personnel Services – Employee Benefits				\$145,165.65
300 <u>Purchased Professional and Technical Services</u>				
330 Other Professional Services				250.00
340 Technical Services				34,632.68
Total Purchased Professional and Technical Services				\$34,882.68
400 <u>Purchased Property Services</u>				
430 Repairs and Maintenance Services				24,192.22
440 Rentals				2,080.74
Total Purchased Property Services				\$26,272.96
500 <u>Other Purchased Services</u>				
522 Automotive Liability Insurance				63,856.50
580 Travel				990.84
Total Other Purchased Services				\$64,847.34
600 <u>Supplies</u>				
610 General Supplies				5,086.16
Total Supplies				\$5,086.16
800 <u>Other Objects</u>				
810 Dues and Fees				328.50
Total Other Objects				\$328.50
Total 2711 Supervision of Student Transportation Services – Head of Component				\$514,361.27

LEA : 123468503 Upper Moreland Township SD

Printed 12/14/2022 4:45:31 PM

General Fund (10)

2720 Vehicle Operation Services

	<u>Elementary</u>	<u>Secondary</u>	<u>Federal</u>	<u>Total</u>
100 <u>Personnel Services – Salaries</u>				
100 Personnel Services – Salaries				965,859.27
Total Personnel Services – Salaries				\$965,859.27
200 <u>Personnel Services – Employee Benefits</u>				
210 Group Insurance – Contracted Provider				1,183.72
220 Social Security Contributions				74,124.13
230 PSERS Retirement Contributions				275,308.25
250 Unemployment Compensation				9,875.28
260 Workers' Compensation				5,652.21
270 Group Insurance – Self-Insurance				7,961.93
299 All Other Employee Benefits				29,695.59
Total Personnel Services – Employee Benefits				\$403,801.11
300 <u>Purchased Professional and Technical Services</u>				
330 Other Professional Services				7,818.16
Total Purchased Professional and Technical Services				\$7,818.16
500 <u>Other Purchased Services</u>				
513 Contracted Carriers				6,880.41
516 Student Transportation Services From the IU				142,409.12
580 Travel			275.17	9,038.18
Total Other Purchased Services			\$275.17	\$158,327.71
600 <u>Supplies</u>				
610 General Supplies				2,623.00
620 Energy				94,142.93
Total Supplies				\$96,765.93
700 <u>Property</u>				
762 Capitalized Equipment - Replacement				64,980.30
Total Property				\$64,980.30
800 <u>Other Objects</u>				
810 Dues and Fees				594.00
Total Other Objects				\$594.00
Total 2720 Vehicle Operation Services			\$275.17	\$1,698,146.48

LEA : 123468503 Upper Moreland Township SD

Printed 12/14/2022 4:45:31 PM

General Fund (10)

2730 Monitoring Services

Elementary Secondary Federal Total

100 <u>Personnel Services – Salaries</u>				
100 Personnel Services – Salaries				30,361.43
Total Personnel Services – Salaries				\$30,361.43
200 <u>Personnel Services – Employee Benefits</u>				
210 Group Insurance – Contracted Provider				72.64
220 Social Security Contributions				2,297.94
230 PSERS Retirement Contributions				5,301.04
250 Unemployment Compensation				301.97
260 Workers' Compensation				175.91
270 Group Insurance – Self-Insurance				916.61
Total Personnel Services – Employee Benefits				\$9,066.11
Total 2730 Monitoring Services				\$39,427.54

LEA : 123468503 Upper Moreland Township SD

Printed 12/14/2022 4:45:31 PM

General Fund (10)

2740 Vehicle Servicing and Maintenance Services

Elementary Secondary Federal Total

100 <u>Personnel Services – Salaries</u>				
100 Personnel Services – Salaries				128,628.93
Total Personnel Services – Salaries				\$128,628.93
200 <u>Personnel Services – Employee Benefits</u>				
210 Group Insurance – Contracted Provider				124.80
220 Social Security Contributions				9,834.35
230 PSERS Retirement Contributions				43,249.38
250 Unemployment Compensation				1,275.09
260 Workers' Compensation				732.08
270 Group Insurance – Self-Insurance				27.36
Total Personnel Services – Employee Benefits				\$55,243.06
400 <u>Purchased Property Services</u>				
430 Repairs and Maintenance Services				2,187.44
Total Purchased Property Services				\$2,187.44
500 <u>Other Purchased Services</u>				
580 Travel				69.82
Total Other Purchased Services				\$69.82
600 <u>Supplies</u>				
610 General Supplies				60,352.05
Total Supplies				\$60,352.05
Total 2740 Vehicle Servicing and Maintenance Services				\$246,481.30

LEA : 123468503 Upper Moreland Township SD

Printed 12/14/2022 4:45:31 PM

General Fund (10)

2750 Nonpublic Transportation

Elementary Secondary Federal Total

100 <u>Personnel Services – Salaries</u>			
100 Personnel Services – Salaries			407,459.50
Total Personnel Services – Salaries			\$407,459.50
200 <u>Personnel Services – Employee Benefits</u>			
210 Group Insurance – Contracted Provider			503.21
220 Social Security Contributions			31,274.11
230 PSERS Retirement Contributions			117,989.74
250 Unemployment Compensation			4,167.94
260 Workers' Compensation			2,389.39
270 Group Insurance – Self-Insurance			3,413.44
299 All Other Employee Benefits			12,729.39
Total Personnel Services – Employee Benefits			\$172,467.22
300 <u>Purchased Professional and Technical Services</u>			
330 Other Professional Services			2,623.06
Total Purchased Professional and Technical Services			\$2,623.06
400 <u>Purchased Property Services</u>			
430 Repairs and Maintenance Services			533.70
Total Purchased Property Services			\$533.70
500 <u>Other Purchased Services</u>			
513 Contracted Carriers			2,948.73
516 Student Transportation Services From the IU			143,206.43
522 Automotive Liability Insurance			65,510.91
530 Communications			244.91
580 Travel			29.92
Total Other Purchased Services			\$211,940.90
600 <u>Supplies</u>			
610 General Supplies			46,556.30
620 Energy			40,284.49
Total Supplies			\$86,840.79
700 <u>Property</u>			
762 Capitalized Equipment - Replacement			27,848.70
Total Property			\$27,848.70
800 <u>Other Objects</u>			
810 Dues and Fees			15.00
Total Other Objects			\$15.00
Total 2750 Nonpublic Transportation			\$909,728.87

LEA : 123468503 Upper Moreland Township SD

Printed 12/14/2022 4:45:31 PM

General Fund (10)

2800 Support Services – Central

	<u>Elementary</u>	<u>Secondary</u>	<u>Federal</u>	<u>Total</u>
100 <u>Personnel Services – Salaries</u>				
100 Personnel Services – Salaries				860,789.07
Total Personnel Services – Salaries				\$860,789.07
200 <u>Personnel Services – Employee Benefits</u>				
210 Group Insurance – Contracted Provider				2,422.27
220 Social Security Contributions				64,372.42
230 PSERS Retirement Contributions				246,374.12
250 Unemployment Compensation				8,617.64
260 Workers' Compensation				4,998.18
270 Group Insurance – Self-Insurance				120,685.33
299 All Other Employee Benefits				(156.27)
Total Personnel Services – Employee Benefits				\$447,313.69
300 <u>Purchased Professional and Technical Services</u>				
330 Other Professional Services				119,000.00
340 Technical Services				148,656.93
Total Purchased Professional and Technical Services				\$267,656.93
500 <u>Other Purchased Services</u>				
530 Communications				9,629.55
549 Other Advertising/Public Relations				1,699.00
580 Travel				2,003.93
Total Other Purchased Services				\$13,332.48
600 <u>Supplies</u>				
610 General Supplies			126,590.40	529,388.88
640 Books and Periodicals				18,741.21
Total Supplies			\$126,590.40	\$548,130.09
800 <u>Other Objects</u>				
810 Dues and Fees				3,735.98
Total Other Objects				\$3,735.98
Total 2800 Support Services – Central			\$126,590.40	\$2,140,958.24

LEA : 123468503 Upper Moreland Township SD

Printed 12/14/2022 4:45:31 PM

General Fund (10)

2820 Information Services

	<u>Elementary</u>	<u>Secondary</u>	<u>Federal</u>	<u>Total</u>
100 <u>Personnel Services – Salaries</u>				
100 Personnel Services – Salaries				146,158.34
Total Personnel Services – Salaries				\$146,158.34
200 <u>Personnel Services – Employee Benefits</u>				
210 Group Insurance – Contracted Provider				469.76
220 Social Security Contributions				10,853.46
230 PSERS Retirement Contributions				49,177.10
250 Unemployment Compensation				1,461.82
260 Workers' Compensation				857.08
270 Group Insurance – Self-Insurance				25,655.28
Total Personnel Services – Employee Benefits				\$88,474.50
500 <u>Other Purchased Services</u>				
530 Communications				1,730.42
580 Travel				451.86
Total Other Purchased Services				\$2,182.28
600 <u>Supplies</u>				
610 General Supplies				4,018.38
640 Books and Periodicals				18,741.21
Total Supplies				\$22,759.59
Total 2820 Information Services				\$259,574.71

LEA : 123468503 Upper Moreland Township SD

Printed 12/14/2022 4:45:31 PM

General Fund (10)

2822 Internal Information Services	<u>Elementary</u>	<u>Secondary</u>	<u>Federal</u>	<u>Total</u>
100 <u>Personnel Services – Salaries</u>				
100 Personnel Services – Salaries				73,625.62
Total Personnel Services – Salaries				\$73,625.62
200 <u>Personnel Services – Employee Benefits</u>				
210 Group Insurance – Contracted Provider				237.68
220 Social Security Contributions				5,467.33
230 PSERS Retirement Contributions				24,773.23
250 Unemployment Compensation				736.22
260 Workers' Compensation				431.71
270 Group Insurance – Self-Insurance				12,925.41
Total Personnel Services – Employee Benefits				\$44,571.58
500 <u>Other Purchased Services</u>				
530 Communications				1,730.42
580 Travel				451.86
Total Other Purchased Services				\$2,182.28
600 <u>Supplies</u>				
610 General Supplies				456.00
640 Books and Periodicals				18,741.21
Total Supplies				\$19,197.21
Total 2822 Internal Information Services				\$139,576.69

LEA : 123468503 Upper Moreland Township SD

Printed 12/14/2022 4:45:31 PM

General Fund (10)

2823 Public Information Services

	<u>Elementary</u>	<u>Secondary</u>	<u>Federal</u>	<u>Total</u>
100 <u>Personnel Services – Salaries</u>				
100 Personnel Services – Salaries				72,532.72
Total Personnel Services – Salaries				\$72,532.72
200 <u>Personnel Services – Employee Benefits</u>				
210 Group Insurance – Contracted Provider				232.08
220 Social Security Contributions				5,386.13
230 PSERS Retirement Contributions				24,403.87
250 Unemployment Compensation				725.60
260 Workers' Compensation				425.37
270 Group Insurance – Self-Insurance				12,729.87
Total Personnel Services – Employee Benefits				\$43,902.92
600 <u>Supplies</u>				
610 General Supplies				3,562.38
Total Supplies				\$3,562.38
Total 2823 Public Information Services				\$119,998.02

LEA : 123468503 Upper Moreland Township SD

Printed 12/14/2022 4:45:31 PM

General Fund (10)

2830 Staff Services

	<u>Elementary</u>	<u>Secondary</u>	<u>Federal</u>	<u>Total</u>
100 <u>Personnel Services – Salaries</u>				
100 Personnel Services – Salaries				272,431.17
Total Personnel Services – Salaries				\$272,431.17
200 <u>Personnel Services – Employee Benefits</u>				
210 Group Insurance – Contracted Provider				258.36
220 Social Security Contributions				20,619.09
230 PSERS Retirement Contributions				61,359.06
250 Unemployment Compensation				2,733.96
260 Workers' Compensation				1,563.19
270 Group Insurance – Self-Insurance				33,387.38
299 All Other Employee Benefits				(156.27)
Total Personnel Services – Employee Benefits				\$119,764.77
300 <u>Purchased Professional and Technical Services</u>				
330 Other Professional Services				119,000.00
Total Purchased Professional and Technical Services				\$119,000.00
500 <u>Other Purchased Services</u>				
530 Communications				89.25
549 Other Advertising/Public Relations				1,699.00
580 Travel				1,279.48
Total Other Purchased Services				\$3,067.73
600 <u>Supplies</u>				
610 General Supplies				2,351.77
Total Supplies				\$2,351.77
800 <u>Other Objects</u>				
810 Dues and Fees				3,735.98
Total Other Objects				\$3,735.98
Total 2830 Staff Services				\$520,351.42

LEA : 123468503 Upper Moreland Township SD

Printed 12/14/2022 4:45:31 PM

General Fund (10)

2831 Supervision of Staff Services

Elementary Secondary Federal Total

100 <u>Personnel Services – Salaries</u>				
100 Personnel Services – Salaries				247,130.25
Total Personnel Services – Salaries				\$247,130.25
200 <u>Personnel Services – Employee Benefits</u>				
210 Group Insurance – Contracted Provider				238.34
220 Social Security Contributions				18,724.69
230 PSERS Retirement Contributions				55,570.54
250 Unemployment Compensation				2,480.94
260 Workers' Compensation				1,412.83
270 Group Insurance – Self-Insurance				30,419.38
299 All Other Employee Benefits				(156.27)
Total Personnel Services – Employee Benefits				\$108,690.45
300 <u>Purchased Professional and Technical Services</u>				
330 Other Professional Services				119,000.00
Total Purchased Professional and Technical Services				\$119,000.00
500 <u>Other Purchased Services</u>				
530 Communications				89.25
549 Other Advertising/Public Relations				1,699.00
580 Travel				1,279.48
Total Other Purchased Services				\$3,067.73
600 <u>Supplies</u>				
610 General Supplies				2,351.77
Total Supplies				\$2,351.77
800 <u>Other Objects</u>				
810 Dues and Fees				3,735.98
Total Other Objects				\$3,735.98
Total 2831 Supervision of Staff Services				\$483,976.18

LEA : 123468503 Upper Moreland Township SD

Printed 12/14/2022 4:45:31 PM

General Fund (10)

2833 Staff Accounting Services	<u>Elementary</u>	<u>Secondary</u>	<u>Federal</u>	<u>Total</u>
100 <u>Personnel Services – Salaries</u>				
100 Personnel Services – Salaries				25,300.92
Total Personnel Services – Salaries				\$25,300.92
200 <u>Personnel Services – Employee Benefits</u>				
210 Group Insurance – Contracted Provider				20.02
220 Social Security Contributions				1,894.40
230 PSERS Retirement Contributions				5,788.52
250 Unemployment Compensation				253.02
260 Workers' Compensation				150.36
270 Group Insurance – Self-Insurance				2,968.00
Total Personnel Services – Employee Benefits				\$11,074.32
Total 2833 Staff Accounting Services				\$36,375.24

LEA : 123468503 Upper Moreland Township SD

Printed 12/14/2022 4:45:31 PM

General Fund (10)

2840 Data Processing Services	<u>Elementary</u>	<u>Secondary</u>	<u>Federal</u>	<u>Total</u>
100 <u>Personnel Services – Salaries</u>				
100 Personnel Services – Salaries				442,199.56
Total Personnel Services – Salaries				\$442,199.56
200 <u>Personnel Services – Employee Benefits</u>				
210 Group Insurance – Contracted Provider				1,694.15
220 Social Security Contributions				32,899.87
230 PSERS Retirement Contributions				135,837.96
250 Unemployment Compensation				4,421.86
260 Workers' Compensation				2,577.91
270 Group Insurance – Self-Insurance				61,642.67
Total Personnel Services – Employee Benefits				\$239,074.42
300 <u>Purchased Professional and Technical Services</u>				
340 Technical Services				148,656.93
Total Purchased Professional and Technical Services				\$148,656.93
500 <u>Other Purchased Services</u>				
530 Communications				7,809.88
580 Travel				272.59
Total Other Purchased Services				\$8,082.47
600 <u>Supplies</u>				
610 General Supplies			126,590.40	523,018.73
Total Supplies			\$126,590.40	\$523,018.73
Total 2840 Data Processing Services			\$126,590.40	\$1,361,032.11

LEA : 123468503 Upper Moreland Township SD

Printed 12/14/2022 4:45:31 PM

General Fund (10)

2900 Other Support Services	<u>Elementary</u>	<u>Secondary</u>	<u>Federal</u>	<u>Total</u>
500 <u>Other Purchased Services</u>				
595 IU Payments By Withholding				39,493.07
Total Other Purchased Services				\$39,493.07
Total 2900 Other Support Services				\$39,493.07

Page 115

LEA : 123468503 Upper Moreland Township SD

Printed 12/14/2022 4:45:36 PM

General Fund (10)

3000 Operation of Non-Instructional Services	<u>Total</u>
100 <u>Personnel Services – Salaries</u>	
100 Personnel Services – Salaries	374,821.31
Total Personnel Services – Salaries	\$374,821.31
200 <u>Personnel Services – Employee Benefits</u>	
220 Social Security Contributions	31,061.39
230 PSERS Retirement Contributions	110,244.56
250 Unemployment Compensation	4,088.42
260 Workers' Compensation	2,481.07
Total Personnel Services – Employee Benefits	\$147,875.44
300 <u>Purchased Professional and Technical Services</u>	
330 Other Professional Services	69,961.28
340 Technical Services	5,263.13
Total Purchased Professional and Technical Services	\$75,224.41
400 <u>Purchased Property Services</u>	
430 Repairs and Maintenance Services	13,676.40
Total Purchased Property Services	\$13,676.40
500 <u>Other Purchased Services</u>	
520 Insurance – General	5,729.00
530 Communications	55.00
599 Other Miscellaneous Purchased Services	524.60
Total Other Purchased Services	\$6,308.60
600 <u>Supplies</u>	
610 General Supplies	84,704.59
Total Supplies	\$84,704.59
800 <u>Other Objects</u>	
810 Dues and Fees	80,180.39
Total Other Objects	\$80,180.39
Total 3000 Operation of Non-Instructional Services	\$782,791.14

LEA : 123468503 Upper Moreland Township SD

Printed 12/14/2022 4:45:36 PM

General Fund (10)

3200 Student Activities

	<u>Elementary</u>	<u>Secondary</u>	<u>Federal</u>	<u>Total</u>
100 <u>Personnel Services – Salaries</u>				
100 Personnel Services – Salaries			7,612.50	374,821.31
Total Personnel Services – Salaries			\$7,612.50	\$374,821.31
200 <u>Personnel Services – Employee Benefits</u>				
220 Social Security Contributions			3,389.61	31,061.39
230 PSERS Retirement Contributions				110,244.56
250 Unemployment Compensation			409.86	4,088.42
260 Workers' Compensation			250.64	2,481.07
Total Personnel Services – Employee Benefits			\$4,050.11	\$147,875.44
300 <u>Purchased Professional and Technical Services</u>				
330 Other Professional Services			36,780.98	69,961.28
340 Technical Services				5,263.13
Total Purchased Professional and Technical Services			\$36,780.98	\$75,224.41
400 <u>Purchased Property Services</u>				
430 Repairs and Maintenance Services				13,676.40
Total Purchased Property Services				\$13,676.40
500 <u>Other Purchased Services</u>				
520 Insurance – General				5,729.00
530 Communications				55.00
599 Other Miscellaneous Purchased Services				524.60
Total Other Purchased Services				\$6,308.60
600 <u>Supplies</u>				
610 General Supplies				84,704.59
Total Supplies				\$84,704.59
800 <u>Other Objects</u>				
810 Dues and Fees				80,180.39
Total Other Objects				\$80,180.39
Total 3200 Student Activities			\$48,443.59	\$782,791.14

LEA : 123468503 Upper Moreland Township SD

Printed 12/14/2022 4:45:38 PM

General Fund (10)

4000 Facilities Acquisition, Construction and Improvement Services	<u>Total</u>
400 <u>Purchased Property Services</u>	
490 Other Purchased Property Services	109,860.00
Total Purchased Property Services	\$109,860.00
Total 4000 Facilities Acquisition, Construction and Improvement Services	\$109,860.00

LEA : 123468503 Upper Moreland Township SD

Printed 12/14/2022 4:45:38 PM

General Fund (10)

4500 Building Acquisition and Construction Services – Original and Additional	<u>Elementary</u>	<u>Secondary</u>	<u>Federal</u>	<u>Total</u>
400 <u>Purchased Property Services</u>				
490 Other Purchased Property Services				109,860.00
Total Purchased Property Services				\$109,860.00
Total 4500 Building Acquisition and Construction Services – Original and Additional				\$109,860.00

LEA : 123468503 Upper Moreland Township SD

Printed 12/14/2022 4:45:42 PM

General Fund (10)	
5000 Other Expenditures and Financing Uses	<u>Total</u>
800 <u>Other Objects</u>	
880 Refunds of Prior Years' Receipts	1,604.04
Total Other Objects	\$1,604.04
900 <u>Other Uses of Funds</u>	
932 Capital Reserve Fund Transfers Applicable To Fund 32	4,211,119.04
939 Other Fund Transfers	7,128,270.75
Total Other Uses of Funds	\$11,339,389.79
Total 5000 Other Expenditures and Financing Uses	\$11,340,993.83

LEA : 123468503 Upper Moreland Township SD

Printed 12/14/2022 4:45:42 PM

General Fund (10)

5100 Debt Service / Other Expenditures and Financing Uses	<u>Elementary</u>	<u>Secondary</u>	<u>Federal</u>	<u>Total</u>
800 <u>Other Objects</u>				
880 Refunds of Prior Years' Receipts				1,604.04
Total Other Objects				\$1,604.04
Total 5100 Debt Service / Other Expenditures and Financing Uses				\$1,604.04

LEA : 123468503 Upper Moreland Township SD

Printed 12/14/2022 4:45:42 PM

General Fund (10)

5130 Refund of Prior Year Revenues / Receipts	<u>Elementary</u>	<u>Secondary</u>	<u>Federal</u>	<u>Total</u>
800 <u>Other Objects</u>				
880 Refunds of Prior Years' Receipts				1,604.04
Total Other Objects				\$1,604.04
Total 5130 Refund of Prior Year Revenues / Receipts				\$1,604.04

LEA : 123468503 Upper Moreland Township SD

Printed 12/14/2022 4:45:42 PM

General Fund (10)

5200 Interfund Transfers – Out	<u>Elementary</u>	<u>Secondary</u>	<u>Federal</u>	<u>Total</u>
900 <u>Other Uses of Funds</u>				
932 Capital Reserve Fund Transfers Applicable To Fund 32				4,211,119.04
939 Other Fund Transfers				7,128,270.75
Total Other Uses of Funds				\$11,339,389.79
Total 5200 Interfund Transfers – Out				\$11,339,389.79

LEA : 123468503 Upper Moreland Township SD

Printed 12/14/2022 4:45:42 PM

General Fund (10)

5230 Capital Projects Fund Transfers	<u>Elementary</u>	<u>Secondary</u>	<u>Federal</u>	<u>Total</u>
900 <u>Other Uses of Funds</u>				
932 Capital Reserve Fund Transfers Applicable To Fund 32				4,211,119.04
Total Other Uses of Funds				\$4,211,119.04
Total 5230 Capital Projects Fund Transfers				\$4,211,119.04

LEA : 123468503 Upper Moreland Township SD

Printed 12/14/2022 4:45:42 PM

General Fund (10)

5240 Debt Service Fund Transfers	<u>Elementary</u>	<u>Secondary</u>	<u>Federal</u>	<u>Total</u>
900 <u>Other Uses of Funds</u>				
939 Other Fund Transfers				7,128,270.75
Total Other Uses of Funds				\$7,128,270.75
Total 5240 Debt Service Fund Transfers				\$7,128,270.75

LEA : 123468503 Upper Moreland Township SD

Printed 12/14/2022 4:45:34 PM

Capital Reserve Fund - § 1431 (32)

2000 Support Services		<u>Total</u>
300 <u>Purchased Professional and Technical Services</u>		
330 Other Professional Services		633,532.90
Total Purchased Professional and Technical Services		\$633,532.90
400 <u>Purchased Property Services</u>		
430 Repairs and Maintenance Services		67,535.73
Total Purchased Property Services		\$67,535.73
Total 2000 Support Services		\$701,068.63

LEA : 123468503 Upper Moreland Township SD

Printed 12/14/2022 4:45:34 PM

Capital Reserve Fund - § 1431 (32)

2600 Operation and Maintenance of Plant Services	<u>Elementary</u>	<u>Secondary</u>	<u>Federal</u>	<u>Total</u>
300 <u>Purchased Professional and Technical Services</u>				
330 Other Professional Services				633,532.90
Total Purchased Professional and Technical Services				\$633,532.90
400 <u>Purchased Property Services</u>				
430 Repairs and Maintenance Services				67,535.73
Total Purchased Property Services				\$67,535.73
Total 2600 Operation and Maintenance of Plant Services				\$701,068.63

LEA : 123468503 Upper Moreland Township SD

Printed 12/14/2022 4:45:34 PM

Capital Reserve Fund - § 1431 (32)

2620 Operation of Buildings Services	<u>Elementary</u>	<u>Secondary</u>	<u>Federal</u>	<u>Total</u>
300 <u>Purchased Professional and Technical Services</u>				
330 Other Professional Services				633,532.90
Total Purchased Professional and Technical Services				\$633,532.90
400 <u>Purchased Property Services</u>				
430 Repairs and Maintenance Services				67,535.73
Total Purchased Property Services				\$67,535.73
Total 2620 Operation of Buildings Services				\$701,068.63

LEA : 123468503 Upper Moreland Township SD

Printed 12/14/2022 4:45:40 PM

Capital Reserve Fund - § 1431 (32)

4000 Facilities Acquisition, Construction and Improvement Services

Total

400 Purchased Property Services

450 Construction Services	55,096.14
---------------------------	-----------

Total Purchased Property Services	\$55,096.14
-----------------------------------	-------------

Total 4000 Facilities Acquisition, Construction and Improvement Services	\$55,096.14
--	-------------

LEA : 123468503 Upper Moreland Township SD

Printed 12/14/2022 4:45:40 PM

Capital Reserve Fund - § 1431 (32)				
4600 Existing Building Improvement Services	<u>Elementary</u>	<u>Secondary</u>	<u>Federal</u>	<u>Total</u>
400 <u>Purchased Property Services</u>				
450 Construction Services				55,096.14
Total Purchased Property Services				\$55,096.14
Total 4600 Existing Building Improvement Services				\$55,096.14

LEA : 123468503 Upper Moreland Township SD

Printed 12/14/2022 4:45:47 PM

Debt Service Fund (40)

5000 Other Expenditures and Financing Uses

Total

800 <u>Other Objects</u>	
830 Interest	2,299,050.75
Total Other Objects	\$2,299,050.75
900 <u>Other Uses of Funds</u>	
910 Redemption of Principal	4,830,000.00
Total Other Uses of Funds	\$4,830,000.00
Total 5000 Other Expenditures and Financing Uses	\$7,129,050.75

LEA : 123468503 Upper Moreland Township SD

Printed 12/14/2022 4:45:47 PM

Debt Service Fund (40)

5100 Debt Service / Other Expenditures and Financing Uses	<u>Elementary</u>	<u>Secondary</u>	<u>Federal</u>	<u>Total</u>
800 <u>Other Objects</u>				
830 Interest				2,299,050.75
Total Other Objects				\$2,299,050.75
900 <u>Other Uses of Funds</u>				
910 Redemption of Principal				4,830,000.00
Total Other Uses of Funds				\$4,830,000.00
Total 5100 Debt Service / Other Expenditures and Financing Uses				\$7,129,050.75

LEA : 123468503 Upper Moreland Township SD

Printed 12/14/2022 4:45:47 PM

Debt Service Fund (40)

5110 Debt Service	<u>Elementary</u>	<u>Secondary</u>	<u>Federal</u>	<u>Total</u>
800 <u>Other Objects</u>				
830 Interest				2,299,050.75
Total Other Objects				\$2,299,050.75
900 <u>Other Uses of Funds</u>				
910 Redemption of Principal				4,830,000.00
Total Other Uses of Funds				\$4,830,000.00
Total 5110 Debt Service				\$7,129,050.75

LEA : 123468503 Upper Moreland Township SD

Printed 12/14/2022 4:45:49 PM

	<u>General Fund(10)</u>	<u>Student Sponsored Activity Fund(21)</u>	<u>Public Purpose Trust(27)</u>	<u>Other Compt Approved (28)</u>	<u>Athletic / Activity(29)</u>
1000 <u>Instruction</u>					
1100 Regular Programs - Elementary / Secondary	28,996,929.82				
1200 Special Programs - Elementary / Secondary	9,896,372.12				
1300 Vocational Education	1,416,427.00				
1500 Nonpublic School Programs	9,971.02				
Total Instruction	\$40,319,699.96				
2000 <u>Support Services</u>					
2100 Support Services - Students	2,049,780.63				
2200 Support Services - Instructional Staff	1,652,970.56				
2300 Support Services - Administration	4,547,366.55				
2400 Support Services - Pupil Health	549,120.95				
2500 Support Services - Business	1,115,509.26				
2600 Operation and Maintenance of Plant Services	4,701,539.38				
2700 Student Transportation Services	3,408,145.46				
2800 Support Services - Central	2,140,958.24				
2900 Other Support Services	39,493.07				
Total Support Services	\$20,204,884.10				
3000 <u>Operation of Non-Instructional Services</u>					
3200 Student Activities	782,791.14				
Total Operation of Non-Instructional Services	\$782,791.14				
4000 <u>Facilities Acquisition, Construction and Improvement Services</u>					
4500 Building Acquisition and Construction Services - Original and Additional	109,860.00				
4600 Existing Building Improvement Services					
Total Facilities Acquisition, Construction and Improvement Services	\$109,860.00				
5000 <u>Other Expenditures and Financing Uses</u>					
5100 Debt Service / Other Expenditures and Financing Uses	1,604.04				
5200 Interfund Transfers - Out	11,339,389.79				
Total Other Expenditures and Financing Uses	\$11,340,993.83				
TOTAL ACTUAL EXPENDITURES & OTHER FINANCING USES	\$72,758,229.03				

LEA : 123468503 Upper Moreland Township SD

Printed 12/14/2022 4:45:49 PM

	<u>Capital Reserve (690.1850)(31)</u>	<u>Capital Reserve (1431)(32)</u>	<u>Other Capital Projects Fund(39)</u>	<u>Debt Service(40)</u>	<u>Permanent(90)</u>
1000 <u>Instruction</u>					
1100 Regular Programs - Elementary / Secondary					
1200 Special Programs - Elementary / Secondary					
1300 Vocational Education					
1500 Nonpublic School Programs					
Total Instruction					
2000 <u>Support Services</u>					
2100 Support Services - Students					
2200 Support Services - Instructional Staff					
2300 Support Services - Administration					
2400 Support Services - Pupil Health					
2500 Support Services - Business					
2600 Operation and Maintenance of Plant Services			701,068.63		
2700 Student Transportation Services					
2800 Support Services - Central					
2900 Other Support Services					
Total Support Services			\$701,068.63		
3000 <u>Operation of Non-Instructional Services</u>					
3200 Student Activities					
Total Operation of Non-Instructional Services					
4000 <u>Facilities Acquisition, Construction and Improvement Services</u>					
4500 Building Acquisition and Construction Services - Original and Additional					
4600 Existing Building Improvement Services			55,096.14		
Total Facilities Acquisition, Construction and Improvement Services			\$55,096.14		
5000 <u>Other Expenditures and Financing Uses</u>					
5100 Debt Service / Other Expenditures and Financing Uses				7,129,050.75	
5200 Interfund Transfers - Out					
Total Other Expenditures and Financing Uses				\$7,129,050.75	
TOTAL ACTUAL EXPENDITURES & OTHER FINANCING USES			\$756,164.77	\$7,129,050.75	

LEA : 123468503 Upper Moreland Township SD

Printed 12/14/2022 4:45:49 PM

	<u>Total</u>
1000 <u>Instruction</u>	
1100 Regular Programs - Elementary / Secondary	28,996,929.82
1200 Special Programs - Elementary / Secondary	9,896,372.12
1300 Vocational Education	1,416,427.00
1500 Nonpublic School Programs	9,971.02
Total Instruction	\$40,319,699.96
2000 <u>Support Services</u>	
2100 Support Services - Students	2,049,780.63
2200 Support Services - Instructional Staff	1,652,970.56
2300 Support Services - Administration	4,547,366.55
2400 Support Services - Pupil Health	549,120.95
2500 Support Services - Business	1,115,509.26
2600 Operation and Maintenance of Plant Services	5,402,608.01
2700 Student Transportation Services	3,408,145.46
2800 Support Services - Central	2,140,958.24
2900 Other Support Services	39,493.07
Total Support Services	\$20,905,952.73
3000 <u>Operation of Non-Instructional Services</u>	
3200 Student Activities	782,791.14
Total Operation of Non-Instructional Services	\$782,791.14
4000 <u>Facilities Acquisition, Construction and Improvement Services</u>	
4500 Building Acquisition and Construction Services - Original and Additional	109,860.00
4600 Existing Building Improvement Services	55,096.14
Total Facilities Acquisition, Construction and Improvement Services	\$164,956.14
5000 <u>Other Expenditures and Financing Uses</u>	
5100 Debt Service / Other Expenditures and Financing Uses	7,130,654.79
5200 Interfund Transfers - Out	11,339,389.79
Total Other Expenditures and Financing Uses	\$18,470,044.58
TOTAL ACTUAL EXPENDITURES & OTHER FINANCING USES	\$80,643,444.55

LEA : 123468503 Upper Moreland Township SD

Printed 12/14/2022 4:45:58 PM

PSERS Salary Data (Salary Data should relate to the General Fund only)

Amount	Description	Amount
	Total Salary Base for salaries subject to PSERS withholding	28,969,877.61
	Total Federally Funded salaries subject to PSERS withholding	621,712.00

Title I Expenditure Data

Amount	Description	Amount
	Expenditures Funded with Current Title I Funds	185,079.00
	Expenditures Funded with Carry over Title I Funds	
Total	Title I Expenditure Data	\$185,079.00

Title IV Revenue Data

Amount	Description	Amount
	Revenue from Title IV-A-1: Student Support and Academic Enrichment Grants	23,442.00
	Revenue from Title IV-B: 21st Century Community Learning Centers	

Title V Revenue Data

Amount	Description	Amount
	Revenue from Title V-B-2: Rural and Low-Income School Programs	
	Revenue from Title V-B-1: Small Rural School Achievement (Directly from the Federal Govt)	

1 . <u>Current Special Education Expenditures within Function 1000.\r\nSee list of exclusions in the note below.</u>	1,617,739.91
2 . <u>Current Special Education Expenditures within Function 2000.\r\nSee list of exclusions in the note below.</u>	9,071.02
3 . <u>Current Special Education Expenditures within Sub-Function 2100.\r\nThis data should also be included in line 2 above.\r\nSee list of exclusions in the note below.</u>	6,631.36
4 . <u>Current Special Education Expenditures within Sub-Function 2200.\r\nThis data should also be included in line 2 above.\r\nSee list of exclusions in the note below.</u>	2,439.66
5 . <u>Current Special Education Expenditures within Sub-Function 2700.\r\nThis data should also be included in line 2 above.\r\nSee list of exclusions in the note below.</u>	
6 . <u>Current Special Education Expenditures within Sub-Function 3100.\r\nSee list of exclusions in the note below.</u>	
7 . <u>Current Special Education Expenditures within Sub-Function 3200.\r\nSee list of exclusions in the note below.</u>	

Note: The Current Special Education Expenditure amounts for each line should be calculated as follows:

- * Include the total expenditures for special education costs from all funds for the function/sub-function requested
- * Exclude data from sub-functions: 1243,1450,1500,1600,1807,2280,2450,2750,2990
- * Exclude data from objects: 322,511,512,516,561,562,564,566,592,593,594,595,596,597,700,830,899

Benefits for Staff Relative to Collective Bargaining Agreements

	OBJECT	COVERED	NOT COVERED	TOTAL
10 General Fund				
	211 Medical Insurance			
	212 Dental Insurance			
	215 Eye Care Insurance			
	216 Prescription Insurance			
	271 Self-Insurance Medical Benefits	3,851,481.00		3,851,481.00
	272 Self-Insurance Dental Benefits	441,590.00		441,590.00
	275 Self-Insurance Eye Care Benefits			
	276 Self-Insurance Prescription Benefits	1,090,704.00		1,090,704.00
	FUND TOTAL	\$5,383,775.00		\$5,383,775.00
50 Enterprise Fund				
	211 Medical Insurance			
	212 Dental Insurance			
	215 Eye Care Insurance			
	216 Prescription Insurance			
	271 Self-Insurance Medical Benefits	51,750.00		51,750.00
	272 Self-Insurance Dental Benefits	3,799.00		3,799.00
	275 Self-Insurance Eye Care Benefits			
	276 Self-Insurance Prescription Benefits	15,004.00		15,004.00
	FUND TOTAL	\$70,553.00		\$70,553.00
60 Internal Service Fund	No Self Insurance data to report			
	211 Medical Insurance			
	212 Dental Insurance			
	215 Eye Care Insurance			
	216 Prescription Insurance			
	271 Self-Insurance Medical Benefits			
	272 Self-Insurance Dental Benefits			
	275 Self-Insurance Eye Care Benefits			
	276 Self-Insurance Prescription Benefits			
	FUND TOTAL			
Total of All Funds		\$5,454,328.00		\$5,454,328.00

LEA : 123468503 Upper Moreland Township SD

Printed 12/14/2022 4:46:06 PM

Function	Special Education (Prior Year)	Nonspecial Education (Prior Year)	Total (Prior Year)	Special Education (Current Year)	Nonspecial Education (Current Year)	Total (Current Year)
2120 Guidance Services	207,100.31	1,291,454.73	1,498,555.04	208,587.49	1,300,728.62	1,509,316.11
2140 Psychological Services	402,679.39	134,226.46	536,905.85	358,023.75	119,341.25	477,365.00
2150 Speech Pathology and Audiology Services						
2160 Social Work Services						
2260 Instruction and Curriculum Development Services	41,049.23	255,978.50	297,027.73	47,358.11	295,319.99	342,678.10
2350 Legal and Accounting Services		211,581.36	211,581.36		281,931.76	281,931.76
2420 Medical Services						
2440 Nursing Services	53,996.56	336,716.58	390,713.14	67,099.14	418,422.84	485,521.98
2700 Student Transportation Services	586,764.72	1,805,892.90	2,392,657.62	770,914.31	2,372,652.31	3,143,566.62
Total	\$1,291,590.21	\$4,035,850.53	\$5,327,440.74	\$1,451,982.80	\$4,788,396.77	\$6,240,379.57

LEA : 123468503 Upper Moreland Township SD

Printed 12/14/2022 4:46:08 PM

(PRINCIPAL AMOUNTS ONLY)

GOVERNMENTAL FUNDS/ ACTIVITIES

	Short-Term Borrowing	General Obligation Bonds/Notes	Authority Building Obligations	OLTD, Ext Term Fin, Leases	Other Post- Employment Benefits (OPEB)	Compensated Absences	Net Pension Liability	Total
1. Debt at Beginning of Fiscal Year		67,550,000.00			5,713,435.00	1,038,350.00	101,151,000.00	175,452,785.00
2. Additional Debt Incurred During Year					23,827.00	284,479.00		308,306.00
3. Retirements and Repayments		4,830,000.00			161,500.00		26,998,000.00	31,989,500.00
4. Debt at End of Fiscal Year		62,720,000.00			5,575,762.00	1,322,829.00	74,153,000.00	143,771,591.00
5. Accreted Interest at End Of Fiscal Year								
6. Total Debt and Accreted Interest		62,720,000.00			5,575,762.00	1,322,829.00	74,153,000.00	143,771,591.00
7. Current Portion P&I - Due within 1 year		7,113,098.00				132,283.00		7,245,381.00
8. Interest Paid during current fiscal year		2,298,270.75						2,298,270.75

(PRINCIPAL AMOUNTS ONLY)

PROPRIETARY FUNDS

	Short-Term Borrowing	General Obligation Bonds/Notes	Authority Building Obligations	OLTD, Ext Term Fin, Leases	Other Post- Employment Benefits (OPEB)	Compensated Absences	Net Pension Liability	Total
1. Debt at Beginning of Fiscal Year					68,500.00		1,562,000.00	1,630,500.00
2. Additional Debt Incurred During Year								
3. Retirements and Repayments					1,500.00		417,000.00	418,500.00
4. Debt at End of Fiscal Year					67,000.00		1,145,000.00	1,212,000.00
5. Accreted Interest at End Of Fiscal Year								
6. Total Debt and Accreted Interest					67,000.00		1,145,000.00	1,212,000.00
7. Current Portion P&I - Due within 1 year								
8. Interest Paid during current fiscal year								

LEA : 123468503 Upper Moreland Township SD

Total Principal and Interest Payments Made by Your School - All Funds

Function	Fund		Principal (910)	Principal (920)	Interest (830)	Total (Principal +Interest)	Misc Other Uses (990)
5110	10	General Fund					
5110	20	Special Revenue Funds					
5110	30	Capital Projects Funds					
5110	40	Debt Service Fund	4,830,000.00		2,299,050.75	7,129,050.75	
5110	90	Permanent Fund					
5120	10	General Fund					
5120	20	Special Revenue Funds					
5120	30	Capital Projects Funds					
5120	40	Debt Service Fund					
5140	10	General Fund					
5140	20	Special Revenue Funds					
5140	30	Capital Projects Funds					
5140	40	Debt Service Fund					
5140	90	Permanent Fund					
Total Debt Payments - Governmental Funds			\$4,830,000.00		\$2,299,050.75	\$7,129,050.75	

Function	Fund		Principal (910)	Principal (920)	Interest (830)	Total (Principal +Interest)
5110	50	Enterprise Fund				
5110	60	Internal Service Fund				
5120	50	Enterprise Fund				
5120	60	Internal Service Fund				
5140	50	Enterprise Fund				
5140	60	Internal Service Fund				
Total Debt Payments - Proprietary Funds						

LEA : 123468503 Upper Moreland Township SD

Printed 12/14/2022 4:46:08 PM

Debt Category	Debt Issue Date (MM/YYYY)	Principal Amounts Only				Current Portion Due Within One Year (Principal and Interest)	Interest Paid During Fiscal Year
		Debt at Beginning of Fiscal Year	Additions	Reductions / Repayments	Debt at End of Fiscal Year		
General Obligation Bonds/Notes – CIB	06/2021	7,600,000.00		1,080,000.00	6,520,000.00	913,725.00	146,925.00
General Obligation Bonds/Notes – CIB	01/2021	9,080,000.00		5,000.00	9,075,000.00	185,850.00	180,883.25
General Obligation Bonds/Notes – CIB	03/2019	9,520,000.00		5,000.00	9,515,000.00	569,700.00	261,037.50
General Obligation Bonds/Notes – CIB	04/2018	8,990,000.00		5,000.00	8,985,000.00	342,360.00	337,456.25
General Obligation Bonds/Notes – CIB	01/2017	15,800,000.00		10,000.00	15,790,000.00	760,225.00	750,443.75
General Obligation Bonds/Notes – CIB	04/2017	16,560,000.00		3,725,000.00	12,835,000.00	4,341,238.00	621,525.00
Compensated Absences		1,038,350.00	284,479.00		1,322,829.00	132,283.00	
Other Post-Employment Benefits (OPEB)		5,713,435.00	23,827.00	161,500.00	5,575,762.00		
Net Pension Liability		101,151,000.00		26,998,000.00	74,153,000.00		
Totals for Debt Entered:		\$175,452,785.00	\$308,306.00	\$31,989,500.00	\$143,771,591.00	\$7,245,381.00	\$2,298,270.75

Debt Category	Debt Issue Date (MM/YYYY)	Principal Amounts Only				Current Portion Due Within One Year (Principal and Interest)	Interest Paid During Fiscal Year
		Debt at Beginning of Fiscal Year	Additions	Reductions / Repayments	Debt at End of Fiscal Year		
Other Post-Employment Benefits (OPEB)		68,500.00		1,500.00	67,000.00		
Net Pension Liability		1,562,000.00		417,000.00	1,145,000.00		
Totals for Debt Entered:		\$1,630,500.00		\$418,500.00	\$1,212,000.00		

LEA : 123468503 Upper Moreland Township SD

Printed 12/14/2022 4:46:10 PM

General Fund (10)

Section 1: Tuition/Purchased Services as Reported within Expenditure Detail	Amount
Tuition Reported in General Fund Expenditures 1000-560	4,296,706.75
Purchased Services in General Fund Expenditures 1000-594 and 1000-597	878.58
Section 1 Total	\$4,297,585.33

Section 2: Tuition Paid to Institution Types During Fiscal Year	Tuition Paid For Nonspecial Education	Tuition Paid For Special Education	Total
1 1306 Institutions			
2 Institutionalized Children's Programs			
3 Juveniles Incarcerated in Adult Facilities			
4 Residential Treatment Facilities	9,445.99		9,445.99
5 Other Local Education Agencies		9,748.00	9,748.00
6 Brick and Mortar Charter Schools			
7 Cyber Charter Schools	1,111,431.33	597,216.98	1,708,648.31
8 Career and Technology Centers	1,384,925.00		1,384,925.00
9 Approved Private Schools		438,708.82	438,708.82
10 PA Chartered Schools for the Deaf and Blind			
11 Private Residential Rehabilitative Institutions			
12 Juvenile Detention Centers			
13 Special Program Jointures	18,895.11		18,895.11
14 Other Tuition Not Included Elsewhere In This Section	3,230.58	723,983.52	727,214.10
Section 2 Total	\$2,527,928.01	\$1,769,657.32	\$4,297,585.33

1 .	<u>Student Transportation Services for Educational Field Trips</u>	19,522.41
2 .	<u>Student Transportation Services for Student Activities</u>	97,857.30
3 .	<u>Rental of Vehicles for Student Transportation Services</u>	
4 .	<u>Capital Reserve Funds</u>	

Include only district-owned transportation expenditures paid from State or local money.
DO NOT include federal expenditures or payments to contract service providers.
Contracted transportation services should not be recorded on this schedule.

LEA : 123468503 Upper Moreland Township SD

Printed 12/14/2022 4:46:16 PM

Food Service / Cafeteria Operations Fund (51)

3000 Operation of Non-Instructional Services		Total
100	<u>Personnel Services – Salaries</u>	
100	Personnel Services – Salaries	457,142.00
Total Personnel Services – Salaries		\$457,142.00
200	<u>Personnel Services – Employee Benefits</u>	
210	Group Insurance – Contracted Provider	986.90
220	Social Security Contributions	34,063.45
230	PSERS Retirement Contributions	43,243.53
250	Unemployment Compensation	4,574.57
260	Workers' Compensation	2,650.31
270	Group Insurance – Self-Insurance	70,552.68
Total Personnel Services – Employee Benefits		\$156,071.44
300	<u>Purchased Professional and Technical Services</u>	
300	Purchased Professional and Technical Services	10,551.00
Total Purchased Professional and Technical Services		\$10,551.00
400	<u>Purchased Property Services</u>	
410	Cleaning Services	11,667.00
430	Repairs and Maintenance Services	24,432.00
Total Purchased Property Services		\$36,099.00
500	<u>Other Purchased Services</u>	
530	Communications	143.00
580	Travel	2,778.00
599	Other Miscellaneous Purchased Services	209.00
Total Other Purchased Services		\$3,130.00
600	<u>Supplies</u>	
610	General Supplies	34,803.00
630	Food	787,260.00
650	Supplies & Fees – Technology Related	3,775.00
Total Supplies		\$825,838.00
700	<u>Property</u>	
740	Depreciation	74,538.00
Total Property		\$74,538.00
800	<u>Other Objects</u>	
810	Dues and Fees	1,189.00
890	Miscellaneous Expenditures	193.00
Total Other Objects		\$1,382.00
Total 3000 Operation of Non-Instructional Services		\$1,564,751.44

LEA : 123468503 Upper Moreland Township SD

Printed 12/14/2022 4:46:16 PM

Food Service / Cafeteria Operations Fund (51)

3100 Food Services	Elementary	Secondary	Federal	Total
100 <u>Personnel Services – Salaries</u>				
100 Personnel Services – Salaries				457,142.00
Total Personnel Services – Salaries				\$457,142.00
200 <u>Personnel Services – Employee Benefits</u>				
210 Group Insurance – Contracted Provider				986.90
220 Social Security Contributions				34,063.45
230 PSERS Retirement Contributions				43,243.53
250 Unemployment Compensation				4,574.57
260 Workers' Compensation				2,650.31
270 Group Insurance – Self-Insurance				70,552.68
Total Personnel Services – Employee Benefits				\$156,071.44
300 <u>Purchased Professional and Technical Services</u>				
300 Purchased Professional and Technical Services				10,551.00
Total Purchased Professional and Technical Services				\$10,551.00
400 <u>Purchased Property Services</u>				
410 Cleaning Services				11,667.00
430 Repairs and Maintenance Services				24,432.00
Total Purchased Property Services				\$36,099.00
500 <u>Other Purchased Services</u>				
530 Communications				143.00
580 Travel				2,778.00
599 Other Miscellaneous Purchased Services				209.00
Total Other Purchased Services				\$3,130.00
600 <u>Supplies</u>				
610 General Supplies				34,803.00
630 Food				787,260.00
650 Supplies & Fees – Technology Related				3,775.00
Total Supplies				\$825,838.00
700 <u>Property</u>				
740 Depreciation				74,538.00
Total Property				\$74,538.00
800 <u>Other Objects</u>				
810 Dues and Fees				1,189.00
890 Miscellaneous Expenditures				193.00
Total Other Objects				\$1,382.00
Total 3100 Food Services				\$1,564,751.44

LEA : 123468503 Upper Moreland Township SD

Printed 12/14/2022 4:46:14 PM

Internal Service Fund (60)

1000 Instruction		<u>Total</u>
200 <u>Personnel Services – Employee Benefits</u>		
250	Unemployment Compensation	42,298.72
260	Workers' Compensation	244,957.82
270	Group Insurance – Self-Insurance	6,443,215.24
280	Other Post-Employment Benefits (OPEB)	338,188.41
Total Personnel Services – Employee Benefits		\$7,068,660.19
300 <u>Purchased Professional and Technical Services</u>		
330	Other Professional Services	22,522.50
Total Purchased Professional and Technical Services		\$22,522.50
Total 1000 Instruction		\$7,091,182.69

LEA : 123468503 Upper Moreland Township SD

Printed 12/14/2022 4:46:14 PM

Internal Service Fund (60)

1100 Regular Programs – Elementary / Secondary	<u>Elementary</u>	<u>Secondary</u>	<u>Federal</u>	<u>Total</u>
200 <u>Personnel Services – Employee Benefits</u>				
250 Unemployment Compensation				42,298.72
260 Workers' Compensation				244,957.82
270 Group Insurance – Self-Insurance				6,443,215.24
280 Other Post-Employment Benefits (OPEB)				338,188.41
Total Personnel Services – Employee Benefits				\$7,068,660.19
300 <u>Purchased Professional and Technical Services</u>				
330 Other Professional Services				22,522.50
Total Purchased Professional and Technical Services				\$22,522.50
Total 1100 Regular Programs – Elementary / Secondary				\$7,091,182.69

LEA : 123468503 Upper Moreland Township SD

Printed 12/14/2022 4:46:14 PM

Internal Service Fund (60)

1110 Regular Programs

	<u>Elementary</u>	<u>Secondary</u>	<u>Federal</u>	<u>Total</u>
200 <u>Personnel Services – Employee Benefits</u>				
250 Unemployment Compensation				42,298.72
260 Workers' Compensation				244,957.82
270 Group Insurance – Self-Insurance				6,443,215.24
280 Other Post-Employment Benefits (OPEB)				338,188.41
Total Personnel Services – Employee Benefits				\$7,068,660.19
300 <u>Purchased Professional and Technical Services</u>				
330 Other Professional Services				22,522.50
Total Purchased Professional and Technical Services				\$22,522.50
Total 1110 Regular Programs				\$7,091,182.69

	<u>Food Service(51)</u>	<u>Child Care Operations(52)</u>	<u>Other Enterprise(58)</u>	<u>Internal Service(60)</u>	<u>Total</u>
1000 <u>Instruction</u>					
1100 Regular Programs - Elementary / Secondary				7,091,182.69	7,091,182.69
Total Instruction				\$7,091,182.69	\$7,091,182.69
3000 <u>Operation of Non-Instructional Services</u>					
3100 Food Services	1,564,751.44				1,564,751.44
Total Operation of Non-Instructional Services	\$1,564,751.44				\$1,564,751.44
TOTAL ACTUAL EXPENDITURES & OTHER FINANCING USES	\$1,564,751.44			\$7,091,182.69	\$8,655,934.13

LEA : 123468503 Upper Moreland Township SD

Printed 12/14/2022 4:46:22 PM

Fund	School	School Number	Local Personnel	Local Nonpersonnel	State Personnel	State Nonpersonnel	Federal Personnel	Federal Nonpersonnel	Total	Explanation
10										
	Upper Moreland EI Sch	8492	24,540,241.00	2,478,367.00	1.00	1.00	786,317.00	781,741.00	28,586,668.00	
	Upper Moreland HS	3401	17,652,768.00	2,170,043.00	1.00	1.00	77,833.00	542,647.00	20,443,293.00	
	Upper Moreland MS	5249	4,502,447.00	888,569.00	1.00	1.00	62,750.00	378,862.00	5,832,630.00	
Total			46,695,456.00	5,536,979.00	3.00	3.00	926,900.00	1,703,250.00	54,862,591.00	