

■ Addition ■ Demolition ■ Remodel ■ New



Repurpose as a Pk-12

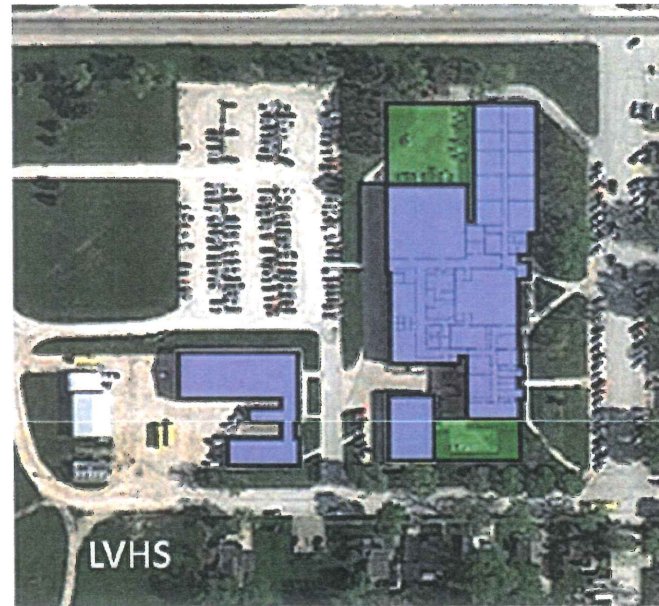
Plan Description:

- Sac City Elementary School as PK-12

■ Addition ■ Demolition ■ Remodel ■ New



Repurpose as a Pk-6 (600)

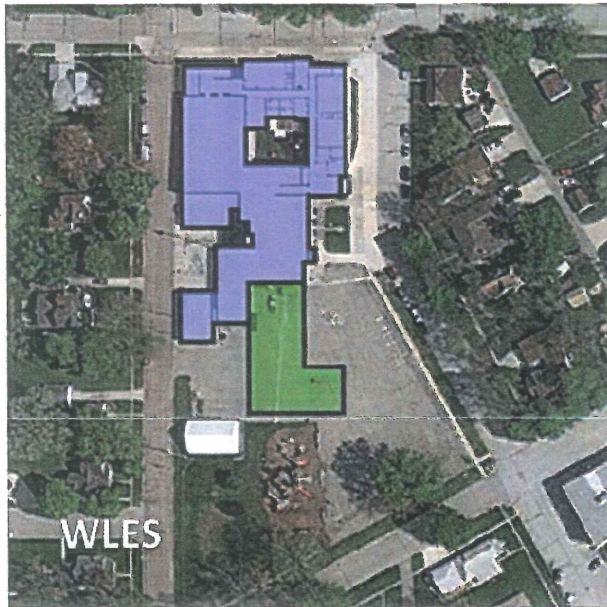


Repurpose as a 7-12

Plan Description:

- Wall Lake Elementary School as PK-6 for 600 students
- Lake View High School as 7-12

■ Addition ■ Demolition ■ Remodel ■ New



Repurpose as a Pk-6 (600)



Repurpose as a 7-12

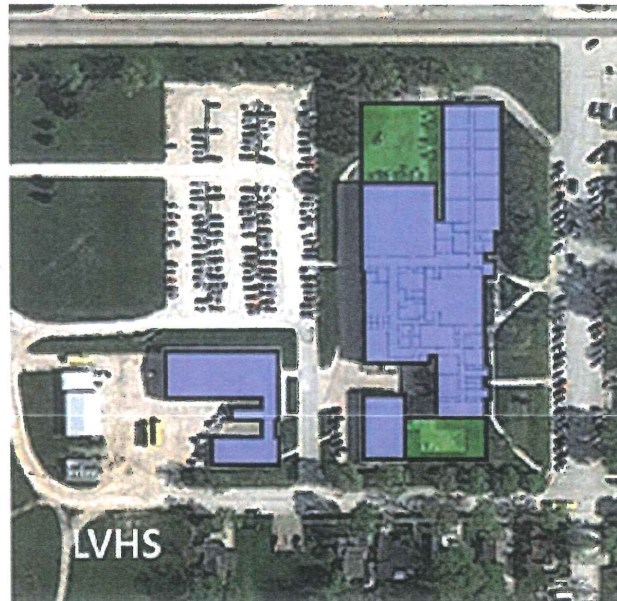
Plan Description:

- Wall Lake Elementary School as PK-6 for 600 students
- Sac City Elementary School as 7-12

■ Addition ■ Demolition ■ Remodel ■ New



Repurpose Pk-6 (600)



Repurpose as a 7-12

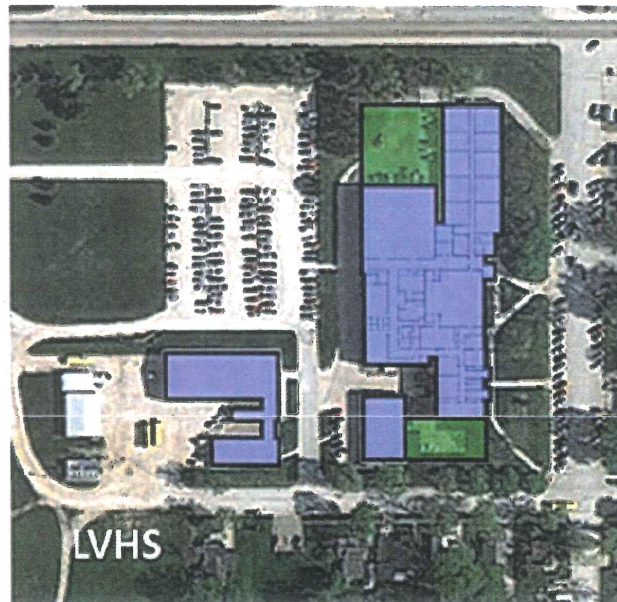
Plan Description:

- Sac City Elementary School as PK-6 for 600 students
- Lake View High School as 7-12

■ Addition ■ Demolition ■ Remodel ■ New



Repurpose as a PK-K, 1-6



Repurpose as a PK-K, 7-12

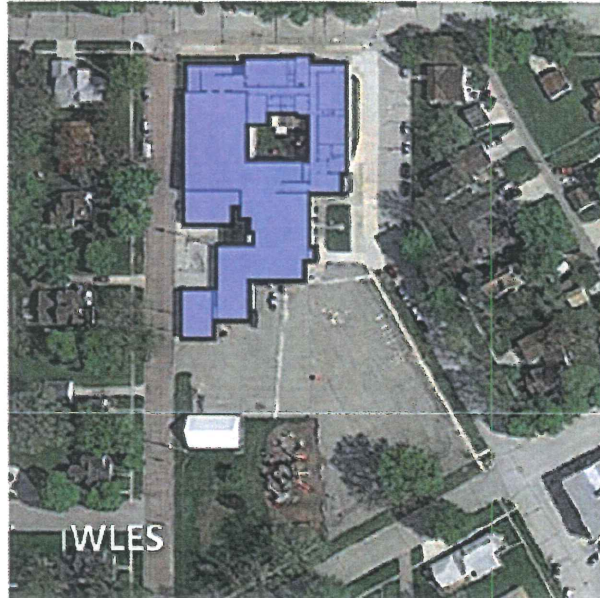
Plan Description:

- Sac City Elementary as PK-K and 1-6
- Lake View High School as PK-K and 7-12

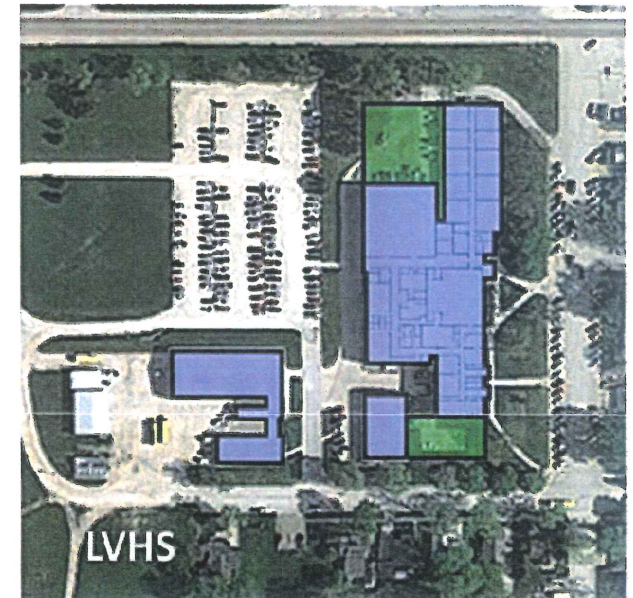
■ Addition ■ Demolition ■ Remodel ■ New



Repurpose as a Pk-6 (300)



Repurpose as a Pk-6 (300)



Repurpose as a 7-12

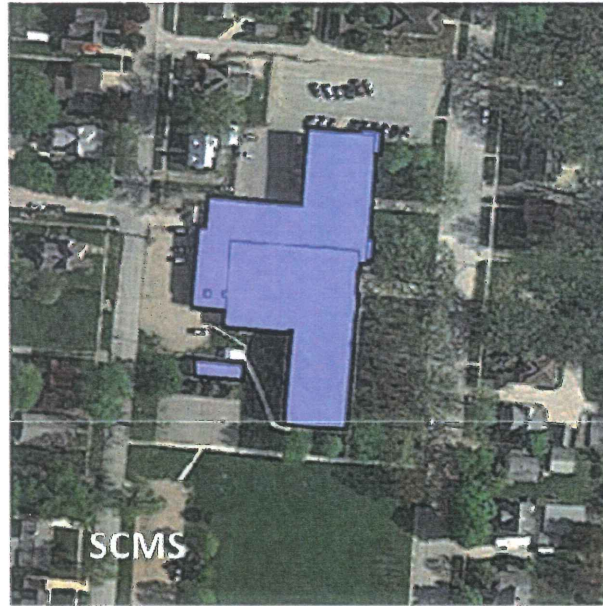
Plan Description:

- Sac City Elementary School as PK-6 for 300 students
- Wall Lake Elementary School as PK-6 for 300 students
- Lake View High School as 7-12

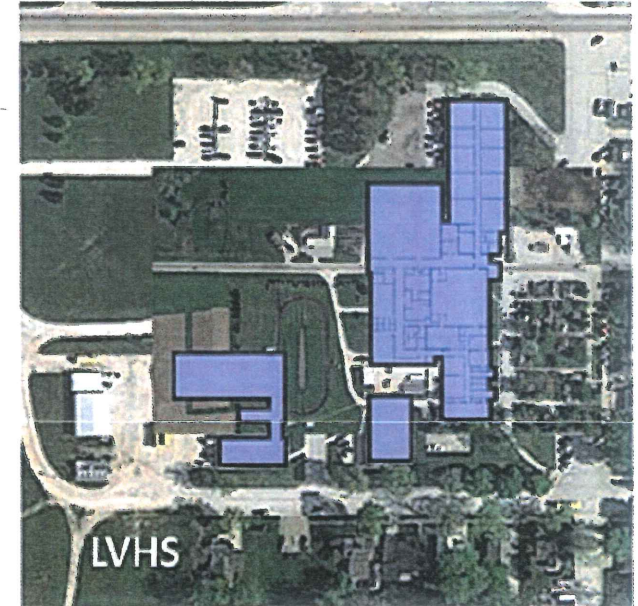
■ Addition ■ Demolition ■ Remodel ■ New



Repurpose as a Pk-5



Repurpose as a 6-8



9-12

Plan Description:

- Sac City Elementary School as PK-5
- Sac City Middle School as 6-8
- Lake View High School as 9-12

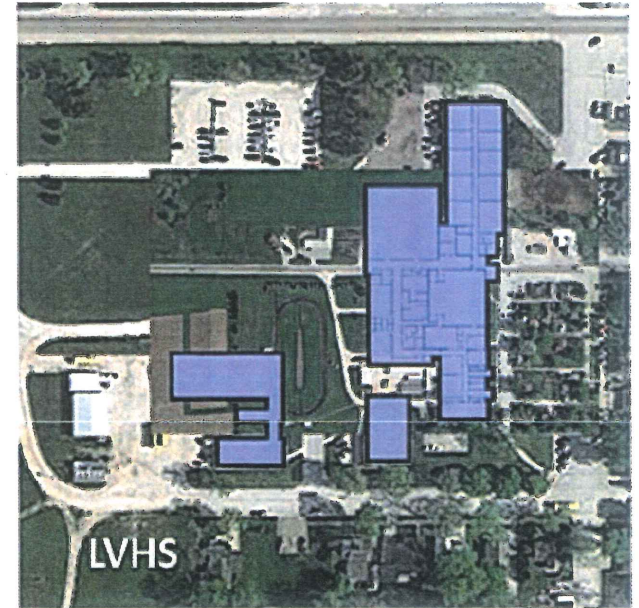
■ Addition ■ Demolition ■ Remodel ■ New



Repurpose as a Pk-5



Repurpose as a 6-8



9-12

Plan Description:

- Sac City Elementary School as PK-5
- Wall Lake Elementary School as 6-8
- Lake View High School as 9-12

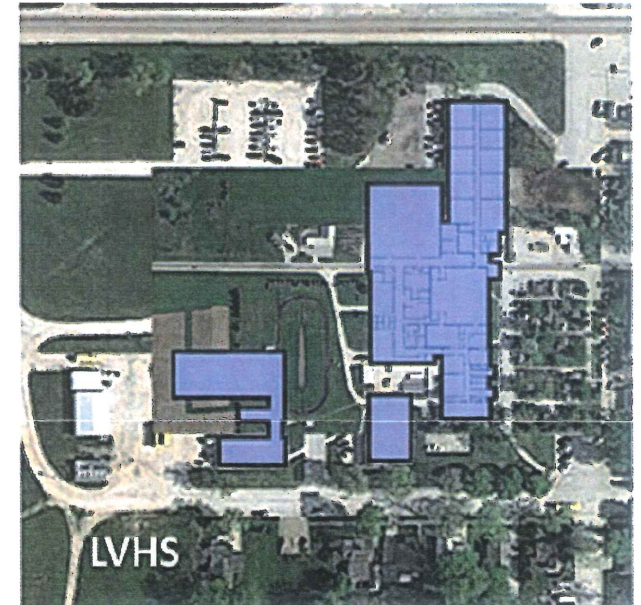
■ Addition ■ Demolition ■ Remodel ■ New



PK-4



5-8



9-12

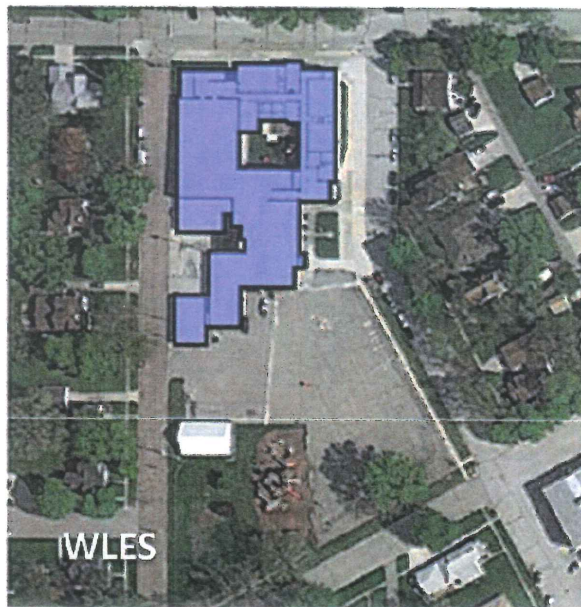
Plan Description:

- Sac City Elementary School as PK-4
- Sac City Middle School as 5-8
- Lake View High School as 9-12

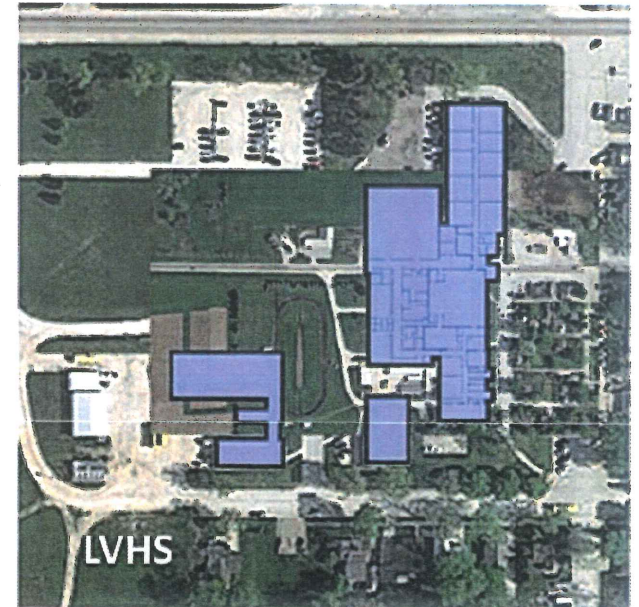
■ Addition ■ Demolition ■ Remodel ■ New



PK-4



Repurpose as a 5-8



9-12

Plan Description:

- Sac City Elementary School as PK-4
- Wall Lake Elementary School as 5-8
- Lake View High School as 9-12

■ Addition ■ Demolition ■ Remodel ■ New



PK-4



Repurpose as a 5-8



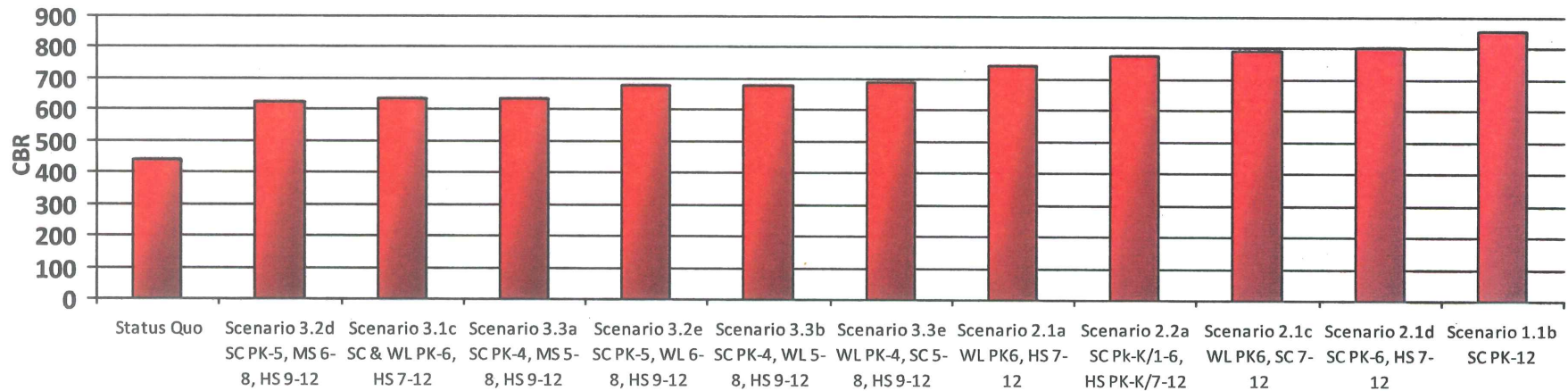
9-12

Plan Description:

- Wall Lake Elementary School as PK-4
- Sac City Elementary School as 5-8
- Lake View High School as 9-12

Scenario Summary

Cost Benefit Ratio Comparison



Scenario Name	Construction Costs	Operating Costs	Life Cycle Costs	Square Footage	Educational Adequacy	CBR
Scenario 1.1b SC PK-12	\$37,439,783.38	\$53,616,931.17	\$91,056,714.54	189,400	91.6	854.6
Scenario 2.1a WL PK6, HS 7-12	\$29,404,203.19	\$56,433,452.80	\$85,837,655.99	195,800	76.7	745.2
Scenario 2.1c WL PK6, SC 7-12	\$29,880,407.94	\$56,346,300.53	\$86,226,708.47	195,800	82.4	793.6
Scenario 2.1d SC PK-6, HS 7-12	\$25,978,528.56	\$56,733,602.41	\$82,712,130.97	194,200	79.8	800.4
Scenario 2.2a SC Pk-K/1-6, HS PK-K/7-12	\$27,477,334.31	\$58,253,757.24	\$85,731,091.56	199,000	80.2	777.1
Scenario 3.1c SC & WL PK-6, HS 7-12	\$27,136,722.06	\$71,566,461.21	\$98,703,183.27	239,600	75.9	632.8
Scenario 3.2d SC PK-5, MS 6-8, HS 9-12	\$27,992,355.00	\$70,821,555.51	\$98,813,910.51	235,300	74.8	622.7
Scenario 3.2e SC PK-5, WL 6-8, HS 9-12	\$26,183,457.50	\$66,161,622.38	\$92,345,079.88	226,400	76.1	676.4
Scenario 3.3a SC PK-4, MS 5-8, HS 9-12	\$28,444,951.25	\$69,776,627.20	\$98,221,578.45	232,500	75.6	633.8
Scenario 3.3b SC PK-4, WL 5-8, HS 9-12	\$26,325,944.50	\$65,653,065.97	\$91,979,010.47	223,600	75.9	678.8
Scenario 3.3e WL PK-4, SC 5-8, HS 9-12	\$26,953,463.00	\$64,910,706.83	\$91,864,169.83	221,100	76.8	688.5
Status Quo	\$10,025,729.00	\$96,043,835.46	\$106,069,564.46	293,600	64.0	440.5