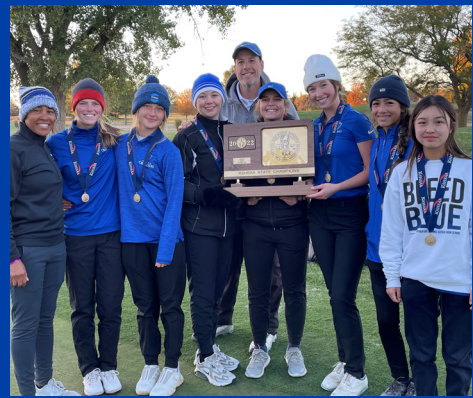
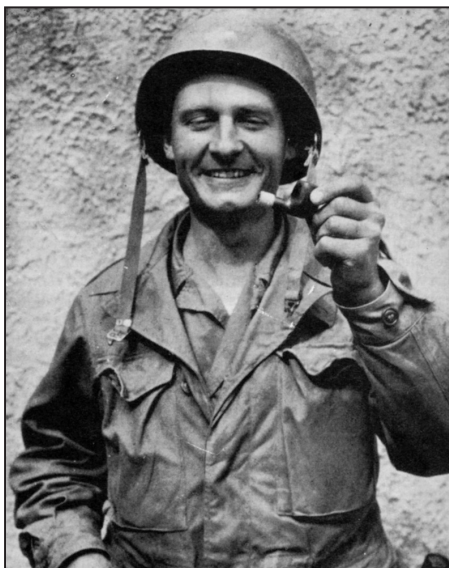


# Kapaun Mt. Carmel CATHOLIC HIGH SCHOOL

## Program of Studies: 2023-2024





*Fr. Kapaun, pray for us!*

## **WELCOME TO KMC!**

In the pages that follow, you will find a basic introduction to the educational philosophy, curriculum, goals and structure of Kapaun Mt. Carmel Catholic High School. The administration, faculty and staff of KMC are committed to providing our students with the finest education possible. We invite you to become a part of our growing community. Here at KMC, the love of life, the challenges of learning and Catholic tradition go hand-in-hand. I personally invite you to join us in our dedication to the education and formation of the total person in the image of Jesus Christ.

God bless you,

A handwritten signature in cursive script that reads "Chris Bloomer".

**Mr. Chris Bloomer**  
Principal

# TABLE OF CONTENTS

Overview .....	4
Crusader Advocacy Program (CAP) .....	5
Counseling Department .....	5
Graduation Requirements.....	6
KMC 4-Year Plan.....	7
KMC Diploma Pathways .....	9
Grade Level Advancement.....	30
Diocesan Scholarship Programs .....	31
Regents Requirements.....	32
Testing .....	34
Cum Laude I.....	36
Cum Laude II.....	37
Concurrent College Credit .....	38
Communication Arts .....	39
English .....	42
Fine Arts.....	44
Mathematics .....	50
Business.....	53
Physical Education.....	54
Family & Consumer Science .....	56
Science.....	58
Social Science .....	65
Religion .....	67
World Language.....	69
Saint Gianna Catholic Health Academy .....	72
WSU Tech.....	73
Sr. Kathleen Gilbert, BVM, Teacher Academy.....	75
Peer Mentoring .....	75
Office Aide.....	76
Teacher Aide & Tutoring.....	76
Senior Free Hour .....	77

# AN OVERVIEW

Kapaun Mt. Carmel Catholic High School, a fully accredited, four year co-educational secondary school, has its roots in a small, all girls academy, opened in 1887 by the Sisters of Charity of the Blessed Virgin Mary. In 1900, this academy's name became **Mount Carmel Academy**, after the Mother House of the founding Sisters.

Kapaun Mt. Carmel Catholic High School is the result of a merger between Mount Carmel Academy and **Chaplain Kapaun Memorial High School**, an all boys school opened in 1956 on the east side of Wichita, Kansas. Chaplain Kapaun Memorial was named after Father Emil Kapaun, a priest of the Wichita Diocese who served as a Chaplain in the US Army during both World War II and the Korean War. Fr. Kapaun was captured as a POW in northern Korea in 1951 and died at the hands of his captors. In April, 2013, Fr. Kapaun was awarded the Congressional Medal of Honor for his valor, bravery and unfailing spirit of hope, strength and service to others.

Through its entire community, Kapaun Mt. Carmel carries on the rich spirit of Fr. Kapaun in its mission to *educate and form the total person in the image of Jesus Christ*. Our school seeks to instill in its students this spirit as it educates, forms and prepares them for their life beyond high school.

Kapaun Mt. Carmel has a faculty of 64, including two Sisters of the Immaculate Heart of Mary and one full time priest of the Diocese of Wichita, who teaches Religion and serves as the school's Chaplain. Kapaun Mt. Carmel maintains a support staff of 23, for a total of 90 full time employees.

All core curriculum courses are offered in standard and honors levels. Students with learning differences may also enroll in Learning Strategies to assist them with their academic work, and may do so for as many years as they choose.

Classes meet for 90 minutes on an A/B schedule. On A-days, classes 1, 2, 3, and 4 meet. On B-days, classes 5, 6, 7 and 8 meet. One week the schedule is A-B-A-B-A. The next week is B-A-B-A-B.

Business, Computer Science, Debate, English, Fine and Graphic Arts, Family and Consumer Science, Mathematics, Physical Education, Social Science, Science, Communication Arts, Religion, Vocal and Instrumental Music and World Language make up the KMC curriculum.

Grading periods occur every 4 ½ weeks, but the transcript records only semester grades. Grade point averages and class rank are computed on all subjects taken. The grading scale is shown on the transcript.

All Honors courses are designated on the student's transcript by the letter "H". Advanced Placement classes are labeled "AP". Accelerated courses in elective subjects are also available. Both offer enriched and challenging academic programs.

This **Program of Studies** has been developed to assist students and parents in making informed decisions during the registration process. Registration is an integral part of planning for the next school year, not only for the students, but also for the school. **Numbers of students in classes determine the number of required faculty members, and the number of sections offered for each course. For budgetary purposes, accuracy is of utmost importance.** Taking sufficient reflection time when proceeding through the registration process will assure that the student is enrolling in all classes required for graduation, and will prepare the student for success in college, chosen careers or lifetime interests. Registration for the upcoming school year begins in January. A class schedule verification form will be given to each student during the spring. At that time, changes may be made to the student's schedule.

# CRUSADER ADVOCACY PROGRAM (CAP)

The Crusader Advocacy Program, or CAP, is an advocacy program designed to create a family-centered approach to peer support and mentoring outside the normal classroom structure.

Not unlike our feeder schools that have a Teacher Advisory (TA) time, students with the Crusader Advocacy Program (CAP), are grouped by "Houses" and then into smaller groups referred to as "Families," with a faculty member as the family advisor, and meet daily.

Here are some CAP specifics:

- There are eight Houses, and each House is named after a saint.
- Each House includes eight smaller groups called Families, with one faculty member (not necessarily a teacher they currently have) as the family advisor.
- Each Family is a randomly selected mixed level group with approximately four freshmen, four sophomores, four juniors and four seniors.
- We have CAP sessions four days a week and students sit with their Families at the all school Mass every Wednesday.
- Each session is approximately 20 minutes built into our block schedule, with different topics and activities assigned during their time.
- Students will meet with their family to work on interpersonal skills, study skills, career/college readiness, wellness, faith building, and team building.

We want to offer the most comprehensive academic education, and through CAP, we continue to develop the "formation of total person." Being part of something is a key to being connected beyond the classroom, and CAP will form a consistency for students as they will stay with his/her Family for all four years of his/her high school career. Students will also build camaraderie with their peers from other grade levels, activities, sports or clubs.

No longer do classes compete against one another, rather, Houses will be combining forces. This creates a more even playing field for all the grades and allow every student to be a vital part of the Kapaun Mt. Carmel community. Freshmen work alongside seniors, thus creating mentorships and a bond that can only beget more participation so students do not feel their efforts are futile, thus eliminating the "seniors always win" mentality.

In addition to the mentioned benefits, we are also charged for CAP because we know, through surveys that nearly 20 percent of our students do not feel a connection to school life at KMC. While learning about math, science, history or language arts are noble pursuits, our mission here is to educate and form the total person in the image of Jesus Christ, inside and outside the classroom. We feel CAP is the best way to accomplish that mission, and the potential and possibilities are endless.

## COUNSELING DEPARTMENT

The Counseling Department is designed to assist students in their educational, vocational, social, and personal formation.

Students meet with the counselors for a variety of reasons. The student may wish to get acquainted or seek information that the counselor can provide. Through counseling, some of the difficulty students may experience with scheduling, homework, extracurricular activities or future plans, can be solved. The counselor also offers assistance in planning admission to college, making applications for scholarships and interpreting test scores. Counselors have also been trained to assist students with crisis situations or personal problems.

# GRADUATION REQUIREMENTS

AREA OF STUDY	NUMBER OF TOTAL CREDITS
Religion	4 credits
English	4 credits - must include English I, II, III and IV
Mathematics	3 credits - with ACT Math score of 22 or higher 4 credits - with ACT Math score of less than 22 must include Algebra I or higher and one credit taken in senior year
Science	3 credits - must include Biology
Social Science	3.5 credits - must include World History and 2 credits of U.S. History and .5 credit of American Government
Fine Arts	1 credit
Communication Arts	.5 credit
Physical Education	1 credit – must include P.E. I taken the Freshman or Sophomore year
Business	.5 credit of Computer Applications .5 credit of Career & Financial Planning
World Language	1 credit
Electives	5-6 credits – may include Learning Strategies
<b>Total Required Credits</b>	<b>28 credits</b>

Thirty-two credits are possible on the 8-block schedule.

**NOTE:** Graduation requirements for transfer students may be adjusted based on the former high school's requirements.

**\*\*KMC students may enroll in standard classes and/or honors classes depending upon their test scores, their preferences and/or their grades in prerequisite classes. For example, a student may enroll in all standard classes except world language where he/she takes honors language. Students should consult their counselor about moving into or out of honors or college preparatory classes.**

**\*\*\* Additional options exist for students with learning differences or an IEP. Please check with the Counseling Department for additional information regarding these educational options.**



# KMC SAMPLE FOUR-YEAR PLAN

GRADE LEVEL	COURSE	CREDIT
FRESHMAN	Religion	1.0
	English	1.0
	Mathematics	1.0
	Science	1.0
	World History	1.0
	Physical Education	1.0
	Computer Applications	.5
	Communication Arts	.5
	Electives	1.0
	<b>Total Credits</b>	<b>8.0</b>
SOPHOMORE	Religion	1.0
	English	1.0
	Mathematics	1.0
	Science	1.0
	U.S. History I	1.0
	Financial Planning	.5
	World Language	1.0
	Fine Arts	1.0
	Electives	.5
	<b>Total Credits</b>	<b>8.0</b>
JUNIOR	Religion	1.0
	English	1.0
	Mathematics	1.0
	Science	1.0
	U.S. History II	1.0
	World Language	1.0
	Electives	2.0
	<b>Total Credits</b>	<b>8.0</b>
SENIOR	Religion	1.0
	English	1.0
	American Government	.5
	Science	1.0
	Electives	2.5
	Elective(s) or *Free Hour	1.0 or 0
	Elective(s) or *Free Hour	1.0 or 0
	<b>Total Credits</b>	<b>8.0 or 6.0</b>

\* Requires parent/guardian permission

- Note: One credit of a Fine Arts elective, one-half credit of Computer Applications (KMC501), one-half credit of Career & Financial Planning (KMC513), and one-half credit of Communications are required for graduation from Kapau Mt. Carmel Catholic High School.

# SUGGESTED 4-YEAR PLAN WORKSHEET

28 Credits Required for Graduation

Minimum Requirements	Subject	FRESHMAN	SOPHOMORE	JUNIOR	SENIOR
4	RELIGION	Salvation History (.5) Morality (.5)	New Testament (.5) Prayer & Liturgy (.5)	Church History (.5) Faith & Reason (.5)	Christian Vocation (.5) Catholic Social Teaching (.5)
4	ENGLISH	English I	English II	English III	English IV
3 (ACT score of 22+) 4 (ACT score below 22)	MATHEMATICS	Algebra I	Geometry	Algebra II	Algebra III, Intermediate Algebra or higher
3	SCIENCE	Freshman Physics/Freshman Chemistry	Biology	Chemistry	Physics or Anatomy & Physiology
3.5	SOCIAL SCIENCE	World History	US History I	US History II	American Government (.5)
1	FINE ARTS				
.5	COMMUNICATIONS				
1	PHYSICAL ED.	P.E. 1			
1	BUSINESS	Computer Applications (.5) Career & Financial	Planning (.5)		
1	WORLD LANGUAGE				

# PATHWAYS AT A GLANCE

Complete information on Pathway choices, including class descriptions and prerequisites, may be found in the Program of Studies.

## ST. PATRICK ENGINEERING PATHWAY

FRESHMAN	SOPHOMORE	JUNIOR	SENIOR
Intro to Engineering/Design	Drafting I Principles of Engineering World Language I	Drafting II OR CATIA	Trigonometry/Intro to Calc* Physics Engineering Design & Development
*The Intro to Calculus requirement may be waived if a student enrolls in Calculus I. See Program of Studies for prerequisites. Completion of this pathway also fulfills WSU's Project Lead the Way requirements.			

## ST. GIANNA HEALTHCARE PATHWAY

FRESHMAN	SOPHOMORE	JUNIOR	SENIOR
Freshmen Chemistry Freshmen Physics	Biology Child Development	Chemistry Anatomy & Physiology	St. Gianna Health Academy

## ST. JOSEPH WSU TECH PATHWAY

FRESHMAN	SOPHOMORE	JUNIOR	SENIOR
Communications Computer Applications World Language	Fine Arts (1 Credit) Financial Planning	Electives - work with your counselor for assistance in choices. (3 credits) WSU Tech may also begin; consult your counselor for details.	WSU Tech

## ST. MARGARET BUSINESS PATHWAY

FRESHMAN	SOPHOMORE	JUNIOR	SENIOR
Business Marketing Computer Applications	Financial Planning Youth Entrepreneurs	Web Design Business Economics Personal/Business Law	Accounting

## SR. KATHLEEN GILBERT, BVM EDUCATION PATHWAY

FRESHMAN	SOPHOMORE	JUNIOR	SENIOR
Communications	Fine Arts Electives	Parish Service Child Development Relationships	Sr. Kathleen Gilbert, BVM Teaching Academy Psychology

## ST. ISIDORE COMPUTER SCIENCES PATHWAY

FRESHMAN	SOPHOMORE	JUNIOR	SENIOR
Computer Applications	Intro to Computer Science Principles	Computer Science Principles Web Design	Advanced Computer Science A

## ST. CATHERINE OF BOLOGNA FINE ARTS PATHWAY

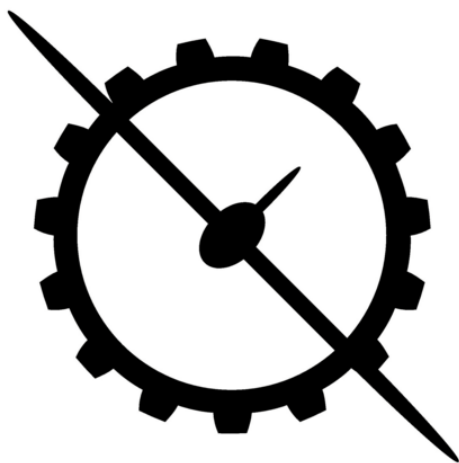
\*A student picks an emphasis in this pathway: Journalism, Music, Theatre or Visual Arts

EMPHASIS	FRESHMAN	SOPHOMORE	JUNIOR	SENIOR
<b>Required Classes</b>	Intro to Debate or Forensics (May be waived for students in the Journalism Emphasis)	World Language I	World Language II	World Language III
	<i>(Choose a half credit from the following:)</i> <i>(Choose one credit from the following:)</i> <i>(Choose one credit from the following:)</i> <i>(Choose one credit from the following:)</i>			
<b>Journalism</b>	Journalism 1	Photography or Mass Communications	Mass Communications, Yearbook, Journalism II or Photo Editors' Hour	Mass Communications, Yearbook, Journalism II or Photo Editors' Hour
<b>Music</b>	Band/Vocal Courses	Band/Vocal Courses	Music Appreciation or Band/Vocal Courses	Music Appreciation or Band/Vocal Courses
<b>Theatre</b>	Intro to Theatre	Acting I/Acting II or Stagecrafts	Acting I/Acting II or Stagecrafts	Acting I/Acting II or Stagecrafts
<b>Visual</b>	Intro to Art	2D Art/Ceramics	3D Art	Studio Art

\*NOTE: Students may work with the counselor to take the above classes during different years than listed if prerequisites are met.  
(Example: 3D Art may be taken Sophomore year if desired)

# ST. PATRICK

# ENGINEERING PATHWAY



## FRESHMAN YEAR

Intro to Engineering Design

## SOPHOMORE YEAR

Drafting I  
Principles of Engineering  
World Language I

## JUNIOR YEAR

Drafting II OR CATIA

## SENIOR YEAR

Trigonometry/Intro to Calculus  
Physics  
Engineering Design & Development

\*KMC freshman through junior students are required to be enrolled in eight total credits each year. KMC senior students may enroll in up to four Free Hours (no credit) if they meet all requirements to do so.

# THE ST. PATRICK ENGINEERING PATHWAY

KMC & KBOR MINIMUM CREDITS		FRESHMAN YEAR		SOPHOMORE YEAR		JUNIOR YEAR		SENIOR YEAR	
4	<b>English</b>	English I Honors English I	1 1	English II Honors English II	1 1	English III Honors English III	1 1	English IV Honors English IV	1 1
4	<b>Religion</b>	Salvation History Christian Morality	.5 .5	Prayer & Spirituality Sacraments & Liturgy	.5 .5	Church History Faith & Reason	.5 .5	Catholic Social Teaching Christian Vocations	.5 .5
4	<b>Math</b>	Algebra I Honors Algebra I Honors Geometry Honors Algebra II	1 1 1 1	Geometry Honors Geometry Honors Algebra II Trigonometry (.5)/ Intro to Calculus (.5)	1 1 1 1	Algebra II Honors Algebra II Trigonometry (.5)/ Intro to Calculus (.5) AP Calculus I	1 1 1 1	Trigonometry (.5)/ Intro to Calculus (.5)♥ Trigonometry (.5)/ Intro to Calculus (.5) AP Calculus I AP Calculus II	1 1 1 1 1
3	<b>Science</b>	Freshman Chemistry Freshman Physics Honors Freshman Chemistry Honors Freshman Physics Honors Biology♥	.5 .5 .5 .5 1	Biology Honors Biology Honors Chemistry♥	1 1 1	Chemistry Honors Chemistry Honors Physics*♥	1 1 1	Physics♥ Honors Physics♥	.5 .5
3.5	<b>Social Science</b>	World History Honors World History	1 1	US History I Honors US History I	1 1	US History II AP US History II	1 1	American Government Honors American Government	.5 .5
1	<b>Physical Education</b>	Boys PE Girls PE	1 1						
.5	<b>Communications</b>	Business Marketing Communications	.5 .5						
1	<b>Fine Arts</b>			Drafting I♥	1	Drafting II♥	1		
1	<b>Business</b>	Computer Applications	.5	Career & Financial Planning	.5				
1	<b>World Language</b>			Spanish I French I Latin I	1 1 1				
	<b>Elective</b>			Elective	.5			Elective	3
6	<b>PLTW</b>	Intro to Engineering Design♥	1	Principles of Engineering♥	1	CATIA♥ Computer Science Robotics	1 1 1	Engineering Design & Development♥ Robotics	1 1

♥ Required elective for this track (Except during junior year, where either only Drafting II OR CATIA fulfill the requirement).

Please make sure to check prerequisite courses while selecting future classes.

# ST. ISIDORE

# COMPUTER SCIENCES PATHWAY



## FRESHMAN YEAR

Computer Applications

## SOPHOMORE YEAR

Intro to Computer Science

## JUNIOR YEAR

Computer Science Principles  
Web Design

## SENIOR YEAR

Advanced Computer Science A  
Teacher's Aide (for IT)

\*KMC freshman through junior students are required to be enrolled in eight total credits each year. KMC senior students may enroll in up to four Free Hours (no credit) if they meet all requirements to do so.

# ST. ISIDORE COMPUTER SCIENCES PATHWAY

KMC & KBOR MINIMUM CREDITS		FRESHMAN YEAR	SOPHOMORE YEAR	JUNIOR YEAR	SENIOR YEAR
4	<b>English</b>	English I (Split Block: Must be concurrently enrolled in elective Learning Strategies). English I Honors English I	English II Honors English II	English III Honors English III	English IV Honors English IV
4	<b>Religion</b>	Salvation History Christian Morality	Prayer & Spirituality Sacraments & Liturgy	Church History Faith & Reason	Catholic Social Teaching Christian Vocations
4	<b>Math</b>	Principles of Math (Split Block: Must be concurrently enrolled in Algebra I & Conceptual Physical Science) Algebra I Honors Algebra I Honors Geometry	Geometry Honors Geometry Honors Algebra II	Algebra II Honors Algebra II Trigonometry (.5)/ Intro to Calculus (.5)	College Algebra Statistics AP Calculus I
3	<b>Science</b>	Conceptual Physical Science (Split Block: Must be concurrently enrolled in Principles of Math & Algebra I) Freshman Chemistry Freshman Physics Honors Freshman Chemistry H Freshman Physics	Biology Honors Biology	Chemistry Anatomy & Physiology Environmental Science Honors Chemistry AP Biology	Environmental Science Chemistry Honors Physics AP Biology
3.5	<b>Social Science</b>	World History Honors World History	US History I Honors US History I	US History II AP US History II	American Government Honors American Government
1	<b>Physical Education</b>	Boys PE Girls PE			
.5	<b>Communications</b>	Business Marketing			
1	<b>Fine Arts</b>			Intro to Art 2D, 3D, or Ceramics Drafting 1 Theatre Introduction Acting I, Acting II, or Stagecrafts Band Vocal Music Course Music Appreciation History of Rock-n-Roll	
1	<b>Business</b>	Computer Applications	Career & Financial Planning	Web Design♥	
1	<b>World Language</b>	Spanish I French I Latin I			
	<b>Elective</b>		Intro to Computer Science♥	Computer Science 1 Principles♥	Advanced Computer Science A♥ Teacher's Aide♥

♥ Required elective for this track.

Please make sure to check prerequisite courses while selecting future classes.

# ST. GIANNA

# HEALTHCARE PATHWAY



## FRESHMAN YEAR

Freshman Chemistry  
Freshman Physics

## SOPHOMORE YEAR

Biology  
Child Development

## JUNIOR YEAR

Chemistry

## SENIOR YEAR

St. Gianna Health Academy  
Anatomy & Physiology OR  
AP Biology

\*KMC freshman through junior students are required to be enrolled in eight total credits each year. KMC senior students may enroll in up to four Free Hours (no credit) if they meet all requirements to do so.

# ST. GIANNA HEALTH ACADEMY & HEALTH CARE PATHWAY

KMC & KBOR MINIMUM CREDITS		FRESHMAN YEAR	SOPHOMORE YEAR	JUNIOR YEAR	SENIOR YEAR
4	<b>English</b>	English I (Split Block: Must be concurrently enrolled in elective Learning Strategies.) English I Honors English I	English II Honors English II	English III Honors English III	English IV Honors English IV
4	<b>Religion</b>	Salvation History Christian Morality	Prayer & Spirituality Sacraments & Liturgy	Church History Faith & Reason	Catholic Social Teaching Christian Vocations
4	<b>Math</b>	Principles of Math (Split Block: Must be concurrently enrolled in Algebra I & Conceptual Physical Science) Algebra I Honors Algebra I	Geometry Honors Geometry	Algebra II Honors Algebra II	Trigonometry Intro to Calculus College Algebra Statistics
3	<b>Science</b>	Conceptual Physical Science (Split Block: Must be concurrently enrolled in Principles of Math & Algebra I) Freshman Chemistry Freshman Physics Honors Freshman Chemistry H Freshman Physics	Biology Honors Biology Honors Chemistry	Chemistry Honors Chemistry Anatomy & Physiology	Anatomy & Physiology♥ Honors Anatomy & Physiology AP Biology♥
3.5	<b>Social Science</b>	World History Honors World History	US History I Honors US History I	US History II AP US History II	American Government Honors American Government
1	<b>Physical Education</b>	Boys PE Girls PE			
.5	<b>Communications</b>	Business Marketing Communications Introduction to Debate Forensics Mass Communications			
1	<b>Fine Arts</b>		Intro to Art 2D, 3D, or Ceramics Drafting 1 Intro to Theatre Acting I, Acting II, or Stagecrafts Band Vocal Music Course Music Appreciation History of Rock-n-Roll		
1	<b>Business</b>	Computer Applications	Career & Financial Plang		
1	<b>World Language</b>	Spanish I French I Latin I	Spanish II French II Latin II		
	<b>St. Gianna Health Academy Courses</b>		Child Development♥		SGHA♥
	<b>Elective</b>		Elective	Elective	Elective

♥ Required elective for this track (Either AP Biology OR Anatomy and Physiology fulfill the requirement).

Please make sure to check prerequisite courses while selecting future classes.

# ST. JOSEPH

# WSU TECH PATHWAY



## FRESHMAN YEAR

Gen. Ed. Requirements:

- Communications
- Computer Applications
- World Language

## SOPHOMORE YEAR

Gen. Ed. Requirements:

- Fine Arts
- Career & Financial  
Planning

## JUNIOR YEAR

WSU Tech (off-site)

## SENIOR YEAR

WSU Tech (off-site)

\*KMC freshman through junior students are required to be enrolled in eight total credits each year. KMC senior students may enroll in up to four Free Hours (no credit) if they meet all requirements to do so.

# ST. JOSEPH WSU TECH PATHWAY

KMC & KBOR MINIMUM CREDITS		FRESHMAN YEAR	SOPHOMORE YEAR	JUNIOR YEAR	SENIOR YEAR
4	<b>English</b>	English I (Split Block: Must be concurrently enrolled in elective Learning Strategies.) English I 1 Honors English I 1	English II 1 Honors English II 1	English III 1 Honors English III 1	English IV 1 Honors English IV 1
4	<b>Religion</b>	Salvation History .5 Christian Morality .5	Prayer & Spirituality .5 Sacraments & Liturgy .5	Church History .5 Faith & Reason .5	Catholic Social Teaching .5 Christian Vocations .5
4	<b>Math</b>	Principles of Math (Split Block: Must be concurrently enrolled in Algebra I & Conceptual Physical Science) Algebra I 1 Honors Algebra I 1	Geometry 1 Honors Geometry 1 1	Algebra II 1 Honors Algebra II 1	Algebra III♣ .5 Intermediate Algebra♣ .5
3	<b>Science</b>	Freshman Chemistry .5 Freshman Physics .5	Biology 1		Chemistry♣ 1
3.5	<b>Social Science</b>	World History 1 Honors World History 1	US History I 1 Honors US History I 1	US History II 1 AP US History II 1	American Government .5 Honors American Government .5
1	<b>Physical Education</b>	Boys PE 1 Girls PE 1			
.5	<b>Communications</b>	Business Marketing .5 Communications .5 Introduction to Debate .5 Forensics .5 Mass Communications 1			
1	<b>Fine Arts</b>		Intro to Art .5 2D, 3D, or Ceramics .5 Drafting 1 1 Intro to Theatre .5 Acting I, Acting II, or Stagecrafts .5 Band 1 Vocal Music Course 1 Music Appreciation .5 History of Rock-n-Roll .5		
1	<b>Business</b>	Computer Applications .5	Career & Financial Plang .5		
1	<b>World Language</b>	Spanish I 1 French I 1 Latin I 1			
	<b>WATC</b>			WSU Tech♥ 4	WSU Tech♥ 4
	<b>Elective</b>	Elective 1	Elective .5	Elective 3	Elective .5

♥ Required elective for this track.

Please make sure to check prerequisite courses while selecting future classes.

# ST. MARGARET

# BUSINESS PATHWAY



## FRESHMAN YEAR

Business Marketing  
Computer Applications

## SOPHOMORE YEAR

Career & Financial Planning  
Web Design

## JUNIOR YEAR

Business Economics  
Personal/Business Law

## SENIOR YEAR

Accounting  
Youth Entrepreneurs

\*KMC freshman through junior students are required to be enrolled in eight total credits each year. KMC senior students may enroll in up to four Free Hours (no credit) if they meet all requirements to do so.

# ST. MARGARET BUSINESS PATHWAY

KMC & KBOR MINIMUM CREDITS		FRESHMAN YEAR	SOPHOMORE YEAR	JUNIOR YEAR	SENIOR YEAR
4	<b>English</b>	English I (Split Block: Must be concurrently enrolled in elective Learning Strategies.) 1 English I 1 Honors English I 1	English II 1 Honors English II 1	English III 1 Honors English III 1	English IV 1 Honors English IV 1
4	<b>Religion</b>	Salvation History .5 Christian Morality .5	Prayer & Spirituality .5 Sacraments & Liturgy .5	Church History .5 Faith & Reason .5	Catholic Social Teaching .5 Christian Vocations .5
4	<b>Math</b>	Principles of Math (Split Block: Must be concurrently enrolled in Algebra I & Conceptual Physical Science) 1 Algebra I 1 Honors Algebra I 1 Honors Geometry 1	Geometry 1 Honors Geometry 1 Honors Algebra II 1	Algebra II 1 Honors Algebra II 1 Trigonometry (.5)/ Intro to Calculus (.5) 1	College Algebra .5 Statistics .5 AP Calculus I 1
3	<b>Science</b>	Conceptual Physical Science (Split Block: Must be concurrently enrolled in Principles of Math & Algebra I) 1 Freshman Chemistry .5 Freshman Physics .5 Honors Freshman Chemistry .5 H Freshman Physics .5	Biology 1 Honors Biology 1	Chemistry 1 Anatomy & Physiology 1 Environmental Science 1 Honors Chemistry 1 AP Biology 1	Anatomy & Physiology 1 Environmental Science 1 Chemistry 1 Honors Physics 1 AP Biology 1
3.5	<b>Social Science</b>	World History 1 Honors World History 1	US History I 1 Honors US History I 1	US History II 1 AP US History II 1	American Government .5 Honors American Government .5
1	<b>Physical Education</b>	Boys PE 1 Girls PE 1			
.5	<b>Communications</b>	Business Marketing .5			
1	<b>Fine Arts</b>			Intro to Art .5 2D, 3D, or Ceramics .5 Drafting 1 1 Intro to Theatre .5 Acting I, Acting II, or Stagecrafts .5 Band 1 Vocal Music Course 1 Music Appreciation .5 History of Rock-n-Roll .5	
1	<b>Business</b>	Computer Applications .5	Career & Financial Planning♥ .5 Web Design♥ 1	Business Economics♥ .5 Personal/Business Law♥ .5	Accounting ♥ 1 Youth Entrepreneurs ♥ .5
1	<b>World Language</b>	Spanish I 1 French I 1 Latin I 1	Spanish II 1 French II 1 Latin II 1		
	<b>Elective</b>		Elective .5	Elective .5	Elective 2.5

♥ Required elective for this track.

Please make sure to check prerequisite courses while selecting future classes.

# ST. CATHERINE OF BOLOGNA

# FINE ARTS PATHWAY MUSIC



## **FRESHMAN YEAR**

**Band/Vocal Courses**

## **SOPHOMORE YEAR**

**Band/Vocal Courses**

## **JUNIOR YEAR**

**Music Appreciation OR  
Band/Vocal Courses**

## **SENIOR YEAR**

**History of Rock & Roll OR  
Band/Vocal Courses**

**\*KMC freshman through junior students are required to be enrolled in eight total credits each year. KMC senior students may enroll in up to four Free Hours (no credit) if they meet all requirements to do so.**

# ST. CATHERINE OF BOLOGNA FINE ARTS PATHWAY (Music Emphasis)

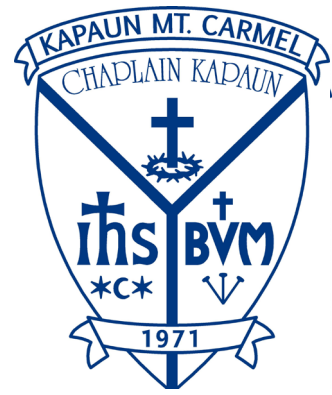
KMC & KBOR MINIMUM CREDITS		FRESHMAN YEAR	SOPHOMORE YEAR	JUNIOR YEAR	SENIOR YEAR
4	<b>English</b>	English I (Split Block: Must be concurrently enrolled in elective Learning Strategies.) English I 1 Honors English I 1	English II 1 Honors English II 1	English III 1 Honors English III 1	English IV 1 Honors English IV 1
4	<b>Religion</b>	Salvation History .5 Christian Morality .5	Prayer & Spirituality .5 Sacraments & Liturgy .5	Church History .5 Faith & Reason .5	Catholic Social Teaching .5 Christian Vocations .5
3	<b>Math</b>	Principles of Math (Split Block: Must be concurrently enrolled in Algebra I & Conceptual Physical Science) Algebra I 1 Honors Algebra I 1 Honors Geometry 1	Geometry 1 Honors Geometry 1 Honors Algebra II 1	Algebra II 1 Honors Algebra II 1 Trigonometry (.5) / Intro to Calculus (.5) 1	College Algebra .5 Statistics .5 AP Calculus I 1
3	<b>Science</b>	Conceptual Physical Science (Split Block: Must be concurrently enrolled in Principles of Math & Algebra I) Freshman Chemistry .5 Freshman Physics .5 Honors Freshman Chemistry .5 H Freshman Physics .5	Biology 1 Honors Biology 1	Chemistry 1 Anatomy & Physiology 1 Environmental Science 1 Honors Chemistry 1	Anatomy & Physiology 1 Environmental Science 1 Chemistry 1 Honors Physics 1
3.5	<b>Social Science</b>	World History 1 Honors World History 1	US History I 1 Honors US History I 1	US History II 1 AP US History II 1	American Government .5 Honors American Government .5
1	<b>Physical Education</b>	Boys PE 1 Girls PE 1			
.5	<b>Communications</b>	Introduction to Debate .5 Forensics .5			
1	<b>Fine Arts</b>	Band♥ 1 Vocal Courses♥ 1	Band♥ 1 Vocal Courses♥ 1	Music Appreciation♥ .5 Band♥ 1 Vocal Courses♥ 1	History of Rock n' Roll♥ .5 Band♥ 1 Vocal Courses♥ 1
1	<b>Business</b>	Computer Applications .5	Career & Financial Plang .5		
1	<b>World Language</b>		Spanish I 1 French I 1 Latin I 1	Spanish II 1 French II 1 Latin II 1	Spanish III 1 French III 1 Latin III 1
	<b>Elective</b>			Elective .5	Elective 3.5

♥ Required elective for this track. A student would select either Vocal Music or Band. Four total credits in either emphasis are required for this track. Music Appreciation and History of Rock n' Roll count as one credit for either emphasis.

Please make sure to check prerequisite courses while selecting future classes.

# ST. CATHERINE OF BOLOGNA

# FINE ARTS PATHWAY THEATRE



## FRESHMAN YEAR

Intro to Theatre

## SOPHOMORE YEAR

Acting I/II OR  
Stagecrafts

## JUNIOR YEAR

Acting I/II OR  
Stagecrafts

## SENIOR YEAR

Acting I/II OR  
Stagecrafts

\*KMC freshman through junior students are required to be enrolled in eight total credits each year. KMC senior students may enroll in up to four Free Hours (no credit) if they meet all requirements to do so.

# ST. CATHERINE OF BOLOGNA FINE ARTS PATHWAY (Theatre Emphasis)

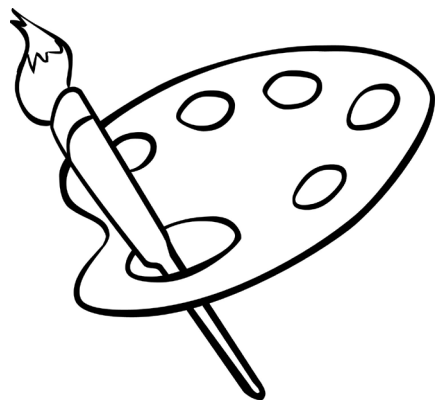
KMC & KBOR MINIMUM CREDITS		FRESHMAN YEAR	SOPHOMORE YEAR	JUNIOR YEAR	SENIOR YEAR
4	<b>English</b>	English I (Split Block: Must be concurrently enrolled in elective Learning Strategies.) 1 English I 1 Honors English I 1	English II 1 Honors English II 1	English III 1 Honors English III 1	English IV 1 Honors English IV 1
4	<b>Religion</b>	Salvation History .5 Christian Morality .5	Prayer & Spirituality .5 Sacraments & Liturgy .5	Church History .5 Faith & Reason .5	Catholic Social Teaching .5 Christian Vocations .5
3	<b>Math</b>	Principles of Math (Split Block: Must be concurrently enrolled in Algebra I & Conceptual Physical Science) 1 Algebra I 1 Honors Algebra I 1 Honors Geometry 1	Geometry 1 Honors Geometry 1 Honors Algebra II 1	Algebra II 1 Honors Algebra II 1 Trigonometry (.5) / Intro to Calculus (.5) 1	College Algebra .5 Statistics .5 AP Calculus I 1
3	<b>Science</b>	Conceptual Physical Science (Split Block: Must be concurrently enrolled in Principles of Math & Algebra I) 1 Freshman Chemistry .5 Freshman Physics .5 Honors Freshman Chemistry .5 H Freshman Physics .5	Biology 1 Honors Biology 1	Chemistry 1 Anatomy & Physiology 1 Environmental Science 1 Honors Chemistry 1	Anatomy & Physiology 1 Environmental Science 1 Chemistry 1 Honors Physics 1
3.5	<b>Social Science</b>	World History 1 Honors World History 1	US History I 1 Honors US History I 1	US History II 1 AP US History II 1	American Government .5 Honors American Government .5
1	<b>Physical Education</b>	Boys PE 1 Girls PE 1			
.5	<b>Communications</b>	Introduction to Debate .5 Forensics .5			
1	<b>Fine Arts</b>	Intro to Theatre♥ .5	Acting 1/Acting II♥ 1	Stagecrafts♥ 1	
1	<b>Business</b>	Computer Applications .5	Career & Financial Plang .5		
1	<b>World Language</b>		Spanish I 1 French I 1 Latin I 1	Spanish II 1 French II 1 Latin II 1	Spanish III 1 French III 1 Latin III 1
	<b>Elective</b>			Elective .5	Elective 3.5

♥ Required elective for this track.

Please make sure to check prerequisite courses while selecting future classes.

# ST. CATHERINE OF BOLOGNA

# FINE ARTS PATHWAY VISUAL



## FRESHMAN YEAR

Intro to Art

## SOPHOMORE YEAR

2D Art/Ceramics

## JUNIOR YEAR

3D Art

## SENIOR YEAR

Studio Art

\*KMC freshman through junior students are required to be enrolled in eight total credits each year. KMC senior students may enroll in up to four Free Hours (no credit) if they meet all requirements to do so.

# ST. CATHERINE OF BOLOGNA FINE ARTS PATHWAY (Visual Arts Emphasis)

KMC & KBOR MINIMUM CREDITS		FRESHMAN YEAR	SOPHOMORE YEAR	JUNIOR YEAR	SENIOR YEAR
4	<b>English</b>	English I (Split Block: Must be concurrently enrolled in elective Learning Strategies.) English I 1 Honors English I 1	English II 1 Honors English II 1	English III 1 Honors English III 1	English IV 1 Honors English IV 1
4	<b>Religion</b>	Salvation History .5 Christian Morality .5	Prayer & Spirituality .5 Sacraments & Liturgy .5	Church History .5 Faith & Reason .5	Catholic Social Teaching .5 Christian Vocations .5
3	<b>Math</b>	Principles of Math (Split Block: Must be concurrently enrolled in Algebra I & Conceptual Physical Science) Algebra I 1 Honors Algebra I 1 Honors Geometry 1	Geometry 1 Honors Geometry 1 Honors Algebra II 1	Algebra II 1 Honors Algebra II 1 Trigonometry (.5) / Intro to Calculus (.5) 1	College Algebra .5 Statistics .5 AP Calculus I 1
3	<b>Science</b>	Conceptual Physical Science (Split Block: Must be concurrently enrolled in Principles of Math & Algebra I) Freshman Chemistry .5 Freshman Physics .5 Honors Freshman Chemistry .5 H Freshman Physics .5	Biology 1 Honors Biology 1	Chemistry 1 Anatomy & Physiology 1 Environmental Science 1 Honors Chemistry 1	Anatomy & Physiology 1 Environmental Science 1 Chemistry 1 Honors Physics 1
3.5	<b>Social Science</b>	World History 1 Honors World History 1	US History I 1 Honors US History I 1	US History II 1 AP US History II 1	American Government .5 Honors American Government .5
1	<b>Physical Education</b>	Boys PE 1 Girls PE 1			
.5	<b>Communications</b>	Introduction to Debate .5 Forensics .5			
1	<b>Fine Arts</b>	Intro to Art♥ .5	2D/Ceramics♥ 1	3D Art Techniques♥ .5	Studio Art♥ 1
1	<b>Business</b>	Computer Applications .5	Career & Financial Plang .5		
1	<b>World Language</b>		Spanish I 1 French I 1 Latin I 1	Spanish II 1 French II 1 Latin II 1	Spanish III 1 French III 1 Latin III 1
	<b>Elective</b>			Elective .5	Elective 3.5

♥ Required elective for this track.

Please make sure to check prerequisite courses while selecting future classes.

# ST. CATHERINE OF BOLOGNA

# FINE ARTS PATHWAY JOURNALISM



## FRESHMAN YEAR

Journalism I

## SOPHOMORE YEAR

Photography OR  
Mass Communications

## JUNIOR YEAR

Mass Communications,  
Yearbook, Journalism II, OR  
Photo Editors Hour

## SENIOR YEAR

Mass Communications,  
Yearbook, Journalism II, OR  
Photo Editors Hour

\*KMC freshman through junior students are required to be enrolled in eight total credits each year. KMC senior students may enroll in up to four Free Hours (no credit) if they meet all requirements to do so.

# ST. CATHERINE OF BOLOGNA FINE ARTS PATHWAY (Journalism Emphasis)

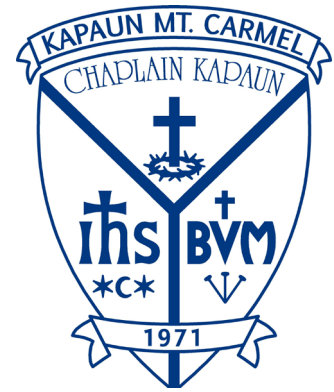
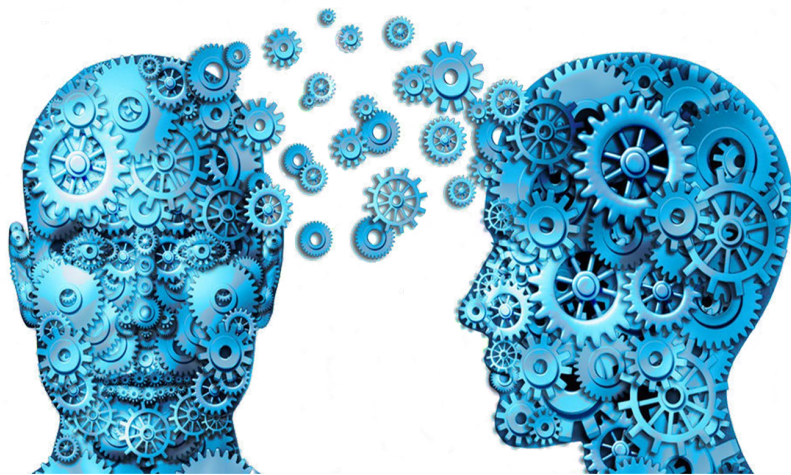
KMC & KBOR MINIMUM CREDITS		FRESHMAN YEAR	SOPHOMORE YEAR	JUNIOR YEAR	SENIOR YEAR
4	<b>English</b>	English I (Split Block: Must be concurrently enrolled in elective Learning Strategies.) English I Honors English I	English II Honors English II	English III Honors English III	English IV Honors English IV
4	<b>Religion</b>	Salvation History Christian Morality	Prayer & Spirituality Sacraments & Liturgy	Church History Faith & Reason	Catholic Social Teaching Christian Vocations
3	<b>Math</b>	Principles of Math (Split Block: Must be concurrently enrolled in Algebra I & Conceptual Physical Science) Algebra I Honors Algebra I Honors Geometry	Geometry Honors Geometry Honors Algebra II	Algebra II Honors Algebra II Trigonometry (.5) / Intro to Calculus (.5)	College Algebra Statistics AP Calculus I
3	<b>Science</b>	Conceptual Physical Science (Split Block: Must be concurrently enrolled in Principles of Math & Algebra I) Freshman Chemistry Freshman Physics Honors Freshman Chemistry H Freshman Physics	Biology Honors Biology	Chemistry Anatomy & Physiology Environmental Science Honors Chemistry	Anatomy & Physiology Environmental Science Chemistry Honors Physics
3.5	<b>Social Science</b>	World History Honors World History	US History I Honors US History I	US History II AP US History II	American Government Honors American Government
1	<b>Physical Education</b>	Boys PE Girls PE			
.5	<b>Communications</b>	Journalism 1♥	Photography ♥ Mass Communications♥	Mass Communications♥ Yearbook♥ Journalism II♥ Publications♥	Mass Communications♥ Yearbook♥ Journalism II♥ Photography♥
1	<b>Fine Arts</b>				
1	<b>Business</b>	Computer Applications	Career & Financial Plang		
1	<b>World Language</b>		Spanish I French I Latin I	Spanish II French II Latin II	Spanish III French III Latin III
	<b>Elective</b>			Elective	Elective

♥ Required elective for this track. Please note that a student's Fine Art requirement is completed through the required pathway electives. The total credits required for completion of this track are 3.5. A student would select only 1 credit from Sophomore through Junior year from the above choices.

Please make sure to check prerequisite courses while selecting future classes.

# SR. KATHLEEN GILBERT, BVM

## EDUCATION PATHWAY



### FRESHMAN YEAR

Communications

### SOPHOMORE YEAR

Fine Arts Elective  
Relationships

### JUNIOR YEAR

Parish Service  
Child Development

### SENIOR YEAR

Sr. Kathleen Gilbert, BVM  
Teaching Academy  
Psychology

\*KMC freshman through junior students are required to be enrolled in eight total credits each year. KMC senior students may enroll in up to four Free Hours (no credit) if they meet all requirements to do so.

# SR. KATHLEEN GILBERT, BVM TEACHER ACADEMY & PATHWAY

KMC & KBOR MINIMUM CREDITS		FRESHMAN YEAR	SOPHOMORE YEAR	JUNIOR YEAR	SENIOR YEAR
4	<b>English</b>	English I (Split Block: Must be concurrently enrolled in elective Learning Strategies.) English I 1 Honors English I 1	English II 1 Honors English II 1	English III 1 Honors English III 1	English IV 1 Honors English IV 1
4	<b>Religion</b>	Salvation History .5 Christian Morality .5	Prayer & Spirituality .5 Sacraments & Liturgy .5	Church History .5 Faith & Reason .5	Catholic Social Teaching .5 Christian Vocations .5
4	<b>Math</b>	Principles of Math (Split Block: Must be concurrently enrolled in Algebra I & Conceptual Physical Science) Algebra I 1 Honors Algebra I 1 Honors Geometry 1 Honors Algebra II 1	Geometry 1 Honors Geometry 1 Honors Algebra II 1 Trigonometry (.5)/ Intro to Calculus (.5) 1	Honors Algebra II ♠ 1 Trigonometry (.5) / Intro to Calculus (.5) 1 Calculus I 1	Trigonometry .5 Intro to Calculus ♥ .5 Statistics ♥ .5 AP Calculus I 1 AP Calculus II 1
3.5	<b>Science</b>	Conceptual Physical Science♦ (Split Block: Must be concurrently enrolled in Principles of Math & Algebra I) .5 Freshman Chemistry .5 Freshman Physics .5 Honors Freshman Chemistry .5 Honors Freshman Physics .5 Honors Biology* 1	Biology 1 Honors Biology 1 Honors Chemistry ♠ 1	Chemistry ♠ 1 Anatomy & Physiology 1 Environmental Science 1 Honors Chemistry ♠ 1 Honors Physics 1	Physics 1 Chemistry ♠ 1 Anatomy & Physiology 1 Environmental Science 1 Honors Chemistry ♠ 1 Honors Physics 1
3	<b>Social Science</b>	World History 1 Honors World History 1	US History I 1 Honors US History I 1	US History II 1 AP US History II 1	American Government .5 Honors American Government .5
1	<b>Physical Education</b>	Boys PE 1 Girls PE 1			
.5	<b>Communications</b>	Communications .5 Introduction to Debate .5 Forensics .5 Journalism I 1			
1	<b>Fine Arts</b>		Intro to Art .5 2D, 3D, or Ceramics ♥ .5 Theatre Introduction .5 Stagecrafts .5 Band 1 Music Appreciation .5 History of Rock-n-Roll .5	Journalism 1	
1	<b>Business</b>	Computer Applications .5	Career & Financial Plang 1		
1	<b>World Language</b>	Spanish I 1 French I 1 Latin I 1	Spanish II 1 French II 1 Latin II 1		
	<b>Teacher Preparation</b>			Tutoring 1 Parish Service W .5 Peer Mentoring .5	Learning Styles X .5 Field Experience X .5 Intro to Teaching X .5 Practicum II X .5
	<b>Elective</b>		Elective .5	Elective 3	Elective 1.5

♦ Counts as a graduation requirement, but it does not meet the KBOR requirements

♥ Check prerequisite courses.

♠ A student must test out of Freshman Chemistry and Freshman Physics in order to enroll in biology his/her freshman year.

♣ KBOR requirement for either the regular or honors course.

X Offered only during the Fall Semester (classes runs during the last two blocks of everyday)

W Parish Service is offered only in the spring semester and is a prerequisite for Education Field Experience.

# GRADE LEVEL ADVANCEMENT

A student is expected to make satisfactory progress towards graduation. In order to continue to be enrolled at Kapaun Mt. Carmel Catholic High School, a student should accumulate credits by the end of each academic year at the following minimum rate:

Freshman	6.0 credits
Sophomore	13.0 credits
Junior	21.0 credits

# POST-SECONDARY EDUCATION

The following information is offered for the student pursuing post-secondary education. For some colleges these are just recommendations; for others, they are requirements. It is the student's responsibility to ascertain school-specific admissions requirements for the colleges/universities where he/she is applying.

HIGHLY SELECTIVE COLLEGES/UNIVERSITIES		
COURSE	CREDITS	PREREQUISITE(S)
English	4 credits	Includes intensive composition work
Mathematics	4 credits	Through Calculus I
Science	4 credits	Including three lab sciences
Social Science	3.5 credits	
Fine Arts	1 credit	
World Language	3 or more credits	

OUT OF STATE COLLEGES/UNIVERSITIES		
COURSE	CREDITS	PREREQUISITE(S)
English	4 credits	
Mathematics	3.5 to 4 credits	Algebra I or Honors Algebra Geometry or Honors Geometry Algebra II or Honors Algebra II Trigonometry and Intro to Calculus
Science	3 to 4 credits	Biology or Honors Biology Chemistry or Honors Chemistry Physics or Honors Physics
Social Science	3.5 credits	
World Language	2 credits	Same Language



## NCAA

If you plan to attend a NCAA Division I or II member college or university as a student-athlete you must first file with the NCAA Eligibility Center. Please contact your counselor as soon as possible for the required documentation during the second semester of the junior year or the first semester of the senior year. For more information, log on to <https://web3.ncaa.org>.



CATHOLIC DIOCESE  
OF WICHITA

## **DIOCESAN Scholarship Opportunities**

Applications for scholarships and related materials are due by April 1. Applicants will be notified of a decision no later than May 1. All scholarships require a written application and some require a letter of recommendation(s). Any annual renewal of scholarships (where applicable) require the submission of transcripts within 30 days of the end of a semester. All materials should be mailed to the Office of Development and Planned Giving at the diocese. Application forms can be found on the Catholic Diocese of Wichita website at [catholicdioceseofwichita.org/development/scholarship-opportunities/](http://catholicdioceseofwichita.org/development/scholarship-opportunities/).

### **Gessler Scholarship**

The N.J. Gessler, Jr. Pharmacy Scholarship Fund was created to honor the memory of N.J. Gessler, a pioneer in the Wichita pharmacy market. Upon his passing, the family created this fund to provide support for a student graduating from a diocesan Catholic high school pursuing an education in pharmacy.

### **Iris Scholarship**

The Iris Scholarship Fund is an annual award of \$500 to one female graduate of a Wichita diocesan Catholic high school who will be attending or is currently attending a college or university in Kansas who played one or more sports while attending high school.

### **John and Kristen Clevenger Memorial Scholarship**

The John and Kristen Clevenger Memorial Scholarship was created originally to honor John Clevenger who died suddenly in July 2017. Nearly two years later in June 2019, his wife, Kristen, died. John and Kristen's family and friends have created a scholarship of \$2,500/year for up to four years to a college-bound student who attended Holy Savior Catholic Academy. The applicant will exemplify service to others, hard work, and dedication to those less fortunate than themselves.

### **Ray of Hope Scholarship**

The Ray of Hope Scholarship Fund provides an opportunity for a current senior in high school who might not be able to experience a post-secondary education/training without significant financial assistance. The scholarship will pay between \$3,000 to \$5,000 per semester depending on the college or trade school chosen. The award can be used for tuition, books and fees. After initial award is made, the scholarship can be renewed for up to seven continuous semesters, depending on the school chosen. As this scholarship follows one student for up to eight continuous semesters, it will not be available every year.

### **Sisters of Charity, BVM Endowed Scholarship**

For a graduating senior at Kapaun Mt. Carmel Catholic High School to assist with payment of tuition to continue his/her post-secondary education at a Catholic college or university. The maximum annual amount of the endowed scholarship will be the lesser of \$2,000 or 5% of the principal amount. The scholarship may be awarded to a single individual or divided among multiple recipients.

### **Sister Loretta Thome Scholarship**

The Sister Loretta Thome Scholarship was created to provide a \$1,000 grant per semester, up to 10 consecutive semesters, for a Catholic graduate of Bishop Carroll Catholic High School, Kapaun Mt. Carmel Catholic High School, or a Catholic parishioner graduating from Garden Plain or Andale high schools who will study math, accounting, science, computer science, library science, elementary or secondary education, nursing or pre-med while in college.

### **Visions of the Future Scholarship**

The Visions of the Future Catholic College Scholarship Fund is open to anyone in the Catholic Diocese of Wichita who will be attending a Catholic college or Catholic university.



# KANSAS BOARD OF REGENTS

## Kansas Scholars Curriculum & State Scholar Quick Facts

Completion of the Kansas Scholars Curriculum is one of the requirements Kansas residents must meet in order to receive State Scholar designation. This occurs during the senior year of high school.

### What are the other requirements to become a State Scholar?

- Students must have taken the ACT between April of the sophomore year and December of the senior year.
- Students must be a Kansas resident.
- Students must have their curriculum and 7th semester GPA certified on the official roster by the high school counselor, registrar, or similar official.

---

## KANSAS SCHOLARS CURRICULUM

### English - 4 years

One unit to be taken each year. Must include substantial recurrent practice in writing extensive and structured papers, extensive reading of significant literature, and significant experience in speaking and listening.

### Mathematics - 4 years

Algebra I, Algebra II, Geometry, and one unit of advanced mathematics-- suggested courses include: Analytic Geometry, Trigonometry, Advanced Algebra, Probability and Statistics, Functions or Calculus. Completion of Algebra I in 8th grade is acceptable; the student would then only need three years of math in high school.

### Science - 3 years

One year each in Biology, Chemistry, and Physics, each of which include an average of one laboratory period a week. Applied/technical courses may not substitute for a unit of natural science credit.

### Social Studies - 3 years

One unit of U.S. History; minimum of one-half unit of U.S. Government and minimum of one-half unit selected from: World History, World Geography or International Relations; and one unit selected from: Psychology, Economics, U.S. Government, U.S. History, Current Social Issues, Sociology, Anthropology, and Race and Ethnic Group Relations. Half unit courses may be combined to make this a whole unit.

### World Language - 2 years

Two years of one language. Latin and Sign Language are accepted.

---

### What is the benefit of completing the Kansas Scholars Curriculum?

Students that complete this curriculum and meet the other requirements, may be designated as State Scholars, which makes one eligible to receive the Kansas State Scholarship as provided by the Kansas Legislature.

The academic profile of recent scholars include an average ACT of 29 and an average GPA of 3.92. State Scholars may receive up to \$1,000 annually for up to four undergraduate years (five, if enrolled in a designated five-year program), based on financial need and the availability of State funds. Financial need is measured by federal methodology using data submitted on the FAFSA.

For more information, contact us at (785) 430-4300 or at [scholars@ksbor.org](mailto:scholars@ksbor.org).



# Qualified Admissions

High School Graduates Academic Year 2022-2023 and After

The six state universities in Kansas--Emporia State University, Fort Hays State University, Kansas State University, Pittsburg State University, The University of Kansas, and Wichita State University--use the standards below, set by the Kansas Board of Regents, to review applicants for undergraduate admission.

## ACCREDITED HIGH SCHOOL

Freshman applicants, under the age of 21, who graduate from an accredited high school, will be guaranteed admission to six state universities by meeting the Qualified Admissions requirements designated by each university, as follows:

### ESU, PSU, FHSU, & WSU:

- Cumulative High School GPA 2.25+ or ACT 21+ (SAT 1060)\*

### K-State:

- Cumulative High School GPA 3.25+ or ACT 21+ (SAT 1060)\*

### KU:


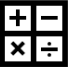



- Cumulative High School GPA 3.25+  
**OR** Cumulative GPA 2.0+ and ACT 21+ (SAT 1060)\*

### ALL Institutions Require:

- Cumulative GPA 2.0+ for College Credits earned in High School

**KANSAS SCHOLARS CURRICULUM IS RECOMMENDED BUT NOT REQUIRED:** To best prepare for the rigor of college-level courses, the Kansas Scholars curriculum is recommended.

One unit is equivalent to one year, or two semesters:

				
<b>English</b> 4 units	<b>Math</b> 4 units 1 unit of each: Algebra 1, Geometry, Algebra II 1 unit: Advanced Math See <a href="#">KS Scholars page</a> For Math course list	<b>Social Science</b> 3 units 1 unit U.S. History .5 unit U.S. Gov .5 unit World History 1 unit: Social Science course See <a href="#">KS Scholars Page</a> for Social Science course list	<b>Science</b> 3 units 1 unit of each: Biology, Chemistry, & Physics	<b>Foreign Language</b> 2 units of the same language

**KANSAS SCHOLARS Program:** More information about the Kansas Scholars Scholarship & Curriculum can be found [here](#) (pdf).

## HOMESCHOOL & UNACCREDITED HIGH SCHOOL

Freshman applicants, under the age of 21, who are homeschooled or graduate from an unaccredited high school will be guaranteed admission to the six state universities by achieving an ACT score equivalent to those outlined above, per each university. If you enroll in college courses while in high school, it is also required that you achieve a 2.0 GPA or higher in those courses.

*\*If you do not meet the qualified admission requirements, you are still encouraged to apply. Your application will be reviewed individually. Contact the university admissions office for more information.*

*This document provides a summary overview of admission requirements at state universities and is not a substitute for or to be used in lieu of the actual detailed admissions requirements, which can be found at: [www.kansasregents.org/qualified\\_admissions\\_rules\\_regulations](http://www.kansasregents.org/qualified_admissions_rules_regulations).*

# PRE-COLLEGE CURRICULUM FOR SCHOLARSHIP APPLICANTS

To be eligible for one of the three state sponsored scholarships – **State Scholarship Program, Minority Scholarship Program or Kansas Teachers Scholarship**, the following curriculum is required.

REGENT SCHOLARSHIPS CURRICULUM		
COURSE	CREDITS	PREREQUISITE(S)
English	4 credits	
Mathematics	4 credits	Algebra I or higher
Science	3 credits	Biology or Honors Biology Chemistry or Honors Chemistry Physics or Honors Physics
Social Science	3.5 credits	World History U.S. History I and II American Government
World Language	2 credits	Same World Language

## TESTING

By various tests, the counselors and the administrators attempt to discover achievement, interests, attitudes, abilities, aptitudes and objectives of the student. Many of the instruments are designed to give the student a better picture of his/her educational development. Test results assist the school in curriculum planning and assessment and help the student in present and future planning.

**PLACEMENT TEST** Each entering freshman will be required to take the Placement Test as part of the admission process. This test is not an entrance exam. Placement Test scores, middle school teacher recommendations and consultation with parents provide the counselors the information they need to determine class placement recommendations for the freshman year.

**FRESHMAN ADVANCED PLACEMENT TEST** These tests are given to students who wish to “test out” of a given subject and advance to the next level of studies within that curricular area.

**PSAT/NMSQT** This test measures Verbal, Mathematical, and Writing Abilities important in college work. It is useful in predicting performance on the SAT test, which some colleges require for admission. All juniors, as well as sophomores and freshmen enrolled in all Honors curriculum will take this test in October. Juniors are automatically placed in scholarship competition administered by the National Merit Scholarship Corporation.

**ACT/SAT** These tests measure academic ability and one or the other is required by all colleges/universities for admission purposes. The ACT tests in the areas of English, Mathematics, Science Reasoning, Reading and Writing. Kansas colleges and the majority of those located in the Midwest require it. The SAT test measures Verbal, Mathematics and Writing. Colleges located on the East and West coasts generally require this test. It is the student’s responsibility to determine which test is required for the college(s)/university(s) to which he/she is applying. If undecided, it is recommended that the student take each test one or more times. The Counseling Department recommends taking these tests beginning in the junior year. Registration information is available from the Counseling Department. It is the student’s responsibility to complete the test registration.

**SAT II** Up to three achievement tests are generally required by highly selective colleges to assist in appropriate class placement. It is the student’s responsibility to determine which, if any, achievement test(s) are required for admission purposes. The tests are generally taken after completion of the highest level course offered at Kapaun Mt. Carmel in the particular area(s), or in December of the student’s senior year. Registration information is available from the Counseling Department and are the same ones used to register for the SAT. The most commonly taken tests are History, Math Level I, and a World Language.

**ADVANCED PLACEMENT EXAMINATION** The College Board, the company that produces the PSAT and SAT exams, also authors Advanced Placement exams. These tests grant college placement and/or credit to students with qualifying scores. The Counselors administer the exams to interested Kapaun Mt. Carmel students, in May. Students must sign up in the Counseling Department in the spring so that the tests may be ordered. A score of 3, 4, or 5 may earn college credit depending upon the individual requirements of each college. A separate testing fee is required for the AP exams.

## CONCURRENT CREDIT VS. AP CREDIT

Two approaches to earning college credit during high school:

	CONCURRENT CREDIT	AP CREDIT
Description	Dual enrollment with a university earning credit for both institutions	Passing exam to prove mastery of college-level curriculum
Cost	Discounted rate per credit hour of institution, usually around \$250 per class	\$88 per exam as of 2022-23 school year
Transfer Credit	Credits/grades earned per university guidelines	Usually a score of 3, 4 or 5 is transferable per university guidelines

### CUM LAUDE CURRICULUM

The Kapaun Mt. Carmel Cum Laude curriculum is designed for students who score in the 90th percentile or above on the Placement Test and who wish to pursue a rigorous academic program culminating in the reception of a Kapaun Mt. Carmel Catholic High School Honors Diploma.

**Students in the Cum Laude curriculum have the option of two tracks, one of which is more heavily weighted to Math and the other which is more heavily weighted to Science. These tracks offer honors classes in English, Mathematics, Science, Social Science and World Languages. Cum Laude students who enroll in the curriculum will remain in the classes the entire year, and must have a final grade, each semester, of an A or B in order to continue in the program. Twenty-eight credits are required for graduation. One Fine Arts course may replace an Honors course each year. However, students need to check with their counselor to be sure that they meet all the prerequisites for future Cum Laude courses.**

Students who complete the Cum Laude curriculum have the opportunity to earn 20 to 30 hours of college credit, or more, before high school graduation. College credit is earned by enrolling in the concurrent college class or through the Advanced Placement tests offered at KMC. Additional college credit may be earned by the combination of concurrent enrollment and AP testing.

# CUM LAUDE CURRICULUM I

**This curriculum has 20-22 credits. The remaining credits will be elective courses.  
(Suggested Track)**

MINIMUM CREDITS	SUBJECT	FRESHMAN YEAR	SOPHOMORE YEAR	JUNIOR YEAR	SENIOR YEAR
4	Religion	(.5) Salvation Hist. (.5) Christian Morality	(.5) New Testament (.5) Prayer, Liturgy & Sacraments	(.5) Church History (.5) Faith & Reason	(.5) Christian Vocation (.5) Catholic Social Teaching
4	English	H English I	H English II	H English III	AP English IV
4	Mathematics	H Algebra I	H Geometry	H Algebra II or (.5) Trigonometry	(.5) Trigonometry (.5) Intro to Calculus or AP Calculus I
4	Science	H Freshman Physics/H. Freshman Chemistry	H Biology	H Chemistry or H Anatomy/ Physiology or H Physics	H Physics or AP Chemistry II or H Physics or AP Physics C
3.5	Social Science	H World History	H US History I	AP US History II	(.5) H American Government
1	Fine Arts	See Fine Arts for listings	See Fine Arts for listings	See Fine Arts for listings	See Fine Arts for listings
1	Physical Education	P.E. I			
Required	Communication Arts	(.5) Communications			
Required	Business	(.5) Computer Applications	(.5) Financial Planning		
3 Years Required	World Languages	H Spanish I or H French I or H Latin I	H Spanish II or H French II or H Latin II	H Spanish III or H French III or H Latin III	H Spanish IV or H French IV
TOTAL CREDITS		3.0 to 5.0 Honor Credits	4.5 Honor Credits	5.0 to 6.0 Honor Credits	4.5 Honor Credits

# CUM LAUDE CURRICULUM II

**This curriculum has 20-22 credits. The remaining credits will be elective courses.**

***(Suggested Track)***

MINIMUM CREDITS	SUBJECT	FRESHMAN YEAR	SOPHOMORE YEAR	JUNIOR YEAR	SENIOR YEAR
4	Religion	(.5) Salvation Hist. (.5) Christian Morality	(.5) New Testament (.5) Prayer, Liturgy & Sacraments	(.5) Church History (.5) Faith & Reason	(.5) Christian Vocation (.5) Catholic Social Teaching
4	English	H English I	H English II	H English III	AP English IV
4	Mathematics	H Geometry	H Algebra II (.5) Trigonometry	(.5) Trigonometry (.5) Intro to Calculus or AP Calculus	AP Calculus I or AP Calculus II
4	Science	Biology or H Biology	H Chemistry or H Anatomy/ Physiology	H Chemistry or AP Chemistry II or H Physics or H Anatomy/ Physiology	AP Chemistry II or AP Physics C or H Physics or H Anatomy/ Physiology
3.5	Social Science	H World History	H US History I	AP US History II	(.5) H American Government
1	Fine Arts	See Fine Arts for listings	See Fine Arts for listings	See Fine Arts for listings	See Fine Arts for listings
1	Physical Education	P.E. I			
Required	Business	(.5) Computer Applications (.5) Communications	(.5) Financial Planning		
3 Years Required	World Languages	H Spanish I or H French I or H Latin I	H Spanish II or H French II or H Latin II	H Spanish III or H French III or H Latin III	H Spanish IV or H French IV
TOTAL CREDITS		3.0 to 5.0 Honor Credits	4.5 Honor Credits	5.0 to 6.0 Honor Credits	4.5 Honor Credits

# CONCURRENT COLLEGE CREDIT

**Requires payment of tuition to institution indicated.  
Requires an overall 3.0 GPA to receive college credit.**

COURSE TITLE	INSTITUTION/CREDIT	CONCURRENT COURSE	CONCURRENT COURSE NO.
AP Calculus I	Newman University / 5 semester hours	Calculus I	M2015
AP Calculus II	Newman University / 5 semester hours	Calculus II	M2025
AP English IV	Newman University / 3 semester hours <i>Potential for 9 semester hours with appropriate AP score.</i>	Intro to Literature & Criticism	2003
AP French IV	Friends University / 8 semester hours	Beginning French	101-Lab and 201 102-Lab and 202
AP Physics	Newman University / 5 semester hours	Physics I w/ Lab	2013/2011
AP Spanish IV	Newman University / 4 semester hours	Intermediate Spanish I	2014
AP Spanish V	Newman University / 4 semester hours	Intermediate Spanish II	2024
AP U.S. History II	Newman University / 3 semester hours	American History I	1033
Accounting I	Newman University / 3 semester hours	Financial Accounting	Acct 2883
CATIA	Wichita State University / 3 semester hours	CATIA	
PLTW	Wichita State University / 3 semester hours	Intro to Engineering Design Principles of Engineering Engineering Design & Development	
Honors American Government	Newman University / 3 semester hours	Political Science: American Government	PSN1003
College Algebra	Newman University / 3 semester hours	College Algebra	1043
College Speech	Newman University / 3 semester hours	Oral Communication	
Music Appreciation	Friends University / 3 semester hours	Aesthetic Experience Through Music	20725
Philosophy	Newman University / 3 semester hours	Philosophy	
Statistics	Newman University / 3 semester hours	Probabilities & Statistics I	2033
Teaching Academy	Newman University / 2 semester hours	Field Experience I	2002

# COMMUNICATION ARTS

Course Title	Grade Level	Required	Elective	Credit	Prerequisite(s)
<b>Introduction to Debate*</b> KMC619 First Semester Only	9, 10, 11,12		X	.5	<ul style="list-style-type: none"> <li>Teacher/administrator approval</li> </ul>
<b>Advanced Debate</b> KMC620 First Semester Only	10, 11,12		X	.5	<ul style="list-style-type: none"> <li>Introduction to Debate</li> </ul>
<b>Communications</b> KMC621	9, 10, 11,12		X	.5	
<b>College Speech</b> KMC514	11,12		X	.5	<ul style="list-style-type: none"> <li>Communications</li> <li>3.0 GPA</li> </ul>
<b>Forensics*</b> KMC618 Second Semester Only	9, 10, 11,12		X	.5	
<b>Journalism I</b> KMC225	9, 10, 11,12		X	.5	<ul style="list-style-type: none"> <li>"B" or better grade in English II, III, IV</li> <li>Freshman must have concurrent enrollment in Honors English I for fall semester; spring semester requires "B" or better in English I</li> </ul>
<b>Mass Communications</b> KMC982/KMC1982	9, 10, 11,12		X	.5	<ul style="list-style-type: none"> <li>Repeatable course</li> </ul>
<b>Journalism II* (Paladin)</b> KMC1226	10, 11,12		X	.5	<ul style="list-style-type: none"> <li>"C" or better grade in Journalism I each semester</li> <li>Repeatable course</li> <li>Attendance at summer workshop</li> </ul>
<b>Journalism Editors *</b> KMC1223	10, 11,12		X	.5	<ul style="list-style-type: none"> <li>"C" or better grade in Journalism I</li> <li>Repeatable course</li> </ul>
<b>Yearbook*</b> KMC1980	10, 11,12		X	1	<ul style="list-style-type: none"> <li>"C" or better grade in Journalism I</li> <li>Repeatable course</li> <li>Attendance at summer workshop</li> </ul>
<b>Publications Photography</b> KMC1981	11,12		X	.5	<ul style="list-style-type: none"> <li>Repeatable course</li> <li>"C" or better grade in Photography I</li> <li>Staff photographer for Yearbook or Journalism II</li> </ul>

\* These courses may be used toward Fine Arts credit or Communications credit, but not both.

## COURSE DESCRIPTIONS: COMMUNICATIONS

### INTRODUCTION TO DEBATE (KMC619)

This first semester-only course is designed as an introduction to argumentation, research, speaking, and other skills developed through participation in debate. The course focuses on not only instruction in the basic skill development needed to compete in debate but also on developing knowledge of a selected debate topic or resolution. Competitive participation in interscholastic debate tournaments is considered an integral and essential portion of the course. Tournaments traditionally take place on Saturday although a few tournaments for beginning debaters take place over both Fridays and Saturdays. The major emphasis of the course is placed on the preparation of cases and various types of arguments used in competitive debate, development of advanced research skills, improving communication skills, teamwork, and the development of higher-level analytical skills. Tournament participation, completion of various written assignments, participation in practice debates, and objective tests determine grades. Competitive participation in a minimum of three (3) tournaments is required. Fullfills communications or fine arts graduation requirement.

### ADVANCED DEBATE (KMC620)

This first semester-only course is designed as a course to continue development of the basic skills emphasized in the introductory course. The primary focus of the course is the development of work habits and skills necessary to compete in debate on an advanced level. Competitive participation in interscholastic debate tournaments is considered an integral and essential portion of the course. Tournaments traditionally take place over portions of two days, Friday afternoons/evenings and Saturdays. Students enrolled in this course are expected to make competing in debate tournaments a high priority. Coursework will focus on the preparation of cases and various types of arguments used in competitive debate, honing of advanced research skills, audience recognition and adaptation in debate, teamwork, and the development of higher level analytical skills. Tournament participation, completion of various written assignments, participation in practice debates, and objective tests determine grades. Competitive participation in a minimum of five (5) tournaments is required. Fullfills communications or fine arts graduation requirement.

#### **COMMUNICATIONS OR ALTERNATE COURSE:**

One-half credit of Communications is required for graduation from Kapaun Mt. Carmel Catholic High School. To meet this requirement, students usually take the Communications Class. The following courses will also fulfill the Communications requirement: **Introduction to Debate, Forensics, Mass Communications, Journalism I or II, or Yearbook.** Please consult a KMC Counselor if the student has questions.

### COMMUNICATIONS (KMC621)

This semester course assists the student in development of knowledge-based communication theory. Students will apply principles of communication theory in personal, professional, and public contexts. Students will improve their communication by examining themselves as communicators, realizing how their own communication may be perceived by others, learning how to relate to colleagues, friends and audiences through guided activities in self-evaluation, group dynamics, conflict resolution and public address. Students will demonstrate their knowledge through quizzes, role-play, group presentations, examinations, and speeches. Students will also use appropriate technologies to retrieve information and to present information to mass audiences. This semester class is a KMC graduation requirement. (Intro to Debate, Forensics, Yearbook, Business Marketing, and some Journalism classes can be taken in lieu of this requirement). Fullfills communications or fine arts graduation requirement.

### COLLEGE SPEECH (2042HUTCH)

This course provides instruction and experience in the preparation and delivery of speeches within a public setting and group discussion. Emphasis is on research, preparation, delivery, and evaluation of informative, persuasive, and special occasion public speaking. Upon completion, students should be able to prepare and deliver well-organized speeches and participate in a group discussion with appropriate audiovisual support. Students should also demonstrate the speaking, listening, and interpersonal skills necessary to be effective communicators in academic settings, in the workplace, and in the community.

### FORENSICS (KMC618)

This second semester-only course is designed as an introduction to the art of forensics. Forensics class incorporates public speaking, interpretation of literature and debate into competitive forensics competition. Students in this class will work on development of methods of overcoming speech anxiety, learn valuable communication tools and training for college and their professional careers, improve study habits and research, develop time allocation skills, and advance critical thinking and reasoning skills in an attempt to make them more well-rounded in all of their endeavors. Students in this class will also gain practical knowledge to compete as part of a team in competitive scholastic forensics competitions. They will have numerous opportunities to perform in events including Original Oration, Informative Speaking, Extemporaneous Speaking, Impromptu Speaking, Poetry Interpretation, Prose Interpretation, Humorous Interpretation, Dramatic Interpretation and Duo Interpretation. Competition is considered an integral and essential part of the activity. Tournaments traditionally take place on Saturdays, although there are opportunities on Friday evenings and a few weeknights. Tournament participation, completion of various written assignments, and practice participations will determine grades. Competitive participation in three (3) tournaments is required. Fullfills communications or fine arts graduation requirement.

### JOURNALISM I (KMC225)

Journalism I is a semester-long course designed as an introduction to various aspects of modern newspaper and yearbook journalism. Within the content, students will learn about beginning photography, legal and ethical issues, newswriting and storytelling, copy editing, and page design. This course will also explore video storytelling and video editing. Students selecting this course should have at least a "B" in their English classes and have basic computer

skills. Freshmen enrolled in first semester should have concurrent enrollment in Honors English I; for a second semester enrollment, Honors English I is not necessary. A semester grade of "C" or better is a prerequisite to continue on to the publication staffs of Journalism II (*Paladin* newsmagazine, video, website) or Yearbook. Journalism I is a communications or fine arts credit.

#### MASS COMMUNICATIONS (KMC982 or KMC1982)

Mass Communications is a course designed for students with interests in journalism, other than traditional newspaper or yearbook print journalism. Those wanting to enroll in a course for traditional journalism should enroll in Journalism I (see above). Throughout the year, students will use school equipment and software to create video projects, which will be published on kmccrusade.com, the KMC Journalism website. Additionally, students will study legal and ethical guidelines, basic interviewing skills, basic video composition principles, and how to put together a video story. The class structure allows for independent, hands-on learning opportunities and projects with professional guidance.

#### JOURNALISM II (KMC1226)

Journalism II is a student-led course that produces videos, the *Paladin* newsmagazine and the kmccrusade.com student media website. In this course, students will concentrate on storytelling in whichever format deemed necessary for that story, whether it be a newsmagazine article, website article, photography package or video. Students will have creative license in each of the areas, but will be required to perform all skills of the modern journalist. Students will use Adobe InDesign, Adobe Photoshop and Premiere Pro. Students are expected to write articles, design pages, sell advertising, shoot photos, and create videos. During *Paladin* deadline weeks, students are expected to work on work days (approximately six per year). Students are required to attend a summer workshop prior to the school year. Students must have passed Journalism I with a "C" or better, must have instructor permission, and must apply for available positions in the class. This is a year-long commitment that cannot be dropped at semester. Dismissal from staff will only be at the advisor's request. To maintain enrollment and/or to repeat the course, students must achieve a minimum grade of a "C" or better per semester and have instructor permission. Journalism II is a communication or fine arts credit, and is repeatable. Seniors in AP English IV are also eligible without having taken Journalism I.

#### JOURNALISM EDITORS (KMC1223)

Journalism Editors is an optional semester or year-long course offered for the editors of the kmccrusade.com, *Paladin* newsmagazine or *Crusader* yearbook. Students selected for leadership positions may enroll in Journalism Editors as an independent work hour. In the class, staff members plan, edit and execute design and composition of the website, *Paladin* newsmagazine or *Crusader* yearbook, filling roles as editors, section editors, managers, etc. To maintain enrollment and/or to repeat the course, students must be concurrently enrolled in Journalism II or Yearbook and have instructor permission. Journalism Editors is a communications or fine arts credit, and is repeatable.

#### YEARBOOK (KMC1980)

Yearbook is a student-led course offered for the production of the yearbook. Students will utilize editing, writing and designing skills through practical application in producing the yearbook. Additionally, students are expected to write articles, complete yearbook pages, and assist with the production of the yearbook until completion, which falls after the end of the school year (early June). During deadlines, students are expected to work on work days (approximately five per year). Additionally, staffers are required to attend a summer workshop, where the upcoming year's book is preliminarily designed and planned. Students considering enrollment must have passed Journalism I with a "C" or better, must have instructor permission, and must apply for available staff positions. This is a year-long commitment that cannot be dropped at semester. Dismissal from staff will only be at the advisor's request. To maintain enrollment and/or to repeat the course, students must achieve a minimum grade of a "C" or better per semester and have instructor permission. Yearbook is a communications or fine arts credit, and is repeatable.

#### PUBLICATIONS PHOTOGRAPHY (KMC1981)

Publications Photography is a semester or year-long course designed for experienced photographers who will be able to advance their skill in digital photography and design. Students enrolled will be placed in either *Paladin* newsmagazine or *Crusader* yearbook classes to assist with photography needs of the publications. Students should expect to attend occasional work days for their respective publications. Digital cameras may be checked out with a signed permission form or may be provided by the student. To maintain enrollment in the class and/or to repeat the course, students must have a "C" or better grade each semester and instructor permission. Publications Photography is a communications or fine arts credit, and is repeatable.

# ENGLISH

Course Title	Grade Level	Required	Elective	Credit	Prerequisite(s)
<b>English I</b> KMC1203	9	X		1	<ul style="list-style-type: none"> <li>• Placement Test results</li> <li>• Split Class with Learning Strategies (KMC 1233)</li> </ul>
<b>English I</b> KMC1201	9	X		1	<ul style="list-style-type: none"> <li>• Placement Test results</li> </ul>
<b>Honors English I</b> KMC1202	9	X		1	<ul style="list-style-type: none"> <li>• Placement Test results</li> </ul>
<b>English II</b> KMC1204	10	X		1	<ul style="list-style-type: none"> <li>• English I</li> </ul>
<b>Honors English II</b> KMC1211	10	X		1	<ul style="list-style-type: none"> <li>• "B" or better grade in Honors English I</li> </ul>
<b>English III</b> KMC1206	11	X		1	<ul style="list-style-type: none"> <li>• English II</li> </ul>
<b>Honors English III</b> KMC1212	11	X		1	<ul style="list-style-type: none"> <li>• "B" or better grade in Honors English II</li> </ul>
<b>English IV</b> KMC1208	12	X		1	<ul style="list-style-type: none"> <li>• English III</li> </ul>
<b>AP English IV</b> KMC1213	12	X		1	<ul style="list-style-type: none"> <li>• "B" or better grade in Honors English III</li> <li>• Concurrent enrollment with Newman University (requires 3.0 GPA)</li> </ul>
<b>Learning Strategies</b> KMC1232	9		X	1	<ul style="list-style-type: none"> <li>• Placement Test results</li> </ul>
<b>Learning Strategies Split Block</b> KMC1233					
<b>Learning Strategies</b> KMC1234	10,11,12		X	.5	<ul style="list-style-type: none"> <li>• Teacher recommendation</li> </ul>

## COURSE DESCRIPTIONS: ENGLISH

### ENGLISH I (KMC1203; split-block with Learning Strategies 1233)

This Prep for Success (PFS) course for freshmen is designed to have scaffolded reading, writing, speaking and listening, and language assignments as well as weekly spelling and vocabulary study. These assignments are derived from the Holt literature series or other sources. The range of reading materials will focus on skill sets required for genres: fiction, non-fiction, poetry, and drama. Students will review literary concepts and basic essay writing. Concurrent enrollment in Learning Strategies. This course will prepare students to move to English II.

### ENGLISH I (KMC1201)

This course provides the student with the opportunity to develop and use skills in grammar, literature, and composition. This course reviews previous grammar skills, and the student will acquire new ones for use in composition. In literature the focus is on understanding various genres from short stories to selected novels to Shakespeare's Romeo and Juliet, and responding to them in a variety of ways. Composition concentrates on sentence structure and paragraph development, with some essays focusing on descriptive, narrative, expository, and persuasive writing. There is a brief unit on poetry and originally composed verse.



### HONORS ENGLISH I (KMC1202)

This course includes reading of classics in both American and British literature. A poetry unit and mini-unit in critical thinking and persuasion are included. In the area of writing, emphasis is placed upon response to the readings in essay answers. All writing is done in conjunction with a basic review of grammar skills. The same areas of writing as English I are covered. Students will develop an understanding of various genres of literature. There is a heavy emphasis on challenging classical readings and students are expected to accept responsibility for more difficult and independent work. Honors placement is based on the Placement Test but also assumes that the student is willing to expend above-average efforts in the course.

### ENGLISH II (KMC1204)

This survey course offers a broad range of reading in world literature periods and genres. Students will focus on character development and analysis while reinforcing their grammar and syntax knowledge. The course will also build on students' foundation of literary terms and writing skills. Furthermore, students will have the opportunity to write about character analysis and a research topic.

### HONORS ENGLISH II (KMC1211)

This course offers students an in-depth study of major authors' works and themes of world literature from a historical and social perspective. This course concentrates on developing skills of literary analysis in reading and writing, with special attention to further development of the five-paragraph essay.

### ENGLISH III (KMC1206)

This course offers an intensive study of American literature and various forms of composition. It concentrates on exposing the student to the basic genres of American literature: the short story, novel, poetry, and drama. In addition, the students will be required to enhance writing skills by producing the following types of compositions: five-paragraph essay, expanded essay, the essay test question, and research paper.

### HONORS ENGLISH III (KMC1212)

This course offers advanced junior students a study of American Literature within a historical framework. In addition, the students will concentrate on writing a personal statement as well as preparing for college applications. The writing program emphasizes analysis of literary subjects and includes a research paper.

### ENGLISH IV (KMC1208)

This course offers students an in-depth study of major authors, works, and themes of British Literature from a historical and social perspective. This course concentrates on developing writing and vocabulary skills to prepare the student for proficiency in ensuing college courses. Students will be required to write formally and informally in all modes of writing.

### AP ENGLISH IV (KMC1213)

Advanced placement study in British Literature and composition offers students an in-depth examination of major authors, works, and themes of British Literature from a historical and social perspective. This course concentrates on developing critical thinking through analysis of various literary works. The student's thinking must be expressed in class discussion and essays. Taking the AP exam in May could be highly beneficial for the prepared student. College credit is available through Newman University (Course No. 2003).



### LEARNING STRATEGIES (KMC1232)

This class offers freshmen the opportunity to improve in three broad areas: organization, study skills and goal-setting. Students need guidance in managing their time in a new school setting, functioning with a new schedule, and relying on their agenda. Study skills such as reading comprehension, test preparation, and note-taking are a few focuses at the basis of the instruction. Students learn to apply these study skills as they work to reach their own academic goals.

### LEARNING STRATEGIES SPLIT BLOCK (KMC1233)

This course meets for 45 minutes every day along with English I (KMC 1203) to allow students more frequent but shorter class times. This Learning Strategies class is designed for freshmen who meet three criteria: the student has significant ILP accommodations, has been recommended to take the class by his/her middle school, and has an incoming placement test score below the 20th percentile. This class offers freshmen the opportunity to improve in three broad areas: organization, study skills, and goal-setting. Students need guidance in managing their time in a new school setting, functioning with a new schedule, and relying on their agenda. Study skills such as reading comprehension, test preparation, and note-taking are a few focuses at the basis of the instruction. Students learn to apply these study skills as they work to reach their own academic goals.



### LEARNING STRATEGIES (KMC1234)

This semester course is designed to complement Learning Strategies (KMC1232), reviewing and applying skills learned in the first class. Learning Strategies (KMC 1232) is a prerequisite for this class as this second class is geared towards 10, 11, and 12 grade students.

## FINE ARTS - ART

Course Title	Grade Level	Required	Elective	Credit	Prerequisite(s)
<b>Intro to Art</b> KMC601	9, 10, 11, 12		X	.5	
<b>2D Art Techniques</b> KMC606 (S1) KMC606B(S2)	10, 11, 12		X	.5	• "C" or better grade in Intro to Art
<b>3D Art Techniques</b> KMC608 (S1) KMC608B(S2)	10, 11, 12		X	.5	• "C" or better grade in Intro to Art
<b>Ceramics</b> KMC604 (S1) KMC604B(S2)	10, 11, 12		X	.5	• "C" or better grade in Intro to Art
<b>Photography I</b> KMC1989	10, 11,12		X	1	• Complete application process
<b>Studio Art</b> KMC1612	11, 12		X	1	• "B" or better grade 2D Art Techniques

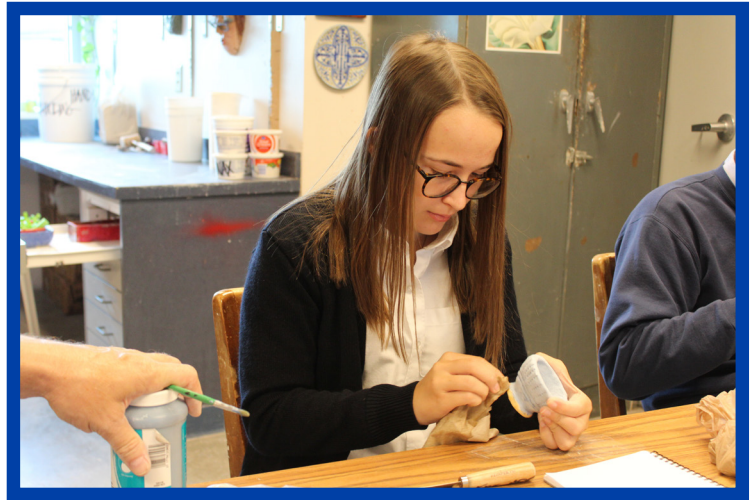
# COURSE DESCRIPTIONS: ART

## INTRODUCTION TO ART (KMC601)

This semester course covers 2-dimensional and 3-dimensional techniques in drawing, painting and sculpture. This course is the prerequisite for all other classes in the Art Department.

## 2D ART TECHNIQUES (KMC606 or KMC606B)

This semester course teaches drawing and painting techniques using pencil, ink, charcoal, pastel, crayon, watercolor, acrylic and oil painting. Various surfaces will be included: canvas, Masonite board, watercolor and drawing papers and charcoal and pastel papers. Styles such as Realism, Abstraction, Non-Objective, Architectural drawing and Pointillism will be studied. This course may be taken more than once with department approval. Prerequisite is a "C" or better grade in Intro to Art.



## 3D ART TECHNIQUES (KMC608 or KMC608B)

This semester class teaches various sculpture techniques using clay, paper, card/foam board, metal, etc. Clay construction methods will be covered. Methods of clay construction may include slab, pinch, coil, additive and subtractive techniques. Metal techniques will also be introduced. This course may be taken more than once with department approval. Prerequisite is a "B" or better grade in Intro to Art and teacher approval is required.

## CERAMICS (KMC604 or KMC604B)

This semester course teaches the fundamentals and history of ceramic construction using a single clay body. Techniques include: pinch, coil, hard slab, wheel throwing, underglazing as well as low and high fire glazing. Functional and non-functional, sculptural and non-objective work based on the historical uses and origins of clay for the past 30,000 years will be used. This course may be repeated with department approval. Prerequisite is "C" or better grade in Intro to Art.



## PHOTOGRAPHY I (KMC1989)

Photography I is a year-long course designed for beginning photographers. Within the course, students will learn photography history, camera functions, photography techniques, imaging software, and other beginning skills. Additionally, students will experiment with artistic and portrait photography. Students are also assigned to shoot events for KMC publications. Digital cameras may be checked out with a signed permission form or may be provided by the student. A year-long grade of "C" or better is required to continue as a staff photographer in *Paladin* newsmagazine or yearbook in the Publications Photography class. Photography is a fine arts credit only.



## STUDIO ART (KMC1612)

This year-long class is designed for students who plan to major in Art in college. To be admitted, the student must have a "B" or better grade in 2D Art Techniques. This course may be repeated junior and senior year.

# FINE ARTS - DRAFTING

Course Title	Grade Level	Required	Elective	Credit	Prerequisite(s)
<b>Drafting I</b> KMC1641	9, 10, 11, 12		X	1	
<b>Drafting II</b> KMC1642	10, 11, 12		X	1	• Drafting I
<b>Drafting III</b> KMC1643	11, 12		X	1	• Drafting II

## COURSE DESCRIPTIONS: DRAFTING

### DRAFTING I (KMC1641)

Drafting I will introduce the student to basic drafting skills, technology and introductory applications of graphic communication. The development of visualization skills, the use of manual drawings and software programs used in computer-aided drafting (CAD) will be stressed. High quality work, neatness and accuracy, cooperative learning strategies, and problem solving approaches to design problems will be an integral part of this course. The course will incorporate and strengthen Math, Science and Language Arts concepts and includes outcomes centered on design, technical skills, and specialized applications. Students interested in careers in Architecture, Engineering or technical fields are encouraged to take this introductory course.



### DRAFTING II (KMC1642)

This second year drafting course will further refine the skills introduced in Drafting I to produce residential architectural working drawings. Students will produce complete construction documents and learn how those documents relate to residential construction. Continued development of CAD skills will be stressed. High quality work, cooperative learning strategies, and problem solving approaches to design problems will be an integral part of this course. The course will continue to incorporate and strengthen Math, Science and Language Arts concepts and includes outcomes centered on design, technical skills and specialized applications.

### DRAFTING III (KMC1643)

This third year drafting course will further refine the skills introduced in Drafting I and II to produce college-level projects. The projects included in this course are an architectural scale model of the house they produced in Drafting II, and a special design project, building off of their design applications in Drafting II and relating to commercial design. High quality work, cooperative learning strategies and problem solving approaches to design problems will be an integral part of this course. The course will continue to incorporate and strengthen Math, Science and Language Arts concepts and includes outcomes centered on design, technical skills and specialized applications.

# FINE ARTS - DRAMA

Course Title	Grade Level	Required	Elective	Credit	Prerequisite(s)
<b>Introduction to Theatre</b> KMC627	9, 10, 11, 12		X	.5	
<b>Acting I</b> KMC628	9, 10, 11, 12		X	.5	• Introduction to Theatre
<b>Acting II</b> KMC629	10, 11, 12		X	.5	• Introduction to Theatre • Acting I
<b>Stagecrafts</b> KMC630(S1) KMC633(S2)	10, 11, 12		X	.5	• Introduction to Theatre • Repeatable course

## COURSE DESCRIPTIONS: DRAMA

### INTRODUCTION TO THEATRE (KMC627)

Introduction to Theatre provides an overview of theatre and its many facets, including the art of comedy and tragedy, plays versus musicals, a survey of the history of theatre, and learning the ins and outs of what goes on backstage both creatively and technically. Students are involved with hands-on work dealing with learning how the theatre works and will attend at least two theatrical productions during the semester.

### ACTING I (KMC628)

Acting I is an introduction to the craft of acting. Acting skills are explored and developed through both structured and improvised classroom activities. Text analysis is taught and applied to monologues

and scenes selected from both classic and contemporary literature. Audition techniques are practiced so that each student leaves the course with a monologue they are able to confidently perform for audition purposes. Students will also get field experience touring the drama departments of Wichita State University and Newman University. Students will critically review two theatre productions during the semester. Prerequisite is Introduction to Theatre.

### ACTING II (KMC629)

Skills acquired in Acting I are further developed in Acting II. Students will do more scene-work that requires deeper emotions and analysis skills. Further study of Shakespeare will help students gain comfort working with classical texts. Students will also get field experience touring the drama departments of Wichita State University and Newman University, as well as having guest speakers. Students will critically review two theatre productions during the semester. Prerequisite is Introduction to Theatre and Acting I.

### STAGECRAFTS (KMC630/KMC633)

This "hands-on" semester course provides an overview of the most common practices, materials, and tools involved in the creation of scenery, sets, and prop construction for theatrical productions. Students will be working with tools to build, paint, and create sets for the shows put on by KMC Theatre. Students work hard creatively and will be using critical thinking and decision-making skills. Students will also be required to attend to theatre productions during the semester. Prerequisite is Introduction to Theatre.



# FINE ARTS - MUSIC

Course Title	Grade Level	Required	Elective	Credit	Prerequisite(s)
<b>Band</b> KMC1625	9, 10, 11, 12		X	1	
<b>Concert Choir</b> KMC1607	9, 10, 11, 12		X	1	
<b>Madrigal Singers</b> KMC1610	11, 12		X	1	• Audition
<b>Women's Ensemble</b> KMC1609	10, 11, 12		X	1	• Audition
<b>Music Appreciation</b> KMC615	11, 12		X	.5	• Concurrent enrollment with Friends University
<b>History of Rock &amp; Roll I</b> KMC616	10, 11, 12		X	.5	
<b>History of Rock &amp; Roll II</b> KMC617	10, 11, 12		X	.5	• History of Rock & Roll I

## COURSE DESCRIPTIONS: MUSIC



### BAND (KMC1625)

Students will experience performing within a mixed instrumental ensemble while developing further knowledge of their particular instrument and playing skills. Members of this ensemble will perform at least three concerts a year, with the additional requirement of performing at home football and basketball games.

### CONCERT CHOIR (KMC1607)

This course stresses vocal technique and choral blend within a mixed (male and female) ensemble. Members will sing in at least four choral concerts a year. Grades are determined by class participation, assignments, and objective tests. Contest in April during the school day is required.

### MADRIGAL SINGERS (KMC1610)

The Madrigal Singers are a select mixed choral ensemble. This course stresses advanced choral techniques and challenging choral literature while students prepare for performances at Kapaun Mt. Carmel Catholic High School, regional and state festivals, and area social events. Members of this ensemble will serve as representatives of Kapaun Mt. Carmel Catholic High School at many school and community functions. **Students will be required to audition for this course.** Students will need to purchase the appropriate formal wear (dresses for the ladies and tuxedos for the gentlemen). Details will be given in class.

### WOMEN'S ENSEMBLE (KMC1609)

This course will allow students to experience performing, within a select women's ensemble, a variety of challenging choral literature striving for superior performance. Members of this class will perform in four concerts at Kapaun Mt. Carmel and at area social events throughout the year, serving as representatives of Kapaun Mt. Carmel Catholic High School. **Students will be required to audition for this course.** Students will need to purchase the appropriate formal wear. Details will be given in class.

### MUSIC APPRECIATION (KMC615)

This course provides students with opportunities to develop individual musicality, responsibility, creativity, and stewardship through a comprehensive music education curriculum that dates from 1000 to 2000. This course provides students the opportunity to examine the western European classical musical genres of approximately 1,000 years from early music, to baroque, classical, romantic, impressionistic, and 20th century music. This course provides a historical and critical survey of this music with an emphasis on how this music uniquely treats the human experience by enhancing and enriching the students' quality of life. Students will explore the musical influences of current musical artists and trace these influences inversely through the Renaissance. Emphasis will be placed on the artists and composers who have made significant contributions to the evolution of musical styles and popularity throughout history. Specific artists and their works will be examined as well as the creative and developmental steps in the aesthetic process. This course is offered for dual credit with Friends University.

### HISTORY OF ROCK & ROLL I (KMC616)

This course provides students with opportunities to develop individual musicality, responsibility, creativity, and stewardship through a comprehensive music education curriculum that dates from 1946 to 1967. The goal of the course is to introduce students to the history of rock and roll music including: early American folk, jazz, country, pop, rock-a-billy, and rhythm and blues, and provide students with an understanding of how earlier music genres influenced current rock and roll music. The student will explore how society influences music and how music influences society, as well as the musical influences on current musical artists and trace these influences inversely through the early 20th century. This course will increase the students listening skills, providing them with a stronger knowledge background in the elements of music and the genres of music. Emphasis will be placed on the artists and composers who have made significant contributions to the evolution of musical styles and popularity throughout history.

### HISTORY OF ROCK & ROLL II (KMC617)

This course provides students with opportunities to develop individual musicality, responsibility, creativity, and stewardship through a comprehensive music education curriculum that dates from 1967 to 2001. The goal of the course is to continue to explore the history of rock and roll music including: classic rock, country crossover, punk, metal, and rap, and provide students with an understanding of how earlier music genres influenced current rock and roll music. The student will explore how society influences music and how music influences society, as well as the musical influences on current musical artists and trace these influences inversely through the early 20th century. This course will increase the students listening skills, providing them with a stronger knowledge background in the elements of music and the genres of music. Emphasis will be placed on the artists and composers who have made significant contributions to the evolution of musical styles and popularity throughout history.

# MATHEMATICS

\*Courses brought into KMC from outside schools will require testing.\*

Course Title	Grade Level	Required	Elective	Credit	Prerequisite(s)
<b>Principles of Math</b> 90030	9		X	1	<ul style="list-style-type: none"> <li>Placement Test results</li> <li>Split Class with Conceptual Physical Science (KMC1902)</li> <li>Concurrent enrollment in Algebra 1</li> </ul>
<b>Algebra I</b> KMC1403	9, 10, 11, 12	X		1	<ul style="list-style-type: none"> <li>Placement Test results</li> </ul>
<b>Honors Algebra I</b> KMC1401	9	X	X	1	<ul style="list-style-type: none"> <li>Placement Test results</li> </ul>
<b>Geometry</b> KMC1405	10, 11, 12	X		1	<ul style="list-style-type: none"> <li>Algebra I</li> </ul>
<b>Honors Geometry</b> KMC1419	9, 10	X	X	1	<ul style="list-style-type: none"> <li>Placement Test results</li> <li>"B" or better grade in Honors Algebra I</li> </ul>
<b>Algebra II</b> KMC1415	10, 11, 12	X	X	1	<ul style="list-style-type: none"> <li>Passing grade in Algebra I, Geometry</li> </ul>
<b>Honors Algebra II</b> KMC1412	10, 11		X	1	<ul style="list-style-type: none"> <li>"B" or better in Honors Algebra I</li> <li>"B" or better in Honors Geometry</li> </ul>
<b>Algebra III</b> KMC412	11, 12		X	.5	<ul style="list-style-type: none"> <li>Passing grade in Algebra II</li> </ul>
<b>Intermediate Algebra</b> KMC413 (S1) KMC413B (S2)	12		X	.5	<ul style="list-style-type: none"> <li>ACT math score of 21; Spring semester requires Algebra III or ACT math score of 21 or higher</li> </ul>
<b>College Algebra</b> KMC419	12		X	.5	<ul style="list-style-type: none"> <li>"B" or better in Algebra II or Intermediate Algebra</li> <li>ACT Math score of 21 or better</li> <li>Concurrent enrollment with Newman University (requires 3.0 GPA)</li> </ul>
<b>Statistics</b> KMC423 Second Semester Only	12		X	.5	<ul style="list-style-type: none"> <li>"B" or better in College Algebra or AP Calculus I</li> <li>ACT math score of 21 or higher</li> <li>Concurrent enrollment with Newman University (requires 3.0 GPA)</li> </ul>
<b>Trigonometry</b> KMC409 (S1) KMC411 (S2)	10, 11, 12		X	.5	<ul style="list-style-type: none"> <li>"B+" or better in Algebra II</li> <li>"A" or better in Honors Algebra II when concurrent enrollment</li> </ul>
<b>Intro to Calculus</b> KMC410	11, 12		X	.5	<ul style="list-style-type: none"> <li>"B" or better in Algebra II</li> <li>"B" or better in Trigonometry</li> </ul>
<b>AP Calculus I</b> KMC1420	11, 12		X	1	<ul style="list-style-type: none"> <li>"B" or better in Trigonometry</li> <li>Introduction to Calculus if Honors Algebra II not taken</li> <li>Introduction to Calculus if Honors Algebra II not taken and more than one semester below an "A" in any math class</li> <li>Concurrent enrollment with Newman University (requires 3.0 GPA)</li> </ul>
<b>AP Calculus II</b> KMC1422	12		X	1	<ul style="list-style-type: none"> <li>"B" or better in AP Calculus I</li> <li>Concurrent enrollment with Newman University (requires 3.0 GPA)</li> </ul>

# MATHEMATICS OVERVIEW CHART

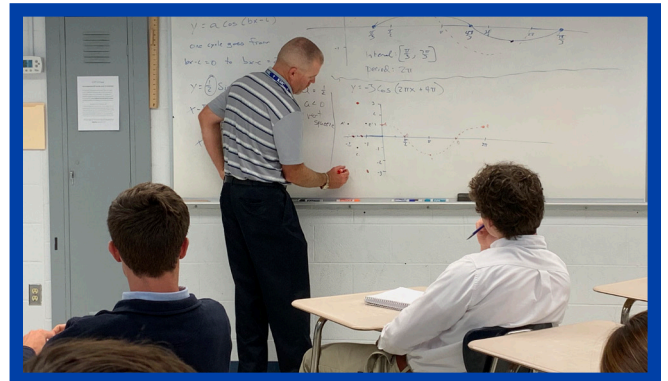
FRESHMAN MATHEMATICS	SOPHOMORE MATHEMATICS	JUNIOR MATHEMATICS	SENIOR MATHEMATICS
Algebra I	Geometry	Algebra II	Algebra III/ Intermediate Algebra
H Algebra I*	H Geometry*	H Algebra II*	Trigonometry*/ Intro to Calculus*
			College Algebra*/ Trigonometry or Statistics*
		H Algebra II and Trigonometry*	College Algebra*/ Intro to Calculus*
			AP Calculus I*
H Geometry*	H Algebra II*	Trigonometry and Intro to Calculus*	College Algebra*/ Statistics*
	H Algebra II and Trigonometry	AP Calculus I*	AP Calculus I* AP Calculus II*

\* Fulfills Cum Laude requirements

## COURSE DESCRIPTIONS: MATHEMATICS

### PRINCIPLES OF MATH (90030)

This course is designed for the freshman student in need of a full year of mathematics plus the basic abstractions of Algebra I. Emphasis is given to understanding perimeter areas and volumes, integers, fractions, mixed numbers and decimals in the four basic operations. Simple concepts of algebra including variables, solving equations, integral exponents and ratio work problems are included. Concurrent enrollment in Conceptual Physical Science and Algebra I.



### ALGEBRA I (KMC1403)

This year-long course includes applying properties of real numbers, solving linear and systems of equations, determining equations of lines, solving equations using polynomial factoring, applying properties of exponents, combining algebraic fractions, solving equations involving proportions, finding solutions to inequalities in one and two variables, simplifying radical expressions, solving radical equations, and applying the Pythagorean Theorem.

### HONORS ALGEBRA I (KMC1401)

This course includes solving equations and inequalities, working with different sets of numbers, graphing, polynomial factoring, working with radicals, working with exponents, knowing algebraic properties, solving simultaneous equations, and writing algebraic proofs. The student will learn problem solving strategies, the vocabulary of mathematics and number theory. This is a rigorous course.

### GEOMETRY (KMC1405)

This course consists of learning about points, segments, rays, lines, and angles and how they relate to one another in triangles, polygons, parallel lines, and circles. The course will also cover reasoning, proofs, area, volume, and right triangle trigonometry. The student must have a scientific calculator for this class. NOTE: See instructor for what type to purchase.

### HONORS GEOMETRY (KMC1419)

The emphasis is placed on student participation in class discussion and student discovery of various theorems and postulates. The usual geometric definitions and theorems are studied at length, and transformation geometry is introduced. The student should be able to write proofs quickly and correctly. A compass, protractor and straight edge are required. The student must also have a scientific calculator for this class. NOTE: See instructor for what type to purchase.

### ALGEBRA II (KMC1415)

Specific topics covered in this course include a brief review of Algebra I in addition to quadratic, polynomial, radical, exponential, logarithmic, and rational functions. The course will also cover conic sections, probability and counting methods, sequences and series, and trigonometric ratios. The student must have a scientific calculator for this class. NOTE: See instructor for what type to purchase.

### HONORS ALGEBRA II (KMC1412)

Topics include expanding, factoring, simplifying polynomials, problem solving, functions, quadratic formulas, complex numbers, analytic geometry, matrices, determinants, probability and statistics, number theory and algebraic proofs. The student will be required to learn and understand the vocabulary of mathematics. This course is intended to provide the college-bound student with a strong base in Algebra. **If the student plans to take Calculus the next year, he/she needs to enroll in Trigonometry concurrently in the second semester. The student will not be allowed to Calculus without Trigonometry.** The student must have a scientific calculator for this class.

### ALGEBRA III (KMC412)

This semester-only class gives the average student who is college-bound an opportunity to improve his/her Algebra skills. This course is a review of Algebra II with a focus on systems of equations, functions and polynomials. The student must have a scientific calculator for this class.

### INTERMEDIATE ALGEBRA (KMC413)

This semester class closely follows the topics normally found in a college-level intermediate Algebra class. It is designed to prepare a student for College Algebra. The student must have a scientific calculator for this class.

### COLLEGE ALGEBRA (KMC419)

This semester class is a college course and is consequently more difficult than Intermediate Algebra. It includes the study of equations, inequalities, polynomials, rational functions, exponential and logarithmic functions and matrices. These are explored by way of numeric, graphical, and algebraic techniques using technology as well as traditional methods. Applications of Algebra in many fields are included. Concurrent enrollment for college credit through Newman University (Course No. 1043) is required. A graphing calculator from the TI-80 series, preferably a TI-84, is required.

### STATISTICS (KMC423)

This semester class is a college course. It is a study of descriptive statistics, combinatorics, probability, distributions, and inferential statistics. This is for students who are interested in careers where compilation of data is useful. College Algebra or Calculus I is a prerequisite to this course. Concurrent enrollment for college credit through Newman University (Course No. 2033) is required. A graphing calculator from the TI-80 series, preferably a TI-84, is required.

### TRIGONOMETRY (KMC409 or KMC411)

This second semester class will include trigonometry functions, circular functions, application of trigonometry, right triangles, graphs, identities, inverse functions, equations, and applications involving triangles and the Laws of Sines and Cosines. **The student must have completed Trigonometry with a "B" or better before being admitted to Introduction to Calculus.** The student must have a scientific calculator for this class.

### INTRODUCTION TO CALCULUS (KMC410)

This second semester class includes vocabulary, concepts, and use of traditional theorems of basic Calculus. This course is not designed to replace any beginning college-level Calculus course. The student must have a scientific calculator for this class.

### AP CALCULUS I (KMC1420)

This class is taught as a college course. Students must take responsibility for more difficult and independent work. Topics include limits and applications of derivatives and integrals. Concurrent enrollment for college credit is available through Newman University (Course No. 2015). A graphing calculator from the TI-80 series, preferably a TI-84, is required.

### AP CALCULUS II (KMC1422)

This class is taught as a college course. Topics include methods of integration, conic sections, parametric and polar equations, infinite series and vectors. Concurrent enrollment for college credit is available through Newman University (Course No. 2025). A graphing calculator from the TI-80 series, preferably a TI-84 is required.

# BUSINESS

Course Title	Grade Level	Required	Elective	Credit	Prerequisite(s)
<b>Accounting I</b> KMC1507	10, 11, 12			1	<ul style="list-style-type: none"> <li>• "C" or better grade in Algebra I</li> <li>• College credit through Newman for Acct. 2113, with a GPA of 3.0</li> </ul>
<b>Computer Applications I</b> KMC501 (S1) KMC501B (S2)	9, 10, 11, 12	X		.5	<ul style="list-style-type: none"> <li>• Fulfills graduation requirement</li> </ul>
<b>Career &amp; Financial Planning</b> KMC513	10, 11, 12	X		.5	<ul style="list-style-type: none"> <li>• Fulfills graduation requirement</li> </ul>
<b>Business Economics</b> KMC509	10, 11, 12		X	.5	
<b>Personal/Business Law</b> KMC510	10, 11, 12		X	.5	<ul style="list-style-type: none"> <li>• Computer Application</li> </ul>
<b>Business Marketing</b> KMC515	9, 10, 11, 12		X	.5	
<b>Web Design</b> KMC514	9, 10, 11, 12		X	.5	<ul style="list-style-type: none"> <li>• "B" or better in Algebra I</li> </ul>
<b>Youth Entrepreneurs</b> KMC1512	10, 11, 12			.5	

## COURSE DESCRIPTIONS: BUSINESS

### ACCOUNTING I (KMC1507)

This year-long elective course teaches the fundamental principles of accounting. Real-life business transactions are recorded in journals and ledgers. Financial statements such as balance sheets and income statements are prepared. Concepts learned each semester are reinforced through the preparation of business simulation packets. There is one unit on automated accounting. This class is recommended for any student thinking about a business major in college. College credit is available through Newman University. Student must have a 3.0 GPA.



### COMPUTER APPLICATIONS I (KMC501 or KMC501B)

This semester course is designed to provide computer application skills in Google Suite applications including, Google Docs, Google Sheets, Google Slides, and Google Sites. This overview course of computer applications includes computer terminology, introduction to computer hardware, software applications and procedures and keyboarding. Students will develop their understanding through readings, lectures, worksheets, group and individual projects, presentations, and assessments. This course is required to fulfill the Business half credit required for graduation.

### CAREER AND FINANCIAL PLANNING (KMC513)

This semester course is based upon real-life planning and decision making in the areas of career and personal money management. The career portion is built upon Career Cruising. Students explore their interests, skills, and strengths as they relate to suitable careers. Training and education needed for chosen careers are also explored. Other topics include resume writing, job responsibilities, and salaries. The financial planning part of the class will cover budgeting, purchasing a house or car, banking, checking and savings, acquiring credit, avoiding debt, obtaining and using credit cards, obtaining and keeping a good credit score, creating a financial plan, choosing investments and analyzing insurance needs.

### BUSINESS ECONOMICS (KMC509)

This semester course teaches fundamental concepts for microeconomics and macroeconomics. Topics covered will include: economic systems, supply and demand, the role of government, taxation, saving and investing and world trade. Current economic topics will be discussed.

### PERSONAL/BUSINESS LAW (KMC510)

This semester course helps students understand their legal rights as individuals and as members of society. Topics include law history, ethics, civil and criminal law, and juvenile and family law. Students will experience a field trip to the county courthouse and/or to the jail. A mock trial will be the culminating project.

### BUSINESS MARKETING (KMC515)

This semester class examines the marketing of sports and sports entertainment as well as the world of entertainment marketing. Students will learn the technological tools needed in the marketing field (web search, spreadsheet, presentation and database skills). Promotional influences relating to this field will be covered.

### WEB DESIGN (KMC514)

This semester class introduces students to the fundamental principles of web design including planning, evaluating, and testing websites. In this course, students will gain a foundational knowledge of website creation and apply the knowledge to the planning, designing, and developmental projects and their own websites. At the end of the course, students will be comfortable creating, coding and posting basic HTML and CSS files to the internet. Students will be encouraged to think critically through class interactions, assignments and projects.

### YOUTH ENTREPRENEURS (KMC1512)

This semester elective course is designed to instruct students on aspects of the formation, ownership, and operation of a small business. Students will develop original businesses while creating a unique business plan. For more detailed information, see [www.yeks.org](http://www.yeks.org).



## PHYSICAL EDUCATION

Course Title	Grade Level	Required	Elective	Credit	Prerequisite(s)
<b>Physical Education</b> KMC1956 - Girls Only	9, 10	X		1	• Girls only
<b>Physical Education</b> KMC1960 - Boys Only	9, 10	X		1	• Boys only
<b>Lifetime Fitness</b> KMC955(S1) KMC956(S2)	10, 11, 12		X	.5	• Physical Education • Indicate semester preference • Repeatable course
<b>Weightlifting</b> KMC958(S1) KMC962(S2)	10, 11, 12		X	.5	• Physical Education • Indicate semester preference • Repeatable course
<b>Strength Training</b> 617BC/6172BC	9		X	1	• 90% attendance of summer weights program or admin approval
<b>Advanced Weights</b> KMC960	11,12		X	.5	• One year of Strength Training or Weightlifting
<b>Sports Medicine</b> CHS14072	10, 11, 12		X	.5	• Application/interview process

# COURSE DESCRIPTIONS: PHYSICAL EDUCATION

## PHYSICAL EDUCATION (KMC1956 or KMC1960)

This course is designed to teach skills and teamwork through a variety of physical activities including: volleyball and football during the fall, basketball and aerobics during the winter, and tennis and softball during the spring. These activities and others are offered to the student in the hopes that an appreciation of sports will lead to a lifetime of recreation and well-being. A six-week health and wellness unit is incorporated into this course. **Certain injuries and health concerns can limit or exclude enrollment and participation in P.E. If injuries or health concerns prohibit an individual's ability to participate for an extended period of time (9 days or more), other course options may be pursued.**

## LIFETIME FITNESS (KMC955/KMC956)

Lifetime Fitness is an individualized, performance-based semester course designed to give students the knowledge and skills necessary to self-assess, create, conduct, evaluate, and redesign personal fitness programs. Lifetime Fitness may be taken each semester, sophomore through senior years. The course combines classroom and activity-based learning with a focus on proper nutrition and the mastery of skills necessary for students to monitor their personal lifetime fitness.

## WEIGHTLIFTING (KMC958/KMC962)

This semester-only course offers the student an opportunity to learn how to lift weights using proper technique for the purpose of improving his/her athletic ability, preventing injury, developing confidence and rehabilitation. Testing and evaluation is done two to three times during the semester in the areas of agility, lower body power, speed, conditioning, weights, machines, and the importance of flexibility and motivation.



## ADVANCED WEIGHTS (KMC960)

This is an extremely high intensity course designed to meet the needs of highly motivated students for team needs. Students lift weights four days per week, Monday-Thursday, from 6:30 am - 7:30 am. Students should expect to work extremely hard and see significant increases in strength and power. This course may be repeated for additional credit.

## STRENGTH TRAINING (617BC/6172BC)

An introductory to weightlifting and overall physical development. This course will focus on elements of health while incorporating the fundamentals of weightlifting. This course may fulfill the P.E. requirement.

## SPORTS MEDICINE (CHS14072)

Sports Medicine will provide students with a formal introduction to the athletic training profession and how it partners with related medical professions. Students will learn the basic components of sports medicine and the multidisciplinary approach to the specialized health care that is athletic training. The course will utilize both instructional methods and hands-on lab time to cover units including basic techniques in taping, bandaging, and first aid to treat and prevent athletic and orthopaedic injuries, basic sports medicine terminology, musculoskeletal anatomy, and the etiology, symptoms, and immediate care of common injuries sustained by athletes. The information covered in this course will translate directly into the skills needed to participate in the afterschool aspects of KMC's Sports Medicine Student Aide Program. For this reason, this course is required as a prerequisite or must be taken concurrently in order for students to be admitted into the KMC Sports Medicine Student Aide Program. This course will also serve as a pathway to those students with an interest in pursuing a formal education in fields such as athletic training, occupational therapy, physical therapy, and orthopaedic medicine for those students with such aspirations. Students may still enroll in this class and choose not to participate in the KMC Sports Medicine Student Aide Program. **Prior to enrollment, prospective students must complete an application process.** Students will be required to submit: a completed application form, a cumulative summary of their grades including GPA, and three academic or extracurricular references. After submission, the students will be contacted to schedule an interview with the instructor/athletic trainer. Admission to the course will be granted based on the quality and completion of the application process. Space within the course and program are limited.

# FAMILY & CONSUMER SCIENCES

Course Title	Grade Level	Required	Elective	Credit	Prerequisite(s)
<b>Clothing I</b> KMC801	10, 11, 12		X	.5	
<b>Clothing II</b> KMC802	10, 11, 12		X	.5	• "C" or better grade in Clothing I
<b>Clothing III</b> KMC803	11, 12		X	.5	• "B" or better grade in Clothing II
<b>Fashion Merchandising</b> KMC804	10, 11, 12		X	.5	
<b>Foods I</b> KMC807	10, 11, 12		X	.5	
<b>Foods II</b> KMC808	10, 11, 12		X	.5	• "C" or better grade in Foods I
<b>Child Development</b> KMC810	10, 11, 12		X	.5	
<b>Relationships</b> KMC081	10, 11, 12		X	.5	
<b>Interior Design</b> 378BC	10, 11, 12		X	.5	

## COURSE DESCRIPTIONS: FAMILY & CONSUMER SCIENCES

### CLOTHING I (KMC801)

This semester-only elective course is offered to all who wish to gain a basic knowledge of clothing construction. The student will be exposed to choosing a pattern and fabric and the fundamentals of construction. Also, the student will learn the care and use of sewing machines and other equipment. Individual projects will be chosen by the student to advance his/her skills. The students will supply their own fabric, tools, and patterns.

### CLOTHING II (KMC802)

This semester-only elective course will review the basic techniques in the use of the sewing machine, and include the further study of fabrics and patterns. The students will choose their own projects, and will supply their own fabric, tools, and patterns.

### CLOTHING III (KMC803)

This semester-only elective course will build on the skills/techniques learned in Clothing I and Clothing II. The students will choose more advanced projects and will supply their own fabric, tools, and patterns.

### FASHION MERCHANDISING (KMC804)

This semester-only elective course is an introduction to the fashion industry. Students will explore the evolution of fashion and its relationship to society, culture, and individual psychology. Students will be introduced to the textiles used in apparel; the designing, manufacturing, and marketing of apparel and the careers associated with them. Students will also explore what clothing communicates about the wearer and what each individual wants his/her wardrobe to communicate, including the effects of modest and immodest dressing.



### FOODS I (KMC807)

This semester-only elective course includes an introduction to basic cooking terminology, food preparation using hands-on lab experiences, and a unit of study on nutrition. Students work in cooperative groups to plan labs and prepare food items. Food handling safety and sanitation is studied and practiced throughout the course.

### FOODS II (KMC808)

This semester-only elective course introduces the student to advanced food preparation techniques building upon what was learned in Foods I. Special topics in nutrition wellness are emphasized. Meal planning and barbeque basics using a gas grill are included in this curriculum.

### CHILD DEVELOPMENT (KMC810)

This semester-only elective is a course in human growth and development, studying the physical, intellectual, and social/emotional development of children from infancy through the teen years. Developmental theories and guidelines will be studied. At least one field trip involving interaction with preschoolers is part of the curriculum. There is no baby simulation in this course.

### RELATIONSHIPS (KMC081)

This semester-only elective is relevant in every teen's life. The course is designed to help young men and women develop the tools needed to pursue successful relationships in many areas of life. Course content includes personality types, communication skills, how to have healthy and positive friendships, family and dating relationships, as well as topics relating to future marriage and family life.

### INTERIOR DESIGN (378BC)

Interior Design is a one semester course which introduces the components of interior design. Students will explore the elements and principles of design and how they are applied in interior design. They will also identify various architectural and furniture styles. Using standard architectural and interior design practices, students will create both hand-drawn and computer-generated floor plans. A final project will be required which may include designing a home, choosing its decor, and creating a design board suitable for presentation to clients.

# SCIENCE

Course Title	Grade Level	Required	Elective	Credit	Prerequisite(s)
<b>Conceptual Physical Science</b> KMC1902	9	X		1	<ul style="list-style-type: none"> <li>• Placement Test results</li> <li>• Split class with Principles of Math (90030)</li> <li>• Graduation requirement but not accepted by the Board of Regents</li> </ul>
<b>Freshman Physics</b> KMC909 (S1) KMC909B (S2)	9	X		.5	<ul style="list-style-type: none"> <li>• Placement Test results</li> </ul>
<b>Honors Freshman Physics</b> KMC910 (S1) KMC910B (S2)	9	X	X	.5	<ul style="list-style-type: none"> <li>• Placement Test results</li> </ul>
<b>Freshman Chemistry</b> KMC912 (S1) KMC912B (S2)	9	X		.5	<ul style="list-style-type: none"> <li>• Placement Test results</li> </ul>
<b>Honors Freshman Chemistry</b> KMC913 (S1) KMC913B (S2)	9	X	X	.5	<ul style="list-style-type: none"> <li>• Placement Test results</li> </ul>
<b>Biology</b> KMC1901	10	X		1	
<b>Honors Biology</b> KMC1903	9, 10	X	X	1	<ul style="list-style-type: none"> <li>• "B" or better in H Physics/H Chemistry</li> <li>• Freshman Advanced Placement Test</li> </ul>
<b>AP Biology</b> KMC836BC	11,12		X	1	<ul style="list-style-type: none"> <li>• "B" or better in H Biology</li> <li>• "B" or better in H Chemistry</li> </ul>
<b>Environmental Science &amp; Botany</b> KMC1933	11,12		X	1	
<b>Anatomy/Physiology</b> KMC1904	11,12		X	1	<ul style="list-style-type: none"> <li>• "C" or better grade in Biology</li> </ul>
<b>Honors Anatomy/Physiology</b> KMC1936	11, 12		X	1	<ul style="list-style-type: none"> <li>• "A" in Biology</li> <li>• "B" or better in H Biology</li> </ul>
<b>Chemistry</b> KMC1905	11, 12		X	1	<ul style="list-style-type: none"> <li>• "C" or better in Biology</li> <li>• Concurrent enrollment in Algebra II or higher or past enrollment with a "C" or better</li> </ul>
<b>Honors Chemistry</b> KMC1938	10, 11, 12		X	1	<ul style="list-style-type: none"> <li>• "A" in H Biology</li> <li>• "B" or better in H Freshman Chemistry I or H Freshman Physics</li> <li>• Concurrent enrollment in H Algebra II or higher</li> </ul>
<b>AP Chemistry II</b> KMC1940	11, 12		X	1	<ul style="list-style-type: none"> <li>• "A" in H Chemistry</li> <li>• "B" or better in H Algebra II</li> </ul>
<b>Physics</b> KMC1906	11,12		X	1	<ul style="list-style-type: none"> <li>• "C" or better in Algebra II</li> <li>• "C" or better in Chemistry</li> </ul>
<b>AP Physics A</b> KMC1943	11,12		X	1	<ul style="list-style-type: none"> <li>• "B" or better in H Chemistry</li> <li>• "B" or better in H Algebra II or higher</li> </ul>
<b>AP Physics C</b> KMC1942	11,12		X	1	<ul style="list-style-type: none"> <li>• "B" or better in H Chemistry</li> <li>• Concurrent enrollment in AP Calculus I</li> </ul>

# SCIENCE OVERVIEW CHART

FRESHMAN SCIENCE	SOPHOMORE SCIENCE	JUNIOR SCIENCE	SENIOR SCIENCE
Conceptual Physical Science	Biology	Chemistry or Environmental Science or Anatomy/Physiology	Chemistry or Environmental Science or Anatomy/Physical Science
Freshman Physics/ Freshman Chemistry	Biology	Chemistry or Environmental Science or Anatomy/Physiology	Physics or Chemistry
H Freshman Physics/ H Freshman Chemistry	H Biology	H Anatomy/Physiology or H Chemistry or H Physics	H Physics or AP Chemistry II or H Anatomy/Physiology or AP Physics C
H Biology	H Chemistry or H Anatomy/Physiology	AP Chemistry II or H Chemistry or H Anatomy/Physiology or H Physics	H Physics or AP Chemistry II or H Anatomy/Physiology or AP Physics C



## SCIENCE - Project Lead the Way

Course Title	Grade Level	Required	Elective	Credit	Prerequisite(s)
<b>Intro to Engineering Design (IED)</b> CHS21006	9, 10, 11, 12		X	1	
<b>Principles of Engineering (POE)</b> CHS21004	11, 12		X	1	• Intro to Engineering Design
<b>CATIA</b> CHS2106	11, 12		X	1	• Concurrent enrollment with Wichita State University
<b>Introduction to Computer Science</b> CHS41010	9, 10, 11,12		X	1	• "B" or better in Algebra I
<b>AP Computer Science Principles (AP CSP)</b> CHS41011	11, 12		X	1	• "A" in Introduction to Computer Science or with teacher approval
<b>AP Computer Science A (AP CSA)</b> CHS41012	11, 12		X	1	• "A" in AP Computer Science Principles or with teacher approval
<b>Engineering Design &amp; Development (EDD)</b> CHS21007	11, 12		X	1	• Intro to Engineering Design • Principles of Engineering

# COURSE DESCRIPTIONS: SCIENCE

## CONCEPTUAL PHYSICAL SCIENCE (KMC1902)

This course is designed to strengthen the student's ability to make observations, collect data, interpret the data, and then form conclusions. It provides the student with a conceptual understanding of the world around them through the concepts of introductory physics and chemistry. This course caters to the student that may have difficulty with math and reading skills necessary for the regular Freshman Chemistry and Freshman Physics courses. This course provides the student the opportunity to study the description and interpretation of basic physical phenomena through activity-oriented learning situations. The learning of Physical Science through active participation by the student is emphasized, but with a lighter emphasis on computation. This course helps prepare the student for additional science classes in high school. Concurrent enrollment in Principles of Math.

## FRESHMAN PHYSICS (KMC909 or KMC909B)

This class will cover concepts that serve as a foundation for the college preparatory Physics Class taken later in high school. Topics covered include types of energy (kinetic, potential, sound, electricity, heat), energy transformations, Newton's laws of motion and momentum. Basic math and graphical analysis skills are used to solve problems.

Graphing and graph interpretation are skills heavily assessed in this semester course. Experimental design concepts are integrated into the instruction with these topics as well.



## HONORS FRESHMAN PHYSICS (KMC910 or KMC910B)

This honors physics class will cover concepts that serve as a foundation for honors and advanced placement science taken later in high school. Concepts covered include types of energy (kinetic, potential, sound, thermal, and electricity), energy transformations, Newton's laws of motion and momentum. Math skills are important for the calculations required for this class. Experimental design, chart reading, and graphic analysis are integrated into the unit.

## FRESHMAN CHEMISTRY (KMC912 or KMC912B)

This class will cover concepts to serve as a foundation for college preparatory chemistry taken later during high school. Topics covered include the structure of the atom, states of matter and how they act, chemical formulas, chemical reactions, balancing chemical equations, solutions, acids and bases. In addition to the chemistry concepts, experimental design will be addressed as well. Basic math skills are needed for this course.

## HONORS FRESHMAN CHEMISTRY (KMC913 or KMC913B)

This honors class will cover concepts that serve as a foundation for honors and advanced placement chemistry courses taken later during high school. Topics covered include kinetic molecular theory, structure of the atom, chemical formulas, chemical reactions, and balancing chemical equations. In addition to the chemistry concepts, experimental design, and metric measurement are addressed. Math skills are needed to be successful in this course; dimensional analysis, gas law problems, mole conversions and molarity are also studied.

## BIOLOGY (KMC1901)

This course provides the student a study of the fundamentals of life science. It includes a detailed study at the cellular level and progressing through the organism level, the general structure of organisms is studied. With an understanding of the basic organism structure, ecological principles, cell structure and function, science modeling, data interpretation, and experimental design are emphasized in this course. Along with fundamental principles of science, skills such as observation, data recording, experimental design and write-up, and lab equipment use are stressed.

## HONORS BIOLOGY (KMC1903)

This course offers the student an in-depth study of the fundamentals of life science through self-directed projects, presentations, and research. Topics for the course include those as described in regular Biology while providing expanded opportunities for studying the concepts in detail. Skills in observation, data recording, experimental design and write-up, and lab equipment use are stressed.

### AP BIOLOGY (KMC836BC)

This course is an introductory college-level biology course. Students enhance their understanding of biology through inquiry-based investigations as they explore the following topics: evolution, cellular processes-energy and communication, genetics, information transfer, ecology, and interactions. There are four Big Ideas on which AP Biology is based:

- The process of evolution explains the diversity and unity of life.
- Biological systems utilize free energy and molecular building blocks to grow, to reproduce, and to maintain homeostasis.
- Living systems store, retrieve, transmit, and respond to information essential to life processes.
- Biological systems interact, and these systems and their interactions possess complex properties.

### ENVIRONMENTAL SCIENCE & BOTANY (KMC1933)

This course covers environmental issues including ecological principles and human influences on ecosystems. Emphasis is placed on field studies, the bio-diversity of plants and animals, and how environmental changes affect them. Special emphasis is placed on botany.

### ANATOMY AND PHYSIOLOGY (KMC1904)

This course takes an in-depth look at the design and functions of the human body as a whole. The course teaches the student how to better understand the keys to daily biological functions, personal health and health careers. It also covers pertinent information concerning health maintenance. Lab work consists of dissection of lower mammalian organisms and their major body tissues, with an emphasis on structure and function.

### HONORS ANATOMY AND PHYSIOLOGY (KMC1936)

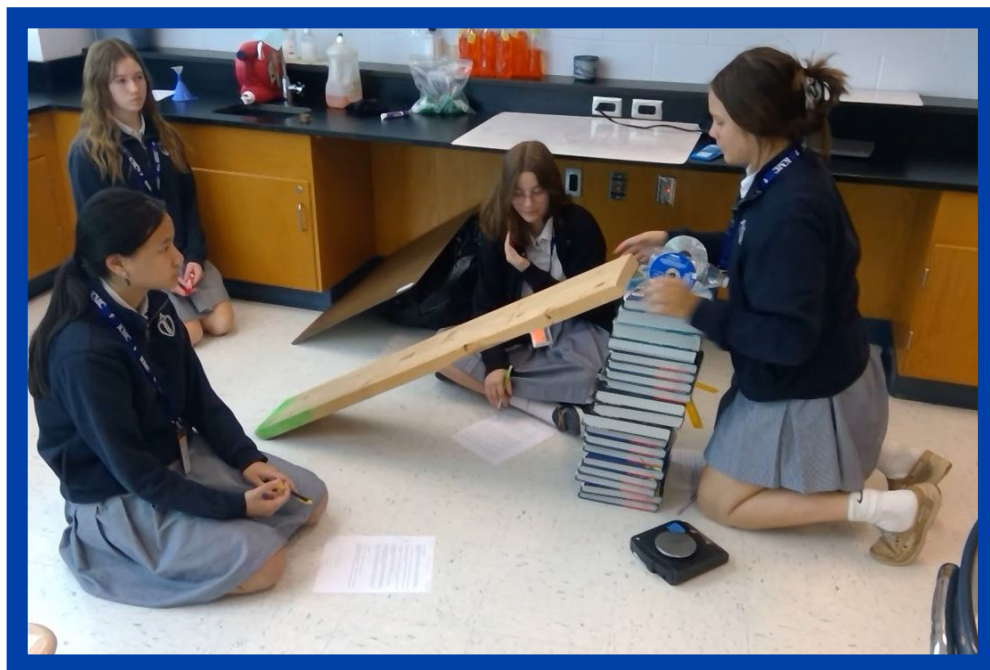
This is a rigorous course taught at an accelerated rate. Body systems and functions are reviewed. In addition to Anatomy class materials, students will perform laboratory research with emphasis on medical terminology.

### CHEMISTRY (KMC1905)

This lecture/laboratory course focuses on investigations into Chemistry's "traditional" concepts including measurement, classification, subatomic and molecular structure, gas laws, experimental design, stoichiometry, periodic trends, and kinetic molecular theory. Additional introductory overviews include topics such as organic chemistry and nuclear chemistry.

### HONORS CHEMISTRY (KMC1938)

This course includes a closer, more thorough study of subject areas introduced in Chemistry. The student will be introduced to titrations. Math and analysis skills are needed.



### AP CHEMISTRY II (KMC1940)

This lecture/laboratory course is designed to follow Honors Chemistry. Major emphasis is placed on further investigations into chemical equilibria, analytical applications, instrumental analysis, nuclear chemistry and organic chemistry. Supplemental studies in the fields of biochemistry, electrochemistry, environmental chemistry and current issues and research are included. The goal for the course is to prepare the student for the Advanced Placement Chemistry exam.

### PHYSICS (KMC1906)

This course will cover Newtonian mechanics, work, power, electricity, waves (sound, mechanical, and light). Data is collected through activities with probes and video. Students should expect to use basic triangle trigonometry and algebra to solve problems. The ability to communicate conceptual concepts is assessed in each unit.

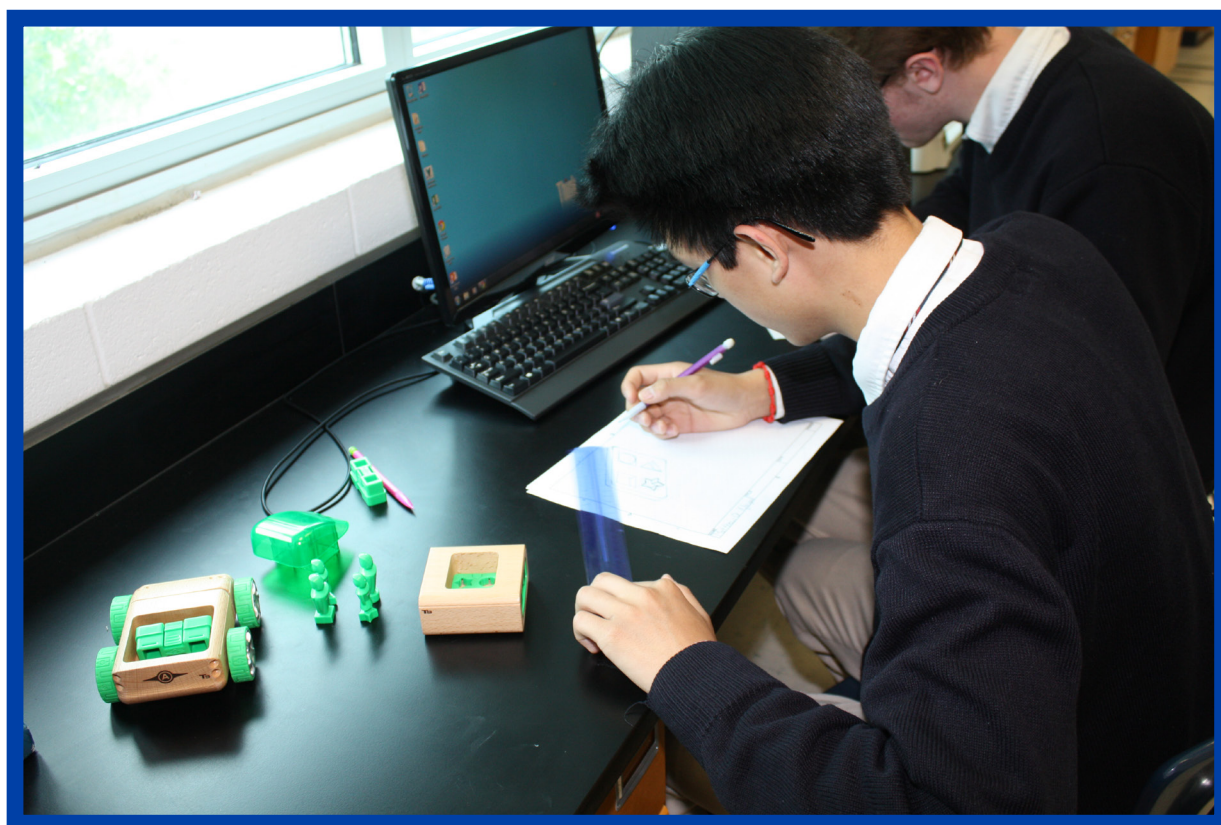


### AP PHYSICS A (KMC1943)

This is a more rigorous course than Physics with heavy emphasis on upper level Math skills. Some understanding of Calculus would be beneficial, but the main emphasis is on concepts utilizing Algebra II and Trigonometry skills. This course is a foundational algebra-based physics course exploring the principles of Newtonian mechanics, work, energy, power, and fluid mechanics. Students will do hands-on laboratory work to investigate science phenomena. It is recommended that students save their lab work in a notebook as colleges may request to see it for granting lab credit.

### AP PHYSICS C (KMC1942)

AP Physics C (Mechanics Only) is a calculus-based course emphasizing several components that provide a rigorous treatment of the principles of classical mechanics, including kinematics, dynamics, conservation of energy, momentum, and angular momentum, torque and rotational dynamics, oscillations and universal gravitation. The sequence of topics is traditional and relies on the College Board requirements. It is equivalent to the first semester calculus-based physics course offered in the first or second years of college. Theory, discussion, labs and problem solving are the major tools for the students' education. As an advanced placement (college-level) course, students can expect to spend several hours a week doing coursework.





## COURSE DESCRIPTIONS: PROJECT LEAD THE WAY (PLTW)

*PLTW Engineering is a program applying engineering, science, math and technology to solve complex, open-ended problems in a real-world context. Students focus on the process of defining and solving a problem, not on getting the "right" answer. They learn how to apply STEM knowledge, skills and habits to make the world a better place through innovation.*

### Foundation Courses:

#### INTRODUCTION TO ENGINEERING DESIGN (IED) (CHS21006)\*

Students dig deep into the engineering design process, applying math, science and engineering standards to hands-on projects. They work both individually and in teams to design solutions to a variety of problems using 3D modeling software, and document their work in an engineering notebook.

#### PRINCIPLES OF ENGINEERING (POE) (CHS21004)

Application of the Introduction to Engineering Design class is reinforced through both individual and group projects by introducing students to the principles and theories of basic engineering applications. Explorations include how simple machines affect work and energy; the impact of statics, material properties, thermodynamics, and fluid properties on simple design ideas; an introduction to simple machine coding; and properties of simple motion.

### Capstone Course:

#### ENGINEERING DESIGN AND DEVELOPMENT (EDD) (CHS21007)

The knowledge and skills students acquire come together in EDD as they identify an issue and then research, design and test a solution ultimately presenting their solution to a panel of engineers. Students apply the professional skills they have developed to document a design process to standards completing EDD ready to take on any post-secondary program or career.

### Specialized Courses:

#### CATIA (CHS2106)

This course is an interdisciplinary curriculum that prepares graduates for a variety of positions in manufacturing design. All students complete a core set of courses selected to provide a well-rounded understanding of design. This program also allows students to select a focus for their design studies from two different tracks — Mechanical Design or Mechanical Engineering Design. Topics include hands-on instruction in current technical competency areas including Computer Aided Drafting (CAD), Machine and Tool Design, Computer Numerical Control (CNC), Electrical Design, 3-D Solid Modeling, CATIA and ENOVIA LCA. CATIA and ENOVIA courses are taught in conjunction with the National Institute of Aviation Research (NIAR).

#### INTRODUCTION TO COMPUTER SCIENCE (ICS) (CHS41010)

This year-long course introduces students to computational thinking based on the award-winning Beauty and Joy of Computing at UC Berkeley, using the Snap! visual programming language and Python®. Students will explore a variety of basic computational thinking and programming concepts through a project-based learning environment. Students will experience the major topics, big ideas, and computational thinking practices used by computing professionals to solve problems and create value for others. This course will empower students to develop computational thinking skills while building confidence that prepares them to advance to Computer Science Principles and Computer Science A. ICS is based from PLTW's Computer Science Essentials (CSE) sponsored by TEALS. TEALS (Technology Education and Literacy in Schools) is a Microsoft Philanthropies program that connects classroom teachers with tech-industry volunteers to create sustainable CS programs.

## AP COMPUTER SCIENCE PRINCIPLES (AP CSP) (CHS41011)

Throughout this year-long course, students learn the fundamentals of coding, data processing, data security, and task automation, while learning to contribute to an inclusive, safe, and ethical computing culture. Using Python® as a primary tool, students explore and become inspired by career paths that utilize computing, discover tools that foster creativity and collaboration, and use what they have learned to tackle challenges like app development and simulation. The course promotes computational thinking and coding fundamentals and introduces computational tools that foster creativity and collaboration. Computer Science Principles also aims to build students' awareness of the tremendous demand for computer scientists and those who have computational thinking skills. This course aligns with the College Board's AP Computer Science Principles exam requirements, effective 2020-21. This course is endorsed by the College Board, giving students the opportunity to take the AP CSP exam for college credit.

## AP COMPUTER SCIENCE A (AP CSA) (CHS41012)

With Computer Science A, students cultivate their understanding of coding through analyzing, writing, and testing code as they explore concepts like modularity, variables, and control structures. In this year-long course, students collaborate to create original solutions to problems of their own choosing by designing and implementing user interfaces and Web-based databases, as well as creating a game for their friends or an app to serve a real need in their community. This course provides further alignment across the Computer Science program and maximizes the student and teacher experience. The course emphasizes object-oriented programming and design using the Java programming language. AP Computer Science A is an introductory college-level computer science course. This course aligns with the College Board's AP Computer Science A exam requirements, effective 2020-21. This course is endorsed by the College Board, giving students the opportunity to take the AP CSA exam for college credit.

*\*Denotes classes that are required to receive the PLTW and college credit towards an engineering degree at PLTW universities.*

Arkansas Tech University  
Auburn University  
Bucknell University  
California State Polytechnic University  
California State University-Bakersfield  
California State University, East Bay  
Duke University  
Eastern Michigan University (EMU)  
Embry-Riddle Aeronautical University (Daytona Beach)  
Florida Gulf Coast University  
Georgia Southern University  
Indiana University-Purdue University Indianapolis(IUPUI)  
Iowa State University (ISU)  
Lawrence Technological University  
Milwaukee School of Engineering (MSOE)  
Minnesota State University Mankato  
Mississippi State University  
Missouri University of Science and Technology  
New Mexico State University

NHTI Concord's Community College  
North Dakota State University  
Northwestern State University of Louisiana  
Oklahoma State University  
Old Dominion University (ODU)  
Oregon Institute of Technology (OIT)  
Purdue University  
Rochester Institute of Technology (RIT)  
Rose-Hulman Institute of Technology  
Rowan University  
San Diego State University (SDSU)  
San Jose State University  
Sanford Research (USD)  
Seattle University  
Sinclair Community College  
St. Cloud State University  
Stevenson University  
The University of Kansas  
The University of Montana

University of Colorado at Colorado Springs (UCCS)  
University of Illinois-Chicago  
University of Illinois-Urbana Champaign  
University of Iowa  
University of Kentucky  
University of Maryland-Baltimore County  
University of Minnesota  
University of Nebraska-Lincoln  
University of Nevada Las Vegas (UNLV)  
University of New Haven  
University of Oklahoma Health Science Center (OUHSC)  
University of South Carolina  
University of Tennessee Chattanooga (UTC)  
University of Texas at Tyler  
Washington State University, Spokane  
Weber State University  
West Virginia University  
Wichita State University  
Worcester Polytechnic Institute (WPI)

## SOCIAL SCIENCES

Course Title	Grade Level	Required	Elective	Credit	Prerequisite(s)
<b>World History</b> KMC1700	9	X		1	
<b>Honors World History</b> KMC1701	9	X		1	<ul style="list-style-type: none"> <li>• Placement Test results</li> </ul>
<b>U.S. History I</b> KMC708	10	X		1	
<b>Honors U.S. History I</b> KMC702	10	X		1	<ul style="list-style-type: none"> <li>• "B" or better grade in H World History I</li> <li>• "A" in World History</li> </ul>
<b>U.S. History II</b> KMC1722	11	X		1	<ul style="list-style-type: none"> <li>• U.S. History I</li> </ul>
<b>AP U.S. History II</b> KMC1704	11	X		1	<ul style="list-style-type: none"> <li>• "A" in U.S. History I and department chair approval</li> <li>• "B" or better grade in H U.S. History</li> <li>• Concurrent enrollment with Newman University (requires 3.0 GPA and an "A" or "B" in first semester)</li> </ul>
<b>The History of WWII</b> KMC710	11, 12		X	.5	<ul style="list-style-type: none"> <li>• The co-enrollment or completion of US History II or AP US History II</li> </ul>
<b>Sociology</b> KMC705	11, 12		X	.5	
<b>Psychology</b> KMC706	11, 12		X	.5	
<b>American Government</b> KMC707	12	X	X	.5	<ul style="list-style-type: none"> <li>• U.S. History II</li> </ul>
<b>Honors American Government</b> KMC713	12				<ul style="list-style-type: none"> <li>• "B" or better grade in AP U.S. History II</li> </ul>

## COURSE DESCRIPTIONS: SOCIAL SCIENCES

### WORLD HISTORY (KMC1700)

This survey course is designed to provide the student with the basic ideas of cultures, civilizations, forms of government, religions, and revolutions beginning with the Renaissance up to and including the American Revolution. It is intended to give the student a link between the present and the past, and an appreciation of his/her heritage. First semester topics include, the Medieval Period, the Renaissance and the Reformation. Second semester topics include the Enlightenment, the Industrial Age and the Rise of National States.

### HONORS WORLD HISTORY (KMC1701)

This survey course is designed to provide the student with a greater level of understanding of the basic principles, concepts, and values as described above. Emphasis is placed on the continuing development of certain life skills, such as data gathering, decision making, map reading, note-taking, and interpersonal and study skills.

### U.S. HISTORY I (KMC708)

This is a general survey course which covers American history prior to 1900. The course is designed to provide the student with a greater understanding of the basic principles, concepts, and values that have developed out of American history (i.e. democracy, union, freedom, equality, etc.). An emphasis is placed on certain life skills, such as geographic literacy, critical thinking and reading.

### HONORS U.S. HISTORY I (KMC702)

This is a general survey course which covers American history prior to 1900. This course is designed to provide the student with a greater understanding of the basic principles, concepts, and values that have developed out of American history (i.e. democracy, union, freedom, equality, etc.). The course will be a more intensive study of the themes of American history. An emphasis is placed on certain life skills, such as geographic literacy, critical thinking and reading.

Students will be expected to read, analyze and interpret primary sources, research, and present information. This course demands greater independence and responsibility for success.

### U.S. HISTORY II (KMC1722)

This is a general survey course which covers American history from 1900 to present. The course will begin with America becoming a world power and will end with the role of America in our modern world. The course is designed to provide the student with a greater understanding of the basic principles, concepts, and values that have developed out of American history (i.e. democracy, union, freedom, equality, etc.). An emphasis is placed the development of certain life skills, such as geographic literacy, critical thinking, reading, research, and writing.

### AP U.S. HISTORY II (KMC1704)

This is a general survey course which covers American history from 1900 to present. The course will begin with America becoming a world power and will end with the role of America in our modern world. This is a question-intensive course designed to present varying viewpoints and themes and to provide the student with a greater understanding of the basic principles, concepts, and values that have developed out of American history (i.e. democracy, union, freedom, equality, etc.). An emphasis is placed on the development of certain life skills, such as geographic literacy, critical thinking, reading, research, and writing. This course demands greater independence and responsibility for success. College credit is available through Newman University (Course No. 1033). Student must have a 3.0 cumulative GPA and an A or B in the first semester of the class to be eligible for college credit.

### AMERICAN GOVERNMENT (KMC707)

This survey course covers the nation's government with special emphasis on each branch. The United States Constitution is covered along with the history of the "critical period," the origins of the document, and the amendment process (noting 27 Amendments). Current issues which pertain to the Constitution, such as civil liberties and rights, are examined. In addition, there is an overview of Kansas and different world governments. The student will be required to write a research paper.

### HONORS AMERICAN GOVERNMENT (KMC713)

This question-intensive course examines the origin, history, state/federal relationship and the three branches of our nation's government. A current event base of various relevant issues in our society is established while examining the Constitution. Students will be expected to participate fully in discussion and spend time outside of class witnessing different levels of government in action. A current event paper is required.

### THE HISTORY OF WORLD WAR II (KMC710)

This semester class will study the causes, the course and the implications of World War II, this greatest of 20th century conflicts. The course will cover 1939-1945, with an emphasis on American participation in the conflict. It will examine the causes and origins of the war, both in Europe and the Pacific; the early course of the war before the U.S. entry; Pearl Harbor and the first month of the United States entry into war; the American home front; the development of the "Europe First" strategy; the course of American military participation in both the European and Pacific theaters; the closing months of the war; and the Holocaust, the atomic bomb and the enduring significance of the historical memory of WWII in the United States. Students will be expected to read and analyze works by various WWII historians. Prerequisite is the co-enrollment or completion of U.S. II or AP U.S. II.

### SOCIOLOGY (KMC705)

This course is an overview of the various theories and concepts in the field of Sociology. The course studies the influence of culture on societal roles, the reasons for societal changes, and how groups affect an individual's behavior. The course covers the main theories of Herbert Spencer and Emile Durkheim. The course also includes how culture strongly influences our self-perception, beliefs and what we consider normal and abnormal. American and other cultures are studied.

### PSYCHOLOGY (KMC706)

This semester course is an overview of the various theories and concepts in the field of Psychology. The course studies the various aspects of behavior along with the theories of what causes certain actions. The course covers the main theories of Sigmund Freud, Erik Erikson, Abraham Maslow and Mary Ainsworth. The course covers the main concepts of personality formation, the nature vs. nurture debate, how self-images influence behavior, and how culture impacts psychology traits.

# RELIGION

Course Title	Grade Level	Required	Elective	Credit	Prerequisite(s)
<b>Salvation History</b> 7201 or 7202	9	X		.5	
<b>Christian Morality</b> 7351 or 7352	9	X		.5	
<b>New Testament</b> 7251 or 7252	10	X		.5	
<b>Prayer and Liturgy</b> 7301 or 7302	10	X		.5	
<b>Church History</b> 7401 or 7402	11	X		.5	
<b>Faith and Reason</b> 7551 or 7552	11	X		.5	
<b>Christian Vocations</b> 7501 or 7502	12	X		.5	• Indicate semester preference
<b>Catholic Social Teaching</b> 7451 or 7452	12	X		.5	• Indicate semester preference
<b>Logic/Philosophy</b> KMC116	11, 12		X	.5	• Concurrent enrollment with Newman University
<b>Stewards of Catholic Culture</b> CHS7016	11, 12		X	.5	

## COURSE DESCRIPTIONS: RELIGION

### SALVATION HISTORY (7201 OR 7202)

This course covers the history and religion of the Old Testament. The significance of covenants (within the Pentateuch) is reviewed. The growth and development of the Monarchy and its relationship with the Prophets is studied. The destruction and redevelopment of the Southern Kingdom is explained. The meaning and growth of Messianism is developed. The role of the Prophets and prophetism is developed. The Machabean Period, as an introduction to the New Testament and its influence on the society in which Christ lived, is studied. Some time is spent on the Wisdom Literature and the Psalms. There is a review of the geography of Palestine and the Holy Land. Built into the scripture course are practical applications of the curriculum, which attempt to implement Gospel values into adolescent life.

### CHRISTIAN MORALITY (7351 OR 7352)

This course presents the student with skills for good moral decision making in the light of Revelation and reason. Morality concerns what we do with our freedom and our sense of responsibility as we respond to God's call. The student will study the principles of moral law that the Lord left us, and how to apply said principles to present day situations as they grow up and face new challenges. Other present day moral issues and topics are considered and evaluated in the light of Christ's teaching.

### NEW TESTAMENT (7251 OR 7252)

This course covers the books within the Canon. The students are given a basic understanding of how the New Testament developed. The life and ministry of Christ is explained within the context of the living faith of the Church that nurtured the New Testament. A sample of the letters of the New Testament and the Book of Revelation are studied in order to bring out key Christological doctrines.

### PRAYER AND LITURGY (7301 OR 7302)

This course studies the various forms of prayer, liturgical expression and sacramental celebration of our Church. It also examines the necessary and essential elements of each. The course is intended to make the student more aware of the variety of pathways to holiness offered in the Church and encourage familiarity with the ways God and individuals

communicate with each other through symbols, rituals, and prayer. It also explores the meaning and rich tradition of the Church's liturgies and the role they play in the spiritual life in the Church as well as that of the individual.

### CHURCH HISTORY (7401 OR 7402)

This course covers the history of Christianity from the life of Christ up to the present day. From St. Peter to Pope Francis, the history of Christianity is presented in an objective manner. It is important for the students to have an understanding of the Church's history, because they are its heirs. To know who we are as Christians, we must know where we came from and have an appreciation for the great men and women of the Church who have gone before us.

### FAITH AND REASON (7551 OR 7552)

The Apologetics course is a rational, logical, and theological exposé of our Faith. The purpose of the course is to strengthen the individual's faith by discussing various aspects of Christian and non-Christian beliefs. By following this procedure, it is shown that many of our religious beliefs have a solid foundation in scripture, history, in the world of nature, and in our common everyday experiences. The course includes lectures, class discussions and participation, and the reading of various articles that will be handed out to the student. The course also looks at the faith issues that face our daily living in the 21st century.

### CHRISTIAN VOCATIONS (7501 OR 7502)

The purpose of this course is to examine the various ways in which God calls us to participate in His plan of redemption for the world. Each vocation considered is shown as a unique and valuable way to love others as Christ loved us. Special emphasis is placed on the vocation of marriage (covering the topics of dating, courtship, sexuality, engagement and family). The vocation to the priesthood and/or consecrated life is examined as well.

### CATHOLIC SOCIAL TEACHING (7451 OR 7452)

This course studies the major pronouncements of the Catholic Church regarding social issues and their practical applications in our contemporary society. The course is intended not only to make the students aware of the social doctrine of the Church but also to help them in a greater appreciation of love and justice for all classes within society as extolled by Jesus Christ.

### LOGIC/PHILOSOPHY (KMC116)

This semester course raises the fundamental questions of life. How does one account for existence, causes, being, essence, nature and the principles of change? How do we know such things? Ultimately the student discovers the meaning of life. Consideration is to be given to both contemporary and historical discussions of the great philosophical problems. Finally, this course introduces students to the logical methods and distinctions needed to address such questions. Must be junior or senior. Concurrent enrollment for college credit is available through Newman University.

### STEWARDS OF CATHOLIC CULTURE (CHS7016)

The course is designed for students who wish to develop their relationship with Jesus Christ and bring the good news of Jesus Christ to their school and society. The aim of this course is to assist students in developing their relationship with Jesus by giving them dedicated time during the school day to be with Him in prayer and to improve themselves through focus on growth in virtue. From this encounter, the course will assist students in becoming missionary disciples who will share their faith with their friends and family. The course will include Bible study, peer accountability group sharing, evangelization techniques, dedicated prayer time and practical "share your faith" assignments.



# WORLD LANGUAGE

Course Title	Grade Level	Required	Elective	Credit	Prerequisite(s)
<b>French I</b> KMC1311	9, 10, 11,12		X	1	
<b>Honors French I</b> KMC1312	9, 10, 11,12		X	1	<ul style="list-style-type: none"> <li>• "A" in previous foreign language instruction</li> <li>• Teacher recommendation</li> </ul>
<b>French II</b> KMC1313	10, 11,12		X	1	<ul style="list-style-type: none"> <li>• "C" or better grade in French I</li> </ul>
<b>Honors French II</b> KMC1314	10, 11,12		X	1	<ul style="list-style-type: none"> <li>• "B" or better grade in H French I</li> </ul>
<b>Honors French III</b> KMC1316	10, 11,12		X	1	<ul style="list-style-type: none"> <li>• "B" or better grade in H French II</li> </ul>
<b>AP French IV</b> KMC1317	11,12		X	1	<ul style="list-style-type: none"> <li>• "B" or better grade in French III</li> <li>• Concurrent enrollment with Friends University (requires 3.0 GPA and an "A" or "B" in first semester)</li> </ul>
<b>Spanish I</b> KMC1301	9, 10, 11,12		X	1	
<b>Honors Spanish I</b> KMC1330	9, 10, 11,12		X	1	<ul style="list-style-type: none"> <li>• "A" in previous foreign language instruction</li> <li>• Teacher recommendation</li> </ul>
<b>Spanish II</b> KMC1303	9, 10, 11,12		X	1	<ul style="list-style-type: none"> <li>• "C" or better grade in Spanish I</li> </ul>
<b>Honors Spanish II</b> KMC1332	9, 10, 11,12		X	1	<ul style="list-style-type: none"> <li>• Placement Test results</li> <li>• "B" or better grade in H Spanish I</li> </ul>
<b>Spanish III</b> KMC1304	10, 11,12		X	1	<ul style="list-style-type: none"> <li>• "C" or better grade in Spanish II or H Spanish II</li> </ul>
<b>Honors Spanish III</b> KMC1333	10, 11,12		X	1	<ul style="list-style-type: none"> <li>• "B" or better grade in Spanish II or H Spanish II</li> </ul>
<b>AP Spanish IV</b> KMC1334	11,12		X	1	<ul style="list-style-type: none"> <li>• "B" or better grade in H Spanish III and teacher recommendation</li> <li>• Concurrent enrollment with Newman University (requires 3.0 GPA)</li> </ul>
<b>AP Spanish V</b> KMC1335	11,12		X	1	<ul style="list-style-type: none"> <li>• "B" or better grade in AP Spanish IV and teacher recommendation</li> <li>• Concurrent enrollment with Newman University (requires 3.0 GPA)</li> </ul>
<b>H Latin I</b> KMC1341	9, 10, 11,12		X	1	
<b>H Latin II</b> KMC1342	10, 11,12		X	1	<ul style="list-style-type: none"> <li>• "B" or better grade in H Latin I</li> </ul>
<b>H Latin III</b> KMC1344	10, 11,12		X	1	<ul style="list-style-type: none"> <li>• "B" or better grade in H Latin II</li> </ul>
<b>H Latin IV/AP Latin</b> KMC1346	12		X	1	<ul style="list-style-type: none"> <li>• "B" or better in H Latin III</li> </ul>

# COURSE DESCRIPTIONS: WORLD LANGUAGE

## FRENCH

### FRENCH I (KMC1311)

This course is an introduction to the French language. It is designed to begin the development of communicative competency in the four skill areas of listening, speaking, reading, and writing at the novice level. It is also meant to foster cultural sensitivity by teaching students to respond in a respectful manner to the products, practices, and perspectives of French-speaking communities locally and throughout the world.

### HONORS FRENCH I (KMC1312)

This is a rigorous course for students at the novice-mid proficiency level in all four skill areas. A continuation of communicative competency in the four skill areas of listening, speaking, reading, and writing is emphasized. Developing cultural sensitivity related to the products, practices, and perspectives of French-speaking communities throughout the world remains a course requirement.

### FRENCH II (KMC1313)

This course expands on the skills already acquired in French I. Vocabulary building and grammatical concepts continue to develop at this level. Increasing proficiency in the four skill areas of listening, speaking, reading, and writing, as well as cultural sensitivity remain the focus of this course.

### HONORS FRENCH II (KMC1314)

This rigorous course is for students at the novice-high proficiency level in all four skill areas. Expanded vocabulary and further grammatical concepts are presented at this level. Increasing proficiency in the four skill areas of listening, speaking, reading, writing, as well as cultural sensitivity remain the focus of this course.

### HONORS FRENCH III (KMC1316)

This rigorous course expands on the skills already acquired in previous French courses and is for students at the intermediate-low proficiency level in all four skill areas. Mastery of advanced vocabulary and grammatical concepts, as well as increased fluency, comprehension, and cultural sensitivity remain the central focus of this course. *Prerequisite:*

### AP FRENCH IV (KMC1317)

The AP French Language and Culture course emphasizes communication (understanding and being understood by others) by applying the interpersonal, interpretive, and presentational modes of communication in real-life situations. This includes vocabulary usage, language control, communication strategies, and cultural awareness. The course engages students in an exploration of culture in both contemporary and historical contexts. Additionally, it develops students' awareness and appreciation of cultural products (e.g., tools, books, music, laws, conventions, institutions); practices (patterns of social interactions within a culture); and perspectives (values, attitudes, and assumptions). To best facilitate the study of language and culture, the course is taught almost exclusively in French.

## SPANISH

### SPANISH I (KMC1301)

This course is an introduction to the Spanish language. It is designed to begin the development of communicative competence in the four skill areas of listening, speaking, reading, and writing at the novice level. It is also meant to foster cultural sensitivity by teaching students to respond in a respectful manner to the products, practices, and perspectives of Spanish-speaking communities locally and throughout the world.

### HONORS SPANISH I (KMC1331)

This is a rigorous course for students at the novice-mid proficiency level in all four skill areas. A continuation of communicative competence in the four skill areas of listening, speaking, reading, and writing at the novel level is emphasized. Fostering cultural sensitivity by teaching students to respond in a respectful manner to the products, practices, and perspectives of Spanish-speaking communities locally and throughout the world remains a course requirement.

### SPANISH II (KMC1303)

This course expands on the skills already acquired in Spanish I. Vocabulary building and grammatical concepts continue to develop at this level. Increasing proficiency in the four skill areas of listening, speaking, reading, and writing, as well as cultural sensitivity, remain the focus of this course.

### HONORS SPANISH II (KMC1332)

This is a rigorous course for students at the novice-high proficiency level in all four skill areas. Expanded vocabulary and further grammatical concepts are presented at this level. An increase in proficiency in the four skill areas of listening, speaking, reading, writing, as well as cultural sensitivity, remain the focus of this course.

### SPANISH III (KMC1304)

This course expands on the skills already acquired in Spanish II. Vocabulary building and grammatical concepts continue to develop at this level. Increasing proficiency in the four skill areas of listening, speaking, reading, and writing, as well as cultural sensitivity, remain the focus of this course.

### HONORS SPANISH III (KMC1333)

This is a rigorous course for students at the intermediate-low proficiency level in all four skill areas. Advanced vocabulary and more complex grammatical concepts are presented at this level. An increase in proficiency in the four skill areas of listening, speaking, reading, writing, as well as cultural sensitivity, remain the focus of this course.

### AP SPANISH IV (KMC1334)

Advanced Placement Spanish Language and Culture is a rigorous, honors level course that emphasizes communication (understanding and being understood by others) by applying interpersonal, interpretive, and presentational skills in real-life situations. This includes vocabulary usage, language control, communication strategies, and cultural awareness. The course engages students in an exploration of culture in both contemporary and historical contexts. Additionally, it develops students' awareness and appreciation of cultural products (e.g., tools, books, music, laws, conventions, institutions); practices (patterns of social interactions within a culture); and perspectives (values, attitudes, and assumptions). To best facilitate the study of language and culture, the course is taught almost exclusively in Spanish. Newman credit is available upon completion.

### AP SPANISH V (KMC 1335)

Advanced Placement Spanish Literature and Culture is a very rigorous, honors level course that uses a thematic approach to introduce students to representative texts (short stories, novels, poetry, and essays) from Peninsular Spanish, Latin American, and United States Hispanic literature. Students develop proficiencies across the full range of communication modes (interpersonal, presentational, and interpretive), thereby honing their critical reading and analytical writing skills. Literature is examined within the context of its time and place, as students reflect on the many voices and cultures present in the required readings. The course also includes a strong focus on cultural connections and comparisons, including exploration of various media (e.g., art, film, articles, literary criticism). To best facilitate the study of literature and culture, the course is taught almost exclusively in Spanish. Newman University credit is available upon completion.

## **LATIN**

### HONORS LATIN I (KMC1341)

Honors Latin I is a year-long class which exposes students to the roots of our own English language and to the rich intellectual tradition of Western culture. Students will develop linguistic fluency not only by studying grammar and vocabulary but also by reading selections adapted from authors of the classical period through the Early Medieval Period. Students will also study classical mythology and aspects of Roman daily life.

### HONORS LATIN II (KMC1342)

Honors Latin II is a year-long class which allows students to develop a greater facility in the Latin language by reading selections adapted from Medieval, Renaissance and Early Modern authors, as well as completing their study of Latin grammar. Students will study classical mythology, aspects of Medieval through Early Modern daily life, as well as the influences of Latin on Western history. Students may enroll in Honors Latin II after completing Honors Latin I with a grade of "B" or better.

### HONORS LATIN III (KMC1344)

Honors Latin III is a year-long translation class which provides students with an in-depth experience of major Latin authors through the ages, with an emphasis on the classical authors Caesar, Catullus, Cicero, Vergil, Horace, Ovid and the Renaissance author Erasmus. Students may enroll in Honors Latin III after completing Honors Latin II with a grade of "B" or better.

### HONORS LATIN IV/AP LATIN (KMC1346)

Honors Latin IV/AP Latin is a year-long translation class which prepares students to read, understand, translate and analyze Latin poetry and prose in preparation for the National Latin Exam and for the AP Latin Exam. There will be an emphasis on Vergil's *Aeneid* and Caesar's *Gallic War*. Students may enroll in Honors Latin IV/AP Latin after completing Honors Latin III with a grade of "B" or better.

## **SAINT GIANNA CATHOLIC HEALTH ACADEMY**

The Saint Gianna Catholic Health Academy is available for juniors and seniors who express a strong desire to explore health care career opportunities. Students spend two block periods every day at the Via Christi Regional Medical Center, St. Francis Campus. This is an in-depth one-semester course in which the student will earn one-half (.5) credit of Science, one-half (.5) credit of Communication, one-half (.5) credit of Technology and one-half (.5) credit of Research.

This program will allow the student an in-depth exploration of health care opportunities while utilizing technology and communication skills. The class format includes guest speakers, an online medical terminology course, individual on-site learning plans, multimedia presentations and detailed career studies.

Students are required to complete an application and make an appointment with his/her counselor for an interview prior to acceptance into the health academy. Space is limited to twelve students per semester.

ST. GIANNA CATHOLIC HEALTH ACADEMY	Grade Level	Required	Elective	Credit	Prerequisite(s)
<b>SGCHA Technology</b> KMC005	12		X	.5	<ul style="list-style-type: none"><li>• Complete application</li><li>• Teacher/administrator approval</li></ul>
<b>SGHCA Communications</b> KMC006	12		X	.5	<ul style="list-style-type: none"><li>• Complete application</li><li>• Teacher/administrator approval</li></ul>
<b>SGHCA Science</b> KMC009	12		X	.5	<ul style="list-style-type: none"><li>• Complete application</li><li>• Teacher/administrator approval</li></ul>
<b>SGHCA Research</b> KMC010	12		X	.5	<ul style="list-style-type: none"><li>• Complete application</li><li>• Teacher/administrator approval</li></ul>

### HEALTH ACADEMY TECHNOLOGY (KMC005)

This course allows the student who has a strong desire to work in a health care profession the in-depth exploration of health career opportunities while utilizing health care technology skills. The class format includes career research and the development of a Service Learning Project (SLP). The SLP gives the student an opportunity to develop an audience appropriate service project using technology to instruct and/or persuade for the benefit of the community. Classes are held every day at the Via Christi Regional Medical Center, St. Francis campus.

### HEALTH ACADEMY COMMUNICATIONS (KMC006)

This course allows the student who has a strong desire to work in a health care profession the in-depth exploration of health career opportunities while utilizing health care communication skills. The class format includes two Newman University courses to either audit or take for college credit (tuition \$65.00 pch/audit \$25.00 pch) These include an online medical terminology course and an eight week career exploration course that features guest speakers weekly. The careers class meets weekly for eight weeks at the Newman University campus.

### HEALTH ACADEMY SCIENCE (KMC009)

This course allows the student who has a strong desire to work in a health care profession the in-depth exploration of health science as a profession. The class format includes a Health Science textbook featuring important aspects of healthcare systems from the medical office, ethical and legal considerations, and a full overview of four important categories of healthcare including diagnostics, therapeutics, support services, and information services. Included in this course are quizzes and exams over textbook readings as well as featured speakers. Classes are held every day at the Via Christi Regional Medical Center, St. Francis campus.

### HEALTH ACADEMY RESEARCH (KMC010)

This course allows the student who has a strong desire to work in a health care profession the in-depth exploration of health care by exposure to a variety of settings. Twice a week, students will go to different areas to shadow professionals at the St. Francis campus, East Harry campus and various other entities. Reflections of experience and specific logs are kept and included in a professional portfolio put together by the student. Student is required to purchase one pair of medical scrubs (approximately \$35.00). Classes are held every day at the Via Christi Regional Medical Center, St. Francis campus.

## WSU TECH



**Did you know that the average tuition cost for Kansas public technical and community colleges is at least \$2,665 per year and Kansas high school students now have the option to begin taking college technical courses and the tuition and fee cost is FREE OF CHARGE?**

A career technical education offers preparation for the high-demand jobs being created by advances in technology and global completion. Students spend two block periods every day at one of the WSU Tech's campuses. Students who are dually enrolled at KMC and WSU Tech are expected to fulfill both schedules, maintaining at least a 90% attendance rate at WSU Tech for full credit.

Students are required to complete an application for admission online (free of charge) at [www.wsutech.edu](http://www.wsutech.edu) and provide ACT scores or complete WSU Tech placement examinations with scores that meet WSU Tech admission guidelines. *The courses will be taken in a 3-hour block during the school day Monday – Friday, 8:00am - 11:00am or 12:00pm - 3:00pm.*

WSU Tech	Grade Level	Required	Elective	Credit	Prerequisite(s)
<b>Technical Core Course Block</b> CHS21001W	11, 12		X	2 (P/F)	<ul style="list-style-type: none"><li>• Complete application for admission</li><li>• Necessary placement examination</li><li>• Teacher/administrator approval</li></ul>

# FREE TUITION

HIGH SCHOOL JUNIORS & SENIORS RECEIVE FREE TUITION FOR ELIGIBLE COURSES

**Campuses:** NCAT | 4004 N Webb Rd  
City Center | 301 S Grove  
WSU South | 3821 E Harry

**High school students and parent contact:**  
Ashtyn Waltrip | 316.677.1853 | awaltrip@wsutech.edu  
Amy Andrews | 316.512.7474 | aandrews3@wsutech.edu  
General Questions: hsadmissions@wsutech.edu

2022-23 PROGRAM BLOCKS HAVE BEEN ARRANGED FOR STUDENTS WITH FLEXIBLE SCHOOL DAYS

## ALTERNATIVE FUEL MAINTENANCE & ADVANCED ELECTRONICS

Campus: City Center  
Time: 8:00am - 11:00 am (returning)  
OR 12:00 am - 3:00 pm (new)

## AUTO SERVICE

Campus: City Center  
Time: 8:00am - 11:00 am (returning)  
OR 12:00 am - 3:00 pm (new)

## AVIATION MAINTENANCE

FALL START ONLY  
Campus: NCAT  
Time: 8:00am - 11:00 am (returning)  
OR 12:00 pm - 3:00 pm (new)

## BUSINESS

Campus: ON-LINE

## CONSTRUCTION SCIENCE

FALL OR SPRING START  
Campus: City Center  
Time: 8:00 am - 11:00 am (new)  
OR 12:00 am - 3:00 pm (returning)

## CLIMATE & ENERGY CONTROL TECHNOLOGY (HVAC)

FALL START ONLY  
Campus: City Center  
Time: 8:00am - 11:00 am (returning)  
OR 12:00 pm - 3:00 pm (new)

## DRONES

Campus: NCAT  
Time: 8:00 am - 11:00 am

## EMT

Campus: WSU South  
Time: 8:00 am - 11:00 am  
OR 12:30 pm - 3:20 pm

## ENGINEERING DESIGN

FALL OR SPRING START  
Campus: NCAT  
Time: 8:00 am -11:00 am

## HEALTHCARE

Campus: WSU South  
Time: 12:00 pm - 3:00 pm

## INFORMATION TECHNOLOGY

Campus: WSU South  
Time: 8:00 am - 11:00 am  
OR 12:00 am - 3:00 pm

## INTERIOR DESIGN

Campus: WSU South  
Time: 8:00 am - 11:00 am  
OR 12:30 pm - 3:20 pm

## MACHINING

Campus: NCAT  
Time: 7:30 am -11:00 am  
OR 12:00 pm - 3:30 pm

## POLICE SCIENCE

Campus: WSU South  
Time: 12:00 pm - 3:00 pm

## WELDING

Campus: City Center  
Time: 8:00 am - 11:00 am  
OR 12:00 pm - 3:00 pm

~Placement test required to enroll



## CLASSES OFFERED AT DIFFERENT TIMES & LOCATIONS:

ACCOUNTING  
SUPPLY CHAIN  
PLUS MANY MORE!

CNA/CMA/HHA  
DIGITAL MARKETING

NURSING  
ARCH. DESIGN

# SR. KATHLEEN GILBERT, BVM TEACHER ACADEMY

Course Title	Grade Level	Required	Elective	Credit	Prerequisite(s)
<b>Parish Service</b> KMC672 Second Semester Only	11		X	.5	<ul style="list-style-type: none"> <li>• Parent/guardian signature</li> <li>• Indicate parish preference</li> <li>• Minimum 2.5 GPA</li> </ul>
<b>Learning Styles</b> 1501BC	12		X	.5	<ul style="list-style-type: none"> <li>• Parish Service</li> </ul>
<b>Intro to Teaching</b> 1502BC	12		X	.5	<ul style="list-style-type: none"> <li>• Parish Service</li> </ul>
<b>Field Experience</b> 1503BC	12		X	.5	<ul style="list-style-type: none"> <li>• Parish Service</li> </ul>
<b>Practicum II</b> 198BC	12		X	.5	<ul style="list-style-type: none"> <li>• Parish Service</li> </ul>

## PARISH SERVICE (KMC672)

Parish Service serves as an introduction to the Sr. Kathleen Gilbert, BVM Teaching Academy. **Students enrolling in Parish Service must be juniors with a minimum 2.5 GPA.** Parish Service students work with teachers in parishes with schools that send students to KMC. Course requirements include, but are not limited to, submitting a notebook of written Parish Service experiences and reflections to the KMC Parish Service oversight faculty member. College credit available with Newman University.

## LEARNING STYLES, INTRO TO TEACHING, FIELD EXPERIENCE AND PRACTICUM II

Students enrolled in the Sr. Kathleen Gilbert, BVM Teacher Academy will spend the majority of their class time in the field observing and assisting teachers and other faculty in school buildings. The students will have an introduction to the teaching profession in hopes of better discerning their call to education as a college major and career. In addition to time spent in classrooms, students will attend lectures periodically at Newman University and attend weekly classes at KMC. Students must successfully complete an online portfolio which contains a record of their experiences during the semester, and will be used as a foundation for their future education. Students accepted into the Teaching Academy must be able to provide their own transportation, be Virtus trained by the start of the school year, and have 3.0 GPA through their spring junior semester. College credit available through Newman University.

## PEER MENTORING

Course Title	Grade Level	Required	Elective	Credit	Prerequisite(s)
<b>Peer Mentoring</b> CHS22054	11, 12		X	.5	<ul style="list-style-type: none"> <li>• Application/interview process</li> <li>• Repeatable course</li> </ul>

## PEER MENTORING (CHS22054)

This course is designed for juniors or seniors who wish to assist underclassmen. Students in this course will accompany their assigned peer to one block per day to assist with academic and social goals. Examples of goals would include: organizational skills, assignment completion, and building relationships. Peer mentors will receive training and support throughout the semester from various faculty members.

## OFFICE AIDE

Course Title	Grade Level	Required	Elective	Credit	Prerequisite(s)
<b>Office Aide</b> KMC522	11, 12		X	.5	<ul style="list-style-type: none"> <li>• Administrator signature</li> <li>• Indicate semester preference</li> <li>• Minimum 2.5 GPA</li> </ul>

### COURSE DESCRIPTION: OFFICE AIDE

#### OFFICE AIDE (KMC522)

To be eligible, the student must be a junior or senior. In addition, he/she **must have a minimum 2.5 grade point average** and have met all requirements for graduation, or be in the process of meeting those requirements consistent with the student's current grade level. The student must be in good behavioral standing with the school, both in the past and at the present. The student is not permitted to enroll as both an Office Aide and a Teacher Aide during the same semester or take two blocks of Office Aide in the same semester. A maximum total of one credit can be earned as an "aide" while attending KMC. The student must have administrative approval. This is a pass/fail class.

## TEACHER AIDE & TUTORING

Course Title	Grade Level	Required	Elective	Credit	Prerequisite(s)
<b>Teacher Aide</b> KMC888	11, 12		X	.5	<ul style="list-style-type: none"> <li>• Minimum 2.5 GPA</li> <li>• Teacher approval</li> </ul>
<b>Tutoring</b> KMC1898	11, 12		X	.5	<ul style="list-style-type: none"> <li>• Minimum 2.5 GPA</li> <li>• Teacher/administrator recommendation</li> <li>• Interview</li> </ul>

### COURSE DESCRIPTION: TEACHER AIDE & TUTORING

#### TEACHER AIDE (KMC888)

To be eligible, the student must be a junior or senior. In addition, he/she **must have a minimum 2.5 GPA** and have met all requirements for graduation, or be in the process of meeting those requirements consistent with the student's current grade level. The student must be in good behavioral standing with the school, both in the past and at the present. The student is not permitted to enroll as both an Office Aide and a Teacher Aide during the same semester or take two blocks of Teacher Aide in the same semester. A maximum total of one credit can be earned as an "aide" while attended KMC. The student must have written teacher approval. However, teachers are limited to only two TAs per semester. All exceptions must be approved by the principal. This is a pass/fail class.

#### TUTORING (KMC1898)

This semester only class is associated with the Learning Strategies class. **A minimum of 2.5 GPA is required.** Tutors have the responsibility to check students' agendas for daily use, be role models for younger students, and tutor students in all areas of academics, especially science and math. Successful tutors have nurturing personalities and enjoy helping others with academic difficulties. Some class time will be available for tutors to do homework of their own. Tutors are hand selected based upon two criteria: interviews and teacher/administrator recommendation. Enrollment space is limited to five tutors per Learning Strategies class. Tutors receive one half credit and a letter grade. Tutoring may be taken multiple times for credit.

## SENIOR FREE HOUR

Course Title	Grade Level	Required	Elective	Credit	Prerequisite(s)
<b>Free Hour</b> KMC990 - Morning KMC991 - Afternoon First Semester	12		X	0	• Parent/guardian signature
<b>Free Hour</b> KMC992 - Morning KMC993 - Afternoon Second Semester	12		X	0	• Parent/guardian signature

### COURSE DESCRIPTION: SENIOR FREE HOUR

#### SENIOR FREE HOUR

1st Sem: (KMC990, KMC991) / 2nd Sem: (KMC992, KMC993)

This course is offered as zero credit to seniors only. The student must have met all requirements for graduation, or be in the process of meeting those requirements before scheduling a free hour. The student may have one free hour each day. All free hours must have parent/guardian written approval on file.



# Kapaun Mt. Carmel

CATHOLIC HIGH SCHOOL

8506 East Central  
Wichita, KS 67206

**Kapaun.org**

***Kapaun Mt. Carmel Catholic High School  
is dedicated to the education and formation  
of the total person in the image of Jesus Christ.***