

# PRINCIPAL'S MESSAGE

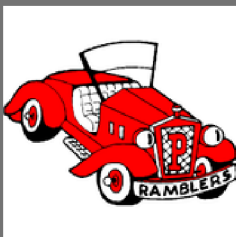


## Attendance Policy

There is a direct link between attendance and academic success. We encourage all students to work towards missing as little school as possible to reach their full potential. Absences fall into four main categories:

- **Absent**-do not have outside verification, but may be noted with a parent call.
- **Documented**-documented by an outside source-a doctor, therapist, school nurse, for example.
- **School-related Absence**-school-arranged activities, such as class field trips.
- **Suspension**-in-school or out-of-school suspensions due to a violation of the PPS Code of Conduct.

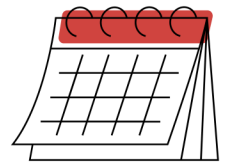
In the event of **any** absence, a parent or guardian is required to call the school at (517) 625-3101 to verify the reason for the absence. Attendance letters from the school will be sent home between 5 and 9 days of undocumented absences, and again between 10 and 14 days of undocumented absences. At the 10th undocumented absence, the school will schedule a meeting to create a plan to improve student attendance. At the 15th undocumented absence, the Shiawassee County Truancy Officer will be notified. This framework may be modified by the principal in cases of chronic illness. Please read the PES Student Handbook underneath Student Absences for additional information.



Enjoy your weekend!  
Mrs. Staib

## UPCOMING EVENTS

- Sept 1 & 4 - No School
- Sept. 18 - Board Meeting
- Sept. 21 - Half Day - 11:10 dismissal
- Sept 26 - 2nd Grade Field Trip
- Oct. 11 - No School



## PTO NEWS

We are excited to report that the PTO at the elementary school will be combining with the PTO at the middle school this year.

Please email:  
[perryelementarypto@gmail.com](mailto:perryelementarypto@gmail.com)  
to join their contact list regarding upcoming meetings and events. The PTO Board is presently made up of:

Heather Lairmore  
Nicole Rindlisbacher  
Lindsey Barnard  
Sara Heeg

## Car Loop Patience

The car loop is one area that tests our patience every morning! A few things to remember:

- No parking in the car loop between the poles. Please remain in your car and we will open the door on the right hand side to let your child out.
- Pull up all the way before stopping and letting your child out of the car.
- Have your child sitting on the right side of the vehicle or able to get out of the right side of the vehicle. This is for safety.
- **Resist passing on the left (this is the hard one)!** A few extra minutes of waiting is much safer than cars passing on the left.

We open the doors at 7:45 am every morning. Please keep your child with you in the morning until the doors open. Unfortunately, we don't have supervision in the front of the building. Unless you are walking up with your child, keep them in your car until 7:45 am. We stand outside until 7:55, tardy begins at 8:00. If you would like to avoid the congestion, time it so you are coming to the line at 7:50.

We have before school care options available if you need this prior to 7:45 am. Contact Michelle Klein, [kleinm@perry.k12.mi.us](mailto:kleinm@perry.k12.mi.us) for more information. If we all exercise a little bit of patience in the morning, the car loop will be a smooth and safe experience for all.



### REMINDER

- Please do not block the neighbors' driveways when picking up or dropping off your students.
- Call our attendance line at any time, (517) 625-3101, to excuse your student when absent.
- There is no school Friday, September 1st or Monday, September 4th.
- September 11th is picture day.



Visit Our  
**Spiritwear Store!**

