



Lebo Schools

Once A Wolf, Always a Wolf

August 2023

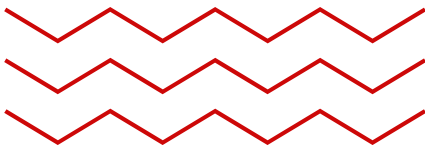
12 West 4th
P.O. Box 45
Lebo, KS. 66856

This institution is an equal Employment/Educational Opportunity provider. In accordance with Federal law and U.S. Department of Agriculture policy, this institution is prohibited from discriminating on the basis of race, color, national origin, sex, disability, or age in its programs and activities.

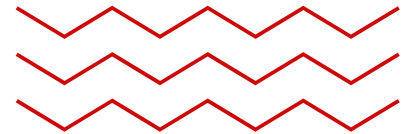
415 N. Ogden
P.O. Box 45
Lebo, KS. 66865

THE PRINCIPAL'S DESK

August 2023



Dr. Melissa Veatch



Hello Lebo!

School is just around the corner and I am excited to see the hallways flooded with students; learning, laughter, and excitement pouring out of classrooms! From the moment I stepped foot in the door, I could feel the pride that comes with being a WOLF...from the preschool to the high school, cafeteria to playground, daycare to the gym. I look forward to getting to know each of you and continuing the strong sense of community I have experienced in just a short period of time!

I was born in Attica, KS, and raised in Cherryvale, KS. My mom's family farmed in Burlington for over 100 years, and my dad's family settled in Emporia after my grandpa retired from the Air Force. Growing up, we spent our free time hunting, fishing, camping, and going to the lake. Both of my parents ran trucking companies, so needless to say, I have learned a thing or two about transportation and love the sound of a diesel engine.

I have a small family, but we are extremely close. My older brother retired from the Army and lives with his family in Alabama. My younger brother works for Ryder Trucks and owns a custom golf cart business. He lives in Olathe with his family. My husband's family is from Holcomb, KS, and live in Olathe, KS, and Montgomery, TX. Together we have 11 nieces and nephews. My in-laws live just down the road from us in Gardner and my parents live in Emporia.

I met my husband, Dave, when we were both teaching in Kansas City, Kansas, Public Schools; he is a true supporter and awesome 'girl dad!' Fishing is his hobby and therapy, all in one! Farm ponds are his favorite, but he's never met a river he didn't love. We spend our time outdoors, chasing our daughter Merritt to all her activities and loving our three doodles. Merritt is going into 4th grade and loves theatre, soccer, wrestling, basketball, art, and helping others. She is part of the children's choir at church and wants to be a SO many things when she grows up!

Merritt has been raised in schools! I've been an administrator and my husband a teacher, her whole life. I used to feel bad about weekly dinners of hotdogs and popcorn at ballgames but I actually think she looks forward to it! This next year will be hard for us as we live apart and transition to Lebo, but rest assured, they will not be strangers!

Family.



Me.



I am a family first person who believes in helping others, loving hard, and leaving the world better than I found it. I bake every Sunday and love entertaining with friends. I have a mild obsession with house plants and try to keep fresh flowers in my office; the natural beauty is calming to me! I have found joy in reading, as an adult, but didn't love it growing up. My favorite foods are watermelon, peaches, and spaghetti. I prefer to workout in the mornings and watching the sunrise puts me in a good mood! I sort Mike and Ike's before I eat them, love board games, and have a pretty extensive playlist!

Growing up, I was a powerlifter and played volleyball, basketball, and track. I was a member of FBLA, FFA, and the band. I can play multiple instruments, but I've always wanted to learn guitar! I was a district officer in FFA; it's where I learned to weld, shake hands with confidence, speak in public, and figure out what kind of bug was crawling around. I was class president and homecoming queen but really had to work at being self confident in high school; plus size clothes weren't as stylish as they are now! I spent a lot of time in the weight room because for me strong is beautiful!

I went to college to major in criminal justice and become a police officer. While working at a juvenile drug rehab, I had a life-changing encounter with a young person. I knew, from that moment, I had to find a career where I could mentor young people in a positive way; this is year 17 in education for me and **I am EXCITED TO BE A WOLF!**

SUMMER!

My summer adventure was taking a road trip with just my daughter! She has decided we need to take a ZOO TOUR around the United States and I'm ALL IN! We went to Memphis, Indianapolis, Cincinnati, and St. Louis; Indianapolis was voted our favorite because it was so hands-on, and the animals were all active! The highlight of the trip for me was meeting Fiona, the Hippo, in Cincinnati! Hippos as my favorite zoo animal! We also made it a point to eat at a Pizzeria in each city; we highly recommend Bazbeaux's Pizza in Indianapolis!

Although we spent over 27 hours in a car driving, we had so much fun! I LOVED my time with Merritt, distraction free and my face still hurts from all the laughter! She's a terrible navigator but a great DJ!



This summer was also spent trying to settle in to the community! Everyone has been extremely welcoming and my family is excited about our new adventure!



04.

NEWS.

THANK YOU to everyone who donated school supplies to the Baptist and Methodist Churches! We appreciate you!



SHOUT OUT to our crew who has been busy painting this summer! The building looks amazing! We also have a brand new floor in the cafeteria!

ENROLLMENT OPENS: Aug 1

FIRST DAY OF SCHOOL: Aug 17



Contractors have been hard at work on the playground. Thanks to the continuous efforts of our director Mitzi Carpenter and our successful daycare program, we were able to secure funds to purchase an outdoor classroom. The space will have coated outdoor tables, shade, and storage for learning materials and toys.

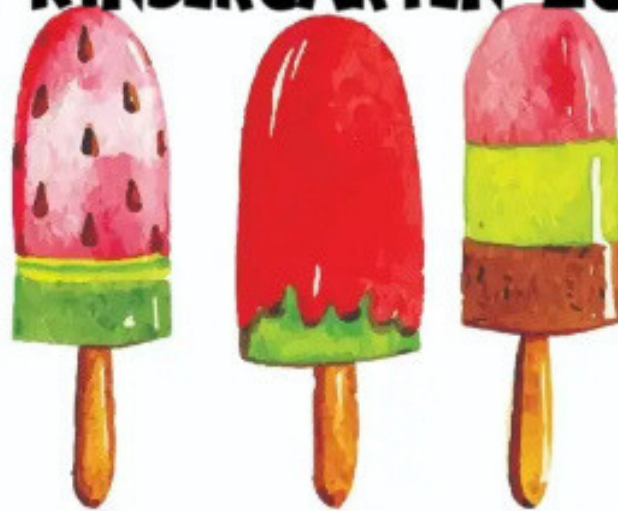
- • •
- • •
- • •
- • •
- • •
- • •
- • •
- • •
- • •
- • •
- • •
- • •



THANK YOU to Jeff with Yutzy Construction and Builders Choice Concrete for letting our kids climb up and explore the equipment!

It is never too early for career exploration!

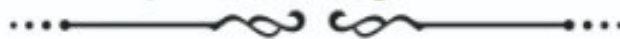
LEBO KINDERGARTEN 23-24



Join us for

**Popsicles on
the
Playground!**

Tuesday, August 8th



6:00-7:00 p.m.

**6:00-6:30- Popsicles & Pictures on the
LES Playground**

**6:30-7:00- Parent Meeting in the
Computer Lab (childcare in the Music
Room provided by the LHS
cheerleaders).**



LEBO ELEMENTARY SCHOOL

Preschool- 5th Grade



OPEN HOUSE

Tuesday, August 15th

6:00-7:00

Meet in the Small Gym at 6:00

- Meet the teachers
- Drop off supplies
- Visit the classroom
- Play with friends



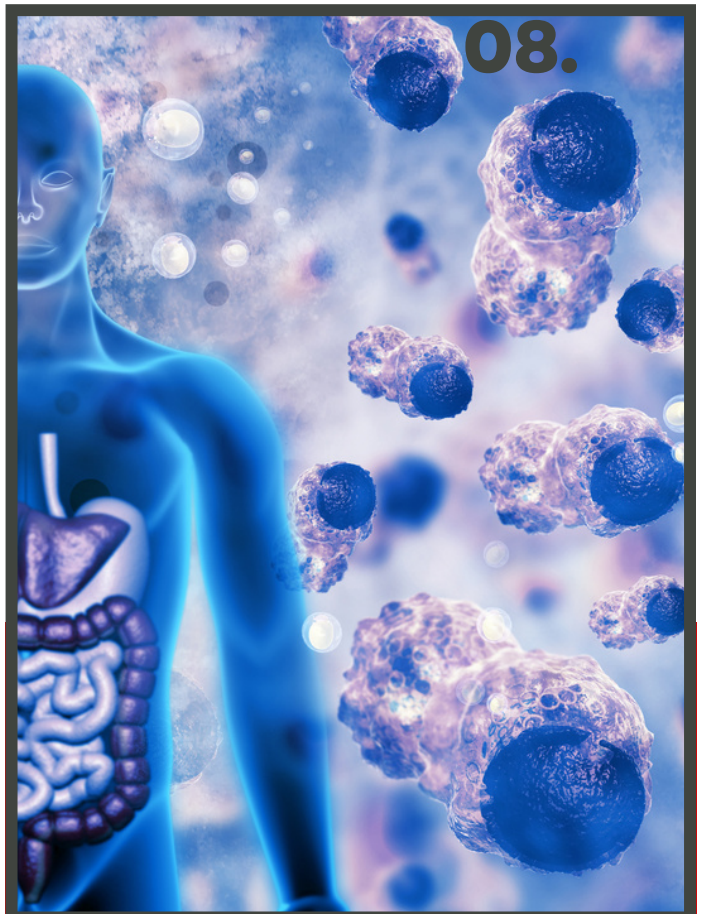
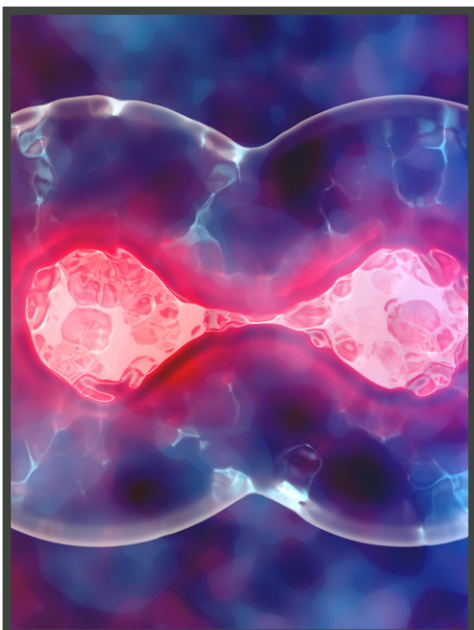
Stop by the playground and enjoy a treat from FREEDOM FREEZE!!

NEWS.

As a principal, my top priority, outside of ensuring a safe learning environment, is making sure all classrooms are equipped with highly qualified teachers!

- • • I have worked all summer to secure a certified biology teacher but have come up short. The teacher shortage is real, especially in math and science.

- • • The plan is to begin the school year with a long term substitute while I continue to work with universities to recruit a certified teacher.



While this is not ideal, having a person who is knowledgeable about the field and enthusiastic about working with kids is a strong positive.

The substitute I am currently working with has a Master's Degree in Health Services and spent 40 years in the medical profession as a respiratory therapist. During this time, they also taught classes at the technical level.

They are working with KSDE to secure licensure.

NEWS.

As a way to increase communication between home and school, we will be utilizing the Classroom feature within THRILLSHARE.

More information to come!



Please join us in welcoming our four new teachers:

Debra Rundas- PreSchool

Airyn Lochman- 2nd Grade

Melissa Herring- Music

Cristy Turner- Buisness

Tune into the September Newsletter to read fun facts about our new staff!

Get ready WOLVES! We have a new math curriculum for grades K-8! Reveal Math offers engaging math content and strategies for all learners! It even has homework help videos for parents! Teachers have been in training this summer and are ready to dig in!

Middle School will also be offering new courses this year including art, study skills, creative writing, communications, business, and criminology!



Lebo Junior High School Supply List 2023 - 2024

Endless supply of pens, pencils and notebook paper.

Grading Pens- Red, Green, Purple

One larger eraser or several pencil top erasers

Calculator – (Should be able to work fractions)

Texas Instruments is suggested

TI-30XS is the type the children use on State testing but most TI 30X

Models work just fine.

1 tub of disinfecting wipes

2 boxes of Kleenex

PE shoes for those not participating in sports

1" Three Ring Binder for Math and dividers.

1" & 2" Three Ring Binder for ELA and dividers

2" Three Ring Binder for History

1 spiral composition notebook for 6th-8th Science

Folders or Binder/Trapper Keeper for remaining classes (avoid 3 inch binders)

Colored Pencils & handheld sharpener

Headphones!!!! – We work on computers frequently that have sound with the programs. They need to be affordable and easily stored. Earbuds are preferred!!

3 Large Glue

Padlock for Sports lockers (

Scissors

Rulers & Protractors

Highlighters

Some boys lockers in the locker room have built in locks so check first)

Dry erase markers

Suggested-Foldable locker shelf

11.

High School Supply List:

Endless supply of pencils, pens and paper.

Math:

2" three ring binder

Calculators: 8th, 9th, 10th- TI-30-IIS

TI-84 graphing calculator is recommended for students in Alg. 2, Alg. 3 for advanced math classes.

Business: 1" binder

Boxes of kleenex and disinfectant wipes would be greatly appreciated.

Band/Choir: (Jr High & HS)

Instrument rental- \$50 due at enrollment

Clarinet or saxophone- 4 or more reeds

Trumpet, baritone, and tuba-piston valve oil

Trombone-slide oil

Horn players-rotary valve oil

Beginning drummers-pair of mallets and in January a pair of drumsticks

6-12 drummers-mallets & sticks

*Beginning band students each need the beginning band book, "Measures of Success."

All items can be purchased at a local music store or online.

LEBO ELEMENTARY PTO

THE PLACE TO GET
INVOLVED

Upcoming Meetings:
Sunday, August 6th @ 5:00 pm
Sunday, September 10th @ 5:00 pm



CALENDARS FOR 2023-2024

Thank you to Amber Barrett for working diligently once again to get our community calendars prepared and printed for the beginning of the school year! Our community greatly appreciate them! Please visit the sponsors that are spotlighted in the calendar and thank them. It is because of their generous donations that we are able to provide a community and school calendar to each family in Lebo schools. We will have extras for a donation for community members.

GET INVOLVED COME TO A MEETING

We meet the first Sunday every month at 5:00 pm in the commons area. - check the calendar and social media for updates, reminders and the agenda



Things that PTO has been able to provide the last year because of donations and involvement are:

Family Events
Kindness Awards/Leader of the Pack Awards
Teacher/Staff Gifts
5th grade promotion gifts
School and Teacher Needs



CAN'T MAKE IT TO A MEETING?

You don't have to come to a meeting to be involved! During the year there are plenty of ways to volunteer!

We will have sign ups for items needed, time slots for events that need sponsors and of course we would love your ideas as well!

Message us on Facebook or email
Amanda Hopkins.

bb.amanda.hopkins@gmail.com

EVENTS FOR 2023-2024

- ◆ Adult/Student Events
- ◆ Breakfast with Santa
- ◆ Testing Snacks
- ◆ Staff Appreciation Days
- ◆ Conference/Inservice Treats
- ◆ Potato Bar
- ◆ Kindness/Leader of the Pack Awards
- ◆ Fundraising
- ◆ 5th Grade Promotion
- ◆ Hometown Christmas
- ◆ Adult Nights
- ◆ T-Shirt Sales
- ◆ Pie Sales
- ◆ Football Toss
- ◆ School and Teacher Needs



GET IN TOUCH WITH US

LEBO ELEMENTARY PTO

STUDENT COUNCIL

Lebo High School



Elections

Wanting to run for student council?

Pick up your application from Mrs. Hopkins' classroom by Tuesday, August 22nd. All information must be completed and turned back into Mrs. Hopkins by Tuesday, August 29th. You can start promoting with your election materials (posters) once approved by Mrs. Hopkins. Your campaign presentation will be on Wednesday, September 6th, voting will be completed on Thursday, September 7th and the announcement of the campaign elections will be Friday, September 8th.

School Spirit

The student council will be spear heading school spirit and student involvement all year! We will plan themed game day activities and spirit wear. Once elections happen we will get the plan in place and the members will communicate with the students and community how to get involved!



First football game theme:
WEAR RED

Friday,
September 1st
@ Lyndon

Sponsored by:



We are thrilled to get this school year started and help guide the student council members to make decisions on how to improve school spirit, more student involvement and plan fun activities! The Mrs. Hopkins' are ready to provide support and encourage those interested in being a part of student council to run for elections! Happy 2023-2024 school year!



SCHOLASTIC

It's **BOOK FAIR** *time!*

Scholastic Book Fair for Grades PK - 8
 Lebo Branch Library Meeting Room
 September 18 & 20: 9 - 6
 September 19 & 21: 9-5
 GOAL: \$3501

COME TO THE FAIR
 CHOOSE BOOKS
 YOU LOVE

Check out with eWallet—the convenient, cash-free digital payment system.
 Every purchase at the Fair benefits our school! Woo hoo!

DOG MAN, CAT KID COMIC CLUB © Dav Pilkey.

Become a Member of Booster Club Follow us on Facebook or Instagram!

Our community support for our school is second to none. The booster club is a way to harness that support by promoting school spirit, attendance at events, and community interest in the students attending our school.

We have raised over \$80,000 for extra-curricular activities such as athletics, FFA, FCCLA, FBLA, Quiz Bowl, Forensics, and Student Council. Though sponsors, we provide a T-Shirt to promote school spirit to all students K-12 and staff each year.

Why are there membership fees?

Booster club members are an important part of the team that creates an opportunity to maintain or improve the supplies and facilities necessary for students to represent our community in athletics and activities. In order to provide monetary support for activities at our school, donations and fundraising are necessary. Your membership fee can make a difference in helping support student activities.

When does the booster club meet?

Booster club meetings are held on the third Wednesday of each month at 7:00 p.m. in the high school commons.

Is my membership or donation tax deductible?

The booster club is a 501 © 3 non-profit organization so your membership or donation will be tax deductible. (Minus the value of the gifts received for each level of membership).

- Basic Membership \$25 (\$2 in booster bucks)
- C Team Membership \$50 (\$4 in booster bucks)
- JV Membership \$100 (\$10 in booster bucks)
- Varsity Membership \$250 (One family season pass for all home games, and \$10 in booster bucks)

Name: _____
 Address: _____
 City, St, Zip: _____
 Email: _____
 Telephone: _____

Membership Type:
 Basic
 C Team
 JV
 Varsity

Would you willing to volunteer for a special event No Yes

Make checks payable to Lebo Jr/ Sr High Booster Club
 or You can also pay by PayPal at leboboosterclub@gmail.com

Leave membership information and fee in the high school office or mail to:
 Lebo Booster Club,
 Lebo High School
 PO Box 45
 Lebo, KS 66856



LEBO MIDDLE SCHOOL

Friday, August 18th

6:30 - 9:30 PM

LEBO COMMONS AREA

The Lebo Middle School cheerleaders will be hosting a Back to School dance on Friday, August 18th! All Lebo Middle Schoolers are invited!



Class of 2024-Senior Carnival

August 26th, 5:00 P.M. - 8:00 P.M.

Meal:

TBD

Homemade Ice Cream

Homemade Desserts

Games:

BINGO

Kids Games

Snow Cones

Cake Walk

Face Painting

The Jail

Come out for a fun family night and help support the Class of 2024!

Class of 2026:

Thank you to all those that helped make the annual pancake feed a success! Our community is amazing and we appreciate all the support you give us in everything we do. We know there is a lot of fundraisers and our community has always done such an incredible job supporting them all.

This school year our class will have raffles set up at our home volleyball games and basketball games! Make sure you check them out and test your luck.

Have a great school year!



National Honor Society Recruitment

Students who are eligible for selective membership into the Lebo High School National Honor Society are junior and senior students who have maintained a cumulative grade point average of 3.5 or above and have completed a minimum of 40 documented community service hours. All community service hours should be submitted to the high school office by January 1st to be considered for admission for the following school year. Each eligible student will be personally notified by email and given written instructions for applying. Students should begin working toward their minimum community service hours when they enter high school.

The Lebo High School Chapter of National Honor Society was chartered in the fall of 1987. The purpose of the organization is to honor excellence in scholastic achievement, service, character, and leadership of the students. A five-member council meets to review the applications and on individual ballots each member rates each applicant in the four areas listed above.



The selected students will be inducted into the Society at a special ceremony held in April.

School Fees 2023-2024

Approved 07/10/23

Book Fees	Pre-K (non-SPED)	\$30
	K-12	\$60
Instrument Rental-Annually		\$50.00
Breakfast	K-12	\$1.70
	Adult	\$2.50
Lunch	K-5	\$2.40
	6-12	\$2.55
	Adult	\$4.35
Extra Milk		\$.45
Driver's Ed Fee	In-District	\$200.00
	Out of District	\$350.00
Football/Volleyball Passes	Family	\$25.00
	Husband/Wife	\$20.00
	Single	\$10.00
Basketball Passes	Family	\$40.00
	Husband/Wife	\$30.00
	Single	\$20.00



AR Program

Mrs. Keith and Mrs. Lamer are in need of donations for the AR program. Last year, we instituted a prize drawing system. It was very successful. We are looking to continue with this system this year. Reading is an essential tool for life and success. We are looking for any donations of prizes or for prizes.



USD 243
Lebo-Waverly



Duane Ford
Superintendent

411 Pearson Ave
Waverly, KS 66871
785-733-2651
785-733-2707

Karen Piper
Board clerk

Jul 25, 2023

Subject: Important Information on Student Assurances Insurance Coverage for USD #243 Lebo/Waverly

Dear USD #243 Lebo/Waverly Families,

I hope this message finds you well. I am writing to provide you with important information regarding the Student Assurances Insurance coverage that is currently available to your children as part of our district's commitment to the well-being of all our students.

As you may already be aware, our school district carries Student Assurances Insurance to cover our student-athletes for injuries sustained while participating in any Kansas State High School Activities Association (KSHSAA) sanctioned activity. The purpose of this coverage is to protect your family from potential medical expenses that could result from unexpected injuries during these activities.

However, it's important to note that this coverage does not extend to non-sport related injuries that might occur during school hours, such as those that could take place during physical education classes, on the playground, or in other non-athletic school-related circumstances.

To help fill this gap in coverage, Student Assurance Services offers a voluntary plan that can provide coverage for your child for non-sport related injuries during school hours, or even 24/7, depending on the option you choose. The details of these voluntary plans are included in the attached flier for your convenience.

This coverage can supplement your existing health insurance plan by covering any deductible or out-of-pocket costs that your primary insurance may not cover. While this coverage is optional, I strongly recommend considering it. This extra coverage can provide peace of mind by ensuring that your child is fully covered for any injury that may occur at school, regardless of the context.

Please carefully review the attached flier and consider if the voluntary Student Assurance coverage might be a beneficial addition for your family.

If you have any questions or need further clarification on this matter, please don't hesitate to contact us. We are here to ensure that our families have all the necessary resources and information to make informed decisions about the health and safety of their children.

Thank you for your continued support and commitment to our school district.

Best Regards,

Duane Ford, Ed.S
Superintendent, USD #243 Lebo/Waverly School District



Student Injuries Can Happen

Offered to Families with Students - Grades PK-12

Approved By Your School/School District

What Is Student Accident Insurance?

- ◆ Coverage that provides financial assistance with your out-of-pocket medical expenses when your student sustains an accidental bodily injury.

Why Consider Student Accident Insurance For Your Student?

- ◆ High Deductible to your Family's Primary Health Insurance
- ◆ No Health Insurance for your Student
- ◆ Your Student is prone to injuries and you're looking for assistance with medical expenses in case he/she sustains an accidental injury

K-12 Accident Plans That Are Available Through Your School

- ◆ School-Time Coverage - \$14.00
(Covers student during school hours)
- ◆ Full-Time Coverage - \$89.00
(Covers student 24 hours a day/7 days a week)
- ◆ Extended Dental Accident Coverage - \$8.00
(Additional medical benefits towards dental treatment due to an accident)

Premium Paid Once a School Year

To Enroll Your Student & Review Medical Benefits

Go to: www.sas-mn.com

**or scan this QR code with
your smart phone to be
directed to our website**



Please locate "K-12 Students & Parents" on our homepage. Within this division, you will be able to search for your student's school district. Once located, you will have access to the following information:

- ◆ **Purchase Coverage**
(Managed Online or by Printing/Mailing Enrollment Form and premium)
- ◆ **Brochure**
(Explains medical benefits, exclusions and coverage options)
- ◆ **Claim Form**
(fillable form when enrolled student sustains injury)

**Accidents Can Happen and Medical Expenses are One of
the Biggest Financial Hardships for Families Every Year.**

For Questions, Call (800) 328-2739



Specializing in Student Accident Insurance Since 1971.

The above information is just a brief description of Student Assurance Service's student accident insurance. For more information including costs, benefits, effective dates, exclusions, limitations, please refer to www.sas-mn.com Students are able to purchase coverage only if his/her school district is a policyholder with the insurance company.

InHouse/Voluntary Non-Sports Online Form 2520



Los estudiantes pueden sufrir lesiones

Ofrecido a las familias con estudiantes de preescolar a 12.º grado

Aprobado por su escuela o distrito escolar

¿Qué es el seguro estudiantil contra accidentes?

- ◆ Es una cobertura que le proporciona asistencia financiera con sus gastos médicos de bolsillo si su estudiante sufre una lesión corporal accidental.

Tener un seguro estudiantil contra accidentes para su estudiante le resultaría conveniente si:

- ◆ El seguro de salud principal de su familia tiene un deducible alto
- ◆ Su estudiante no tiene un seguro de salud
- ◆ Su estudiante es propenso a sufrir lesiones y, si sufriera una lesión accidental, usted necesitaría ayuda con los gastos médicos

Planes contra accidentes disponibles a través de su escuela para estudiantes de preescolar a 12.º grado

- ◆ Cobertura de tiempo escolar: \$14.00 (cubre al estudiante durante el horario escolar)
- ◆ Cobertura de tiempo completo: \$89.00 (cubre al estudiante las 24 horas del día, los 7 días de la semana)
- ◆ Cobertura extendida contra accidentes de índole dental: \$8.00 (beneficios médicos adicionales para un tratamiento dental debido a un accidente)

La prima se paga una vez por año escolar

Para inscribir a su estudiante y revisar los beneficios médicos

Visite: www.sas-mn.com

o escanee este código QR con su teléfono inteligente para ir a nuestro sitio web



Busque "K-12 Students & Parents" (Padres y estudiantes de preescolar a 12.º grado) en nuestra página de inicio. Dentro de esta división, podrá buscar el distrito escolar de su estudiante. Una vez que lo encuentre, tendrá acceso a la siguiente información:

◆ Adquisición de cobertura

(Administrada en línea o mediante la impresión o el envío por correo del formulario de inscripción y la prima)

◆ Folleto

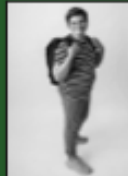
(Detalla los beneficios médicos, las exclusiones y las opciones de cobertura)

◆ Formulario de reclamación

(formulario que debe completarse cuando un estudiante sufre una lesión)

Los accidentes pueden ocurrir y los gastos médicos representan una de las mayores dificultades financieras para las familias cada año.

Si tiene preguntas, llame al (800) 328-2739.



Especialistas en seguros estudiantiles contra accidentes desde 1971.

La información anterior es solo una breve descripción del seguro estudiantil contra accidentes de Student Assurance Services. Para obtener más información, incluidos costos, beneficios, fechas de entrada en vigencia, exclusiones y limitaciones, visite www.sas-mn.com. Los estudiantes pueden adquirir la cobertura solo si su distrito escolar es titular de una póliza de la compañía de seguros.

InHouse/Voluntary Non-Sports Online Form 2520 Spanish

STUDENT ACCIDENT INSURANCE COVERAGE

POLICY GA-2200Ed.11-16(ID)(KS)(LA)(MN)(MT)(NC)(ND)(OH)(SD)

Premiums & Coverage Options

One Time Policy Year Premiums

School Time Coverage Grades PK-12 (Does NOT include Interscholastic Sports Coverage grades 7-12)* Protects the student while: a) attending regular school sessions, b) participating in or attending school-sponsored and supervised extracurricular activities, c) traveling directly to and from school for regular school sessions, and while traveling to and from school-sponsored and supervised extracurricular activities in school provided transportation. DOES NOT cover participation in interscholastic sports for students in grades 7-12. * Coverage does NOT include participation in interscholastic sports for grades 7-12 in Public Schools, and grades 9-12 in Parochial Schools.	\$14
Full Time Coverage Grades PK-12 (Does NOT include Interscholastic Sports Coverage grades 7-12)* Covers the student 24 hours a day until school starts next year. Includes coverage while at home and school, on weekends and during summer vacation. DOES NOT cover participation in interscholastic sports for students in grades 7-12. * Coverage does NOT include participation in interscholastic sports for grades 7-12 in Public Schools, and grades 9-12 in Parochial Schools.	\$89
Extended Dental Coverage Grades PK-12 Provides benefits up to a maximum of \$5,000 for any dental injury. Covers the student 24 hours a day until school starts next year. Treatment must begin within 60 days from the date of the Injury and must be performed within one year from the date of injury. However, if within the one year period following the date of Injury the student's attending dentist certifies that dental treatment and/or replacement must be deferred beyond one year, the policy pays the estimated cost of such deferred treatment, but not to exceed \$200 for each tooth. Benefits for prostheses are limited to \$500 per injury, including procedures performed to install them. Dental prostheses include, but are not limited to: crowns, dentures, bridges, and implants. Extended Dental does not cover treatment for orthodontics, dental disease, or expenses that exceed the dental prosthesis maximum benefit limit.	\$8

The Medical Benefits and Exclusions below apply to the Coverage Options listed above.

MEDICAL BENEFITS - When injury covered by the Policy results in treatment by a licensed physician within 60 days from the date of accident, the Company will pay the Usual and Customary Charges (U&C) incurred for covered services as listed below, for charges actually incurred within one year from the date of injury up to the specified Maximum Medical Benefit of \$50,000 per injury. (In MT, NC benefits are payable after the deductible is satisfied, the deductible is the amount paid or payable for the same injury by Other Valid Coverage)
 This policy will pay benefits regardless of Other Valid Coverage if the covered claim expense is less than \$200. If the covered claim expense exceeds \$200, benefits shall be paid first by Other Valid Coverage. (This coverage is excess in KS and primary in MT and NC after deductible, ID, IL)

All Amounts Listed Below are Per Injury

PHYSICIAN'S SERVICES

- a) **Surgical Care** (surgeon, assistant surgeon, and anesthesia).....80% U&C, up to \$1,500
- b) **Nonsurgical Care** (including physiotherapy performed other than in a hospital, 1 visit per day)U&C, up to \$50 per visit, maximum 6 visits

HOSPITAL CARE

- a) **Inpatient Care**
 - 1) **Hospital Semi-Private Room**U&C, up to \$500 per day
 - 2) **Hospital Miscellaneous**80% U&C, up to \$1,000
- b) **Outpatient Care**
 - 1) **Facility Charges for Day Surgery**.....U&C, up to \$1,000
 - 2) **Emergency Room**.....80% U&C, up to \$500

Note: Benefits for hospital miscellaneous and outpatient care charges are limited to services not scheduled under Medical Benefits.

- X-RAY SERVICES** (includes charges for reading)U&C, up to \$200
- DIAGNOSTIC IMAGING** (includes MRI, CT scan, bone scan and charges for reading)U&C, up to \$500
- DENTAL TREATMENT** (in lieu of all other medical benefits; for repair and/or replacement of each sound and natural)U&C, up to \$200 per tooth
(In SD, sound and natural is deleted)
- AMBULANCE SERVICES**U&C, up to \$500
- ORTHOPEDIC APPLIANCES** (when prescribed by a physician for healing)U&C, up to \$200
- PRESCRIPTION DRUGS** (take home).....U&C, up to \$100
- MOTOR VEHICLE INJURY**Same as any injury, up to \$1,000 (In KS, \$1,000 limit does not apply)

The policy contains a provision limiting coverage to the usual and customary charges. This limitation may result in additional out-of-pocket expenses for the insured.

ACCIDENTAL DEATH AND DISMEMBERMENT

When injury covered by this policy results in Accidental Death or Dismemberment within 180 days from the date of accident, the following benefits will be payable.
 Loss of Life.....\$2,000 Loss of an Eye.....\$2,000 Double Dismemberment\$10,000 Single Dismemberment.....\$2,000

The policy contains a provision limiting coverage to the usual and customary charges. This limitation may result in additional out-of-pocket expenses for the insured.

C-2520(2023)



ENROLLMENT ENVELOPE FOR STUDENT ACCIDENT INSURANCE

↑ STUDENT'S LAST NAME ↑ (one letter in each box)

--	--	--	--	--	--	--	--	--	--	--	--	--	--	--	--	--	--	--	--

STUDENT'S FIRST NAME M.I.

Please Print
 Address _____
(Street)

(City) (State) (Zip)

Email Address _____

Name of School _____

Name of District _____

Student's Age _____ Grade _____ Phone _____

X _____
(Signature of Parent or Guardian) (Date)

GAA-2203Ed.11-16

COVERAGE PLANS

One Time Policy Year Premiums

	Full Time Coverage	<input type="checkbox"/> \$89
	School Time Coverage	<input type="checkbox"/> \$14
	Extended Dental Coverage	<input type="checkbox"/> \$ 8

DO NOT SEND CASH TOTAL PREMIUM

Make Checks payable to: **STUDENT ASSURANCE SERVICES, INC.**
 *Please write student's name on the front of check. **NO REFUNDS**

DATE RECEIVED BY SCHOOL _____
(Must be dated by a school official)

C-2520(2023)

EXCLUSIONS (What the Plan DOES NOT Pay)

1. Any sickness, disease, infection (unless caused by an open cut or wound), including but not limited to: aggravation of a congenital condition, blisters, headaches, hernia of any kind, mental or physical infirmity, Osgood-Schlatter disease, osteochondritis, osteochondritis dissecans, osteomyelitis, spondylolysis, slipped femoral capital epiphysis, orthodontics.
2. Injuries for which benefits are paid under Workers' Compensation or Employer's Liability Laws. (In NC, benefits are excluded if the employee, employer, or carrier is responsible or liable according to final adjudication or settlement order under state law)
3. Any injury involving a two or three-wheeled motor vehicle or snowmobile or any motorized or engine driven vehicle not designed primarily for use on public streets and highways, unless the insured is participating in an activity sponsored by the Policyholder. (In ID, Insured must be participating as a professional)
4. Replacement of contact lenses, eyeglasses, hearing aids or prescriptions or examinations thereof.
5. The practice or play of interscholastic sports for grades 7-12 in Public Schools, and grades 9-12 in Parochial Schools, including travel to or from such practice or play.
6. In Kansas - No benefits are payable for accidental bodily injuries arising out of a motor vehicle accident to the extent such benefits are payable under any medical expense payment provision (by whatever terminology used including such benefits mandated by law) of any automobile policy.
7. In Ohio - Re-injury if the insured participated in a covered activity against medical advice.

IT IS NOT THE INTENT OF THE POLICY TO PROVIDE BENEFITS FOR AN EXISTING MEDICAL PROBLEM. A re-injury will not be covered if the insured has received treatment within a period of 180 days prior to the effective date of the policy. (In OH, this provision does not apply)

WHAT KIND OF INSURANCE IS THIS? This is accidental bodily injury insurance; it covers accidental bodily injury occurring while the coverage is in force. Medical illnesses such as ear infections or sore throats are not covered.

WHO SHOULD CONSIDER BUYING THIS INSURANCE?

1. All families with no other health coverage.
2. Families with other medical or dental coverage having deductibles, copays or coinsurance. Our policy applies benefits toward your other health coverage out-of-pocket expenses. (This coverage is primary in MT and NC after deductible, and in ID, IL)

HOW TO ENROLL

1. Select the desired coverage(s) from the options listed above. Premium cannot be prorated. There are two enrollment and payment options.
2. Complete the Enrollment Form and enclose the premium (check made payable to: STUDENT ASSURANCE SERVICES, INC. or credit card payment information). Please write the name of the student on the check. Return the premium payment with the requested enrollment information in an envelope and mail to: Student Assurance Services, Inc. P.O. Box 196, Stillwater, MN 55082-0196; OR
3. Complete enrollment form online at the Student Assurance Services, Inc. website www.sas-mn.com. The online form is available under the K-12 School Look-up.
4. Be sure to retain this brochure and a copy of the premium payment as proof of insurance. You will not receive a policy or ID card. The master policy is issued to the school.

EFFECTIVE AND EXPIRATION DATES

Coverage becomes effective the later of: the Master Policy Effective Date; or 12:01A.M. following the date the envelope containing the enrollment form and premium payment is postmarked by the U.S. Postal Service; or for online enrollment 12:01A.M. following the date the proper premium is received by the Plan Administrator. School-Time and Full-Time coverage expires on the first day of school next year.

HOW TO FILE A CLAIM

1. Notify the school and obtain a claim form immediately. The school will fill out Part A of the claim form if it's a school injury.
2. Parents complete Part B of the claim form. **Answer all questions.**
3. Submit copies of the student's itemized bills to the student's family medical and dental coverage first, even if there is a large deductible. The other insurance plan will send a report called an Explanation of Benefits (EOB). This plan is supplemental to all other valid coverage. The claim must be filed with the other coverage first! (Coverage is excess in KS, primary in MT and NC after deductible, and in ID, IL) This Plan **DOES NOT** cover penalties imposed for failure to use providers preferred or designated by the primary coverage. (In KS, penalty does not apply)
4. Send the completed claim form, copies of student's itemized bills and EOB to:
STUDENT ASSURANCE SERVICES, INC.
PO BOX 196 • STILLWATER, MN 55082
5. No claim can be completed until **all of the above documents** have been provided.

NOTE: Student must be treated by a Licensed Physician within 60 days of the date of the injury. Proof of claim should be submitted within 90 days from the date of accident, or a reasonable time thereafter not to exceed one year. Itemized bills should be submitted within 90 days from the date of treatment or reasonable time thereafter not to exceed one year. The policy is responsible only for expenses incurred within one year. (In NC, itemized bills must be submitted within 180 days from the date of treatment, not to exceed one year)

This provides a very brief description of some of the important features of the insurance policy. It is not the insurance policy and does not represent it. A full explanation of benefits, exceptions and limitations is contained in the Group Accident Insurance Policy Form GA-2200Ed.11-16 (and any state specific), and any applicable endorsement(s). This policy is considered term accident insurance (except in ID) and is non-renewable. This product may not be available in all states and is subject to individual state regulations. The Master Policy is issued to the School District/School. A copy of the Privacy Notice and Certificate of Coverage (where applicable) may be obtained on the website www.sas-mn.com.
C-2520(2023)

Administered by

STUDENT ASSURANCE SERVICES, INC.
PO Box 196 • Stillwater MN 55082-0196
Toll Free 800-328-2739 • (651) 439-7098
www.sas-mn.com



HAVE QUESTIONS?
CALL US TOLL FREE AT
(800) 328-2739 OR (651) 439-7098

Underwritten by

Ameritas
Ameritas Life Insurance Corp.
Lincoln, Nebraska

STUDENT ACCIDENT INSURANCE CREDIT CARD PAYMENT

INDICATE PREMIUM SELECTED AND COMPLETE THE REQUESTED ENROLLMENT INFORMATION FOUND ON THE REVERSE SIDE OF THIS FORM.
There is a \$5.00 Processing Fee added to ALL Credit Card Transactions (does not apply to IN, NC residents)

Please charge \$ _____ + \$5.00 Processing Fee = \$ _____ to the following credit card: VISA®, MasterCard®, or Discover®

Credit Card Number _____ Security Code (on back of card, 3 digits) _____ Card Expiration Date (Month) (Year) _____
Credit card billing will state: "Student Assurance Services, Inc."

Print Cardholder Name _____ Date ____ / ____ / ____

Cardholder Signature _____

Cardholder Address _____ (Street) _____ (City) _____ (State) _____ (Zip)

Telephone Number (_____) _____ - _____

GAA-2203Ed.11-16

DETACH - Place inside envelope

C-2520(2023)

This summer Lebo FCCLA had two district officers attend our National Leadership Conference in Denver, Colorado. Delia Simpson and Cira Plummer were able to attend workshops, plan for the upcoming school year, network and take in some of Denver. Morgan Vogts from Waverly FCCLA competed in a Fashion Construction STAR Event and earned Top 10 in the Nation with a gold!

We are starting the school year off with a shoe drive and will be collecting new and gently used shoes for the first month of school to send to impoverished countries. As you clean out your closets before school starts please keep us in mind for your new or gently used shoe donations. Donations can be dropped off at the school offices (Lebo Elementary and High School)

Thank you to a wonderful community for your continued support.



There will be a Senior Parent Meeting @ 6:30 p.m. in the commons with Mrs. Newton. More information will be forthcoming.

We are proud to announce that a salad bar is BACK!



August 2023

		1	2	3	4 Enrollment 8 a.m.- 4 p.m.	5
6	7	8	9	10	11 Inservice	12
13	14 Inservice	15 Inservice	16 Flex Day	17 1st day of school	18 JH back to school dance from 6:30 p.m.-9:30 p.m.	19
20	21	22	23	24 Senior Parent Meeting @ 6:30 p.m.	25 FB Jamboree @ 6 p.m.	26 Senior Carnival @ 5 p.m.
27	28	29 HS VB vs. Central Christian, Herrington @ Goessel @ 5 p.m.	30	31 XC @ John Redmond @ 5 p.m. JH FB/VB @ home vs. Burlingame @ 5 p.m.	1 HS FB @ Lyndon @ 7 p.m.	

August 2023 Lunch Menu

	1	2	3	4
7	8	9	10	11
14	15	16	17 B. Waffles L. Turkey Sand, Romaine/Tomato Chips, Baked Beans Cantaloupe	18 B. Long John/Yogurt L. Pizza Salad, Veggies/Dip Peaches, Rice Krispie
21 B. Choc. Chip Muffin L. Chef Salad PB & J Sand. Potato Salad Strwb./Bananas	22 B. Biscuit & Gravy L. Spaghetti Bread Stick, Salad Grapes	23 B. Pop Tarts L. Chicken Strips M. Potato/Gravy Roll, Corn, Apples	24 B. Br. Stick/Toast L. Hot Dog Baked Beans Pasta Salad, Peaches	25 B. Br. Pizza L. Chicken Fajita Ref. Beans Corn, Pineapple Long John
28 B. Coffee Cake L. Ham & Cheese Sand. Wedge Cuts Fresh Brocc./Caulif. Grapes	29 B. Saus./Bis./HB. L. Bread. Chick. Leg M. Potato/Gravy Gr. Beans/roll Watermelon	30 B. Pancakes L. Cheeseburger Romaine/Tomato Chips,Baked Beans Cantaloupe	31 B. Scr. Eggs/Toast L. Mac & Cheese Smokies, Peas Baby Carrots, Apples	1 B. Cinnamon Roll L. Frito Pie Corn Strwb./Bananas Cookie