



# August 2024



Sun	Mon	Tue	Wed	Thu	Fri	Sat
				1	2	3
4	5	6	7	8	9	10
11	12	13	14	15	16	17
18	19 <i>Teacher Inservice</i>	20 <i>Teacher Inservice</i>	21 <i>Teacher Inservice</i>	22	23	24
25	26 <i>First Day of School</i> 	27	28	29	30	31



# September 2024



Sun	Mon	Tue	Wed	Thu	Fri	Sat
1	2 <i>Labor Day NO SCHOOL</i>	3	4	5	6	7
8	9	10	11 <i>Pendleton Round Up 12:25 PM Dismissal</i>	12 <i>Pendleton Round Up 12:25 PM Dismissal</i>	13 <i>Pendleton Round Up NO SCHOOL</i>	14
15	16	17	18 <i>School Board Meeting 6:30 PM</i>	19	20	21
22	23	24	25	26	27	28
29	30					



# October 2024



Sun	Mon	Tue	Wed	Thu	Fri	Sat
		1	2	3	4	5
6	7	8	9 <i>School Board Meeting 6:30 PM</i>	10 <i>Community Feed &amp; Open House</i>	11 <i>Statewide Inservice</i>	12
13	14	15	16	17	18	19
20	21	22	23	24	25	26
27	28	29	30	31 		



# November 2024



Sun	Mon	Tue	Wed	Thu	Fri	Sat
					1 <i>End of 1st Quarter 12:25 PM Dismiss</i>	2
3	4	5	6 <i>Parent/Teacher Conference 3:30– 8:00 PM</i>	7 <i>Parent/Teacher Conferences 3:30 PM– 8:00 PM</i>	8 <i>Parent/Teacher Conferences 8:00 AM– 12:00 PM NO SCHOOL</i>	9
10	11 <i>Veteran's Day NO SCHOOL</i>	12	13 <i>School Board Meeting 6:30 PM</i>	14	15	16
17	18	19	20	21	22	23
24	25 <i>Thanksgiving Break NO SCHOOL</i>	26 <i>Thanksgiving Break NO SCHOOL</i>	27 <i>Thanksgiving Break NO SCHOOL</i>	28 <i>Thanksgiving NO SCHOOL</i>	29 <i>Thanksgiving Break NO SCHOOL</i>	30



# December 2024



Sun	Mon	Tue	Wed	Thu	Fri	Sat
1	2	3	4	5	6	7
8	9	10	11 <i>School Board Meeting 6:30 PM</i>	12	13	14
15	16	17 <i>Christmas Concert 7:00 PM</i>	18	19	20 <i>Teacher Inservice 12:25 PM Dismiss</i>	21
22	23 <i>Christmas Break</i>	24 <i>Christmas Break</i>	25 	26 <i>Christmas Break</i>	27 <i>Christmas Break</i>	28
29	30 <i>Christmas Break</i>	31 <i>Christmas Break</i>				



# January 2025



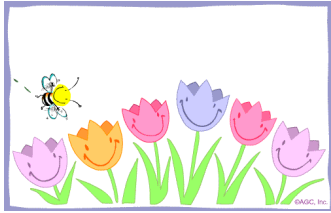
Sun	Mon	Tue	Wed	Thu	Fri	Sat
			1 <b>Happy New Year!</b>	2 <i>Christmas Break</i>	3 <i>Christmas Break</i>	4
5	6	7	8 <i>School Board Meeting 6:30 PM</i>	9	10	11
12	13	14	15	16	17 <i>End of 2nd Quarter 12:25 PM Dismiss</i>	18
19	20 <i>Martin Luther King Jr NO SCHOOL</i>	21	22	23	24	25
26	27	28	29	30	31	



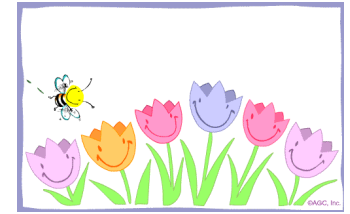
# February 2025



Sun	Mon	Tue	Wed	Thu	Fri	Sat
						1
2	3	4	5	6	7 <i>Teacher Inservice 12:25 pm Dismiss</i>	8
9	10	11	12 <i>School Board Meeting 6:30 PM</i>	13	14 <i>♥HAPPY Valentine's DAY♥</i>	15
16	17 <i>President's Day NO SCHOOL</i>	18	19	20	21	22
23	24	25	26	27	28	



# March 2025



Sun	Mon	Tue	Wed	Thu	Fri	Sat
						1
2	3	4	5	6	7	8
9 <i>Daylight Savings Begins</i>	10	11	12 <i>School Board Meeting 6:30 PM</i>	13	14	15
16	17	18	19	20	21 <i>End of 3rd Quarter 12:25 PM Dismiss</i>	22
23	24 <i>SPRING BREAK</i>	25 <i>SPRING BREAK</i>	26 <i>SPRING BREAK</i>	27 <i>SPRING BREAK</i>	28 <i>SPRING BREAK</i>	29
30	31					





# April 2025



Sun	Mon	Tue	Wed	Thu	Fri	Sat
		1	2 <i>Parent/Teacher Conferences 3:30—8:00 PM</i>	3 <i>Parent/Teacher Conferences 3:30– 8:00 PM</i>	4 <i>Parent/Teacher Conferences 8:00—12:00 PM NO SCHOOL</i>	5
6	7	8	9 <i>School Board Meeting 6:30 PM</i>	10	11	12
13	14	15	16	17	18	19
20 <i>Easter</i>	21	22	23	24	25	26
27	28	29	30			



# May 2025



Sun	Mon	Tue	Wed	Thu	Fri	Sat
				1	2	3
4	5	6	7	8 <i>Muffins for Moms</i> 7:45 am—8:30 am	9	10
11	12	13 <i>Spring Concert</i> 7:00 PM	14 <i>School Board Meeting</i> 6:30 PM	15 <i>Donuts for Dads</i> 7:45 am—8:30 am	16 <i>Last Day for Seniors</i>	17
18 <i>Baccalaureate</i> 6:30 PM	19	20 <i>Athletic/Academic</i> <i>Awards Banquet</i> 6:00 PM	21	22	23 <i>Kindergarten</i> <i>Graduation/Rose</i> <i>Ceremony</i>	24
25 <i>High School</i> <i>Graduation</i> 4:00 PM	26 <i>Memorial Day</i> NO SCHOOL	27	28	29	30	31



# June 2025



Sun	Mon	Tue	Wed	Thu	Fri	Sat
1	2	3 <i>Last Day for Students 12:25 PM Dismissal</i>	4 <i>Last Day for Teachers</i>	5	6	7
8	9	10	11 <i>School Board Meeting 6:30 PM</i>	12	13	14
15	16	17	18	19 <i>Juneteenth</i>	20	21
22	23	24	25	26	27	28
29	30					



# July 2025



Sun	Mon	Tue	Wed	Thu	Fri	Sat
		1	2	3	4 happy 4 <sup>th</sup> of JULY!	5
6	7	8	9 <i>School Board Meeting</i> 6:30 PM	10	11	12
13	14	15	16	17	18	19
20	21	22	23	24	25	26
27	28	29	30	31		