



# Middle School Golf Meeting

02/22/2024



# Coaches

## Coaches:

Mimi Bennett Head Coach

Morgan Miley Assistant Coach

Robb Odom Assistant Coach

Andrew Bennett Assistant Coach

Ben Shaw Volunteer

[Bennettm@wfpsb.org](mailto:Bennettm@wfpsb.org)

225-978-0719

ABOUT ME...



# Fee: \$65

- **Fee \$65 : Gets you a membership to the first tee**
- Membership to the first tee includes:
- \$1 range balls at all BREC courses for the 2024 year
- \$5 to play at any BREC course after 3:00pm
- SUMMER and FALL Sessions will only be \$5 per class
-

# First TEE Program Teaches

---

## Nine Core Values

---

---

### **Honesty**

the quality or state of being truthful; not deceptive

### **Integrity**

strict adherence to a standard of value;  
personal honesty and independence

### **Sportsmanship**

observing rules of play; winning or losing with grace

### **Respect**

to feel or show deferential regard for; esteem

### **Confidence**

reliance or trust; a feeling of self-assurance

### **Responsibility**

accounting for one's actions; dependable

### **Perseverance**

to persist in purpose or task despite obstacles

### **Courtesy**

considerate behavior toward others;  
a polite remark or gesture

### **Judgment**

the ability to make a decision or form an opinion;  
a decision reached after consideration

---

---

# About the First Tee

---



[ABOUT FIRST TEE \(YOUTUBE.COM\)](https://www.youtube.com/AboutFirstTee)

# This program is a feeder program into the high school golf team.

- You will have 3 instructors giving specific lessons about swing fundamentals, golf course etiquette and life skills.
- Practices will be held at Beaver Creek.
- Leaves right after school returns about 4:45.
- A bus will provide transportation to and from Beaver Creek.
- The bus will pick the students up at the middle school right after school.
- Golf Clubs can be brought to school and stored in the gym.



# Golf Practice

The middle school program will guarantee 8 sessions.

The schedule will be MONDAY, WEDNESDAY and THURSDAY the month of MARCH.

If there are no rain out days this will allow for 12 sessions.

If we do have rain we may only get 8 sessions in. If we need to go into the month of April to get the total of 8 sessions we will do that.



# Communication REMIND APP

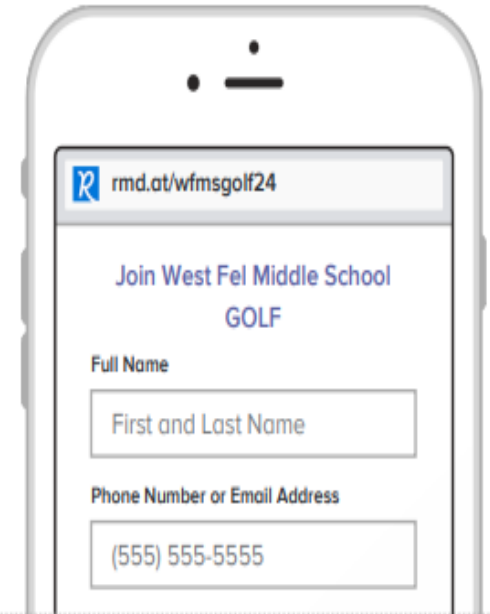
- 
- Only form of communication!
- I will send messages by 1:15 the day of practice if we have to cancel due to weather.
- I will call the school and make an announcement as well so the kids will know to ride the bus home.

**A** If you have a smartphone, get push notifications.

On your iPhone or Android phone, open your web browser and go to the following link:

[rmd.at/wfmsgolf24](http://rmd.at/wfmsgolf24)

Follow the instructions to sign up for Remind. You'll be prompted to download the mobile app.



The illustration shows a smartphone screen with the following content: a blue header bar with a 'R' logo and the URL 'rmd.at/wfmsgolf24'; a title 'Join West Fel Middle School GOLF'; a 'Full Name' label above a text input field containing 'First and Last Name'; a 'Phone Number or Email Address' label above a text input field containing '(555) 555-5555'.

**B** If you don't have a smartphone, get text notifications.

Text the message [@wfmsgolf24](https://www.whatsapp.com/chat?chat_id=81010) to the number **81010**.

If you're having trouble with **81010**, try texting [@wfmsgolf24](https://www.whatsapp.com/chat?chat_id=81010) to (774) 353-0907.

\* Standard text message rates apply.



The illustration shows a smartphone screen with a text message interface. The 'To' field contains the number '81010'. The 'Message' field contains the text '@wfmsgolf24'.



# EXPECTATIONS AT PRACTICE

---



SAFETY!



\*WE WILL HAVE ORGANIZED PRACTICES. I WANT IT TO BE FUN BUT IT MUST BE ORGANIZED TO BE SAFE.  
\*GOLF CLUBS ARE LIKE WEAPONS THEY CAN HURT YOU OR SOMEONE ELSE IF YOU ARE NOT CAREFUL AND CONSCIOUS OF YOUR SURROUNDINGS.

# EQUIPMENT

---

Must bring you own set of golf clubs.

---

Balls and ball marker

---

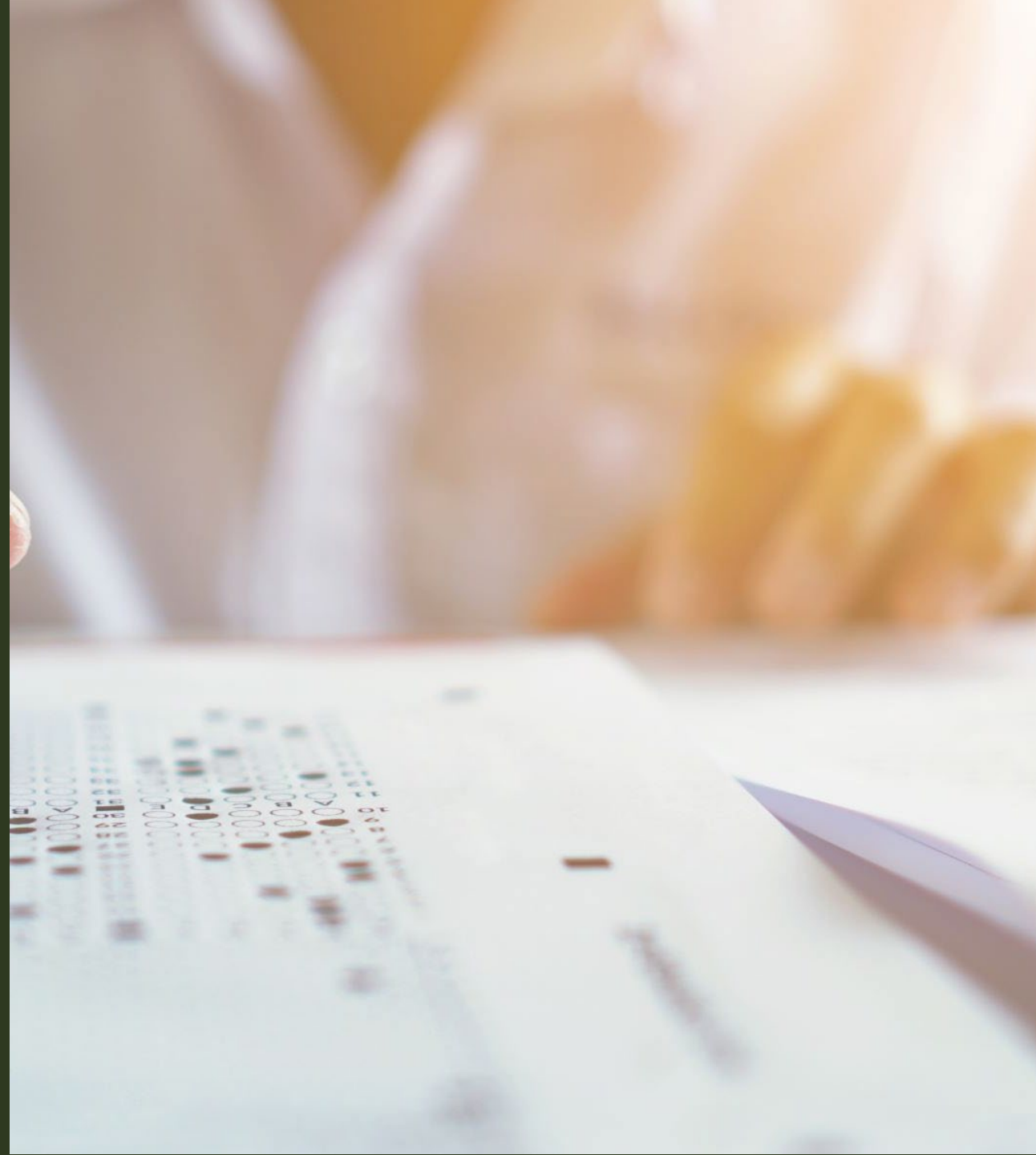
You do not have to have a full bag of 14 clubs but should have the essentials, driver, irons, putter etc...

---

Golf clubs can be expensive, so we will not share clubs.

# PAPERWORK

- DUE March 1<sup>st</sup> - TURN into Julie Morrow at the Middle School.
- Must have all paperwork turned in before you are allowed to come to the first session/practice.
- FORMS:
  - Physical
  - Assumption Risk
  - First Tee
  - Permission
  - Permission to transport via Bus





# Uniforms

- Must wear a shirt with a collar and no jeans
- I would like to purchase a t-shirt for the kids if possible but that is a “Maybe” depending on how many kids sign up and how much the shirts would cost.
- If you would like to purchase a half zip the cost is \$\_\_\_\_\_



# QUESTIONS?

SIDE NOTE: The weather is warming up. You may want to send your child with a water bottle or money to purchase drinks in the club house.





Please consider  
getting a team  
together!

---



The flyer features a background image of a golf course with a golf club and a golf ball. The text is primarily in blue and white, with some gold accents. The logo at the top right is a stylized 'W' and 'F' with a fleur-de-lis in the center. The title 'West Feliciana High ROYAL BLUE CLUB Spring Swing' is prominently displayed. Below the title, it says 'GOLF SCRAMBLE'. A small text box states that proceeds will go to the West Feliciana High School Athletic Department and special projects for ALL SPORTS. The date and location are clearly marked. The bottom section lists various sponsorship and registration details.

**W&F**  
West Feliciana High  
**ROYAL BLUE CLUB**  
*Spring Swing*  
GOLF SCRAMBLE

Proceeds from the tournament will go to  
the West Feliciana High School Athletic Department  
and special projects for ALL SPORTS

**Sunday, April 28, 2024**  
BEAVER CREEK GOLF CLUB  
1100 E Plains-Port Hudson Road | Zachary, LA 70791

Four Person Scramble	Registration at Noon
Individual Golfer \$100	Shotgun Start at 1:00 pm
Foursome \$400	Pastalaya Dinner and Silent Auction Starting at Noon
Sponsorships:	Prizes/Competitions: 1st & 2nd Place Teams Closest to the Hole Longest Drive many more!!!
Corporate Sponsorship \$500 Includes signage at club house plus a hole sign and four person team	
Hole Sponsor \$100 Includes signage at one specific hole	

For more information call Shelley Genre at 225.635.4561 or email at [genres@wfpsb.org](mailto:genres@wfpsb.org)