

# SPUR ISD PRE-K – 12TH BREAKFAST MENU

## MONDAY

## TUESDAY

## WEDNESDAY

## THURSDAY

## FRIDAY

5<sup>TH</sup> PANCAKES \*  
BACON  
OR  
MUFFIN  
YOGURT

6<sup>TH</sup> BREAKFAST\*  
TAQUITO  
OR  
BREAKFAST CRACKERS  
CHEESE STICK

7<sup>TH</sup> BREAKFAST PIZZA  
OR  
CEREAL \*  
TOAST

1<sup>ST</sup> PANCAKE WRAP \*  
YOGURT  
OR  
BREAKFAST BREAD  
YOGURT

2<sup>ND</sup> CINNAMON ROLL  
SAUSAGE  
OR  
CEREAL \*  
TOAST

12<sup>TH</sup> NO  
SCHOOL

13<sup>TH</sup> CHEESE OMELET  
WRAP  
OR  
BREAKFAST CRACKERS\*  
CHEESE STICK

14<sup>TH</sup> FRENCH TOAST  
SAUSAGE  
OR  
CEREAL  
TOAST

15<sup>TH</sup> BREAKFAST PIZZA\*  
OR  
BREAKFAST BREAD  
YOGURT

16<sup>TH</sup> CHICKEN-N –  
BISCUIT\*  
OR  
CEREAL  
TOAST

19<sup>TH</sup> PANCAKES  
BACON  
OR  
MUFFIN \*  
YOGURT

20<sup>TH</sup> BREAKFAST  
BURRITO  
HASH BROWN  
OR  
BREAKFAST CRACKERS\*  
CHEESE STICK

21<sup>ST</sup> WAFFLES \*  
SAUSAGE  
OR  
CEREAL  
TOAST

22<sup>ND</sup> STUFFED BAGEL  
OR  
BREAKFAST BREAD \*  
YOGURT

23<sup>RD</sup> DONUT HOLES  
SAUSAGE  
OR  
CEREAL\*  
TOAST

26<sup>TH</sup> BREAKFAST PIZZA  
OR  
MUFFIN \*  
YOGURT

27<sup>TH</sup> DUTCH WAFFLE  
SAUSAGE  
OR  
BREAKFAST CRACKERS\*  
CHEESE STICK

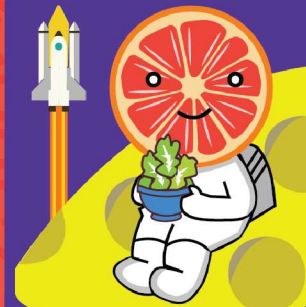
28<sup>TH</sup> SAUSAGE EGG\*  
AND CHEESE BISCUIT  
OR  
CEREAL  
TOAST

29<sup>TH</sup> PANCAKE WRAP \*  
YOGURT  
OR  
BREAKFAST BREAD  
YOGURT

# FEB

**MENU 2024**

## JOHNSON SPACE CENTER



### OFFERED DAILY

FRUIT , FRUIT JUICE,  
MILK VARIETY

\*\* WHITE MILK SERVED  
TO PRE-K

NO SCHOOL:  
FEB. 12<sup>TH</sup>

**BREAKFAST WITH  
YOUR VALENTINE  
FEB. 14TH**



Food and Nutrition Division  
National School Lunch Program



TEXAS DEPARTMENT OF AGRICULTURE  
**COMMISSIONER SID MILLER**

This product was funded by USDA.  
This institution is an equal opportunity provider.



Updated 2/1/2024  
[www.SquareMeals.org](http://www.SquareMeals.org)