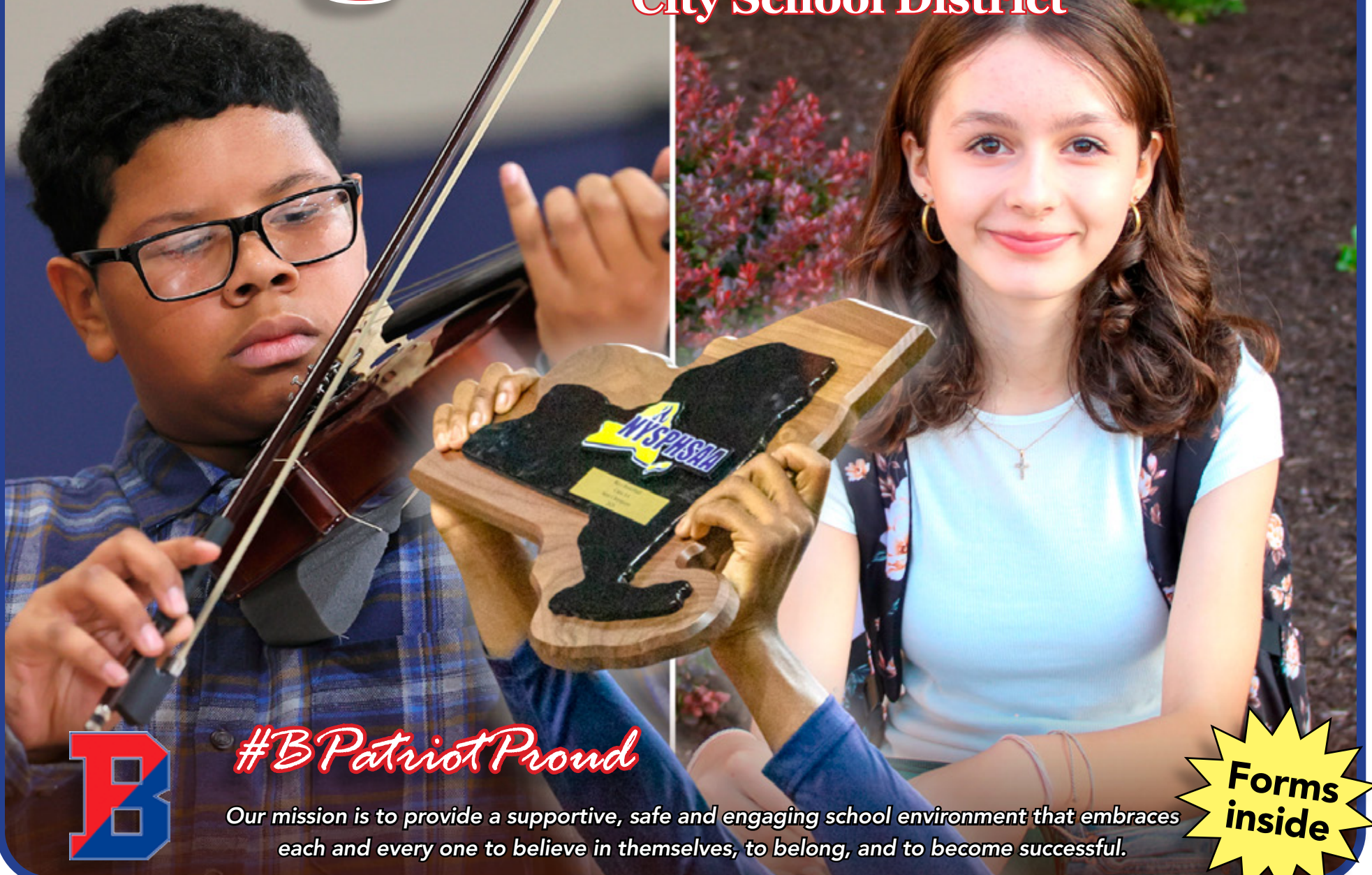


# Binghamton

City School District

2025 - 2026  
School Calendar



*#BPatriotProud*

Our mission is to provide a supportive, safe and engaging school environment that embraces each and every one to believe in themselves, to belong, and to become successful.

**Forms  
inside**

# Binghamton City School District

Believe • Belong • Become

## 2025-2026 School Calendar Binghamton City School District

Approvals: ACSA 12/8/2024; BT BOCES BOE 12/11/2024; for BCSD BOE on 1/28/2025

SCHOOL DAYS	
183	Student
3	Conference
186	Total

SEPTEMBER (19)+2						
S	M	T	W	T	F	S
	1	2	3	4	5	6
7	8	9	10	11	12	13
14	15	16	17	18	19	20
21	22	23	24	25	26	27
28	29	30				

Sept 1 Labor Day  
Sept 2-3 Supt's Conf Day

OCTOBER (22)						
S	M	T	W	T	F	S
			1	2	3	4
5	6	7	8	9	10	11
12	13	14	15	16	17	18
19	20	21	22	23	24	25
26	27	28	29	30	31	

Oct 9 Early Release Day  
Oct 13 Columbus Day/Indigenous Peoples Day

NOVEMBER (16)						
S	M	T	W	T	F	S
						1
2	3	4	5	6	7	8
9	10	11	12	13	14	15
16	17	18	19	20	21	22
23/30	24	25	26	27	28	29

Nov 4 Early Release Day  
Nov 11 Veterans' Day  
Nov 26-28 Thanksgiving Break

DECEMBER (15)						
S	M	T	W	T	F	S
	1	2	3	4	5	6
7	8	9	10	11	12	13
14	15	16	17	18	19	20
21	22	23	24	25	26	27
28	29	30	31			

Dec 11 & 16 Elem Only Parent/Teacher Conf  
Dec 22-Jan 2 Winter Recess

JANUARY (19)						
S	M	T	W	T	F	S
				1	2	3
4	5	6	7	8	9	10
11	12	13	14	15	16	17
18	19	20	21	22	23	24
25	26	27	28	29	30	31

Jan 19 Martin Luther King Day

FEBRUARY (18)						
S	M	T	W	T	F	S
1	2	3	4	5	6	7
8	9	10	11	12	13	14
15	16	17	18	19	20	21
22	23	24	25	26	27	28

Feb 16 President's Day  
Feb 17 Asian Lunar New Year

MARCH (20)+1						
S	M	T	W	T	F	S
1	2	3	4	5	6	7
8	9	10	11	12	13	14
15	16	17	18	19	20	21
22	23	24	25	26	27	28
29	30	31				

Mar 4 Early Release Day  
Mar 12 Supt's Conference Day  
Mar 13 Vacation Day  
Mar 25 Elem & MS Parent/Teacher Conf Day

APRIL (16)						
S	M	T	W	T	F	S
			1	2	3	4
5	6	7	8	9	10	11
12	13	14	15	16	17	18
19	20	21	22	23	24	25
26	27	28	29	30		

Apr 3-10 Spring Recess  
Apr 21-22 ELA Assessments (Gr 3-8)

MAY (19)						
S	M	T	W	T	F	S
					1	2
3	4	5	6	7	8	9
10	11	12	13	14	15	16
17	18	19	20	21	22	23
24/31	25	26	27	28	29	30

May 12-13 Math Assessments (Gr 3-8)  
May 19 Science Assessments (Gr 3-8)  
May 22-25 Memorial Weekend

JUNE (19)						
S	M	T	W	T	F	S
	1	2	3	4	5	6
7	8	9	10	11	12	13
14	15	16	17	18	19	20
21	22	23	24	25	26	27
28	29	30				

June 9-10; 17-26 Regents Exams  
June 19 Juneteenth  
June 26 Rating Day

LEGEND	
	Supt's Conference Days
	Regents Testing
	Emergency Release Day
	Observed Holidays
	Recess/School Not in Session
	Gr. 3-8 Assessments: ELA (4/21-22); Math (5/12-13); Science (5/19)
	Parent/Teacher Conf Days
	Early Release Days
	Board of Education Mtgs, 7PM

PRIORITY MAKE UP DAYS	
3/13, 5/22, 4/10	

Dear Binghamton Families,

The 2025-26 school year is set to begin and this calendar will help all students and their families prepare for returning to the classroom in September. Inside you'll find important dates like school breaks, holidays, early dismissals, superintendent's conference days, performances and more. Also included is important program & curriculum information, addresses & phone numbers for school buildings and departments, along with forms students may need to complete.

Attendance matters every single day. Research consistently shows that students who attend school regularly and arrive on time are more likely to succeed academically, build stronger relationships with peers and teachers, and develop the habits that lead to lifelong success. When students miss school or arrive late, they miss critical instruction, fall behind on assignments, and can struggle to catch up. Every day and every minute of learning counts toward your child's future.

In addition to this physical copy, the Binghamton City School District also maintains an online calendar on our website and mobile app. This digital resource is regularly updated with any changes that may occur and includes all our athletics contests and other exciting programs that pop up throughout the year. Please visit [www.binghamtonschools.org](http://www.binghamtonschools.org) and if you haven't already, download the BCSD app to keep up to date with everything happening throughout our schools!

This year's calendar is just one way to help students and families stay connected with everything going on in our schools and across the district. But we have plenty of other amazing resources as well; in addition to our website and mobile app, be sure to utilize the Parent Portal, SchoolTool, and don't forget to "like" and "follow" our social media pages! If family members ever have a question regarding their students or students' schools, they should first contact the school building directly - a list of contact information for each school is included in this calendar.

Family involvement goes a long way in student success; whether it's attending an event at school or helping at home with school work, participating in your student's academic journey has a tremendous impact. One of the most important ways you can support your child is by ensuring they are in school every day, on time and ready to learn. This simple but powerful act demonstrates to your child that education is a priority and sets them up for success both in the classroom and beyond.

I'm looking forward to seeing you at our schools and working alongside you to ensure that our students believe in themselves, feel that they belong, and become the best version of themselves. Together, with consistent attendance and your continued support, I know it will be another incredible year!

With Patriot Pride,

*Tonia*

Tonia Thompson, Ed. D.  
Superintendent of Schools



Visit  
[BinghamtonSchools.org](http://BinghamtonSchools.org)

# Directory

## Administration

164 Hawley Street • Binghamton, NY 13901

### Superintendent of Schools

Tonia Thompson, Ed.D. .... 607-762-8100 ext. 318

### Assistant to the Superintendent

Kyle Skinner .....607-762-8100 ext. 309

### Asst. Superintendent for Instruction & Budget

Jennifer Dove Ph.D. ....607-762-8100 ext. 306

### Executive Director for Human Resources & Operations

Eric Wilson ..... 607-762-8100 ext. 322

### Director of Personnel

Dawne Anna-Adams ..... 607-762-8100 ext. 224

### Director of Early Childhood - Gr. 12; Humanities; ENL

Shannon Walker .....607-762-8100 ext. 321

### Director of Early Childhood - Math, Science, Tech K-12

Scout Orr .....607-762-8100 ext. 308

### Asst. Director of Educational Technology & Innovation

Emily Dabek ..... 607-762-8100 ext. 328

### Administrator for Managed Technology Services

Alexandra Ackerman ..... 607-762-8100 ext. 222

### 98 Oak Street • Binghamton, NY 13905

### Attendance & Pupil Services

Margaret McGarry, Director .....607-762-8245

Student Registration .....607-762-6313

First Student Transportation .....607-723-7971

Working Papers (BHS, College & Career Center)..607-762-8327

### Director of Athletics, Physical Education & Health

Daniel Miller, Director .....607-762-8418

### Fine Arts

Ariana Koniuto, Director ..... 607-762-8230

### Special Education

Tia Rodriguez, Velvet Tanner, Directors ....607-762-8136

### Committee on Special Education

Chairpersons.....607-762-8136

### Committee on Pre-School Special Education

Chairperson .....607-762-8136

### 42 Chenango Street • Binghamton, NY 13901

### Adult GED & Out-of-School Youth

Oral Marriott .....607-763-4863

### Food Services

31 Main Street • Binghamton, NY 13905

Steve Klock, Director .....607-762-8120

## Benjamin Franklin Elementary School

262 Conklin Ave • Binghamton, NY 13903

Principal: Matthew Wood

Asst. Principal: Laura Ansbro

Office Secretary: Alycia Ferry .....607-762-8340

Health Office.....607-762-8345

Social Workers: Alex Craver, Jordan Williams,

Rebecca Spencer .....607-762-6062

Attendance: Tara Horton.....607-762-8340

PTA President: Katty Pena-White .....607-304-7334

UHS Clinic .....607-762-6012

## Calvin Coolidge Elementary School

261 Robinson Street • Binghamton, NY 13904

Principal: Kelly Bough

Office Secretary: Ann Wood .....607-762-8290

Health Office: Cecile Clark.....607-762-8290

Counselor: Peg Doherty.....607-762-8292

Attendance: Mariellen Scott .....607-762-8290

PTA President: Kelly Mars.....607-237-3022

Social Worker: Jessica Waffle .....607-762-8290

## Horace Mann Elementary School

30 College Street • Binghamton, NY 13905

Principal: Jacqueline Cash

Office Secretary: Maya Hendle .....607-762-8270

Health Office: Joanne Pandish .....607-762-8272

Counselor: Marissa Zdimal.....607-762-8271

Attendance: Bernadette Ogozaly .....607-762-8273

## MacArthur Elementary School

1123 Vestal Avenue • Binghamton, NY 13903

Principal: Paul Vesci

Asst. Principal: Nicole Vanderpool

Office Secretary: Joan Marean .....607-762-8119

Health Office: Kayla Vallese, Stacey Kopcho ..607-762-8355

Attendance: Haley Boniecki.....607-762-8119 ext. 2002

Social Worker: Deirdre Ballard.....607-760-8119 ext. 2011

Social Worker: Cristin Plourde .....607-762-6349

PTA President: Danielle Yurka

## Theodore Roosevelt Elementary School

9 Ogden Street • Binghamton, NY 13901

Principal: Nicole Kuehner

Asst. Principal: Kristy Sloma

Office Secretary: Kristen Walter.....607-762-8280

Health Office: Samantha Greeno .....607-762-8289

Social Worker: Katelyn Felter.....607-762-8286

Social Worker: Natalie Phelps .....607-762-8288

Attendance: TBD.....607-762-8280

PTA President: Keyshirah Sams .....607-762-8280

UHS Teddy Bear Clinic.....607-762-6012

## Thomas Jefferson Elementary School

151 Helen Street • Binghamton, NY 13905

Principal: Richelle Acquisto

Office Secretary: Jerusha Wirth .....607-763-8430

Health Office: Julie Foster .....607-763-8430

Social Worker: Amy Hudy .....607-763-8476

Attendance: Jamie Zang .....607-763-8430

PTA President: Sherry Clingeman, Audrey Miller..607-763-8430

## Woodrow Wilson Elementary School

289 Prospect Street • Binghamton, NY 13905

Principal: Alyssa Stolarczyk

Asst. Principal: Gerald Lynch

Office Secretary: Jaime McMurray .....607-763-8440

Health Office: Elizabeth Underwood .....607-763-8445

Psychologist: Christie O'Donnell.....607-763-8428

Attendance: Kim Clifford.....607-763-8440

Social Worker (Gr K-2): Tara Johnson.....607-763-8444

Social Worker (Gr 3-5): Brittany Hawkins..607-763-8475

PTA President: TBD .....607-763-8440

## East Middle School

167 East Frederick Street • Binghamton, NY 13904

Principal: Michael Holly

Asst. Principals: Michelle Raleigh, Alice Kiereck

Office Secretary: Senada Serifovski .....607-762-8300

Attendance .....607-762-8309

Counselors: Gina Smith, Karin Newton .....607-762-8230

Health Office: Demitra Zervos .....607-762-8117

## West Middle School

West Middle Avenue • Binghamton, NY 13905

Principal: Margarita Panko

Asst. Principals: Ronald Smith & Jessica Jordan

Attendance Secretary: Kaylie Salmi.....607-763-8400 (1)

Guidance Secretary: Ashley Gilroy.....607-763-8400

Office Secretary: Sue Gilroy .....607-763-8400 (4)

Counselors: Bobbi Jo Ocker, Allison Karderinis...607-763-8400 (3)

Health Office: Lindsay Smith.....607-763-8400 (2)

## Binghamton High School

31 Main St. • Binghamton, NY 13905

Principal: Kevin J. Richman

Associate Principals: Miriam Purdy, Paula Grassi

Asst. Principals: Eudes Clarke, Angela Panigrosso

Dean of Students: TBD .....607-762-8200

Office Secretary: Anna-Marie Conley.....607-762-8244

Health Office: Maeve Redzich .....607-762-8237

Attendance: Judy Ficarro .....607-762-8257

Guidance Counselors Office.....607-762-8211

# Board of Education

## Board of Education Members 2025-26

2029	Steve Seepersaud, <b>President</b>	seeperss@binghamtonschoo.org
2028	Carrie Button, <b>Vice Pres.</b>	buttonc@binghamtonschoo.org
2029	Mary Ann Callahan	callaham@binghamtonschoo.org
2026	Shaunté Middleton	middlets@binghamtonschoo.org
2026	Albert Penna	pennaa@binghamtonschoo.org
2030	Jesula Saintus	saintusj@binghamtonschoo.org
2027	Liza Turner	turnerl2@binghamtonschoo.org

**Clerk to the Board:** Sanya Brown, 164 Hawley Street, 13901  
(Phone: 762-8100 x319; Email: browns@binghamtonschoo.org)

The Board of Education, a branch of state government, is elected locally by the citizens of the City of Binghamton. Every school district has its own school board. Binghamton City School District has seven members whose primary responsibilities are to set local policy, levy property taxes to help meet the district budget and to hire a superintendent to run the schools in the district.

The agenda and materials for board meetings are available in BoardDocs from the district website (<https://go.boarddocs.com/ny/bing/Board.nsf>). Click to enter public site.

**Board of Education Business Meetings:** Under the Open Meetings Law, the public has the right to attend meetings of public bodies, listen to debate, and watch the decision-making process.

Board meetings are generally held the third Tuesday of every month starting at 7 p.m. at 164 Hawley Street, Binghamton, NY in the 3rd Floor Community Room, except where specifically noted in the schedule of regular board meetings included in this calendar and posted on the district's website. If you have questions, please contact the District Clerk for assistance. (Phone: 607-762-8100 x319 -- Email: browns@binghamtonschoo.org)

**Public Comment:** The Board welcomes members of the public to address them regarding school district business. At a Regular meeting, there are two opportunities available for public comment. Please refer to the public comment guidelines available in [BoardDocs](#).

## School Board Representatives

Although the Board of Education represents the entire district, individual members also act as **representatives** to each school. Board Members may visit their assigned school(s), and attend concerts, plays and other school-related activities as their schedules allow.

High School.....	Steve Seepersaud, Mary Ann Callahan, and Shaunté Middleton	Jefferson.....	Carrie Button, Shaunté Middleton
East Middle.....	Shaunté Middleton, Jesula Saintus	MacArthur.....	Albert Penna, Liza Turner
West Middle.....	Carrie Button, Shaunté Middleton	Mann.....	Carrie Button, Liza Turner
Coolidge.....	Steve Seepersaud	Roosevelt.....	Albert Penna, Liza Turner
Franklin.....	Mary Ann Callahan, Jesula Saintus	Wilson.....	Mary Ann Callahan

**Questions/Concerns - Who do I call?:** If parents, guardians, or the general public have questions or concerns, the Board asks that they follow the appropriate chain of command to address the issue at hand. If you are unsure who to contact, you can click the FAMILIES tab on the district's website ([www.binghamtonschoo.org](http://www.binghamtonschoo.org)) and then click the Questions? button.

**School Board Election/Budget Vote:** The school board election/budget vote is held annually on the third Tuesday in May. Board members typically serve a five-year term. Please refer to the important information on the district's website under the BOARD OF EDUCATION tab, Thinking of Becoming a School Board Member? to learn about the responsibilities and characteristics of a board member as well as the qualifications each candidate must meet.

**Voter Qualifications:** To vote in school elections, you must be (a) a registered voter; (b) a citizen of the United States; (c) 18 years of age or older; and (d) a resident of the Binghamton City School District for a period of 30 days preceding the vote.

### To register to vote:

- Complete the Broome County Board of Elections online voter registration form at the following link: <https://www.broomevotes.com/>
- Apply in person at the Broome County Board of Elections office, County Office Building, 44 Hawley St., Binghamton, NY between the hours of 8:30 a.m. – 4 p.m. For more information, call 607-778-2172.
- Complete the NYS DMV online voter registration form at the following link: <https://voterreg.dmv.ny.gov/MotorVoter/>

NOTE: You are eligible to vote if you were registered for the last preceding general election or you are registered under permanent personal registration.

**Absentee Ballots:** Any qualified voter who will be unable to vote in person on the day of the vote due to illness, physical disability, hospitalization, incarceration, or travel outside of the county/city of residence may apply for an Absentee Ballot. To apply by mail, print the Application for Absentee Ballot available at <https://bit.ly/48Vqx88>. The district will automatically mail an absentee ballot to each voter registered as permanently disabled with the Broome County Board of Elections.

### Early Mail ballot application

Any qualified voter may apply for an Early Mail Ballot. To apply by mail, print the Application for Early Mail Ballot available at <https://bit.ly/3vhCgA4>.

If you are unable to print the application for Absentee/Early Mail ballots, please call 607-762-8100 x319 and request one be mailed to you. You may also apply in person at 164 Hawley St., 3rd Floor, Binghamton between 8 a.m. - 4 p.m. on weekdays.

**\*Applications for Absentee/Early Mail ballots must be received by the District Clerk at least seven (7) days before the vote if the ballot is to be mailed, or the day before the vote if it is to be issued in person.**

**\*\*Absentee/Early Mail Ballots must be received by the District Clerk no later than 5 p.m. the date of the vote.**

# District Programs

## Accreditation

On February 22, 1988, the Binghamton City School District officially launched the quest for accreditation of all 10 of its schools, which included the entire kindergarten through twelfth grade program. Accreditation consists of meeting rigorous standards set by the Assembly of Elementary Schools and the Commission of Secondary Schools of the Middle States Association of Colleges and Schools. The district's accreditation is good through the 2030-31 school year.



## Educational Programs

### International Baccalaureate World School

**Coordinators: James Gill, 607-762-6143, Paula Grassi, 607-762-8212**

Binghamton High School is the third IB school in the world to pilot IBCP, and the first in New York State. This two-year course is open to all juniors and seniors who are aspiring to enter a career-related/ vocational field and advance on to a two/four-year college or university.

### International Baccalaureate Career-related Program (IBCP)

**Coordinators: James Gill, 607-762-6143, Paula Grassi, 607-762-8212**

Binghamton High School is the third IB school in the world to pilot IBCP. This two-year course is open to all juniors and seniors who are aspiring to enter a career-related/ vocational field and advance on to a two/four-year college or university.

## P-TECH

**Coordinator: Jacqueline Scallan 607-762-8216**

Pathways in Technology Early College High School (P-TECH) prepares students who may be first in the family to attend college, for a career pathway in one of a number of growing Technical areas. Students entering 9th grade who meet the admission criteria are selected to partner with the P-TECH program for six years. Students will earn their Regents Diploma, an Associate Degree from SUNY Broome in either Engineering Technology, Computer Technology or Health Studies and participate in ongoing mentoring from specially selected professionals working with the industry partner organizations all at no cost to the student. Fifty students from partner districts are selected for the program each year. P-TECH provides support to students for success through after-school tutoring, mentorship and demonstrating a real-world connection to college and career opportunities in the related fields.

## Project Lead the Way

**Coordinator: Jacqueline Scallan 607-762-8216**

Project Lead the Way pre-engineering program is a five-course sequence designed to help you explore technology and engineering related careers and to prepare you for two or four-year college programs. Students who meet certain academic standards are eligible to receive college credit from the Rochester Institute of Technology which may be transferred to other area colleges. In 2025, Project Lead The Way named Binghamton High School a PLTW Distinguished Program – national recognition that celebrates the high school's commitment to hands-on learning in science, technology, engineering, and math.

Each class uses state-of-the-art technology equipment and software and is taught in a laboratory setting that involves projects rather than lectures to learn the material. Classes focus on problem solving and encouraging students to work in teams allowing students to apply their math and science skills to real world problems. This project-oriented approach encourages problem solving skills in a team centered approach similar to what students will be doing when they go to work in industry. Students will have an opportunity to explore the broad field of engineering to help them make career decisions. It is better to find out in high school if this is an area of interest, rather than in college.

Students who complete this program will have a competitive advantage when they apply to college.

## Rod Serling School of Fine Arts

**Director of Fine Arts K-12: Ariana Koniuto 607-762-8230**

The Binghamton City School District was named among the Best Communities for Music Education by the National Association of Music Merchants, and the Rod Serling School of Fine Arts is one of the many facets of our Fine Arts program that led to that achievement. The Rod Serling School of Fine Arts at Binghamton High School, named for famed author Rod Serling, a '43 graduate of Binghamton Central High School, opened in 1995. Students can major in any of the following four areas: visual arts, music, theatre or dance with the opportunity to concentrate on individual interests. Since its inception, it has become a model for fine arts education within the state and the nation. More than 50 fine art courses are offered. There are no audition requirements or prerequisites for the foundation courses in any concentration. In addition, the school has more than 30 performing groups. These include the Serling Players, The Rod Serling Dance Company, Concert Band, Wind Ensemble, Jazz Band, Steel Drum Band, Concert Choir, Davidge Choir, Orchestra and Chamber Orchestra, among others.

## Challenge Program

**Coordinator: Emily Dabek 607-762-8100 ext. 328**

The Challenge Program is designed to provide students with rigorous opportunities to extend the classroom curriculum using conceptual themes, various media and project-based learning. Challenge teachers offer enrichment courses differentiated by interest in ELA and STEM areas. They draw on research-based instructional methods and programs that promote inquiry, critical thinking and complex literacy and math skills.

## Advanced Courses

Advanced courses are available to each and every one of our students beginning in middle school. Any student who is interested in taking advanced courses can contact the BHS Guidance Office at (607) 762-8211. All students can take advanced courses free of charge.

BCSD offers a variety of advanced courses that are geared toward putting your child on the path to the higher learning and career opportunities they wish to pursue.

- Enriched courses
- Advanced Placement (AP) courses
- International Baccalaureate (IB) courses
- Project Lead the Way (pre-engineering) courses
- SUNY Broome Fast Forward dual-enrollment courses
- Regent Algebra I (Middle School)
- Regents Earth Science (Middle School)
- Level 1 World Language (Middle School)

Taking advanced courses in middle and high school can have several benefits for students:

- They prepare students for college with higher expectations and rigorous coursework
- Students develop important skills like writing, research, advanced math, problem-solving, critical thinking, collaboration, teamwork, time management, and meeting deadlines
- Colleges look favorably on students who take advanced courses
- Students can earn college credits in high school, which can save time and money
- Advanced courses are weighted, which means they can boost Grade Point Averages

You can find all the details about our advanced courses in the Binghamton High School Curriculum Guide.



Scan here to view the BHS Curriculum Guide



**Nolan Schreiber - Gr 7 - EMS**

AUGUST 2025  
 S M T W T F S  
 1 2  
 3 4 5 6 7 8 9  
 10 11 12 13 14 15 16  
 17 18 19 20 21 22 23  
 24 25 26 27 28 29 30  
 31

# 2025

# September

OCTOBER 2025  
 S M T W T F S  
 1 2 3 4  
 5 6 7 8 9 10 11  
 12 13 14 15 16 17 18  
 19 20 21 22 23 24 25  
 26 27 28 29 30 31

Sunday	Monday	Tuesday	Wednesday	Thursday	Friday	Saturday
	1 <b>Labor Day No School</b>	2 <b>Superintendents' Conference Day No School</b>	3 <b>MacArthur Open House 4 p.m.  Superintendents' Conference Day No School</b>	4 <b>First Day of School... Welcome Back! *Kindergarten begins at 10 a.m.</b>	5	6 <b>ACT Test</b>
7	8	9	10	11 <b>Mann Curriculum Night 5:30 p.m.</b>	12	13 <b>SAT Test</b>
14	15 <b>EMS Curriculum Night 5 p.m. First Day of Hispanic Heritage Month</b>	16 <b>Franklin Curriculum Night 3:15 p.m.  Wilson Curriculum Night 5:30 p.m.  BOE Meeting 7 p.m.</b>	17	18 <b>WMS Curriculum Night 5:30 p.m.</b>	19	20
21	22 <b>Rosh Hashanah Begins at Sundown</b>	23 <b>Roosevelt Curriculum Night &amp; Welcome Back Carnival 3 p.m.</b>	24 <b>Jefferson Curriculum Night 5:30 p.m.</b>	25 <b>Coolidge Picture Day  Coolidge Curriculum Night 3 p.m.</b>	26	27
28	29	30 <b>First Installment of Property Taxes Due</b>			<p><b>Help your child start the year strong!</b></p> <ul style="list-style-type: none"> <li>• Set a consistent bedtime and morning routine</li> <li>• Prep clothes and backpacks the night before</li> <li>• Keep your child home only when truly sick</li> <li>• Schedule trips and appointments outside of school hours</li> <li>• Talk with school staff if your child feels anxious</li> <li>• Have a back-up plan for getting to school</li> </ul> <p><i>Small steps now lead to big success all year long!</i></p> 	



Jaxon Kleitz - Gr 3 - Franklin

SEPTEMBER 2025  
 S M T W T F S  
 1 2 3 4 5 6  
 7 8 9 10 11 12 13  
 14 15 16 17 18 19 20  
 21 22 23 24 25 26 27  
 28 29 30

# 2025 October

NOVEMBER 2025  
 S M T W T F S  
 1  
 2 3 4 5 6 7 8  
 9 10 11 12 13 14 15  
 16 17 18 19 20 21 22  
 23 24 25 26 27 28 29  
 30

Sunday	Monday	Tuesday	Wednesday	Thursday	Friday	Saturday	
<b>Attendance Fact</b> Did you know that missing just <b>one day of school every two weeks</b> adds up to <b>four full weeks</b> of missed learning each year? Over the course of a child's school career, that's almost <b>a year and a half</b> of school missed!			1  MacArthur Curriculum Night 5:30 p.m.  Yom Kippur Begins at Sundown	2  WMS Parent Technology Education Night 5:30 p.m.	3  Wilson Picture Day	4  SAT Test	
5	6  Sukkot Begins at Sundown	7	8	9  Emergency Release Day Schools Release 15 Minutes Early	10	11	
12	13  Columbus Day/ Indigenous People Day No School	<b>School Board Member Recognition Week</b>				17	18
		14  BHS Financial Aid Night Mann Picture Day  Simchat Torah Begins at Sundown	15  Binghamton College Day @ Visions Veterans Memorial Arena 11 a.m. - 2 p.m. & 6 - 8 p.m.	16  Mann Family Reading Night 5:30 p.m.	17  MacArthur Picture Day	18  ACT Test Practice SAT Exam	
19	20	21	22	23	24	25	
	Diwali	BOE Meeting 7 p.m.	Distinguished Graduates Dinner		WMS Trunk or Treat 5 p.m.		
26	27	28	29	30	31		
	Theodore Roosevelt's Birthday			All Elementary School's Trunk or Treat 5:30 p.m.	Halloween		



Jacey Roseburgh - Gr 3 - Mann

OCTOBER 2025  
 S M T W T F S  
 1 2 3 4  
 5 6 7 8 9 10 11  
 12 13 14 15 16 17 18  
 19 20 21 22 23 24 25  
 26 27 28 29 30 31

# 2025

# November

DECEMBER 2025  
 S M T W T F S  
 1 2 3 4 5 6  
 7 8 9 10 11 12 13  
 14 15 16 17 18 19 20  
 21 22 23 24 25 26 27  
 28 29 30 31

Sunday	Monday	Tuesday	Wednesday	Thursday	Friday	Saturday
<div style="border: 1px solid black; border-radius: 15px; padding: 10px; text-align: center;"> <p><b>Early Release Times for November 4</b></p> <p><b>All Elementary Schools - 10:50 a.m.</b>            (Lunch will be available)</p> </div>		<p><b>Attendance Fact</b></p> <p>Did you know that missing just <b>ten minutes of school per day</b> adds up to nearly <b>one and a half weeks</b> of missed learning each year? Over the course of a child's school career, that's <b>nearly half a year</b> of school missed!</p> 	<p><b>Snow Day Info</b></p> <p>For school closing information, check the BCSD website or download our mobile app.</p>		<p>1</p> <p>First Day of Native American Heritage Month</p>	
2	3	4	5	6	7	8
Daylight Savings Time Ends Set Clocks Back One Hour		<p>Early Release Day Elementary Schools Only</p> <p>Election Day</p>			<p>Franklin Family Movie Night 6 p.m.</p> <p>First Marking Period Ends (MS/HS)</p>	<p>SAT Test</p>
9	10	11	12	13	14	15
	<p>Second Marking Period Begins (MS/HS)</p>	<p>Veterans Day No School</p>		<p>Wilson Make Up Picture Day</p>	<p>Coolidge Make Up Picture Day</p>	
16	17	18	19	20	21	22
	<p>Report Cards Mailed Home/ Available via Parent Portal (MS/HS)</p> <p>MacArthur Make Up Picture Day</p>	<p>BOE Meeting 7 p.m.</p>	<p>Mann Make Up Picture Day</p> <p>Coolidge PTA Fall Festival 6 p.m.</p>	<p>Mann Family Math Night 5:30 p.m.</p>	<p>BHS Fall Play 7:30 p.m.</p>	<p>BHS Fall Play 7:30 p.m.</p>
23	24	25	26	27	28	29
<p>Thanksgiving Holiday - Schools Closed</p>						
30		<p>Second Installment of Property Taxes Due</p>		<p>Thanksgiving Day</p>		



**Juliano Saraceno - Gr 3 - Roosevelt**

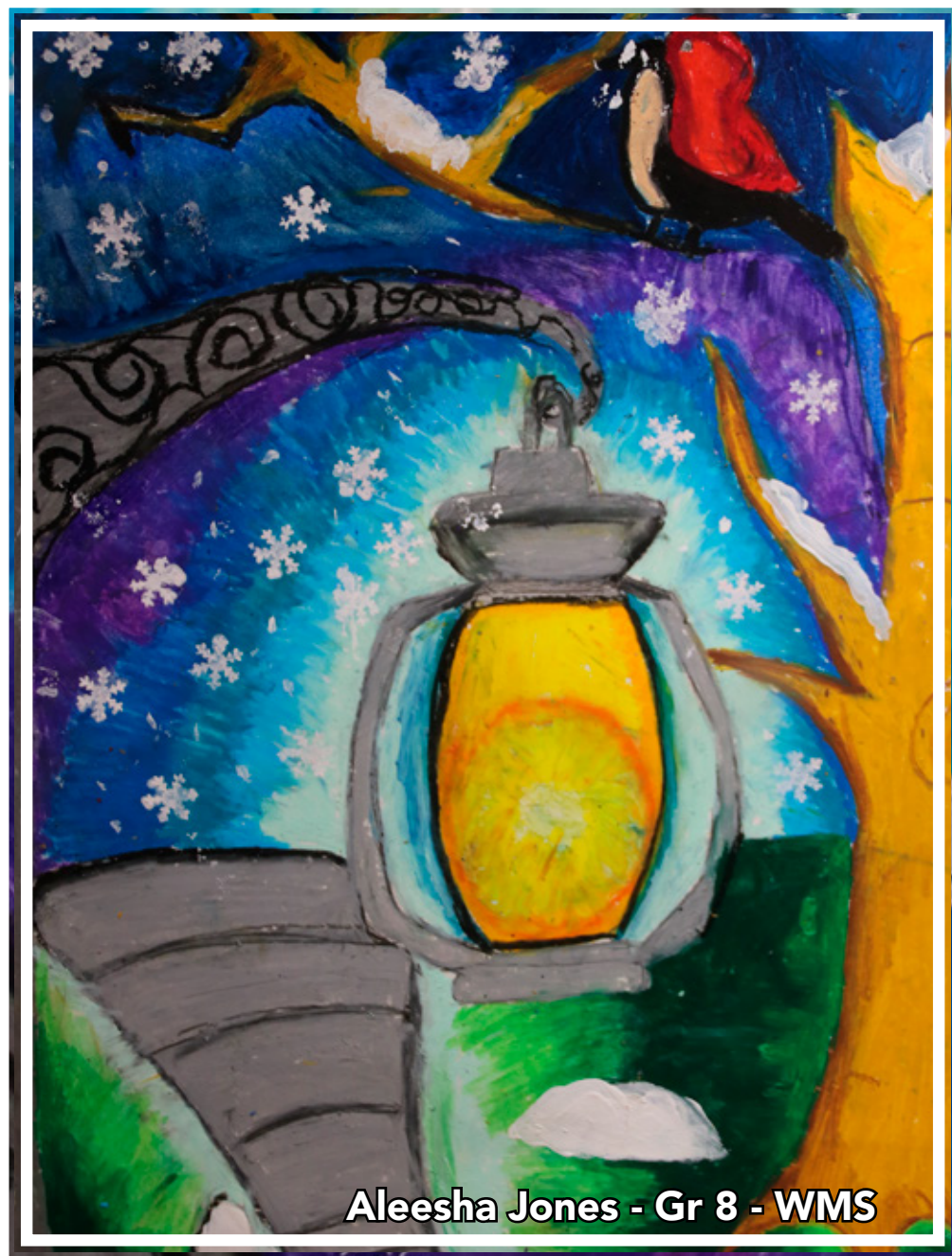
NOVEMBER 2025  
 S M T W T F S  
 1  
 2 3 4 5 6 7 8  
 9 10 11 12 13 14 15  
 16 17 18 19 20 21 22  
 23 24 25 26 27 28 29  
 30

# 2025

# December

JANUARY 2026  
 S M T W T F S  
 1 2 3  
 4 5 6 7 8 9 10  
 11 12 13 14 15 16 17  
 18 19 20 21 22 23 24  
 25 26 27 28 29 30 31

Sunday	Monday	Tuesday	Wednesday	Thursday	Friday	Saturday
<b>Snow Day Info</b> For school closing information, check the BCSD website or download our mobile app.	1	2	3	4	5 First Trimester Ends (Elem.)	6 SAT Test
7	8 Second Trimester Begins (Elem.) BHS Winter Orchestra Concert 7 p.m.	9 WMS Winter Concert 6:30 p.m.	10 Calvin Coolidge PTA Winter Wonderland 6 p.m.	11 Elementary Parent/Teacher Conference Day BHS Winter Vocal Concert 7 p.m.	12	13 ACT Test
14 Hanukkah Begins	15 MacArthur Winter Concert 6:30 p.m.	16 Elementary Parent/Teacher Conference Day BHS Winter Band Concert 7 p.m. BOE Meeting 7 p.m.	17 Mann Winter Concert 6:30 p.m. Coolidge Winter Concert 6:30 p.m.	18 Franklin Winter Holiday Celebration 5:30 p.m. EMS Winter Concert 6:30 p.m. Wilson Winter Concert 6:30 p.m.	19	20
21	22	23	24	25	26	27
<b>Winter Recess - Schools Closed</b>						
				Christmas Day	Kwanzaa Begins	
28 Woodrow Wilson's Birthday	29	30	31 New Year's Eve	<b>Attendance Fact</b> Did you know that missing <b>one day of school each week</b> adds up to <b>eight full weeks</b> of missed learning each year? Over the course of a child's school career, that's <b>over two and a half years</b> of school missed!		




**Aleesha Jones - Gr 8 - WMS**

DECEMBER 2025  
 S M T W T F S  
 1 2 3 4 5 6  
 7 8 9 10 11 12 13  
 14 15 16 17 18 19 20  
 21 22 23 24 25 26 27  
 28 29 30 31

# 2026

# January

FEBRUARY 2026  
 S M T W T F S  
 1 2 3 4 5 6 7  
 8 9 10 11 12 13 14  
 15 16 17 18 19 20 21  
 22 23 24 25 26 27 28

Sunday	Monday	Tuesday	Wednesday	Thursday	Friday	Saturday	
<b>Attendance Fact</b> Did you know that missing just <b>20 minutes of school per day</b> adds up to <b>over two and a half weeks</b> of missed learning each year? Over the course of a child's school career, that's <b>nearly one year</b> of school missed!			<b>Snow Day Info</b> For school closing information, check the BCSD website or download our mobile app.	1 <b>Winter Recess - Schools Closed</b> New Years Day	2 <b>Winter Recess - Schools Closed</b>	3	
4	5	6	7 Orthodox Christmas	8 WMS Holidays Around the World 5 p.m.	9	10	
11	12	13	14	15 Franklin Winter Concert 6 p.m. Isra and Mi'raj Begins at Sundown	16	17 Benjamin Franklin's Birthday	
18	19 Martin Luther King Jr. Day No School	<b>Winter Regents Exams</b>				23	24
25	26	27	28 Jefferson Winter Concert 5:30 p.m.	29 Mann Family Engagement Night 6 p.m.	30	31	
	MacArthur's Birthday	BOE Meeting 7 p.m.		EMS Musical 6:30 p.m.	Second Marking Period Ends (MS/HS)		



**Isabella Phan Johnston - Gr 3 - Coolidge**

JANUARY 2026  
 S M T W T F S  
 1 2 3  
 4 5 6 7 8 9 10  
 11 12 13 14 15 16 17  
 18 19 20 21 22 23 24  
 25 26 27 28 29 30 31

# 2026

# February

MARCH 2026  
 S M T W T F S  
 1 2 3 4 5 6 7  
 8 9 10 11 12 13 14  
 15 16 17 18 19 20 21  
 22 23 24 25 26 27 28  
 29 30 31

Sunday	Monday	Tuesday	Wednesday	Thursday	Friday	Saturday
1  First Day of Black History Month	2  Third Marking Period Begins (MS/HS)  Laylat al-Bara'at Begins at Sundown  Groundhog Day	3	4  Roosevelt Culture Night  Holi	5  Report Cards Mailed Home/ Available via Parent Portal (MS/HS)	6	7
8	9	10	11	12  Franklin Musical 6:30 p.m.  MacArthur PTA Someone Special Dance 5:30 p.m.  Abraham Lincoln's Birthday	13	14  ACT Test  Valentine's Day
15	16-17 <b>Mid-Term Recess - No School</b>  President's Day		18  Ash Wednesday	19  MacArthur PTA Neon Glow Dance 5:30 p.m.	20	21
22  George Washington's Birthday	23	24  BOE Meeting 7 p.m.	25  Calvin Coolidge Founder's Day Celebration - 6 p.m.  EMS Dance Show 6:30 p.m.	26  Mann Glow Dance 5:30 p.m.	27	28
						<b>Attendance Fact</b> Did you know that missing just <b>two days of school each week</b> adds up to <b>16 full weeks</b> of missed learning each year? Over the course of a child's school career, that's <b>over five years</b> of school missed!



Norah Hoyt - Gr 3 - Wilson



## CONNECT WITH THE DISTRICT THROUGH LET'S TALK!

The Binghamton City School District is dedicated to transparent and direct communication to and from our school community. **Let's Talk!** is a platform that allows you to connect directly with people in our district that have the information you're looking for. Whether you have a question, want to share some great news, or are looking to provide us with feedback, your Let's Talk submission will go directly to those who can help.

### How to use Let's Talk!

- Go to the district website homepage, [www.binghamtonschools.org](http://www.binghamtonschools.org)
- Look for the Let's Talk! button at the top of the webpage This will take you to the page where you will send your message.
- Select the topic you wish to send a message about.

Once you hit the message submission page, you will let us know the type of message you are sending (question, comment, suggestion, concern, compliment). After filling out your message, you can choose to send it with or without your contact information. If your contact information is not provided, the concern will be received but you may not be able to receive a detailed response.

When you submit a message about a specific topic, it goes directly to district staff.

You will receive a response to your message within two business day(s).



### In the event of an emergency or concern regarding community safety, please call 911.

We encourage you to contact the building principal with questions regarding a specific building concern.

If you would like to learn more about Let's Talk! or have any questions, please send an email to [pr@binghamtonschools.org](mailto:pr@binghamtonschools.org).



**Included are forms you may need to fill out and return to your child's school. The NYS Health Examination form is required for all students entering grades PreK, 1, 3, 5, 7, 9 and 11.**

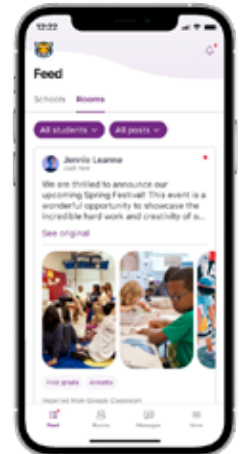
## INTRODUCING ROOMS TO THE BCSD SMARTPHONE APP



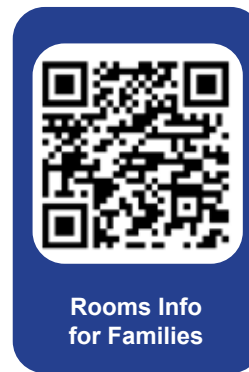
The Binghamton City School District has a brand-new tool to help families stay connected with what students are doing and learning in their class each day. We're proud to introduce Rooms – a new communication feature of the Binghamton City School District smartphone app.

This summer, the district transitioned from Remind to Rooms as the platform for communication between families and teachers. Rooms offers a streamlined and secure way to stay connected with your child's classroom, school updates, and district announcements—all in one place.

In addition to secure, two-way messaging between families and the classroom teacher, teachers can share class assignments, reminders, or materials that you need to know. Rooms includes built-in safety and moderation tools that help ensure all communication stays safe and secure.



For more information on how to download the Binghamton City School District app and to learn more about how to set up and use Rooms. Scan the QR Codes below.



Rooms Info for Families



Binghamton App for iPhone



Binghamton App for Google Play Store



## MENU OF PROGRAMS/INITIATIVES

The Rock on Café™ School Nutrition Program in Broome and Tioga Counties are proud to offer kid approved menu items and entrees that taste great and are healthy too! The focus of the Rock on Café™ program is to offer healthier versions of foods that children like while being affordable and convenient.

### BREAKFAST AND LUNCH

- Rockin' Breakfast and Lunch options are available through the Rock on Café™ and meet USDA Meal Regulations:
  - Age-Appropriate Meals
  - Protein
  - Whole Grains
  - Variety of Fruits and Vegetables
  - Fat-Free or 1% Milk

Check out school menus and nutrition information online through the My School Menus App or at [www.myschoolmenus.com](http://www.myschoolmenus.com)



PRE-PAY ONLINE with EZSchoolPay.com  
*Deposit money directly into your student's account online!*



### EMPLOYMENT

- Come join our team! Check out openings on your school districts website.

[www.rockoncafe.org](http://www.rockoncafe.org)



### FARM TO SCHOOL

- Taste Tests
- Local Food Procurement
- Partnering with School Gardens and Growing Towers
- Community Partnerships

### NUTRITION EDUCATION

- Cooking Workshops with Students and Staff
- Food and Nutrition Presentations

### CATERING

- Special Events
- Teacher/Staff Breakfasts and Lunches



FIND US ON:





## 2025-26 School Year New York State Immunization Requirements for School Entrance/Attendance<sup>1</sup>

**NOTES:**

All children must be age-appropriately immunized to attend school in New York State. The number of doses depends on the schedule recommended by the Advisory Committee on Immunization Practices (ACIP). Intervals between doses of vaccine must be in accordance with the “[ACIP-Recommended Child and Adolescent Immunization Schedule](#).” Doses received before the minimum age or intervals shown on the schedule are not valid and do not count toward the number of doses listed below. See footnotes for specific information for each vaccine. Children who are enrolling in gradeless classes must meet the immunization requirements of the grades for which they are age equivalent.

**Dose requirements MUST be read with the footnotes of this schedule**

Vaccines	Pre-Kindergarten (Day Care, Head Start, Nursery or Pre-K)	Kindergarten and Grades 1, 2, 3, 4 and 5	Grades 6, 7, 8, 9, 10 and 11	Grade 12
Diphtheria and Tetanus toxoid-containing vaccine and Pertussis vaccine (DTaP/DTpP/Tdap/Td) <sup>2</sup>	4 doses	5 doses or 4 doses if the 4th dose was received at 4 years or older and the series was started at less than 1 year of age or 3 doses if 7 years or older and the series was started at 1 year or older	3 doses	
Tetanus and Diphtheria toxoid-containing vaccine and Pertussis vaccine adolescent booster (Tdap) <sup>3</sup>		Not applicable		1 dose given after age 10 years
Polio vaccine (IPV/OPV) <sup>4</sup>	3 doses		4 doses or 3 doses if the 3rd dose was received at 4 years or older	
Measles, Mumps and Rubella vaccine (MMR) <sup>5</sup>	1 dose		2 doses	
Hepatitis B vaccine <sup>6</sup>	3 doses	or 2 doses of adult hepatitis B vaccine (Recombivax) for children who received the doses at least 4 months apart and between the ages of 11 years through 15 years	3 doses	
Varicella (Chickenpox) vaccine <sup>7</sup>	1 dose		2 doses	
Meningococcal conjugate vaccine (MenACWY) <sup>8</sup>		Not applicable		Grades 7, 8, 9, 10 and 11: 1 dose  Grade 12: 2 doses or 1 dose if the dose was received at 16 years or older
Haemophilus influenzae type b conjugate vaccine (Hib) <sup>9</sup>	1 to 4 doses			Not applicable
Pneumococcal Conjugate vaccine (PCV) <sup>10</sup>	1 to 4 doses			Not applicable



1. Demonstrated serologic evidence of measles, mumps or rubella antibodies or laboratory confirmation of these diseases is acceptable proof of immunity to these diseases. Seroprecipitests for polio are acceptable proof of immunity only if the test was performed before September 1, 2019, and all three serotypes were positive. A positive blood test for hepatitis B surface antibody is acceptable proof of immunity to hepatitis B. Demonstrated serologic evidence of varicella antibodies, laboratory confirmation of varicella disease or diagnosis by a physician, physician assistant or nurse practitioner that a child has had varicella disease is acceptable proof of immunity to varicella.
  - \*Serological titers are never accepted for tetanus, diphtheria, pertussis, meningococcal, haemophilus influenzae type b, and pneumococcal diseases.
  2. Diptheria and tetanus toxoids and acellular pertussis (DTaP) vaccine. (Minimum age: 6 weeks)
    - a. Children starting the series on time should receive a 5-dose series of DTaP vaccine at 2 months, 4 months, 6 months, 15 through 18 months and at 4 years or older. The fourth dose may be received as early as age 12 months, provided at least 6 months have elapsed since the third dose. However, the fourth dose of DTaP need not be repeated if it was administered at least 4 months after the third dose of DTaP. The final dose in the series must be received on or after the fourth birthday and at least 6 months after the previous dose.
    - b. If the fourth dose of DTaP was administered at 4 years or older, and at least 6 months after dose 3, the fifth (booster) dose of DTaP vaccine is not required.
    - c. Children 7 years and older who are not fully immunized with the childhood DTaP vaccine series should receive Tdap vaccine as the first dose in the catch-up series. If additional doses are needed, use 1d or Tdap vaccine. If the first dose was received before their first birthday, then 4 doses are required, as long as the final dose was received at 4 years or older. If the first dose was received on or after the first birthday, then 3 doses are required, as long as the final dose was received at 4 years or older.
    - d. [For further information, refer to the CDC Catch-Up Guidance for Children 4 Months through 6 Years of Age.](#)
    - e. [For further information, refer to the CDC Catch-Up Guidance for Children 7 through 9 Years of Age.](#)
  3. Tetanus and diphtheria toxoids and acellular pertussis (Tdap) and adolescent booster vaccine. (Minimum age for grades 6 through 11: 10 years; minimum age for grade 12: 7 years)
    - a. Students 11 years or older entering grades 6 through 12 are required to have one dose of Tdap.
    - b. In addition to the grade 6 through 12 requirement, Tdap may also be given as part of the catch-up series for students 7 years of age and older who are not fully immunized with the childhood DTaP series, as described above. In school year 2025-26, only doses of Tdap given at age 10 years or older will satisfy the Tdap requirement for students in grades 6 through 11; however, doses of Tdap given at age 7 years or older will satisfy the requirement for students in grade 12.
    - c. Students who are 10 years old in grade 6 and who have not yet received a Tdap vaccine are in compliance until they turn 11 years old.
    - d. [For further information, refer to the CDC Catch-Up Guidance for Children 10 through 18 Years of Age.](#)
  4. Inactivated polio vaccine (IPV) or oral polio vaccine (OPV). (Minimum age: 6 weeks)
    - a. Children starting the series on time should receive a series of IPV at 2 months, 4 months, 6 through 18 months, and at 4 years or older. The final dose in the series must be received on or after the fourth birthday and at least 6 months after the previous dose.
    - b. For students who received their fourth dose before age 4 and prior to August 7, 2010, 4 doses that are each separated by at least 4 weeks is sufficient.
    - c. If the third dose of polio vaccine was received at 4 years or older and at least 6 months after the previous dose, the fourth dose of polio vaccine is not required.
    - d. For children with a record of OPV, only trivalent OPV (OPV) counts toward New York State school polio vaccine requirements. Doses of OPV given before April 1, 2016, should be counted unless specifically noted as monovalent, bivalent or as given during a poliovirus immunization campaign. Doses of OPV given on or after April 1, 2016, must not be counted.
    - e. [For further information, refer to the CDC Catch-Up Guidance for Children 4 Months through 17 Years of Age.](#)
  5. Measles, mumps, and rubella (MMR) vaccine. (Minimum age: 12 months)
    - a. The first dose of MMR vaccine must have been received on or after the first birthday. The second dose must have been received at least 28 days (4 weeks) after the first dose to be considered valid.
    - b. Measles: One dose is required for pre-kindergarten. Two doses are required for grades kindergarten through 12.
    - c. Mumps: One dose is required for pre-kindergarten. Two doses are required for grades kindergarten through 12.
    - d. Rubella: At least one dose is required for all grades (pre-kindergarten through 12).
  6. Hepatitis B vaccine
    - a. Dose 1 may be given at birth or anytime thereafter. Dose 2 must be given at least 4 weeks (28 days) after dose 1. Dose 3 must be at least 8 weeks after dose 2 AND at least 16 weeks after dose 1 AND no earlier than age 24 weeks (when 4 doses are given, substitute "dose 4" for "dose 3" in these calculations).
    - b. Two doses of adult hepatitis B vaccine (Recombinax) received at least 4 months apart at age 11 through 15 years will meet the requirement.
  7. Varicella (chickenpox) vaccine. (Minimum age: 12 months)
    - a. The first dose of varicella vaccine must have been received on or after the first birthday. The second dose must have been received at least 28 days (4 weeks) after the first dose to be considered valid.
    - b. For children younger than 13 years, the recommended minimum interval between doses is 3 months (if the second dose was administered at least 4 weeks after the first dose, it can be accepted as valid). For persons 13 years and older, the minimum interval between doses is 4 weeks.
  8. Meningococcal conjugate ACWY vaccine (MenACWY). (Minimum age for grades 7 through 12: 10 years).
    - a. One dose of meningococcal conjugate vaccine is required for students entering grades 7, 8, 9, 10 and 11.
    - b. For students in grade 12, if the first dose of meningococcal conjugate vaccine was received at 16 years or older, the second (booster) dose is not required.
    - c. The second dose must have been received at 16 years or older. The minimum interval between doses is 8 weeks.
  9. Haemophilus influenzae type b (Hib) conjugate vaccine. (Minimum age: 6 weeks)
    - a. Children starting the series on time should receive Hib vaccine at 2 months, 4 months, 6 months and at 12 through 15 months. Children older than 15 months must get caught up according to the ACP catch-up schedule. The final dose must be received on or after 12 months.
    - b. If 2 doses of vaccine were received before age 12 months, only 3 doses are required with dose 3 at 12 through 15 months and at least 8 weeks after dose 2.
    - c. If dose 1 was received at age 12 through 14 months, only 2 doses are required with dose 2 at least 8 weeks after dose 1.
    - d. If dose 1 was received at 15 months or older, only 1 dose is required.
    - e. Hib vaccine is not required for children 5 years or older.
    - f. [For further information, refer to the CDC Catch-Up Guidance for Healthy Children 4 Months through 4 Years of Age.](#)
  10. Pneumococcal conjugate vaccine (PCV). (Minimum age: 6 weeks)
    - a. Children starting the series on time should receive PCV vaccine at 2 months, 4 months, 6 months and at 12 through 15 months\*. Children older than 15 months must get caught up according to the ACP catch-up schedule. The final dose must be received on or after 12 months.
    - b. Unvaccinated children ages 7 through 11 months are required to receive 2 doses, at least 4 weeks apart, followed by a third dose at 12 through 15 months.
    - c. Unvaccinated children ages 12 through 23 months are required to receive 2 doses of vaccine at least 8 weeks apart.
    - d. If one dose of vaccine was received at 24 months or older, no further doses are required.
    - e. PCV is not required for children 5 years or older.
    - f. [For further information, refer to the CDC Catch-Up Guidance for Healthy Children 4 Months through 4 Years of Age.](#)
- \*Depending on vaccine brand, schedule may change.

For further information, contact:

**New York State Department of Health**  
**Division of Vaccine Excellence**  
**Room 649, Corning Tower ESP**  
**Albany, NY 12237**  
**(518) 473-4437**

**New York City Department of Health and Mental Hygiene**  
**School Compliance Unit, Bureau of Immunization**  
**42-09 28th Street, 5th floor**  
**Long Island City, NY 11101**  
**(347) 396-2433**

New York State Department of Health/Division of Vaccine Excellence  
health.ny.gov/immunization



Interval Health History for Athletics

Student Name: \_\_\_\_\_ DOB: \_\_\_\_\_

School Name: \_\_\_\_\_ Grade (check):  7  8  9  10  11  12 Age: \_\_\_\_\_

Sport: \_\_\_\_\_ Date of last Health Exam: \_\_\_\_\_

Sport Level:  Modified  Fresh  JV  Varsity Date form completed: \_\_\_\_\_

**MUST be completed and signed by Parent/Guardian - Give details to any YES answers on the last page.**

SINCE YOUR CHILD'S LAST HEALTH EXAM – HAS YOUR CHILD?

GENERAL HEALTH	NO	YES
Been restricted by a health care provider from sports participation for any reason?	<input type="checkbox"/>	<input type="checkbox"/>
Had surgery?	<input type="checkbox"/>	<input type="checkbox"/>
Spent the night in a hospital?	<input type="checkbox"/>	<input type="checkbox"/>
Been diagnosed with mononucleosis within the last month?	<input type="checkbox"/>	<input type="checkbox"/>
Has only one functioning kidney?	<input type="checkbox"/>	<input type="checkbox"/>
Has or had a bleeding disorder?	<input type="checkbox"/>	<input type="checkbox"/>
Having problems with hearing or have congenital deafness?	<input type="checkbox"/>	<input type="checkbox"/>
Having problems with vision or only have vision in one eye?	<input type="checkbox"/>	<input type="checkbox"/>
Been diagnosed with a new medical condition?	<input type="checkbox"/>	<input type="checkbox"/>
If yes, check all that apply:		
<input type="checkbox"/> Asthma <input type="checkbox"/> Diabetes		
<input type="checkbox"/> Seizures <input type="checkbox"/> Sickle cell trait or disease		
<input type="checkbox"/> Other:		
Developed Allergies?	<input type="checkbox"/>	<input type="checkbox"/>
If yes, check all that apply		
<input type="checkbox"/> Food <input type="checkbox"/> Insect Bite <input type="checkbox"/> Latex		
<input type="checkbox"/> Medicine <input type="checkbox"/> Other:		
<input type="checkbox"/> Pollen		
Had anaphylaxis?	<input type="checkbox"/>	<input type="checkbox"/>
Carry an epinephrine auto-injector?	<input type="checkbox"/>	<input type="checkbox"/>
Had or has groin pain, a bulge, or a hernia?	<input type="checkbox"/>	<input type="checkbox"/>
<b>DEVICES / ACCOMMODATIONS</b>	<b>NO</b>	<b>YES</b>
Uses a brace, orthotic, or another device?	<input type="checkbox"/>	<input type="checkbox"/>
Has special devices or prostheses (insulin pump, glucose sensor, ostomy bag, etc.)?	<input type="checkbox"/>	<input type="checkbox"/>
Wears protective eyewear, such as goggles or a face shield?	<input type="checkbox"/>	<input type="checkbox"/>
Wears a hearing aid or cochlear implant?	<input type="checkbox"/>	<input type="checkbox"/>

Let the coach/school nurse know of any device used. Not required for contact lenses or eyeglasses.

SINCE YOUR CHILD'S LAST HEALTH EXAM – HAS YOUR CHILD?

BRAIN/HEAD INJURY HISTORY	NO	YES
Has or had a hit to the head that caused headache, dizziness, nausea, or confusion, or been told they had a concussion?	<input type="checkbox"/>	<input type="checkbox"/>
Received treatment for a seizure disorder or epilepsy?	<input type="checkbox"/>	<input type="checkbox"/>
Has or had headaches with exercise?	<input type="checkbox"/>	<input type="checkbox"/>
Has or had migraines?	<input type="checkbox"/>	<input type="checkbox"/>
<b>BREATHING</b>	<b>NO</b>	<b>YES</b>
Complained of getting extremely tired or short of breath during exercise?	<input type="checkbox"/>	<input type="checkbox"/>
Used or carries an inhaler or nebulizer?	<input type="checkbox"/>	<input type="checkbox"/>
Has or had wheezing or coughing frequently during or after exercise?	<input type="checkbox"/>	<input type="checkbox"/>
Been told by a health care provider they have asthma or exercise-induced asthma?	<input type="checkbox"/>	<input type="checkbox"/>
<b>DIGESTIVE (GI) HEALTH</b>	<b>NO</b>	<b>YES</b>
Has or had stomach or other GI problems?	<input type="checkbox"/>	<input type="checkbox"/>
Has an eating disorder?	<input type="checkbox"/>	<input type="checkbox"/>
Has a special diet or need to avoid certain foods?	<input type="checkbox"/>	<input type="checkbox"/>
Do you have concerns about your child's weight?	<input type="checkbox"/>	<input type="checkbox"/>
<b>INJURY HISTORY</b>	<b>NO</b>	<b>YES</b>
Been unable to move their arms or legs or had tingling, numbness, or weakness after being hit or falling?	<input type="checkbox"/>	<input type="checkbox"/>
Had an injury, pain, or joint swelling caused them to miss practice or a game?	<input type="checkbox"/>	<input type="checkbox"/>
Has or had a bone, muscle, or joint that bothers them?	<input type="checkbox"/>	<input type="checkbox"/>
Has or had joints that become painful, swollen, warm, or red with use?	<input type="checkbox"/>	<input type="checkbox"/>
Been diagnosed with a stress fracture?	<input type="checkbox"/>	<input type="checkbox"/>
<b>FEMALES ONLY</b>	<b>NO</b>	<b>YES</b>
Change in period frequency related to female athlete triad?	<input type="checkbox"/>	<input type="checkbox"/>



Student Name:

DOB:

SINCE YOUR CHILD'S LAST HEALTH EXAM – HAS YOUR CHILD?

<b>MALES ONLY</b>	NO	YES
Has only one testicle?	<input type="checkbox"/>	<input type="checkbox"/>
<b>SKIN HEALTH</b>	NO	YES
Has any rashes, pressure sores, or other skin problems?	<input type="checkbox"/>	<input type="checkbox"/>
Has a herpes or MRSA skin infection?	<input type="checkbox"/>	<input type="checkbox"/>
<b>COVID-19 INFORMATION</b>	NO	YES
Child tested positive for COVID-19?	<input type="checkbox"/>	<input type="checkbox"/>

**IF NO, STOP** and go to Family Heart Health History.

If **YES**, answer the questions below:

Date of positive COVID test:		
Was your child symptomatic?	<input type="checkbox"/>	<input type="checkbox"/>
Did your child see a healthcare provider for their COVID-19 symptoms?	<input type="checkbox"/>	<input type="checkbox"/>
Was your child hospitalized for COVID?	<input type="checkbox"/>	<input type="checkbox"/>
Was your child diagnosed with Multisystem Inflammatory Syndrome (MISC)?	<input type="checkbox"/>	<input type="checkbox"/>

SINCE YOUR CHILD'S LAST HEALTH EXAM – HAS YOUR CHILD?

<b>HEART HEALTH</b>	NO	YES
Had a test by a health care provider for their heart (e.g., EKG, echocardiogram, stress test)?	<input type="checkbox"/>	<input type="checkbox"/>
Has or had lightheadedness or dizziness during or after exercise?	<input type="checkbox"/>	<input type="checkbox"/>
Has or had chest pain, tightness, or pressure during or after exercise?	<input type="checkbox"/>	<input type="checkbox"/>
Has or had fluttering in the chest, skipped heartbeats, heart racing?	<input type="checkbox"/>	<input type="checkbox"/>
Been told by a healthcare provider they have or had a heart or blood vessel problem?	<input type="checkbox"/>	<input type="checkbox"/>

If **yes**, check all that apply:

- Chest Tightness or Pain
  - High Blood Pressure
  - Low Blood Pressure
  - New fast or slow heart rate
  - Has implanted cardiac defibrillator (ICD)
  - Had a pacemaker implanted
  - Other:
- Heart Infections
  - Heart Murmur
  - High Cholesterol
  - Kawasaki Disease

SINCE YOUR CHILD'S LAST HEALTH EXAM - CHECK ANY **NEW** FAMILY HEART HEALTH HISTORY

A relative had or is currently experiencing any of the following: (Check all that apply)

- Enlarged Heart/ Hypertrophic Cardiomyopathy/ Dilated Cardiomyopathy
- Arrhythmogenic Right Ventricular Cardiomyopathy?
- Heart rhythm problems: long or short QT interval?
- Structural heart abnormality, repaired or unrepaired?
- Known heart abnormalities or sudden death before age 50?
- Unexplained fainting, seizures, drowning, near drowning, or car accident before age 50?
- Brugada Syndrome?
- Catecholaminergic Ventricular Tachycardia?
- Marfan Syndrome (aortic rupture)?
- Heart attack at age 50 or younger?
- Pacemaker or implanted cardiac defibrillator (ICD)?

If you answered **NO** to all questions, **STOP**. Sign and date below.

**GO** to page 3 if you answered **YES** to a question.

Information on this form is **NEW** information since my child's last health examination.

Parent/Guardian Signature:

Date:



Student  
Name:

DOB:

If you answered YES to any questions, give details. Sign and date below.

Parent/Guardian  
Signature:

Date:





## REQUIRED NYS SCHOOL HEALTH EXAMINATION FORM

### TO BE COMPLETED BY PRIVATE HEALTHCARE PROVIDER OR SCHOOL MEDICAL DIRECTOR

**Note:** NYSED requires a physical exam for new entrants and students in Grades Pre-K or K, 1, 3, 5, 7, 9 & 11; annually for interscholastic sports; and working papers as needed; or as required by the Committee on Special Education (CSE) or Committee on Pre-School Special Education (CPSE).

#### STUDENT INFORMATION

Name:	Affirmed Name (if applicable):	DOB:
Sex Assigned at Birth: <input type="checkbox"/> Female <input type="checkbox"/> Male	Gender Identity: <input type="checkbox"/> Female <input type="checkbox"/> Male <input type="checkbox"/> Nonbinary <input type="checkbox"/> X	
School:	Grade:	Exam Date:

#### HEALTH HISTORY

If yes to any diagnoses below, check all that apply and provide additional information.

<input type="checkbox"/> Allergies	Type:	<input type="checkbox"/> Medication/Treatment Order Attached <input type="checkbox"/> Anaphylaxis Care Plan Attached
<input type="checkbox"/> Asthma	<input type="checkbox"/> Intermittent <input type="checkbox"/> Persistent <input type="checkbox"/> Other:	<input type="checkbox"/> Medication/Treatment Order Attached <input type="checkbox"/> Asthma Care Plan Attached
<input type="checkbox"/> Seizures	Type:	Date of last seizure: <input type="checkbox"/> Medication/Treatment Order Attached <input type="checkbox"/> Seizure Care Plan Attached
<input type="checkbox"/> Diabetes	Type: <input type="checkbox"/> 1 <input type="checkbox"/> 2	<input type="checkbox"/> Medication/Treatment Order Attached <input type="checkbox"/> Diabetes Medical Mgmt. Plan Attached

**Risk Factors for Diabetes or Pre-Diabetes: Consider screening for T2DM if BMI% > 85% and has 2 or more risk factors: Family Hx T2DM, Ethnicity, Sx Insulin Resistance, Gestational Hx of Mother, and/or pre-diabetes.**

BMI \_\_\_\_\_ kg/m<sup>2</sup>  
Percentile (Weight Status Category):  < 5<sup>th</sup>  5<sup>th</sup>-49<sup>th</sup>  50<sup>th</sup>-84<sup>th</sup>  85<sup>th</sup>-94<sup>th</sup>  95<sup>th</sup>-98<sup>th</sup>  99<sup>th</sup> and >  
Hypertlipidemia:  Yes  Not Done      Hypertension:  Yes  Not Done

#### PHYSICAL EXAMINATION/ASSESSMENT

Height:	Weight:	BP:	Pulse:	Respirations:	
Laboratory Testing	Positive	Negative	Date	Lead Level Required for PreK & K	Date
TB- PRN	<input type="checkbox"/>	<input type="checkbox"/>		<input type="checkbox"/> Test Done <input type="checkbox"/> Lead Elevated $\geq$ 5 $\mu$ g/dL	
Sickle Cell Screen-PRN	<input type="checkbox"/>	<input type="checkbox"/>			

#### System Review Within Normal Limits

<input type="checkbox"/> Abnormal Findings – List Other Pertinent Medical Concerns Below (e.g., concussion, mental health, one functioning organ)			
<input type="checkbox"/> HEENT	<input type="checkbox"/> Lymph nodes	<input type="checkbox"/> Abdomen	<input type="checkbox"/> Extremities
<input type="checkbox"/> Dental	<input type="checkbox"/> Cardiovascular	<input type="checkbox"/> Back/Spine/Neck	<input type="checkbox"/> Skin
<input type="checkbox"/> Mental Health	<input type="checkbox"/> Lungs	<input type="checkbox"/> Genitourinary	<input type="checkbox"/> Neurological
<input type="checkbox"/> Assessment/Abnormalities Noted/Recommendations:		Diagnoses/Problems (list)	ICD-10 Code *

Additional Information Attached

\*Required only for students with an IEP receiving Medicaid



Name:

Affirmed Name (if applicable):

DOB:

**SCREENINGS**

Vision & Hearing Screenings Required for Prek or K, 1, 3, 5, 7, & 11

Vision Screening	With Correction	Yes	No	Right	Left	Referral	Not Done
Distance Acuity				20/	20/	<input type="checkbox"/> Yes	<input type="checkbox"/>
Near Vision Acuity				20/	20/	<input type="checkbox"/> Yes	<input type="checkbox"/>
Color Perception Screening		<input type="checkbox"/> Pass	<input type="checkbox"/> Fail				<input type="checkbox"/>

Notes

**Hearing Screening:** Passing indicates student can hear 20dB at all frequencies: 500, 1000, 2000, 3000, 4000 Hz; for grades 7 & 11 also test at 6000 & 8000 Hz.

**Not Done**

Pure Tone Screening

Right  Pass  Fail Left  Pass  Fail

Referral  Yes

Notes

**Scoliosis Screening:** Boys grade 9, Girls grades 5 & 7

Negative	Positive	Referral	Not Done
<input type="checkbox"/>	<input type="checkbox"/>	<input type="checkbox"/> Yes	<input type="checkbox"/>

**FOR PARTICIPATION IN PHYSICAL EDUCATION/SPORTS\*/PLAYGROUND/WORK**

**\* Family cardiac history reviewed** – required for Dominic Murray Sudden Cardiac Arrest Prevention Act

**Student may participate in all activities without restrictions.**

**If Restrictions Apply** – Complete the information below

**Student is restricted from participation in:**

**Contact Sports:** Basketball, Competitive Cheerleading, Diving, Downhill Skiing, Field Hockey, Football, Gymnastics, Ice Hockey, Lacrosse, Soccer, and Wrestling.

**Limited Contact Sports:** Baseball, Fencing, Softball, and Volleyball.

**Non-Contact Sports:** Archery, Badminton, Bowling, Cross-Country, Golf, Rifle, Swimming, Tennis, and Track & Field.

**Other Restrictions:**

**Developmental Stage for Athletic Placement Process ONLY required for students in Grades 7 & 8 who wish to play at the high school interscholastic sports level **OR** Grades 9-12 who wish to play at the modified interscholastic sports level.**

**Tanner Stage:**  I  II  III  IV  V

**Other Accommodations\*:** Provide Details (e.g., brace, insulin pump, prosthetic, sports goggles, etc.):

\*Check with the athletic governing body if prior approval/form completion is required for use of the device at athletic competitions.

**MEDICATIONS**

Order Form for medication(s) needed at school attached

**COMMUNICABLE DISEASE**

**IMMUNIZATIONS**

Confirmed free of communicable disease during exam

Record Attached

Reported in NYSIIS

**HEALTHCARE PROVIDER**

Healthcare Provider Signature:

Provider Name: *(please print)*

Provider Address:

Phone:

Fax:

**Please Return This Form to Your Child's School Health Office When Completed.**



**Binghamton City School District**  
**Parent and Physician's Authorization for Administration of Medications in**  
**School and School Activities**



**A. To be Completed by the Parent or Guardian:**

I request that my child: \_\_\_\_\_, DOB: \_\_\_\_\_, receive the medication(s) prescribed below by our Health Care Provider. The medication(s) is/are to be furnished by me in the properly labeled original container from the Pharmacy.\*  
 Signature (Parent or Guardian): \_\_\_\_\_  
 Telephone: cell: \_\_\_\_\_, home: \_\_\_\_\_, work: \_\_\_\_\_

**B. To be Completed by the Health Care Provider:**

I request that my patient, as listed below, receive the following medication(s):

Name of Student: \_\_\_\_\_, DOB: \_\_\_\_\_

Diagnosis: \_\_\_\_\_

Medication	Dosage	Frequency/time to be taken	Route of Administration

**The Student has demonstrated proper use of the inhaler/automatic injector device and may carry and self-administer.** \_\_\_\_\_ School Nursing Personnel reviewed responsibility for self-carry and administration.

\_\_\_\_\_ Medication may be omitted for field trips \_\_\_\_\_ Medication MAY NOT be omitted from field trips

\_\_\_\_\_ Medication is scheduled time may be adjusted so student may attend field trips

Duration of Treatment/School Year: \_\_\_\_\_

Possible Side Effects and/or Adverse Reactions (if any): \_\_\_\_\_

\_\_\_\_\_ Health Care Provider's Signature \_\_\_\_\_ Date

**Office Stamp (with phone number):**

- \* Medication must be in the original pharmacy labeled container with student's name, the name of medication and specific orders (You may ask your pharmacist for a **"double label"** so you can have a labeled container at home).
- \* Medication and refills must be brought to school by the parent, guardian or responsible adult.
- \* It is a **violation of school policy** for students to carry any type of medication unless approved by the School Nurse-Teacher or School Nurse. Sending in medication(s) with your child may subject him/her to discipline.
- \* **All medication must be picked up at the conclusion of the school year. Medications left in the Health Office may be discarded without further notice.**

School Fax number: \_\_\_\_\_.





**Return To:**  
Binghamton CSD  
Food Service Department  
31 Main Street, Binghamton, NY 13905  
Attn: Steve Klock

### MEAL MODIFICATIONS AT SCHOOL

Name of Student: \_\_\_\_\_ School: \_\_\_\_\_ Grade: \_\_\_\_\_

Description of Physical or Medical Impairment:

\_\_\_\_\_

\_\_\_\_\_

**Food Allergies**

- Egg       Fish       Peanut       Shellfish       Tree Nut       Soy       Wheat
- Milk       Lactose Intolerance       Other: \_\_\_\_\_

Is this condition permanent or temporary?     Permanent     Temporary  
If temporary, please give length of time instructions are to be followed with explanation:

\_\_\_\_\_

\_\_\_\_\_

**Diet Prescription:** (Check all that apply)

Allergies (Describe) \_\_\_\_\_

Other (Describe) \_\_\_\_\_

**Foods Omitted:** \_\_\_\_\_

**Substitutions:**     Specified Substitutions: \_\_\_\_\_

Substitutions as per BOCES Registered Dietitian

Other Information Regarding Meal Modifications: (Please provide additional information below or attach to this form.)

I certify that the above-named student needs meal modifications as described because of the student's physical or medical impairment.

Medical Professional's Signature \_\_\_\_\_ Office Phone Number \_\_\_\_\_ Date \_\_\_\_\_





\*Please Print\*

## Dental Health Certificate- Optional

Parent/Guardian: New York State law (Chapter 281) permits schools to request a dental health examination in the following grades: school entry, K, 2, 4, 7, & 10. Your child may have a dental check-up during this school year to assess his/her fitness to attend school. Please complete Section 1 and take the form to your registered dentist for an assessment. If your child had a dental check-up before he/she started the school, ask your dentist to fill out Section 2. Return the completed form to the school's medical director or school nurse as soon as possible.

### Section 1. To be completed by Parent or Guardian (Please Print)

Child's Name:		Last	First	Middle
Birth Date:	/	/	Sex: <input type="checkbox"/> Male <input type="checkbox"/> Female	
Month	Day	Year	Will this be your child's first visit to a dentist? <input type="checkbox"/> Yes <input type="checkbox"/> No	
School: Name				Grade

Have you noticed any problem in the mouth that interferes with your child's ability to chew, speak or focus on school activities?  Yes  No

I understand that by signing this form I am consenting for the child named above to receive a basic oral health assessment. I understand this assessment is only a limited means of evaluation to assess the student's dental health, and I would need to secure the services of a dentist in order for my child to receive a complete dental examination with x-rays/ if necessary to maintain good oral health.

I also understand that receiving this preliminary oral health assessment does not establish any new, ongoing or continuing doctor-patient relationship. Further, I will not hold the dentist or those performing this assessment responsible for the consequences or results should I choose NOT to follow the recommendations listed below.

Parent's Signature

Date

### Section 2. To be completed by the Dentist/ Dental Hygienist

I. The dental health condition of \_\_\_\_\_ on \_\_\_\_\_ (date of exam) The date of the exam needs to be within 12 months of the start of the school year in which it is requested. Check one:

Yes, The student listed above is in fit condition of dental health to permit his/her attendance at the public schools.

No, The student listed above is not in fit condition of dental health to permit his/her attendance at the public schools.

NOTE: Not in fit condition of dental health means that a condition exists that interferes with a student's ability to chew, speak or focus on school activities including pain, swelling or infection related to clinical evidence of open cavities. The designation of not in fit condition of dental health to permit attendance at the public school does not preclude the student from attending school.

Dentist's name and address (please print or stamp)	Dentist's Signature

Optional Sections - If you agree to release this information to your child's school, please initial here.

#### II. Oral Health Status (check all that apply).

Yes  No Caries Experience/Restoration History – Has the child ever had a cavity (treated or untreated)? [A filling (temporary/permanent) OR a tooth that is missing because it was extracted as a result of caries OR an open cavity].

Yes  No Untreated Caries – Does this child have an open cavity? [At least 1/2 mm of tooth structure loss at the enamel surface. Brown to dark-brown coloration of the walls of the lesion. These criteria apply to pits and fissure cavitated lesions as well as those on smooth tooth surfaces. If retained root, assume that the whole tooth was destroyed by caries. Broken or chipped teeth, plus teeth with temporary fillings, are considered sound unless a cavitated lesion is also present].

Yes  No Dental Sealants Present

Other problems (Specify): \_\_\_\_\_

#### II. Treatment Needs (check all that apply)

No obvious problem. Routine dental care is recommended. Visit your dentist regularly.

May need dental care. Please schedule an appointment with your dentist as soon as possible for an evaluation.

Immediate dental care is required. Please schedule an appointment immediately with your dentist to avoid problems.

Please duplicate this form as needed for each child





AT-16

THE UNIVERSITY OF THE STATE OF NEW YORK  
THE STATE EDUCATION DEPARTMENT  
Albany, New York 12234

**PHYSICAL FITNESS CERTIFICATION**

---

(Name of Applicant) \_\_\_\_\_

(Address) \_\_\_\_\_

\_\_\_\_\_  
(Date of Birth)

Male

Female

Nonbinary

**INSTRUCTIONS TO HEALTHCARE PROVIDER:**

**Complete Part A unless certificate is limited --in which case complete Part B**

**A. I hereby certify that I have examined the above-named applicant and find they are physically qualified for lawful employment.**

(Date of Physical) \_\_\_\_\_

(Signature of Healthcare Provider) \_\_\_\_\_

(Address of Healthcare Provider) \_\_\_\_\_

**B. I hereby certify that I have examined the above-named applicant and find they have a disability that requires limited employment.**

(1) Disability ---

(2) Occupation ---

(3) Employer ---

(Date) \_\_\_\_\_

(Signature of Healthcare Provider) \_\_\_\_\_

(Address of Healthcare Provider) \_\_\_\_\_

**If a limited certificate is indicated, the disability, occupation, and employer must be indicated to make this certificate valid.**





THE STATE EDUCATION DEPARTMENT / THE UNIVERSITY OF THE STATE OF NEW YORK / ALBANY, NY 12234

Office of P-20 Education Policy  
Child Nutrition Program Administration  
89 Washington Avenue, Room 375 EBA, Albany, NY 12234  
(518) 473-8781 Fax (518) 473-0018  
[www.nysed.gov/cn/cnims.htm](http://www.nysed.gov/cn/cnims.htm)

### Letter to Parents for School Meal Programs Special Provision Options (Provision 2 Non-Base Year & Community Eligibility Provision)

Dear Parent or Guardian:

We are pleased to inform you that Binghamton City School District will be implementing a meal certification option available to schools participating in the National School Lunch and School Breakfast Programs for 2025-2026.

#### What does this mean for your child(ren) attending the school(s) identified above?

All students enrolled at Binghamton City School District are eligible to receive a healthy breakfast and lunch at school at **no charge** to your household each day of the 2025-2026 school year. No further action is required of you. Your child(ren) will be able to participate in these meal programs without having to pay a fee or submit an application.

If you have any further questions, please contact us at 607-766-3926.

Sincerely,

Annie Hudock  
Sr. Food Service Director

In accordance with federal civil rights law and USDA civil rights regulations and policies, the USDA, its agencies, offices, employees, and institutions participating in or administering USDA programs are prohibited from discriminating based on race, color, national origin, religion, sex, disability, age, marital status, family/parental status, income derived from a public assistance program, political beliefs, or reprisal or retaliation for prior civil rights activity, in any program or activity conducted or funded by USDA (not all bases apply to all programs). Remedies and complaint filing deadlines vary by program or incident.

Persons with disabilities who require alternative means of communication for program information (e.g., Braille, large print, audiotope, American Sign Language, etc.) should contact the state or local agency that administers the program or contact USDA through the Telecommunications Relay Service at 711 (voice and TTY). Additionally, program information may be made available in languages other than English.

To file a program discrimination complaint, complete the USDA Program Discrimination Complaint Form, [AD-3027](#), found online at [How to File a Program Discrimination Complaint](#) and at any USDA office or write a letter addressed to USDA and provide in the letter all of the information requested in the form. To request a copy of the complaint form, call (866) 632-9992. Submit your completed form or letter to USDA by:

1. **Mail:** U.S. Department of Agriculture, Office of the Assistant Secretary for Civil Rights, 1400 Independence Avenue, SW, Mail Stop 9410, Washington, D.C. 20250-9410;
2. **Fax:** (202) 690-7442; or
3. **Email:** [program.intake@usda.gov](mailto:program.intake@usda.gov).

*USDA is an equal opportunity provider, employer, and lender.*



## PARENT/GUARDIAN CONSENT TO RELEASE ELIGIBILITY INFORMATION FOR FREE AND REDUCED PRICE MEALS

Dear Parent/Guardian:

If your child is eligible for free and reduced-price meals, he/she also may be eligible for other benefits. To receive these I you must provide written consent to permit school officials to give your name, address, and an indication that your household is for free and reduced-price meals, to representatives of certain programs. **Failure to sign a consent statement that wi disclosure of this information will not affect your child's eligibility or participation in the school meals program.**

Some of the programs that may request names and eligibility information to be used to provide benefits, and the parent/guardian consent is required, include: federal health insurance programs such as Medicaid or Children's Health Insurance (CHIP), other federal programs, State programs, local health and education programs and other local activities. For example, disclosure of children's eligibility for free and reduced-price meals to determine eligibility for free textbooks, free band instruments baskets, school supplies, etc., or reduced fees for summer school or driver education programs, would require written consent from your child's parent/guardian.

If you wish to provide consent to release information contained in your child's free and reduced-price meal application, to other benefits, please complete the attached consent statement.

Please call Rosa Sheph at 607-766-3926 if you have questions.

Sincerely,  
Annie Hudock  
Sr. Food Service Director  
Enclosure (consent statement)

### **Nondiscrimination Statement:**

In accordance with federal civil rights law and USDA civil rights regulations and policies, the USDA, its agencies, offices, employees, and institutions participating in administering USDA programs are prohibited from discriminating based on race, color, national origin, religion, sex, disability, age, marital status, family/p status, income derived from a public assistance program, political beliefs, or reprisal or retaliation for prior civil rights activity, in any program or activity conducted by USDA (not all bases apply to all programs). Remedies and complaint filing deadlines vary by program or incident.

Persons with disabilities who require alternative means of communication for program information (e.g., Braille, large print, audiotope, American Sign Language) should contact the state or local agency that administers the program or contact USDA through the Telecommunications Relay Service at 711 (voice and TTY). Additionally, program information may be made available in languages other than English.

To file a program discrimination complaint, complete the USDA Program Discrimination Complaint Form, AD-3027, found online at How to File a Program Discrimination Complaint and at any USDA office or write a letter addressed to USDA and provide in the letter all of the information requested in the form. To file a copy of the complaint form, call (866) 632-9992. Submit your completed form or letter to USDA by:

1. **mail:**  
U.S. Department of Agriculture  
Office of the Assistant Secretary for Civil Rights  
1400 Independence Avenue, SW, Mail Stop 9410  
Washington, D.C. 20250-9410; or
2. **fax:**  
(202) 690-7442; or
3. **email:**  
[program\\_intake@usda.gov](mailto:program_intake@usda.gov)

This institution is an equal opportunity provider.



### CONSENT TO RELEASE FREE OR REDUCED PRICE ELIGIBILITY INFORMATION

School officials may release information that shows that my child/children are eligible for free or reduced-price meals to the following programs. I understand that the information will only be provided to the program(s) checked.

(Check the box next to the program area(s) you wish to release information to)

- State or federal programs such as the Youth Summer Work program or the Educational Talent Search Program.
- Local health and education programs and other local programs that provide benefits such as free textbooks or school supplies, free band instruments, or reduced fees for summer school or driver education.
- Community programs such as holiday baskets, summer arts and playground programs.

I understand that I will be releasing information that will show that my child/children are eligible for free and reduced-price meals or free. I give consent to release my confidential information for the above-named uses.

Child/Children:

---

---

---

I certify that I am the child's parent/guardian for whom the application was made.

Signature of Parent/Guardian: \_\_\_\_\_

Print Name: \_\_\_\_\_

Address: \_\_\_\_\_

Phone Number: \_\_\_\_\_

Date: \_\_\_\_\_

Mail to:

**Binghamton City School District – Food Service Dept.**

**31 Main Street**

**Binghamton, NY 13905**

**Nondiscrimination Statement:**

In accordance with federal civil rights law and USDA civil rights regulations and policies, the USDA, its agencies, offices, employees, and institutions participating in or administering USDA programs are prohibited from discriminating based on race, color, national origin, religion, sex, disability, age, marital status, family/parental status, income derived from a public assistance program, political beliefs, or reprisal or retaliation for prior civil rights activity, in any program or activity conducted or funded by USDA (not all bases apply to all programs). Remedies and complaint filing deadlines vary by program or incident.

Persons with disabilities who require alternative means of communication for program information (e.g., Braille, large print, audiotape, American Sign Language, etc.) should contact the state or local agency that administers the program or contact USDA through the Telecommunications Relay Service at 711 (voice and TTY). Additionally, program information may be made available in languages other than English.

To file a program discrimination complaint, complete the USDA Program Discrimination Complaint Form, AD-3027, found online at How to File a Program Discrimination Complaint and at any USDA office or write a letter addressed to USDA and provide in the letter all of the information requested in the form. To request a copy of the complaint form, call (866) 632-9992. Submit your completed form or letter to USDA by:

1. **mail:**
  - U.S. Department of Agriculture
  - Office of the Assistant Secretary for Civil Rights
  - 1400 Independence Avenue, SW, Mail Stop 9410
  - Washington, D.C. 20250-9410; or
2. **fax:**
  - (202) 690-7442; or
3. **email:**
  - [program.intake@usda.gov](mailto:program.intake@usda.gov)

This institution is an equal opportunity provider.



Dear Parent/Guardian:

All children in the school will receive meals at no charge regardless of household income or completion of this form. However, families are strongly encouraged to complete and submit the Free and Reduced-Price application as this form is used to determine eligibility benefits for State and federal funding/programs.

Below are common questions and answers to help with the application process.

- DO I NEED TO FILL OUT AN APPLICATION FOR EACH CHILD?** No. Complete one Application for all children in the household and return to: **Binghamton City School District, Attn: Food Service Dept, 31 Main St, Binghamton, NY 13905.**
- WHO CAN QUALIFY FOR FEDERAL FREE MEAL BENEFITS?**
  - All children in households receiving benefits from the Supplemental Nutrition Assistance Program (SNAP), the Food Distribution Program on Indian Reservations (FDPIR) or Temporary Assistance to Needy Families (TANF), are eligible for free meals. Categorical eligibility for free meal benefits is extended to all children in a household when the application lists an Assistance Program's case number for any household member.
  - Foster children that are under the legal responsibility of a foster care agency or court are eligible for free meals, regardless of income.
  - Children participating in their school's Head Start Program are eligible for free meals.
  - Children who meet the definition of homeless, runaway, or migrant are eligible for free meals. Households with children who meet the definition of homeless, runaway or migrant should call **Denise Alcindor at 607-762-8200** to see if they qualify.
  - Children may receive free meals if your household's gross income is within the free or reduced-price limits on the Federal Income Eligibility Guidelines. Students in New York State that are approved for reduced price meals will receive breakfast and lunch meals and snacks served through the Afterschool Snack Program at no charge.
  - Your child(ren) meet the income criteria if the household income falls at or below the limits on this chart:

2025-2026 Reduced Price Income Eligibility Guidelines					
Household Size	Annual	Monthly	Twice per Month	Every Two Weeks	Weekly
1	\$28,953	\$2,413	\$1,207	\$1,114	\$557
2	\$39,128	\$3,261	\$1,631	\$1,505	\$753
3	\$49,303	\$4,109	\$2,055	\$1,897	\$949
4	\$59,478	\$4,957	\$2,479	\$2,288	\$1,144
5	\$69,653	\$5,805	\$2,903	\$2,679	\$1,340
6	\$79,828	\$6,653	\$3,327	\$3,071	\$1,536
7	\$90,003	\$7,501	\$3,751	\$3,462	\$1,731
8	\$100,178	\$8,349	\$4,175	\$3,853	\$1,927
Each Add'l person, add	\$10,175	\$848	\$424	\$392	\$196

- SHOULD I FILL OUT AN APPLICATION IF I RECEIVED A LETTER THIS SCHOOL YEAR SAYING MY CHILDREN ARE APPROVED FOR FREE MEALS?** Please read the letter you got carefully and follow the instructions. Call the school at **607-766-3926** if you have questions.
- MY CHILD'S APPLICATION WAS APPROVED LAST YEAR. DO I NEED TO FILL OUT ANOTHER ONE?** Yes. Your child's application is only good for that school year and carried over for the first 30 operating days of this school year (or until a new eligibility determination is made, whichever comes first).
- IGET WOMEN, INFANTS AND CHILDREN (WIC) BENEFITS. CAN MY CHILD(REN) GET FREE MEALS?** All children in schools participating in the Universal Free Meals program receive meals at no charge, however, households participating in WIC may be free or reduced-price eligible benefits. Please fill out an Application for Free and Reduced-Price School Meals.
- WILL THE INFORMATION I GIVE BE CHECKED?** Schools are required to conduct verification of a sample of submitted applications. If your application is selected then written proof of the household income is required.
- IF I DON'T QUALIFY NOW, MAY I APPLY LATER?** Yes, you may apply at any time during the school year. For example, children with a parent or guardian who becomes unemployed or who experiences financial hardship mid-year may become eligible for free and reduced-price eligible benefits if the household income drops below the income limit.
- WHAT IF I DISAGREE WITH THE SCHOOL'S DECISION ABOUT MY APPLICATION?** You should talk to school officials. You also may ask for a hearing by calling or writing to: **Dr. Tonia Thompson, Superintendent of Schools, 31 Main St, Binghamton, NY 13905.**



9. **MAY I APPLY IF SOMEONE IN MY HOUSEHOLD IS NOT A U.S. CITIZEN?** Yes. You, your child(ren), or other household members do not have to be U.S. citizens to qualify for free or reduced-price eligible benefits.
10. **WHO SHOULD I INCLUDE AS MEMBERS OF MY HOUSEHOLD?** You must include all people living in your household, related or not (such as grandparents, other relatives, or friends) who share income and expenses. If you live with other people who are economically independent (for example, people who you do not support, who do not share income with you or your children, and who pay a pro-rated share of expenses), do not include them.
11. **WHAT IF MY INCOME IS NOT ALWAYS THE SAME?** List the amount that you normally receive. For example, if you normally make \$1000 each month, but you missed some work last month and only made \$900, put down that you made \$1000 per month. If you normally get overtime, include it, but do not include it if you only work overtime sometimes. If you have lost a job or had your hours or wages reduced, use your current income.
12. **WE ARE IN THE MILITARY. DO WE REPORT OUR INCOME DIFFERENTLY?** Your basic pay and cash bonuses must be reported as income. If you get any cash value allowances for off-base housing, food, clothing, it must also be included as income. However, if your housing is part of the Military Housing Privatization Initiative, do not include your housing allowance as income. Any additional combat pay resulting from deployment is also excluded from income.
13. **MY FAMILY NEEDS MORE HELP. ARE THERE OTHER PROGRAMS WE MIGHT APPLY FOR?** To find out how to apply for **SNAP** or other assistance benefits, contact your local assistance office or call **1-800-342-3009**.

**How to Apply:** Complete one Application for Free and Reduced-Price School Meals/Milk, following the instructions on the form, for your household and return it to the **designated office listed on the application**. All household members and children should be listed on one application.

- If you receive SNAP or TANF benefits or participate in the FDPIR, the application must include the children's names, the household SNAP, TANF or FDPIR case number and the signature of an adult household member.
  - Contact your local Department of Social Services for your SNAP or TANF case number, if necessary.
  - No application is necessary if the household was notified by the School Food Authority that their children have been directly certified based on Assistance Program participation. If the household is not sure if their children have been directly certified, the household should contact the school.
- If you do not list a SNAP, TANF or FDPIR case number for any household member, the application must include the names of everyone in the household, the amount of income for each household member, how often it is received and where it comes from. It must include the signature of an adult household member and the last four digits of that adult's social security number or check the box if the adult does not have a social security number.
- **An application for free and reduced-price benefits cannot be approved unless complete eligibility information is submitted, as indicated on the application and in the instructions.** We will let you know when your application is approved or denied.

**Reporting Changes:** The benefits that you are approved for at the time of application are effective for the entire school year.

**Meal Service to Children with Disabilities:** Federal regulations require schools and institutions to serve meals at no extra charge to children with a disability which may restrict their diet. A student with a disability is defined in 7CFR Part 15b.3 of Federal regulations, as one who has a physical or mental impairment which substantially limits one or more major life activities of such individual, a record of such an impairment or being regarded as having such an impairment. Major life activities include but are not limited to: functions such as caring for one's self, performing manual tasks, seeing, hearing, eating, sleeping, walking, standing, lifting, bending, speaking, breathing, learning, reading, concentrating, thinking, communicating, and working. You must request meal modifications from the school and provide the school with medical statement from a State licensed healthcare professional or Registered Dietitian. **If you believe your child needs substitutions because of a disability, please get in touch with us for further information, as there is specific information that the medical statement must contain.**

**Confidentiality:** The United States Department of Agriculture has approved the release of students names and eligibility status, without parent/guardian consent, to persons directly connected with the administration or enforcement of federal education programs such as Title I and the National Assessment of Educational Progress (NAEP), which are United States Department of Education programs used to determine areas such as the allocation of funds to schools, to evaluate socioeconomic status of the school's attendance area, and to assess educational progress. Information may also be released to State health or State education programs administered by the State agency or local education agency, provided the State or local education agency administers the program, and federal State or local nutrition programs similar to the National School Lunch Program. Additionally, all information contained in the free and reduced price application may be released to persons directly connected with the administration or enforcement of programs authorized under the National School Lunch Act (NSLA) or Child Nutrition Act (CNA), including the National School Lunch and School Breakfast Programs, the Special Milk Program, the Child and Adult Care Food Program, Summer Food Service Program and the Special Supplemental Nutrition Program for Women Infants and Children (WIC); the Comptroller General of the United States for audit purposes, and federal, State or local law enforcement officials investigating alleged violation of the programs under the NSLA or CNA. **The disclosure of eligibility information not specifically authorized by the NSLA requires a written consent statement from the parent/guardian.**

In the operation of child feeding programs, no child will be discriminated against because of race, sex, color, national origin, age, disability or limited English proficiency.



If you have other questions or need help, call 607-766-3926. Thank you, *Annie Hudock*

Annie Hudock  
Director of Food Services

**Nondiscrimination Statement** This explains what to do if you believe you have been treated unfairly.

In accordance with federal civil rights law and USDA civil rights regulations and policies, the USDA, its agencies, offices, employees, and institutions participating in administering USDA programs are prohibited from discriminating based on race, color, national origin, religion, sex, disability, age, marital status, family/parental status, income derived from a public assistance program, political beliefs, or reprisal or retaliation for prior civil rights activity, in any program or activity conducted or funded by USDA (not all bases apply to all programs). Remedies and complaint filing deadlines vary by program or incident.

Persons with disabilities who require alternative means of communication for program information (e.g., Braille, large print, audiotape, American Sign Language, etc.) should contact the state or local agency that administers the program or contact USDA through the Telecommunications Relay Service at 711 (voice and TDD). Additionally, program information may be made available in languages other than English.

To file a program discrimination complaint, complete the USDA Program Discrimination Complaint Form, AD-3027, found online at How to File a Program Discrimination Complaint and at any USDA office or write a letter addressed to USDA and provide in the letter all of the information requested in the form. To request a copy of the complaint form, call (866) 632-9992. Submit your completed form or letter to USDA by:

1. **mail:**  
U.S. Department of Agriculture  
Office of the Assistant Secretary for Civil Rights  
1400 Independence Avenue, SW, Mail Stop 9410  
Washington, D.C. 20250-9410; or
2. **fax:**  
(202) 690-7442; or
3. **email:**  
[program.intake@usda.gov](mailto:program.intake@usda.gov)

This institution is an equal opportunity provider.

FEBRUARY 2026  
 S M T W T F S  
 1 2 3 4 5 6 7  
 8 9 10 11 12 13 14  
 15 16 17 18 19 20 21  
 22 23 24 25 26 27 28

# 2026

# March

APRIL 2026  
 S M T W T F S  
 1 2 3 4  
 5 6 7 8 9 10 11  
 12 13 14 15 16 17 18  
 19 20 21 22 23 24 25  
 26 27 28 29 30

Sunday	Monday	Tuesday	Wednesday	Thursday	Friday	Saturday
1  First Day of Women's History Month	2	3	4  District Art Show 5 p.m.  Early Release Day Elementary & Middle Schools Only	5	6  BHS Musical 7:30 p.m.	7  BHS Musical 7:30 p.m.
8  BHS Musical 2:30 p.m.  Daylight Savings Time Ends Set Clocks Ahead One Hour	9	10	11  Eastside Band Fest 6:30 p.m.	12  Superintendent's Conference Day No School	13  No School	14  SAT Test
15	16  Laylat al-Qadr	17  BOE Meeting 7 p.m.  St. Patrick's Day	18	19  Eid al-Fitr Begins at Sundown	20  Second Trimester Ends (Elem.)	21
22	23  Third Trimester Begins (Elem.)	24	25  Elementary Parent/Teacher Conference Day  BHS Kaleidoscope Concert 7 p.m.	26  Mann Family Engagement Night 5:30 p.m.  Coolidge PTA Glow Dance 6 p.m.  Wilson Musical 6:30 p.m.	27	28
29	30	31  Tri-M Honor Society Induction 7 p.m.  Third Installment of Property Taxes Due		<b>Attendance Fact</b> Did you know that missing just <b>30 minutes of school per school day</b> adds up to <b>4 weeks</b> of missed learning each year? Over the course of a child's school career, that's <b>nearly one and a half years</b> of school missed!	<div style="border: 2px solid black; border-radius: 20px; padding: 10px; text-align: center;"> <p><b>Early Dismissal Times for March 4</b></p> <p>All Elementary Schools - 10:50 a.m. Middle Schools - 11:30 a.m. <i>(Lunch will be available)</i></p> </div>	



**Ellie Carpenter - Gr 3 - Jefferson**

MARCH 2026  
 S M T W T F S  
 1 2 3 4 5 6 7  
 8 9 10 11 12 13 14  
 15 16 17 18 19 20 21  
 22 23 24 25 26 27 28  
 29 30 31

# 2026 April

MAY 2026  
 S M T W T F S  
 1 2  
 3 4 5 6 7 8 9  
 10 11 12 13 14 15 16  
 17 18 19 20 21 22 23  
 24 25 26 27 28 29 30  
 31

Sunday	Monday	Tuesday	Wednesday	Thursday	Friday	Saturday
<b>Attendance Fact</b> Did you know that missing <b>three days of school each week</b> adds up to <b>24 full weeks</b> of missed learning each year? Over the course of a child's school career, that's <b>nearly eight years</b> of school missed!			1  WMS Musical 6:30 p.m.  Passover Begins at Sundown  First Day of Autism Awareness Month	2	3  <b>Spring Recess            Schools Closed</b>  Good Friday	4
5	6	7	8	9	10	11
Easter Sunday	National Assistant Principal Week	<b>Spring Recess Schools Closed</b>			Third Marking Period Ends (MS/HS)	
12	13	14	15	16	17	18
Orthodox Easter	Fourth Marking Period Begins (MS/HS)  Yom HaShoah Begins at Sundown  Thomas Jefferson's Birthday	<b>Kindergarten Registration Week</b>				
			Coolidge PTA Science Fair 6 p.m.			
19	20	21	22	23	24	25
	BOE Meeting 7 p.m.	<b>NYS ELA Test: Grades 3-8</b>			BHS Spring Dance Show 7 p.m.  Report Cards Mailed Home/ Available via Parent Portal (MS/HS)	
			Math and Science Honor Societies Induction 7 p.m.			
26	27	28	29	30		
	<b>IB EXAMS</b>			WMS Dance Show 6:30 p.m.  BHS Battle of the Bands 7 p.m.		



**Olivia McKan - Gr 11 - BHS**

APRIL 2026  
 S M T W T F S  
 1 2 3 4  
 5 6 7 8 9 10 11  
 12 13 14 15 16 17 18  
 19 20 21 22 23 24 25  
 26 27 28 29 30

# 2026 May

JUNE 2026  
 S M T W T F S  
 1 2 3 4 5 6  
 7 8 9 10 11 12 13  
 14 15 16 17 18 19 20  
 21 22 23 24 25 26 27  
 28 29 30

Sunday	Monday	Tuesday	Wednesday	Thursday	Friday	Saturday
<b>Attendance Fact</b> Did you know that missing <b>one hour of school per school day</b> adds up to <b>eight weeks</b> of missed learning each year? Over the course of a child's school career, that's <b>over two and a half years</b> of school missed!					1 First Day of Asian-Pacific Islanders Heritage Month  National School Principals Day  National School Lunch Heroes Day	2   SAT Test
3	4	5	6	7	8	9
<b>AP EXAMS and IB EXAMS</b>						
	Teacher Appreciation Week  BOE Meet the Candidates WMS - 5:30 p.m.  Horace Mann's Birthday	BOE Meeting & Public Budget Hearing 7 p.m.	Jefferson Spring Concert 5:30 p.m. Coolidge Spring Picture Day National School Nurse Day	Franklin Spring Concert 6 p.m.  National Honor Society Induction 7p.m.		
10	11	12	13	14	15	16
<b>AP EXAMS and IB EXAMS</b>						
Mother's Day	BHS Spring Orchestra Concert 7 p.m.	<b>NYS Math Test: Grades 3-8</b>		MacArthur Spring Concert 6:30 p.m.  BHS Spring Vocal Concert 7 p.m.		
17	18	19	20	21	22	23
<b>IB EXAMS</b>						
	BHS Band Showcase Concert 7 p.m.	NYS Science Test: Grades 5-8 EMS Spring Concert and Art Show - 6:30 p.m. School Board Election & Budget Vote 11 a.m. - 8 p.m. (Various locations)	Jefferson Art Show 5:30 p.m. Coolidge Spring Concert 6:30 p.m. Wilson Spring Concert - 6:30 p.m. Special BOE Meeting 8 p.m. to certify vote	Roosevelt Spring Concert and Arts Night 5:30 p.m.  Mann Spring Concert 6:30 p.m.  Shavout Begins at Sundown	Memorial Day Weekend No School	
24	25	26	27	28	29	30
31	Memorial Day No School	Eid al-Adha	A Taste of Broadway 7 p.m.  MacArthur Little Pats Night Out 6 p.m.	Calvin Coolidge PTA Career Day		



MAY 2026  
 S M T W T F S  
 1 2  
 3 4 5 6 7 8 9  
 10 11 12 13 14 15 16  
 17 18 19 20 21 22 23  
 24 25 26 27 28 29 30  
 31

# 2026 June

JULY 2026  
 S M T W T F S  
 1 2 3 4  
 5 6 7 8 9 10 11  
 12 13 14 15 16 17 18  
 19 20 21 22 23 24 25  
 26 27 28 29 30 31

Sunday	Monday	Tuesday	Wednesday	Thursday	Friday	Saturday
	1 First Day of LGBTQ+ Pride Month	2 MacArthur Student Recital 6:30 p.m.	3 Senior Awards Night 7 p.m.	4 Mann Musical 6:30 p.m.	5 WMS Field Days	6 SAT Test
7	8	9-10 Regents Exams		11 Mann Jam Calvin Coolidge PTA Ice Cream Social 5 p.m.	12 MacArthur Field Days	13 ACT Test
14 Flag Day	15	16	17-18 Regents Exams		19 Juneteenth No School	20
21 Father's Day	22	23	24	25 Ashura Begins at Sundown	26 Graduation Rehearsal Third Trimester Ends (Elem.) Fourth Marking Period Ends (MS/HS)	27
28 BHS Graduation	29 Report Cards Mailed Home/ Available via Parent Portal (MS/HS)	30			<p>Want to learn more ways to help your child build good attendance habits?</p>  <p>Scan here for tips and resources from Attendance Works!</p>	



Izzy Ladd - Gr 12 - BHS

# 2026 July

SUN	MON	TUES	WED	THURS	FRI	SAT
			1	2	3	4 Calvin Coolidge's Birthday Independence Day
5	6	7	8	9	10	11 ACT Test
12	13	14	15	16	17	18
19	20	21	22	23	24	25
26	27	28	29	30	31	

# 2026 August

SUN	MON	TUES	WED	THURS	FRI	SAT
						1
2	3	4	5	6	7	8
9	10	11	12	13	14	15 SAT Test
16	17	18	19	20	21	22
23	24	25	26	27	28	29
30	31					



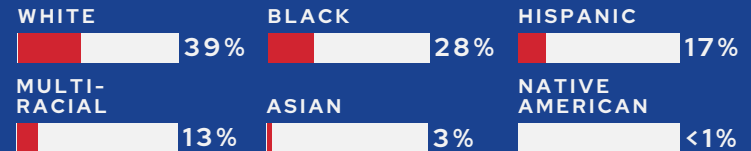
2025-2026

# Binghamton City School District

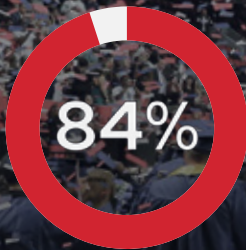
BY THE NUMBERS

## 4,693 STUDENTS

1,252 HIGH SCHOOL • 986 MIDDLE SCHOOL • 2,158 ELEMENTARY • 297 PRE-K



### GRADUATION RATE FOR CONTINUOUSLY ENROLLED STUDENTS



2025-2026 BCSD BUDGET  
\$ 1 5 4 , 5 5 9 , 9 8 7

### PROGRAMS ON OFFER

- CHALLENGE ENRICHMENT PROGRAM
- INTERNATIONAL BACCALAUREATE PROGRAM
- P-TECH PROGRAM
- CAREER & TECHNICAL EDUCATION
- ROD SERLING SCHOOL OF FINE ARTS
- COLLEGE COURSES OFFERED THROUGH:
  - SUNY BROOME
  - BINGHAMTON UNIVERSITY
  - ROCHESTER INSTITUTE OF TECHNOLOGY

### STUDENT LIFE

- STUDENT GOVERNMENT/AMBASSADORS OFFERED AT ALL LEVELS
- 75+ CLUBS ACROSS ALL SCHOOLS
- MUSICAL INSTRUMENT INSTRUCTION STARTS AT 3RD GRADE
- DANCE PROGRAM OFFERED AT ALL LEVELS
- SCHOOL ATHLETIC TEAMS STARTING IN 7TH GRADE
- PARENTS AND CHILDREN TOGETHER PROGRAM

ACCREDITED THROUGH  
MIDDLE STATES  
COMMISSIONS ON  
ELEMENTARY AND  
SECONDARY SCHOOLS



NAMED A  
BEST COMMUNITY FOR  
MUSIC EDUCATION  
BY THE  
NAMM FOUNDATION



BINGHAMTON HIGH  
SCHOOL NAMED A  
PROJECT LEAD THE  
WAY DISTINGUISHED  
PROGRAM



### COUNTRIES

62 REPRESENTED

### FINE ARTS

60 PERFORMANCE GROUPS

### ATHLETICS

68 TEAMS OFFERED

### PRE-K & TK

TK & FULL-DAY PRE-K FOR 3 & 4 YEAR-OLDS

### CLASSROOM SIZE

13:1 STUDENT-TEACHER RATIO

### TECHNOLOGY

1:1 STUDENTS PER DEVICE



Our mission is to provide a supportive, safe and engaging school environment that embraces each and everyone to **BELIEVE** in themselves, to **BELONG**, and to **BECOME** successful.



LEARN MORE AT [BINGHAMTONSCHOOLS.ORG](http://BINGHAMTONSCHOOLS.ORG)

# Quality Teaching & Learning

## Volunteer/Mentor Program

**Mary Ann Dorner, 607-762-8100 ext. 313**

The Binghamton City School District invites parents, guardians and community members to share their time, knowledge and expertise with students. Mentors and volunteers enrich the educational program and strengthen our schools' relationships with businesses, public agencies and institutions. The education of our youth requires a community effort. Caring members of the community bring new energies and resources into the schools and expand the classroom walls. These include:

- ◆ Mentoring/tutoring individual students
- ◆ Working with small groups
- ◆ Shadowing a teacher, regular classroom assistance
- ◆ Providing clerical, library, lunch time, computer assistance
- ◆ Participating with special education or ESOL classes

Volunteers donate their time and energy to assist administrators, teachers, and other school personnel in implementing various phases of school programs.

Mentors donate their time and talents interacting with students and providing them with guidance and advice about how to best succeed in school, college, and beyond.

The district's volunteering/mentoring policy (#9170) and applications are available on the district website at [www.binghamtonschools.org](http://www.binghamtonschools.org).

## Interpreter Services

The Binghamton City School District will provide interpreter services, at no charge, to parents or persons in parental relation who are hearing impaired to enable them to attend school meetings or activities that relate to their child's educational program. Parents or guardians are asked to submit a written request to the building principal for interpreter services at least five school days before the meeting or activity.

## Pre-kindergarten

**Scout Orr, Director 607-762-8197**

The prekindergarten program is free and open to all children who live in the City of Binghamton and will be 4 years old by December 1. Classes are held Monday through Friday, September through June, following the Binghamton City School District calendar. No transportation is provided.

Children participate in a variety of activities and experiences, learn how to express their feelings and ideas, and develop positive relationships with others to build a strong foundation for kindergarten.

## PACT Program

**Mary Ellen Lollie, Program Coordinator 607-762-8144 or 607-762-8197**

**Shannon Walker, Director of Early Childhood - Gr. 12; Humanities; ENL; 607-762-8100 ext. 321**

Parents And Children Together (PACT) is a free parent support and education service for interested families with children from prenatal through kindergarten who live in the district attendance area. Located at Benjamin Franklin Elementary School, PACT is a "school readiness" program that provides research-based current information on parenting, literacy and brain development. PACT is a home visiting program in which certified parent educators visit homes anywhere from a monthly to weekly basis.



## Reporting Feeling Unsafe

New York State's Dignity for All Students Act (The Dignity Act) seeks to provide the State's public elementary and secondary school students with a safe and supportive environment free from discrimination, intimidation, taunting, harassment, and bullying on school property, a school bus and/or at a school function. No student shall be subjected to harassment by employees or students on school property or at any school function; nor shall any student be subject to discrimination based on a person's actual or perceived:

- |                  |                     |
|------------------|---------------------|
| -Race            | -Religion           |
| -Color           | -Religious Practice |
| -Weight          | -Disability         |
| -National Origin | -Sexual Orientation |
| -Ethnic Group    | -Gender/Sex         |

You can visit the New York State Education Department website or contact your child's principal for more information.

## Binghamton City School District Office of Special Services

**Tia Rodriguez and Velvet Tanner, Directors of Special Education, 607-762-8136**  
**Joann Willis, CPSE Chair 607-762-8136**

The district accepts the responsibility to challenge all students to reach their fullest potential. Special education services are provided to students with disabilities to support the knowledge, skills and attitudes necessary to become responsible citizens. The Binghamton City School District Special Education Department provides a rich and accommodating curriculum and a range of services for students based on individual need.

Students receiving special education services are expected to meet high educational standards. For most students with disabilities, that means participating in general educational classes, state assessments and earning a diploma. For students with severe disabilities, standards-linked curriculum and alternate assessments are provided to monitor progress. For students with disabilities whose needs cannot be met within the district, BOCES, private programs or residential placements are recommended.

## Screening for Special Needs through a Multi-Tiered System of Supports (MTSS) Framework

At the Binghamton City School District, we use a Multi-Tiered System of Supports (MTSS) framework to assist educators in identifying and supporting students who may require additional assistance. MTSS is not a direct referral to special education as students are regularly screened throughout the year and may receive additional support tailored to their individual needs through a Multi-Tiered System of Support.

This proactive approach involves providing targeted interventions at multiple levels to address students' academic, behavioral, and social-emotional needs before challenges become more significant. If a student's needs are not adequately addressed through MTSS interventions, it may trigger a referral for a special education evaluation.

# Safety & Facilities

## Visiting our Schools

All visitors shall be required to show identification to school safety and describe the reason for their visit. Visitations to classrooms for any purpose require permission in advance from the building principal in order to allow teachers the opportunity to arrange their schedules to accommodate requests.

Visitors to the schools will be subject to applicable District policies and the applicable Code of Conduct on School Property.

When individual board members visit the schools, they must abide by the regulations and procedures developed by the administration regarding school visits. Education Law Section 2801; Penal Law Sections 140.10 and 240.35; Policy 3210.

## Early Dismissal

Requests for a student's early dismissal from classes must be made in advance by the parent or guardian and must include reason.

## Discipline

When students are not meeting school expectations, school staff and principals respond appropriately, consistently, progressively and work individually with students. When providing redirection, adults intervene in a way that models and teaches the positive behavior desired of all students and adults in the school building. Adults demonstrate care, support and interest in the well-being of the students, even as consequences are put into place to ensure that the discipline is educational. The Code of Conduct describes specific behaviors that are unacceptable at school, and explains the interventions and consequences that will be assigned when a student's conduct does not meet expected standards of behavior.

The policies related to discipline (3410, 3411, 3412, 3420, 7311, 7313, 7314, 7320, 7330, 7340, 7550, 7551, 7552 and 7553), are accessible in BoardDocs. The Code of Conduct is accessible from the district website and available in each school's main office for review by any individual. Contact the main office of each school for additional information.

## Public Access To District Records

Most school district records are available for public inspection and copying in accordance with the public's "right to know" laws. Interested citizens must submit a request to the records access officer, Executive Director of Human Resources and Operations, Eric Wilson, 164 Hawley Street, PO Box 2126, Binghamton, NY 13902. Records can also be inspected in the presence of authorized school personnel during the regular school day. Copies can be obtained at a cost of \$.25 per page.



Scan here  
to view  
BoardDocs



Scan here to view  
the BCSD  
Code of Conduct

## Access to Records - FERPA & HIPAA

The Family Educational Rights and Privacy Act (FERPA), a federal law, requires the district, with certain exceptions, to obtain your written consent prior to the disclosure of personally identifiable information from your child's education records. However, the district may disclose appropriately designated 'directory information,' which includes basic information such as name, weight, grade level, school activities, sports, awards and other recognitions, without written consent, unless you have advised the district to the contrary in accordance with district procedures. Scan the QR code or reach out to your child's principal if you would like to opt out of this practice. Please note that your child's name will not be listed in event programs or award recognitions as a result of opting out.



The district also reserves the right to use photographs of students. However, if you DO NOT want your child to be quoted or specifically identified in district publications or the news media while participating in school activities or programs, scan this code to opt out, or ask your building principal for a "request for non-identification of students" form (Policy 7241).



Parents and guardians have a right to see their child's records and to discuss those records with appropriate school personnel, usually the principal. Discrepancies and inaccuracies can be appealed or rebutted, pursuant to school policy.

The general public is not allowed access to individual student records.

Privacy: The Family Educational Rights and Privacy Act-Buckley Amendment (FERPA a.k.a. Buckley Amendment) is more restrictive than HIPAA with respect to the protection of privacy and security of all health related services. Since all school districts /§4201 schools/counties (and any other educational entities that have access to student data) are obligated to be in compliance with FERPA, they are also HIPAA compliant.

## Military Recruitment

Federal legislation and NYS Education law requires the school district to give military recruiters the same access to information on secondary students as provided to post-secondary institutions and prospective employers. The law also requires that the district give military recruiters, upon request, the names, addresses and telephone listings of secondary students, unless the adult student or parent or guardian of the student requests that such information not be released without their prior written consent. You have the right to request that the school district not release the name, address and telephone listing to military recruiters. If you do not want the school district to release the name, address and telephone listing of your student, please email Michele Gregor at gregorm@binghamtonschools.org. The Binghamton City School District believes that a dynamic interscholastic athletic program is vital to the educational

## Interscholastic Athletics

**Daniel Miller 607-762-8148**

development of our students. Our athletic program provides a variety of experiences for the development of sports skills, physical fitness, a sense of loyalty, teamwork, sportsmanship and respect for others that will prepare student-athletes for success in their adult life. As team members, student-athletes are encouraged to face challenges and develop their leadership skills. The eligibility standards, student conduct and our emphasis on safe participation for our student-athletes keeps Binghamton in the forefront of the state as a model in secondary athletic programming.

Every effort is made to support the athletic program with the best facilities, uniforms and equipment and with the most qualified coaching staff available. Our coaches reflect a sound, positive philosophy while teaching our students in a safe and healthful environment.

Our athletic program is governed by the regulations established by the commissioner of education's "Basic Code for Athletic Activities," the New York State Public High School Athletic Association and our policy for interscholastic athletics.

The opportunity to participate in our sports program is afforded to all eligible secondary students in grades 7-12. There are approximately 300-400 high school and middle school students each sports season participating in the athletic program under the direction of 81 qualified and certified coaches.

On the high school level, there are 27 varsity sports and 15 junior varsity sports. At the middle school level, we offer 21 modified sports.

## Title IX and Section 504

In compliance with United States Law under Title IX and Section 504 "non-discrimination on basis of sex, sexual orientation, race, color, creed, national origin, religion, gender, age, marital status or disability" the Binghamton City School District herewith notifies all parties that it does not discriminate in the educational programs or activities that it operates and that it is required by Title IX and the rules and regulations of the United States Department of Health, Education and Welfare (H.E.W.) not to discriminate in such a manner.

Inquiries concerning Title IX and the rules and regulations of H.E.W. may be referred to Dawne Anna Adams, Dir of personnel or Eric Wilson, Exec. Dir of Human Resources and Operations, 164 Hawley Street, Binghamton at (607) 762-8100. Inquiries concerning the application of Section 504 may be referred to Velvet Tanner or Tia Rodriguez, Directors of Special Services, at (607) 762-8136. Inquiries concerning Title IX or Section 504 may also be referred to the U.S. Department of Education, Office of Civil Right, 10 Metro Tech, 625 Fulton Street, 7th Floor, Brooklyn, NY 11201; telephone (718) 488-3550.

# Transportation-Food Program-Attendance

## Transportation

**First Student: 607-723-7971**

**BCSD Transportation: 607-762-8818**

**BC Transit: 607-763-4464**

**BC Transit Bus Schedules: 607-778-1652**

Binghamton contracts with First Student and Broome County Transit to provide transportation for approximately 2,500 students to and from public, private and parochial schools. School buses are also used for field trips, athletics and music groups.

Under state law, parents who want transportation for their children to private and parochial schools must request transportation by April 1 of each year. New residents who move into the district must submit a transportation request within 30 days.

The district will continue to transport eligible BCSD students using the following distance requirements:

1 mile for K through grade 5

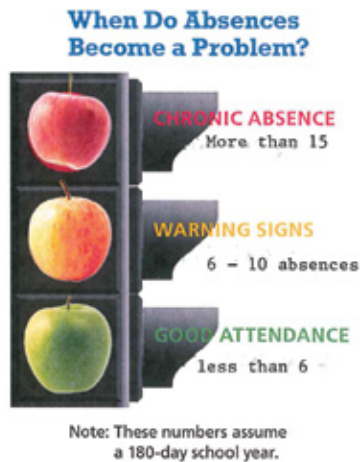
1-1/2 miles for grades 6 through 8

2 miles for grades 9 through 12

It is important that students learn their bus route number, carry their bus pass/student ID and arrive early to their bus stop. Students who walk to school can find the preferred walking maps on the transportation page of the district website.

## School Bus Behavior

It is important that students obey the bus rules for behavior. The school bus driver is charged with the important task of transporting children safely to and from school. Unruly and disruptive riders jeopardize safety for all with their distractions. The district will enforce bus rules to the point of removing unruly passengers, if necessary. Routes are available on the district website and at your child's school.



## Food Services

**Steve Klock, Director**

**607-762-8120**

The food service division of the district provides wholesome, well-balanced, nutritious meals for all students.

All BCSD schools offer breakfast and lunch at no cost to all students regardless of income.

Each middle school has its own cooking facilities and offers a wide variety of choices each day. BHS facilities include a food court consisting of a deli, salad bar, pizzeria and an assortment of hot lunches offered daily.

Meal menus will be available online at myschoolmenu app, on the website [www.rockoncafe.com](http://www.rockoncafe.com) and on the district website. Programs are available for students with special dietary needs.



## Attendance

Regular and prompt attendance is expected of all Binghamton students. The district expects parents to contact the school promptly if their child is absent AND provide an explanation for the absence. Attendance should be reported through SafeArrival in one of the following ways; through the SchoolMessenger mobile app, website ([go.schoolmessenger.com](http://go.schoolmessenger.com)) or toll-free number 1-844-282-8298.

Illegal school absences result in a loss of instruction for the child. Illegal absences and repeated tardies are also entered into the student's record (Policy 7110).

## Registration

**607-762-8114**

Students entering Binghamton City Schools for the first time must register. Students entering Binghamton City Schools for the first time must register via online at [BinghamtonSchools.org](http://BinghamtonSchools.org) or at the Office of Attendance and Pupil Services at 98 Oak St.

If you move: If you are moving out of the district, it is the parent's responsibility to notify your child's school of your new address and the date you are moving. If you are moving within the district, you need to go to the Office of Attendance and Pupil services at 98 Oak Street and provide proof of your new address. If you move within the district, your child may be required to attend another school as a result of your move.



Scan here to view  
Registration  
Information

## Delays & School Closings

School closings, delayed openings and early dismissals due to poor weather conditions will be broadcast on all major radio and TV stations, as well as our website at [www.binghamtonschools.org](http://www.binghamtonschools.org) as soon as the information is available.

The district's automated voice message system will call the home telephone number we have on file for each student. Please be sure to have current and accurate information on file.

If more than the allotted weather-related closings occur during the school year, the extra days are taken in the following order of priority:

**March 13, May 22, April 10.** This ensures that children will attend school for a minimum of 180 days, the legal requirement.

Be certain that you have made arrangements for child care in the event of school delay or closing.

# District Mission & Vision

## Binghamton City School District Mission

Our mission is to provide a supportive, safe and engaging school environment that embraces each and everyone to believe in themselves, to belong, and to become successful.

**Vision:** Our vision is to be the district of choice for children and families seeking an equitable educational experience where students are the focus, individual needs are supported, and a wide variety of opportunities are provided by an engaged and passionate school community committed to the success of each child.

## District Values:

- ◆ Focus on students in every decision we make.
- ◆ Ensure that all children and families are included and engaged.
- ◆ Act with integrity and work collaboratively with all members of the school community.
- ◆ Commit to providing multiple pathways to success.
- ◆ See in children what they have yet to see in themselves.
- ◆ Provide students with opportunities for their voices to be heard.
- ◆ Take collective responsibility for the success of each child.

## District Commitments

**Academic and Instructional Excellence** - We will provide a continuum of academic pathways that meet students where they are and support their diverse interests and needs in order to meet or exceed grade-level expectations.

**Supportive Environment** - We will create a learning and working environment where each and everyone feel valued and can accomplish tier best work.

**The Student Experience** - We will provide each and every student with opportunities to engage in a wide variety of school experiences including academic, extracurricular (fine arts, athletics), and community-based activities.

**Safety** - We will create an environment where students, staff, and families feel physically and emotionally safe.

Help Your Child Succeed in School

## Build the Habit of Good Attendance Early

School success goes hand in hand with good attendance!

## What you can do

- Set a regular bedtime and morning routine
- Lay out clothes and pack backpacks the night before
- Find out what day school starts and make sure your child has the required shots
- Introduce your child to his/her teachers and classmates before school starts to help him/her transition
- Don't let your child stay home unless he/she is truly sick
- If your child seems anxious about going to school, talk to teachers, school counselors, or other parents for advice on how to make him/her feel comfortable and excited about learning
- Develop back-up plans for getting to school if something comes up. Call on a family member, a neighbor or another parent.
- Avoid medical appointments and extended trips when school is in session.

For more on school readiness, visit [attendanceworks.org](http://attendanceworks.org) and [reachoutandread.org](http://reachoutandread.org)

1 or 2 days a week doesn't seem like much but...

If your child misses...	That equals...	Which is...	And over 13 years of schooling that's...
1 day every 2 weeks	20 days per year	4 weeks per year	Nearly 1 ½ years
1 day per week	40 days per year	8 weeks per year	Over 2 ½ years of school
2 days per week	80 days per year	16 weeks per year	Over 5 years
3 days per week	120 days per year	24 weeks per year	Nearly 8 years

How about 10 minutes late a day? Surely that won't affect my child?

He/she is only missing just...	That equals...	Which is...	And over 13 years of schooling that's...
10 mins per day	50 mins per week	Nearly 1 ½ weeks per year	Nearly ½ year
20 mins per day	1 hr. 40 mins per week	Over 2 ½ weeks per year	Nearly 1 year
30 mins per day	Half a day per week	4 weeks per year	Nearly 1 ½ years
1 hour per day	1 day per week	8 weeks per year	Over 2 ½ years

EVERY DAY COUNTS

If you want your child to be successful at school then, YES, attendance does matter!



Scan here to view BCSD District Maps

# Health Services

**607-762-8145 or 607-762-8148**

Please visit [www.binghamtonschools.org](http://www.binghamtonschools.org) for downloads of health service forms

## Immunization Requirements

Proof of all immunizations is required for all new students enrolling in a Binghamton school. Under section 2164 of the NYS Public Health Law, all children enrolling in and attending a school, a day care center or any preschool program must be immunized against diphtheria, tetanus, pertussis, polio, measles, mumps, rubella, hepatitis B, varicella, pneumococcal conjugate, and haemophilus influenza B. Minimum requirements depend upon your child's age and when they began the series of the particular vaccine.

The NYS Department of Health regulations may require children in ALL grades to have additional immunizations in order to attend school. Your building school nurse-teacher/school nurse will contact you by letter if your child needs further documentation of having received the required vaccines.

These requirements are set by the advisory committee for immunization practices (ACIP) and are available online by scanning this QR code.



## Weight Status Category

Weight status category reporting is now required for all school districts in New York state. Data is reported anonymously using only numbers, not student names. If you do not wish to have your child's weight status group information included as part of the health department's survey this year, you will need to provide a request in writing to your child's building school nurse.

## Medical Excuse/Home Teaching

**607-762-8145**

The district will provide home-bound instruction to students who will be absent for an extended period of time when a written statement is submitted by a physician indicating the nature of the illness and the length of time home-bound instruction will be needed. The information will be verified by the school physician/provider. Upon verification, the district will provide up to five hours of instruction weekly to K-5 students and 10 hours of instruction to 6-12 students.

## Emergency Care

School personnel, under the direction of a school nurse-teacher or registered nurse, are responsible for first-aid care of students who are injured or become ill while in school. Accidents of any kind should be reported promptly to the school health office.

Every student is required to have an emergency card on file at the school, with alternate contact information in the event that the parent/guardian cannot be reached in an emergency. Emergency cards are provided to students at the beginning of the school year and are also available from the health office or online on the district webpage under Health Services. Print, complete and sign. \* Note, this is a two-sided form. Print both pages. Please call your child's school if you do not receive one.

## Physical Examinations

A physical examination is required by law for every new student entering school as well as children entering the following grades: Pre-K, K, 1, 3, 5, 7, 9 and 11, as well as students in special education placements. Parents have the option of using their own health care provider, a walk-in clinic or the school's provider. If the physical exam form is not returned by October 1, a school provider physical will be scheduled. Physical exam forms are available online on the district webpage under Health Services.

## Medical Excuses for Physical Education

State Education Law requires all students to participate in physical education. Students who are unable to fully participate in physical education programs will have their programs modified to meet their needs. A form is provided at the beginning of the school year for completion by your child's health care provider. The form indicates what activities can be included in the physical education program modification. It is also available on the district webpage under Health Services. The school nurse may only excuse a student for one day. If a longer amount of time is needed, this must be ordered by a medical provider.



## Administration of Medication

If a child must take any medication during school hours, the school requires:

1. A written request from the parent or guardian.
2. A separate written order from the prescribing health care provider, indicating the name, purpose, frequency and dosage of the medication.
3. All medication is to be dropped off and picked up by the parent/guardian at the beginning and end of the prescription period. (Unless alternate arrangements have been made with the building school nurse/teacher). All medication left at the end of the school year will be discarded according to NYSDOH procedure.
4. All medication must be in the original container. Ask your pharmacist for a second labeled container for medication for school.
5. Forms are also available in each building's school health office or online on the district webpage under Health Services.

## HIPAA

The Health Insurance Portability and Accountability Act of 1996 (HIPAA) requires standards to be adopted in two areas.

1. Electronic health care transactions (include standardizing the manner in which health services are claimed by any entity for any person in receipt of such a service), and
2. Privacy (confidentiality) of all health-related services provided. This involves protection of health information for anyone in receipt of such services.

Electronic health care transactions: Since the Central New York Regional Information Center (CNYRIC) submits all Medicaid claim data to the electronic Medicaid system in New York state (eMedNY) for processing, it is a covered entity under this act. The electronic transmission of Medicaid data is now HIPAA compliant.

## Dollars for Scholars

**Stephanie Lisio, President 607-761-0798**

Binghamton Dollars for Scholars Inc. was founded in 2000 to help Binghamton High School students go to college and trade schools. Every year local volunteers join forces to raise funds, help students with the financial aid process and distribute scholarships. As a chapter of Scholarship America, it has the support and guidance of a national award-winning foundation. Scholarship America has received a four-star rating from Charity Navigator and an A+ rating from America Institute of Philanthropy's charity watch.

Dollars for Scholars is a local organization, which is staffed by community volunteers who raise money through donations from families and businesses in the community. Every penny goes toward scholarships for Binghamton High School students. Scholarship applications are scored anonymously using a point system based on merit and need.

Since it was founded, Dollars for Scholars has awarded over \$500,000 to more than 1,000 Binghamton High School students. Many are now finished with college and are giving back to the Binghamton community. For more information on volunteering or donating, call Stephanie Lisio, 607-761-0798, or email [gomer176@hotmail.com](mailto:gomer176@hotmail.com) or go to [www.binghamton.dollarsforscholars.org](http://www.binghamton.dollarsforscholars.org).

**Use of School Facilities 607-762-6055**

**Use of Athletic Facilities 607-762-8148**

School buildings and other school facilities may be used by outside non-profit groups. However, the use of facilities is subject to restrictions as well as general requirements regarding purpose and insurance. Fees for the use of facilities vary according to the nature of the organization and the purpose.



**Abanoub Atiaa - Gr 4 - Mann**

## Virtual Backpack/Peachjar

The Binghamton City School District uses an electronic flyer communication tool called "Peachjar." This system is exclusively for distribution of school-approved flyers. Parents and guardians will receive these flyers via email or can access them on the district website or district mobile app.



Scan here to view  
Peachjar flyers

## Binghamton City Schools Foundation

[www.binghamtonschoolsfoundation.org](http://www.binghamtonschoolsfoundation.org)

The Binghamton City Schools Foundation was established to enhance the educational experience of students in the Binghamton City School District by providing additional resources to support the curriculum. The foundation awards grants to school district staff members and students who submit proposals for special projects or activities that fall beyond the scope of the district's operating budget.

Since 2008, the foundation has awarded more than \$250,000 to fund 150 unique and innovative projects. One hundred percent of our funding comes from donations. Through the continued generosity of private individuals, corporations and public/private foundations, the Binghamton City Schools Foundation can help make a lasting impact on the educational experience of our students for generations to come.

## Alumni Association

**Contact: 607-762-8100 ext. 300 (message line only)**

The Binghamton City Schools Alumni Association was formed to provide an opportunity for alumni and friends of Binghamton North, Binghamton Central, and Binghamton High School to get together, stay connected to our schools, and preserve their heritage traditions. Most of all, the Alumni Association is about having fun.

The association holds several social events throughout the year, including the well-attended Alumni Picnic, Homecoming Celebration, Fall Reception & Play, and Spring Reception & Musical.

For reunions, the association can arrange tours of BHS or East Middle School, has banners for such occasions and has alumni apparel for sale to support multiple scholarships awarded to graduating seniors.



**Kanye Bragg - Gr 2 - Wilson**

# Resources

## BCSD Community Resource Guide

The Binghamton City School District with numerous community organizations to connect our families with a wide range of resources. Whether its financial services, physical/emotional health, family supports, or one of our in-district community partners, this guide will get you on the path to being connected to address any need to may have.

Scan the QR code to view the BCSD Community Resource Guide



Scan here to view  
BCSD Community  
Resource Guide

## 48 Hour Pesticide Notification

The Binghamton City School District periodically applies pesticides to grounds throughout both the school year and/or summer school.

We are required to maintain a list of all persons who wish to receive a 48-hour prior written notification of pesticide applications at all locations. If you wish to be placed on the list for prior notification of any pesticide applications, please contact us at 607-762-8348.

The Binghamton City School District periodically applies pesticides as part of its IPM (integrated pest management) program. We are required to maintain a list of all persons who wish to receive a 48-hour prior written notification of any pesticide applications. If you wish to be placed on this list, please download and fill out the form linked in the QR Code below and return the form to:

Binghamton City School District  
10 Robinson Street  
Binghamton, NY 13901  
ATTN: Jason Mugglin



Scan here to download  
48-hour pesticide  
notificatin form



Zephyra Hower - Gr 5 - Jefferson



Victoria Mosher - Gr 10 - BHS



Azareya Veasey - Gr 11 - BHS

## Special Education Upon Entry to School

All parents and guardians have the right to refer their child for evaluation to determine eligibility for special education services or programs. As required by New York State law, our district provides this information to families when a child enters our schools—whether or not the child has a known disability.

To help families understand the process, the New York State Education Department offers “A Parent’s Guide to Special Education” available online in both English and Spanish and can be found by scanning the QR codes below. This guide explains your rights, the steps in the evaluation process, and the services available to eligible students ages 3 through 21.

You can view the guide by scanning the QR codes below. For questions or to begin a referral, please contact the New York State Office for People With Developmental Disabilities by calling 866-946-9733 or by sending an email to [info@opwdd.ny.gov](mailto:info@opwdd.ny.gov)



Scan here to view  
A Parent's Guide to  
Special Education  
in English



Scan here to view  
A Parent's Guide to  
Special Education  
in Spanish

## Identification and Recruitment Parent Survey

The Migrant Education Program (MEP) is a free program that provides extra educational services and support to families who have worked in certain jobs—such as farming, fishing, food processing, or logging—within the past three years. Legal status does not affect eligibility.

Students in eligible families may receive services such as:

- Tutoring
- Educational field trips
- Summer learning opportunities
- Parent engagement activities
- Emergency assistance and referrals to local resources

If anyone in your household has recently worked in agriculture, food processing, fishing, or related industries, your child(ren) may qualify.

Scan the QR code below to complete a quick eligibility form. Your answers will help us connect you with available resources and support!

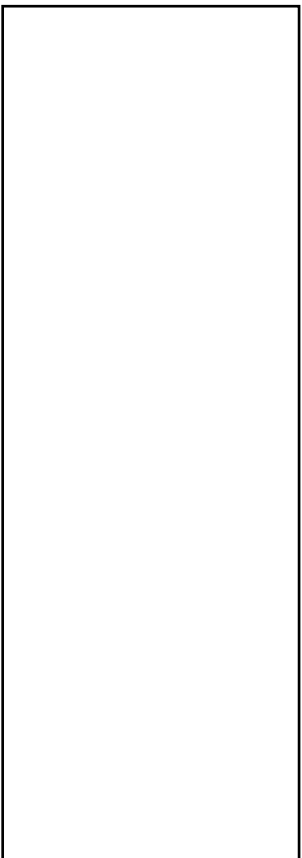


Scan here to complete a  
quick Eligibility Form



Binghamton City School District  
 164 Hawley Street  
 PO Box 2126  
 Binghamton, NY 13902-2126

Non-Profit  
 Organization  
 U.S. Postage  
 Paid  
 Binghamton, NY  
 Permit No. 36



### 2025-26 Calendar at a Glance

Labor Day..... 9/1/2025  
 Superintendent's Conf.... 9/2/2025  
 Superintendent's Conf..... 9/3/2025  
 Columbus Day  
 /ndigenous Peoples Day.... 10/13/2025  
 Veterans Day..... 11/11/25  
 Thanksgiving Break. 11/26-28/2025  
 Winter Break... 12/22/25 - 1/2/2026  
 Martin L. King Jr. Day.... 1/19/2026  
 President's Day ..... 2/16/2026  
 Lunar New Year ..... 2/17/2026  
 Superintendent's Conf... 3/12/2026  
 No School ..... 3/13/26  
 Spring Break ..... 4/3-4/10/2026  
 Memorial Day Weekend.. 5/22-25/2026  
 Juneteenth ..... 6/19/2026  
 Graduation ..... 6/28/2026



Elena Rivers - Gr 9 - BHS

### Regular school hours

Classes	Start	Dismissal
Elementary	7:50 a.m.	- 2:40 p.m.
Middle schools	8:25 a.m.	- 3:25 p.m.
High school	8:00 a.m.	- 3:00 p.m.
Regular office hours		
All school buildings	7:30 a.m.	- 4 p.m.
Central administration	7:30 a.m.	- 4 p.m.

### Alternate Daily Schedules

Elementary Schools	
Early Release Day:	7:50 a.m. - 10:50 a.m.
8:50 a.m. - 2:40 p.m. (One-Hour Delay)	
9:50 a.m. - 2:40 p.m. (Two-Hour Delay)	
10:50 a.m. - 2:40 p.m. (Three-Hour Delay)	
Middle Schools	
Early Release Day:	8:25 a.m. - 11:30 a.m.
9:25 a.m. - 3:25 p.m. (One-Hour Delay)	
10:25 a.m. - 3:25 p.m. (Two-Hour Delay)	
11:25 a.m. - 3:25 p.m. (Three-Hour Delay)	
Binghamton High School	
9 a.m. - 3 p.m. (One-Hour Delay)	
10 a.m. - 3 p.m. (Two-Hour Delay)	
11 a.m. - 3 p.m. (Three-Hour Delay)	



facebook.com/BinghamtonCSD

### 2025-26 School Calendar

website: [www.binghamtonschools.org](http://www.binghamtonschools.org)  
 email: [info@binghamtonschools.org](mailto:info@binghamtonschools.org)



@binghamtoncsd