



ANNUAL REPORT

2022-2023





Clare-Gladwin Regional Education Service District

Dear Community Member:

Clare-Gladwin Regional Education Service District (RESD) has produced this Annual Report to highlight the programs and services provided by our organization. It is by no means an exhaustive report, but it does provide important information to our stakeholders. Whether you are a community member, parent, grandparent, teacher, or potential resident in this beautiful part of Michigan, you need to know what your intermediate school district does for you, your family, your neighbors, and your community. CGRESD receives funding from taxpayers in Clare and Gladwin counties, and we hold ourselves accountable to a high standard of performance and fiscal responsibility to ensure your tax dollars are spent wisely.

About Clare-Gladwin RESD

Created by the legislature in 1962, Clare-Gladwin Regional Education Service District (RESD) is one of 56 intermediate school districts in Michigan.

CGRESD helps the five local school districts in Clare and Gladwin counties with programs and services that are best provided on a regional basis, those that are highly specialized, and those that are more cost-efficient to do together. The RESD helps communities use education resources best by leveraging resources with school districts, higher education, non-profit organizations, and businesses.

The 2022-2023 Annual Report

This Annual Report offers readers insight into the programs and services provided by CGRESD, including programs and services required by state and federal law and those requested by our local school districts. The following sections are included:

- John C. Magnus Center (p.3)
- Business Office (p.5)
- Clare-Gladwin Career and Technical Education (CTE) (p.7)
- SPARKS - Students Participating in Academics and Recreation for Knowledge and Success (p.10)
- Early Childhood and Family Services (p.11)
- McKinney-Vento Homeless Education Consortium (p.14)
- General Education (p.15)
- Pupil Auditing and Transportation (p.19)
- Regional Education Media/Technology Center - REMC 5 (p.20)
- Special Education/Clare-Gladwin Area School (p.21)
- Technology (p.24)

As you read this report and learn more about Clare-Gladwin RESD, please contact us if you have any questions. CGRESD is an important component of the local education system, and we welcome and value your input!

Sincerely,

Tara Mager
Superintendent
tmager@cgresd.net

INVOLVE



We are committed to listening to our community and ensuring that our outgoing communications are clear, concise, honest, and timely.



INFUSE

We are intent on filling our organization with committed, talented professionals who are empowered to maintain a healthy work/life balance through nurturing and support.

INCLUDE



We will foster a sense of community, safety, and well-being among all students, families and staff, respecting diversity and embracing our commonalities.

BOARD GOALS 2022-2025

Board of Education

Susan Murawski, President (Clare)
Jason Pahl, Vice-President (Beaverton)
Lou Adams, Secretary (Farwell)
Sarah Kile, Treasurer (Gladwin)
Rick Foote, Board Trustee (Harrison)

Administration

Tara Mager - Superintendent
Mike Simon- Asst. Superintendent for Special Education
Joe Trommater - Director of General Education
Elizabeth Wood - Area School Principal
Eric Johnson - Career & Technical Education Director
Shay Anderson - Chief Financial Officer
Ken Chinavare - Technology & Operations Director
Barbara Cataldo- Communications Director

Education Partners

Beaverton Schools
Clare Public Schools
Farwell Area Schools
Gladwin Community Schools
Harrison Community Schools
Mid Michigan Community Action Agency
Mid Michigan College
Skeels Christian School

www.cgresd.net

Statement of Compliance with Federal Law: The Clare-Gladwin Regional Education Service District Board of Education complies with all Federal laws prohibiting discrimination and with all requirements and regulations of the U.S. Department of Education. It is the policy of the Clare-Gladwin Regional Education Service District that no person on the basis of race, color, religion, national origin, creed or ancestry, age, gender, sexual orientation, marital status, or disability shall be discriminated against, excluded from participation in, denied the benefits of or otherwise be subjected to discrimination in employment or under any program or activity to which it is responsible, or for which it receives financial assistance from the U.S. Department of Education. For information contact the Superintendent at Clare-Gladwin Regional Education Service District, 4041 E. Mannsiding Rd, Clare, MI 48617 (989) 386-3851.

THE JOHN C.

Magnus Center

John C. Magnus Center

MAGNUS CENTER RENOVATIONS

In early 2013, the family of the late John C. Magnus donated 18 acres of land to Clare-Gladwin RESD to address the need for better facilities to house the Career and Technical Education (CTE) programs chosen by hundreds of local high school juniors and seniors annually. In addition to the donation, the RESD purchased adjacent acreage that was also originally owned by the Magnus family.

Formerly home to Magnus Tractor Sales, the land contained multiple outbuildings, a barn, and a house; many of which had the potential to be utilized to enhance student learning. The RESD partnered with architectural and engineering firms to determine a master plan to be completed in phases as funding was secured. The Rollin M. Gerstacker Foundation of Midland granted the RESD \$100,000 to help fund the expansion.

During the beginning stages of the project, two outbuildings, old foundations, and the back portion of the main building were demolished; several beams and a portion of the barn floor were replaced; a new driveway was constructed to better fit school busses and emergency vehicles; and a new septic field was installed to accommodate future expansion. The local high school juniors and seniors in the CTE Construction Trades program also remodeled the house on the property - now known as Verna's House - to make it handicapped accessible for Clare-Gladwin Area School students to use to practice life skills.

Following passage of the CTE millage in May 2016, the Wilhelm Joseph Magnus Building for Skilled Trades Learning was built, a modest-yet-complete classroom/laboratory that



Construction Trades students officially moved in to the Wilhelm Joseph Magnus Building for Skilled Trades Learning in the Spring of 2018. The building also began housing Automotive Technology in 2019-20.



The Magnus Center's "Green Barn" is now exactly that after Ag Science students renovated the building to more appropriately house their barnyard animals. They also fenced in 17 acres on the property and, in 2020, added a full greenhouse.

allows students the proper space and equipment to become proficient in their fields. The building's construction also gave students a great hands-on look at the project, and it now houses another CTE program, Automotive Technology, as well.

The Auto Tech lab is the result of untold hours of hard work by RESD staff and its community partners, the result of which was a \$1.24 million Marshall Plan Grant from the state of Michigan. Funds from that grant paid for equipping the new lab at the Magnus Center, as well as a complete overhaul of the CTE Auto Lab at Gladwin High School, meaning all Auto students are now hands-on in brand-new state-of-the-art learning environments.



The former Magnus Tractor storefront and repair shop now houses the Agricultural Science classroom and the Health Occupations laboratory.

Students in CTE's Agricultural Science program located at the Magnus Center, occupies a classroom in the

former storefront/repair shop, a renovated barn (where they house several different farm animals), a new greenhouse built in 2020 and 17 acres of fenced property, which provides the animals plenty of room to roam, as well as numerous opportunities for students to study the land.

MAGNUS CENTER EXPANSION COMPLETION EXPECTED FOR FALL 2025

The Career and Technical Education (CTE) is undergoing an expansion project at the Magnus Center. The initiative, expected to be operational in 2025, will include transforming classrooms into specialized labs equipped with state-of-the-art technology. The increased space not only facilitates the incorporation of modern amenities but will also allow for the introduction of new and diverse course offerings.

The expansion will accommodate the relocation of various CTE offices, including work-based learning and counseling services, as well as the Culinary Arts, Criminal Justice, Education Occupations, and Digital Media programs. Currently, the campus is home to Construction Trades, Auto Trades, Agriculture Science, and Health Occupations.

The consolidation positions the Magnus Center as a central hub housing most CTE programs, developing improved coordination and collaboration.



High School Construction Trades students transformed Verna's House into a learning center for Special Education students, giving them a chance to acquire life skills in a non-traditional classroom setting.

VERNA'S HOUSE FOR FUNCTIONAL DAILY LIVING SKILLS

The Area School staff continue to refine and implement "Verna's House for Functional Daily Living Skills" curriculum. As the result of multiple professional development days during the summer of 2015, this innovative plan guides the students in completing tasks in each room of Verna's House based on student ability. These tasks are linked to Michigan's Curriculum and fosters the mastery of functional daily living skills for all students.

The "Verna's House for Functional Daily Living Skills" curriculum, implemented for the 2015-2016 school year, is among the first of its kind in the state. The students who use the house have also been the beneficiaries of generous donations of furniture and other supplies; they also produced a video with Magnus matriarch Verna Green.

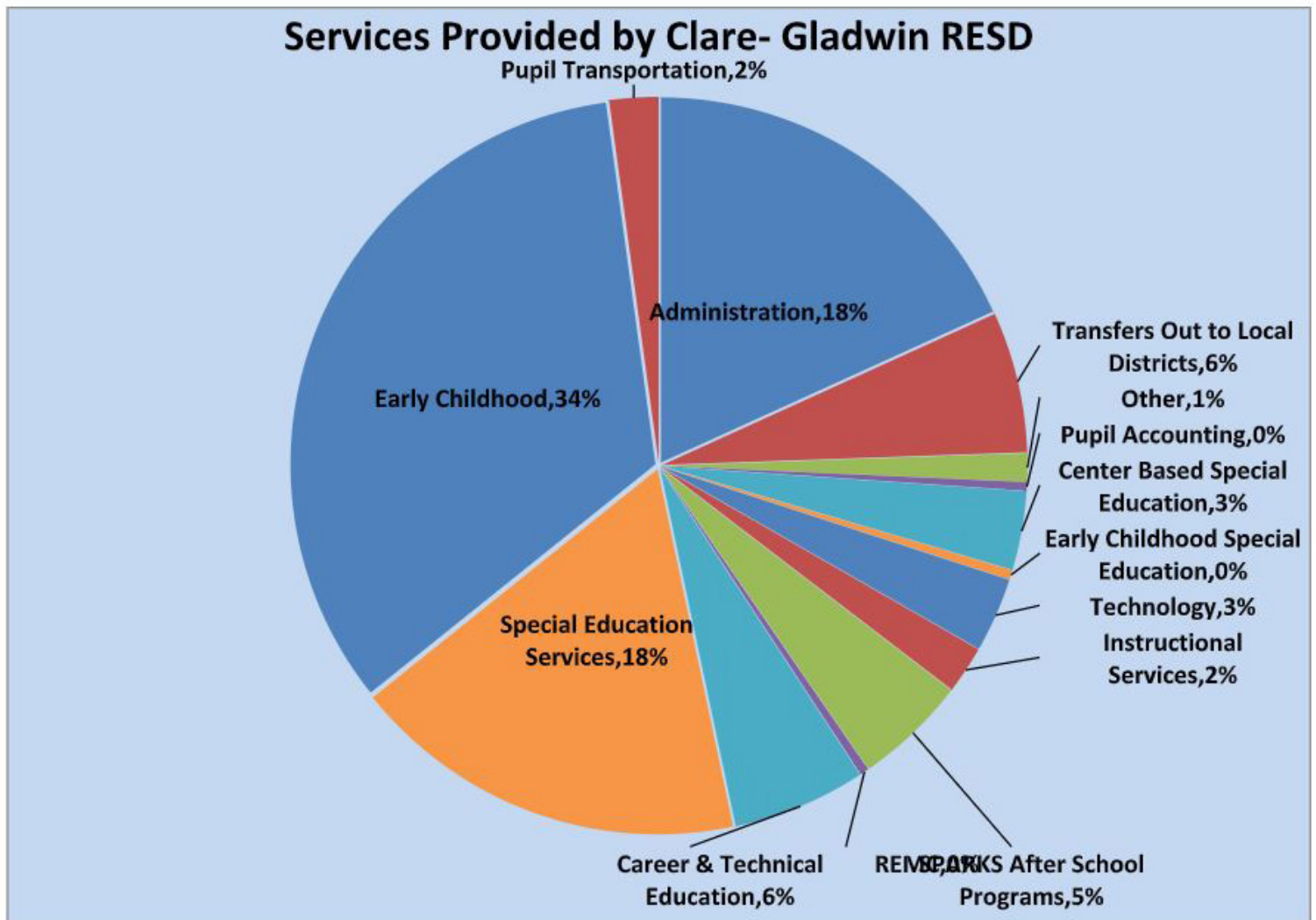
Beginning in fall 2015, the school used Verna's House for students to practice daily living skills such as cooking, cleaning, meal planning and budgeting. The garden project not only enhanced the development of these skills, but also integrated math and science as students plotted the layout of the garden, calculated the number of plants and seedlings needed and researched various vegetables and the effects the weather pattern has on certain crops. The ongoing garden project has benefited from donations of garden soil and plants.

According to CGRESD Special Education Director Mike Simon, an additional benefit of the garden is the opportunity to give back to the community. "The students donate some of the food from the garden to the local food pantries and invite members of the local communities to help with the gardens," he said. "Planting a garden, producing a crop, and sharing the rewards of their work with others give these children a great sense of accomplishment. What better way is there to teach a sense of community while supporting independence than to grow your own food to share?"



Business Office

The primary function of the Business Office is to provide financial support services to the departments within the RESD and consulting services to the surrounding local districts. As the state's financial situation has deteriorated, Business Office services have expanded to providing payroll, accounts payable, budgeting, software procurement and training, and other business services in collaboration with the local districts.



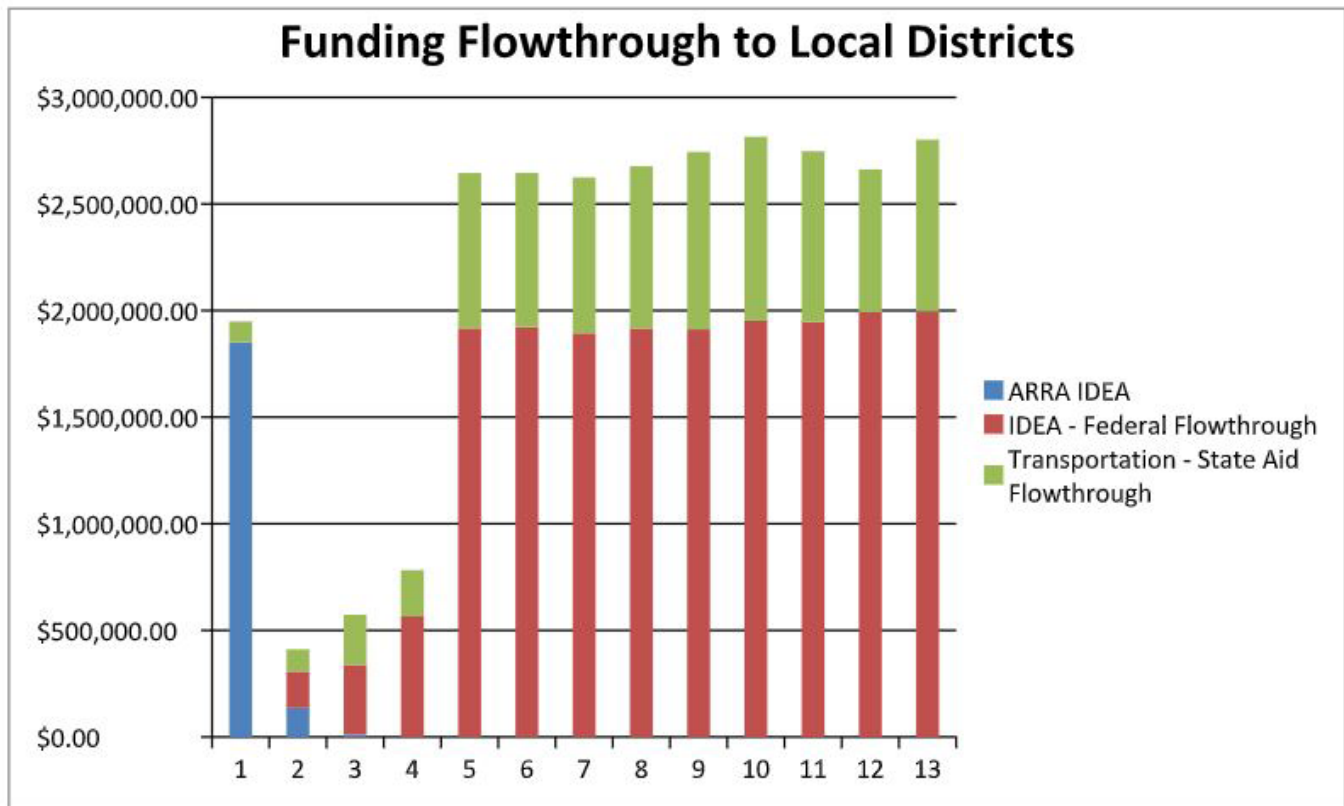
Service Collaboration

The local districts located within the RESD have collaborated on a number of issues such as software support, technology services, substitute teacher contracting, pupil accounting and pupil transportation in addition to special education and career education services that have historically been provided. Above is a chart of services provided by Clare-Gladwin RESD to the students residing in Clare and Gladwin counties, shown as the portion of each program's cost to the district's total costs.



FLOW-THROUGH FUNDS TO LOCAL DISTRICTS IN CLARE AND GLADWIN COUNTIES

Beginning in the 2010 fiscal year, Clare-Gladwin RESD has flowed through funds or added services in order to maximize revenue resources for all districts located within the RESD. The following chart shows the additional funding provided to the local districts from 2010 through 2022.



Support to Local District Business Managers

The business office provides support services to the 5 local districts and to several other districts outside of the RESD. These services include trainings, software support, payroll, and accounting support. The business managers from these districts meet monthly during the school year to discuss current issues relevant to business management services.

Fast Facts: Cost-Cutting/Revenue Raising Measures

- Collaborations/Privatization of services including general education services, custodial services, business services and technology services
- Flowthrough of IDEA funding to maximize state funding for all districts
- Consolidation of Special Education transportation to maximize state funding
- The RESD maintains a Pupil Accounting Consortium with Gratiot Isabella RESD, Midland County ESA, Newaygo RESD, Allegan Area ESA and Mecosta-Osceola ISD

It's Working!



Career & Technical Education

CGRESD offers Career and Technical Education (CTE) classes to high school juniors and seniors from high schools in Beaverton, Clare, Farwell, Gladwin and Harrison.

CTE classes give students experience and skills that can be used to enter the work force right out of high school, as well as opportunities to earn dual and articulated college credit and state or national certifications upon successful completion of the course. All CTE programs also fulfill the Michigan Merit Curriculum (MMC) requirement for the fourth-year math-related course.

It's Working!



	Advanced Manufacturing	Agricultural Science	Automotive Technology	Construction Trades	Criminal Justice	Culinary Arts	Digital Media	Education Occupations	Health Occupations	Welding Technology	TOTALS
Beaverton	1	4	9	10	3	4	4	4	5	12	56
Clare	0	7	6	15	10	9	6	3	9	10	75
Farwell	0	10	13	8	4	10	7	5	8	8	73
Gladwin	13	9	19	14	7	4	7	8	8	10	99
Harrison	2	11	6	3	4	9	12	3	10	9	69
TOTALS	16	41	53	50	28	36	36	23	40	49	372

WORK-BASED LEARNING

WBL gives students the chance to experience potential careers. In 2022-23, **83** CTE students participated in WBL with paid and non-paid work placements. All **372** CTE students benefited from industry mentors, field trips, and job shadow experiences.

STUDENT CERTIFICATIONS

Students can earn industry-recognized certifications through the CTE programs that advance their qualifications for higher education and careers in their field of interest. The table on **page 8** identifies these certifications and how many students achieved them during the 2022-2023 school year.

The Office of Career and Technical Education (OCTE) used this data in 2022-2023 to measure CTE program quality for Automotive Technology, Construction Trades, Welding, and Education Occupations. CGRESD CTE Programs exceeded OCTE's benchmark of a 7% certification rate for those programs! Over the next three years, OCTE will complete the process of selecting approved credentials for the rest of the CTE programs to include as a measure of program quality.

ARTICULATED AND DUAL ENROLLED COLLEGE CREDIT

Articulated credit was granted to students by the listed colleges and universities during 2022-2023 through successful completion of the CTE program in which they were enrolled.

94.7%

of CTE students
graduated from
high school





ADVANCED MANUFACTURING

Articulated Credit:

Mid Michigan College

Work Based Learning: 2

Student Certifications Issued in 2022-23:

NC3 Precision Measurement Instruments: 15

Percentage of Students that Received a Certification: 100%



AGRICULTURAL SCIENCE

Articulated Credit:

Michigan State University

Work Based Learning: 11

Student Certifications Issued in 2022-23:

Youth for the Quality Care of Animals: 40

Percentage of Students that Received a Certification: 97%



AUTOMOTIVE TECHNOLOGY

Articulated Credit:

Delta College

Mid Michigan College

Work Based Learning: 12

Student Certifications Issued in 2022-23:

ASE Entry-Level Brakes: 10

ASE Entry-Level MLR: 21

ASE Entry-Level Suspension & Steering: 2

ASE Entry-Level- Electrical/Electronic Systems: 12

ASE Entry-Level Engine Repair: 2

ASE Entry-Level Heating & Air Conditioning: 2

ASE Entry- Level Manual Drive Train & Axle: 1

Percentage of Students that Received a Certification: 94%



CONSTRUCTION TRADES

Articulated Credit:

Delta College

Work Based Learning: 15

Student Certifications Issued in 2022-23:

60 Hour Builders Pre-Licensure Certificate: 16

Percentage of Students that Received a Certification: 30%



CRIMINAL JUSTICE

Articulated Credit:

Kirtland Community College

Mid Michigan College

Work Based Learning: 9

Student Certifications Issued in 2022-23:

First Aid and CPR / AED Certification: 18

Percentage of Students that Received a Certification: 95%



CULINARY ARTS

Articulated Credit:

Ferris State University

Work Based Learning: 6

Student Certifications Issued in 2022-23:

ServSafe Allergens Certification: 30

ServSafe Foodhandler Training Certificate: 3

ServSafe Manager Food Safety Certification: 23

Percentage of Students that Received a Certification: 62%



DIGITAL MEDIA

Articulated Credit:

Delta College

Ferris State University

Kirtland Community College

Mid Michigan College

Work Based Learning: 8

Student Certifications Issued in 2022-23:

CIW Site Development Associate: 4

Percentage of Students that Received a Certification: 50%



EDUCATION OCCUPATIONS

Articulated Credit:

Delta College
Ferris State University
Mid Michigan College

Work Based Learning: 6

Student Certifications Issued in 2022-23:

Paraprofessional Test: 8
Percentage of Students that Received a Certification: 80%



HEALTH OCCUPATIONS

Articulated Credit:

Ferris State University
Mid Michigan College

Work Based Learning: 10

Student Certifications Issued in 2022-23:

Basic Life Saving: 8
Patient Care Technician: 30
Basic Life Support: 30
Infection Control: 30
Bloodborne Pathogens: 30
Health Insurance Portability and Accountability Act: 30
Medical Ethics: 30
Fraud, Waste, and Abuse: 30
Percentage of Students that Received a Certification: 99%



WELDING TECHNOLOGY

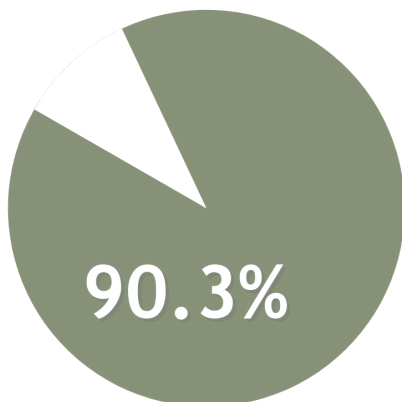
Articulated Credit:

Ferris State University
Mid Michigan College

Work Based Learning: 17

Student Certifications Issued in 2022-23:

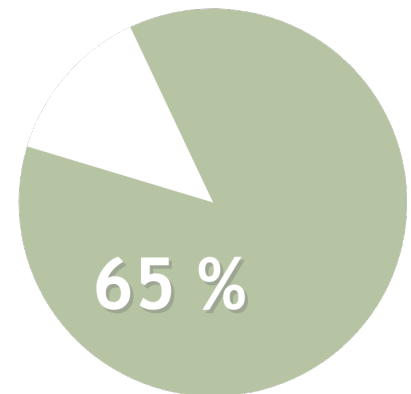
AWS Sense MIG: 23
AWS Sense TIG: 17
AWS Sense SMAW: 11
AWS Sense Flux Core: 4
Percentage of Students that Received a Certification: 28%



Working or
Continuing their Education

POST-COMPLETION INFORMATION

Where are they now? The following graphs include the post-completion data for the 2022 CTE program graduates.



Working or Continuing
Education in a **Related Field to
their CTE Program**

STUDENTS PARTICIPATING IN ACADEMICS AND RECREATION FOR KNOWLEDGE AND SUCCESS

Six school districts partnered with CGRES D during the 2022-2023 school year to provide quality afterschool and summer school programming to students through the 21st Century Community Learning Centers (CCLC) federal grant program, which is dispersed by the Michigan Department of Education. As one of the largest and longest-running 21st CCLC programs in Michigan, SPARKS offers students in the Beaverton, Clare, Coleman, Farwell, Gladwin, and Harrison

districts homework help, tutoring and activities that enhance the regular school day curriculum and focus on the development of character, leadership and college exploration. SPARKS is entering its 22nd year of programming for local school districts. This year, SPARKS collaborated once again with MSU Extension and partnered with the CMU Center for Excellence in STEM, the Chippewa Nature Center, Girl Scouts and community-based organizations within each district.

"I can get homework done and there are a lot of nice people. I like that it is convenient, if you need someone to help, they are always there for homework or for anything you need."

- James (student)

"I think SPARKS has helped my son big time. He's getting his grades up and understands the school work better. SPARKS gave him extra time to do his work and there was somebody there to answer his questions."

- Mary (parent)

EXCELLENCE IN EDUCATION SERVICES

- The SPARKS program has served 7,961 students over the past 21 years.
- On average, students who attend SPARKS have fewer school-day absences compared to similar non-participant students.
- As with attendance, the longer students attend SPARKS, the higher their grade-point average.

7,961

students served
over the past 21
years!





Early Childhood & Family Services

CGRESD understands the importance of the beginning years of a child's life and how they will affect future school preparedness and success. Our dedicated Early Childhood and Family Services staff is committed to providing high quality early childhood programs and services for the children and families in our communities.

PRESCHOOL SERVICES

Quality Preschool Partnership

To ensure an efficient and successful preschool application process for all eligible families served in Clare and Gladwin Counties, Mid Michigan Community Action Agency, Clare United Methodist Church, Harrison Elementary, Beaverton Elementary, and Gladwin Elementary agree to participate in a joint recruitment effort known as the Quality Preschool Partnership (QPP). Eligible children identified through this recruitment process are referred to either the federally-funded Head Start or state-funded Great Start Readiness Programs (GSRP). Every attempt is made to fill all Head Start and GSRP classes prior to the establishment of a waiting list.

In 2022-2023, the Quality Preschool Partnership:

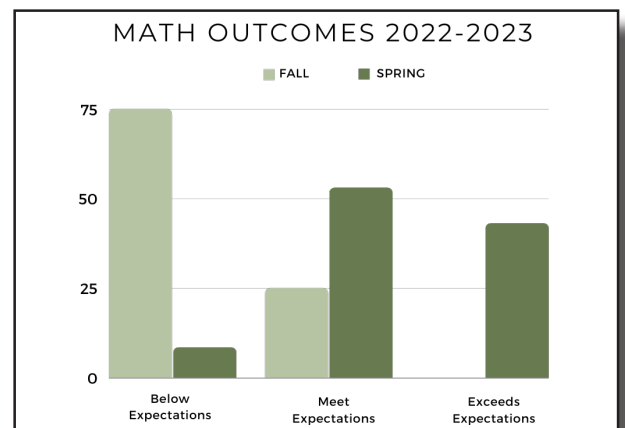
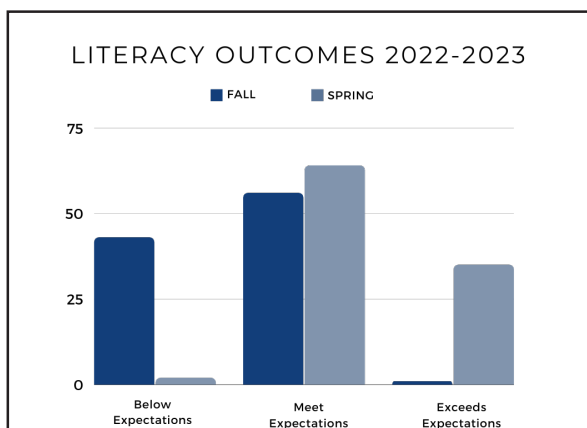
- Processed 620 applications
- 293 children served
- Awarded 436 state funded GSRP slots to:
 - Mid Michigan Community Action Agency (212)
 - Harrison Elementary (98)
 - Gladwin Elementary (90)
 - Clare United Methodist (20)
 - Beaverton Elementary (26)



Child Outcome Data

All GSRP and Head Start programs in Clare and Gladwin Counties utilize Teaching Strategies GOLD to assess each child's development and learning. The tool considers 38 objectives within four major areas of child development: social-emotional, physical, language, and cognitive. The outcomes of these on-going assessments measure a child's readiness as he or she moves toward kindergarten.

Children attending the Great Start School Readiness Preschool or Head Start programs in the 2022-2023 met or exceeded early childhood outcomes expectations in the following areas:





Early Childhood & Family Services



GREAT START COLLABORATIVE AND PARENT COALITION

The Michigan Office of Great Start was created to ensure children birth to age eight have access to high-quality health, early learning, and child care programs so they are safe, healthy, happy, and ready to succeed in school and in life.

This initiative is guided by four desired goals (also known as Early Childhood Outcomes):

1. Children are born healthy.
2. Children are healthy, thriving, and developmentally on track from birth to third grade.
3. Children are developmentally ready to succeed in school at the time of school entry.
4. Children are prepared to succeed in fourth grade and beyond by reading proficiently by the end of third grade.

To help achieve these goals at a local level, every county in Michigan has a Great Start Collaborative - a group of local parents, service providers, business professionals, and community leaders who work together to build and continuously improve the network of supports and services for young children and their families.

Clare-Gladwin Parent Coalition

A partner of the Great Start Collaborative is the Great Start Parent Coalition. The Coalition consists of parents, grandparents, and caregivers who care for children under 12 years of age in Clare and Gladwin Counties. The purpose of the Parent Coalition is to increase parent participation in early childhood planning and decision-making for Clare and Gladwin Counties.

Core Parents

Ten parents from Clare and Gladwin Counties served as Core Parents leaders on early childhood workgroups and boards providing an authentic parent voice that guides local decisionmaking. There are ten parent leaders who are actively engaged in the workgroups in Clare and Gladwin Counties, including:

- Health Improvement Planning
- Clare County Youth Council
- Child Abuse and Neglect Council
- Great Start Collaborative
- School Readiness Advisory Committee
- Great Start Collaborative Executive Committee





Early Childhood & Family Services

2022-2023 HIGHLIGHTS

Each year, the Clare-Gladwin Great Start Collaborative develops and submits a work plan to the Office of Great Start that outlines the goals, objectives, and activities for the upcoming year related to the Early Childhood Outcomes. The following are highlights of the 2022-2023 accomplishments:

Outcome 1: Children are born healthy.

Outcome 2: Children are healthy, thriving and developmentally on track from birth to third grade.

Great Start School Readiness Program

Great Start School Readiness Staff participated in their first professional learning event to start off the 2022-2023 school year. This Pre-Service day focused on the implementation of the up-dated version of Creative Curriculum (6th Edition) which was purchased with additional funding from the Michigan Department of Education during the 2021-2022 program year. This training highlighted the revisions of the curriculum and the implementation of The First Six Weeks study with the children.

Talking is Teaching

Talking is Teaching is a local campaign to increase awareness on the importance of talking, reading, singing and playing with your child from birth. These early connections are the foundation for healthy relationships and future success for the children in Clare and Gladwin Counties. During the summer of 2022 over 100 families visited our Talking is Teaching Storybook Strolls that were located near each of the 5 school districts within Clare and Gladwin Counties. Each month the Parent Coalition put together 150 Talking is Teaching Grab and Go bags that included a book, Talking is Teaching materials, extension activities and materials. These bags are located at the four local libraries, two baby pantries and the health department.

Community Baby Shower - Help Me Grow

Help Me Grow is an annual baby shower for Clare and Gladwin County residents who are pregnant or have children under the age of three years. This year the event was held in person at Mid Michigan College. MyMichigan Health presented on car seat safety, Northern Michigan Alliance for Children presented on safe sleep and Mid Michigan Community Action Agency presented on potty training. Each participant received a diaper bag filled with books, swaddle, a

water bottle and community information. As table decorations the students enrolled in the CGRESD's SPARKS program made stuffed animals and wrote a story to go along with the animal for each participant to take with them. The participants were able to choose an item such as car seat, pack & play, water table, tricycles, strollers and more.

Outcome 2: Children are healthy, thriving and developmentally on track from birth to third grade.

Outcome 4: Children are prepared to succeed in fourth grade and beyond by reading proficiently by the end of third grade.

Imagination Library

Dolly Parton's Imagination Library is an international program organized locally by CGRESD that emphasizes the importance of reading to children during their early years to give them a boost toward a successful education. This program provides children who are under the age of five and residing in the school districts of Beaverton, Clare, Farwell, Gladwin or Harrison with a free, age-appropriate book every month until their fifth birthday. There were 12,239 books distributed during the 2022-2023 school year.

Since the inception of the program in 2007, there have been over 175,000 books distributed in Clare and Gladwin Counties.

Child Care Summer Bundle

In order to support our families in having access to high quality early care and education services, the Great Start Collaborative's School Readiness Advisory committee created Child Care Summer Bundles. Nineteen home and center-based child care providers serving over 300 children in Clare and Gladwin Counties received Talking is Teaching educational materials as well as consumable arts and crafts materials (construction paper, crayons, glue, children's books and resources). These bundles were delivered to each provider.



McKinney-Vento Homeless Education Consortium

The McKinney-Vento Homeless Education Consortium provides services to children and youth experiencing homelessness. During the 2022-2023 school year, 318 children and youth in Clare, Gladwin and Midland Counties, ages 3-20, were supported by this program.

OVERVIEW

The federal law, the McKinney-Vento Act, defines the term “homeless children and youth” as individuals who lack a fixed, regular and adequate nighttime residence. Help is provided to children and youth who are sharing the housing of other persons due to loss of housing or economic hardship; living in alternative accommodations (motel, campground, car, shelters); or are awaiting foster care placement. Parent and/or student rights under the McKinney-Vento Act require immediate enrollment in school even in the absence of previous school records, transportation assistance to the school of origin, free lunch, and academic support to those students who are working below grade level.

School District	Students Served 2022-23
Academic and Career Education Academy	13
Beaverton Schools	20
Bullock Creek School District	24
Coleman Community Schools	23
Clare-Gladwin Area School	4
Clare Public Schools	13
Farwell Area Schools	37
Gladwin Community Schools	9
Harrison Community Schools	80
MCESA	3
Meridian Public Schools	11
Midland Public Schools	57
Windover High School	28
TOTAL	322

The goal of the McKinney-Vento Homeless Education Consortium is to ensure children and youth experiencing homelessness have equal access to the same free, appropriate public education provided to other children and youth. Clare-Gladwin RESD serves as the fiscal agent for this federal grant that provides funds to the Clare, Gladwin, and Midland Counties Homeless Education Consortium. The Consortium is comprised of the public schools and public school academies located in the three counties. Each school appoints a local district liaison who assists children and youth experiencing homelessness in order to eliminate barriers to school attendance and academic success.

Most districts received backpacks and school supplies for those students who were identified as eligible. Additional supports provided included food, clothing, personal care items, transportation to and from school, and assistance obtaining birth certificates and immunization records.



General Education Instructional Services

The General Education Department offers schools within the two-county region a variety of programs and services designed to assist local district teachers and administrators in improving student achievement through the use of research supported practices.

SCHOOL IMPROVEMENT

School improvement planning is a continuous and intentional process through which schools and districts set goals for improvement and make decisions about how and when these goals will be achieved. The ultimate objective of the improvement planning process is to increase student achievement levels by enhancing the way curriculum is delivered and by creating a positive environment for learning.



Clare-Gladwin RESD provides support to local schools and districts through a professional development and technical assistance workshop series that includes:

- Conducting a comprehensive needs assessment
- Developing a school or district data profile
- Researching evidence-based instructional strategies
- Developing a school and/or district improvement plan
- Monitoring and evaluating plan implementation
- Developing principal and teacher leadership

Further support for improvement planning is provided through coordination of professional development for curriculum and instruction, assessment and data support, and instructional technology to align with current school improvement initiatives and needs.



General Education Instructional Services

INSTRUCTIONAL SERVICES/PROFESSIONAL DEVELOPMENT

The General Education Instructional Services department provides professional learning designed to help local districts adjust their systems, practices, and learning environments in ways that will optimize learning. The 2022-2023 school year brought with it many opportunities to support administrators and teachers in new learning around technology integration in the classroom, student engagement, and high-quality instructional practices. The Instructional Consultants at Clare-Gladwin RESD supported administrators and teachers in continuous learning and developing expertise in the following areas:



Data-Informed Decision-Making Practices

- MI-CSI (School Improvement)
- College-Level Examination Program (CLEP)
- Illuminate & Skyward Support
- Illuminate Data and Assessment



Technology Practices for Classroom Implementation

- Enhancing Instruction for All Learners Using Technology
- Google Apps for Education Training
- Google Bootcamp
- Google Classroom Tutorials
- Classroom Technology for Chromebooks
- Experience Discovery Education



Strong Positive Relationships/Student Engagement

- Crisis Prevention Intervention (CPI)
- Conscious Discipline
- Student Engagement and Collaboration Practices
- Book Study; Onward: Cultivating Emotional Resilience in Educators
- Mental Health First Aid



Leadership

- English Learner: District Coordinator Network
- Guided School Improvement for District and School Teams
- Instructional and Literacy Coaches Network
- Principal Network
- School ADvance School Administrator Evaluation Training
- Collaborative Coaching Practices
- Adaptive Schools Training



High Quality Instructional Practices

- Assessment for Teaching and Learning
- Essential Literacy Practices for the K-3 Classroom
- Writing in the Elementary Classroom: Research-Supported Practices
- Literacy Across the Disciplines in the 6-12 Classroom
- Enhancing Math Instruction for Struggling Students
- Middle & High School Math Networks; supporting math discourse in the classroom
- New Teacher Survival and Success
- Number Talks: Promoting Mathematical Discourse
- Implementing Math Workshop in the Classroom
- Math Recovery Training
- Personalized Learning in the Classroom



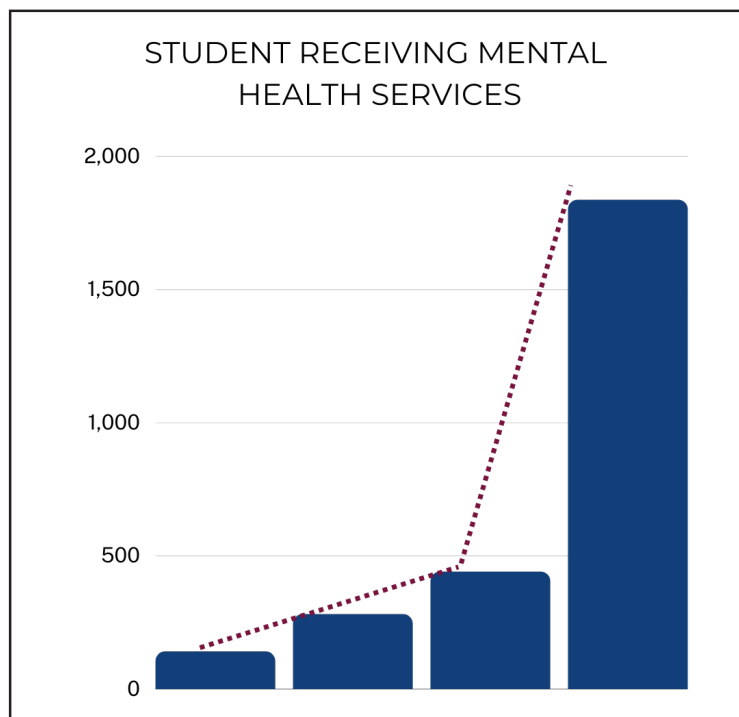
General Education Instructional Services

SYSTEMS OF SUPPORT - STUDENT SOCIAL AND EMOTIONAL WELL-BEING

Supporting the need to educate the whole child while providing resources for students' social, emotional, and behavioral health and well-being has been an area of focus for the Clare-Gladwin RESD for several years. In 2017, the RESD began incorporating a pyramid of support for local districts that included a presentation by Dr. Jim Henry from the Southwest Michigan Children's Trauma Assessment Center. Educators learned how to identify and screen suspected trauma concerns while providing strategies and resources to students in response to those concerns. This work continued to develop in 2018 and 2019 with Restorative Practices training for all local districts featuring renowned speaker and trainer, Roy Burton. Educators were immersed in learning that showcased strategies to build strong, healthy relationships with students, families, clients, employees, and colleagues to take back to the classroom and district. In 2020, the work further developed with two representatives from each district participating in Restorative Practices Circles Training led by the International Institute of Restorative Practices. District representatives were charged with training and supporting classroom teachers and staff in their home district with Restorative Circles strategies and knowledge.

In 2021, the work of supporting the whole child continued to evolve with the RESD receiving and utilizing funding from the School Mental Health and Support Services Grant. The purpose of this funding is to expand the availability of mental health services and supports to K-12 students who are not receiving social work services through an Individualized Education Plan (IEP), as well as to provide appropriate referrals for students in need of more intensive services to the Community Mental Health system. The Clare-Gladwin RESD established partnerships with Community Mental Health and local school districts to provide mental health and behavioral services to students with the intention of expanding existing supports and starting new mental health services in schools where a gap in available resources and a need exists.

The partnership between Community Mental Health, local school districts, and the RESD brings together educational resources and expertise to provide students with services and support to increase their social and emotional well-being. The RESD has laid the foundation of professional learning with continued support and resources to local districts, providing local educators with the tools and strategies needed to support students and families with social, emotional, and behavioral-health.





General Education Instructional Services

USING DATA TO GUIDE INSTRUCTION

The Clare-Gladwin RESD General Education team provides support and guidance to local districts in reviewing their data, implementing strategies in the classroom based on local data, and monitoring student progress and growth after changes in the classroom have been made. Helping guide educators in using classroom data to make informed decisions that positively affect student achievement has been, and will continue to be, a focus for the General Education team. Research has shown that using data to guide instructional practices leads to higher student achievement and growth.



PARTNERSHIPS/COLLABORATIVE PROJECTS

Clare-Gladwin RESD's instructional department partners with various consortia and organizations in order to pool resources and avoid duplication of services. Among others, these include: Great Lakes Bay Instructional Teams, Great Lakes Bay Region STEM Network, General Education Leadership Network, English Language Arts Statewide Leadership Network, Michigan Math Consultants and Coordinators, English Learner Statewide Network, and Michigan School Improvement Facilitators' Network. These partners and organizations help provide the most comprehensive and current information to local districts.

Through a formal agreement with Midland County ESA, Clare-Gladwin RESD provides instructional services to school districts in Midland County, as well as those in Clare and Gladwin Counties, which maximizes expertise and resources for educators in both service areas with similar demographics.

ENGLISH LEARNERS

In an effort to ensure that English Learners (ELs) have access to a high quality education and equal opportunities, Clare-Gladwin RESD continues to support EL needs in Clare, Gladwin, and Midland Counties. This support includes guidance for evaluating implementation and effectiveness of local district programs, along with the English Learner Handbook templates provided to districts to reflect new guidelines from the Michigan Department of Education.

During the 2022-2023 school year a local network was launched for district EL coordinators, which included regional opportunities for communication and collaboration around EL specific needs. The EL Coordinator for the RESD leads this network while continuing to assist districts through WIDA (World-class Instructional Design and Assessment) screening and testing support, monitoring State compliance requirements, and providing guidance for entrance and exit protocols for English Learners.

Clare-Gladwin RESD continues to seek training opportunities for regional educators in order to provide teachers with evidence-based instructional strategies that encourage interaction with the English language and academic content. A partnership with the director of the Mid-Michigan Migrant Consortium led to additional opportunities for general education teachers to participate in training since the 2022-2023 school year. The EL Coordinator for the RESD continues to participate in a statewide network in order to stay abreast of the most recent requirements and opportunities available in order to support the growing population of English Learners in Clare, Gladwin, and Midland Counties.



Pupil Accounting

Pupil Auditing

The CGRESD Pupil Auditing Consortium provided pupil auditing services to the local school districts and public school academies served by Clare-Gladwin RESD as well as Allegan Area ESA, Gratiot-Isabella RESD, Midland ESA, Mecosta-Osceola ISD and Newaygo County RESA.

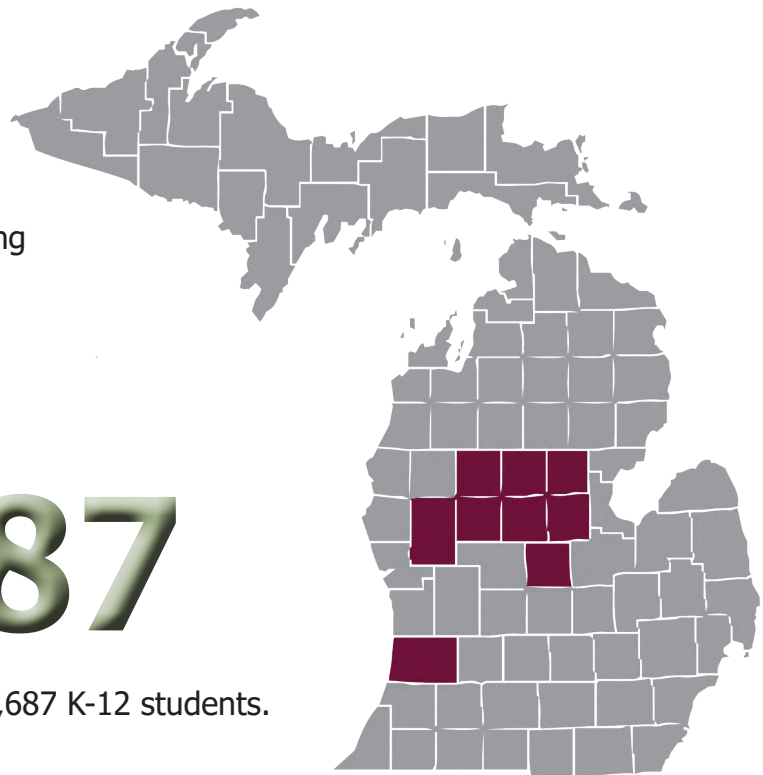
Michigan has established two official student count days during the school year. It is the Pupil Auditing Department's responsibility to audit each local school district's student count and to verify each district has followed the statewide pupil accounting procedures and requirements.

50

In 2022-2023, the CGRESD Pupil Accounting Department audited 50 school districts in Allegan, Clare, Gladwin, Gratiot, Isabella, Mecosta, Midland, Newaygo and Osceola Counties.

57,687

The pupil counts in 2022-2023 totaled 57,687 K-12 students.



Transportation

CGRESD is part of the Northern Michigan Transportation Consortium. Through that consortium, bus drivers and transportation supervisors are trained in safety procedures, interpersonal skills for dealing with students and parents, and new laws governing the transportation of students.



Regional Education/Media Technology Center

REM C 5

REM C 5 provides high quality leadership and services to the educational community in the effective use of media and technology to support teaching and learning.



DISCOVERY EDUCATION STREAMING

REM C purchases the Discovery Education Streaming license for all member schools. This media package includes over 12,000 video titles accessible in full length or over 67,000 segments. Customizable writing prompts, lesson plans, quizzes, articles, learning guides, audio files, images, and more are also available as part of the collection for teachers and students to access. Google sign on to Discovery Education was implemented in 2022-2023 for seamless access to the content.

MOODLE COURSE MANAGEMENT SYSTEM

REM C 5 provides Moodle at no cost to teachers and students in our local districts and to Clare-Gladwin and Gratiot-Isabella RESD instructional teams. Administrative support and training for Moodle is provided by REM C. As more teachers and students transition to the use of Google Classroom, Moodle will be phased out and REM C will assist Moodle users in implementing Google Classroom as an online classroom interface.

MAKER KITS

REM C 5 has STEM aligned maker materials available for teachers to check out for classroom use. The REM C Maker Kit includes 3D printers, programmable robots, electronic construction kits, Keva plank construction sets, and more. REM C provides free training days to allow teachers to explore the maker materials and plan for implementation in the classroom.

PROFESSIONAL LEARNING

REM C provides support to curriculum groups in best practices in utilizing technology. In addition, several workshops are hosted by REM C each year throughout the region and on-site, customized training is provided upon request.

REM C SAVE BID PROJECT SAVINGS:

REM C 5 participates in a statewide program designed to provide school districts with cooperative buying power on a statewide bid of supplies and equipment.

For 2022-2023, estimated savings for CGRES D and our local districts was \$250,131.

REM C PROFESSIONAL LEARNING EVENTS SUMMARY:

- REM C New Teacher Orientation
- In-District Google Apps for Education Sessions
- In-District Technology Integration Sessions
- Advanced Teaching Strategies with Google – presented by John Sowash



Special Education

CGRES D provides special education support services for the five local school districts and one parochial school. Of all those attending school in CGRES D districts, 20% of the students received special education services during the 2022-2023 school year. The state average is 13.51%.

STUDENTS SERVED IN 2022-2023

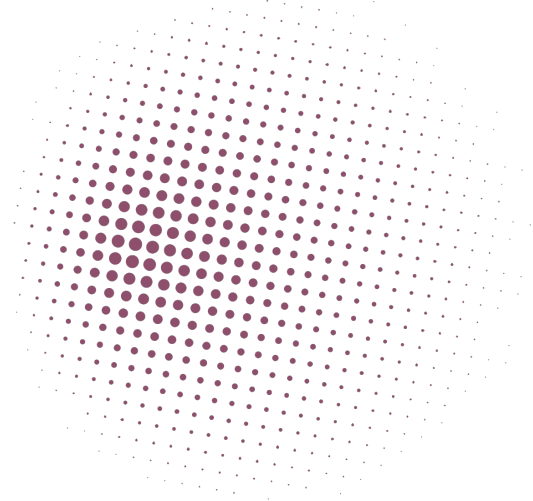
Special Education Students Served by Disability in Clare and Gladwin Counties

Disability	Students
Autism Spectrum Disorder	121
Cognitive Impairment	86
Early Childhood Developmental Delay	16
Emotional Impairment	91
Deaf and Hard of Hearing Impairment	14
Specific Learning Disability	479
Other Health Impairment	118
Physical Impairment	10
Severe Multiple Impairment	13
Speech and Language Impairment	361
Traumatic Brain Injury	2
Visual Impairment	8

BUILD UP MICHIGAN

Build Up Michigan helps locate and identify young children, ages 3 through 5, who may be in need of special education supports and/or services.

- Number of Build Up Michigan Referrals Received: 80
- Number Found Eligible: 47



EARLY CHILDHOOD SPECIAL EDUCATION

Early On provides service coordination and child development information/activities to families with children age birth to three who have a 20% developmental delay and/or medical diagnosis. The purpose of Early On is to support parents to better understand their child's development and to connect families to the resources they need to support their child's developmental needs.

- Number of Early On referrals received: 130
- Number Found Eligible: 72

Students Identified for Special Education

District	# of Students
Beaverton	197
CGRES D	179
Clare	205
Farwell	196
Gladwin	313
Harrison	248



CLARE-GLADWIN AREA SCHOOL

The Clare-Gladwin Area School serves students in Clare and Gladwin counties who are eligible to receive services under the categories of moderate and severe cognitive impairments.

The Clare-Gladwin Area School staff works in collaboration with local districts and families to provide centralized programs and services to students between the ages of 6 and 26.

Students Served at Clare-Gladwin Area School 2022-23

Moderate Cognitively Impaired (MOCI)	25
Severe Cognitively / Severe Multiply Impaired (SCI/SXI)	12
Other Impairments (ASD, HI, VI)	26



The Area School has two primary goals for all of the students who attend; one is that each student be as independent as possible, the other is for each student to have the best quality of life possible. Students work on both academic and vocational skills, as well as participate in work tasks in the community.

VERNA'S HOUSE FOR FUNCTIONAL DAILY LIVING SKILLS

Verna's House is used daily to help develop the functional living skills of our students. Students in several of our classes spend a portion of their day building skills to be independent adults.

The students may work on:

- Cooking
- House Cleaning
- Laundry
- Yard Work
- Gardening



COMMUNITY INVOLVEMENT

Students are involved in a variety of job opportunities within each county. The job sites include:

- Mid-Michigan Community Action Agency
- Harrison Moose Lodge
- Little Caesars of Gladwin
- Brown Corners Church
- Chartwells, Harrison

COMPLETION OF THE AREA SCHOOL PROGRAM

The students who exit the Area School program can enter different programs depending on the county in which they live. With the help of Michigan Rehabilitation Services and Community Mental Health, students may receive services to support employment.

THE YEAR IN REVIEW 2022-2023:

The 2022-2023 school year went by quickly. Below are some of our accomplishments this school year.

- The Area School hired several new staff this year.
 - ◇ Dawn Wiseman MOCI Teacher
 - ◇ Mary Smith SCI Teacher
 - ◇ Josh Higgins SCI Teacher
 - ◇ Michael Raoten Para Educator
 - ◇ Pauline Walsh Para Educator
 - ◇ Kayla Bradford Para Educator
 - ◇ Mia Fetzer Para Educator
 - ◇ Rebecca Umphrey Para Educator
 - ◇ Casey Kelly Para Educator
 - ◇ Janice Peraino Para Educator
- Area School students and staff were able to reach their benchmark goals in both academic and non-academic areas.
- Students had the opportunity to participate in field trips to the following locations:
 - ◇ Discovery Museum, Mt. Pleasant
 - ◇ The Wild Pumpkin, Beaverton
 - ◇ The Canopy Walk, Midland
 - ◇ Ideal Theater, Clare
 - ◇ Planetarium, Bay City
 - ◇ Saginaw Zoo, Saginaw
 - ◇ The Fruitful Orchard, Gladwin
 - ◇ Dairy Queen & City Park, Harrison
 - ◇ SnowBird Lanes, Harrison
- The Area School had one graduate this year, Jacob Beagle. We wish you the best, and will miss seeing your smile everyday!



Overall, the 2022-2023 school year has been a success! We will continue to involve our stakeholders, infuse our organization with committed professionals, and include all, to positively impact the students we work with everyday!



Technology

The Clare-Gladwin RESD Technology Department is committed to planning for, acquiring, deploying and supporting appropriate technology for all of the local districts in an efficient, timely and cost-effective manner.

A GROWING DEPARTMENT

The Technology Department has grown significantly over the years and through collaboration has merged with all the local district technology departments to stabilize operational costs and provide better service. The Technology Department has grown from one person managing just the RESD offices in 2000 to 23 people who manage the technology services at the RESD and all five local school districts.

The 23 staff members responsible for addressing the technology needs of CGRESD and the five local school

districts manage an increasing number of computing devices. All 5 districts are now 1:1 ratio for students.

HELP DESK

The Help Desk provides technology assistance with users submitting requests via the telephone or online. For 2022-2023 the Help Desk received over 11,128 ticket requests and closed over 11,053. On average, tickets are completed within two business days.

School District	# of Devices	Help Desk Tickets
Beaverton Rural Schools	1,314	1,477
Clare-Gladwin RESD	581	621
Clare Public Schools	2,455	3,019
Farwell Area Schools	1,553	1,765
Gladwin Community Schools	2,241	1,829
Harrison Community Schools	1,995	2,313
TOTAL	10,139	11,024

E-RATE FUNDING

In the late 1990s, telecommunications services and the internet became increasingly common and were quickly considered to be valuable tools that enhanced student learning. Recognizing that full access to these services was critical to student success, the federal government developed the Universal Service Administrative Company (USAC) - a federal program that gives annual financial support to a select number of public K-12 schools and public libraries across the country to offset a portion of their internet and telecommunications costs. Commonly known as "E-rate," the program provides entities with discounts of up to 90%. The amount of the discount is based on each district's percentage of students receiving free and reduced meals.

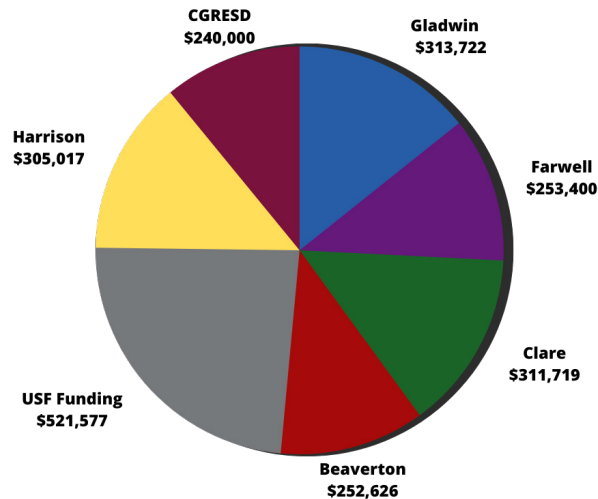
CGRESD, along with the Beaverton, Clare, Farwell, Gladwin and Harrison school districts have been applying for and receiving these discounts since 1998. Funding was awarded again in the 2022-2023 school year for the 22nd consecutive year, saving a combined total of more than \$8 million in internet and telecommunications costs over time.



Technology

TECHNOLOGY CONSORTIUM COST SHARING

The following chart depicts 2022-2023 cost sharing amounts for the partners in the Clare-Gladwin Technology Consortium.



EXCELLENCE IN EDUCATION SERVICES 2022-2023

- Unification of shared technology services for all five local districts for the 17th year since this endeavor was started back in 2006 with one local district and the RESD.
- Continued sharing of Technology Services model for others around the State of Michigan.
- Updated all server operating systems to the latest patches and/or versions (over 150 virtual servers patched).
- Successful management of nearly 11,000 computing devices used by students and staff.
- Updated all UPS (uninterrupted power supplies) firmware in all data closets within all five local districts and the RESD.
- Integrated MFA (Multifactor Authentication) for added security for all districts.
- Beaverton School projects:
 - ◊ Installed new sound systems in the elementary gym and high school cafeteria and gym. Trained staff on use of new systems.
 - ◊ Installed and configured new Track and Field timing system at the athletic field.
 - ◊ Created elementary lockdown room with access to security cameras, phones and public address (PA) system to coordinate with law enforcement during lockdown situations from a secure location.
- Clare-Gladwin RESD Programs:
 - ◊ Added new Chromebook carts at the Area School.
 - ◊ Added door access at the Administration and Area School buildings to strengthen their security posture.
- Clare Public Schools projects:
 - ◊ Added additional security cameras to increase coverage of their existing video surveillance system and enhance their security posture.
- Farwell Area Schools projects:
 - ◊ Applied for USF (Universal Service Funds) on behalf of the district to connect their alternative education building to their main campus and to connect their district to another one for a more resilient fiber network (\$360K awarded between Farwell & Harrison Schools).
 - ◊ Completed the door access system for the entire campus to strengthen their security posture.
- Gladwin Schools projects:
 - ◊ Applied for and received USF funding commitment on behalf of the district to connect fiber between their alternative building to the district's main campus (\$293K awarded).
 - ◊ Installed a security system called Alertus strengthen their security posture.
 - ◊ Added a network/Internet connection to the maintenance garage.
- Harrison Community Schools projects:
 - ◊ Applied for USF (Universal Service Funds) on behalf of the district to connect their district to another one for a more resilient fiber network (\$360K awarded between Harrison & Farwell Schools).
 - ◊ Added additional security cameras to increase coverage of their existing video surveillance system and enhance their security posture.



Technology

FIBER OPTIC NETWORK ENHANCEMENTS

Over the past 14 years, a broadband initiative was developed to help bring internet access to the unserved and underserved portions of Clare County. CGRES D, working with other agencies around the county, connected fourteen entities within three cities to the high-speed fiber optic network originally purchased and installed in the early 1990s by CGRES D, local districts and Mid Michigan College. Other collaborative partnerships with both private and governmental entities are continuously being studied. The participating entities, including all four libraries in Clare and Gladwin counties, benefit from being connected to the school fiber network by having access to increased bandwidth at a reduced cost.

CGNET FIBER RING

Revised: 04/02/2018

