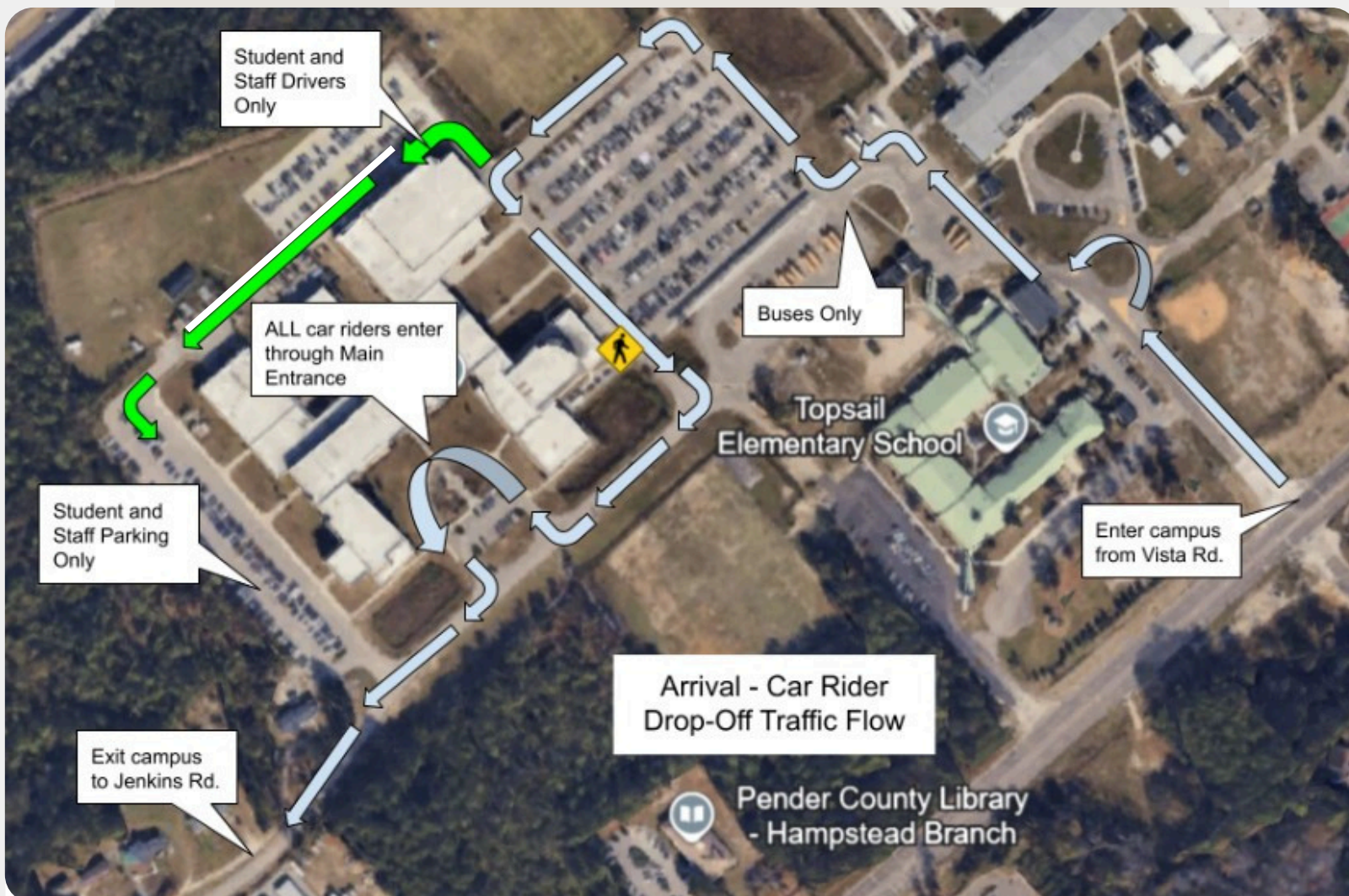


# TOPSAIL CAMPUS ARRIVAL AND DISMISSAL

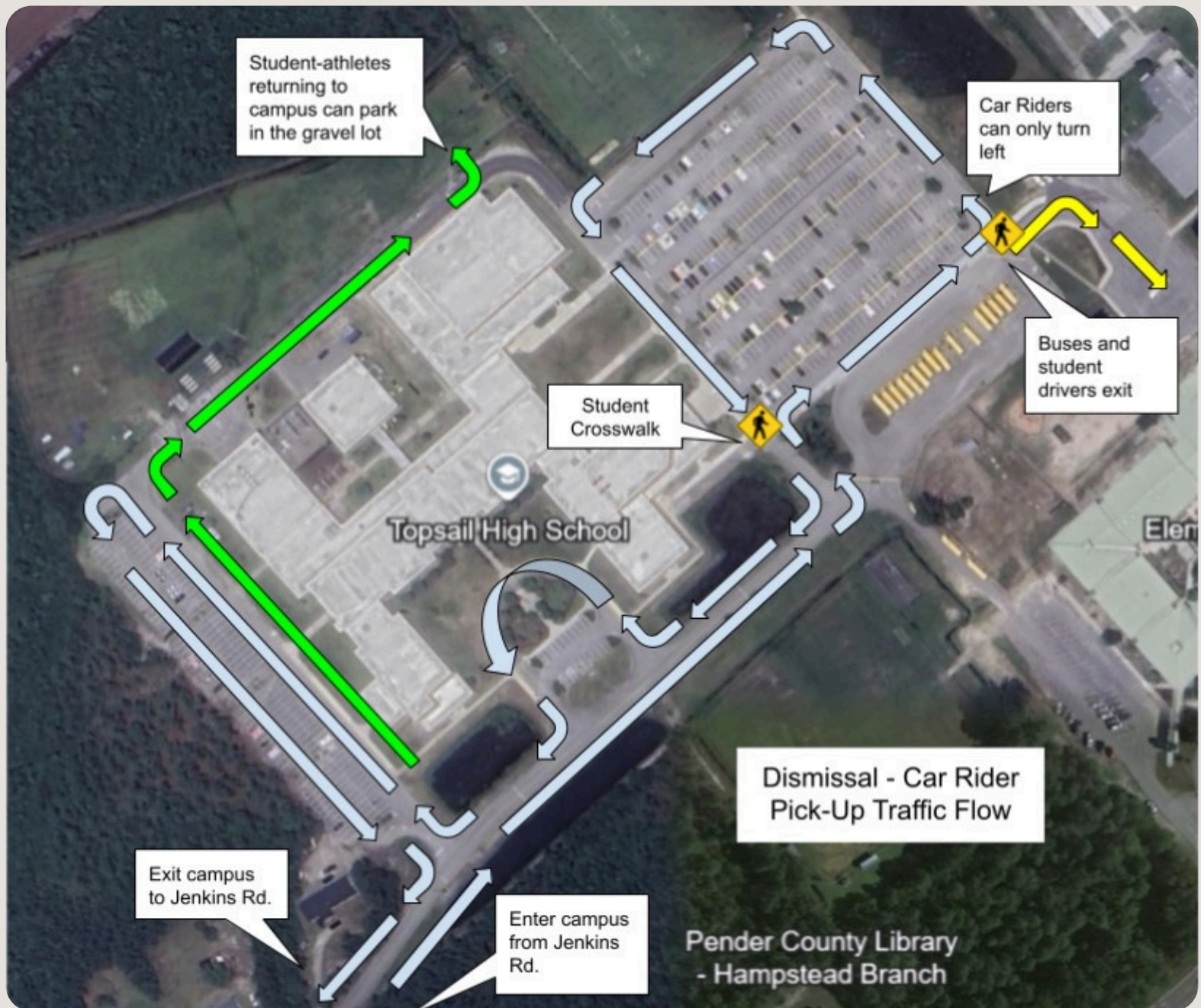


	Arrival	Dismissal
Topsail High School	6:40 – 7:10	2:05 – 2:30
Topsail Annandale Elementary	7:25 – 7:55	2:50 – 3:15
Topsail Middle School	8:10 – 8:40	3:40 – 4:00

## Topsail High School Arrival



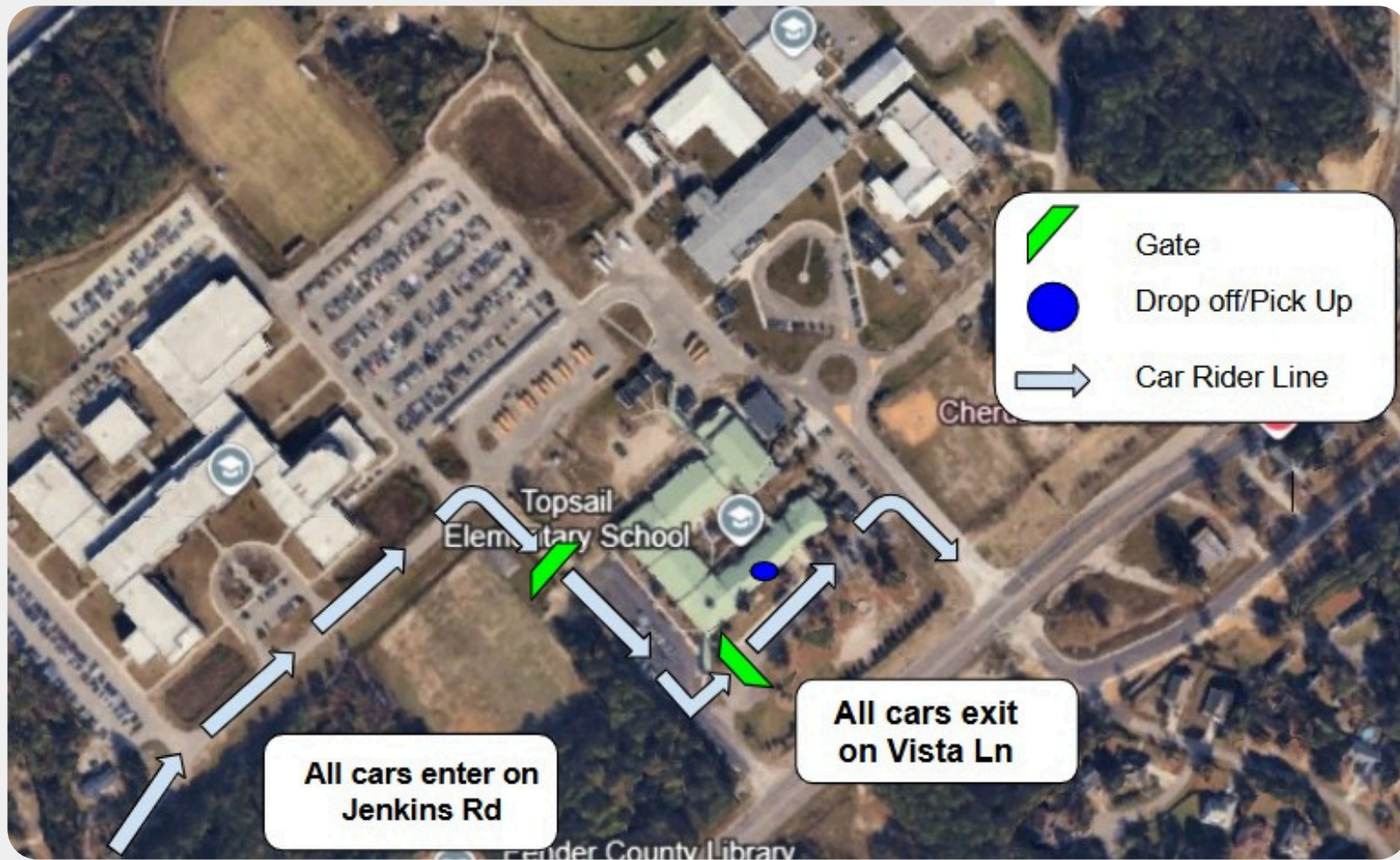
# Topsail High School Dismissal



## Plan Ahead

- THS available through Vista Lane from 6:30 am – 8:00 am
- THS available through Jenkins Rd from 8:00 am – 2:30 pm
- THS parents will not be able to use the TAES or TMS parking lots to pick up students and may be required to move.
- THS dual enrolled students will enter and exit through Jenkins Rd

# Topsail Annandale Arrival/Dismissal



## Plan Ahead



TAES car rider gate will not open until 7:15 am. TAES car riders should not enter Jenkins Rd until 7:15 am or they may be required to go through the high school car line and re-enter.



TAES car rider gate will not open until 2:30 pm. TAES cars should not enter Jenkins Rd until 2:30 and may be required to go through the high school car line and re-enter.



All cars need to have the green car rider tag showing at arrival AND dismissal.

# Topsail Middle Arrival/Dismissal

