

# Raymore-Peculiar School District

Child Nutrition Department  
21005 S. School Road, PO Box 789, Peculiar, MO 64078  
Phone: 816-892-1370 \* Fax: 816-892-1387  
[www.rpchildnutrition.org](http://www.rpchildnutrition.org)

3/19/2024

## INVITATION FOR BID

DATE ISSUED Tuesday, March 19, 2024

### **Raymore-Peculiar School District**

**CL44eN-BAS ELECTRIC High Temperature Rack Conveyor Dishwashing Machine & Booster Water Heater**

The Raymore-Peculiar School District is seeking bids for Conveyor Dishwashing Machine for Raymore Elementary. Please send questions to: [Katlyn.Lanoue@raypec.org](mailto:Katlyn.Lanoue@raypec.org) or (816) 892-1371

**Submit sealed bids to:** Pam Steele, Board Secretary, Raymore-Peculiar School District, 21005 South School Road, PO Box 789, Peculiar MO, 64078

#### **PROJECTS' ADDRESSES:**

Raymore Elementary: 500 S Madison St, Raymore, MO 64083

#### **BID SUBMITTAL AND OPENING:**

The owner will receive sealed lump sum pricing per project until the bid time and date at the location given below, for furnishing all labor and material for all improvements as specified. Bids will be read aloud at the advertised time. The owner reserves the right to select individual projects or the entire bid, and to reject all bids. Bidders may mail to the below address or hand-deliver. Please indicate "**Child Nutrition Dishwasher Bid**" on the envelope. It is the responsibility of the offeror to ensure the timely delivery of the proposal. Any proposal received after the said bid closing time will be returned unopened. Electronic or facsimile proposals will not be considered. The owner will only consider bids prepared in compliance with the instructions to bidders issued by the owner and delivered as follows:

**MANDATORY PRE-BID: Monday, Apr 1, 2024**

**TIME: 9:00 am, Local time**

**LOCATION:** Raymore Elementary: 500 S Madison St, Raymore, MO 64083

**BID DATE:** **Wednesday, April 17, 2024**

**BID TIME:** 1:00 pm, Local time.

**LOCATION:** Administrative Services Center, Conference Room 279, 21005 S. School Rd., Peculiar, MO 64078

*Our Mission: Preparing EACH Student for a Successful and Meaningful Life  
Our Vision: Turning Today's Learners into Tomorrow's Leaders*

## BIDDER'S QUALIFICATIONS:

Bidders must be properly licensed under the laws governing their respective trades and be able to obtain insurance required for the work. An **insurance form must be provided to the owner with the bid.**

Regulatory Requirements: All Contractors and Subcontractors shall conform to the State of Missouri, Division of Labor Standards, Annual Wage Order No. 30, Cass County, in accordance with Section 290.262 CUM. Supp. RSMo (1994). All Contractors and Subcontractors shall conform to the Missouri Prevailing Wage Law Sections 290.550 to 290.580 Public Works during Excessive Unemployment.  
Prevailing Wage Only If Total Bid Is Over \$75,000

Anti-Discrimination Against Israel Act

This Company is not currently and shall not, for the duration of this contract, engage in a boycott of goods or services from the State of Israel; companies doing business in or with Israel; or authorized by, licensed by, or organized under the laws of the State of Israel; or persons or entities doing business in the State of Israel.

## GENERAL INFORMATION:

Bid to include the following turnkey installation guidelines:

- Removal and disposal of existing equipment
- Modification of dish tables and vent risers required to accommodate shorter machine
- Complete installation and final hookups of new equipment
- Any plumbing/electrical materials and labor required to complete installation

## SPECIFICATIONS

All proposals submitted should meet the specifications shown below, or provide a similar alternate that meets the performance requirements. The District will review and select the unit(s) that is/are deemed appropriate for the Child Nutrition Department. This bid is for the equipment, shipped, uncrated, fully installed, tested and functional.



Project \_\_\_\_\_  
 AIA # \_\_\_\_\_ SIS # \_\_\_\_\_  
 Item # \_\_\_\_\_ Quantity \_\_\_\_\_ C.S.I. Section 114000



## CL44eN-BAS ELECTRIC High Temperature Rack Conveyor Dishwashing Machine



### SPECIFIER STATEMENT

Specified dishwasher will be Hobart CL44eN Base electric tank heat model with Opti-Rinse™. Includes insulated ergonomic cabinet style doors, dirty water indicator, configurable "Intelligent" de-lime notification, top mounted computer controls, and NSF approved pot and pan cycle mode. The wash tank utilizes durable precision pressure sensor monitors in lieu of conventional mechanical floats. The 19.5" standard chamber height will accommodate up to (6) standard sheet pans at a time on an open-end sheet pan rack.

### STANDARD FEATURES

- + 202 racks per hour
- + Opti-Rinse™ system
- + Rapid return conveyor drive mechanism
- + Large double door opening for ease of cleaning
- + Doors are insulated & hinged with door interlock switches
- + 19.5" chamber height opening (accepts sheet pans)
- + Top mounted micro-processor control module
- + Energy saver mode (programmable auto-shut down)
- + Dirty water indicator
- + Manager activated low temperature alert
- + NSF rated configurable pot and pan dwell mode
- + Configurable "Intelligent" de-lime notification
- + Service diagnostics
- + Self-aligning wash manifolds
- + Stainless steel anti-clogging wash arms
- + Stainless steel self-draining pump and impeller
- + Single, sloping scrap screen and deep scrap basket
- + Stainless panels enclose perimeter and bottom
- + Door actuated drain closure
- + Convertible hot water or low temp final rinse
- + Vent fan control
- + Booster heater control
- + ENERGY STAR® Certified

### OPTIONS & ACCESSORIES (Available at extra cost)

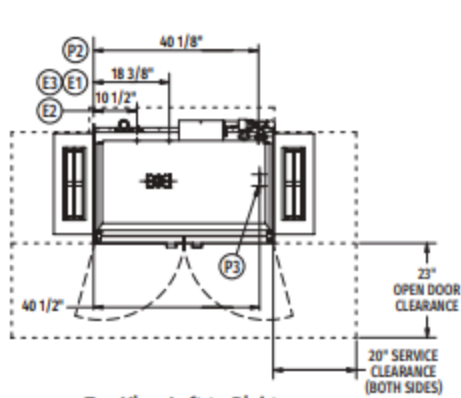
- Standard, short and extended stainless steel vent hoods
- Internal stainless steel pressure-less 30 kW booster heater field convertible to 15 kW (booster includes PRV)
  - + Dual point electrical connection standard on 208/60/3 and 240/60/3 voltage machines, when equipped with internal booster; single point kits available (see page 3)
  - + Single point connection standard on 480/60/3 and 600/60/3 voltage machines, when equipped with internal booster
- Direct drive unloader – adds 38" length. Reference spec F39520 for more details
- Side loader – SL23 adds 23" length, SL30 adds 30" length. Reference specs F40926 and F40927 for more details
- Blower-dryer – adds 33¾" to length. Reference spec F40252 for more details (ships separate from dishmachine, contact Hobart Service for installation)
- Drain water tempering kit (field installed)
- Flanged feet kit (requires two kits)
- Higher than standard chamber (24" opening)
- Table limit switch with 10' wire
- Correctional package (contact Hobart for details)
- Pressure regulator valve (PRV), for use with external booster
- Water shock absorber kit
- Factory-mounted circuit breakers (contact Hobart for details)
- Field installed single point kits available for 208/60/3 and 240/60/3 machines when equipped with internal booster

CLEAN SERIES – CL44eN-BAS ELECTRIC

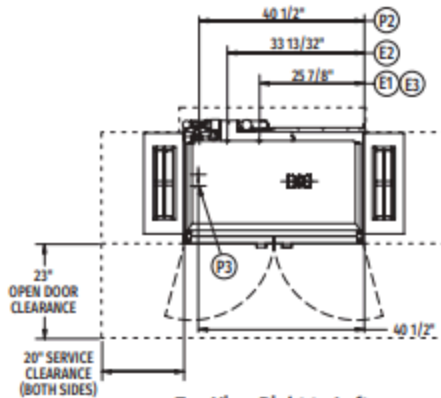
Approved by \_\_\_\_\_ Date \_\_\_\_\_ Approved by \_\_\_\_\_ Date \_\_\_\_\_



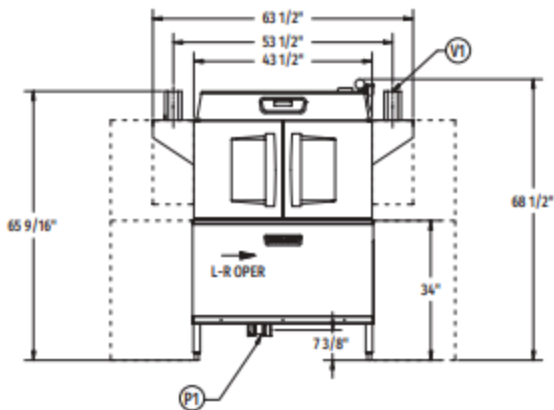
# CL44eN-BAS ELECTRIC High Temperature Rack Conveyor Dishwashing Machine



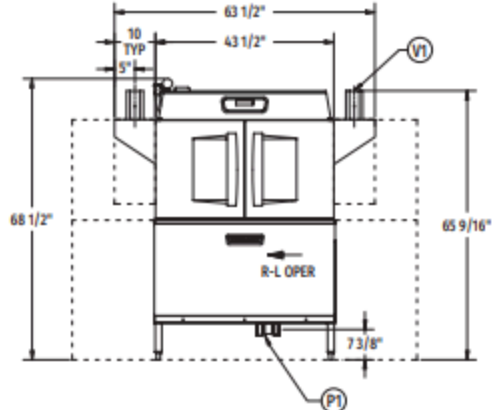
Top View Left to Right



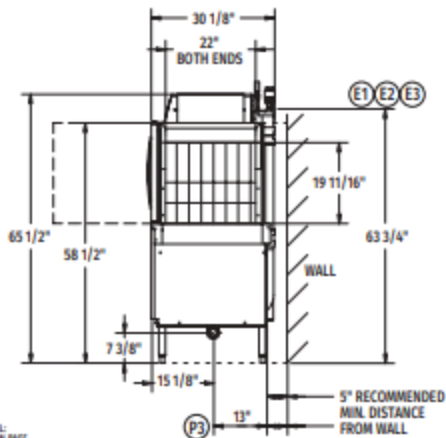
Top View Right to Left



Front View Left to Right



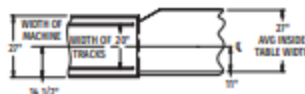
Front View Right to Left



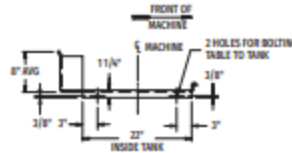
Side View

MODEL:  
CL44eN-BAS  
L-R OPERATION  
D-47481  
REV B

## Tabling Connection: 44" inside tank (at table connection)



## Suggested Track and Table Layout



View Showing Hole Locations in  
Turned Down Portion of Table

MODEL:  
CL44eN-BAS  
R-L OPERATION  
D-47480  
REV B



# CL44eN-BAS ELECTRIC

## High Temperature Rack Conveyor Dishwashing Machine

### LEGEND

Electrical Connections	
Required when machine equipped with <b>SINGLE POINT ELECTRICAL CONNECTION</b>	
E1	Tank heat, motors, controls AND 30kW booster heater – multiple knockouts provided, 63-3/4" AFF.
Required when machine equipped with <b>DUAL POINT ELECTRICAL CONNECTION</b>	
E2	Tank heat, motors and controls – multiple knockouts provided, 63-3/4" AFF.
E3	Internal 30kW booster heater – multiple knockouts provided, 63-3/4" AFF.
Multiple knockouts provided for 2", 1" and 1/2" trade size conduits.	
Plumbing Connections	
P1	Drain. May be drained to either side of valve, plug opposite side 2" FPT. Recommend a floor drain minimum of 12" from machine for access and maintenance. 7-3/8" AFF.
P2	Hot water. 1/2" FPT connection. 1/2", 11-3/16" AFF. See plumbing notes for required temperatures.
P3	Optional cold water connection for drain water tempering 1/2" FPT, cold water temperature 80° F, maximum 7-3/8" AFF.
Vent Connections	
V1	Optional vent hoods, 4" x 16" vent stack with damper.

### SPECIFICATIONS

#### Capacities

Racks Per Hour (NSF rated) .....	202
Wash Tank (U.S. gallons) .....	23
Conveyor Speed (feet per minute) .....	5.6

#### Motor Horsepower

Drive .....	1/6
Wash .....	2

#### Water Consumption

U.S. Gallons per Hour (maximum use at 20 PSI) .....	126
U.S. Gallons per Rack .....	0.62
Peak Drain Flow (U.S. gallons per minute) .....	38

#### Heating

Tank Heat, Electric (kW) .....	15
Optional Electric Booster (built-in) (kW for 40° F rise) .....	15
Optional Electric Booster (built-in) (kW for 70° F rise) .....	30

#### Venting

Load End (minimum CFM) .....	200
Unload End (minimum CFM) .....	400

Shipping Weight (approximate) ..... 594 lbs.

Crated Dimensions ..... 53"L x 38"W x 78"H

E1 Single Point Electrical Connection with internal 30 kW Booster Heater			
Voltage	(E1) Tank Heat, Motors, Controls 30kW Booster Heater		Single Point Service Connection
	Rated Amps	Minimum Supply Circuit Ampacity / Maximum Protective Device	
208/60/3	138.9	175	Field Installed <b>SGLPT-KIT4-CLE</b> required, order separately
240/60/3	132.8	150	Field Installed <b>SGLPT-KIT2-CLE</b> required, order separately
480/60/3	68.0	90	Ships Standard, Factory Installed
600/60/3	47.1	60	Ships Standard, Factory Installed

E2 Dual Point Electrical Connection with Internal 30 kW Booster Heater					
(For machines without internal booster heater, refer to E2, Tank Heat, Motors & Controls connection only)					
Voltage	(E2) Tank Heat, Motors, Controls		(E3) 30kW Booster Heater		Dual Point Service Connection
	Rated Amps	Minimum Supply Circuit Ampacity / Maximum Protective Device	Rated Amps	Minimum Supply Circuit Ampacity / Maximum Protective Device	
208/60/3	55.0	70	83.9	90	Dual Point Ships Standard
240/60/3	52.6	70	80.2	90	Dual Point Ships Standard
480/60/3	27.9	40	40.1	50	Field Convertible
600/60/3	20.3	25	26.9	40	Field Convertible



## CL44eN-BAS ELECTRIC High Temperature Rack Conveyor Dishwashing Machine

**WARNING:** Plumbing and electrical connections should be made by qualified personnel who will observe all the applicable plumbing, sanitary, safety codes and National Electrical Code.

**Plumbing Notes:** Minimum incoming water temperatures: 110°F for 30kW internal booster, 140°F for 15kW field converted internal booster, 180°F without internal booster. Building flowing water pressure to dish machine is 20 PSI, (+/- 5 PSI). For non-booster machines, a PRV with internal expansion bypass is required. When ordered as an accessory, ½" brass regulator must be installed before the booster. Water temperature to the regulator must not exceed 140°F.

Recommended water hardness to be 3 grains or less for best results.

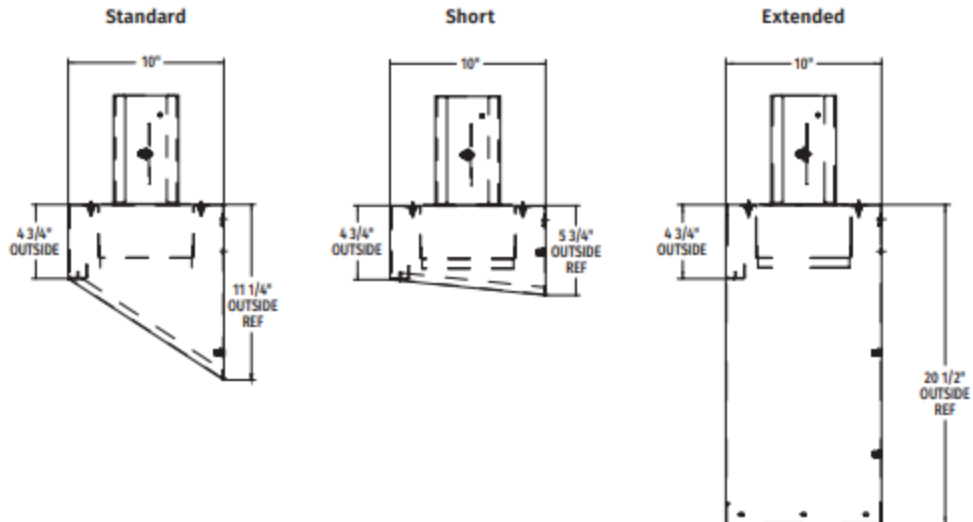
**Electrical Note:** Dishmachine not provided with internal GFCI protection.

CL44eN-BAS Electric Heat Dissipation		
Booster	BTU/HR.	
	Latent	Sensible
Without Booster	14,700	6,300
15kW Booster	28,300	12,100
30kW Booster	41,800	17,900

**NOTE:** 30kW Booster Heater field convertible to 15kW when 140°F incoming water provided. (Conversion instructions located in machine control box. Contact factory for 15kW booster amperage ratings.)

**NOTE:** Additional CLeN Voltages and Amperages are available, see document F40972.

### VENT HOOD OPTIONS (Adjustable, vent stack can be adjusted 1" to either side)



Item	Qty	Description
1	1 ea	<p data-bbox="423 254 813 281"><b>DISHWASHER, CONVEYOR TYPE</b></p> <p data-bbox="423 296 1289 573">Hobart Model No. CL44EN-BAS+BUILDUP Conveyor Dishwasher, single tank, (202) racks/hour, insulated hinged doors, .62 gallon/rack, stainless steel enclosure panels, microprocessor controls with low temperature &amp; dirty water indicators, NSF Pot &amp; Pan mode, programable de-lime notification, ENERGY STAR®, Free factory startup for installations within a 100 mile radius of a Hobart service office; installation beyond 100 miles will be charged at the quoted rate by the local Hobart service office</p> <p data-bbox="354 583 1289 720">1 ea Oversized units with crated shipping dimensions greater or equal to 72" in length and/or 90" in height. If delivery is to a facility without a standard height dock, additional shipping charges will apply depending on the service requested. consult Factory.</p> <p data-bbox="354 730 1289 793">1 ea Standard warranty - 1-Year parts, labor &amp; travel time during normal working hours within the USA</p> <p data-bbox="354 804 954 831">1 ea CL44EN-BASHT15K Electric tank heat 15kW</p> <p data-bbox="354 842 834 869">1 ea CL44EN-BASELE0BH 208v/60/1-ph</p> <p data-bbox="354 879 946 907">1 ea Dual Point (2) service connection standard</p> <p data-bbox="354 917 873 945">1 ea CL44EN-BASHGTSTD Standard height</p> <p data-bbox="354 955 938 982">1 ea CL44EN-BASDIR0RL Right to left operation</p> <p data-bbox="354 993 837 1020">1 ea CL44EN-BASFETSTD Standard feet</p> <p data-bbox="354 1031 1224 1094">1 ea NOTE: For water of 3-grains of hardness or more, Hobart suggests adding a water softener.</p> <p data-bbox="354 1104 1105 1131">2 ea VNTHD/E-ADJ E-series vent hood domestic (adjustable)</p>
<b>ITE</b>		
3	1 ea	<p data-bbox="423 1203 764 1230"><b>BOOSTER HEATER, ELECTRIC</b></p> <p data-bbox="423 1245 1289 1417">Hatco Model No. C-45 Compact Booster Heater, electric, 6 gallon storage capacity, electric operation, stainless steel front panel, powder-coated silver-gray hammertone body, 6" plastic non-adjustable legs, Castone® lined tank, 45.0kW, NSF, cULus, Made in USA</p>



**To use this document, see below sample:**

- 1 Locate the appropriate model and tank heat.
- 2 Locate the appropriate voltage (same, highlight one of the voltages beside the model).
- 3 Determine the amp loads and circuit breakers for booster and connection requirements. If booster or connection options are not available for certain models and voltages, those areas will be marked as n/a (not available).

**ELECTRIC**

Model	Voltage	Single Point – Tank Heat, Motors, Controls, 30 kW Booster (SEF)		Single Point – Tank Heat, Motors, Controls, 15 kW Booster (SEF)		Tank Heat, Motors, Controls		Electric Booster 30kW		Electric Booster 15kW		Split Service – Motors, Controls		Split Service – Wash Tank Heat		Split Service – Rinse Tank Heat (64 & 86 Only)		
<b>1</b> <b>BAS ELECTRIC MODELS:</b> <b>CL44eN, CL54eN</b>	208/60/3	138.9	175	100	110	55	70	83.9	90	45	60	10	15	45	60	n/a	n/a	
	240/60/3	132.8	150	92.7	110	52.6	70	80.2	90	40.1	50	9.7	15	43	60	n/a	n/a	
	480/60/3 <b>2</b>	68	90	47.9	60	27.9	40	40.1	50	20	25	6.4	15	22	30	n/a	n/a	
	600/60/3	47.1	60	33.7	45	20.3	25	26.9	40	13.5	20	5.9	15	14.4	20	n/a	n/a	
	208/60/1ph	n/a	n/a	n/a	n/a	n/a	n/a	n/a	n/a	n/a	n/a	n/a	15.9	20	78	100	n/a	n/a
	240/60/1ph	n/a	n/a	n/a	n/a	n/a	n/a	n/a	n/a	n/a	n/a	n/a	15.7	20	74.4	100	n/a	n/a
	200/50/3ph	134.7	175	97.2	110	53.9	70	80.8	90	43.3	60	10.6	15	43	60	n/a	n/a	
	380-415/50/3ph	78.3	90	55.1	70	31.8	40	46.5	60	23.3	30	7	15	24.8	40	n/a	n/a	
380/60/3ph	72.5	90	51.3	60	30.1	40	42.5	60	21.3	30	7.3	15	23	30	n/a	n/a		
<b>BAS ELECTRIC MODELS:</b> <b>CLPS66eN, CLCS66eN, CLPS76eN, CLCS76eN</b>	208/60/3	144.5	175	105.6	125	60.6	80	83.9	90	45	60	15.6	20	45	60	n/a	n/a	
	240/60/3	138.2	150	98.1	110	58	80	80.2	90	40.1	50	15.1	20	43	60	n/a	n/a	
	480/60/3	70.7	90	50.6	60	30.6	40	40.1	50	20	25	9.1	15	22	30	n/a	n/a	
	600/60/3	49.4	60	36	45	22.6	35	26.9	40	13.5	20	8.5	15	14.4	20	n/a	n/a	
	208/60/1ph	n/a	n/a	n/a	n/a	n/a	n/a	n/a	n/a	n/a	n/a	n/a	27.9	35	78	100	n/a	n/a
	240/60/1ph	n/a	n/a	n/a	n/a	n/a	n/a	n/a	n/a	n/a	n/a	n/a	27.1	35	74.4	100	n/a	n/a
	200/50/3ph	140.8	175	103.3	125	60	80	80.8	90	43.3	60	16.6	20	43	60	n/a	n/a	
	380-415/50/3ph	82	90	58.8	70	35.5	40	46.5	60	23.3	30	10.1	15	24.8	40	n/a	n/a	
380/60/3ph	76	90	54.8	70	33.5	40	42.5	60	21.3	30	10.7	15	23	30	n/a	n/a		
<b>BAS ELECTRIC MODEL:</b> <b>CL64eN</b>	208/60/3	174.5	200	135.6	150	90.6	125	83.9	90	45	60	15.6	20	45	60	30	40	
	240/60/3	166.8	200	126.7	150	86.6	125	80.2	90	40.1	50	15.1	20	43	60	28.6	40	
	480/60/3	85	100	64.9	80	44.9	60	40.1	50	20	25	9.1	15	22	30	14.3	20	
	600/60/3	59.1	70	45.7	60	32.2	45	26.9	40	13.5	20	8.2	15	14.4	20	9.6	15	
	208/60/1ph	n/a	n/a	n/a	n/a	n/a	n/a	n/a	n/a	n/a	n/a	n/a	26.9	35	78	100	52	70
	240/60/1ph	n/a	n/a	n/a	n/a	n/a	n/a	n/a	n/a	n/a	n/a	n/a	26.3	35	74.4	100	50	70
	200/50/3ph	169.6	200	132.1	150	88.8	125	80.8	90	43.3	60	16.6	25	43	60	28.9	40	
	380-415/50/3ph	98	110	74.8	90	51.5	60	46.5	60	23.3	30	10.1	15	24.8	40	16.6	25	
380/60/3ph	91.2	110	70	90	48.7	60	42.5	60	21.3	30	10.7	15	23	30	15.2	20		





There's only one #1™

## Compact Electrical Booster Water Heaters

Model: C-4, -5, -6, -7, -9, -12, -13, -15, -17, -18, -24, -27, -30, -36, -39, -45, -54, -57

The Hatco Compact Electric Booster Water Heater provides all the 180°F (82°C) final rinse water required to sanitize and flash-dry dishes and flatware. The space saving Compact is easy to install next to the dishwasher with slide brackets or on 6" (152 mm) legs. The storage capacity is 6 gallons (23 liters).

### Standard features

- All models include a Castone® lined tank with a 10-year limited warranty
- Features include a temperature/pressure relief valve, a pressure reducing valve, two temperature/pressure gauges, a high-temperature limit control, pilot indicator light, on-off switch, and a low-water cut-off to prevent element burnout due to a low water condition
- Available with slide brackets for mounting under a dishtable
- Each booster has fiberglass insulation to minimize heat loss
- Hatco electric booster heaters are factory pre-plumbed and pre-wired with calibrated immersion thermostat and high-temperature limit switch
- A stainless steel front panel and powder-coated silver-gray hammertone body is standard on all Compact models
- Swing-away front panels with low-water cut-off, control fuses and transformer allow quick access to probes and elements for easier serviceability

Project \_\_\_\_\_

Item # \_\_\_\_\_

Quantity \_\_\_\_\_



### Options (available at time of purchase only)

- Stainless steel body and base
- Security package (Torx screws and control cover)

### Accessories

- Additional slide brackets
- Additional stainless steel floor mounting leg assembly
- Blended Phosphate injection system (not for potable water)
- Shock absorber (reduces water hammer)
- Back pressure relief valve
- Additional brass pressure reducing valve with by-pass
- Additional stainless steel adjustable legs 6" - 7" (152 - 178 mm)



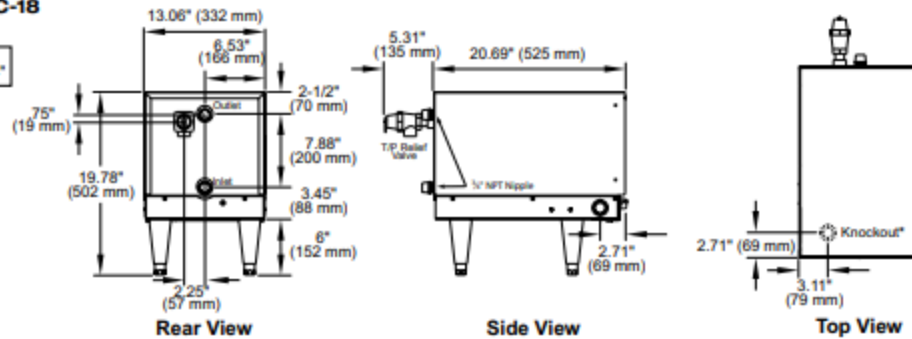
# Compact Electrical Booster Water Heaters

Model: C-4, -5, -6, -7, -9, -12, -13, -15, -17, -18, -24, -27, -30, -36, -39, -45, -54, -57

## Models C-4 through C-18

Electrical Knockouts left side and bottom—3/4", 1", and 1-1/4"

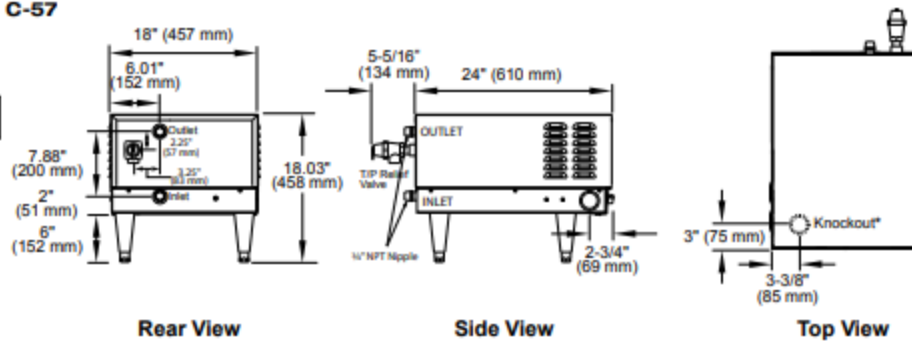
\* Knockout is located on the bottom of unit.



## Models C-24 through C-57

Electrical Knockouts left side and bottom—1-1/2" and 2"

\* Knockout is located on the bottom of unit.



## SPECIFICATIONS

### Compact Electric Boosters

Model	Dimensions (Width x Depth x Height*)	kW	Volts	1 phase		3 phase		Ship Weight*
				Amps	Breaker/ Fuse Size	Amps	Breaker/ Fuse Size	
C-4	13.06" x 20.69" (26") x 13.78" (332 x 525 (660 mm) x 350 mm)	4	208	19.3	30	—	—	105 lbs. (48 kg)
			240	16.7	30	—	—	
			480	8.4	15	—	—	
C-5	13.06" x 20.69" (26") x 13.78" (332 x 525 (660 mm) x 350 mm)	5	208	24.1	30	—	—	105 lbs. (48 kg)
			240	20.9	30	—	—	
			480	10.5	15	—	—	
C-6*	13.06" x 20.69" (26") x 13.78" (332 x 525 (660 mm) x 350 mm)	6	208	28.9	40	25	40	118 lbs. (54 kg)
			240	25	40	21.6	30	
			480	12.5	20	10.8	15	
			600	—	—	6.1	15	
C-7*	13.06" x 20.69" (26") x 13.78" (332 x 525 (660 mm) x 350 mm)	7	208	33.7	50	29.1	40	118 lbs. (54 kg)
			240	29.2	40	25.2	40	
			480	14.6	20	12.6	20	
			600	—	—	6.8	15	

\* Height does not include legs.

\* Shipping weight includes packaging.

† Includes Temperature/Pressure Relief Valve.

\* Only 6, 7, & 9kW Models, 208 and 240 volts only, can be field converted to single phase (units are shipped 3-phase open delta). Larger branch circuit required than for balanced 3-phase of equal kW. (Balanced 3-phase available, consult factory.)

Roofing Contact:

Delta Roofing (913-371-7100)

Not a required contractor, provided as a courtesy only

Please submit any clarification on specifications to Scott Dobson: [Scott.Dobson@raypec.org](mailto:Scott.Dobson@raypec.org) or (816) 935-1373

The request must contain the provider/proposer's name, address, phone number, fax number, e-mail and the name of a contact person.

The District will issue responses to inquiries and any other corrections or amendments it deems necessary in written addendum prior to the Proposal due date. Providers should rely only on the representations, statements or explanations that are contained in this RFP and the written addendum to this RFP. Where there appears to be a conflict between the RFP and any addendum issued, the last addendum issued will prevail.

## STANDARD TERMS & QUOTATIONS

The following terms and conditions shall prevail unless otherwise modified by the Raymore-Peculiar School District through a written addendum. The Raymore-Peculiar School District reserves the right to reject any and all bids and to waive any informalities in the bids received whenever such action is in the District's best interests.

1. **ACCURACY OF BIDS** – Each bid is made part of the public record of the Raymore-Peculiar School District. Therefore, it is necessary that any and all information presented is accurate.
2. **SUBMISSION OF BID** – Bid is to be submitted to: Pam Steele, Board Secretary, Raymore-Peculiar School District , 21005 South School Road, PO Box 789 , Peculiar MO, 64078
3. prior to the date and time indicated on the cover sheet. One original and one copy shall be provided.
4. **LATE BIDS** – Bids received after the deadline designated in this document shall not be considered.
5. **BID AWARD** – The Board of Education or its authorized representatives will award the bid.
6. **NEW SUPPLIES**– Unless otherwise specified, all material or supplies offered shall be new, unused, of recent manufacture, and suitable for their intended purpose.
7. **DELIVERY TERMS** – Delivery to:  
Raymore Elementary School, 500 S Madison St, Raymore, MO 64083, uncrated, fully installed, tested and functional within defined times, to be determined upon order of equipment.
6. **DAMAGED AND/OR LATE SHIPMENTS** – The Raymore-Peculiar School District has no obligation to accept damaged shipments and reserves the right to return at the vendor's expense damaged merchandise even though the damage was not apparent or discovered until after the receipt of the items.
7. **SAFETY** – All practices, material, supplies and equipment shall comply with the Federal Occupational Safety and Health Act, as well as any pertinent Federal, State and/or local safety or environmental codes.
8. **HOLD HARMLESS** – The contractor agrees to protect, defend, indemnify and hold the Board of Education, its officers, employees and agents free and harmless from and against any and all losses, penalties, damages, settlements, costs, charges, professional fees or other expenses or liabilities, actions, proceedings or causes of action of every kind and character in connection with or arising directly or indirectly out of this agreement and/or the performance hereof.
9. **LAW GOVERNING** – All contractual agreements shall be subject to, governed by and construed according to all applicable federal, state and local laws and Raymore-Peculiar Board of Education policies.
10. **NON-DISCRIMINATION CLAUSE** – No one submitting a bid on this request shall in any way, directly or indirectly, discriminate against any person because of age, race, color, disability, sex, national origin or religious creed.

**Bidder's Checklist:**

**All items listed below must be included when submitting your bid.**

Signed vendor acceptance form \_\_\_\_\_

Bid proposal \_\_\_\_\_

Insurance Form \_\_\_\_\_

Equipment Cut Sheet(s) \_\_\_\_\_

One original bid \_\_\_\_\_

One copy of bid \_\_\_\_\_

**Vendor Acceptance:**

I have read and agreed to all of the general information, specifications and the standard terms of the bid.

Company Name:	
Company Address:	
Phone Number:	
Authorized Representative:	
Authorized Signature:	
Title:	
E-mail address:	
Date:	
Preferential Business: (optional)	
List any conditions precedent to acceptance:	

Raymore-Peculiar School District  
Child Nutrition Department  
21005 S. School Rd  
Peculiar, MO 64078

Child Nutrition Dishwasher Bid

Raymore-Peculiar School District  
 Child Nutrition  
 Bid: Dishwasher- Raymore Elementary

(1) Replace Dishwasher and Booster Heater	
TOTAL EQUIPMENT PRICE	
(2) Plumbing/electrical materials and labor for installation	
TOTAL LABOR PRICE	
(3) 24 Month Labor/Service/Equipment Warranty	
TOTAL WARRANTY PRICE	
FREIGHT	
GRAND TOTAL QUOTATION PRICE	

Notes / Clarifications:

Company		Printed Name	
Address		Authorized Signature	
City/State/Zip		Title	
Telephone		Date	

**Raymore Elementary Construction Schedule Form**

Submit a signed copy of this document with the bid. The Contractor shall agree to construction start and completion dates, per the attached Construction Schedule, for the work, which is being bid.

Raymore Construction Schedule:

Item	Description/Scope of Work	Date
1	Bid Documents Released	March 19, 2024
2	<b>Mandatory Pre-Bid</b>	Apr 1, 2024
3	Bid Opening Date	April 17, 2024
4	Board of Education Approval	April 25, 2024
5	Notice to Proceed	April 26, 2024
6	Mobilization Construction Start	June 3, 2024
7	Final Completion	August 5, 2024

<p>_____</p> <p>Authorized Signature:</p> <p>_____</p> <p>Printed Name &amp; Title:</p> <p>_____</p> <p>Date:</p>
---