

CAREER ACADEMY for POSTGRADUATES

A postsecondary program designed to empower young adults with vision or hearing loss to successfully transition into productive employment, independent living, and/or postsecondary education.

A program offered by the



WEST VIRGINIA SCHOOLS FOR THE DEAF AND THE BLIND

301 E. Main St.
Romney, WV 26757

OVERVIEW

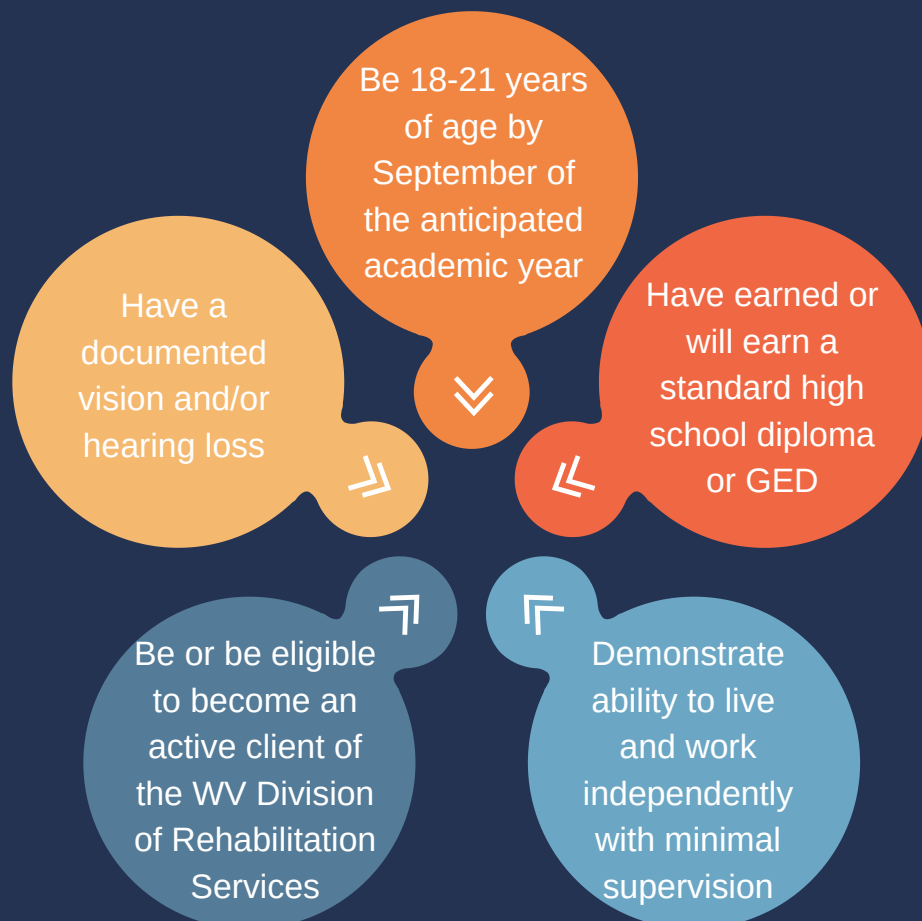
At the core of WVSDDB's mission is a commitment to preparing students for success in employment and independent living. This includes fostering self-advocacy, financial security, and access to resources guaranteed under federal and state laws.

Through the CAP Program, WVSDDB leverages its specialized resources to equip participants with the skills, knowledge, and confidence needed to pursue their aspirations, live independently, and make informed decisions. In doing so, the program helps bridge the gap in educational and employment outcomes for adults with vision and/or hearing loss.

Upon admission, participants meet with CAP Program staff to determine a personalized plan that focuses on areas of need and provides the specialized support required to achieve individual goals successfully.

Participants select one of two pathways: Educational or Vocational. Both tracks emphasize the development and refinement of skills required for employability while offering a tailored course of study designed to meet each participant's unique needs and goals.

ELIGIBILITY



EDUCATIONAL PATHWAY

Participants in the Educational Pathway may be dually enrolled in a postsecondary institution, either online or locally, or planning to enroll the following year. This pathway provides support in developing time management skills, positive study habits, self-advocacy, and skills for independent living.

For postgraduate students concurrently enrolled in college courses, a certificate program, or a trade school while participating in the CAP program, CAP staff will collaborate with personnel to ensure instructional support aligns with academic and training requirements. Students will also be encouraged to utilize appropriate accessibility resources available through their college or university.

Current established relationships for dual credit opportunities include Eastern WV Community and Technical College and Potomac State College. Program students may request transportation to and from college classes and events provided by WVSDDB and the CAP Program as needed.

For participants not yet enrolled in a postsecondary educational program, individualized plans will be developed to address academic areas that require additional preparation before admission. Students will work with CAP staff to establish goals for postsecondary education/training, strengthen areas of need for success in the college setting, and navigate the college admission process.

VOCATIONAL PATHWAY

Participants in the Vocational Pathway aim to transition directly into the workforce without pursuing a formal education or training program. This pathway provides individualized support to help participants gain hands-on experience, refine technical skills, and develop soft skills essential for successful workplace integration. Additionally, students will focus on building time management skills, self-advocacy, and skills for independent living to ensure long-term success.

As part of the CAP program, participants in the Vocational Pathway may engage in paid or unpaid employment opportunities, both on and off campus, to gain practical experience and prepare for workplace demands. Placement will be determined by interest, demonstration of workplace skills, and availability.

Participants in both pathways will engage in a comprehensive transition system of support tailored to their needs, skill level, and program goals.

SELF-AWARENESS AND SELF-DETERMINATION

Participants will explore strengths, learning styles, communication preferences, and workplace needs. By fostering a strong sense of self, participants will gain the confidence and tools to set realistic goals, make informed decisions, and engage in healthy relationships. This component empowers participants to take ownership of their futures.

EMPLOYMENT

Participants will develop the skills needed to seek, apply for, and maintain employment opportunities. Key topics include developing and revising employment-related documents, seeking professional development and continuing education opportunities in the workplace, social skills for the workplace, conflict resolution in the workplace, and etiquette for career transitions. Students will also learn about employee benefits and how employment may impact Social Security Income.

SOCIAL SKILLS

Students will enhance their ability to build and sustain healthy, positive relationships. Students will demonstrate an understanding of how actions impact others, team membership and collaboration, and how to communicate thoughts and feelings effectively. Students will also practice interpersonal skills for professional and personal environments.

SELF-ADVOCACY

Students will gain an understanding of their rights as a person with vision and/or hearing loss and learn how to advocate effectively for accommodations related to their disability, including the Americans with Disabilities Act (ADA) and relevant West Virginia code. Additionally, students will learn about and develop relationships with state agencies and organizations that provide support and resources for individuals with disabilities.

PROBLEM SOLVING

Students will develop and refine decision-making and critical-thinking skills. Participants will learn to independently address and resolve challenges, prevent potential issues, and evaluate options to make informed, positive choices. Emergency preparedness and handling unexpected situations will be emphasized.

REAL-WORLD SKILLS

In addition to the general curriculum, students work to master vital independent living skills through the residential program. Housed in a dedicated postsecondary dorm, students receive instruction and deliberate practice in personal hygiene and self-care; time management and organization; health, nutrition, and meal preparation; financial literacy and budgeting; home maintenance and upkeep; and navigating transportation options.

SUPPLEMENTARY SERVICES

To further support independence and success, CAP students may participate in tailored supplementary courses based on individual assessment of need. Possible topics include:



American Sign Language



Braille



Technology Training



Driver's Education



Orientation and Mobility

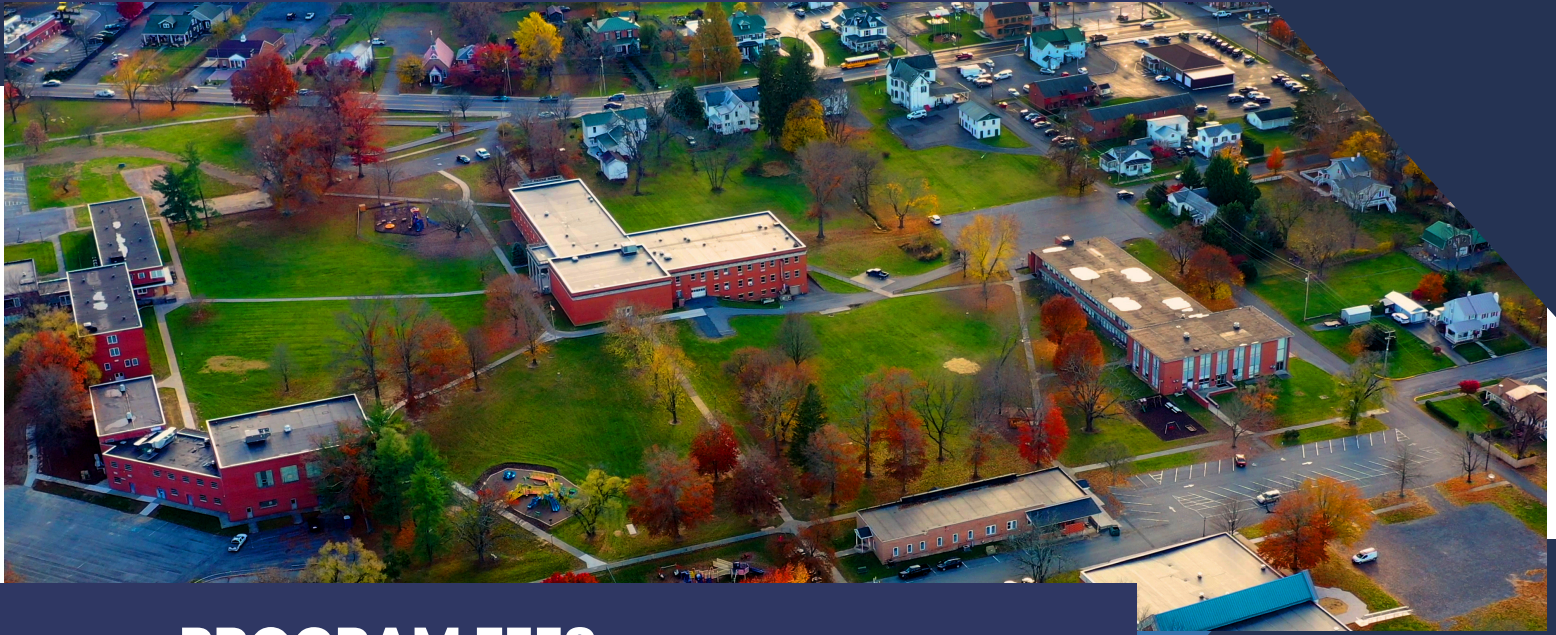


Speech-Language Pathology



Tutoring

This specialized coursework provides students with the skills to navigate everyday life effectively and to achieve long-term independence.



PROGRAM FEES

All participants must commit to a minimum of an academic year consisting of consecutive Fall and Spring semesters. Programming begins in August and ends in June.

Students may elect to remain on campus during the summer trimester for supplementary programming provided that they receive prior approval from CAP staff and the WVSDB administration.



Tuition

Fall and Spring: \$1200
Fall, Spring, and Summer: \$1800



Housing

\$50 Deposit (First/Last)
\$50 per month



Optional Meal Plan

10 Weekly Meals: \$35.00
15 Weekly Meals: \$47.50



Transportation

Transportation provided
by WVSDB to and from
hub pick-up and drop-off
locations

Financial assistance and scholarship opportunities available.



Rachel Lanham

Transition Coordinator

☎ 304-822-4810

✉ rachel.torrence@k12.wv.us

🌐 <https://www.wvsdb2.state.k12.wv.us/page/career-academy>

Franki Harrah

Program Specialist

☎ 304-822-4800

✉ franki.harrah@k12.wv.us

🌐 <https://www.wvsdb2.state.k12.wv.us/page/career-academy>

