

HEMLOCK

PUBLIC SCHOOL DISTRICT



WELCOME GUIDE

GUIDE TO THE GREAT LAKES BAY REGION

Live | Work | Play



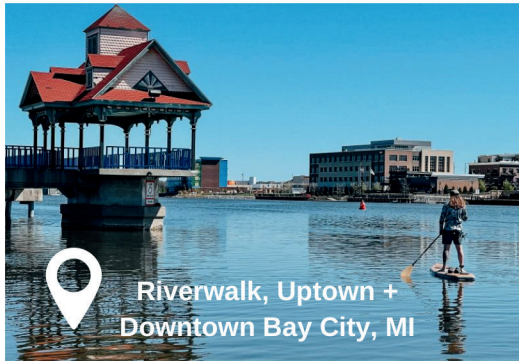
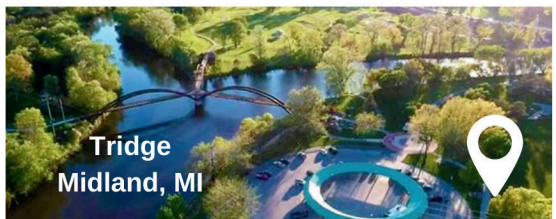
Welcome to the Great Lakes Bay Region! We're excited to hear you'll be spending some time here in the region. We hope you take some time to explore when you can.

Here are some of our favorites, but you can check out more of what the Great Lakes Bay Region has to offer at GoGreat.com or the links at the back of this guide.





In the Great Lakes Bay Region, you have abundant arts, entertainment and outdoor recreation opportunities at your fingertips!





FARM TO TABLE

[Artisan Urban Bistro | Saginaw, MI](#)
[Aster | Midland, MI](#)
[Honey B's Eatery | Frankenmuth, MI](#)
[MI Table | Bay City, MI](#)
[The Maple Grille | Hemlock, MI](#)

PATIO PERFECTION

[Cafe Zinc | Midland, MI](#)
[Drift | Bay City, MI](#)
[H2O's Waterside Grill | Bay City, MI](#)
[Real Seafood Company | Bay City, MI](#)
[ONe Eighteen | Midland, MI](#)
[Old City Hall | Bay City, MI](#)
[The Boardroom Bistro | Saginaw, MI](#)
[The Brass Cafe | Mt. Pleasant, MI](#)
[Valerie's Downtown | Saginaw, MI](#)

INTERNATIONAL FLAVORS

[Cinnamon Indian Cuisine | Midland, MI](#)
[Idli Dosa Indian Restaurant | Midland, MI](#)
[Gratzi | Midland, MI](#)
[Maru Sushi | Midland, MI](#)
[Midori Sushi | Mt. Pleasant, MI](#)
[Nino's Family Restaurant | Bay City, MI](#)
[Rico's Authentic Mexican Takeout | Saginaw, MI](#)
[Roma's Family Restaurant | Bay City, MI](#)
[Pasong's Cafe | Saginaw, MI](#)
[Peter + Chia's House Thai/Chinese | Saginaw, MI](#)

BBQ

[Baldwin's Smokehouse Barbeque | Saginaw, MI](#)
[BarqueBC | Bay City, MI](#)
[Bone Daddy's BBQ | Midland, MI](#)
[Molasses Smokehouse + Bar | Midland, MI](#)
[Meaty's Roadhouse BBQ & Sausage Shack | Bay City](#)
[Slo' Bones BBQ + Smokehaus | Frankenmuth, MI](#)
[The Maple Grille | Hemlock, MI](#)

COCKTAILS + LOCAL BREWS

[Frankenmuth Brewery | Frankenmuth, MI](#)
[Loggers Brewing Company | Saginaw, MI](#)
[Midland Brewing Company | Midland, MI](#)
[Mountain Town Brewing Co | Mt. Pleasant](#)
[Old Town Distillery | Saginaw, MI](#)
[Oracle Brewing Co. | Saginaw, MI](#)
[Prost Wine Bar & Charcuterie | Frankenmuth, MI](#)
[Public House | Bay City, MI](#)
[Summit Smokehouse + Taproom | Mt. Pleasant](#)
[Tri-City Brewing Company | Bay City, MI](#)
[WhichCraft Taproom | Midland, MI](#)

PIZZA

[Brooklyn Boyz Pizza | Bay City, MI](#)
[G's Pizzeria + Deli | Bay City, MI](#)
[Pisanellos Pizza | Mt. Pleasant, MI](#)
[Pizza Baker | Midland, MI](#)
[Pizza Sam's | Midland, MI](#)
[Vin Trofeo's Pizza + Pub | Mt. Pleasant, MI](#)
[Vinny's Uptown Grill | Bay City, MI](#)

VEGETARIAN / VEGAN FRIENDLY

[Cafe Zinc | Midland, MI](#)
[D'Angelo's | Bay City, MI](#)
[Egyptian Koshery | Midland, MI](#)
[Falafel Hut | Saginaw, MI](#)
[Fralia's | Saginaw, MI](#)
[Gatsby's Seafood + Steakhouse | Bay City, MI](#)
[Grove Tea Lounge | Midland, MI](#)
[ONe Eighteen | Midland, MI](#)

PLAY

Looking for something specific?
You can also search our region by
sport and activity on GoGreat [here](#)!

OUTDOOR RECREATION

[BaySail Appledore Tallships](#) | Bay City, MI
[Bay City Parks](#) | Bay City, MI
[Buckley's Mountainside Canoes](#) | Mt. Pleasant
[Chippewa Nature Center](#) | Midland, MI
[Midland Parks + Recreation](#) | Midland, MI
[Mt. Pleasant Parks + Recreation](#) | Mt. Pleasant
[Saginaw Parks + Recreation](#) | Saginaw, MI

PROFESSIONAL SPORTS

(Events are season specific)

BASEBALL

[Great Lakes Loons](#) | Midland, MI

HOCKEY

[Saginaw Spirit](#) | Saginaw, MI

GOLF

[Dow Great Lakes Bay Invitational](#) (LPGA)

TENNIS

[Dow Tennis Classic](#) | Midland, MI

[Division 1 Athletics at CMU](#) | Mt. Pleasant, MI

AMATURE FUN

[BaySail Appledore Tallships](#) | Bay City, MI
[Golf in the Great Lakes Bay Region](#) (GoGreat)
[Golf Central Michigan](#) (regional)
[Greater Midland Curling Center](#) | Midland, MI
[Greater Midland Tennis Center](#) | Midland, MI

CULTURAL CONNECTIONS

[Japanese Cultural Center & Tea House](#) | Saginaw, MI
[Ziibiwing Center of Anishinabe Culture & Lifeways](#) | Mt. Pleasant, MI

LIVE OUTDOOR MUSIC

BAY CITY

Wednesdays in the Park, Wenonah Park
Bandshell, with music starting at 7:00 p.m.

Friday at the Falls, Third Street Waterfall
Park, music starting at 6:00 p.m.

MIDLAND

The Commons Live Music Series, Fridays and
Saturdays running June through October,
Downtown Midland

Tunes by the Tridge, Thursdays at 7:00 p.m.
Downtown Midland

MT. PLEASANT

Max + Emily's Outdoor Concert Series

Soaring Eagle Outdoor Concerts

Other entertainment options with Meet Mt.
Pleasant [here](#).

SAGINAW

Jolt Credit Union Event Park, Saginaw

Jazz on Jefferson, Downtown Saginaw



STREET ART / MURALS

Bay

- Berkshire Hathaway | 919 Saginaw St
- Electric Kitsch, 2106 Kosciuszko Ave.
- Public House | 811 Adams St.
- State Theatre | 913 Washington (Rear lot)
- Third Street Star Bridge / Jakes Bar
- Uptown District
- Veterans Memorial Bridge
- Zef's Coney Restaurant | 201 Third Street

Midland

- Business 10 Overpass @ Saginaw Road
- Circle Auto Parts
- Espresso Milano (rear of building)
- Great Lakes Pharmacy, 1120 Eastman Ave
- Live Oak Coffeehouse
- Midland County Emergency Food Pantry Network, 503 S. Saginaw Road
- Poseyville Bridge Underpass
- Space Midland, 1006 E Carpenter
- Tri-Star Trust (Downtown)
- Upbeat Music Academy 109 E Ashman St
- WhichCraft Taproom (Rear lot)

Mt. Pleasant

- Brass Cafe | 128 S. Main St.
- Downtown Street @ Broadway + Main
- Isabella County Courthouse/Mosher Street
- Pixie Restaurant | 302 N Mission

Saginaw

- Court Street Bridge (under) on River Walk
- Court Street Intersections on Court Street from Michigan Avenue to Fordney Avenue
- Designers 3 Inc, 218 S. Hamilton St.
- Downtown Saginaw Mural on S. Washington + Genesee Streets
- General Top + Trim, 319 S Hamilton St.
- History Mural on Washington and Janes
- Intersection of Hamilton and Cass St (3)
- Prescription Specialists Weinberg-Pankonin Drug Store, 108 N. Michigan at Court St.
- Savoy Bar + Grill at 127 S Franklin St
- Spatz Bakery, 1120 State St
- Wally's Old Fashioned Sandwich Shop
- White's Bar 2609 State Street

ART

Art Dept | Bay City, MI
Art Reach of Mid Michigan | Mt. Pleasant
Counter Culture Arts Collective | Saginaw, MI
Creative 360 | Midland, MI
gingerblue gallery | Saginaw, MI
Imagine That! Artists Co-op | Midland, MI
Midland Center for the Arts | Midland, MI
Parker Lane Art + Design | Midland, MI
Saginaw Art Museum | Saginaw, MI
Studio 23/ The Arts Center | Bay City, MI
University Art Gallery @ CMU | Mt. Pleasant, MI

MUSEUMS

Castle Museum of Saginaw County History | Saginaw, MI
CMU Museum of Cultural and Natural History | Mt. Pleasant
Herbert D. Doan Midland County History Center | Midland, MI
Historical Museum Of Bay County | Bay City, MI
Japanese Cultural Center | Saginaw, MI
Marshall M. Fredericks Sculpture Museum | Saginaw, MI
Saginaw Railway Museum | Saginaw, MI
Ziibiwing Center | Mt. Pleasant, MI

THEATRE

Bay City Players | Bay City, MI
Broadway Theatre | Mt. Pleasant, MI
Midland Center for the Arts | Midland, MI
Pit & Balcony Theatre | Saginaw, MI
State Theatre | Bay City, MI
Temple Theatre | Saginaw, MI



MT. PLEASANT

[Float / paddle the Chippewa River](#)
[Mt. Pleasant Discovery Museum](#)
[Mountain Town Brewing Company](#)
[Soaring Eagle Casino + Hotel](#)
[Soaring Eagle Water Park](#)
[The Jump Station](#)
[Ziibiwing Cultural Center](#)

Check out more at [Meet Mt. Pleasant](#),
[Convention and Visitors Bureau](#)

SAGINAW

[Airborne Adventure Park](#)
[Andersen Enrichment Center and Lucille](#)
[E. Andersen Memorial Rose Garden](#)
[Castle Museum of Saginaw County](#)
[History](#)
[Court Street Theatre](#)
[The Dow Events Center](#)
[Hoyt Park](#)
[Huntington Event Park](#)
[Japanese Cultural Center and Tea House](#)
[Johnny Panther Quest Adventure Trips](#)
[Marshal M. Fredericks Sculpture Museum](#)
[Ojibway Island](#)
[Riverfront Saginaw](#)
[Saginaw Art Museum](#)

OTHER

[Birch Run Premium Outlets](#)
[Frankenmuth Bavarian Inn](#)
[Frankenmuth River Place Shops](#)

BAY

[Appledore Tall Ships / Bay Sail](#)
[Art Around the City - Walking tour](#)
[Bay City State Park](#)
[Bay City Antique Center](#)
[Delta College Planetarium](#)
[Float Paddle Center - Kayak + SUP Rental](#)
[Saginaw Valley Naval Ship Museum](#)
[Self-guided walking tour of historic homes](#)
[Tobico Marsh + Trails](#)
[Wenonah Park + Bandshell](#) for a concert/event

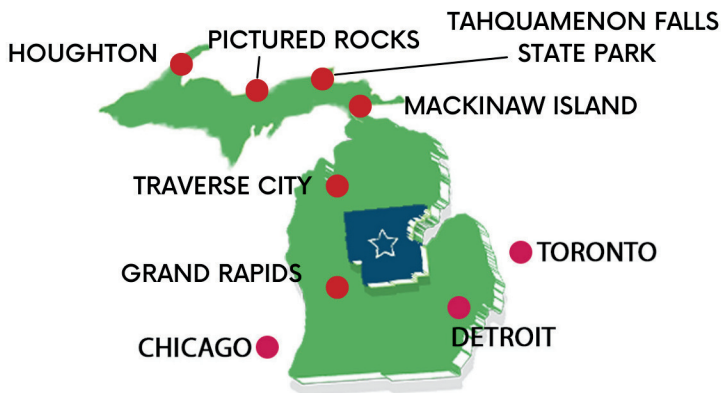
MIDLAND

[Alden B. Dow Home + Studio Tour](#)
[Butterflies in Bloom at Dow Gardens](#)
[Chippewa Nature Center](#)
[City Forest](#)
[Creative 360](#)
[Dow Gardens](#)
[John Pratt Mosaic House](#)
[MidCentury Modern Architecture Tour \(self-guided\)](#)
[Midland Center for the Arts](#)
[Pere Marquette Rail Trail](#)
[Public Arts Midland - Annual events/exhibits](#)
[The Tridge, Downtown Midland](#)
[Whiting Forest at Dow Gardens](#)

GO

The Great Lakes Bay Region is centrally-located, so you're close to some pretty cool places! From the region you can check out some of the following in a short drive:

Chicago ----- 300 miles / 483 km / 5-6 hours
Detroit ----- 100 miles / 161 km / 1.5 hours
Grand Rapids --- 120 miles / 193 km / 2 hours
Mackinaw City --- 200 miles / 322 km / 2.5 hours
Toronto ----- 300 miles / 483 km / 5-6 hours
Traverse City --- 125 miles / 201 km / ~2 hours





Learn more at
www.stempipeline.com

User-friendly
calendar



Explore STEM in the Region

The Great Lakes Bay Region is a STEM Ecosystem! One of the first 25 Ecosystems, there are now more than 100 around the world! There are several opportunities for your kids to enjoy. Check out our STEM Passport Locations and resources in the area below!



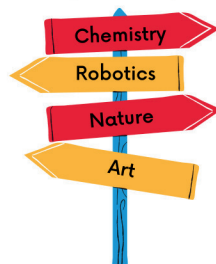
Locations:

- Arenac Community Center
- Bay City State Recreation Area
- Bay County Library System:
 - Alice and Jack Wirt Public Library
 - Auburn Area Branch Library
 - Pinconning Branch Library
 - Historical Sage Library
 - Bookmobile + Outreach Services
- The Historical Museum of Bay County
- Beal City Public Schools
- Beaverton Activity Center
- Castle Museum of Saginaw County
- Chippewa Nature Center
- Clare-Gladwin RESD SPARKS
- CMU Center for Excellence in STEM
- Delta College Planetarium
- Delta Kids/Michigan Learning Channel

- Dow GLBI's STEM Center
- Forest Hill Nature Area, Alma
- Marshall M. Fredericks Sculpture Museum
- Midland Center for the Arts
- Mid-Michigan Children's Museum
- MSU St. Andrews STEAM Education & Research
- Mt. Pleasant Discovery Museum
- Saginaw Children's Zoo
- Saginaw ISD – Hartley Outdoor Education Center
- Shiawassee National Wildlife Refuge/Green Point Nature Center
- Saginaw STEM
- STEM@SVSU
- T.A. Cutler Memorial Library, Saint Louis
- YMCA Camp Timbers



What will you
explore today?





Great Lakes Bay Parents has been informing parents and inspiring families in the Great Lakes Bay Region since 2012! From locating childcare to joining a playdate, finding something to do this weekend this is your website for all-things-parenting in the Great Lakes Bay Region. Learn more at www.greatlakesbayparents.com



Explore Kid + Family-Friendly events in the region!

Great Lakes Bay Parents is your go-to resources for daily activities and events covering five counties in the Great Lakes Bay Region! From things to do, to planning a party, to activities searchable by interest, location and more, to resources for parents, you'll find it here!



Daily Calendar for 5 Counties



9:30 am	Bay City: FREE - Early Learning Playgroup *RSVP @ ISO Career Center
10:00 am	Mt. Pleasant: Toddler Time @ The Jump Station
10:00 am	Midland: Drop-In Jungle Gym (ages 9 - 6) @ Greater Midland Community Center
10:00 am	Bay City: FREE - Playdate (ages 0-4) @ Alice & Jack Wirt Public Library
10:00 am	Saginaw: Dinosaur Dancing (age 1-5) with Music for Munchkins *RSVP @ Saginaw Township Recreation
10:30 am	Mt. Pleasant: Little Sprouts Yoga @ Mt. Pleasant Discovery Museum
10:30 am	Saginaw: FREE - Preschool Storytime @ Butman-Fish Library
10:30 am	Mt. Pleasant: FREE - MUSIC & MOVEMENT @ Veterans Memorial Library
10:30 am	Auburn: FREE - A is for Art: Bubble Art (age 2-5) *RSVP @ Auburn Area Branch Library
10:30 am	Midland: FREE - Discovery Depot: Camping @ Grace A. Dow Memorial Library
11:00 am	Mt. Pleasant: Toddler Time @ The Jump Station
12:00 pm	Midland: Exhibit "Build It!" @ Midland Center for the Arts

Classes/ Sports

Che Ko and Grey Wolf Martial Arts Academies (Midland)

Discipline, Focus, Confidence and Respect. Don't let your child miss out on the opportunity to become an outstanding athlete while becoming physical fit and learn self defense. OFFERS: Lessons Events Summer Camp Kickin' Summer (age 6-15), June 12-16, 10:00am - 12:30pm. Cost: \$100 SOCIAL MEDIA Facebook Visit the Website: CHE KO and [...]

Bay Regional Fencing Alliance (Freeland)

Three Rivers Fencing Club of Midland and Fencing Alliance of Saginaw have joined forces to create Bay Regional Fencing Alliance. We specialize in Olympic style foil, epee, and saber fencing. Offer: Lessons Parties Parties Social Media: FACEBOOK Visit the Website: BAY REGIONAL FENCING ALLIANCE

Serenity Equine Facility (Essexville)

Serenity Equine horseback riding services. Offers: lessons horse rentals for parties unicorn parties horse training special events Visit the website: SERENITY EQUINE

Showtime Gymnastics (Saginaw)

Teaching gymnastics to the Saginaw Valley area! Offers: Classes Gymnastics Tumbling Cheerleading Parent & Me Open Gym Birthday Parties Gymnastics Nerf Gun Dodge Ball Visit the Website: SHOWTIME GYMNASTICS

Major Skate (Bay City)

Local indoor skatepark with skate shop ready to serve you. Offers: Lessons Open skate Shop Social Media: Facebook Visit the website: MAJOR SKATE

AR Workshop Midland

Boilup, DIY Workshop that offers hands-on classes to create charming & custom home decor, wood signs, and more! Classes offered Monday-Sunday each week. Offers: Summer Art Camp 2022 3D Paper & Wood, Car String Art (ages 5-12) on June 13 - 18 AM or PM. Cost: \$210 Tie Dye Week! (ages 5-12) on [...]





The Great Lakes Bay Region has numerous opportunities for professional development and advancement!

From coding, to preparing students for the workforce and more, we can help you further your career and help students prepare for the future. Check out some of the resources available below!

STEM@SVSU

The purpose of STEM@SVSU is to develop a STEM talent pipeline to meet the current and future needs of the region by:

- Delivering Professional Development for STEM Educators
- Engaging STEM Industry Professionals to enhance STEM learning
- Providing Experimental STEM Learning for all grade levels
- Learn more and connect via the QR codes here

STEM@SVSU
SCIENCE • TECHNOLOGY • ENGINEERING • MATH



@STEMatSVSU



@stematvsu



<https://www.svsu.edu/stem/>

Central Michigan University Center for Excellence in STEM Education

CMU's Center for Excellence in STEM Education provides quality STEM education experiences for teacher education students, K-12 students, families, and in-service teachers and schools.

They offer programs that demonstrate the integration of science, technology, engineering, arts, and mathematics through community outreach, student programming, and professional development.



Davenport University Urban Education Partner Program

Davenport University offers bachelor's, master's and certificate programs in urban education to develop culturally responsive teachers and educational leaders. Helping all children succeed academically begins with learning strategies that meet students where they are. Whether you're studying to become an urban educator or school administrator, gain the skills that promote equity, creativity and opportunity for all children through urban education degree programs. Learn more [here](#).

Other Professional Development Opportunities

Gerstacker Fellowship Program

The Gerstacker Fellowship Program was established in 2005 with a \$1.5 million endowment by the Rollin M. Gerstacker Foundation. Its purpose is twofold: to provide a leadership development program for a select group of premier teachers / administrators each year, and create a new cadre of educational leaders throughout the State of Michigan who will increase the quality of K-12 education in their communities.

Graduate Programs in Teaching with SVSU (multiple)



The Great Lakes Bay Region has numerous opportunities for professional development and advancement!

From advancing or retooling your path, the Great Lakes Bay Region has many resources to prepare for the future.

Check out some of the programs available for advancement below!



Central Michigan University

Graduate Programs: With more than 70 graduate programs at the master's, specialist and doctoral levels, it's where you'll do the research, work alongside faculty mentors, and immerse yourself in your subject. Learn more [here](#).

Delta College

Continuing Education Programs: Not everyone who wants to learn is looking for a degree. At Delta, you'll find courses, seminars and certification opportunities to help you grow personally and professionally. Learn more [here](#).

Workforce Training: At Delta College, workforce training solutions for employers (and individuals) are coordinated through the Workforce Strategies office. Delta College Workforce Strategies is the region's recognized leader in workforce training and development. Learn more [here](#).



Northwood University | DeVos Graduate School

Graduate Programs: [The Richard DeVos Graduate School of Management](#) at Northwood University is a specialized business school that develops leaders, managers and entrepreneurs. Learn more [here](#).

Saginaw Valley State University

Graduate Programs: SVSU's has Graduate Programs in health, business, tech, education, and public service. Explore program options, information sessions, and learn more [here](#).





New to the region and looking to connect with others? There are many different community and professional development networks to check out!

From meeting people in your career field or interest, to rotary groups, chambers and more, there is something for everyone in the Great Lakes Bay Region.

Chamber of Commerce

[Bay Area Chamber of Commerce](#)

[Midland Business Alliance](#)

[Mt. Pleasant Area Chamber of Commerce](#)

[Saginaw County Chamber of Commerce](#)

Rotary

[Bay City Morning Rotary](#)

[Bay City Noon Rotary](#)

[Midland Morning Rotary](#)

[Midland Noon Rotary](#)

[Rotary Club of Mt. Pleasant](#)

[Rotary Club of Saginaw](#)

Volunteer

(Numerous opportunities, but United Way is a great place to start)

[United Way of Bay County](#)

[United Way of Gratiot + Isabella Counties](#)

[United Way of Midland County](#)

[United Way of Saginaw County](#)

Young Professionals Networks

[Bay Area Energize YPN](#)

[Mt. Pleasant YPN](#)

[MyPros \(Midland Young Professionals\)](#)

[YPN Saginaw](#)

Connection + Belonging

[Conscious Capitalism of the Great Lakes](#)

[Bay Region](#)

[Disability Network of Mid-Michigan](#)

[Great Lakes Bay Parents](#)

[Great Lakes Bay Pride](#)

[Great Lakes Bay Region Mental Health Partnership](#)

[Great Lakes Bay Region STEM Pipeline](#)

[Great Lakes Bay Theatre Network](#)

[Great Lakes Bay Region Small Business Association](#)

[Midland Area Wellbeing Coalition](#)

[Midland County Inclusion Alliance](#)

[The Arc of Midland \(intellectual + developmental disabilities\)](#)

[Women in Leadership, Great Lakes Bay Region](#)



From dynamic urban settings, to walkable downtowns, to living on the water, to owning acreage in the country, the Great Lakes Bay Region offers numerous living options and price points.

There are too many options to cover here, but we hope to give you a taste of what the region has to offer.

Here's just some of the many options you'll find in the Great Lakes Bay Region!



Waterfront apartments and condos with restaurants and amenities steps from your door.



Options with access to water by living on a local lake or river and enjoying it anytime you want!



Newly built townhomes where everything is taken care of and all you need to do is move in.



Historic architecture with many Mid-Century Modern structures by well-known designers.



Acreage in a more rural setting for spreading out and growing your own food!



Walkable downtowns with many different options for living, working and playing!



Explore in the GLBR

All of our downtowns have wonderful options to explore. If you're looking for something specific not found here, check our their websites or GoGreat.com!





Looking for something you don't see here? We seriously covered just the tip of the iceberg, there is plenty more to do!

Drop us a line and we'd love to help point you in the right direction.



HEMLOCK
PUBLIC SCHOOL DISTRICT

Lela Gronski, Executive Assistant

Email: gronski@hemlockps.com



info@gogreat.com



Meet Mt. Pleasant
Mt. Pleasant Area Convention & Visitors Bureau

Visitor@meetmtp.com

