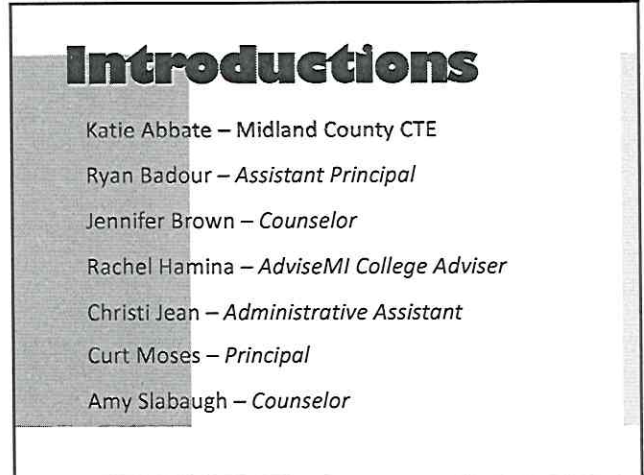
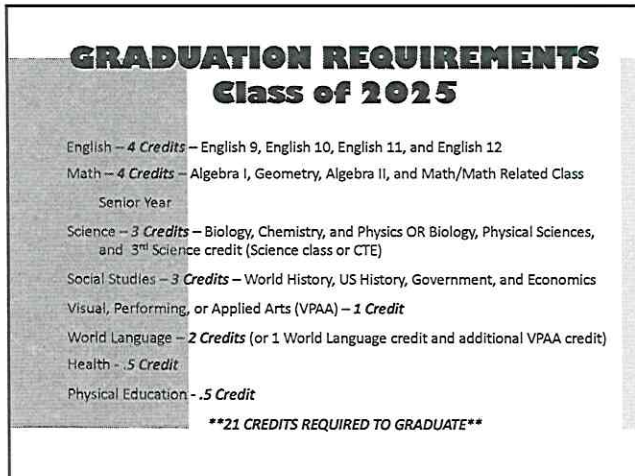




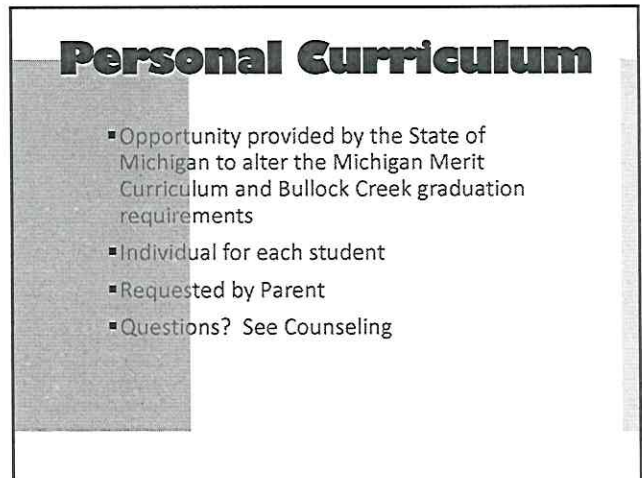
1



2



3



4

## Valedictorian & Salutatorian Honors

- 1 Valedictorian and 1 Salutatorian per graduating class
- In the event that there are ties based on GPA (formula of GPA combined with state approved assessment-SAT) will be used
- Latin Honor System
  - Summa Cum Laude – 3.99 and Above
  - Magna Cum Laude – 3.8 – 3.98
  - Cum Laude – 3.50 – 3.79
- Formula determines Graduation Speakers, Tri-Valley All Academic, and TV-5 Best and Brightest

5

## Planning for Your Future

- Senior Year: 2 Core Classes -- English 12 (or Journalism) and Math or Math-Related Course
- Have you taken PE, Health, and a credit of Visual, Performing and Applied Arts?
- Have you completed your World Language requirement?
- Are all of your 9<sup>th</sup>, 10<sup>th</sup>, and 11<sup>th</sup> grade core class requirements met?
- Many opportunities for BC elective courses that match your career interest
- Job shadowing opportunities

6

## Job Shadowing Opportunities

- Complete the online application
- Students research their career using *Xello*
- Job Shadowing placements are arranged by Midland County ESA
- This is a school-related program – school-related absence
- Coordinator – Yvonne Jackson, [yjackson@midlandesa.org](mailto:yjackson@midlandesa.org)

7

## BC Class Opportunities

- Sciences – Forensics, Human Body Systems, Physiology, and AP Biology
- Math – Trig/Pre Calc, Financial Math, Senior Math, and AP Calc
- Fine Arts – General, Intermediate, Advanced, and Studio Art, Cadet Band, and Varsity Band
- Industrial Technology-Woodworking I-IV, Welding I-IV, Intro to Engineering I, Engineering II, and Construction Trades
- Business – Computers I and II, Web Design I and II

8

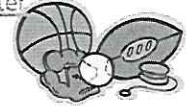
## BC Class Opportunities

- Family and Consumer Science-Educational Careers 1 and 2, Child Development, and Foods and Nutrition
- World Language – Spanish I-IV
- PE/Health – PE 1, PE 2, and Low-Impact PE
- English Electives – Journalism
- Social Studies Electives –Sociology, Psychology, Current Events

9

## Athletic Eligibility NCAA and NAIA

- Students must apply to NCAA or NAIA Clearinghouse to determine if they are academically eligible to participate in college sports
- Recommendation to apply online during spring of junior year
- [ncaa.org/eligibilitycenter.org](http://ncaa.org/eligibilitycenter.org) or [naia.org/eligibility-center](http://naia.org/eligibility-center)



10

## Michigan Merit Exam

- State Assessment for Juniors
- April 10, 11, and 16
- 3 Components: SAT; ACT WorkKeys; and M-Step
- Requirement for graduation
- Study materials available at [www.meritboard.org](http://www.meritboard.org), [www.act.org](http://www.act.org), and [www.mstepacademy.org](http://www.mstepacademy.org)

11

## Planning for Senior Year and Beyond

- Senior Newsletter – Sent home first week of school
- SAT/ACT Registration Deadlines
- Ordering Cap & Gowns, Announcements, etc.
- Transcripts – Order through Parchment, [www.parchment.com](http://www.parchment.com)



12

## College Adviser

Rachel Hamina, MCAN College Adviser

- College Application Month
- Financial Aid Initiative
- Scholarships – Michigan Achievement
- Decision Day
- Individual Meetings with Students/Parents

13

## FINANCIAL AID

- FAFSA – Free Application for Federal Student Aid
- Opens up October 1, 2024
- Deadline to apply is May 1, 2025



14

## SCHOLARSHIPS

- Awarded to students based on academics, athletics, financial need, volunteerism, color of your hair, etc.
- Michigan Achievement Scholarship
- Apply early and to as many as possible...watch deadlines
- Class of 2025 Google Classroom, Midland Area Community Foundation, Bullock Creek Website, Scholarship Websites, Parent's Place of Employment, etc.
- Scholarship Scams

15

## Off-Campus Programs

- Career & Technical Education CTE
- Dual Enrollment
- Work-Based Learning/Co-op
- REQUIREMENTS:
  - Application and Permission Slip
  - Minimum 2.0 GPA and good attendance
  - Prerequisites may be needed
  - Criteria for dual enrollment
  - Provide own transportation \*\*
- GRADING: With the exception of Co-op, off campus programs earn a letter grade on transcript and are factored into GPA

16



## Midland County CTE Programs

- Katie Abbate, Midland County ESA
- Classes offered at Midland Public Schools, Coleman High School, Meridian High School and GMCA,
- Based on availability and meeting scheduling needs

17

## CTE at BCCHS

- Construction Tech
- Educational Careers
- Woodworking

\*Application needed for these programs too

18

## Dual Enrollment

- Opportunity to earn college credit while still in high school
- Criteria for eligibility...uses PSAT or SAT Scores along with grades and attendance
- Classes offered at Delta, SVSU, CMU, Northwood, Davenport, and Mid-Michigan Community College, and beyond
- Tuition covered up to \$725/class (2023-2024 rate)
- Transportation responsibility of student.
- **Failing or withdrawing from a class requires reimbursement for tuition and fees to BC.**
- Dual enrollment classes earn a letter grade on transcript and are factored into GPA, unless otherwise declared in writing prior to the start of the semester

19

## Work Based Learning

- Senior Program
- Must have at least 17 credits entering senior year
- Create a Portfolio – Cover Letter, Resume, Letter of Recommendation, Transcript, Certificates, Awards
- Complete an application
- Packet of information/handbook available
- This is a pass/fail program. Credit (CR) is received towards graduation if successfully completed. Students **WILL NOT** receive a letter grade, which may affect their class standing

20

## WORK PERMITS

- 14, 15, 16, 17 years old need one
- Available from Mrs. Kalina
- Summer vacation – see Main Office



21

## Next Steps

- *January 30* - Met with Class of 2025 students
  - Watch for GOLD Schedule Request Sheet that needs to be signed
- *February 9* - Signed Request Sheets due to Counseling Center
- *February 9* - All CTE, Dual Enrollment, Permission Slips, and Online Applications are Due
- *March 1* - Journalism Applications Due

22

## QUESTIONS?

- **Katie Abbate** – [kabbate@midlandesa.org](mailto:kabbate@midlandesa.org)
- **Jennifer Brown** – 989.631.2418 ext. 1507
  - [@bcreek.org](mailto:jbrown@bcreek.org)
- **Rachel Hamina** – 989.631.2418 ext. 1508
  - [@bcreek.org](mailto:rhamina@bcreek.org)

23