



**New Canaan Public Schools  
New Canaan, CT**

**School Year 2023-24 Enrollment Projection Report**

*Copyright, New England School Development Council, 2023*

# Table of Contents

Section	Page
Enrollment Summary.....	1
Historical Enrollment Table.....	2
Historical Enrollment Graph.....	3
Projected Enrollment Table.....	4
Projected Enrollment Graph.....	5
Historical & Projected Enrollment Graph.....	6
Historical & Projected Enrollment in Grade Combinations Line Graph.....	7
Historical & Projected Enrollment in Grade Combinations Stacked Column Graph.....	8
Birth to Kindergarten Relationship Graph.....	9
Additional Information .....	10
New England's PK-12 Enrollment Trends.....	11
Methodology, Reliability and Use of this Document.....	12

# Enrollment Summary

NESDEC is pleased to send you this report displaying the past, present, and projected enrollments for your District. It is important to update enrollment projections every year to identify changes in enrollment patterns. Ten-year projections are designed to provide your District with yearly, up-to-date enrollment information that can be used by boards and administrators for effective planning and allocation of resources.

Included in this report are graphs representing historical and projected grade-by-grade enrollments, as well as historical and projected enrollments in grade combinations. We received the enrollment data from the District, and we assume that the method of collecting this data has been consistent from year to year.

Enrollment projections are more reliable in Years #1-4 in the future and less reliable in the “out-years.” Projections six to ten years out may serve as a guide to future enrollments and are useful for planning purposes. In light of this, NESDEC has added a “Spring Update Refresher” enrollment projection at no cost to affiliates. For more information, please refer to the Methodology, Reliability and Use of this Document section.

The NESDEC enrollment projection fell within 25 students of the K-12 total, 4,068 students projected vs. 4,043 enrolled.

Births increased by 19 from a previous ten-year average of 145 to a projected average of 164, which could lead to an increase in Kindergarten enrollments in the future. In most districts, Grades 1-8 are very stable in enrollments. However, there have been increases in 7 of the 8 most recent years, leading to a net increase averaging 25 students per year.

Over the next three years, Grades K-4 enrollments are projected to increase by 119 students, Grades 5-8 enrollments are projected to increase by 9 students and Grades 9-12 enrollments are projected to decrease by 63 students, as students move through the grades.

# Historical Enrollment

School District: New Canaan, CT

10/12/2023

Historical Enrollment By Grade																			
Birth Year	Births*	School Year	PK	K	1	2	3	4	5	6	7	8	9	10	11	12	UNGR	K-12	PK-12
2008	159	2013-14	42	270	331	302	347	311	362	316	317	319	348	291	307	319	0	4140	4182
2009	138	2014-15	35	302	290	355	321	357	304	370	312	306	317	342	279	313	0	4168	4203
2010	142	2015-16	43	285	321	299	353	336	344	308	371	306	315	319	332	285	0	4174	4217
2011	174	2016-17	36	273	299	338	315	356	331	353	303	374	312	316	308	332	0	4210	4246
2012	142	2017-18	41	276	297	316	329	314	341	337	351	302	378	312	316	313	0	4182	4223
2013	145	2018-19	46	233	285	325	315	336	297	357	330	350	294	371	302	318	0	4113	4159
2014	144	2019-20	39	308	266	287	331	323	329	313	358	327	359	295	367	309	0	4172	4211
2015	135	2020-21	46	264	321	275	288	337	321	346	318	357	330	347	287	385	0	4176	4222
2016	138	2021-22	50	255	280	332	284	303	347	327	343	309	355	320	329	285	0	4069	4119
2017	136	2022-23	49	289	272	305	337	288	307	352	325	331	317	335	315	327	0	4100	4149
2018	130	2023-24	52	278	304	289	307	346	291	301	351	318	306	320	322	310	0	4043	4095

\*Birth data provided by Public Health Vital Records Departments in each state.

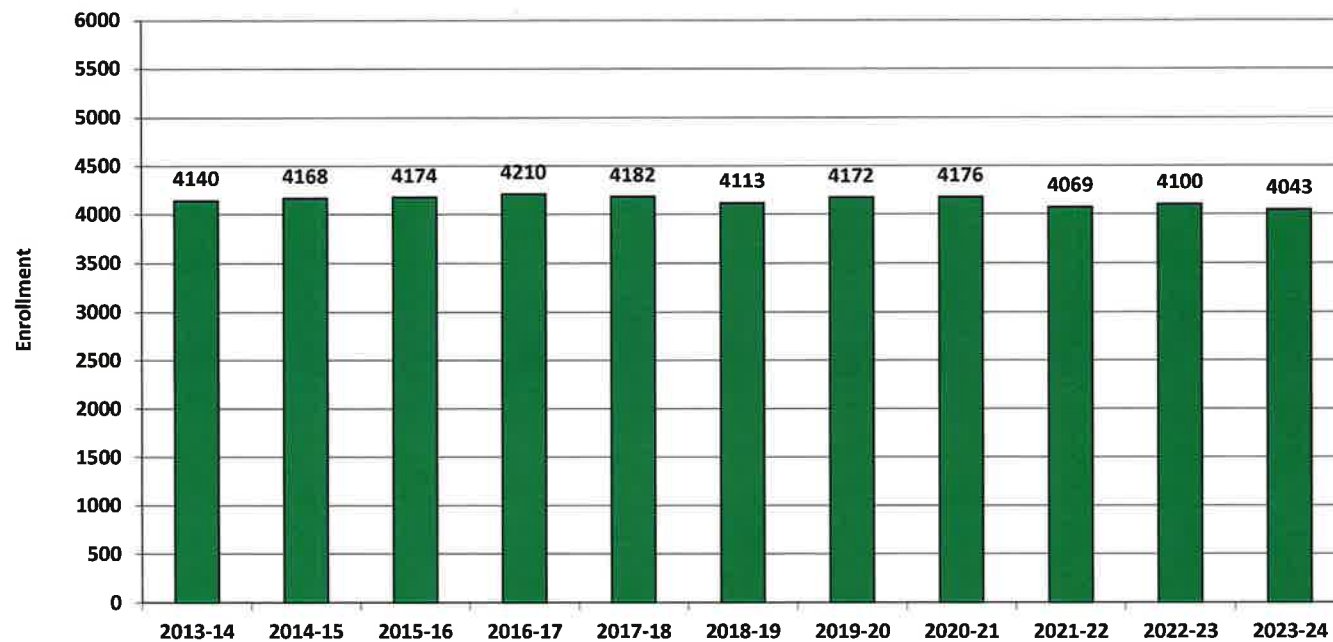
\*\* < 10 Not reported, to protect subgroups with fewer than 10 students.

Historical Enrollment in Grade Combinations									
School Year	PK-4	K-4	PK-8	K-8	5-8	6-8	7-8	5-12	9-12
2013-14	1603	1561	2917	2875	1314	952	636	2579	1265
2014-15	1660	1625	2952	2917	1292	988	618	2543	1251
2015-16	1637	1594	2966	2923	1329	985	677	2580	1251
2016-17	1617	1581	2978	2942	1361	1030	677	2629	1268
2017-18	1573	1532	2904	2863	1331	990	653	2650	1319
2018-19	1540	1494	2874	2828	1334	1037	680	2619	1285
2019-20	1554	1515	2881	2842	1327	998	685	2657	1330
2020-21	1531	1485	2873	2827	1342	1021	675	2691	1349
2021-22	1504	1454	2830	2780	1326	979	652	2615	1289
2022-23	1540	1491	2855	2806	1315	1008	656	2609	1294
2023-24	1576	1524	2837	2785	1261	970	669	2519	1258

Historical Percentage Changes			
School Year	K-12	Diff.	%
2013-14	4140		
2014-15	4168	28	0.7%
2015-16	4174	6	0.1%
2016-17	4210	36	0.9%
2017-18	4182	-28	-0.7%
2018-19	4113	-69	-1.6%
2019-20	4172	59	1.4%
2020-21	4176	4	0.1%
2021-22	4069	-107	-2.6%
2022-23	4100	31	0.8%
2023-24	4043	-57	-1.4%
Change		-97	-2.3%

## Historical Enrollment

Grades K-12, School Years 2013-14 to 2023-24







# Projected Enrollment

School District: New Canaan, CT

10/12/2023

Enrollment Projections By Grade*																				
Birth Year	Births*		School Year	PK	K	1	2	3	4	5	6	7	8	9	10	11	12	UNGR	K-12	PK-12
2018	130		2023-24	52	278	304	289	307	346	291	301	351	318	306	320	322	310	0	4043	4095
2019	157		2024-25	52	298	295	320	294	316	352	294	299	341	314	298	309	319	0	4049	4101
2020	137		2025-26	52	260	316	311	326	302	322	356	292	291	337	306	287	306	0	4012	4064
2021	201	(prov.)	2026-27	53	382	276	333	317	335	307	325	354	284	288	328	295	284	0	4108	4161
2022	176	(prov.)	2027-28	53	334	405	291	339	326	341	310	323	344	281	281	316	292	0	4183	4236
2023	160	(est.)	2028-29	53	304	354	427	296	348	332	344	308	314	340	274	271	313	0	4225	4278
2024	166	(est.)	2029-30	54	316	322	373	435	304	354	335	342	299	310	331	264	268	0	4253	4307
2025	168	(est.)	2030-31	54	319	335	339	380	447	309	358	333	332	296	302	319	261	0	4330	4384
2026	174	(est.)	2031-32	54	331	338	353	345	391	455	312	356	324	328	288	291	316	0	4428	4482
2027	169	(est.)	2032-33	54	321	351	356	359	355	398	460	310	346	320	320	278	288	0	4462	4516
2028	168	(est.)	2033-34	54	318	340	370	362	369	361	402	457	301	342	312	309	275	0	4518	4572

Note: Ungraded students (UNGR) often are high school students whose anticipated years of graduation are unknown, or students with special needs - UNGR not included in Grade Combinations for 7-12, 9-12, etc.

\*Birth data provided by Public Health Vital Records Departments in each state.

Based on an estimate of births

Based on children already born

Based on students already enrolled

\*\* < 10 Not reported, to protect subgroups with fewer than 10 students.

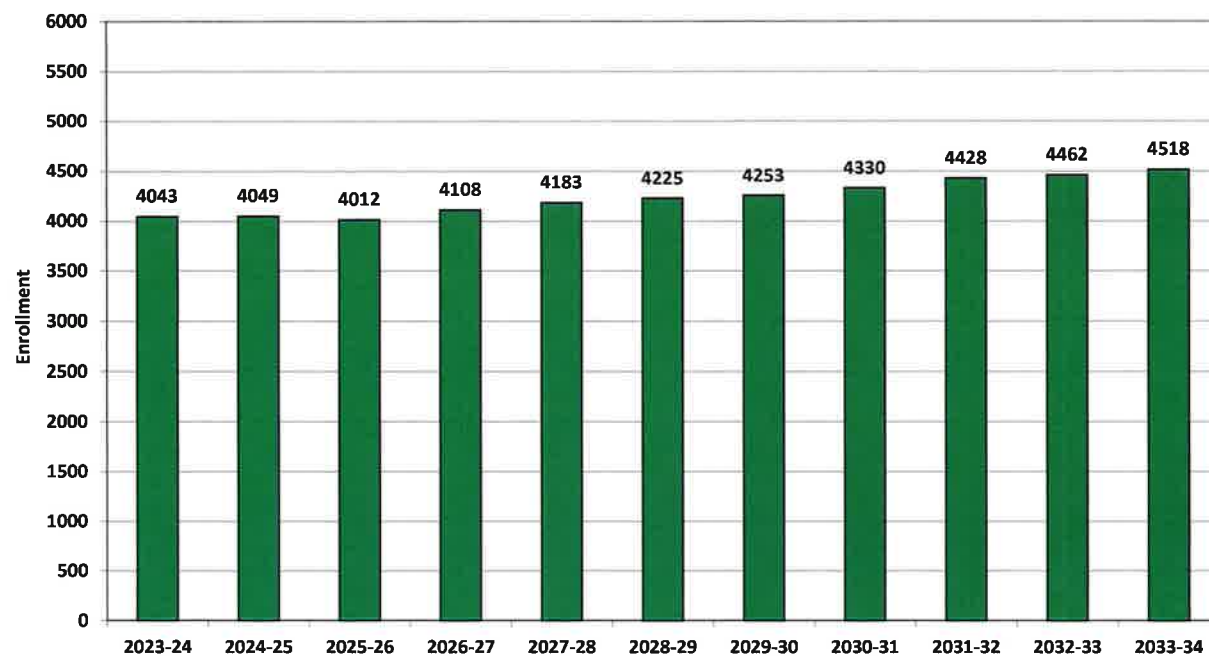
Projected Enrollment in Grade Combinations*									
School Year	PK-4	K-4	PK-8	K-8	5-8	6-8	7-8	5-12	9-12
2023-24	1576	1524	2837	2785	1261	970	669	2519	1258
2024-25	1575	1523	2861	2809	1286	934	640	2526	1240
2025-26	1567	1515	2828	2776	1261	939	583	2497	1236
2026-27	1696	1643	2966	2913	1270	963	638	2465	1195
2027-28	1748	1695	3066	3013	1318	977	667	2488	1170
2028-29	1782	1729	3080	3027	1298	966	622	2496	1198
2029-30	1804	1750	3134	3080	1330	976	641	2503	1173
2030-31	1874	1820	3206	3152	1332	1023	665	2510	1178
2031-32	1812	1758	3259	3205	1447	992	680	2670	1223
2032-33	1796	1742	3310	3256	1514	1116	656	2720	1206
2033-34	1813	1759	3334	3280	1521	1160	758	2759	1238

Projected Percentage Changes			
School Year	K-12	Diff.	%
2023-24	4043	0	0.0%
2024-25	4049	6	0.1%
2025-26	4012	-37	-0.9%
2026-27	4108	96	2.4%
2027-28	4183	75	1.8%
2028-29	4225	42	1.0%
2029-30	4253	28	0.7%
2030-31	4330	77	1.8%
2031-32	4428	98	2.3%
2032-33	4462	34	0.8%
2033-34	4518	56	1.3%
Change	475	11.7%	

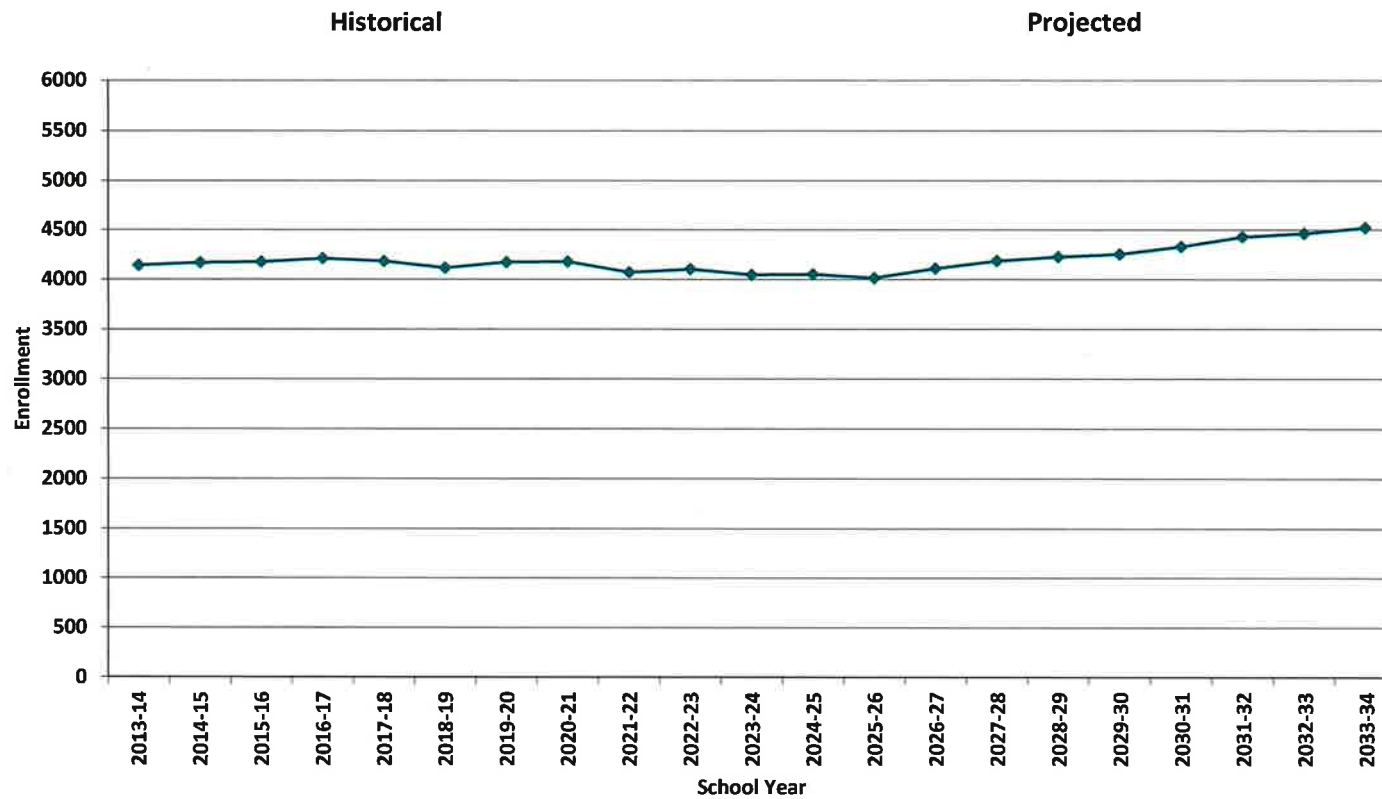
\*Projections should be updated annually to reflect changes in in/out-migration of families, real estate sales, residential construction, births, and similar factors.

# **Projected Enrollment**

**Grades K-12, School Years 2023-24 to 2033-34**

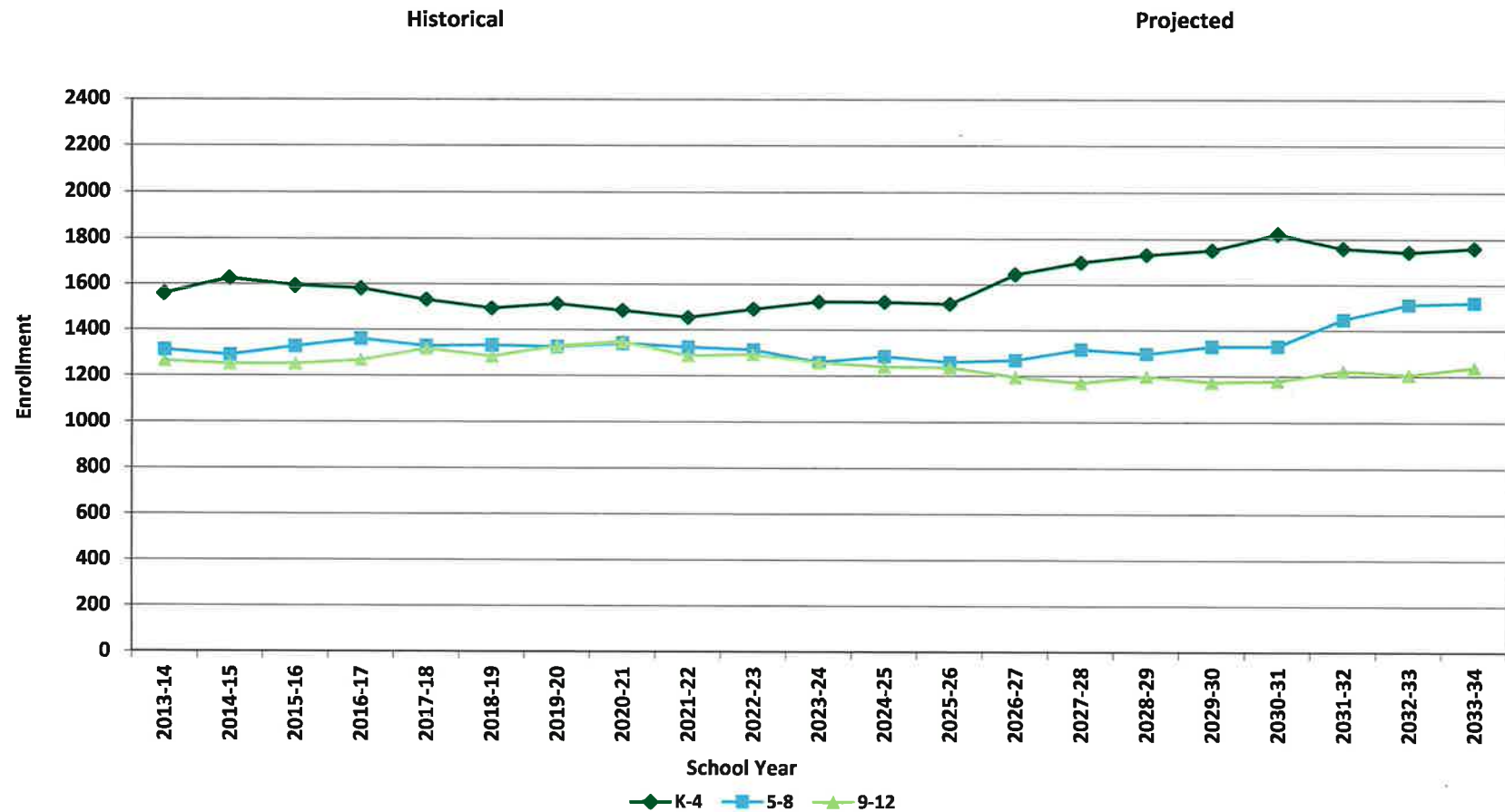


## Historical & Projected Enrollment

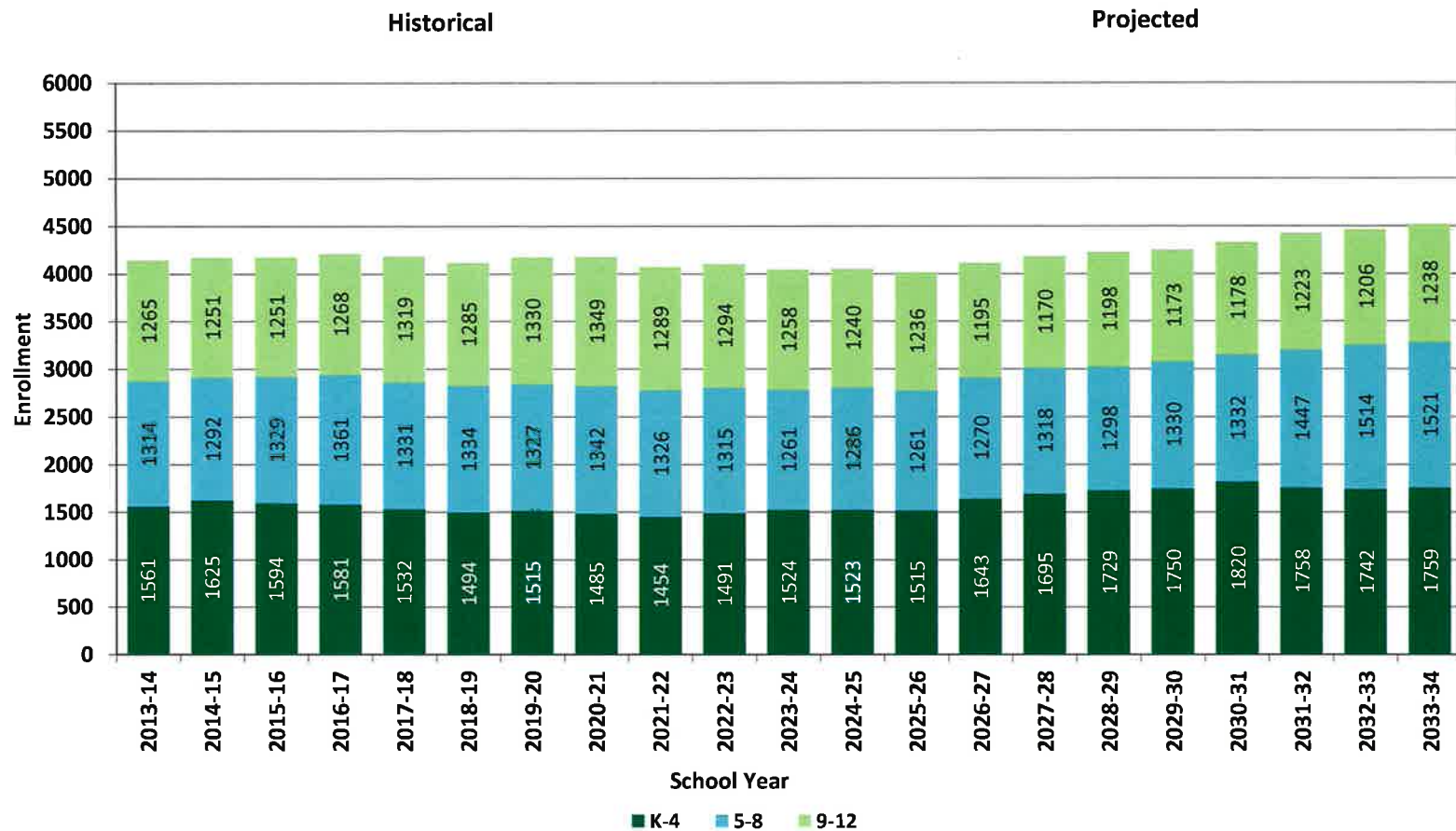




# **Historical & Projected Enrollments in Grade Combinations**

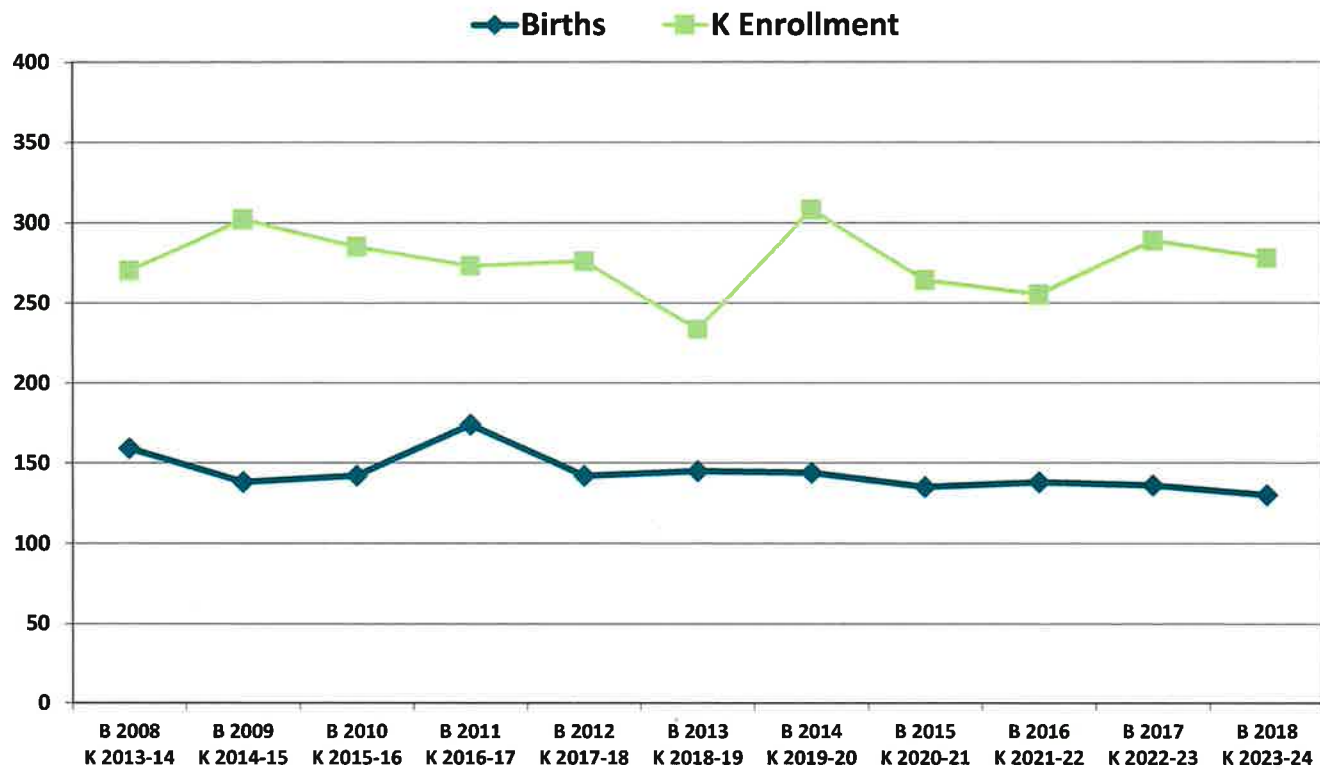


# Historical & Projected Enrollments in Grade Combinations



**NESDEC**

# Birth-to-Kindergarten Relationship



## Additional Information

Building Permits Issued (Source: HUD)		
Year	Single-Family	Multi-Units
2019	9	2
2020	16	60
2021	26	0
2022	56	2
2023	13 to date	0 to date

School Year	9 - 12 CTE	K - 12 Non-Public	K - 12 Choice-In	K - 12 Choice-Out	K - 12 Out-of-District SPED	K - 12 Homeschool
2019-20	n/a	502	48	0	13	0
2020-21	n/a	388	53	0	14	0
2021-22	n/a	351	49	0	14	< 10 **
2022-23	n/a	351	50	0	14	0
2023-24	n/a	355	53	0	11	0

\*The above data was provided by the District, with the exception of building permit data (provided by HUD).

"n/a" signifies that information was not provided by District.

\*\* < 10 Not reported, to protect subgroups with fewer than 10 students.

## New England's PK-12 Enrollments Trends

From 2021 to 2030, the US Department of Education anticipates changes in PK-12 enrollment of -3.2% in the South, -6.0% in the West, -3.9% in the Midwest, -6.0% in the Northeast, and a total of -4.4% nationwide.

State	Fall 2021 PK - 12	Fall 2030 Projected	PK-12 Decline	% Change 2021-2030
USA	49,452,864	47,252,500	-2,200,364	-4.4%
CT	508,686	475,600	-33,086	-6.5%
ME	173,215	161,800	-11,415	-6.6%
MA	921,180	879,900	-41,280	-4.5%
NH	170,005	144,600	-25,405	-14.9%
RI	138,566	130,200	-8,366	-6.0%
VT	83,975	74,600	-9,375	-11.2%

**Source:** U.S. Department of Education, National Center for Education Statistics,  
Enrollment in public elementary and secondary schools, by region, state,  
and jurisdiction: Selected years, fall 1990 through fall 2030, Table 203.20, March 2023.

Although most New England Districts are seeing a decline in the number of births, NESDEC's experience indicates that the impact on enrollment varies from District to District. Almost half of New England Districts have been growing in PK-12 enrollment, and a similar number are declining (often in rural areas), with the other Districts remaining stable.





## Methodology, Reliability and Use of this Document

### PROJECTION METHODOLOGY

Cohort component (survival) technique is a frequently used method of preparing enrollment forecasts. NESDEC uses this method, but modifies it in order to move away from forecasts that are wholly computer- or formula-driven. Such modification permits the incorporation of important, current district-specific demographic information into the generation of enrollment forecasts (such as in/out-migration of students, resident births, HUD-reported building permits, etc.). Percentages are calculated from the historical enrollment data to determine a reliable percentage of increase or decrease in enrollment between any two grades. For example, if 100 students enrolled in Grade 1 in 2022-23 increased to 104 students in Grade 2 in 2023-24, the percentage of survival would be 104%, or a ratio of 1.04. Ratios are calculated between each pair of grades or years in school over several recent years.

After study and analysis of the historical ratios, and based upon a reasonable set of assumptions regarding births, migration rates, retention rates, etc., ratios most indicative of future growth patterns are determined for each pair of grades. The ratios thus selected are applied to the present enrollment statistics to project into future years. The ratios are the key factors in the reliability of the projections, assuming validity of the data at the starting point.

### RELIABILITY OF ENROLLMENT PROJECTIONS

Projections can serve as useful guides to school administrators for educational planning. Enrollment projections are more reliable in Years #1-4 in the future and less reliable in the "out-years." Projections six to ten years out may serve as a guide to future enrollments and are useful for planning purposes, but they should be viewed as subject to change given the likelihood of potential shifts in underlying assumptions/trends, such as student migration, births as they relate to Kindergarten enrollment, and other factors.

- ★ Projections that are based upon **the children who already are in the district** (the current K-12 population only) will be the most reliable. The second level of reliability will be for those children already **born into the community but not yet old enough to be in school**. The least reliable category is the group for which an estimate must be made to **predict the number of births**, thereby adding additional uncertainty. See these three multi-colored groupings on the "Projected Enrollment" tab.

Annual updates allow for early identification of recent changes in historical trends. When the actual enrollment in a grade is significantly different (higher or lower) from the projected number, it is important (yet difficult) to determine whether this is a one-year aberration or whether a new trend may have begun. **In light of this possibility, NESDEC urges all school districts to have updated enrollment forecasts developed by NESDEC each October.** This service is available at no cost to affiliated school districts.

### USING THIS INFORMATION ELECTRONICALLY

If you would like to extract the information contained in this report for your own documents or presentations, you can use screenshots, which can be inserted into PowerPoint slides, Word documents, etc. Because screenshots create graphics, the image is not editable. Please feel free to contact us if you need assistance in this matter, by phone (508-481-9444) or by email ([ep@nesdec.org](mailto:ep@nesdec.org)).