



2024 Bond Proposal

May 7, 2024

What is on the May 7th ballot?

THREE KEY AREAS OF FOCUS

- 1 Safety And Security Upgrades
- 2 Infrastructure Upgrades
- 3 Upgrades To Support Modernizing Educational Settings And New Programming

ZERO INCREASE over current debt millage rate.

Total program cost \$361.3 million



How was this plan developed?



- 2023-2028 Strategic Plan adopted in December 2022
- Strategic Plan called for analysis of Enrollment, Building Utilizations and Building Assessment
- Plante Moran Realpoint was hired resulting in recommendations for consolidation, closure and repurposing of various school buildings; continued upkeep of existing buildings; and a focus on meeting changing programs/future needs of students

15 months
OF ANALYSIS

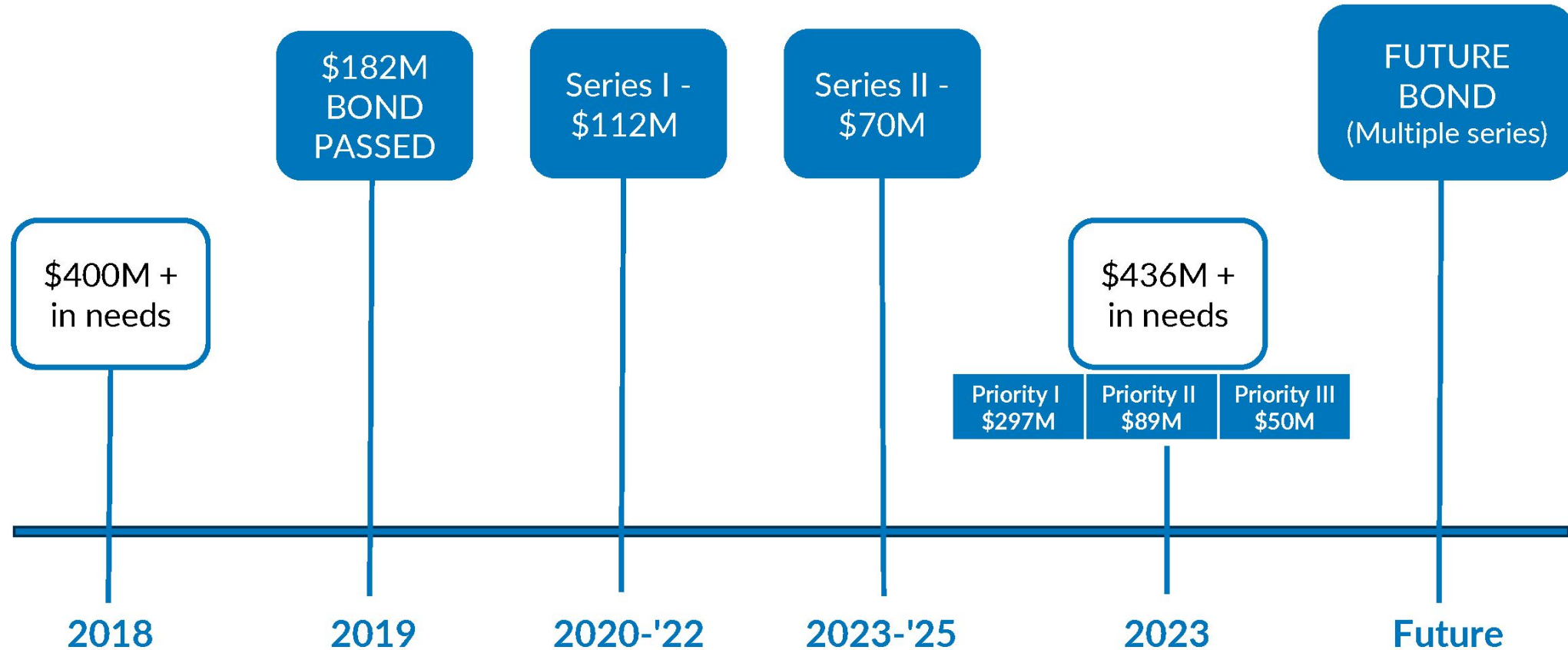
130 people
ENGAGED

Unanimous
BOARD SUPPORT



May 2024 Ballot Proposal received full Board Support

Identifying Needs



Why Now?

Rare position to sell bonds at a zero increase to the current debt millage rate, while being able to address critical infrastructure & program needs

Ø ZERO
tax rate increase



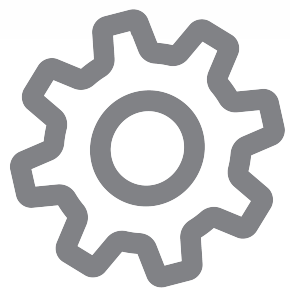
Features of Bond 2024



Safety & Security

- Replacement of exterior doors
- Replacement of windows utilizing newest technologies in glass replacement
- Replacement of fire alarm systems
- Technology security upgrades
 - Replace and expand video cameras
 - Expand door access control for additions/renovations
 - Emergency alert system
 - Improve PA systems
 - Replace staff radios
- Replacement of aging buses





Infrastructure Upgrades

- Remodel student, staff, and community restrooms
- Replace drinking water pipes, hot water heaters, and water softener systems
- Site upgrades where needed (parking lots, septic, drainage, playgrounds)
- Interior door and window upgrades
- Upgrades/replacement to mechanical systems (HVAC, etc.)



- Upgrade electrical infrastructure to support technology
- Roof replacements
- Remodel kitchens
- Classroom upgrades where needed (casework, walls, flooring, lockers)
- Upgrades to high school competition pool locker rooms
- Specialty classroom upgrades where needed (science, special education, arts, gym)

What is AI's Impact?

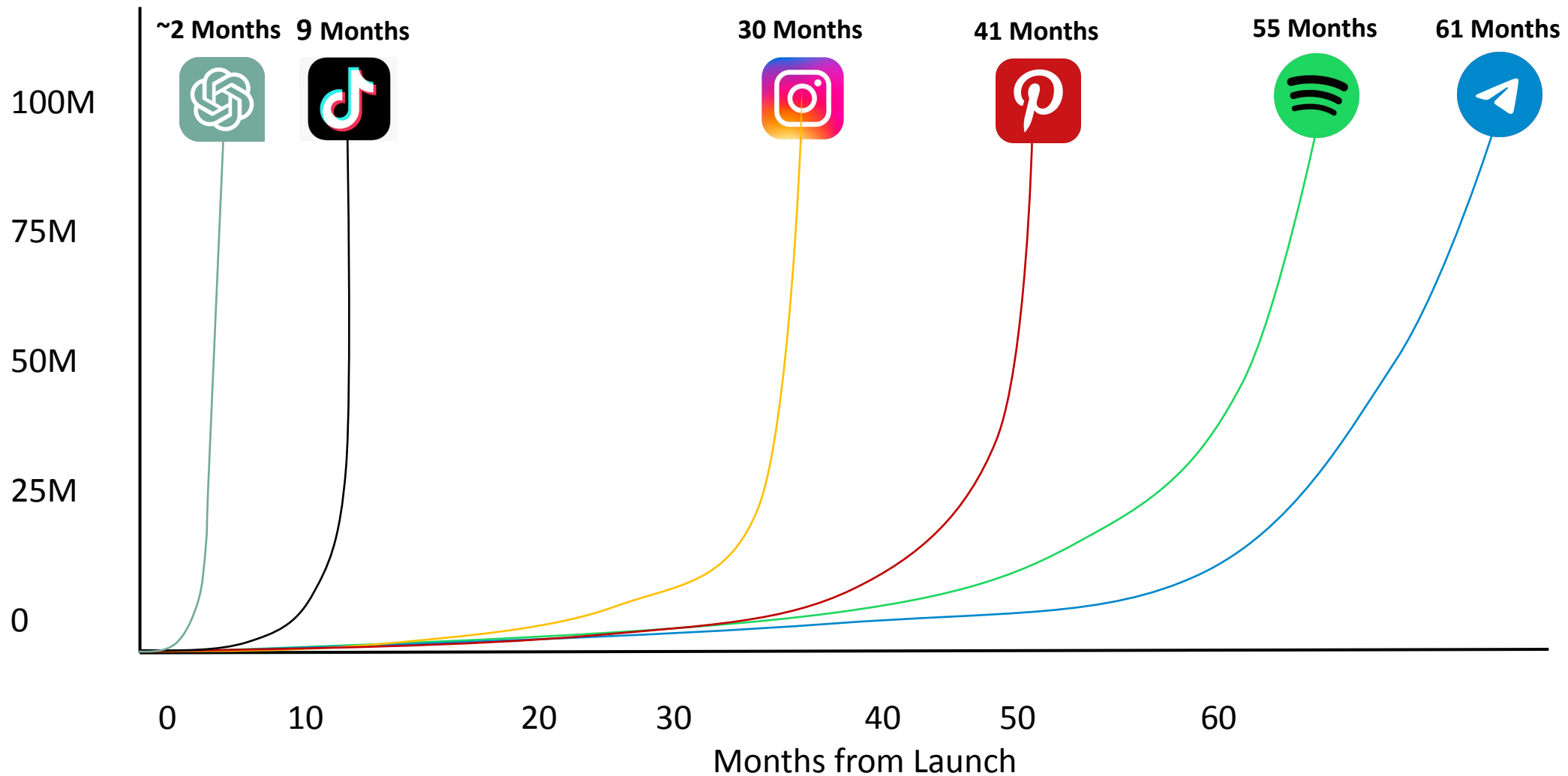
- By 2025, 95% of customer interactions will be powered by AI. (Servion Global Solutions)
- AI is expected to contribute \$15.7 trillion to the global economy by 2030. (PwC Global)
- The rise of AI will eliminate 85 million jobs and create 97 million new ones by 2025. (World Economic Forum)
- In the healthcare industry, 38% of providers use computers as diagnosis assistants. (Gartner)
- The self driving car industry could be worth more than \$600 billion over the next five years. (MarketWatch)

Humans still needed for...

- Ensuring quality and reliability
- Protecting data privacy and security
- Ensuring equitable access
- Mitigating bias



Path to 100 Million Users (stylized)





Student Programs



TECHNOLOGY

- Technology upgrades at every level



MIDDLE SCHOOL

- Construct a middle school building on the Milford High School Campus
- Transformation of the existing White Lake Middle School to provide equity of spaces/programs for all MS students



HIGH SCHOOL

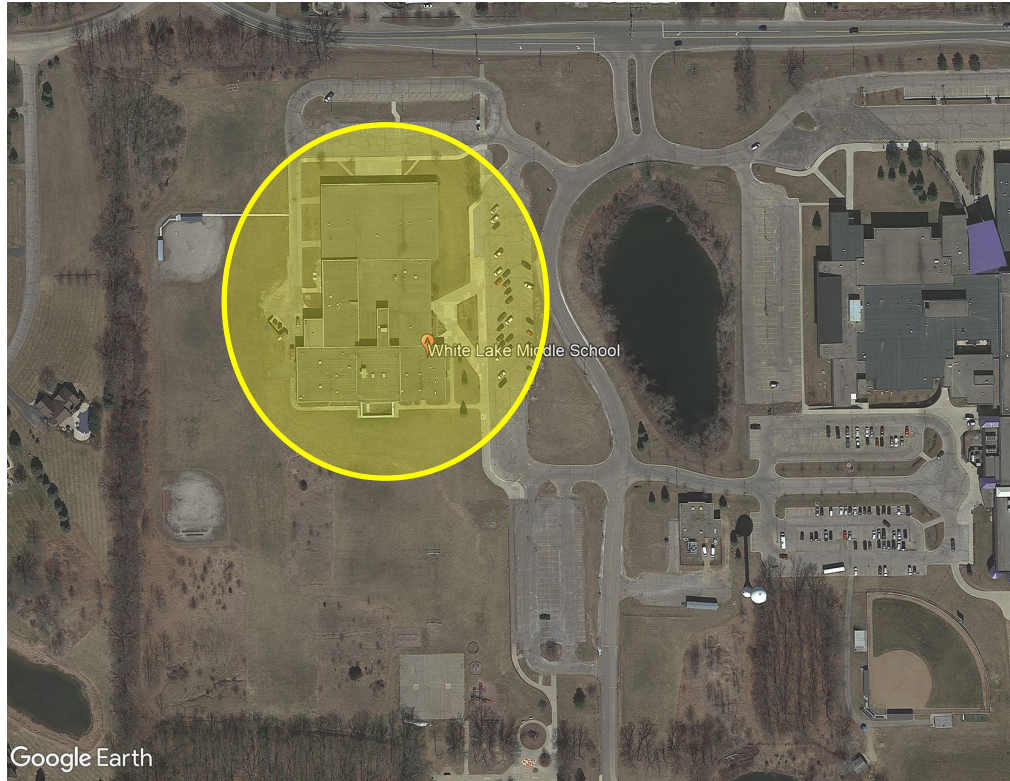
- CTE / STEM / Robotics / Core and Elective subject area enhancements
- Upgrades to our High School Centers for Performing Arts (seating, orchestra pit covers, lighting and sound controls, etc.)
- Musical instruments and equipment
- Athletic improvements, including synthetic turf for varsity baseball and varsity softball fields, athletic equipment, and new pressbox at Lakeland High School

Technology Upgrades Districtwide

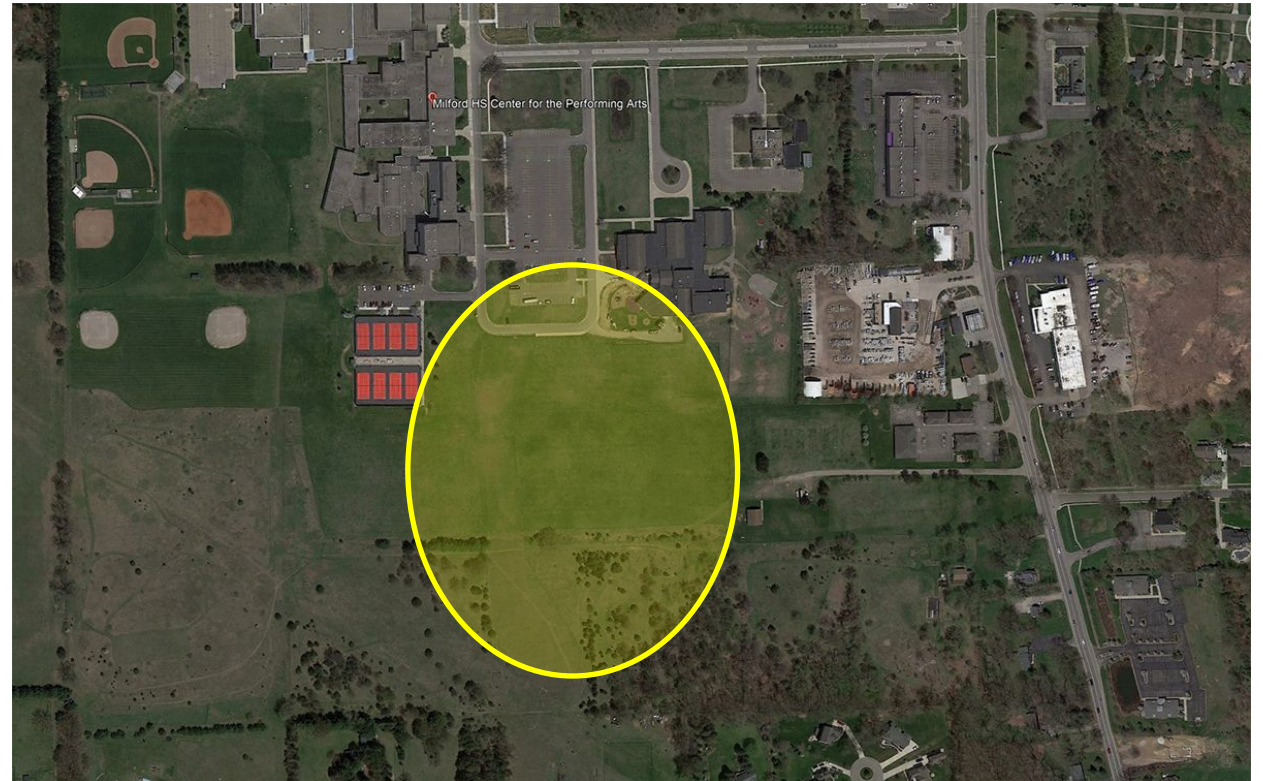
- Replace staff and student computers
- Continue student 1:1 Chromebooks
- Replace classroom interactive displays
- Replace classroom sound amplification systems
- Replace classroom document cameras
- Equipment for STEM and collaboration spaces
- Sound systems for gyms and cafeterias
- Replace video production equipment
- Replace network and wireless infrastructure for speed and capacity
- Update 30-year-old fiber cabling between buildings
- Replace data center equipment
- Replace phone system
- Install infrastructure and equipment related to building additions and renovations



Middle School Upgrades



Transformation of White Lake Middle School



Construct a middle school on the Milford Campus

Goals for Creating MS/HS campuses

- Sharing of staff and resources between MS and HS including core and elective offerings particularly in the CTE, world language, and fine arts programs
- Cost savings in Transportation, as well as, Maintenance and Operations
- Benefits to delayed start times and earlier end times
- Sharing of innovative spaces such as a future Science, Technology, Engineering and Mathematics (STEM) lab, performing arts, athletic spaces, etc.
- Parity on both sides of the district/equitable opportunities for all students
- Increased mentoring opportunities between HS and MS students

White Lake Middle School Transformation



Middle School on Milford Campus



ARTIST RENDERINGS

What could our interior spaces look like?



Pictures depict what our middle school interior environments could look like with renovated and new spaces.

High School Upgrades



Academics

ENHANCEMENTS TO:

- CTE
- STEM
- Robotics
- Core and Elective Subject Areas



Arts

- Upgrades to Center for Performing Arts at both high schools (seating, orchestra pit covers, lighting and sound controls, etc.)
- Musical instruments and equipment



Athletics

- Synthetic turf for varsity baseball and varsity softball fields
- Athletic equipment
- New press box at Lakeland HS

Key Dates

- **March 28, 2024** – Absentee voter ballots are available
- **April 22, 2024** – Last day for voters to register to vote by mail
- Final day to vote absentee is 8:00 pm on Election Day
- **May 4, 2024**, and/or May 5, 2024 – Election clerk offices must be open for at least eight hours to issue and receive absent voter ballots
- **May 7, 2024** – **Election day**, polls open from 7:00 a.m. to 8:00 p.m.



Early Voting for May 7th Election

- Early voting is open nine (9) consecutive days beginning on the second Saturday before the election and ending on the Sunday before the election. Early voting is from 8:30 a.m. to 4:30 p.m. except on Thursday when the hours are noon to 8:00 p.m.
- Early voting locations include:

Milford & White Lake Voters

Lyon Township
58000 Grand River
New Hudson, MI 48165

All Oakland County Voters

Waterford Oaks Activity Center
2800 Watkins Lake Rd
Waterford, MI 48328

Highland Township Voters

Highland Township Hall
205 N John St,
Highland Charter Twp, MI 48357

For more information



**Please direct any
Bond 2024 questions to
Communications@hvs.org.**