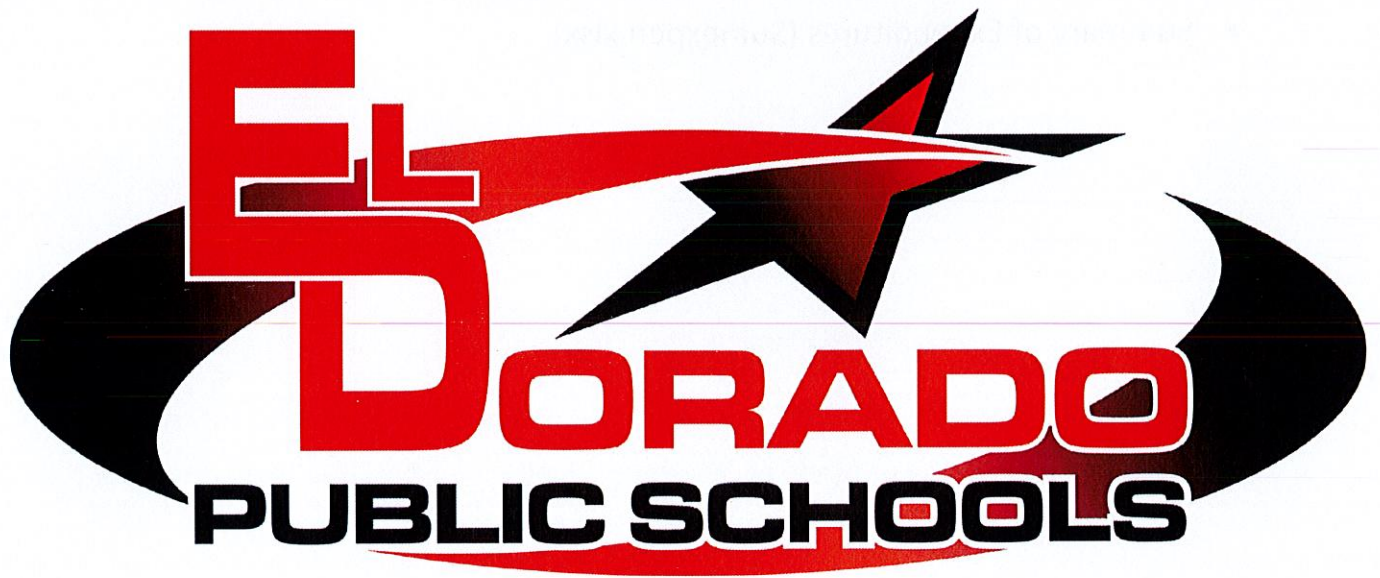


2023-2024

USD Budget Profile



USD 490 El Dorado Public
Schools

Order of Contents

- Budget General Information (characteristics of district)
- Supplemental Information for Tables in *Summary of Expenditures*
- KSDE Website Information Available
- Summary of Expenditures (Sumexpen.xlsx)

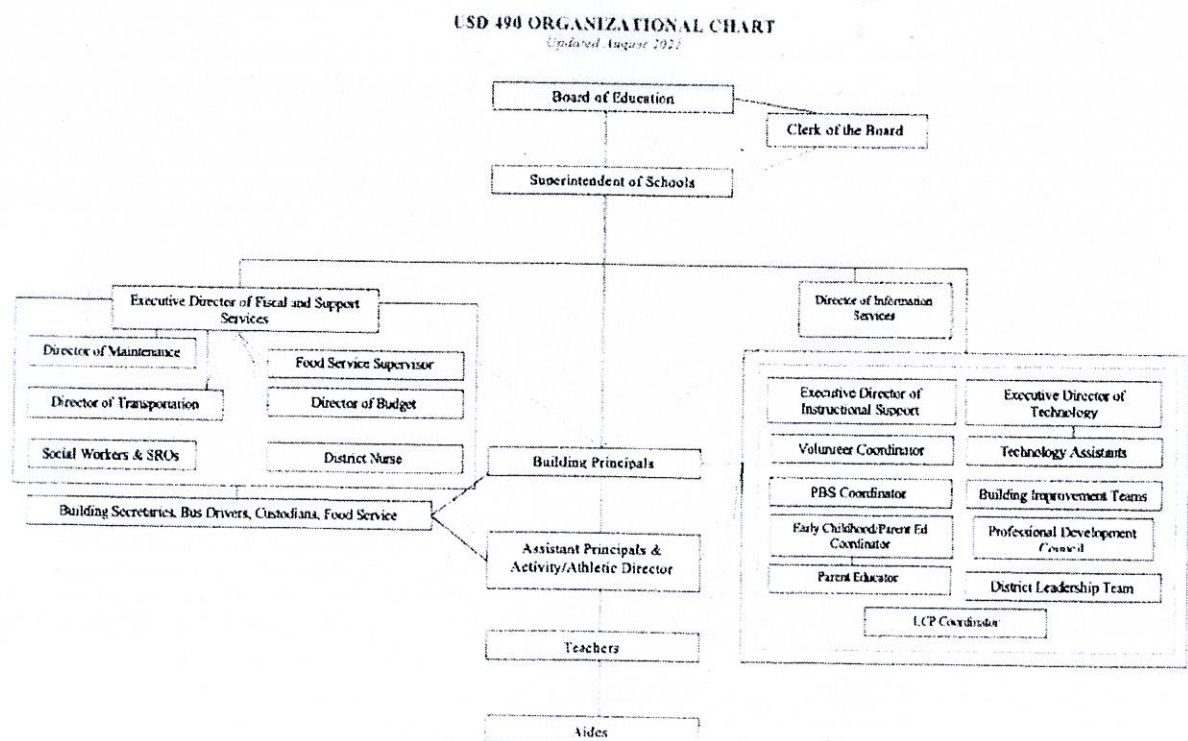
- Communities in Schools, wrap-around social services for at-risk middle school students
- Jobs for America's Graduates (JAG), working to increase graduation rates through engagement in vocational and service activities
- YMCA SPLASH and Middle School After School providing second grade water safety and after school wellness
- YMCA After School Program located at Skelly Elementary for grade levels K – 5 to support students with enrichment activities and knowledge development. The district supports programming with after school transportation to Skelly Elementary from the two other elementary schools.
- District fitness trail located at El Dorado Middle School
- Tennis Court Partnership with City of El Dorado

Board Members

Roger Smith, President, 210 Wingate Ct, El Dorado KS 67042
 Bill Rinkenbaugh, Vice-President, 810 Troon Street, El Dorado KS 67042
 Rob Lane, 720 Meadow Road, El Dorado KS 67042
 Haley Remsberg, 1745 Candace Lane, El Dorado KS 67042
 Tom Storrer, 530 Prairie Road, El Dorado KS 67042
 Sharon Waugh, 301 S Star, El Dorado KS 67042
 Norm Wilks, President, 1320 E McCollum Rd, El Dorado KS 67042

Key Staff

Superintendent: Jenifer Davis
 Executive Director of Support Services: Carter Kruger
 Executive Director of Technology: Ian Hett
 Executive Director of Fiscal and Support Services: Kathy Robertson
 Board Clerk: Melissa Smith



2023-2024 Budget General Information

USD #: 490

Introduction

Unified School District 490, El Dorado Public Schools, serves students and families throughout 128 square miles in the city of El Dorado and the surrounding rural area of Butler County with a comprehensive educational program including vocal music, band, orchestra, fine arts, physical education, art, foreign language, and technology. The district has been recognized nationally for excellence in technology and takes pride in providing tools that support equity for educational access. Grandview Elementary was designated as a winner of U.S. Department of Education's Blue Ribbon nationally recognized elementary school in 2021.

Students attend one of three elementary schools, a middle school serving grades 6-8, and El Dorado High School, a 4A school serving students in grades 9-12. Students also have an opportunity to attend a K-12 virtual school. Pre-K students are served through a State Three and Four-Year Old Preschool grant, Early Childhood Special Education, and the KSDE Pre-K Pilot grant. The district has provided free all-day kindergarten for fifteen years. El Dorado Public Schools successfully maintains the Mental Health grant through the Kansas Department of Education and in conjunction with South Central Mental Health for all enrolled students. The high school provides alternative programs for students who experience success in non-traditional settings at an off-site campus located in the district's Performing Arts Center. A drop-out recovery program for adults is provided through a partnership with ORION Service Center along with educating inmates at the Butler County Jail. In addition, the district is a member of the Butler County Special Education Cooperative, serving students in all nine Butler County school districts. A full-range of summer programs are provided including driver's education, exploratory summer camp for grades K-12, course completion and credit recovery. Each program is supported by free transportation and access to other community support services such as the YMCA and City Recreation programs. The Board of Education has developed a comprehensive strategic plan with goals in Student Achievement, School Climate, District Culture and Fiscal and Resource Management. As a result of this planning over the course of three strategic cycles, three new facilities were opened in the fall of 2018, finalizing a goal to improve every educational facility in the district to better meet student learning needs. The capstone project, renovation of the Historic 1937 El Dorado High School/Middle School, celebrates a century of public education and a district area of excellence, the performing arts.

Community support enhances district services through a number of initiatives:

- Adopt-a-Class Mentoring Program, matching local businesses/citizens with graduating classes
- Dolly Parton Imagination Library, providing a free book each month to preschoolers
- I Can Read, one-on-one reading volunteers for second grade students
- Kiwanis Health & Rotary ACT, Dictionary, Playground Map, and Social Skills Grants
- Staff Wellness Partnership with YMCA
- Partners In Education, a foundation supporting special projects and scholarships
- The El Dorado Sports Foundation, supporting school athletic needs

The District's Accomplishments and Challenges

Accomplishments:

- KS Governor's Scholars: Abigail Hutchins and Michael Riddle
- KS State Scholars: Gibson Baker, Stanley Burns, Adam Cavallaro, Logan Clark, Chloe Coiner, Jerica George, Jillian George, Abigail Hutchins, Brooklyn Jahn, Pheydra Lynes, David Mitchell, Aodhfionn Mora-Bruce, Macy Parsons, Michael Riddle, Collin Scott, Jay Tipton, Kaydence Voyles, Levi Wittenberg
- KS Honor Scholars: Gibson Baker, Jillian George, Abigail Hutchins, Michael Riddle, Jay Tipton
- KSHSAA State Music Festival: I Ratings: EHS Band; Justus Browne (bass clarinet); Pheydra Lynes (tenor sax.); Michael Riddle (alto sax.) II-Ratings: EHS Orchestra; Koda Emler (violin); Sean Kagle (violin); Jack Christy (vocal); Mariah Edwards (vocal)
- State Piano Festival: Duke Jensen (I-Rating) • Boys Swimming: Jay Tipton- 7th in 100 backstroke • Girls Swimming: Briley Larcom- 5th in 100 backstroke and 7th in 100 freestyle
 - Track: Gabe Harp-Jackson- 5th in 100 meter dash and 5th in high jump, 7th in 400 meter dash; Bronson Larimer- 8th in shot put and 14th in discus; Cheyenne Jones- 4th in shot put; Keylee Faudere- 11th in discus
- Wrestling: Trinity Motter- 3rd
- Capturing Kids' Hearts National Showcase School: Blackmore Elementary

Challenges:

- Declining enrollment
- Staff retention and recruitment
- Chronic absenteeism
- Changing socio-economic makeup

Supplemental Information for the Following Tables

1. Summary of Total Expenditures by Function (All Funds)
2. Summary of General Fund Expenditures by Function
3. Summary of Supplemental General Fund Expenditures by Function
4. Summary of General and Supplemental General Fund Expenditures by Function
5. Summary of Special Education Fund by Function
6. Instruction Expenditures (1000)
7. Student Support Expenditures (2100)
8. Instructional Support Expenditures (2200)
9. General Administration Expenditures (2300)
10. School Administration Expenditures (2400)
11. Central Services Expenditures (2500)
12. Operations and Maintenance Expenditures (2600)
13. Transportation Expenditures (2700)
14. Other Support Services Expenditures (2900)
15. Food Service Expenditures (3100)
16. Community Services Operations (3300)

17. Capital Improvements (4000)
18. Debt Services (5100)
19. Miscellaneous Information – Transfers (5200)
20. Miscellaneous Information Unencumbered Cash Balance by Fund
21. Reserve Funds Unencumbered Cash Balance
22. Other Information – Enrollment Information
23. Miscellaneous Information Mill Rates by Fund
24. Other Information – Assessed Valuation and Bonded Indebtedness

Note: FTE is the audited enrollment 9/20 and 2/20 (if applicable) and estimated for the budget year, which includes preschool-aged at-risk and virtual enrollment. Enrollment does not include non-funded preschool. Beginning 2017-18, full-day Kindergarten is 1.0 FTE. This information is used for calculating Amount Per Pupil for Sumexpen.xlsx and Budget At A Glance (BAG).

KSDE Website Information Available

K-12 Statistics (Building, District or State Totals) Report Generator:

https://datacentral.ksde.org/report_gen.aspx

- Attendance / Enrollment Reports
- Staff Reports
- Graduates / Dropouts Reports
- Crime / Violence Reports

School Finance Reports (Data Central) website below:

<https://datacentral.ksde.org/default.aspx>

- Assessed Valuation
- Cash Balances
- Headcount Enrollment
- Mill Levies
- Personnel (Certified/Non-Certified)
- Salary Reports

Kansas Building Report Card website below:

<http://ksreportcard.ksde.org/>

- Attendance Rate
- Graduation Rate
- Dropout Rate
- School Violence
- Assessments
 - Reading
 - Mathematics
 - Writing
- Graduates Passing Adv. Science Courses
- Graduates Passing Adv. Math Courses

Accountability Reports website below:

<https://datacentral.ksde.org/accountability.aspx>

- Performance Accountability Reports
- Financial Accountability Reports
- Longitudinal Achievement Reports

