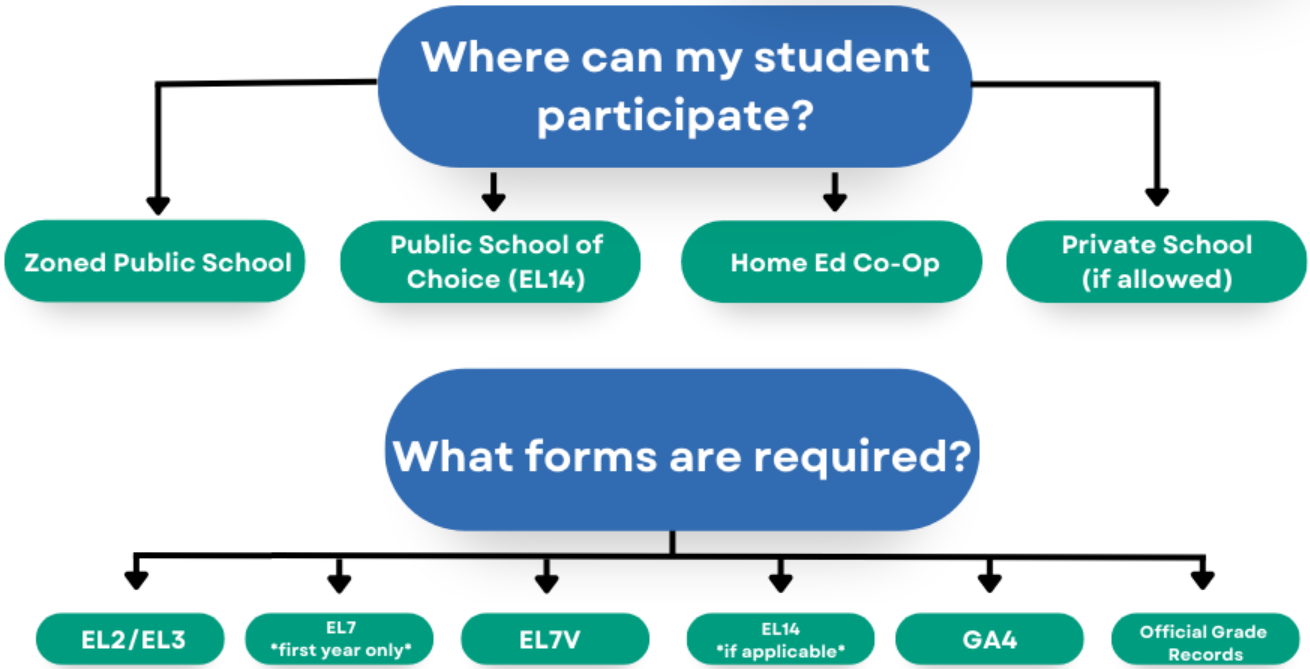


Type 1

Home Education

Notes:

- Students enrolled in FLVS Flex or an out-of-state correspondence school are Home Education students.
- Returning Home Education students do not need to complete the EL7 Form again.

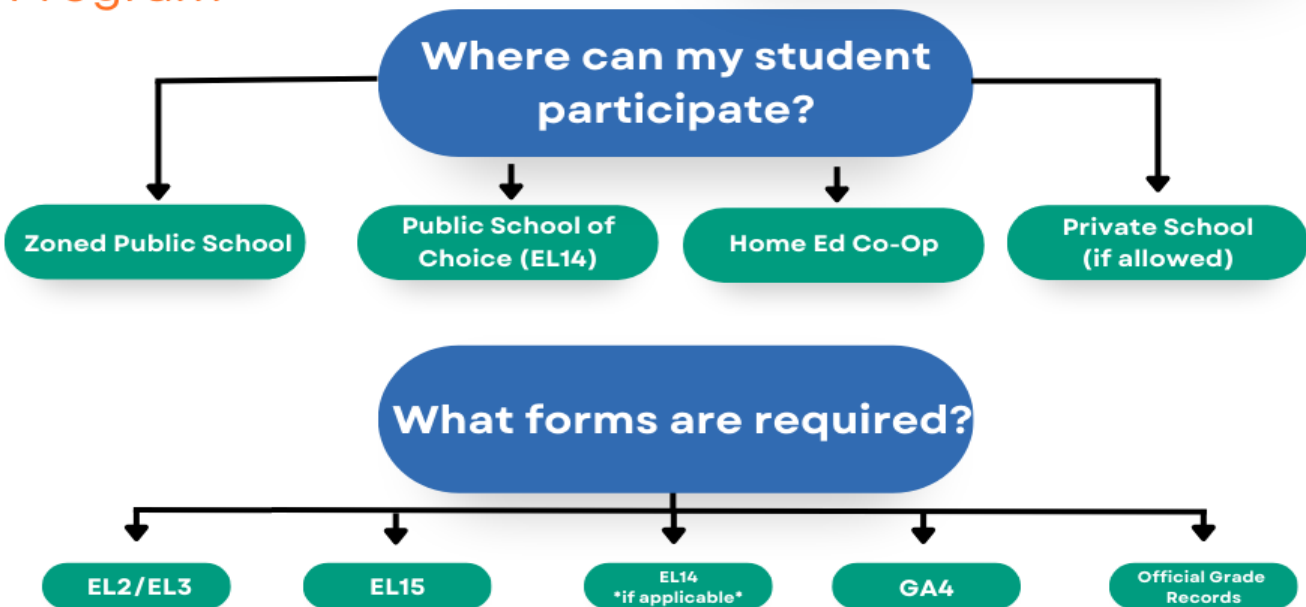


Type 1

Personalized Education Program

Notes:

- Must be registered with a Florida Department of Education (FLDOE) approved scholarship-funding organization (SFO)
- Must take an FLDOE-approved national norm-referenced test and submit results to the SFO.
- Must complete a sworn compliance statement through the SFO.

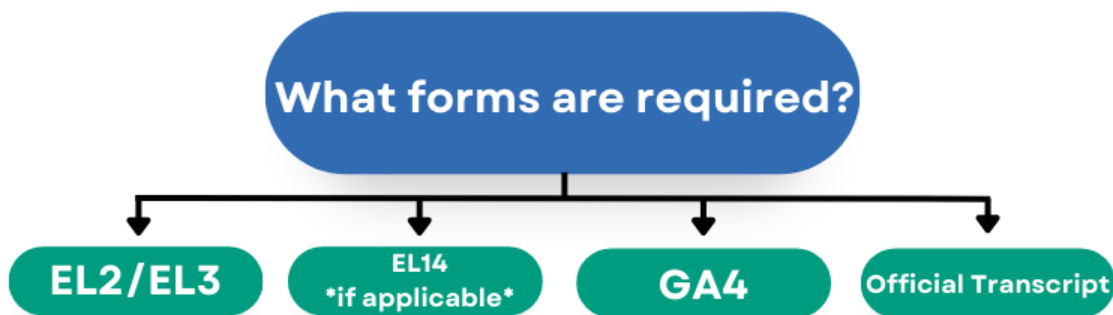


Type 2

Charter

Note:

- Charter School students may only participate in sports NOT offered at the charter school.

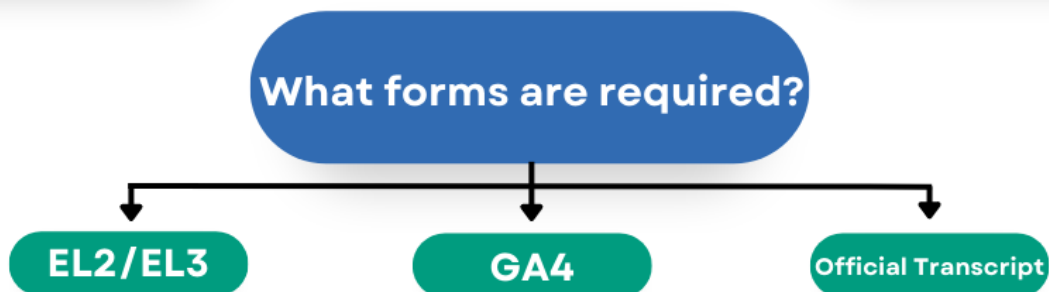
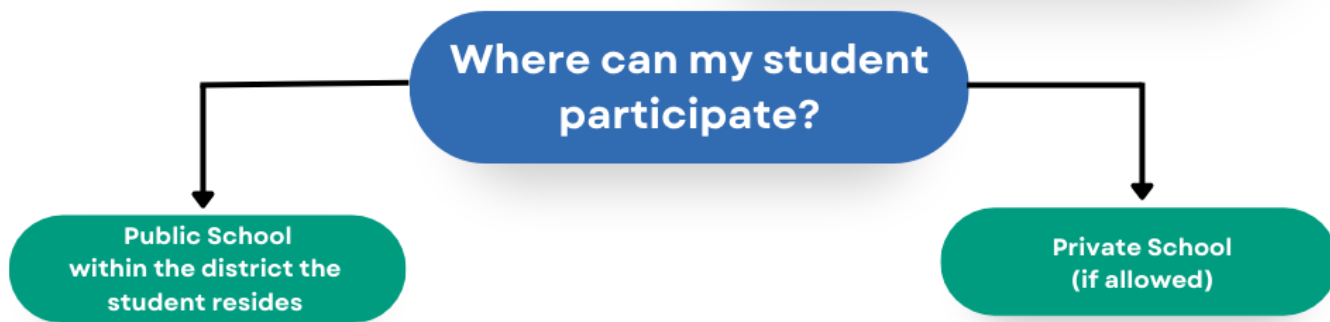


Type 3

Special School

Notes:

- Alternative/special schools must be approved by the school district superintendent and reported to the FHSAA Office.
- These schools must be district operated and may not sponsor ANY sports.
- Students enrolled in the FLVS District franchise may be Alternative/Special School students.

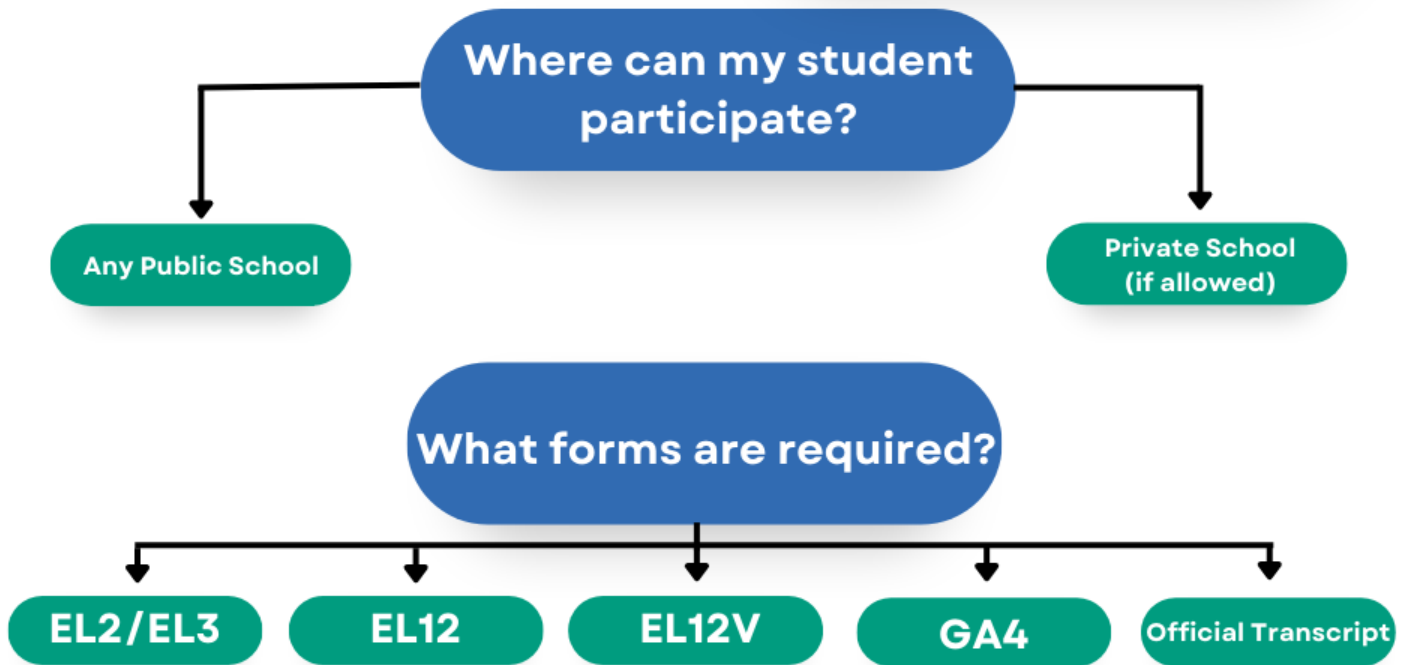


Type 4

Non-Member Private

Note:

- The Non-Member Private school must NOT be a member of the FHSAA, must have 200 students or fewer in the corresponding grade levels, and must NOT sponsor the sport.

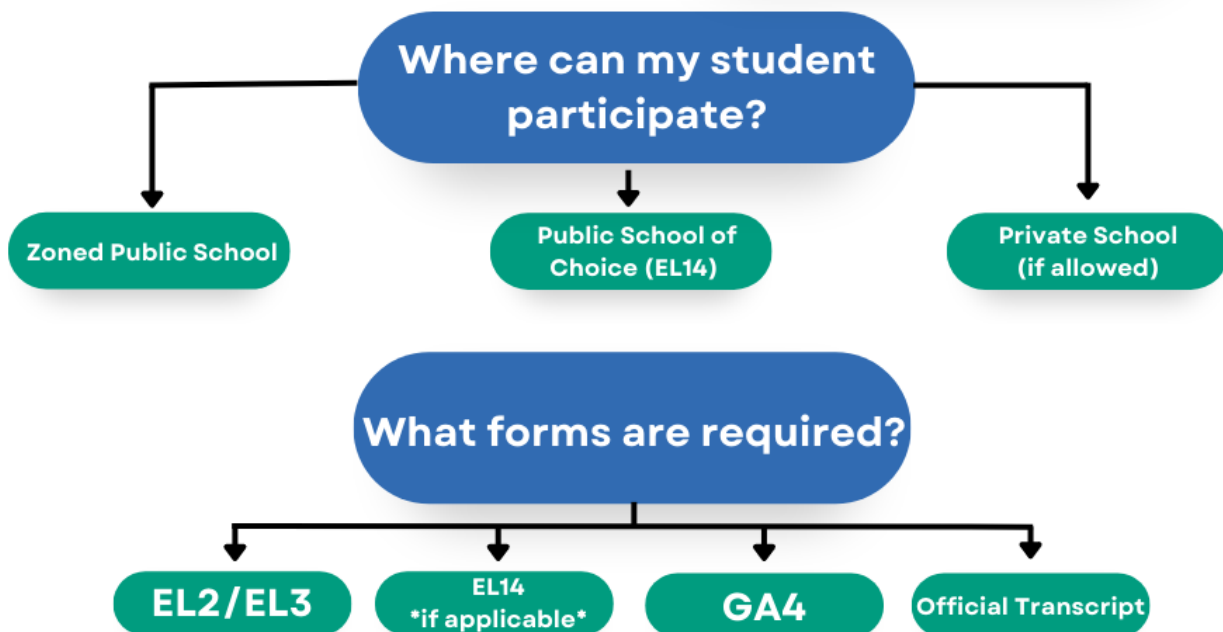


Type 5

FLVS Full-Time

Note:

- Although completing their coursework at home, these are not Home Education students.

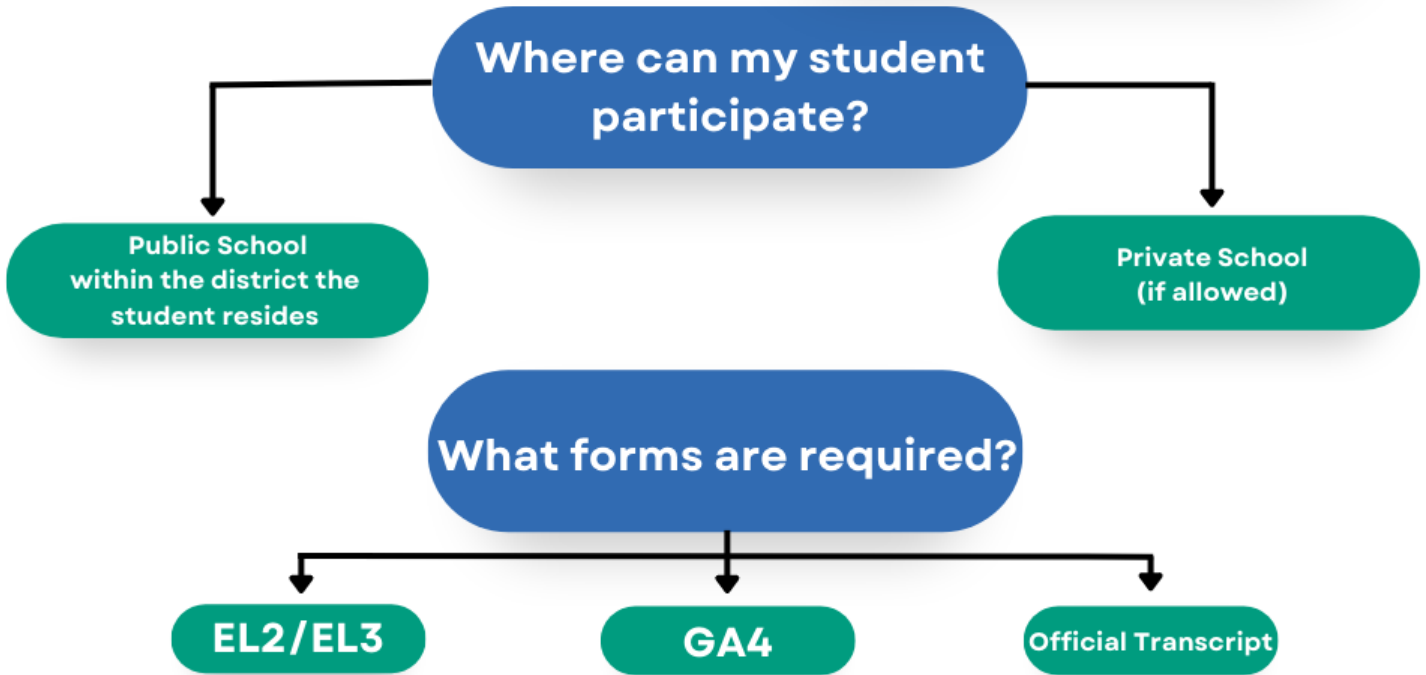


Type 6

Traditional Public School Transfer

Notes:

- Traditional Public School students may only participate in sports NOT offered at their school.
- Student may only participate at school within the district the student resides in.



Type 7

Continued Participation at Previous Public School

