



<https://www.stoughtonschools.org>

March 4, 2024

- District & Town Need
- Townwide Elementary School Improvements
- Where We Are Now
- New Elementary School Design Progress
- Impact to Stoughton – How Does This Affect Me?
- Project Timeline & Next Steps
- Questions

The New Elementary School | stoughton.ma Community Forum

The New Elementary
School Building
Committee



Stoughton Public Schools
Home of the Black Knights • Stoughton, MA



Massachusetts School Building Authority
Funding Affordable, Sustainable, and Efficient Schools in Partnership with Local Communities

VERTEX[®]



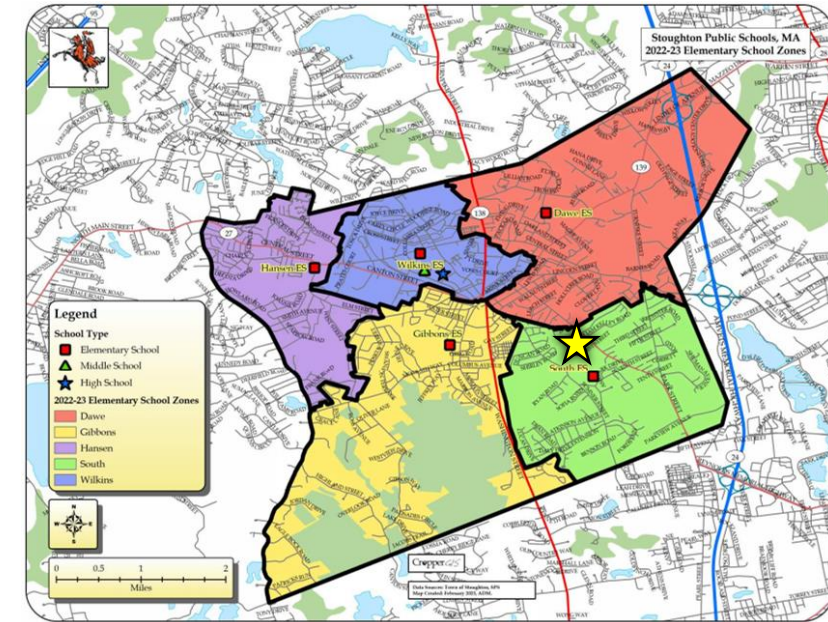
Planning
Architecture
Interior Design

how we got here | project timeline



elementary school education | looking ahead

- Following District Masterplan
- Support Elementary Educational Plan
- Accommodate Increasing Enrollment & Student Needs
- Elementary STEM Lab Program
- Maintenance/Operating Costs
- Travel Between Schools
- Shared Resources
- Reduced Cost of Multiple Resources



how we got here

1 South



South Elementary School: **1958/1965**

2 Wilkins



Wilkins Elementary School: **1954/1962**

3 Hansen



Hansen Elementary School: **1962/1966**

4 Dawe



Dawe Elementary School: **1969**

5 Gibbons

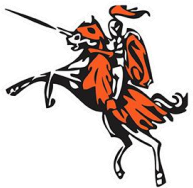
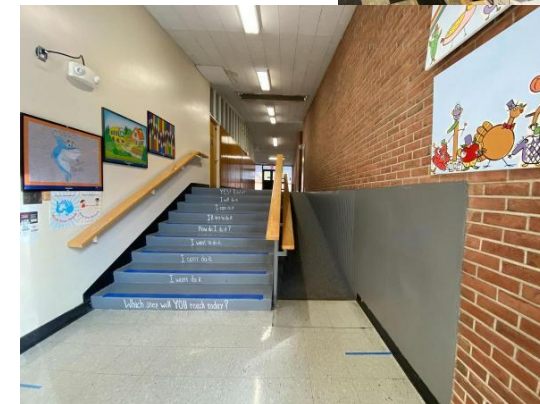


Gibbons Elementary School: **1971**



south elementary school | deficiencies

- Building Envelope and Structure is not Energy Efficient/ Leaking
- Cafetorium Size
- Insufficient Parking & Event Space
- Administrative/Nursing & Student Rights/Privacy Issues
- Not meeting the physical needs of all students and staffs, including SPED (Accessibility Issues)
- Lacking Space Supportive of 21st Century Educational Needs
- No dedicated Kindergarten areas
- Building Safety
- Building Systems are Beyond Life Expectancy

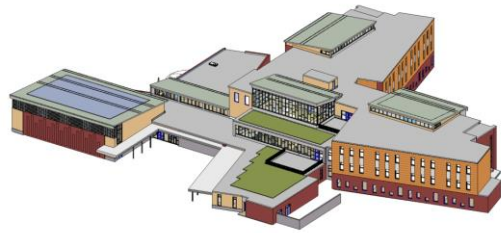


SPS Consolidation Decision of Summer 2023

2027

1

New
Stoughton
Elementary



1962/1966

2

Hansen



1969

3

Dawe



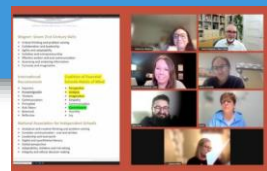
1971

4

Gibbons



2/2023
Educational
Visioning Sessions



2/2023
Educational
Visioning Sessions



2023
Community Forum

2023
Community Forum



2023
Community Forum



elementary school equity | benefits

4 Hansen Elementary School: 1962-66



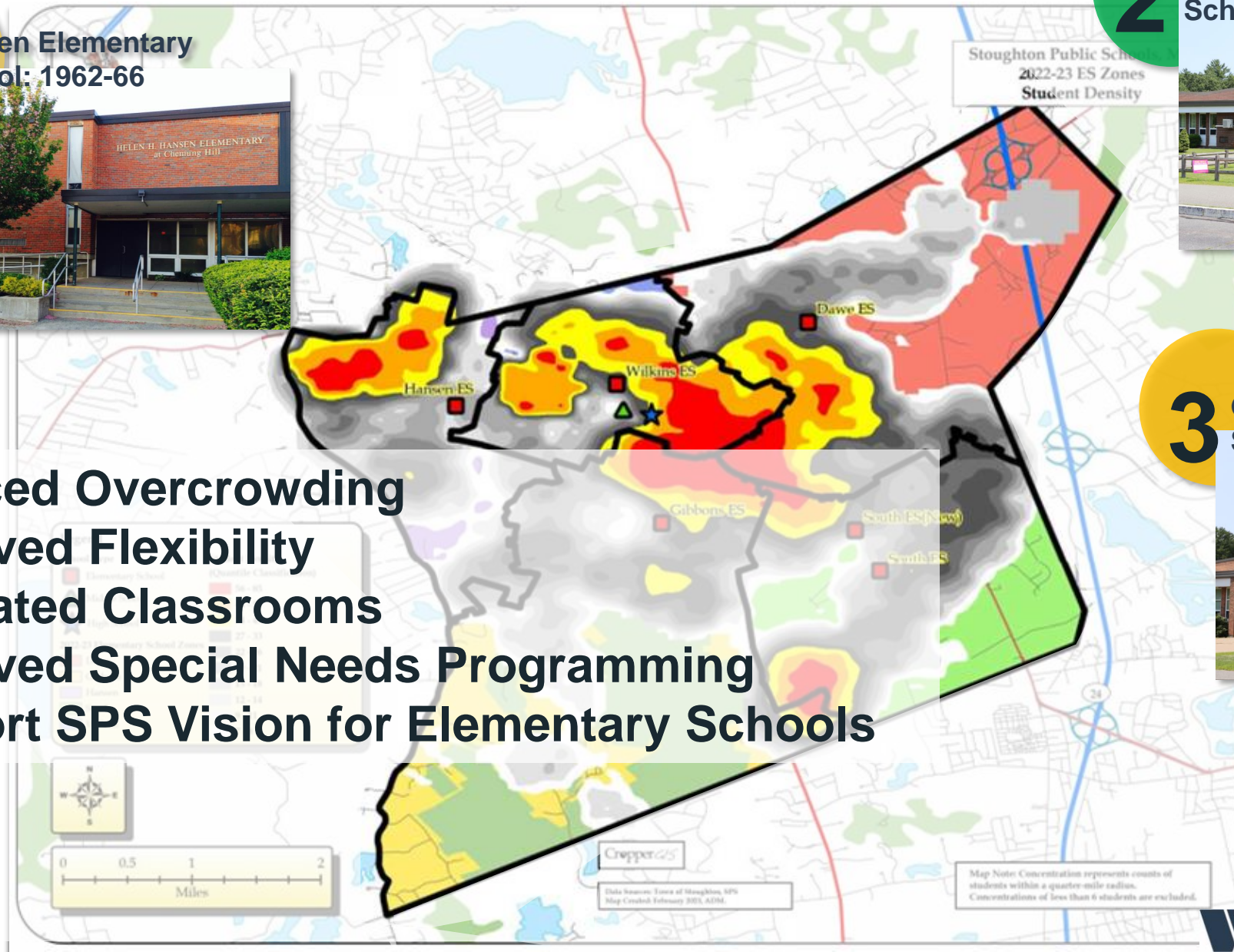
2 Dawe Elementary School: 1969



3 Gibbons Elementary School: 1971



- Reduced Overcrowding
- Improved Flexibility
- Dedicated Classrooms
- Improved Special Needs Programming
- Support SPS Vision for Elementary Schools



elementary equity | ongoing improvements

2

Dawe Elementary School: 1969



- Vestibule – Lobby Improvements
- Ventilation Improvements
- Security Improvements



3

Gibbons Elementary School: 1971



- Vestibule – Lobby Improvements
- Ventilation Improvements
- Security Improvements

4

Hansen Elementary School: 1962-66



- New Playground
- Security Improvements

educational plan | design pattern highlights

Upper and lower school with distinct grade level neighborhoods

Use of **outdoor spaces** & utilization of **building as teacher**

Focus on building **community areas** secured separately from classroom areas
(assembly spaces such as cafe, gym, etc.)

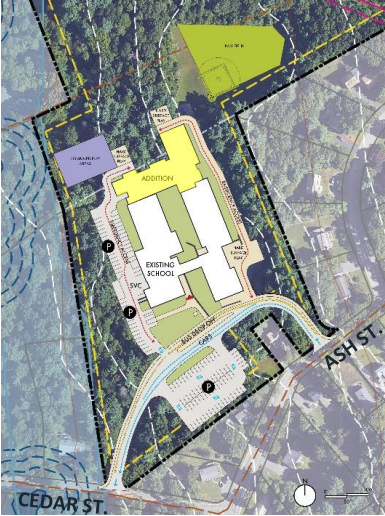
Abundance of **authentic collaboration** and **meeting spaces**

Focus on **centralized learning commons** with **STEM** spaces above

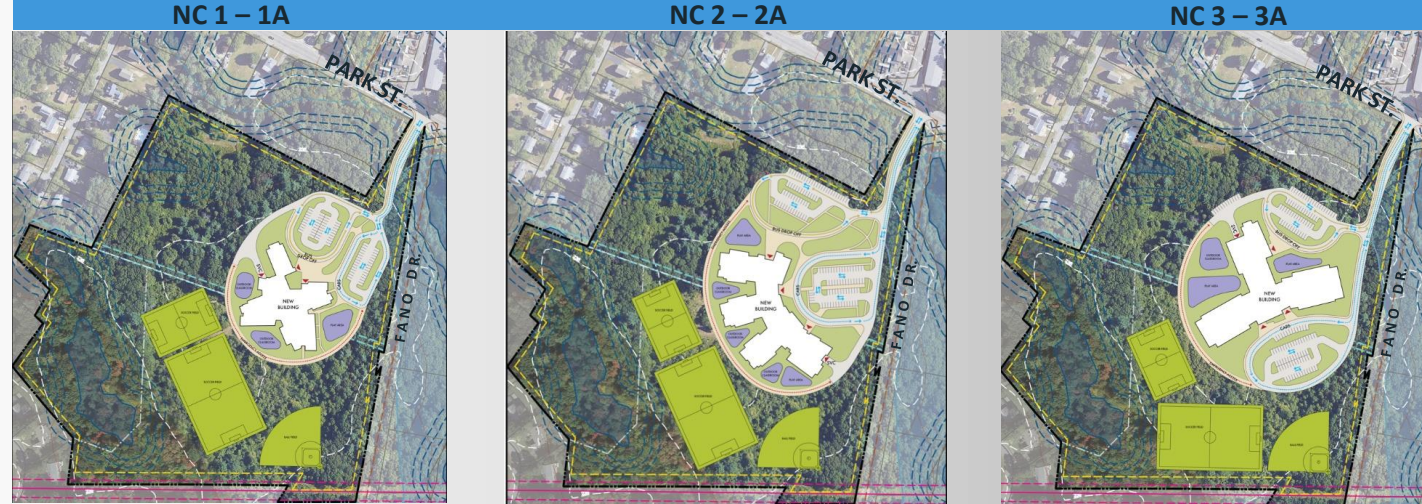
the new elementary school project

site plans

REPLACEMENT
Project Area:
12 acres



REPLACEMENT & CONSOLIDATION (both enrollments)
Project Area: 27 acres



'the pinwheel'

'the arc'

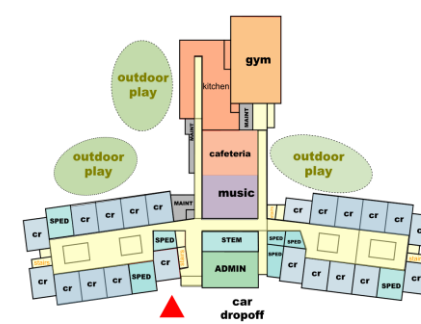
'the tee'

floor plans

Addition - Renovation



New Construction: Line Lumber Site



program key

- LIBRARY / MEDIA
- GYMNASIUM
- CLASSROOMS
- SPECIAL EDUCATION
- BREAKOUT
- SPECIALS (Art/Music/STEM)
- ADMIN/TEACHER SUPPORT
- CAFETERIA & KITCHEN
- CUST / IT / MAINT
- OUTDOOR LEARNING



site plan update | site circulation

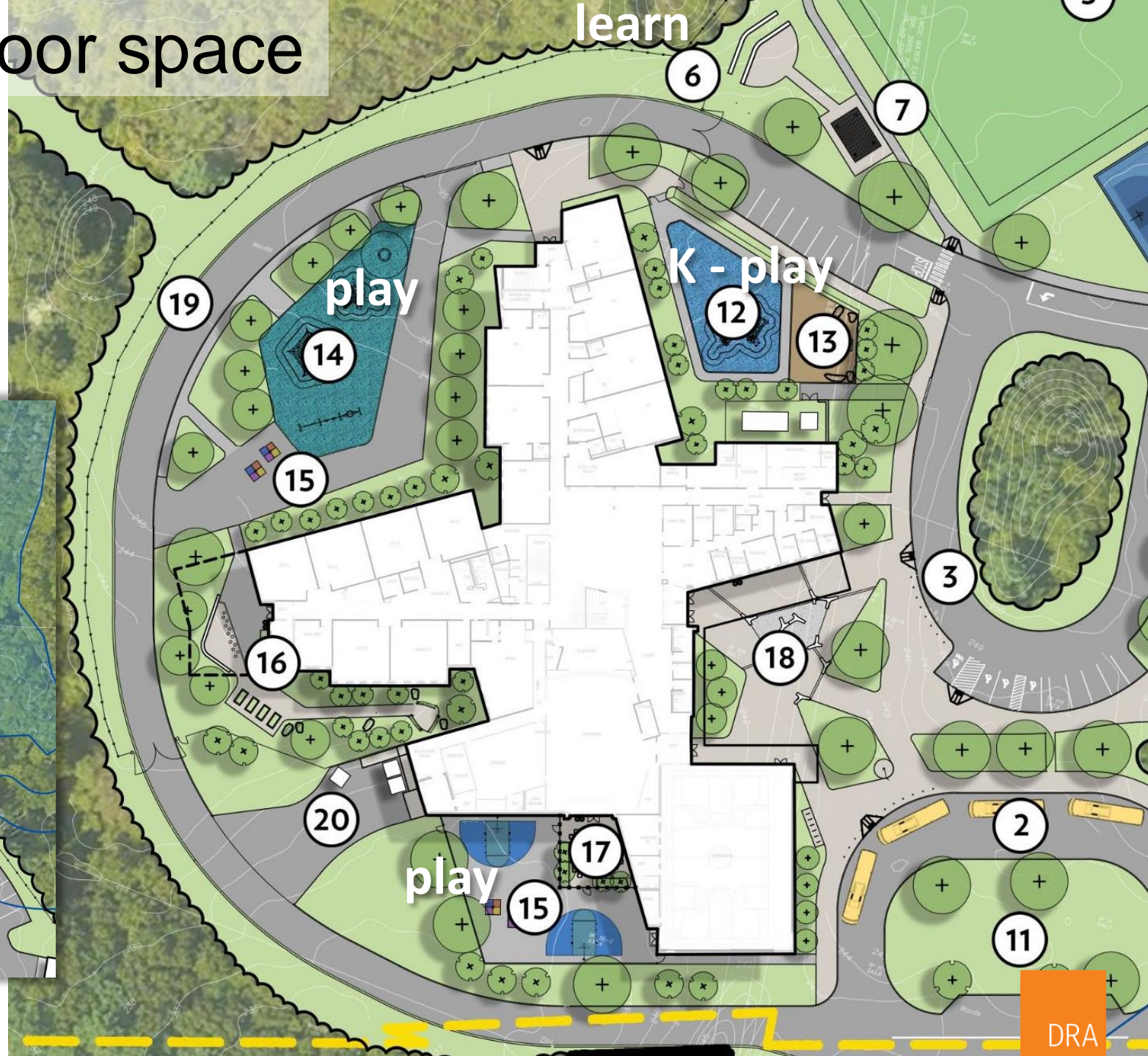
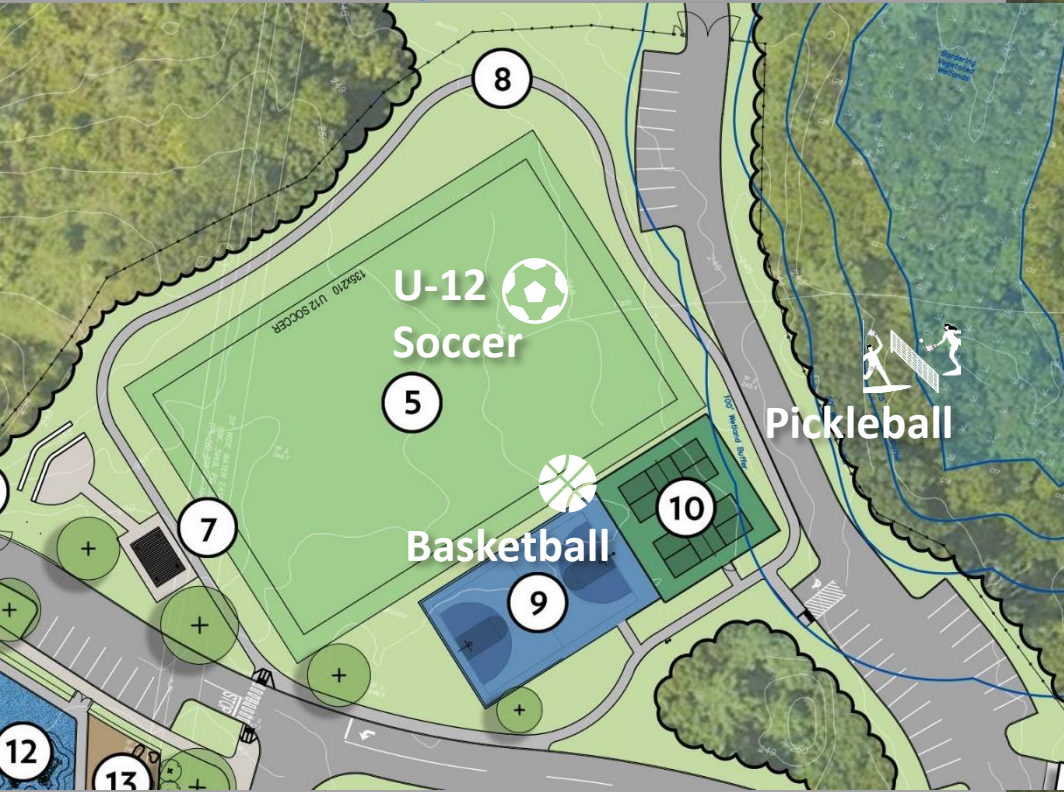
Where is it?



site plan update | outdoor space

outdoor spaces
& utilization of
building as teacher

community resources



design patterns | outdoor learning



Outdoor learning
Student gardens
Nature play
Structured play
Accessibility
Sensitivity to environment



project goals | sustainable solutions

- Target 4% reimbursement as noted in MSBA Project Advisory 81
- LEED Silver (v4)
- All Electric Building: 'Net Zero Ready'
- PV Ready
- Air & Ground Source Heat Pumps (partial geothermal)
- Air Quality Awareness
- Mindful Material Selection
- A building that educates students, staff and the community about sustainable building strategies



project goals | sustainable solutions



The new building will be PV Ready and sloped roofs and orientation has been considered to maximize solar panel orientation



design patterns | geothermal opportunities



design patterns | exterior

Focus on building **community areas**
secured separately from classroom areas
(*assembly spaces such as cafe, gym, etc.*)



design patterns

exterior materials

- Brick & Stone Veneer
- Insulated Glazing
- Insulated Panel Systems
- Precast Concrete
- Standing Seam Roofing
- Membrane Roofing
- Roof Gardens



hansen



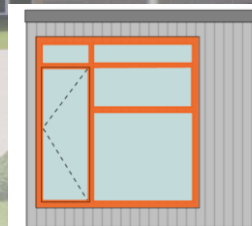
windows
with color

wilkins

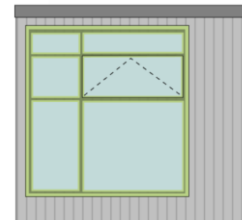
south

dawe

gibbons



UPPER WINDOW

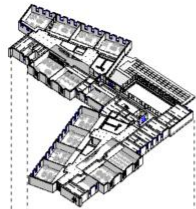


LOWER WINDOW

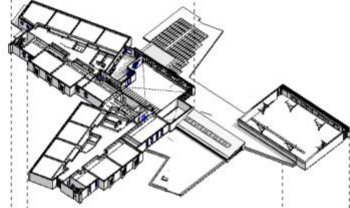


design patterns | program organization

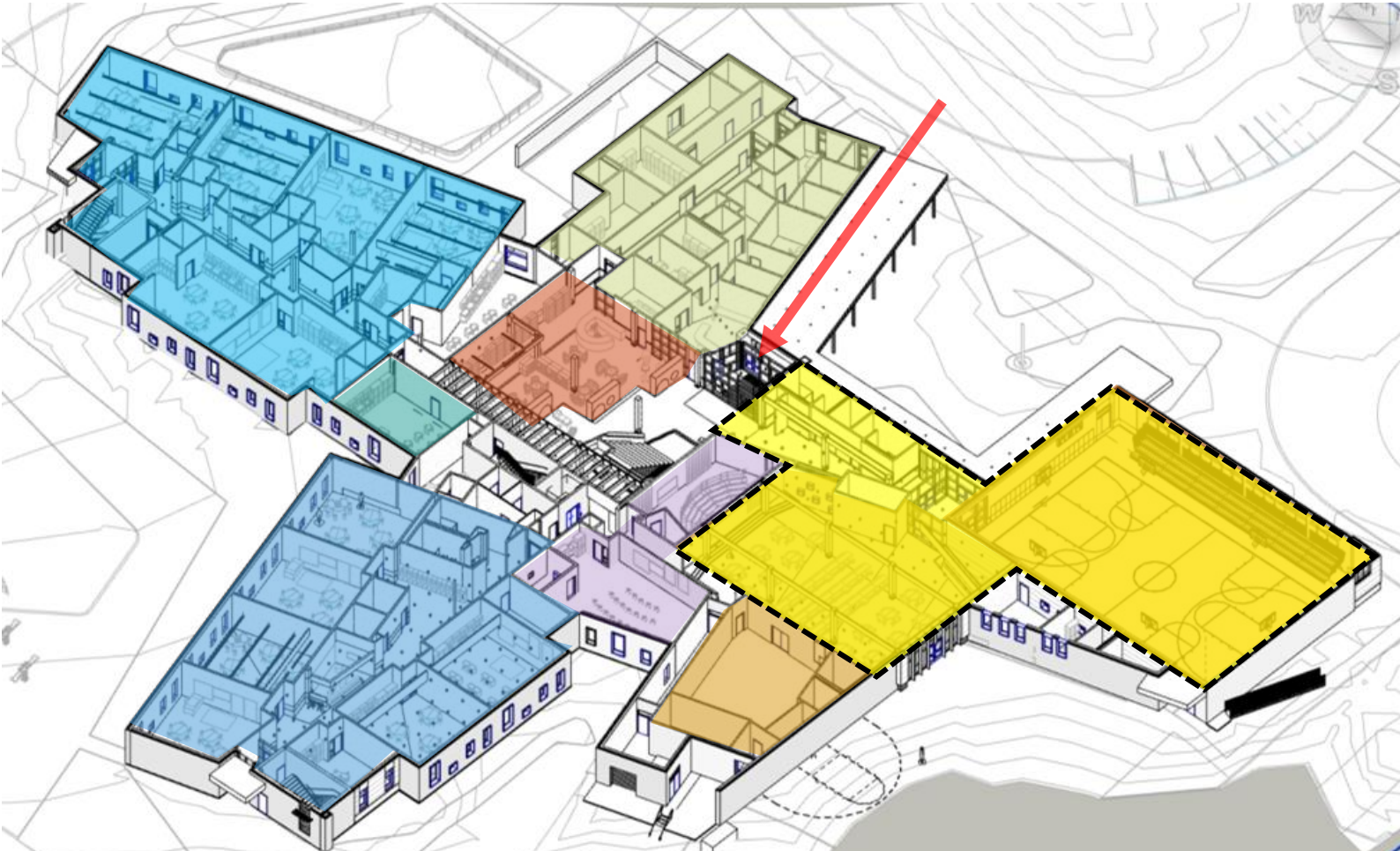
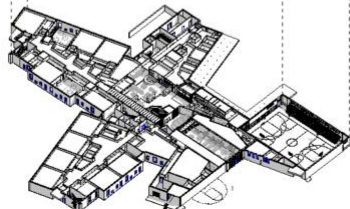
3



2



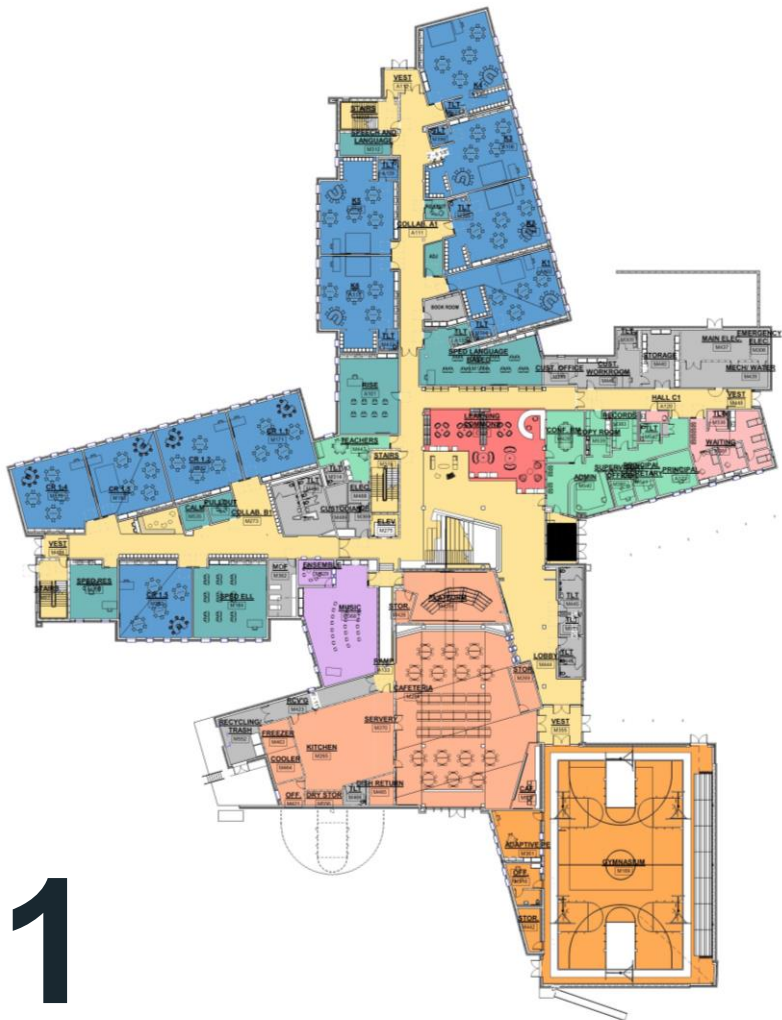
1



- Kindergarten Wing
- First Grade Wing
- RISE Classroom
- Music Program
- Learning Commons
- Gymnasium w/ Seating
- Cafeteria & Kitchen

floor plans | new school

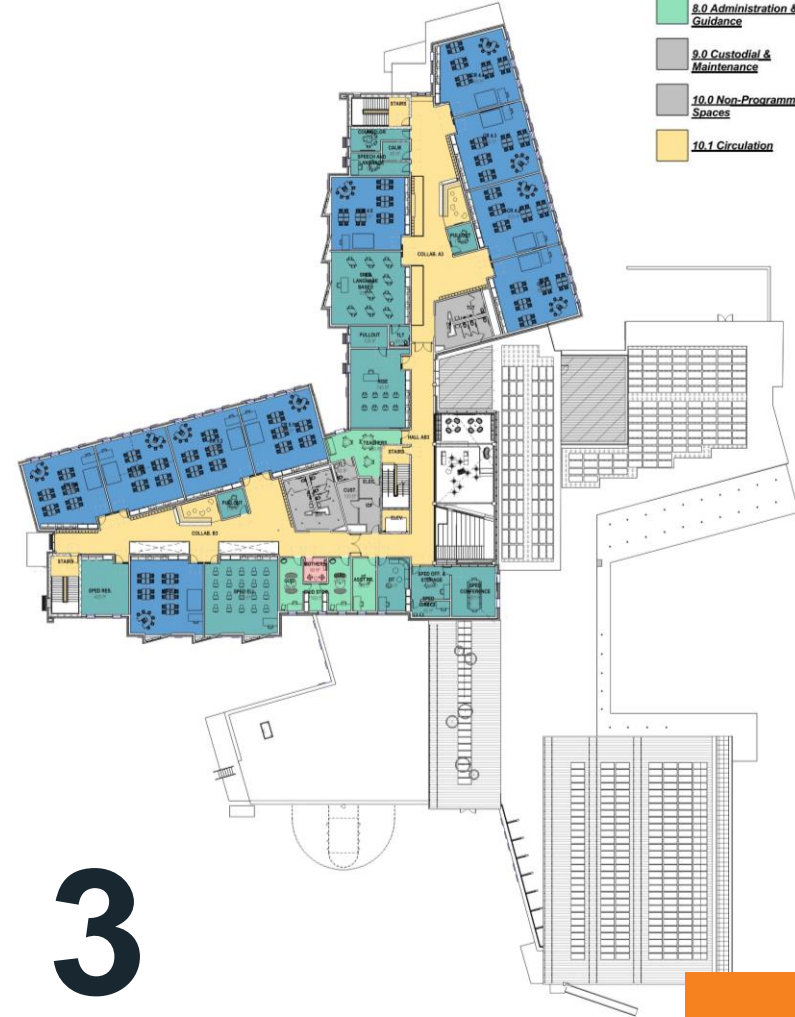
- Department Legend
- 1.0 Core Academic
 - 2.0 Special Education
 - 3.0 Art & Music
 - 4.0 Health & Physical Education
 - 5.0 Media Center
 - 6.0 Dining & Food Service
 - 7.0 Medical
 - 8.0 Administration & Guidance
 - 9.0 Custodial & Maintenance
 - 10.0 Non-Programmed Spaces
 - 10.1 Circulation



1



2



3

design patterns | new school

learning commons : heart of the school



Hildreth Elementary School | harvard.ma | ARROWSTREET



Hildreth Elementary School



Marathon Elementary School | DRA



Anne T. Dunphy Elementary School | DRA



Lakeridge Middle School |
Lake Oswego School District



Blake Early Learning Center | HGA



Penn Brook Elementary | DRA



Focus on centralized learning commons
with **STEM** spaces above

design patterns | learning commons

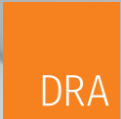
Focus on **centralized learning commons**
with **STEM** spaces above



design patterns | STEM

Abundance of **authentic collaboration**
and **meeting spaces**

design patterns | classroom and collaboration





design patterns | classroom and collaboration



design patterns | cafeteria



Focus on building **community areas**
secured separately from classroom areas

design patterns | gym

New Stoughton Elementary School



<https://www.stoughtonschools.org>



100
YEARS

DRA

Total Project Budget Schematic Design submitted to MSBA

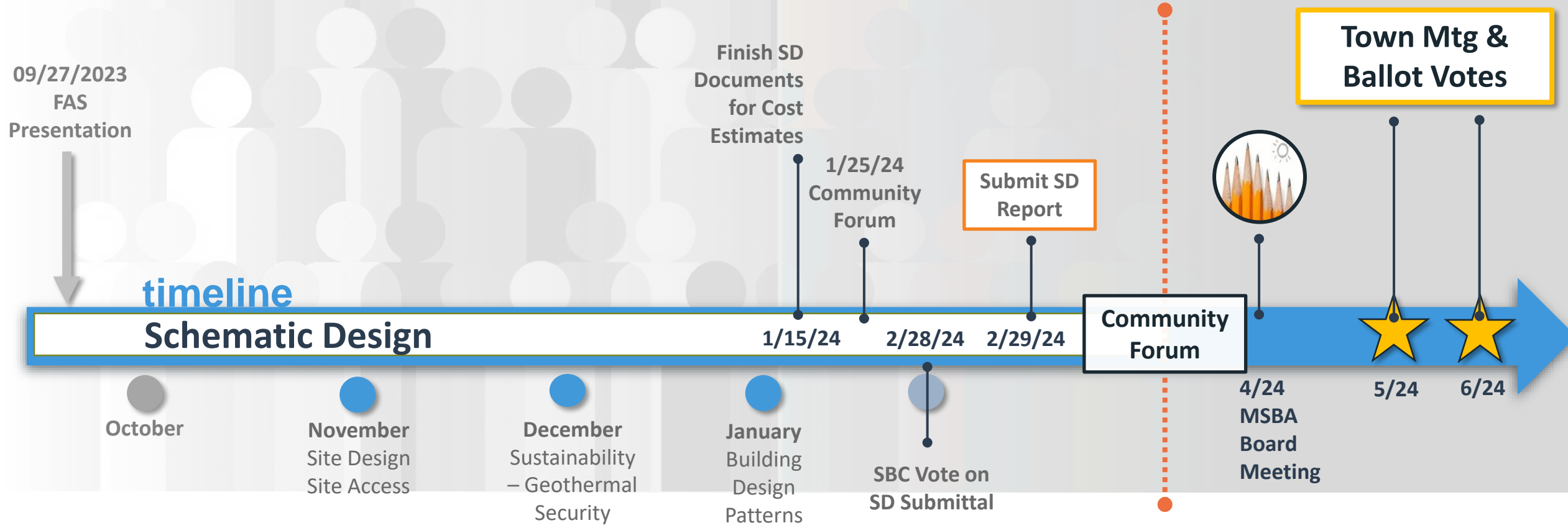
	SF	Project Budget	Const. Cost	Bldg Cost	Site Cost	Town Share
SD (February 2024)	101,550	\$114,407,888	\$91,839,487	\$69,400,091	\$22,439,396	\$66,523,994

Costs were reconciled between two independent, third party estimators

Current Assumptions:

- Towns effective reimbursement rate of 42% of all project costs
- Currently estimating Town share at \$66.5M
- FY2023 DOR statistics and assuming a current interest rate - \$475,000 avg valuation
- Anticipated tax increase on average home due to the project ranges \$400-410 per household
- 6% increase to the average homeowner's tax bill.

project timeline

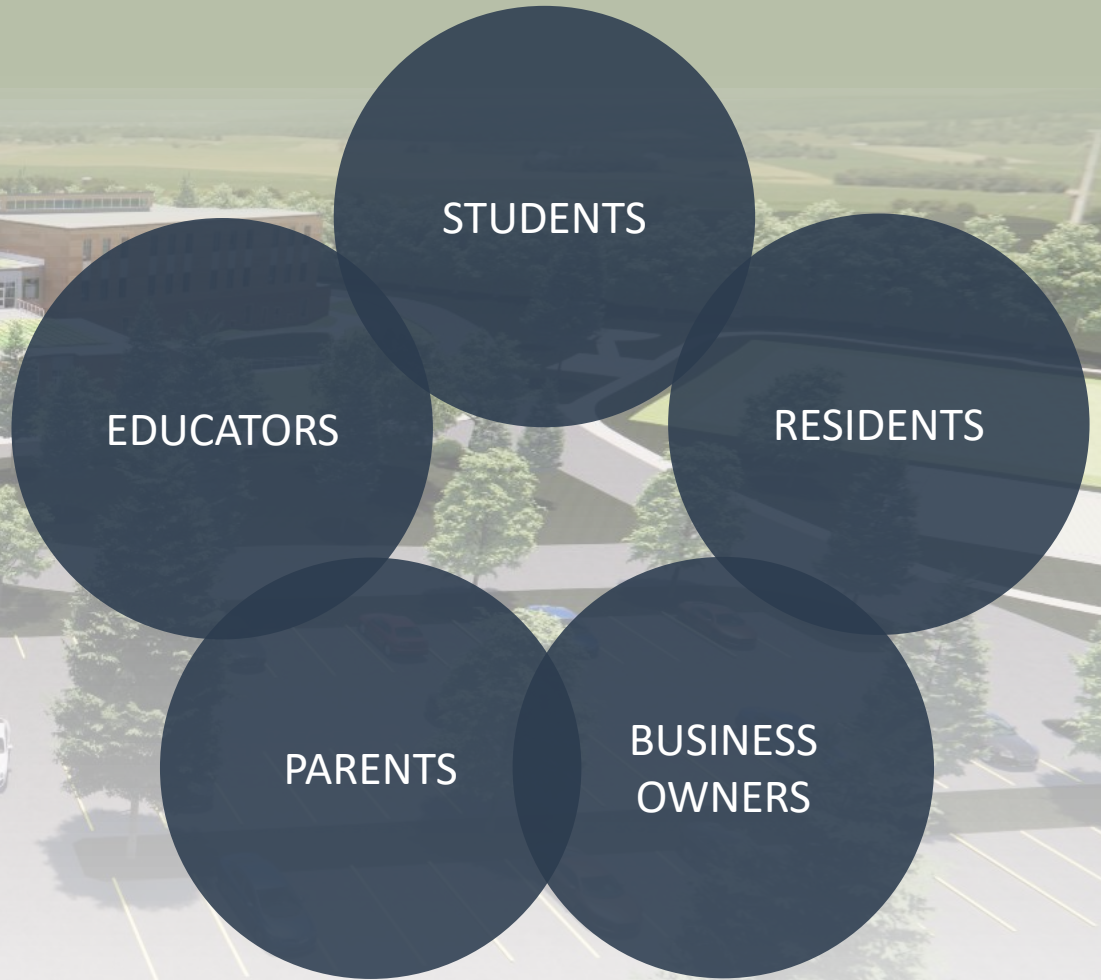


The New Stoughton Elementary School Project



community benefits

- Improved Quality of Education
- Site Amenities
- Community Space
- Improved Traffic Patterns
- Long-Term Value for Stoughton
- Pride in Community
- Facilitates Future Growth



the new stoughton elementary school project

Town Meeting & Ballot Initiative

questions?

<https://www.stoughtonschools.org>



Suggestions?
Check out the website!

Email us at
NewElementarySchool@stoughtonschools.org

Sugestões?
Confira o site!

Envie-nos um e-mail para
NewElementarySchool@stoughtonschools.org

**The New Elementary
School Building
Committee**



Stoughton Public Schools
Home of the Black Knights • Stoughton, MA



Massachusetts School Building Authority
Funding Affordable, Sustainable, and Efficient Schools in Partnership with Local Communities

VERTEX[®]

DRA
Planning
Architecture
Interior Design