



<https://www.stoughtonschools.org>

# January 25, 2024

- District & Town Need
- Townwide Elementary School Improvement
- Where We Are Now
- Project Timeline & Next Steps
- Impact to Stoughton – How Does This Affect Me?
- New Elementary School Design Progress
- Questions

## The New Elementary School | [stoughton.ma](https://stoughton.ma) Community Forum

The New Elementary  
School Building  
Committee



Stoughton Public Schools  
Home of the Black Knights • Stoughton, MA



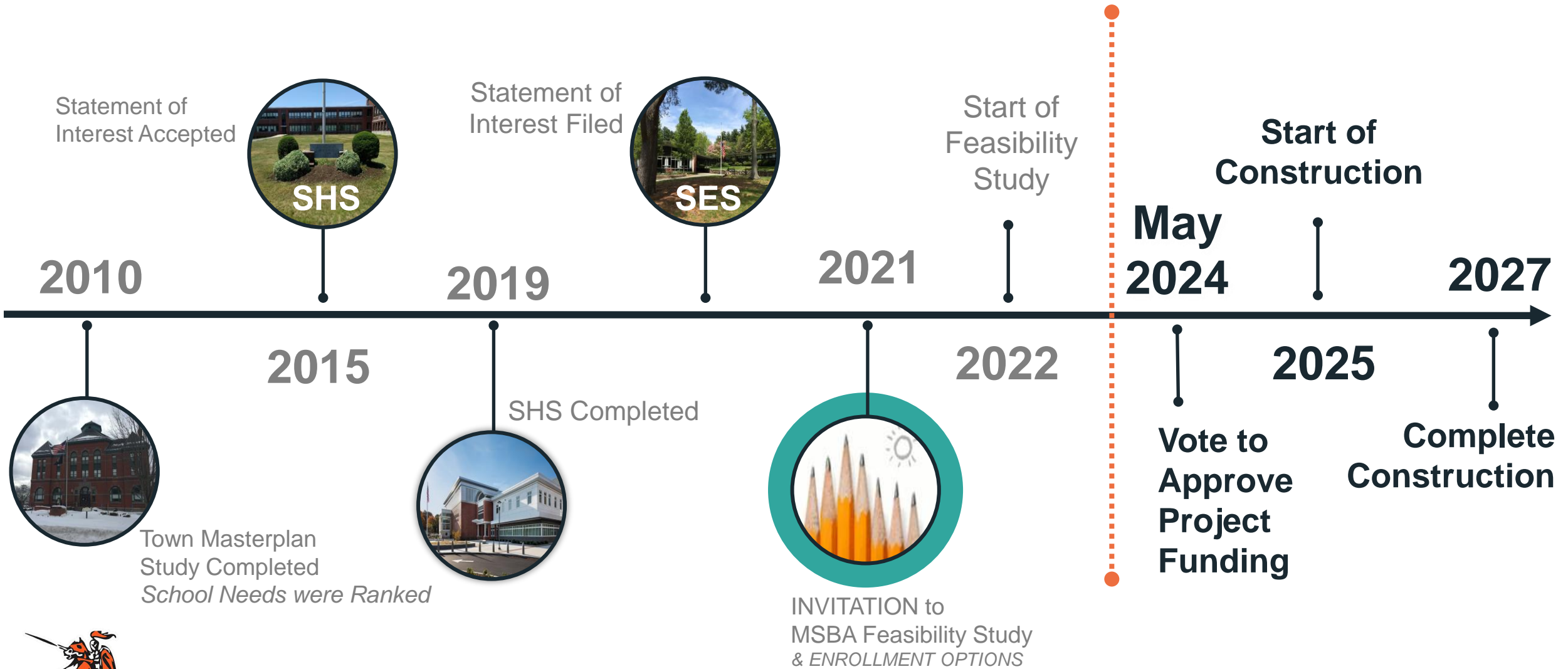
Massachusetts School Building Authority  
*Funding Affordable, Sustainable, and Efficient Schools in Partnership with Local Communities*

**VERTEX**<sup>®</sup>



Planning  
Architecture  
Interior Design

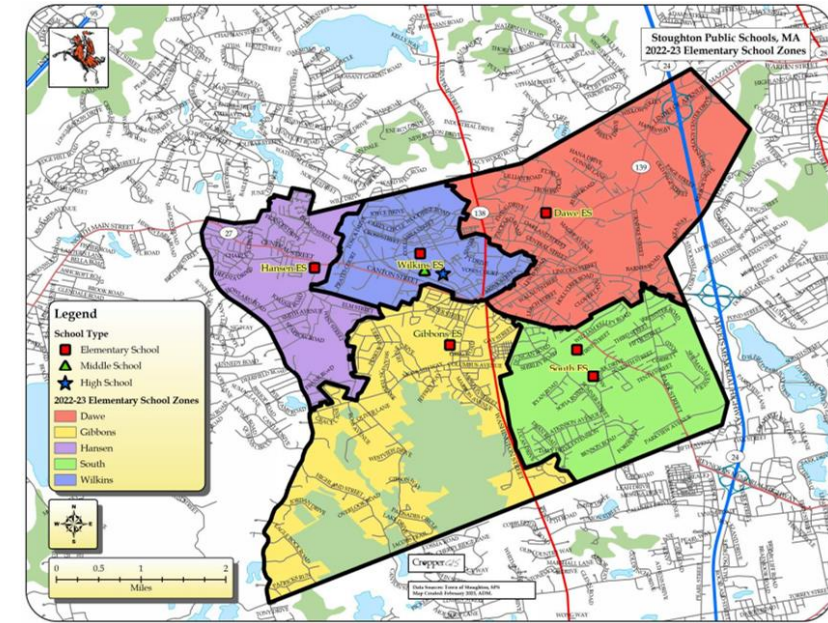
# how we got here | project timeline





# elementary school education | looking ahead

- Following District Masterplan
- Support Elementary Educational Plan
- Accommodate Increasing Enrollment & Student Needs
- Elementary STEM Lab Program
- Maintenance/Operating Costs
- Travel Between Schools
- Shared Resources
- Reduced Cost of Multiple Resources



# how we got here

1 South



South Elementary School: **1958/1965**

2 Wilkins



Wilkins Elementary School: **1954/1962**

3 Hansen



Hansen Elementary School: **1962/1966**

4 Dawe



Dawe Elementary School: **1969**

5 Gibbons



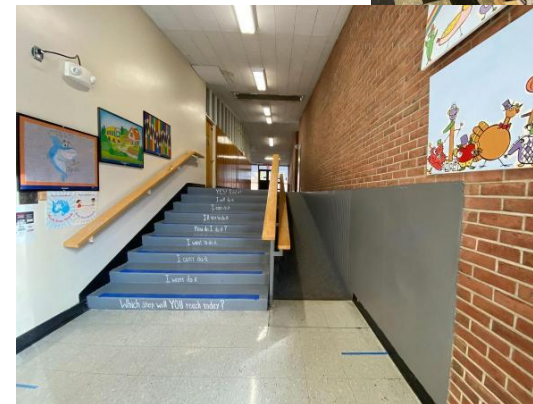
Gibbons Elementary School: **1971**





# south elementary school | deficiencies

- Building Envelope and Structure is not Energy Efficient
- Roof/Windows Leakage
- Cafetorium Size
- Insufficient Parking & Event Space
- Administrative/Nursing & Student Rights/Privacy Issues
- Not meeting the physical needs of all students and staffs
- Lacking Space Supportive of 21<sup>st</sup> Century Educational Needs
- Not Meeting the Needs of SPED students
- No dedicated Kindergarten areas
- Building Safety



# projected elementary schools

2027

1

New  
Stoughton  
Elementary



1962/1966

2

Hansen



1969

3

Dawe



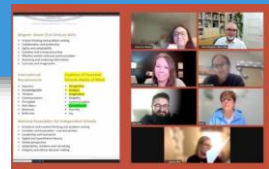
1971

4

Gibbons



2/2023  
Educational  
Visioning Sessions



2/2023  
Educational  
Visioning Sessions



2023  
Community Forum

2023  
Community Forum



2023  
Community Forum





# elementary equity | ongoing improvements

## Reduced Overcrowding Improved Special Needs Programming

2

Dawe Elementary School: 1969



- Vestibule – Lobby Improvements
- Ventilation Improvements
- Security Improvements



3

Gibbons Elementary School: 1971



- Vestibule – Lobby Improvements
- Ventilation Improvements
- Security Improvements

4

Hansen Elementary School: 1962-66



- New Playground
- Security Improvements



# educational plan | design pattern highlights

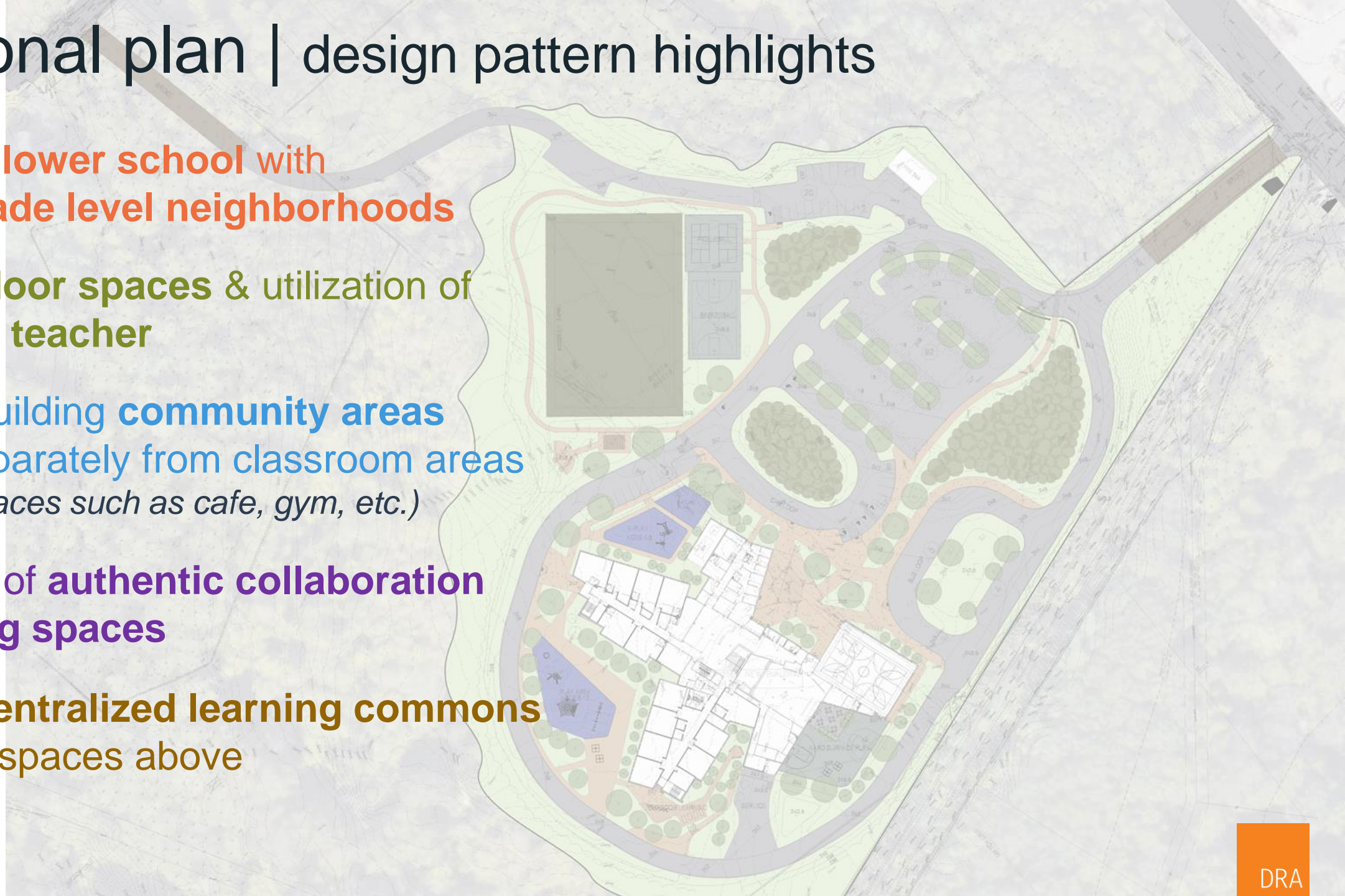
Upper and lower school with distinct grade level neighborhoods

Use of outdoor spaces & utilization of building as teacher

Focus on building community areas secured separately from classroom areas (assembly spaces such as cafe, gym, etc.)

Abundance of authentic collaboration and meeting spaces

Focus on centralized learning commons with STEM spaces above

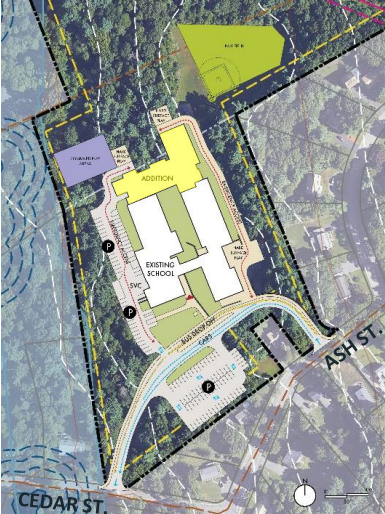




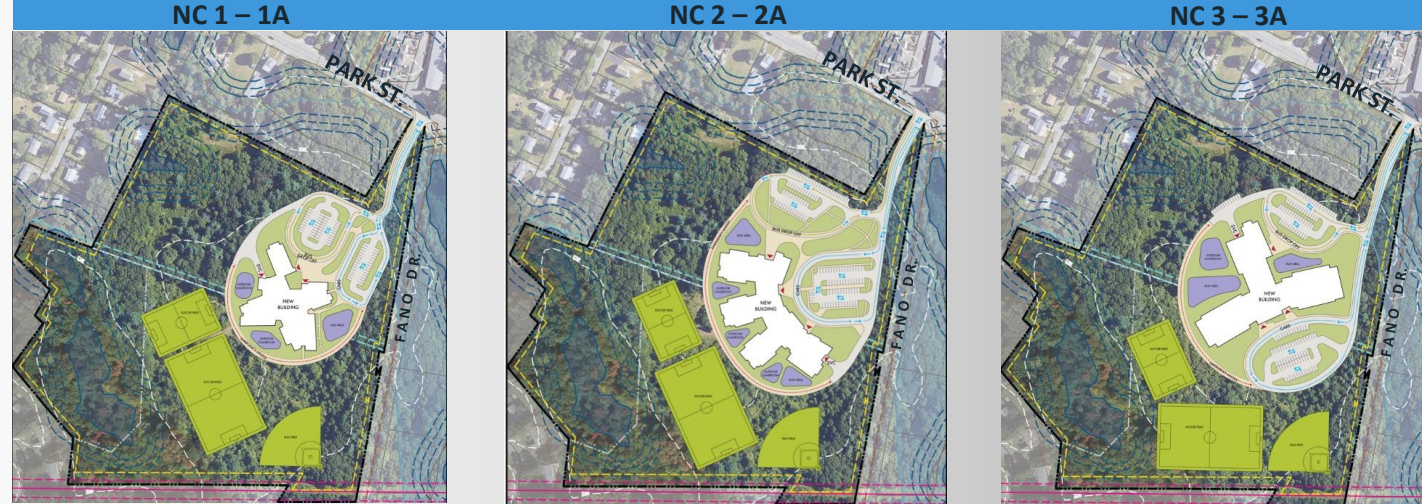
# the new elementary school project

site plans

**REPLACEMENT**  
Project Area:  
12 acres



**REPLACEMENT & CONSOLIDATION** (both enrollments)  
Project Area: 27 acres



'the pinwheel'

'the arc'

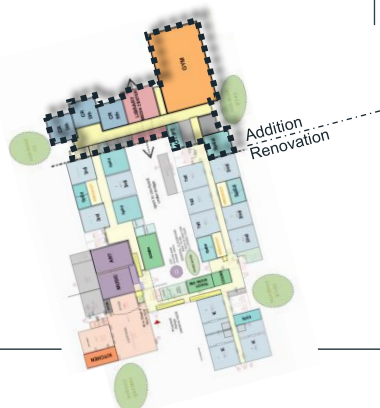
'the tee'

**program key**

- LIBRARY / MEDIA
- GYMNASIUM
- CLASSROOMS
- SPECIAL EDUCATION
- BREAKOUT
- SPECIALS (Art/Music/STEM)
- ADMIN/TEACHER SUPPORT
- CAFETERIA & KITCHEN
- CUST / IT / MAINT
- OUTDOOR LEARNING

floor plans

Addition - Renovation



New Construction: Line Lumber Site





# site plan update | site circulation

Where is it?





# site plan update | site amenities

U-12 Soccer

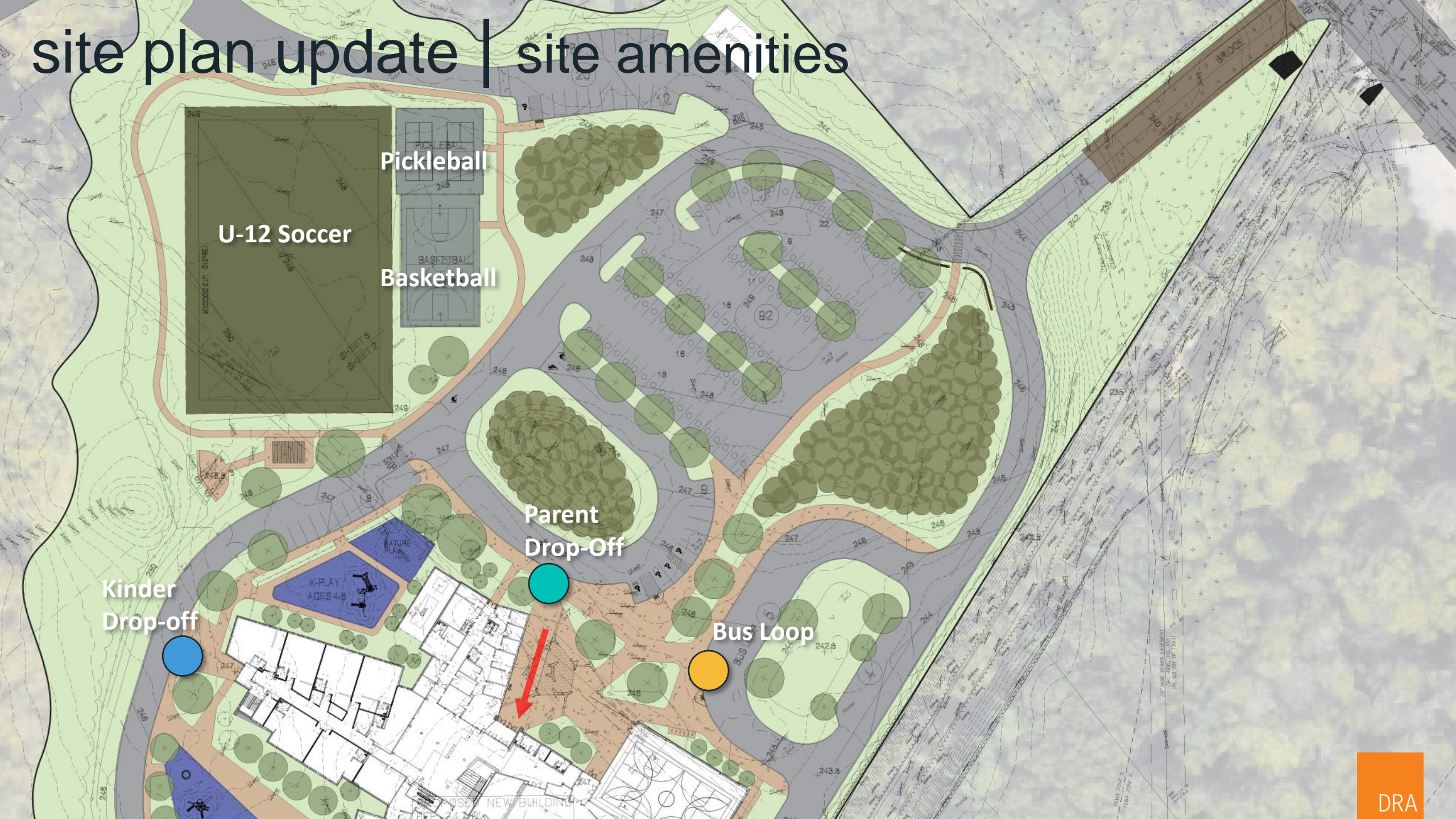
Pickleball

Basketball

Parent Drop-Off

Kinder Drop-off

Bus Loop





# site plan update | outdoor space

K - play

play

play

learn

Use of outdoor spaces & utilization of building as teacher





# design patterns | outdoor learning





# design patterns | nature play





# design patterns | structured play



## Highlights

Structure partially accessible for wheelchair (sloped walkway over a landform)

Customized play structure with varying degrees of challenge

Wood panels are recycled plastic with wood grain



# design patterns | exterior





# design patterns | exterior





# design patterns

# exterior materials

- Brick Veneer
- Stone Veneer
- Insulated Glazing
- Insulated Translucent Panel Systems
- Precast Concrete Improvements
- Standing Seam Roofing
- Membrane Roofing
- Roof Gardens



**hansen**

**wilkins**

**south**

**dawe**

**gibbons**





# design patterns | exterior





# educational plan | new school

design pattern highlights

**Upper and lower school with distinct grade level neighborhoods**

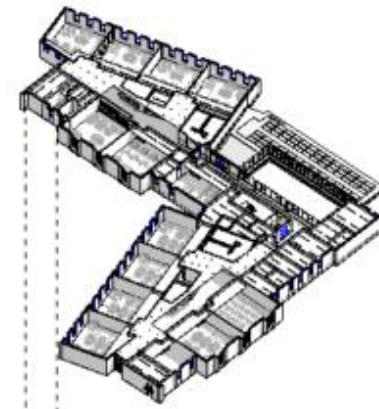
Use of **outdoor spaces** & utilization of **building as teacher**

Focus on building **community areas** secured separately from classroom areas  
*(assembly spaces such as cafe, gym, etc.)*

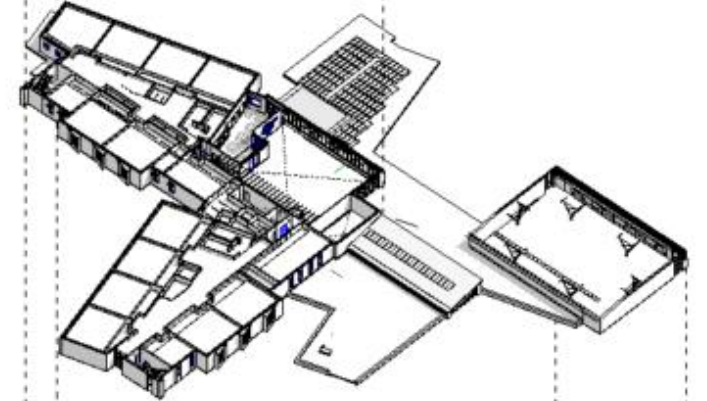
Abundance of **authentic collaboration** and **meeting spaces**

Focus on **centralized learning commons** with **STEM** spaces above

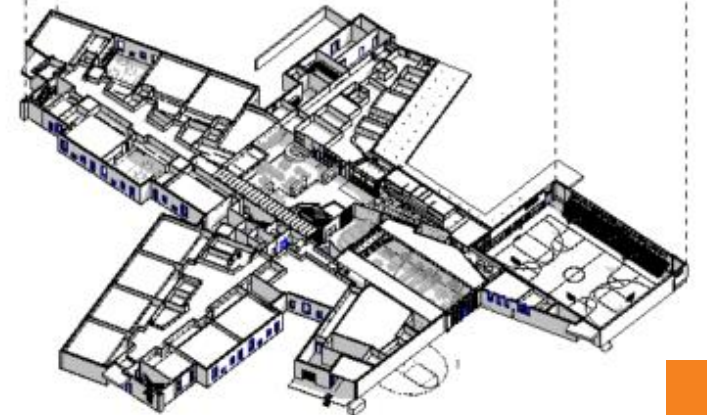
3



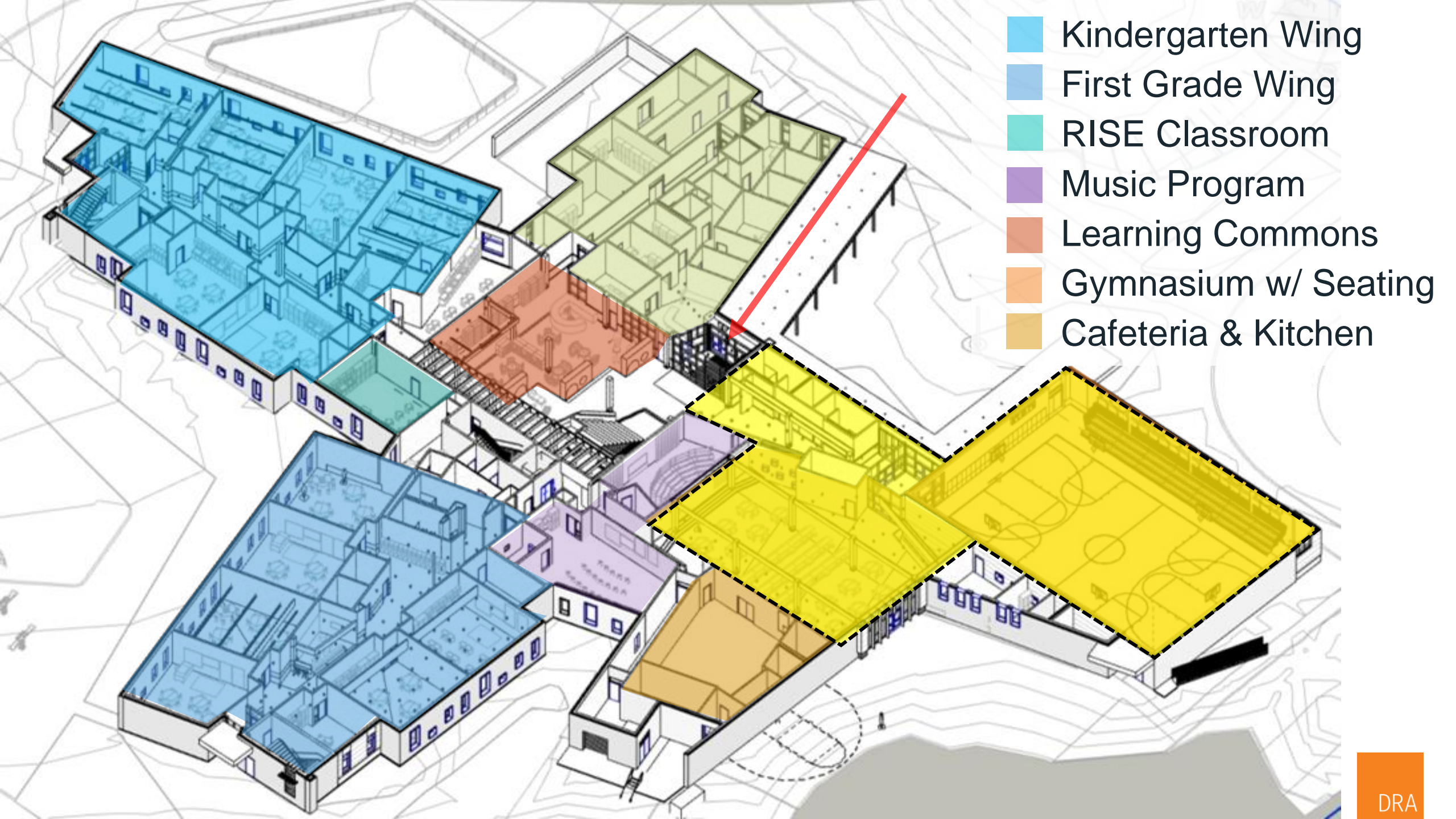
2



1





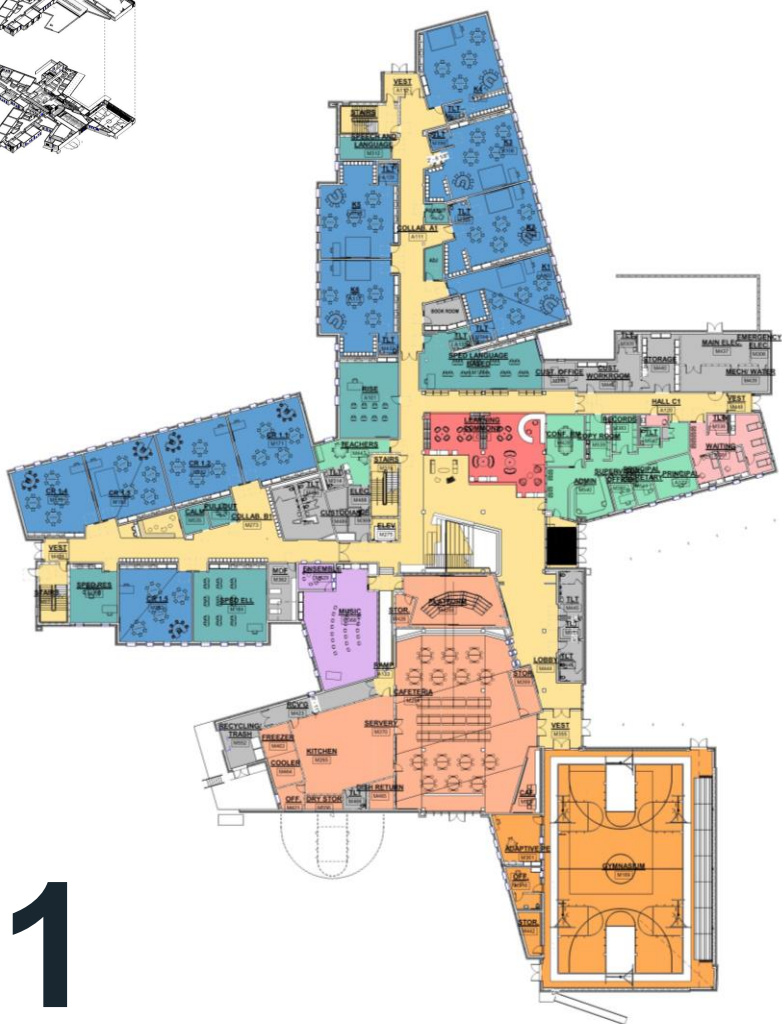
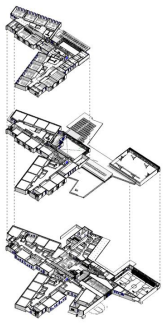


- Kindergarten Wing
- First Grade Wing
- RISE Classroom
- Music Program
- Learning Commons
- Gymnasium w/ Seating
- Cafeteria & Kitchen



# floor plans | new school

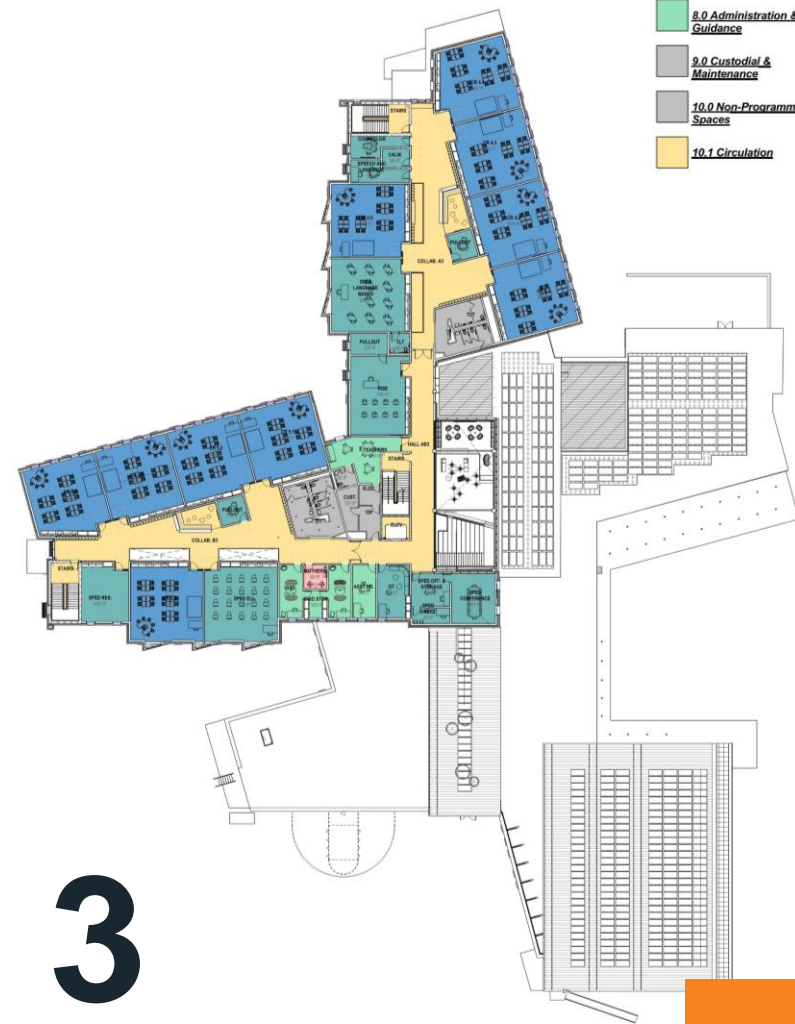
- Department Legend
- 1.0 Core Academic
  - 2.0 Special Education
  - 3.0 Art & Music
  - 4.0 Health & Physical Education
  - 5.0 Media Center
  - 6.0 Dining & Food Service
  - 7.0 Medical
  - 8.0 Administration & Guidance
  - 9.0 Custodial & Maintenance
  - 10.0 Non-Program Spaces
  - 10.1 Circulation



1



2



3



# design patterns | new school

learning commons : heart of the school



Hildreth Elementary School | harvard.ma | ARROWSTREET



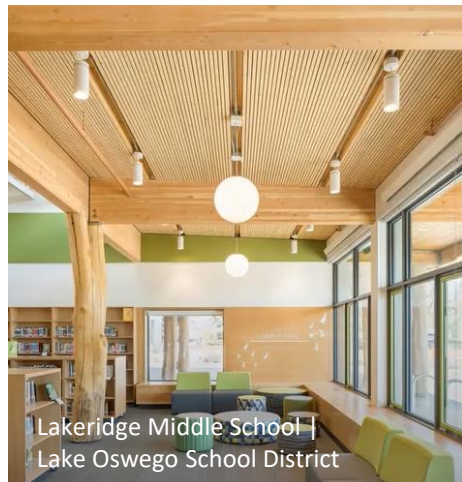
Hildreth Elementary School



Marathon Elementary School | DRA



Anne T. Dunphy Elementary School | DRA



Lakeridge Middle School | Lake Oswego School District



Blake Early Learning Center | HGA



Penn Brook Elementary | DRA







design patterns | learning commons





Focus on centralized learning commons  
with **STEM** spaces above

design patterns | learning commons





design patterns | learning commons





design patterns | STEM



Focus on **centralized learning commons**  
with **STEM** spaces above



design patterns | STEM



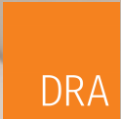


design patterns | classroom and collaboration



Abundance of **authentic collaboration**  
and **meeting spaces**

design patterns | classroom and collaboration







Focus on building **community areas**  
secured separately from classroom areas

design patterns | cafeteria





design patterns | cafeteria





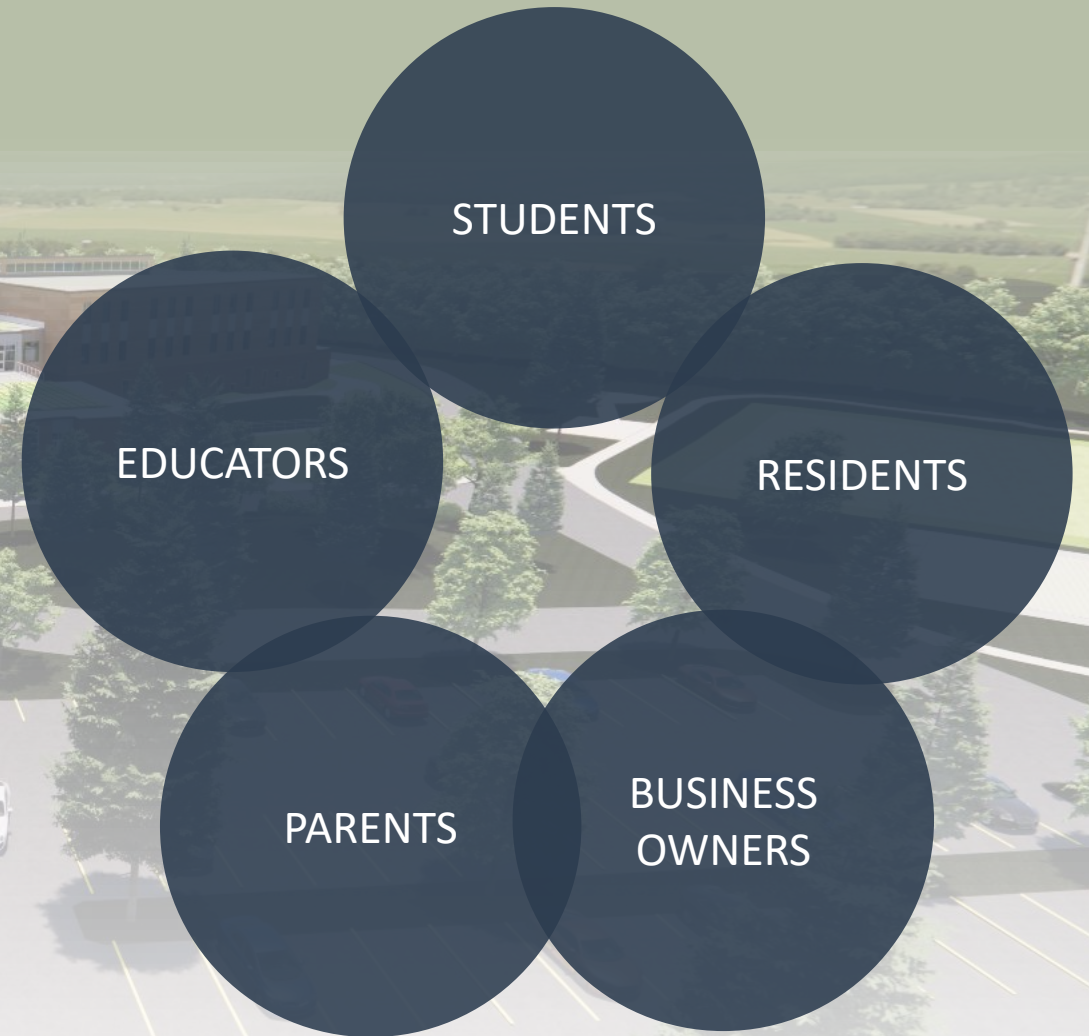
Focus on building **community areas**  
secured separately from classroom areas

design patterns | gym



# community benefits

- **Improved Quality of Education**
- **Site Amenities**
- **Community Space**
- **Improved Traffic Patterns**
- **Long-Term Value for Stoughton**
- **Pride in Community**
- **Facilitates Future Growth**





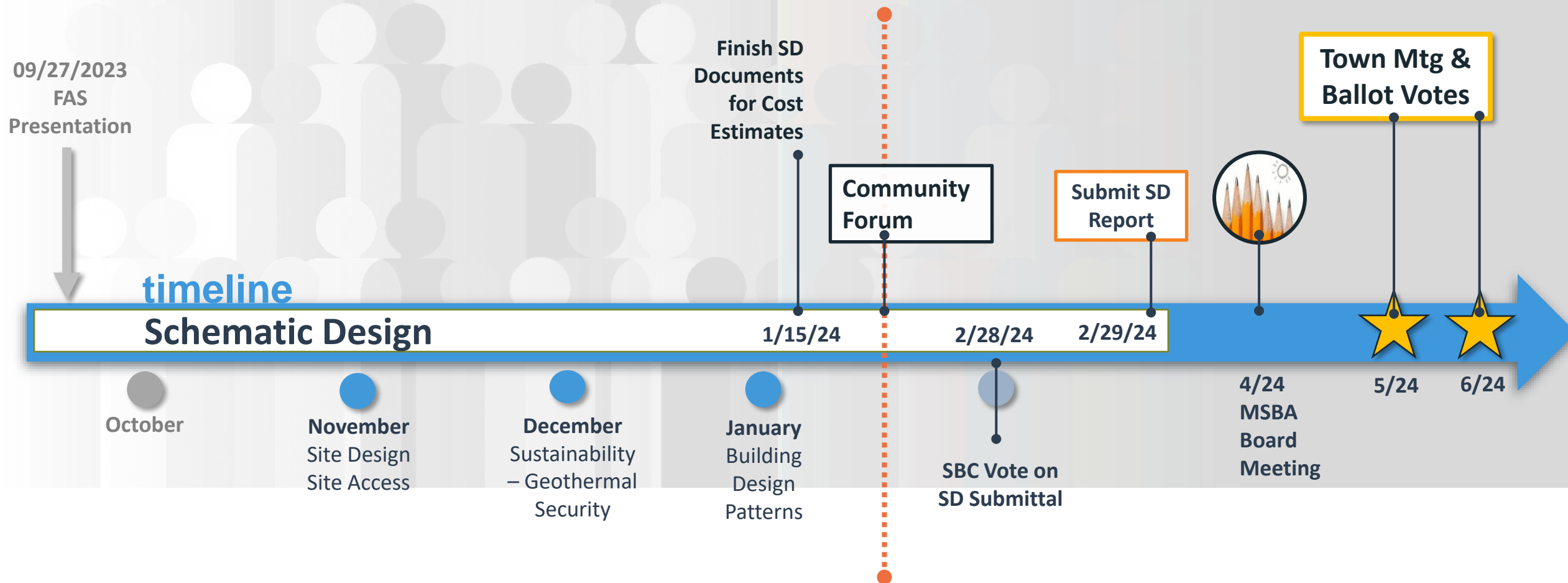
# ongoing project tasks

- **Project Costs: February 2024**
- **MSBA Reimbursement Increased**
- **Future of South, Wilkins & Jones Study Ongoing**





# project timeline



## The New Stoughton Elementary School Project





# the new stoughton elementary school project

# thank you!

Next School Building Committee Meeting:  
February 7<sup>th</sup> 2024

# questions?

<https://www.stoughtonschools.org>



**Suggestions?**  
Check out the website!  
Email us at  
[NewElementarySchool@stoughtonschools.org](mailto:NewElementarySchool@stoughtonschools.org)

**Sugestões?**  
Confira o site!  
Envie-nos um e-mail para  
[NewElementarySchool@stoughtonschools.org](mailto:NewElementarySchool@stoughtonschools.org)

**The New Elementary  
School Building  
Committee**



**Stoughton Public Schools**  
Home of the Black Knights • Stoughton, MA



**Massachusetts School Building Authority**  
*Funding Affordable, Sustainable, and Efficient Schools in Partnership with Local Communities*

**VERTEX**<sup>®</sup>

