



<https://www.stoughtonschools.org>

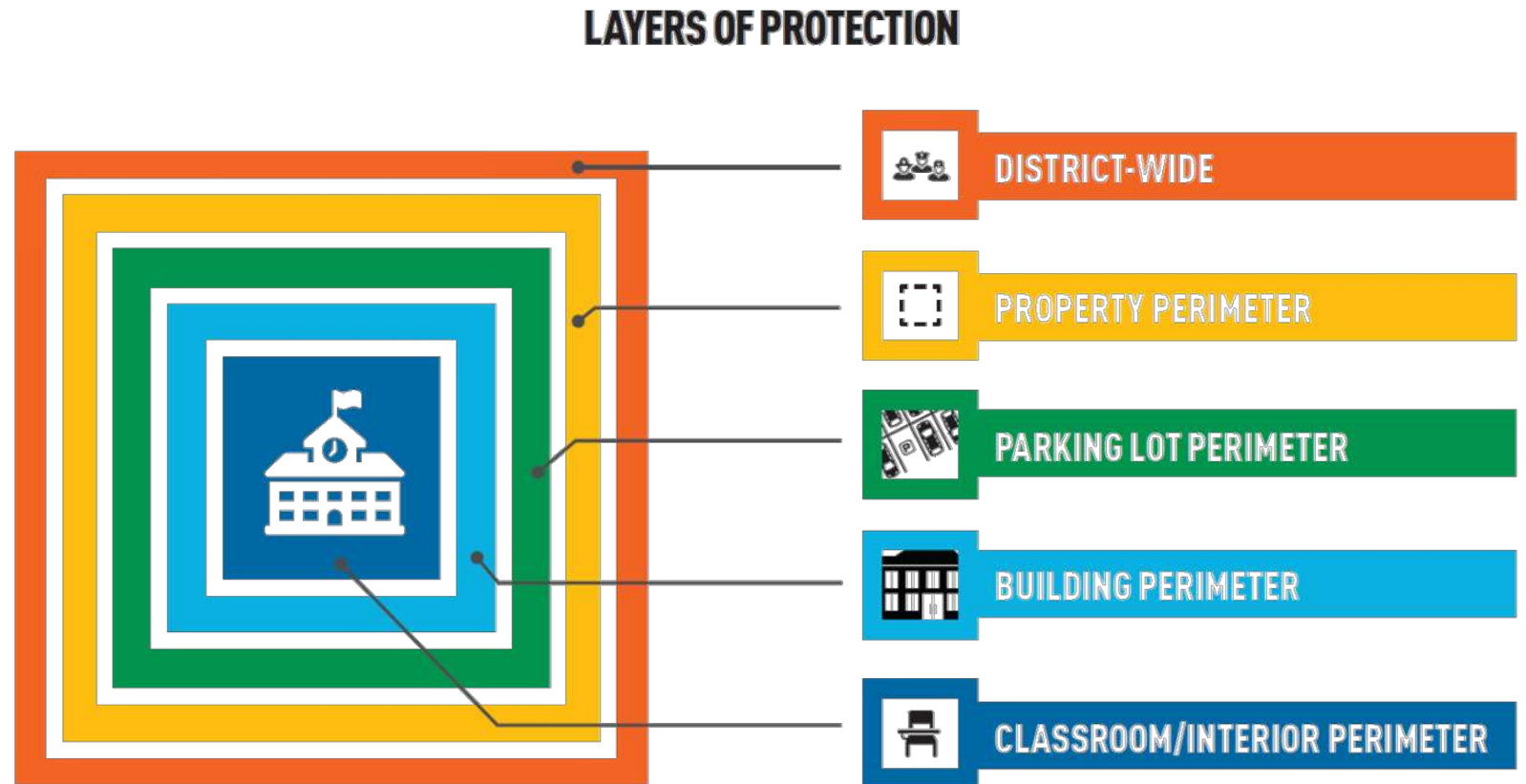
# December 13, 2023

- Site & Building Security
- Proprietary Items
- Exterior Finishes & Materials
- Interior Finishes & Materials
- Proprietary Items

The New Elementary School | [stoughton.ma](https://stoughton.ma)  
**SBC Meeting**

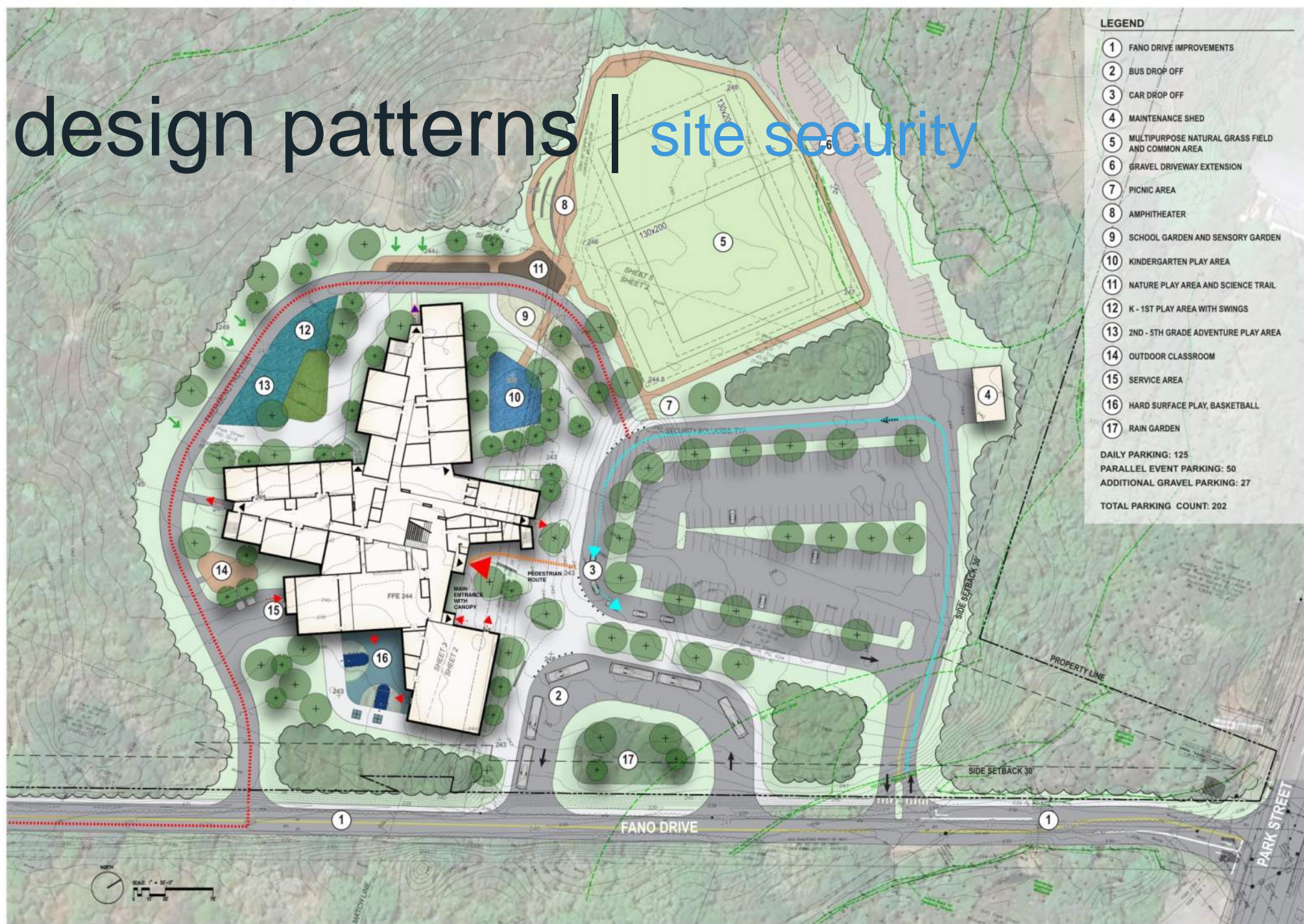
# design patterns | building security

- Site Security
- Exterior Cameras
- Building Envelope
- Door Hardware & Keying
- Access Control
- Interior Cameras
- Fire Alarm & Notification Systems



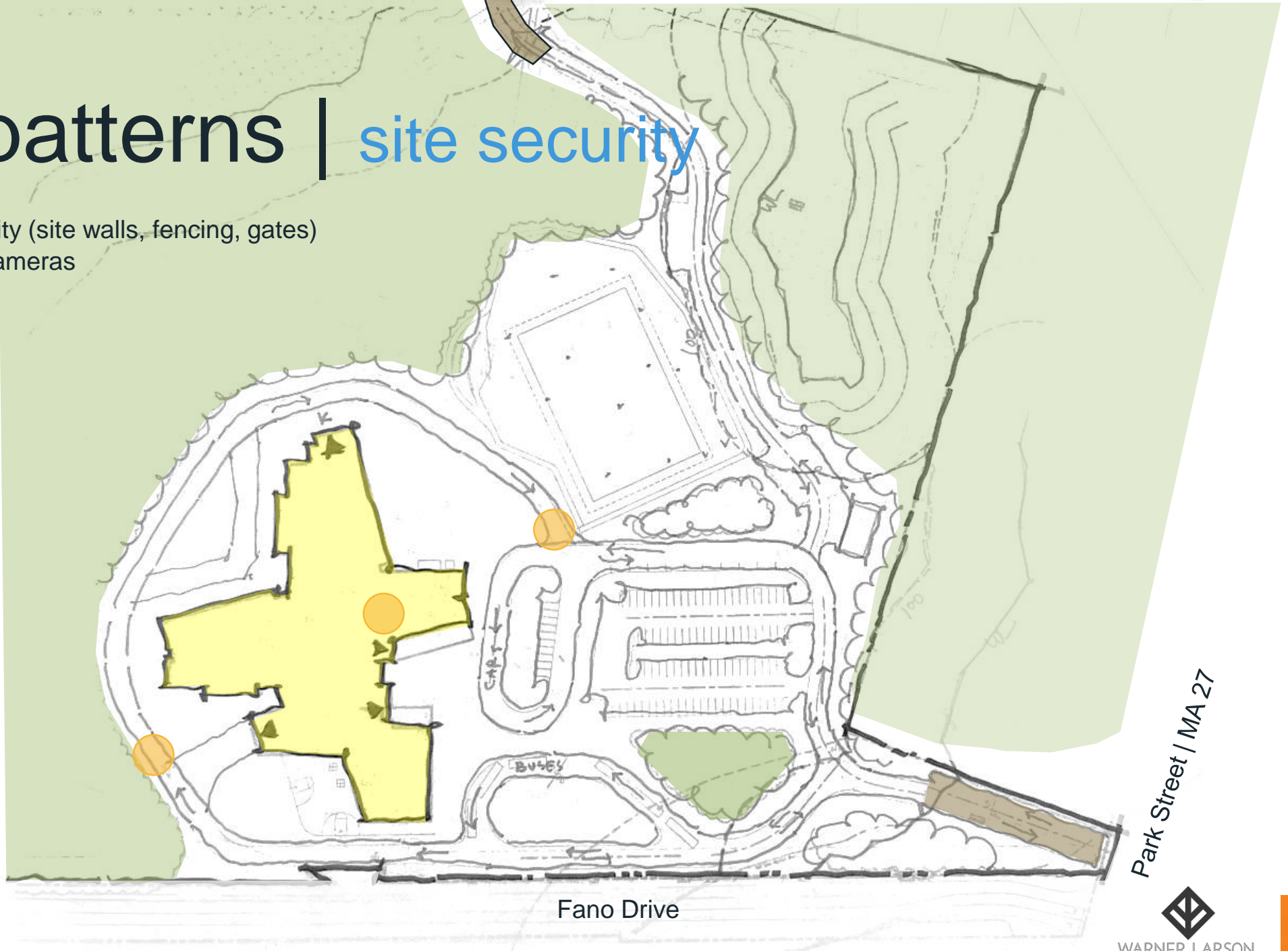
# design patterns | site security

- LEGEND**
- ① FANO DRIVE IMPROVEMENTS
  - ② BUS DROP OFF
  - ③ CAR DROP OFF
  - ④ MAINTENANCE SHED
  - ⑤ MULTIPURPOSE NATURAL GRASS FIELD AND COMMON AREA
  - ⑥ GRAVEL DRIVEWAY EXTENSION
  - ⑦ PICNIC AREA
  - ⑧ AMPHITHEATER
  - ⑨ SCHOOL GARDEN AND SENSORY GARDEN
  - ⑩ KINDERGARTEN PLAY AREA
  - ⑪ NATURE PLAY AREA AND SCIENCE TRAIL
  - ⑫ K - 1ST PLAY AREA WITH SWINGS
  - ⑬ 2ND - 5TH GRADE ADVENTURE PLAY AREA
  - ⑭ OUTDOOR CLASSROOM
  - ⑮ SERVICE AREA
  - ⑯ HARD SURFACE PLAY, BASKETBALL
  - ⑰ RAIN GARDEN
- DAILY PARKING: 125  
 PARALLEL EVENT PARKING: 50  
 ADDITIONAL GRAVEL PARKING: 27  
 TOTAL PARKING COUNT: 202



# design patterns | site security

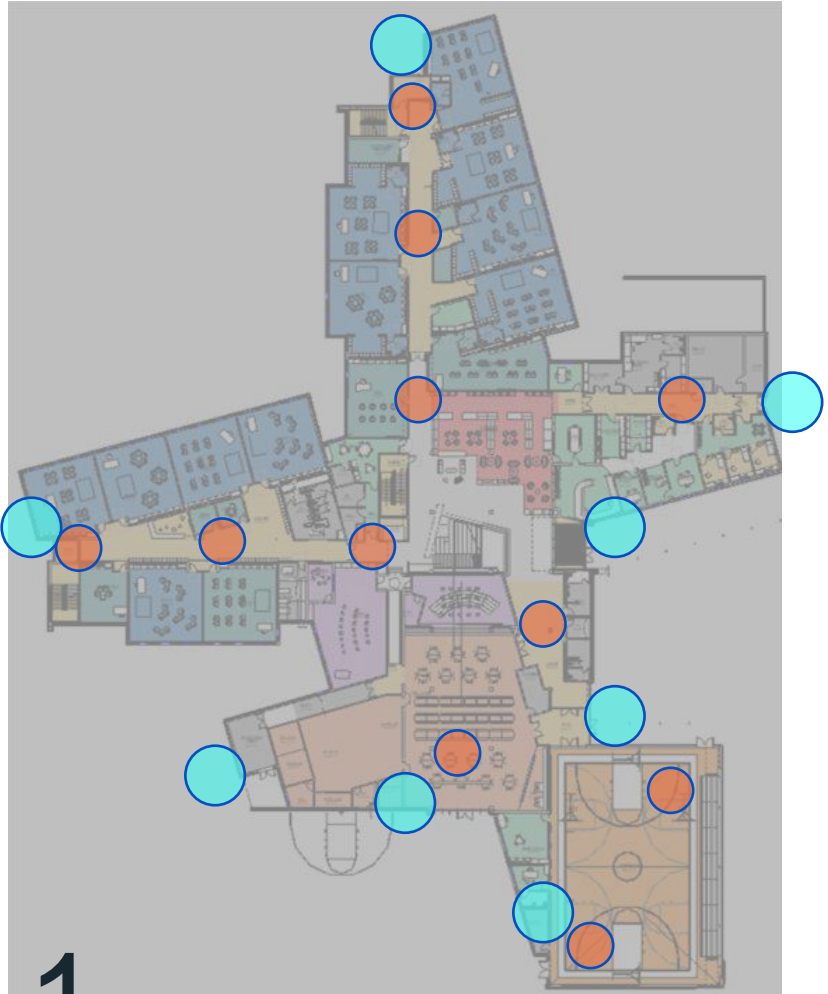
- Site Security (site walls, fencing, gates)
- Exterior Cameras



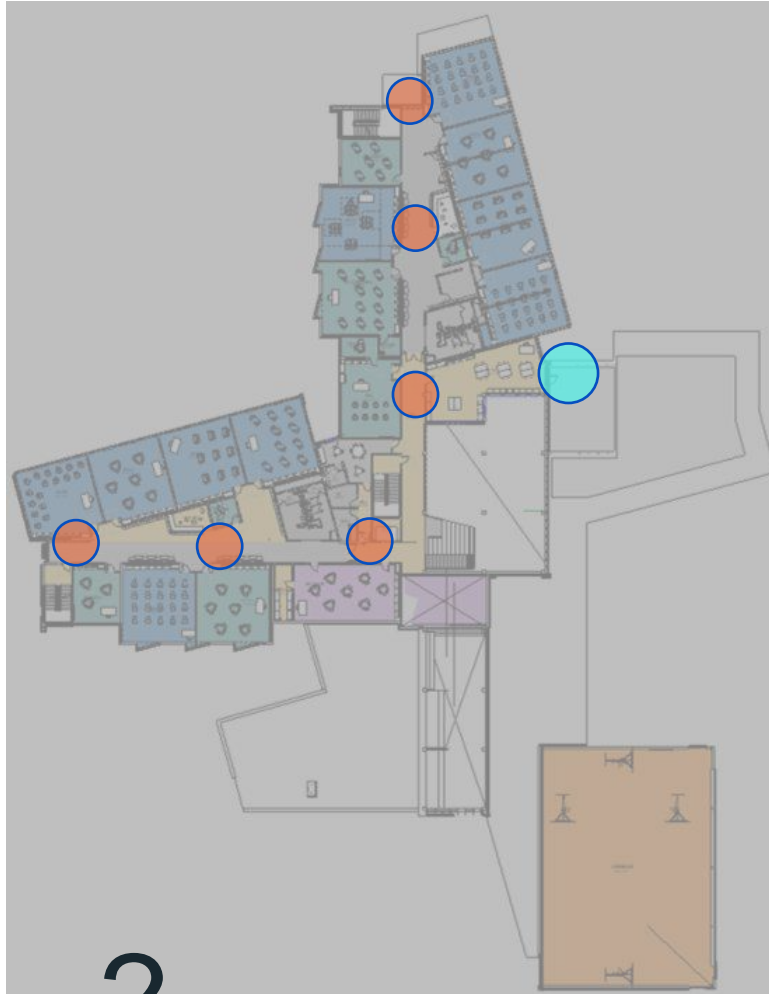
Park Street | MA 27

Fano Drive

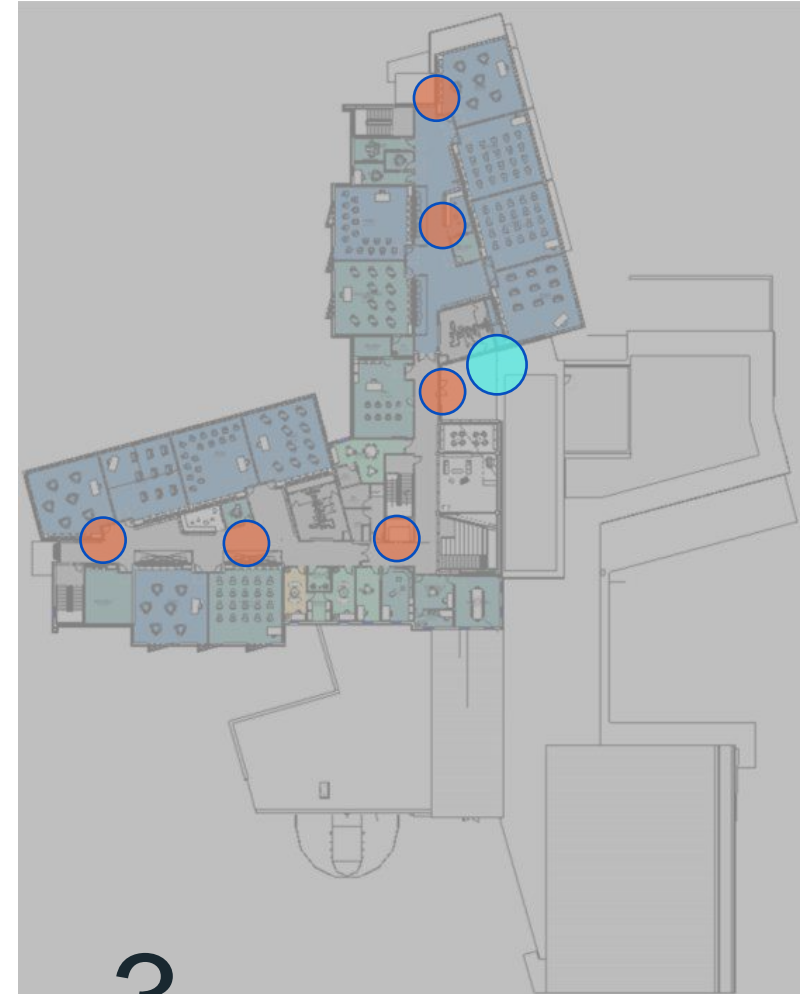
# design patterns | building camera locations



1



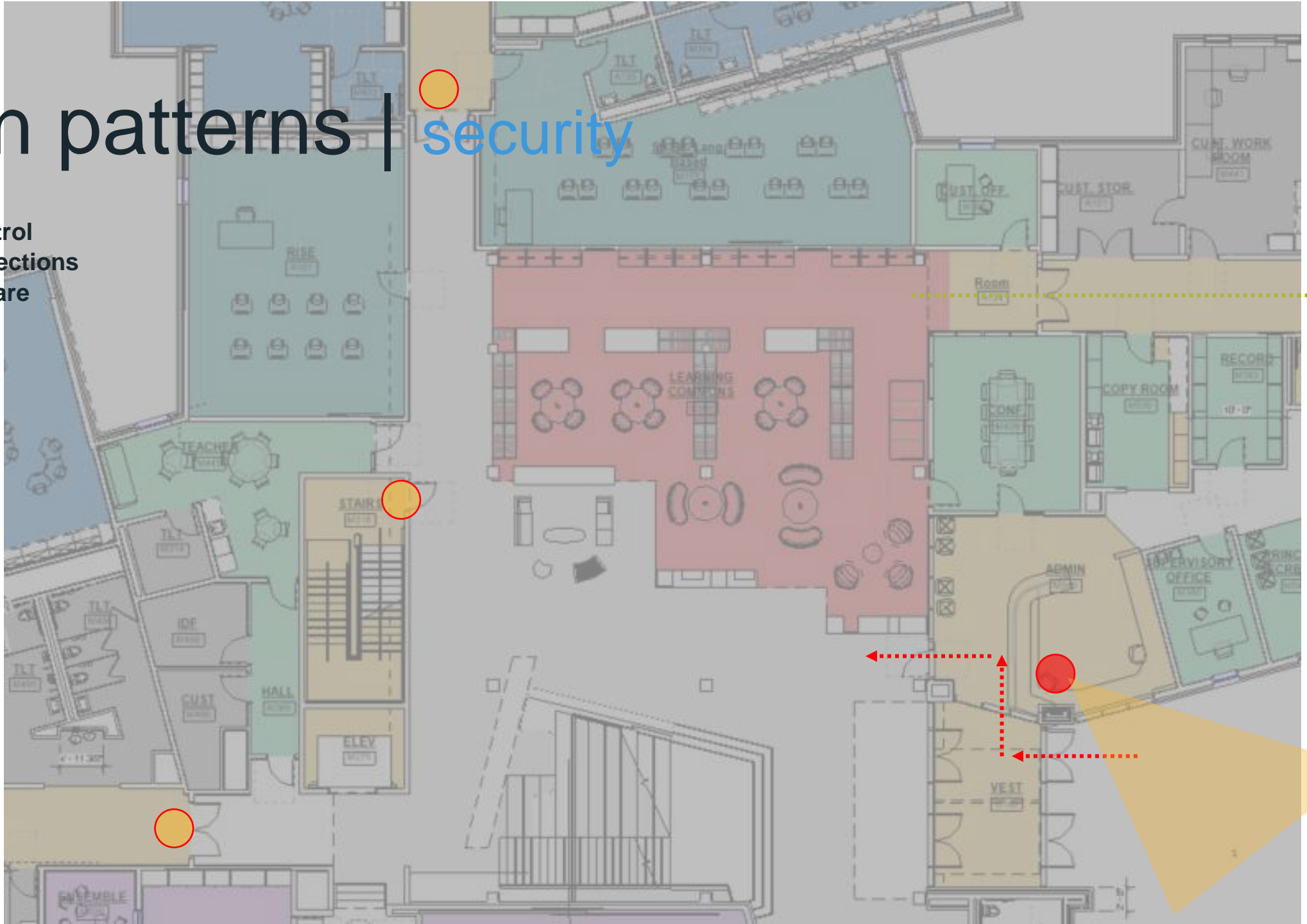
2



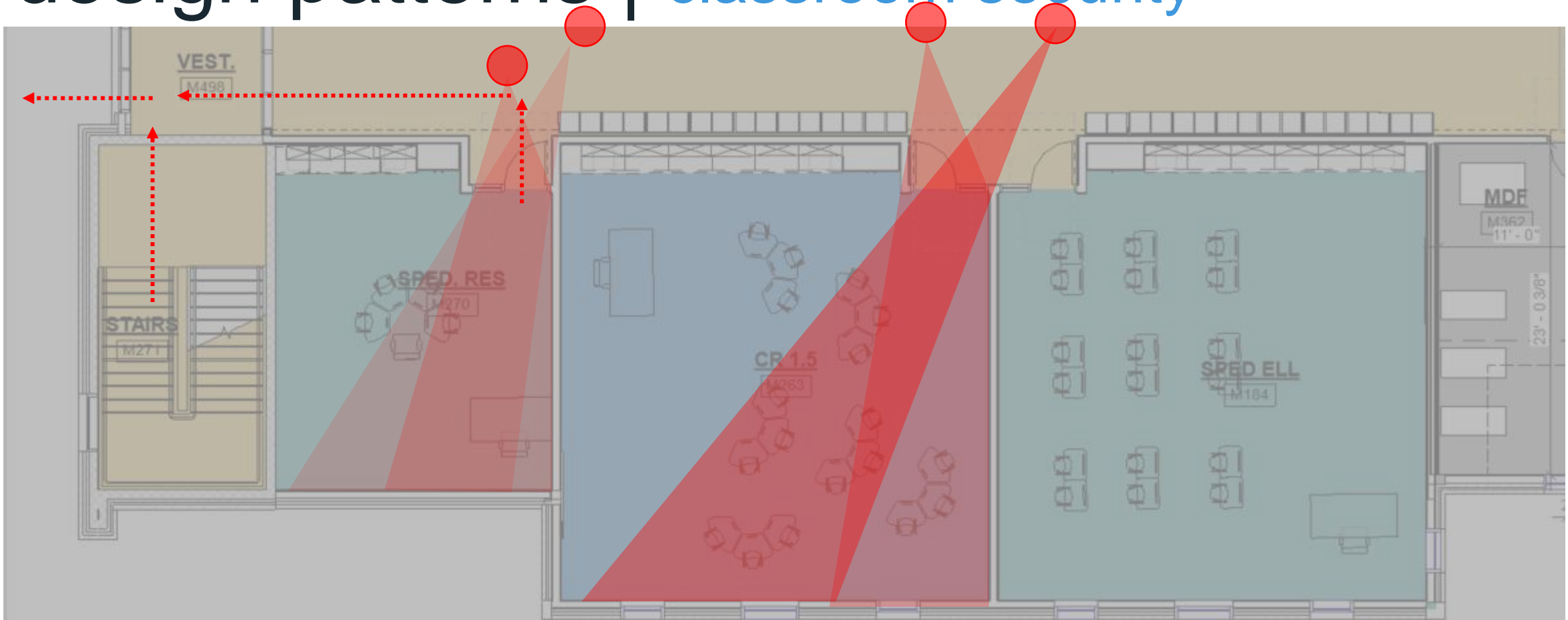
3

# design patterns | security

- Cameras
- Access Control
- Visual Connections
- Door Hardware



# design patterns | classroom security



- Visual Connections
- Door Hardware

# proprietary items | project requirements

- Access Control
- Security
- Door Hardware
- HVAC Controls
- HVAC Equipment
- Phone Systems
- Systems and/or materials that need to be consistent with other District-Wide standards



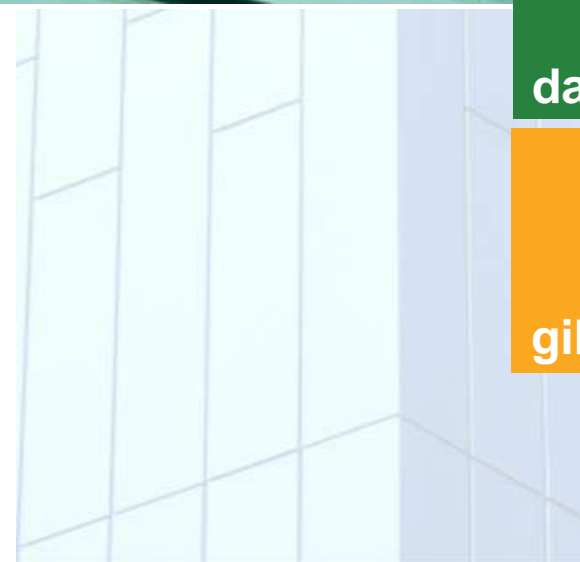
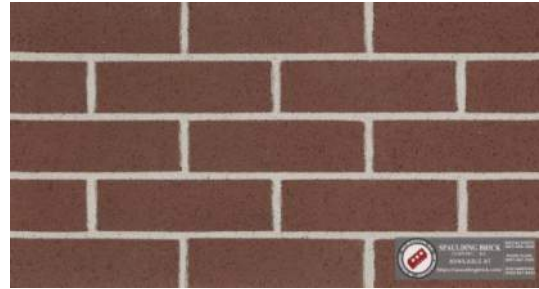


# design patterns | exterior finishes

Location Notes	
Brick	Throughout Façade
Stone Veneer	Accent Areas on Building Façade, Water Table below FRC
Precast	Window Sills, Specialty Areas
Fiber Reinforced Concrete	Throughout Façade – does not come to ground.
Metal Panel	Window Accents, Specialty Areas
Standing Seam Roof	Sloped Roofs
Glazing	Insulated Glazing – Currently 2-pane



# design patterns | exterior



**hansen**

**wilkins**

**south**

**dawe**

**gibbons**



DRA

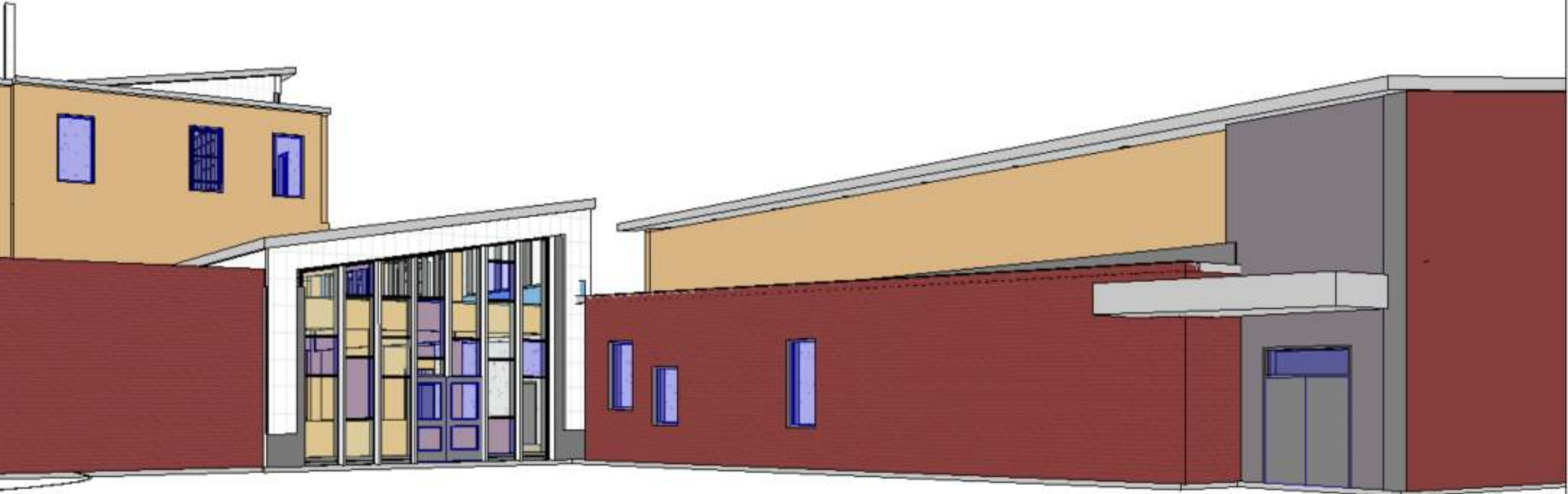
# design patterns | exterior



# design patterns | exterior



# design patterns | exterior





design patterns | exterior



# design patterns | exterior



# design patterns | new school

learning commons : heart of the school



Hildreth Elementary School | harvard.ma | ARROWSTREET



Hildreth Elementary School



Marathon Elementary School | DRA



Anne T. Dunphy Elementary School | DRA



Lakeridge Middle School | Lake Oswego School District



Blake Early Learning Center | HGA

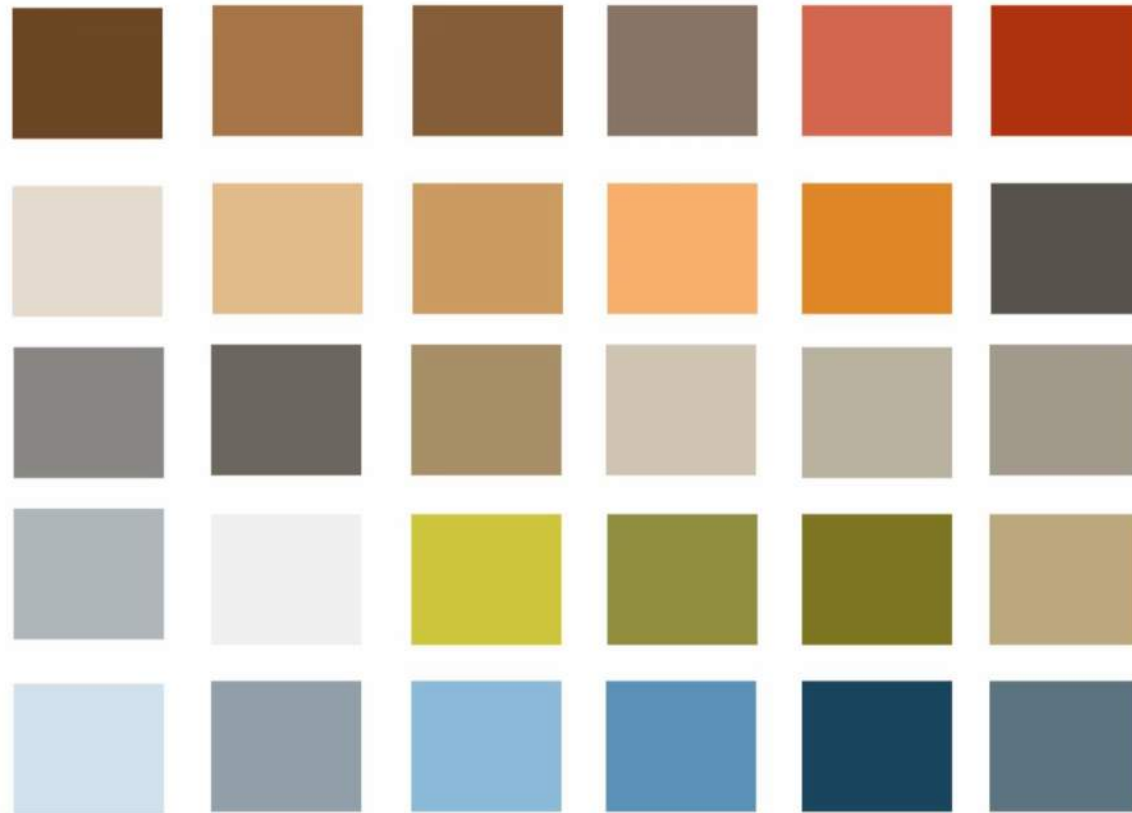


Penn Brook Elementary | DRA





# design patterns | interior



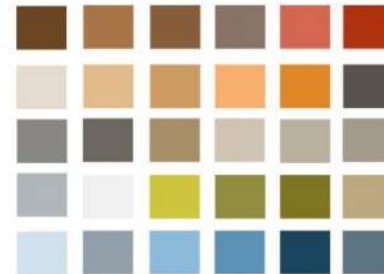
COLOR PALETTE



# design patterns | interior finishes

	Floors	Walls	Ceiling	Notes
Lobby	Porcelain Paver	Gyp w/ Wood Finishes, Graphics	Varies	
Learning Commons	Flotex	Painted Gypsum	Varies	
Cafeteria	Linoleum	Painted Impact Resistant Gyp	Varies: ACT, Linear Wood	Acoustic Baffles and Some Acoustic Wall Panels
Gym	Wood	Painted CMU	Acoustic Metal Deck	Tectum Panels on Walls
Classrooms	Linoleum	Painted Gypsum	Acoustic Ceiling Tile	
Specials	Linoleum	Painted Gypsum	Acoustic Ceiling Tile	Diffusers in Music Room
Kitchen	Epoxy	Ceramic Tile	Gyp & High Humidity ACT	
Bathrooms	Mosaic Tile	Ceramic Tile	Gypsum	Partitions w/ Texture/Pattern
Corridors	Linoleum	Painted Gypsum w/ Ceramic Tile Wainscot	ACT	
Offices	Carpet	Painted Gypsum	ACT	
Pullout/Calm	Flotex	Painted Gypsum, Acoustic Panels High	ACT	

# design patterns | interior finishes



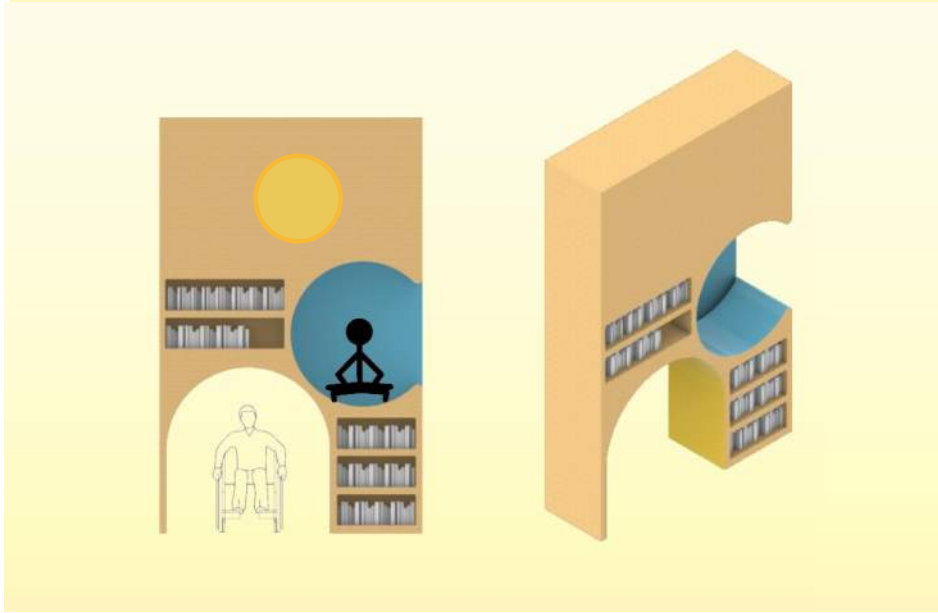
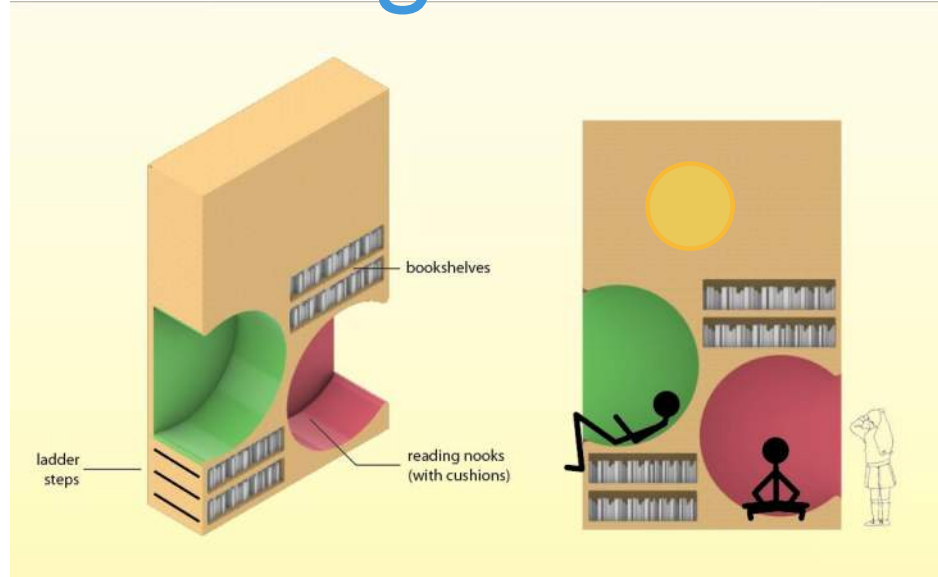
COLOR PALETTE



# design patterns | learning commons



# design patterns | learning commons



# design patterns | learning commons



# design patterns | stem



# design patterns | collaboration





# design patterns | classroom



# design patterns | cafeteria



# design patterns | gym



End of Presentation | thank you