

Crawford High School Prom Dress Code

**This dress code applies to both
CISD students and their dates**

Updated January 2024

Why do we have a dress code?

CHS staff and Administration wants you to make good choices. We are not trying to inhibit your style. Prom should be fun, but we want everyone to be comfortable and safe. With modesty in mind, the following dress code guidelines will be enforced.

CISD Students and Dates

- The following rules and guidelines apply to both Crawford High School students and their dates. It is the responsibility of the students of CISD to inform their dates of these guidelines.**
- These guidelines have been adopted by the Administration of Crawford High School and developed with the advice of the district - level committee. This code provides information to parents and students regarding Prom attire. Students not abiding by these guidelines will not be allowed to enter Prom.**

CISD Students and Dates cont

- Outside dates must be paid for in advance.**
- Prom dates must not be older than 20 years of age.**
- Students in grades 9, 10, 11, or 12 only are allowed to attend Prom.**
- Crawford students must arrive and leave with the date that they have originally indicated and paid for in advance.**

Neckline guidelines

- Necklines of female students must be modest.
- Sweetheart necklines are allowed if the center cut is not too low.
- Strapless dresses are not allowed regardless. One shoulder straps are allowed.

If you have questions about a dress, please contact
Mrs. Lightfoot at the high school
254-486-2381 or email her at
dlightfoot@crawford-isd.net

Body piercing, tattoos and hair code

NOT ALLOWED -

- Body piercing jewelry (nose, eyebrows, any facial piercing) Spacers for body piercing.
- Visible tattoos.
- Cosmetic contact lenses of a color not natural to a person or patterned lenses unless such color or pattern is prescribed by a doctor as necessary for sight correction.
- Hair colors not natural to a person (i.e. green, orange, purple, etc), or spiked hair.

MALE HAIR CODE-

- The length of the hair of male students and dates must not be long enough to extend below the eyebrow, extend completely over the collar, or be excessively full on the sides or in the back. The hair may not extend or cover over one-half of the ear and sideburns must not extend past the ear lobe nor should they extend forward on the face. All male students should be clean shaven (beards and mustaches are not permitted). Rattails, strands of hair or any other type of tail are not permitted. Any design in the hair is prohibited.

Pinning and Fabric Inserts

- **No pinning will be allowed as an alteration for a dress if without the pins the dress does not meet dress code**
- **Fabric inserts must be sewn not pinned on the dress if without the insert the dress does not meet dress code**
- **No cover-ups (coats, shawls, sweaters) will be allowed over the dresses that do not meet dress code**

Dresses may be backless as long as they are not cut below the naval.



This dress meets the dress code guidelines according to the neckline and the back.

This dress does not meet the dress code guidelines



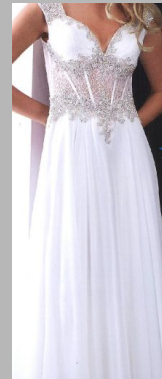
Two piece dresses ARE allowed.



Allowed. Top overlaps skirt



Not allowed

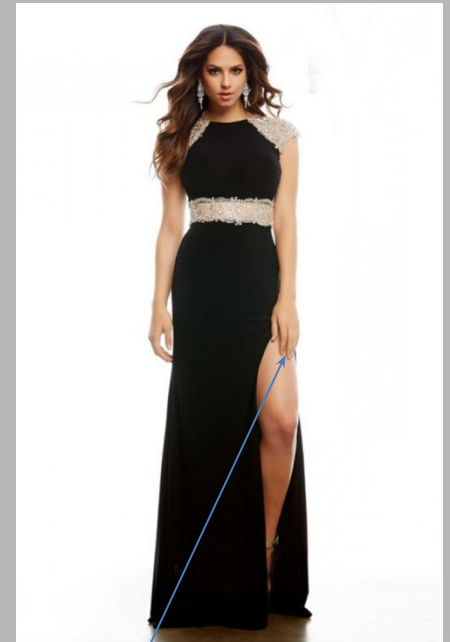


Sheer panel in the middle allowed

Dresses may not have a slit that exceeds mid-thigh. This is fingertip length.



Appropriate length



Inappropriate length

Dresses must be ankle or floor length.



Appropriate length



Inappropriate length

**Strapless dresses are not allowed.
Sweetheart necklines are allowed if
the neckline is not too low exposing
cleavage**

Strapless



**Sweetheart
neckline**



There are many beautiful and stylish dresses that do meet dress code



Does not meet dress code guidelines



Back too low



Sweetheart neckline



Strapless



Too short