

Ferndale Elementary School

**SCHOOL PLAN FOR
STUDENT
ACHIEVEMENT (SPSA)**

FEBRUARY 2024

What is the SPSA?

- Plan to improve student outcomes using federal funds.
- Developed and monitored annually by the School Site Council.

2022-2023

Who are our students at FES?

- Total Enrollment 344
 - Socioeconomically Disadvantaged 49.1%
 - English Learners 6.7%
 - Foster Youth .3%

FES-SPSA

- Schoolwide Program that is focused on improving outcomes for all FES students.
- Conduct a comprehensive needs assessment by the following:
 - Student, Parent, Teacher, and Community Member surveys.
 - Leadership meetings such as Grade-level Chair meetings and staff meetings.
 - Classroom observations
 - Empathy Interviews with students.
 - Data Analysis of Satellite data and Street level data. For example, Satellite data would be CAASPP or NWEA and Street data is unit assessments, formative assessment, exit tickets.



HOW ARE OUR STUDENTS PERFORMING (OVERALL)?



Red

Lowest Performance



Orange



Yellow



Green



Blue

Highest Performance

2023 Fall Dashboard Overall Performance for All Students

Academic Performance

English Language Arts



Yellow

**Improved Growth in
ELA!**

Mathematics



Green

**Great Growth in
Math!**

Academic Engagement

Chronic Absenteeism



Orange

Opportunities for Improvement

Conditions & Climate

Suspension Rate



Red

OPPORTUNITIES FOR GROWTH




What does this Satellite data mean?

2023 Fall Dashboard Chronic Absenteeism Equity Report



This section provides information about the percentage of students in kindergarten through grade 8 who are absent 10 percent or more of the instructional days they were enrolled.

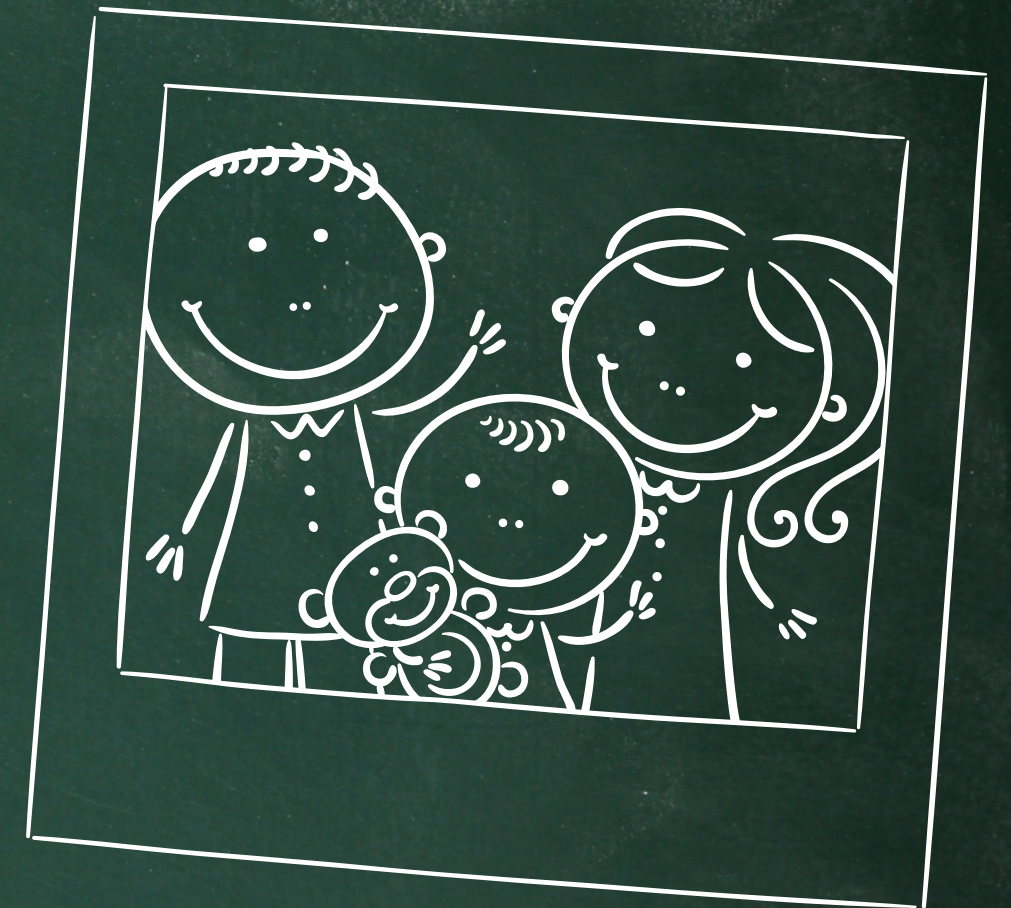
2023 Fall Dashboard Chronic Absenteeism for All Students/Student Group

All Students	English Learners	Foster Youth
 Orange 20.9% Chronically Absent Declined -1.3 354 Students	21.7% Chronically Absent Declined -5.2 23 Students	Less than 11 Students 2 Students
Homeless	Socioeconomically Disadvantaged	Students with Disabilities
Less than 11 Students 2 Students	 Red 29.6% Chronically Absent Maintained 0.3 186 Students	 Orange 27.8% Chronically Absent Declined -6.4 72 Students

What is Ferndale Elementary School doing about Chronic Absenteeism?

Plan of Action

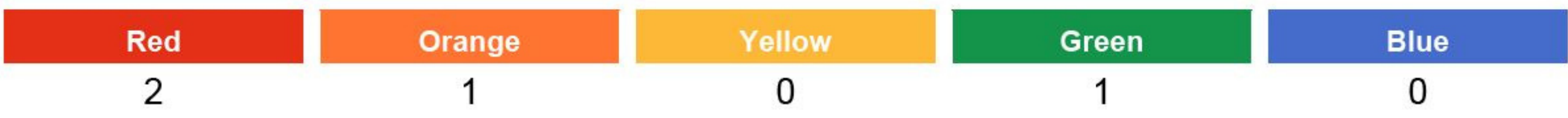
1. Strengthening relationships with students, teachers, and parents.
2. Greeting students at the classroom door.
3. Calling home to tell students we've missed them.
4. Class incentives for the highest Average Daily Attendance.
5. Holding Parent meetings for students who are already chronically absent.
6. Including attendance data in data days for teachers to analyze.
7. Coordinating a district empathy interview committee to meet with students and parents regarding attendance, behavior, and school improvement.
8. Beginning a pilot with Attendance Works.



OPPORTUNITIES FOR GROWTH






2023 Fall Dashboard Suspension Rate Equity Report



This section provides information about the percentage of students in kindergarten through grade 12 who have been suspended at least once in a given school year. Students who are suspended multiple times are only counted once.

2023 Fall Dashboard Suspension Rate for All Students/Student Group

All Students	English Learners	Foster Youth
 Red 5.3% suspended at least one day Increased Significantly 2.6 359 Students	0% suspended at least one day Declined -3.8 25 Students	Less than 11 Students 2 Students
Homeless	Socioeconomically Disadvantaged	Students with Disabilities
Less than 11 Students 2 Students	 Red 7.9% suspended at least one day Increased Significantly 3.5 190 Students	 Green 2.7% suspended at least one day Declined -1.2 73 Students

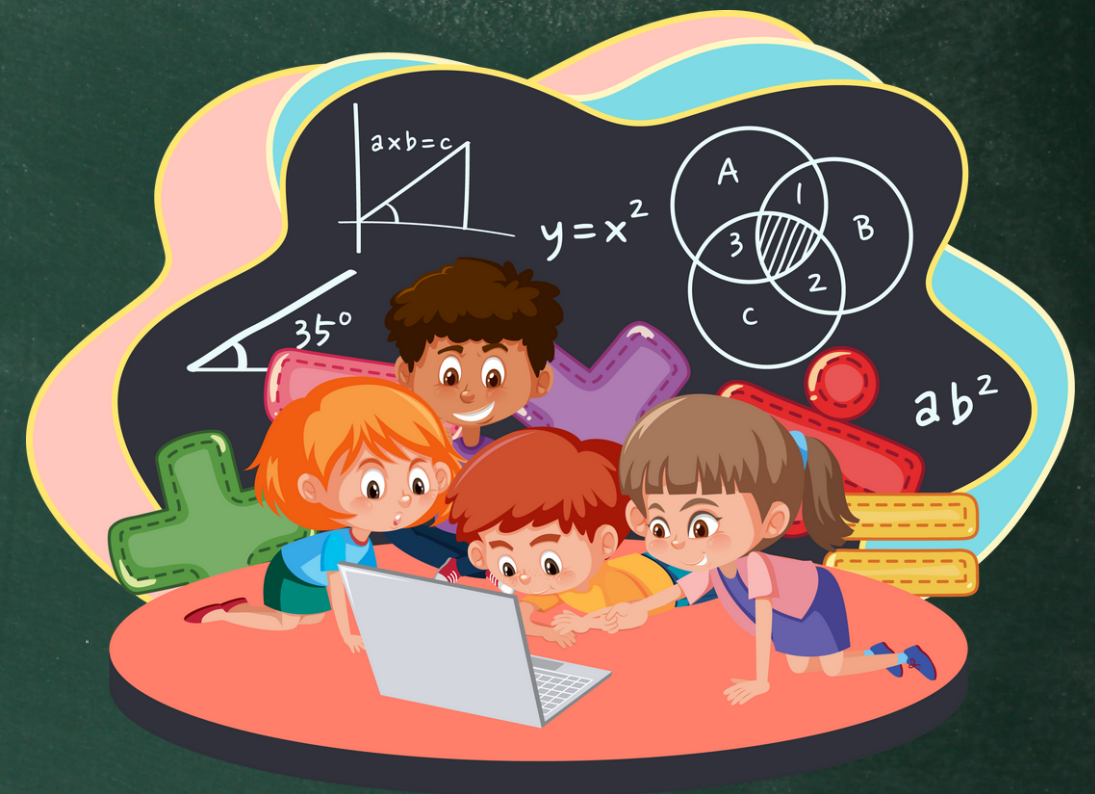
What does this Satellite data mean?

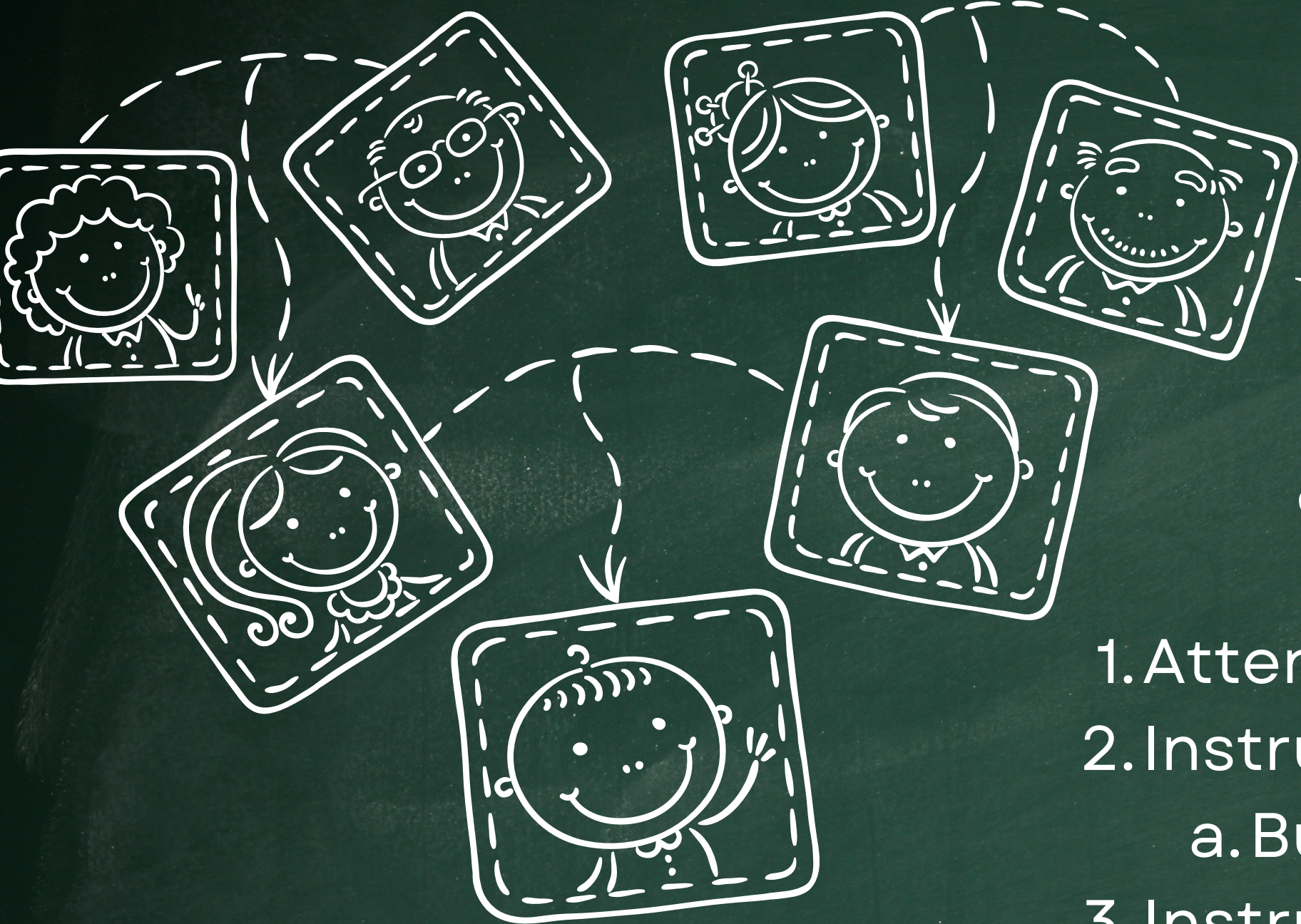


What is Ferndale Elementary School doing about Suspension Rates?

1. Strengthening relationships with students, teachers, and parents.
2. Greeting students at the classroom door.
3. Having students call home to report small misbehaviors.
4. Using alternative means to suspension when possible.
5. Holding Parent meetings for students who are already being suspended or who are close to having these consequences.
6. Reviewing Intra-district agreement requirements.
7. Coordinating a district empathy interview committee to meet with students and parents regarding attendance, behavior, and school improvement.

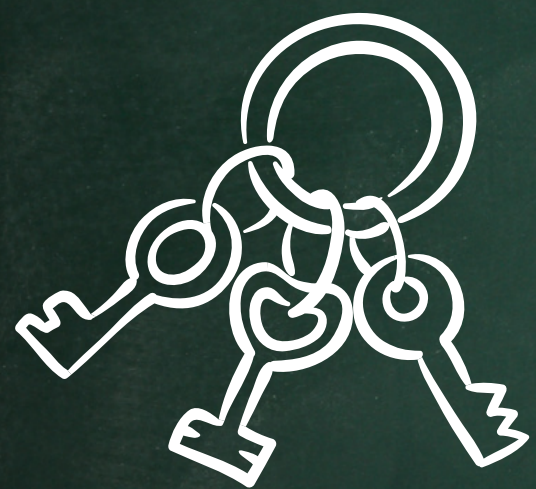
Plan of Action





What our Federal Funds are doing to help.

1. Attendance Clerk
2. Instructional Aides for push-in services
 - a. Build relationships with students
3. Instructional Coach/Math Intervention
4. Classroom supplies such as manipulatives.
5. Professional development focused on the Improvement Science



Total Funds: 251,304.00

Total Expenditures: 251,304.00