



THE TUBA

1953

Vol. 40
**Stairway
 to the Stars
 Edition**



Presented by

ANNA PRICE
 Editor

SHIRLEY EDMOND
 Co-editor

CALVIN EGGERS
 Business Manager

DORIS MARTENS, NINA PROST

MARIE SCHLIMPERT, KATHRYN FASSOLD, DARLENE LEIMBACH
 EARLENE OCHS, SHIRLEY MODDE, DALE SCHRUMPF

Editorial Staff
 SHIRLEY LOBERG

Art Editor
 RUBY STEFFENS, PEGGY LAKENAN
 ROGER ROTH, EDDIE KIEFNER
 Advertising Staff

JOAN DOERNHOEFER, ANITA HAGER
 PAUL PALISCH, JAMES WEST
 Circulation

of the Senior Class





VOCATIONAL
AGRICULTURE
BUILDING

PERRYVILLE HIGH SCHOOL

"In the heart of Perry County,
Founded by old pioneers,
Stands the dear old Perryville High School
The source of all our cheers.
Of its school rooms, and its playgrounds,
Many cherished stories tell
Of the days when in their boyhood
They responded to its bell."

R. H. '23

LIBRARY

STUDY-WORK the first
step on our Stairway



RELAXATION

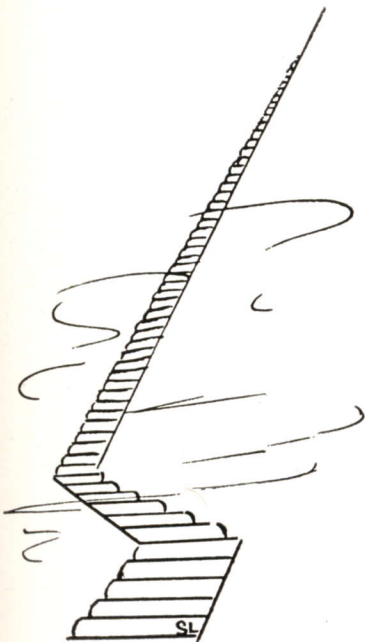
A pleasant meeting place
for friends between classes



MORNING STAR



*We introduce you to familiar faces at PHS
Who each day walk on our imaginary STAIRWAY TO THE STARS;
Our aims are high and we'll hold them so.
Courage and patience are with us too and
With faith unshaken we'll reach the top.*



TAKE THE STAIRS

FLIGHT I	Classes	15 — 38
FLIGHT II	Sports	39 — 50
FLIGHT III	Activities	51 — 72

GUIDING STARS



A. O. HILPERT
Superintendent

*B.S., S.E.Mo.S.C.; A.M., Mo. U.
Science*

A valuable superintendent, Mr. Hilpert capably executes the difficult tasks that are his as the administrator of our school.

ESTHER T. HUBER
Principal

*B.S., S.E.Mo.S.C.; A.M., Mo. U.
American History*

A sincere interest in youth makes Miss Huber an understanding and well-liked principal; a newcomer to PHS soon discovers her willingness to help everyone.



GUIDING STARS

It will be a bright future for you the youth of today if you are prepared to make it so. As the men and women of the future you must prepare to make the most of the future — of **your** future. Prepare for what? For what the future holds. That there are things of such worth that they cannot be rated in terms of dollars and cents; that the word SUCCESS depends upon the usefulness and effectiveness of your lives.

BOARD OF EDUCATION



Left to right: Wm. Lakenan, R. Smith, M. Abernathy, C. Hanquist, Treas., M. Fassold, Sec., A. Hilpert, C. McAtee, D. Prost.

GUIDING STARS



MRS. RALPH MORGAN

B.S., S.E.Mo.S.C.

Shorthand, Typing

Patiently preparing us for the future, she is an indispensable member of our faculty.

O. O. WHITE

B.S., Okla. A & M; A.M., Mo. U.

Vocational Agriculture

Food to feed the nation is the motive back of his competent teaching of vocational agriculture.



FOREST HUBER THILENIUS

B.S., S.E.Mo.S.C.

Home Economics

Her "girls" learn the fundamentals of homemaking under the patient understanding of Mrs. Thilenius.



EDWIN MECKER

B.S., Mo. U.

Bookkeeping, General Business

His training in real business life makes him well-suited to give a better knowledge of what to expect in business.



GUIDING STARS

CHARLES FATCHETT

B.S., S.E.Mo.S.C.

Physical Education, Coach

"Coach" trains our boys in physical fitness as well as good sportsmanship.



JOHNNIE SCHOLES

B.S., Murray College, Ky.

Social Studies

A loyal fan of PHS, she imparts her spirit of loyalty and citizenship to all of us.

ROBERT HEFLIN

A.B., Murray State College, Ky.

English

A walking "book of knowledge," Mr. Heflin passes on to his students his zest for living.



LEOLA SANDER

B.S., S.E.Mo.S.C.

English, Publications, Art

With smiles and a neat appearance, she brings to PHS a talent in art.

GUIDING STARS



WILLIAM MINTON

A.B., Union U., Jackson, Tenn.
English, History

His aim is to stress upon his pupils the importance of thorough preparation for future problems, enlivening it all with a wonderful disposition.

BETTY JO BRAME

B.S., S.E.Mo.S.C.
Mathematics

In her classes she displays a sense of humor that makes her well-liked.



ROBERT ADAMS

B.S., Washington U.
St. Louis Institute of Music
Band, Glee Club

Our good-natured music instructor is the link between us and the world of melody.



ALMA SMELSER

B.S., S.E.Mo.S.C.
Physical Education, Health

Miss Smelser's friendly dignity makes her a welcome addition to our teaching staff.



GUIDING STARS

CLEMENT FOX

B.S., St. Benedict's College, Kansas
Science

The scientific principles of the world are explained under his kind guidance.



JOSEPH BIRK

B.S., S.E.Mo.S.C.
Asst. Coach, Driver Education, Geography

The qualities of perserverance and calmness are displayed in him as he teaches his varied schedule.

MELVA FASSOLD

Secretary

Always ready to lend a helping hand, Melva quietly applies her skill to the work in the office.



PAT SUTTERER

Agriculture Instructor's Assistant

With a friendly attitude toward all, Pat neatly performs her duties.

YOU ARE MY LUCKY STAR



August Schoen and Homer Weith

AUGUST SCHOEN

Words cannot express the appreciation which Mr. Schoen deserves for keeping the school and its surroundings attractive.

HOMER WEITH

A welcome assistant to Mr. Schoen who fits right in a place ready-made for him.

THE STAIRWAY

TIME	8:30	9:30	10:30	11:30	12:50	1:50	2:50
	9:30	10:30	11:30	12:00	1:50	2:50	3:45
HILPERT	Office	Office	Office	Office	Office	Office	Office
HUBER	Office	Am. Hist.	Office	Tuba	Office	Office	Office
1							
THILENIUS*	Home Ec. I	Home Ec. I	Home Ec. I	Home Room		Home Ec. II	Home Ec. II
2							
FOX	Study Hall	Chem.	Biology		Gen. Sci.	Gen. Sci.	Gen. Sci.
3							
MINTON	Eng. I	Eng. I	Eng. I		Am. Hist.	Am. Hist.	Study Hall
4							
BIRK	Geog.	Driving	Driving		Ec. & Soc. (1)	Am. Govt. Mo. H. (1)	
Ag. B.							
ADAMS	Band	Band I	Mixed Ch. (5)		Fr. Glee (5)	Soph. Glee (5)	Beg. Band
Stage							
BRAME	Alg.	Gen. Math.	Adv. Alg. Trig.		Geom.	Alg.	Gen. Math.
6							
MECKER	Book.	Gen. Bus.	Book.		Study Hall	Study Hall	Gen. Bus.
7							
MORGAN	Typing	Typing			Sht. II	Sht. I	Typing
8							
SCHOLES	S. S. II	Citz.	Citz.		S. S. II	Citz.	S. S. II
10							
HEFLIN	Study Hall	Lit.	Eng. II		Eng. III	Lit.	Eng. III
11							
SANDER	Eng. II	Eng. II	Pub. (8)		Fr. Art 7	Soph. Art (7)	Art (7)
5							
SMELSER	Phys. (11)	P. E. M & W	P. E. M & W		P. E. M & W	P. E. M & W	Study Hall
Gym							
FATCHETT		P. E. T & Th	P. E. T & Th		P. E. T & Th	P. E. T & Th	Football
Gym							
WHITE	Voc. Ag. II T & TH	Voc. Ag. III M & W			Voc. Ag. I T & Th		
Ag. B.							



CLASSES

AIM HIGH AND HOLD YOUR AIM



Silently
 A star
 Blossomed forth
 In the sky, friendly and far.

Playfully
 Its beam
 Lingered close
 A guide to weary feet, it seems.

Steadily
 It shone
 Lighting a path
 For me, lost and alone.

Prayerfully
 A longing
 Arose in me
 To brighten another's way
 Just as did
 A little star
 When it shone forth
 A beam of love in a world of war.
 A. P., '53



ONE OF EACH

SENIOR

JUNIOR

SOPHOMORE

FRESHMAN



Abernathy
Brewer

Anderson
O. Buchheit

Baudendistel
S. Buchheit

Bohnert
Syl. Buchheit

Bredall
Coffelt

THANK YOUR LUCKY STARS

ABERNATHY, WILFRED

F.F.A.
Ambition: Dairy farmer
Destiny: Agricultural agent

ANDERSON, BETTY

Home Ec., Pep Squad
Ambition: Beautician
Destiny: Elevator girl

BAUDENDISTEL, VIOLA

Pep Squad, Home Ec., Pirate Puns
Ambition: Dancing instructor
Destiny: Lady of leisure

BOHNERT, ROSE MARY

G.A.A., Pep Squad, Home Ec., Senior Play
Ambition: Typist
Destiny: Medical Secretary

BREDALL, JERRY

Home Ec., Band, G.A.A., Pep Squad
Dramatic Club, Pirate Puns
Ambition: Laboratory technician
Destiny: Your guess

BREWER, JACKIE

Intramurals, Pirate Puns, Football, Senior Play
Ambition: To join Navy
Destiny: Double for James Cagney

BUCHHEIT, OSCAR

Pirate Puns
Ambition: Politician
Destiny: Income-tax collector

BUCHHEIT, SHIRLEY

Band, Home Ec.
Ambition: Manager of Tea Room
Destiny: Future Duncan Hines

BUCHHEIT, SYLVESTER

Class Reporter, Glee Club
Pirate Puns, Senior Play
Ambition: Business executive
Destiny: Floorwalker at Marshall Fields

COFFELT, CLARA MAE

Glee Club, G.A.A., Home Ec., Pep Squad, Librarian
Ambition: Prima Donna
Destiny: Disc Jockey

SENIORS

CORSE, HAROLD

Band

Ambition: To get there

Destiny: Motorcycle cop

COX, LOIS

Home Ec., Pirate Puns, Pep Squad

Ambition: Social Worker

Destiny: Child psychologist

DOERNHOEFER, JOAN

Staff, Home Ec., Band, Pep Squad,

G. A. A., Class President, Miss Missouri,

Tuba Queen Attendant, Dramatic Club

Football Prom Attendant

Ambition: Fashion Model

Destiny: Fashion Reporter

EDMOND, SHIRLEY

Staff Co.-Ed., Glee Club, Home Ec.,

Pep Squad, National Honor Society

Ambition: Secretary

Destiny: Taking orders from her husband

EGGERS, CALVIN

Staff Bus. Manager, Dramatic Club Pres.,

Glee Club, Pirate Puns, National Honor

Society, Intramurals, 2nd ranking student

Ambition: Electrical engineer

Destiny: Changing light bulbs for the city

FADLER, VELMA

Home Ec.

Ambition: Ice skater

Destiny: Home-maker

FASSOLD, KATHRYN

Staff, Home Ec., Pep Squad, Senior

Play

Ambition: Airline hostess

Destiny: Ticket seller at airport

FEISTE, VERNOLD

F.F.A., Intramurals, 4th ranking student

Ambition: Farmer

Destiny: Baseball Commissioner

FINGER, WALTER

F.F.A.

Ambition: Business

Destiny: Shoe-shine stand

FISCHER, MELBA

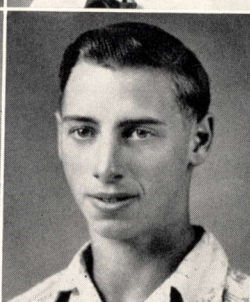
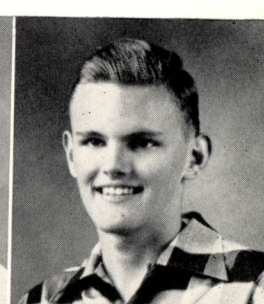
Class Secretary, Pep Squad, Home Ec.,

Glee Club, Librarian, D.A.R. Representative,

National Honor Society, Senior Play

Ambition: Singer

Destiny: Star at the Municipal Opera



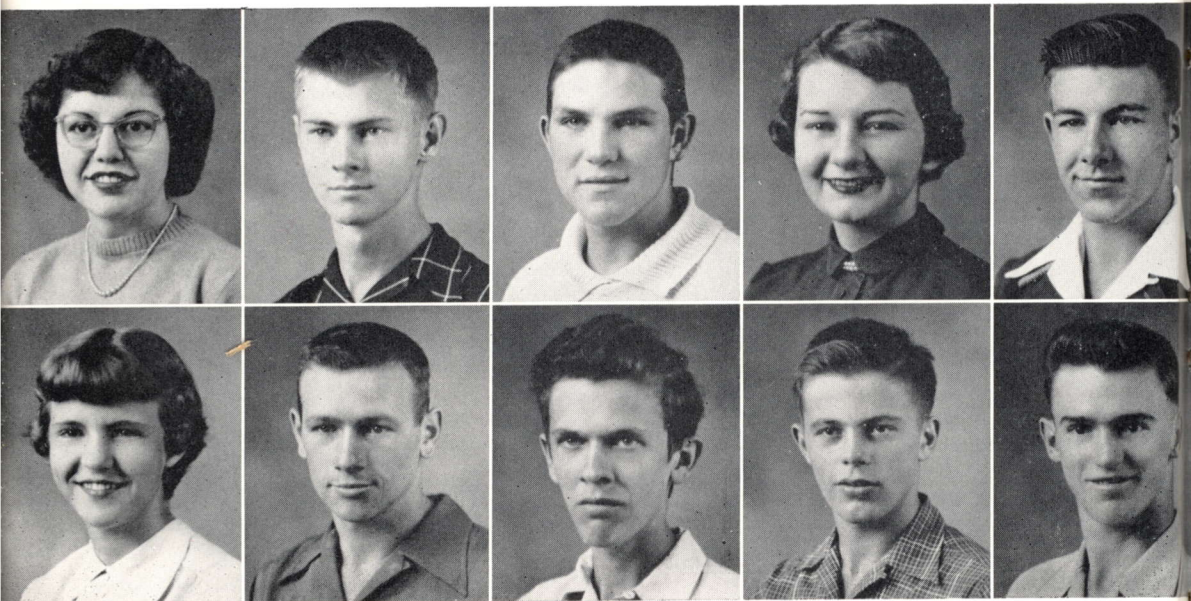
Corse
Fader

Cox
Fassold

Doernhoefer
Feiste

Edmond
Finger

Eggers
Fischer



Graff
Hilderbrand

Grantham
Hoehn

Haertling
Kassel

Hager
Kiefner

Henderson
Koenig

THANK YOUR LUCKY STARS

GRAFF, ESTHER

Home Ec., Pep Squad, National Honor Society
Ambition: A "Girl Friday"
Destiny: Psycho-analyst

GRANTHAM, DELBERT

Intramurals, Senior Play
Ambition: Atomic Scientist
Destiny: C.P.A.

HAERTLING, WESLEY

Ambition: Truck Driver
Destiny: Car Washer

HAGER, ANITA

Staff, Band, G.A.A., Pep Squad,
Barnwarming Attendant,
Dramatic Club, Home Ec.
Ambition: Actress
Destiny: Editor of a society column

HENDERSON, LAWRENCE

Football
Ambition: Surgeon
Destiny: Butcher

HILDERBRAND, BELINDA

Band, G.A.A. Sec'y., Home Ec.,
Barnwarming Queen, Pep Squad,
Football Prom Attendant
Ambition: Secretary
Destiny: Surprise

HOEHN, HAROLD

F.F.A., Football, Basketball
Ambition: Auto Racer
Destiny: Grease monkey at Intersection

KASSEL, WERNOLD

F.F.A.
Ambition: Artist
Destiny: Cartoonist

KIEFNER, EDDIE

Staff, Senior Play, Football,
Basketball, Dramatic Club Vice Pres.,
Class Vice Pres., National Honor Society
Ambition: Civil Engineer
Destiny: Career Diplomat

KOENIG, MARVIN

Basketball
Ambition: Big League Pitcher
Destiny: Ticket Collector at Sportsman's Park

SENIORS

KRAHN, HELEN

Home Ec., Glee Club, Pep Squad
Ambition: To travel
Destiny: Cook's tour conductor

KURRE, SHIRLEY

Home Ec., Band, Pep Squad
Ambition: Telephone operator
Destiny: Designer

LAKENAN, MARGARET

Staff, Home Ec., G.A.A., Pep Squad
Secretary, Dramatic Club Secretary, 3rd
ranking student, Band, National Honor
Society, Senior Play
Ambition: Degree in Home Ec.
Destiny: T.V. Home Ec. demonstrator

LEIMBACH, DARLENE

Staff, Home Ec., Glee Club
Ambition: Nurse
Destiny: Nurse

LINTNER, EARL

F.F.A.
Ambition: Living
Destiny: Doing the same

LOBERG, SHIRLEY

Staff, G.A.A., Dramatic Club, Cheerleader,
National Honor Society, Barnwarming
attendant, Football Queen, Home Ec.,
Senior Play
Ambition: Artist
Destiny: Sign painter

LOHMANN, LEONARD

F.F.A., Intramurals
Ambition: Big land owner
Destiny: Sharecropper

LORENZ, RUBY

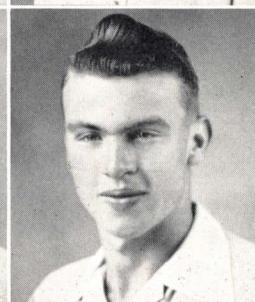
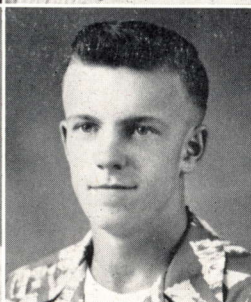
Home Ec., Band, Pep Squad, Glee Club
Ambition: File clerk
Destiny: Milliner

LOWES, PAUL

F.F.A.
Ambition: Small job with big pay
Destiny: Truck driver

MAHNKEN, LEROY

Pirate Puns, Intramurals, American
Legion Oratorical Representative, 5th
ranking student
Ambition: Pharmacist
Destiny: Soda jerk



Krahn
Loberg

Kurre
Lohmann

Lakenan
Lorenz

Leimbach
Lowes

Lintner
Mahnken



Manche
Meyer

Martens
Milliano

Martin
Modde

Mathews
Ochs

Mehner
Oster

THANK YOUR LUCKY STARS

MANCHE, YVONNE
Librarian, Home Ec., Pirate Puns,
Senior Play
Ambition: Seamstress
Destiny: Madame Yvonne's Originals Inc.

MARTENS, DORIS
Staff, Librarian, Home Ec., Band,
Dramatic Club, Pep Squad, G.A.A.
Ambition: Stenographer
Destiny: Dental assistant

MARTIN, EARL
Football, F.F.A., Intramurals
Ambition: Manager of a poultry farm
Destiny: Egg-gatherer

MATHEWS, CHARLES
Pirate Puns
Ambition: Comptometer operator
Destiny: Office boy

MEHNER, ROSEMARY
G.A.A., Pep Squad, Librarian,
Glee Club
Ambition: Librarian
Destiny: News commentator

MEYER, LOUIS
Glee Club, Band
Ambition: Sailor
Destiny: Deck-swabber

MILLIANO, JACKIE
F.F.A., Intramurals
Ambition: Crooner
Destiny: Square dance caller

MODDE, SHIRLEY
Staff, G.A.A., Home Ec., Band,
Pep Squad, Dramatic Club, National Honor
Society
Ambition: Florence Nightingale of 1958
Destiny: Mother of the Year 1985

OCHS, EARLENE
Staff, G.A.A., President, Dramatic Club,
Band, Home Ec., Pep Squad,
Football Prom Attendant
Ambition: Receptionist
Destiny: Guide at the United Nations

OSTER, LOIS
Band, G.A.A., Home Ec., Pep Squad
Ambition: Office girl
Destiny: Florist's assistant

SENIORS

PALISCH, PAUL

Staff, Glee Club
Ambition: Big game hunter
Destiny: Comedian

PANNIER, JULIAN

F.F.A.
Ambition: Aviator
Destiny: Model-plane operator

PRICE, ANNA

Staff Ed., Librarian, Class Treasurer,
Pep Squad, Home Ec., 1st ranking student,
National Honor Society
Ambition: Missionary
Destiny: Ditto

PROST, CARL

Band
Ambition: Harry James' replacement
Destiny: Bugler (for Uncle Sam)

PROST, NINA

Staff, Pep Squad, Home Ec.
Ambition: P.H.S. Secretary
Destiny: Private secretary

RANDOLPH, SHIRLEY

Pep Squad, G.A.A., Home Ec., Senior
Play
Ambition: Accountant
Destiny: Success

RAUH, MELVIN

Intramurals, F.F.A.
Ambition: Farmer
Destiny: Veterinarian

RINEY, ERMA

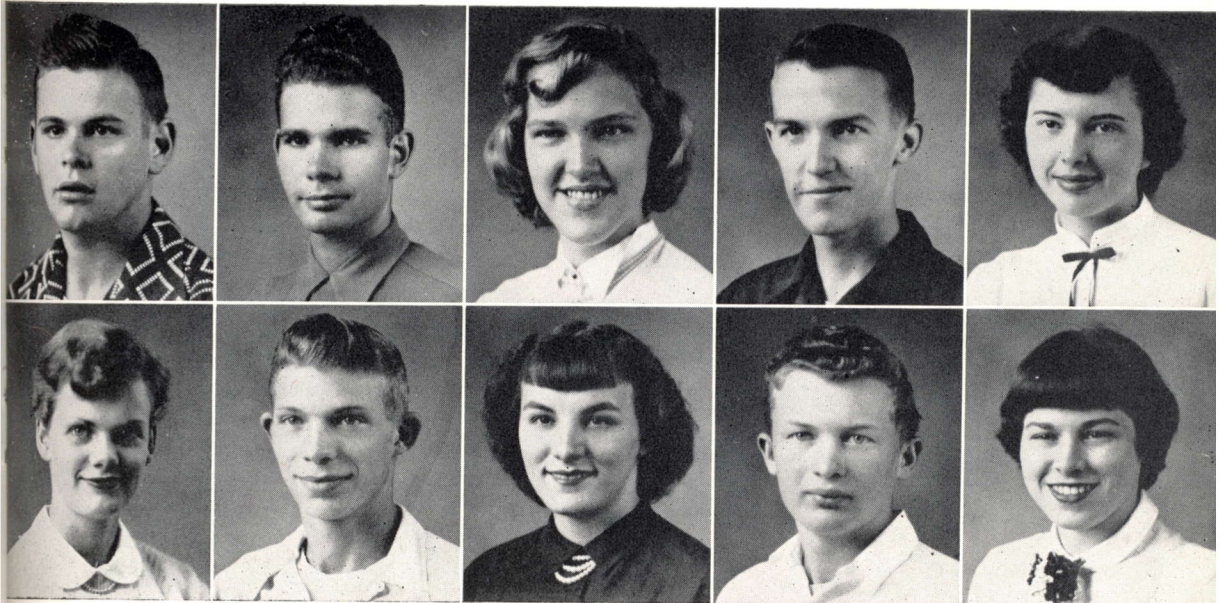
Home Ec., Pep Squad
Ambition: Typist
Destiny: Wedding bells replace typing bells

ROTH, ROGER

Staff, Intramurals
Ambition: Automobile mechanic
Destiny: Traffic cop on a one-way street

RUDISAILE, FAYE

Home Ec., Pep Squad
Ambition: To be successful
Destiny: Stamp collector



Palisch
Randolph

Pannier
Rauh

Price
Riney

C. Prost
Roth

N. Prost
Rudisaile



D. Ruesler
Schrumpf

V. Ruesler
Schuessler

Sandler
C. Steffens

Schlimpert
E. Steffens

Schremp
R. Steffens

THANK YOUR LUCKY STARS

RUESLER, DOLORES

Tuba Queen, Band, Home Ec., Pep Squad
Ambition: Beauty Operator
Destiny: Giving Toni to twins

RUESLER, VIRGIE

Pep Squad, Home Ec.
Ambition: Airline hostess
Destiny: Elevator operator

SANDLER, SHIRLEY

Pep Squad, Home Ec., Pirate Puns,
Senior Play
Ambition: Radio Announcer
Destiny: Radio listener

SCHLIMPERT, MARIE

Staff, Home Ec., Glee Club
Ambition: College professor
Destiny: Kindergarten teacher

SCHREMP, BETTY

Pep Squad, Home Ec., G.A.A.
Ambition: Join the Army Nurse Corps
Destiny: Private in the WAF'S

SCHRUMPF, DALE

Staff, Football Mgr., Intramurals, National
Honor Society
Ambition: Engineer
Destiny: Sports writer

SCHUESSLER, MARY

G.A.A., Pep Squad, Home Ec.
Ambition: To wear orange blossoms
Destiny: Selling petunias at Roziers

STEFFENS, CLEO

Intramurals
Ambition: Author and philosopher
Destiny: Teacher

STEFFENS, ELAINE

Home Ec., Band, Pep Squad, Glee Club,
National Honor Society
Ambition: Marry a Marine
Destiny: Medical Missionary

STEFFENS, RUBY

Staff, Pep Squad President, Band,
Home Ec. President, G.A.A.
Ambition: Spending her days at the Ritz
Destiny: Happily married to a guy called Fritz

SENIORS

SUTTERER, GERALD

F.F.A., Intramurals, Senior Play
Ambition: Auto manufacturer
Destiny: Daredevil driver

TRAPP, DOROTHY

Home Ec., Band, Pep Squad, G.A.A.
 Football Prom Attendant
Ambition: Powers Model
Destiny: Emcee

WAHLERS, BETTY

Band, G.A.A., Librarian, Home Ec.,
 Cheerleader, Senior Play
Ambition: Marry a man in the dough
Destiny: Baker's doughnut taster

WEINRICH, MARIE

Home Ec., Pep Squad, G.A.A.
Ambition: Typist
Destiny: Salesgirl

WERNER, WILFRED

F.F.A.
Ambition: Sculptor
Destiny: Shoe repairman

WEST, JAMES

Staff
Ambition: Big ranch owner
Destiny: Cowpuncher

WILSON, NORMA

Pep Squad, Librarian, Home Ec.,
 Pirate Puns
Ambition: Nightly story teller for 3 or 4
Destiny: Moderator of Children's Hour

WINKLER, LEON

Intramurals
Ambition: A job with no work
Destiny: Ditch-digger



Sutterer
 Werner

Trapp
 West

Wahlers
 Wilson

Weinrich
 Winkler



STEADFAST as the STARS

ABERNATHY, LESTER
Listens Attentively

ABERNATHY, PATSY
Band, G.A.A., Pep Squad
Peppy Athlete

AMBERGER, WILLIAM
Witty Amateur

BARBER, JO ANN
Band, G.A.A., Pep Squad
Jovial Brunette

BARBER, CAROLYN
Pep Squad, Dramatic Club
Celestial Bouquet

BARKS, MARGIE
(Dropped)
Married Blissfully

BIEHLE, KENNETH
Band, Dramatic Club
Keen Brain

BIERK, COZY
Band, G.A.A., Cheerleader, Dramatic
Club
Carefree Butterfly

BOHNERT, CLYDE
Cheerful Bystander

BOLLINGER, NADINE
(Dropped)
Naive Blackeyed-Susan

BOXDORFER, ROY
Football
Real Boxer

BRANDES, IVALEA
Pep Squad
Industrious Bookworm

BRICKHAUS, PAUL
F.F.A.
Play Ball

BROWN, ALEEN
Glee Club
Accent Blue

BRUENE, LUCILLE
Pep Squad
Lively Blossom

BURROUGHS, DOLORES
Glee Club, Home Economics
Demure Blonde

CATTOOR, SHIRLEY
Glee Club
Sincere Courtesy

CHERRY, WILLIAM
Football, Dramatic Club, Glee Club
Willing Companion

JUNIORS

COFFELT, ALMA
G.A.A., Glee Club
Always Cheerful

DEPAUW, CAROL
Glee Club, Pep Squad, G.A.A.
Certainly Dainty

DREYER, ALFRED
F.F.A.
Anything Doin'?

ENKE, DOROTHY
G.A.A., Glee Club, Home Economics
Dependably Efficient

ESSELMAN, LEONARD
(Dropped)
Liked Everyone

EUGAS, MARY
(Dropped)
Moved Elsewhere

FARRAR, ALENE
Home Economics, Glee Club
Anticipates Future

FAVIER, ROBERT
Football
Reliable Friend

FEISTE, DOROTHY
G.A.A., Pep Squad
Distinctly Fortunate

FIEHLER, LLOYD
Loyal Fellow

FIEHLER, MARVIN
F.F.A., Band
Marches Forward

FISCHER, CAROL
G.A.A., Band, Home Economics
Creates Fashions

FISCHER, MELVIN
Football
More Fun

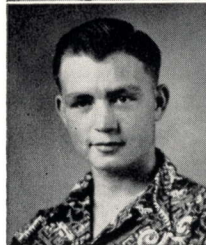
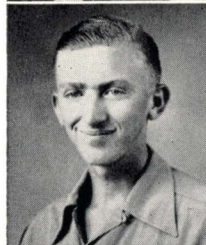
FRANKE, GEORGE
Band, Pep Squad, Intramurals
National Honor Society
Genial Fisherman

FRANKLIN, PEGGY
Glee Club, Pep Squad
Pleasingly Fair

FRITSCH, PALMER
F.F.A., Intramurals
Personal Force

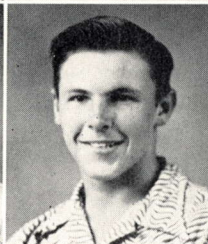
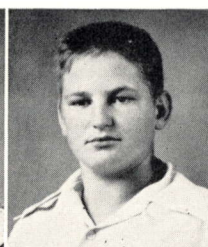
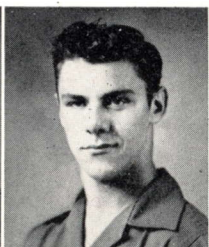
GEILE, HAROLD
Band, Intramurals
Hearty Guy

GIBBAR, BEULAH
Glee Club, Pep Squad
Blissful Greeting



Coffelt
Dreyer
Esselman

DePauw
Enke
Eugas



Farrar
M. Fischer

Favier
Franke

Fieste
Franklin

L. Fiehler
Fritsch

M. Fiehler
Geile

C. Fischer
Gibbar



STEADFAST as the STARS

GRANTHAM, SHIRLEY
G.A.A., Pep Squad, Librarian
Sweet Gal

HAND, GEORGE
Basketball, F.F.A., National Honor
Society
Gay Harbinger

HERRING, LOUIS
Band, F.F.A.
Lending Hand

HINKLE, SHIRLEY
Band, Pep Squad, Dramatic Club
Sweet Heart

HOEHN, DONALD
Football
Daring Hunter

HOFFMAN, ROBERT
Football, Basketball, Class Pres.
Right Handy

HOWARD, VERNA
Band, G.A.A., Pep Squad, Dramatic
Club
Very Happy

HUBER, DOROTHY
Band, National Honor Society
Determined Helper

HUDSON, MELVIN
Band, Dramatic Club, Football,
National Honor Society
Melody Haunted

JOHNSON, MARIE
G.A.A., Glee Club
Much Joy

KOENIG, GERALDINE
1st. V.F.W. Essay
Generated Knowledge

KRANAWETTER, ERWIN
Band, Intramurals
Energetic Kid

KRANAWETTER, MATHILDA
Band, G.A.A.
Munches Knick-knacks

LANE, GENE
(Not on Picture)
Gallant Lad

LAYTON, JERRY
Joyous Laughter

LEIMBACH, ALVIN
Amiable Leader

LOHMANN, DORIS
Band, G.A.A., Pep Squad
Delightful Lass

LONG, CHARLES
Glee Club
Cheerily "Loafs"

LORENZ, EARL
Glee Club
Ever Lucky

JUNIORS

MABUCE, EDDIE
Football, Basketball Manager
Energetic Meanderer

MCATEE, DONALD
Dramatic Club, Glee Club
Distant Melody

MCATEE, ROBERT
Football, Basketball, Glee
Club, Intramurals
Romeo Meditates

MCCAULEY, GARY
(Dropped)
Great Mover

MIESNER, EDGAR
F.F.A., Intramurals
Efficient Memory

MODDE, LELA
G.A.A., Glee Club, Pep Squad
Leisurely Motivated

MUELLER, DONALD
Band, Football
Determined Man

MYERS, RUTH
Cheerleader
Radiates Moonlight

OEHLERT, PAULA
Glee Club, G.A.A., Home
Economics
Politely Outstanding

PECAUT, JUERLINE
G.A.A., Pep Squad
Jolly Package

PETERMAN, LULA BELLE
Lovely Picture

POPP, EDWARD
F.F.A.
Excuse Please

POPP, ROBERT
Basketball, F.F.A.
Releases Pleasure

QUINTANA, ALMA
G.A.A., Pep Squad, Dramatic
Club
Animates Queenliness

REISS, SHIRLEY
Band, G.A.A., Pep Squad
Shy Remembrance

ROTH, ALLEN
Football
All Right

SADLER, ROBERT
F.F.A.
Really Sure

SANDLER, MERLIN
Football
Many Surprises



Mabuce
R. McAtee
Miesner

D. McAtee
McCauley
Modde



Mueller
R. Popp

Myers
Quintana

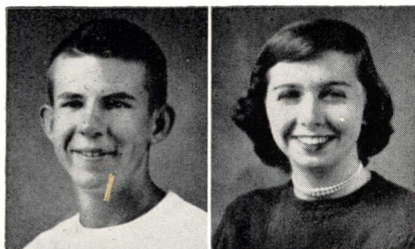
Oehlert
Reiss

Pecaut
Roth

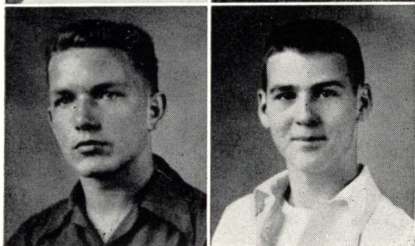
Peterman
Sadler

E. Popp
Sandler

STEADFAST as the STARS



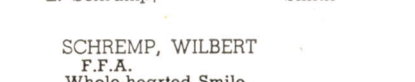
STATLER, RICHARD
F.F.A.
Rather Sociable



THAYER, JANET
Band, Pep Squad, V. Pres. of
Class
Jovial Teenager



THAYER, JOAN
Band, Pep Squad
Jolly Too



Schremp
L. Schrupf

J. Schrupf
Smith

SCHREMP, WILBERT
F.F.A.
Whole-hearted Smile

SCHRUMPF, JEAN
Band, G.A.A., Pep Squad
Joyous Sport

SCHRUMPF, LEMAN
Football, Basketball
Loyal Student

SMITH, PAUL
Football, Basketball, Class Sec.-
Treas.
Perfect Sportsman

THOMPSON, BOBBY
Football, Basketball, F.F.A.,
Pirate Puns
Boysish Twinkle

THOMPSON, ROBERT
Red Topped

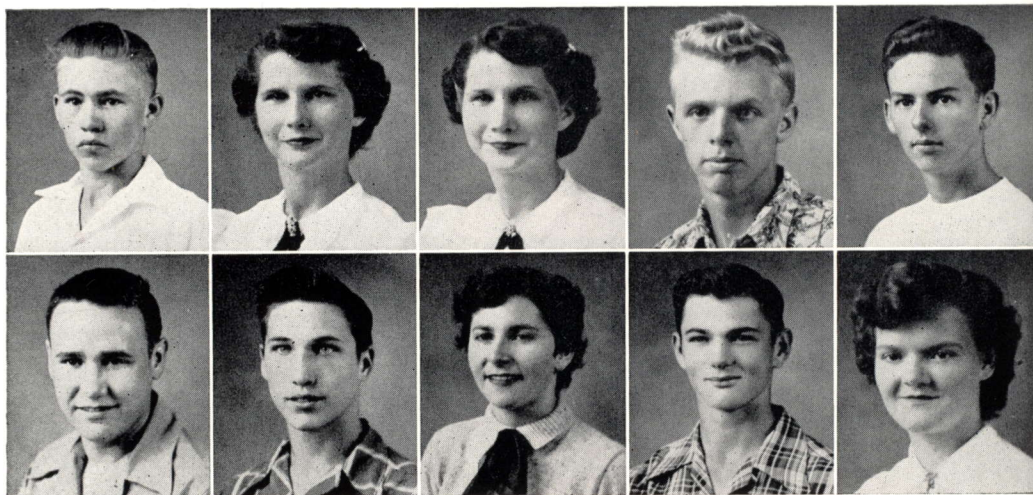
TIPP, CLYDE
Football
Carefree Traveler

TORBERT, CLARENCE
(Dropped)
Cupid's Target

WEIBRECHT, WILMA
Band, Pep Squad
Willing Worker

WILLS, HERMAN
Football
Hidden Wit

WINTER, SHIRLEY
Band, Pep Squad, G.A.A.,
Librarian
Sunny Weather



Statler
Tipp

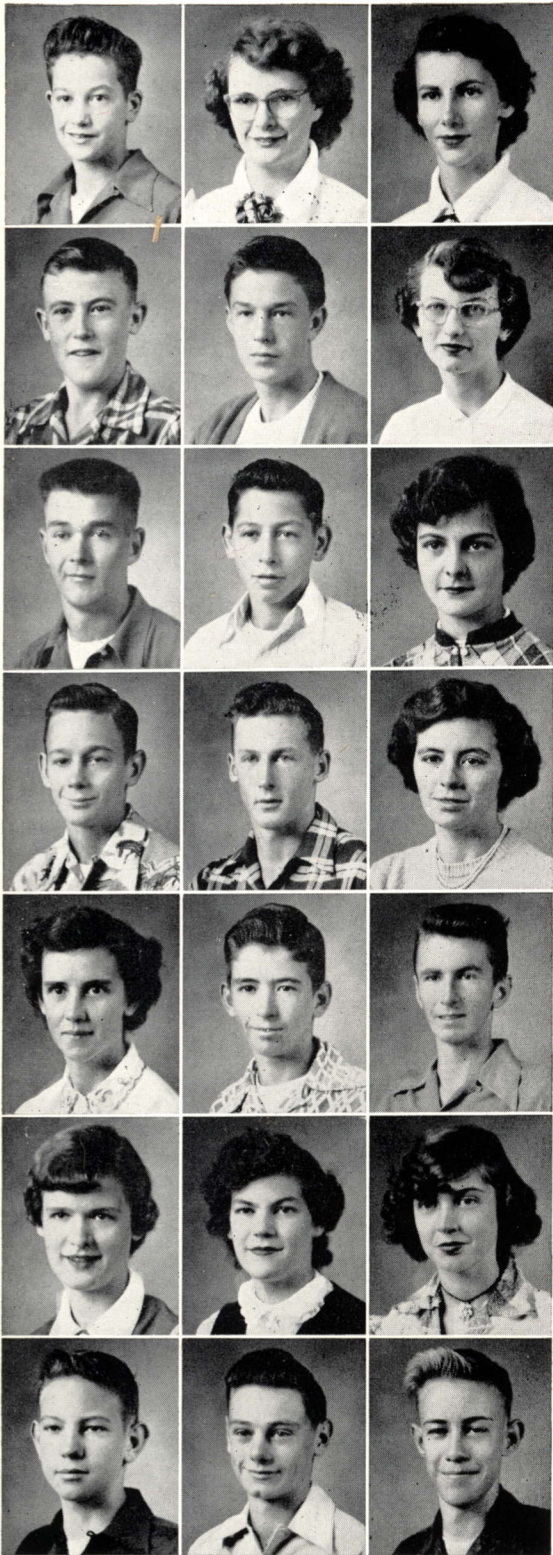
Janet Thayer
Torbert

Joan Thayer
Weibrecht

B. Thompson
Wills

R. Thompson
Winter

SOPHOMORES



ABERNATHY, DONALD
Football, Basketball

ALLEN, PATRICIA
Pep Squad

BARKS, BETTY
Home Ec., Glee Club Pep Squad

BERGMAN, DONALD
F.F.A., Glee Club

BERT, LARRY
Class Vice-Pres., Football, Glee Club

BLACK, JOAN
G.A.A., Pep Squad, Home Ec.
Dramatic Club

BODENSCHATZ, ALAN
F.F.A., Football

BRAUN, SYLVESTER
F.F.A., Glee Club

BREWER, DORIS
Class Pres., Dramatic Club
Pep Squad, G.A.A., Glee Club
Home Ec.

BROWN, FREDDIE
F.F.A., Glee Club
Intramurals

CONRAD, LYNN
Football, Glee Club

DETJEN, ALICE
Home Ec., Glee Club

DETJEN, LOIS
Home Ec., Glee Club

DETJEN, MARVIN
F.F.A., Glee Club

DE ROE, TOMMY
Basketball, Football

DEVENYNS, CAROL
G.A.A., Pep Squad, Home Ec.
Librarian, Band

DE WILDE, SHELBY
Home Ec., Glee Club

DUVALL, DELORES
Band, Pep Squad, Home Ec.

EDMOND, RAY
Glee Club

ELDER, DENZEL

FADLER, JOHN
Band, Basketball, Intramurals

HITCH YOUR WAGON TO A STAR

FARRAR, RICHARD

(Not on picture)

F.F.A., Glee Club

FOSTER, DORIS

Home Ec., Glee Club

FRANKLIN, LORETTA

Glee Club, Home Ec., Librarian

FRIESE, PAUL

F.F.A., Glee Club

GEILE, LAWRENCE

F.F.A., Glee Club

GEILE, ROBERT

Football, Glee Club

GRAFF, VERNA

Pep Squad, G.A.A., Glee Club

Home Ec., Librarian

GUEMMER, DAVID

Band

HACKER, WILBERT

HADLER, WILLARD

F.F.A., Glee Club

HAHN, LEOLA

Glee Club, Home Ec., G.A.A.

Pep Squad

HEINBOKEL, CAROLE

Band, Pep Squad, Home Ec.

HENDERSON, CAROL

Pep Squad, Glee Club, G.A.A.,

Home Ec.

HOPFER, MARLENE

Band, G.A.A., Home Ec., Pep Squad

HOTOP, RITA

Home Ec., Dramatic Club,

Pep Squad, Band

HOUSE, VIRDA

Home Ec., Band, G.A.A., Pep Squad

JOY, ELLA

Home Ec., Glee Club

KAEMPFE, LLOYD

Football, Glee Club, Intramurals

KASSEL, DONALD

Intramural

KASSEL, LOIS

Home Ec., Band

KASSEL, NANCY

Band, Pep Squad, G.A.A.,

Home Ec.

KESTER, BOBBY

F.F.A., Glee Club



SOPHOMORES

LA ROSE, RODNEY

LAYTON, VIRGINIA
Band, Home Ec., G.A.A., Pep Squad

LEE, LLOYD
F.F.A., Glee Club

LINTNER, DALE

LOEBS, HERBERT
Band

LUKEFAHR, EDNA
Pep Squad, G.A.A., Home Ec.,
Glee Club

MAHNKEN, MELVA
Pep Squad, Glee Club, Home Ec.

MARTENS, CAROL
Band, Home Ec., Librarian, G.A.A.,
Pep Squad, Dramatic Club

MIESNER, MERLE
Band, Majorette, Pep Squad, G.A.A.,
Home Ec.

MIESNER, RUTH
Glee Club, Home Ec.

MODDE, JOAN
Band, Home Ec., G.A.A., Pep Squad

MONEYHUN, DONALD
F.F.A., Glee Club, Football

MOONIER, JAMES

MORRIS, BETTY
Home Ec., Glee Club

MUENCH, LE ROY
Band

NORRINGTON, DELBERT
Football, Basketball, Intramurals,
Glee Club

OHLERT, RUDOLPH
Band

OSWALD, ALVIN
F.F.A., Glee Club

PREVALLET, DAVID
Band, Intramurals

PORTER, GWEN
Band, G.A.A., Pep Squad, Home Ec.

OTTO, NELDA
Glee Club, Home Ec.

HITCH YOUR WAGON TO A STAR

PREVALLET, HUBERT
F.F.A., Glee Club

PREVALLET, PATSY
Band, G.A.A., Pep Squad
Home Ec., Class Reporter

RENAUD, ARLY
Pep Squad, Glee Club, Home Ec.

ROBINSON, GLEN
F.F.A., Glee Club

ROTH, NORA
G.A.A., Pep Squad, Glee Club,
Home Ec.

RUESLER, CLEMEN
Football

RUESLER, FRANCES
(Dropped)
Barnwarmin' Attendant

RUESLER, KERMIT
Dramatic Club, Football, Intramurals

SCHREMP, SHIRLEY
(Dropped)
Band, G.A.A., Pep Squad, Home Ec.

SCHUESSLER, VERA
(Not on Picture)
G.A.A., Glee Club, Home Ec.
1st. in American Legion Essay Contest

SCHULTE, JOHN
Football, Basketball

SCHWEIN, JAMES
F.F.A., Glee Club

SEWING, WANDA
Home Ec., Glee Club, Pep Squad

STEFFENS, EUGENE
Glee Club

STEFFENS, EUNICE
Home Ec., Band, Pep Squad

STEINBECKER, NEIL
Football, Glee Club

STUEVE, CHARLES
F.F.A., Glee Club, Intramurals

TANZ, DOLORES
Home Ec., Glee Club

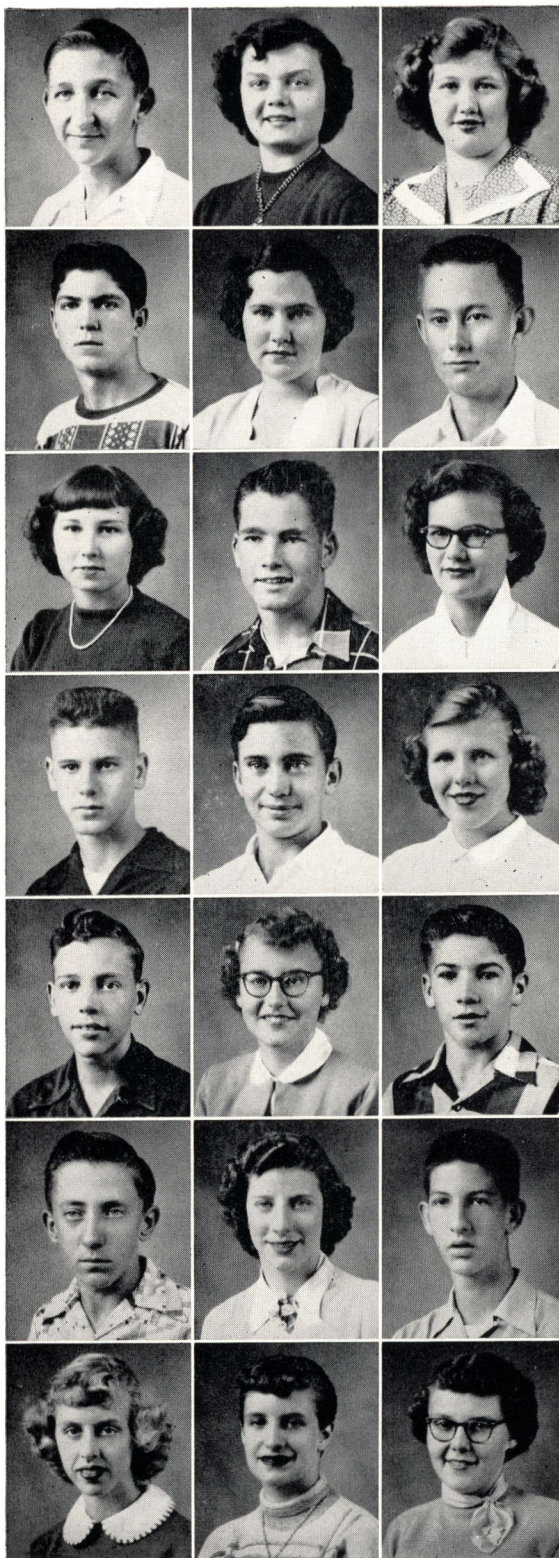
THILENIUS, HOWARD ED
(Transferred)
Football, Basketball, Glee Club

THOMPSON, RUTH
Band

THOMS, DONALD
(Not on Picture)
Sophomore Citizen, Glee Club

TUCKER, WANDA
Cheerleader, G.A.A.

VOGEL, SHIRLEY
Home Ec., Glee Club
Pep Squad, G.A.A.





SOPHOMORES

WAHLERS, RUBY
Band, Pep Squad, Home Ec.

WEINRICH, ALFRED
Football, Basketball, Glee Club

SENIORS

Colors: Blue and ivory
Flower: Lily of the valley
Motto: Aim high and hold your aim

Party: Stairway to the Stars —
January 28

Play: April 24 — A Date with
Judy

Sponsors: Mrs. Thilenius, Mr.
Heflin, Mr. Mecker

JUNIOR

Party: Christmas — December 22
First prize in Halloween Window
Painting Contest

Sponsors: Mrs. Morgan, Miss
Smelser, Mr. Birk

SOPHOMORE

Party: Snowball Festival — De-
cember 11

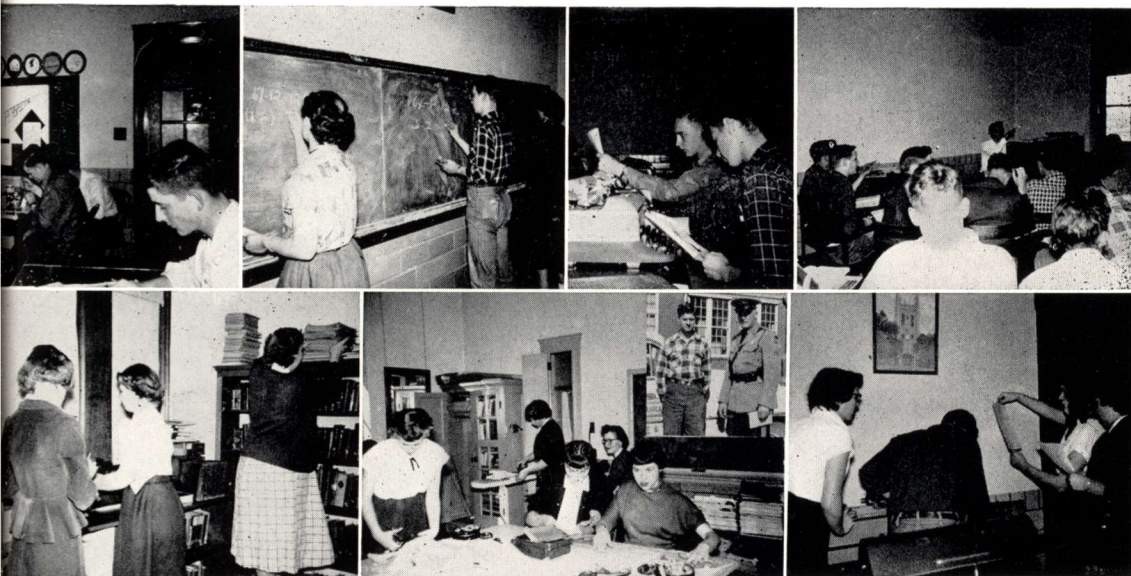
First prize in Halloween Window
Painting Contest

Sponsors: Miss Scholes,
Miss Sander, Mr. Fox

FRESHMAN

Party: Thanksgiving — Novem-
ber 25

Sponsors: Miss Brame,
Mr. Minton, Mr. Fatchett



We meet Art, Math, Typing, Glee Club, Library, Home Ec., Drivers Education,
and Publications on our way



ABERNATHY, VIOLA
Glee Club

ALKEMEYER, LESLIE
Glee Club, F.F.A.

ALLEN, LOIS
Glee Club

AMBERGER, ALICE
Glee Club

BACHMANN, ALDINE
Band

BARBER, GEORGIA
Band, G.A.A., Pep Squad,
Class Treasurer

BARBER, LARRY
F.F.A.

BAUWENS, WAYNE
Band

BIRI, RICHARD
Intramurals

BOESCH, DONALD
F.F.A.

BOLLINGER, NORMA
Glee Club, Pep Squad

BROWN, MELVIN
Glee Club

BROWN, MYRNA
Glee Club, Pep Squad

BRUECKNER, HOMER
(Not on Picture)
F.F.A.

BUCHHEIT, DANIEL

CASHION, JOYCE
Glee Club, Pep Squad,
Class Reporter

CATTOOR, EULEINE
Glee Club

CISSEL, GLENDA
Glee Club

CISELL, RICHARD
F.F.A., Glee Club

COFFELT, ROBERT
Glee Club, Intramurals

COLIN, JANET
Glee Club

COOMER, PAULINE
(Dropped)

CRAWFORD, ELBERT
(Dropped)

DETJEN, NORMA
Glee Club

DE WILDE, RITA
Glee Club

DIETRICH, STELLA
Pep Squad, G.A.A.

TWINKLE, TWINKLE, LITTLE STARS

FRESHMEN

FARRAR, BEULAH
Glee Club, Pep Squad

FASSEL, ROY
Football, Basketball,
Intramurals, Vice Pres. of
class

FEISTE, ELMER
Band

FINCH, CHARLES
Glee Club, F.F.A.

FINGER, WAYNE
F.F.A., Band

FLUEGEL, MARY DELL
Glee Club, G.A.A.

FORNKAHL, VIRGINIA
Band, Pep Squad

FRANKLIN, LINDA
Pep Squad

FRITSCH, LLOYD
Band, F.F.A.

FUNK, BILL

FUNKE, JANICE

FUYTINCK, EDMOND
Glee Club

GERRINGER, VELDA
Band, G.A.A.,
Pep Squad

GRINDSTAFF, JAMES
Glee Club
HAGER, DELORES
Glee Club

HARTLE, BARBARA
Glee Club

HAYES, JACKIE
(Not on Picture)
F.F.A.

HAYES, JIMMIE
(Not on Picture)
F.F.A.

HECK, VERNON
Glee Club

HEIMBECKER, DOROTHY
Pep Squad, Glee Club,
G.A.A.

HENDERSON, ROY
Glee Club, Intramurals,
F.F.A.

HERRON, FAYE
(Transferred)

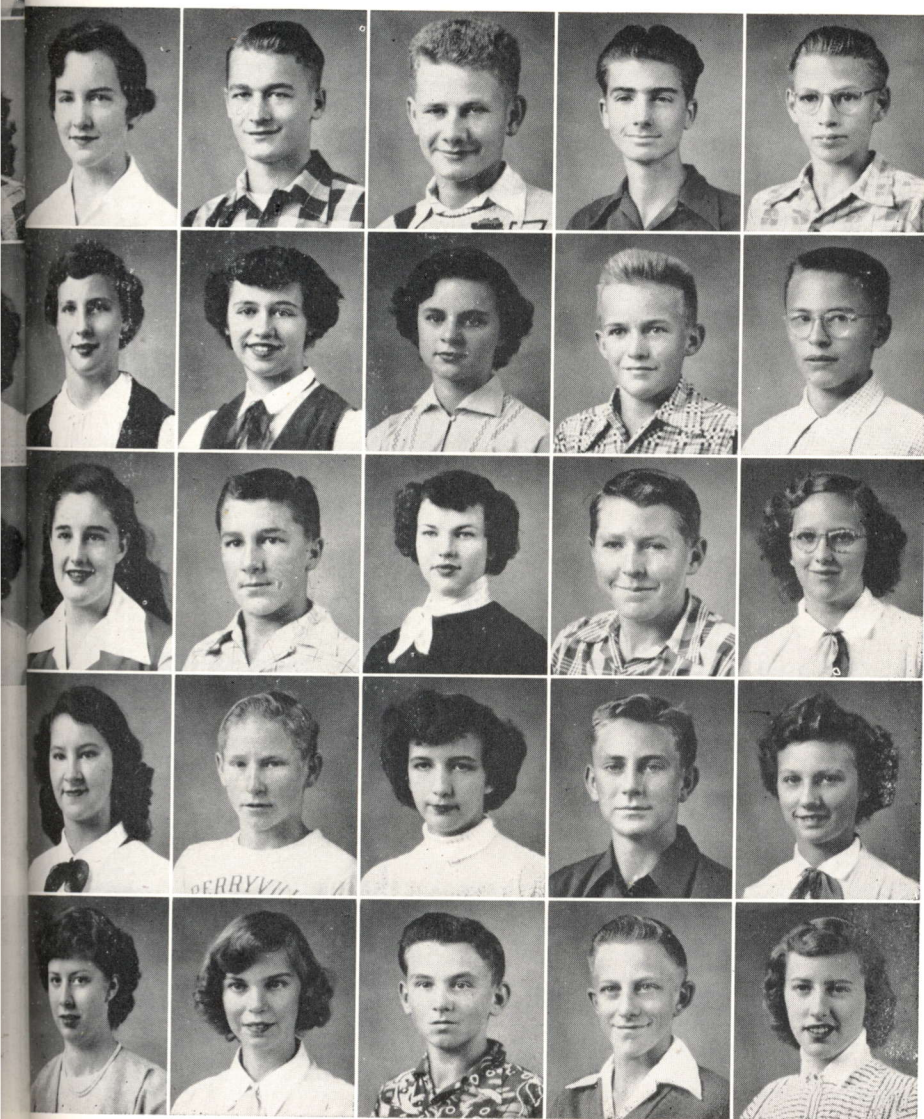
HERSCHBACH, KATHLEEN
Pep Squad, Glee Club,
G.A.A.

HOEHN, ELIZABETH
Glee Club, Pep Squad,
G.A.A.

HOEHN, NORMAN
F.F.A.

HOEHN, WILBERT
F.F.A.

HOFFSTETTER, JUDITH
Glee Club, Band, G.A.A.



HOLMBO, JEANETTE
Glee Club

HOPFER, GEORGE
Football

HOTOP, EUGENE
F.F.A., Glee Club

HUDSON, HELEN
(Dropped)

HUDSON, JUANITA
Glee Club

HUDSON, LARRY
F.F.A.

HUDSON, ROSALIE
Pep Squad, Band,
G.A.A.

JOHNSON, DANIEL
Glee Club, F.F.A.

KAEMPFE, DELVIN
Band, F.F.A.

KASSEL, ELLEN
Band, Pep Squad

KATT, VIOLA

KAYSER, ROBERT
F.F.A., Glee Club

KESTER, DALE
Glee Club, F.F.A.

KIEFER, AGNES
Pep Squad

KIEFNER, ANN
Band, Glee Club, Dramatic
Club, G.A.A.

KOENIG, DORIS
Band

KOENIG, NORMAN
Band, F.F.A.

KOENIG, RUBY
Band, Pep Squad, G.A.A.

KRAMER, DOLORES
Glee Club, Pep Squad, G.A.A.

LANG, HAROLD
Intramurals

LEONARD, FAYO
Glee Club, Pep Squad

LONG, GLENNON
F.F.A., Glee Club

LUEDERS, LOWELL
Intramurals, Band

MC ATEE, MILDRED
Band, Pep Squad, Dramatic
Club, G.A.A.

MANNING, LINUS
F.F.A.

TWINKLE, TWINKLE, LITTLE STARS

FRESHMEN

MEYER, MARILYN
Band, Pep Squad, G.A.A.

MEYER, RICHARD
Dramatic Club, Glee Club

MODDE, JOHN
Band

MORANVILLE, HAROLD
Football, Glee Club,
Intramurals

MOYNIHAN, SHIRLEY
Band, Pep Squad, G.A.A.

MUENCH, JANET
Band, Pep Squad, G.A.A.

OSTER, VONA
Band, Pep Squad, G.A.A.

OSWALD, MARTIN
Dramatic Club, Glee Club,
Class Pres.

PETZOLDT, MARVIN

PILZ, RONALD
Band

PINGEL, DON
Intramurals

RAYMER, ROSE
Band, Pep Squad,
G.A.A.

REISS, NORMAN
F.F.A., Band

RINEY, CAROL
Glee Club, Pep Squad,
G.A.A.

ROHDE, ELFRIEDA
Glee Club, Pep Squad

RYAN, JERRY
Basketball, F.F.A.

SCHREMP, CLYDE
Band, F.F.A., Dramatic
Club, Intramurals

SCHRUMPF, DARLEEN
Pep Squad, G.A.A.

SCHUMER, MELBOURNE
F.F.A., Intramurals,
Glee Club

SHAFER, ELLIS
F.F.A.

SHIELDS, ROBERT
F.F.A.

SHORT, SHERRY
Glee Club, Football,
Intramurals

STEFFENS, EDITH
Glee Club, Pep Squad

STELLING, MILTON

STICHT, THELMA
Pep Squad, Glee Club



STREET, ALVIN

STUEVE, HARLEN
F.F.A., Glee Club

SUTTERER, DONALD
F.F.A., Intramurals

TISHER, ROSE
Band, Pep Squad

TUCKER, BOBBY
F.F.A.

TUCKER, JAMES
Football, F.F.A.

WACHTER, MARY
Glee Club

WEBER, IVA
Glee Club, Pep Squad

WEITH, SHIRLEY
Glee Club, Pep Squad

WHARTON, DORIS
Glee Club

WILLIAMS, RALPH
F.F.A.

WINGERTER, TERRY
Football, Glee Club,
Intramurals

WOOD, JAMES
Football, Band, Glee Club

ZAHNER, MARY
Glee Club, Pep Squad

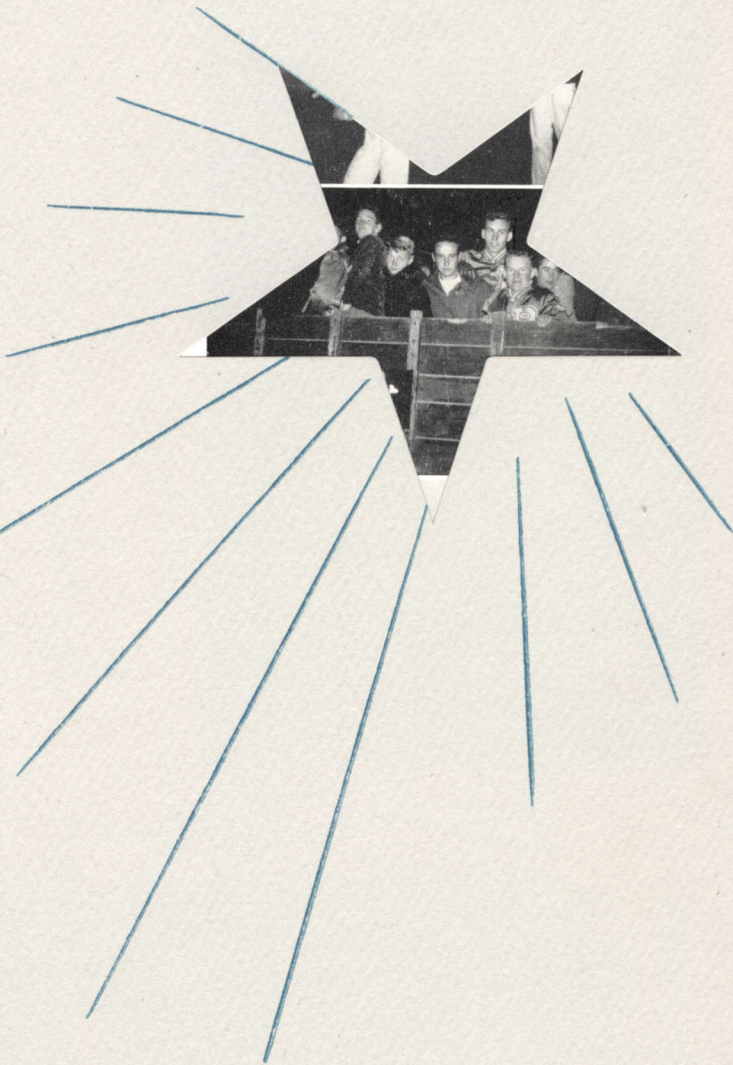


MY MISSION

To go forth strong in the will to do well my part, with a high sense of service, loyalty, and obedience that goes with trained citizenship . . . To show charity and courtesy to all and . . . To cherish PATRIOTISM, HONOR, AND SCHOLARSHIP . . . the traditions of P.H.S.

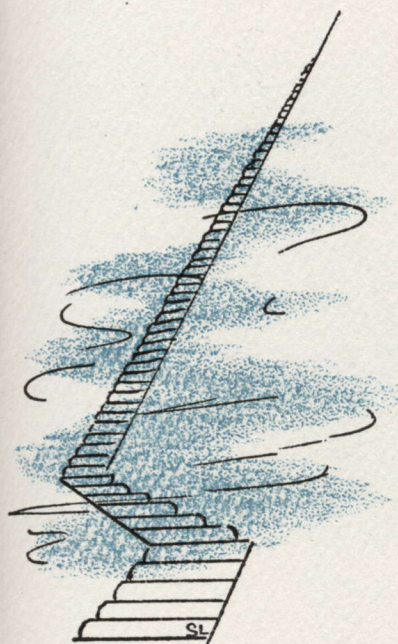
Class of '47

TWINKLE, TWINKLE, LITTLE STARS



SPORTS

—STARS AND STRIPES FOREVER



PEP RALLY

Hear it? See it? Loyal rooters responded to the "Pirate Prattle" October 29 and surrounded the Pirates at their campfires following a rally. Echoes of "hold that line" and the old fifteen rals resounded.



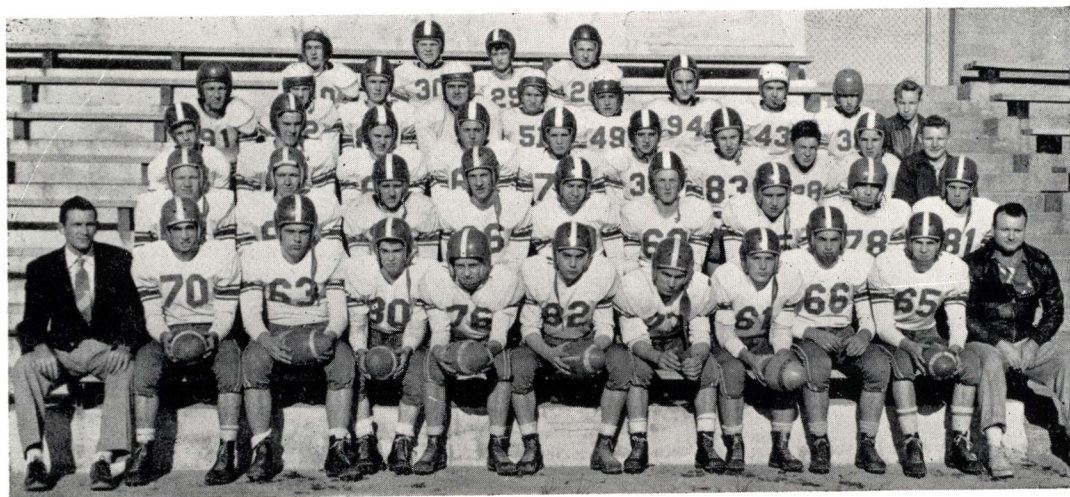
Cheer Leaders



Front, left to right: Betty Wahlers, Cozy Bierk, Ruth Meyers
Back: Judy Hoffstetter, Shirley Loberg, Wanda Tucker

THE PIRATE WAY

Squad



First row—Coach Birk, Earl Martin, Eddie Kiefner, Bob McAtee, Dale Lintner, Bill Cherry, Roy Boxdorfer, Leman Schrupf, Merlin Sandler, Paul Smith, Coach Fatchett. Second row—Bob Hoffman, Harold Hoehn, Robert Geile, Howard Thilenius, Lawrence Henderson, Lynn Conrad, Clyde Tipp, Herman Wills, Bob Thompson. Third row—Sherry Short, Robert Favier, John Schulte, Delbert Norington, Kermit Ruesler, Melvin Fischer, Don Hoehn, Larry Bert, Neil Steinbecker, Manager Schrupf. Fourth row—James Wood, Harold Moranville, Tommy DeRoe, Don Mueller, Terry Wingerter, George Hopfer, Melvin Hudson, Rex Bodenschatz, James Tucker, Manager Mabuce. Fifth row—Roy Fassel, Alfred Weinrich, Don Abernathy, Lloyd Kaempe.

1952 FOOTBALL SCHEDULE

			WE	THEY
Sept. 12	Crystal City — C.	Here	6	0
Sept. 19	Herculaneum — C.	There	20	13
Sept. 26	Festus — C.	Here	13	14
Oct. 2	Cape Central	There	0	33
Oct. 10	Flat River — C.	There	0	39
Oct. 17	Ste. Genevieve — C.	Here	20	0
Oct. 24	DeSoto — C.	There	0	38
Oct. 31	Farmington — C.	Here	32	6
Nov. 7	Fredericktown — C.	There	6	19
Nov. 21	Jackson	Here	12	39

PIRATES DEFEAT CRYSTAL CITY

The five hundred people who saw the Pirates fight their way to a 6 to 0 win over Crystal City seemed well pleased. The Fatchett men got off to a flying start by scoring in the early part of the game with Earl Martin going off right tackle. The extra point was missed. The rest of the game was played under the suspense that Crystal City would score and go ahead by making the extra point, but the Pirates defense held and the rest of the game was scoreless. Final score — P.H.S., 6 — Crystal City, 0.

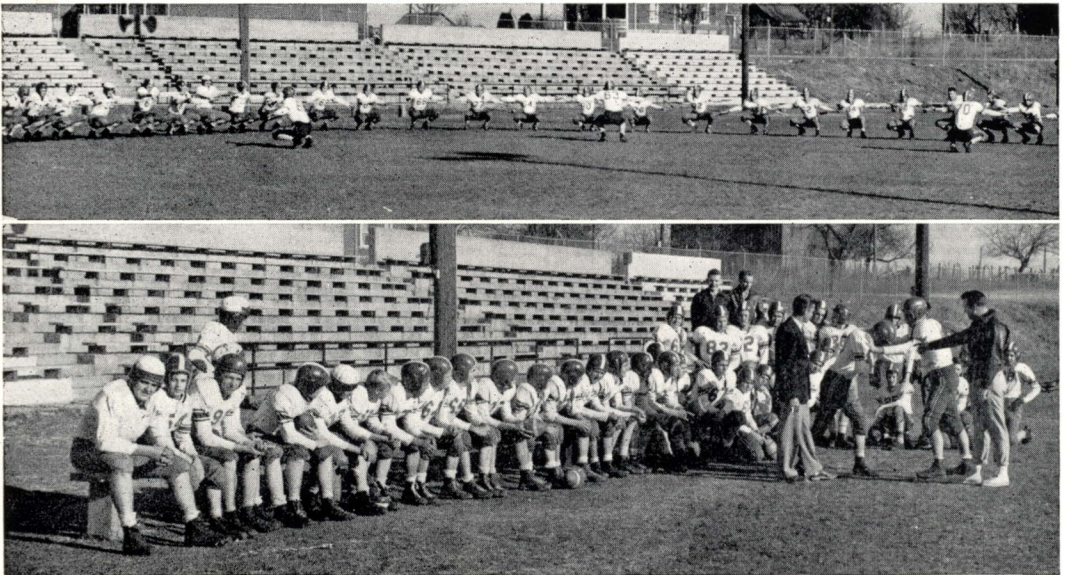
P.H.S. OUTPLAYS HERCULANEUM

The Pirates again got off to a fast start, when on the second play of the game Robert Hoffman scored on a pass play from Martin which netted 60 yards. Herky bounced back in the second quarter to score on a 45 yard run. The extra point was made. After the ball changed hands a couple of times, fullback Martin rambled 15 yards for 6 points and made the extra point. In the third period the Bucs worked the ball to the 12 yard line, from where Harold Hoehn raced over. The extra point was made by Martin. Herculanenum fought back later in the game to a T.D. Final score — P.H.S., 20 — Herculanenum, 13.

PERRYVILLE LOSES CLOSE ONE TO FESTUS

The Pirates lost the most exciting game of the season to Festus by the score of 14 to 13. The first score came in the second quarter when Festus went over from the four. The extra point was drop-kicked good. The re-

(Continued on Page 45)



Pirates Daily Drill
Bench Service

THE PIRATE WAY

EDDIE "KENT" KIEFNER—R.T.
Wt. 181, Ht. 6-1, Sr. (Co-captain)
Has determination to win and ability plus
Honorable mention on all state team

PAUL "SUDDY" SMITH—L.E.
Wt. 150, Ht. 6-1, Jr.
Great at catching passes and on defense

MERLIN "MUSCLES" SANDLER—L.G.
Wt. 170, Ht. 5-9, Jr.
A guard that never quits

LYNN "PRETTY BOY" CONRAD—L.G.
Wt. 150, Ht. 5-7, Soph.
Takes after his brother in more ways than one

ROY "BUZZ" BOXDORFER—L.T.
Wt. 146, Ht. 5-9, Jr.
Our grocery boy tackle

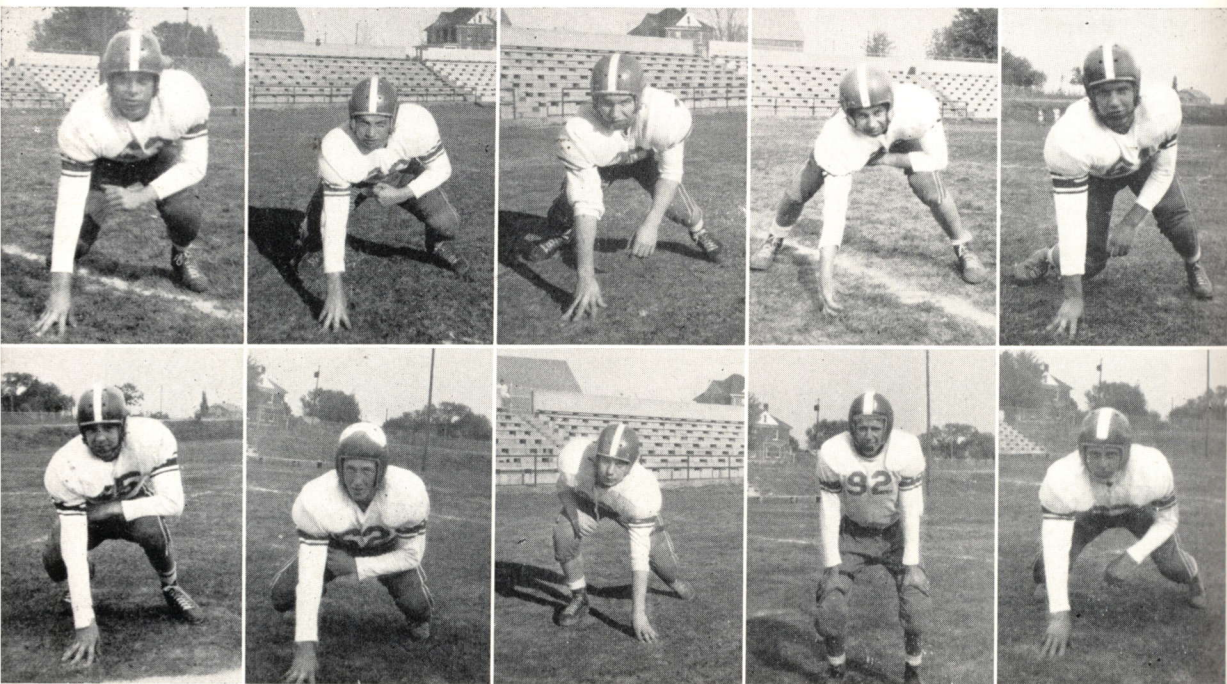
BILL "WILD HORSE" CHERRY—L.T.
Wt. 166, Ht. 5-10, Jr.
A combination fullback and tackle

DALE "AMBROSE" LINTNER—C.
Wt. 140, Ht. 5-11, Jr.
Just wait till next year

ROBERT "CURLEY" GEILE—L.B.
Wt. 146, Ht. 5-11, Soph.
Did a good job of line backing

LEMAN "SCHRUMPETY" SCHRUMPF—R.G.
Wt. 151, Ht. 5-5, Jr.
A very aggressive lineman both on offense and
defense

DELBERT "HOTSHOT" NORRINGTON—L.G.
Wt. 144, Ht. 5-7, Soph.
A star of the future



Kiefner
Smith

Sandler
Conrad

Boxdorfer
Cherry

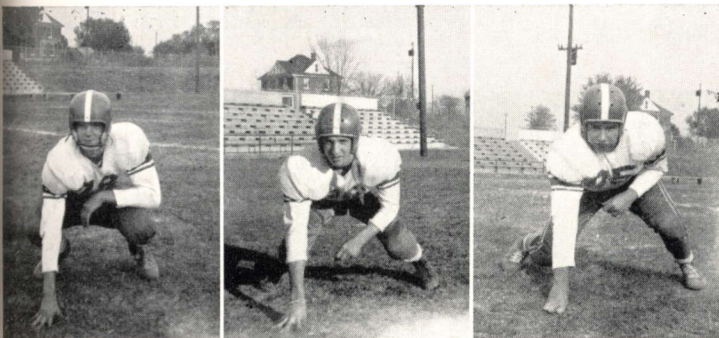
Lintner
Geile

Schrumpf
Norrington

FOOTBALL

Hoshn
Hoffman
McAtee
Mabuce
Schrumpf

Martin
Favier
Schulte
DeRoe



Wills

Thilenius

Tipp

HAROLD "CASEY" HOEHN—L.H.

Wt. 155, Ht. 5-7, Sr.

Our one and only left half back

EARL "CHICKEN FARMER" MARTIN—F.B.

Wt. 156, Ht. 5-11, Sr. (Co-captain)

Star passer and high scorer

ROBERT "YAC YAC" HOFFMAN—R.H.

Wt. 145, Ht. 5-5, Jr.

As fast as lightning and also an excellent punter

ROBERT "ORVILLE" FAVIER—F.B.

Wt. 152, Ht. 5-8, Jr.

Our speedy fullback for next year

ROBERT "MOUSEY" MC ATEE—Q.B.

Wt. 120, Ht. 5-4½, Jr.

One hundred and twenty pounds of quarterbacking

JOHN "SNAG 'EM" SCHULTE—L.E.

Wt. 130, Ht. 5-8, Soph.

Showed great progress in his second year

TOMMY "SLIM" DE ROE—R.E.

Wt. 130, Ht. 5-7½, Soph.

Loyalty plus

HERMAN "BLOCKBUSTER" WILLS—G.

Wt. 146, Ht. 5-8, Jr.

A fullback who was converted to a guard this year

HOWARD ED "HOW" THILENIUS—R.E.

Wt. 164, Ht. 6, Soph.

I wish they would come around this end

CLYDE "RUBBER" TIPP—L.T.

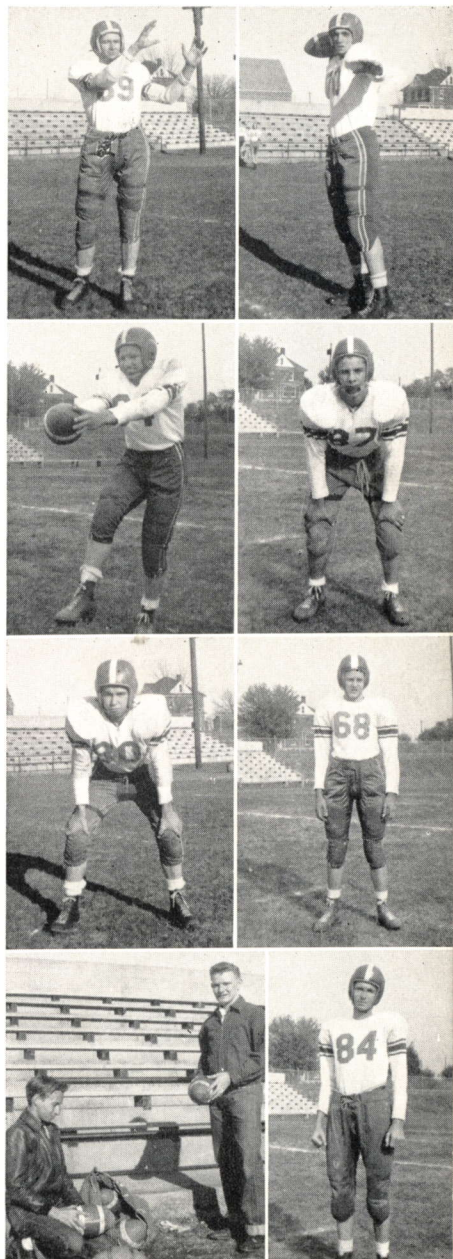
Wt. 198, Ht. 5-9, Jr.

Suvania was never like this

DALE SCHRUMPF and

EDDIE MABUCE—Managers

Indispensable two

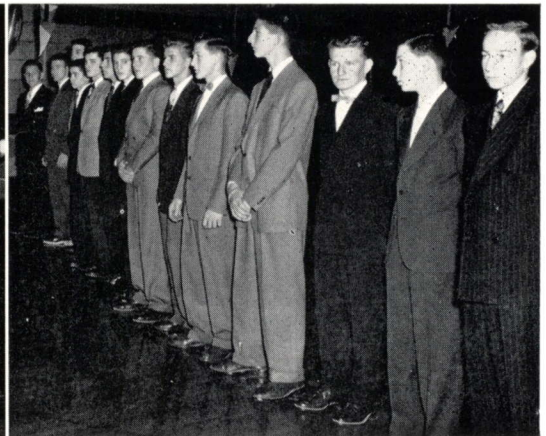


FOOTBALL QUEEN



SHIRLEY

receives the 1952 crown from Eddie



Pirates and their ladies form the Prom Aisle to the throne

FOOTBALL (Continued)

(Continued from Page 41)

mainder of the first half was scoreless. The Bucs came to life after the half. After a 55 yard march Martin scored. A pass was good for the extra point. A few plays later a Pirate fumbled the ball and Festus picked it up and raced for a T.D. The extra point made the score 14 to 7. During the final period, Hoffman went over, but the much needed point was missed. Final score — Festus, 14 — P. H.S., 13.

PIRATES CRUSHED BY CAPE

Perryville's offense and defense was completely crumbled after the Cape boys made two speedy touchdowns and two extra points.

The T.D. came after a blocked punt and a Pirate fumble. In the second quarter Cape intercepted a pass and went on to score a T.D. and extra point. After a scoreless third quarter Cape came back to score two more touchdowns. Final score — P.H.S., 0 — Cape, 33.

FLAT RIVER TROUNCES PERRYVILLE

Flat River picked up five touchdowns and three extra points in the second quarter and went on to win 39 to 0. The other quarters were very even, but the second quarter was too much for the Pirates. Final score — P. H. S., 0 — Flat River, 39.

PIRATES DEFEAT STE. GENEVIEVE

The Pirates scored all 20 points in the first quarter and the early part of the second. Hoehn, Martin, and Hoffman made the T.D.'s with Robert McAtee and Hoffman making the extra points. An unusual thing happened in the game. Perryville scored all their 20 points before they chalked up a first down. Final score, P.H.S. 20 — Ste. Genevieve 10.

PERRYVILLE DOWNED BY DeSOTO

The Pirates were defeated by a big DeSoto team 38 to 0. DeSoto was the Mineral Area Conference champ team.

P.H.S. WINS OVER FARMINGTON

The Pirates played hard to defeat Farmington 32 to 6. Robert Hoffman scored the first touchdown after intercepting a pass and ran 30 yards. Martin sprinted 35 for a T.D. and again in the second quarter Martin went through

(Continued on Page 50)

FOOTBALL PROM



Joan, Dorothy, Belinda and Earlene of the Queen's Court

Their escorts were Clyde, Merlin, Harold and Earl

THE PIRATE WAY

Squad

Left to Right—Abernathy, D. Schrumpf, Weinrich, Fadler, Schulte, Norrington, Smith, Asst. Coach Birk, Coach Fatchett, Kiefner, B. Thompson, Hand, Hoehn, Henderson, L. Schrumpf, Hoffman, McAtee

B TEAM

Left to Right—Abernathy, L. Schrumpf, Weinrich, Fadler, B. Thompson, Asst. Coach Birk, Smith, Norrington, Hand, Schulte, Hoffman, McAtee



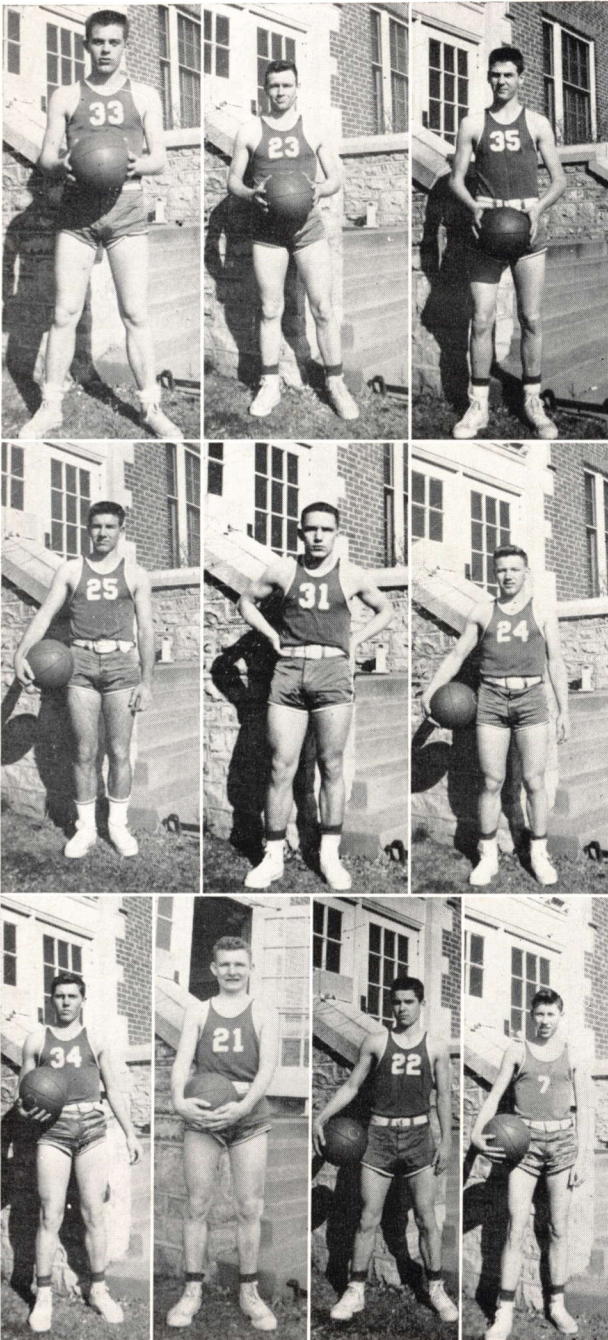
1953 BASKETBALL SCHEDULE

			B		A	
			WE	THEY	WE	THEY
ST. MARYS	Dec. 12	Home	39	19	45	40
FREDERICKTOWN	Dec. 16	Home	35	30	31	46
LUTESVILLE TOURNAMENT						
PATTON	Dec. 18	Away			33	54
PATTON	Jan. 6	Home	38	31	57	40
DELTA	Jan. 9	Home	37	30	32	40
FREDERICKTOWN	Jan. 13	Away	56	25	30	53
JACKSON	Jan. 20	Away	34	30	47	80
STE. GENEVIEVE	Jan. 23	Away	32	24	42	48
ST. MARYS	Jan. 27	Away	32	27	44	42
JACKSON	Jan. 30	Home	36	28	53	76
STE. GENEVIEVE	Feb. 6	Home	33	32	49	45
DELTA	Feb. 10	Away	43	41	36	53
PATTON	Feb. 17	Away	37	30	50	45
FLAT RIVER REGIONAL TOURNAMENT						
FLAT RIVER	Feb. 24	Away			45	60

The "A" team finished the season with a five and nine record. The pirates will lose four seniors.

The "B" team went through the season undefeated by winning 12 straight games. This is the first undefeated team at PHS. The Pirates showed determination, by coming from behind in five of the games.

BASKETBALL



EDDIE "EMMIT" KIEFNER—F
Wt. 181, Ht. 6-1½, Sr.
Over the rim, "Eddie"

HAROLD "DEAD EYE" HOEHN
Wt. 155, Ht. 5-9, Jr.
Good in the clutch

PAUL "POINTS" SMITH
Wt. 150, Ht. 6-2, Jr.
Smitty's total points were high

LAWRENCE "HOMER" HENDERSON
Wt. 159, Ht. 5-7, Sr.
Was out the first of the season with injury

LEMAN "HOTSHOT" SCHRUMPF
Wt. 151, Ht. 5-6, Jr.
A dead shot from the court

DELBERT "RACK 'EM UP"
NORRINGTON
Wt. 144, Ht. 5-8½", Soph.
A "B" team backer

ROBERT "CLARK" HOFFMAN
Wt. 145, Ht. 5-6, Jr.
A real hustler

DALE "ADDISON" SCHRUMPF
Wt. 150, Ht. 5-6, Sr.
"Our utility man"

ROBERT "SCRATCH" MC ATEE
Wt. 120, Ht. 5-5, Jr.
A consistent ballplayer

GEORGE "LAY UP" HAND
Wt. 139, Ht. 5-8, Jr.
Has another year on the court

Kiefner, Hoehn, Smith, Henderson, Schrumpf, L., Hoffman,
Norrington, Schrumpf, D., McAtee, Hand

INTRAMURAL SPORTS

Walk into the P. H. S. gym almost any noon hour and you will find either the girls or boys participating in the intramurals which are played from October through April.

Teams were chosen for a basketball round robin tournament and a volleyball double elimination tournament by the boys. The basketball tournament was won by the Seniors and volleyball was won by Wildcats.

The classes of the girls who are in the Girls' Athletic Association competed in basketball, volleyball, and softball. Walking away with the top honors in basketball was the Senior team. Volleyball honors were won by the Junior girls and softball was rained out.



Senior boys team—Standing: Mahnken, Feiste, Martin, Lohmann, Winkler, D. Schrupf. Kneeling: Milliano, Rau, C. Steffens, Roth
Seniors girls team—Standing: Bohnert, Weinrich, Lakenan, Schremp, Schuessler, Mehner, Doernhoefer. Kneeling: Martens, Loberg, Hager, Ochs, Modde, Bredall, Hilderbrand
Boys All Star—Standing: Biri, Norrington, Martin, Bodenschatz, Schumer, Kneeling: Stueve, Fadler, D. Hoehn

SPORTS IN AND OUT OF CLASS

Volleyball, Field Day, Gymnastics, Pep Squad in action



PEP SQUAD

School spirit is that indefinable something that grips you when you see a Pirate running down the field with a football tucked under his arm and you yell and yell. That is why this group is organized. And we were successful, too, for we followed the team to almost all the football as well as basketball games. Win or lose, we play our part.

THE P.H.S. WAY

(Continued from Page 45)

the center of the line for another score. The extra point made the score 19 to 6. Farmington scored in the third quarter from the one foot line. Robert McAtee scored on a quarterback sneak in the fourth quarter and a Martin to Smith pass was good for the extra point. Later in the game Martin passed to Smith for the final T.D. Final score — P.H.S., 32 — Farmington, 6.

PIRATES LOSE TO FREDERICKTOWN

The Pirates journeyed to Fredericktown to receive a 19 to 6 setback. The score at the end of the half was 13 to 0. In the last half each team added 6 points. Final score — Fredericktown, 19 — P.H.S. 6.

PERRYVILLE LOSES LAST GAME

The Pirates played a good game the first half, although they were losing 12 to 13. During the rest of the game, Jackson scored 4 more T.D.'s and 2 extra points. Final score — Jackson, 39 — P.H.S., 12.



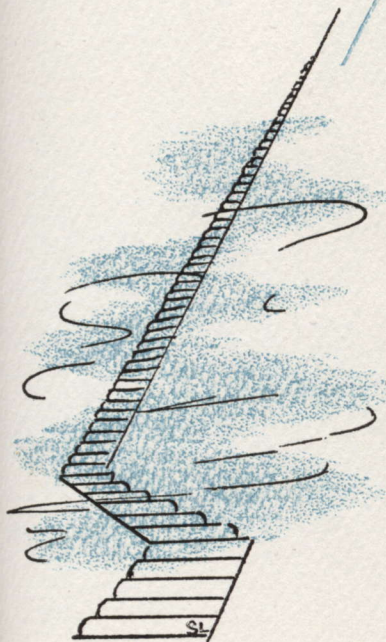
BASEBALL

In interschool competition we also have a baseball team which began working out soon after the close of the basketball season. The Pirate baseball team finished the season with the following lettermen and provisional lettermen:

LeRoy Mahnken	Paul Smith
Marvin Koenig	Earl Martin
Robert Hoffman	Robert McAtee
Harold Hoehn	Harold Geile
Delbert Norrington	Alfred Weinrich
Lawrence Henderson	Bob Geile

THE BASEBALL SCHEDULE

Date	Place	Opponents	Score	
April 14	City Park	Ste. Genevieve	P.H.S. 5	Ste. Gen. 4
April 16	There	Fredericktown	P.H.S. 5	Fred. 0
April 27	There	Ste. Genevieve	P.H.S. 10	Ste. Gen. 6
April 27	There	Ste. Genevieve	P.H.S. 8	Ste. Gen. 6
May 5	Fredericktown	Ste. Vincent	P.H.S. 1	St. Vin. 2



ACTIVITIES

—STARLIGHT, STAR BRIGHT, FIRST
STAR I SEE TONIGHT . . .



Dolores

Tuba Queen

1 9 5 3

BANK OF PERRYVILLE

THOUGHTS ALONG THE WAY

"Be so strong that nothing



Front row: Schlimpert, West, Modde, Doernhoefer, Roth. Second row: Prost, Leimbach, Martens, Ochs, Lakenan, Hager. Back row: Schrupf, Eggers, Loberg, Steffens, Kiefner, Fassold, Price, Edmond

TUBA STAFF

Here it is! Our effort to collect the faces and events of your school year 1952-53 and all between the covers of one little book, *The Tuba*.

Our problem, as usual, was to select a theme as a sort of inspiration to tie the book together. As usual, also, when themes are suggested there are either none or too many. Our choice, as you see, is *STAIRWAY TO THE STARS* and our motto "Aim high and hold your aim" is closely linked.

What does it require to edit a book? Hours of selling sandwiches, standing in the cold and not seeing the games; contacting business places; taking pictures, some over and over, and when the sun is out finding that somebody is absent; checking and rechecking names; writing and then finding that the results are unsatisfactory, to say nothing of trying to be original. Then we remember "that nothing worthwhile happens by chance." So here it is — *The Tuba* of 1953.

DAIRY QUEEN

can disturb your piece of mind"

PIRATE PUNS

This is a group who are always "busy as bees" collecting the latest news. In the publications class they learn the principles of writing and put them to practical use by publishing the Pirate Puns monthly. This staff of future journalists do their best to keep PHS well-informed.

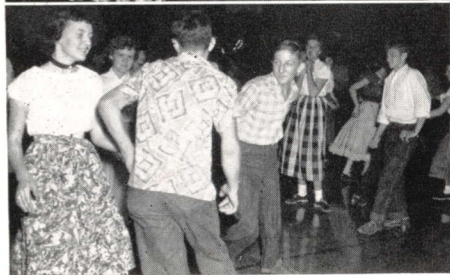
Front row: (left to right) Miss Sander, sponsor; Manche, Sandler, Wilson, Baudendistel.

Back row: S. Bucheit, Mahnken, Cox, O. Bucheit.



HOME TRUST COMPANY

Make all your friends feel



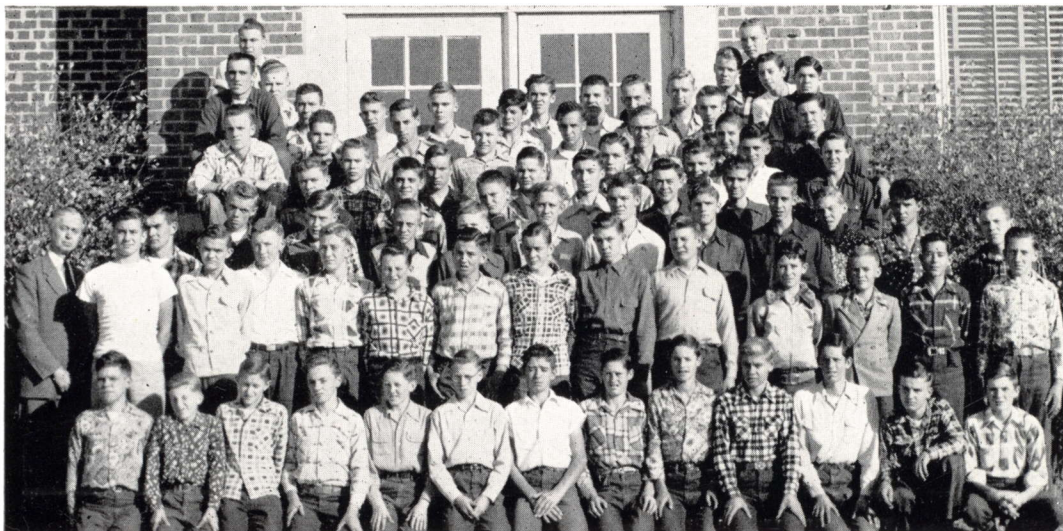
BELINDA
BARNWARMIN'
QUEEN

QUEEN AND HER COURT



PERRYVILLE DAIRY

that there is something fine in them"



First row—(left to right): Cissell, Reiss, Barber, H. Stueve, Shields, Wayne Finger, Detjen, J. Tucker, Manning, Wingerter, B. Tucker, G. Long, Boesch
Second row: Mr. White, sponsor, Schwein, Farrar, A. Oswald, Henderson, Kayser, N. Hoehn, Brown, Schumer, Williams, Koenig, L. Fritsche, Johnson, C. Stueve.
Third row: Bodenschatz, B. Thompson, Bergman, W. Hoehn, Jackie Hayes, Brueckner, C. Schremp, Moneyhun, Kester, Sutterer, Riehn, B. Kester
Fourth row: Lee Statler, Hadler, Crawford, Fiehler, Hotop, Kaempfe, Esselman, Alkmeyer, Jimmy Hayes, Finch, Hudson
Fifth row: Lohmann, Pannier, Walter Finger, Miesner, Johnny Tucker, Dreyer, V. Feiste, Prevallet, Friese, R. Geile
Sixth row: Martin, Lowes, Milliano, H. Hoehn, Rauh, P. Fritsche, Sadler, Kassel, W. Schremp, Lintner, R. Popp, Abernathy, Brickhaus, S. Braun, Robinson

F. F. A.

Step up and watch the parade go by and you'll see the F.F.A.'s take first place at the Cape Fair.

This year the Future Farmers of America, Perryville Chapter held to their practice of former years by winning first place in the parade at the Cape Fair. In addition to their other activities they entered judging teams in the district contest at Cape in the fields of Field Crops, Dairy Production and Products, Farm Mechanics and Parliamentary Procedure.

Socially the annual Barnwarmin' for the Home Economics girls on October 14 stood right out in front too.

HUBER OIL COMPANY

Look on the sunny side of everything



Standing: Bredall, Hand, Hudson, Miss Scholes, sponsor; Kiefner, Eggers, Biehle, Cherry, Ruesler, Brewer, Lakenan, Modde
Sitting: Loberg, Doernhoefer, Quintana, Hager, Martens, Bierk, Ochs



Initiation

SILVER DAGGER

There's drama in the air!
What will you have mystery,
comedy, or tragedy? This group
is well prepared to fill any cate-
gory you choose. The annual
play "That's Our Boy" was giv-
en on December 10.

INTERSECTION CAFE & SERVICE STATION

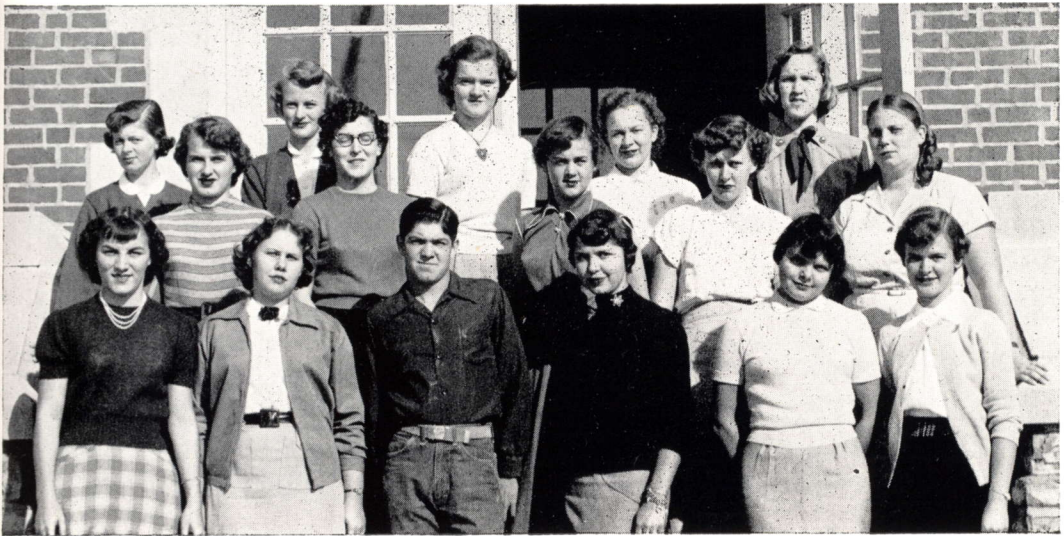
and make your optimism come true

LIBRARY STAFF

"Some books are to be tasted, others to be swallowed, and some few to be digested." So said Bacon in his essay on "Studies." The library is the place where one can find books to meet these varied purposes — to suit your taste in reading. Then, too, you can be served by any one of the girls listed and in the most amiable manner. A special effort was put forth this year to recheck, repair, and recatalogue all books.

Go into your library and look around. There may be a friend awaiting you there.

Front row: Riney, Wilson, Robinson, D. Martens, C. Martens, Devenyns
Second row: Coffelt, Manche, Franklin, Joy, Mehner
Back row: Wahlers, Grantham, Winter, Fischer, Price, Sponsors, Minton, Heflin



KIEFNER LUMBER COMPANY

To think only of the best, to work only for the best



HOME EC

Front row—left to right: Wahlers, Prevallet, C. Martens, J. Modde, Layton, Devenyns, Hopfer, V. Graff, House, Foster, Duvall, S. Schremp

Second row: Thompson, Barks, Lukefahr, N. Kassel, L. Kassel, M. Meisner, Porter, V. Schuessler, R. Meisner, Franklin, Joy, Sewing, Hotop

Third row: C. Fischer, Black, Vogel, Eunice Steffens, Otto, Roth, Henderson, DeWilde, Mahnken, Hahn

Fourth row: Detjen, Burroughs, Brewer, Heinbokel, Farrar, Renaud, Enke, Oehlert

Fifth row: Sandler, Baudendistel, Wilson, Krahn, Fassold, Anderson, Riney, D. Ruesler

Sixth row: Cox, M. Schuessler, Lorenz, Schlimpert, Graff, Wahlers, Rudisaile

Seventh row: Weinrich, B. Schremp, Kurre, Manche, Buchheit, Fischer, S. Modde, Edmond, Bredall, Loberg

Eighth row: R. Steffens, Trapp, Hager, Hilderbrand, Doernhoefer, Coffelt

Back row: Prost, V. Ruesler, Elaine Steffens, Leimbach, Bohnert, Lakenan, Ochs, Randolph, Price, D. Martens, Oster, sponsor, Mrs. Thilenius

You guessed it, the Home Ec. I girls are baking brownies. Those pretty blouses the Home Ec. II girls are wearing today weren't bought ready-made either. We know how to entertain too, for we did just that when we invited the F.F.A.'s to an election-night party and gave a Mothers Day Fashion Show. We prepared and served the Lion's annual football banquet, and it's always a treat to plan our own Christmas Tea. The Magazine Drive kept us busy in February to say nothing of mending the football and basketball suits. It was a full year but it was fun!

LAKENAN INSURANCE AGENCY

G.A.A.

If you happen by cloud 77 notice closely the star on the left. From it you may see several of our G.A.A. members hanging by their toes, getting their daily exercise. The sports-minded members of P.H.S. find refuge in the Girls Athletic Association.

The particular activities of the G.A.A. is to sponsor all extra-curricular activities in connection with sports; arouse school spirit; promote sportsmanship; to officiate at games; and to award letters. These letters are earned each year by participation in sports, by sportsmanship and by scholarship.

In February a team from each class went to Ste. Genevieve for a day of basketball; later in the year eight Senior girls were chosen to participate in the Play Day at Southeast Missouri State College. Their annual party was also of an athletic nature.



Front row: P. Abernathy, Wahlers, Hager, Doernhoefer, Howard, Lohmann, Randolph, Miss Smelser, Sponsor, Hilderbrand, Bredall, Bierk, Tucker, Mehner, J. Schrupf
Second row: B. Schremp, Weinrich, J. Barber, Schremp, Gerringer, Hoehn, V. Oster, Dietrich, N. Kassel, Porter, Miesner, J. Modde, E. Steffens
Third row: Thompson, Roth, Henderson, Hahn, House, Black, Lukefahr, Prevallet, Layton, Devenyns, C. Martens, Hopfer
Fourth row: M. Schuessler, Brewer, S. Modde, Lakenan, V. Schuessler, Raymer, Koenig, Hudson, Funke, McAtee, Feiste
Fifth row: Ochs, D. Martens, Loberg, Kiefner, D. Schrupf, Fluegel, Bohnert, Heimbecker, Herschbach, G. Barber, Reiss, Riney
Sixth row: Enke, Oehlert, Fischer, Kranawetter, Grantham, Winter, Vogel, Trapp, R. Steffens, Graff, Foster
Seventh row: Kramer, Meyer, Hoffstetter, Moynihan, Muench, Quintana, A. Coffelt, L. Modde, Johnson, DePauw, L. Oster, C. Coffelt

NORTH MAIN STREET GARAGE

Give so much time to the improvement of yourself



BAND

Front row: P. Prevallet, Bredall, Janet Thayer, Hinkle, Hager, D. Prevallet, Miesner, Moynihan, Bollinger, Joan Thayer, Trapp, Eunice Steffens. Ochs

Second row: Thompson, J. Modde, Fadler, Weibrecht, R. Steffens, Muench, S. Modde, Lakenan, Oehlert

Third row: Anderson, Huber, M. Kranawetter, L. Kassel, House, Porter, Schrumpf, Barber, V. Oster Kiefner, Layton

Fourth row: Elaine Steffens, Bierk, Buchheit, Winter, Lorenz, Reiss, Hopfer, Gerringer, M. Meyer, Loebbs, N. Kassel

Fifth row: Doernhoefer, Guemmer, Biehle, Corse, Hilderbrand, D. Martins, Wahlers, Howard, L. Oster, Devenyns

Sixth row: L. Meyer, E. Kranawetter, Franke, Kurre, Ruesler, C. Martens, Lohmann, Abernathy, Geile

Seventh row: Mueller, Hudson, Mr. Adams

— And here they come marching down the field — the P.H.S. band. Attending all the football games this year was just one of their activities.

They took part in two festivals — the Fall Marching Festival at Jackson and the Spring Festival at Cape.

What parade would be complete without a band? P.H.S. participated in four parades plus the Pep Rally preceding the Farmington Football game and the concert at the Cape Fair.

A complete year! And as a grand finale they presented their annual Spring Concert May 8.

PERRY COUNTY REPUBLICAN

that you have no time to criticize others

P FORMATION



BEGINNERS AND INTERMEDIATE BAND

First row: Finger, Reiss, Kassel, N. Koenig, Fritsche, Modde, McAtee
Second row: Duvall, Wahlers, R. Koenig, Funke, Hudson, Barber, Fiehler, Mr. Adams
Third row: Muench, Bachmann, Fischer, S. Schremp, Heinbokel, Hoffstetter, Pilz
Fourth row: Raymer, Kaempfe, Feiste
Last row: D. Koenig, Fornkahl, Hotop, Lueders, Schremp, Bauwens



This up-and-coming group of musicians is striving to take its place in the big PHS band and from what we hear they are well on their way.

PROST IMPLEMENT COMPANY



COME ON
DOWN
SOUTH



♦ ♦



Junior
Senior
Prom
1952



FROM INVITATIONS TO CLEAN-UP

... was the invitation the juniors extended to the seniors for April 17, 1952. Accepting, we seniors arrived on the steamboat Prom and docked among the willows on the banks of the Mississippi. As we stepped from the gang plank and received our programs we were overwhelmed with the enchantment the scene disclosed. The southern setting was carried out in cotton fields and in a garden complete with a brick walk bordered with flowers.

Calvin Eggers strolled on the porch of the great colonial home to welcome the guests down south. Glen Fairchild responded for the seniors with Southern Hospitality, and to add atmosphere to the setting, Clara Mae Coffelt sang "Carry Me Back To Old Virginia."

An evening with the delightful music of the Melodiers — a stroll down the garden path where we were served flower-shaped ice cream and frosty cakes under a new moon — the scent of magnolia blossoms — all will be an unforgettable memory in our P. H. S. calendar.



ZOELLNER'S BOTTLED GAS SERVICE



A NEW STAR APPEARS

Opening the 1952 school year with our Missouri Theme Entry in the County Fair Parade during the first week of school. Shown are Missouri — the state flower, Hawthorn — the Bluebird — the Show Me and Shows You groups and — Miss Missouri, Joan, on the float "Missouri, the Heart of the Nation."

STARRY EYED

Seniors receive their rings and admire them — the band leads the Armistice Day and Christmas C of C parade when our entry "Twas the Night Before Christmas" won the second place — the Staff packs our gift boxes for Red Cross — Thanksgiving table decorations in the making, and the apron fashion show.





A series of parties both in the making and the event proper. The Sophomores cutting snowflakes for their December Snowball party — footballs for the immense football chandelier to be lowered as the climax of the Prom — the Home Ec. return party for the F.F.A.'s on election night.

REVEAL



The Senior "Stairway to the Stars" party in which the decorations carry out their motto and Tuba theme — the Band initiate their new members in January — the Dramatic Club enjoys a Valentine party — and Donald, Sophomore Pilgrimage representative, Melba, the D.A.R. citizen, and LeRoy, representative in the American Legion Oratorical Contest.



GLEAMING STARS

Dolores, the Tuba Queen and her court — V.I.P.'s at the Mardi Gras party — Captains assembling the magazine sale results — our first Tuba Queen crowning — and eager Juniors in a huddle.

I TOLD EVERY LITTLE STAR . . .

about the names and places of business listed on these pages. So follow the beam right into their very doors to find just what you want, when you want it, while on your way.

BERGMAN'S HARDWARE CO.
BIERK MOTOR CO.
GEORGE BOCKHORST
BREWER MONUMENT CO.
BUEHLER'S MEAT MARKET
BUSH INSURANCE AGENCY
CITIZEN'S ELECTRIC CORPORATION
CITY TAVERN
JACK L. COLLIER
COUNT'S STUDIO
DeLASSUS DRUG STORE
DUERR'S MEAT MARKET
EAST PERRY LUMBER CO.
EWALD'S BAR-B-Q
FAMOUS SHOE STORE
FIRST NATIONAL BANK
FRED'S FLOWER SHOP
FROHNA MACHINE SHOP, INC.
GIFT CHEST JEWELERS
GRANDVIEW SANDWICH SHOP
ORA N. GUTH
GUYOT & ERNST
HANQUIST OIL COMPANY
HILDERBRAND FEED STORE
INTERNATIONAL SHOE COMPANY
K. C. BOWLING ALLEY — Joe Fenwick, Mgr.
KOENIG & SANDLER PAINT SHOP
KROGER COMPANY
L. W. TRANSFER

LAWRENCE & TLAPEK
LEE'S RADIO AND TELEVISION SERVICE
LITTGE BROS., INC.
DR. S. T. LOBERG
LYDIA'S SHOP
M.F.A. CENTRAL CO-OPERATIVE
MANNING'S DRUG STORE
MAY & KIEFER AUTO SALES
MINERS LUMBER COMPANY
OTTE'S CLEANERS
PERRY COUNTY FARM EQUIP. CO.
PERRY COUNTY MEDICAL SOCIETY
PERRY COUNTY SAVINGS AND LOAN ASS'N
PERRYVILLE FEED AND PRODUCE
PERRYVILLE CHEESE CO.
PERRYVILLE MACHINE SHOP
LEO J. ROZIER
ROZIER'S MERCANTILE STORE
RUDERT JEWELERS
SANDEGREN LOCKER PLANT
SENIOR CHAMBER OF COMMERCE
FRANCES TOOHEY JR.
THURMAN IMPLEMENT COMPANY
L. A. TUCKER TRUCK LINES
CURT VOGEL
WEBER & HENSON
WILSON 5 AND 10
YOUNG AND SON'S

I TOLD EVERY LITTLE STAR...

A Friend
Al & Don's Tavern
Bellman Hardware Co.
Bey Funeral Home
Boettcher Bros. Garage
Dr. G. H. Bredall
A. G. Buchheit Shoe Repair Shop
Cashion's Grocery
Dr. M. H. Cherry
Crite's Market
Dr. Howard Dickman
Dixie 66 Service
Dr. Pepper Bottling Co.
Eggers and Company
Walter A. Eggers
Estel Grocery

Farrar Transfer Co.
Fenwick Service Station
Fenwick's Store — Brewer
Fischer & Fritsche, Wirth Merc. Co.
George Fischer
Fischer Merc. Co.
Friendly Furniture Store
Fritz's and Glenn's Tavern
Frohna Creamery
Frohna Garage
Frohna Hardware Store
Dr. E. J. Gahan
Golman's Dept. Store
Haskel's Drug Store
Hi-way Cut Rate
Hoechle Bakery

NATIONAL HONOR SOCIETY

On Tuesday, April 21, Perryville High School held its thirteenth induction ceremony of the Perryville Chapter of the National Honor Society. Candidates are rated on the qualities of CHARACTER, SERVICE, LEADERSHIP, and SCHOLARSHIP before receiving membership.

The induction ceremony was presented by Miss Johnnie Scholes and Mr. William Minton, faculty members, and Calvin Eggers, Melba Fischer, Peggy Lakenan, and Shirley Loberg, seniors who became members last year.

The seniors inducted into the society are Anna Price, Eddie Kiefner, Shirley Modde, Dale Schrupf, Ruby Steffens, Shirley Edmond, Esther Graff, and Nina Prost. George Hand, George Franke, Dorothy Huber, and Melvin Hudson were the juniors given membership.



Shirley, Calvin, Peggy, Melba.

They held their aim.

I TOLD EVERY LITTLE STAR...

Hutson Furniture Co.
Junior Chamber of Commerce
Quentin Klaus, Watchmaker
Longtown Grocery and Hardware
Lorenz Shoe Store
T. J. Matthews
Oscar Mecker Real Estate and Ins.
Mercier's Theater
Sheriff Milner
Moore Oil Co.
Roscoe D. Moore
Naeger's Garage
Nation Wide Grocery
Joe A. O'Brien's Electric Co.
Och's Garage
Palisch & Fischer
Perry County Farm Bureau
Perry County Farm Bureau Service
Co.
Perryville Auto Supply
Perryville Cleaners
Perryville Ice Company
Perryville Optimist Club
Petts Real Estate Co.
Pevely Dairy Bar
Pingel Decorating Co.
Gerald Popp
O. F. "Boots" Preusse

Prevallet Jewelers
Raffa T. V. Service
Railway Express Agency
Red & Tom's Barber Shop
Ruesler Truck Service
Schemel's Feed Store
Schlattman's Market
L. M. Sippel Auto Repair Shop
Steubner's Store
Sutterer's Market
Sutterer's Sales and Service
Sutterer's Service Station
Kermit Tucker
The Style Shop
U. S. Post Office
Wallie's Place
June Walters
Otto Werner — Frohna
Western Auto Assc. Store
White Way Motel
Wides Oil Co.
Dr. C. M. Wildman
Willenbring Hatchery
Winter's Store
Wonder Inn
Y & Y Motor Service
Young's Grocery
Zahner's Service Station



LITTLE STAR

*Little star, twink'ing in the sky of night,
I love to see your gleam of heavenly light,
For it displays in shining splendor
A faith and courage boundless darkness cannot binder.
If you can peep from out the clouds surrounding,
If you can twinkle gaily despite trouble besetting,
If you can brighten the present from Heaven so high,
Then why, on the earth, oh why can't I?*

A.P. '53

Our Closing Quote

"Silently, one by one, in the infinite meadows of Heaven,
Blossomed the lovely stars, the forget-me-nots of the angels."

— Longfellow

SWINGING ON THE STARS