

SEPTEMBER

Hello from the PTA!

For those that are new to McDivitt, welcome, and for those returning, welcome back. We are thrilled to bring a variety of events to McDivitt this year and hope to make each students' educational experience that much more special. Everything we do is to benefit all children so whether you are a PTA member or not, we ask that you review this PTA Packet each month as it contains information for all families. Each activity is optional and we strive to create a community culture where everyone is included in any way they wish. We do not require volunteering, participation or fundraisers. Do what you can, if you can, when you can and for those that would like to be more involved, it's always appreciated. As a group of committed families and dedicated educators and administration, we know together we can bridge communication and do incredible things for our children and staff. Here are a few ways you can stay informed and support McDivitt students and staff this year...

- 1. Become a PTA Member.** Individual is \$10 or Family (2 adults) is \$15 with no requirements.
PTA Membership: <https://mcdivittpta.memberhub.com/store>
- 2. Stay informed.** Review the PTA packet emailed each month and Mrs. Coletti's Newsletter.
You can also review the backpack and PTA website: <https://mcdivittpta.memberhub.com>
- 3. Members can join our private Facebook group.** Helpful reminders from all school groups.
PTA Facebook Group: <https://www.facebook.com/groups/mcdivittpta2023to2024>
- 4. Familiarize yourself with the McDivitt website.** Best source for answers at anytime of day.
McDivitt Backpack: <https://www.oldbridgeadmin.org/o/jmes/page/information-flyers>
- 5. Share fundraisers** with friends, family, neighbors and co-workers. It truly takes a village!
Favorite our public FB page for shareable links: <https://www.facebook.com/james.mcdivitt.52>
- 6. Attend events** when you can. Come as you are, when you can. We'd love to say hello!
Our calendar is always changing and will be updated in each packet to help you plan ahead.
- 7. Save our email** for PTA questions and suggestions or see each flyer for contact information.
PTA Email: McDivittPTA@McDIVITTPTA.com. School-related questions should go to the school.

From school assemblies, book fairs, STEM nights, spirit nights, class parties, carnival, a dance, kids' nights out, a Holiday Shoppe and so much more, each dollar raised will allow us to do as much as possible this year. Over 250 parents, guardians, family members and staff have already shown wonderful support with your membership and we thank you! Looking forward to a terrific school year.

McDivitt PTA Board of Directors,
Christine Rue - President
Kelly Gill - Treasurer
Karen Paton - VP Membership
Dee Szwedo - VP Fundraising
Michele Dippold - VP Student Activities
Jennifer DePalma - Secretary
Andrea Hanley - Communications

PTA EMAIL: MCDIVITTPTA@MCDIVITTPTA.COM

PTA WEBSITE: [HTTPS://MCDIVITTPTA.MEMBERHUB.COM](https://MCDIVITTPTA.MEMBERHUB.COM)

PTA MEMBER VOLUNTEER SIGN UP: [HTTPS://SIGNUP.COM/GO/SPMPISM](https://SIGNUP.COM/GO/SPMPISM)

PTA MEMBER FACEBOOK GROUP: WWW.FACEBOOK.COM/GROUPS/MCDIVITTPTA2023TO2024

2023-2024 MCDIVITT ELEMENTARY PTA CALENDAR

SEPTEMBER

6 KG Orientation/Ices 3:30-4:15 pm
6-7 Welcome Sign Photo Op
7 First Day of School
8 PTA Teacher + Staff Welcome Luncheon
11-22 Spirit Wear Sold Online (2x/year)
13 Back to School Social at Geick 4-6pm
20 School Store (items under \$5)
25 No School
26 Fall Fundraiser Assembly in school
27 World's Finest Chocolate pickup 3-4/6-8
27 Open House 6-8pm

OCTOBER

2 PTA Custodian Appreciation Day
2 **PTA Meeting** + Class Volunteer Mtg 7pm
7 Fall Clothing Drive 10-2pm
9 Early Dismissal 1:15pm (lunch served)
10 Spirit Night @iHop 4-9pm
12 Fall Picture Day (info from school)
16-27 Thanksgiving Pie Fundraiser
18-20 Fall Book Fair (in school)
19 STEM Night 6:30-8pm (in person)
22 SEPTA Trunk or Treat 12:30-4pm
25 School Store (items under \$5)
31 PTA Pumpkin Patch 9am (in school)
31 Halloween Parade 2pm (weather pend)
31 Halloween Class Party 2:15-3pm

NOVEMBER

1 Staff Appreciation Coffee Bar
1 Trimester 1 Progress Reports
7 No School
9-10 No School
13 **PTA Meeting** 7pm
15 School Store (items under \$5)
15 Educational Support Professionals Day
16 Fall Picture Retakes (info from school)
21 Thanksgiving Pie Pick Up 4-6pm Door 5
22 Early Dismissal 1:15pm
23-24 No School
28-30 Early Dismissal 1:15pm/Conferences
30 Student Holiday Shoppe (in school)

DECEMBER

1 Student Holiday Shoppe (in school)
2 Family Holiday Shop 9-12pm (Door 5)
4 **PTA Meeting** 7pm
22 5th Grade Holiday Party 9:30-11am
22 Holiday Class Party (K-4) 10:15-11am
22 Early Dismissal 1:15pm (lunch served)
22 Trimester 1 Report Cards
25-29 No School (Winter Break)

*No School Store (Holiday Shoppe instead)

JANUARY

1 No School
15 No School
17 School Store (items under \$5)
18 Early Dismissal 1:15pm (lunch served)

TBD Spirit Night Pizza
TBD Law Enforcement Appreciation Day
TBD Crossing Guard Appreciation Day
*No PTA Meeting this month

FEBRUARY

5 **Virtual PTA Meeting** 7pm
9 February Folly Dance 6:30-8:30pm
12 Trimester 2 Progress Reports
19 No School
21 School Store (items under \$5)
28-29 Winter Book Fair (in school)

TBD School Counselor Appreciation Day
TBD Order Gertrude Hawk Chocolate
TBD Bus Driver Appreciation Day
TBD 5th Grade Talent Show Auditions 8am
TBD Yearbook Orders Begin (K-4 only)

MARCH

1 Winter Book Fair (in school)
4 **PTA Meeting** 7pm
4-8 Read-A-Thon for Read Across America
13 School Store (items under \$5)
14 Staff Appreciation Pi Day
22 Gertrude Hawk Pick Up 4-6pm Door 5
20 Early Dismissal 1:15pm (lunch served)
28 Early Dismissal 1:15pm (lunch served)
28 Trimester 2 Report Cards
29 No School
TBD Yearbook Orders Continue (K-4)
TBD 5th Grade Talent Show Rehearsal 8am
TBD 5th Grade Talent Show 2pm Families
TBD 5th Grade Field Trip: Medieval Times
TBD 5th Grade Yearbook Info Due
TBD Spirit Night Wendy's

APRIL

1-5 No School (Spring Break)
10 Para Professionals Day
13 Spring Cleaning Clothing Drive
17 School Store (items under \$5)
22-23 No School
24 Administrative Professionals Day
TBD Yearbook Sales End (K-4 only)
TBD Spring Pictures (info from school)
TBD STEM Night 6:30-8pm
TBD 5th Grade Movie Night
TBD Coin Challenge
TBD Color Fun
TBD Final Spirit Wear Sale
*No PTA Meeting this month

MAY

1 Principal Appreciation Day
6 **PTA Meeting** + Board Elections 7pm
6-10 Teacher + Staff Appreciation Week
15 School Store (items under \$5)
16 Early Dismissal 1:15pm (lunch served)
16 Spirit Night Sundae's
24 Field Day
24 Early Dismissal 1:15pm (lunch served)
24 Trimester 3 Progress Reports
27 No School
29 Kindergarten Moving Up Ceremony
TBD Kids' Night Out
TBD School Nurse's Day
TBD Plant Sale Pre-Sale Order Pick Up
TBD Student Plant Sale (in school)
TBD Spirit Night @Sundaes 6-10pm

JUNE

4 No School
5-7 Spring Book Fair (in school)
11 Fifth Grade Day + Yearbook Signing
12 Fifth Grade Graduation 9:30
21 Class Party 10:15-11am
21 Last Day of School/Early Dismissal 1:15
21 Trimester 3 Report Cards (estimated)

TBD PTA Carnival, Food Trucks, Food Drive
TBD Carnival (Rain Date Only)
TBD PTA Dinner

This calendar is provided by the PTA to help families plan ahead. It will be updated monthly and emailed school-wide in the PTA packet. Stay informed with updates and reminders between emails in the PTA FB group. PTA Member Facebook Group: www.facebook.com/groups/mcdivittpta2023to2024
Become a PTA Member: <https://mcdivittpta.memberhub.com> (no requirements)
District and school info will be provided via email or website from the school.
District Website: <https://www.oldbridgeadmin.org>
District Calendar: [CLICK HERE for updated calendar as of 7/13](#)
The PTA can only answer questions pertaining to PTA activities or events.
PTA Email: McDivittPTA@McDivittPTA.com
School clubs, district groups and BOE dates are not featured on this calendar. Any dates shared with us will be posted on the PTA website + Facebook page. All dates and times are subject to change or cancellation.



MCDIVITT

S P I R I T W E A R



Order online from September 11th - 22nd
www.allclasspromotions.com/showrooms
(Select the McDivitt logo)



Show your school spirit every Friday and at school events!

Additional styles for children and adult sizes available at the link or QR code.
Solid navy logo t-shirts are offered year round at School Store and select events.
All other Spirit Wear is ordered online during the order window in the Fall or Spring.
Purchases are made to order and will return home in backpacks within 4 weeks.
Thank you for your school spirit and for supporting student programming with your purchase.

Sizing Questions:

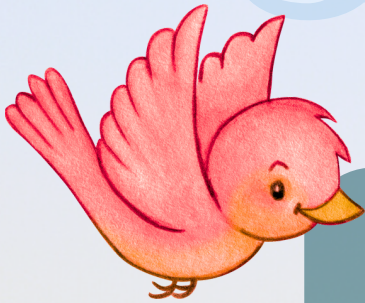
All Class Promotions Printing
(732) 234-6565
sales@allclasspromotions.com

Delivery Questions:

PTA Spirit Wear Committee Chair
Jessica Gwozdz
SpiritWear@McDivittPTA.com



BACK TO SCHOOL SOCIAL



SEPTEMBER

13

4pm -
6pm

Geick Park
4175 County Road 516
Old Bridge, NJ 07733

Join us for a fun afternoon where students can play at the park with classmates and friends and families can meet and reconnect.

The PTA will have a limited supply of McDivitt shirts and discount cards available for purchase along with complimentary water and snacks for students.

Our members are also happy to answer any questions you have on all things PTA or membership related.

Please note, this is not a drop-off event. A guardian must be present at all times.

PLEASE EMAIL QUESTIONS TO:
MCDIVITPTA@MCDIVITPTA.COM

We are so glad so many of you were able to make it and hope you and your child(ren) enjoyed some playtime and the chance to connect with McDivitt families.

A sincere thank you to all who volunteered to bring snacks and drinks. It is greatly appreciated!

McDIVITT ELEMENTARY

SCHOOL STORE

McDIVITT
STARS

The McDivitt PTA proudly provides a student-favorite learning experience at our monthly school store where we offer a small variety of low-cost school supplies and gadgets. Students with funds will visit during their scheduled time and select from a rotating assortment of affordable items ranging from \$.25 to \$5. Selections may include water-bottle stickers, erasers, pencils, pencil toppers, squishy toys, journals and more. It's great fun, promotes independence, decision making and budgeting and makes learning fun all while supporting student programming.

Parents and guardians can help at home by practicing counting money, going over any preferences you wish to communicate and by labeling a sealable wallet, pouch or ziploc bag with the student's name, teacher and amount enclosed. Small bills and change are appreciated and allow students practice with payment. Small reusable shopping bags are also welcomed.

STORE DATES

September 20
October 25
November 15
January 17
February 21
March 13
April 17
May 15

PTA Members Volunteer Opportunities:
<https://mcdivittpta.memberhub.com/w/Volunteer>
SignUp: <https://signup.com/go/spmpiSm>

Questions about School Store:
Victoria Novoa, Committee Chair
SchoolStore@McDivittPTA.com



WORLD'S FINEST[®] C H O C O L A T E

click or scan
to register



WE FUND COMMUNITIES™

September 26th - October 17th

Help support student activities at McDivitt Elementary by taking part in our Fall Fundraiser! Make a difference by selling 1 or more boxes of 60 assorted \$1 World's Finest Chocolate Bars. Students will earn prizes from varying levels for each box sold while helping our school!

- SEPTEMBER 26** Student sales kick off + safety information assembly in school
Participation slips sent home in folders (click or scan to register in advance)
Complete/return participation slip to school for 9/27 or as soon as possible
- SEPTEMBER 27** Purchase/pick up chocolate at McDivitt Door #39-40 from 3 - 4pm
Purchase/pick up chocolate at McDivitt Open House from 6 - 8pm
- OCTOBER 2** Purchase/pick up additional boxes at the PTA Meeting from 7 - 8 pm
- OCTOBER 17** Fundraiser ends. All money is due in full at this time.

Registration Form

https://docs.google.com/forms/d/1_6FuThy9Ul7fE4tDjbxPPum8pDDe6regs6uvlLS52qM/viewform?edit_requested=true
Optional paper copy sent home 9/26 with prize information.

Accepted Payments:

Zelle (Treasurer@McDivittPTA.com Memo: WFC + student name), **Cash** or **Check** (James McDivitt School PTA)

Participating families will have from 9/26- 10/17 to sell their checked out box(es) of chocolate for \$1 per bar. Payment for each box of chocolate (\$60) can be made at the time of pick up (preferred) or no later than 10/17/23. Chocolate may only be purchased by the box and each box must be paid for before more may be checked out.

Due to health code regulations, no chocolate (opened or unopened) may be returned.

Since there are no refunds, please use caution and do not leave in the sun, your car or near a heat source.

Students should never go door-to-door. We suggest selling to friends, family, co-workers or where permissible.

Allergy + Nutrition Info: https://worldsfinestchocolate.com/allergy-nutrition-info?mnu=true&portalUser=&store=&cclcl=en_US

Questions: VPFundraising@McDivittPTA.com

M C D I V I T T P T A

CLOTHING DRIVE

October 7 | 10am - 2pm

Help us turn your unwanted donations into activities for students!
We will receive a cash donation for every pound collected of the following items:

CLOTHING + SHOES

Mens, Womens + Children
Wearable Clothing
Any season, size + style
Sneakers, shoes + boots
Coats + Suits

ACCESSORIES

Handbags + Backpacks
Hats, Scarves + Gloves
Belts + Ties
Jewelry
Wallets

TOYS

Stuffed Animals

HOUSEHOLD ITEMS

Bed + Bath Linens
Bedding + Towels

NO electronics, CD's, books, outdoor toys or toys larger than 2 feet.

All clean reusable items are distributed to thrift shops in areas of need while avoiding landfills.

Anyone can help donate for McDivitt students so please ask your friends, family, colleagues and neighbors.



All items should be placed in tied bags and can be taken from your car as you pull up to McDivitt door #5.
If you need assistance with pick up, please email VPFundraising@McDIVITTPTA.com.

MCDIVITT ELEMENTARY PTA
Monthly Meetings
2023 - 2024

Hello McDivitt Community,

We're excited for another great school year and would love to share more on all of our terrific plans! Each one of our efforts will support every student at McDivitt. Whether you wish to join the PTA or not, all parents and guardians are welcome to attend our general membership meetings. You'll hear first hand from our Board of Directors, Committee Chairs, as well as our Principal, Mrs. Coletti on all topics relative to students, staff initiatives and the school. At the conclusion, there will be a Q&A. Often times those attending may be among the first to hear select information and in some cases, you may not hear it elsewhere so it truly is a great way to stay informed and learn pertinent details direct from the source.

This year, we will hold 5 in-person meetings at the school and 1 virtual meeting. All meeting dates are shared at the beginning of the school year and noted below to help with planning. These meetings will take place at McDivitt in the Intermediate Area between 3rd-5th grade hallways and are expected to last about an hour. For your added convenience, [free babysitting services](#) are also available so you are welcome to attend with your children. Those that are unable to attend, are welcome to review abbreviated meeting notes on the PTA website and are encouraged to submit questions in advance to McDivittPTA@McDivittPTA.com. We're happy to read these per your wishes either on your behalf or anonymously at the next meeting.

We look forward to meeting you and working together to help strengthen our community.

Sincerely,



Christine Rue
PTA President
President@McDivittPTA.com

2023 - 2024
PTA MEETINGS
7 PM

October 2, 2023 (Budget)
November 13, 2023
December 4, 2023
February 5, 2024 (Virtual)
March 4, 2024
May 6, 2024 (Elections)

PTA EMAIL

McDivittPTA@McDivittPTA.com



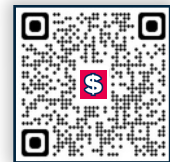
EASY WAY TO EARN CASH FOR OUR SCHOOL
NO CLIPPING NEEDED. JUST TAKE ONE PICTURE IN THE APP.

Scanning receipts for Box Tops is an easy way to make your shopping count for our school. Each one is worth 10¢ that accrued to **\$565.30** for student activities last year alone! This year our goal is to exceed **\$600**. Just shop as you would, open the app to snap a quick picture of your receipt and watch the app tally your qualifying purchases within seconds. Together we can make very small amounts add up to a big impact for our school.



1. DOWNLOAD THE APP

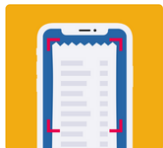
Click or Scan to download. Select **JAMES MCDIVITT ELEMENTARY SCHOOL**.



2. SHOP AS YOU NORMALLY WOULD

Box Tops products are automatically identified and credited from your picture.

Eligible Products: <https://www.boxtops4education.com/s/box-tops-products>



3. SCAN YOUR RECEIPT TO CHECK FOR BOX TOP PRODUCTS

Use the Box Tops app to submit your receipt **within 14 days** of purchase.

Digital or Paper receipts are eligible from in-store, app or online purchases.

FOR ANYONE NEW TO BOX TOPS PLEASE HELP US COLLECT AN ADDITIONAL \$5 BONUS CODE: DKHB2CQR

Click this link to download https://btfe.smart.link/c2jldifkw?referral_code=DKHB2CQR, select our school and once you scan your first receipt now thru 5/31/24 we will each receive an additional 25 Bonus Box Tops.

FOR THOSE ALREADY USING BOX TOPS, THANK YOU!

Please share your link with friends for an additional \$4 bonus for the school. Click on your icon in the top right corner, invite friends and share. Anyone can help - friends, family or even loved ones.

SEPT LEADERBOARD:
1st GRADE

Box Tops Committee Chair
Stacey Cameron
StaceyGCameron@gmail.com

RAISED THIS YEAR:
\$74.70



Route 9 Discount Cards are available for \$20

Save money at over 300 participating businesses throughout central NJ! With varying discounts ranging from 5-20% off, you are likely to save well over \$20. \$10 for every card purchased goes directly to McDivitt Elementary. No coupons to print, just show your card and save!

Participating Businesses:

<https://route9community.com/participating-businesses>



To order, send a marked envelope with payment in student folders, purchase at one of our PTA events or contact Committee Chair:

Theresa Mangam
Therza18@optonline.net

Payment Options:

ZELLE

Treasurer@McDivittPTA.com

Memo: RT 9 CARD/Student Name/Teacher

CASH

'RT 9 CARD' on envelope
w/Student's Name/Teacher

CHECK

Payable to: **'James McDivitt School PTA'**
Envelope labeled: RT 9 CARD w/Name/Teacher

Save on local goods, services and restaurants. Here are some of our favorite family-friendly places to save:

Bubba's
Friendly's
IHOP
KFC
Wendy's
Panini Bistro
Alternate Ending

Giusseppe's
McDonald's
Krispy Pizza
TGI Friday's
Round Pie
Rosalita's
Big Ed's BBQ

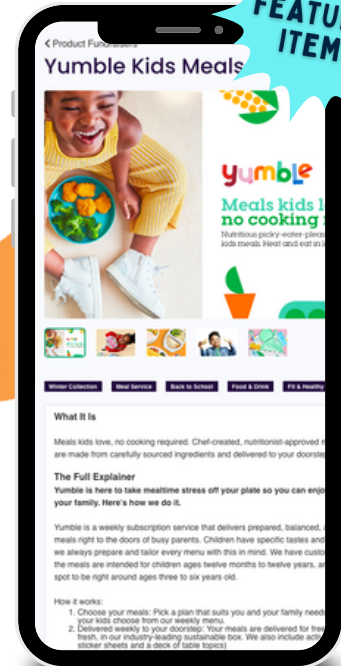
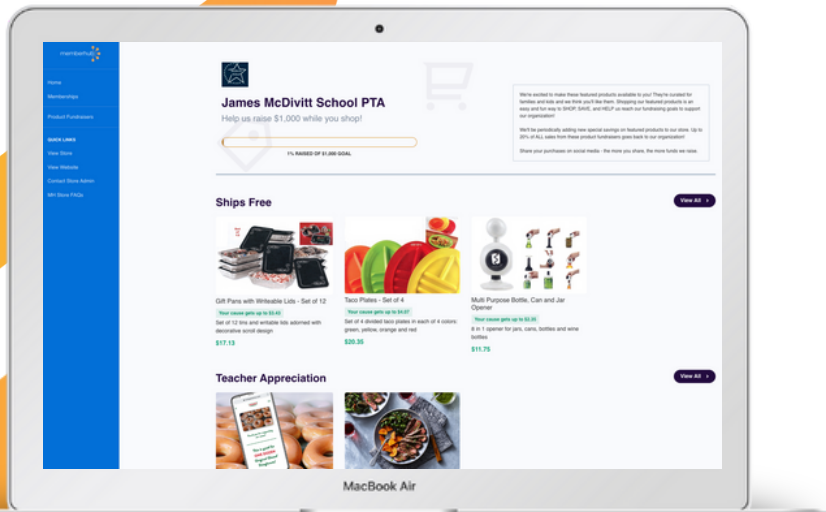
Chick-fil-A
Sundae's
Taco Bell
Grillestone
Old Bridge Pizza
Park Place Diner
Doughlicious

Cards are nonrefundable and cannot be replaced if lost. May not be combined with other discounts, sales or offers. At this time, there is no App or Key Tag available.

givebacks

FEATURED PRODUCTS

OVER 70
FEATURED
ITEMS



Memberhub Product Fundraisers are offers on family-oriented products, services and experiences featured in our PTA web-store. Prices and offerings are subject to change as new items are available or sell out. Each purchase earns a donation up to 20% back for our organization. Membership is not required to purchase so feel free to share on social media. Details for each offer are listed on the product page and are non-refundable. You will receive a receipt via email shortly after checking out.

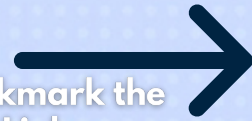
<https://mcdivittpta.memberhub.com/store/givebacks>

Support@MemberHub.com
McDivittPTA@McDivittPTA.com



Resources

Bookmark the
PTA Links page



Old Bridge Public Schools

www.oldbridgeadmin.org

4207 Route 516

Matawan, NJ 07747

(732) 566-1000

*District Information

*District Calendar

*Link to Parent Portal

Principal

Mrs. Coletti

LColetti@obps.org

(732) 360-4512

McDivitt PTA Website

<https://mcdivittpta.memberhub.com>

*Become a Member (\$10 for 1/\$15 for 2)

*Event + Fundraising Information

*Reference Monthly Packets

*Volunteer Information

*Staff Spotlights + Gifting Ideas

Old Bridge Public Schools App

Search 'Old Bridge Public Schools' in store

*All District + School Information in one place

Realtime App

Search 'Realtime Link for Parents' in store

*Set notifications from the Parent Portal

Secretary

Mrs. Pulaski

TPulaski@obps.org

(732) 360-4512

Secretarial Assistant

Mrs. Bradfield

KBradfield@obps.org

(732) 360-4512

McDivitt PTA Public Facebook Page

<https://www.facebook.com/james.mcdivitt.524>

*Favorite our public Facebook page

*No Membership required

* Limited posts

James McDivitt Elementary School

www.oldbridgeadmin.org/o/jmes

1 Manny Martin Way

Old Bridge, NJ 08857

(732) 360-4512

*Purple boxes link to the Backpack

*Purple boxes link to the Parent Portal

*Purple boxes link to the PTA website

Nurse's Office

Mrs. Gonzalez RN

KGonzalez@obps.org

Mrs. Toomey RN

SToomey@obps.org

(732) 360-4511

(732) 316-0218 Fax

Report Absence to:

McDivittAttendance@obps.org

McDivitt PTA Private Facebook Group

McDivitt PTA 2023-2024

www.facebook.com/groups/mcdivittpta

[2023to2024](https://www.facebook.com/groups/mcdivittpta)

*Must be a Paid Member to Join

*Community Discussion

*Event Reminders

*Full Access

Parent Portal

www.fridayparentportal.com/oldbridge

Portal Code: 3845(6 digit student ID)

Student ID:

Student Email:

*Student Specific Information

*Grades + Progress Reports

*Transportation Assignments

Guidance Counselor

Mrs. Bloom

PBloom@obps.org

(732) 360-4516

Pick Up Patrol

<https://www.pickuppatrol.net>

Special Education PTA of Old Bridge (Septa)

SEPTA Hub:

<https://linktr.ee/septaoldbridgenj>

Transportation Department

(732) 360-4502

Before + After Care Program

(732) 721-5600 ext. 2395

Technology Resources

obtechs@obps.org

Breakfast + Lunch Programs

(732) 290-3900 x3935

Menus:

<https://oldbridgeadmin.nutrislice.com/menus/mcdivitt-elementary>

Menu App:

<https://apps.apple.com/us/app/school-lunch-by-nutrislice/id567183091?ign-mpt=uo%3D4>

Special Education Parent Advisory Group (Sepag)

Sepag Website:

<http://obsepag.org>

Provided by the McDivitt PTA.
Updates made in the monthly PTA Packet.
For convenience, you can click on all links or numbers.
All of the information above can be found @ oldbridgeadmin.org.
Communications@McDivittPTA.com for suggested additions or edits.

PTA RESOURCES

PTA WEBSITE	HTTPS://MCDIVITTPTA.MEMBERHUB.COM
PTA EMAIL	McDIVITTPTA@McDIVITTPTA.COM
PUBLIC FACEBOOK PAGE	HTTPS://WWW.FACEBOOK.COM/JAMES.MCDIVITT.52
MEMBER-ONLY FACEBOOK GROUP	HTTPS://WWW.FACEBOOK.COM/GROUPS/MCDIVITTPTA2023TO2024
MEMBER-ONLY VOLUNTEER SIGNUP	HTTPS://SIGNUP.COM/GO/SPMPISM

BOARD OF DIRECTORS

PRESIDENT	CHRISTINE RUE	PRESIDENT@McDIVITTPTA.COM
TREASURER	KELLY GILL	TREASURER@McDIVITTPTA.COM
VP MEMBERSHIP + VOLUNTEERS	KAREN PATON	VPMEMBERSHIP@McDIVITTPTA.COM VOLUNTEERS@McDIVITTPTA.COM
VP FUNDRAISING	DEE SZWEDO	VPFUNDRAISING@McDIVITTPTA.COM
VP STUDENT ACTIVITIES	MICHELE DIPPOLD	VPSTUDENTACTIVITIES@McDIVITTPTA.COM
SECRETARY	JENNIFER DePALMA	SECRETARY@McDIVITTPTA.COM
COMMUNICATIONS	ANDREA HANLEY	COMMUNICATIONS@McDIVITTPTA.COM

COMMITTEE CHAIRS

5TH GRADE EVENTS	KAREN PATON + MICHELE DIPPOLD	McDIVITTPTA@McDIVITTPTA.COM
BOOK FAIR	MANSI SHAH	BOOKFAIR@McDIVITTPTA.COM
BOX TOPS	STACEY CAMERON	McDIVITTPTA@McDIVITTPTA.COM
CARNIVAL	WINNIE BURKE	CARNIVAL@McDIVITTPTA.COM
CLASS VOLUNTEERS	WINNIE BURKE	CLASSVOLUNTEERS@McDIVITTPTA.COM
FEBRUARY FOLLY DANCE	MICHELE DIPPOLD + JENNIFER DEPALMA	VPSTUDENTACTIVITIES@McDIVITTPTA.COM
FINANCIAL REVIEW	TBD	VOLUNTEERS@McDIVITTPTA.COM
FOOD DRIVE	JESSICA DiMINO + LAURA CHAPMAN	MCDIVITTPTA@MCDIVITTPTA.COM
KIDS' NIGHT OUT	AMANDA ECKENRODE	KIDSNIGHTOUT@McDIVITTPTA.COM
HOLIDAY SHOPPE	TBD	VPFUNDRAISING@McDIVITTPTA.COM
INCLUSION	TBD	McDIVITTPTA@McDIVITTPTA.COM
NOMINATING COMMITTEE	KAREN PATON	VOLUNTEERS@McDIVITTPTA.COM
OUTDOOR FUN	KATHERINE BACH + ELENA ZACCARIO	MCDIVITTPTA@MCDIVITTPTA.COM
PLANT SALE	WINNIE BURKE + ELENA ZACCARIO	PLANTSALE@McDIVITTPTA.COM
ROUTE 9 DISCOUNT CARDS	THERESA MANGAM	MCDIVITTPTA@MCDIVITTPTA.COM
SCHOOL STORE	VICTORIA NOVOA	SCHOOLSTORE@McDIVITTPTA.COM
SPIRIT WEAR	JESSICA GWOZDZ	SPIRITWEAR@McDIVITTPTA.COM
SPONSORSHIP + GRANTS	ANDREA HANLEY	McDIVITTPTA@McDIVITTPTA.COM
STEM NIGHT	JULIANNE PASSERO + MICHAEL PASSERO	STEM@McDIVITTPTA.COM
WELCOME	TBD	MCDIVITTPTA@MCDIVITTPTA.COM
YEARBOOK	CHRISTINE ADAMS + JENNIFER DEPALMA	YEARBOOK@McDIVITTPTA.COM



MCDIVITT ELEMENTARY

Parent Teacher
ASSOCIATION

ABOUT US

The McDivitt PTA helps administration to create the best possible learning environment for each and every student by providing experiences and opportunities to connect and grow. Our inclusive efforts are only made possible by community participation in any way that is comfortable for your family. We will never require volunteering, fundraising or participation, though it is always appreciated.

WHAT WE DO

We'll host enriching and fun educational programs and events while strengthening the McDivitt community through improved connection and communication. From informational assemblies, to a school dance, restaurant nights and more, we provide ample opportunities to be as involved as you wish and welcome your family when and if you decide to attend an event. All families can help with every spirit wear shirt you purchase, school store your child(ren) shop from or when scanning your grocery receipt for Box Tops rewards. Each effort helps to support all McDivitt Stars!

WHY JOIN THE PTA

Your membership directly represents student and community engagement. It allows everyone to have a seat at the table and a voice, allowing us to advocate and provide for each and every student. The PTA helps to link families to important district, school, staff, club, PTA and community info making it convenient for families. We recommend the Family Membership that provides membership for any 2 family members (parents, guardians, grandparents, aunts, uncles or loved ones) for \$15. If you wish to purchase an individual membership, you may for \$10. Please consider joining our award-winning PTA with over 300+ members last year!



Purchase a 2023-2024 McDivitt PTA Membership
<https://mcdivittpta.memberhub.com/store>



McDivitt PTA Private Member-Only Facebook Group
www.facebook.com/groups/mcdivittpta2023to2024

ONE - TIME FEE. ZERO REQUIREMENTS. STAY INFORMED. ALL STUDENTS BENEFIT.

PTA WEBSITE: <https://mcdivittpta.memberhub.com> | **PTA EMAIL:** McDivittPTA@McDivittPTA.com