

ROADMAP



TO

RECOVERY

PUTNAM COUNTY SCHOOLS COVID-19 INFORMATION

The U.S. Department of Health and Human Services announced the expiration/end of the COVID-19 Public Health Emergency on May 11, 2023.

UPDATED: FEBRUARY 2024

Updated Protocols

"DON'T FEEL WELL? STAY HOME" WVDE RESOURCE DOCUMENT

Updated COVID-19 Protocols

August 2023

DON'T FEEL WELL? STAY HOME

If you have the symptoms below,
let your family and teachers know.



COUGH



FEVER



**SORE
THROAT**



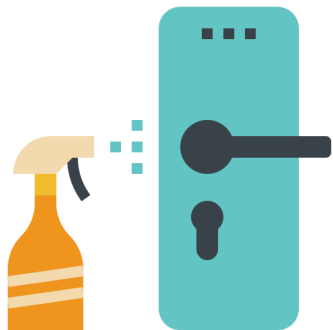
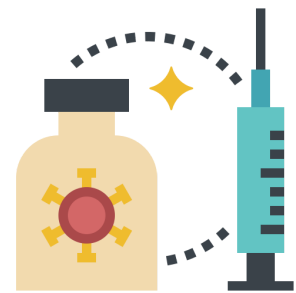
KEY MITIGATION MEASURES FOR SCHOOLS

Including Extracurricular Activities

Whether in the classroom or participating in extracurricular activities, local administrators and leaders should follow the mitigations below.

The following practices and measures from the WVDE are essential to guard against COVID-19 and the spread of other infections, such as the flu and the common cold. Students who do not feel well with signs and/or symptoms such as cough, fever, or sore throat should stay home from school. Students who exhibit signs and/or symptoms of illness at school will be sent home. *It is recommended that families refer to the student's primary care provider and/or pediatrician for medical diagnosis, treatment, and/or guidance.*

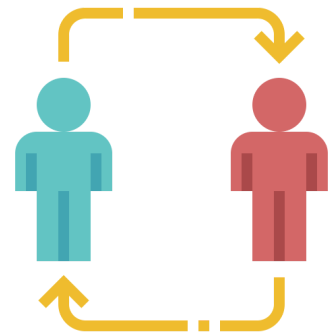
The most effective mitigation strategy is the vaccination for those eligible to receive it.



**Cleaning &
Disinfecting**



**Hand Hygiene &
Coughing/Sneezing
Etiquette**



**Monitor School
Positivity Rates**



BOARD OF EDUCATION

G. Robert Cunningham, *President*

Bruce Knell, *Vice President*

Brad Hodges, *Member*

Wade Neal, *Member*

Christian Wells, *Member*

John G. Hudson, *Superintendent*

PLEASE NOTE: Guidance in this document is subject to change as additional information about the spread and prevention of COVID-19 is known. In addition, directives may evolve as they are received from Governor Jim Justice, public health officials, and the West Virginia Department of Education (WVDE). Therefore, all West Virginia County Boards of Education must be prepared to alter their guidance to comply with any new directives to best safeguard student health and learning needs.