



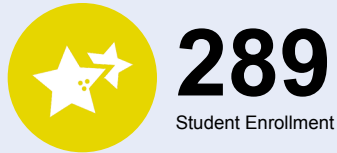
OREGON AT-A-GLANCE SCHOOL PROFILE

Island City Elementary School

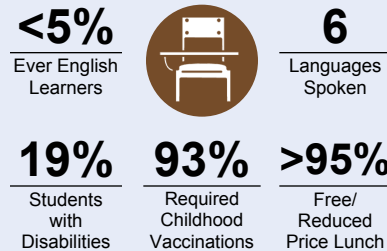
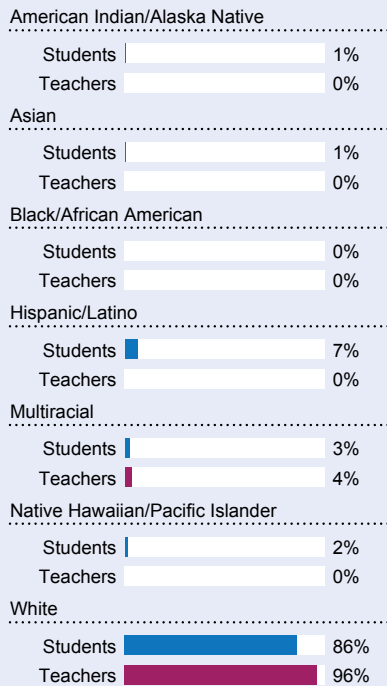
PRINCIPAL: Brett Smith | GRADES: K-5 | 10201 W 4th St, Island City 97850 | 541-663-3270



Students We Serve



DEMOGRAPHICS

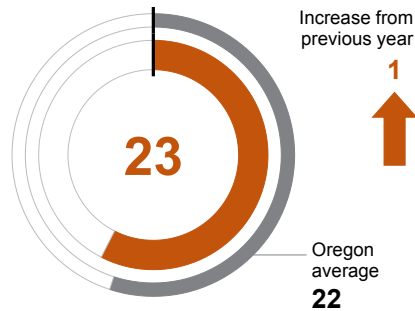


*<10 students or data unavailable

School Environment

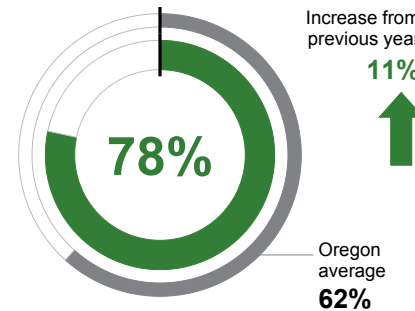
CLASS SIZE

Median class size.



REGULAR ATTENDERS

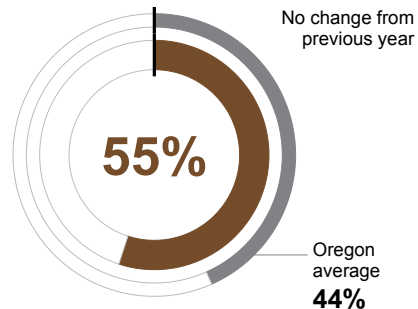
Students who attended more than 90% of their enrolled school days.



Academic Success

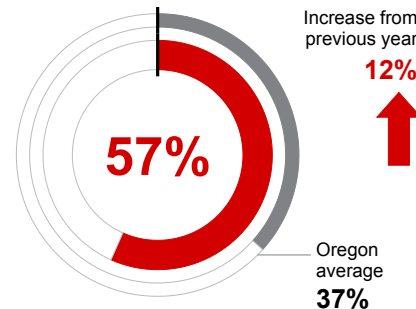
ENGLISH LANGUAGE ARTS

Students meeting state grade-level expectations.



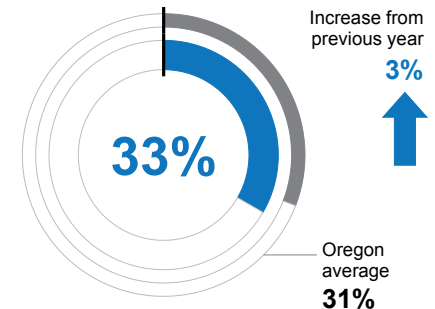
MATHEMATICS

Students meeting state grade-level expectations.



SCIENCE

Students meeting state grade-level expectations.



School Goals

Island City Elementary will establish clear school expectations, respond to inappropriate behavior, acknowledge appropriate behavior and enhance student engagement in the school experience through consistent PBIS structure and implementation.

Island City Elementary will dedicate 10-15 minutes of daily instruction in phonics and vocabulary across all grade levels.

Island City Elementary will dedicate 10-15 minutes of writing instructional time to sentence structure as measured by administrator observation.

State Goals

The Oregon Department of Education is partnering with school districts and local communities to ensure a 90% on-time, four year graduation rate by 2027. To progress toward this goal, the state will prioritize efforts to improve attendance, provide a well-rounded education, invest in implementing culturally responsive practices, and promote continuous improvement to close opportunity and achievement gaps for historically and currently underserved students.

Safe & Welcoming Environment

Island City Elementary is dedicated to fostering an educational environment which will enable each child to experience daily success and achievement at their ability level. We do this through a robust intervention schedule and are a Title 1 school, delivering interventions in math, reading and behavior. We have implemented a student success room, counseling program, PBIS and other trauma informed strategies to benefit students and staff.



OREGON AT-A-GLANCE SCHOOL PROFILE CONTINUED

Island City Elementary School



2022-23

Outcomes

Our Staff (rounded FTE)



20

Teachers



8

Educational assistants



1

Counselors/
Psychologists/
Social Workers



86%

Average teacher retention rate over the past three years



67%

% of licensed teachers with more than 3 years of experience



Yes

Same principal in the last 3 years

REGULAR ATTENDERS

American Indian/Alaska Native	<10 students or data unavailable	
Asian	<10 students or data unavailable	
Black/African American	<10 students or data unavailable	
Hispanic/Latino	95%	
Multiracial	90%	
Native Hawaiian/Pacific Islander	<10 students or data unavailable	
White	76%	
Free/Reduced Price Lunch	78%	
Ever English Learner	92%	
Students with Disabilities	67%	
Migrant	<10 students or data unavailable	
Homeless	<10 students or data unavailable	
Students in Foster Care	<10 students or data unavailable	
Military Connected	<10 students or data unavailable	
Talented and Gifted	<10 students or data unavailable	
Female	78%	
Male	78%	
Non-Binary	<10 students or data unavailable	

ENGLISH LANGUAGE ARTS

<10 students or data unavailable	
<10 students or data unavailable	
<10 students or data unavailable	
<10 students or data unavailable	
<10 students or data unavailable	
<10 students or data unavailable	
<10 students or data unavailable	
56%	
55%	
<10 students or data unavailable	
23%	
<10 students or data unavailable	
<10 students or data unavailable	
<10 students or data unavailable	
<10 students or data unavailable	
<10 students or data unavailable	
<10 students or data unavailable	
64%	
48%	
<10 students or data unavailable	

MATHEMATICS

<10 students or data unavailable
<10 students or data unavailable
<10 students or data unavailable
<10 students or data unavailable
<10 students or data unavailable
<10 students or data unavailable
<10 students or data unavailable
58%
57%
<10 students or data unavailable
29%
<10 students or data unavailable
<10 students or data unavailable
<10 students or data unavailable
<10 students or data unavailable
<10 students or data unavailable
<10 students or data unavailable
60%
54%
<10 students or data unavailable

About Our School

BULLYING, HARASSMENT, AND SAFETY POLICIES

At Island City we help students navigate peer conflicts and unsafe behaviors through a variety of trauma-informed practices including, but not limited to, Conscious Discipline, Collaborative problem solving, Kelso's choices and Zones of Regulation. We encourage safe choices and positive peer relationships through regular character education instruction. Behavior intervention assistants, counselors, administration, staff and school resource officers help build positive relationships with our students and encourage safe and positive choices.

EXTRACURRICULAR ACTIVITIES

Island City promotes extracurricular activities for students as a way to build community and have fun.

- After school music activities
- After school sports (grades 4-5)
 - Volleyball
 - Basketball
- Grade level field trips
- Community service projects

PARENT ENGAGEMENT

We highly encourage families to engage with Island City staff to help their student have the best experience possible. We will continue to engage parent through:

- School-Wide Title nights
- Parent meetings for student learning
- Island City PTA
- School websites
- School messenger
- School newsletters
- Regular class to home communication

We welcome volunteers and visitors to our school and would love to see you helping out our Rams!

COMMUNITY ENGAGEMENT

Island City recognizes the great community we have and their desire to support our students. Opportunities like our sport programs and field trips would not be possible without community support. Additionally, our donors help immensely with students that struggle with homelessness, hunger and other challenges. We continue to find ways to engage the community through service projects, food drives, newsletters, website updates, and messenger calls. Teachers and administration welcome the community to participate and attend regular events and experience the great things our staff and students are doing.