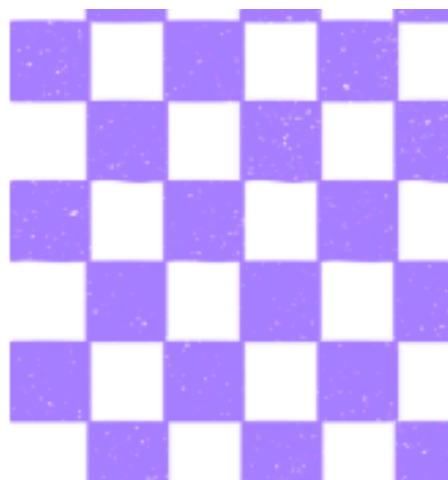


# "AWAY DURING THE DAY"

## STATE LAW

- All personal communication devices must be turned off and in backpacks, completely out of sight, during the instructional day. Devices include but are not limited to cell phones, smart watches, tablets, paging devices, headphones/earbuds, and alternative devices.
- Students are only permitted to use school-issued devices during the instructional day.
- Personal devices are not allowed unless approval has been granted by the school administration for specific circumstances.
- Personal communication devices are prohibited in all areas on campus during the instructional day, including cafeterias, hallways, and restrooms.
- Personal devices should not be out for any reason during the instructional day.
- If a student needs to make an emergency call during the instructional day they are to come to the front office, where they will be allowed to make the call.



### PROHIBITED PERSONAL COMMUNICATION DEVICES



Cell Phones



Smart Watches



Tablets



Paging Devices



Alternative Devices



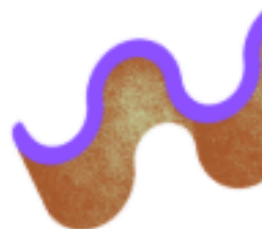
Headphones & Earbuds

Any digital device capable of sending or receiving wireless communication.

## INSTRUCTIONAL DAY DEFINITION

The instructional day is defined as the time from the first bell to the last bell (7:55-3:45), and includes all scheduled class periods, passing periods, and lunch.

For safety reasons, the district will permit students to possess personal cellular devices. However, these devices must remain powered off and not visible during the instructional day.



## VIOLATIONS

- First offense: Warning, parent pick up at the front office.
- Second offense: \$5 fine and parent pick up at the front office.
- 3<sup>rd</sup> offense: \$10 fine and parent pick up at the front office.
- Following offenses \$5 fine increase and pick up at the front office.