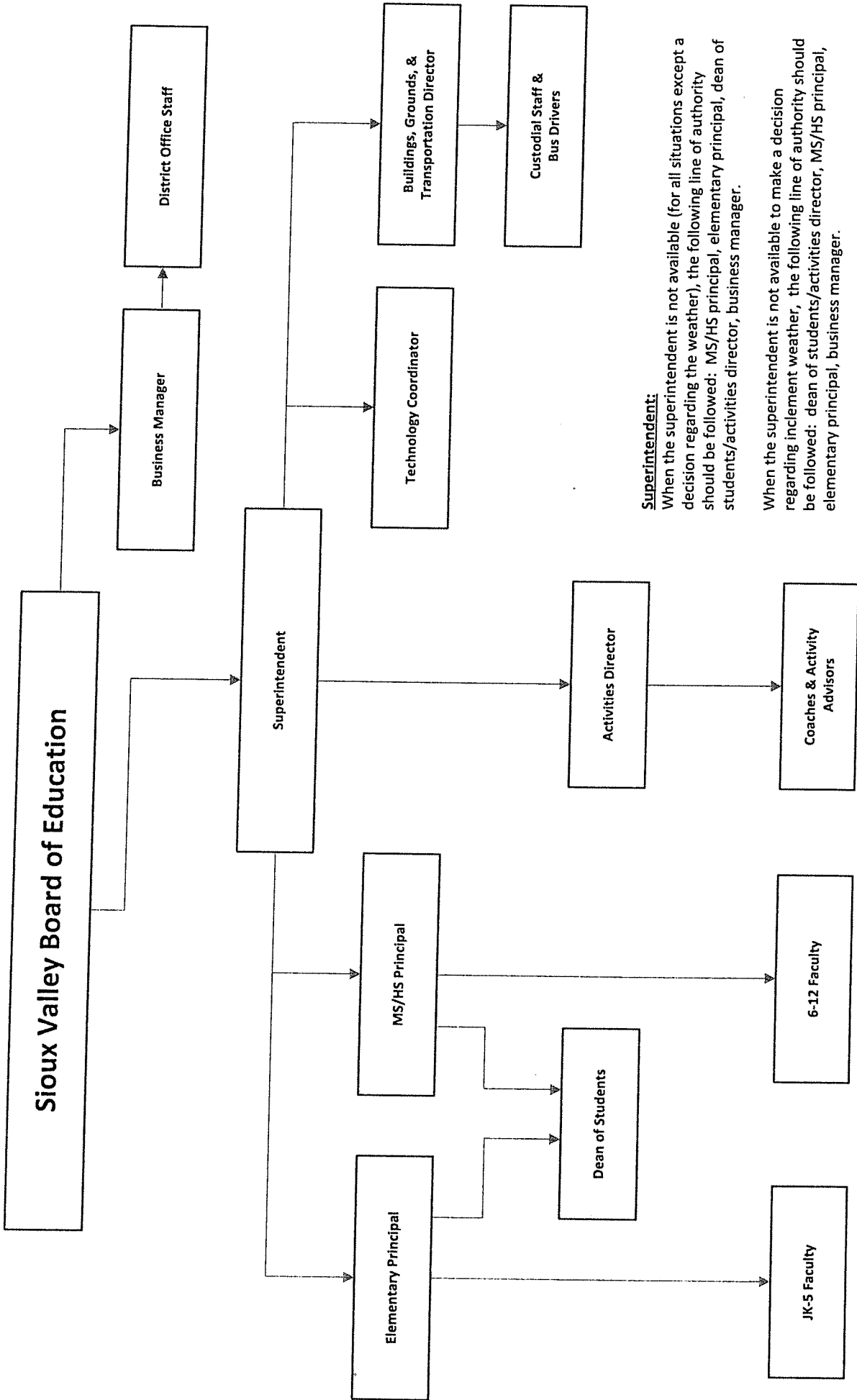


LINE OF AUTHORITY



Superintendent:

When the superintendent is not available (for all situations except a decision regarding the weather), the following line of authority should be followed: MS/HS principal, elementary principal, dean of students/activities director, business manager.

When the superintendent is not available to make a decision regarding inclement weather, the following line of authority should be followed:

dean of students/activities director, MS/HS principal, elementary principal, business manager.

Building Principals:

The principals are each responsible for their own building and if they are not available, the following line of authority should be followed: dean of students/activities director, other building principal, superintendent, business manager.