

SUTHERLIN SCHOOL DISTRICT #130

531 E. Central Avenue
Sutherlin, Oregon 97479
(541) 459-2228 telephone
(541) 459-2484 fax

Miguel A. Carrillo
Technology Coordinator
Miguel.Carrillo@sutherlin.k12.or.us

Request for Proposal – Enterprise Wireless Infrastructure Sutherlin School District E-Rate Funding Year 2023-2024

Description of Project

Sutherlin School District Public Schools is requesting proposals for the expansion of a wireless infrastructure at 1 of the district schools. Building floor plan is attached (See Appendix B). Classroom access points (AP) capacity is estimated at 25-100 IP requests to the network. This project will augment the existing wireless infrastructure that is currently managed via a Cisco Systems wireless controller (Model AIR-CT5508) and integrate into the existing network infrastructure.

Sutherlin School District Public Schools is also requesting bids for a Cisco Wireless Lan Controller that will integrate into our existing network infrastructure we have a total of 110 Cisco Wireless Access Points that will need to be licensed.

All bidding vendors must be E-Rate eligible and file an FCC Form 499A to provide the services requested and provide their SPIN number as part of this RFP.

Cost of Proposals

Expenses incurred in the preparation of proposals in response this RFP are the sole responsibility of the vendor.

E-Rate and Dependence on Schools and Libraries Division (SLD)'s Funding Approval

Vendors shall be responsible for all parts, labor, shipping, and applicable taxes. Prices must be held firm for the duration of the E-Rate year 2023-2024 and/or until all work associated with the project is complete. Sutherlin School District expects each vendor to make themselves thoroughly familiar with any rules and regulations regarding the E-Rate program. All contracts entered as a result of this RFP will be contingent upon SLD's funding approval. The winning bidder will be responsible for invoicing SLD for the funded amount. The maximum amount that Sutherlin School District will be liable for is the pre-discount amount minus the funded amount as shown on the form 471. In the event of questions during the E-Rate audit process, the winning bidder is expected to reply within 48 hours to questions associated with their proposal.

Right of Rejection

Sutherlin School District reserves the right to deny any or all proposals associated with this RFP, even with SLD's funding approval. Sutherlin School District reserves the right to accept the proposal solely dependent upon SLD approval. In addition, Sutherlin School District reserves the right to fund (and proceed with the project or purchase) or not to fund regardless of SLD approval.

Existing Network Infrastructure

The Sutherlin School District wide area network has a hybrid network infrastructure which includes Fiber and copper connections. The Ethernet backbone of the High School consists of 10,000Mbps connections. The Edge switches 100/1000 managed Cisco 2960X and unmanaged switches. Current switching infrastructure supports PoE to endpoints. Core switches are Cisco 3650 running EIGRP routing.

Product Specifications

Wireless and Ethernet products must meet the requirements provided below and must be in new condition and must carry the original manufacture warranty. No refurbished equipment will be accepted.

Wireless Access Points (See appendix A for quantity)

- Access Point must be able to be managed by existing Wireless Controller (Cisco 5508).
- Access Points must support dual concurrent, dual-band 802.11ax/ac/ah/bgn connectivity.
- Access Points must support VLAN segmentation.
- Access Points must support 802.11ax operating in preferred 3x4 MIMO with 3 spatial streams.
- Access Points must support 802.3bt PoE
- Access Point should provide the option for an external power adapter.
- Access Points should be available with internal or external antenna options.
- Access Points must support LWAP mode of operation.
- All Access Point proposals should include necessary controller licenses.
- All Access Point proposals should include necessary Ethernet Switching equipment.

Ethernet Switches (See appendix A for quantity)

- Switch must support 802.3af, 802.3at and 802.3bt PoE and provide a least 740w of total PoE.
- Provide 100/1000 Connectivity on all ports plus a minimum of 2 1000/10,000 Gbs SFP based uplink ports. Provision 10Gbs SFP where necessary.
- Switches should support stacking and proposal shall include all stacking models and cables. The switches must be able to be stacked with existing models where appropriate.
- Must support 802.1p class of service (CoS) and Differentiated Services Code Point (DSCP) classification, with marking and reclassification on a per-packet basis by source and destination. IP Address, MAC Address, or Layer 4 TCP/UDP port number.
- Support cross stack QoS.
- Support MAC-based VLAN Assignment.
- Support Multi-domain Authentication.
- Support Bridge Protocol Data Unit (BPDU) guard.
- Support Spanning Tree Root Guard.
- Must provide at least 216 Gbps switching bandwidth or better.
- Support at least 107 Mpps switching performance or better.
- Support IEEE 802.1s/w Rapid Spanning Tree protocol (RSTP) and Multiple Spanning Tree Protocol (MSTP).

Wireless Lan Controller (See appendix A for quantity)

- Support for up to 150 wireless access points
- Support VLANs
- Wi-Fi 6 (802.11ax,ac,b,g,n), WPA3 and Enhanced Open support
- Capable of throughput of up to 12-gig non-encrypted, up to 5-gig encrypted
- Ports required:
 - (4) 10/100/1000 gig Base-T ports
 - (2) SFP+ ports
 - (1) Out of band management port
- Cloud-Based Network Management
- 1U rack size to fit available rack space.
- Power Cables
- Vendor should specify if rack-mounting hardware is included.

- 5-Year Management License

UPS Units (See appendix A for quantity)

- Enough power to support switches up to 2 hours in case of outage.
- Gigabit Network Card for network management Included.
- Network manageable via manufacturer management tool.
- Rack mounted 2U configuration to fit available rack space.

Contingencies

This RFP should not be considered a contract to purchase goods or services but is a Request for Proposal in accordance with the Terms and Conditions herein and will not necessarily give rise to a contract. However, RFP responses should be as detailed and complete as possible to facilitate the information of a contract based on the RFP response(s) that are pursued should Sutherlin School District decide to do so. Proposals stating that pricing is valid dependent upon availability and or subject to prior sale will be considered as nonresponsive. Vendors must submit sealed RFP responses by the due date and time as specified herein. Electronic submissions will be accepted if created in PDF format and e-mailed to Miguel.Carrillo@sutherlin.k12.or.us by January 6th, 2023. Date and time stamp of receiving computer will govern all e-mails. Vendors will be considered nonresponsive if the above requirements are not submitted as requested. Sutherlin School District Public schools has the right to reject all submitted proposals and resubmit for new proposals through a revised RFP.

Vendor Questions and Clarifications

Questions should be addressed, no later than December 31st, 2022.

To: Miguel Carrillo | Email: Miguel.Carrillo@sutherlin.k12.or.us

Appendix A

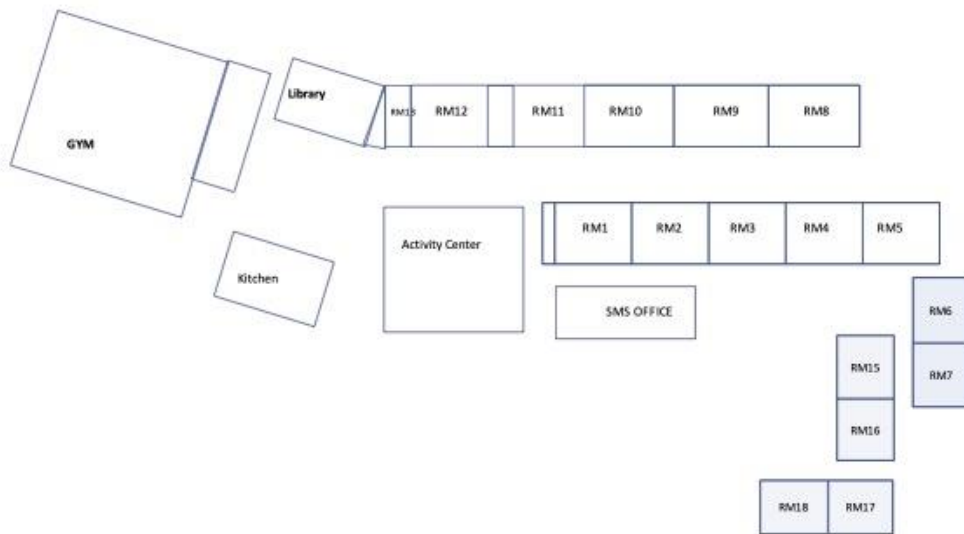
QTY	TYPE	MODEL
1	Wireless Lan Controller	CISCO
25	Access Points	CISCO
4	Network Switch 48 Port (Stack kit)	CISCO
2	Network Switch 24 Port (Stack kit)	CISCO
2	APC Smart UPS SRT5KRMXLT-5KTF or equivalent	
2	APC Smart UPS SRT1500RMXLA-NC 1.5 kVA	

Appendix B

Location of Building:

Sutherlin Middle School

649 E. 4th Street, Sutherlin OR. 97479



Appendix B
Evaluation Rubric
Sutherlin School District Public Schools
E-Rate: Category 2 Wireless System

- 1. Cost of eligible equipment and/or eligible maintenance..... 40 points**
 Cost of Equipment will be released at time of proposal opening. Points will be awarded during the evaluation of the proposals(s).
- 2. Compatibility with currently owned district devices..... 30 points**
 Compatibility is very important. Points will be awarded during the evaluation of the proposal(s) and determination of compatibility with existing equipment will be done at the same time. Zero (0) points will be awarded for non-compatible devices and thirty (30) points will be awarded for full 100% compatibility.
- 3. Features included..... 10 points**
 All documented features of the device in the RFP will be evaluated and points award as such. Points will not be awarded for features that are not included in the cost of the device as presented in the RFP.
- 4. Support of hardware..... 10 points**
 Technical Support will be contacted and will be evaluated on its technical knowledge, English as the primary language, and ease of use.
- 5. Vendor Experience, dealing with School Districts..... 10 points**
 Provide School References

Sutherlin School District E-Rate Proposal Assessment Worksheet

Project or Service Description: Funding Year 23
 Category 2: Wireless System

Selection Criteria	Weight*	Vendor 1		Vendor 2		Vendor 3		Vendor 4	
		Raw Score**	Weighted Score***	Raw Score	Weighted Score	Raw Score	Weighted Score	Raw Score	Weighted Score
Cost	40 points								
Compatibility with current equipment	30 points								
Features included	10 points								
Support of hardware	10 points								
Vendor Experience, dealing with School Districts.	10 points								
Total	100 points								

Overall Ranking

Vendor Selected
 Approved By:
 Title:
 Date:

Bid Assessment Comments, if needed:

Notes:
 * Points must add up to 100
 ** Evaluated on a scale of 1 to 5: 1=worst, 5=best
 *** Weight x Raw Score