

6th Grade

Home ↔ School Connection
Baker-Koonce Intermediate

Week 4 of 5th Six Weeks
March 18 – 22

THIS WEEK:

March 20

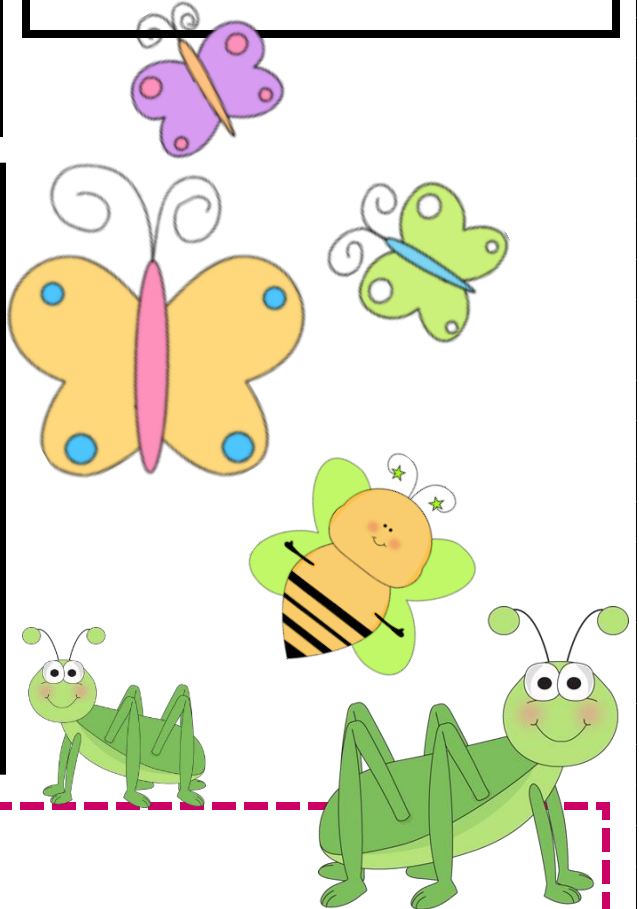
Progress Reports go home!

March 20

Spring Fundraiser
(Chocolate Bars)
Kicks Off!

March 22

Spring Picture Day!



READING / LANGUAGE ARTS:

6.5C – The student can make, correct, or confirm predictions using text features, characteristics of genre, and structures.

6.5F – The student can make inferences and use evidence to support understanding.

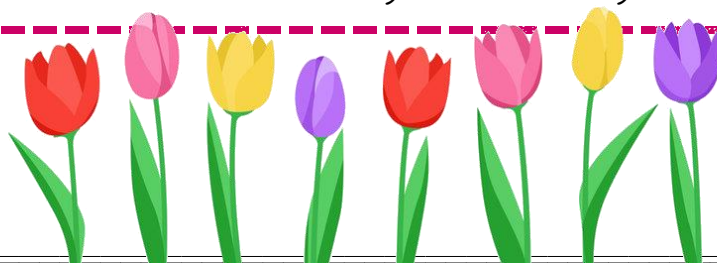
6.6C – The student can use text evidence to support an appropriate response.

6.6D – The student can paraphrase and summarize texts in ways that maintain meaning and logical order.

6.10B – The student can develop drafts into a focused, structured, and coherent piece of writing.

6.10C – The student can revise drafts for clarity, development, organization, style, word choice, and sentence variety.

6.10D – The student can edit drafts using standard English conventions.



hello



MATH:

6.12A/6.13A – The student can represent and explain data on a dot plot; represent and explain data on a stem-and-leaf plot; represent and explain data on a histogram; represent and explain data on box plot.

6.12B – The student can look at a graph of data and describe the center (median) and the spread (range) of the data.

6.12C – The student can take a list of numbers/data and determine the mean, median, range, and interquartile range.



SCIENCE:

6.2E - The student can analyze data to formulate reasonable explanations supported by the data and predict trends.

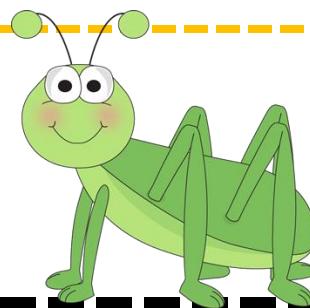
6.11B - The student understands the organization of our solar system and the relationships among the various bodies that comprise it.

SOCIAL STUDIES:

6.3D - The student can compare ways in which various societies organize the production of goods and services.

6.17A - The student can explain the relationship among religious ideas, philosophical ideas, and cultures.

6.18 - The student can explain how resources, economic factors, and political decisions affect the use of technology.



Taking GT
Nominations
through the
month of March!