

ADDENDUM NO. 3

Date February 18, 2025

Kelso School District

Coweeman Middle School Cladding Replacement

This addendum is being issued for clarification and / or revision of the Contract Documents as noted. This document is hereby made a part of the Contract Documents to the extent as though it was originally included herein.

Bidder shall notify all sub-bidders of this addendum, and shall acknowledge receipt of this addendum by inserting the above addendum number in the space provided on the bid response form prior to submitting bids. Failure to acknowledge receipt of any addendum may subject the bidder to disqualification.

The following are clarifications to the Contract Documents:

Item	Reference	Description
3.01	<i>Drawing Sheet R111</i>	Replace sheet with attached revised Sheet R111. Note the following changes: <ul style="list-style-type: none">• Altered layout of fiber cement panels to reduce the need for cutting panels to custom widths.• Added Addendum No. 3 revision identifier.
3.02	<i>Drawing Sheet R112</i>	Replace sheet with attached revised Sheet R112. Note the following changes: <ul style="list-style-type: none">• Altered layout of fiber cement panels to reduce the need for cutting panels to custom widths.• Added Addendum No. 3 revision identifier.
3.03	<i>Drawing Sheet R113</i>	Replace sheet with attached revised Sheet R113. Note the following changes: <ul style="list-style-type: none">• Altered layout of fiber cement panels to reduce the need for cutting panels to custom widths.• Added Addendum No. 3 revision identifier.
3.04	<i>Drawing Sheet R114</i>	Replace sheet with attached revised Sheet R114. Note the following changes: <ul style="list-style-type: none">• Altered layout of fiber cement panels to reduce the need for cutting panels to custom widths.• Added Addendum No. 3 revision identifier.

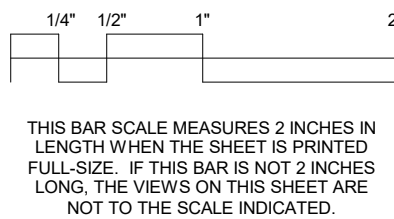
END OF ADDENDUM No. 3

PROFESSIONAL ROOF CONSULTANTS, INC.

KELSO SCHOOL DISTRICT
COWEEMAN MIDDLE SCHOOL
CLADDING REPLACEMENT

Sheet Title:
EXTERIOR ELEVATIONS - NEW

THESE DRAWINGS ARE INSTRUMENTS OF
SERVICE AND THE PROPERTY OF
PROFESSIONAL ROOF CONSULTANTS, INC.
UNAUTHORIZED REPRODUCTION IS
EXPRESSLY PROHIBITED.



Date: JANUARY 2025

Revisions:
A ADD. #3 02/18/2025

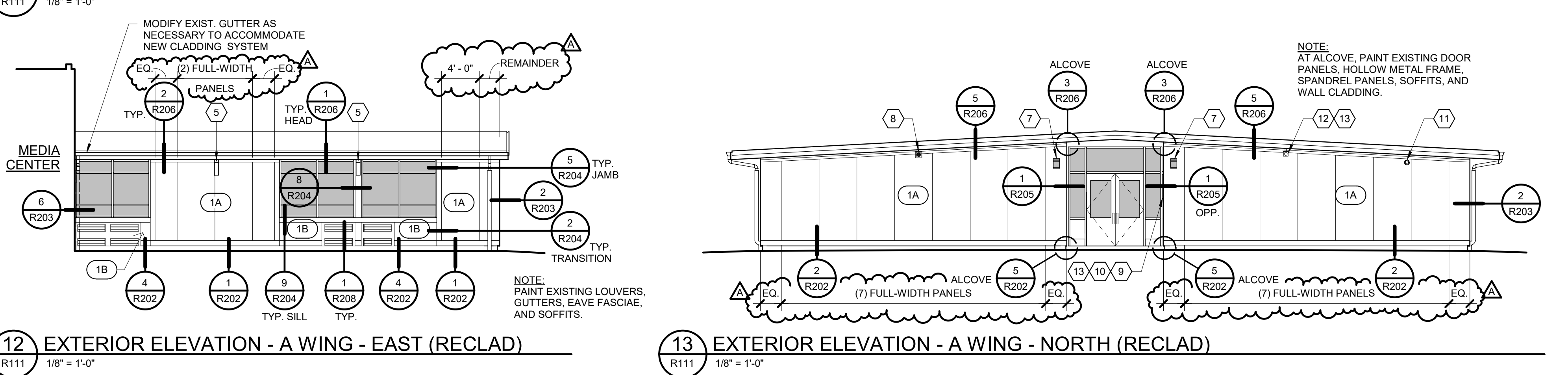
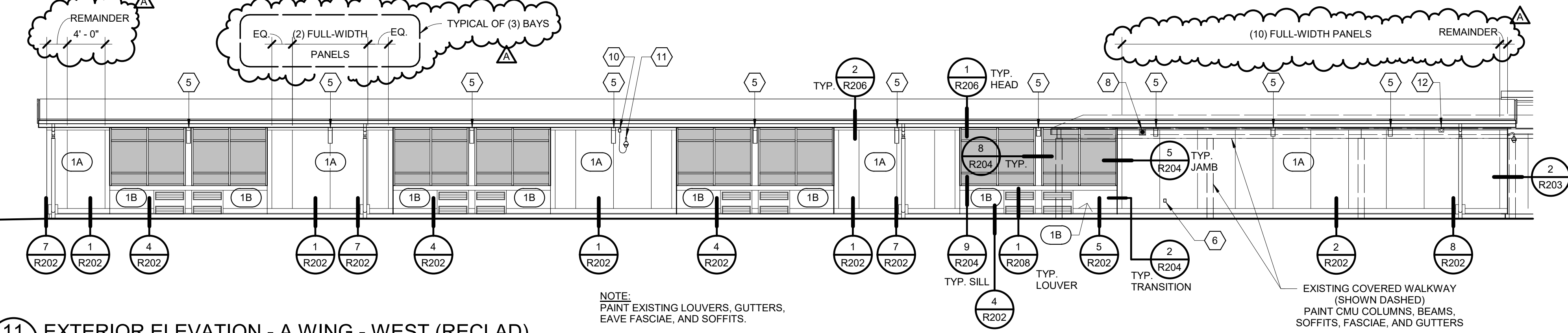
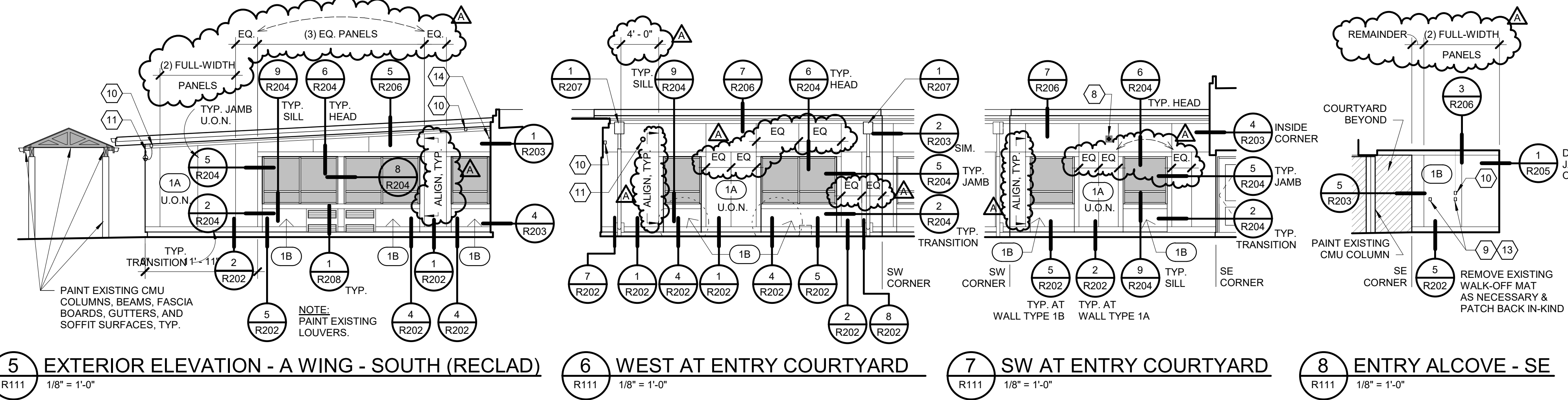
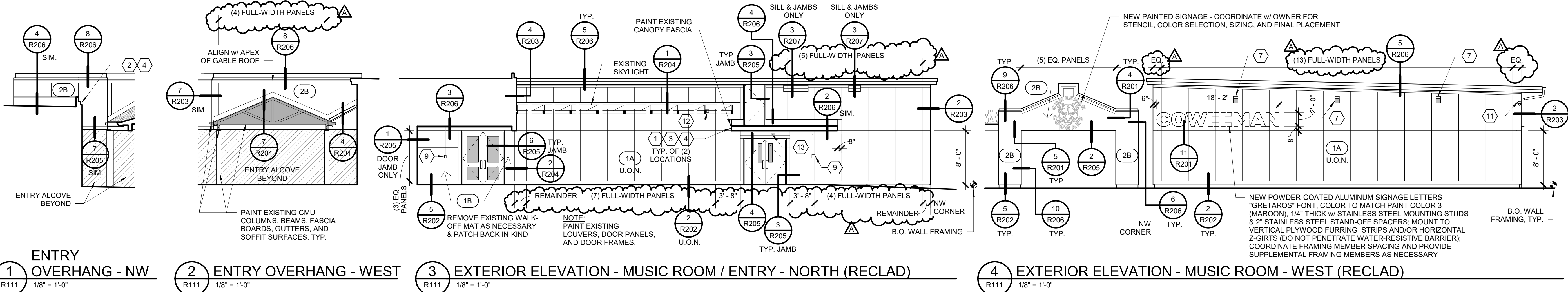
Drawn: RSB
Checked: TWB

PRC No.: R3383.04

Sheet No.:

R111

© 2025, Professional Roof Consultants, Inc.



SHEET NOTES

- REFER TO DEMO SHEETS R101 THROUGH R104 FOR IDENTIFICATION OF ITEMS NOT NOTED.
- #/X EXTERIOR WALL ASSEMBLY - REFER TO SHEET R200.

A. FIELD VERIFY AND EXAMINE EXISTING SUBSTRATE CONDITIONS TO CONFIRM DIMENSIONS, CONFIGURATIONS, AND MATERIALS. REFER TO STRUCTURAL DRAWINGS FOR LOCATIONS OF REQUIRED REPAIRS TO EXISTING WALL FRAMING. WHERE WALL FRAMING REPAIRS ARE INDICATED, AND WHERE EXISTING SHEATHING IS DAMAGED, REMOVE AND REPLACE EXISTING WALL SHEATHING IN-KIND (LIKE-FOR-LIKE IN TERMS OF THICKNESS, NUMBER OF LAYERS, AND MATERIAL TYPE) TO MATCH SURROUNDING EXISTING CONSTRUCTION TO REMAIN.

B. REFER TO STRUCTURAL DRAWINGS FOR SPECIFICATION OF MATERIAL, SPACING, AND FASTENING REQUIREMENTS FOR HORIZONTAL COLD-FORMED STEEL Z-GIRT FRAMING AND VERTICAL PLYWOOD FURRING STRIPS.
- FOR JOINTS BETWEEN ADJACENT FIBER-CEMENT SIDING PANELS:

A. VERTICAL JOINTS: REFER TO DETAILS 2/R201 (INSULATED) & 4/R201 (UNINSULATED).

B. HORIZONTAL JOINTS: REFER TO DETAILS 3/R201 (INSULATED) & 5/R201 (UNINSULATED).

KEYED NOTES LIST IS COMPREHENSIVE - NOT ALL KEYED NOTES APPLY TO ALL SHEETS

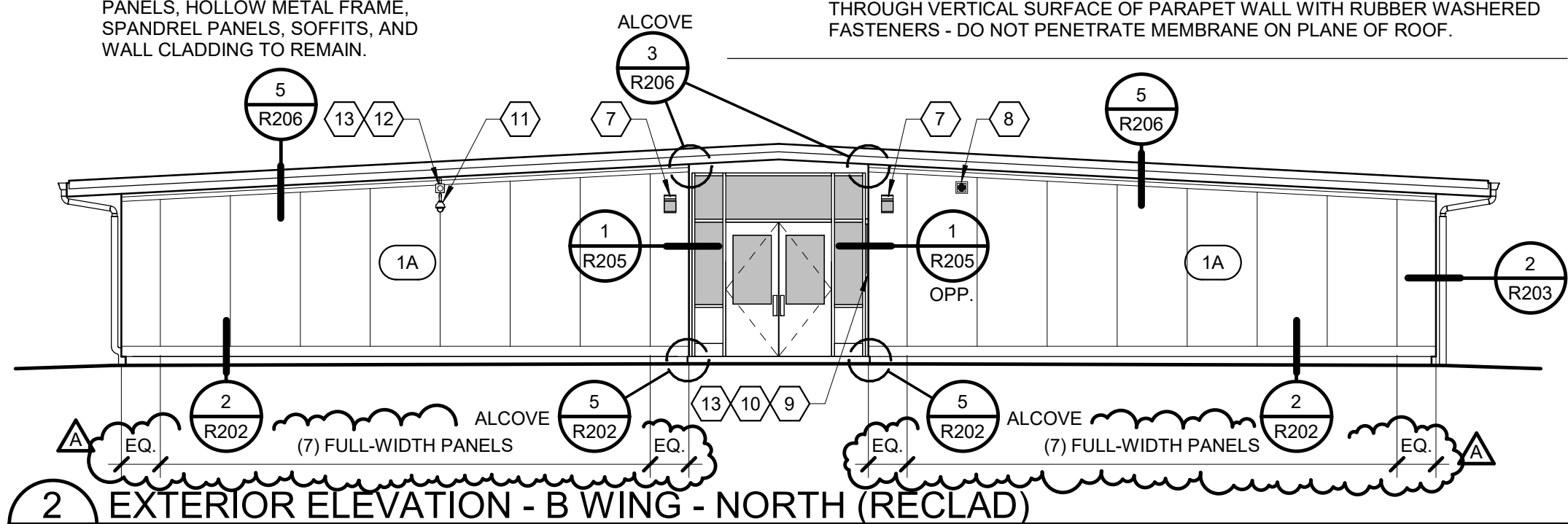
- EXISTING CANOPY FASCIA INTERSECTION WITH EXTERIOR WALL.
- EXISTING PARAPET INTERSECTION WITH EXTERIOR WALL.
- EXISTING ROOF INTERSECTION WITH EXTERIOR WALL.
- PROVIDE REMOVABLE FIBER CEMENT CLADDING PANEL(S) TO ALLOW ACCESS FOR FUTURE REPLACEMENT OF ROOF SYSTEM (AND RELATED SADDLE FLASHING INSTALLATION) - SECURE WITH RUBBER WASHERED FASTENERS.
- EXISTING GLULAM BEAM OUTLOOKER - REFER TO DETAILS 9/R201 & 10/R201.
- EXISTING HOSE BIB / WALL HYDRANT - REFER TO DETAIL 8/R201.
- EXISTING LIGHT FIXTURE - REFER TO DETAIL 7/R201.
- EXISTING SPEAKER - REFER TO DETAIL 7/R201.
- EXISTING DOOR ACCESS CONTROL - REFER TO DETAIL 7/R201.
- EXISTING SECURITY CAMERA - REFER TO DETAIL 7/R201.
- EXISTING FIRE ALARM - REFER TO DETAIL 7/R201.
- EXISTING ELECTRICAL CONDUIT PENETRATION - REFER TO DETAIL 6/R201.
- EXISTING LOW-VOLTAGE CABLE PENETRATION - REFER TO DETAIL 6/R201.
- PROVIDE STAINLESS STEEL KICK-OUT FLASHING / WATER DIVERTER - FULLY BED FLANGES IN BUTYL SEALANT OVER EXISTING ROOF MEMBRANE AND SECURE THROUGH VERTICAL SURFACE OF PARAPET WALL WITH RUBBER WASHERED FASTENERS - DO NOT PENETRATE MEMBRANE ON PLANE OF ROOF.

BID SET

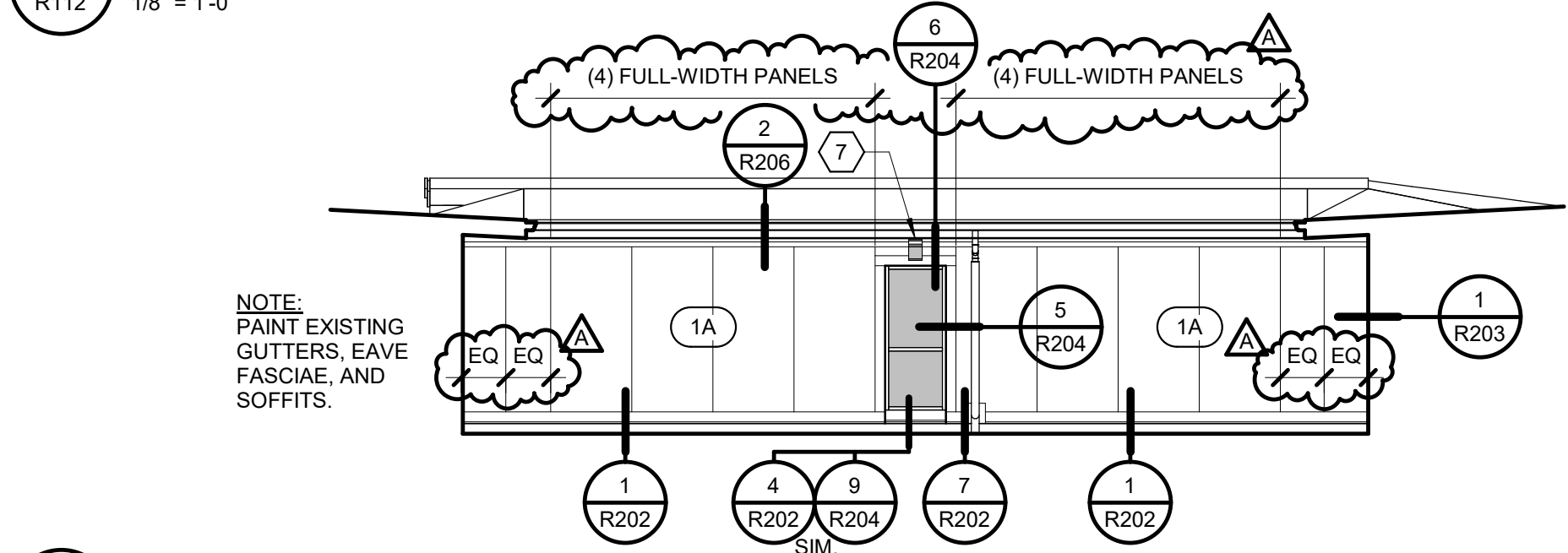
KEYED NOTES LIST IS COMPREHENSIVE - NOT ALL KEYED NOTES APPLY TO ALL SHEETS

- EXISTING CANOPY FASCIA INTERSECTION WITH EXTERIOR WALL.
- EXISTING PARAPET INTERSECTION WITH EXTERIOR WALL.
- EXISTING ROOF INTERSECTION WITH EXTERIOR WALL.
- PROVIDE REMOVABLE FIBER CEMENT CLADDING PANEL(S) TO ALLOW ACCESS FOR FUTURE REPLACEMENT OF ROOF SYSTEM (AND RELATED SADDLE FLASHING INSTALLATION) - SECURE WITH RUBBER WASHERED FASTENERS.
- EXISTING GLULAM BEAM OUTLOOKER - REFER TO DETAILS 9/R201 & 10/R201.
- EXISTING HOSE BIB / WALL HYDRANT - REFER TO DETAIL 8/R201.
- EXISTING LIGHT FIXTURE - REFER TO DETAIL 7/R201.
- EXISTING SPEAKER - REFER TO DETAIL 7/R201.
- EXISTING DOOR ACCESS CONTROL - REFER TO DETAIL 7/R201.
- EXISTING ELECTRICAL RECEPTACLE OR JUNCTION BOX - REFER TO DETAIL 7/R201.
- EXISTING SECURITY CAMERA - REFER TO DETAIL 7/R201.
- EXISTING FIRE ALARM - REFER TO DETAIL 7/R201.
- EXISTING ELECTRICAL CONDUIT PENETRATION - REFER TO DETAIL 6/R201.
- EXISTING LOW-VOLTAGE CABLE PENETRATION - REFER TO DETAIL 6/R201.
- PROVIDE STAINLESS STEEL KICK-OUT FLASHING / WATER DIVERTER - FULLY BED FLANGES IN BUTYL SEALANT OVER EXISTING ROOF MEMBRANE AND SECURE THROUGH VERTICAL SURFACE OF PARAPET WALL WITH RUBBER WASHERED FASTENERS - DO NOT PENETRATE MEMBRANE ON PLANE OF ROOF.

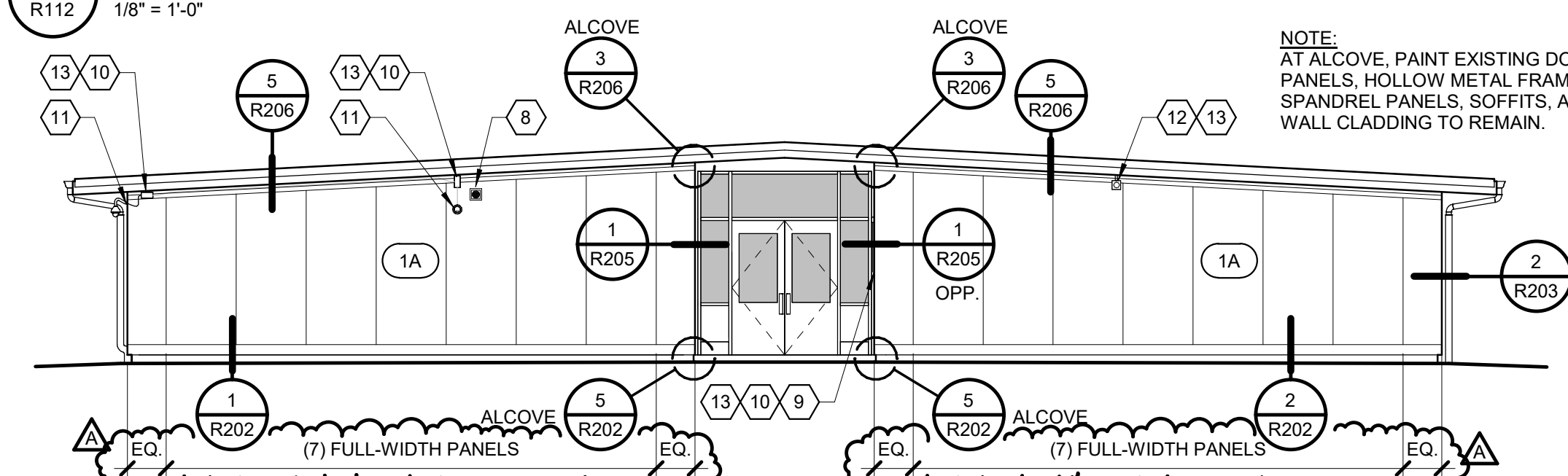
NOTE:
AT ALCOVE, PAINT EXISTING DOOR PANELS, HOLLOW METAL FRAME, SPANDREL PANELS, SOFFITS, AND WALL CLADDING TO REMAIN.



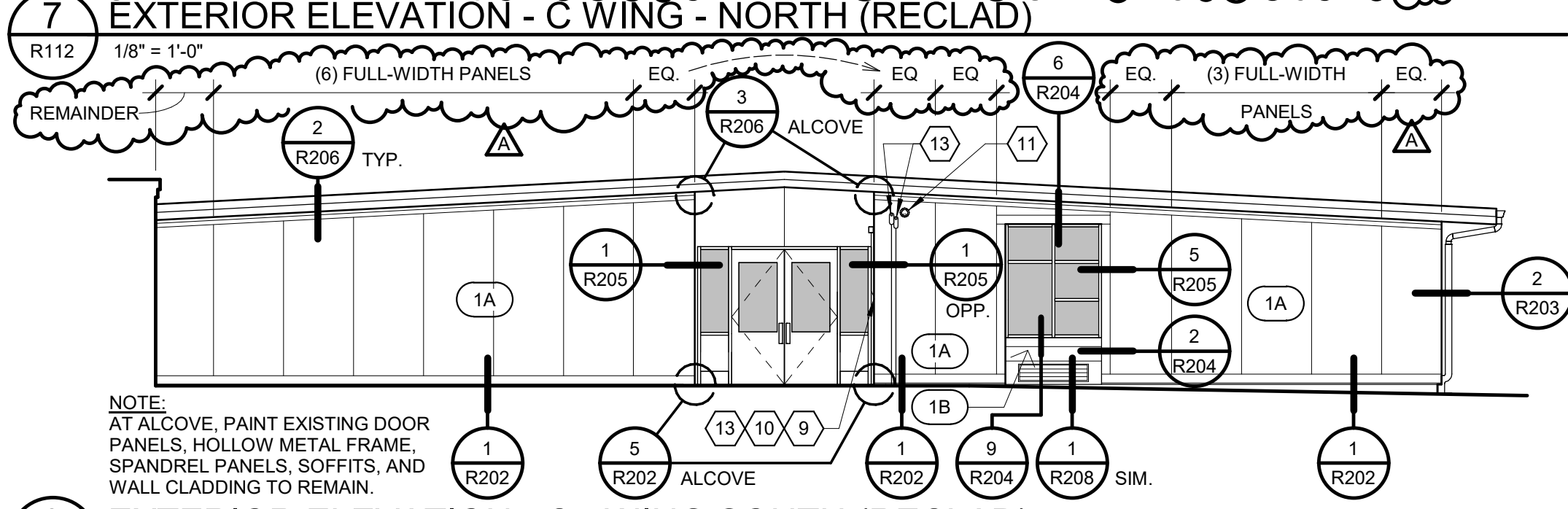
NOTE:
PAINT EXISTING GUTTERS, EAVE FASCIAE, AND SOFFITS.



NOTE:
AT ALCOVE, PAINT EXISTING DOOR PANELS, HOLLOW METAL FRAME, SPANDREL PANELS, SOFFITS, AND WALL CLADDING TO REMAIN.



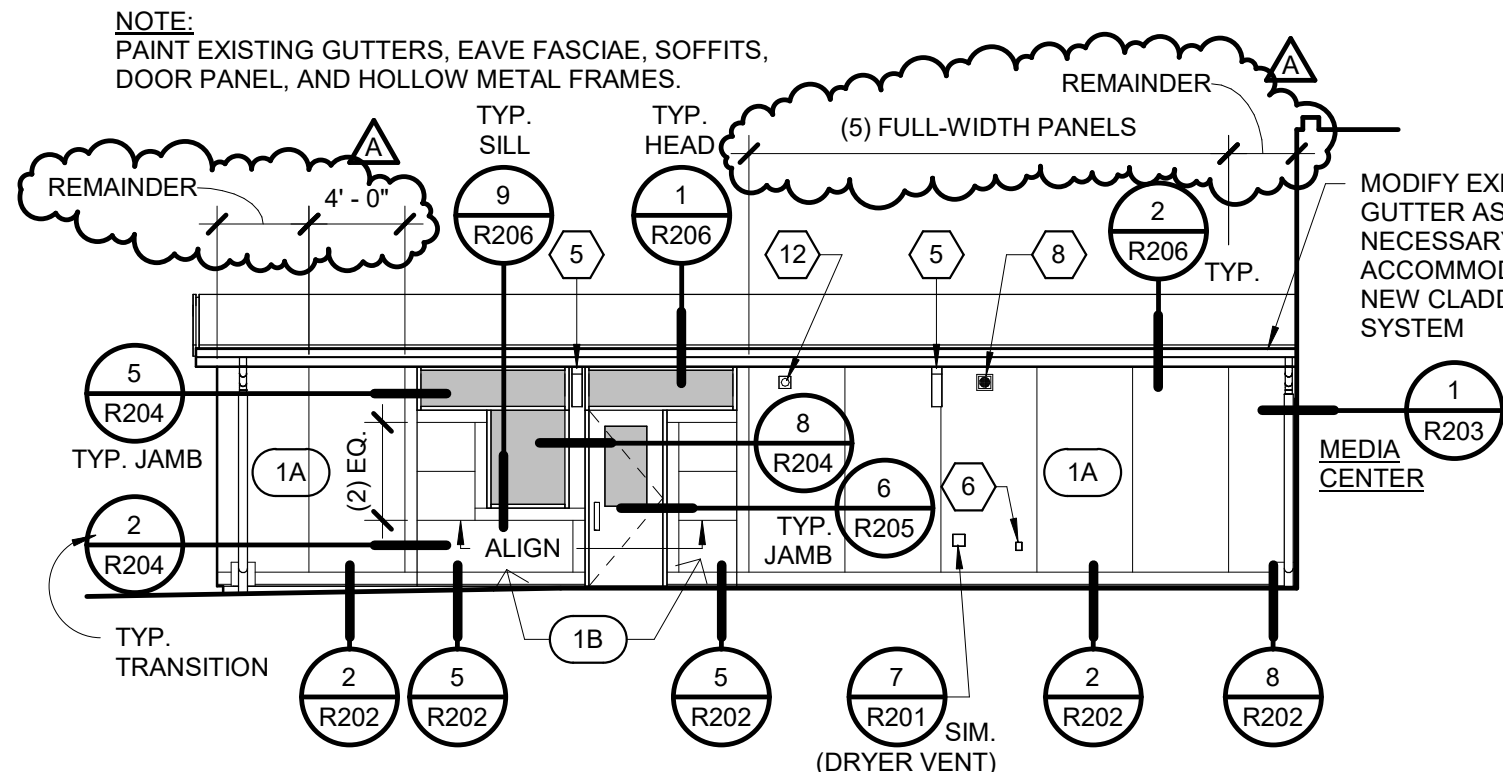
NOTE:
AT ALCOVE, PAINT EXISTING DOOR PANELS, HOLLOW METAL FRAME, SPANDREL PANELS, SOFFITS, AND WALL CLADDING TO REMAIN.



SHEET NOTES

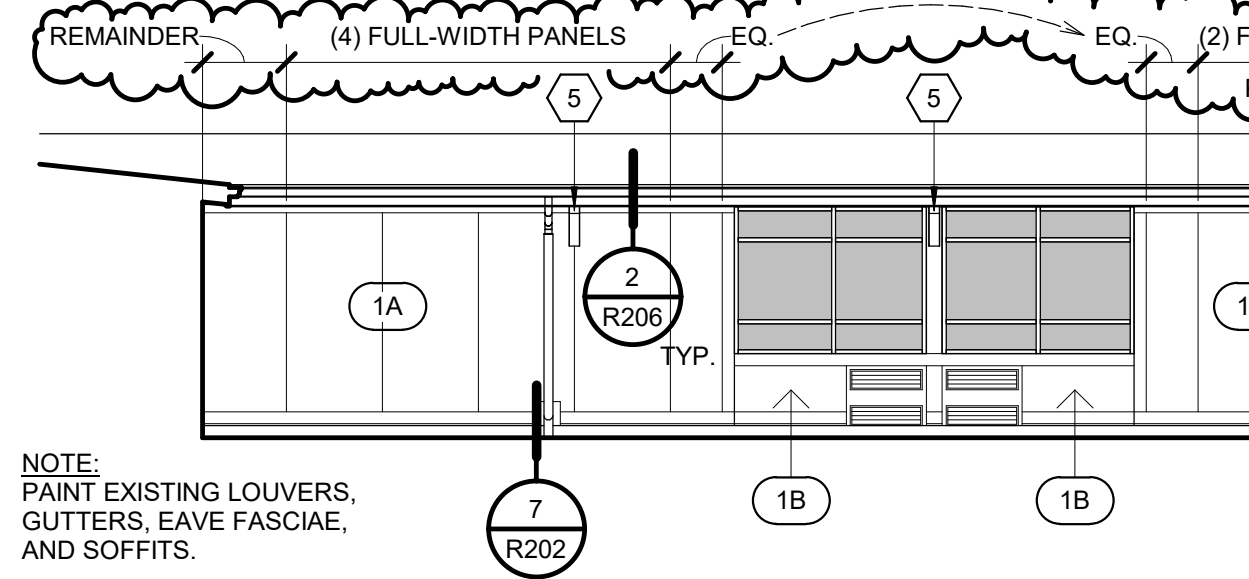
- REFER TO DEMO SHEETS R101 THROUGH R104 FOR IDENTIFICATION OF ITEMS NOT NOTED.
- #X EXTERIOR WALL ASSEMBLY - REFER TO SHEET R200.
 - FIELD VERIFY AND EXAMINE EXISTING SUBSTRATE CONDITIONS TO CONFIRM DIMENSIONS, CONFIGURATIONS, AND MATERIALS. REFER TO STRUCTURAL DRAWINGS FOR LOCATIONS OF REQUIRED REPAIRS TO EXISTING WALL FRAMING. WHERE WALL FRAMING REPAIRS ARE INDICATED, AND WHERE EXISTING SHEATHING IS DAMAGED, REMOVE AND REPLACE EXISTING WALL SHEATHING IN-KIND (LIKE-FOR-LIKE IN TERMS OF THICKNESS, NUMBER OF LAYERS, AND MATERIAL TYPE) TO MATCH SURROUNDING EXISTING CONSTRUCTION TO REMAIN.
 - REFER TO STRUCTURAL DRAWINGS FOR SPECIFICATION OF MATERIAL, SPACING, AND FASTENING REQUIREMENTS FOR HORIZONTAL COLD-FORMED STEEL Z-GIRT FRAMING AND VERTICAL PLYWOOD FURRING STRIPS.
- FOR JOINTS BETWEEN ADJACENT FIBER-CEMENT SIDING PANELS:
 - VERTICAL JOINTS:
REFER TO DETAILS 2/R201 (INSULATED) & 4/R201 (UNINSULATED).
 - HORIZONTAL JOINTS:
REFER TO DETAILS 3/R201 (INSULATED) & 5/R201 (UNINSULATED).

NOTE:
PAINT EXISTING GUTTERS, EAVE FASCIAE, SOFFITS, DOOR PANEL, AND HOLLOW METAL FRAMES.



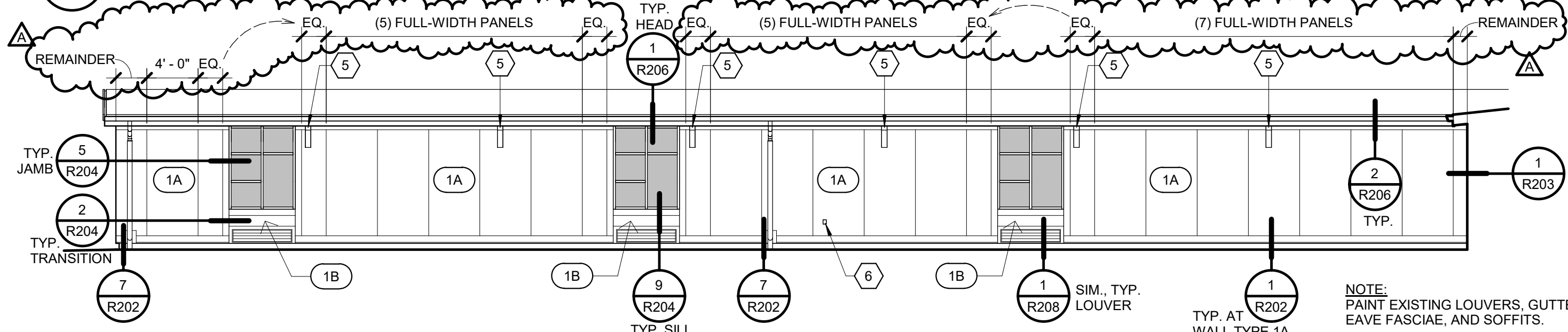
3 EXTERIOR ELEVATION - B WING - WEST (RECLAD)

1/8" = 1'-0"



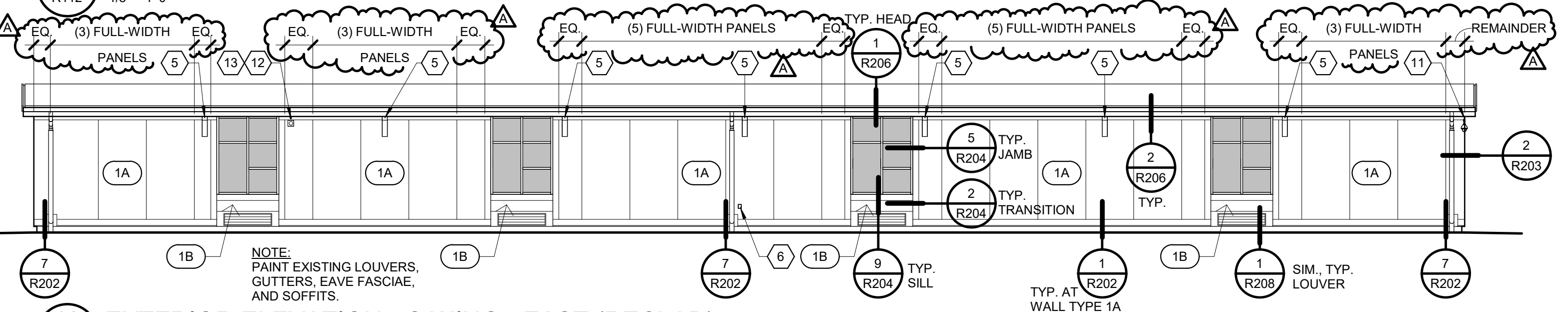
6 EXTERIOR ELEVATION - B WING - EAST (RECLAD)

1/8" = 1'-0"



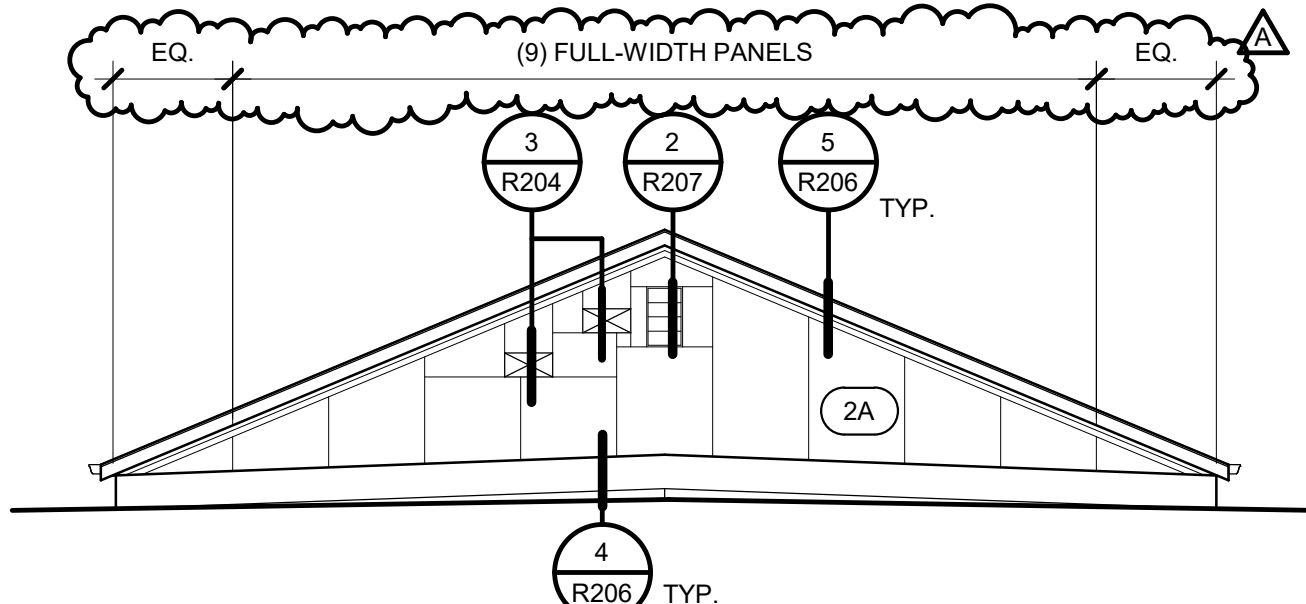
8 EXTERIOR ELEVATION - C WING - WEST (RECLAD)

1/8" = 1'-0"



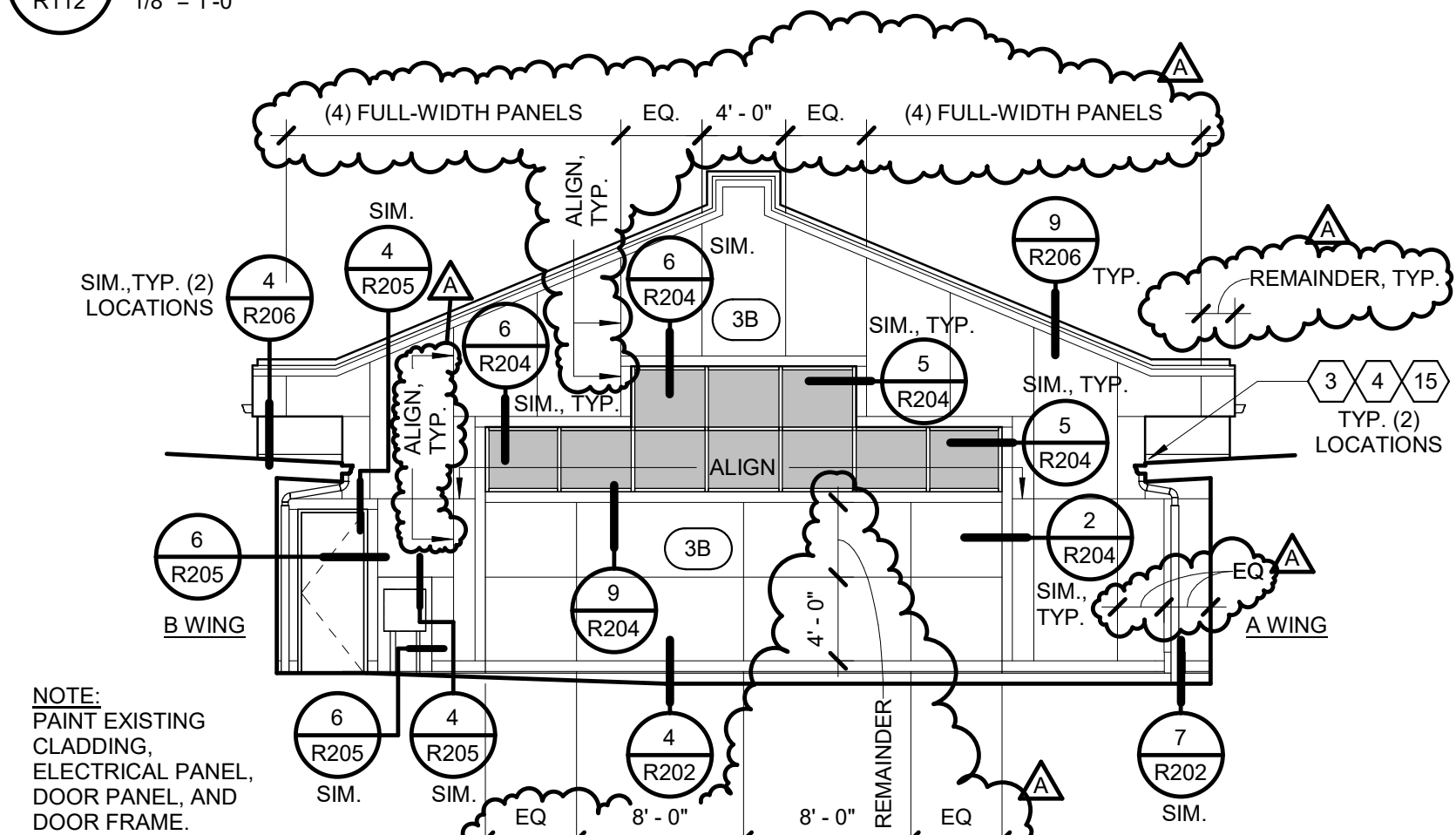
10 EXTERIOR ELEVATION - C WING - EAST (RECLAD)

1/8" = 1'-0"



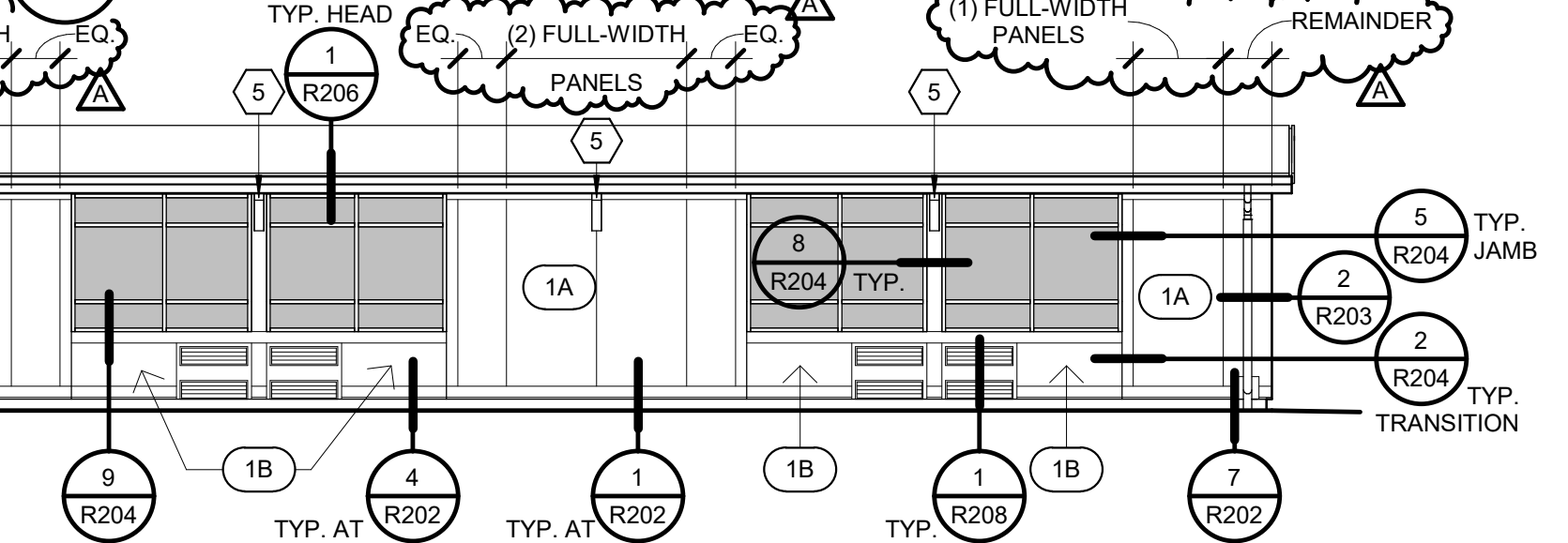
1 EXTERIOR ELEVATION - MEDIA CENTER - SOUTH (RECLAD)

1/8" = 1'-0"



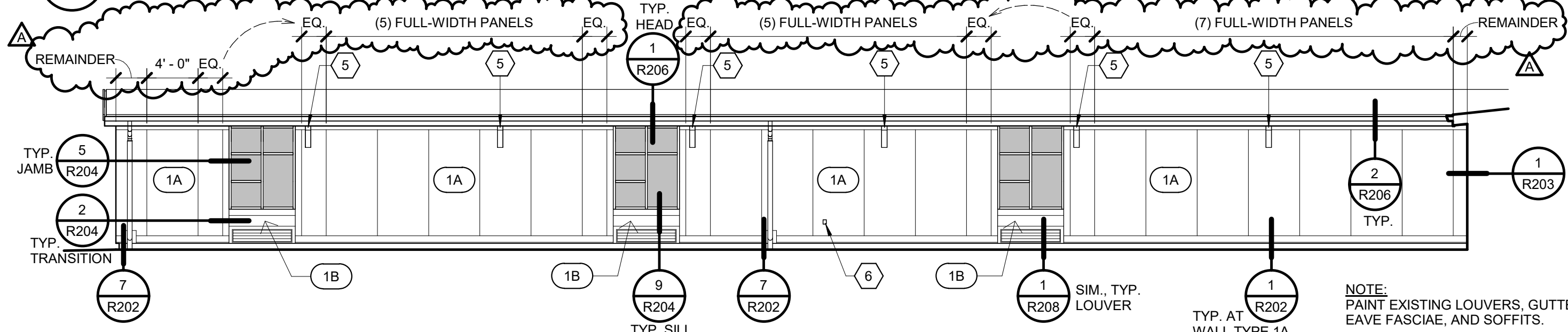
4 EXTERIOR ELEVATION - MEDIA CENTER - NORTH (RECLAD)

1/8" = 1'-0"



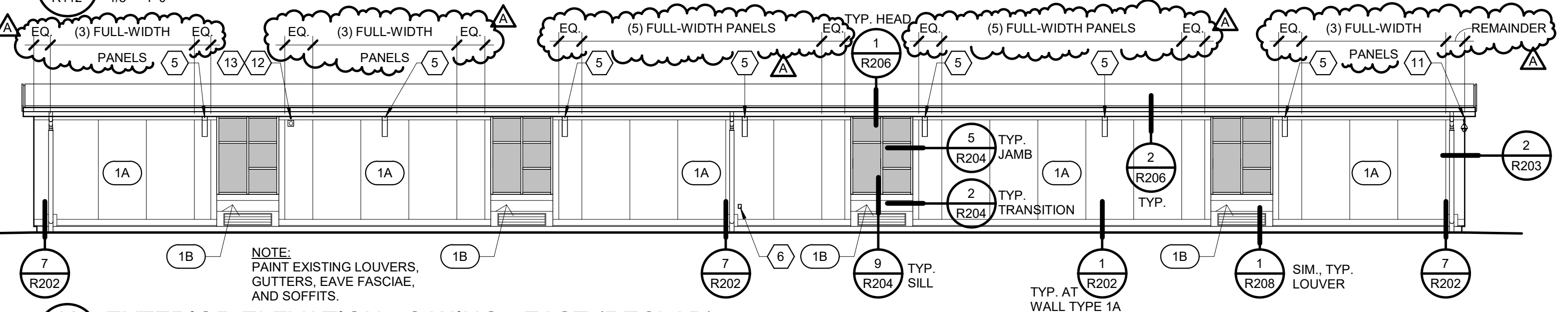
6 EXTERIOR ELEVATION - B WING - EAST (RECLAD)

1/8" = 1'-0"



8 EXTERIOR ELEVATION - C WING - WEST (RECLAD)

1/8" = 1'-0"



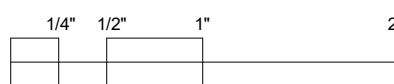
10 EXTERIOR ELEVATION - C WING - EAST (RECLAD)

1/8" = 1'-0"

**KELSO SCHOOL DISTRICT
COWEEMAN MIDDLE SCHOOL
CLADDING REPLACEMENT**

Sheet Title:
EXTERIOR ELEVATIONS - NEW

THESE DRAWINGS ARE INSTRUMENTS OF
SERVICE AND THE PROPERTY OF
PROFESSIONAL ROOF CONSULTANTS, INC.
UNAUTHORIZED REPRODUCTION IS
EXPRESSLY PROHIBITED.



THIS BAR SCALE MEASURES 2 INCHES IN LENGTH WHEN THE SHEET IS PRINTED FULL-SIZE. IF THIS BAR IS NOT 2 INCHES LONG, THE VIEWS ON THIS SHEET ARE NOT TO THE SCALE INDICATED.

Date: JANUARY 2025

Revisions:		
A	ADD. #3	02/18/2025

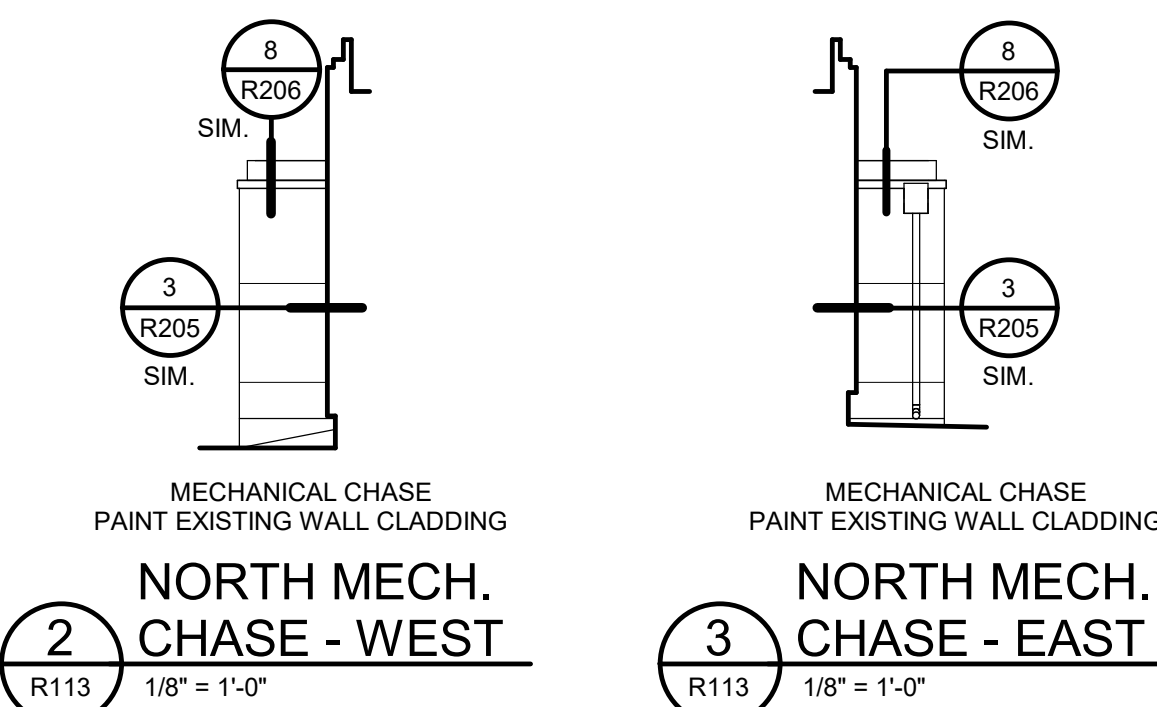
Drawn: RSE
Checked: TWE

PRC No.: R3383.04

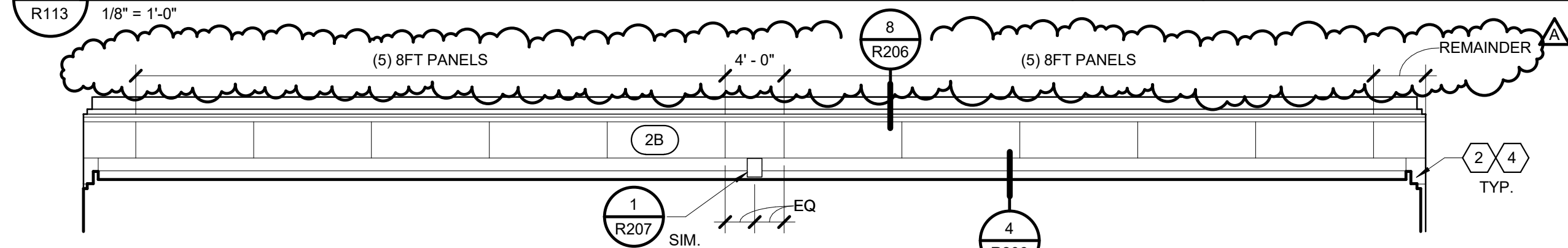
Sheet No.:

R113

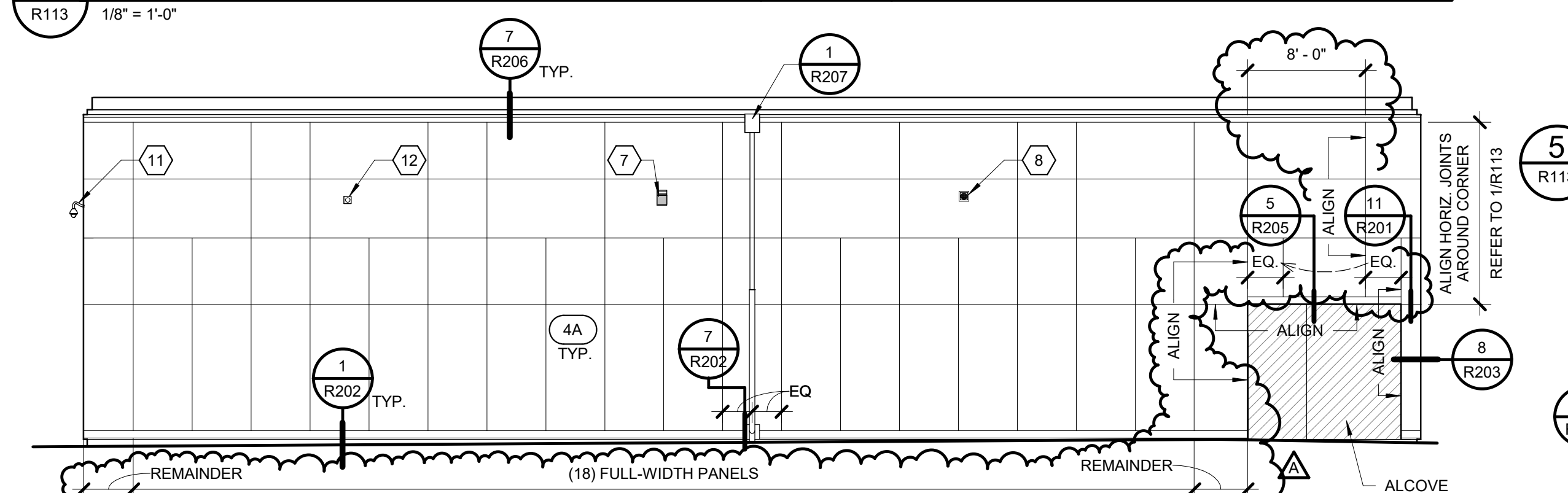
© 2025, Professional Roof Consultants, Inc.

[illegible]

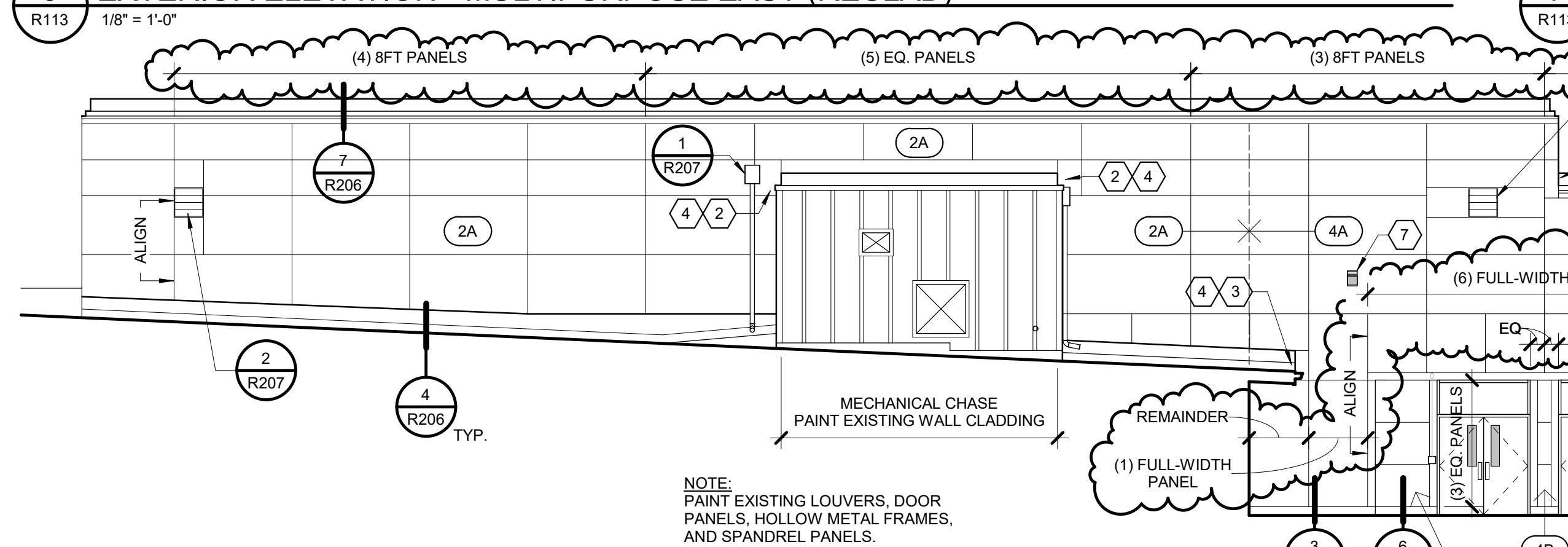
1 EXTERIOR ELEVATION - GYMNASIUM & MULTIPURPOSE NORTH (RECLAD)



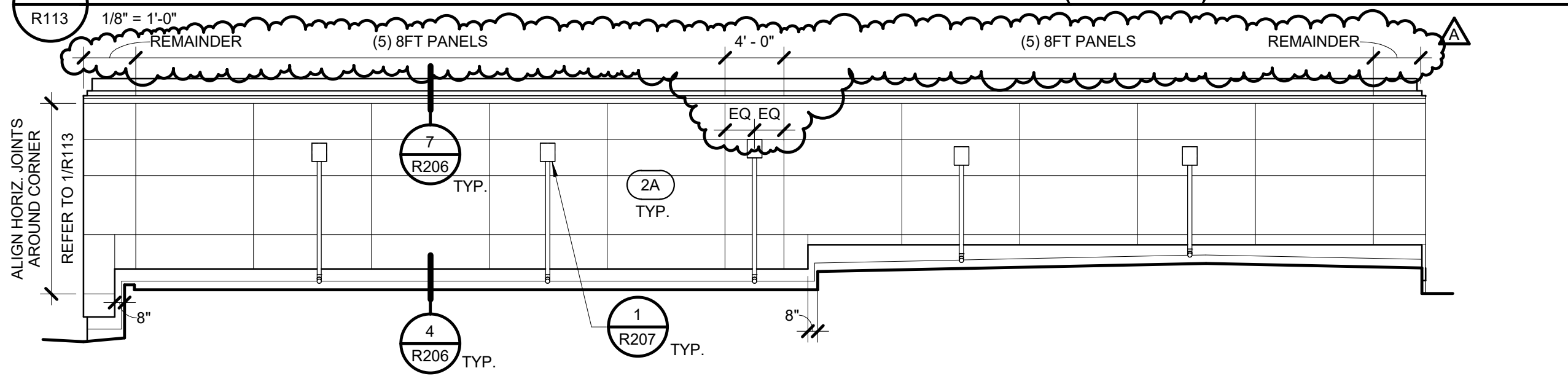
4 EXTERIOR ELEVATION - GYMNASIUM EAST (RECLAD)



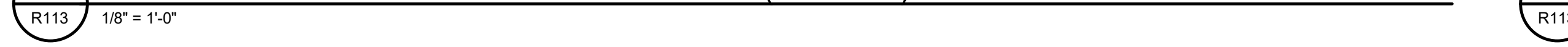
6 EXTERIOR ELEVATION - MULTIPURPOSE EAST (RECLAD)



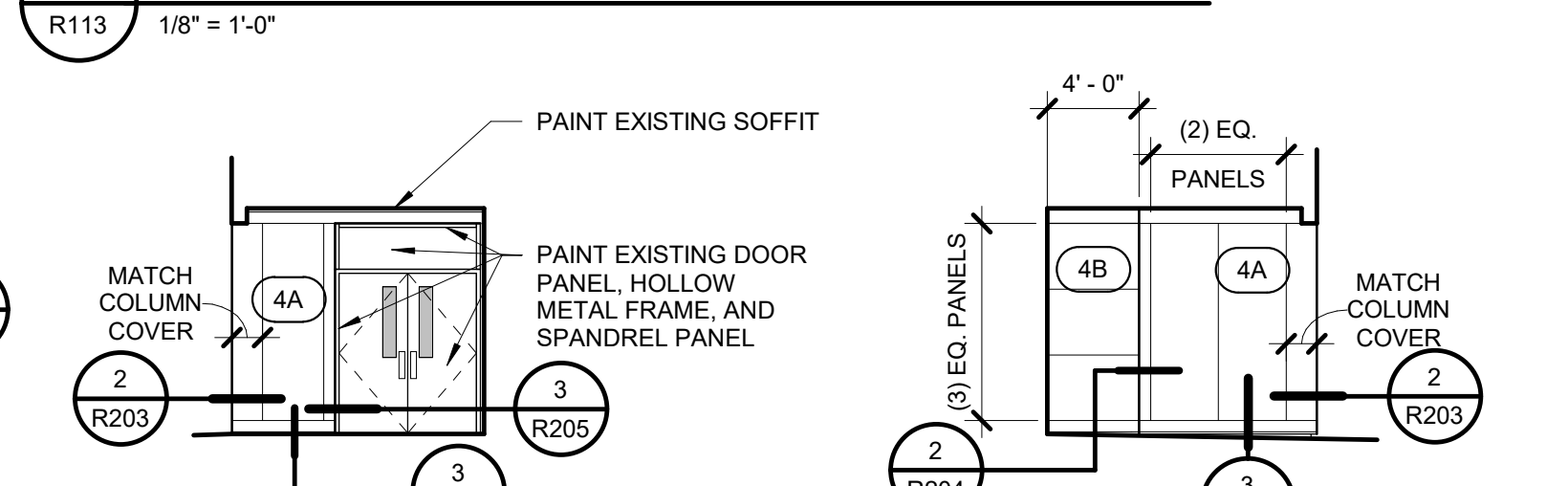
9 EXTERIOR ELEVATION - GYMNASIUM & MULTIPURPOSE SOUTH (RECLAD)



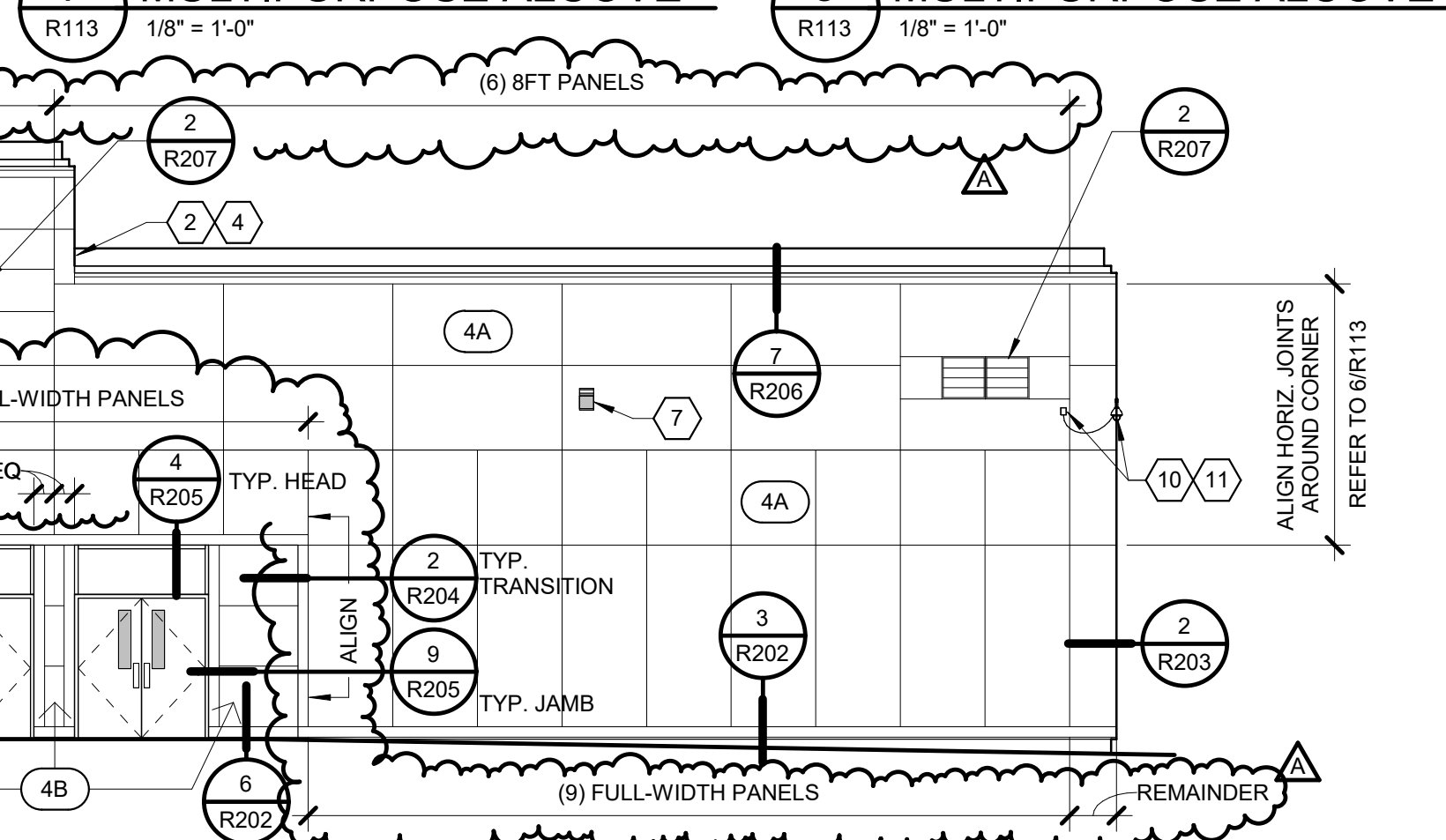
11 EXTERIOR ELEVATION - GYMNASIUM WEST (RECLAD)



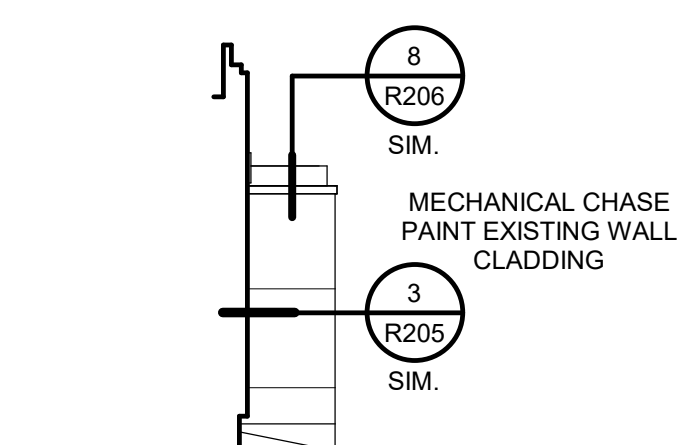
5 EAST BETWEEN C WING & MULTIPURPOSE



7 NORTH AT R202
MULTIPURPOSE ALCOVE



8 EAST AT
MULTIPURPOSE ALCOVE



10 SOUTH MECH.
CHASE - WEST

R113 $1/8" \equiv 1'-0"$

SHEET NOTES

1. REFER TO DEMO SHEETS R101 THROUGH R104 FOR IDENTIFICATION OF ITEMS NOT NOTED.
2. #1X EXTERIOR WALL ASSEMBLY - REFER TO SHEET R200.
 - A. FIELD VERIFY AND EXAMINE EXISTING SUBSTRATE CONDITIONS TO CONFIRM DIMENSIONS, CONFIGURATIONS, AND MATERIALS. REFER TO STRUCTURAL DRAWINGS FOR LOCATIONS OF REQUIRED REPAIRS TO EXISTING WALL FRAMING. WHERE WALL FRAMING REPAIRS ARE INDICATED, AND WHERE EXISTING SHEATHING IS DAMAGED, REMOVE AND REPLACE EXISTING WALL SHEATHING IN-KIND (LIKE-FOR-LIKE IN TERMS OF THICKNESS, NUMBER OF LAYERS, AND MATERIAL TYPE) TO MATCH SURROUNDING EXISTING CONSTRUCTION TO REMAIN.
 - B. REFER TO STRUCTURAL DRAWINGS FOR SPECIFICATION OF MATERIAL, SPACING, AND FASTENING REQUIREMENTS FOR HORIZONTAL COLD-FORMED STEEL Z-GIRT FRAMING AND VERTICAL PLYWOOD FURRING STRIPS.
3. FOR JOINTS BETWEEN ADJACENT FIBER-CEMENT SIDING PANELS:
 - A. VERTICAL JOINTS:
REFER TO DETAILS 2/R201 (INSULATED) & 4/R201 (UNINSULATED).
 - B. HORIZONTAL JOINTS:
REFER TO DETAILS 3/R201 (INSULATED) & 5/R201 (UNINSULATED).

KEYED NOTES

LIST IS COMPREHENSIVE - NOT ALL KEYED NOTES APPLY TO ALL SHEETS

1. EXISTING CANOPY FASCIA INTERSECTION WITH EXTERIOR WALL.
2. EXISTING PARAPET INTERSECTION WITH EXTERIOR WALL.
3. EXISTING ROOF INTERSECTION WITH EXTERIOR WALL.
4. PROVIDE REMOVABLE FIBER CEMENT CLADDING PANEL(S) TO ALLOW ACCESS FOR FURE REPLACEMENT SYSTEM (AND RELATED SADDLE FLASHING INSTALLATION) - SECURE WITH RUBBER WASHERED FASTENERS.
5. EXISTING GLULAM BEAM OUTLOOKER - REFER TO DETAILS 9/R201 & 10/R201.
6. EXISTING HOSE BIB / WALL HYDRANT - REFER TO DETAIL 8/R201.
7. EXISTING LIGHT FIXTURE - REFER TO DETAIL 7/R201.
8. EXISTING SPEAKER - REFER TO DETAIL 7/R201.
9. EXISTING DOOR ACCESS CONTROL - REFER TO DETAIL 7/R201.
10. EXISTING ELECTRICAL RECEPTACLE OR JUNCTION BOX - REFER TO DETAIL 7/R201.
11. EXISTING SECURITY CAMERA - REFER TO DETAIL 7/R201.
12. EXISTING FIRE ALARM - REFER TO DETAIL 7/R201.
13. EXISTING ELECTRICAL CONDUIT PENETRATION - REFER TO DETAIL 6/R201.
14. EXISTING LOW-VOLTAGE CABLE PENETRATION - REFER TO DETAIL 6/R201.
15. PROVIDE STAINLESS STEEL KICK-OUT FLASHING / WATER DIVERTER - FULLY BED FLANGES IN BUTYL SEALANT OVER EXISTING ROOF MEMBRANE AND SECURE THROUGH VERTICAL SURFACE OF PARAPET WALL WITH RUBBER WASHERED FASTENERS - DO NOT PENETRATE MEMBRANE ON PLANE OF ROOF.

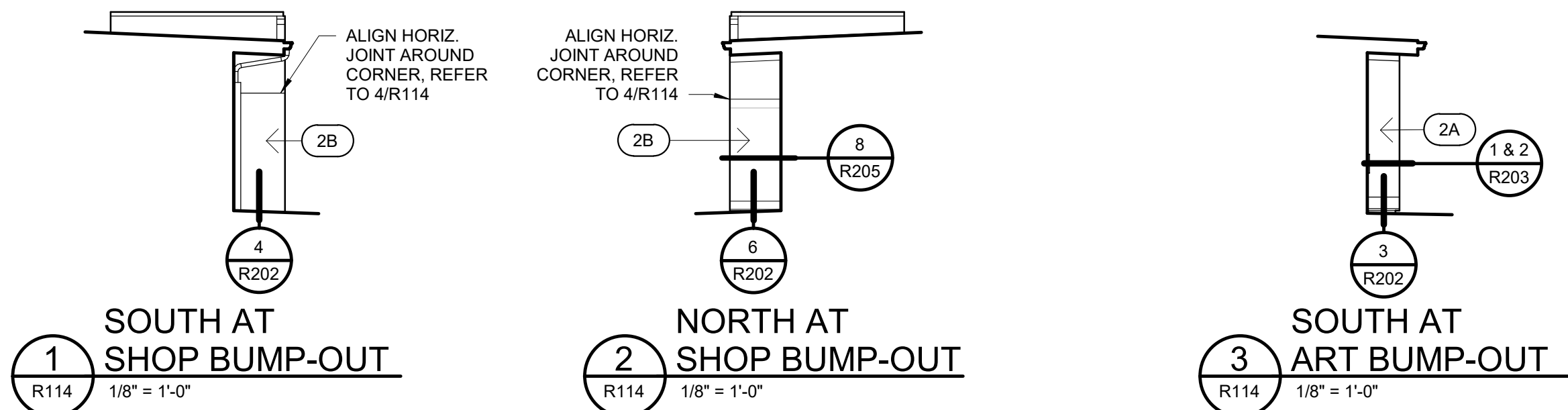
BID SET

SHEET NOTES

- REFER TO DEMO SHEETS R101 THROUGH R104 FOR IDENTIFICATION OF ITEMS NOT NOTED.
- (#/X) EXTERIOR WALL ASSEMBLY - REFER TO SHEET R200.
 - FIELD VERIFY AND EXAMINE EXISTING SUBSTRATE CONDITIONS TO CONFIRM DIMENSIONS, CONFIGURATIONS, AND MATERIALS. REFER TO STRUCTURAL DRAWINGS FOR LOCATIONS OF REQUIRED REPAIRS TO EXISTING WALL FRAMING. WHERE WALL FRAMING REPAIRS ARE INDICATED, AND WHERE EXISTING SHEATHING IS DAMAGED, REMOVE AND REPLACE EXISTING WALL SHEATHING IN-KIND (LIKE-FOR-LIKE IN TERMS OF THICKNESS, NUMBER OF LAYERS, AND MATERIAL TYPE) TO MATCH SURROUNDING EXISTING CONSTRUCTION TO REMAIN.
 - REFER TO STRUCTURAL DRAWINGS FOR SPECIFICATION OF MATERIAL, SPACING, AND FASTENING REQUIREMENTS FOR HORIZONTAL COLD-FORMED STEEL Z-GIRT FRAMING AND VERTICAL PLYWOOD FURRING STRIPS.
- FOR JOINTS BETWEEN ADJACENT FIBER-CEMENT SIDING PANELS:
 - VERTICAL JOINTS:
REFER TO DETAILS 2/R201 (INSULATED) & 4/R201 (UNINSULATED).
 - HORIZONTAL JOINTS:
REFER TO DETAILS 3/R201 (INSULATED) & 5/R201 (UNINSULATED).

KEYED NOTES

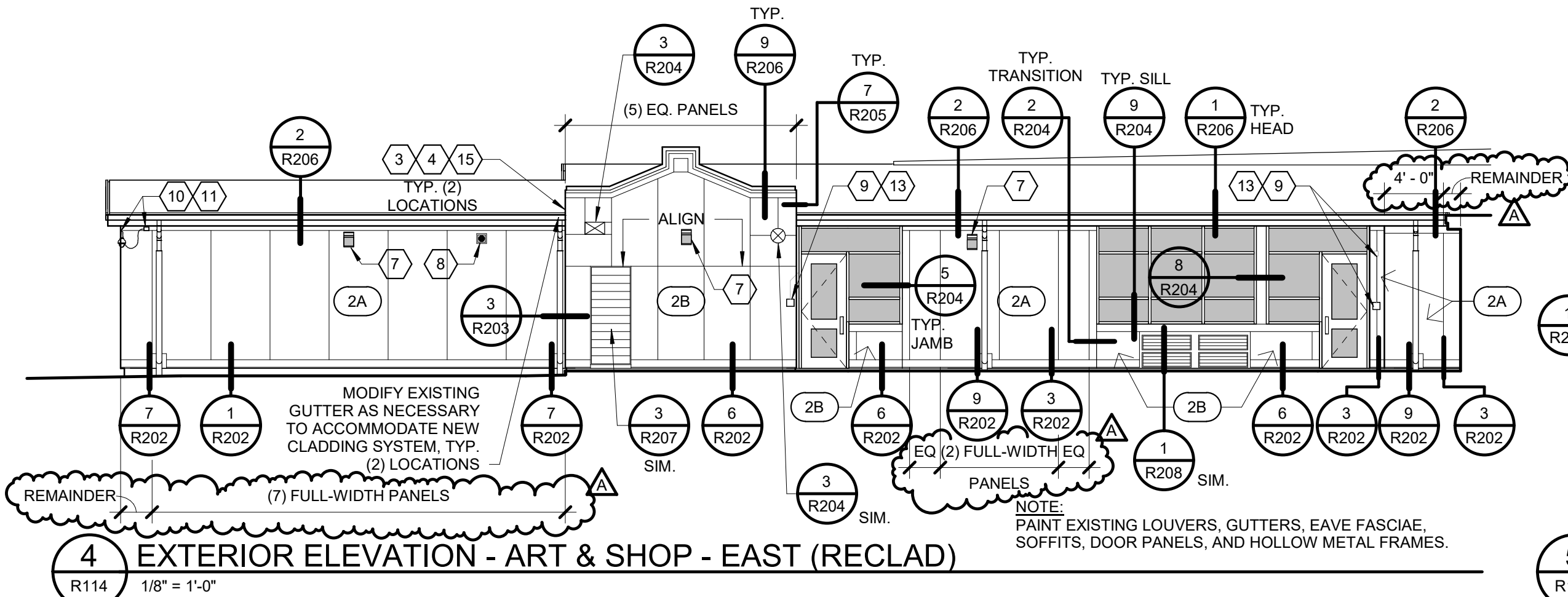
- LIST IS COMPREHENSIVE - NOT ALL KEYED NOTES APPLY TO ALL SHEETS
- EXISTING CANOPY FASCIA INTERSECTION WITH EXTERIOR WALL.
 - EXISTING PARAPET INTERSECTION WITH EXTERIOR WALL.
 - EXISTING ROOF INTERSECTION WITH EXTERIOR WALL.
 - PROVIDE REMOVABLE FIBER CEMENT CLADDING PANEL(S) TO ALLOW ACCESS FOR FUTURE REPLACEMENT OF ROOF SYSTEM (AND RELATED SADDLE FLASHING INSTALLATION) - SECURE WITH RUBBER WASHERED FASTENERS.
 - EXISTING GLULAM BEAM OUTLOOKER - REFER TO DETAILS 9/R201 & 10/R201.
 - EXISTING HOSE BIB / WALL HYDRANT - REFER TO DETAIL 8/R201.
 - EXISTING LIGHT FIXTURE - REFER TO DETAIL 7/R201.
 - EXISTING SPEAKER - REFER TO DETAIL 7/R201.
 - EXISTING DOOR ACCESS CONTROL - REFER TO DETAIL 7/R201.
 - EXISTING ELECTRICAL RECEPTACLE OR JUNCTION BOX - REFER TO DETAIL 7/R201.
 - EXISTING SECURITY CAMERA - REFER TO DETAIL 7/R201.
 - EXISTING FIRE ALARM - REFER TO DETAIL 7/R201.
 - EXISTING ELECTRICAL CONDUIT PENETRATION - REFER TO DETAIL 6/R201.
 - EXISTING LOW-VOLTAGE CABLE PENETRATION - REFER TO DETAIL 6/R201.
 - PROVIDE STAINLESS STEEL KICK-OUT FLASHING / WATER DIVERTER - FULLY BED FLANGES IN BUTYL SEALANT OVER EXISTING ROOF MEMBRANE AND SECURE THROUGH VERTICAL SURFACE OF PARAPET WALL WITH RUBBER WASHERED FASTENERS - DO NOT PENETRATE MEMBRANE ON PLANE OF ROOF.



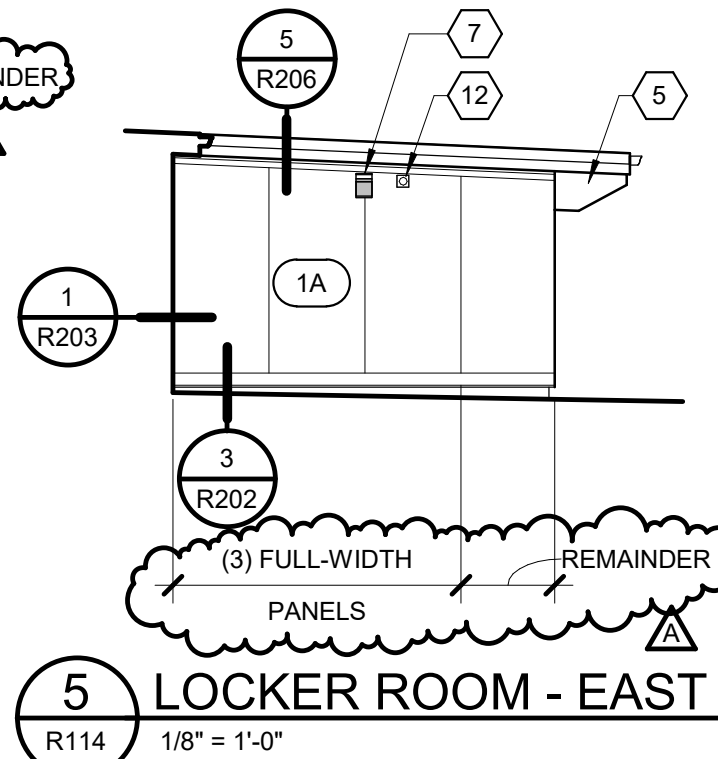
1 SOUTH AT SHOP BUMP-OUT
R114 1/8" = 1'-0"

2 NORTH AT SHOP BUMP-OUT
R114 1/8" = 1'-0"

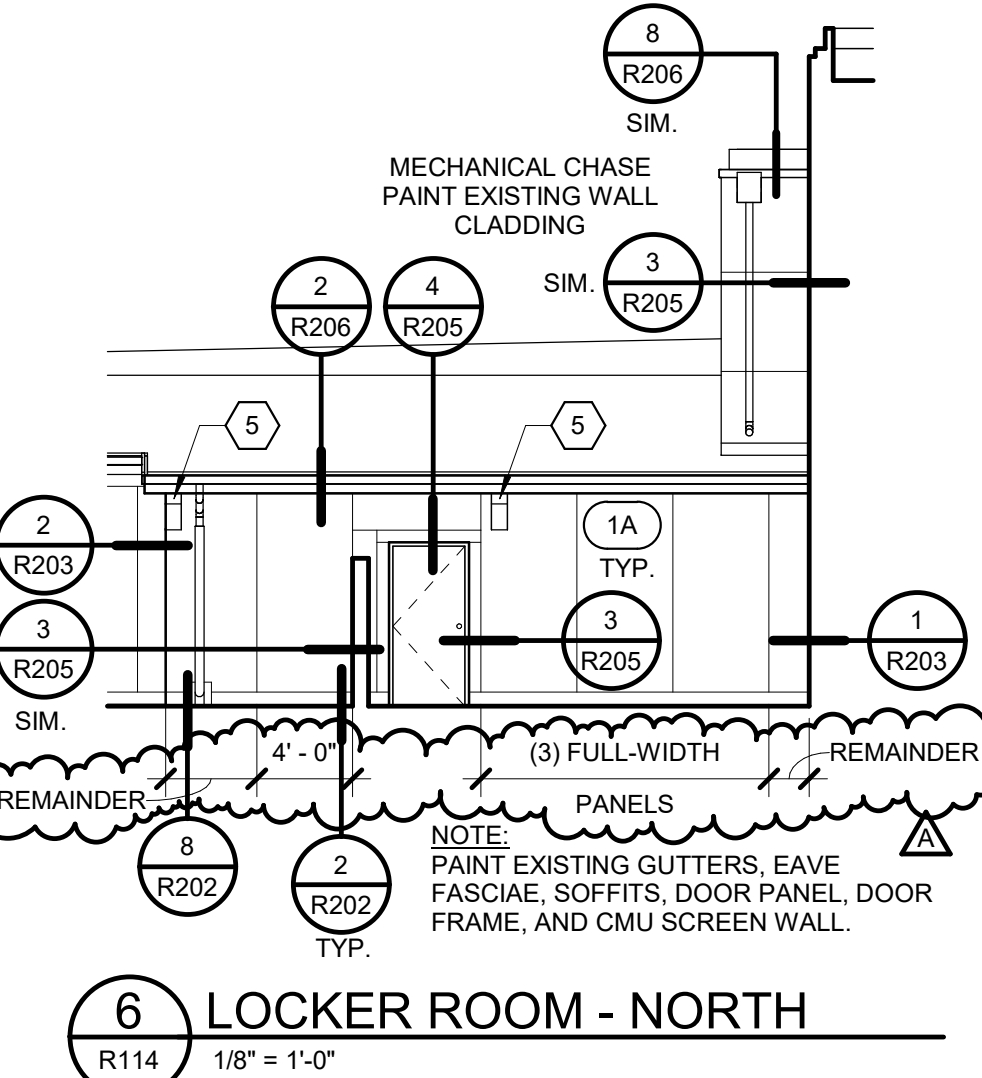
3 SOUTH AT ART BUMP-OUT
R114 1/8" = 1'-0"



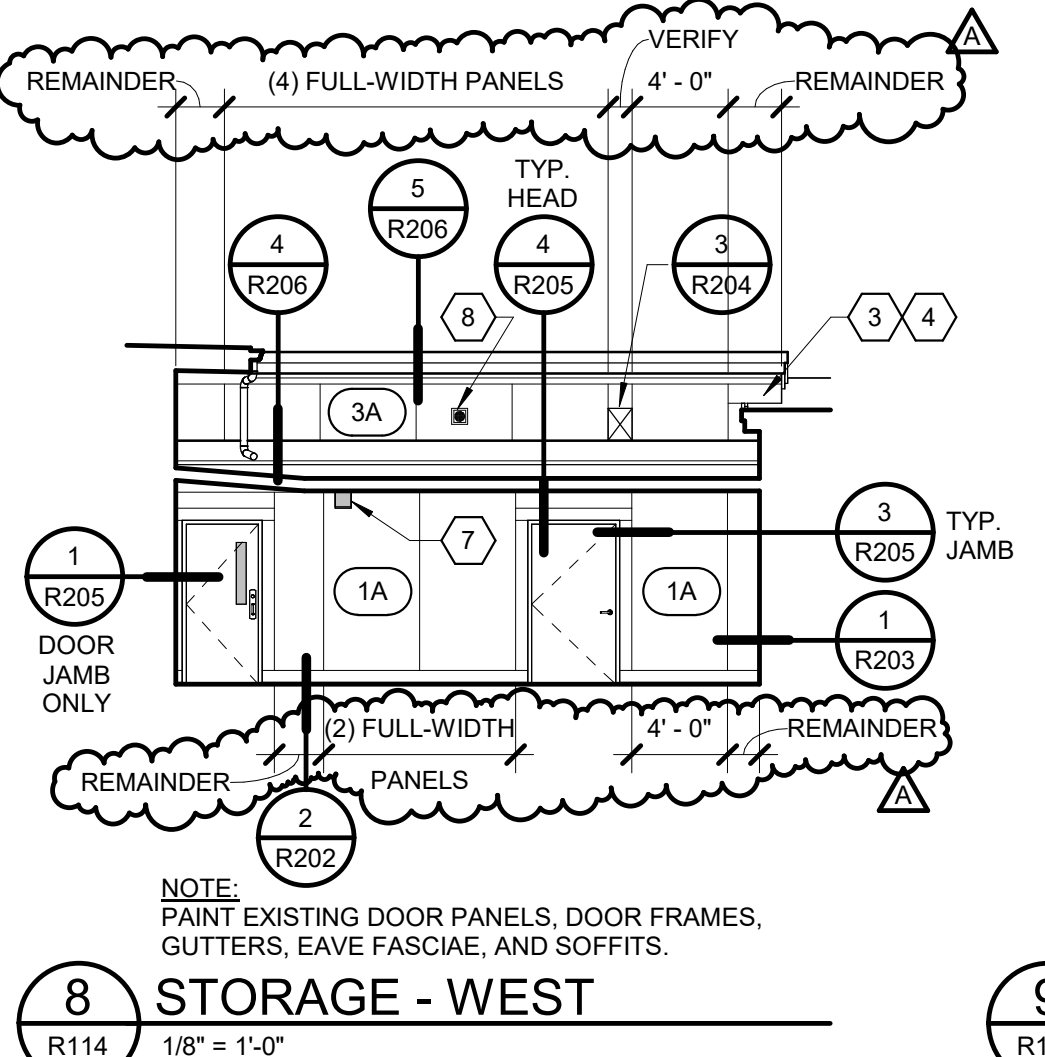
4 EXTERIOR ELEVATION - ART & SHOP - EAST (RECLAD)
R114 1/8" = 1'-0"



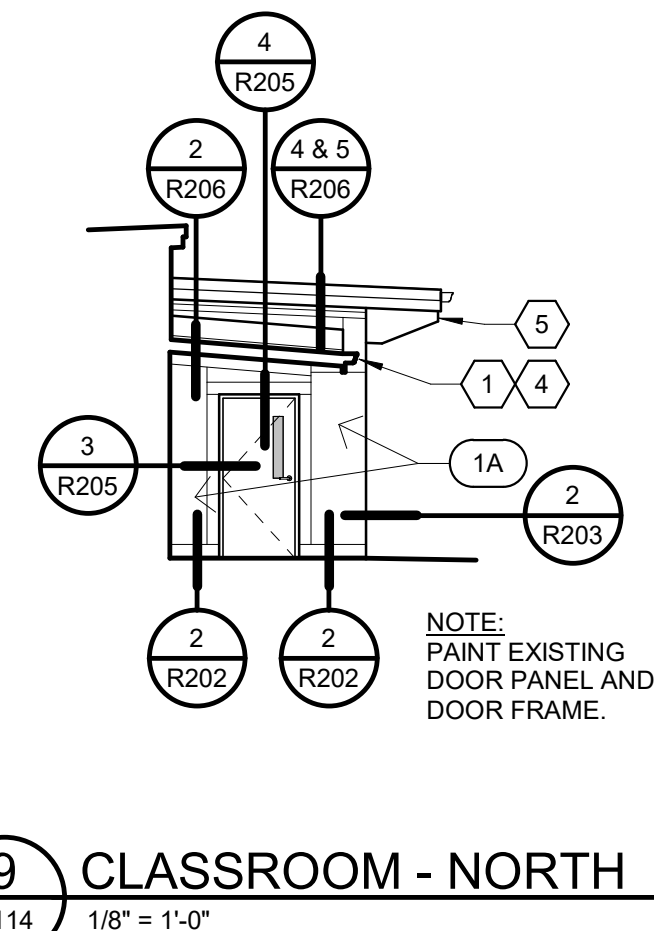
5 LOCKER ROOM - EAST
R114 1/8" = 1'-0"



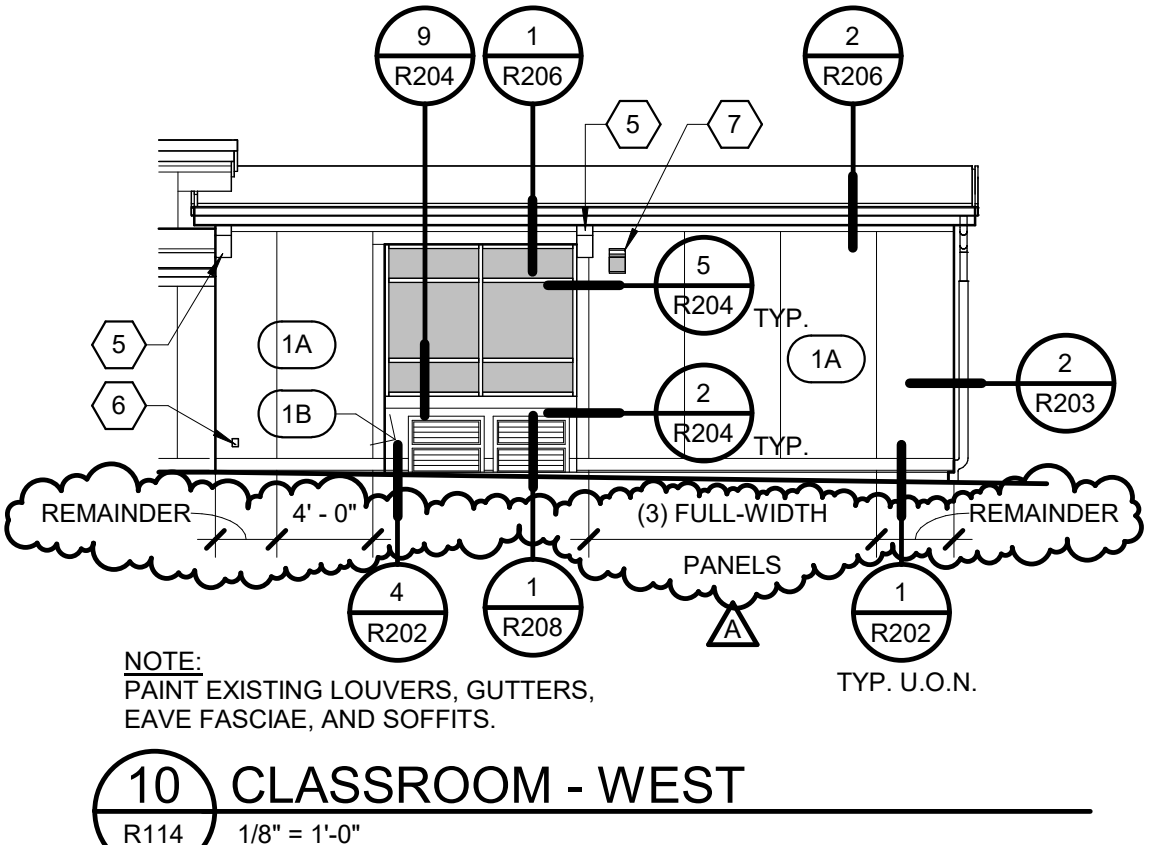
6 LOCKER ROOM - NORTH
R114 1/8" = 1'-0"



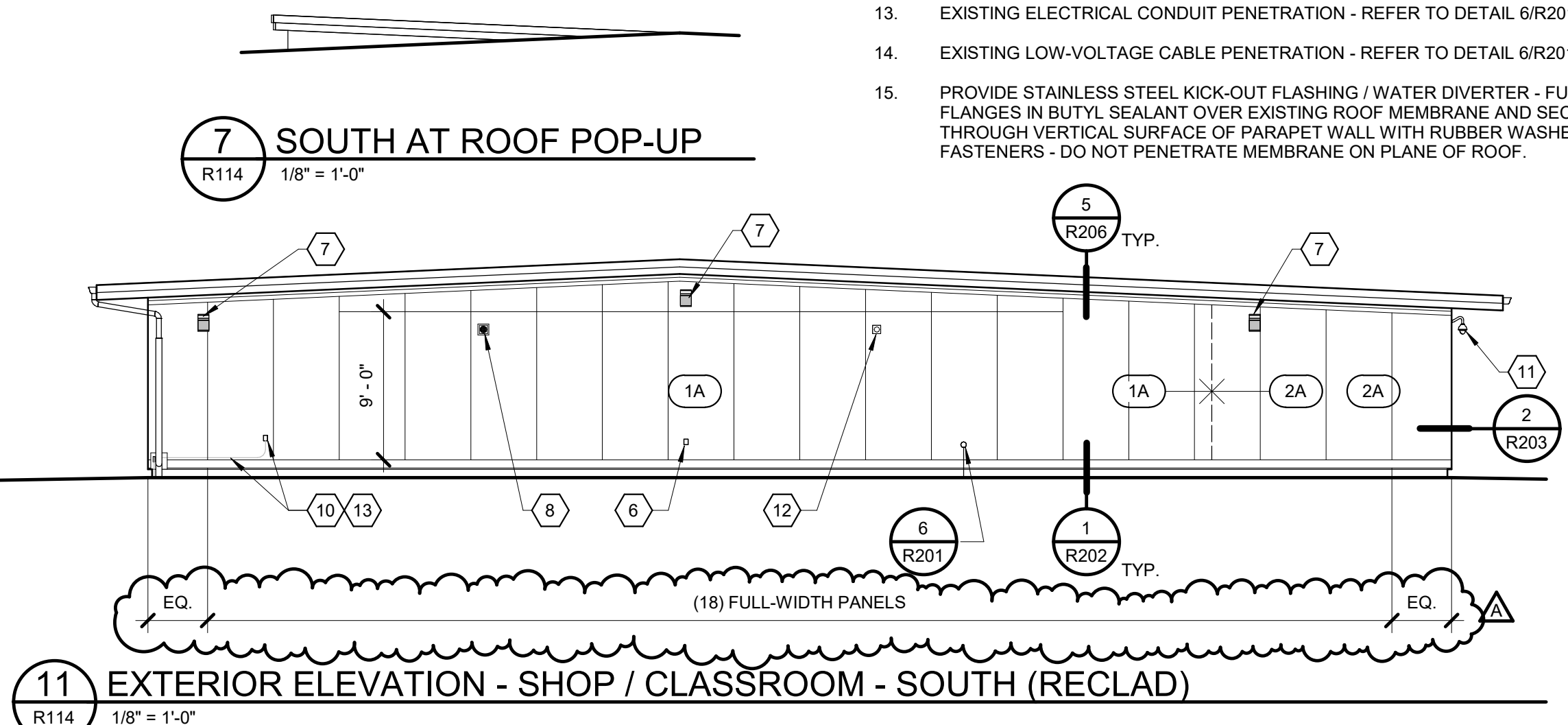
8 STORAGE - WEST
R114 1/8" = 1'-0"



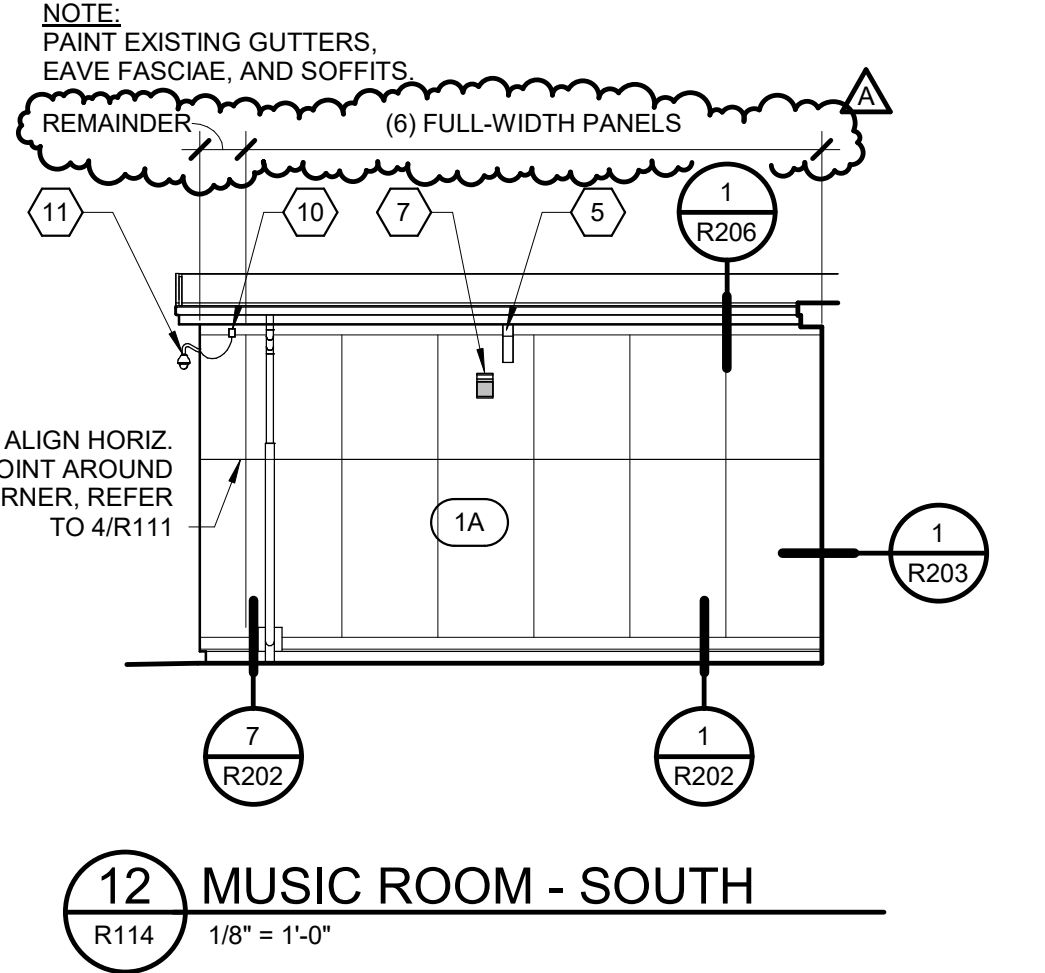
9 CLASSROOM - NORTH
R114 1/8" = 1'-0"



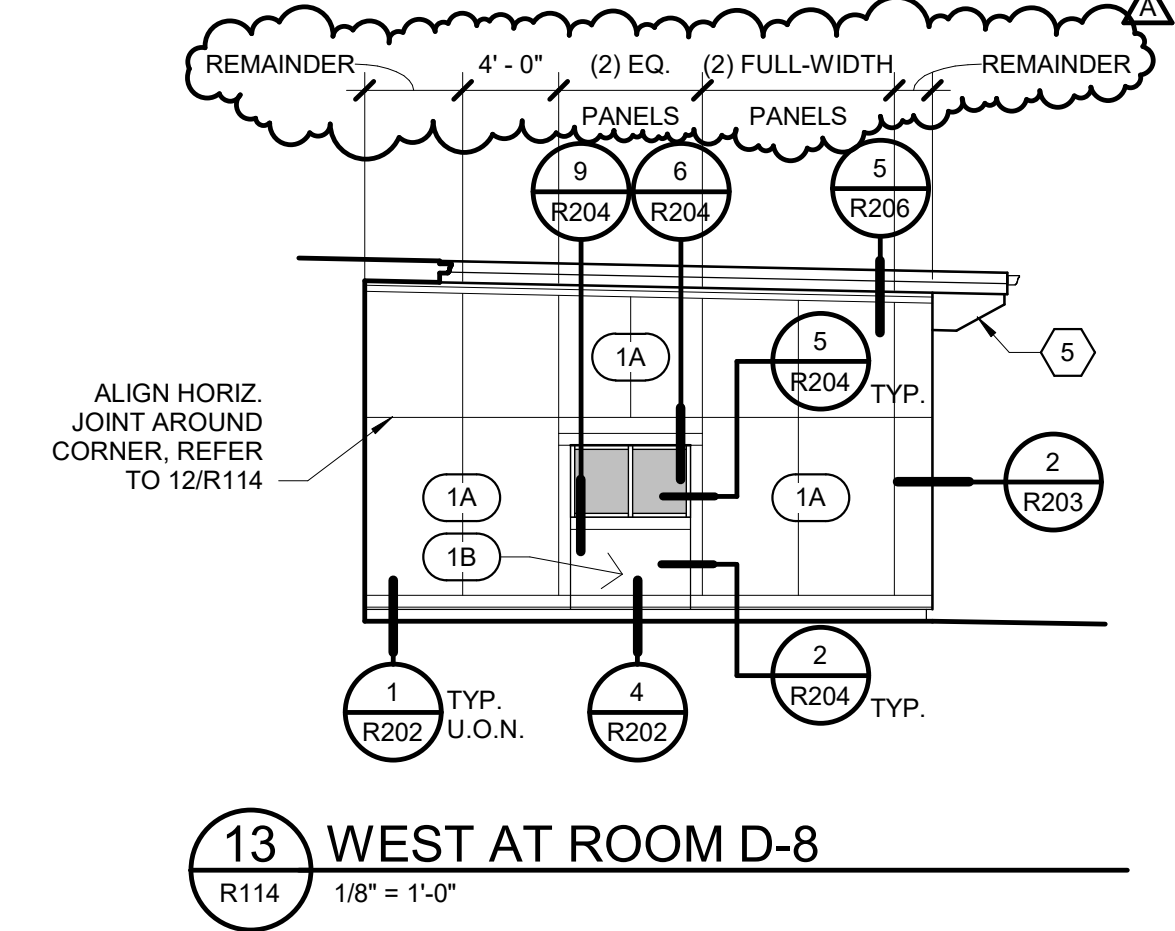
10 CLASSROOM - WEST
R114 1/8" = 1'-0"



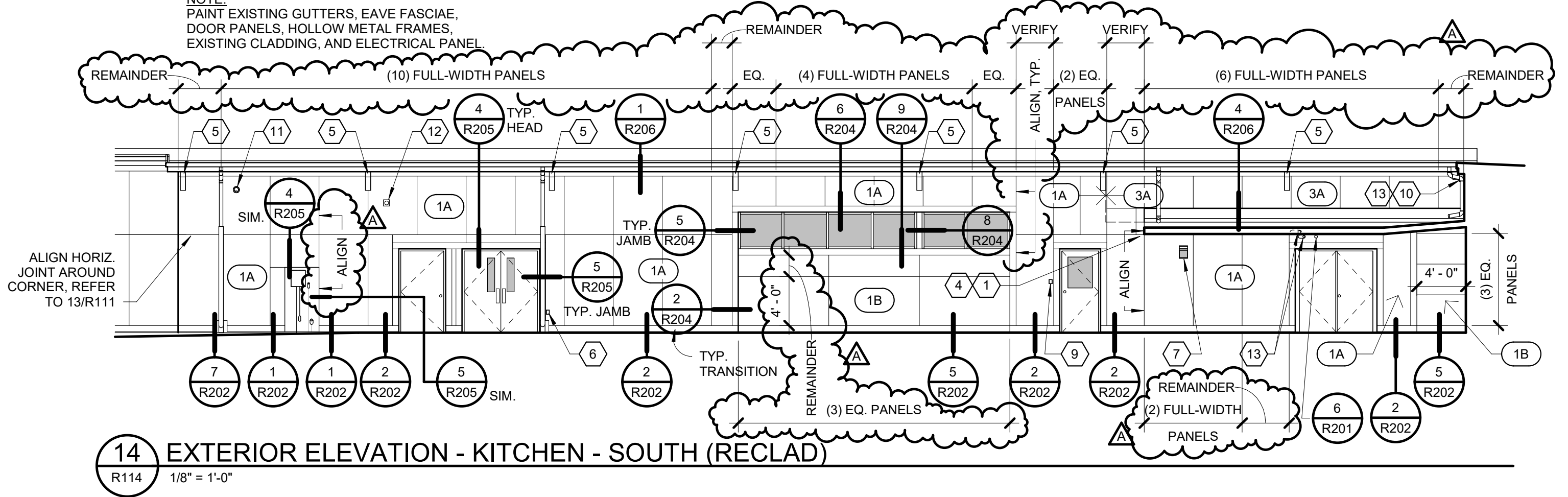
11 EXTERIOR ELEVATION - SHOP / CLASSROOM - SOUTH (RECLAD)
R114 1/8" = 1'-0"



12 MUSIC ROOM - SOUTH
R114 1/8" = 1'-0"



13 WEST AT ROOM D-8
R114 1/8" = 1'-0"



14 EXTERIOR ELEVATION - KITCHEN - SOUTH (RECLAD)
R114 1/8" = 1'-0"