

HILANDER TIMES

December/January

IMPORTANT DATES:

- **December 21 - January 2** - Winter Break
- **January 5-6** - Girls Braided 64 Wrestling Tournament
- **January 15** - MLK Day (No School)
- **January 17** - Fans in the Stands: Unified Awareness Day
- **January 20** - Winter Ball
- **January 26** - Semester Break (No School)
- **January 30** - 5th Annual Teal Out for Team Jules: A Fundraiser for the Julia Hiatt Memorial Scholarship

WHAT'S INSIDE?

LETTER FROM THE PRINCIPAL	PAGE 2
INCLEMENT WEATHER	PAGE 3
LEVY	PAGE 4-5
WINTER BALL	PAGE 6
PARKING	PAGE 7
STAY CONNECTED	PAGE 8
CAREER CENTER NEWS	PAGE 9-10
LIBRARY	PAGE 11
ATTENDANCE LETTER	PAGE 12-13
SKYWARD	PAGE 14
HIGH SCHOOL SUCCESS	PAGE 15-16
ASB OFFICE HOURS	PAGE 17
GOOGLE DRIVE	PAGE 18



A Letter from Principal Walker

Hilander Families,

Winter break is almost here. We hope your family has a wonderful winter break and is able to spend time with those you love.

Trimester 1 ended with great success for our students, and trimester 2 is off to a great start. Please check on your student's attendance and grades frequently. Skyward will have updated information on student progress in their second trimester classes. If your student is struggling in any class, please reach out to your student's teacher and/or counselor. We want to support your efforts to encourage every student attending school regularly, engaging in all of the classes, and making progress to their post secondary goals.

We have conferences on Wednesday, Jan. 17. Conferences will be held 1:15-3:00 and 5:00-7:00. Your participation in conferences is one critical key to partnering with the school in support of your student's academic success and graduation. We will send out a Thrill Share invitation in early January as a reminder.

Forecasting for next year's courses will begin in January. Please talk with your students about their post secondary plans and goals. Selecting courses that will support their plan to achieve their post secondary goals. Grade level class presentations will be January 16, 18, and 19. Forecasting will take place in students' 4th period classes January 22, 23, 29, and 30. Kelso High School has exceptional opportunities for students to learn in rigorous academic courses as well as career preparatory programs. Please encourage your student to forecast for those classes which will challenge them and support their post secondary plans.

If you are the parent/guardian of a student who is a senior, please encourage them to join the Scholarships Google Classroom. Here is a direct link to join that Google Classroom:

<https://classroom.google.com/c/NjAzODc2NTUxNzM0?cjc=u36t6gl> Additionally, please touch base with your senior student's counselor to make sure your student is on track to graduate, or make a plan with your student and counselor to get back on track to graduate. Our teachers, counselors, and staff want to partner with you and your student to ensure that 100% students at Kelso High School graduate prepared for their post secondary plans and goals.

Winter sports and activities are in full swing. If your student participates in any extracurricular activity, we would love to see you here at the school supporting your student. These extracurricular opportunities are key to students' sense of belonging to our Hilander school community.

Thank you for your support!

Sheri Walker
Principal, Kelso High School



WE ARE
♦ RESPONSIBLE
♦ RESPECTFUL
♦ KIND
♦ RESILIENT
HILANDERS



PLAN FOR INCLEMENT WEATHER

Snow, ice, and wind can impact our ability to conduct school activities as planned. Depending on the road conditions, any one of the following may happen:

1) Buses are on snow routes.

All schools and activities continue, but some routes are altered. Snow route details are on our Transportation web page.

2) School is delayed two hours.

Buses pick up students two hours later than normal; no breakfast or AM preschool.

3) School is canceled for the day.

All schools, activities, and athletics are canceled for the day.

4) School is dismissed early.

All activities and athletics are canceled.

HOW WE DECIDE

Before deciding to close schools, district officials consult county road crews and our own employees who are out driving the roads in the early hours of the morning.

Our district covers a large region with steep terrain in places. While roads may be passable in town, conditions may be different just a few miles away. Before we close schools we seek answers to the questions below:

- Can we ensure that buses can navigate streets safely?
- Will students be safe waiting for buses, driving, or walking to school?
- What are the predicted weather conditions later in the school day so we can also ensure students a safe return home?
- Will conditions be substantially improved if we start school late?
- Will we have heat and lights in our schools?

HOW WE INFORM YOU

We attempt to provide you with as much prior notice of school closures as possible. We make every effort to announce changes by 6 AM and we use a variety of methods to get the information to parents and staff.

KSD Website

Check the homepage on kelso.wednet.edu.

KSD App

Download the Kelso School District app and enable notifications for the district and/or specific schools.

Text & Email

We'll use the cell phone number and email you have listed in Skyward. Please make sure your contact information is correct.

Flash Alert

Subscribe to FlashAlert to receive weather-related schedule changes by email and/or text. Push notification is available with the FlashAlert app. To subscribe, look under the "How do I" tab on our website: kelso.wednet.edu.

Radio/Television

Portland TV stations will carry basic information about school closures. For more detailed information, especially about changes in bus routes, please listen to local radio stations.

Social Media

Follow us on Facebook and Twitter @KelsoSchools for updates on school closures and bus routes.

For a recorded message of changes in bus routes and/or school closures, call: (360) 501-1990.

Remember:

No news is good news! We only make announcements when there are changes in normal routine.

Kelso School District Info Line: 501-1990

Kelso School District #458 • 601 Crawford Street, Kelso, WA 98626 • (360) 501-1900 • www.kelso.wednet.edu



K

STRONG SCHOOLS STRONGER COMMUNITY

2024 LEVY RENEWAL

12.6% of the
KSD budget
comes from
local levy
dollars.



Not a new tax.
This replaces an
expiring levy.

VOTE
Feb. 13

Learn more at WeAreKelso.org

Look for your ballot in the mail
in late January, and please vote!





STRONG SCHOOLS STRONGER COMMUNITY

Top 10 Renewal Levy FAQs

In November 2023, Kelso School District asked our community through a ThoughtExchange what questions they had about the **RENEWAL educational program and operations levy** that will be on the **February 13, 2024**, ballot. There were 10 frequently asked questions. [Click here for the answers \(bit.ly/levyFAQ\)](https://bit.ly/levyFAQ).

1 What will the levy pay for?

2 What won't the levy pay for?

3 What is the monthly increase in the levy for me and my family in terms of benefits for kids and staff?

4 If this is a renewal/replacement levy, why does the amount increase?

5 What is the levy amount, estimated levy rate, and collection years for the 2024 levy?

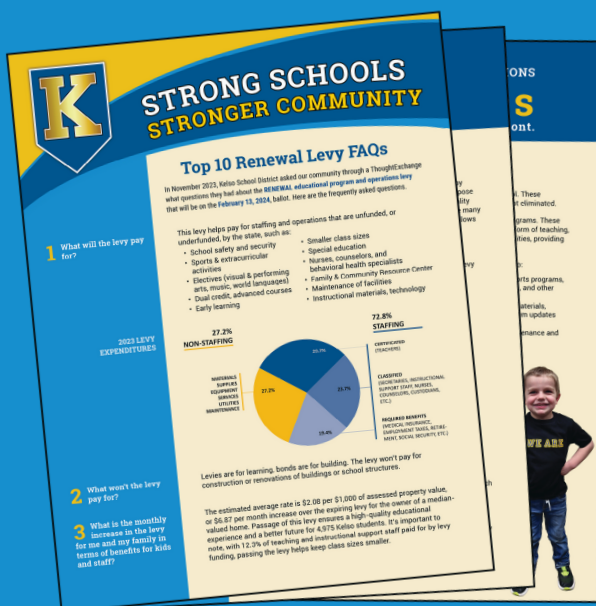
6 What are the highest priorities for the district and schools if the levy passes?

7 If the levy doesn't pass, what will happen to the following staffing funded by levy dollars: school safety and security, sports and activities, Family & Community Resource Center, counseling and nursing supports, teachers and instructional staff?

8 How does levy funding affect class sizes?

9 What steps are taken to ensure fiscal responsibility?

10 When will the next bond be proposed?



YOU make a difference!

Register to vote at: voter.votewa.gov

Learn more at WeAreKelso.org

Look for your ballot in the mail in late January, and please vote!



Winter Ball

20

January 2024

Kelso High School

If you would like to bring an out of school guest,
Guest Dance Passes are available in the Main Office.
They are due Mrs. Sari no later than January 12th.
No exceptions will be made.

Information on ticket prices and sale times will
follow after Winter Break

Please reach out to haley.cox@kelsosd.org with
questions or financial hardships as dance ticket
scholarships are available.

Hilander **PARKING**

**KELSO HIGH SCHOOL PARKING PERMITS
ARE NOW AVAILABLE IN THE MAIN OFFICE.**

PERMITS ARE REQUIRED TO PARK IN KHS PARKING LOT

**REMEMBER THAT THE APPLICATION REQUIRES
A PARENT SIGNATURE, VALID PROOF OF INSURANCE,
VALID WASHINGTON STATE DRIVER'S LICENSE,
AND YOU MUST SIGN THE "NEED TO KNOW" FORM
FROM THE KHS STUDENT HANDBOOK**

Transportation

**BUS PASSES ALLOW STUDENTS TO RIDE A BUS OTHER
THAN THEIR REGULAR BUS TO OR FROM SCHOOL.
PLEASE CALL OR SEND A NOTE WITH YOUR STUDENT
TO TAKE TO THE ATTENDANCE OFFICE THAT INCLUDES
THE STUDENTS NAME, DATE OF REQUEST, BUS ROUTE,
WHO ARE THEY GOING HOME WITH AND THE ADDRESS
OF THAT STUDENT.**

THE ATTENDANCE OFFICE IS CLOSED AFTER SCHOOL.

STAY

CONNECTED

**THE KELSO SCHOOL DISTRICT
HAS A NEW WEBSITE!!**



STEP 1

IN YOUR APP STORE SEARCH
FOR KELSO SCHOOL DISTRICT.
BE SURE TO LOOK FOR THE "K".

STEP 2

ONCE YOU ARE IN THE APP GO
TO SETTINGS TO CHOOSE THE
SCHOOLS YOU WOULD LIKE TO
RECEIVE NOTIFICATIONS FOR!



Check it out today!!!



Forecasting Focus

- Forecasting for the 24–25 school year will take place during 4th period on January 22, 23, 29, 30.
- In preparation for forecasting, students have updated their High School and Beyond Plan (HSBP), completed a credit check, and learned about Career Pathways.
- Students are encouraged to take elective courses based on their selected Career Pathway as listed on their HSBP.
- Students are encouraged to take "Stretch Courses" to challenge themselves.

CTE Course Options

We are excited to be offering several new advanced, off-campus CTE courses! These courses are for students in grades 11–12. Click the link below to learn more!

CLICK



SOPHOMORE COURSE REQUESTS

(CURRENT FRESHMAN, CLASS OF 2022)

Last Name: _____ First Name: _____ Middle Initial: _____

Grade level required courses and advanced course options are listed below:

- Language Arts 10: (2 trimesters) OR Honors (LAN10, LAN11)
- Modern World History/Geography: (2 trimesters) OR AP World History (3 trimesters: SOC100, SOC101, SOC102)
- Mathematics: (2 trimesters) Math level is determined by your current Math course and teacher recommendation
- Biology Ecology/Genetics: (2 trimesters) OR BioMedical (SOC105, SOC106) OR UW Chemistry (SOC107, SOC108)
- Physical Education: (1 course recommended each year) (4 total trimesters required for graduation)
- World Language: (2 full years of same language required, 3 years recommended)
- Elective course options include: Fine Arts, World Languages, and/or CTE courses.

Career Pathway: Please select elective courses based on course sequences and/or courses aligned to your Career Pathway.

□ Agriculture Sciences □ Business & Marketing □ Family & Consumer Sciences □ Health Sciences □ Skilled & Technical Sciences □ STEM

***Find the courses you want using the course catalog and list course code and course name on the selection table below:

Course Code	Course Name	Advanced Course Options	CREDIT CHECK	
<input type="checkbox"/> PED100, 101, 102	OPTIONAL Zero Hour Conditioning (8:45 am-7:45 am)			
<input type="checkbox"/> LAN101	Language Arts 10A	<input type="checkbox"/> Honors LA 10A	Language Arts (4 credits)	
<input type="checkbox"/> LAN102	Language Arts 10B	<input type="checkbox"/> Honors LA 10B	LA 101 102 103 104 105 106 107 108 109 110 111 112	
<input type="checkbox"/> SOC110	Modern World History A	<input type="checkbox"/> AP World History (3 Tr)	Math (3 credits)	
<input type="checkbox"/> SOC111	Modern World History B	<input type="checkbox"/> AP World History (3 Tr)	AL01 AL02 AL03 AL04 AL05 AL06 AL07 AL08 AL09 AL10 AL11 AL12	
<input type="checkbox"/> SCI101	Biology: Ecology	<input type="checkbox"/> Biomedical Science	Science (3 credits)	
<input type="checkbox"/> SCI102	Biology: Genetics	<input type="checkbox"/> Biomedical Science	SC101 SC102 SC103 SC104 SC105 SC106 SC107 SC108 SC109 SC110 SC111 SC112	
<input type="checkbox"/> MTH _____	Math: _____	<input type="checkbox"/> UW Chemistry	Social Studies (3 credits)	
<input type="checkbox"/> MTH _____	Math: _____		SS101 SS102 SS103 SS104 SS105 SS106 SS107 SS108 SS109 SS110 SS111 SS112	
			CTE (1 credit)	
			CTE101 CTE102 CTE103 CTE104 CTE105 CTE106 CTE107 CTE108 CTE109 CTE110 CTE111 CTE112	
			Health (.5 credit)	
			HE101 HE102 HE103 HE104 HE105 HE106 HE107 HE108 HE109 HE110 HE111 HE112	
			PE (2 credits)	
			PE101 PE102 PE103 PE104 PE105 PE106 PE107 PE108 PE109 PE110 PE111 PE112	
			Art (2 credits)	
			AR101 AR102 AR103 AR104 AR105 AR106 AR107 AR108 AR109 AR110 AR111 AR112	
			World Language (2 credits)	
			WL101 WL102 WL103 WL104 WL105 WL106 WL107 WL108 WL109 WL110 WL111 WL112	
			Pathway Electives (8-9 credits)	
			PE101 PE102 PE103 PE104 PE105 PE106 PE107 PE108 PE109 PE110 PE111 PE112	

REQUIRED: You **MUST** list at least 4 to 6 elective alternates on the table below.

Please transfer the course code information from this forecast sheet onto your High School and Beyond Plan (HSBP)

Updated: 11.6.23

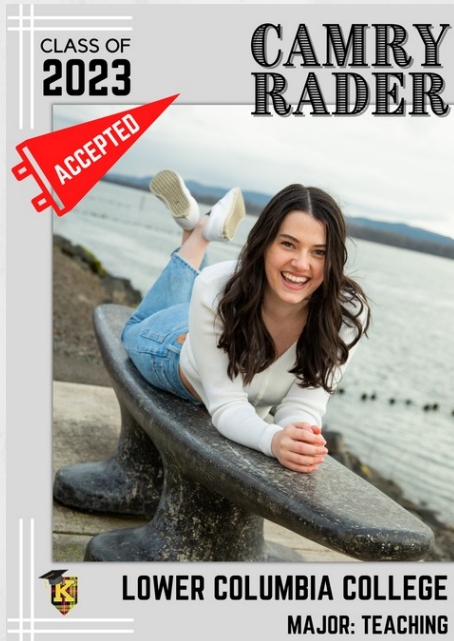
Trending Terms

- **Xello:** Career Exploration Tool
- **HSBP:** High School Beyond Plan
- **Stretch Course:** A class that is challenging or pushes student learning outside of an intended career pathway
- **FAFSA:** Free Application for Federal Student Aid
- **WASFA:** WA Application for State Financial Aid



Accepted Posters

- Seniors that have been accepted into a postsecondary program or college are encouraged to fill out our google form for their "Accepted" poster.
- Posters are showcased on Main Street.
- Click link below to access form.



CLICK



Senior Suggestions

- All Seniors complete a HSBP, create a resume, & participate in an Exit Interview. These graduation requirements are completed in American Government classes each trimester.

click here!

Kelso High School
HIGH SCHOOL AND BEYOND PLAN

Student Name: *Camry Rader* Class: *2023*

FRESHMAN			SOPHOMORE			JUNIOR			SENIOR		
T1	T2	T3	T1	T2	T3	T1	T2	T3	T1	T2	T3
ELT002	BUS098	BUS273	ART101	IND100	ELT004	ELT010	IND100	ART101	IND101	WHEAT01	
HFU025	IND099	ELT02F	ELT030	IND222	IND010	ELT010	IND030	ART101	IND101	WHEAT01	
IND088	IND028	IND033	MTH020	MTH020	IND010	MTH020	IND010	LA101	IND101	WHEAT01	
MTH01E	IND032	MTH01F	SC010	SC010	IND010	PED100	MTH020	LA101	IND101	WHEAT01	
SC001	PED000	SC002	SC010	SC011	PED102	SC010	SC010	PE	PED100	SC010	

Transcript Review
☒ I am on track to graduate.
☐ I am NOT on track to graduate.

10th Grade Career Pathway
☐ Agriculture Sciences
☐ Business & Marketing
☐ Family & Consumer Sciences
☐ Health Science
☐ Social & Technical Sciences
☐ STEM

11th Grade Career Pathway
☐ Agriculture Sciences
☐ Business & Marketing
☐ Family & Consumer Sciences
☐ Health Science
☐ Social & Technical Sciences
☐ STEM

12th Grade Career Pathway
☐ Agriculture Sciences
☐ Business & Marketing
☐ Family & Consumer Sciences
☐ Health Science
☐ Social & Technical Sciences
☐ STEM

CREDIT CHECK
 Language Arts (4 credits)
 Math (3 credits)
 Science (3 credits)
 Social Studies (3 credits)
 Health (2.5 credits)
 Physical Education (2 credits)
 Foreign Language (2 credits)
 Fine Arts (2 credits)
 Career/Technical Education (2 credits)
 Total Credits: 28

All seniors are encouraged to complete the FAFSA or WASFA. The FAFSA application has big changes this year and the application will be open on or before Dec. 31st. These financial aid applications are the gatekeepers to all types of funding for most postsecondary plans. Questions? nicole.johnson@kelsosd.org

Grade-Level Timelines

- We provide grade level timelines for students and parents as a way to stay on track with postsecondary goals. These timelines are posted on the Career Center website.

www.khscareercenter.com

CLICK

9th/10th
Grade

CLICK

11th
Grade

CLICK

12th
Grade

Follow up Phrases

Start a conversation with your student:

- What classes are you forecasting for?
- What is your "Career Pathway"?
- What "stretch courses" are you planning to take next year?
- What are your top 3 career choices?
- What type of education or training is required for your career choices?

24/25 course catalog coming soon!



KHS LIBRARY

January



Genre of the Month: Mystery.

January's Genre of the Month in the KHS Library is: Mystery!

Feed your inner detective and check out one of the selected mystery books on display. Sleuth your way through the twists and turns, and all those jaw-dropping endings!

Library Contest

January's library contest is a Scavenger Hunt! There will be prizes for the winners, so stop by the library for official rules, and to enter!

Book Requests

Not seeing the book you wanted? There is a clipboard on the library counter where you can request books to be purchased! We want to know what you want to read, so write them down!

Email Reminders

Be sure to check your school email for library reminders. You will receive an email on the day your books are due, as well as follow up reminders for lost books, and late book fees.


KHS Library.

MTRF: 7 AM to 3 PM

W: 7:30 AM to 1:30 PM

mrinker@kelso.wednet.edu

360.501.1829



Dear Parent/Caregiver,

This year, Kelso High School is making a special effort to ensure that all students fully benefit from their education by attending school regularly. Student attendance is an essential first step for students to learn. We want you to know that our school is committed to supporting your student(s) to attend and access their education. Your students' future is our first priority, and we want to partner with you to ensure their success.

DID YOU KNOW?

- By being present at school, your child learns valuable social skills and has the opportunity to develop meaningful relationships with other students and school staff.
- Absences can be a sign that a student is losing interest in school, struggling with schoolwork, dealing with a bully or facing some other potentially serious difficulty.
- Starting in kindergarten, too many absences (excused and unexcused) can cause children to fall behind in school.
- Missing 10 percent (just two days a month or about 18 days in a year) increases the chance that your student will not read or master math at the same level as their peers.
- Students can still fall behind if they miss just a day or two days every few weeks.
- By 6th grade, absenteeism is one of three signs that a student may drop out of High School.
- By 9th grade, regular and high attendance is a better predictor of graduation rates than 8th grade test scores.

WHAT WE NEED FROM YOU

We miss your student(s) when they are not in school and we value their contributions to our community. We would like you to help ensure that your student attends regularly and is successful in school. If your student is going to be absent, please contact the Attendance Office at 360.501.1854 or complete an absence request in Skyward.

Sincerely,

Sheri L. I. Walker



Principal, Kelso High School



What you can expect from Kelso High School and Kelso SD for attendance support:

Student accrues 3 unexcused absences within a month

School team meeting with student, parent, counselors (other staff as needed)

- i. Attendance agreement
- ii. Risk/needs assessment/questionnaire
- iii. School based solutions

2. Student accrues 7 unexcused absences

Attendance and Reengagement Program (ARP) workshop referral with Educational Service District (ESD) (virtual, every other Wed @ 4pm) for both student and parent

- i. Review why attendance matters, how to excuse an absence and what for (school rep), Becca Bill & truancy process (probation officer). Statistics on attendance importance will be presented.
 1. Break out rooms with ARP case manager & school rep
 - a. Review original Risk/needs assessment/barriers questionnaire to address concerns and acknowledge progress.
 - b. Review current skyward account for accuracy
 - c. Either direct referral to board or give students one week to re-engage in school. Students will be referred to community resources and progress checked within a week.

3. Student accrues 10 unexcused absences

Board referral (process of creating an action plan)

- i. Representatives from community resources
 1. Mental health, school rep, ARP case manager, alternative education, Family Community Resource Center, Ethnic support council, etc. (tailored for student needs)
 2. Release of Information (ROI) signed at this level
- ii. Complete board agreement form, address barriers, refer to services/set up intakes
- iii. Introduce ARP case manager, follow up on services referred, board agreement, attendance expectations

4. Student does NOT follow board agreement or attendance does NOT improve

Exited from ARP services (ESD Advocate will send Truancy Liaison a report to add to the petition).

Court petition – Kelso School District representative completes and attends court and continues to monitor student attendance

Where can you find other assistance?

We understand that situations occur and additional support may be needed to ensure the success of your student. The Kelso School District takes pride in connecting our families to community providers and resources, fostering a positive and resilient home environment. Here is a list of a few resources you and your student may find beneficial.

- At Risk Youth (DSHS) 1-866-764-2233
- Columbia Wellness/ WISE 360-423-0203
- CORE Health 360-200-5419
- Youth and Family Link 360-423-6741
- Parents Place 360-414-9212
- Strengthening Families 360-261-3971

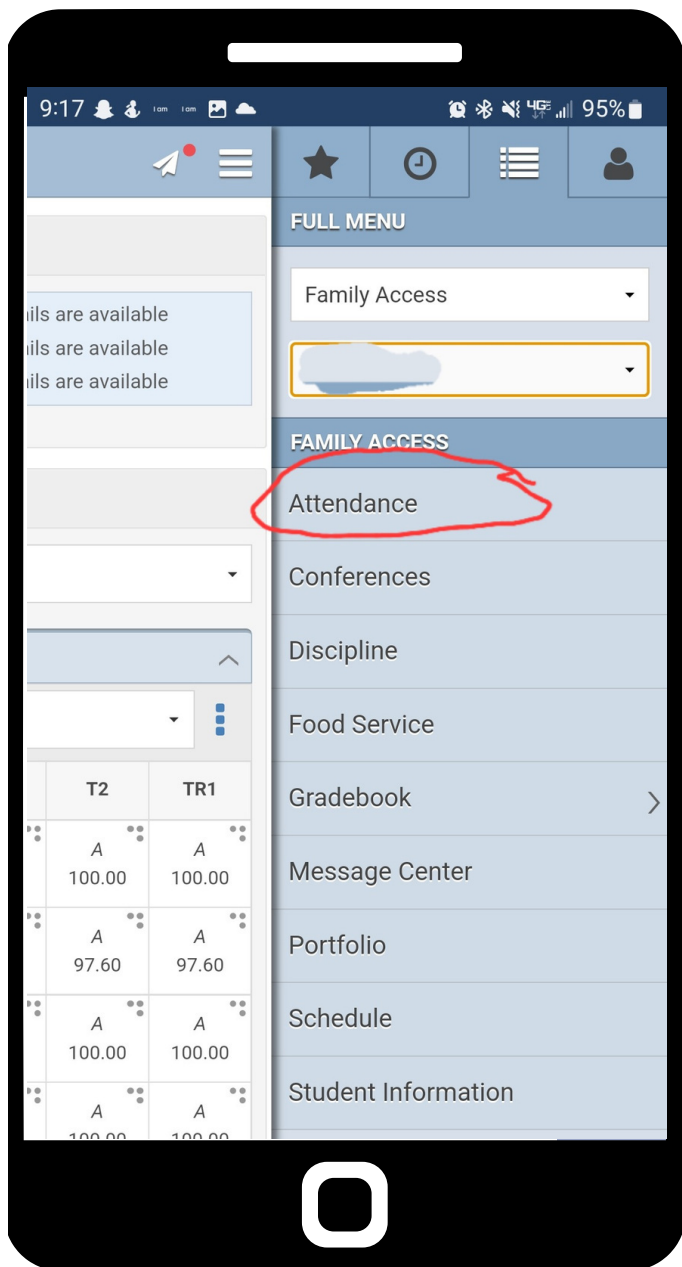


FAMILY MOBILE APP

All the benefits of Family Access on your phone

Entering your student's attendance

DOWNLOAD TODAY, AND STAY UP-TO-DATE
ON THE GO



How - To

- Log onto your Skyward account on the App
- Using the drop-down menu, choose your student
- Choose the date (date range if multiple days)
- If the absence will not be a full day, click off the toggle switch and fill in the time
- Using the drop-down menu, choose an absence reason
- Hit 'submit' when you are finished
- **THIS CAN BE DONE ON THE COMPUTER AS WELL.**

Find out more at the link below

<https://www.kelso.wednet.edu/o/ksd/page/skywardapp-attendance>

DID YOU KNOW?

9TH GRADE IS CONSIDERED THE **MAKE OR BREAK** YEAR!

9th Graders who pass all courses
in the 9th grade year are **4X**
more likely to graduate high school
than their off-track peers!



ATTENDANCE MATTERS

9th Graders with **0-4 absences** have
an **87% chance of graduating on
time** and 9th graders with **10-14
absences** have a **41% chance of
graduating on time.**

9TH ON-TRACK MATTERS MOST

9th Grade On-Track is a **better
predictor of graduation** than all other
factors including gender, race,
socioeconomic status and mobility

ATTENDANCE AFFECTS G.P.A.

The majority of students
who earned a **3.0+ G.P.A**
miss **fewer than 5 days** of
school in a school year.

G.P.A. & COLLEGE/CAREER

G.P.A at the end of 9th
grade year is a **predictor of
college enrollment and
persistence.**

**IN WASHINGTON STATE, ON-TRACK MEANS PASSING
EVERY CLASS. EVERY SINGLE CLASS MATTERS!**

**CHECK IN WITH A 9TH GRADE TEACHER, COUNSELOR
OR ADMINISTRATOR TO LEARN MORE!**

¿SABÍAS QUÉ?

¡EL 9º GRADO SE CONSIDERA EL AÑO DECISIVO!

Los estudiantes de 9º grado que aprueban todos sus cursos en el grado 9 tienen **4X** más probabilidad de graduarse de la escuela secundaria que sus compañeros que no están al corriente.



LA ASISTENCIA IMPORTA

Los estudiantes de 9º grado con 0-4 ausencias tienen un 87% de probabilidad de graduarse a tiempo y los estudiantes de 9º grado con 10-14 ausencias tienen un 41% de probabilidad de graduarse a tiempo.

9º AL CORRIENTE IMPORTA MÁS

Estar al corriente en el 9º grado predica mejor la graduación que todos los demás factores, incluidos el género, la raza, el estatus socioeconómico y la movilidad.

LA ASISTENCIA AFECTA EL PROMEDIO DE CALIFICACIONES

La mayoría de los estudiantes que obtuvieron un promedio de calificaciones de 3.0+ pierden menos de 5 días de escuela en un año escolar.

EL PROMEDIO DE CALIFICACIONES Y LA UNIVERSIDAD/CARRERA

El promedio de calificaciones al final de 9º grado predica la inscripción universitaria y la persistencia.

**EN EL ESTADO DE WASHINGTON, ESTAR AL CORRIENTE SIGNIFICA
APROBAR TODAS LAS CLASES. ¡CADA CLASE IMPORTA!**

**¡CONSULTA CON UN MAESTRO, CONSEJERO O ADMINISTRADOR
DE 9º GRADO PARA OBTENER MÁS INFORMACIÓN!**

OFFICE HOURS

ASB

STUDENT HOURS

BEFORE & AFTER SCHOOL
DURING LUNCHES

COMMUNITY HOURS

M, T, TH, F

7:30-12:00 & 2:30-3:15

WEDNESDAYS

7:30-1:15

DURING THE SCHOOL YEAR, THE ASB OFFICE
WILL BE OPEN ON DAYS THAT STUDENTS ARE
PRESENT



GOOGLE DRIVE

AS PART OF THE DISTRICT'S "CAREER, COLLEGE, AND COMMUNITY READY" GOAL, OUR STUDENTS WILL BE UTILIZING GOOGLE DRIVE ACCOUNTS THAT ALLOW THEM TO PRODUCE, SHARE, AND EASILY ACCESS ASSIGNMENTS, DOCUMENTS AND PROJECTS USING ONLINE TOOLS.

GOOGLE DRIVE PROVIDES FREE WORD PROCESSING, SPREADSHEET, AND PRESENTATION SOFTWARE THAT STUDENTS CAN USE TO CREATE DOCUMENTS FROM ANY COMPUTER THAT HAS INTERNET ACCESS. THE DISTRICT HAS ITS OWN GOOGLE DRIVE PORTAL THAT ALLOWS FOR THE CREATION OF ACCOUNTS FOR OUR STUDENTS. THESE ARE NOT TO BE TREATED AS PRIVATE ACCOUNTS, BUT ARE PROVIDED FOR THE PURPOSE OF SCHOOL RELATED WORK AND COMMUNICATIONS. THE BENEFIT OF GOOGLE DRIVE IS THAT STUDENTS WILL HAVE ACCESS TO THEIR DOCUMENTS BOTH AT HOME AND SCHOOL ON ANY COMPUTER THAT HAS ACCESS TO THE INTERNET. IN ADDITION TO FAMILIAR TOOLS LIKE GOOGLE DRIVE, CLASSROOM, KEEP, AND SITES, SECONDARY STUDENTS WILL ALSO HAVE ACTIVE GMAIL ACCOUNTS THAT CAN BE USED FOR SCHOOL RELATED PURPOSES. WE ARE USING A MONITORING TOOL CALLED BARK THAT ALERTS US TO INAPPROPRIATE OR DANGEROUS CONTENT. FLAGGED ACTIVITY WILL BE REVIEWED AND FOLLOWED UP ON IF NEEDED. WE ENCOURAGE YOU TO DISCUSS WITH YOUR CHILD HOW HE/SHE IS USING GOOGLE DRIVE IN SCHOOL.



WE ARE RESPONSIBLE ♦ RESPECTFUL ♦ KIND ♦ RESILIENT HILANDERS

All Kelso schools take the Harassment, Intimidation and Bullying (HIB) of students very seriously. According to the most recent Healthy Youth Survey, the majority of students in Kelso schools indicate that they feel safe at school. Any student, parent or other interested adult can report an incident of HIB using the Kelso Incident Report Form (which is available on the website and in the main office of all schools).

Harassment, Intimidation or Bullying (HIB) is an intentional electronic, written, verbal, or physical act that:

- Physically harms a student or damages the student's property.
- Has the effect of substantially interfering with a student's education.
- Is so severe, persistent, or pervasive that it creates an intimidating or threatening educational environment.
- Has the effect of substantially disrupting the orderly operation of the school.

If you have any questions about this policy please contact the principal of your child's school, or the Director of Student Services,, Don Iverson, at the Kelso School District office.

Kelso School District #458 complies with all federal rules and regulations and does not discriminate in any programs or activities on the basis of sex, race, creed, religion, color, national origin, age, veteran or military status, sexual orientation, gender expression or identity, disability, or the use of a trained dog guide or service animal and provides equal access to the Boy Scouts and other designated youth groups listed in Title 36 of the United States Code. The following employee(s) has been designated to handle questions and complaints of alleged discrimination: Holly Budge, Director of Human Resources, the school district's Title VII Officer and ADA Coordinator. People of disability may request reasonable accommodation in the hiring process by contacting, Holly Budge, Director of Human Resources, 601 Crawford Street, Kelso, WA 98626 or (360) 501-1924.

Inquiries regarding compliance procedures regarding students may be directed to Gunnar Guttormsen, Director of Student Services, the school district's Title IX & Section 504 Coordinator, 601 Crawford Street, Kelso, WA 98626 (360) 501-1900.

KELSO SCHOOL DISTRICT IS A DRUG AND TOBACCO-FREE WORKPLACE