

NEWSLETTER CONTENT:

Page 2 - Letter from our Principals

Page 3 - Math Night

Page 4 -Emergency Info

Page 5 - Inclement Weather

Page 6 - Snow Routes

Page 7 - Blue Jay Reminders

Page 8 - Renewal Levy

Page 9 - 2023-2024 Calendar

Page 10 - Lunch Menu

Page 11 - Important Butler Acres Info

January

DON'T MISS THIS!

DECEMBER 21 Winter Break (no
- JANUARY 2 school)

JANUARY 3 Students Return

JANUARY 8-10 NO Explorer's Club

JANUARY 15 Martin Luther King
Jr. Day (no school)

JANUARY 26 Semester Break
(no school)

IMPORTANT INFO

SCHOOL HOURS

Monday, Tuesday, Thursday and Friday
8:45am- 3:25pm

Wednesdays are Early Release at 1:55

LUNCH TIMES

Kinder-2nd grade- 11:40 to 12:10
3rd-5th grade- 12:10 to 12:40



A Message From Our Principals

Dear Families,

Thank you for your support and engagement with the staff and students of Butler Acres in 2023. We really value your continued involvement and partnership in our shared work. We look forward to resuming our work in January of 2024. In the meantime, enjoy your winter experiences, make family memories, and keep your little blue jay(s) healthy and happy.

Many adults make resolutions as a part of the new calendar year. We invite you to consider making family resolutions and supporting your children in making their own resolutions for a successful year. Here are a few family resolution ideas to consider as in your household:

- Cook dinner together one night each week
- Teach your child(ren) about their family history and share family photos and stories
- Replace screen time with a family walk
- Take turns sharing favorite songs and movies between kids and adults
- Make family plans for reuniting in emergencies that may happen at home (such as floods or fires)
- Enjoy a weekly family game night

Here are a few resolution ideas to have your child consider:

- Make a new friend
- Do random acts of kindness
- Do chores or homework without being asked
- Learn about a culture – language, food, traditions, etc. that you don't currently know about
- Start a journal or a diary
- Read for 30 minutes every night

Setting goals and assessing them is an important action taken by successful people. Thank you for considering doing this as a family in the coming year.

Together, we can model, teach, practice, and celebrate positive actions for the children who depend on us in their lives. We have an opportunity to improve our community through our positive influence and example. We want to thank you for being someone important in the lives of others. We also want to encourage you to be intentional about setting a high standard and example for children. We join you in remaining committed to doing this for our learning community. Please let us know how we can best serve your child and family in the coming months of this school year. We appreciate your feedback and we wish you Happy Holidays and a Happy 2024!

Sincerely,

Mark Connolly, Principal and Sarah Dahl, Assistant Principal



5x3

Butler Acres Math Night

I ♥ Math



Please join us for an opportunity to learn more about what your student(s) are learning in math by hearing about some specific standards in each grade level and taking home a way to practice those standards.

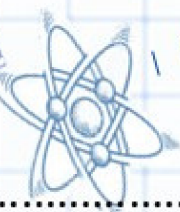


9÷3

1 2 3



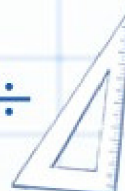
X



I ♥ Math



÷



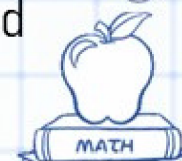
5x3



6x8



3-1=2



X

I ♥ Math



Date: January 24th

Time: 6:00-7:30

Location: Meet in Gym

You will have the opportunity to participate in up to 3 Grade Level Sessions to share games/activities that will help support standards being taught. Please choose up to 3 grade levels you hope to join by writing them in below.

Please return this portion back to school.

Student Names: _____

Total Number of Adults: ____ Number of Children: ____

Grade Level Sessions we will be attending: _____, _____, _____

KSD SAFE SCHOOLS EMERGENCY INFORMATION



LOCKDOWN

DEFINITE THREAT OF VIOLENCE OR HARM

- **CLOSE/LOCK** external entrances
- **CLOSE/LOCK** classroom doors - stay out of sight
- **HEAD COUNT** & collect students
- **BARRICADE** / defend / run
- **MONITOR** communications



SECURE & TEACH

POTENTIAL THREAT OF HARM

- **CLOSE/LOCK** classroom doors
- **HEAD COUNT** & collect students
- **CONTINUE TEACHING** as usual
- **MONITOR** communications
- **PREPARE** to upgrade response
- **WAIT** for "all clear"



SHELTER IN PLACE

HAZARDOUS OUTDOOR ATMOSPHERE

- **SHELTER** in a safe area
- **ISOLATE** your environment
- **SHUT OFF** HVAC / air systems
- **HEAD COUNT** & collect students
- **MONITOR** communications
- **PREPARE** to evacuate
- **WAIT** for "all clear"



EVACUATE

FIRE / INTERNAL THREAT

- **EXIT** building to nearest rally point
- If **RALLY POINT** is unsafe, go to a safe area
- **HEAD COUNT** & collect students
- **PREPARE** to reunify

KEY REMINDERS

- **NO PROPPED OPEN DOORS**
- **MAINTAIN ADULT VISIBILITY**
- **SEE or HEAR SOMETHING, SAY SOMETHING**

EMERGENCY CONTACTS

911

SUICIDE HOTLINE	1.800.273.8255
COWLITZ CO. CRISIS LINE	360.425.6064
KELSO POLICE	360.423.1270
SHERIFF	360.577.3092
SEXUAL ASSAULT HOTLINE	1.800.656.4673
CHILD PROTECTIVE SERVICE	360.501.2600
DOMESTIC VIOLENCE	1.800.799.7233 or text LOVEIS to 22522
POISON CONTROL	1.800.222.1222
DRUG/ALCOHOL HOTLINE	1.800.662.4357



PLAN FOR INCLEMENT WEATHER

2022-2023 Kelso School District

Snow, ice, and wind can impact our ability to conduct school activities as planned. Depending on the road conditions, any one of the following may happen:

- 1) Buses are on snow routes.**
All schools and activities continue, but some routes are altered. Snow route details are on our Transportation web page.
- 2) School is delayed two hours.**
Buses pick up students two hours later than normal; no breakfast or AM preschool.
- 3) School is canceled for the day.**
All schools, activities, and athletics are canceled for the day.
- 4) School is dismissed early.**
All activities and athletics are canceled.

HOW WE DECIDE

Before deciding to close schools, district officials consult county road crews and our own employees who are out driving the roads in the early hours of the morning.

Our district covers a large region with steep terrain in places. While roads may be passable in town, conditions may be different just a few miles away. Before we close schools we seek answers to the questions below:

- Can we ensure that buses can navigate streets safely?
- Will students be safe waiting for buses, driving, or walking to school?
- What are the predicted weather conditions later in the school day so we can also ensure students a safe return home?
- Will conditions be substantially improved if we start school late?
- Will we have heat and lights in our schools?

HOW WE INFORM YOU

We attempt to provide you with as much prior notice of school closures as possible. We make every effort to announce changes by 6 AM and we use a variety of methods to get the information to parents and staff.

KSD App

Download the Kelso School District app and enable notifications for the district and/or specific schools.

Text & Email

We'll use the cell phone number and email you have listed in Skyward. Please make sure your contact information is correct.

Flash Alert

Subscribe to FlashAlert to receive weather-related schedule changes by email and/or text. Push notification is available with the FlashAlert app. To subscribe, look under the "How do I" tab on our website: kelso.wednet.edu.

Radio/Television

Portland TV stations will carry basic information about school closures. For more detailed information, especially about changes in bus routes, please listen to local radio stations.

Social Media

Follow us on Facebook and Twitter @KelsoSchools for updates on school closures and bus routes.

For a recorded message of changes in bus routes and/or school closures, call: (360) 501-1990.

Remember:

No news is good news! We only make announcements when there are changes in normal routine.



Kelso School District Info Line: 501-1990

Kelso School District #458 • 601 Crawford Street, Kelso, WA 98626 • (360) 501-1900 • www.kelso.wednet.edu

SNOW ROUTES

Kelso Schools Transportation Department

2023-2024 -- AM SNOW ROUTES

*Only stops affected by snow routes are listed below, stop areas not listed will be serviced as usual
AM buses arrive at pickup location approximately 10 minutes before scheduled leave time

ROUTE	AREA	BUS PICKS UP HERE	REGULARLY SCHED LEAVE TIME		2 HOUR DELAY LEAVE TIME	
			HS/MS	ELEMENTARY	HS/MS	ELEMENTARY
1	Ostrander Rd	Ostrander & N. Pacific @ park-n-ride	7:10	8:20	9:00	10:05
3	Holcomb Acres Rd	Holcomb Loop Rd	7:05	8:20	9:05	10:10
4	Headquarters Rd	N. Pacific & Headquarters	7:00	8:10	8:50	10:00
6	River View, Mtn. View	South & Beulah	~~~~	8:05	~~~~	10:05
8	Hazel Dell Rd	Hazel Dell Rd @ Leckler Creek Rd	~~~~	8:20	~~~~	10:20
9	Hazel Dell Rd	Hazel Dell Rd @ Leckler Creek Rd	7:00	~~~~	9:15	~~~~
10	Scenic View, Mcmillan	Beacon Hill & Scenic View	~~~~	7:55	~~~~	9:55
14	Hausler, Highland Park/Vista	South Kelso Drive @ Hausler Rd.	7:20	8:10	9:20	10:10
	Alma	S. Kelso Dr. @ Alma	7:22	8:12	9:22	10:12
	Alma, Grim, Banyon	S. Kelso Dr. @ Russell	7:24	8:14	9:24	10:14
15	Mt. Brynion-All stops <u>ABOVE Hageman</u> :					
	Mt. Brynion above Hageman	Mt. Brynion & Hageman	7:15	8:15	9:15	10:15
	Johnson Ln	Mt. Brynion & Johnson Ln	7:18	8:18	9:18	10:18
	Williams-Finney	Mt. Brynion & Williams-Finney	7:20	8:20	9:20	10:20
	Minor Road & Theresa Way	Mt. Brynion & Minor Rd.	7:22	8:22	9:22	10:22
16	Carroll Rd	S. Kelso Dr. @ Carroll Rd.	7:20	8:05	9:20	10:05
17	P.G. Sweet Rd	Allen St. @ P.G. Sweet Rd	7:10	8:05	9:10	10:05
	Harris St	Allen St. @ Harris St	7:15	8:10	9:15	10:10
	Allen St. & Corduroy	Allen St. @ Corduroy	7:20	8:15	9:20	10:20
	Beschel Hts. & Sunrise	Butler Acres Elementary School	7:25	~~~~	9:25	~~~~

Kelso Schools Transportation Department

2023-2024 -- PM SNOW ROUTES

*Only stops affected by snow routes are listed below, stop areas not listed will be serviced as usual
AM buses arrive at pickup location approximately 10 minutes before scheduled leave time

ROUTE	AREA	BUS DROPS OFF HERE	BUS DROP OFF TIME		WED EARLY RELEASE DROP OFF TIME	
			HS/MS	ELEMENTARY	HS/MS	ELEMENTARY
1	Ostrander Rd, Rollingwood, Ballpark	Ostrander & N. Pacific @ park-n-ride	3:00	4:00	1:30	2:15
3	Holcomb Acres Rd	Holcomb Loop Rd	3:05	3:45	1:35	2:10
4	Headquarters Rd	N. Pacific & Headquarters	3:15	4:10	1:50	2:35
6	River View, Mtn. View	South & Beulah	~~~~	3:50	~~~~	2:30
8	Hazel Dell Rd	Hazel Dell Rd @ Leckler Creek Rd	~~~~		~~~~	
9	Hazel Dell Rd	Hazel Dell Rd @ Leckler Creek Rd	3:10	3:55	1:40	2:25
10	Scenic View, Mcmillan	Beacon Hill & Scenic View	~~~~	3:45	~~~~	2:15
14	Hausler, Highland Park/Vista	South Kelso Drive @ Hausler Rd.	2:50	3:45	1:20	2:15
	Alma, Grim, Banyon	S. Kelso Dr. @ Alma	2:55	3:50	1:25	2:20
	Alma	S. Kelso Dr. @ Russell	3:00	3:55	1:30	2:25
15	Mt. Brynion-All stops <u>ABOVE Hageman</u> :					
	Mt. Brynion above Hageman	Mt. Brynion & Hageman	2:55	3:40	1:25	2:05
	Johnson Ln	Mt. Brynion & Johnson Ln	2:57	3:42	1:27	2:07
	Williams-Finney	Mt. Brynion & Williams-Finney	2:59	3:44	1:29	2:09
	Minor Road & Theresa Way	Mt. Brynion & Minor Rd.	3:01	3:46	1:31	2:11
16	Carroll Rd	S. Kelso Dr. @ Carroll Rd.	2:50	3:50	1:20	2:25
17	P.G. Sweet Rd	Allen St. @ P.G. Sweet Rd	3:00	3:45	1:30	2:15
	Harris St	Allen St. @ Harris St	3:02	3:47	1:32	2:17
	Allen St. & Corduroy	Allen St. @ Corduroy	3:04	3:49	1:34	2:19
	Beschel Hts. & Sunrise	Butler Acres Elementary School	3:08	~~~~	1:38	~~~~

BLUE JAY REMINDERS



Spirit Days

College Wear Wednesdays

Every WEDNESDAY, wear blue and gold, college or career wear to remind ourselves of our limitless futures.



Blue Jay Fridays



Every FRIDAY, wear Butler Acres, Coweeman or Kelso High School gear or blue or yellow shirts.
GO KELSO!!!

Lunch Times

TK - 10:55am

Kinder - 11:20am

1st - 11:30am

2nd - 11:40am

3rd - 12:00pm

4th - 12:05pm

5th - 12:10pm

School Break

**Spring Break
April 1-5**

Butler Acres Before School Policy

For the safety of our students, please refrain from arriving before
8:30 AM as there will be no supervision.

Nurse's Corner

Mrs. Tasha says "Remember to wash your hands and cover your cough, especially during flu and cold season!"



No Explorer's Club

January 8-10



STRONG SCHOOLS STRONGER COMMUNITY

Top 10 Renewal Levy FAQs

In November 2023, Kelso School District asked our community through a ThoughtExchange what questions they had about the **RENEWAL educational program and operations levy** that will be on the **February 13, 2024**, ballot. There were 10 frequently asked questions. [Click here for the answers \(bit.ly/levyFAQ\)](https://bit.ly/levyFAQ).

1 What will the levy pay for?

2 What won't the levy pay for?

3 What is the monthly increase in the levy for me and my family in terms of benefits for kids and staff?

4 If this is a renewal/replacement levy, why does the amount increase?

5 What is the levy amount, estimated levy rate, and collection years for the 2024 levy?

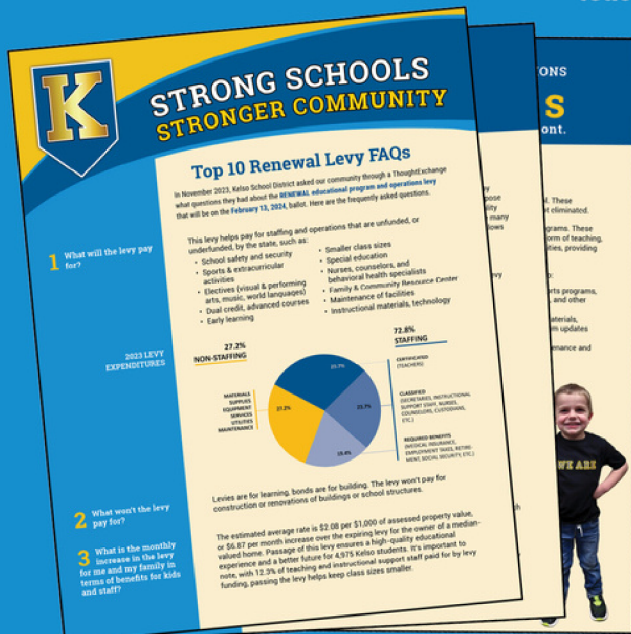
6 What are the highest priorities for the district and schools if the levy passes?

7 If the levy doesn't pass, what will happen to the following staffing funded by levy dollars: school safety and security, sports and activities, Family & Community Resource Center, counseling and nursing supports, teachers and instructional staff?

8 How does levy funding affect class sizes?

9 What steps are taken to ensure fiscal responsibility?

10 When will the next bond be proposed?



YOU make a difference!

Register to vote at: voter.votewa.gov

Learn more at WeAreKelso.org

Look for your ballot in the mail in late January, and please vote!



KELSO SCHOOL DISTRICT NO. 458

2023-2024

Student School Calendar

AUGUST 2023						
Su	M	T	W	Th	F	Sa
		1	2	3	4	5
6	7	8	9	10	11	12
13	14	15	16	17	18	19
20	21	22	23	24	25	26
27	28	29	30	31		
SEPTEMBER 2023						
Su	M	T	W	Th	F	Sa
					1	2
3	4	5	6	7	8	9
10	11	12	13	14	15	16
17	18	19	20	21	22	23
24	25	26	27	28	29	30
OCTOBER 2023						
Su	M	T	W	Th	F	Sa
1	2	3	4	5	6	7
8	9	10	11	12	13	14
15	16	17	18	19	20	21
22	23	24	25	26	27	28
29	30	31				
NOVEMBER 2023						
Su	M	T	W	Th	F	Sa
			1	2	3	4
5	6	7	8	9	10	11
12	13	14	15	16	17	18
19	20	21	22	23	24	25
26	27	28	29	30		
DECEMBER 2023						
Su	M	T	W	Th	F	Sa
					1	2
3	4	5	6	7	8	9
10	11	12	13	14	15	16
17	18	19	20	21	22	23
24	25	26	27	28	29	30
31						
JANUARY 2024						
Su	M	T	W	Th	F	Sa
	1	2	3	4	5	6
7	8	9	10	11	12	13
14	15	16	17	18	19	20
21	22	23	24	25	26	27
28	29	30	31			

STUDENT FIRST AND LAST DAYS OF SCHOOL

August 30 First Day

June 12 Last Day

GRADUATION

June 8

STUDENT NON-ATTENDANCE DAYS

September 4 Labor Day

October 6 In-Service Day

November 10 Veterans Day Observed

November 20-22 Elementary School Conferences
(No School for Elementary Students ONLY)

November 23-24 Thanksgiving Break

November 27 Trimester Break

Dec. 21 – Jan. 2 Winter Break

January 15 MLK Day

January 26 Semester Break

February 19 Presidents' Day

March 8 In-Service Day

March 11 Trimester Break

April 1 – 5 Spring Break

May 27 Memorial Day

EARLY DISMISAL DAYS

Elementary 1:55 pm, Secondary 1:00 pm

November 22 Secondary Students Only

December 20

March 29

Last Day of School

Elementary 11:10 am, Secondary 10:05 am

TERM END DAYS

Trimesters (Elementary and High School)

November 22 Trimester 1

March 7 Trimester 2

June 12 Trimester 3

Semesters (Middle School)

January 25 Semester 1

June 12 Semester 2

SCHOOL HOURS

Elementary Schools

Mon, Tues, Thurs, Fri 8:45 am – 3:25 pm

Wednesdays 8:45 am – 1:55 pm

Secondary Schools

Mon, Tues, Thurs, Fri 7:50 am – 2:30 pm

Wednesdays 7:50 am – 1:00 pm

MAKE-UP DAYS

November 27

January 26

March 11

End of School Year

FEBRUARY 2024						
Su	M	T	W	Th	F	Sa
				1	2	3
4	5	6	7	8	9	10
11	12	13	14	15	16	17
18	19	20	21	22	23	24
25	26	27	28	29		
MARCH 2024						
Su	M	T	W	Th	F	Sa
					1	2
3	4	5	6	7	8	9
10	11	12	13	14	15	16
17	18	19	20	21	22	23
24	25	26	27	28	29	30
31						
APRIL 2024						
Su	M	T	W	Th	F	Sa
	1	2	3	4	5	6
7	8	9	10	11	12	13
14	15	16	17	18	19	20
21	22	23	24	25	26	27
28	29	30				
MAY 2024						
Su	M	T	W	Th	F	Sa
			1	2	3	4
5	6	7	8	9	10	11
12	13	14	15	16	17	18
19	20	21	22	23	24	25
26	27	28	29	30	31	
JUNE 2024						
Su	M	T	W	Th	F	Sa
						1
2	3	4	5	6	7	8
9	10	11	12	13	14	15
16	17	18	19	20	21	22
23	24	25	26	27	28	29
30						
JULY 2024						
Su	M	T	W	Th	F	Sa
	1	2	3	4	5	6
7	8	9	10	11	12	13
14	15	16	17	18	19	20
21	22	23	24	25	26	27
28	29	30	31			



Lunch Menu



January 2024

Butler Acres Elementary
Elementary Lunch 23-24

01 Winter Break	02 Winter Break	03 Lunch Entree Chicken Burger Sandwich <i>With</i> Roasted Green Beans Vegetables Fruit and Vegetable Variety Milk Milk Choice Misc. Condiments	04 Lunch Entree Taco Salad (Elementary) <i>And</i> Tostitos Bag Vegetables Fruit and Vegetable Variety Milk Milk Choice Misc. Salsa Sour Cream Packet Condiments	05 Lunch Entree Homemade Cheese Pizza <i>And</i> Green Salad Vegetables Fruit and Vegetable Variety Milk Milk Choice Misc. Condiments
08 Lunch Entree Goldkist Chicken Tenders <i>With</i> Roasted Baby Potatoes Vegetables Fruit and Vegetable Variety Milk Milk Choice Misc. Condiments	09 Pancakes <i>And</i> Breakfast Sausage Patty <i>With</i> Syrup Vegetables Fruit and Vegetable Variety Milk Milk Choice Misc. Condiments	10 Lunch Entree Pepperoni and Cheese Calzone, TFS Beef Soz <i>With</i> Vegetables Fruit and Vegetable Variety Milk Milk Choice Misc. Condiments	11 Lunch Entree Ham and Cheese Croissant Melt <i>And</i> Tater Tots Vegetables Fruit and Vegetable Variety Milk Milk Choice Misc. Condiments	12 Lunch Entree Pizza Ripper Variety <i>And</i> Caesar Side Salad Vegetables Fruit and Vegetable Variety Milk Milk Choice Misc. Condiments
15 MLK Day	16 Drumstick <i>With</i> Soft Pretzel <i>And</i> Cheese Dipping Sauce Vegetables Fruit and Vegetable Variety Milk Milk Choice Misc. Condiments	17 Lunch Entree Bean & Cheese Burrito <i>With</i> Taco Tots Vegetables Fruit and Vegetable Variety Milk Milk Choice Misc. Condiments	18 Lunch Entree Chicken Alfredo <i>And</i> Garlic Cheese Toast Vegetables Fruit and Vegetable Variety Grains Milk Milk Choice Misc. Condiments	19 Lunch Entree Homemade Cheese Pizza <i>And</i> Green Salad Vegetables Fruit and Vegetable Variety Milk Milk Choice Misc. Condiments
22 Lunch Entree Chicken Nuggets <i>And</i> Seasoned Potato Wedges <i>With</i> Tea Roll Vegetables Fruit and Vegetable Variety Grains Milk Milk Choice Misc. Condiments	23 Cinnamon Glazed French Toast <i>And</i> Scrambled Eggs <i>With</i> Syrup Vegetables Fruit and Vegetable Variety Milk Milk Choice Misc. Condiments	24 Lunch Entree Chicken and Cheese Quesadilla Vegetables Fruit and Vegetable Variety Refried Beans Milk Milk Choice Misc. Condiments	25 Lunch Entree Macaroni & Cheese <i>And</i> Soft Breadstick Vegetables Fruit and Vegetable Variety Milk Milk Choice Misc. Condiments	26 Semester Break
29 Lunch Entree Beef Teriyaki Dippers <i>And</i> Long Grain Brown Rice Vegetables Fruit and Vegetable Variety Milk Milk Choice Misc. Condiments	30 Lunch Entree Chicken Parmesan <i>With</i> Garlic Cheese Toast Vegetables Fruit and Vegetable Variety Milk Milk Choice Misc. Condiments	31 Lunch Entree Nachos with Beef Vegetables Fruit and Vegetable Variety Milk Milk Choice Misc. Condiments		



IMPORTANT INFORMATION



Butler Acres Contacts



Office

Phone: 360-501-1600

Email: brittney.rister@kelsosd.org

Health Room

Phone: 360-501-1602

Email: natasha.harkleroad@kelsosd.org

Attendance

Phone 360-501-1633

Email: lisa.payne@kelsosd.org

Transportation

Phone: 360-501-1350

Email: ksdtransportation@kelsosd.org

Food Services

Phone: 360-501-1807



School Hours



Breakfast: 8:15 - 8:40

(Do not drop off students before 8:15)

School Starts: 8:45

Lunches & Recesses: 11:40 - 1:10

School Ends: 3:25

(Early dismissal every Wednesday at 1:55)

Skyward Family Access

Go to www.kelso.wednet.edu and click on
"Skyward/Family Access Info" under
the Families tab.

- Food Services
- Report Cards
- Contact Information
- Parent/Teacher
Conference Scheduling
- Attendance



KELSO SCHOOL DISTRICT

After School Plans

All students should have a "usual" way home. If there are any changes to this plan (going home with a friend, riding a bus, walking to practice, etc.) please send a note or call the office before 2:00 PM (before 12:00 PM on Wednesdays) and we will send a note informing your student of the change.



Late to School

If your student will be late to school and will be eating a school lunch, please call the office by 9:30 AM to get one ordered.

When your student arrives late to school,
an adult is required to walk them to the
office and sign them in!

Please do not drop students off after school starts without following this important safety procedure!!

School Menus

Our school menus are also available online:

[https://www.myschoolmenus.com/
/organizations/789](https://www.myschoolmenus.com/organizations/789)

Updating Contact Information

If there are any changes to address, phone number, work phone, cell phone, or emergency contacts for your student, please contact the office to update the information. It is extremely important that we have the ability to contact parents/guardians for all students in our care.